



GLENVILLE
STATE COLLEGE

Fact Book

Fall 2018

Glenville State College
Fact Book 2018

Preface

As of March 1st, 2019 Dr. James M. Bradley Jr. has assumed the role of Director of Institutional Research for Glenville State College. This Fact Book has been meticulously assembled and vetted by members from the President's Cabinet, the Registrar's Office, the Director of Institutional Effectiveness, and various other constituents. While this process intends to ensure accuracy, ongoing updates and innovations at GSC may result in changes in data. This Fact Book is intended to provide the most recent data and is published on a yearly basis.

Any questions regarding the data herein should be address to:

Dr. James M. Bradley Jr.
Director of Institutional Research
Glenville State College
303 Heflin Administration Building
Glenville, WV 26351
Phone: (304) 462-6119
e-mail: james.bradley@glenville.edu

Thank you for taking the time to read our Fact Book.

Sincerely,

James M. Bradley Jr.

Officers of Glenville State College

President	Tracy L. Pellett, Ed.D.
Provost & Vice President for Academic Affairs	Victor M. Vega, Ph.D.
Vice President for Business and Finance	John Beckvold, B.A.
Vice President for Enrollment Management	Marty Carver, B.A.
Vice President for College Advancement/Executive Director of GSC Foundation	David Hutchison, B.A.
Associate Vice President for Academic Affairs	Gary Z. Morris, Ph.D.

Glenville State College Board of Governors

Mr. Greg Smith; Board Chair	PO Box 150 Glenville, WV 26351
Mr. Tim Butcher; Vice Chair	PO Box 425 Glenville, WV 26351
Dr. William “Bill” Deel	2208 Circle Dr. Milton, WV 25541
Mr. Stephen “Reno” Gandee	532 Gaston Manor Rd. Jane Lew, WV 26378
Mr. Richard Heffelfinger	2118 Presidential Dr. Charleston, WV 25314
Mr. Ralph Holder	816 Florence St. Belpre, OH 45714
Mrs. Sue Morris	PO Box 397 Glenville, WV 26351
Mr. Michael Rust	937 Woodlawn Height Dr. Louisville, KY 40245
Mr. Larry Baker; Faculty Representative	GSC Campus
Mr. Dustin Crutchfield; Staff Representative	GSC Campus
Mr. Justin Woods; Student Representative	GSC Campus

Table of Contents

Enrollment Trends	Page
Fall	
Fall Enrollment by Class	1
First-Time Freshmen	2
First-Time Freshmen – Baccalaureate Program	3
First-Time Freshmen – Associate Program	4
New Transfers	5
New Transfers – Baccalaureate Program Enrollment	6
New Transfers – Associate Program Enrollment	6
Total Headcount & FTE by Course Location	7
Total Headcount & FTE by Online Courses	7
Fall Enrollment Headcount Comparison	8
Fall Enrollment FTE Comparison	8
Applicants Accepted and Enrolled – All students	9
Applicants Accepted and Enrolled – First-Time Freshmen	10
Applicants Accepted and Enrolled – Transfer Students	11
Applicants Accepted and Enrolled – Re-Admit Students	12
Spring	
Spring Enrollment by Class	13
FTE by Spring Semesters	13
New First-Time Freshmen for Spring	14
New First-Time Freshmen for Spring – Baccalaureate Program	15
New First-Time Freshmen for Spring – Associate Program	15
New Transfers for Spring	16
New Transfers for Spring – Baccalaureate Program	17
New Transfers for Spring – Associate Program	17
Summer	
Summer Enrollment by Class	18
FTE by Summer Semesters	18

Retention Rates

Fall to Fall

Retention of First-Time, Full-Time Students , Fall – Fall	19
Retention of All Students – Degree & Non-Degree Seeking, Fall – Fall	19
Full-Time Students Retention Baccalaureate Program, Fall – Fall	20
Full-Time Students Retention Associate Program, Fall – Fall	20

Fall to Spring

Retention of First-Time, Full-Time Students , Fall – Spring	21
Retention of All Students – Degree & Non-Degree Seeking, Fall – Spring	21
Full-Time Students Retention Baccalaureate Program, Fall – Spring	22
Full-Time Students Retention Associate Program, Fall – Spring	22

Spring to Fall

Retention of First-Time, Full-Time Students – Spring Admits, Spring – Fall	23
Retention of All Students – Degree & Non-Degree Seeking, Spring – Fall	23
Full-Time Students Retention Baccalaureate Program, Spring – Fall	24
Full-Time Students Retention Associate Program, Spring – Fall	24

Graduation

Six Year Graduation Rates (First-Time, Full-Time)	25
Five Year Graduation Rates (First-Time, Full-Time)	25
Four Year Graduation Rates (First-Time, Full-Time)	25
Six Year Graduation Rates (received Athletic Related Financial Aid)	26

Program Profile

Full-Time Enrollment by Degree Program	27
Part-Time Enrollment by Degree Program	28
Enrollment by Academic Program	29
Graduation by Academic Program	33
Degrees Conferred	36

Student Profile

Student Profile Summary	37
Enrollment by Gender	38
Enrollment by State of Residence	39
Enrollment by Ethnicity	40
Average Age of All Students	41
Students Age 25 and Older – All	41
Students Age 25 and Older – All Freshmen	42
Students Age 25 and Older – Full-Time	43
Students Age 25 and Older – Part-Time	43
ACT Scores and SAT Scores – Fall	44
ACT Scores and SAT Scores – Spring Admits	45
Grade Point Averages – Semester	46
Grade Point Averages – Cumulative	46
Enrollment in One or More Developmental Courses - Fall	47
Enrollment in One or More Developmental Courses –Spring Admits	47
West Virginia County Enrollment – Top 25 by number Enrolled	48
West Virginia County Enrollment – by County	49
Residence Hall Occupancy Rates – Spring 2018	51
Residence Hall Occupancy Rates – Fall 2018	52

Faculty Profile

Student/Faculty Ratios	53
Full-Time Faculty by Academic Rank	54
Full-Time Faculty by Tenure Status	54
Full-Time Faculty by Highest Degree Held	55
Part-Time Faculty by Highest Degree Held	56
Full-Time Faculty by Gender	57
Full-Time Faculty by Ethnicity	58
Full Time Instructional Faculty – Average Nine-Month Salary	58

Financial

Semester Tuition and Fees	59
Annual Tuition Comparisons	59
Revenue Summarized	60
Educational and General (E&G) Expenditures Summarized	61
Financial Aid Summary, First-Time Freshman	62
Financial Aid Processed	62
Organizational Charts	
Board of Governors, President, and Executive Staff	63
Committees	
Academic Appeals, Academic Policy, Assessment, Athletic, College Leadership, Curriculum, Enrollment Management, Faculty Development	64
Faculty Senate, Financial Aid Appeals, HLC Assurance, Honors Program, Internationalization, Library Advisory, Promotion & Tenure, Retention	65
Scholarship & Financial Aid, Student Life, Textbook Affordability	66

Fall Enrollment by Class							
Class	2012	2013	2014	2015	2016	2017	2018*
Freshman	680	573	566	489	517	510	517
Sophomore	225	220	247	252	233	239	235
Junior	199	185	183	156	186	183	190
Senior	334	287	256	260	232	248	231
Unclassified ¹	460	585	550	575	473	492	257
Total Headcount	1898	1850	1802	1732	1641	1672	1430

Percentage of Fall Enrollment by Class							
Class	2012	2013	2014	2015	2016	2017	2018*
Freshman	36%	31%	31%	28%	32%	31%	36%
Sophomore	12%	12%	14%	15%	14%	14%	16%
Junior	10%	10%	10%	9%	11%	11%	13%
Senior	18%	16%	14%	15%	14%	15%	16%
Unclassified ¹	24%	31%	31%	28%	29%	29%	18%
Total Headcount	1898	1850	1802	1732	1641	1672	1430

¹ Students not seeking a degree, high school early entrance students, & Transient Students

* 2018 does not include DMAPS

First-Time Freshmen							
Term	Enrolled Full-Time	Male	Female	Enrolled Part-Time	Male	Female	Total Enrolled
Fall 2012	339	224	115	61	55	6	400
Fall 2013	280	163	117	35	19	16	315
Fall 2014	264	148	116	80	66	14	344
Fall 2015	287	161	126	54	59	5	341
Fall 2016	320	165	155	77	75	2	397
Fall 2017	297	182	115	72	70	2	369
Fall 2018	291	157	134	33	32	1	324

First-Time Freshmen - Baccalaureate Program							
Term	Enrolled Full-Time	Male	Female	Enrolled Part-Time	Male	Female	Total Enrolled
Fall 2012	169	112	57	1	0	1	170
Fall 2013	175	96	79	1	1	0	176
Fall 2014	195	107	88	5	1	4	200
Fall 2015	206	112	94	3	1	2	209
Fall 2016	252	120	132	36	36	0	288
Fall 2017	239	139	100	3	3	0	242
Fall 2018	211	106	105	1	1	0	221

First-Time Freshmen - Associate Program							
Term	Enrolled Full-Time	Male	Female	Enrolled Part-Time	Male	Female	Total Enrolled
Fall 2012	170	112	58	60	55	5	230
Fall 2013	105	67	38	34	18	16	139
Fall 2014	69	41	28	75	65	10	144
Fall 2015	81	49	32	47	45	2	128
Fall 2016	68	45	23	41	39	2	109
Fall 2017	58	43	15	69	67	2	127
Fall 2018	80	51	29	31	30	1	111

New Transfers for Fall							
Term	Enrolled Full-Time	Male	Female	Enrolled Part-Time	Male	Female	Total Enrolled
Fall 2012	92	54	38	28	24	4	120
Fall 2013	58	36	22	97	55	42	155
Fall 2014	80	49	31	63	41	22	143
Fall 2015	70	45	25	32	29	3	102
Fall 2016	68	36	32	62	57	5	130
Fall 2017	70	40	30	30	29	1	100
Fall 2018	69	42	27	11	9	2	80

New Transfers - Baccalaureate Program

Term	Enrolled Full-Time	Male	Female	Enrolled Part-Time	Male	Female	Total Enrolled
Fall 2012	64	37	27	3	1	2	67
Fall 2013	51	34	17	5	3	2	56
Fall 2014	66	42	24	7	5	2	73
Fall 2015	61	37	24	3	1	2	64
Fall 2016	61	32	29	37	34	3	98
Fall 2017	61	31	30	9	8	1	70
Fall 2018	61	35	26	5	3	2	66

New Transfers - Associate Program

Term	Enrolled Full-Time	Male	Female	Enrolled Part-Time	Male	Female	Total Enrolled
Fall 2012	28	17	11	25	23	2	53
Fall 2013	7	2	5	92	52	40	99
Fall 2014	14	7	7	56	36	20	70
Fall 2015	8	7	1	28	27	1	36
Fall 2016	7	4	3	24	23	1	31
Fall 2017	9	9	0	21	21	0	30
Fall 2018	8	7	1	6	6	0	14

Enrollment by Course Location

Location	Fall 2014		Fall 2015		Fall 2016		Fall 2017		Fall 2018 ³	
	Headcount	FTE	Headcount	FTE	Headcount	FTE	Headcount	FTE	Headcount	FTE
Glenville Campus	1037	974	1217	1008	1182	1016	1030	915	1013	988
FCI Gilmer ¹	139	69	120	48	81	31	57	26	60	26
Huttonsville ¹	-	-	-	-	75	32	125	70	103	68
Braxton Center	84	24	72	17	35	9	0	0	0	0
High Schools	251	71	307	71	238	57	322	90	254	77

Enrollment by Online Courses³

Location	Fall 2014		Fall 2015		Fall 2016		Fall 2017		Fall 2018 ³	
	Headcount	FTE	Headcount	FTE	Headcount	FTE	Headcount	FTE	Headcount	FTE
Glenville Campus	280	78	329	77	351	106	474	138	516	160
DMAPS ²	189	75	52	25	6	1	21	11	-	-
Total	469	153	381	102	357	107	495	149	516	160

¹Amended 2015-2016 counts to separate FCI and Huttonsville. Numbers are lower than previously reported since original numbers were from census date.

²West Virginia Department of Military Affairs and Public Safety

³2018 does not include DMAPS

Fall Enrollment Headcount Comparison

Institution Name	Fall 2012	Fall 2013	Fall 2014	Fall 2015	Fall 2016	Fall 2017	Fall 2018*
Bluefield State College	1935	1747	1563	1482	1362	1379	1266
Concord University	2834	2767	2545	2498	2451	2194	2037
Fairmont State University	4451	4232	4034	4025	4049	3881	3942
Glenville State College	1898	1850	1802	1732	1641	1672	1431
Shepherd University	4326	4221	4041	3904	3885	3797	3736
West Liberty University	2804	2775	2693	2347	2310	2443	2522
West Virginia State University	2644	2677	2884	3221	3481	4093	4033

Fall Enrollment FTE Comparison

Institution Name	Fall 2014	Fall 2015	Fall 2016	Fall 2017	Fall 2018
Bluefield State College	1352	1302	1202	1189	1096.07
Concord University	2305	2260	2176	1988	1660.73
Fairmont State University	3565	3556	3626	3464	3348.87
Glenville State College	1279	1251	1263	1262	1159.33
Shepherd University	3458	3290	3094	3002	2815.27
West Liberty University	2513	2232	2190	2287	2134.07
West Virginia State University	2229	2301	2363	2460	2342.47

*2018 does not include DMAPS

Applicants Accepted and Enrolled
All Students (No Dual Enrollment HS Students)

Term	Applicants	Male	Female	Number Accepted	Enrolled Full-Time	Male	Female	Enrolled Part-Time	Male	Female	Total Enrolled
Fall 2012	1568	888	680	1354	472	297	175	116	94	22	588
Fall 2013	1443	725	718	1140	330	197	133	131	73	58	461
Fall 2014 ¹	1640	833	807	717	366	210	156	166	114	52	532
Fall 2015	1670	853	817	1201	375	215	160	98	80	18	473
Fall 2016	1554	853	701	1145	404	211	193	142	134	8	546
Fall 2017	2045	1022	1023	1277	384	231	153	129	124	5	513
Fall 2018*	2297	1116	1149	2187	391	212	179	193	154	39	584

Applicants Accepted and Enrolled
Conversion Percentages

Term	Accepted to Applicants	Full-Time to Accepted	Part-Time to Accepted	Enrollment to Accepted
Fall 2012	86%	35%	8%	43%
Fall 2013	79%	29%	11%	40%
Fall 2014 ¹	44%	51%	23%	74%
Fall 2015	72%	31%	8%	39%
Fall 2016	74%	35%	12%	48%
Fall 2017	62%	30%	10%	40%
Fall 2018*	95%	18%	9%	27%

¹ Applicants with incomplete applications not accepted.

* Open Enrollment – Accepted number excludes only applications with no decision, rejected application, and applications that were withdrawn by student

Applicants Accepted and Enrolled
First-Time Freshmen (No Dual Enrollment HS Students)

Term	Applicants	Male	Female	Number Accepted	Enrolled Full-Time	Male	Female	Enrolled Part-Time	Male	Female	Total Enrolled
Fall 2012	1218	696	522	1024	339	224	115	61	55	6	400
Fall 2013	1198	586	612	892	280	163	117	35	19	16	315
Fall 2014 ¹	1292	644	648	602	264	148	116	80	66	14	344
Fall 2015	1430	712	718	1036	287	161	126	54	49	5	341
Fall 2016	1316	685	631	914	320	165	155	77	75	2	397
Fall 2017	1774	858	916	1110	297	182	115	72	70	2	369
Fall 2018*	1844	835	979	1755	290	157	133	29	28	1	319

Applicants Accepted and Enrolled
Conversion Percentages First-Time Freshmen

Term	Accepted to Applicants	Full-Time to Accepted	Part-Time to Accepted	Enrollment to Accepted
Fall 2012	84%	33%	6%	39%
Fall 2013	74%	31%	4%	35%
Fall 2014 ¹	47%	44%	13%	57%
Fall 2015	72%	28%	5%	33%
Fall 2016	69%	35%	8%	43%
Fall 2017	63%	27%	6%	33%
Fall 2018*	95%	17%	2%	18%

¹ Applicants with incomplete applications not accepted.

* Open Enrollment – Accepted number excludes only applications with no decision, rejected application, and applications that were withdrawn by student

Applicants Accepted and Enrolled
New Transfer Students (No Dual Enrollment HS Students)

Term	Applicants	Male	Female	Number Accepted	Enrolled Full-Time	Male	Female	Enrolled Part-Time	Male	Female	Total Enrolled
Fall 2012	247	140	107	227	92	54	38	28	24	4	120
Fall 2013	240	135	105	224	58	36	22	97	55	42	155
Fall 2014 ¹	264	151	113	147	80	49	31	63	41	22	143
Fall 2015	208	130	78	133	70	45	25	32	29	3	102
Fall 2016	219	156	63	215	68	36	32	62	57	5	130
Fall 2017	220	133	87	119	70	40	30	30	29	1	100
Fall 2018*	232	131	99	212	69	42	27	11	9	2	80

Applicants Accepted and Enrolled
Conversion Percentages New Transfer Students

Term	Accepted to Applicants	Full-Time to Accepted	Part-Time to Accepted	Enrollment to Accepted
Fall 2012	92%	41%	12%	53%
Fall 2013	93%	26%	43%	69%
Fall 2014 ¹	56%	54%	43%	97%
Fall 2015	64%	52%	24%	77%
Fall 2016	98%	32%	29%	60%
Fall 2017	54%	59%	25%	84%
Fall 2018*	91%	33%	5%	38%

¹ Applicants with incomplete applications not accepted.

* Open Enrollment – Accepted number excludes only applications with no decision, rejected application, and applications that were withdrawn by student

Applicants Accepted and Enrolled
Re-Admit Students (No Dual Enrollment HS Students)

Term	Applicants	Male	Female	Number Accepted	Enrolled Full-Time	Male	Female	Enrolled Part-Time	Male	Female	Total Enrolled
Fall 2012	103	52	51	103	41	19	22	27	15	12	68
Fall 2013	79	39	40	75	19	8	11	32	19	13	51
Fall 2014 ¹	74	33	41	48	22	13	9	23	7	16	45
Fall 2015	32	11	21	32	18	9	9	14	2	12	32
Fall 2016	19	12	7	19	16	10	6	3	2	1	19
Fall 2017	51	31	20	48	17	9	8	27	25	2	44
Fall 2018*	57	30	27	57	22	9	13	6	5	1	28

¹ Applicants with incomplete applications not accepted.

* Open Enrollment – Accepted number excludes only applications with no decision, rejected application, and applications that were withdrawn by student

Spring Enrollment by Class							
Class	2012	2013	2014	2015	2016	2017	2018*
Freshman	544	518	468	349	398	326	374
Sophomore	273	253	257	306	224	274	251
Junior	222	200	189	195	189	201	173
Senior	364	344	314	284	260	354	237
Unclassified ¹	155	245	186	251	423	296	236
Total Headcount	1558	1560	1414	1388	1494	1451	1271

FTE by Spring Semesters							
Term	2012	2013	2014	2015	2016	2017	2018
Spring	1271	1245	1121	1127	1103	1101	1034

¹ Includes: Students not seeking a degree, high school early entrance students, & new transfers (per HEPC guidelines).

* 2018 does not include DMAPS

New First-Time Freshmen for Spring							
Term	Enrolled Full-Time	Male	Female	Enrolled Part-Time	Male	Female	Total Enrolled
Spring 2013	30	16	14	5	1	4	35
Spring 2014	24	19	5	41	39	2	65
Spring 2015	25	20	5	5	3	2	30
Spring 2016	22	16	6	8	8	0	30
Spring 2017	16	12	4	13	12	1	29
Spring 2018	16	13	3	13	13	0	29

New First-Time Freshmen for Spring - Baccalaureate Program

Term	Enrolled Full-Time	Male	Female	Enrolled Part-Time	Male	Female	Total Enrolled
Spring 2013	14	7	7	1	0	1	15
Spring 2014	15	11	4	1	1	0	16
Spring 2015	13	10	3	0	0	0	13
Spring 2016	10	6	4	0	0	0	10
Spring 2017	15	11	4	3	3	0	18
Spring 2018	9	7	2	2	2	0	11

New First-Time Freshmen for Spring – Associate Program

Term	Enrolled Full-Time	Male	Female	Enrolled Part-Time	Male	Female	Total Enrolled
Spring 2013	16	9	7	4	1	3	20
Spring 2014	9	8	1	40	38	2	49
Spring 2015	12	10	2	4	3	1	16
Spring 2016	12	10	2	8	8	0	20
Spring 2017	1	1	0	10	9	1	11
Spring 2018	7	6	1	11	11	0	18

New Transfers for Spring							
Term	Enrolled Full-Time	Male	Female	Enrolled Part-Time	Male	Female	Total Enrolled
Spring 2013	46	17	29	8	3	5	54
Spring 2014	35	16	19	21	15	6	56
Spring 2015	25	16	9	10	5	5	35
Spring 2016	29	17	12	8	5	3	37
Spring 2017	15	7	8	11	9	2	27
Spring 2018	19	7	12	1	1	0	20

New Transfers for Spring - Baccalaureate Program

Term	Enrolled Full-Time	Male	Female	Enrolled Part-Time	Male	Female	Total Enrolled
Spring 2013	35	15	20	3	0	3	38
Spring 2014	27	13	14	2	0	2	29
Spring 2015	19	13	6	1	0	1	20
Spring 2016	25	13	12	5	3	2	30
Spring 2017	14	6	8	6	4	2	20
Spring 2018	18	7	11	0	0	0	18

New Transfers for Spring - Associate Program

Term	Enrolled Full-Time	Male	Female	Enrolled Part-Time	Male	Female	Total Enrolled
Spring 2013	11	2	9	5	3	2	16
Spring 2014	8	3	5	19	15	4	27
Spring 2015	6	3	3	9	5	4	15
Spring 2016	4	4	0	3	2	1	7
Spring 2017	1	1	0	5	5	0	7
Spring 2018	1	0	1	1	1	0	2

Summer Enrollment by Class

Class	2012	2013	2014	2015	2016	2017	2018*
Freshman	162	34	59	49	56	75	82
Sophomore	107	61	61	94	60	78	74
Junior	65	55	46	53	49	49	52
Senior	142	94	82	81	85	107	77
Unclassified ¹	80	32	109	74	103	70	7
Headcount Total	556	276	357	351	353	379	292

FTE by Summer Semesters

Term	2012	2013	2014	2015	2016	2017	2018
Summer	182	80	85	97	87	115	95

¹ Students not seeking a degree, high school early entrance students, & new transfers (per HEPC guidelines).

* 2018 does not include DMAPS

Retention of First-Time, Full-Time Students
Fall to Fall

	2012 to 2013	2013 to 2014	2014 to 2015	2015 to 2016	2016 to 2017	2017 to 2018**
Bachelor's	63%	65%	62%	70%	65%	238-140 (59%)
Associate's	47%	48%	42%	43%	41%	57-22 (39%)
Total	55%	59%	56%	62%	60%	295-162 (55%)

Retention of All Students
Fall to Fall

	2012 to 2013	2013 to 2014	2014 to 2015	2015 to 2016	2016 to 2017	2017 to 2018
Degree Seeking*	49%	51%	52%	49%	51%	1132-715 (63%)
Degree and Non-Degree Seeking**	46%	44%	45%	45%	49%	1391-765 (55%)

*Does not include High School, "other", DMAPS, or students who graduated within the year

** does not include DMAPS or students who graduated between collection points.

Full-Time Students - Baccalaureate Retention

Fall to Fall

	2012 - 2013	2013 - 2014	2014 - 2015	2015 - 2016	2016 - 2017	2017 - 2018*
First-Time Freshmen	63%	65%	62%	70%	65%	238-140 (59%)
All Freshmen	62%	62%	65%	68%	63%	374-228 (61%)
Sophomore	76%	81%	86%	83%	83%	176-146 (83%)
Junior	81%	74%	82%	80%	81%	153-121 (79%)

Full-Time Students - Associate Retention

Fall to Fall

	2012 - 2013	2013 - 2014	2014 - 2015	2015 - 2016	2016 - 2017	2017 - 2018*
First-Time Freshmen	47%	48%	42%	43%	41%	57-22 (39%)
All Freshmen	50%	50%	50%	48%	40%	84-35 (42%)
Sophomore	61%	63%	57%	48%	43%	7-4 (57%)

*all 2018 numbers do not include DMAPS and do not count students who graduated between reporting dates in ratios.

Retention of First-Time, Full-Time Students
Fall to Spring

	2012 to 2013	2013 to 2014	2014 to 2015	2015 to 2016	2016 to 2017	2017 to 2018**
Bachelor's	86%	84%	85%	89%	85%	238-193 (81%)
Associate's	75%	74%	74%	78%	63%	57-36 (63%)
Total	80%	79%	82%	86%	80%	295-229 (78%)

Retention of All Students
Fall to Spring

	2012 to 2013	2013 to 2014	2014 to 2015	2015 to 2016	2016 to 2017	2017 to 2018
Degree Seeking*	79%	72%	68%	70%	71%	1232-1000 (81%)
Degree and Non-Degree Seeking**	68%	59%	63%	63%	66%	1491-1102 (74%)

*Does not include High School, "other", DMAPS, or students who graduated within the year

** does not include DMAPS or students who graduated between collection points.

Full-Time Students - Baccalaureate Retention
Fall to Spring

	2012 - 2013	2013 - 2014	2014 - 2015	2015 - 2016	2016 - 2017	2017 – 2018*
First-Time Freshmen	86%	84%	85%	89%	85%	238-193 (81%)
All Freshmen	84%	82%	84%	85%	82%	374-307 (82%)
Sophomore	88%	90%	95%	91%	91%	176-161 (92%)
Junior	92%	90%	96%	94%	96%	167-152 (91%)

Full-Time Students - Associate Retention
Fall to Spring

	2012 - 2013	2013 - 2014	2014 - 2015	2015 - 2016	2016 - 2017	2017 – 2018*
First-Time Freshmen	75%	76%	74%	78%	41%	57-36 (63%)
All Freshmen	75%	70%	73%	78%	40%	87-56 (64%)
Sophomore	82%	83%	89%	68%	43%	7-6 (86%)

* does not include DMAPS or students who graduated between collection points.

Retention of First-Time, Full-Time Students – Spring Admits
Spring to Fall

	2012 - 2012	2013 - 2013	2014 - 2014	2015 – 2015	2016 – 2016	2017 – 2017	2018 – 2018
Bachelor's	67%	36%	60%	66%	40%	53%	9-9 (100%)
Associate's	56%	69%	33%	66%	50%	0%	7-3 (43%)
Total	59%	53%	50%	66%	45%	50%	16-12 (75%)

Retention of All Students
Spring to Fall

	2012 - 2012	2013 -2013	2014 - 2014	2015 – 2015	2016 – 2016	2017 – 2017	2018 – 2018
Degree Seeking	64%	61%	65%	66%	63%	58%	989-735 (74%)
Degree and Non-Degree Seeking	60%	58%	59%	56%	56%	55%	1172-754 (64%)

Full-Time Students - Baccalaureate Retention

Spring to Fall

	2012 - 2012	2013 - 2013	2014 - 2014	2015 - 2015	2016 - 2016	2017 - 2017	2018 - 2018
All Freshmen	69%	66%	71%	71%	71%	57%	237-174 (73%)
Sophomore	90%	84%	84%	87%	87%	85%	207-168 (81%)
Junior	79%	89%	85%	88%	91%	90%	151-140 (93%)

Full-Time Students - Associate Retention

Spring to Fall

	2012 - 2012	2013 - 2013	2014 - 2014	2015 - 2015	2016 - 2016	2017 - 2017	2018 - 2018
All Freshmen	52%	62%	56%	61%	55%	31%	64-43 (67%)
Sophomore	76%	78%	79%	59%	73%	50%	15-12 (80%)

Six-Year Graduation Rates*							
Started and Completed at Same Institution							
First-Time, Full-Time Students (Entering Year)							
	2006	2007	2008	2009	2010	2011	2012
Glenville State College Baccalaureate	31%	29%	28%	29%	44%	43%	171-61 36%
All WV State Colleges Baccalaureate Avg.	45%	44%	44%	45%	46%	49%	51%

Five-Year Graduation Rates*							
Started and Completed at Same Institution							
First-Time, Full-Time Students (Entering Year)							
	2007	2008	2009	2010	2011	2012	2013
Glenville State College	25%	23%	26%	39%	38%	32%	175-74 42%

Four-Year Graduation Rates*							
Started and Completed at Same Institution							
First-Time, Full-Time Students (Entering Year)							
	2008	2009	2010	2011	2012	2013	2014
Glenville State College	11%	16%	22%	24%	21%	25%	194-49 25%

*Graduation cohorts are all Bachelor's degree-seeking, 1st time, full-time Freshmen in the given entering year.

Six-Year Graduation Rates

Baccalaureate Students Receiving Athletic-Related Financial Aid (Entering Year)

Entering Year	First-Time Full-Time Freshmen	Certificate or Associates Received	Bachelors Received	Percentage
Fall 2003	37	1	10	29.7%
Fall 2004	47	1	19	42.6%
Fall 2005	65	0	19	29.0%
Fall 2006	68	0	23	33.8%
Fall 2007	35	0	14	41.0%
Fall 2008	69	0	30	43.0%
Fall 2009	58	2	21	40.0%
Fall 2010	53	1	22	43.4%
Fall 2011	79	0	21	27.0%
Fall 2012	81	0	18	22.2%

Full-Time Enrollment by Degree Program		
Term		Total
Fall 2012		1232
	<i>Associate</i>	331
	<i>Baccalaureate</i>	859
	<i>Non-Degree</i>	42
Fall 2013		1114
	<i>Associate</i>	265
	<i>Baccalaureate</i>	828
	<i>Non-Degree</i>	21
Fall 2014		1038
	<i>Associate</i>	201
	<i>Baccalaureate</i>	827
	<i>Non-Degree</i>	10
Fall 2015		1044
	<i>Associate</i>	162
	<i>Baccalaureate</i>	879
	<i>Non-Degree</i>	3
Fall 2016		1059
	<i>Associate</i>	128
	<i>Baccalaureate</i>	926
	<i>Non-Degree</i>	5
Fall 2017		1045
	<i>Associate</i>	106
	<i>Baccalaureate</i>	931
	<i>Non-Degree</i>	8
Fall 2018*		1010
	<i>Associate</i>	141
	<i>Baccalaureate</i>	865
	<i>Non-Degree</i>	4

*Does not include DMAPS

Part-Time Enrollment by Degree Program

Term		Total
Fall 2012		666
	<i>Associate</i>	271
	<i>Baccalaureate</i>	50
	<i>Non-Degree¹</i>	345
Fall 2013		736
	<i>Associate</i>	311
	<i>Baccalaureate</i>	53
	<i>Non-Degree</i>	372
Fall 2014		764
	<i>Associate</i>	289
	<i>Baccalaureate</i>	61
	<i>Non-Degree</i>	414
Fall 2015		688
	<i>Associate</i>	148
	<i>Baccalaureate</i>	54
	<i>Non-Degree</i>	486
Fall 2016		582
	<i>Associate</i>	176
	<i>Baccalaureate</i>	117
	<i>Non-Degree</i>	289
Fall 2017		627
	<i>Associate</i>	194
	<i>Baccalaureate</i>	109
	<i>Non-Degree</i>	324
Fall 2018*		420
	<i>Associate</i>	120
	<i>Baccalaureate</i>	92
	<i>Non-Degree</i>	208

¹ Includes more DMAPS students.

*DMAPS not included in any 2018 numbers

Enrollment by Academic Program

Program	Fall 2011	Fall 2012	Fall 2013	Fall 2014	Fall 2015	Fall 2016	Fall 2017	Fall 2018*
All Bachelor-seeking students duplicated to represent multiple programs beginning Fall 2018								
Art (BA) (Start 2012)	NA	5	13	9	0	2	1	18
Graphics & Digital Media	NA	NA	NA	7	15	19	19	7
Studio Art	NA	NA	NA	1	4	6	7	5
Total	NA	5	13	17	19	27	27	30
Behavioral Sciences								
Criminal Justice (BSBS)	14	10	1	0	0	0	0	-
Psychology/Sociology	94	93	96	91	69	65	66	91
Total	108	103	97	91	69	65	66	91
Biology (BS)	51	41	33	41	37	34	44	49
Business Administration								
Accounting (BSBA)	25	34	33	28	26	21	23	29
Computer Science/Information Systems (BSBA)	23	24	27	25	30	18	30	28
Management (BSBA)	64	42	50	49	47	109	119	119
Marketing (BSBA)	20	14	10	13	13	25	23	10
Integrated Marketing (BSBA) (Start 2018)	-	-	-	-	-	-	-	11
Resort Area Management (BSBA)(start 2005)	4	4	6	8	5	3	1	0
Sport Management (BS) (start 2005)	49	65	71	60	49	46	42	33
Total	185	183	197	183	170	222	238	230
Business Management (BS) (2+2 Program)	5	2	0	0	1	1	0	0
Chemistry (BA)	8	6	6	8	16	9	11	17

Enrollment by Academic Program (continued)

Program	Fall 2011	Fall 2012	Fall 2013	Fall 2014	Fall 2015	Fall 2016	Fall 2017	Fall 2018*
Criminal Justice (BS) (Start 2009)	77	85	95	117	153	156	145	135
Education (Includes duplicated counts for total representation in each major and licensure)								
Biological Science (9-adult) (BAED)	6	6	3	4	4	6	2	6
Business Ed Comprehensive (5-adult) (End 2018)	7	7	4	2	1	2	0	0
Chemistry (9-adult) (BAED)	4	2	1	0	0	1	2	1
Chemistry & Physics (9-adult) (End 2018)	2	3	3	3	2	1	1	0
Early Education (PreK-K) (BAED)	76	19 ¹	1	1	1	10	3	38
Elementary Education (K-6) (BAED)	7	85 ¹	102	93	90	92	87	59
English (5-9) (BAED)	6	1	0	0	0	1	0	3
English (5-adult) (BAED)	22	14	16	17	21	20	23	11
General Science (5-9) (BAED)	3	0	0	0	0	0	0	3
General Science (5-adult) (BAED)	5	3	1	1	1	5	4	3
Health (5-adult) (end 2010)	2	2	NA	NA	NA	NA	NA	NA
Health/Physical Education (PreK-adult)(start 2008)	33	25	22	13	10	17	17	23
Math (5-9) (General Math/Algebra) (BAED)	7	1	1	1	2	2	0	6
Math (5-adult) (BAED)	10	13	12	18	16	15	14	7
Multi-Categorical (K-6) (start 2006)	22	7	0	0	0	1	1	15
Multi-Categorical (Special Ed) (K-adult)(end 2006)	1	0	0	0	0	0	0	0
Music (non-specified) (BAED)(PreK-adult)	34	34	28	32	39	46	40	39
Physical Education (PreK-adult) (End 2008)	13	4	1	0	0	0	0	0
Social Studies (5-adult) (BAED)	30	33	27	27	21	21	27	26
Social Studies (5-9) (BAED)	7	1	1	1	0	0	0	4
Spanish (5-adult) (End 2018)	4	1	2	1	1	0	0	0
Total	301	261	225	214	209	240	221	244
English (BA)	22	16	14	14	9	11	11	13

Enrollment by Academic Program (continued)

Program	Fall 2011	Fall 2012	Fall 2013	Fall 2014	Fall 2015	Fall 2016	Fall 2017	Fall 2018*
Health & Human Performance BS (Start Fall 2014)								
Athletic Conditioning/Coaching	NA	NA	NA	1	15	23	23	35
Exercise Science	NA	NA	NA	7	40	45	57	55
Health Promotions	NA	NA	NA	0	1	6	15	19
Pre-Nursing (1 year intro/collab.Fall 2011)	27	26	18	14	12	19	16	0
Total	NA	NA	NA	8	68	93	111	109
History (BA) (renamed 2009)	6	2	0	0	0	0	0	0
History & Political Science (BA)(new code 2009)	6	12	14	12	18	13	15	12
Interdisciplinary Studies (BA/BS)	1	1	1	1	0	1	0	0
Music (BA) (new 2007)	16	14	18	22	18	17	27	40
Natural Resource Management (BS)	111	114	123	127	124	132	103	89
Regents Bachelor of Arts (BORBA)	18	21	13	12	14	12	9	13
Undeclared	10	18	14	7	8	9	11	19

Enrollment by Academic Program (continued)

	Fall 2011	Fall 2012	Fall 2013	Fall 2014	Fall 2015	Fall 2016	Fall 2017	Fall 2018*
Associate Programs (Duplicated Start 2018 – Students seeking only an Associate Degree)								
Criminal Justice (AS)	146	132	251	203	52	36	33	23
Forest Technology (AS)	12	14	16	12	15	11	9	10
General Business (AA)	247	226	158	181	158	121	131	111
General Studies (AA)	176	210	139	82	71	107	117	107
Land Surveying (AS)	16	19	10	12	13	29	10	7
Total	597	601	574	490	309	304	300	258
Non-Degree Seeking²	308	387	395	424	490	295	332	212
Total Headcount³	1857	1898	1850	1802	1732	1641	1672	1561

*Fall 2018 does not include DMAPS

² Includes certificate-only seekers

³ Beginning Fall 2018, total headcount represents the total number of programs in which students are majoring.

Graduation by Academic Programs

Program	2011-12	2012-13	2013-14	2014-15	2015-16	2016-17	2017-18
Art (BS)	NA	NA	2	3	3	2	0
Graphics & Digital Media (BA)	0	0	0	0	0	0	0
Total	0	0	2	3	3	2	0
Behavioral Science (BS)	0	1	0	0	0	0	0
Psychology/Sociology	18	24	29	17	16	18	12
Criminal Justice	9	3	1	0	0	0	0
Total	27	28	30	17	16	18	12
Biology (BS)	4	5	2	2	7	2	5
Business Administration (BSBA)							
Accounting (BSBA)	4	4	6	5	7	2	2
Computer and Information Systems (BSBA)	0	6	1	5	3	1	4
Management (BSBA)	13	7	12	7	8	11	7
Marketing (BSBA)	1	5	0	0	0	7	3
Resort Area Management	1	0	0	0	1	2	0
Sport Management (BS)	6	9	5	6	5	2	5
Total	27	31	24	23	23	25	21
Business Mgmt (BS) (2+2 Program ended)	2	0	0	0	0	0	1
Chemistry (BA)	1	2	4	1	3	3	5
Criminal Justice (BS) (Start Aug 2009)	0	18	19	16	22	35	31
Education							
Biological Science (9-Adult)	1	1	0	1	0	0	1
Business Ed Comprehensive (5-Adult) (BAED)	0	1	1	1	0	1	0
Chemistry (9-12) (BAED)	0	0	0	0	0	0	0
Early Education (PreK-K) (BAED)	18	6	0	0	0	0	1

Graduation by Academic Programs (continued)

Program	2011-12	2012-13	2013-14	2014-15	2015-16	2016-17	2017-18
Education (continued)							
Elementary Education (BAED)	0	9	24	14	15	12	21
English (5-Adult) (BAED)	2	3	5	1	4	2	3
English (5-9) (BAED)	1	0	0	0	0	0	0
Chemistry & Physics (9-Adult)	0	0	1	0	1	0	1
General Science (5-Adult) (BAED)	1	2	0	0	1	0	0
General Science (5-9) (BAED)	0	0	0	0	0	1	0
Health/Physical Education (PreK-Adult)(BAED)	1	4	4	1	2	0	0
Math (5-Adult) (BAED)	1	1	0	0	6	1	2
Math (5-9) (BAED)	1	1	1	0	1	0	0
Multi-Categorical (K-Adult) (BAED)(End 2006)	0	0	0	0	0	0	0
Multi-Categorical (K-6) (BAED)	2	1	0	0	0	0	0
Music (PreK-Adult) (BAED)	5	5	5	7	7	6	5
Physical Education (PreK-Adult) (BAED)	4	0	0	0	0	0	0
Social Studies (5-Adult) (BAED)	1	3	4	4	1	3	5
Social Studies (5-9) (BAED)	0	2	0	0	0	0	0
Spanish Education (BAED)(Start 2009)	1	0	0	0	0	0	0
Total	39	39	45	29	38	26	39
English (BA)	3	2	8	3	1	0	2
Health & Human Performance BS (Start Fall 2014)							
Athletic Conditioning/Coaching	NA	NA	NA	NA	2	3	2
Exercise Science	NA	NA	NA	NA	3	5	3
Health Promotions	NA	NA	NA	NA	0	1	0
Total	NA	NA	NA	NA	5	9	5
History Political Science	1	1	5	1	7	3	3
Interdisciplinary Studies (BA/BS)	1	2	3	1	0	1	0

Graduation by Academic Programs (continued)

Program	2011-12	2012-13	2013-14	2014-15	2015-16	2016-17	2017-18
Music	5	2	3	4	6	2	3
Natural Resource Management (BS)	19	24	16	22	27	22	27
Regents Bachelor of Arts (BORBA)	22	20	15	14	18	13	20
Total	151	174	176	136	177	164	174
Associate Degrees							
General Business	27	7	12	16	30	3	11
Criminal Justice (AS)	12	10	11	22	18	1	8
Forest Technology (AS)	12	8	11	3	7	11	11
General Studies (AA)	3	1	5	6	5	41	119
Land Surveying (AS)	4	5	8	8	10	5	8
Total	58	31	47	55	70	61	157
Grand Total	209	205	223	191	247	225	331

Degrees Conferred							
Degree Type	2011-12	2012-13	2013-14	2014-15	2015-16	2016-17	2017-18*
Associate Degree	58	31	47	55	70	61	157
Baccalaureate Degree	151	174	176	136	177	164	174
Total	209	205	223	191	247	225	331

*Beginning in 17/18 all students Bachelor's seeking students were automatically awarded an Associate's Degree when completing the appropriate credits

Student Profile Fall 2012 – Fall 2018														
	Fall 2012		Fall 2013		Fall 2014		Fall 2015		Fall 2016		Fall 2017		Fall 2018	
	Number	Percent	Number	Percent	Number	Percent	Number	Percent	Number	Percent	Number	Percent	Number	Percent
Students Total	1898	100%	1850	100%	1802	100%	1732	100%	1641	100%	1672	100%	1430	100%
Gender														
Male	1117	59%	1055	57%	1043	58%	956	55%	952	58%	952	57%	779	54%
Female	781	41%	795	43%	759	42%	776	45%	689	42%	720	43%	651	46%
Residence														
WV Resident	1607	85%	1582	86%	1560	87%	1471	85%	1404	86%	1446	86%	1210	85%
Non-Resident	291	15%	268	14%	242	13%	260	15%	237	14%	226	14%	220	15%
Attendance Status														
Full-Time	1232	65%	1114	60%	1038	58%	1044	60%	1059	65%	1045	62%	1010	71%
Part-Time	666	35%	736	40%	764	42%	688	40%	582	35%	627	38%	420	29%
Ethnicity														
White	1484	78%	1522	82%	1376	76%	1281	74%	1030	63%	1338	80%	1117	78%
African-Amer.	323	17%	250	14%	234	13%	258	15%	198	12%	184	11%	188	13%
Other*	91	5%	72	4%	192	11%	193	11%	413	25%	150	9%	125	9%
Age														
Under 25	1229	64%	1212	66%	1196	66%	1341	78%	1320	80%	1346	81%	1195	84%
25-29	209	11%	164	9%	189	11%	111	6%	112	7%	88	5%	64	4%
30-39	258	14%	230	12%	215	12%	157	9%	121	7%	128	8%	82	6%
40+	202	11%	243	13%	202	11%	123	7%	88	6%	108	6%	89	6%
Unknown														

Enrollment by Gender – All Students*

Term	Total Enrollment	Males	Females	Percentage Male	Percentage Female
Fall 2012	1898	1117	781	59%	41%
Fall 2013	1850	1055	795	57%	43%
Fall 2014	1802	1043	759	58%	42%
Fall 2015	1732	956	776	55%	45%
Fall 2016	1641	952	689	58%	42%
Fall 2017	1672	952	720	57%	43%
Fall 2018*	1430	779	651	54%	46%

Enrollment by Gender – Excluding FCI & DMAPS

Term	Total Enrollment	Males	Females	Percentage Male	Percentage Female
Fall 2012	1455	771	684	53%	47%
Fall 2013	1389	718	671	52%	48%
Fall 2014	1304	668	636	51%	49%
Fall 2015	1376	677	699	49%	51%
Fall 2016	1311	671	640	51%	49%
Fall 2017	1371	681	690	50%	50%
Fall 2018	1267	616	651	49%	51%

*All 18/19 numbers exclude DMAPS

Enrollment By State of Residence
Fall

Home of Residence	2012	2013	2014	2015	2016	2017	2018
Alabama	3	2	4	2	1	1	4
California	12	20	18	19	16	14	9
District of Columbia	41	33	20	22	11	5	12
Florida	15	10	16	21	20	23	22
Georgia	6	3	3	2	9	10	8
Illinois	9	5	4	3	3	1	1
Kentucky	6	5	1	3	1	2	4
Maryland	30	30	36	46	49	40	27
Michigan	3	2	1	6	7	5	5
North Carolina	3	6	2	3	3	2	8
New York	11	10	3	3	5	10	8
Ohio	47	49	23	32	18	18	24
Pennsylvania	6	5	7	10	13	8	13
Texas	2	0	2	2	2	3	5
Virginia	76	65	46	63	50	39	47
West Virginia	1607	1582	1560	1471	1404	1446	1202
All Other States	16	20	54	22	26	39	28
Foreign Countries	5	3	2	1	3	6	3
Total	1898	1850	1802	1731	1641	1672	1430

Enrollment by Ethnicity

Term	White Non-Hispanic	Black Non-Hispanic	Hispanic	Asian or Pacific Islander	American Indian or Alaskan Native	Non-Resident Aliens	Two or more	Minority	Unknown
Fall 2012	1480	323	32	4	13	11	0	20%	35
Fall 2013	1520	247	23	9	7	7	1	16%	36
Fall 2014	1375	232	24	3	0	6	17	16%	145
Fall 2015	1281	258	32	9	0	5	16	18%	131
Fall 2016	1230	231	27	18	0	5	16	17%	114
Fall 2017	1338	184	29	14	0	6	29	16%	72
Fall 2018	1117	187	27	10	8	4	33	19%	44

Percentage of Enrollment by Ethnicity

Term	White Non-Hispanic	Black Non-Hispanic	Hispanic	Asian or Pacific Islander	American Indian or Alaskan Native	Non-Resident Aliens	Two or more	% Minority	Unknown
Fall 2012	78%	17%	2%	.2%	.7%	.6%	2%	20%	1.8%
Fall 2013	82%	13%	1%	.5%	.4%	.4%	2%	16%	1.9%
Fall 2014	76%	13%	1%	.2%	0%	.3%	.9%	16%	8%
Fall 2015	74%	15%	2%	.4%	0%	.2%	.9%	18%	8%
Fall 2016	75%	14%	2%	1%	0%	.3%	1	17%	7%
Fall 2017	80%	11%	2%	1%	0%	.4%	2%	16%	4%
Fall 2018	78%	13%	2%	1%	.7%	.3%	2%	19%	3%

Average Age of All Students

Term	Age
Fall 2012	26
Fall 2013	27
Fall 2014	26
Fall 2015	23
Fall 2016	23
Fall 2017	23
Fall 2018	22

Students Age 25 and Older – All

Term	Undergraduate Enrollment	Undergraduates 25 Years or Older	Percent
Fall 2012	1898	669	35%
Fall 2013	1850	637	34%
Fall 2014	1802	606	34%
Fall 2015	1732	391	23%
Fall 2016	1641	353	22%
Fall 2017	1672	326	19%
Fall 2018	1430	235	16%

Students Age 25 and Older - All Freshmen

Term	Total Freshmen	Freshmen 25 Years or Older	% of Total Freshmen
Fall 2012	680	221	33%
Fall 2013	573	155	27%
Fall 2014	566	144	25%
Fall 2015	489	88	18%
Fall 2016	517	96	19%
Fall 2017	510	122	24%
Fall 2018	408	84	21%

Students Age 25 and Older Full-Time

Term	Full-Time Enrollment	Full-Time Students 25 Years or Older	Percent of Full-Time Students 25 Years or Older
Fall 2012	1232	250	20%
Fall 2013	1114	204	18%
Fall 2014	1038	176	17%
Fall 2015	1044	114	11%
Fall 2016	1059	103	10%
Fall 2017	1045	95	9%
Fall 2018	1010	95	9%

Students Age 25 and Older Part-Time

Term	Part-Time Enrollment	Part-Time Students 25 Years or Older	Percent of Part-Time Students 25 Years or Older
Fall 2012	666	419	63%
Fall 2013	736	433	59%
Fall 2014	764	430	56%
Fall 2015	688	277	40%
Fall 2016	582	250	43%
Fall 2017	627	231	37%
Fall 2018	420	140	33%

ACT Scores and SAT Scores - Fall
First-Time/Full-Time

			State College
Term	ACT Average	SAT Average	System ACT Average
Fall 2012	18.9	830	20.6
Associate	17	757	
Baccalaureate	20.5	914	
Fall 2013	18.6	847	20.6
Associate	16.7	733	
Baccalaureate	19.7	927	
Fall 2014	19.3	872	20.6
Associate	17.3	723	
Baccalaureate	19.9	908	
Fall 2015	19.6	853	20.8
Associate	17.8	745	
Baccalaureate	20.0	884	
Fall 2016	19.1	861	20.7
Associate	16.5	743	
Baccalaureate	19.7	937	
Fall 2017	19.0	861	20.5
Associate	16.3	743	
Baccalaureate	19.7	909	
Fall 2018	19.3	942	20.3
Associate	16.1	854	
Baccalaureate	20.2	967	

ACT Scores and SAT Scores – Spring Admits
First-Time/Full-Time

Term	ACT Average	SAT Average
Spring 2013	18.8	841
Associate	16.0	770
Baccalaureate	20.5	870
Spring 2014	18.7	935
Associate	15	890
Baccalaureate	20	950
Spring 2015	16.4	835
Associate	15.6	875
Baccalaureate	17.3	815
Spring 2016	17.7	920
Associate	16.5	0
Baccalaureate	20	920
Spring 2017	17.8	800
Associate	20	0
Baccalaureate	17.6	800
Spring 2018	17.1	780
Associate	17	780
Baccalaureate	17.1	0

Grade Point Averages Semester¹

	2012-13		2013-14		2014-15		2015-16		2016-17		2017-18	
	Fall	Spring	Fall	Spring	Fall	Spring	Fall	Spring	Fall	Spring	Fall	Spring
All Students	2.42	2.23	2.16	2.21	2.28	2.55	2.38	2.53	2.54	2.49	2.98	3.00
All Freshmen	2.11	1.89	2.05	1.85	2.19	2.37	2.49	2.48	2.28	2.04	2.54	2.51
First-Time Full-Time Freshmen	2.24	2.94	2.61	2.48	2.68	2.06	2.68	2.08	2.47	2.74	2.55	2.71

Grade Point Averages Cumulative²

	2012-13		2013-14		2014-15		2015-16		2016-17		2017-18	
	Fall	Spring	Fall	Spring	Fall	Spring	Fall	Spring	Fall	Spring	Fall	Spring
All Students	2.38	2.46	2.31	2.45	2.40	2.66	2.49	2.64	2.59	2.64	2.99	3.03
All Freshmen	2.27	2.25	2.17	2.14	2.31	2.56	2.58	2.66	2.37	2.41	2.58	2.56
First-Time Full-Time Freshmen	2.43	2.87	2.61	2.48	2.72	2.08	2.70	2.08	2.53	2.73	2.58	2.69

¹ Semester GPA shows work completed for the semester.

² Cumulative GPA includes the total of all dual credit, transfer, and GSC work.

Enrollment in One or More Developmental Courses – Fall First-Time/Full-Time

Term	Freshmen	Developmental Courses	Percent in Developmental Courses
Fall 2012	339	208	61%
Fall 2013	280	190	68%
Fall 2014	264	163	62%
Fall 2015 ¹	287	105	37%
Fall 2016	320	86	27%
Fall 2017 ²	-	-	-
Fall 2018 ²	-	-	-

Enrollment in One or More Developmental Courses – Spring Admits First-Time/Full-Time

Term	Freshmen	Developmental Courses	Percent in Developmental Courses
Spring 2012	22	16	73%
Spring 2013	27	20	74%
Spring 2014	24	15	63%
Spring 2015	25	18	72%
Spring 2016 ¹	22	3	14%
Spring 2017 ²	-	-	-
Spring 2018 ²	-	-	-

¹ Started eliminating pure Developmental courses and moving towards lab enhanced courses.

² No developmental courses offered

West Virginia County Enrollment – Top 25

Fall 2018 with historical figures

County	2012	2013	2014	2015	2016	2017	2018
Incarcerated FCI*	175	103	139	135	183	182	60
Incarcerated HCC**	-	-	-	-	-	-	103
Gilmer	196	168	153	290	213	132	137
Braxton	180	140	155	128	148	149	125
Nicholas	91	112	90	77	73	75	71
Raleigh	50	32	50	57	67	74	67
Calhoun	61	83	46	44	48	46	57
Lewis	72	80	84	75	57	53	50
Webster	24	28	62	75	61	65	50
Roane	52	51	31	26	20	32	38
Kanawha	52	68	48	47	49	41	37
Fayette	27	39	50	24	29	59	34
Jackson	23	21	18	15	20	23	34
Harrison	37	52	36	24	28	28	25
Wood	37	39	23	26	9	15	21
Putnam	13	15	9	9	12	12	18
Clay	72	52	42	43	40	32	17
Pocahontas	18	20	19	20	17	18	17
Upshur	33	25	16	15	16	26	17
Greenbrier	10	14	14	16	14	16	16
Randolph	50	58	50	39	97	155	15
Berkeley	21	31	35	20	22	14	13
Marion	10	12	7	17	13	14	13
Mason	16	14	17	5	9	5	13
Wetzel	5	8	8	9	6	11	13
Boone	7	9	12	23	16	13	11
Grant	2	3	7	21	20	23	11

*Incarcerated FCI includes FCI and Huttonsville until Fall 2018

** Incarcerated HCC separated from FCI as well as Randolph county beginning Fall 2018

*** Stopped servicing Ritchie County High School for Dual enrollment after Spring 2018

West Virginia County Enrollment - All

County	2012	2013	2014	2015	2016	2017	2018
Barbour	12	15	16	8	3	8	5
Berkeley	21	31	35	20	22	14	13
Boone	7	9	12	23	16	13	11
Braxton	180	140	155	128	148	149	125
Brooke	4	2	3	11	7	5	0
Cabell	13	17	14	10	2	5	7
Calhoun	61	83	46	44	48	46	57
Clay	72	52	42	43	40	32	17
Doddridge	11	10	16	12	16	8	8
Fayette	27	39	50	24	29	59	34
Gilmer	196	168	153	290	213	132	137
Gilmer (FCI)	175	103	139	135	82	54	56
Grant	2	3	7	21	20	23	11
Greenbrier	10	14	14	16	14	16	16
Hampshire	8	1	6	9	11	4	1
Hancock	3	2	2	3	2	1	0
Hardy	5	2	2	1	8	4	4
Harrison	37	52	36	24	28	28	25
Jackson	23	21	18	15	20	23	34
Jefferson	7	6	13	8	7	8	5
Kanawha	52	68	48	47	49	41	37
Lewis	72	80	84	75	57	53	50
Lincoln	7	3	5	10	8	5	2
Logan	7	8	16	14	16	13	6
Marion	10	12	7	17	13	14	13
Marshall	11	7	8	14	15	11	4
Mason	16	14	17	5	9	5	13
McDowell	6	9	12	10	6	8	0

West Virginia County Enrollment (continued)							
County	2012	2013	2014	2015	2016	2017	2018
Mercer	9	7	13	12	8	5	3
Mineral	2	5	4	3	2	3	0
Mingo	4	2	0	4	0	3	0
Monongalia	4	5	7	8	8	5	11
Monroe	3	3	4	2	4	1	6
Morgan	5	4	5	1	4	4	2
Nicholas	91	112	90	77	73	75	71
Ohio	3	4	2	22	16	8	0
Pendleton	18	14	14	11	9	10	2
Pleasants	4	8	8	4	4	5	5
Pocahontas	18	20	19	20	17	18	17
Preston	3	4	7	7	5	4	1
Putnam	13	15	9	9	12	12	18
Raleigh	50	32	50	57	67	74	67
Randolph	50	58	50	39	97	155	15
Randolph (HCC)**	-	-	-	-	-	-	103
Ritchie***	71	107	82	46	28	41	10
Roane	52	51	31	26	20	32	38
Summers	9	4	6	9	5	3	0
Taylor	10	12	12	9	9	5	1
Tucker	8	7	8	11	6	6	7
Tyler	4	6	5	12	15	11	7
Upshur	33	25	16	15	16	26	17
Wayne	4	5	6	6	9	9	1
Webster	24	28	62	75	61	65	50
Wetzel	5	8	8	9	6	11	13
Wirt	12	14	12	13	8	26	9
Wood	37	39	23	26	9	15	21
Wyoming	5	6	11	36	20	26	9

Residence Hall Occupancy Rates							
Spring 2018							
Hall Name	Room Type	# of rooms	Max # students	# occupants	Occupancy Rates	Male	Female
Goodwin	Single	192	192	168	88%	98	70
	Double	145	290	211	73%	121	90
	Total	337	482	379	79%	219	160
Pioneer Village	Single	152	152	126	83%	71	55
Sub Total	Single	344	344	294	85%	169	125
Sub Total	Double	145	290	211	73%	121	90
Grand Totals	Total	489	634	505	80%	290	215

Calculated on the end of the 2nd week of class.

Residence Hall Occupancy Rates							
Fall 2018							
Hall Name	Room Type	# of rooms	Max # students	# occupants	Occupancy Rates	Male	Female
Goodwin	Single	192	192	187	97%	112	75
	Double	145	290	261	90%	138	123
	Total	337	482	448	93%	250	198
Pioneer Village	Single	156	156	145	94%	73	72
Riverfront*	Double	44	88	32	36%	20	12
Sub Total	Single	348	348	332	95%	185	147
Sub Total	Double	189	378	293	78%	158	135
Grand Totals	Total	537	726	625	86%	343	282

*Riverfront first opened Fall 2018 with only half of the rooms available

Student/Faculty Ratios¹

Term	FTE Students	FTE Faculty	FTE Student/Faculty Ratio
Fall 2011	1412	80	18:1
Fall 2012	1445	93 ²	16:1
Fall 2013	1330	83	16:1
Fall 2014	1279	81	16:1
Fall 2015	1251	72	17:1
Fall 2016	1263	69	18:1
Fall 2017	1262	67	18:1
Fall 2018	1174	67	17:1

¹ Ratios computed by Student FTE (student total credit hours produced / 15) ; Faculty FTE (full-time faculty + 1/3 of part-time faculty)

² Reflects an increase in the number of courses being delivered to Adult Learners and High School students (dual credit).

Full-Time Instructional Faculty by Academic Rank

	Professor		Associate Professor		Assistant Professor		Instructor		Lecturer, Graduate Assistant & Other		
Term	#	%	#	%	#	%	#	%	#	%	Total
Fall 2012	11	17%	17	25%	29	44%	9	14%	0	0%	66
Fall 2013	11	16%	16	23%	34	49%	8	12%	0	0%	69
Fall 2014	9	13%	20	30%	32	48%	6	9%	0	0%	67
Fall 2015	8	13%	17	27%	29	45%	8	13%	2	2%	64
Fall 2016	8	13%	21	35%	22	37%	8	13%	1	2%	60
Fall 2017	9	16%	20	35%	22	37%	5	9%	0	0%	58
Fall 2018	10	17%	21	37%	18	32%	1	2%	7	12%	57

Full-Time Instructional Faculty by Tenure Status

	Professor			Associate Professor			Assistant Professor			Instructor			Lecturer, Graduate Assistant & Other			Total		
Term	#	Tenured	%	#	Tenured	%	#	Tenured	%	#	Tenured	%	#	Tenured	%	#	Tenured	%
Fall 2012	11	11	100%	17	16	94%	29	3	10%	9	0	0%	0	0	0%	66	30	45%
Fall 2013	11	11	100%	16	15	94%	34	5	15%	8	0	0%	0	0	0%	69	31	45%
Fall 2014	9	9	100%	20	20	100%	32	4	13%	6	0	0%	0	0	0%	67	33	49%
Fall 2015	8	8	100%	17	17	100%	29	5	17%	8	0	0%	2	0	0%	64	34	54%
Fall 2016	8	8	100%	21	21	100%	22	5	23%	8	0	0%	1	0	0%	60	34	57%
Fall 2017	9	8	89%	20	19	95%	24	3	13%	5	0	0%	0	0	0%	58	30	52%
Fall 2018	10	10	100%	21	20	95%	18	1	6%	1	0	0%	7	0	0%	57	31	54%

Full-Time Instructional Faculty by Highest Degree Held

Term	Doctoral		Masters		First Professional		Bachelors		Total
	#	%	#	%	#	%	#	%	
Fall 2012	35	53%	30	45%	1	2%	0	0%	66
Fall 2013	36	52%	31	45%	2	3%	0	0%	69
Fall 2014	34	51%	31	46%	2	3%	0	0%	67
Fall 2015	32	50%	28	44%	1	1%	3	5%	64
Fall 2016	28	47%	28	47%	1	2%	3	5%	60
Fall 2017	30	52%	27	27%	1	2%	0	0%	58
Fall 2018	35	61%	19	33%	1	2%	2	4%	57

Part-Time Instructional Faculty by Highest Degree Held

Term	Doctoral		Masters		First Professional		Bachelors		Other		Total
	#	%	#	%	#	%	#	%	#	%	
Fall 2012 ¹	7	9%	62	76%	3	4%	9	11%	0	0%	81 ¹
Fall 2013	6	14%	28	67%	2	5%	5	12%	1	2%	42
Fall 2014	4	9%	31	76%	2	5%	2	5%	2	5%	41
Fall 2015	4	16%	16	64%	0	0%	4	16%	1	4%	25
Fall 2016	3	11%	22	79%	0	0%	2	7%	1	3%	28
Fall 2017	2	7%	23	85%	0	0%	2	7%	0	0%	27
Fall 2018	3	9%	25	78%	1	3%	3	9%	0	0%	32

¹ Reflects an increase in the number of courses being delivered to Adult Learners and High School students (dual credit).

Full-Time Instructional Faculty by Gender

Term	Male		Female		Total Number
	Number	Percentage	Number	Percentage	
Fall 2012	41	62%	25	38%	66
Fall 2013	42	61%	27	39%	69
Fall 2014	42	63%	25	37%	67
Fall 2015	43	67%	21	33%	64
Fall 2016	43	72%	17	28%	60
Fall 2017	37	64%	21	36%	58
Fall 2018	34	60%	23	40%	57

Full-Time Instructional Faculty by Ethnicity

	White, Non-Hispanic		Black, Non-Hispanic		Hispanic		Asian or Pacific Islander		American Indian or Alaskan Native			
Term	#	%	#	%	#	%	#	%	#	%	Total	% Minority
Fall 2012	63	95.5%	1	1.51%	1	1.51%	1	1.51%	0	0.0%	66	4.5%
Fall 2013	65	94.2%	0	0%	1	1.45%	3	4.35%	0	0.0%	69	5.8%
Fall 2014	62	92.5%	0	0%	1	1.49%	4	5.97%	0	0.0%	67	7.5%
Fall 2015	58	90.6%	0	0%	2	3.1%	4	6.3%	0	0%	64	9.4%
Fall 2016	56	93.3%	0	0%	2	3.3%	2	3.3%	0	0%	60	6.7%
Fall 2017	55	95%	0	0%	0	0%	3	5%	0	0%	58	5.2%
Fall 2018	53	93%	1	2%	1	2%	2	3%	0	0%	57	7.0%

Full-Time Instructional Faculty - Average Nine-Month Base Salary¹

	Professor		Associate Professor		Assistant Professor		Instructor		Lecturer, Graduate Assistant & Other			
Term	#	Salary	#	Salary	#	Salary	#	Salary	#	Salary	Total	Average Salary
Fall 2012	11	\$69,758	17	\$60,384	29	\$48,981	9	\$40,728	0	\$0	66	\$54,005
Fall 2013	11	\$68,381	16	\$61,692	34	\$48,789	8	\$39,846	0	\$0	69	\$53,867
Fall 2014	9	\$70,711	20	\$63,357	32	\$50,428	6	\$43,748	0	\$0	67	\$56,414
Fall 2015	8	\$70,649	17	\$61,479	29	\$49,848	8	\$42,268	2	\$41,252	64	\$54,059
Fall 2016	8	\$65,399	21	\$58,610	22	\$47,234	8	\$44,070	1	\$48,288	60	\$53,233
Fall 2017	9	\$64,517	20	\$58,033	24	\$46,579	5	\$40,780	0	0	58	\$52,812
Fall 2018	10	\$65,947	21	\$58,185	18	\$50,281	1	\$45,000	7	\$42,627	57	\$54,909

¹Data does not include pay for extra or extended assignments.

Semester Tuition and Fees 2011-2018

	2011-12	2012-13	2013-14	2014-15	2015-16	2016-17	2017-18	2018-19
Resident	\$2,676	\$2,930	\$3,192	\$3,348	\$3516	\$3672	\$3671	\$3654
Non-Resident	\$6,360	\$6,912	\$7,200	\$7,560	\$7944	\$8300	\$8299	\$8259
Metro Rate	\$4,416	\$4,812	\$5,196	\$5,460	\$5736	\$5944	\$5943	\$5964

Annual Tuition Comparisons Fall 2018

Institution Name	In-State Tuition	Out-of-State Tuition	Metro Rate	Room & Board
Bluefield State College	7488	14352	10584	NA
Concord University	8050	17702	NA	9762
Fairmont State University	7738	16814	11607	9730
Glenville State College	7308	16518	11928	10182
Shepherd University	7784	18224	NA	10242
West Liberty University	7990	15930	13488	9614
West Virginia State University	8237	17691	13925	12538
Average	7799	16747	12306	10344

Source: College Web sites

Revenues Summarized¹				
	2014-15	2015-16	2016-17	2017-18
Operating Revenues:				
Tuition and fees	\$7,826,976	\$9,254,917	\$9,018,375	\$10,183,415
Government Contracts and Grants	\$2,919,401	\$3,146,254	\$3,144,355	\$2,542,610
Private gifts, grants, and contracts	\$2,175,292	\$2,516,510	\$1,636,957	\$799,691
Sales and services of educational activities	\$523,336	\$286,364	\$314,841	\$482,625
Sales and services of auxiliary enterprises	\$6,441,727	\$6,753,247	\$7,357,122	\$8,696,576
Other sources	\$912,606	\$875,123	\$767,529	\$42,316
Payments made on behalf of College	\$241,860	\$241,576	\$276,406	\$1,207,109
Total Operating Revenues	\$20,799,338	\$22,832,415	\$22,515,585	\$23,954,342
Non-Operating Revenues:				
Government Appropriations	\$6,318,177	\$5,793,050	\$5,773,569	\$5,622,099
Federal PELL Grants	\$2,885,617	\$2,878,945	\$3,413,819	\$3,708,382
Income from investments	\$3,890	\$6,304	\$14,860	\$42,706
Total Non-Operating Revenues	9,449,544	\$8,919,875	\$9,202,248	\$9,373,187
Other Capital Proceeds from Commission	\$212,000	\$0	\$0	\$0
\$0Capital Gifts (Private)	\$1,334,424	\$50,000	\$22,849	\$0
Capital Appropriations from State	\$0	\$0	\$0	\$0
Total revenues	\$31,795,306	\$31,802,290	\$31,740,682	\$33,327,529

¹See GSC Audited Financial Statements for Full Revenue Reports

Educational and General (E&G) Expenditures Summarized¹

	2014-15	2015-16	2016-17	2017-18
Operating Expenses:				
Instruction	\$5,854,459	\$6,172,938	\$5,525,152	\$5,559,186
Academic Support	\$1,169,702	\$1,038,372	\$653,514	\$681,680
Student Services	\$2,832,967	\$2,151,920	\$2,154,071	\$2,150,814
General Institutional Support	\$3,304,831	\$3,257,314	\$3,269,487	\$3,276,361
Operation and Maintenance of Plant	\$2,826,411	\$2,439,472	\$2,350,823	\$3,052,526
Scholarships and Aid	\$8,504,662	\$9,326,015	\$10,746,195	\$10,805,618
Auxiliary Enterprises	\$4,833,043	\$4,563,760	\$4,406,065	\$3,907,943
Depreciation	\$2,430,014	\$2,446,365	\$2,341,091	\$2,415,715
Fees Assessed by Policy Commission	\$73,794	\$69,062	\$73,411	\$70,544
Loan Cancellations and Write-Offs	\$1,369	\$361	\$992	\$1,065
Total Operating Expenses	\$31,831,252	\$31,465,579	\$31,520,801	\$31,921,442
Non-Operating Expenses:				
Interest on Indebtedness	\$1,683,723	\$1,683,723	\$1,438,293	\$1,543,866
Other*	\$17,982	\$36,058	\$11,065	\$102,390
Total Non-Operating Expenses	\$1,701,705	\$1,675,138	\$1,449,358	\$1,646,256
Total Expenditures	\$33,532,957	\$33,140,717	\$32,970,159	\$33,567,698

*Fees assessed by the commission for debt services + other if applicable

¹See GSC Audited Financial Statements for Full Expenditure Reports

Financial Aid Summary First-Time Full-Time Freshmen

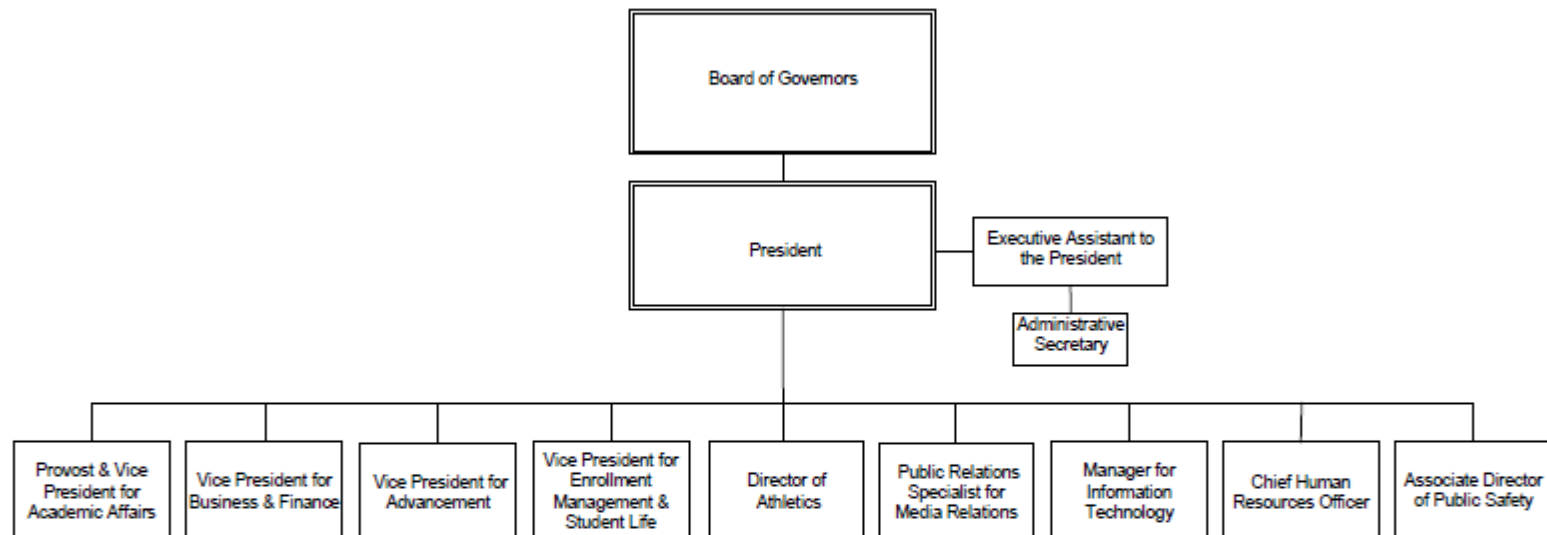
	2013-14	2014-15	2015-16	2016-17	2017-18
Applied for Financial Aid	280	257	282	320	304
Determined to have Financial need	239	226	256	306	274
Awarded Financial Aid	235	226	253	306	272
Average Financial Package	\$11,763	\$13,468	\$14,532	\$15,526	\$15,224

Financial Aid Processed

	2013-2014	2014-2015	2015-2016	2016-17	2017-18
All types of Aid	\$9,185,718	\$9,363,642	\$10,238,160	\$10,389,982	\$9,688,325
Loans Processed	\$6,210,546	\$5,668,041	\$6,056,709	\$5,172,892	\$6,266,135
Total	\$15,396,264	\$15,031,683	\$16,294,869	\$15,562,874	\$15,954,460



GLENVILLE STATE COLLEGE
ORGANIZATIONAL CHART
2018-2019



Updated 02/11/19

Committee Membership – 2018-2019

Academic Appeals	Academic Policy	Assessment Committee	Athletic Committee
Ann Reed, Chair & Adm. Liaison	Ken Lang - Chair	Melody Wise, Chair	Dwight Heaster, Chair
Leslie Ward	Kevin Evans – Vice Chair	David O’Dell, Vice Chair	Jesse Skiles, Adm. Liaison
Jeff Hunter	Gary Morris – adm liaison	Chris Cosner, Secretary	Duane Chapman
David Lewis	Tim Henline	Gary Morris – Adm. Liaison	Dana Wilson
Nabil Nasser	Jeff Hunter	Kandas Queen	
Jonathan Minton	Lloyd Bone	Ken Lang	
Avan McHenry	Dana Wilson	Shelly Ratliff	
Matthew Thiele	Brian Perkins	Dana Wilson	
Shara Curry	Schuyler Chapman	Adam Black	
	Ed Wood	Ed Wood	
	Colton Ring	James Bradley IR	

College Leadership Council	Curriculum Committee	Enrollment Management	Faculty Development
Gary Morris, Chair & Adm. Liaison	Sarah Sawyer, Chair	Chelsea Stickelman	Gary Morris, Adm. Liason
Tim Henline, Vice Chair	Matthew Thiele, Vice-Chair	Jason Phares	Gary Arbogast
Chelsea Stickelman	Gary Morris, Adm. Liaison	Stephany Harper	Jason Yeager
Colton Ring	Cheryl McKinney	Terri Weiford	Kevin Cain
Jason Barr	Ken Lang	Duane Chapman	David Lewis
Leslie Ward	Jeff Hunter		Jong-Hoon Yu
Marjorie Stewart	Jason Barr		Rico Gazal
Jeff Hunter	Rico Gazal		Marjorie Stewart
Matthew Thiele	Schuyler Chapman		Wenwen Du
Denise Ellyson	Dwight Heaster		
Ann Reed	David O’Dell		
Caren Jenkins	Lloyd Bone		
Jesse Skiles	Colton Ring		
	Denise Ellyson		

Committee Membership – 2018-2019

Faculty Senate	Financial Aid Appeals	HLC Assurance Team	Honors Program
Tim Henline, President	Stephany Harper, Chair	Gary Morris, Chair	Schuyler Chapman, Chair
Kevin Evans, VP	Dennis Wemm	Duane Chapman	Gary Morris
Amanda Chapman, Secretary	Connie O'Dell	Adam Black	Denise Ellyson
Gary Morris, Adm. Liaison	Terri Weiford	Melody Wise	Donal Hardin
Jeff Bryson	Jenny Boggs	David O'Dell	Gerda Kumpiene
Shelly Ratliff	Ann Reed	Larry Baker	James Maku
Chris Cosner			
Dana Wilson			
Adam Black			
Marjorie Stewart			
Jeremy Keene			
Art DeMatteo			
Dennis Wemm			
Jonathan Minton			
Lloyd Bone			
David O'Dell			
Kandas Queen			
Wenwen Du			
Megan Darby			

Internationalization	Library Advisory Committee	Promotion & Tenure	Retention Committee
Megan Gibbons, Chair	Gary Arbogast	Gary Arbogast	Gary Morris, Admin Liaison
Wenwen Du	Jeff Bryson	Rico Gazal	Jason Barr
Rico Gazal	Shelly Ratliff	Fred Walborn	Shara Curry
Dwight Heaster	John McKinney	Lloyd Bone	
Jeremy Keene	Kevin McKee	Megan Gibbons	
Leslie Ward	Earl Thompson	Ed Wood	
Melody Wise	Melissa Gish		
Ed Wood	Jeremy Keene		
	Art DeMatteo		
	Anna Childers		
	Leslee Coffman		
	Stacy Adkins		
	Jason Gum		
	Gary Morris		

Committee Membership – 2018-2019

Scholarship & Financial Aid	Student Life	Textbook Affordability	
Marty Carver, Admin Liason	Connie O'Dell	Gary Morris, Chair, Adm. Liaison	
Stephany Harper	Ed Wood	Jason Gum	
David Hutchison	Jong Hoon Yu	Maureen Gildein	
Rico Gazal	Jennifer Wenner	Terri Weiford	
Lloyd Bone	Avan McHenry	Jong Hoon Yu	

