

Fact Book

2009-10



GLENVILLE
STATE COLLEGE



November 2009

The faculty, staff, and administration of Glenville State College take pride in being a student-centered college. We know our students, their names, their academic achievements and challenges, their aspirations, and their progress toward those aspirations.

The Glenville State *Fact Book* collects individual stories into a statistical snapshot. Of course, no picture of Glenville State, at any particular moment in time, tells the whole story. But the *Fact Book* does provide a glimpse into our response to our clients, students, and society in the 21st century. The *Fact Book* is a valuable guidebook to assuring that Glenville State is true to its mission and to charting its progress to becoming “the best small public liberal arts college in the country.”

Sincerely,

A handwritten signature in black ink that reads 'Peter B. Barr'. The signature is written in a cursive, flowing style.

Peter B. Barr
President



Table of Contents

Fact Book 2009-10

Table of Contents

GENERAL INFORMATION

Preface.....	1
History of Glenville State College.....	1
Our Vision	2
Our Mission	2
Our Core Values	2
Glenville State College Board of Governors	3
Glenville State College Administration	4
Degree Programs – Baccalaureate Degree Programs	6
Degree Programs – Associate Degree Programs	7
Certificate Programs	7
Glenville State College Foundation	8
Glenville State College Foundation Board	9

ENROLLMENT

Applicants Accepted and Enrolled	10
First Time Freshman Enrollment Graph.....	11
ACT Scores and SAT Scores.....	12
Enrollment in One or More Developmental Courses	12
FTE Enrollment.....	13
Attendance Status (Full-Time Enrollment and Part-Time Enrollment)	13
Full and Part Time Enrollment Graph.....	14
Headcount and FTE by Location	15
Enrollment Trends (1999-2008)	15
Headcount Enrollment	
Full-Time Enrollment (Out-of-State)	16
Geographic Distribution Map.....	17
Headcount Enrollment – Fall (Class Rank).....	18
Percentage of Enrollment by Class	18
Headcount Enrollment - Spring (Class Rank).....	19
Headcount Enrollment - Summer (Class Rank)	19
Headcount Enrollment by Academic Programs.....	20
Undergraduate Students: Ethnicity	22
Enrollment by Ethnicity Trends.....	23
Undergraduate Enrollment: Gender.....	24
Enrollment by Gender Graph	24
Student-Faculty Ratios (FTE)	25

GRADUATION AND RETENTION

Degrees Conferred	26
First-Time, Full-Time Students First to Second Year Retained.....	26
Six Year Graduation Rates (First-time, Full-Time Freshmen)	27
Six Year Graduation Rates: Freshman Athletes.....	27
Graduation by Academic Programs	28

STUDENTS

Student Profile	30
Average Age of Students.....	31
Grade Point Averages	31
Students by County by Number of Students.....	32
Students by County by Percent of Headcount	34
Non-Traditional Students	
Freshman Students - 25 years and older.....	36
Part-Time Students - 25 years and older.....	37
Undergraduate Enrollment - 25 years and older	37
Residence Hall Occupancy	38

PERSONNEL

Average Age of Faculty.....	39
Average Nine-Month Salary of Full-Time Instructional Faculty.....	39
Full-Time Faculty	
Full-Time Instructional Faculty by Academic Rank	40
Tenure of Full-Time Instructional Faculty	40
Full-Time Instructional Faculty by Ethnicity	41
Full-Time Instructional Faculty by Gender.....	41
Highest Degree Held by Full-Time Instructional Faculty.....	42
Part-Time Faculty	
Highest Degree Held by Part-Time Faculty	42
Full-Time Classified and Non-Classified Staff	43

FINANCIAL

Educational and General (E&G) Expenditures	44
Revenues	45
Semester Tuition and Fees	45
Student Scholarships, Grants, Loans	46

MISCELLANEOUS

West Virginia In-State College Going Rates by Hidden Promise Consortium	48
Hidden Promise Consortium Data.....	49
Fall Enrollment Comparison.....	50
Fall Enrollment Comparison Graph	50
Fall 2009 Tuition Comparison	51
Fall 2009 Tuition Comparison Graph.....	51
Crime Statistics 1999-2008.....	52



General Information

Fact Book 2009-10

Glenville State College Fact Book 2009-10

Any questions concerning material contained in this book should be addressed to:

Glenville State College

Office of Academic Affairs

200 High Street

Glenville, WV 26351

Phone: 304-462-4100

FAX: 304-462-8619

Email: *Kathy.Butler@glenville.edu*

Preface

The data in this book is published annually by Glenville State College. The purpose of this data book is to provide the most recent information and numbers available from the preceding year. Although updated annually, because of ongoing changes and innovations at the College, data are constantly changing. In cases where more recent information is needed, inquiries may be directed to the specific office in question.

History of Glenville State College

Glenville State College was founded in 1872 to serve the higher education needs of central West Virginia. Glenville State has gained wide recognition for its teaching excellence.

By 1910, the College enrollment had exceeded the population of Glenville and grew into a full four-year college by 1931. Teacher preparation continued to be the central mission as over the years. The campus became known as ‘the Lighthouse on the Hill’ for both the quality of the teaching and the quality of Glenville State graduates.

Throughout its history, Glenville State has maintained a long tradition of teaching excellence by professors who care about each student as an individual, who take the time to get to know each student’s goals, and who are committed to helping students get an education that will prepare them for a successful career.

Today, Glenville State maintains a strong focus on teacher preparation, while offering additional degree programs in disciplines that support the needs of the workplace in the 21st century.

The recognized strengths – from a caring and friendly campus to the affordability of a quality education -- have been an integral part of the Glenville State experience. A continued commitment to its community roots and its desire to be a valued source of educational excellence in the future bodes well for Glenville State’s yet-to-be-written history.

Our Vision

—— **Education that Builds Success** ——

Our Mission

The mission is Glenville State's day-to-day purpose; what it does to help reach our vision. Our mission is rooted in the purpose of the institution. The following is the mission for Glenville State:

Glenville State College provides: a tradition of high quality education through innovation in the design, delivery, and evaluation of programs and services, workforce development, and comprehensive student services; a community of active learners dedicated to lifelong learning, effective teaching, applied scholarship, creative activities, and service; leadership that promotes excellence in learning, teaching, cultural vitality, and economic development in a global community.

Our Core Values

Values, or what we believe in as an institution, are the behaviors we demonstrate in all that we do. These attributes are essential in maintaining and supporting the culture of our institution. These are what we want others to know are important to Glenville State as it serves the public. These are important and should not change from time to time, situation to situation or person to person, but rather the underpinning of our future work.

Student-Centered ❖ Community ❖ Integrity ❖ Tradition ❖ Leadership ❖ Family

Student-Centered ❖ We put the student first and foremost, guided by what is best for the student when framing our decisions and in all our processes across the entire organization. We strive to remove barriers and enhance the learning experience with every faculty, staff, and administrator personally committed to serving students in efficient and responsive ways regardless of whom, when or where.

Community ❖ We are a community of learners that value our cohesive relationships with one another. We seek inclusiveness through listening and collaborative work. We are collectively supportive at all times through open communication and working together as a team on campus, wherever our work takes us, and in the communities where we live or serve.

Integrity ❖ We are always truthful, ethical and accountable for doing what we say we will do. We demonstrate open trust, respect for our diversity and fairness in all we do. We are responsive, consistent and committed to continuous improvement in all areas.

Tradition ❖ We are proud of our rich tradition of providing high quality educational opportunities and the value of education for creating futures. We keep our traditions alive as a way of celebrating our past accomplishments and as a foundation for responding to new opportunities and challenges in an ever changing world.

Leadership ❖ We recognize a solemn responsibility to lead. We prepare leaders for our society who are thoughtful, productive, engaged, and responsive citizens. We continually foster innovation that enriches learning environments and demonstrating excellence in educational programs and services.

Family ❖ We are a strong family as reflected in our caring, nurturing and marked friendliness that sets us apart from others. We uphold a culture that respects each other and our diversity, while being supportive individually and as a team. We actively communicate and engage our extended family from parents to alumni and other friends of our institution.

Adopted by the Board of Governors
June 15, 2005

Glenville State College Board of Governors

Sue Morris, Chair

Post Office Box 397
Glenville, West Virginia 26351

Jerry Milliken, Vice Chair

522 Clay Road
Spencer, West Virginia 25276

Marjorie Burke

Post Office Box 300
Sand Fork, West Virginia 26430

R. Terry Butcher

Post Office Box 100
Glenville, West Virginia 26351

James L. Estep

1000 Technology Drive
Suite 1000
Fairmont, West Virginia 26554

Bill Hanlin

2447 North Pleasants Highway
St. Marys, West Virginia 26170

Thomas McPherson

Post Office Box 221
Glenville, West Virginia 26351

R. Fred Radabaugh

111 Greenberry Drive
Elkview, West Virginia 25071

Faculty Representative

Paul Peck

Glenville State Campus

Staff Representative

Jason Phares

Glenville State Campus

Student Representative

Marlon Henry

Glenville State Campus

Glenville State College Administration

Officers of the College

Peter B. Barr, D.B.A.

President

M. Katherine Butler, Ed.D.

Provost and Senior Vice President

Robert O. Hardman, II, A.B.

Executive Vice President

William D. Nicholson, II, Ph.D.

Senior Vice President for External Relations

Dennis J. Pounds

Vice President for College Advancement and

Executive Director of the Foundation

Richard N. Weldon, J.D.

Chief Information Officer

Jerry L. Burkhammer, Jr., M.S.

Dean of Student Affairs

Academic Departments

Sherry W. Jones, Ph.D.

Chair, Department Of Business

Jami L. Myers, Ph.D.

Chair, Department Of Criminal Justice

Kevin G. Cain, Ed.D.

Dean, Department Of Teacher Education

D. Wayne De Rosset, M.A.

Chair, Department Of English

Lloyd E. Bone, M.M.

Chair, Department Of Fine Arts

C. Richard Sypolt, M.S.

Chair, Department Of Land Resources

Alison S. Witte, D Litt et Phil.

Chair, Department Of Science and Math

Jill Haasch, Ph.D.

Chair, Department Of Social Science

General Administrative Staff

Richard D. Accord, B.S., C.P.A.

Controller

Annette D. Barnette, B.A.

Director of Public Relations

Janet K. Bailey, M.S.

Director of Athletics

Daniel R. Bell

Director of Public Safety

Neal Benson, B.S.B.A.

Database Administration Manager

Janice A. Cannan-Weldon, J.D.

Director of Sponsored Programs Administration

D. Duane Chapman, M.F.A.

Vice President for Enrollment Management

Kipp Colvin

Director of Student Activities

Amy E. Fiddler, M.S.

Director of Academic Support Center

Buddy M. Griffin, B.A.

Director of Cultural Events

Karen D. Lay, M.A.

Director of Financial Aid

Brenda McCartney, B.A.

Associate Registrar

General Administrative Staff (continued)

David E. Millard, Ph.D.	<i>Special Assistant to the President for Marketing Communications</i>
Mark A. Mills, M.A.	<i>Deputy Director of the Center for Criminal Justice Studies</i>
Debra A. Nagy	<i>Special Assistant to the President/ Director of Alumni Affairs</i>
Thomas R. Ratliff, B.A.	<i>Director of Maintenance and Plant</i>
Joyce E. Riddle	<i>Director of Purchasing</i>
David M. Stalnaker, M.B.A .	<i>Director of Human Resources</i>
Teresa G. Sterns, B.A.	<i>Executive Assistant to the President/ Director of Hidden Promise Scholars Program</i>
Edward T. Toman, M.A.	<i>Director of Jason Project/ Coordinator of Hidden Promise Consortium</i>
Gail L. Westbrook, M.S.	<i>Director/Library I</i>
Joe J. Wilmoth	<i>Assistant Vice President for Facilities</i>

Academic Degree Programs

Baccalaureate Degree Programs

Regents Bachelor of Arts (BORBA)

Interdisciplinary Studies (BA/BS)

Bachelor of Arts in Education (BAED)

Elementary Education

Early Education (PreK-K)
Elementary Education (K-6)
Special Education
Multi-Categorical (K-6)

Middle School Education

English (5-9)
General Mathematics Algebra-I (5-9)
Science (5-9)
Social Studies (5-9)

Secondary Education

Biological Science (9-adult)
Business (5-adult)
Chemistry (9-adult)
Chemistry-Physics (9-adult)
English (5-adult)
General Science (5-adult)
Health (5-adult)
Mathematics (5-adult)
Social Studies (5-adult)
Spanish (5-adult)

Comprehensive

Health and Physical Education
(PreK-adult)
Music (PreK-adult)

Bachelor of Science in Business Administration (BSBA)

Accounting
Computer and Information Systems
Management
Marketing
Resort Area Management
Sport Management

Bachelor of Science in Nursing (BSN)

Pre-Nursing

Bachelor of Science in Behavioral Sciences (BSBS)

Psychology/Sociology (*must have a minor*)

Bachelor of Arts (BA)

Chemistry *
English *
History *
Music*
Bluegrass Music
Instrumental Music
Music Performance
Music Technology
Vocal Music

Bachelor of Science (BS)

Biology *
Business (2+2)
Criminal Justice
Corrections
Law Enforcement
Investigative Science & Technology
Natural Resource Management
Applied Science
Business/Management
Criminal Justice
Environmental Science
Forest Technology
Land Surveying Technology
Landman Technology

* Must be combined with a second major or a minor.

Academic Degree Programs (continued)

Minors which may be combined with Bachelor of Arts, Bachelor of Science, and Bachelor of Science in Behavioral Sciences degrees.

Accounting	Management
Art	Marketing
Behavior Disorders	Mathematics
Biology	Music
Business	Natural Resource Management
Chemistry	Nonprofit Leadership
Communication Arts	Outdoor Recreation
Computer Information Systems	Physics
Criminal Justice	Political Science
English	Psychology
Environmental Science	Social Science
Global Studies	Sociology
History	Spanish
Information and Media Studies	

Associate Degree Programs

Associate of Arts (AA)

General Studies

Associate of Science (AS)

Business
Criminal Justice
Forest Technology*
Land Surveying

* Forest Technology may be combined with a Bachelor of Science in Biology or a Bachelor of Science in Business.

Glenville State College Certificate Programs

Accounting Level I
Accounting Level II
Basic Selling Principles
Basic Skills
Bluegrass Music
Business I
Business II
Business Management Principles
Land Surveying/GIS
Resort Area Management
Studio Artist (Concentration – Painting)

* Must be combined with a second major or a minor.

Glenville State College Foundation

The Glenville State College Foundation, Inc is a private, non-profit tax-exempt [IRS 501(c)(3)] corporation which was founded to acquire and manage a wide range of funds that are used for scholarships, awards, and special projects for the College. Overseen by an active and dedicated Board of Directors, the Foundation was established to:

- Actively solicit funds from internal and external sources through appeals, estate planning, and gifting;
- Receive and use for its purposes, gifts, donations, bequests, and endowments;
- Establish, maintain, manage, handle and administer trust funds for scholarships, endowments, educational research, and other educational, literary, scientific, charitable, philanthropic, fraternal, and benevolent purposes;
- Acquire, own, hold, lease and sell property, real and personal, in connection with its purposes.

Dennis J. Pounds is the Vice President for College Advancement and Executive Director of the Foundation. The Foundation office is located in the Administration Building.

The 2008-09 Annual Fund raised \$47,000.00 of support for the College. Eighty-one percent of those funds were received from alumni and friends, seventeen percent from business and industry, and two percent from faculty and staff. Twenty-one percent of faculty and staff participated in giving to the Annual Fund. Fund disbursements were as follows:

68%	Scholarships
16%	Recruitment and Communication
4%	Facilities and Technology
2%	Faculty and Staff Development
8%	Fundraising
1%	Special Projects
1%	Student Internship

Glenville State College Foundation Board

Timothy B. Butcher
Glenville, West Virginia

George Dee Curtin
Webster Springs, West Virginia

Martha Deel
Milton, West Virginia

William Deel
Milton, West Virginia

Douglas Facemire
Gassaway, West Virginia

Lynn Gilbert
Grantsville, West Virginia

Bill Hanlin
St. Marys, West Virginia

Richard Heffelfinger
Charleston, West Virginia

Ralph Holder
Belpre, Ohio

Mary Lee McPherson
Burnsville, West Virginia

Doug Morris
Glenville, West Virginia

Sue Morris
Glenville, West Virginia

Sandra Pettit
Glenville, West Virginia

Stanley N. Pickens
Clarksburg, West Virginia

R. Fred Radabaugh
Elkview, West Virginia

Gerald Ramsberg
Jane Lew, West Virginia

Mike Ross
Coalton, West Virginia

Greg Smith
Glenville, West Virginia

Mary Bland Strickland
Glenville, West Virginia

John Westfall
Glenville, West Virginia

Charles W. Wilson
Weston, West Virginia

Travis Woodford
Glenville, West Virginia

Craig Worl
Glenville, West Virginia



Enrollment

Fact Book 2009-10

Applicants Accepted and Enrolled

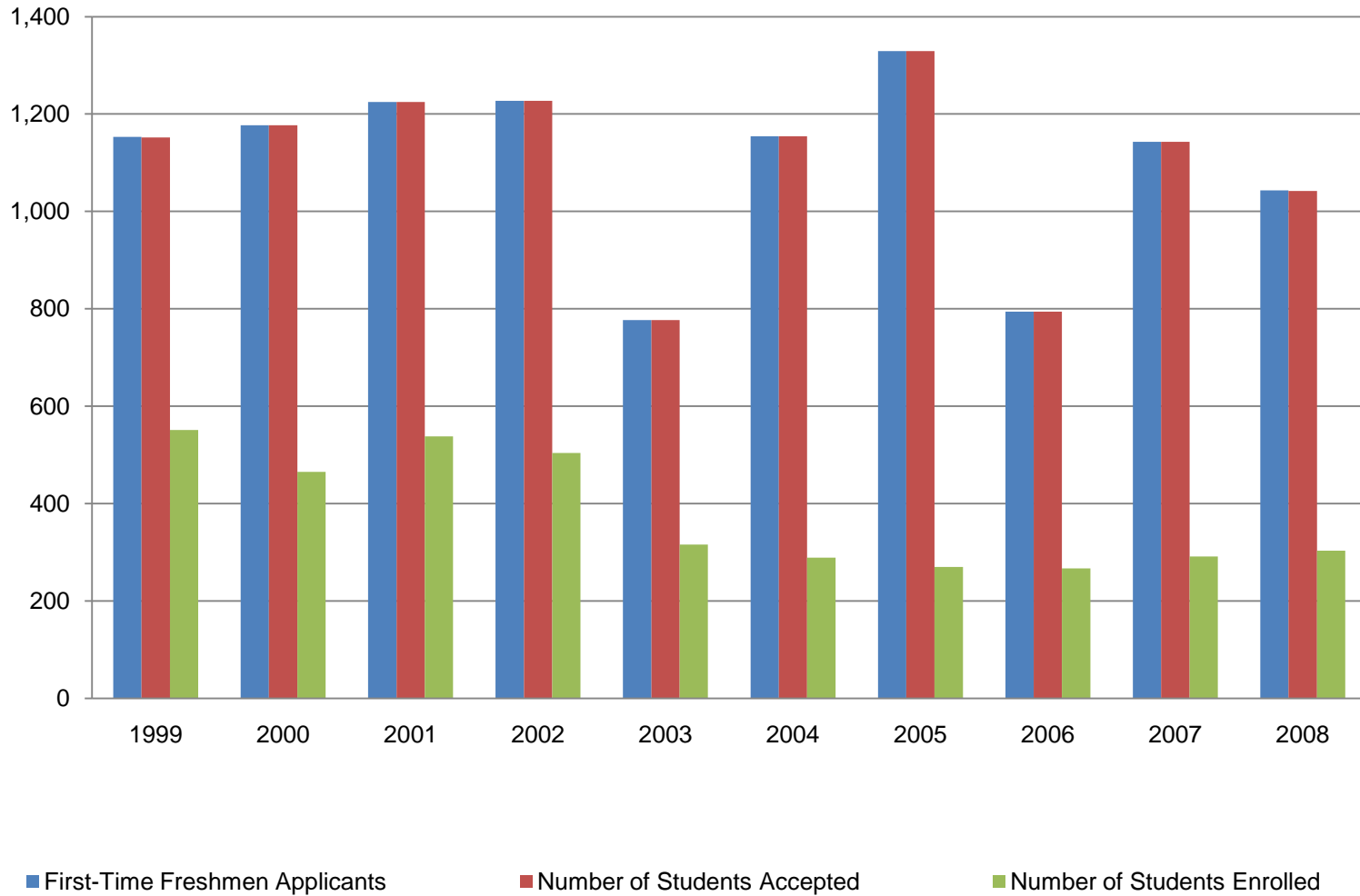
Term	First-Time Freshmen Applicants	Number Accepted	Number Enrolled
Fall 1999	1,153	1,152	551
Fall 2000	1,177	1,177	465
Fall 2001	1,225	1,225	538
Fall 2002	1,227	1,227	504
Fall 2003	777	777	316
Fall 2004	1,154	1,154	289
Fall 2005	1,329	1,329	270
Fall 2006	794	794	267
Fall 2007	1,143	1,143	291
Fall 2008	1,043	629*	303

Data reflects the 2003 mandated separation of the community and technical colleges.

**Indicates numbers of students accepted into a baccalaureate program*

First Time Freshman Enrollment Trends

Fall 1999- Fall 2008



Data reflects the 2003 mandated separation of the community and technical colleges.

ACT Scores and SAT Scores

First-Time/Full-Time Freshmen			
Term	GSC ACT Average	GSC SAT Average	State College System Average
Fall 2001	18.8	943	20.3
Fall 2002	19.4	898	20.3
Fall 2003	19.1	897	20.3
Fall 2004	19.3	867	20.6
Fall 2005	18.9	866	20.3
Fall 2006	18.6	844	20.6
Fall 2007	19.5	834	20.6
Fall 2008	20.0	823	20.7

Enrollment in One or More Developmental Courses

Term	GSC First-Time Full-Time Freshmen	GSC # in Developmental Courses	GSC % in Developmental Courses	State College System %
Fall 2001	471	237	50%	35%
Fall 2002	504	243	48%	34%
Fall 2003	315	188	60%	35%
Fall 2004	289	172	60%	31%
Fall 2005	252	139	55%	22%*
Fall 2006	267	172	64%	21%*
Fall 2007	291	190	65%	20%*
Fall 2008	303	191	63%	NA

*Baccalaureate and Graduate Institutions.

Full-Time Equivalent (FTE) Enrollment

Fall 1999 – Fall 2008

Term	FTE Enrollment
Fall 1999	1,898
Fall 2000	1,846
Fall 2001	1,806
Fall 2002	1,789
Fall 2003	1,205
Fall 2004	1,201
Fall 2005	1,277
Fall 2006	1,218
Fall 2007	1,207
Fall 2008	1,262

Attendance Status

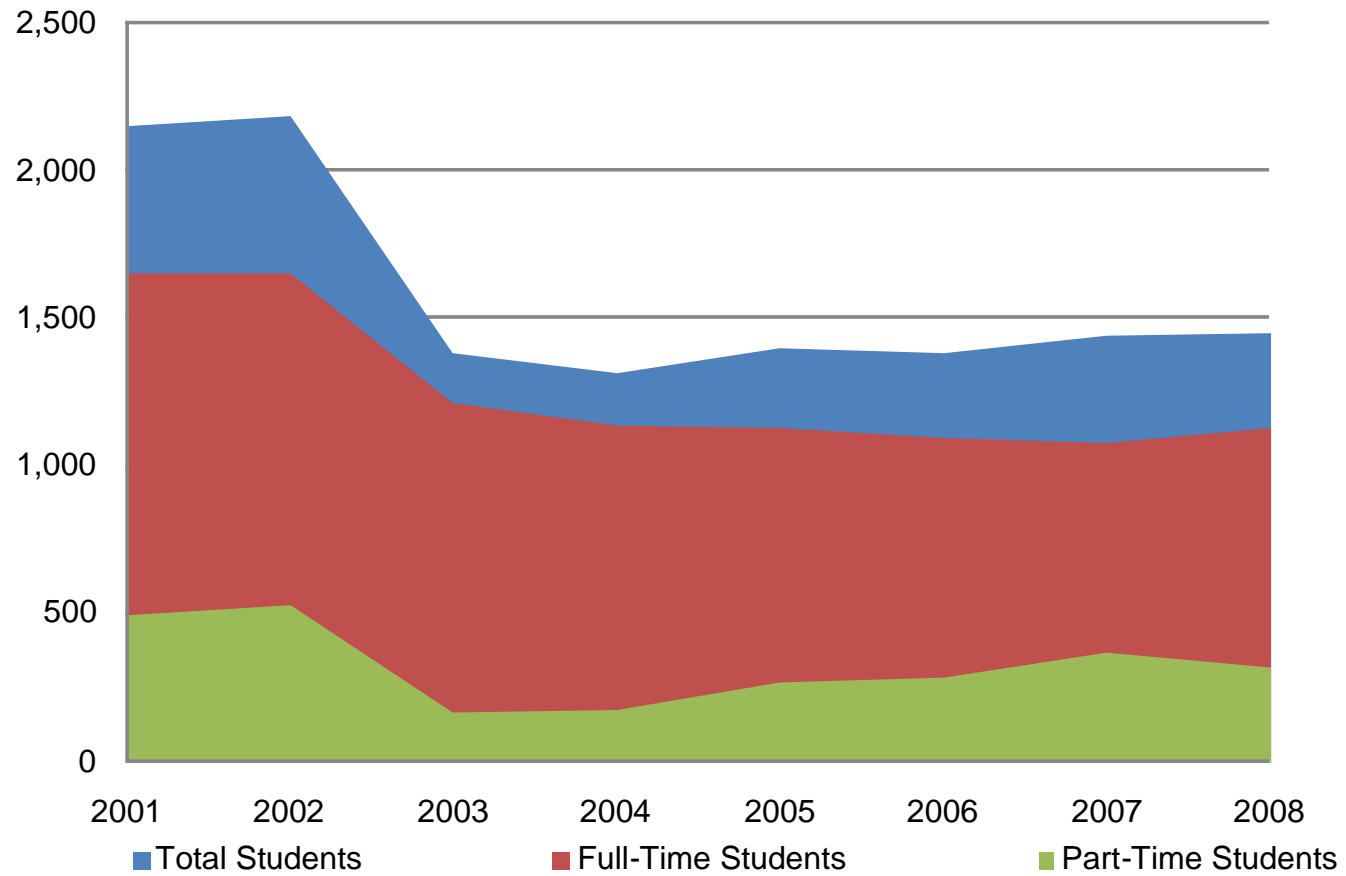
Full-Time/Part-Time Enrollment

Term	Full-Time	Part-Time	Total
Fall 2001	1,650	494	2,144
Fall 2002	1,653	531	2,184
Fall 2003	1,208	169	1,377
Fall 2004	1,136	177	1,313
Fall 2005	1,128	264	1,392
Fall 2006	1,096	285	1,381
Fall 2007	1,078	363	1,441
Fall 2008	1,123	320	1,443

Data reflects the 2003 mandated separation of the community and technical colleges.

Full and Part Time Enrollment

Fall 2001 – Fall 2008



Data reflects the 2003 mandated separation of the community and technical colleges.

Headcount and FTE by Location

	Fall 2004		Fall 2005		Fall 2006		Fall 2007		Fall 2008	
Location	Headcount	FTE	Headcount	FTE	Headcount	FTE	Headcount	FTE	Headcount	FTE
Glenville Campus	1,251	1,065	1,293	1,230	1,161	1,151	1,149	1,128	1,183	1,192
NRTC Campus	NA	NA	NA	NA	17	3	1	0	14	7
Other Locations	62	136	99	47	203	64	291	79	246	63
Total	1,313	1,201	1,392	1,277	1,381	1,218	1,441	1,207	1,443	1,262

Enrollment Trends, 1999-2008

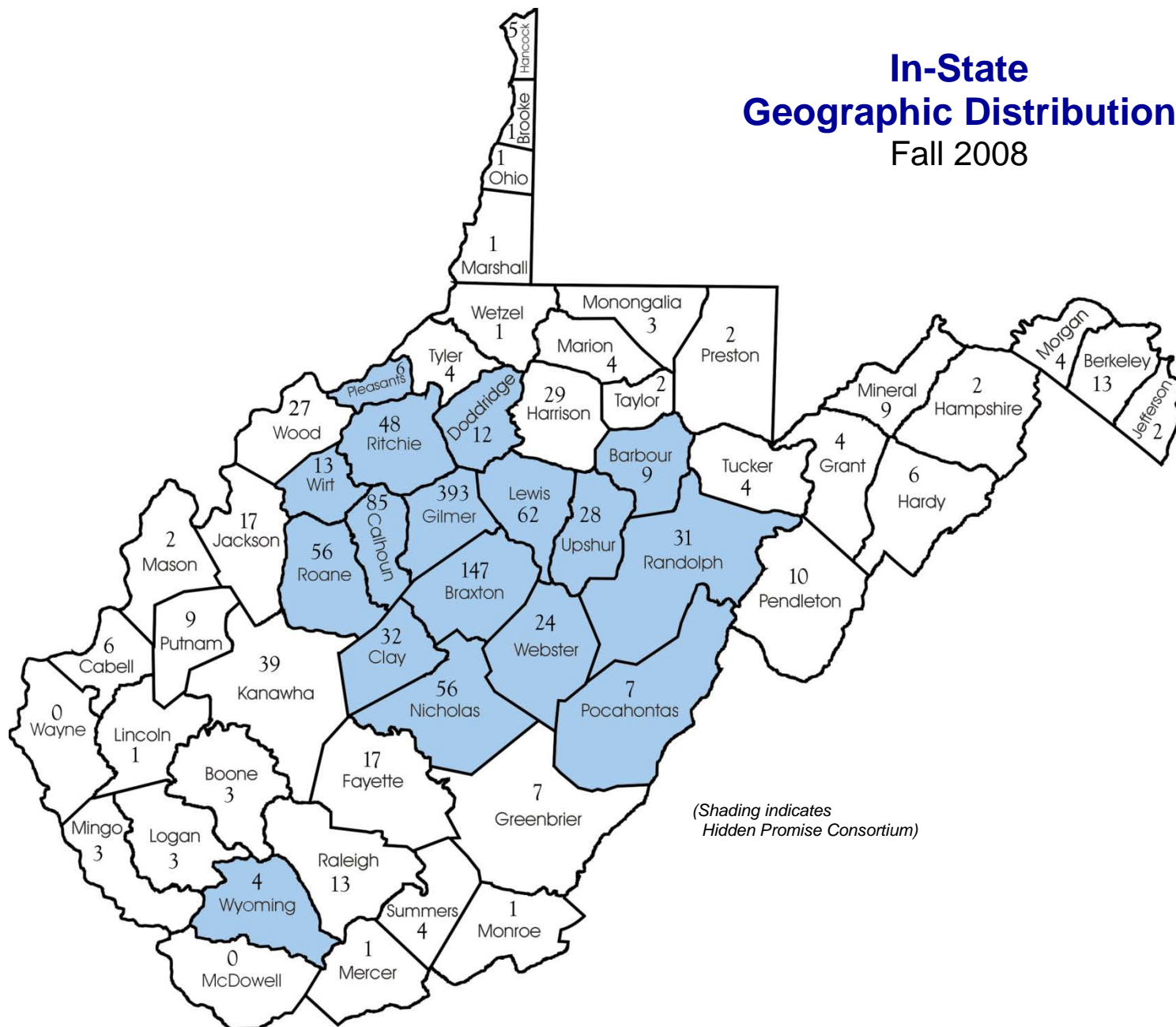
	Fall 1999	Fall 2000	Fall 2001	Fall 2002	Fall 2003	Fall 2004	Fall 2005	Fall 2006	Fall 2007	Fall 2008
Credit Headcount	2,260	2,198	2,144	2,184	1,377	1,313	1,392	1,381	1,441	1,443
Full-time Equivalent (FTE)	1,898	1,846	1,807	1,789	1,205	1,201	1,277	1,218	1,207	1262
First-time Freshmen	551	465	538	504	315	289	270	268	291	303
Full-time Undergraduate Transfers In	107	108	97	108	122	54	55	57	77	90

Data reflects the 2003 mandated separation of the community and technical colleges.

Full-Time Student Enrollment Out-of-State Residence

Home of Residence	2004	2005	2006	2007	2008
Connecticut	0	0	0	1	0
Delaware	8	6	2	1	1
District of Columbia	6	3	1	0	1
Maryland	12	16	14	23	25
New Jersey	1	2	0	0	2
New York	2	1	0	1	5
Ohio	22	32	31	27	30
Pennsylvania	12	7	14	19	9
West Virginia	1,023	1,057	1,258	1,275	1,269
All Other States	35	48	50	89	98
Foreign Countries	15	22	11	5	3
Total	1,136	1,193	1,381	1,441	1,443

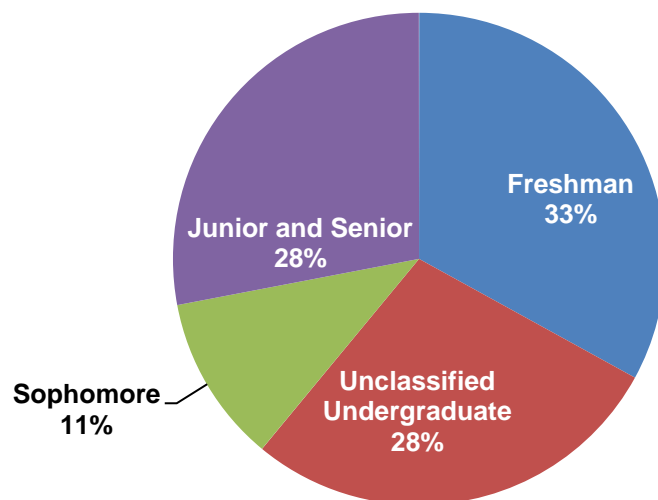
In-State Geographic Distribution Fall 2008



Fall Semester Headcount Enrollment by Class 2001-08

Class	2001	2002	2003	2004	2005	2006	2007	2008	2009
Freshman	755	774	436	446	419	434	446	487	569
Sophomore	337	251	229	287	249	216	182	204	180
Junior and Senior	686	750	571	449	538	510	514	496	484
Unclassified Undergraduate	366	309	141	131	186	221	299	256	488
Total Headcount	2,144	2,184	1,377	1,313	1,392	1,381	1,441	1,443	1,721
FTE Total	1,805	1,789	1,205	1,201	1,277	1,218	1,207	1,262	1,356

Percentage of Enrollment by Class Fall 2009



Data reflects the 2003 mandated separation of the community and technical colleges.

Spring Semester Headcount Enrollment by Class 2000-09

Class	2000	2001	2002	2003	2004	2005	2006	2007	2008	2009
Freshman	907	846	719	716	361	357	393	403	402	471
Sophomore	454	400	372	369	218	225	210	226	207	221
Junior	387	362	322	318	229	183	201	199	181	173
Senior	486	448	447	446	390	377	353	327	353	334
Unclassified	0	0	144	161	104	83	73	96	97	108
Headcount Total	2,234	2,056	2,004	2,010	1,302	1,225	1,230	1,251	1,240	1,307

Summer Headcount Enrollment by Class 2000-09

Class	2000	2001	2002	2003	2004	2005	2006	2007	2008	2009
Freshman	99	77	72	143	45	35	75	32	44	161
Sophomore	54	63	87	94	68	48	44	37	75	72
Junior	69	68	94	80	55	36	54	52	83	60
Senior	129	123	178	203	130	106	116	122	126	115
Unclassified	0	26	51	66	17	16	18	8	95	0
Headcount Total	351	357	482	586	315	241	307	251	423	422
FTE Total	123	140	173	233	120	91	119	90	116	138

Data reflects the 2003 mandated separation of the community and technical colleges.

Headcount Enrollment by Academic Programs

Program	Fall 2001	Fall 2002	Fall 2003	Fall 2004	Fall 2005	Fall 2006	Fall 2007	Fall 2008
Biology (BS)	57	59	49	48	45	44	49	50
Business Administration								
Accounting (BSBA)	42	35	39	34	42	29	39	45
Computer Science/Information Systems (BSBA)	55	49	39	26	28	19	18	18
Business Management (2+2 Program)	7	0	0	3	2	8	1	0
Management (BSBA)	123	138	116	97	101	87	90	87
Marketing (BSBA)	32	37	26	25	26	26	21	21
Sport Management (BA) <i>(discontinued)</i>	26	20	7	1	27	26	54	44
Chemistry (BA)	19	23	13	10	25	19	16	13
Behavioral Sciences								
Behavioral Science (BS)	233	147	89	29	13	3	0	1
Basic & Applied Psychology <i>(discontinued)</i>	1	0	0	43	24	16	5	2
Criminal Justice	6	63	63	84	115	104	109	97
Psychology/Sociology	115	61	42	26	42	67	77	85
Education								
Biological Science (9-adult) (BAED)	5	1	0	2	3	5	5	7
Business Ed Comprehensive (5-adult) (BAED)	11	9	4	4	6	4	5	6
Chemistry (9-adult) (BAED)	4	1	4	3	1	3	3	13
Chemistry & Physics (9-adult) (BAED) <i>(discontinued)</i>	2	0	0	0	2	1	1	0
Early Education (PreK-K) (BAED)	54	55	101	89	72	51	96	85
Elementary Education (BAED)	173	169	17	25	37	63	2	41
English (5-9) (BAED)	3	3	7	6	3	6	12	8
English-Language Arts (5-adult) (BAED)	31	32	32	29	27	18	19	25
General Science (5-9) (BAED)	3	9	10	11	9	5	4	1
General Science (5-adult) (BAED)	8	3	5	4	3	2	1	1
Math (5-9) (BAED)	2	6	9	8	7	4	10	11
Math (5-adult) (BAED)	16	24	22	17	13	12	14	10
Multi-Categorical (Special Ed) (K-adult)	0	18	55	45	34	18	29	29
Multi-Subjects (K-8) (BAED) <i>(discontinued)</i>	15	169	0	0	0	13	0	0

Headcount Enrollment by Academic Programs (continued)

Program	Fall 2001	Fall 2002	Fall 2003	Fall 2004	Fall 2005	Fall 2006	Fall 2007	Fall 2008
Education (continued)								
Music (non-specified) (BAED)	42	48	48	43	49	46	42	45
Physical Education (non-specified) (BAED)	44	59	66	73	64	60	56	54
Social Studies (5-adult) (BAED)	45	45	41	38	42	40	36	33
Social Studies (5-9) (BAED)	14	6	7	10	6	9	12	7
English (BA)	7	9	14	15	24	17	14	19
History (BA)	24	32	29	25	24	17	15	18
Interdisciplinary Studies (BA/BS)	9	15	12	4	3	1	0	1
Natural Resource Management (BS)	0	0	0	64	0	90	104	106
Nursing (BSN)	76	73	61	69	75	55	60	47
Regents Bachelor of Arts (BORBA)	23	25	17	13	12	8	16	9
Undeclared (BA)	92	119	82	74	50	59	35	61
Associate Degrees								
Criminal Justice (AS)	34	31	15	8	7	12	7	9
General Business (AA)	12	3	22	26	21	15	16	27
Forest Technology (AS)	97	80	65	48	42	29	18	13
General Studies (AA)	434	288	77	95	40	20	16	21
Land Surveying (AS)	27	24	23	23	16	12	12	14
Non-Degree Seeking	0	0	0	0	75	238	286	263
Total Headcount	2,131	2,178	1,377	1,313	1,392	1,381	1,441	1,443

Data reflects the 2003 mandated separation of the community and technical colleges.

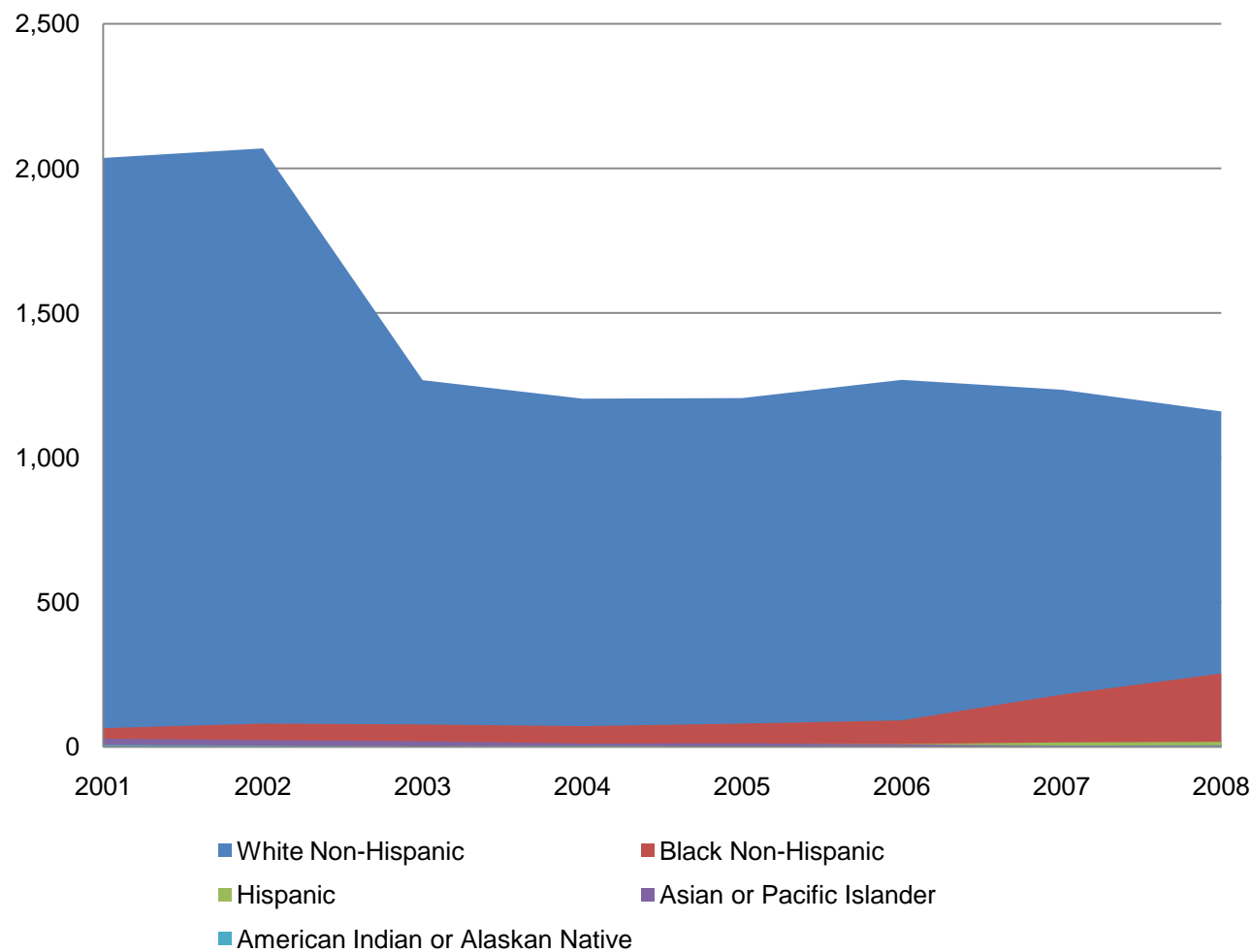
Undergraduate Students: Ethnicity

Term	White Non-Hispanic	Black Non-Hispanic	Hispanic	Asian or Pacific Islander	American Indian or Alaskan Native	Non-Resident Aliens	Total	% Minority
Fall 2001	2,036	65	7	29	7	0	2,144	5.03%
Fall 2002	2,069	81	5	24	5	0	2,184	5.27%
Fall 2003	1,268	78	9	20	2	0	1,377	7.92%
Fall 2004	1,204	72	4	12	4	0	1,296	7.01%
Fall 2005	1,206	81	11	13	1	0	1,392	7.61%
Fall 2006	1,269	92	10	9	1	0	1,381	8.11%
Fall 2007	1,235	181	16	5	4	0	1,441	14.29%
Fall 2008	1,160	254	18	6	5	0	1,443	19.61%

Data reflects the 2003 mandated separation of the community and technical colleges.

Enrollment by Ethnicity

Fall 2001 - Fall 2008

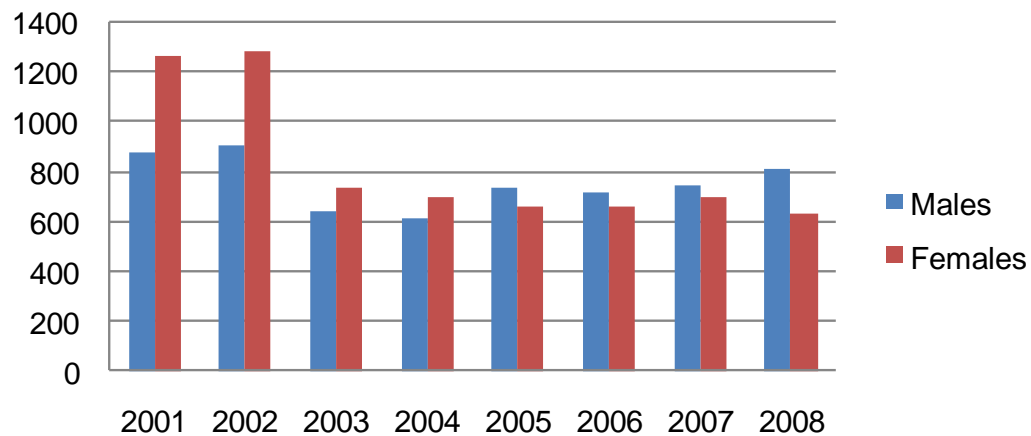


Data reflects the 2003 mandated separation of the community and technical colleges.

Undergraduate Enrollment: Gender

Term	Undergraduate Enrollment	Males	Females	Percentage Male	Percentage Female
Fall 2001	2,143	880	1,263	41%	59%
Fall 2002	2,184	902	1,282	41%	59%
Fall 2003	1,377	638	739	46%	54%
Fall 2004	1,313	614	699	47%	53%
Fall 2005	1,392	730	662	52%	48%
Fall 2006	1,381	719	662	52%	48%
Fall 2007	1,441	742	699	51%	49%
Fall 2008	1,443	813	630	56%	44%

Enrollment by Gender Fall 2001 - Fall 2008



Data reflects the 2003 mandated separation of the community and technical colleges.

Student/Faculty Ratios

Term	FTE Students	FTE Faculty	FTE Student/Faculty Ratio
Fall 1998	1,902	96	20:1
Fall 1999	1,898	101	20:1
Fall 2000	1,846	101	19:1
Fall 2001	1,806	103	18:1
Fall 2002	1,789	89	20:1
Fall 2003	1,205	62	19:1
Fall 2004	1,201	58	21:1
Fall 2005	1,277	61	21:1
Fall 2006	1,218	59	21:1
Fall 2007	1,207	67	18:1
Fall 2008	1,262	70	17:1

Data reflects the 2003 mandated separation of the community and technical colleges.



Graduation & Retention

Fact Book 2009-10

Degrees Conferred 1999-2000 to 2008-09

Degree Type	1999-2000	2000-01	2001-02	2002-03	2003-04	2004-05	2005-06	2006-07	2007-08	2008-09
Associate Degree	97	112	82	90	91	50	31	32	30	31
Baccalaureate Degree	213	182	206	208	206	182	200	182	188	179
Total	310	294	288	298	297	232	231	214	218	210

First-Time, Full-Time Students First to Second-Year Retention

	Fall 2001 to Fall 2002	Fall 2002 to Fall 2003	Fall 2003 to Fall 2004	Fall 2004 to Fall 2005	Fall 2005 to Fall 2006	Fall 2006 to Fall 2007	Fall 2007 to Fall 2008
Glenville State College	60.1%	48.5%	61.0%	63.0%	60.0%	51.0%	58.0%
Statewide	67.4%	NA	77.3%	77.5%	78.0%	77.8%	NA

Data reflects the 2003 mandated separation of the community and technical colleges.

Six Year Graduation

	First-Time, Full-Time Students (Entering Year)								
	1994	1995*	1996*	1997**	1998**	1999**	2000**	2001**	2002**
Glenville State College	33%	32%	27%	26%	29%	31%	30%	32%	31%***
WV State College System Avg.	39%	42%	42%	43%	41%	44%	44%	45%	32%

Six Year Graduation Rates

Entering Year	Students Receiving Athletic-Related Financial Aid (Entering Year)			
	First-Time Full-Time Freshmen	Certificate or Associates Received	Bachelors Received	Percentage
Fall 1994	20	0	10	50.0%
Fall 1995	23	0	10	43.5%
Fall 1996	19	0	7	36.8%
Fall 1997	17	1	5	35.3%
Fall 1998	51	0	23	45.1%
Fall 1999	51	0	18	35.3%
Fall 2000	43	0	18	41.9%
Fall 2001	45	0	18	40.0%
Fall 2002	41	0	19	46.3%

*Data from Higher Education Report Cards published by the WVHEPC.

**Data from Graduation Reports published by the WVHEPC.

***Data adjusted to reflect the 2003 mandated separation of the community and technical colleges.

Graduation by Academic Programs

Program	2001-02	2002-03	2003-04	2004-05	2005-06	2006-07	2007-08	2008-09
Biology (BS)	9	5	5	6	7	5	3	8
Business Administration (BSBA)								
Accounting (BSBA)	6	6	8	6	7	5	3	16
General Business (BSBA)	0	1	0	0	2	1	0	0
Computer and Information Systems (BSBA)	5	6	5	7	6	3	1	2
Management (BSBA)	26	32	24	15	16	18	5	13
Marketing (BSBA)	5	8	7	6	5	7	4	1
Sport Management (BA) (<i>discontinued</i>)	5	10	7	2	0	3	0	3
Chemistry (BA)	2	4	4	6	3	6	5	5
Behavioral Science (BS)	0	0	42	19	10	2	6	1
Psychology/Sociology	42	29	2	8	18	9	4	19
Criminal Justice	11	14	2	5	17	10	9	17
Basic & Applied Psychology (<i>discontinued</i>)	2	1	0	0	0	7	1	3
Education								
Behavioral Disorders (K-12) (BAED)	1	5	0	0	0	0	1	0
Business Ed Comprehensive (5-12) (BAED)	0	1	2	1	1	0	1	0
Chemistry (9-12) (BAED)	0	0	0	1	0	2	1	0
Early Education (PreK-K) (BAED)	19	14	9	15	17	11	14	10
Elementary Education (BAED)	0	0	3	0	1	3	11	0
English (5-12) (BAED)	8	6	7	6	0	6	1	5
English (5-9) (BAED)	0	1	0	1	7	1	0	4
General Science (5-12) (BAED)	1	0	1	0	1	0	0	0
General Science (5-9) (BAED)	3	1	3	3	3	1	1	1
Math (5-12) (BAED)	3	1	1	4	5	0	0	2
Math (5-9) (BAED)	2	2	2	2	3	1	0	2
Multi-Categorical (K-12) (BAED)	0	0	7	7	8	8	6	6
Multi-Subjects (K-8) (BAED) (<i>discontinued</i>)	23	19	31	0	0	0	2	0
Music (non-specified) (BAED)	3	0	9	3	9	6	8	2
Physical Education (non-specified) (BAED)	2	0	3	4	4	3	5	6
Social Studies (5-12) (BAED)	6	5	3	3	6	9	2	4
Social Studies (5-9) (BAED)	12	1	1	2	4	0	0	0
Specific Learning Disabilities (K-12) (BAED)	1	2	0	0	0	0	0	0

Graduation by Academic Programs (continued)

Program	2001-02	2002-03	2003-04	2004-05	2005-06	2006-07	2007-08	2008-09
English (BA)	1	0	5	7	6	8	0	1
History (BA)	4	8	13	8	5	8	2	7
Interdisciplinary Studies (BA/BS)	7	5	5	2	3	0	0	1
Music	0	0	0	0	0	0	0	1
Natural Resource Management (BS)	0	0	0	6	11	11	21	28
Nursing (BSN)	7	10	4	9	10	13	0	0
Regents Bachelor of Arts (BORBA)	22	20	21	18	18	16	8	16
Associate Degrees								
Administrative Science (AA)	0	0	10	5	4	0	2	0
General Business	2	3	4	7	2	3	2	12
Criminal Justice (AS)	4	7	8	1	0	2	2	1
Environmental Technology (AS)	2	7	2	4	3	1	0	0
Forest Technology (AS)	18	10	14	18	13	12	10	12
General Studies (AA/AS)	25	24	15	3	7	5	20	3
Land Surveying (AS)	2	6	3	8	4	9	2	7
Paralegal Technology (AS)	5	7	4	7	9	0	1	0
Total	297	284	296	235	255	215	164	219



Students

Fact Book 2009-10

Student Profile

Fall 1999 – Fall 2008

	Fall 1999		Fall 2000		Fall 2001		Fall 2002		Fall 2003		Fall 2004		Fall 2005		Fall 2006		Fall 2007		Fall 2008	
	Number	Percent	Number	Percent	Number	Percent	Number	Percent	Number	Percent	Number	Percent	Number	Percent	Number	Percent	Number	Percent	Number	Percent
Students Total	2260	100%	2198	100%	2143	100%	2184	100%	1377	100%	1313	100%	1392	100%	1381	100%	1441	100%	1443	100
Gender																				
Male	948	42%	908	41%	880	41%	902	41%	638	46%	614	47%	730	52%	719	52%	742	51%	813	56%
Female	1312	58%	1290	59%	1263	59%	1282	59%	739	54%	699	53%	662	48%	662	48%	699	49%	630	44%
Residence																				
WV Resident	2107	93%	2037	93%	2011	94%	2029	93%	1226	89%	1197	91%	1255	90%	1260	91%	1268	88%	1272	88%
Non-Resident	153	7%	161	7%	132	6%	155	7%	151	11%	116	9%	137	10%	121	9%	173	12%	171	12%
Attendance Status																				
Full-Time	1697	75%	1684	77%	1650	77%	1653	76%	1208	88%	1136	87%	1128	81%	1095	79%	1078	75%	1123	78%
Part-Time	563	25%	514	23%	494	23%	531	24%	169	12%	177	13%	264	19%	286	21%	363	25%	320	22%
Ethnicity																				
White	2147	95%	2074	94%	2036	95%	2069	95%	1268	92%	1204	92%	1206	87%	1268	92%	1235	85%	1160	80%
African-Amer.	61	3%	56	3%	65	3%	81	4%	78	6%	72	5%	81	6%	93	7%	181	13%	254	18%
Other*	52	2%	68	3%	43	2%	34	1%	31	2%	37	3%	105	7%	20	1%	25	2%	29	2%
Age**																				
Under 25	1612	71%	1581	72%	1577	74%	1603	73%	1043	76%	1074	82%	1110	80%	1122	81%	1142	79%	1101	76%
25-29	229	10%	0	0	180	8%	179	8%	159	12%	105	8%	127	9%	114	8%	126	9%	130	9%
30-39	226	10%	0	0	201	9%	216	10%	98	7%	74	6%	92	7%	86	6%	108	7%	144	10%
40+	193	9%	617	28%	185	9%	186	9%	77	6%	60	4%	63	4%	59	5%	65	5%	68	5%

Data reflects the 2003 mandated separation of the community and technical colleges.

*Includes international.

**Excludes age unknown.

Average Age of Students

Fall 2001 - Fall 2008	
Term	Age
Fall 2001	24.3
Fall 2002	23.0
Fall 2003	22.9
Fall 2004	22.9
Fall 2005	21.9
Fall 2006	22.9
Fall 2007	22.8
Fall 2008	22.9

Grade Point Averages 2001-02 through 2008-09

	2001-02		2002-03		2003-04		2004-05		2005-06		2006-07		2007-08		2008-09	
	Fall	Spring	Fall	Spring	Fall	Spring	Fall	Spring	Fall	Spring	Fall	Spring	Fall	Spring	Fall	Spring
All Classes	2.59	2.58	2.64	2.72	2.68	2.60	2.62	2.67	2.62	2.72	2.43	2.77	2.28	2.75	2.47	2.66
Freshmen	2.44	2.45	2.42	2.14	2.29	2.26	2.39	2.04	2.16	1.94	2.31	2.60	2.13	2.54	2.11	2.09

Student Enrollment by County - Number of Students

County	1999	2000	2001	2002	2003	2004	2005	2006	2007	2008
Barbour	4	4	6	8	11	11	10	5	9	9
Berkeley	10	5	4	5	6	6	9	5	10	13
Boone	9	9	7	7	7	5	3	2	2	3
Braxton	255	248	241	236	165	134	139	186	162	147
Brooke	0	0	0	1	1	1	1	2	1	1
Cabell	3	5	5	8	5	2	8	9	7	6
Calhoun	102	115	140	148	115	122	124	100	102	85
Clay	31	34	37	45	34	52	37	34	33	32
Doddridge	19	23	16	16	6	9	7	11	11	12
Fayette	79	93	76	80	34	33	33	19	14	17
Gilmer	262	246	223	215	224	208	300	323	331	393
Grant	0	1	3	1	0	0	0	3	5	4
Greenbrier	18	24	20	23	12	9	7	8	10	7
Hampshire	0	1	1	1	3	1	1	1	2	2
Hancock	1	1	0	1	2	9	7	7	6	5
Hardy	4	3	2	3	4	5	6	5	5	6
Harrison	31	31	33	26	20	21	28	22	27	29
Jackson	15	16	13	13	19	20	22	20	23	17
Jefferson	3	2	3	4	4	3	4	3	1	2
Kanawha	32	18	18	25	26	27	26	40	40	39
Lewis	259	220	252	237	127	92	75	74	60	62
Lincoln	0	1	0	0	0	1	3	3	2	1
Logan	4	5	1	0	1	1	0	3	3	3
Marion	3	4	9	12	8	9	10	5	3	4
Marshall	1	2	2	4	0	4	4	3	2	1
Mason	9	6	7	7	8	8	8	7	4	2
McDowell	2	2	1	0	0	1	0	0	1	0
Mercer	2	1	3	2	2	3	1	1	5	1

Student Enrollment by County - Number of Students (continued)

County	1999	2000	2001	2002	2003	2004	2005	2006	2007	2008
Mineral	1	2	2	2	2	2	2	5	7	9
Mingo	3	2	3	4	4	2	4	1	3	3
Monongalia	1	1	7	3	3	4	2	2	3	3
Monroe	0	1	1	0	2	2	1	1	2	1
Morgan	1	2	0	0	1	0	0	0	0	0
Nicholas	452	415	441	421	96	74	70	72	50	56
Ohio	1	2	2	2	0	1	0	0	1	1
Pendleton	1	0	1	5	5	7	14	12	10	10
Pleasants	13	10	3	2	4	6	3	4	9	6
Pocahontas	15	24	10	9	11	7	7	5	7	7
Preston	7	7	6	8	11	8	5	4	1	2
Putnam	13	9	4	3	8	14	11	8	12	9
Raleigh	21	14	10	15	13	17	11	12	42	13
Randolph	36	39	30	26	18	17	20	24	35	31
Ritchie	41	30	33	20	25	48	41	36	58	48
Roane	60	49	29	28	20	28	27	33	43	56
Summers	3	3	2	1	2	0	2	3	5	4
Taylor	2	2	1	2	2	1	1	1	1	2
Tucker	7	10	8	5	4	7	4	4	4	4
Tyler	9	8	4	4	4	4	3	2	4	4
Upshur	93	116	125	132	49	52	48	37	23	28
Wayne	2	1	2	0	0	0	0	0	1	0
Webster	121	121	104	153	52	40	38	29	23	24
Wetzel	1	4	4	7	5	5	11	5	4	1
Wirt	13	12	14	12	11	17	23	25	17	13
Wood	37	44	39	36	33	33	32	25	30	27
Wyoming	4	3	3	1	1	4	2	3	0	4

Student Enrollment by County - Percent of Headcount

County	1999	2000	2001	2002	2003	2004	2005	2006	2007	2008
Barbour	0.17	0.18	0.28	0.37	0.80	0.84	0.79	0.58	0.62	0.62
Berkeley	0.44	0.23	0.19	0.23	0.44	0.46	0.72	0.36	0.69	0.90
Boone	0.39	0.40	0.33	0.32	0.51	0.38	0.24	0.14	0.14	0.21
Braxton	11.30	11.20	11.20	10.81	11.99	10.21	11.08	13.47	11.24	10.19
Brooke	0.00	0.00	0.00	0.05	0.08	0.08	0.08	0.14	0.01	0.07
Cabell	0.13	0.23	0.23	0.37	0.37	0.15	0.64	0.65	0.49	0.42
Calhoun	4.50	5.20	6.50	6.78	8.36	9.29	9.88	7.24	7.08	5.89
Clay	1.40	1.50	1.70	2.06	2.47	3.96	2.95	2.46	2.29	2.22
Doddridge	0.84	1.04	0.75	0.74	0.44	0.69	0.56	0.80	0.76	0.83
Fayette	3.50	4.20	3.50	3.67	2.47	2.51	2.63	1.38	0.97	1.18
Gilmer	11.60	11.10	10.40	9.85	16.27	15.84	23.90	23.39	22.97	27.23
Grant	0.00	0.04	0.14	0.05	0.00	0.00	0.00	0.22	0.34	0.28
Greenbrier	0.79	1.10	0.93	1.06	0.88	0.69	0.56	0.58	0.39	0.49
Hampshire	0.00	0.04	0.05	0.05	0.22	0.08	0.08	0.07	0.14	0.14
Hancock	0.04	0.04	0.00	0.05	0.15	0.69	0.56	0.51	0.42	0.35
Hardy	0.17	0.14	0.09	0.14	0.29	0.38	0.48	0.36	0.35	0.42
Harrison	1.40	1.40	1.50	1.19	1.46	1.60	2.23	1.59	1.87	2.01
Jackson	0.66	0.72	0.61	0.60	1.38	1.52	1.75	1.45	1.60	1.18
Jefferson	0.13	0.09	0.14	0.19	0.29	0.23	0.32	0.22	0.01	0.14
Kanawha	1.40	0.80	0.84	1.15	1.89	2.06	2.07	2.90	2.78	2.70
Lewis	11.50	10.00	11.80	10.86	9.23	7.01	5.97	5.36	4.16	4.30
Lincoln	0.00	0.04	0.00	0.00	0.00	0.08	0.24	0.22	0.14	0.07
Logan	0.17	0.22	0.05	0.00	0.08	0.08	0.00	0.22	0.21	0.21
Marion	0.13	0.18	0.42	0.55	0.58	0.69	0.79	0.36	0.21	0.28
Marshall	0.04	0.09	0.09	0.19	0.00	0.30	0.32	0.22	0.14	0.07
Mason	0.39	0.27	0.33	0.32	0.58	0.61	0.64	0.51	0.28	0.14
McDowell	0.08	0.09	0.05	0.00	0.00	0.08	0.00	0.00	0.01	0.00
Mercer	0.08	0.04	0.14	0.10	0.15	0.23	0.08	0.07	0.35	0.07

Student Enrollment by County - Percent of Headcount (continued)

County	1999	2000	2001	2002	2003	2004	2005	2006	2007	2008
Mineral	0.04	0.09	0.09	0.10	0.15	0.15	0.16	0.36	0.49	0.62
Mingo	0.13	0.09	0.14	0.19	0.29	0.15	0.32	0.07	0.21	0.21
Monongalia	0.04	0.04	0.33	0.14	0.22	0.30	0.16	0.14	0.21	0.21
Monroe	0.00	0.04	0.05	0.00	0.15	0.15	0.08	0.07	0.14	0.07
Morgan	0.04	0.09	0.00	0.00	0.08	0.00	0.00	0.00	0.00	0.00
Nicholas	20.00	18.80	20.60	19.28	6.98	5.64	5.58	5.21	3.47	3.88
Ohio	0.04	0.09	0.09	0.10	0.00	0.08	0.00	0.00	0.01	0.07
Pendleton	0.04	0.00	0.05	0.23	0.37	0.53	1.11	0.87	0.69	0.69
Pleasants	0.57	0.45	0.14	0.10	0.29	0.46	0.24	0.29	0.62	0.42
Pocahontas	0.66	1.09	0.47	0.42	0.80	0.53	0.56	0.36	0.49	0.49
Preston	0.31	0.31	0.28	0.37	0.80	0.61	0.40	0.29	0.01	0.14
Putnam	0.57	0.40	0.19	0.14	0.58	1.07	0.87	0.58	0.83	0.62
Raleigh	0.93	0.63	0.47	0.69	0.95	1.29	0.87	0.87	2.91	0.90
Randolph	1.60	1.80	1.40	1.19	1.31	1.29	1.60	1.74	2.43	2.15
Ritchie	1.80	1.40	1.50	0.92	1.82	3.66	3.27	2.61	4.02	3.33
Roane	2.70	2.20	1.40	1.29	1.46	2.13	2.15	2.39	2.92	3.88
Summers	0.13	0.13	0.09	0.05	0.15	0.00	0.16	0.22	0.35	0.28
Taylor	0.08	0.09	0.05	0.10	0.15	0.08	0.08	0.07	0.01	0.14
Tucker	0.31	0.45	0.37	0.23	0.29	0.53	0.32	0.29	0.28	0.28
Tyler	0.39	0.36	0.19	0.19	0.29	0.30	0.24	0.14	0.28	0.28
Upshur	4.10	5.30	5.80	6.05	3.56	3.96	3.83	2.68	1.60	1.94
Wayne	0.08	0.04	0.09	0.00	0.00	0.00	0.00	0.00	0.01	0.00
Webster	5.40	5.50	4.90	7.01	3.78	3.05	3.03	2.10	1.60	1.66
Wetzel	0.04	0.19	0.19	0.32	0.37	0.38	0.87	0.36	0.28	0.07
Wirt	0.57	0.54	0.65	0.55	0.80	1.29	1.83	1.81	1.18	0.90
Wood	1.60	2.00	1.80	1.65	2.40	2.51	2.55	1.81	2.08	1.87
Wyoming	0.17	0.13	0.14	0.05	0.08	0.30	0.16	0.22	0.00	0.28

Freshman Students Age 25 and Over as a Percentage of Freshman Enrollment

Term	Total Freshmen	Freshmen 25 Years or Older	% of Total Freshmen
Fall 1999	854	206	24%
Fall 2000	829	195	24%
Fall 2001	755	173	23%
Fall 2002	774	192	25%
Fall 2003	436	47	11%
Fall 2004	446	54	12%
Fall 2005	419	27	6%
Fall 2006	434	88	20%
Fall 2007	446	77	17%
Fall 2008	490	90	18%

Data reflects the 2003 mandated separation of the community and technical colleges.

Part-Time Students

Term	Part-Time Enrollment	Part-Time Students 25 Years or Older	Percent of Part-Time Student 25 Years or Older
Fall 2001	576	237	41%
Fall 2002	531	245	46%
Fall 2003	169	92	54%
Fall 2004	177	57	32%
Fall 2005	264	125	47%
Fall 2006	285	111	39%
Fall 2007	363	162	45%
Fall 2008	320	190	59%

Undergraduate Students Age 25 and Over as a Percentage of Undergraduate Enrollment

Term	Undergraduate Enrollment	Undergraduates 25 Years or Older	Percent	State College System Percent
Fall 2001	2144	566	22%	24%
Fall 2002	2184	581	27%	25%
Fall 2003	1377	334	24%	32%
Fall 2004	1313	239	18%	32%
Fall 2005	1329	282	21%	32%
Fall 2006	1381	259	19%	27%
Fall 2007	1441	299	21%	28%
Fall 2008	1443	342	24%	NA

Data reflects the 2003 mandated separation of the community and technical colleges.

Residence Hall Occupancy

Year	Fall Term				Spring Term			
	Actual Head Count	Private Rooms	Occupancy Percentage	Private Room Percentage	Actual Head Count	Private Rooms	Occupancy Percentage	Private Room Percentage
1996-1997	407	180	56.45%	44.23%	322	171	44.66%	53.11%
1997-1998	357	189	49.51%	52.94%	311	214	43.13%	68.81%
1998-1999	433	247	60.06%	57.04%	366	231	50.76%	63.11%
1999-2000	421	227	58.39%	53.92%	372	215	51.60%	57.80%
2000-2001	425	231	58.95%	54.35%	374	249	51.87%	66.58%
2001-2002	404	287	67.79%	71.04%	341	276	57.21%	80.94%
2002-2003	448	325	75.17%	72.54%	408	327	68.46%	80.15%
2003-2004	448	336	75.17%	75.00%	377	285	63.26%	75.60%
2004-2005	443	271	74.32%	61.17%	404	308	67.79%	76.24%
2005-2006	478	316	80.20%	66.10%	412	306	69.12%	74.27%
2006-2007	435	351	73.00%	82.39%	371	286	55.00%	77.09%
2007-2008	452	269	76.00%	60.00%	380	262	64.00%	68.95%
2008-2009	494	302	83.00%	51.00%	444	284	75.00%	63.96%

Maximum Occupancy Through 2001-02 was 721 students.
Maximum Occupancy After 2001-02 is 596 students.



Personnel

Fact Book 2009-10

Average Age of Faculty

Term	Average Age Full Time Faculty	Average Age Part Time Faculty
Fall 2001	47	45
Fall 2002	49	47
Fall 2003	49	45
Fall 2004	45	49
Fall 2005	46	49
Fall 2006	47	50
Fall 2007	48	49
Fall 2008	48	51

Average Nine-Month Base Salary of Full-Time Instructional Faculty*

	Professor		Associate Professor		Assistant Professor		Instructor		Lecturer, Graduate Assistant & Other			
Term	#	Salary	#	Salary	#	Salary	#	Salary	#	Salary	Total	Average Salary
Fall 2001	12	\$61,262	25	\$46,458	23	\$40,221	5	\$31,798	0	\$0	65	\$45,856
Fall 2002	14	\$61,450	20	\$48,901	16	\$41,479	14	\$31,574	0	\$0	64	\$46,000
Fall 2003	12	\$61,404	15	\$50,560	10	\$41,629	12	\$31,329	1	\$25,358	50	\$46,257
Fall 2004	8	\$62,535	13	\$50,343	16	\$40,594	11	\$29,574	0	\$0	48	\$44,366
Fall 2005	8	\$60,332	14	\$51,116	18	\$41,919	12	\$34,410	1	\$31,400	53	\$45,229
Fall 2006	8	\$65,199	15	\$55,038	21	\$43,747	7	\$34,318	0	\$0	51	\$49,139
Fall 2007	9	\$64,054	16	\$55,606	20	\$44,495	10	\$36,754	2	\$31,907	57	\$48,903
Fall 2008	8	\$65,885	16	\$58,216	20	\$46,100	14	\$35,203	2	\$33,243	60	\$48,997

Data reflects the 2003 mandated separation of the community and technical colleges.

**Does not include pay for extra or extended assignments.*

Source: Faculty and Staff Characteristics - Fall 2008, WVHEPC

Full-Time Instructional Faculty by Academic Rank

Term	Professor		Associate Professor		Assistant Professor		Instructor		Lecturer, Graduate Assistant & Other		Total	Average Salary
	#	%	#	%	#	%	#	%	#	%		
Fall 2001	12	19%	25	39%	23	35%	5	8%	0	0%	65	\$45,856
Fall 2002	14	22%	20	31%	16	25%	14	22%	0	0%	64	\$46,000
Fall 2003	12	24%	15	30%	10	20%	12	24%	1	2%	50	\$46,257
Fall 2004	8	17%	13	27%	16	33%	11	23%	0	0%	48	\$44,366
Fall 2005	8	15%	14	27%	16	31%	14	27%	0	2%	52	\$45,229
Fall 2006	8	16%	15	29%	21	41%	7	14%	0	0%	51	\$49,139
Fall 2007	9	16%	16	28%	20	35%	10	18%	2	4%	57	\$48,903
Fall 2008	9	15%	16	27%	20	33%	14	23%	2	3%	60	\$48,997

Tenure of Full-Time Instructional Faculty

Term	Professor			Associate Professor			Assistant Professor			Instructor			Lecturer, Graduate Assistant & Other			Total		
	#	Tenured	%	#	Tenured	%	#	Tenured	%	#	Tenured	%	#	Tenured	%	#	Tenured	%
Fall 2001	12	11	92%	25	15	60%	23	7	30%	5	0	0%	0	0	0%	65	33	51%
Fall 2002	14	11	79%	20	13	65%	16	6	38%	14	1	7%	0	0	0%	64	31	48%
Fall 2003	12	11	92%	15	11	73%	10	4	40%	12	1	8%	1	0	0%	50	27	54%
Fall 2004	8	8	100%	13	11	85%	16	2	13%	11	0	0%	0	0	0%	48	21	44%
Fall 2005	8	8	100%	14	10	71%	16	2	13%	14	0	0%	0	0	0%	52	20	38%
Fall 2006	8	8	100%	15	11	73%	21	2	10%	7	0	0%	0	0	0%	51	21	41%
Fall 2007	9	9	100%	16	10	63%	20	2	10%	10	0	0%	2	0	0%	57	21	37%
Fall 2008	8	8	100%	16	10	63%	20	2	10%	14	0	0%	2	0	0%	60	20	33%

Source: Faculty and Staff Characteristics – Fall 2008, WVHEPC.

Full-Time Instructional Faculty by Ethnicity

	White, Non-Hispanic		Black, Non-Hispanic		Hispanic		Asian or Pacific Islander		American Indian or Alaskan Native			
Term	#	%	#	%	#	%	#	%	#	%	Total	% Minority
Fall 2001	64	97.0%	0	0.0%	0	0.0%	1	2.0%	0	0.0%	65	2.0%
Fall 2002	64	100.0%	0	0.0%	0	0.0%	0	0.0%	0	0.0%	64	0.0%
Fall 2003	49	98.0%	1	2.0%	0	0.0%	0	0.0%	0	0.0%	50	2.0%
Fall 2004	47	97.9%	1	2.1%	0	0.0%	0	0.0%	0	0.0%	48	2.1%
Fall 2005	50	96.2%	0	0.0%	0	0.0%	2	3.8%	0	0.0%	52	3.8%
Fall 2006	50	98.0%	0	0.0%	0	0.0%	1	2.0%	0	0.0%	51	2.0%
Fall 2007	55	96.5%	0	0.0%	0	0.0%	2	3.5%	0	0.0%	57	3.5%
Fall 2008	57	95.0%	0	0.0%	1	1.7%	2	3.3%	0	0.0%	60	5.0%

Full-Time Instructional Faculty by Gender

	Male		Female		
Term	Number	Percentage	Number	Percentage	Total Number
Fall 2001	40	62%	25	39%	65
Fall 2002	40	63%	24	38%	64
Fall 2003	33	66%	17	34%	50
Fall 2004	30	63%	18	38%	48
Fall 2005	31	60%	21	40%	52
Fall 2006	29	57%	22	43%	51
Fall 2007	36	63%	21	37%	57
Fall 2008	36	60%	24	40%	60

Source: Faculty and Staff Characteristics – Fall 2008, WVHEPC.

Highest Degree Held by Full-Time Instructional Faculty

Term	Doctoral		Masters		First Professional		Bachelors		Other		Total
	#	%	#	%	#	%	#	%	#	%	
Fall 2001	17	26%	44	68%	1	2%	3	5%	0	0%	65
Fall 2002	15	23%	44	69%	1	2%	4	6%	0	0%	64
Fall 2003	12	24%	33	66%	0	0%	5	10%	0	0%	50
Fall 2004	19	40%	25	52%	0	0%	4	8%	0	0%	48
Fall 2005	24	46%	25	48%	0	0%	3	6%	0	0%	52
Fall 2006	29	57%	20	39%	0	0%	2	4%	0	0%	51
Fall 2007	32	56%	24	42%	0	0%	1	2%	0	0%	57
Fall 2008	31	52%	28	47%	0	0%	1	2%	0	0%	60

Highest Degree Held by Part-Time Instructional Faculty

Term	Doctoral		Masters		First Professional		Bachelors		Other		Total
	#	%	#	%	#	%	#	%	#	%	
Fall 2001	3	3%	65	66%	6	6%	22	22%	2	2%	98
Fall 2002	6	5%	80	61%	8	6%	34	26%	2	2%	130
Fall 2003	2	6%	16	46%	3	9%	14	40%	0	0%	35
Fall 2004	1	4%	20	71%	3	11%	4	14%	0	0%	28
Fall 2005	3	10%	21	70%	2	7%	4	13%	0	0%	30
Fall 2006	1	4%	19	76%	1	4%	4	16%	0	0%	25
Fall 2007	4	15%	18	67%	1	4%	3	11%	0	0%	26
Fall 2008	4	17%	14	58%	2	8%	4	17%	0	0%	24

Source: Faculty and Staff Characteristics – Fall 2008, WVHEPC.

Full-Time Classified and Non-Classified Staff

Term	Classified Staff					Non-Classified Staff				
	# Males	% Males	# Females	% Females	Total	# Males	% Males	# Females	% Females	Total
Fall 1999	47	43%	52	57%	92	11	65%	6	35%	17
Fall 2000	38	41%	55	59%	93	12	60%	8	40%	20
Fall 2001	37	40%	55	60%	92	9	50%	9	50%	18
Fall 2002	27	36%	48	64%	75	23	58%	17	43%	40
Fall 2003	22	37%	37	63%	59	14	56%	11	44%	25
Fall 2004	26	38%	43	62%	69	9	53%	8	47%	17
Fall 2005	24	35%	44	65%	68	12	57%	9	43%	21
Fall 2006	34	45%	42	55%	76	14	67%	7	33%	21
Fall 2007	33	45%	41	55%	74	22	69%	10	31%	32
Fall 2008	37	47%	41	53%	78	25	68%	12	32%	37

Source: Faculty and Staff Characteristics – Fall 2008, WVHEPC.



Financial

Fact Book 2009-10

Educational and General (E&G) Expenditures

	2002-03	2003-04	2004-05	2005-06	2006-07	2007-08
Instruction	\$5,249,000	\$3,951,000	\$3,861,000	\$3,830,000	\$4,731,000	\$5,739,000
Academic Support	\$1,168,000	\$885,000	\$928,000	\$784,000	\$789,000	\$771,000
Student Services	\$1,541,000	\$1,246,000	\$1,184,000	\$1,507,000	\$1,524,000	\$1,556,000
Operation and Maintenance of Plant	\$1,873,000	\$1,475,000	\$1,489,000	\$1,859,000	\$1,543,000	\$2,148,000
General Institutional Support	\$2,922,000	\$1,596,000	\$1,783,000	\$1,398,000	\$1,387,000	\$1,941,000
Scholarships and Aid	\$10,371,000*	\$8,513,000*	\$8,762,000*	\$9,644,000*	\$8,988,000*	\$9,956,000*
Total E & G	\$18,306,000	\$13,684,000	\$14,050,000	\$14,536,000	\$14,919,000	\$15,843,000
Auxiliary Enterprises	\$2,925,000	\$3,128,000	\$2,787,000	\$3,345,000	\$3,189,000	\$3,899,000
Total Expenditures	\$26,049,000	\$20,794,000	\$20,794,000	\$22,367,000	\$22,151,000	\$24,327,000

Data reflects the 2003 mandated separation of the community and technical colleges.

*Includes Federal Direct Loans.

Revenues

	2002-03	2003-04	2004-05	2005-06	2006-07	2007-08
Tuition and fees	\$5,152,000	\$4,056,000	\$3,991,000	\$4,505,000	\$4,542,000	\$5,258,000
Government appropriations	\$8,360,000	\$5,266,000	\$5,506,000	\$5,413,000	\$5,476,000	\$6,096,000
Government contracts and grants	\$5,312,000	\$4,488,000	\$5,431,000	\$9,159,000	\$7,102,000	\$5,508,000
Private gifts, grants, and contracts	\$996,000	\$757,000	\$755,000	\$1,189,000	\$1,023,000	\$952,000
Income from investments	\$122,000	\$40,000	\$97,000	\$259,000	\$249,000	\$260,000
Sales and services of auxiliary enterprises	\$2,745,000	\$3,155,000	\$3,322,000	\$3,602,000	\$3,353,000	\$3,810,000
Sales and services of educational activities	\$1,391,000	\$1,282,000	\$513,000	\$558,000	\$427,000	\$829,000
Other sources	\$7,000	\$0	\$600,000	\$142,000	\$128,000	\$296,000
Total revenues	\$24,085,000	\$19,044,000	\$20,215,000	\$24,827,000	\$22,300,000	\$23,009,000

Semester Tuition and Fees 1998-2009

	1998-99	1999-00	2000-01	2001-02	2002-03	2003-04	2004-05	2005-06	2006-07	2007-08	2008-09	2009-10
Resident	\$1,008	\$1,104	\$1,188	\$1,244	\$1,350	\$1,476	\$1,638	\$1,814	\$1,941	\$2,087	\$2,243	\$2,444
Non-Resident	\$2,394	\$2,604	\$2,832	\$3,060	\$3,240	\$3,653	\$3,927	\$4,320	\$4,647	\$4,995	\$5,369	\$5,851
Metro Rate	NA	NA	NA	NA	NA	NA	NA	NA	NA	NA	\$3,700	\$4,032

Student Scholarships, Grants, Loans – Summary

Fund	2001-02	2002-03	2003-04	2004-05	2005-06	2006-07	2007-08	2008-09
Pell Grant	\$2,894,170	\$3,282,206	\$2,225,996	\$2,199,696	\$2,085,336	1,888,807	2,058,087	2,347,617
SEOG	120,772	112,656	112,202	111,106	115,753	178,182	175,798	184,737
WV Grant	870,333	796,528	689,510	666,935	773,497	1,003,477	1,077,728	1,062,880
HEAPS	38,524	63,393	86,301	24,967	32,989	58,784	88,285	119,592
Promise Scholarship	0	165,662	260,333	442,260	535,130	477,486	515,489	509,161
Perkins Loan	213,450	0	0	0	0	0	0	0
Direct Subsidized Loan	2,620,056	3,078,186	2,482,122	2,392,623	2,483,665	2,370,229	2,725,462	2,833,960
Direct Unsubsidized Loan	1,065,985	1,341,439	1,035,178	1,160,455	1,415,561	1,303,153	1,479,978	2,867,666
Direct Parent Loan	176,061	380,203	461,882	406,897	446,111	377,250	304,553	291,251
Alternative Loans	16,419	18,535	48,132	101,289	216,397	393,358	230,937	254,661
Phala Woods Loan	0	21,875	15,900	11,500	19,500	17,750	19,000	137,397
College Work Study	163,411	161,726	146,832	144,292	125,082	136,860	126,081	141,328
Work Ship	283,738	313,564	232,178	26,200	287,192	285,233	356,941	450,000
Academic Tuition Waivers	63,865	61,003	44,028	29,100	26,200	25,125	17,875	25,212
Athletic Tuition Waivers	105,390	125,457	112,608	82,944	73,412	84,437	81,438	112,606
Fine Arts Tuition Waivers	20,502	15,403	16,549	17,338	15,100	18,375	19,000	22,250
Other Tuition Waivers	10,251	7,120	7,552	8,700	19,187	40,125	175,875	44,162
Academic Pioneer Scholarship	33,935	21,865	18,037	52,350	28,600	10,700	9,000	3,350
Athletic Pioneer Scholarship	82,268	66,457	45,275	79,206	71,050	45,900	77,200	111,500
Fine Arts Pioneer Scholarship	17,985	19,335	17,975	23,875	5,219	11,450	7,400	900
Foundation Scholarships	181,993	187,703	200,833	157,891	187,757	226,464	255,111	302,879
Shaw Scholarships	10,250	9,200	9,589	7,800	4,700	3,300	4,973	4,700
Athletic Scholarships	106,570	139,065	154,014	197,811	271,564	255,818	351,041	429,296
Eng./Sci. Tech Scholarship	0	2,621	5,904	6,000	0	3,000	0	0
Underwood/Smith Scholarship	15,000	32,562	2,500	7,500	20,000	13,398	10,000	10,000
DC Tuition Assistance	45,400	27,848	25,217	24,806	12,530	6,912	17,005	48,792
PA Higher Ed Grant	1,200	1,800	3,540	4,800	1,800	1,800	5,800	1,841

Student Scholarships, Grants, Loans – Summary (continued)

Fund	2001-02	2002-03	2003-04	2004-05	2005-06	2006-07	2007-08	2008-09
Third Party Tuition Waivers	100,669	97,374	40,428	56,684	53,533	119,222	0	107,500
Misc. Outside Scholarship	129,112	162,053	174,862	240,527	224,861	265,644	216,184	206,817
Americorp	10,962	24,620	33,146	13,011	12,075	13,651	9,288	20,000
Workers Compensation	20,261	17,599	3,556	7,162	608	5,046	0	0
Vocational Rehab	60,674	57,498	42,274	57,830	52,871	52,895	49,125	64,193
WFIA/JTPA	18,849	21,106	14,607	7,852	6,274	86	0	0
UMWA	5,078	2,017	557	3,254	399	0	0	2,124
TRA	7,533	20,527	13,360	4,894	3,959	8,419	6,841	0
Child Development Scholarship	7,353	10,364	478	0		0	0	0
VA Rehab	15,320	19,573	15,332	25,479	19,050	12,694	22,123	25,359
National Guard	85,906	68,221	29,846	21,370	44,520	46,074	57,579	60,971
Veterans Benefits	204,961	186,018	164,178	214,631	216,800	218,608	190,508	190,000
Veterans War Orphan TW	0	0	4,428	3,276	1,874	3,957	0	4,666
Total	\$9,824,206	\$11,140,382	\$8,997,239	\$9,260,530	\$9,910,156	\$8,094,882	\$10,741,705	\$12,999,367



Miscellaneous

Fact Book 2009-10

West Virginia In-State College Going Rates (by Hidden Promise Consortium)

Hidden Promise County	2002	2003	2004	2005	2006	2007	2008
Barbour	52.17%	58.78%	57.90%	54.50%	51.50%	55.60%	54.50%
Braxton	43.92%	54.67%	51.70%	52.30%	53.90%	46.80%	50.40%
Calhoun	45.10%	54.55%	43.50%	52.20%	40.80%	36.60%	46.10%
Clay	45.97%	45.30%	45.10%	43.80%	49.10%	37.40%	40.20%
Doddridge	51.49%	60.00%	73.60%	50.60%	45.60%	45.20%	47.80%
Gilmer	53.52%	53.16%	54.90%	53.90%	57.30%	52.00%	53.20%
Lewis	54.36%	79.53%	66.10%	55.40%	50.00%	54.30%	58.00%
Nicholas	48.56%	51.51%	49.00%	52.90%	49.20%	49.60%	48.00%
Pleasants	53.26%	62.10%	61.70%	61.60%	56.00%	56.30%	48.40%
Pocahontas	45.74%	59.80%	55.10%	54.40%	59.80%	45.80%	56.20%
Randolph	59.59%	52.56%	65.10%	54.80%	60.20%	58.70%	49.30%
Ritchie	55.75%	59.63%	59.40%	64.30%	64.00%	68.30%	47.80%
Roane	40.23%	44.16%	50.30%	38.70%	56.40%	48.40%	46.10%
Upshur	61.29%	72.05%	71.30%	54.20%	57.10%	54.30%	55.10%
Webster	40.87%	40.17%	50.00%	42.70%	38.30%	40.60%	44.90%
Wirt	50.00%	56.04%	52.40%	71.70%	59.40%	56.70%	54.70%
Wyoming	39.35%	47.30%	45.10%	50.40%	46.30%	48.20%	49.20%
Average	49.48%	55.96%	56.01%	53.44%	52.64%	50.28%	49.99%

Source: West Virginia College Going Rates by County and High School – Fall 2008, WVHEPC.

Hidden Promise Consortium Data

Hidden Promise County	County Population*	Student Enrollment 2007-2008*	Number of High School Graduates 2007-2008*	ACT		College Going Rate Fall 2008**	Students Enrolled at GSC Fall 2008
				% Test Takers*	Composite Score*		
Barbour	1,557	2,552	176	56.2%	20.5	54.5%	9
Braxton	14,702	2,291	138	63.7%	20.7	50.4%	147
Calhoun	7,582	1,151	76	48.6%	19.9	46.1%	85
Clay	10,330	2,037	130	47.6%	19.7	40.2%	32
Doddridge	7,403	1,234	91	57.1%	20.7	47.8%	12
Gilmer	7,160	942	62	59.6%	21.4	53.2%	393
Lewis	16,919	2,704	156	55.7%	20.4	58.0%	62
Nicholas	26,562	4,114	291	59.4%	19.7	48.0%	56
Pleasants	7,514	1,352	90	56.6%	21.4	48.4%	6
Pocahontas	9,131	1,205	89	70.7%	20.2	56.2%	31
Randolph	28,262	4,414	265	62.6%	20.5	49.3%	31
Ritchie	10,343	1,597	115	64.3%	19.8	47.8%	48
Roane	15,446	2,574	167	47.3%	19.3	46.1%	56
Upshur	23,404	3,881	246	62.6%	21.3	55.1%	28
Webster	9,719	1,615	118	60.1%	19.5	44.9%	24
Wirt	5,873	997	53	62.2%	19.3	54.7%	13
Wyoming	25,708	4,142	255	55.2%	20.0	49.2%	4
Total Service Area	227,615	38,802	2,518	58.2%	20.3	50.0%	1,037
West Virginia	1,814,468	281,715	18,222	59.80%	20.7	58.8%	1,269

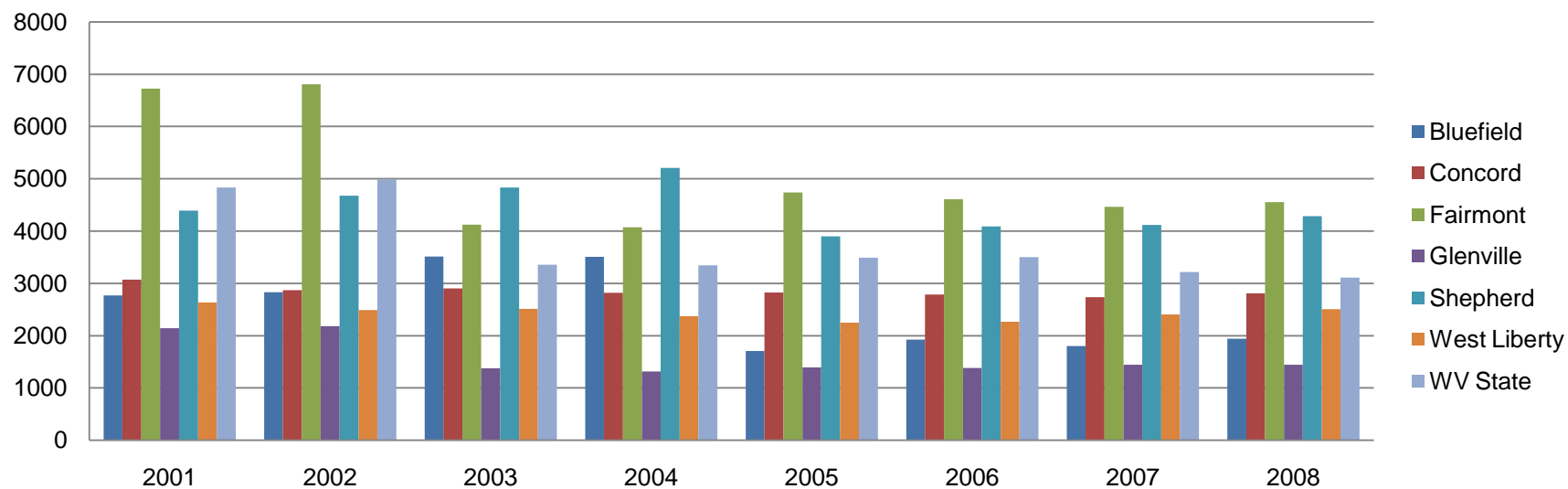
Source: West Virginia 2007-2008 Report Card, WVDE

Source: West Virginia College Going Rates by County and High School – Fall 2008, WVHEPC.

Fall Enrollment Comparison

Institution Name	Fall 2001	Fall 2002	Fall 2003	Fall 2004	Fall 2005	Fall 2006	Fall 2007	Fall 2008
Bluefield State College	2768	2832	3511	3506	1708	1923	1804	1943
Concord University	3072	2871	2901	2820	2826	2787	2735	2810
Fairmont State University	6724	6806	4121	4071	4740	4611	4464	4554
Glenville State College	2144	2184	1377	1313	1392	1381	1441	1443
Shepherd University	4391	4676	4831	5206	3901	4091	4119	4283
West Liberty State College	2633	2491	2511	2374	2248	2268	2405	2508
West Virginia State University	4836	4992	3357	3344	3491	3502	3218	3110

Fall Enrollment Comparison

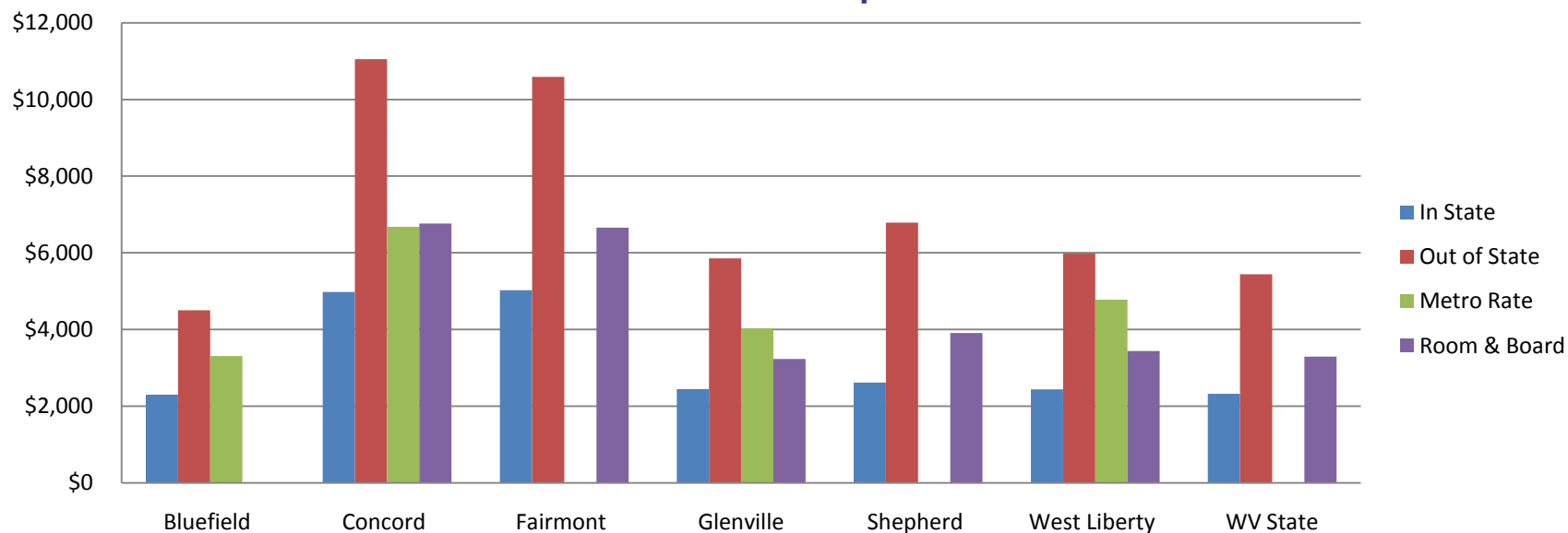


Data reflects the 2003 mandated separation of the community and technical colleges.

Fall 2009 Tuition Comparison

Institution Name	In-State Tuition	Out-of-State Tuition	Metro Rate	Room & Board
Bluefield State College	\$2,298	\$4,500	\$3,306	NA
Concord University	\$4,974	\$11,050	\$6,676	\$6,766
Fairmont State University	\$5,024	\$10,590	NA	\$6,652
Glenville State College	\$2,444	\$5,851	\$4,032	\$3,230
Shepherd University	\$2,617	\$6,787	NA	\$3,908
West Liberty University	\$2,440	\$5,975	\$4,780	\$3,435
West Virginia State University	\$2,322	\$5,442	NA	\$3,293

Tuition Comparison



Crime Statistics 1999-2008

Alleged Crime Reported	1999	2000	2001	2002	2003	2004	2005	2006	2007	2008
Murder	0	0	0	0	0	0	0	0	0	0
Negligent Manslaughter	0	0	0	0	0	0	0	0	0	0
Sex Offenses, Forcible and Non-Forcible	1	3	1	1	1	3	0	0	0	0
Robbery	0	0	0	0	0	0	0	0	0	0
Aggravated Assault	1	0	0	0	0	0	0	0	0	0
Burglary	6	4	5	2	3	4	7	6	6	7
Motor Vehicle Theft	0	0	0	0	0	0	0	0	1	0
Arson	0	0	0	0	0	0	0	0	1	0
Liquor Law Violations	19	44	39	40	7	50	57	20	19	12
Drug Abuse Violations	3	4	2	6	10	11	8	8	5	6
Weapons Violations	0	1	0	0	0	0	0	0	1	0
Larcenies	10	12	16	16	20	3	3	14	14	8

These statistics represent all alleged crimes reported to campus, city, county, and state police as having occurred on college property. These statistics do not reflect the number of arrests made for the alleged crimes; rather, they reflect only reports thereof.



200 High Street
Glenville, WV 26351
(304) 462-7361
www.glenville.edu