



GLENVILLE
STATE COLLEGE

Fact Book

2011

Table of Contents

Enrollment Trends	Page
Fall	
Fall Enrollment by Class	1
First-Time Freshmen	2
First-Time Freshmen – Baccalaureate Program	3
First-Time Freshmen – Associate Program	4
New Transfers	5
New Transfers – Baccalaureate Program Enrollment	6
New Transfers – Associate Program Enrollment	6
Total Headcount & FTE by Course Location	7
Total Headcount & FTE by Online Courses	7
Fall Enrollment Comparison	8
Fall Enrollment FTE Comparison	9
Applicants Accepted and Enrolled – All students	10
Applicants Accepted and Enrolled – First-Time Freshmen	11
Applicants Accepted and Enrolled – Transfer Students	12
Applicants Accepted and Enrolled – Re-Admit Students	13
Spring	
Spring Enrollment by Class	14
New First-Time Freshmen for Spring	15
New First-Time Freshmen for Spring – Baccalaureate Program	16
New First-Time Freshmen for Spring – Associate Program	16
New Transfers for Spring	17
New Transfers for Spring – Baccalaureate Program	18
New Transfers for Spring – Associate Program	18
Summer	
Summer Enrollment by Class	19

Retention
Rates

Fall to Fall

Retention of All Students – Degree & Non-Degree Seeking	20
First-Time, Full-Time Students First to Second Year	20
Full-Time Students Retention, Fall – Fall, Baccalaureate Program	21
Full-Time Students Retention, Fall – Fall, Associate Program	21

Fall to Spring

Retention of All Students – Degree & Non-Degree Seeking	22
Full-Time Students Retention, Fall – Spring, Baccalaureate Program	23
Full-Time Students Retention, Fall – Spring, Associate Program	23

Spring to Fall

Retention of All Students – Degree & Non-Degree Seeking	24
Full-Time Students Retention, Spring – Fall, Baccalaureate Program	25
Full-Time Students Retention, Spring – Fall, Associate Program	25

Graduation

Six Year Graduation Rates (First-Time, Full-Time)	26
Five Year Graduation Rates (First-Time, Full-Time)	26
Four Year Graduation Rates (First-Time, Full-Time)	26
Six Year Graduation Rates (received Athletic Related Financial Aid)	27

Program
Profile

Full-Time Enrollment by Degree Program	28
Part-Time Enrollment by Degree Program	29
Enrollment by Academic Program	30
Graduation by Academic Program	33
Degrees Conferred	36

Student
Profile

Student Profile Summary	37
Enrollment by Gender	38
Enrollment by State of Residence	39
Enrollment by Ethnicity	40
Average Age of All Students	41
Students Age 25 and Older – All	41
Students Age 25 and Older – All Freshmen	42
Students Age 25 and Older – Part-Time	42
ACT Scores and SAT Scores – Fall	43
ACT Scores and SAT Scores – Spring	44
Grade Point Averages – Semester	45
Grade Point Averages – Cumulative	45
Enrollment in One or More Developmental Courses - Fall	46
Enrollment in One or More Developmental Courses –Spring	46
West Virginia County Enrollment – Top 25 by number Enrolled	47
West Virginia County Enrollment – by County	48
Residence Hall Occupancy Rates	50

Hidden Promise

Hidden Promise Consortium Data	51
--------------------------------	----

Faculty
Profile

Student/Faculty Ratios	52
Full-Time Faculty by Academic Rank	53
Full-Time Faculty by Tenure Status	53
Full-Time Faculty by Highest Degree Held	54
Part-Time Faculty by Highest Degree Held	55
Full-Time Faculty by Gender	56
Full-Time Faculty by Ethnicity	57
Full Time Instructional Faculty – Average Nine-Month Salary	58

Financial	
Annual Tuition Comparisons	59
Semester Tuition and Fees	59
Revenue Summarized	60
Educational and General (E&G) Expenditures Summarized	61
Financial Aid Summary, First-Time Freshman	62
Financial Aid Processed	62
Organizational Charts	
Board of Governors, President, and Executive Staff	63
Academic and Student Affairs	64
External Relations	65
Business & Finance	66
Committees	
Academic Appeals, Academic Policy, Assessment, Athletic, College Leadership, College Tenure/Promotion, Commencement/Convocation, Curriculum	67
Diversity, Enrollment Management, Faculty Development, Faculty Senate, Financial Aid Appeals, Homecoming, International Review, International	68
Judicial Council, Library Advisory ,Retention, Scholarship, Staff Council, Student Government Association, Student Life, Textbook Affordability	69

Fall reporting posted in October 2011 to
 IPEDS Integrated Postsecondary Education Data System
 HEPC West Virginia Higher Education Policy Commission

Fall Enrollment by Class

Class	2005	2006	2007	2008	2009	2010	2011
Freshman	419	434	446	487	569	708	682
Sophomore	249	216	182	204	180	247	264
Junior	198	207	181	165	161	157	226
Senior	340	303	333	331	323	331	308
Non-Degree ¹	186	221	299	256	488	385	377
Total Headcount	1,392	1,381	1,441	1,443	1,721	1,828	1857

Percentage of Fall Enrollment by Class

Class	2005	2006	2007	2008	2009	2010	2011
Freshman	30%	31%	31%	34%	33%	39%	37%
Sophomore	18%	16%	13%	14%	10%	13%	14%
Junior	14%	15%	13%	11%	9%	9%	12%
Senior	24%	22%	23%	23%	19%	18%	17%
Non-Degree ¹	13%	16%	20%	18%	28%	21%	20%
Total Headcount	1,392	1,381	1,441	1,443	1,721	1,828	1857

¹ Contains: students not seeking a degree and high school early entrance program students.

First-Time Freshmen

Term	Enrolled Full-Time	Male	Female	Enrolled Part-Time	Male	Female	Total Enrolled
Fall 2005	301	165	136	3	0	3	304
Fall 2006	267	140	127	1	1	0	268
Fall 2007	285	150	135	6	3	3	291
Fall 2008	302	175	127	1	0	1	303
Fall 2009	329	175	154	2	0	2	331
Fall 2010 ¹	313	172	141	103	93	10	416
Fall 2011	284	182	102	71	60	11	355

¹ Significant Fall 2010 increases reflects enrollment in new degree offerings and growth at Federal Corrections Institution (FCI) Gilmer and West Virginia Department of Military Affairs and Public Safety (DMAPS).

First-Time Freshmen - Baccalaureate Program

Term	Enrolled Full-Time	Male	Female	Enrolled Part-Time	Male	Female	Total Enrolled
Fall 2005	275	149	126	3	0	3	278
Fall 2006	248	127	121	1	1	0	249
Fall 2007	269	139	130	6	3	3	275
Fall 2008	278	158	120	1	0	1	279
Fall 2009	291	155	136	0	0	0	291
Fall 2010 ¹	149	85	77	1	0	1	150
Fall 2011	155	91	64	2	2	0	157

¹Effective Fall 2010, students admitted to a baccalaureate program as provisional/conditional is capped at 10% per HEPC requirements.

First-Time Freshmen - Associate Program

Term	Enrolled Full-Time	Male	Female	Enrolled Part-Time	Male	Female	Total Enrolled
Fall 2005	26	16	10	0	0	0	26
Fall 2006	19	13	6	1	0	0	19
Fall 2007	16	11	5	0	0	0	16
Fall 2008	24	17	7	0	0	0	24
Fall 2009	38	20	18	1	0	1	39
Fall 2010 ¹	164	87	64	102	93	9	266
Fall 2011	129	91	38	69	58	11	198

¹Effective Fall 2010, students admitted to a baccalaureate program as provisional/conditional is capped at 10% per HEPC requirements.

New Transfers for Fall

Term	Enrolled Full-Time	Male	Female	Enrolled Part-Time	Male	Female	Total Enrolled
Fall 2005	55	36	19	2	1	1	57
Fall 2006	55	32	23	2	1	1	57
Fall 2007	79	49	30	20	2	0	81
Fall 2008	83	50	33	7	4	3	90
Fall 2009	78	50	28	5	2	3	83
Fall 2010 ¹	104	54	50	56	28	28	160
Fall 2011	101	60	41	51	29	22	152

¹Change reflects the number of West Virginia Department of Military Affairs and Public Safety (DMAPS) transferring into our Associate Criminal Justice Program.

New Transfers - Baccalaureate Program

Term	Enrolled Full-Time	Male	Female	Enrolled Part-Time	Male	Female	Total Enrolled
Fall 2005	52	35	17	2	1	1	54
Fall 2006	51	28	23	2	1	1	53
Fall 2007	77	47	30	2	0	2	79
Fall 2008	77	44	33	7	4	3	84
Fall 2009	70	46	24	5	2	3	75
Fall 2010	70	38	32	4	2	2	74
Fall 2011	64	38	26	5	0	5	69

New Transfers - Associate Program

Term	Enrolled Full-Time	Male	Female	Enrolled Part-Time	Male	Female	Total Enrolled
Fall 2005	3	1	2	0	0	0	3
Fall 2006	4	4	0	0	0	0	4
Fall 2007	2	2	0	0	0	0	2
Fall 2008	6	6	0	0	0	0	6
Fall 2009	8	4	4	0	0	0	8
Fall 2010 ¹	34	16	18	52	26	26	86
Fall 2011	37	22	15	42	27	15	79

¹Change reflects the number of West Virginia Department of Military Affairs and Public Safety (DMAPS) transferring into our Associate Criminal Justice Program.

Headcount and FTE by Course Location

Location	Fall 2007		Fall 2008		Fall 2009		Fall 2010		Fall 2011	
	Headcount	FTE	Headcount	FTE	Headcount	FTE	Headcount	FTE	Headcount	FTE
Glenville Campus	1162	1077	1173	1130	1194	1110	1277	1140	1232	1121
FCI Gilmer	102	27	162	43	191	58	203	85	196	69
Morris Training Center	NA	NA	NA	NA	61	4	32	21	271 ³	65 ³
New River ¹	1	0	14	7	22	9	15	5	11	5
High Schools	165	46.87	91	24	158	56.13	185	75	152	42

Headcount and FTE by Online Courses ²

Location	Fall 2007		Fall 2008		Fall 2009		Fall 2010		Fall 2011	
	Headcount	FTE	Headcount	FTE	Headcount	FTE	Headcount	FTE	Headcount	FTE
Glenville Campus	263	60	261	52	336	88	449	105	415	109
Morris Training Center	NA	NA	NA	NA	137	42	131	63	271 ³	65 ³
Total	263	60	261	52	473	130	580	168	686	174

¹ New River – Education courses offered to students in Summersville

² Web based courses as a subset of total enrollment.

³ All DMAPS courses originating at the Morris Training Center are now online courses

Fall Enrollment Comparison Headcount

Institution Name	Fall 2005	Fall 2006	Fall 2007	Fall 2008	Fall 2009	Fall 2010	Fall 2011
Bluefield State College	1708	1923	1804	1943	2058	2101	1929
Concord University	2826	2787	2735	2810	2924	2919	2797
Fairmont State University	4740	4611	4464	4554	4572	4708	4617
Glenville State College	1392	1381	1441	1443	1721	1828	1857
Shepherd University	3901	4091	4119	4283	4370	4336	4393
West Liberty State College	2248	2268	2405	2508	2645	2738	2787
West Virginia State University	3491	3502	3218	3110	3971	3239	2827

Fall Enrollment FTE Comparison

Institution Name	Fall 2009	Fall 2010	Fall 2011
Bluefield State College	1751	1757	1660
Concord University	2771	2740	2723
Fairmont State University	4036	4125	4023
Glenville State College	1356	1468	1412
Shepherd University	3757	3786	3837
West Liberty State College	2553	2644	2656
West Virginia State University	2697	2475	2259

FTE by Fall Semester

Term	2005	2006	2007	2008
Fall	1277	1218	1207	1262

Applicants Accepted and Enrolled All Students

Term	Applicants	Male	Female	Number Accepted	Enrolled Full-Time	Male	Female	Enrolled Part-Time	Male	Female	Total Enrolled
Fall 2005	1076	555	521	1076	405	230	175	14	5	9	419
Fall 2006	983	483	500	979	346	182	164	15	6	9	361
Fall 2007	1209	617	592	1166	385	209	176	25	5	20	410
Fall 2008	1227	729	498	1070	409	239	170	18	7	11	427
Fall 2009	1165	584	581	1092	446	246	200	11	3	8	457
Fall 2010 ¹	1347	696	651	1094	457	247	210	174	130	44	631
Fall 2011	1588	877	711	1345	425	256	169	130	92	38	555

¹ Significant Fall 2010 increases reflects enrollment in new degree offerings and growth at Federal Corrections Institution (FCI) Gilmer and West Virginia Department of Military Affairs and Public Safety (DMAPS).

Applicants Accepted and Enrolled First-Time Freshmen

Term	Applicants	Male	Female	Number Accepted	Enrolled Full-Time	Male	Female	Enrolled Part-Time	Male	Female	Total Enrolled
Fall 2005	857	435	422	857	301	165	136	3	0	3	304
Fall 2006	794	387	407	790	267	140	127	1	1	0	268
Fall 2007	964	498	466	948	285	150	135	6	3	3	291
Fall 2008	1,021	615	406	864	302	175	127	1	0	1	303
Fall 2009	928	463	465	855	329	175	154	2	0	2	331
Fall 2010 ¹	1025	529	496	796	313	172	141	103	93	10	416
Fall 2011	1246	690	556	1,023	284	182	102	71	60	11	355

¹ Significant Fall 2010 increases reflects enrollment in new degree offerings and growth at Federal Corrections Institution (FCI) Gilmer and West Virginia Department of Military Affairs and Public Safety (DMAPS).

Applicants Accepted and Enrolled New Transfer Students

Term	Applicants	Male	Female	Number Accepted	Enrolled Full-Time	Male	Female	Enrolled Part-Time	Male	Female	Total Enrolled
Fall 2005	129	75	54	129	55	36	19	2	1	1	57
Fall 2006	119	65	54	119	55	32	23	2	1	1	57
Fall 2007	168	92	76	168	79	49	30	2	0	2	81
Fall 2008	156	90	66	156	83	50	33	7	4	3	90
Fall 2009	167	87	80	167	78	50	28	5	2	3	83
Fall 2010 ¹	229	123	106	205	104	54	50	56	28	28	160
Fall 2011	255	147	108	236	101	60	41	51	29	22	152

¹ Significant Fall 2010 increases reflects enrollment in new degree offerings and growth at Federal Corrections Institution (FCI) Gilmer and West Virginia Department of Military Affairs and Public Safety (DMAPS).

**Applicants Accepted and Enrolled
Re-Admit Students**

Term	Applicants	Male	Female	Number Accepted	Enrolled Full-Time	Male	Female	Enrolled Part-Time	Male	Female	Total Enrolled
Fall 2005	90	45	45	90	49	29	20	9	4	5	58
Fall 2006	70	31	39	70	24	10	14	12	4	8	36
Fall 2007	77	27	50	77	21	10	11	17	2	15	38
Fall 2008	50	24	26	50	24	11	10	10	3	7	34
Fall 2009	70	34	36	70	39	21	18	4	1	3	43
Fall 2010	93	44	49	93	40	21	19	15	9	6	55
Fall 2011	87	40	47	86	40	14	26	8	3	5	48

Spring Enrollment by Class

Class	2006	2007	2008	2009	2010	2011
Freshman	393	403	402	471	578	611
Sophomore	210	226	207	221	219	264
Junior	201	199	181	173	178	213
Senior	353	327	353	334	344	338
Non-Degree ¹	73	96	97	108	190	160
Total Headcount	1,222	1,251	1,240	1,307	1509	1586

FTE by Spring Semesters

Term	2006	2007	2008	2009	2010	2011
Spring	1121	1079	1088	1163	1294	1340

New First-Time Freshmen for Spring

Term	Enrolled Full-Time	Male	Female	Enrolled Part-Time	Male	Female	Total Enrolled
Spring 2006	24	15	9	0	0	0	24
Spring 2007	20	13	7	5	3	2	25
Spring 2008	24	14	10	4	1	3	28
Spring 2009	30	21	9	0	0	0	30
Spring 2010	33	18	15	3	1	2	36
Spring 2011	41	26	15	29	26	3	70

New First-Time Freshmen for Spring - Baccalaureate Program

Term	Enrolled Full-Time	Male	Female	Enrolled Part-Time	Male	Female	Total Enrolled
Spring 2006	22	14	8	0	0	0	22
Spring 2007	18	12	6	3	2	1	21
Spring 2008	22	12	10	4	1	3	26
Spring 2009	22	17	5	0	0	0	22
Spring 2010	21	11	10	0	0	0	21
Spring 2011	13	7	6	12	10	2	25

New First-Time Freshmen for Spring – Associate Program

Term	Enrolled Full-Time	Male	Female	Enrolled Part-Time	Male	Female	Total Enrolled
Spring 2006	2	1	1	0	0	0	2
Spring 2007	2	1	1	2	1	1	4
Spring 2008	14	10	4	0	0	0	14
Spring 2009	8	4	4	0	0	0	8
Spring 2010	12	7	5	2	0	2	14
Spring 2011	28	19	9	17	16	1	45

New Transfers for Spring

Term	Enrolled Full-Time	Male	Female	Enrolled Part-Time	Male	Female	Total Enrolled
Spring 2006	36	19	17	2	2	0	38
Spring 2007	13	4	9	1	0	1	14
Spring 2008	25	9	16	3	2	1	28
Spring 2009	15	8	7	5	1	4	20
Spring 2010	32	24	8	1	1	0	33
Spring 2011	61	37	24	26	17	9	87

New Transfers for Spring - Baccalaureate Program

Term	Enrolled Full-Time	Male	Female	Enrolled Part-Time	Male	Female	Total Enrolled
Spring 2006	35	19	16	1	1	0	36
Spring 2007	11	4	7	1	0	1	12
Spring 2008	24	9	15	3	2	1	27
Spring 2009	13	6	7	5	1	4	18
Spring 2010	26	22	4	1	1	0	27
Spring 2011	40	20	20	16	8	8	56

New Transfers for Spring - Associate Program

Term	Enrolled Full-Time	Male	Female	Enrolled Part-Time	Male	Female	Total Enrolled
Spring 2006	1	0	1	1	1	0	2
Spring 2007	2	0	2	0	0	0	2
Spring 2008	1	0	1	0	0	0	1
Spring 2009	2	2	0	0	0	0	2
Spring 2010	6	2	4	0	0	0	6
Spring 2011	21	17	4	10	9	1	31

Summer Enrollment by Class

Class	2006	2007	2008	2009	2010	2011
Freshman	75	32	44	161	201	188
Sophomore	44	37	75	72	115	113
Junior	54	52	83	60	58	82
Senior	116	122	126	115	125	146
Non-Degree ¹	18	8	95	0	43	18
Headcount Total	307	251	423	422	542	547

FTE by Summer Semesters

Term	2006	2007	2008	2009	2010	2011
Summer	119	90	116	138	192	208

**Retention of All Students
Degree and Non-Degree Seeking**

	Fall 2005 to Fall 2006	Fall 2006 to Fall 2007	Fall 2007 to Fall 2008	Fall 2008 to Fall 2009	Fall 2009 to Fall 2010	Fall 2010 to Fall 2011
Total	56.6%	57.0%	53.2%	55.9%	53.3%	53.3%

**First-Time, Full-Time Students
First to Second-Year Retention**

	Fall 2005 to Fall 2006	Fall 2006 to Fall 2007	Fall 2007 to Fall 2008	Fall 2008 to Fall 2009	Fall 2009 to Fall 2010	Fall 2010 to Fall 2011
Bachelor's	60%	56%	56%	56%	58%	70%
Associate's	50%	26%	50%	38%	55%	48%
Total	58.5%	53.6%	55.8%	55%	58%	59%

Full-Time Students - Baccalaureate Retention
Fall to Fall

	2005 - 2006	2006 - 2007	2007 - 2008	2008 - 2009	2009 - 2010	2010 - 2011
First-Time Freshmen	60%	56%	56%	56%	58%	70%
All Freshmen	53%	50%	53%	63%	66%	68%
Sophomore	75%	68%	73%	71%	79%	82%
Junior	74%	75%	72%	78%	78%	84%

Full-Time Students - Associate Retention
Fall to Fall

	2005 - 2006	2006 - 2007	2007 - 2008	2008 - 2009	2009 - 2010	2010 - 2011
First-Time Freshmen	50%	26%	50%	38%	55%	47%
All Freshmen	56%	19%	49%	45%	62%	46%
Sophomore	53%	55%	67%	71%	78%	69%
Junior	63%	63%	50%	100%	47%	58%

**Retention of All Students
Degree and Non-Degree Seeking**

	Fall 2005 to Spring 2006	Fall 2006 to Spring 2007	Fall 2007 to Spring 2008	Fall 2008 to Spring 2009	Fall 2009 to Spring 2010	Fall 2010 to Spring 2011
Total	57%	57%	53%	56%	53%	53%

Full-Time Students - Baccalaureate Retention
Fall to Spring

	2005 - 2006	2006 - 2007	2007 - 2008	2008 - 2009	2009 - 2010	2010 - 2011
First-Time Freshmen	85%	81%	80%	88%	83%	87%
All Freshmen	77%	79%	80%	90%	83%	83%
Sophomore	87%	83%	83%	85%	85%	90%
Junior	89%	88%	95%	92%	93%	90%

Full-Time Students - Associate Retention
Fall to Spring

	2005 - 2006	2006 - 2007	2007 - 2008	2008 - 2009	2009 - 2010	2010 - 2011
First-Time Freshmen	65%	84%	75%	79%	84%	75%
All Freshmen	70%	71%	73%	80%	85%	73%
Sophomore	69%	79%	100%	85%	100%	95%
Junior	67%	83%	67%	100%	58%	89%

**Retention of All Students
Degree and Non-Degree Seeking**

	Spring 2006 to Fall 2006	Spring 2007 to Fall 2007	Spring 2008 to Fall 2008	Spring 2009 to Fall 2009	Spring 2010 to Fall 2010	Spring 2011 to Fall 2011
Total	67%	66%	64%	63%	65%	65%

Full-Time Students - Baccalaureate Retention
Spring to Fall

	2006 - 2006	2007 - 2007	2008 - 2008	2009 - 2009	2010 - 2010	2011 - 2011
All Freshmen	63%	62%	65%	65%	69%	72%
Sophomore	76%	69%	75%	77%	90%	88%
Junior	82%	82%	73%	77%	85%	93%

Full-Time Students - Associate Retention
Spring to Fall

	2006 - 2006	2007 - 2007	2008 - 2008	2009 - 2009	2010 - 2010	2011 - 2011
All Freshmen	62%	33%	70%	44%	61%	55%
Sophomore	42%	59%	59%	55%	58%	70%
Junior	94%	42%	89%	100%	46%	78%

Six-Year Graduation Rates
Started and Completed at Same Institution

First-Time, Full-Time Students (Entering Year)						
	2000	2001	2002	2003	2004	2005
Glenville State College Baccalaureate	28%	25%	26%	33%	28%	30%
All WV State Colleges Baccalaureate Avg.	44%	43%	45%	46%	45%	45%

Five-Year Graduation Rates

First-Time, Full-Time Students (Entering Year)							GSC 5 year Average
	2001	2002	2003	2004	2005	2006	
Glenville State College	21%	25%	26%	25%	24%	26%	25%

Four-Year Graduation Rates

First-Time, Full-Time Students (Entering Year)							GSC 5 year Average
	2002	2003	2004	2005	2006	2007	
Glenville State College	14%	14%	26%	16%	18%	13%	17%

Six-Year Graduation Rates

Baccalaureate Students Receiving Athletic-Related Financial Aid (Entering Year)				
Entering Year	First-Time Full-Time Freshmen	Certificate or Associates Received	Bachelors Received	Percentage
Fall 1995	23	0	10	43.5%
Fall 1996	19	0	7	36.8%
Fall 1997	17	1	5	35.3%
Fall 1998	51	0	23	45.1%
Fall 1999	51	0	18	35.3%
Fall 2000	43	0	18	41.9%
Fall 2001	45	0	18	40.0%
Fall 2002	41	0	19	46.3%
Fall 2003	37	1	10	29.7%
Fall 2004	47	1	19	42.6%

Full-Time Enrollment by Degree Program

Term		Total
Fall 2005		1193
	<i>Associate</i>	88
	<i>Baccalaureate</i>	1105
	<i>Non-Degree</i>	0
Fall 2006		1096
	<i>Associate</i>	57
	<i>Baccalaureate</i>	1039
	<i>Non-Degree</i>	0
Fall 2007		1078
	<i>Associate</i>	43
	<i>Baccalaureate</i>	1035
	<i>Non-Degree</i>	0
Fall 2008		1123
	<i>Associate</i>	57
	<i>Baccalaureate</i>	1066
	<i>Non-Degree</i>	0
Fall 2009		1156
	<i>Associate</i>	71
	<i>Baccalaureate</i>	1070
	<i>Non-Degree</i>	15
Fall 2010 ¹		1277
	<i>Associate</i>	324
	<i>Baccalaureate</i>	938
	<i>Non-Degree</i>	15
Fall 2011 ¹		1188
	<i>Associate</i>	290
	<i>Baccalaureate</i>	897
	<i>Non-Degree</i>	1

¹ Effective Fall 2010 new cap on the number of students allowed into Baccalaureate Degrees with low test scores or deficient HS course work.

Part-Time Enrollment by Degree Program

Term		Total
Fall 2005		199
	Associate	22
	Baccalaureate	177
	Non-Degree	0
Fall 2006		285
	Associate	11
	Baccalaureate	274
	Non-Degree	0
Fall 2007		363
	Associate	9
	Baccalaureate	354
	Non-Degree	0
Fall 2008		320
	Associate	1
	Baccalaureate	319
	Non-Degree	0
Fall 2009		565
	Associate	3
	Baccalaureate	47
	Non-Degree	515
Fall 2010		551
	Associate	330
	Baccalaureate	47
	Non-Degree	174
Fall 2011		669
	Associate	307
	Baccalaureate	55
	Non-Degree ¹	307

¹ Effective Fall 2010 new cap on the number of students allowed into Baccalaureate Degrees with low test scores or deficient HS course work.

Enrollment by Academic Program

Program	Fall 2005	Fall 2006	Fall 2007	Fall 2008	Fall 2009	Fall 2010	Fall 2011
Behavioral Sciences							
Behavioral Science (BSBS) (end 2001 as major)	13	3	0	1	NA	NA	NA
Basic & Applied Psychology (end 2001)	24	16	5	2	1	NA	NA
Criminal Justice (BSBS)	115	104	109	97	59	36	14
Psychology/Sociology	42	67	77	85	76	82	94
Total	194	190	191	185	136	118	108
Biology (BS)	45	44	49	50	43	55	51
Business Administration							
Accounting (BSBA)	42	29	39	45	27	19	25
Computer Science/Information Systems (BSBA)	28	19	18	18	14	15	23
Management (BSBA)	101	87	90	87	71	66	64
Marketing (BSBA)	26	26	21	21	19	23	20
Resort Area Management (BSBA)(start 2005)	0	0	0	0	4	5	4
Sport Management (BA) (end 2001)	NA	NA	NA	NA	NA	NA	NA
Sport Management (BS) (start 2005)	27	26	54	44	52	57	49
Total	224	187	222	215	187	185	185
Business Management (BS) (2+2 Program)	2	8	1	0	4	5	5
Chemistry (BA)	25	19	16	13	15	18	8
Criminal Justice (BS) (New Fall 2009)	NA	NA	NA	NA	41	53	77
Education							
Biological Science (9-adult) (BAED)	3	5	5	7	5	2	6
Business Ed Comprehensive (5-adult) (BAED)	6	4	5	6	5	5	7

Enrollment by Academic Program (continued)

Program	Fall 2005	Fall 2006	Fall 2007	Fall 2008	Fall 2009	Fall 2010	Fall 2011
Education (continued)							
Chemistry (9-adult) (BAED)	1	3	3	13	1	1	4
Chemistry & Physics (9-adult) (BAED)	2	1	1	0	1	2	2
Early Education (PreK-K) (BAED)	72	51	96	85	88	102	76
Elementary Education (K-6) (BAED)	37	76	2	41	8	7	7
English (5-9) (BAED)	3	6	12	8	13	16	6
English (5-adult) (BAED)	27	18	19	25	20	24	22
General Science (5-9) (BAED)	9	5	4	1	3	3	3
General Science (5-adult) (BAED)	3	2	1	1	4	5	5
Health (5-adult) (end 2010)	0	0	0	0	2	3	2
Health/Physical Education (PreK-adult)(start 2008)	NA	NA	NA	NA	12	24	33
Math (5-9) (General Math/Algebra) (BAED)	7	4	10	11	10	11	7
Math (5-adult) (BAED)	13	12	14	10	11	13	10
Multi-Categorical (K-6) (start 2006)	NA	0	0	0	25	20	22
Multi-Categorical (Special Ed) (K-adult)(end 2006)	34	18	29	29	3	1	1
Music (non-specified) (BAED)(PreK-adult)	49	46	42	45	33	35	34
Physical Education (PreK-adult) (BAED)	64	60	56	54	51	26	13
Social Studies (5-adult) (BAED)	42	40	36	33	31	31	30
Social Studies (5-9) (BAED)	6	9	12	7	13	9	7
Spanish (5-adult) (BAED)(start 2008)	NA	NA	NA	0	1	3	4
Total	378	363	347	376	340	343	301
English (BA)	24	17	14	19	17	16	22
History (BA) (renamed 2009)	24	17	15	18	19	12	6
History & Political Science (BA) (new code 2009)	NA	NA	NA	NA	NA	4	6
Interdisciplinary Studies (BA/BS)	3	1	0	1	0	0	1

Enrollment by Academic Program (continued)

Program	Fall 2005	Fall 2006	Fall 2007	Fall 2008	Fall 2009	Fall 2010	Fall 2011
Music (BA) (new 2007)	NA	NA	0	0	9	12	16
Natural Resource Management (BS)	0	90	104	106	97	110	111
Nursing (Pre-Nursing)	75	55	60	47	24	34	27
Regents Bachelor of Arts (BORBA)	12	8	16	9	12	10	18
Undeclared	50	59	35	61	51	9 ¹	10
Associate Degrees							
Criminal Justice (AS)	7	12	7	9	13	193 ²	146
Forest Technology (AS)	42	29	18	13	8	13	12
General Business (AA)	21	15	16	27	18	227 ²	247
General Studies (AA)	40	20	16	21	143	206	176
Land Surveying (AS)	16	12	12	14	13	15	16
Total	126	88	69	84	195	654	597
Non-Degree Seeking	75	238 ¹	286 ¹	263 ¹	541 ¹	190 ²	308
Total Headcount	1,392	1,381	1,441	1,443	1,721	1,828	1857

Graduation by Academic Programs

Program	2005-06	2006-07	2007-08	2008-09	2009-10	2010-11
Behavioral Science (BS)	10	2	6	1	0	0
Psychology/Sociology	18	9	4	19	14	16
Criminal Justice	17	10	9	17	13	13
Basic & Applied Psychology (<i>discontinued</i>)	0	7	1	3	2	0
Total	45	28	20	40	29	29
Biology (BS)	7	5	3	8	6	3
Business Administration (BSBA)						
Accounting (BSBA)	7	5	3	16	2	6
General Business (BSBA)	2	1	0	0	0	0
Computer and Information Systems (BSBA)	6	3	1	2	3	2
Management (BSBA)	16	18	5	13	8	11
Marketing (BSBA)	5	7	4	1	2	4
Sport Management (BA) (<i>discontinued 2001</i>)	0	3	0	3	1	4
Sport Management (BS) (<i>start 2005</i>)						
Total	36	37	13	35	16	27
Chemistry (BA)	3	6	5	5	0	4
Criminal Justice (BS) (Start Aug 2009)	NA	NA	NA	NA	1	1
Education						
Biological Science (9-Adult)	0	0	0	0	1	0
Business Ed Comprehensive (5-Adult) (BAED)	1	0	1	0	2	2
Chemistry (9-12) (BAED)	0	2	1	0	0	0
Early Education (PreK-K) (BAED)	17	11	14	10	11	23
Elementary Education (BAED)	1	3	11	0	1	1
English (5-Adult) (BAED)	0	6	1	5	0	4
English (5-9) (BAED)	7	1	0	4	2	4
General Science (5-Adult) (BAED)	1	0	0	0	0	0
General Science (5-9) (BAED)	3	1	1	1	0	1
Math (5-Adult) (BAED)	5	0	0	2	2	3

Graduation by Academic Programs (continued)

Program	2005-06	2006-07	2007-08	2008-09	2009-10	2010-11
Education (continued)						
Math (5-9) (BAED)	3	1	0	2	3	2
Multi-Categorical (K-Adult) (BAED)	8	8	6	6	5	0
Multi-Categorical (K-6) (BAED)	0	0	1	0	1	4
Multi-Subjects (K-8) (BAED) (<i>last class 0304</i>)	NA	NA	NA	NA	NA	NA
Music (PreK-Adult) (BAED)	9	6	8	2	1	4
Physical Education (PreK-Adult) (BAED)	4	3	5	6	4	2
Social Studies (5-Adult) (BAED)	6	9	2	4	3	7
Social Studies (5-9) (BAED)	4	0	0	0	1	1
Total	69	51	51	42	37	58
English (BA)	6	8	0	1	1	3
History (BA)	5	8	2	7	3	2
History Political Science (<i>new major code</i>)	0	0	0	0	1	1
Interdisciplinary Studies (BA/BS)	3	0	0	1	1	0
Music	0	0	0	1	3	1
Natural Resource Management (BS)	11	11	21	28	15	16
Regents Bachelor of Arts (BORBA)	18	16	8	16	20	16
Associate Degrees						
Administrative Science (<i>discontinued 2004</i>)	4	0	2	0	0	0
General Business	2	3	2	12	8	18
Criminal Justice (AS)	0	2	2	1	2	0
Environmental Tech (AS)(<i>discontinued 2004</i>)	3	1	NA	NA	NA	NA

Graduation by Academic Programs (continued)

Program	2005-06	2006-07	2007-08	2008-09	2009-10	2010-11
Associate Degrees (continued)						
Forest Technology (AS)	13	12	10	12	7	9
General Studies (AA)	7	5	20	3	2	1
Land Surveying (AS)	4	9	2	7	10	8
Paralegal Technology (AS)	9	0	1	0	0	0
Total	42	32	39	35	29	36
Grand Total	255	215	164	219	161	197

Degrees Conferred

Degree Type	2005-06	2006-07	2007-08	2008-09	2009-10	2010-11
Associate Degree	31	32	30	31	29	36
Baccalaureate Degree	200	182	188	179	132	161
Total	231	214	218	210	161	197

Student Profile

Fall 2005 – Fall 2011

	Fall 2005		Fall 2006		Fall 2007		Fall 2008		Fall 2009		Fall 2010		Fall 2011	
	Number	Percent	Number	Percent	Number	Percent	Number	Percent	Number	Percent	Number	Percent	Number	Percent
Students Total	1392	100%	1381	100%	1441	100%	1443	100%	1721	100%	1828	100%	1857	100%
Gender														
Male	730	52%	719	52%	742	51%	813	56%	978	57%	1010	55%	1078	58%
Female	662	48%	662	48%	699	49%	630	44%	743	43%	818	45%	779	42%
Residence														
WV Resident	1255	90%	1260	91%	1268	88%	1272	88%	1547	90%	1624	89%	1630	88%
Non-Resident	137	10%	112	9%	173	12%	171	12%	174	10%	204	11%	227	12%
Attendance Status														
Full-Time	1128	81%	1095	79%	1078	75%	1123	78%	1156	67%	1277	70%	1188	64%
Part-Time	264	19%	286	21%	363	25%	320	22%	565	33%	551	30%	667	36%
Ethnicity														
White	1206	87%	1268	92%	1235	85%	1160	80%	1424	83%	1508	82%	1452	78%
African-Amer.	81	6%	93	7%	181	13%	254	18%	249	14%	274	15%	302	16%
Other*	105	7%	20	1%	25	2%	29	2%	48	3%	46	3%	103	6%
Age**														
Under 25	1110	80%	1122	81%	1142	79%	1101	76%	1186	69%	1239	68%	1224	66%
25-29	127	9%	114	8%	126	9%	130	9%	174	10%	148	8%	181	10%
30-39	92	7%	86	6%	108	7%	144	10%	223	13%	266	14%	263	14%
40+	63	4%	59	5%	65	5%	68	5%	126	7%	157	9%	189	10%
Unknown									12	1%	18	1%		

Enrollment by Gender

Term	Total Enrollment	Males	Females	Percentage Male	Percentage Female
Fall 2005	1,392	730	662	52%	48%
Fall 2006	1,381	719	662	52%	48%
Fall 2007	1,441	742	699	51%	49%
Fall 2008	1,443	813	630	56%	44%
Fall 2009	1,721	978	743	57%	43%
Fall 2010	1,828	1010	818	55%	45%
Fall 2011	1,857	1078	779	58%	42%

Enrollment By State of Residence

Fall

Home of Residence	2005	2006	2007	2008	2009	2010	2011
Alabama	0	0	2	4	2	1	1
California	7	7	9	7	7	11	6
District of Columbia	3	1	3	9	8	14	30
Florida	10	7	17	18	15	20	13
Georgia	4	2	6	4	6	4	8
Illinois	0	0	1	1	2	8	6
Kentucky	3	2	1	0	1	3	1
Maryland	16	14	23	25	18	28	38
Michigan	2	8	8	6	5	4	5
North Carolina	3	2	2	4	1	4	5
New York	1	0	1	5	8	5	12
Ohio	33	31	27	30	30	36	50
Pennsylvania	7	14	19	9	5	4	2
Texas	2	2	6	4	2	2	3
Virginia	9	10	16	32	42	46	57
West Virginia	1,255	1,258	1,275	1,269	1,547	1,624	1601
All Other States	15	12	20	13	20	12	14
Foreign Countries	22	11	5	3	2	2	5
Total	1,392	1,381	1,441	1,443	1,721	1,828	1,857

Enrollment by Ethnicity

Term	White Non-Hispanic	Black Non-Hispanic	Hispanic	Asian or Pacific Islander	American Indian or Alaskan Native	Non-Resident Aliens	Unknown	Total	% Minority
Fall 2005	1,206	81	11	13	1	0	0	1,392	7.61%
Fall 2006	1,269	92	10	9	1	0	0	1,381	8.11%
Fall 2007	1,235	181	16	5	4	0	0	1,441	14.29%
Fall 2008	1,160	254	18	6	5	0	0	1,443	19.61%
Fall 2009	1,424	249	21	4	7	0	16	1,721	16.33%
Fall 2010	1,508	274	26	6	10	0	4	1,828	17.29%
Fall 2011	1,452	302	33	6	15	0	49	1,857	19.17%

Percentage of Enrollment by Ethnicity

Term	White Non-Hispanic	Black Non-Hispanic	Hispanic	Asian or Pacific Islander	American Indian or Alaskan Native	Non-Resident Aliens	Unknown	% Minority
Fall 2005	87%	6%	.8%	.9%	0%	0%	0%	7.61%
Fall 2006	92%	7%	.7%	.6%	0%	0%	0%	8.11%
Fall 2007	86%	13%	1%	.3%	.2%	0%	0%	14.29%
Fall 2008	80%	18%	1%	.4%	.3%	0%	0%	19.61%
Fall 2009	83%	14%	1%	.2%	.4%	0%	.9%	16.33%
Fall 2010	82%	15%	1%	.3%	.5%	0%	.2%	17.29%
Fall 2011	78%	16%	2%	.3%	.8%	0%	3%	19.17%

Average Age of All Students

Term	Age
Fall 2005	21.9
Fall 2006	22.9
Fall 2007	22.8
Fall 2008	22.9
Fall 2009 ¹	25.2
Fall 2010	25.1
Fall 2011	25.6

Students Age 25 and Older – All

Term	Undergraduate Enrollment	Undergraduates 25 Years or Older	Percent
Fall 2005	1329	282	21%
Fall 2006	1381	259	19%
Fall 2007	1441	299	21%
Fall 2008	1443	342	24%
Fall 2009 ¹	1721	523	30%
Fall 2010 ¹	1828	589	32%
Fall 2011 ¹	1857	633	34%

¹ Significant change is due to enrollment growth of FCI Gilmer and DMAPS students

Students Age 25 and Older - All Freshmen

Term	Total Freshmen	Freshmen 25 Years or Older	% of Total Freshmen
Fall 2005	419	27	6%
Fall 2006	434	88	20%
Fall 2007	446	77	17%
Fall 2008	490	90	18%
Fall 2009 ¹	569	96	17%
Fall 2010 ¹	708	239	34%
Fall 2011	682	236	35%

Students Age 25 and Older - Part-Time

Term	Part-Time Enrollment	Part-Time Students 25 Years or Older	Percent of Part-Time Student 25 Years or Older
Fall 2005	264	125	47%
Fall 2006	285	111	39%
Fall 2007	363	162	45%
Fall 2008	320	190	59%
Fall 2009 ¹	565	327	58%
Fall 2010 ¹	551	325	59%
Fall 2011	669	417	62%

¹ Large change is due to the number of FCI Gilmer and DMAPS students enrolled.

ACT Scores and SAT Scores - Fall
First-Time/Full-Time

			State College
Term	ACT Average	SAT Average	System ACT Average
Fall 2005	18.9	866	20.4
Fall 2006	18.6	844	20.6
Associate	17.4	805	
Baccalaureate	18.7	847	
Fall 2007	19.3	834	20.6
Associate	18.6	N/A	
Baccalaureate	19.4	834	
Fall 2008	19.0	823	20.7
Associate	16.9	740	
Baccalaureate	19.2	828	
Fall 2009	19.1	852	20.7
Associate	18.0	800	
Baccalaureate	19.2	853	
Fall 2010	19.4	836	20.7
Associate	16.3	719	
Baccalaureate	21.6	949	
Fall 2011	19.0	800	NA
Associate	16.7	745	
Baccalaureate	20.4	858	

ACT Scores and SAT Scores – Spring First-Time/Full-Time

Term	ACT Average	SAT Average
Spring 2006	16.56	883
Spring 2007	17.91	780
Associate	15	0
Baccalaureate	18.56	780
Spring 2008	19	0
Associate	16	0
Baccalaureate	19.38	657
Spring 2009	17.64	815
Associate	14.29	0
Baccalaureate	19.20	815
Spring 2010	18.68	700
Associate	15.11	0
Baccalaureate	20.69	700
Spring 2011	18.27	1070
Associate	18	840
Baccalaureate	18.75	1300

Grade Point Averages Semester¹

	2005-06		2006-07		2007-08		2008-09		2009-10		2010-11	
	Fall	Spring	Fall	Spring	Fall	Spring	Fall	Spring	Fall	Spring	Fall	Spring
All Students	2.49	2.52	2.29	2.56	2.28	2.47	2.29	2.47	2.39	2.42	2.29	2.33
All Freshmen	2.02	2.16	2.17	2.39	2.13	2.20	2.03	2.09	2.21	2.20	2.27	2.04
First-Time Full-Time Freshmen ¹	2.42	1.99	2.38	2.27	2.55	2.09	2.20	2.42	2.47	1.96	2.49	2.41

Grade Point Averages Cumulative²

	2005-06		2006-07		2007-08		2008-09		2009-10		2010-11	
	Fall	Spring	Fall	Spring	Fall	Spring	Fall	Spring	Fall	Spring	Fall	Spring
All Students	2.62	2.72	2.43	2.77	2.49	2.75	2.47	2.66	2.56	2.62	2.55	2.61
All Freshmen	2.13	2.37	2.31	2.30	2.40	2.54	2.15	2.32	2.42	2.47	2.53	2.44
First-Time Full-Time Freshmen ¹	2.44	1.94	2.40	2.24	2.54	2.08	2.20	2.41	2.51	2.00	2.49	2.47

¹ Semester GPA shows work completed for the semester.

² Cumulative GPA includes the total of all dual credit, transfer, and GSC work.

Enrollment in One or More Developmental Courses – Fall
First-Time/Full-Time¹

Term	Freshmen	Developmental Courses	Percent in Developmental Courses
Fall 2005	252	139	55%
Fall 2006	267	172	64%
Fall 2007	291	190	65%
Fall 2008	303	191	63%
Fall 2009	329	214	65%
Fall 2010	313	189	60%
Fall 2011	284	179	63%

Enrollment in One or More Developmental Courses - Spring
First-Time/Full-Time¹

Term	Freshmen	Developmental Courses	Percent in Developmental Courses
Spring 2006	24	18	75%
Spring 2007	20	9	45%
Spring 2008	24	16	67%
Spring 2009	30	24	80%
Spring 2010	33	26	78%
Spring 2011	41	37	90%

West Virginia County Enrollment – Top 25 Fall

County	2005	2006	2007	2008	2009	2010	2011
Gilmer	300	239	229	231	237	284	219
Gilmer (FCI)	0	84	102	162	191	181	188
Braxton	139	186	162	147	165	195	167
Calhoun	124	100	102	85	105	99	86
Ritchie	41	36	58	48	44	43	80
Lewis	75	74	60	62	72	73	70
Nicholas	70	72	50	56	83	90	66
Roane	27	33	43	56	56	54	56
Kanawha	26	40	40	39	44	52	51
Randolph	20	24	35	31	44	48	47
Wood	32	25	30	27	38	44	46
Harrison	28	22	27	29	33	32	44
Clay	37	34	33	32	33	38	35
Upshur	48	37	23	28	23	29	34
Raleigh	11	12	42	13	39	39	30
Fayette	33	19	14	17	26	25	28
Berkeley	9	5	10	13	30	21	27
Webster	38	29	23	24	27	28	23
Jackson	22	20	23	17	15	21	20
Wirt	23	25	17	13	19	22	17
Doddridge	7	11	11	12	10	16	14
Greenbrier	7	8	10	7	14	13	14
Cabell	8	9	7	6	16	12	11
Pocahontas	7	5	7	7	16	8	10
Putnam	11	8	12	9	8	8	10
Pleasants	3	4	9	6	14	13	7

West Virginia County Enrollment by County

County	2005	2006	2007	2008	2009	2010	2011
Barbour	10	5	9	9	9	9	9
Berkeley	9	5	10	13	30	21	27
Boone	3	2	2	3	4	3	9
Braxton	139	186	162	147	165	195	167
Brooke	1	2	1	1	2	1	1
Cabell	8	9	7	6	16	12	11
Calhoun	124	100	102	85	105	99	86
Clay	37	34	33	32	33	38	35
Doddridge	7	11	11	12	10	16	14
Fayette	33	19	14	17	26	25	28
Gilmer	300	239	229	231	237	284	219
Gilmer (FCI)	0	84	102	162	191	181	188
Grant	0	3	5	4	5	3	3
Greenbrier	7	8	10	7	14	13	14
Hampshire	1	1	2	2	11	6	6
Hancock	7	7	6	5	3	3	4
Hardy	6	5	5	6	3	2	1
Harrison	28	22	27	29	33	32	44
Jackson	22	20	23	17	15	21	20
Jefferson	4	3	1	2	3	7	7
Kanawha	26	40	40	39	44	52	51
Lewis	75	74	60	62	72	73	70
Lincoln	3	3	2	1	4	4	10
Logan	0	3	3	3	3	7	5
Marion	10	5	3	4	4	7	11
Marshall	4	3	2	1	8	6	10
Mason	8	7	4	2	10	5	17
McDowell	0	0	1	0	4	2	10

West Virginia County Enrollment by County (continued)

County	2005	2006	2007	2008	2009	2010	2011
Mercer	1	1	5	1	6	7	8
Mineral	2	5	7	9	5	3	1
Mingo	4	1	3	3	2	3	2
Monongalia	2	2	3	3	4	6	5
Monroe	1	1	2	1	3	3	5
Morgan	0	0	0	0	2	2	3
Nicholas	70	72	50	56	83	90	66
Ohio	0	0	1	1	6	2	4
Pendleton	14	12	10	10	6	6	10
Pleasants	3	4	9	6	14	13	7
Pocahontas	7	5	7	7	16	8	10
Preston	5	4	1	2	4	8	4
Putnam	11	8	12	9	8	8	10
Raleigh	11	12	42	13	39	39	30
Randolph	20	24	35	31	44	48	47
Ritchie	41	36	58	48	44	43	80
Roane	27	33	43	56	56	54	56
Summers	2	3	5	4	3	2	7
Taylor	1	1	1	2	5	4	8
Tucker	4	4	4	4	14	4	7
Tyler	3	2	4	4	8	2	5
Upshur	48	37	23	28	23	29	34
Wayne	0	0	1	0	0	4	5
Webster	38	29	23	24	27	28	23
Wetzel	11	5	4	1	9	5	8
Wirt	23	25	17	13	19	22	17
Wood	32	25	30	27	38	44	46
Wyoming	2	3	0	4	7	10	8

Residence Hall Occupancy Rates

Year	Fall Term				Spring Term			
	Total Head Count	Occupancy Percentage	Private Room HC	Private Room Percentage	Total Head Count	Occupancy Percentage	Private Room HC	Private Room Percentage
2005-2006	478	80.20% ¹	316	66.10%	412	69.12% ¹	306	74.27%
2006-2007	435	73.00% ¹	351	82.39%	371	55.00% ¹	286	77.09%
2007-2008	452	76.00% ¹	269	60.00%	380	64.00% ¹	262	68.95%
2008-2009	494	83.00% ¹	302	51.00%	444	75.00% ¹	284	63.96%
2009-2010	503	84.40% ¹	338	67.20%	468	78.52% ¹	271	57.91%
2010-2011	518	71.55% ²	354	68.34%	457	72.08%	344	54.26%
2011-2012	598 ⁴	94.32%	338	98.26%				

¹ Maximum Occupancy 2003-2010 spring is 596 students.

² Maximum Occupancy Fall 2010 is 724 for Pioneer Village, Pickens Hall and Goodwin Hall.

³ Beginning in Spring 2011 Maximum Occupancy of Pioneer Village and Goodwin Hall will be 634

⁴ Headcount as of 2 day of classes.

Hidden Promise Consortium Data

Hidden Promise County	County Population ¹	Student Enrollment 2009-2010 ¹	% Low Income ¹	Number of High School Graduates 2009-2010 ¹	ACT ²		College Going Rate Fall 2009 ³	GSC Freshmen Hidden Promise Fall 2010	GSC Total Hidden Promise Fall 2010	GSC Total From County Fall 2010
					% Test Takers	Composite Score				
Barbour	15,557	2,478	61%	160	55.5%	20.0	52.3%	1	2	9
Braxton	14,702	2,230	59%	145	54.5%	19.7	48%	0	2	167
Calhoun	7,582	1,104	65%	91	65.9%	20.3	48.1%	4	14	86
Clay	10,330	2,043	68%	141	51.8%	20.3	40.1%	1	1	35
Doddridge	7,403	1,169	62%	85	61.2%	20.2	50.4%	0	1	14
Gilmer	7,160	939	61%	58	51.7%	20.8	54.9%	4	13	219
Harrison	66,652	11,126	47%	685	61.0%	21.2	63.7%	0	0	44
Lewis	16,919	2,650	58%	180	52.2%	19.7	55.7%	2	9	70
Nicholas	26,562	4,042	58%	275	59.8%	20.0	50.2%	3	4	66
Pleasants	7,514	1,299	49%	97	54.6%	20.0	56.7%	0	0	7
Pocahontas	9,131	1,202	61%	73	79.5%	20.5	65.7%	0	1	10
Raleigh	79,220	12,340	51%	799	52.6%	20.2	48.2%	2	2	30
Randolph	28,262	4,356	55%	290	67.2%	20.2	57.6%	2	4	47
Ritchie	10,343	1,626	51%	123	72.4%	21.0	60.4%	0	2	80
Roane	15,446	2,554	62%	142	55%	20.4	51.3%	2	12	56
Taylor	16,089	2,450	51%	149	60.4%	21.2	57.7%	0	0	8
Upshur	23,404	3,825	56%	230	53.9%	20.6	51.5%	6	16	34
Webster	9,719	1,577	72%	116	58.6%	18.6	44.8%	2	3	23
Wirt	5,873	967	58%	76	88.2%	19.8	59.7%	2	3	17
Wyoming	25,708	4,161	60%	247	55.5%	20.2	49.9%	0	2	8
Total Service Area	401,222	64,138	58%	4162	60.6%	20.3	53.4%	32	91	1030
West Virginia	1,819,777			18,418	11,696²	20.7²	61.5%			1,601

¹ West Virginia College Going Rates by County and High School – Fall 2010, WVHEPC

² ACT statistics <http://www.act.org/news/data/10/states.html>

³ HEPC <http://wveis.k12.wv.us/nclb/pub/rpt0910/pickreportcard.cfm>

Student/Faculty Ratios¹

Term	FTE Students	FTE Faculty	FTE Student/Faculty Ratio
Fall 2005	1,277	61	21:1
Fall 2006	1,218	59	21:1
Fall 2007	1,207	67	18:1
Fall 2008	1,262	70	18:1
Fall 2009	1356	74	18:1
Fall 2010	1468	79	19:1
Fall 2011	1412	80	18:1

¹ Ratios computed by Student FTE (student total credit hours produced / 15) / Faculty FTE (full-time faculty + 1/3 of part-time faculty)

Full-Time Instructional Faculty by Academic Rank

	Professor		Associate Professor		Assistant Professor		Instructor		Lecturer, Graduate Assistant & Other		
Term	#	%	#	%	#	%	#	%	#	%	Total
Fall 2005	8	15%	14	27%	16	31%	14	27%	0	2%	52
Fall 2006	8	16%	15	29%	21	41%	7	14%	0	0%	51
Fall 2007	9	16%	16	28%	20	35%	10	18%	2	4%	57
Fall 2008	8	13%	16	27%	20	33%	14	24%	2	3%	60
Fall 2009	9	15%	16	27%	22	37%	13	21%	0	0%	60
Fall 2010	10	15%	15	22%	24	36%	18	27%	0	0%	67
Fall 2011	10	15%	18	26%	28	41%	12	18%	0	0%	68

Full-Time Instructional Faculty by Tenure Status

	Professor			Associate Professor			Assistant Professor			Instructor			Lecturer, Graduate Assistant & Other			Total		
Term	#	Tenured	%	#	Tenured	%	#	Tenured	%	#	Tenured	%	#	Tenured	%	#	Tenured	%
Fall 2006	8	8	100%	15	11	73%	21	2	10%	7	0	0%	0	0	0%	51	21	41%
Fall 2007	9	9	100%	16	10	63%	20	2	10%	10	0	0%	2	0	0%	57	21	37%
Fall 2008	8	8	100%	16	10	63%	20	2	10%	14	0	0%	2	0	0%	60	20	33%
Fall 2009	9	9	100%	16	11	69%	22	1	5%	13	0	0%	0	0	0%	60	21	35%
Fall 2010	10	10	100%	15	14	93%	24	1	4%	18	0	0%	0	0	0%	67	25	37%
Fall 2011	10	10	100%	18	17	94%	28	2	7%	12	0	0%	0	0	0%	68	29	43%

Source: Faculty and Staff Characteristics – WVHEPC. Data for 2011-12 reflects submission information

Full-Time Instructional Faculty by Highest Degree Held

Term	Doctoral		Masters		First Professional		Bachelors		Other		Total
	#	%	#	%	#	%	#	%	#	%	
Fall 2006	29	57%	20	39%	0	0%	2	4%	0	0%	51
Fall 2007	32	56%	24	42%	0	0%	1	2%	0	0%	57
Fall 2008	31	52%	28	47%	0	0%	1	2%	0	0%	60
Fall 2009	32	53%	27	45%	0	0%	1	2%	0	0%	60
Fall 2010	32	48%	31	46%	1	1%	3	5%	0	0%	67
Fall 2011	37	54%	28	41%	1	1%	2	3%	0	0%	68

Part-Time Instructional Faculty by Highest Degree Held

Term	Doctoral		Masters		First Professional		Bachelors		Other		Total
	#	%	#	%	#	%	#	%	#	%	
Fall 2006	1	4%	19	76%	1	4%	4	16%	0	0%	25
Fall 2007	4	15%	18	67%	1	4%	3	11%	0	0%	26
Fall 2008	4	17%	14	58%	2	8%	4	17%	0	0%	24
Fall 2009	4	10%	25	61%	0	0%	9	22%	3	7%	41
Fall 2010	1	3%	25	69%	4	11%	4	11%	2	6%	36
Fall 2011	1	2%	24	52%	5	11%	6	13%	10	22%	46

Source: Faculty and Staff Characteristics – WVHEPC. Data for 2011-12 reflects submission information.

Full-Time Instructional Faculty by Gender

Term	Male		Female		Total Number
	Number	Percentage	Number	Percentage	
Fall 2006	29	57%	22	43%	51
Fall 2007	36	63%	21	37%	57
Fall 2008	36	60%	24	40%	60
Fall 2009	37	62%	23	38%	60
Fall 2010	45	67%	22	33%	67
Fall 2011	46	68%	22	32%	68

Source: Faculty and Staff Characteristics – WVHEPC. Data for 2011-12 reflects submission information.

Full-Time Instructional Faculty by Ethnicity

Term	White, Non-Hispanic		Black, Non-Hispanic		Hispanic		Asian or Pacific Islander		American Indian or Alaskan Native		Total	% Minority
	#	%	#	%	#	%	#	%	#	%		
Fall 2006	50	98.0%	0	0.0%	0	0.0%	1	2.0%	0	0.0%	51	2.0%
Fall 2007	55	96.5%	0	0.0%	0	0.0%	2	3.5%	0	0.0%	57	3.5%
Fall 2008	57	95.0%	0	0.0%	1	1.7%	2	3.3%	0	0.0%	60	5.0%
Fall 2009	58	97.0%	0	0.0%	1	1.7%	1	1.7%	0	0.0%	60	3.3%
Fall 2010	63	94.3%	1	1.49%	1	1.49%	2	2.99%	0	0.0%	67	6.0%
Fall 2011	65	95.6%	1	1.47%	1	1.47%	1	1.47%	0	0.0%	68	4.0%

Source: Faculty and Staff Characteristics – WVHEPC. Data for 2011-12 reflects submission information.

Full-Time Instructional Faculty - Average Nine-Month Base Salary*

	Professor		Associate Professor		Assistant Professor		Instructor		Lecturer, Graduate Assistant & Other			
Term	#	Salary	#	Salary	#	Salary	#	Salary	#	Salary	Total	Average Salary
Fall 2006	8	\$65,199	15	\$55,038	21	\$43,747	7	\$34,318	0	\$0	51	\$49,139
Fall 2007	9	\$64,054	16	\$55,606	20	\$44,495	10	\$36,754	2	\$31,907	57	\$48,903
Fall 2008	8	\$65,885	16	\$58,216	20	\$46,100	14	\$35,203	2	\$33,243	60	\$48,997
Fall 2009	9	\$64,608	16	\$56,851	22	\$43,158	13	\$35,587	0	\$0	60	\$48,367
Fall 2010	10	\$65,093	15	\$58,224	24	\$45,566	18	\$37,858	0	\$0	67	\$49,244
Fall 2011	10	\$69,249	18	\$60,610	28	\$48,367	12	\$42,015	0	\$0	68	\$53,558

*Data does not include pay for extra or extended assignments.

Source: Faculty and Staff Characteristics – WVHEPC. Data for 2009 & 2010 reflects submission information.

Annual Tuition Comparisons Fall 2011

Institution Name	In-State Tuition	Out-of-State Tuition	Metro Rate	Room & Board
Bluefield State College	\$4,908	\$9,456	\$7,176	NA
Concord University	\$5,446	\$12,100	NA	\$7,240
Fairmont State University	\$5,326	\$11,230	NA	\$7,132
Glenville State College	\$5,352	\$12,720	\$8,832	\$7,900
Shepherd University	\$5,554	\$14,418	NA	\$8,130
West Liberty University	\$5,226	\$13,140	\$10,500	\$7,710
West Virginia State University	\$5,038	\$11,778	\$9,192	\$7,500
Average	\$5,264	\$12,120	\$8,925	\$7,602

Semester Tuition and Fees 2005-2011

	2005-06	2006-07	2007-08	2008-09	2009-10	2010-11	2011-12
Resident	\$1,814	\$1,941	\$2,087	\$2,243	\$2,444	\$2,444	\$2,676
Non-Resident	\$4,320	\$4,647	\$4,995	\$5,369	\$5,851	\$6,000	\$6,360
Metro Rate	NA	NA	NA	\$3,700	\$4,032	\$4,116	\$4,416

Source: College Web sites

Revenues Summarized¹

	2008-09	2009-10
Operating Revenues:		
Tuition and fees	\$5,964,828	\$6,808,393
Government Contracts and Grants	\$3,646,913	\$4,352,680
Private gifts, grants, and contracts	\$1,305,359	\$944,304
Sales and services of educational activities	\$924,789	\$1,196,469
Sales and services of auxiliary enterprises	\$4,273,901	\$4,572,163
Other sources	\$339,931	\$567,703
Total Operating Revenues	\$16,455,721	\$18,441,712
Non-Operating Revenues:		
Government Appropriations	\$6,739,617	\$6,051,935
Federal PELL Grants	\$2,347,617	\$3,281,699
Income from investments	\$74,394	\$28,994
Other Sources	\$201,132	
Total Non-Operating Revenues	\$9,362,760	\$9,362,628
Other Capital Proceeds from Commission	\$344,714	\$406,191
Total revenues	\$26,163,195	\$28,210,531

¹See GSC Audited Financial Statements for Full Revenue Reports

Educational and General (E&G) Expenditures Summarized¹

	2008-09	2009-10
Operating Expenses:		
Instruction	\$6,390,612	\$6,693,360
Academic Support	\$990,679	\$988,246
Student Services	\$1,678,862	\$1,831,239
General Institutional Support	\$2,333,781	\$4,421,298
Operation and Maintenance of Plant	\$2,218,547	\$2,575,919
Scholarships and Aid	\$5,865,181	\$7,083,054
Auxiliary Enterprises	\$4,091,143	\$4,340,450
Depreciation	\$1,464,231	\$1,465,842
Fees Assessed by Policy Commission	\$61,125	\$65,850
Total Operating Expenses	\$25,094,161	\$29,465,258
Non-Operating Expenses:		
Interest on Indebtedness	\$644,506	\$626,332
Other	\$15,563	\$17,602
Total Non-Operating Expenses	\$660,069	\$643,934
Total Expenditures	\$25,754,230	\$30,109,192

¹See GSC Audited Financial Statements for Full Expenditure Reports

Financial Aid Summary
2010-2011
First-Time Full-Time Freshmen

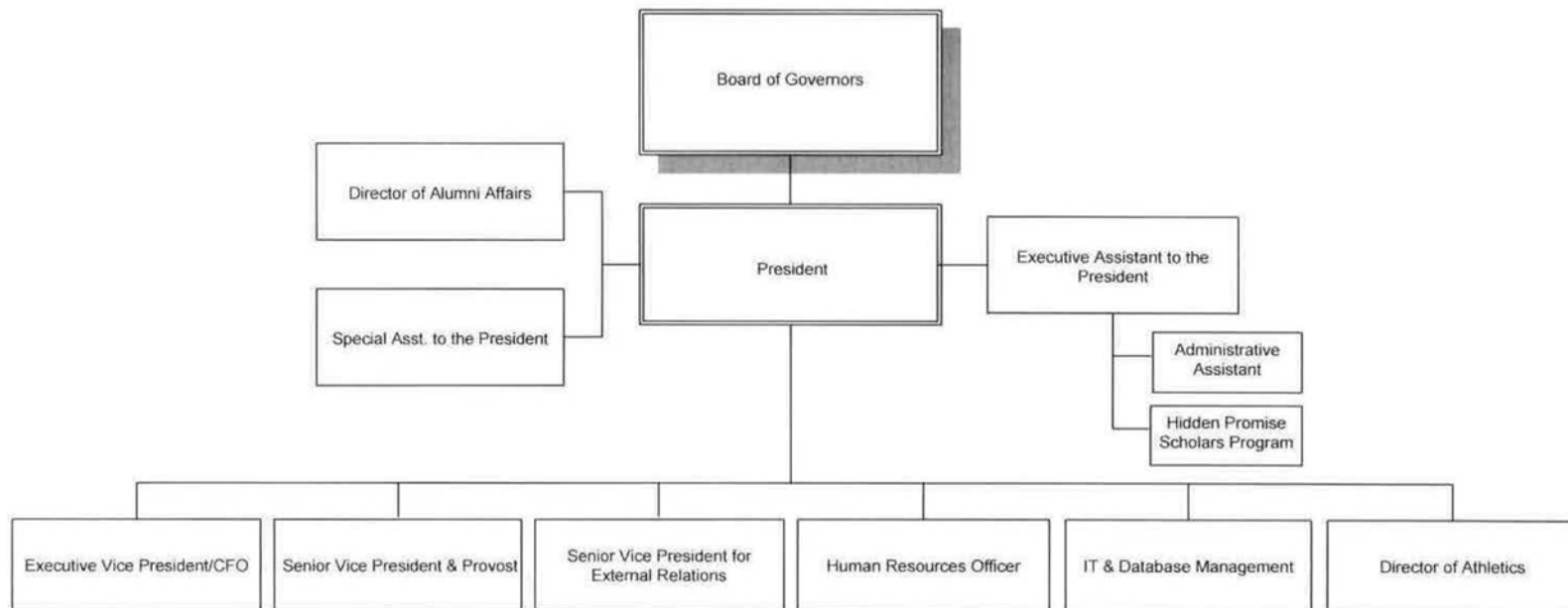
Applied for Financial Aid	296
Determined to have Financial need	263
Awarded Financial Aid	261
Average Financial Package	\$11,227

**Financial Aid
Processed**

	2008-2009	2009-2010	2010-2011
All types of Aid	\$7,028,082	\$8,221,018	\$9,759,269
Loans Processed	\$5,995,410	\$6,706,221	\$7,279,348
Total	\$13,023,492	\$14,927,239	\$17,038,617



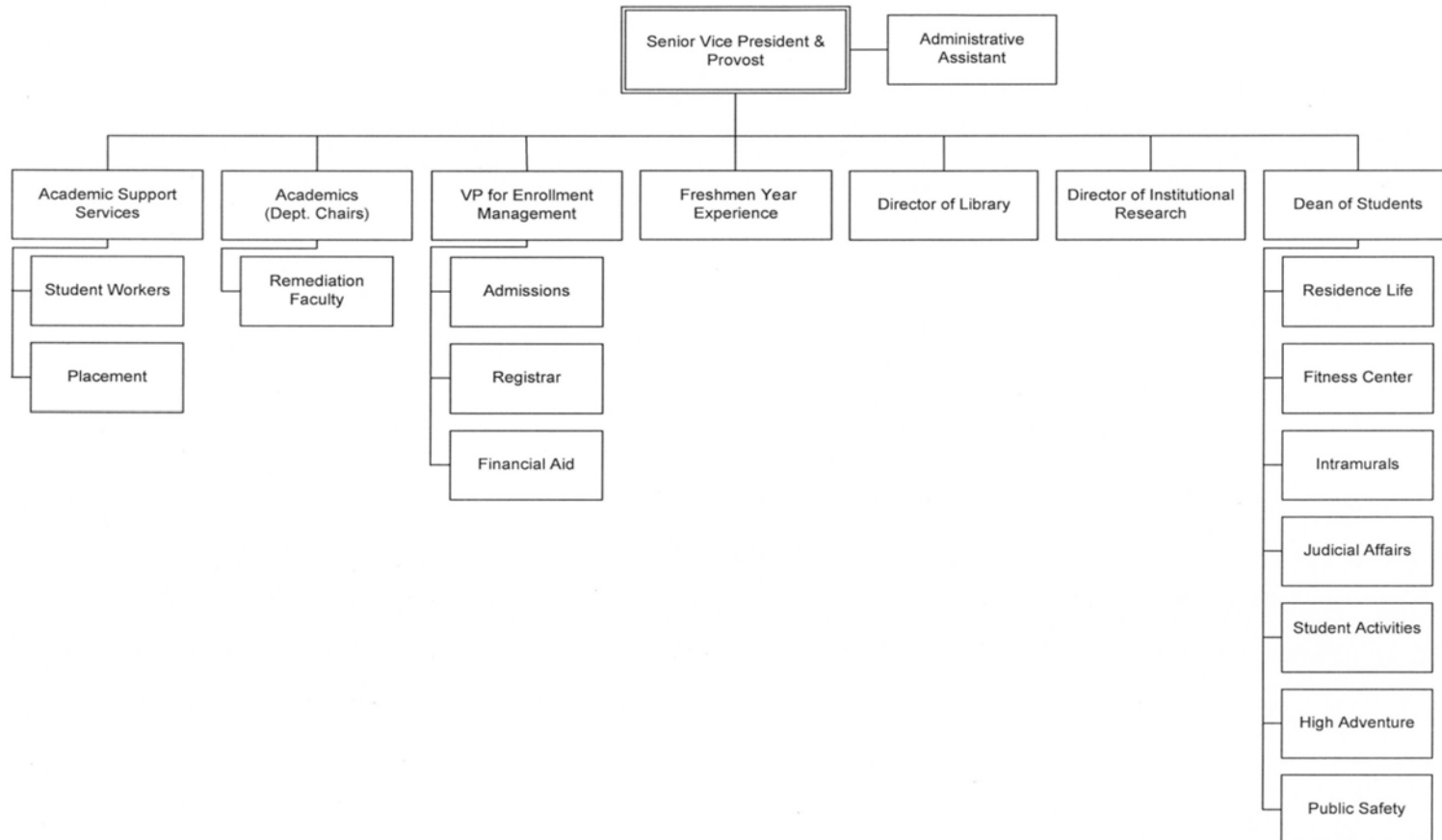
GLENVILLE STATE COLLEGE
ORGANIZATIONAL CHART
2011-2012



Updated 11/08/11



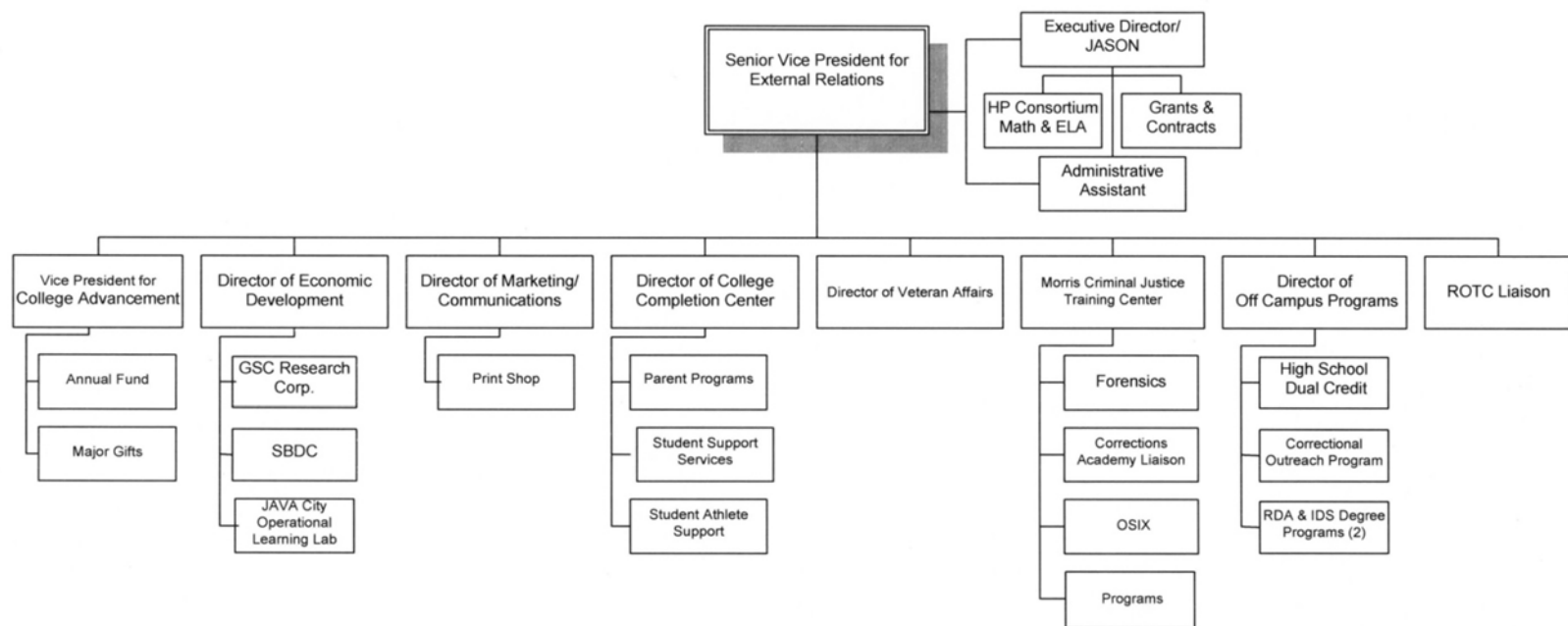
GLENVILLE STATE COLLEGE
ORGANIZATIONAL CHART
Senior Vice President & Provost
2011-2012



Updated 11/08/11



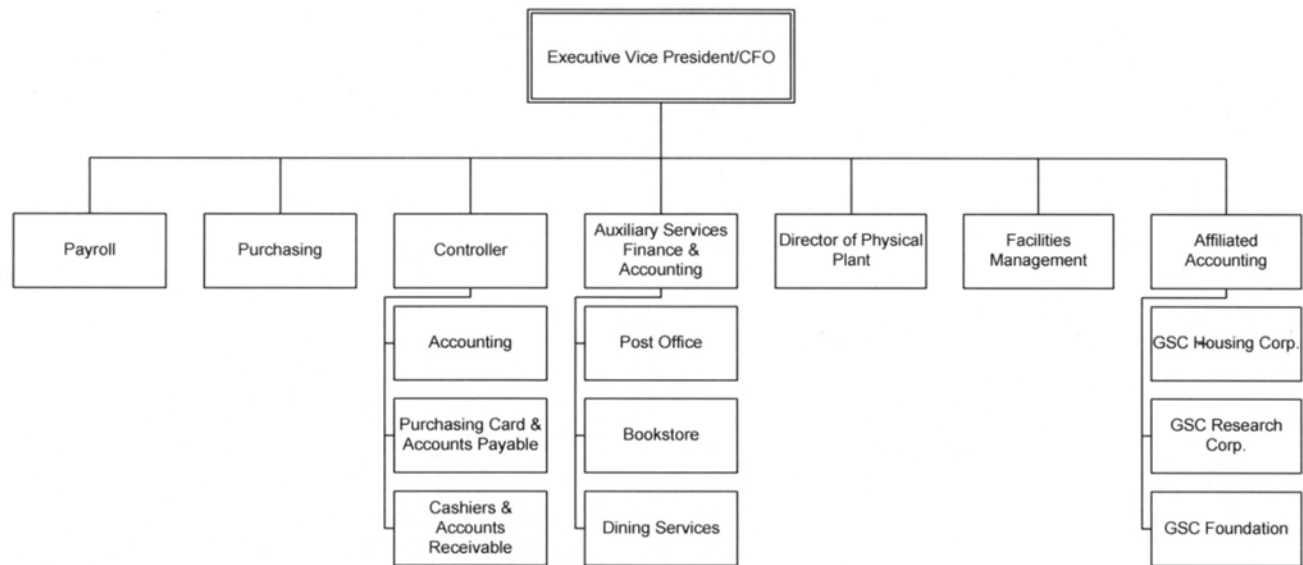
GLENVILLE STATE COLLEGE
ORGANIZATIONAL CHART
Senior Vice President for
External Relations
2011-2012



Updated 11/18/11



GLENVILLE STATE COLLEGE
ORGANIZATIONAL CHART
Executive Vice President of Finance/CFO
2011-2012



Updated 11/08/11

Committee Membership – 2011-2012

Academic Appeals

Ann Reed, Chair
Michael Curtis
Art DeMatteo
Rico Gazal
David Lewis
Jonathan Minton
Jared Wilson
Bill Bonnett (alternate)
Alison Witte (alternate)
Ann Reed, Adm. Liaison

Academic Policy

Kevin Evans, Chair
Gregory Crounce
Teresa Dody
Karen Griffith
Matthew Groner
Megan-Lynnette Rollins
John Taylor
Kelly Treece
Milan Vavrek
Nancy Zane
John Peek, Adm. Liaison

Assessment Committee

Brian Perkins, Chair
Chuck Batson
Neal Benson
Candace Butler
Ross Conover
Shara Curry
Teresa Dody
Matthew Groner
Nicole Himes
J. Morgan
Mike Smith
John Peek, Adm. Liaison

Athletic Committee

Janet Bailey, Chair
Mary Alltop
Duane Chapman
Olivia Ferrell
Mandy Frymier
Bob Hardman
Josh Jenkins
Nathan Lilly
Ida Mills
Sungick Min
Cam Perry
Shelly Ratliff
Jim Tatman
Kyle Warner
Janet Bailey, Adm. Liaison

College Leadership Council

John Peek, Chair
David O'Dell, Vice Chair
Cody Baber
Janet Bailey
Lloyd Bone
Wayne deRosset
Cinda Echard
Denise Ellyson
Kevin Evans
Bob Hardman
Shane Lehman
Ann Reed
Jim Tatman
Ed Wood

College Tenure/Promotion

Larry Baker, Chair
Cinda Echard
Mike Smith
John Taylor
Milan Vavrek
Joe Evans (alternate)

Commencement/Convocation

John Peek, Chair
Jerry Burkhammer
Wayne deRosset
Denise Ellyson
Lois Miller
Teresa Sterns
Joe Wilmoth
David Millard, Adm. Liaison

Curriculum Committee

Joe Evans, Chair
Kevin Cain, Vice Chair
Chuck Batson
Lloyd Bone
Liza Brenner
Wayne deRosset
Denise Ellyson
Matthew Groner
Sherry Jones
Gary Morris
Quentin Murphy
Travis Nesbitt
Mike Smith
Devan Snyder
Milan Vavrek
Dennis Wemm
John Peek, Adm. Liaison

Diversity Committee

John Peek, Chair, Adm. Liaison
Jerry Burkhammer
Lendon Childress
Bryan Groves
Dwight Heaster
Andrew Lewis

Enrollment Management

Duane Chapman, Chair
Alex Amick
Gary Arbogast
Janet Bailey
Nate Bolin
Jerry Burkhammer
Adrian Duelley
Matthew Groner
Karen Lay
Deb Nagy
Paul Peck
Jason Phares
Rebecca Radcliff
Rachel Stewart
John Peek, Adm. Liaison

Faculty Development

Milan Vavrek, Chair
Art DeMatteo
David Lewis
Jonathan Minton
Bradley Reed
Jon Staton
Jared Wilson
Alison Witte
John Peek, Adm. Liaison

Faculty Senate

David O' Dell, Chair/President
Larry Baker
Liza Brenner
Greg Cronic
Art DeMatteo
Cinda Echard
Kevin Evans
George Hoshell
Ida Mills
Jonathan Minton
J. Morgan
Paul Peck
Brian Perkins
Shelly Ratliff
Dennis Wemm
Jared Wilson
Joseph Wood
John Peek, Adm. Liaison

Financial Aid Appeals

Karen Lay, Chair, Adm. Liaison
Glenn Abraham
Alan Daniel
Ashley Haddox
Ann Reed
Robin Schimmel

Homecoming

Jerry Burkhammer, Chair
SGA Officers
Janet Bailey
Roxanne Bright
Andrew Lewis
Deb Nagy
Tommy Ratliff

Institutional Review Board

Ida Mills, Chair
Alan Daniel
Sara Sawyer
Tammy Stewart
John Taylor
John Peek, Adm. Liaison

International Committee

John Peek, Chair
Megan Gibbons
Sungick Min
Jon Minton
Sarah Morrison
Boris Nimcevic
Aesha Peters
Rebecca Radcliff
Daniel Sambu
Ed Wood
Duane Chapman, Adm. Liaison

Judicial Council

Larry Baker
 Lloyd Bone
 Seth Canfield
 Katie Morris
 Travis Nesbitt
 Devan Snyder
 Connie Stout

Library Advisory Committee

Melissa Gish, Chair
 Shara Curry
 Chelsea Dorsey
 Jane Friedmann
 Jacob Friendly
 Ashley Haddox
 Cheryl McKinney
 John McKinney
 Rick Sypolt
 Gail Westbrook
 Ed Wood
 John Peek, Admin. Liaison

Retention Committee

Duane Chapman, Chair. Adm. Liaison
 Duane Chapman, Chair
 Cody Baber
 Bill Bonnett
 Lendon Childress
 Mandy Frymier
 Rico Gazal
 Matthew Groner
 Ellen Minney
 J Morgan
 Daniel Sambu

Scholarship Committee

Karen Lay, Chair, Adm. Liaison
 Lloyd Bone
 Duane Chapman
 Cinda Echard
 Denny Pounds
 Ann Reed

Staff Council

Jim Tatman, President
 Mary Alltop
 Jenny Boggs
 Carla Conley
 Brittany Frymier
 Brian Hipp
 Debi Jenkins
 Lois Miller
 Jason Phares
 Ann Reed
 Sheri Skidmore
 Gail Westbrook
 Krystal Smith, Admin. Liaison

Student Government Association

Cody Baber, President
 Katrina Adkins
 Karen Griffin
 Marc Jones
 Miranda Lively
 Megan-Lynnette Rollins
 Sarah Morrison
 Travis Nesbitt
 Megan Prater
 Jerry Burkhammer, Admin. Liaison

Student Life

, Chair
 Larry Baker
 Tara Cosco
 Nicole Himes
 Andrew Lewis
 Quentin James Murphy
 Travis Nesbitt
 David O'Dell
 Megan Prater
 Devan Snyder
 Connie Stout
 Joseph Wood
 Jerry Burkhammer, Adm. Liaison

Textbook Affordability

John Peek, Adm. Liaison & Chair
 Jerry Burkhammer
 Dwight Heaster
 George Hoshell
 Diana Milam
 Staci Moore
 Travis Nesbitt
 Fred Walborn
 Gail Westbrook

