



GLENVILLE  
STATE COLLEGE

# Fact Book

# 2012



## Table of Contents

Enrollment Trends	Page
<b>Fall</b>	
Fall Enrollment by Class	1
First-Time Freshmen	2
First-Time Freshmen – Baccalaureate Program	3
First-Time Freshmen – Associate Program	4
New Transfers	5
New Transfers – Baccalaureate Program Enrollment	6
New Transfers – Associate Program Enrollment	6
Total Headcount & FTE by Course Location	7
Total Headcount & FTE by Online Courses	7
Fall Enrollment Headcount Comparison	8
Fall Enrollment FTE Comparison	8
Applicants Accepted and Enrolled – All students	9
Applicants Accepted and Enrolled – First-Time Freshmen	10
Applicants Accepted and Enrolled – Transfer Students	11
Applicants Accepted and Enrolled – Re-Admit Students	12
<b>Spring</b>	
Spring Enrollment by Class	13
FTE by Spring Semesters	13
New First-Time Freshmen for Spring	14
New First-Time Freshmen for Spring – Baccalaureate Program	15
New First-Time Freshmen for Spring – Associate Program	15
New Transfers for Spring	16
New Transfers for Spring – Baccalaureate Program	17
New Transfers for Spring – Associate Program	17
<b>Summer</b>	
Summer Enrollment by Class	18
FTE by Summer Semesters	18

Retention  
Rates

**Fall to Fall**

Retention of First-Time, Full-Time Students , Fall – Fall	19
Retention of All Students – Degree & Non-Degree Seeking, Fall – Fall	19
Full-Time Students Retention Baccalaureate Program, Fall – Fall	20
Full-Time Students Retention Associate Program, Fall – Fall	20

**Fall to Spring**

Retention of First-Time, Full-Time Students , Fall – Spring	21
Retention of All Students – Degree & Non-Degree Seeking, Fall – Spring	21
Full-Time Students Retention Baccalaureate Program, Fall – Spring	22
Full-Time Students Retention Associate Program, Fall – Spring	22

**Spring to Fall**

Retention of First-Time, Full-Time Students – Spring Admits, Spring – Fall	23
Retention of All Students – Degree & Non-Degree Seeking, Spring – Fall	23
Full-Time Students Retention Baccalaureate Program, Spring – Fall	24
Full-Time Students Retention Associate Program, Spring – Fall	24

**Graduation**

Six Year Graduation Rates (First-Time, Full-Time)	25
Five Year Graduation Rates (First-Time, Full-Time)	25
Four Year Graduation Rates (First-Time, Full-Time)	25
Six Year Graduation Rates (received Athletic Related Financial Aid )	26

Program  
Profile

Full-Time Enrollment by Degree Program	27
Part-Time Enrollment by Degree Program	28
Enrollment by Academic Program	29
Graduation by Academic Program	32
Degrees Conferred	35

## Student Profile

Student Profile Summary	36
Enrollment by Gender	37
Enrollment by State of Residence	38
Enrollment by Ethnicity	39
Average Age of All Students	40
Students Age 25 and Older – All	40
Students Age 25 and Older – All Freshmen	41
Students Age 25 and Older – Part-Time	41
ACT Scores and SAT Scores – Fall	42
ACT Scores and SAT Scores – Spring Admits	43
Grade Point Averages – Semester	44
Grade Point Averages – Cumulative	44
Enrollment in One or More Developmental Courses - Fall	45
Enrollment in One or More Developmental Courses –Spring Admits	45
West Virginia County Enrollment – Top 25 by number Enrolled	46
West Virginia County Enrollment – by County	47
Residence Hall Occupancy Rates	49

## Faculty Profile

Student/Faculty Ratios	50
Full-Time Faculty by Academic Rank	51
Full-Time Faculty by Tenure Status	51
Full-Time Faculty by Highest Degree Held	52
Part-Time Faculty by Highest Degree Held	53
Full-Time Faculty by Gender	54
Full-Time Faculty by Ethnicity	55
Full Time Instructional Faculty – Average Nine-Month Salary	56

## Financial

Semester Tuition and Fees	57
Annual Tuition Comparisons	57

Revenue Summarized	58
Educational and General (E&G) Expenditures Summarized	59
Financial Aid Summary, First-Time Freshman	60
Financial Aid Processed	60
 Organizational Charts	
Board of Governors, President, and Executive Staff	61
Academic and Student Affairs	62
External Relations	63
Business & Finance	64
 Committees	
Academic Appeals, Academic Policy, Assessment, Athletic, College Leadership, College Tenure/Promotion, Commencement/Convocation, Curriculum	65
Diversity, Enrollment Management, Faculty Development, Faculty Senate, Financial Aid Appeals, Homecoming, International Review, International	68
Judicial Council, Library Advisory ,Retention, Scholarship, Staff Council, Student Government Association, Student Life, Textbook Affordability	69

	Fall reporting posted in October 2012 to
IPEDS	Integrated Postsecondary Education Data System
HEPC	West Virginia Higher Education Policy Commission

---

### Fall Enrollment by Class

Class	2006	2007	2008	2009	2010	2011	2012
Freshman	434	446	487	569	708	682	680
Sophomore	216	182	204	180	247	264	225
Junior	207	181	165	161	157	226	199
Senior	303	333	331	323	331	308	334
Non-Degree <sup>1</sup>	221	299	256	488	385	377	460
<b>Total Headcount</b>	<b>1381</b>	<b>1441</b>	<b>1443</b>	<b>1721</b>	<b>1828</b>	<b>1857</b>	<b>1898</b>

---

### Percentage of Fall Enrollment by Class

Class	2006	2007	2008	2009	2010	2011	2012
Freshman	31%	31%	34%	33%	39%	37%	36%
Sophomore	16%	13%	14%	10%	13%	14%	12%
Junior	15%	13%	11%	9%	9%	12%	10%
Senior	22%	23%	23%	19%	18%	17%	18%
Non-Degree <sup>1</sup>	16%	20%	18%	28%	21%	20%	24%
<b>Total Headcount</b>	<b>1381</b>	<b>1441</b>	<b>1443</b>	<b>1721</b>	<b>1828</b>	<b>1857</b>	<b>1898</b>

<sup>1</sup> Students not seeking a degree and high school early entrance students.

### First-Time Freshmen

Term	Enrolled Full-Time	Male	Female	Enrolled Part-Time	Male	Female	Total Enrolled
Fall 2006	267	140	127	1	1	0	268
Fall 2007	285	150	135	6	3	3	291
Fall 2008	302	175	127	1	0	1	303
Fall 2009	329	175	154	2	0	2	331
Fall 2010	313	172	141	103 <sup>1</sup>	93	10	416
Fall 2011	284	182	102	71	60	11	355
Fall 2012	339	224	115	61	55	6	400

<sup>1</sup> New off-site associate degree programs at Federal Corrections Institution (FCI) Gilmer and for West Virginia Department of Military Affairs and Public Safety (DMAPS).

### First-Time Freshmen - Baccalaureate Program

Term	Enrolled Full-Time	Male	Female	Enrolled Part-Time	Male	Female	Total Enrolled
Fall 2006	248	127	121	1	1	0	249
Fall 2007	269	139	130	6	3	3	275
Fall 2008	278	158	120	1	0	1	279
Fall 2009	291	155	136	0	0	0	291
Fall 2010 <sup>1</sup>	149	85	77	1	0	1	150
Fall 2011	155	91	64	2	2	0	157
Fall 2012	169	112	57	1	0	1	170

<sup>1</sup>Adjusted ACT and SAT requirements limiting number of students admitted to a baccalaureate program.

### First-Time Freshmen - Associate Program

Term	Enrolled Full-Time	Male	Female	Enrolled Part-Time	Male	Female	Total Enrolled
Fall 2006	19	13	6	1	0	0	20
Fall 2007	16	11	5	0	0	0	16
Fall 2008	24	17	7	0	0	0	24
Fall 2009	38	20	18	2	0	2	40
Fall 2010 <sup>1</sup>	164	87	64	102	93	9	266
Fall 2011	129	91	38	69	58	11	198
Fall 2012	170	112	58	60	55	5	230

<sup>1</sup> Adjusted ACT and SAT requirements limiting number of students admitted to a baccalaureate program.

### New Transfers for Fall

Term	Enrolled Full-Time	Male	Female	Enrolled Part-Time	Male	Female	Total Enrolled
Fall 2006	55	32	23	2	1	1	57
Fall 2007	79	49	30	2	2	0	81
Fall 2008	83	50	33	7	4	3	90
Fall 2009	78	50	28	5	2	3	83
Fall 2010	104	54	50	56 <sup>1</sup>	28	28	160
Fall 2011	101	60	41	51	29	22	152
Fall 2012	92	54	38	28	24	4	120

<sup>1</sup>West Virginia Department of Military Affairs and Public Safety (DMAPS) transfers into Associate Criminal Justice Program.

### New Transfers - Baccalaureate Program

Term	Enrolled Full-Time	Male	Female	Enrolled Part-Time	Male	Female	Total Enrolled
Fall 2006	51	28	23	2	1	1	53
Fall 2007	77	47	30	2	0	2	79
Fall 2008	77	44	33	7	4	3	84
Fall 2009	70	46	24	5	2	3	75
Fall 2010	70	38	32	4	2	2	74
Fall 2011	64	38	26	5	0	5	69
Fall 2012	64	37	27	3	1	2	67

### New Transfers - Associate Program

Term	Enrolled Full-Time	Male	Female	Enrolled Part-Time	Male	Female	Total Enrolled
Fall 2006	4	4	0	0	0	0	4
Fall 2007	2	2	0	0	0	0	2
Fall 2008	6	6	0	0	0	0	6
Fall 2009	8	4	4	0	0	0	8
Fall 2010 <sup>1</sup>	34	16	18	52	26	26	86
Fall 2011	37	22	15	46	29	17	83
Fall 2012	28	17	11	25	23	2	53

<sup>1</sup>West Virginia Department of Military Affairs and Public Safety (DMAPS) transfers into Associate Criminal Justice Program.

## Enrollment by Course Location

Location	Fall 2008		Fall 2009		Fall 2010		Fall 2011		Fall 2012	
	Headcount	FTE	Headcount	FTE	Headcount	FTE	Headcount	FTE	Headcount	FTE
Glenville Campus	1173	1130	1255	1114	1309	1161	1503	1186	1476	1176
FCI Gilmer	162	43	191	58	203	85	196	69	183	64
New River <sup>1</sup>	14	7	22	9	15	5	11	5	13	6
High Schools	91	24	158	56	185	75	152	42	200	86

## Enrollment by Online Courses

Location	Fall 2008		Fall 2009		Fall 2010		Fall 2011		Fall 2012	
	Headcount	FTE	Headcount	FTE	Headcount	FTE	Headcount	FTE	Headcount	FTE
Glenville Campus	261	52	336	88	449	105	415	109	440	120
DMAPS <sup>2</sup>	NA	NA	137	42	131	63	271	65	93	45
<b>Total</b>	261	52	473	130	580	168	686	174	533	165

<sup>1</sup> 2 + 2 Education Program.

<sup>2</sup> West Virginia Department of Military Affairs

### Fall Enrollment Headcount Comparison

Institution Name	Fall 2006	Fall 2007	Fall 2008	Fall 2009	Fall 2010	Fall 2011	Fall 2012
Bluefield State College	1923	1804	1943	2058	2101	1929	1935
Concord University	2787	2735	2810	2924	2919	2797	2834
Fairmont State University	4611	4464	4554	4572	4708	4617	4451
<b>Glenville State College</b>	<b>1381</b>	<b>1441</b>	<b>1443</b>	<b>1721</b>	<b>1828</b>	<b>1857</b>	<b>1898</b>
Shepherd University	4091	4119	4283	4370	4336	4393	4326
West Liberty State College	2268	2405	2508	2645	2738	2787	2804
West Virginia State University	3502	3218	3110	3971	3239	2827	2644

### Fall Enrollment FTE Comparison

Institution Name	Fall 2009	Fall 2010	Fall 2011	Fall 2012
Bluefield State College	1751	1757	1660	1717
Concord University	2771	2740	2723	2621
Fairmont State University	4036	4125	4023	3939
<b>Glenville State College</b>	<b>1356</b>	<b>1468</b>	<b>1412</b>	<b>1445</b>
Shepherd University	3757	3786	3837	3774
West Liberty State College	2553	2644	2656	2672
West Virginia State University	2697	2475	2259	2108

### Applicants Accepted and Enrolled All Students

Term	Applicants	Male	Female	Number Accepted	Enrolled Full-Time	Male	Female	Enrolled Part-Time	Male	Female	Total Enrolled
Fall 2006	983	483	500	979	346	182	164	15	6	9	361
Fall 2007	1209	617	592	1166	385	209	176	25	5	20	410
Fall 2008	1227	729	498	1070	409	239	170	18	7	11	427
Fall 2009	1165	584	581	1092	446	246	200	11	3	8	457
Fall 2010	1347	696	651	1094	457	247	210	174	130	44	631
Fall 2011	1588	877	711	1345	425	256	169	130	92	38	555
Fall 2012	1568	888	680	1354	472	297	175	116	94	22	588

### Applicants Accepted and Enrolled Conversion Percentages

Term	Accepted to Applicants	Full-Time to Accepted	Part-Time to Accepted	Enrollment to Accepted
Fall 2006	99%	35%	2%	37%
Fall 2007	96%	33%	2%	35%
Fall 2008	87%	38%	2%	40%
Fall 2009	94%	41%	1%	42%
Fall 2010	81%	42%	16%	58%
Fall 2011	85%	31%	10%	41%
Fall 2012	86%	35%	8%	43%

### Applicants Accepted and Enrolled First-Time Freshmen

Term	Applicants	Male	Female	Number Accepted	Enrolled Full-Time	Male	Female	Enrolled Part-Time	Male	Female	Total Enrolled
Fall 2006	794	387	407	790	267	140	127	1	1	0	268
Fall 2007	964	498	466	948	285	150	135	6	3	3	291
Fall 2008	1021	615	406	864	302	175	127	1	0	1	303
Fall 2009	928	463	465	855	329	175	154	2	0	2	331
Fall 2010	1025	529	496	796	313	172	141	103	93	10	416
Fall 2011	1246	690	556	1023	284	182	102	71	60	11	355
Fall 2012	1218	696	522	1024	339	224	115	61	55	6	400

### Applicants Accepted and Enrolled Conversion Percentages First-Time Freshmen

Term	Accepted to Applicants	Full-Time to Accepted	Part-Time to Accepted	Enrollment to Accepted
Fall 2006	99%	34%	0%	34%
Fall 2007	98%	30%	1%	31%
Fall 2008	85%	35%	0%	35%
Fall 2009	92%	38%	0%	39%
Fall 2010	78%	39%	13%	52%
Fall 2011	82%	28%	7%	35%
Fall 2012	84%	33%	6%	39%

### Applicants Accepted and Enrolled New Transfer Students

Term	Applicants	Male	Female	Number Accepted	Enrolled Full-Time	Male	Female	Enrolled Part-Time	Male	Female	Total Enrolled
Fall 2006	119	65	54	119	55	32	23	2	1	1	57
Fall 2007	168	92	76	168	79	49	30	2	0	2	81
Fall 2008	156	90	66	156	83	50	33	7	4	3	90
Fall 2009	167	87	80	167	78	50	28	5	2	3	83
Fall 2010	229	123	106	205	104	54	50	56 <sup>1</sup>	28	28	160 <sup>1</sup>
Fall 2011	255	147	108	236	101	60	41	51	29	22	152
Fall 2012	247	140	107	227	92	54	38	28	24	4	120

### Applicants Accepted and Enrolled Conversion Percentages New Transfer Students

Term	Accepted to Applicants	Full-Time to Accepted	Part-Time to Accepted	Enrollment to Accepted
Fall 2006	100%	46%	2%	48%
Fall 2007	100%	47%	1%	48%
Fall 2008	100%	53%	4%	58%
Fall 2009	100%	47%	3%	50%
Fall 2010	89%	51%	27%	78%
Fall 2011	93%	43%	22%	67%
Fall 2012	92%	41%	12%	53%

<sup>1</sup> Significant Fall 2010 increases reflects enrollment in new degree offerings and enrollment growth at Federal Corrections Institution (FCI) Gilmer and West Virginia Department of Military Affairs and Public Safety (DMAPS).

**Applicants Accepted and Enrolled  
Re-Admit Students**

<b>Term</b>	<b>Applicants</b>	<b>Male</b>	<b>Female</b>	<b>Number Accepted</b>	<b>Enrolled Full-Time</b>	<b>Male</b>	<b>Female</b>	<b>Enrolled Part-Time</b>	<b>Male</b>	<b>Female</b>	<b>Total Enrolled</b>
Fall 2006	70	31	39	70	24	10	14	12	4	8	36
Fall 2007	77	27	50	77	21	10	11	17	2	15	38
Fall 2008	50	24	26	50	24	11	10	10	3	7	34
Fall 2009	70	34	36	70	39	21	18	4	1	3	43
Fall 2010	93	44	49	93	40	21	19	15	9	6	55
Fall 2011	87	40	47	86	40	14	26	8	3	5	48
Fall 2012	103	52	51	103	41	19	22	27	15	12	68

---

### Spring Enrollment by Class

<b>Class</b>	<b>2007</b>	<b>2008</b>	<b>2009</b>	<b>2010</b>	<b>2011</b>	<b>2012</b>
Freshman	403	402	471	578	611	544
Sophomore	226	207	221	219	264	273
Junior	199	181	173	178	213	222
Senior	327	353	334	344	338	364
Non-Degree	96	97	108	190	160	155
<b>Total Headcount</b>	<b>1251</b>	<b>1240</b>	<b>1307</b>	<b>1509</b>	<b>1586</b>	<b>1558</b>

---

### FTE by Spring Semesters

<b>Term</b>	<b>2007</b>	<b>2008</b>	<b>2009</b>	<b>2010</b>	<b>2011</b>	<b>2012</b>
<b>Spring</b>	1079	1088	1163	1294	1340	1271

---

### New First-Time Freshmen for Spring

Term	Enrolled Full-Time	Male	Female	Enrolled Part-Time	Male	Female	Total Enrolled
Spring 2007	20	13	7	5	3	2	25
Spring 2008	24	14	10	4	1	3	28
Spring 2009	30	21	9	0	0	0	30
Spring 2010	33	18	15	3	1	2	36
Spring 2011	41	26	15	29	26	3	70
Spring 2012	22	11	11	49	39	10	71

### New First-Time Freshmen for Spring - Baccalaureate Program

Term	Enrolled Full-Time	Male	Female	Enrolled Part-Time	Male	Female	Total Enrolled
Spring 2007	18	12	6	3	2	1	21
Spring 2008	22	12	10	4	1	3	26
Spring 2009	22	17	5	0	0	0	22
Spring 2010	21	11	10	0	0	0	21
Spring 2011	13	7	6	12	10	2	25
Spring 2012	6	2	4	0	0	0	6

### New First-Time Freshmen for Spring – Associate Program

Term	Enrolled Full-Time	Male	Female	Enrolled Part-Time	Male	Female	Total Enrolled
Spring 2007	2	1	1	2	1	1	4
Spring 2008	14	10	4	0	0	0	14
Spring 2009	8	4	4	0	0	0	8
Spring 2010	12	7	5	2	0	2	14
Spring 2011	28	19	9	17	16	1	45
Spring 2012	16	9	7	49	39	10	65

---

### New Transfers for Spring

Term	Enrolled Full-Time	Male	Female	Enrolled Part-Time	Male	Female	Total Enrolled
Spring 2007	13	4	9	1	0	1	14
Spring 2008	25	9	16	3	2	1	28
Spring 2009	15	8	7	5	1	4	20
Spring 2010	32	24	8	1	1	0	33
Spring 2011	61	37	24	26	17	9	87
Spring 2012	39	24	15	30	26	4	69

### New Transfers for Spring - Baccalaureate Program

Term	Enrolled Full-Time	Male	Female	Enrolled Part-Time	Male	Female	Total Enrolled
Spring 2007	11	4	7	1	0	1	12
Spring 2008	24	9	15	3	2	1	27
Spring 2009	13	6	7	5	1	4	18
Spring 2010	26	22	4	1	1	0	27
Spring 2011	40	20	20	16	8	8	56
Spring 2012	14	7	7	2	0	2	16

### New Transfers for Spring - Associate Program

Term	Enrolled Full-Time	Male	Female	Enrolled Part-Time	Male	Female	Total Enrolled
Spring 2007	2	0	2	0	0	0	2
Spring 2008	1	0	1	0	0	0	1
Spring 2009	2	2	0	0	0	0	2
Spring 2010	6	2	4	0	0	0	6
Spring 2011	21	17	4	10	9	1	31
Spring 2012	25	17	8	23	22	1	48

---

### Summer Enrollment by Class

Class	2006	2007	2008	2009	2010	2011	2012
Freshman	75	32	44	161	201	188	162
Sophomore	44	37	75	72	115	113	107
Junior	54	52	83	60	58	82	65
Senior	116	122	126	115	125	146	142
Non-Degree	18	8	95	0	43	18	80
<b>Headcount Total</b>	<b>307</b>	<b>251</b>	<b>423</b>	<b>422</b>	<b>542</b>	<b>547</b>	<b>556</b>

---

### FTE by Summer Semesters

Term	2006	2007	2008	2009	2010	2011	2012
Summer	119	90	116	138	192	208	182

---

**Retention of First-Time, Full-Time Students**  
Fall to Fall

	2006 to 2007	2007 to 2008	2008 to 2009	2009 to 2010	2010 to 2011	2011 to 2012
<b>Bachelor's</b>	56%	56%	56%	58%	70% <sup>1</sup>	65%
<b>Associate's</b>	26%	50%	38%	55%	48%	36%
<b>Total</b>	54%	56%	55%	58%	59%	52%

---

**Retention of All Students**  
Fall to Fall

	2006 to 2007	2007 to 2008	2008 to 2009	2009 to 2010	2010 to 2011	2011 to 2012
<b>Degree Seeking</b>	57%	53%	56%	64%	50%	49%
<b>Degree and Non-Degree Seeking</b>	57%	53%	56%	53%	53%	48%

<sup>1</sup>Increased criteria – based associate degree placement.

---

**Full-Time Students - Baccalaureate Retention**  
Fall to Fall

	2006 - 2007	2007 - 2008	2008 - 2009	2009 - 2010	2010 - 2011	2011 - 2012
<b>First-Time Freshmen</b>	56%	56%	56%	58%	70%	65%
<b>All Freshmen</b>	50%	53%	63%	66%	68%	66%
<b>Sophomore</b>	68%	73%	71%	79%	82%	76%
<b>Junior</b>	75%	72%	78%	78%	84%	81%

---

**Full-Time Students - Associate Retention**  
Fall to Fall

	2006 - 2007	2007 - 2008	2008 - 2009	2009 - 2010	2010 - 2011	2011 - 2012
<b>First-Time Freshmen</b>	26%	50%	38%	55%	47%	36%
<b>All Freshmen</b>	19%	49%	45%	62%	46%	44%
<b>Sophomore</b>	55%	67%	71%	78%	69%	61%

<sup>1</sup>Increased criteria – based associate degree placement.

---

**Retention of First-Time, Full-Time Students**  
Fall to Spring

	2006 to 2007	2007 to 2008	2008 to 2009	2009 to 2010	2010 to 2011	2011 to 2012
<b>Bachelor's</b>	81%	80%	88%	83%	87%	83%
<b>Associate's</b>	84%	75%	79%	84%	75%	77%
<b>Total</b>	82%	80%	87%	83%	81%	80%

---

**Retention of All Students**  
Fall to Spring

	2006 to 2007	2007 to 2008	2008 to 2009	2009 to 2010	2010 to 2011	2011 to 2012
<b>Degree Seeking</b>	77%	75%	78%	81%	75%	78%
<b>Degree and Non-Degree Seeking</b>	57%	53%	56%	53%	53%	68%

---

**Full-Time Students - Baccalaureate Retention**  
Fall to Spring

	2006 - 2007	2007 - 2008	2008 - 2009	2009 - 2010	2010 - 2011	2011 - 2012
<b>First-Time Freshmen</b>	81%	80%	88%	83%	87%	83%
<b>All Freshmen</b>	79%	80%	90%	83%	83%	83%
<b>Sophomore</b>	83%	83%	85%	85%	90%	92%
<b>Junior</b>	88%	95%	92%	93%	90%	91%

---

**Full-Time Students - Associate Retention**  
Fall to Spring

	2006 - 2007	2007 - 2008	2008 - 2009	2009 - 2010	2010 - 2011	2011 - 2012
<b>First-Time Freshmen</b>	84%	75%	79%	84%	75%	77%
<b>All Freshmen</b>	71%	73%	80%	85%	73%	74%
<b>Sophomore</b>	79%	100%	85%	100%	95%	77%

---

**Retention of First-Time, Full-Time Students – Spring Admits**  
Spring to Fall

	<b>2007</b>	<b>2008</b>	<b>2009</b>	<b>2010</b>	<b>2011</b>	<b>2012</b>
<b>Bachelor's</b>	39%	52%	59%	57%	54%	67%
<b>Associate's</b>	50%	29%	50%	33%	57%	56%
<b>Total</b>	40%	51%	57%	48%	56%	59%

---

**Retention of All Students**  
Spring to Fall

	<b>2007</b>	<b>2008</b>	<b>2009</b>	<b>2010</b>	<b>2011</b>	<b>2012</b>
<b>Degree Seeking</b>	66%	41%	63%	69%	67%	64%
<b>Degree and Non-Degree Seeking</b>	66%	64%	63%	65%	65%	60%

---

**Full-Time Students - Baccalaureate Retention**  
Spring to Fall

	2007 - 2007	2008 - 2008	2009 - 2009	2010 - 2010	2011 - 2011	2012 - 2012
<b>All Freshmen</b>	62%	65%	65%	69%	72%	69%
<b>Sophomore</b>	69%	75%	77%	90%	88%	90%
<b>Junior</b>	82%	73%	77%	85%	93%	79%

---

**Full-Time Students - Associate Retention**  
Spring to Fall

	2007 - 2007	2008 - 2008	2009 - 2009	2010 - 2010	2011 - 2011	2012 - 2012
<b>All Freshmen</b>	33%	70%	44%	61%	55%	52%
<b>Sophomore</b>	59%	59%	55%	58%	70%	76%

---

### Six-Year Graduation Rates

Started and Completed at Same Institution

First-Time, Full-Time Students (Entering Year)						
	2001	2002	2003	2004	2005	2006
Glenville State College Baccalaureate	25%	26%	33%	28%	30%	31%
All WV State Colleges Baccalaureate Avg.	43%	45%	46%	45%	45%	45%

---

### Five-Year Graduation Rates

Started and Completed at Same Institution

First-Time, Full-Time Students (Entering Year)						
	2002	2003	2004	2005	2006	2007
Glenville State College	25%	26%	25%	24%	26%	25%

---

### Four-Year Graduation Rates

Started and Completed at Same Institution

First-Time, Full-Time Students (Entering Year)						
	2003	2004	2005	2006	2007	2008
Glenville State College	14%	26%	16%	18%	13%	11%

---

---

**Six-Year Graduation Rates**  
**Baccalaureate Students Receiving Athletic-Related Financial Aid (Entering Year)**

<b>Entering Year</b>	<b>First-Time Full-Time Freshmen</b>	<b>Certificate or Associates Received</b>	<b>Bachelors Received</b>	<b>Percentage</b>
Fall 1996	19	0	7	36.8%
Fall 1997	17	1	5	35.3%
Fall 1998	51	0	23	45.1%
Fall 1999	51	0	18	35.3%
Fall 2000	43	0	18	41.9%
Fall 2001	45	0	18	40.0%
Fall 2002	41	0	19	46.3%
Fall 2003	37	1	10	29.7%
Fall 2004	47	1	19	42.6%
Fall 2005	65	0	19	29.0%

## Full-Time Enrollment by Degree Program

Term		Total
Fall 2006		1096
	<i>Associate</i>	57
	<i>Baccalaureate</i>	1039
	<i>Non-Degree</i>	0
Fall 2007		1078
	<i>Associate</i>	43
	<i>Baccalaureate</i>	1035
	<i>Non-Degree</i>	0
Fall 2008		1123
	<i>Associate</i>	57
	<i>Baccalaureate</i>	1066
	<i>Non-Degree</i>	0
Fall 2009		1156
	<i>Associate</i>	71
	<i>Baccalaureate</i>	1070
	<i>Non-Degree</i>	15
Fall 2010 <sup>1</sup>		1277
	<i>Associate</i>	324
	<i>Baccalaureate</i>	938
	<i>Non-Degree</i>	15
Fall 2011		1188
	<i>Associate</i>	290
	<i>Baccalaureate</i>	897
	<i>Non-Degree</i>	1
Fall 2012		1232
	<i>Associate</i>	331
	<i>Baccalaureate</i>	859
	<i>Non-Degree</i>	42

<sup>1</sup> Students with low test scores & GPA or deficient HS course work assigned to associate program.

## PartTime Enrollment by Degree Program

Term		Total
Fall 2006		285
	Associate	11
	Baccalaureate	274
	Non-Degree	0
Fall 2007		363
	Associate	9
	Baccalaureate	354
	Non-Degree	0
Fall 2008		320
	Associate	1
	Baccalaureate	319
	Non-Degree	0
Fall 2009		565
	Associate	3
	Baccalaureate	47
	Non-Degree	515
Fall 2010 <sup>1</sup>		551
	Associate	330
	Baccalaureate	47
	Non-Degree	174
Fall 2011		669
	Associate	307
	Baccalaureate	55
	Non-Degree <sup>2</sup>	307
Fall 2012		666
	Associate	271
	Baccalaureate	50
	Non-Degree	345

<sup>1</sup> Adjusted ACT and SAT requirements limiting number of students admitted to a baccalaureate program.

<sup>2</sup> Includes more DMAPS students.

## Enrollment by Academic Program

Program	Fall 2006	Fall 2007	Fall 2008	Fall 2009	Fall 2010	Fall 2011	Fall 2012
<b>Art (BA) (Start 2012)</b>	NA	NA	NA	NA	NA	NA	5
<b>Behavioral Sciences</b>							
Behavioral Science (BSBS) (end 2001 as major)	3	0	1	NA	NA	NA	NA
Basic & Applied Psychology (end 2001)	16	5	2	1	NA	NA	NA
Criminal Justice (BSBS)	104	109	97	59	36	14	10
Psychology/Sociology	67	77	85	76	82	94	93
Total	190	191	185	136	118	108	103
<b>Biology (BS)</b>							
	44	49	50	43	55	51	41
<b>Business Administration</b>							
Accounting (BSBA)	29	39	45	27	19	25	34
Computer Science/Information Systems (BSBA)	19	18	18	14	15	23	24
Management (BSBA)	87	90	87	71	66	64	42
Marketing (BSBA)	26	21	21	19	23	20	14
Resort Area Management (BSBA)(start 2005)	0	0	0	4	5	4	4
Sport Management (BS) (start 2005)	26	54	44	52	57	49	65
Total	187	222	215	187	185	185	183
<b>Business Management (BS) (2+2 Program)</b>	8	1	0	4	5	5	2
<b>Chemistry (BA)</b>	19	16	13	15	18	8	6
<b>Criminal Justice (BS) (Start 2009)</b>	NA	NA	NA	41	53	77	85

### Enrollment by Academic Program (continued)

Program	Fall 2006	Fall 2007	Fall 2008	Fall 2009	Fall 2010	Fall 2011	Fall 2012
<b>Education</b>							
Biological Science (9-adult) (BAED)	5	5	7	5	2	6	6
Business Ed Comprehensive (5-adult) (BAED)	4	5	6	5	5	7	7
Chemistry (9-adult) (BAED)	3	3	13	1	1	4	2
Chemistry & Physics (9-adult) (BAED)	1	1	0	1	2	2	3
Early Education (PreK-K) (BAED)	51	96	85	88	102	76	19 <sup>1</sup>
Elementary Education (K-6) (BAED)	76	2	41	8	7	7	85 <sup>1</sup>
English (5-9) (BAED)	6	12	8	13	16	6	1
English (5-adult) (BAED)	18	19	25	20	24	22	14
General Science (5-9) (BAED)	5	4	1	3	3	3	0
General Science (5-adult) (BAED)	2	1	1	4	5	5	3
Health (5-adult) (end 2010)	0	0	0	2	3	2	2
Health/Physical Education (PreK-adult)(start 2008)	NA	NA	NA	12	24	33	25
Math (5-9) (General Math/Algebra) (BAED)	4	10	11	10	11	7	1
Math (5-adult) (BAED)	12	14	10	11	13	10	13
Multi-Categorical (K-6) (start 2006)	0	0	0	25	20	22	7
Multi-Categorical (Special Ed) (K-adult)(end 2006)	18	29	29	3	1	1	0
Music (non-specified) (BAED)(PreK-adult)	46	42	45	33	35	34	34
Physical Education (PreK-adult) (BAED)	60	56	54	51	26	13	4
Social Studies (5-adult) (BAED)	40	36	33	31	31	30	33
Social Studies (5-9) (BAED)	9	12	7	13	9	7	1
Spanish (5-adult) (BAED)(start 2008)	NA	NA	0	1	3	4	1
Total	363	347	376	340	343	301	261
<b>English (BA)</b>							
	17	14	19	17	16	22	16
<b>History (BA) (renamed 2009)</b>							
	17	15	18	19	12	6	2
<b>History &amp; Political Science (BA)(new code 2009)</b>							
	NA	NA	NA	NA	4	6	12

### Enrollment by Academic Program (continued)

Program	Fall 2006	Fall 2007	Fall 2008	Fall 2009	Fall 2010	Fall 2011	Fall 2012
<b>Interdisciplinary Studies (BA/BS)</b>	1	0	1	0	0	1	1
<b>Music (BA) (new 2007)</b>	NA	0	0	9	12	16	14
<b>Natural Resource Management (BS)</b>	90	104	106	97	110	111	114
<b>Nursing (Pre-Nursing)</b>	55	60	47	24	34	27	26
<b>Regents Bachelor of Arts (BORBA)</b>	8	16	9	12	10	18	21
<b>Undeclared</b>	59	35	61	51	9 <sup>1</sup>	10	18
<b>Associate Programs</b>							
Criminal Justice (AS)	12	7	9	13	193 <sup>2</sup>	146	132
Forest Technology (AS)	29	18	13	8	13	12	14
General Business (AA)	15	16	27	18	227 <sup>2</sup>	247	226
General Studies (AA)	20	16	21	143	206	176	210
Land Surveying (AS)	12	12	14	13	15	16	19
Total	88	69	84	195	654	597	601
<b>Non-Degree Seeking</b>	238	286	263	541	190 <sup>2</sup>	308	387
<b>Total Headcount</b>	<b>1381</b>	<b>1441</b>	<b>1443</b>	<b>1721</b>	<b>1828</b>	<b>1857</b>	<b>1898</b>

<sup>1</sup> Classification changed to work better during the evaluation process for Degree Works.

<sup>2</sup> FCI (AA Business) and DMAP (AS Criminal Justice) students entered as degree seeking.

## Graduation by Academic Programs

Program	2006-07	2007-08	2008-09	2009-10	2010-11	2011-12
<b>Behavioral Science (BS)</b>	2	6	1	0	0	0
Psychology/Sociology	9	4	19	14	16	18
Criminal Justice	10	9	17	13	13	9
Basic & Applied Psychology ( <i>discontinued</i> )	7	1	3	2	0	0
<b>Total</b>	28	20	40	29	29	27
<b>Biology (BS)</b>	5	3	8	6	3	4
<b>Business Administration (BSBA)</b>						
Accounting (BSBA)	5	3	16	2	6	4
General Business (BSBA)	1	0	0	0	0	0
Computer and Information Systems (BSBA)	3	1	2	3	2	0
Management (BSBA)	18	5	13	8	11	13
Marketing (BSBA)	7	4	1	2	4	1
Resort Area Management	0	0	0	0	0	1
Sport Management (BA) ( <i>discontinued 2001</i> )	3	0	3	1	4	0
Sport Management (BS) ( <i>start 2005</i> )	0	0	0	0	0	6
<b>Total</b>	37	13	35	16	27	27
<b>Business Management (BS) (2+2 Program)</b>	0	0	0	0	0	2
<b>Chemistry (BA)</b>	6	5	5	0	4	1
<b>Criminal Justice (BS) (<i>Start Aug 2009</i>)</b>	NA	NA	NA	1	1	0
<b>Education</b>						
Biological Science (9-Adult)	0	0	0	1	0	1
Business Ed Comprehensive (5-Adult) (BAED)	0	1	0	2	2	0
Chemistry (9-12) (BAED)	2	1	0	0	0	0
Early Education (PreK-K) (BAED)	11	14	10	11	23	18
Elementary Education (BAED)	3	11	0	1	1	0
English (5-Adult) (BAED)	6	1	5	0	4	2

## Graduation by Academic Programs (continued)

Program	2006-07	2007-08	2008-09	2009-10	2010-11	2011-12
<b>Education (continued)</b>						
English (5-9) (BAED)	1	0	4	2	4	1
General Science (5-Adult) (BAED)	0	0	0	0	0	1
General Science (5-9) (BAED)	1	1	1	0	1	0
Health/Physical Education (PreK-Adult)(BAED)	NA	NA	NA	NA	0	1
Math (5-Adult) (BAED)	0	0	2	2	3	1
Math (5-9) (BAED)	1	0	2	3	2	1
Multi-Categorical (K-Adult) (BAED)(End 2006)	8	6	6	5	0	0
Multi-Categorical (K-6) (BAED)	0	1	0	1	4	2
Music (PreK-Adult) (BAED)	6	8	2	1	4	5
Physical Education (PreK-Adult) (BAED)	3	5	6	4	2	4
Social Studies (5-Adult) (BAED)	9	2	4	3	7	1
Social Studies (5-9) (BAED)	0	0	0	1	1	0
Spanish Education (BAED)(Start 2009)	NA	NA	NA	0	0	1
<b>Total</b>	51	51	42	37	58	39
<b>English (BA)</b>	8	0	1	1	3	3
<b>History (BA)</b>	8	2	7	3	2	2
<b>History Political Science (<i>new major code</i>)</b>	0	0	0	1	1	1
<b>Interdisciplinary Studies (BA/BS)</b>	0	0	1	1	0	1
<b>Music</b>	0	0	1	3	1	5
<b>Natural Resource Management (BS)</b>	11	21	28	15	16	19
<b>Regents Bachelor of Arts (BORBA)</b>	16	8	16	20	16	22

### Graduation by Academic Programs (continued)

Program	2006-07	2007-08	2008-09	2009-10	2010-11	2011-12
<b>Associate Degrees</b>						
Administrative Science ( <i>discontinued 2004</i> )	0	2	0	0	0	0
General Business	3	2	12	8	18	27
Criminal Justice (AS)	2	2	1	2	0	12
Forest Technology (AS)	12	10	12	7	9	12
General Studies (AA)	5	20	3	2	1	3
Land Surveying (AS)	9	2	7	10	8	4
Paralegal Technology (AS)( <i>discontinued</i> )	0	1	0	0	0	0
<b>Total</b>	32	39	35	29	36	58
<b>Grand Total</b>	215	164	219	161	197	209

---

### Degrees Conferred

Degree Type	2006-07	2007-08	2008-09	2009-10	2010-11	2011-12
Associate Degree	32	30	31	29	36	58
Baccalaureate Degree	182	188	179	132	161	151
Total	214	218	210	161	197	209

Student Profile														
Fall 2006 – Fall 2012														
	Fall 2006		Fall 2007		Fall 2008		Fall 2009		Fall 2010		Fall 2011		Fall 2012	
	Number	Percent	Number	Percent	Number	Percent	Number	Percent	Number	Percent	Number	Percent	Number	Percent
Students Total	1381	100%	1441	100%	1443	100%	1721	100%	1828	100%	1857	100%	1898	100%
Gender														
Male	719	52%	742	51%	813	56%	978	57%	1010	55%	1078	58%	1117	59%
Female	662	48%	699	49%	630	44%	743	43%	818	45%	779	42%	781	41%
Residence														
WV Resident	1260	91%	1268	88%	1272	88%	1547	90%	1624	89%	1630	88%	1607	85%
Non-Resident	112	9%	173	12%	171	12%	174	10%	204	11%	227	12%	291	15%
Attendance Status														
Full-Time	1095	79%	1078	75%	1123	78%	1156	67%	1277	70%	1188	64%	1232	65%
Part-Time	286	21%	363	25%	320	22%	565	33%	551	30%	667	36%	666	35%
Ethnicity														
White	1268	92%	1235	85%	1160	80%	1424	83%	1508	82%	1452	78%	1484	78%
African-Amer.	93	7%	181	13%	254	18%	249	14%	274	15%	302	16%	323	17%
Other*	20	1%	25	2%	29	2%	48	3%	46	3%	103	6%	91	5%
Age														
Under 25	1122	81%	1142	79%	1101	76%	1186	69%	1239	68%	1224	66%	1229	64%
25-29	114	8%	126	9%	130	9%	174	10%	148	8%	181	10%	209	11%
30-39	86	6%	108	7%	144	10%	223	13%	266	14%	263	14%	258	14%
40+	59	5%	65	5%	68	5%	126	7%	157	9%	189	10%	202	11%
Unknown							12	1%	18	1%				

---

### Enrollment by Gender – All Students

Term	Total Enrollment	Males	Females	Percentage Male	Percentage Female
Fall 2006	1381	719	662	52%	48%
Fall 2007	1441	742	699	51%	49%
Fall 2008	1443	813	630	56%	44%
Fall 2009	1721	978	743	57%	43%
Fall 2010	1828	1010	818	55%	45%
Fall 2011	1857	1078	779	58%	42%
Fall 2012	1898	1117	781	59%	41%

---

### Enrollment by Gender – Excluding FCI & DMAPS

Term	Total Enrollment	Males	Females	Percentage Male	Percentage Female
Fall 2006	1297	635	662	49%	51%
Fall 2007	1339	640	699	48%	52%
Fall 2008	1281	652	629	51%	49%
Fall 2009	1351	679	672	50%	50%
Fall 2010	1449	718	731	50%	50%
Fall 2011	1413	733	680	52%	48%
Fall 2012	1455	771	684	53%	47%

## Enrollment By State of Residence

### Fall

Home of Residence	2006	2007	2008	2009	2010	2011	2012
Alabama	0	2	4	2	1	1	3
California	7	9	7	7	11	6	12
District of Columbia	1	3	9	8	14	30	41
Florida	7	17	18	15	20	13	15
Georgia	2	6	4	6	4	8	6
Illinois	0	1	1	2	8	6	9
Kentucky	2	1	0	1	3	1	6
Maryland	14	23	25	18	28	38	30
Michigan	8	8	6	5	4	5	3
North Carolina	2	2	4	1	4	5	3
New York	0	1	5	8	5	12	11
Ohio	31	27	30	30	36	50	47
Pennsylvania	14	19	9	5	4	2	6
Texas	2	6	4	2	2	3	2
Virginia	10	16	32	42	46	57	76
West Virginia	1258	1275	1269	1547	1624	1601	1607
All Other States	12	20	13	20	12	14	16
Foreign Countries	11	5	3	2	2	5	5
<b>Total</b>	<b>1381</b>	<b>1441</b>	<b>1443</b>	<b>1721</b>	<b>1828</b>	<b>1857</b>	<b>1898</b>

## Enrollment by Ethnicity

Term	White Non-Hispanic	Black Non-Hispanic	Hispanic	Asian or Pacific Islander	American Indian or Alaskan Native	Non-Resident Aliens	Unknown	Total	% Minority
Fall 2006	1269	92	10	9	1	0	0	<b>1381</b>	8%
Fall 2007	1235	181	16	5	4	0	0	<b>1441</b>	14%
Fall 2008	1160	254	18	6	5	0	0	<b>1443</b>	20%
Fall 2009	1424	249	21	4	7	0	16	<b>1721</b>	16%
Fall 2010	1508	274	26	6	10	0	4	<b>1828</b>	17%
Fall 2011	1452	302	33	6	15	0	49	<b>1857</b>	19%
Fall 2012	1480	323	32	4	13	11	35	<b>1898</b>	20%

## Percentage of Enrollment by Ethnicity

Term	White Non-Hispanic	Black Non-Hispanic	Hispanic	Asian or Pacific Islander	American Indian or Alaskan Native	Non-Resident Aliens	Unknown	% Minority
Fall 2006	92%	7%	.7%	.6%	0%	0%	0%	8%
Fall 2007	86%	13%	1%	.3%	.2%	0%	0%	14%
Fall 2008	80%	18%	1%	.4%	.3%	0%	0%	20%
Fall 2009	83%	14%	1%	.2%	.4%	0%	.9%	16%
Fall 2010	82%	15%	1%	.3%	.5%	0%	.2%	17%
Fall 2011	78%	16%	2%	.3%	.8%	0%	3%	19%
Fall 2012	78%	17%	2%	.2%	.7%	.6%	2%	20%

### Average Age of All Students

Term	Age
Fall 2006	23
Fall 2007	23
Fall 2008	23
Fall 2009 <sup>1</sup>	25
Fall 2010	25
Fall 2011	26
Fall 2012	26

### Students Age 25 and Older – All

Term	Undergraduate Enrollment	Undergraduates 25 Years or Older	Percent
Fall 2006	1381	259	19%
Fall 2007	1441	299	21%
Fall 2008	1443	342	24%
Fall 2009 <sup>1</sup>	1721	523	30%
Fall 2010	1828	589	32%
Fall 2011	1857	633	34%
Fall 2012	1898	669	35%

<sup>1</sup> Significant change is due to enrollment growth of FCI Gilmer and DMAPS students

---

### Students Age 25 and Older - All Freshmen

Term	Total Freshmen	Freshmen 25 Years or Older	% of Total Freshmen
Fall 2006	434	88	20%
Fall 2007	446	77	17%
Fall 2008	490	90	18%
Fall 2009 <sup>1</sup>	569	96	17%
Fall 2010	708	239	34%
Fall 2011	682	236	35%
Fall 2012	680	221	33%

---



---

### Students Age 25 and Older - Part-Time

Term	Part-Time Enrollment	Part-Time Students 25 Years or Older	Percent of Part-Time Student 25 Years or Older
Fall 2006	285	111	39%
Fall 2007	363	162	45%
Fall 2008	320	190	59%
Fall 2009 <sup>1</sup>	565	327	58%
Fall 2010	551	325	59%
Fall 2011	669	417	62%
Fall 2012	666	419	63%

---

<sup>1</sup> Large change is due to the number of FCI Gilmer and DMAPS students enrolled.

### ACT Scores and SAT Scores - Fall First-Time/Full-Time

			State College
Term	ACT Average	SAT Average	System ACT Average
Fall 2006	18.6	844	20.6
Associate	17.4	805	
Baccalaureate	18.7	847	
Fall 2007	19.3	834	20.6
Associate	18.6	0 <sup>1</sup>	
Baccalaureate	19.4	834	
Fall 2008	19.0	823	20.7
Associate	16.9	740	
Baccalaureate	19.2	828	
Fall 2009	19.1	852	20.7
Associate	18.0	800	
Baccalaureate	19.2	853	
Fall 2010	19.4	836	20.7
Associate	16.3	719	
Baccalaureate	21.6	949	
Fall 2011	19.0	800	20.6
Associate	16.7	745	
Baccalaureate	20.4	858	
Fall 2012	18.9	830	NA
Associate	17	757	
Baccalaureate	20.5	914	

<sup>1</sup> None Submitted

---

### ACT Scores and SAT Scores – Spring Admits First-Time/Full-Time

Term	ACT Average	SAT Average
Spring 2007	17.9	780
<b>Associate</b>	15	0 <sup>1</sup>
<b>Baccalaureate</b>	18.6	780
Spring 2008	19	0 <sup>1</sup>
<b>Associate</b>	16	0 <sup>1</sup>
<b>Baccalaureate</b>	19.4	657
Spring 2009	17.6	815
<b>Associate</b>	14.3	0 <sup>1</sup>
<b>Baccalaureate</b>	19.2	815
Spring 2010	18.7	700
<b>Associate</b>	15.1	0 <sup>1</sup>
<b>Baccalaureate</b>	20.7	700
Spring 2011	18.3	1070
<b>Associate</b>	18	840
<b>Baccalaureate</b>	18.8	1300
Spring 2012	17	750
<b>Associate</b>	16.4	750
<b>Baccalaureate</b>	18.8	0 <sup>1</sup>

<sup>1</sup> None Submitted

### Grade Point Averages Semester<sup>1</sup>

	2006-07		2007-08		2008-09		2009-10		2010-11		2011-12	
	Fall	Spring	Fall	Spring	Fall	Spring	Fall	Spring	Fall	Spring	Fall	Spring
All Students	2.29	2.29	2.28	2.47	2.29	2.47	2.39	2.42	2.29	2.33	2.45	2.70
All Freshmen	2.17	2.17	2.13	2.20	2.03	2.09	2.21	2.20	2.27	2.04	2.28	2.16
First-Time Full-Time Freshmen	2.38	2.38	2.55	2.09	2.20	2.42	2.47	1.96	2.49	2.41	2.41	2.72

### Grade Point Averages Cumulative<sup>2</sup>

	2006-07		2007-08		2008-09		2009-10		2010-11		2011-12	
	Fall	Spring	Fall	Spring	Fall	Spring	Fall	Spring	Fall	Spring	Fall	Spring
All Students	2.43	2.77	2.49	2.75	2.47	2.66	2.56	2.62	2.55	2.61	2.69	2.86
All Freshmen	2.31	2.30	2.40	2.54	2.15	2.32	2.42	2.47	2.53	2.44	2.58	2.46
First-Time Full-Time Freshmen	2.40	2.24	2.54	2.08	2.20	2.41	2.51	2.00	2.49	2.47	2.44	2.76

<sup>1</sup> Semester GPA shows work completed for the semester.

<sup>2</sup> Cumulative GPA includes the total of all dual credit, transfer, and GSC work.

---

**Enrollment in One or More Developmental Courses – Fall**  
First-Time/Full-Time

<b>Term</b>	<b>Freshmen</b>	<b>Developmental Courses</b>	<b>Percent in Developmental Courses</b>
Fall 2006	267	172	64%
Fall 2007	291	190	65%
Fall 2008	303	191	63%
Fall 2009	329	214	65%
Fall 2010	313	189	60%
Fall 2011	284	179	63%
Fall 2012	339	208	61%

---

**Enrollment in One or More Developmental Courses – Spring Admits**  
First-Time/Full-Time

<b>Term</b>	<b>Freshmen</b>	<b>Developmental Courses</b>	<b>Percent in Developmental Courses</b>
Spring 2006	24	18	75%
Spring 2007	20	9	45%
Spring 2008	24	16	67%
Spring 2009	30	24	80%
Spring 2010	33	26	78%
Spring 2011	41	37	90%
Spring 2012	22	16	73%

---

---

## West Virginia County Enrollment – Top 25

### Fall

County	2006	2007	2008	2009	2010	2011	2012
Gilmer	239	229	231	237	284	219	196
Braxton	186	162	147	165	195	167	180
Gilmer (FCI)	84	102	162	191	181	188	175
Nicholas	72	50	56	83	90	66	91
Clay	34	33	32	33	38	35	72
Lewis	74	60	62	72	73	70	72
Ritchie	36	58	48	44	43	80	71
Calhoun	100	102	85	105	99	86	61
Roane	33	43	56	56	54	56	52
Kanawha	40	40	39	44	52	51	52
Raleigh	12	42	13	39	39	30	50
Randolph	24	35	31	44	48	47	50
Harrison	22	27	29	33	32	44	37
Wood	25	30	27	38	44	46	37
Upshur	37	23	28	23	29	34	33
Fayette	19	14	17	26	25	28	27
Webster	29	23	24	27	28	23	24
Jackson	20	23	17	15	21	20	23
Berkeley	5	10	13	30	21	27	21
Pendleton	12	10	10	6	6	10	18
Pocahontas	5	7	7	16	8	10	18
Cabell	9	7	6	16	12	11	13
Putnam	8	12	9	8	8	10	13
Barbour	5	9	9	9	9	9	12
Wirt	25	17	13	19	22	17	12
Mason	7	4	2	10	5	17	16

### West Virginia County Enrollment - All

County	2006	2007	2008	2009	2010	2011	2012
Barbour	5	9	9	9	9	9	12
Berkeley	5	10	13	30	21	27	21
Boone	2	2	3	4	3	9	7
Braxton	186	162	147	165	195	167	180
Brooke	2	1	1	2	1	1	4
Cabell	9	7	6	16	12	11	13
Calhoun	100	102	85	105	99	86	61
Clay	34	33	32	33	38	35	72
Doddridge	11	11	12	10	16	14	11
Fayette	19	14	17	26	25	28	27
Gilmer	239	229	231	237	284	219	196
Gilmer (FCI)	84	102	162	191	181	188	175
Grant	3	5	4	5	3	3	2
Greenbrier	8	10	7	14	13	14	10
Hampshire	1	2	2	11	6	6	8
Hancock	7	6	5	3	3	4	3
Hardy	5	5	6	3	2	1	5
Harrison	22	27	29	33	32	44	37
Jackson	20	23	17	15	21	20	23
Jefferson	3	1	2	3	7	7	7
Kanawha	40	40	39	44	52	51	52
Lewis	74	60	62	72	73	70	72
Lincoln	3	2	1	4	4	10	7
Logan	3	3	3	3	7	5	7
Marion	5	3	4	4	7	11	10
Marshall	3	2	1	8	6	10	11
Mason	7	4	2	10	5	17	16
McDowell	0	1	0	4	2	10	6

### West Virginia County Enrollment (continued)

County	2006	2007	2008	2009	2010	2011	2012
<b>Mercer</b>	1	5	1	6	7	8	9
<b>Mineral</b>	5	7	9	5	3	1	2
<b>Mingo</b>	1	3	3	2	3	2	4
<b>Monongalia</b>	2	3	3	4	6	5	4
<b>Monroe</b>	1	2	1	3	3	5	3
<b>Morgan</b>	0	0	0	2	2	3	5
<b>Nicholas</b>	72	50	56	83	90	66	91
<b>Ohio</b>	0	1	1	6	2	4	3
<b>Pendleton</b>	12	10	10	6	6	10	18
<b>Pleasants</b>	4	9	6	14	13	7	4
<b>Pocahontas</b>	5	7	7	16	8	10	18
<b>Preston</b>	4	1	2	4	8	4	3
<b>Putnam</b>	8	12	9	8	8	10	13
<b>Raleigh</b>	12	42	13	39	39	30	50
<b>Randolph</b>	24	35	31	44	48	47	50
<b>Ritchie</b>	36	58	48	44	43	80	71
<b>Roane</b>	33	43	56	56	54	56	52
<b>Summers</b>	3	5	4	3	2	7	9
<b>Taylor</b>	1	1	2	5	4	8	10
<b>Tucker</b>	4	4	4	14	4	7	8
<b>Tyler</b>	2	4	4	8	2	5	4
<b>Upshur</b>	37	23	28	23	29	34	33
<b>Wayne</b>	0	1	0	0	4	5	4
<b>Webster</b>	29	23	24	27	28	23	24
<b>Wetzel</b>	5	4	1	9	5	8	5
<b>Wirt</b>	25	17	13	19	22	17	12
<b>Wood</b>	25	30	27	38	44	46	37
<b>Wyoming</b>	3	0	4	7	10	8	5

Residence Hall Occupancy Rates							
Fall 2012							
Hall Name	Room Type	# of rooms	Max # students	# occupants	Occupancy Rates	Male	Female
<b>Goodwin</b>	Single	192	192	182	95%	106	76
	Double	145	290	264	91%	205	59
	<b>Total</b>	<b>337</b>	<b>482</b>	<b>446</b>	<b>93%</b>	<b>311</b>	<b>135</b>
<b>Pioneer Village</b>	Single	152	152	128	84%	78	50
<b>Sub Total</b>	Single	344	344	310	90%	184	126
<b>Sub Total</b>	Double	145	290	264	91%	205	59
	<b>Total</b>	<b>489</b>	<b>634</b>	<b>574</b>	<b>91%</b>	<b>389</b>	<b>185</b>
<b>Pickens</b>	APT	6	12	3	25%	2	1
	Single	0	0	0	0	0	0
	Double	12	24	10	42%	9	1
<b>Grand Totals</b>		<b>507</b>	<b>670</b>	<b>587</b>	<b>88%</b>	<b>400</b>	<b>187</b>

\* Headcount as of 2 day of classes.

### Student/Faculty Ratios<sup>1</sup>

Term	FTE Students	FTE Faculty	FTE Student/Faculty Ratio
Fall 2006	1218	59	21:1
Fall 2007	1207	67	18:1
Fall 2008	1262	70	18:1
Fall 2009	1356	74	18:1
Fall 2010	1468	79	19:1
Fall 2011	1412	80	18:1
Fall 2012	1445	93 <sup>2</sup>	16:1 <sup>2</sup>

<sup>1</sup> Ratios computed by Student FTE (student total credit hours produced / 15) ; Faculty FTE (full-time faculty + 1/3 of part-time faculty)

<sup>2</sup> Reflects an increase in the number of courses being delivered to Adult Learners and High School students (dual credit).

## Full-Time Instructional Faculty by Academic Rank

	Professor		Associate Professor		Assistant Professor		Instructor		Lecturer, Graduate Assistant & Other		
Term	#	%	#	%	#	%	#	%	#	%	Total
Fall 2007	9	16%	16	28%	20	35%	10	18%	2	4%	57
Fall 2008	8	13%	16	27%	20	33%	14	24%	2	3%	60
Fall 2009	9	15%	16	27%	22	37%	13	21%	0	0%	60
Fall 2010	10	15%	15	22%	24	36%	18	27%	0	0%	67
Fall 2011	10	15%	18	26%	28	41%	12	18%	0	0%	68
Fall 2012	11	17%	17	25%	29	44%	9	14%	0	0%	66

## Full-Time Instructional Faculty by Tenure Status

	Professor			Associate Professor			Assistant Professor			Instructor			Lecturer, Graduate Assistant & Other			Total		
Term	#	Tenured	%	#	Tenured	%	#	Tenured	%	#	Tenured	%	#	Tenured	%	#	Tenured	%
Fall 2007	9	9	100%	16	10	63%	20	2	10%	10	0	0%	2	0	0%	57	21	37%
Fall 2008	8	8	100%	16	10	63%	20	2	10%	14	0	0%	2	0	0%	60	20	33%
Fall 2009	9	9	100%	16	11	69%	22	1	5%	13	0	0%	0	0	0%	60	21	35%
Fall 2010	10	10	100%	15	14	93%	24	1	4%	18	0	0%	0	0	0%	67	25	37%
Fall 2011	10	10	100%	18	17	94%	28	2	7%	12	0	0%	0	0	0%	68	29	43%
Fall 2012	11	11	100%	17	16	94%	29	3	10%	9	0	0%	0	0	0%	66	30	45%

Source: Faculty and Staff Characteristics – WVHEPC. Data for 2012-13 reflects submission information

### Full-Time Instructional Faculty by Highest Degree Held

Term	Doctoral		Masters		First Professional		Bachelors		Total
	#	%	#	%	#	%	#	%	
Fall 2007	32	56%	24	42%	0	0%	1	2%	57
Fall 2008	31	52%	28	47%	0	0%	1	2%	60
Fall 2009	32	53%	27	45%	0	0%	1	2%	60
Fall 2010	32	48%	32	48%	1	1%	2	3%	67
Fall 2011	37	54%	29	43%	1	1%	1	1%	68
Fall 2012	35	53%	30	45%	1	2%	0	0%	66

### Part-Time Instructional Faculty by Highest Degree Held

Term	Doctoral		Masters		First Professional		Bachelors		Other		Total
	#	%	#	%	#	%	#	%	#	%	
Fall 2007	4	15%	18	67%	1	4%	3	11%	0	0%	26
Fall 2008	4	17%	14	58%	2	8%	4	17%	0	0%	24
Fall 2009	4	10%	25	61%	0	0%	9	22%	3	7%	41
Fall 2010	1	3%	25	69%	4	11%	4	11%	2	6%	36
Fall 2011	1	3%	24	67%	5	13%	6	17%	0	0%	36
Fall 2012 <sup>1</sup>	7	9%	62	76%	3	4%	9	11%	0	0%	81 <sup>1</sup>

<sup>1</sup> Reflects an increase in the number of courses being delivered to Adult Learners and High School students (dual credit).

Source: *Faculty and Staff Characteristics – WVHEPC. Data for 2012-13 reflects submission information.*

## Full-Time Instructional Faculty by Gender

Term	Male		Female		Total Number
	Number	Percentage	Number	Percentage	
Fall 2007	36	63%	21	37%	57
Fall 2008	36	60%	24	40%	60
Fall 2009	37	62%	23	38%	60
Fall 2010	45	67%	22	33%	67
Fall 2011	46	68%	22	32%	68
Fall 2012	41	62%	25	38%	66

Source: Faculty and Staff Characteristics – WVHEPC. Data for 2012-13 reflects submission information.

### Full-Time Instructional Faculty by Ethnicity

Term	White, Non-Hispanic		Black, Non-Hispanic		Hispanic		Asian or Pacific Islander		American Indian or Alaskan Native		Total	% Minority
	#	%	#	%	#	%	#	%	#	%		
Fall 2007	55	96.5%	0	0.0%	0	0.0%	2	3.5%	0	0.0%	57	3.5%
Fall 2008	57	95.0%	0	0.0%	1	1.7%	2	3.3%	0	0.0%	60	5.0%
Fall 2009	58	97.0%	0	0.0%	1	1.7%	1	1.7%	0	0.0%	60	3.3%
Fall 2010	63	94.3%	1	1.49%	1	1.49%	2	2.99%	0	0.0%	67	6.0%
Fall 2011	65	95.6%	1	1.47%	1	1.47%	1	1.47%	0	0.0%	68	4.0%
Fall 2012	63	95.5%	1	1.51%	1	1.51%	1	1.51%	0	0.0%	66	4.5%

Source: Faculty and Staff Characteristics – WVHEPC. Data for 2012-13 reflects submission information.

## Full-Time Instructional Faculty - Average Nine-Month Base Salary<sup>1</sup>

	Professor		Associate Professor		Assistant Professor		Instructor		Lecturer, Graduate Assistant & Other			
Term	#	Salary	#	Salary	#	Salary	#	Salary	#	Salary	Total	Average Salary
Fall 2007	9	\$64,054	16	\$55,606	20	\$44,495	10	\$36,754	2	\$31,907	57	\$48,903
Fall 2008	8	\$65,885	16	\$58,216	20	\$46,100	14	\$35,203	2	\$33,243	60	\$48,997
Fall 2009	9	\$64,608	16	\$56,851	22	\$43,158	13	\$35,587	0	\$0	60	\$48,367
Fall 2010	10	\$65,093	15	\$58,224	24	\$45,566	18	\$37,858	0	\$0	67	\$49,244
Fall 2011	10	\$69,249	18	\$60,610	28	\$48,367	12	\$42,015	0	\$0	68	\$53,558
Fall 2012	11	\$69,758	17	\$60,384	29	\$48,981	9	\$40,728	0	\$0	66	\$54,005

<sup>1</sup>Data does not include pay for extra or extended assignments.

Source: Faculty and Staff Characteristics – WVHEPC. Data for 2009 & 2010 reflects submission information.

### Semester Tuition and Fees 2006-2012

	2006-07	2007-08	2008-09	2009-10	2010-11	2011-12	2012-13
<b>Resident</b>	\$1,941	\$2,087	\$2,243	\$2,444	\$2,444	\$2,676	\$2,930
<b>Non-Resident</b>	\$4,647	\$4,995	\$5,369	\$5,851	\$6,000	\$6,360	\$6,912
<b>Metro Rate</b>	NA	NA	\$3,700	\$4,032	\$4,116	\$4,416	\$4,812

### Annual Tuition Comparisons Fall 2012

Institution Name	In-State Tuition	Out-of-State Tuition	Metro Rate	Room & Board
Bluefield State College	\$5,180	\$9,944	\$7,544	NA
Concord University	\$5,716	\$12,698	NA	\$7,386
Fairmont State University	\$5,326	\$11,230	NA	\$7,420
<b>Glenville State College</b>	<b>\$5,860</b>	<b>\$13,824</b>	<b>\$9,624</b>	<b>\$8,400</b>
Shepherd University	\$5,834	\$15,136	NA	\$8,424
West Liberty University	\$5,530	\$13,140	\$11,026	\$8,200
West Virginia State University	\$5,076	\$12,506	\$9,822	\$6,804
<b>Average</b>	<b>\$5,503</b>	<b>\$12,640</b>	<b>\$9,504</b>	<b>\$7,722</b>

Source: College Web sites

## Revenues Summarized<sup>1</sup>

	2009-10	2010-11	2011-12
<b>Operating Revenues:</b>			
Tuition and fees	\$6,808,393	\$7,190,265	\$8,163,110
Government Contracts and Grants	\$4,352,680	\$3,825,089	\$3,828,959
Private gifts, grants, and contracts	\$944,304	\$943,979	\$1,256,253
Sales and services of educational activities	\$1,196,469	\$1,359,444	\$1,161,411
Sales and services of auxiliary enterprises	\$4,572,163	\$4,965,502	\$5,369,938
Other sources	\$567,703	\$961,581	\$1,035,093
<b>Total Operating Revenues</b>	<b>\$18,441,712</b>	<b>\$19,245,860</b>	<b>\$20,814,764</b>
<b>Non-Operating Revenues:</b>			
Government Appropriations	\$6,051,935	\$6,174,510	\$7,097,804
Federal PELL Grants	\$3,281,699	\$3,697,039	\$3,538,833
Income from investments	\$28,994	\$18,002	\$7,279
<b>Total Non-Operating Revenues</b>	<b>\$9,362,628</b>	<b>\$9,889,551</b>	<b>\$10,643,916</b>
<b>Other</b> Capital Proceeds from Commission	\$406,191	\$1,012,300	\$595,893
<b>Total revenues</b>	<b>\$28,210,531</b>	<b>\$30,147,711</b>	<b>\$32,054,573</b>

<sup>1</sup>See GSC Audited Financial Statements for Full Revenue Reports

## Educational and General (E&G) Expenditures Summarized<sup>1</sup>

	2009-10	2010-11	2010-11
<b>Operating Expenses:</b>			
Instruction	\$6,693,360	\$6,536,173	\$6,942,428
Academic Support	\$988,246	\$1,114,276	\$1,199,797
Student Services	\$1,831,239	\$2,187,213	\$2,199,934
General Institutional Support	\$4,421,298	\$5,087,916	\$4,390,695
Operation and Maintenance of Plant	\$2,575,919	\$2,635,041	\$3,234,550
Scholarships and Aid	\$7,083,054	\$7,718,038	\$8,181,621
Auxiliary Enterprises	\$4,340,450	\$4,258,997	\$5,006,064
Depreciation	\$1,465,842	\$1,959,465	\$2,082,465
Fees Assessed by Policy Commission	\$65,850	\$68,357	\$73,500
<b>Total Operating Expenses</b>	<b>\$29,465,258</b>	<b>\$31,565,476</b>	<b>\$33,311,054</b>
<b>Non-Operating Expenses:</b>			
Interest on Indebtedness	\$626,332	\$1,233,412	\$1,709,576
Other	\$17,602	\$14,083	\$41,874
<b>Total Non-Operating Expenses</b>	<b>\$643,934</b>	<b>\$1,247,495</b>	<b>\$1,751,450</b>
<b>Total Expenditures</b>	<b>\$30,109,192</b>	<b>\$32,812,971</b>	<b>\$35,062,504</b>

<sup>1</sup>See GSC Audited Financial Statements for Full Expenditure Reports

---

**Financial Aid Summary**  
**First-Time Full-Time Freshmen**

	<b>2010-2011</b>	<b>2011-2012</b>
<b>Applied for Financial Aid</b>	296	284
<b>Determined to have Financial need</b>	263	244
<b>Awarded Financial Aid</b>	261	241
<b>Average Financial Package</b>	\$11,227	\$12,235

---

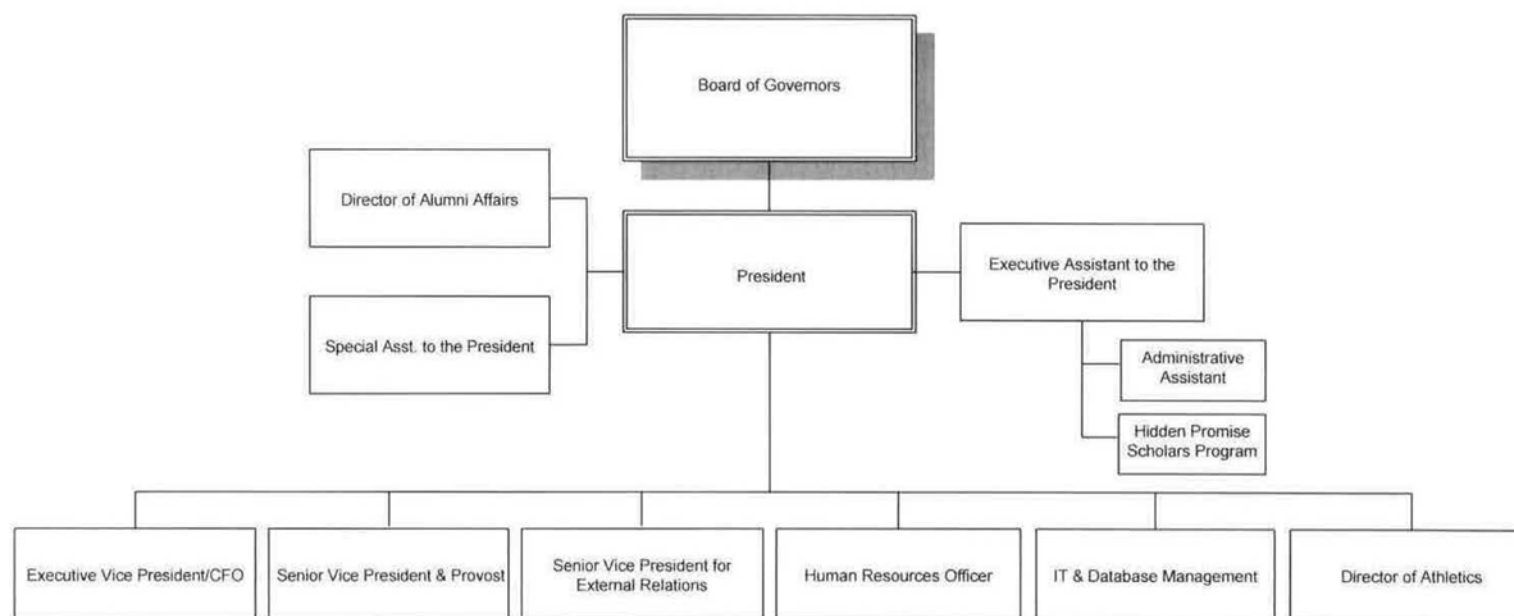
**Financial Aid  
Processed**

	<b>2008-2009</b>	<b>2009-2010</b>	<b>2010-2011</b>	<b>2011-2012</b>
All types of Aid	\$7,028,082	\$8,221,018	\$9,759,269	\$9,172,338
Loans Processed	\$5,995,410	\$6,706,221	\$7,279,348	\$7,496,207
Total	\$13,023,492	\$14,927,239	\$17,038,617	\$16,668,545

---



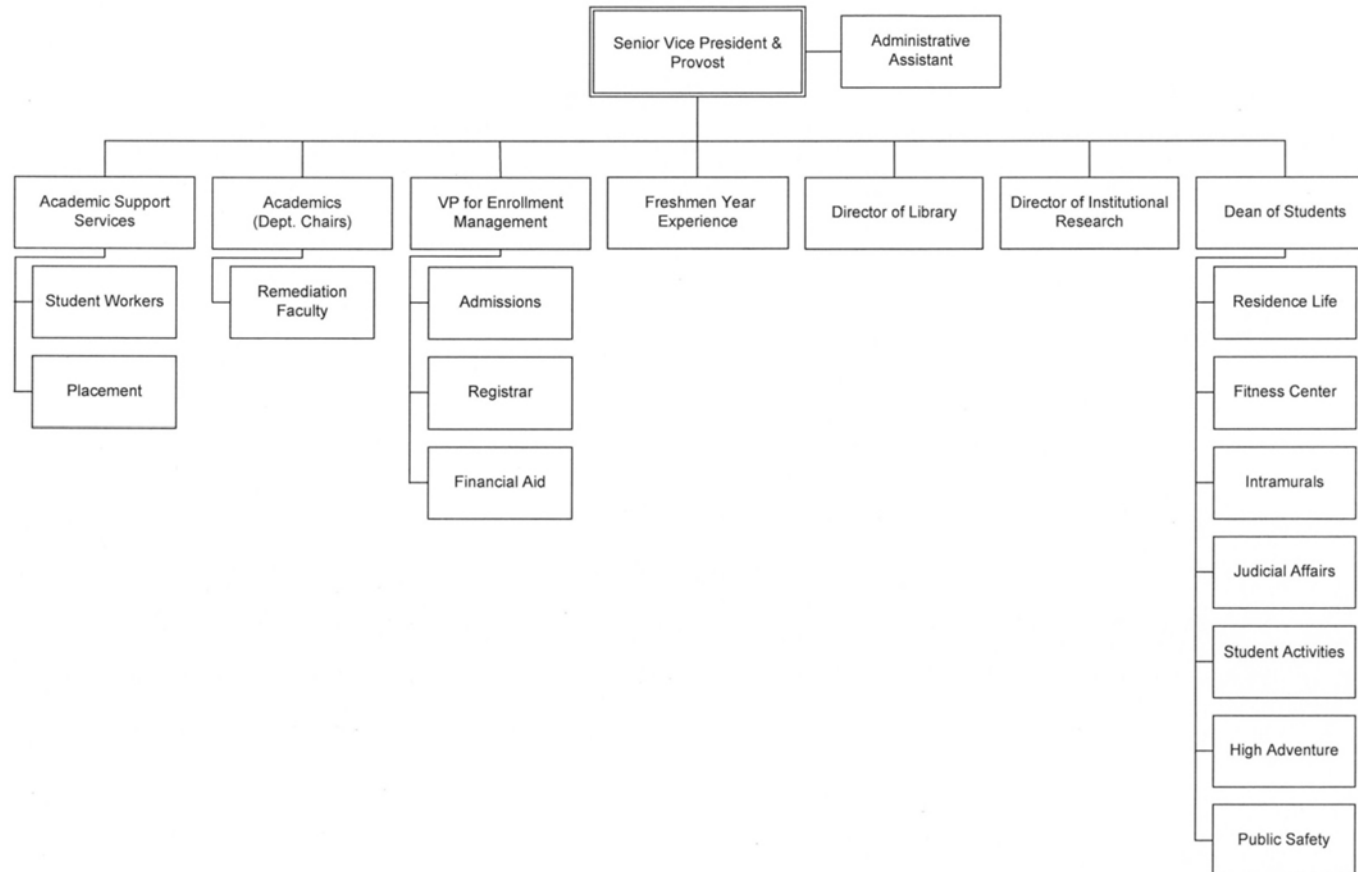
## GLENVILLE STATE COLLEGE ORGANIZATIONAL CHART



Updated 11/08/11



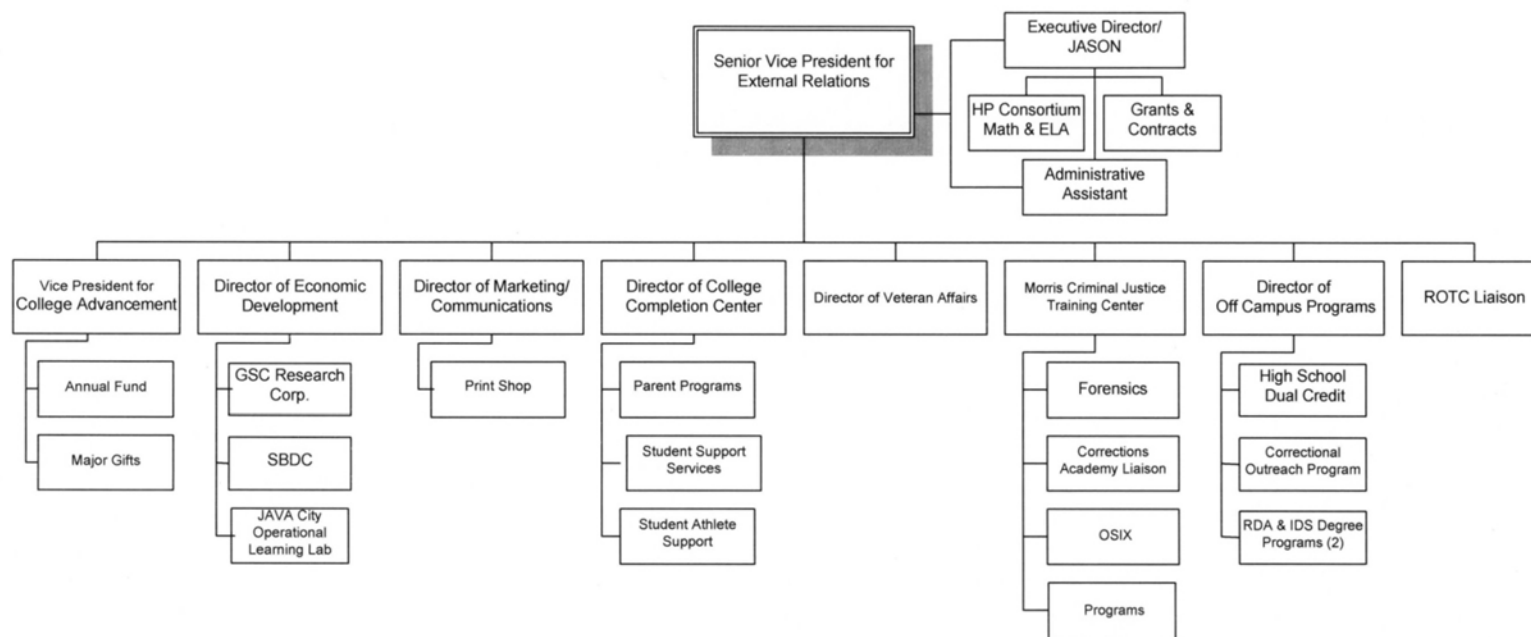
GLENVILLE STATE COLLEGE  
ORGANIZATIONAL CHART  
Senior Vice President & Provost



Updated 11/08/11



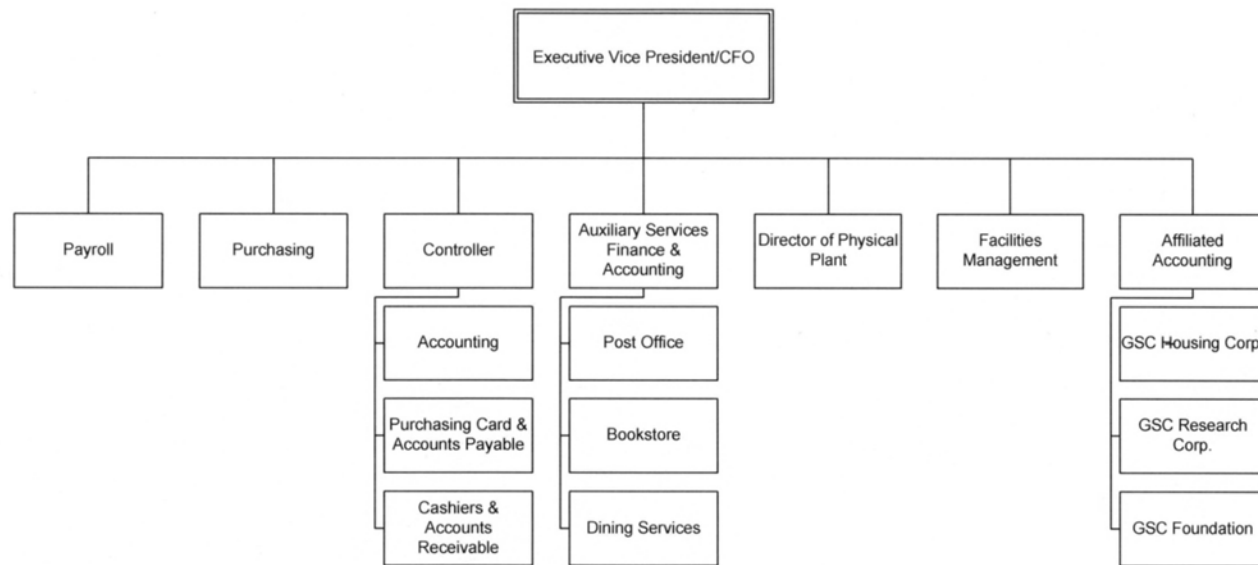
GLENVILLE STATE COLLEGE  
ORGANIZATIONAL CHART  
Senior Vice President for  
External Relations



Updated 11/18/11



GLENVILLE STATE COLLEGE  
ORGANIZATIONAL CHART  
Executive Vice President of Finance/CFO



Updated 11/08/11

### Committee Membership – 2012-2013

<b>Academic Appeals</b>	<b>Academic Policy</b>	<b>Assessment Committee</b>	<b>Athletic Committee</b>
Ann Reed, Chair & Adm. Liaison	Kevin Evans, Chair	Ross Conover, Chair	Janet Bailey, Chair /Adm. Liaison
Michael Curtis	Nancy Zane, Vice-Chair	Neal Benson	Mary Alltop
Alan Daniel	Chuck Batson	Shara Curry	Duane Chapman
Art DeMatteo	Teresa Dody	Teresa Dody	Mandy Frymier
David Lewis	John Taylor	J Morgan	Bob Hardman
Jonathan Minton	Kelly Treece	Brian Perkins	Marcal Lazenby
Jared Wilson	Jared Wilson	Mike Smith	Ida Mills
Alison Witte (Alternate)	McKenzie Rose	Rebecca Swisher	Cam Perry
Joseph Wood (Alternate)	Cody Sheldon	Boris Nimcevic	Shelly Ratliff
	John Peek, Adm. Liaison	Megan Prater	Jim Tatman
		John Peek, Adm. Liaison	Ed Wood
			Samantha Fulks
			Nathan Lilly
			Ella Messinger
			Travis Nesbitt

<b>College Leadership Council</b>	<b>Commencement/Convocation</b>	<b>Curriculum Committee</b>	<b>Diversity Committee</b>
John Peek, Chair & Adm. Liaison	John Peek, Chair	Kevin Cain, Chair	John Peek, Chair & Adm. Liaison
David O'Dell, Vice Chair	Jerry Burkhammer	Milan Vavrek, Vice-Chair	Jerry Burkhammer
Janet Bailey	Wayne deRosset	Chuck Batson	Dwight Heaster
Lloyd Bone	Denise Ellyson	Lloyd Bone	Andrew Lewis
Wayne deRosset	Lois Miller	Tara Cosco	Kenny Fisher
Cinda Echard	Deb Nagy	Wayne de Rosset	Victoria Vineyard
Denise Ellyson	Tom Ratliff	Denise Ellyson	
Kevin Evans	Teresa Sterns	Sherry Jones	
Bob Hardman	David Millard, Adm. Liaison	Gary Morris	
Ann Reed		Sara Sawyer	
Jim Tatman		Dennis Wemm	
Ed Wood		Ed Wood	
Travis Nesbitt		Vincent Nolte	
Shane Lehman		Megan Prater	
		John Peek, Adm. Liaison	

### Committee Membership – 2012-2013

<b>Enrollment Management</b>	<b>Facilities Committee</b>	<b>Faculty Development</b>	<b>Faculty Senate</b>
Duane Chapman, Chair/Adm. Liaison	Tom Ratliff, Chair/Adm. Liaison	Milan Vavrek, Chair	David O' Dell, President
Janet Bailey	Betsy Barr	Carmine Grieco	Gary Arbogast
Jerry Burkhammer	Jerry Burkhammer	George Hoshell	Larry Baker
Adrian Duelle	Bob Hardman	David Lewis	Liza Brenner
Karen Lay	Debra Nagy	Jonathan Minton	Art DeMatteo
Mark Mills	John Peek	Brad Reed	Cinda Echard
Jessie Patterson	Jason Phares	Sara Sawyer	Kevin Evans
Paul Peck	James Spears	Jared Wilson	Rico Gazal
Sarah Ratliff	Jerry Milliken	John Peek, Adm. Liaison	Megan Gibbons
Trae Sprague	Milan Vavrek		Ida Mills
Deb Nagy	Dennis Wemm		Jonathan Minton
John Peek	Travis Nesbitt		Paul Peck
Jason Phares	Debi Jenkins, Secretary		Shelly Ratliff
Travis Nesbitt			John Taylor
			Dennis Wemm
			Milan Vavrek
			Joseph Wood
			John Peek, Adm. Liaison

<b>Financial Aid Appeals</b>	<b>Homecoming</b>	<b>International Committee</b>	<b>Institutional Review Board</b>
Karen Lay, Chair & Adm. Liaison	Deb Nagy, Chair	John Peek, Chair & Adm. Liaison	Ida Mills, Chair
Glenn Abraham	Annette Barnette	Duane Chapman	Alan Daniel
Robin Cottrill	Janet Bailey / Cam Perry	Megan Gibbons	Sara Sawyer
Ashley Haddox	Lloyd Bone	Jon Minton	Tammy Stewart
John Taylor	Dustin Crutchfield	Daniel Sambu	John Taylor
Ann Reed	Wayne de Rosset	Ed Wood	John Peek, Adm. Liaison
	Andrew Lewis	Dejana Ludoski	
	Jodi Ocheltree	Lindsay Morgan	
	T Ratliff / T Marks / T Wellings	Boris Nimcevic	
	SGA Officers	Jessie Patterson	
	Jerry Burkhammer, Adm. Liaison		

### Committee Membership – 2012-2013

<b>Judicial Council</b>	<b>Library Advisory Committee</b>	<b>Promotion &amp; Tenure</b>	<b>Scholarship</b>
Heather Allman	Melissa Gish, Chair	Larry Baker	Karen Lay, Chair & Adm. Liaison
Larry Baker	Shara Curry	Jonathan Minton	Lloyd Bone
Avan McHenry	Megan Darby	John Taylor	Duane Chapman
Matthew Sisk	Jane Friedmann	Milan Vavrek	Gary Morris
Nico Mills	George Hoshell	Fred Walborn	Denny Pounds
Staci Moore	Cheryl McKinney	Nancy Zane (alternate)	Ashley Weir
Cody Sheldon	Rick Sypolt	John Peek, Adm. Liaison	
Jerry Burkhammer, Adm. Liaison	Gail Westbrook		
	Alison Witte		
	Clinton Carr		
	Staci Moore		
	John Peek, Adm. Liaison		

<b>Staff Council</b>	<b>Student Government Association</b>	<b>Student Life</b>	
Jim Tatman, President	Travis Nesbitt, President	Jerry Burkhammer, Chair & Adm. Liaison	
Mary Alltop	Marc Jones, Vice President	Heather Allman	
Carla Conley	Katrina Adkins	Larry Baker	
Brittany Frymier	Nate Bolin	Avan McHenry	
Mindy Greathouse	Shane Lehman	Shelly Ratliff	
Debi Jenkins	Lindsay Morgan	Matthew Sisk	
Lois Miller	Megan Prater	Connie Stout	
Jason Phares	Cody Sheldon	Shane Lehman	
Ann Reed	Jerry Burkhammer, Adm. Liaison	Nico Mills	
Sheri Skidmore		Staci Moore	
Eric Squires		Travis Nesbitt	
Gail Westbrook		Cody Sheldon	
Krystal Smith, Adm. Liaison			

## Committee Membership – 2012-2013

Ad hoc Committees			
John Peek, Administrative Liaison			
General Education Task Force	Online Program Team	Radio-TV Planning	Textbook Affordability
John Taylor, Chair	John Peek, Chair	John Peek, Chair	John Peek, Chair
Jason Barr	Heather Allman	Annette Barnette	Liza Brenner
Kevin Evans	Gary Arbogast	Jerry Burkhammer	Jerry Burkhammer
Rico Gazal	Liza Brenner	Jason Phares	Melissa Gish
Mike Gherke	Rico Gazal	Marjorie Stewart	Dwight Heaster
Sherry Jones	Annaliza Marks	Dennis Wemm	Diana Milam
Dennis Wemm	Avan McHenry	Jennifer Wenner	Gail Westbrook
	Carmine Grieco	Travis Nesbitt	Staci Moore
	Mark Mills		Travis Nesbitt
	J Morgan		
	Daniel Sambu		



