



GLENVILLE
STATE COLLEGE

Fact Book

2013

Table of Contents

Enrollment Trends	Page
Fall	
Fall Enrollment by Class	1
First-Time Freshmen	2
First-Time Freshmen – Baccalaureate Program	3
First-Time Freshmen – Associate Program	4
New Transfers	5
New Transfers – Baccalaureate Program Enrollment	6
New Transfers – Associate Program Enrollment	6
Total Headcount & FTE by Course Location	7
Total Headcount & FTE by Online Courses	7
Fall Enrollment Headcount Comparison	8
Fall Enrollment FTE Comparison	8
Applicants Accepted and Enrolled – All students	9
Applicants Accepted and Enrolled – First-Time Freshmen	10
Applicants Accepted and Enrolled – Transfer Students	11
Applicants Accepted and Enrolled – Re-Admit Students	12
Spring	
Spring Enrollment by Class	13
FTE by Spring Semesters	13
New First-Time Freshmen for Spring	14
New First-Time Freshmen for Spring – Baccalaureate Program	15
New First-Time Freshmen for Spring – Associate Program	15
New Transfers for Spring	16
New Transfers for Spring – Baccalaureate Program	17
New Transfers for Spring – Associate Program	17
Summer	
Summer Enrollment by Class	18
FTE by Summer Semesters	18

Retention
Rates

Fall to Fall

Retention of First-Time, Full-Time Students , Fall – Fall	19
Retention of All Students – Degree & Non-Degree Seeking, Fall – Fall	19
Full-Time Students Retention Baccalaureate Program, Fall – Fall	20
Full-Time Students Retention Associate Program, Fall – Fall	20

Fall to Spring

Retention of First-Time, Full-Time Students , Fall – Spring	21
Retention of All Students – Degree & Non-Degree Seeking, Fall – Spring	21
Full-Time Students Retention Baccalaureate Program, Fall – Spring	22
Full-Time Students Retention Associate Program, Fall – Spring	22

Spring to Fall

Retention of First-Time, Full-Time Students – Spring Admits, Spring – Fall	23
Retention of All Students – Degree & Non-Degree Seeking, Spring – Fall	23
Full-Time Students Retention Baccalaureate Program, Spring – Fall	24
Full-Time Students Retention Associate Program, Spring – Fall	24

Graduation

Six Year Graduation Rates (First-Time, Full-Time)	25
Five Year Graduation Rates (First-Time, Full-Time)	25
Four Year Graduation Rates (First-Time, Full-Time)	25
Six Year Graduation Rates (received Athletic Related Financial Aid)	26

Program
Profile

Full-Time Enrollment by Degree Program	27
Part-Time Enrollment by Degree Program	28
Enrollment by Academic Program	29
Graduation by Academic Program	32
Degrees Conferred	35

Student Profile

Student Profile Summary	36
Enrollment by Gender	37
Enrollment by State of Residence	38
Enrollment by Ethnicity	39
Average Age of All Students	40
Students Age 25 and Older – All	40
Students Age 25 and Older – All Freshmen	41
Students Age 25 and Older – Part-Time	41
ACT Scores and SAT Scores – Fall	42
ACT Scores and SAT Scores – Spring Admits	43
Grade Point Averages – Semester	44
Grade Point Averages – Cumulative	44
Enrollment in One or More Developmental Courses - Fall	45
Enrollment in One or More Developmental Courses –Spring Admits	45
West Virginia County Enrollment – Top 25 by number Enrolled	46
West Virginia County Enrollment – by County	47
Residence Hall Occupancy Rates	49

Faculty Profile

Student/Faculty Ratios	50
Full-Time Faculty by Academic Rank	51
Full-Time Faculty by Tenure Status	51
Full-Time Faculty by Highest Degree Held	52
Part-Time Faculty by Highest Degree Held	53
Full-Time Faculty by Gender	54
Full-Time Faculty by Ethnicity	55
Full Time Instructional Faculty – Average Nine-Month Salary	56

Financial

Semester Tuition and Fees	57
Annual Tuition Comparisons	57

Revenue Summarized	58
Educational and General (E&G) Expenditures Summarized	59
Financial Aid Summary, First-Time Freshman	60
Financial Aid Processed	60
Organizational Charts	
Board of Governors, President, and Executive Staff	61
Academic and Student Affairs	62
External Relations	63
Business & Finance	64
Committees	
Academic Appeals, Academic Policy, Assessment, Athletic, College Leadership, Commencement/Convocation, Curriculum, Enrollment Management	65
Facilities, Faculty Development, Faculty Senate, Financial Aid Appeals, Homecoming, International, Judicial Council, Library Advisory	66
Promotion & Tenure, Retention, Scholarship, Staff Council, Student Government Association, Student Life	67
Default Management, Diversity, Early Intervention Team, Institutional Review Board, Media, Pioneer Showcase, Retention Study Team, Strategic Planning Team	68
Textbook Affordability	69
<p>Fall reporting posted in October 2013 to</p> <p>IPEDS Integrated Postsecondary Education Data System</p> <p>HEPC West Virginia Higher Education Policy Commission</p>	

Fall Enrollment by Class

Class	2007	2008	2009	2010	2011	2012	2013
Freshman	446	487	569	708	682	680	573
Sophomore	182	204	180	247	264	225	220
Junior	181	165	161	157	226	199	185
Senior	333	331	323	331	308	334	287
Non-Degree ¹	299	256	488	385	377	460	585
Total Headcount	1441	1443	1721	1828	1857	1898	1850

Percentage of Fall Enrollment by Class

Class	2007	2008	2009	2010	2011	2012	2013
Freshman	31%	34%	33%	39%	37%	36%	31%
Sophomore	13%	14%	10%	13%	14%	12%	12%
Junior	13%	11%	9%	9%	12%	10%	10%
Senior	23%	23%	19%	18%	17%	18%	16%
Non-Degree ¹	20%	18%	28%	21%	20%	24%	31%
Total Headcount	1441	1443	1721	1828	1857	1898	1850

¹ Students not seeking a degree and high school early entrance students.

First-Time Freshmen

Term	Enrolled Full-Time	Male	Female	Enrolled Part-Time	Male	Female	Total Enrolled
Fall 2007	285	150	135	6	3	3	291
Fall 2008	302	175	127	1	0	1	303
Fall 2009	329	175	154	2	0	2	331
Fall 2010	313	172	141	103 ¹	93	10	416
Fall 2011	284	182	102	71	60	11	355
Fall 2012	339	224	115	61	55	6	400
Fall 2013	280	163	117	35	19	16	315

¹ New off-site associate degree programs at Federal Corrections Institution (FCI) Gilmer and for West Virginia Department of Military Affairs and Public Safety (DMAPS).

First-Time Freshmen - Baccalaureate Program

Term	Enrolled Full-Time	Male	Female	Enrolled Part-Time	Male	Female	Total Enrolled
Fall 2007	269	139	130	6	3	3	275
Fall 2008	278	158	120	1	0	1	279
Fall 2009	291	155	136	0	0	0	291
Fall 2010 ¹	149	85	77	1	0	1	150
Fall 2011	155	91	64	2	2	0	157
Fall 2012	169	112	57	1	0	1	170
Fall 2013	175	96	79	1	1	0	176

¹Adjusted ACT and SAT requirements limiting number of students admitted to a baccalaureate program.

First-Time Freshmen - Associate Program

Term	Enrolled Full-Time	Male	Female	Enrolled Part-Time	Male	Female	Total Enrolled
Fall 2007	16	11	5	0	0	0	16
Fall 2008	24	17	7	0	0	0	24
Fall 2009	38	20	18	2	0	2	40
Fall 2010 ¹	164	87	64	102	93	9	266
Fall 2011	129	91	38	69	58	11	198
Fall 2012	170	112	58	60	55	5	230
Fall 2013	105	67	38	34	18	16	139

¹ Adjusted ACT and SAT requirements limiting number of students admitted to a baccalaureate program.

New Transfers for Fall

Term	Enrolled Full-Time	Male	Female	Enrolled Part-Time	Male	Female	Total Enrolled
Fall 2007	79	49	30	2	2	0	81
Fall 2008	83	50	33	7	4	3	90
Fall 2009	78	50	28	5	2	3	83
Fall 2010	104	54	50	56 ¹	28	28	160
Fall 2011	101	60	41	51	29	22	152
Fall 2012	92	54	38	28	24	4	120
Fall 2013	58	36	22	97	55	42	155

¹West Virginia Department of Military Affairs and Public Safety (DMAPS) transfers into Associate Criminal Justice Program.

New Transfers - Baccalaureate Program

Term	Enrolled Full-Time	Male	Female	Enrolled Part-Time	Male	Female	Total Enrolled
Fall 2007	77	47	30	2	0	2	79
Fall 2008	77	44	33	7	4	3	84
Fall 2009	70	46	24	5	2	3	75
Fall 2010	70	38	32	4	2	2	74
Fall 2011	64	38	26	5	0	5	69
Fall 2012	64	37	27	3	1	2	67
Fall 2013	51	34	17	5	3	2	56

New Transfers - Associate Program

Term	Enrolled Full-Time	Male	Female	Enrolled Part-Time	Male	Female	Total Enrolled
Fall 2007	2	2	0	0	0	0	2
Fall 2008	6	6	0	0	0	0	6
Fall 2009	8	4	4	0	0	0	8
Fall 2010 ¹	34	16	18	52	26	26	86
Fall 2011	37	22	15	46	29	17	83
Fall 2012	28	17	11	25	23	2	53
Fall 2013	7	2	5	92	52	40	99

¹West Virginia Department of Military Affairs and Public Safety (DMAPS) transfers into Associate Criminal Justice Program.

Enrollment by Course Location

Location	Fall 2009		Fall 2010		Fall 2011		Fall 2012		Fall 2013	
	Headcount	FTE	Headcount	FTE	Headcount	FTE	Headcount	FTE	Headcount	FTE
Glenville Campus	1255	1114	1309	1161	1503	1186	1476	1176	1136	1051
FCI Gilmer	191	58	203	85	196	69	183	64	107	58
New River ¹	22	9	15	5	11	5	13	6	10	4
High Schools	158	56	185	75	152	42	200	86	236	75

Enrollment by Online Courses

Location	Fall 2009		Fall 2010		Fall 2011		Fall 2012		Fall 2013	
	Headcount	FTE	Headcount	FTE	Headcount	FTE	Headcount	FTE	Headcount	FTE
Glenville Campus	336	88	449	105	415	109	440	120	305	79
DMAPS ²	137	42	131	63	271	65	93	45	227	58
Total	473	130	580	168	686	174	533	165	532	137

¹ 2 + 2 Education Program.

² West Virginia Department of Military Affairs and Public Safety

Fall Enrollment Headcount Comparison

Institution Name	Fall 2007	Fall 2008	Fall 2009	Fall 2010	Fall 2011	Fall 2012	Fall 2013
Bluefield State College	1804	1943	2058	2101	1929	1935	1747
Concord University	2735	2810	2924	2919	2797	2834	2767
Fairmont State University	4464	4554	4572	4708	4617	4451	4232
Glenville State College	1441	1443	1721	1828	1857	1898	1850
Shepherd University	4119	4283	4370	4336	4393	4326	4221
West Liberty State College	2405	2508	2645	2738	2787	2804	2775
West Virginia State University	3218	3110	3971	3239	2827	2644	2677

Fall Enrollment FTE Comparison

Institution Name	Fall 2009	Fall 2010	Fall 2011	Fall 2012	Fall 2013
Bluefield State College	1751	1757	1660	1717	1556
Concord University	2771	2740	2723	2621	2539
Fairmont State University	4036	4125	4023	3939	3745
Glenville State College	1356	1468	1412	1445	1330
Shepherd University	3757	3786	3837	3774	3642
West Liberty State College	2553	2644	2656	2672	2662
West Virginia State University	2697	2475	2259	2108	2158

Applicants Accepted and Enrolled All Students

Term	Applicants	Male	Female	Number Accepted	Enrolled Full-Time	Male	Female	Enrolled Part-Time	Male	Female	Total Enrolled
Fall 2007	1209	617	592	1166	385	209	176	25	5	20	410
Fall 2008	1227	729	498	1070	409	239	170	18	7	11	427
Fall 2009	1165	584	581	1092	446	246	200	11	3	8	457
Fall 2010	1347	696	651	1094	457	247	210	174	130	44	631
Fall 2011	1588	877	711	1345	425	256	169	130	92	38	555
Fall 2012	1568	888	680	1354	472	297	175	116	94	22	588
Fall 2013	1443	725	718	1140	330	197	133	131	73	58	461

Applicants Accepted and Enrolled Conversion Percentages

Term	Accepted to Applicants	Full-Time to Accepted	Part-Time to Accepted	Enrollment to Accepted
Fall 2007	96%	33%	2%	35%
Fall 2008	87%	38%	2%	40%
Fall 2009	94%	41%	1%	42%
Fall 2010	81%	42%	16%	58%
Fall 2011	85%	31%	10%	41%
Fall 2012	86%	35%	8%	43%
Fall 2013	79%	29%	11%	40%

Applicants Accepted and Enrolled First-Time Freshmen

Term	Applicants	Male	Female	Number Accepted	Enrolled Full-Time	Male	Female	Enrolled Part-Time	Male	Female	Total Enrolled
Fall 2007	964	498	466	948	285	150	135	6	3	3	291
Fall 2008	1021	615	406	864	302	175	127	1	0	1	303
Fall 2009	928	463	465	855	329	175	154	2	0	2	331
Fall 2010	1025	529	496	796	313	172	141	103	93	10	416
Fall 2011	1246	690	556	1023	284	182	102	71	60	11	355
Fall 2012	1218	696	522	1024	339	224	115	61	55	6	400
Fall 2013	1198	586	612	892	280	163	117	35	19	16	315

Applicants Accepted and Enrolled Conversion Percentages First-Time Freshmen

Term	Accepted to Applicants	Full-Time to Accepted	Part-Time to Accepted	Enrollment to Accepted
Fall 2007	98%	30%	1%	31%
Fall 2008	85%	35%	0%	35%
Fall 2009	92%	38%	0%	39%
Fall 2010	78%	39%	13%	52%
Fall 2011	82%	28%	7%	35%
Fall 2012	84%	33%	6%	39%
Fall 2013	74%	31%	4%	35%

Applicants Accepted and Enrolled New Transfer Students

Term	Applicants	Male	Female	Number Accepted	Enrolled Full-Time	Male	Female	Enrolled Part-Time	Male	Female	Total Enrolled
Fall 2007	168	92	76	168	79	49	30	2	0	2	81
Fall 2008	156	90	66	156	83	50	33	7	4	3	90
Fall 2009	167	87	80	167	78	50	28	5	2	3	83
Fall 2010	229	123	106	205	104	54	50	56 ¹	28	28	160 ¹
Fall 2011	255	147	108	236	101	60	41	51	29	22	152
Fall 2012	247	140	107	227	92	54	38	28	24	4	120
Fall 2013	240	135	105	224	58	36	22	97	55	42	155

Applicants Accepted and Enrolled Conversion Percentages New Transfer Students

Term	Accepted to Applicants	Full-Time to Accepted	Part-Time to Accepted	Enrollment to Accepted
Fall 2007	100%	47%	1%	48%
Fall 2008	100%	53%	4%	58%
Fall 2009	100%	47%	3%	50%
Fall 2010	89%	51%	27%	78%
Fall 2011	93%	43%	22%	67%
Fall 2012	92%	41%	12%	53%
Fall 2013	93%	26%	43%	69%

¹ Significant Fall 2010 increases reflects enrollment in new degree offerings and enrollment growth at Federal Corrections Institution (FCI) Gilmer and West Virginia Department of Military Affairs and Public Safety (DMAPS).

Applicants Accepted and Enrolled Re-Admit Students

Term	Applicants	Male	Female	Number Accepted	Enrolled Full-Time	Male	Female	Enrolled Part-Time	Male	Female	Total Enrolled
Fall 2007	77	27	50	77	21	10	11	17	2	15	38
Fall 2008	50	24	26	50	24	11	10	10	3	7	34
Fall 2009	70	34	36	70	39	21	18	4	1	3	43
Fall 2010	93	44	49	93	40	21	19	15	9	6	55
Fall 2011	87	40	47	86	40	14	26	8	3	5	48
Fall 2012	103	52	51	103	41	19	22	27	15	12	68
Fall 2013	79	39	40	75	19	8	11	32	19	13	51

Spring Enrollment by Class

Class	2007	2008	2009	2010	2011	2012	2013
Freshman	403	402	471	578	611	544	518
Sophomore	226	207	221	219	264	273	253
Junior	199	181	173	178	213	222	200
Senior	327	353	334	344	338	364	344
Non-Degree	96	97	108	190	160	155	245
Total Headcount	1251	1240	1307	1509	1586	1558	1560

FTE by Spring Semesters

Term	2007	2008	2009	2010	2011	2012	2013
Spring	1079	1088	1163	1294	1340	1271	1245

New First-Time Freshmen for Spring

Term	Enrolled Full-Time	Male	Female	Enrolled Part-Time	Male	Female	Total Enrolled
Spring 2008	24	14	10	4	1	3	28
Spring 2009	30	21	9	0	0	0	30
Spring 2010	33	18	15	3	1	2	36
Spring 2011	41	26	15	29	26	3	70
Spring 2012	22	11	11	49	39	10	71
Spring 2013	30	16	14	5	1	4	35

New First-Time Freshmen for Spring - Baccalaureate Program

Term	Enrolled Full-Time	Male	Female	Enrolled Part-Time	Male	Female	Total Enrolled
Spring 2008	22	12	10	4	1	3	26
Spring 2009	22	17	5	0	0	0	22
Spring 2010	21	11	10	0	0	0	21
Spring 2011	13	7	6	12	10	2	25
Spring 2012	6	2	4	0	0	0	6
Spring 2013	14	7	7	1	0	1	15

New First-Time Freshmen for Spring – Associate Program

Term	Enrolled Full-Time	Male	Female	Enrolled Part-Time	Male	Female	Total Enrolled
Spring 2008	14	10	4	0	0	0	14
Spring 2009	8	4	4	0	0	0	8
Spring 2010	12	7	5	2	0	2	14
Spring 2011	28	19	9	17	16	1	45
Spring 2012	16	9	7	49	39	10	65
Spring 2013	16	9	7	4	1	3	20

New Transfers for Spring

Term	Enrolled Full-Time	Male	Female	Enrolled Part-Time	Male	Female	Total Enrolled
Spring 2008	25	9	16	3	2	1	28
Spring 2009	15	8	7	5	1	4	20
Spring 2010	32	24	8	1	1	0	33
Spring 2011	61	37	24	26	17	9	87
Spring 2012	39	24	15	30	26	4	69
Spring 2013	46	17	29	8	3	5	54

New Transfers for Spring - Baccalaureate Program

Term	Enrolled Full-Time	Male	Female	Enrolled Part-Time	Male	Female	Total Enrolled
Spring 2008	24	9	15	3	2	1	27
Spring 2009	13	6	7	5	1	4	18
Spring 2010	26	22	4	1	1	0	27
Spring 2011	40	20	20	16	8	8	56
Spring 2012	14	7	7	2	0	2	16
Spring 2013	35	15	20	3	0	3	38

New Transfers for Spring - Associate Program

Term	Enrolled Full-Time	Male	Female	Enrolled Part-Time	Male	Female	Total Enrolled
Spring 2008	1	0	1	0	0	0	1
Spring 2009	2	2	0	0	0	0	2
Spring 2010	6	2	4	0	0	0	6
Spring 2011	21	17	4	10	9	1	31
Spring 2012	25	17	8	23	22	1	48
Spring 2013	11	2	9	5	3	2	16

Summer Enrollment by Class

Class	2007	2008	2009	2010	2011	2012	2013
Freshman	32	44	161	201	188	162	34
Sophomore	37	75	72	115	113	107	61
Junior	52	83	60	58	82	65	55
Senior	122	126	115	125	146	142	94
Non-Degree	8	95	0	43	18	80	32
Headcount Total	251	423	422	542	547	556	276

FTE by Summer Semesters

Term	2007	2008	2009	2010	2011	2012	2013
Summer	90	116	138	192	208	182	80

Retention of First-Time, Full-Time Students
Fall to Fall

	2007 to 2008	2008 to 2009	2009 to 2010	2010 to 2011	2011 to 2012	2012 to 2013
Bachelor's	56%	56%	58%	70% ¹	65%	63%
Associate's	50%	38%	55%	48%	36%	47%
Total	56%	55%	58%	59%	52%	55%

Retention of All Students
Fall to Fall

	2007 to 2008	2008 to 2009	2009 to 2010	2010 to 2011	2011 to 2012	2012 to 2013
Degree Seeking	53%	56%	64%	50%	49%	49%
Degree and Non-Degree Seeking	53%	56%	53%	53%	48%	46%

¹Increased criteria – based associate degree placement.

Full-Time Students - Baccalaureate Retention
Fall to Fall

	2007 - 2008	2008 - 2009	2009 - 2010	2010 - 2011	2011 - 2012	2012 - 2013
First-Time Freshmen	56%	56%	58%	70% ¹	65%	63%
All Freshmen	53%	63%	66%	68%	66%	62%
Sophomore	73%	71%	79%	82%	76%	76%
Junior	72%	78%	78%	84%	81%	81%

Full-Time Students - Associate Retention
Fall to Fall

	2007 - 2008	2008 - 2009	2009 - 2010	2010 - 2011	2011 - 2012	2012 - 2013
First-Time Freshmen	50%	38%	55%	47%	36%	47%
All Freshmen	49%	45%	62%	46%	44%	50%
Sophomore	67%	71%	78%	69%	61%	61%

¹Increased criteria – based associate degree placement.

Retention of First-Time, Full-Time Students
Fall to Spring

	2007 to 2008	2008 to 2009	2009 to 2010	2010 to 2011	2011 to 2012	2012 to 2013
Bachelor's	80%	88%	83%	87%	83%	86%
Associate's	75%	79%	84%	75%	77%	75%
Total	80%	87%	83%	81%	80%	80%

Retention of All Students
Fall to Spring

	2007 to 2008	2008 to 2009	2009 to 2010	2010 to 2011	2011 to 2012	2012 to 2013
Degree Seeking	75%	78%	81%	75%	78%	79%
Degree and Non-Degree Seeking	53%	56%	53%	53%	68%	68%

Full-Time Students - Baccalaureate Retention
Fall to Spring

	2007 - 2008	2008 - 2009	2009 - 2010	2010 - 2011	2011 - 2012	2012 - 2013
First-Time Freshmen	80%	88%	83%	87%	83%	86%
All Freshmen	80%	90%	83%	83%	83%	84%
Sophomore	83%	85%	85%	90%	92%	88%
Junior	95%	92%	93%	90%	91%	92%

Full-Time Students - Associate Retention
Fall to Spring

	2007 - 2008	2008 - 2009	2009 - 2010	2010 - 2011	2011 - 2012	2012 - 2013
First-Time Freshmen	75%	79%	84%	75%	77%	75%
All Freshmen	73%	80%	85%	73%	74%	75%
Sophomore	100%	85%	100%	95%	77%	82%

Retention of First-Time, Full-Time Students – Spring Admits
Spring to Fall

	2007	2008	2009	2010	2011	2012	2013
Bachelor's	39%	52%	59%	57%	54%	67%	36%
Associate's	50%	29%	50%	33%	57%	56%	69%
Total	40%	51%	57%	48%	56%	59%	53%

Retention of All Students
Spring to Fall

	2007	2008	2009	2010	2011	2012	2013
Degree Seeking	66%	41%	63%	69%	67%	64%	61%
Degree and Non-Degree Seeking	66%	64%	63%	65%	65%	60%	58%

Full-Time Students - Baccalaureate Retention
Spring to Fall

	2007 - 2007	2008 - 2008	2009 - 2009	2010 - 2010	2011 - 2011	2012 - 2012	2013 - 2013
All Freshmen	62%	65%	65%	69%	72%	69%	66%
Sophomore	69%	75%	77%	90%	88%	90%	84%
Junior	82%	73%	77%	85%	93%	79%	89%

Full-Time Students - Associate Retention
Spring to Fall

	2007 - 2007	2008 - 2008	2009 - 2009	2010 - 2010	2011 - 2011	2012 - 2012	2013 - 2013
All Freshmen	33%	70%	44%	61%	55%	52%	62%
Sophomore	59%	59%	55%	58%	70%	76%	78%

Six-Year Graduation Rates

Started and Completed at Same Institution

	First-Time, Full-Time Students (Entering Year)						
	2001	2002	2003	2004	2005	2006	2007
Glenville State College Baccalaureate	25%	26%	33%	28%	30%	31%	29%
All WV State Colleges Baccalaureate Avg.	43%	45%	46%	45%	45%	45%	44%

Five-Year Graduation Rates

Started and Completed at Same Institution

	First-Time, Full-Time Students (Entering Year)						
	2002	2003	2004	2005	2006	2007	2008
Glenville State College	25%	26%	25%	24%	26%	25%	23%

Four-Year Graduation Rates

Started and Completed at Same Institution

	First-Time, Full-Time Students (Entering Year)						
	2003	2004	2005	2006	2007	2008	2009
Glenville State College	14%	26%	16%	18%	13%	11%	16%

Six-Year Graduation Rates
Baccalaureate Students Receiving Athletic-Related Financial Aid (Entering Year)

Entering Year	First-Time Full-Time Freshmen	Certificate or Associates Received	Bachelors Received	Percentage
Fall 1997	17	1	5	35.3%
Fall 1998	51	0	23	45.1%
Fall 1999	51	0	18	35.3%
Fall 2000	43	0	18	41.9%
Fall 2001	45	0	18	40.0%
Fall 2002	41	0	19	46.3%
Fall 2003	37	1	10	29.7%
Fall 2004	47	1	19	42.6%
Fall 2005	65	0	19	29.0%
Fall 2006	68	0	23	33.8%

Full-Time Enrollment by Degree Program

Term		Total
Fall 2007		1078
	<i>Associate</i>	43
	<i>Baccalaureate</i>	1035
	<i>Non-Degree</i>	0
Fall 2008		1123
	<i>Associate</i>	57
	<i>Baccalaureate</i>	1066
	<i>Non-Degree</i>	0
Fall 2009		1156
	<i>Associate</i>	71
	<i>Baccalaureate</i>	1070
	<i>Non-Degree</i>	15
Fall 2010 ¹		1277
	<i>Associate</i>	324
	<i>Baccalaureate</i>	938
	<i>Non-Degree</i>	15
Fall 2011		1188
	<i>Associate</i>	290
	<i>Baccalaureate</i>	897
	<i>Non-Degree</i>	1
Fall 2012		1232
	<i>Associate</i>	331
	<i>Baccalaureate</i>	859
	<i>Non-Degree</i>	42
Fall 2013		1114
	<i>Associate</i>	265
	<i>Baccalaureate</i>	828
	<i>Non-Degree</i>	21

¹ Students with low test scores & GPA or deficient HS course work assigned to associate program.

Part-Time Enrollment by Degree Program

Term		Total
Fall 2007		363
	Associate	9
	Baccalaureate	354
	Non-Degree	0
Fall 2008		320
	Associate	1
	Baccalaureate	319
	Non-Degree	0
Fall 2009		565
	Associate	3
	Baccalaureate	47
	Non-Degree	515
Fall 2010 ¹		551
	Associate	330
	Baccalaureate	47
	Non-Degree	174
Fall 2011		669
	Associate	307
	Baccalaureate	55
	Non-Degree ²	307
Fall 2012		666
	Associate	271
	Baccalaureate	50
	Non-Degree	345
Fall 2013		736
	Associate	311
	Baccalaureate	53
	Non-Degree	372

¹ Adjusted ACT and SAT requirements limiting number of students admitted to a baccalaureate program.

² Includes more DMAPS students.

Enrollment by Academic Program

Program	Fall 2006	Fall 2007	Fall 2008	Fall 2009	Fall 2010	Fall 2011	Fall 2012	Fall 2013
Art (BA) (Start 2012)	NA	NA	NA	NA	NA	NA	5	13
Behavioral Sciences								
Behavioral Science (BSBS) (end 2001 as major)	3	0	1	NA	NA	NA	NA	NA
Basic & Applied Psychology (end 2001)	16	5	2	1	NA	NA	NA	NA
Criminal Justice (BSBS)	104	109	97	59	36	14	10	1
Psychology/Sociology	67	77	85	76	82	94	93	96
Total	190	191	185	136	118	108	103	97
Biology (BS)								
	44	49	50	43	55	51	41	33
Business Administration								
Accounting (BSBA)	29	39	45	27	19	25	34	33
Computer Science/Information Systems (BSBA)	19	18	18	14	15	23	24	27
Management (BSBA)	87	90	87	71	66	64	42	50
Marketing (BSBA)	26	21	21	19	23	20	14	10
Resort Area Management (BSBA)(start 2005)	0	0	0	4	5	4	4	6
Sport Management (BS) (start 2005)	26	54	44	52	57	49	65	71
Total	187	222	215	187	185	185	183	197
Business Management (BS) (2+2 Program)								
	8	1	0	4	5	5	2	0
Chemistry (BA)								
	19	16	13	15	18	8	6	6
Criminal Justice (BS) (Start 2009)								
	NA	NA	NA	41	53	77	85	95

Enrollment by Academic Program (continued)

Program	Fall 2006	Fall 2007	Fall 2008	Fall 2009	Fall 2010	Fall 2011	Fall 2012	Fall 2013
Education								
Biological Science (9-adult) (BAED)	5	5	7	5	2	6	6	3
Business Ed Comprehensive (5-adult) (BAED)	4	5	6	5	5	7	7	4
Chemistry (9-adult) (BAED)	3	3	13	1	1	4	2	1
Chemistry & Physics (9-adult) (BAED)	1	1	0	1	2	2	3	3
Early Education (PreK-K) (BAED)	51	96	85	88	102	76	19 ¹	1
Elementary Education (K-6) (BAED)	76	2	41	8	7	7	85 ¹	102
English (5-9) (BAED)	6	12	8	13	16	6	1	0
English (5-adult) (BAED)	18	19	25	20	24	22	14	16
General Science (5-9) (BAED)	5	4	1	3	3	3	0	0
General Science (5-adult) (BAED)	2	1	1	4	5	5	3	1
Health (5-adult) (end 2010)	0	0	0	2	3	2	2	NA
Health/Physical Education (PreK-adult)(start 2008)	NA	NA	NA	12	24	33	25	22
Math (5-9) (General Math/Algebra) (BAED)	4	10	11	10	11	7	1	1
Math (5-adult) (BAED)	12	14	10	11	13	10	13	12
Multi-Categorical (K-6) (start 2006)	0	0	0	25	20	22	7	0
Multi-Categorical (Special Ed) (K-adult)(end 2006)	18	29	29	3	1	1	0	0
Music (non-specified) (BAED)(PreK-adult)	46	42	45	33	35	34	34	28
Physical Education (PreK-adult) (BAED)	60	56	54	51	26	13	4	1
Social Studies (5-adult) (BAED)	40	36	33	31	31	30	33	27
Social Studies (5-9) (BAED)	9	12	7	13	9	7	1	1
Spanish (5-adult) (BAED)(start 2008)	NA	NA	0	1	3	4	1	2
Total	363	347	376	340	343	301	261	225
English (BA)	17	14	19	17	16	22	16	14
History (BA) (renamed 2009)	17	15	18	19	12	6	2	0
History & Political Science (BA) (new code 2009)	NA	NA	NA	NA	4	6	12	14

Enrollment by Academic Program (continued)

Program	Fall 2006	Fall 2007	Fall 2008	Fall 2009	Fall 2010	Fall 2011	Fall 2012	Fall 2013
Interdisciplinary Studies (BA/BS)	1	0	1	0	0	1	1	1
Music (BA) (new 2007)	NA	0	0	9	12	16	14	18
Natural Resource Management (BS)	90	104	106	97	110	111	114	123
Nursing (Pre-Nursing)	55	60	47	24	34	27	26	18
Regents Bachelor of Arts (BORBA)	8	16	9	12	10	18	21	13
Undeclared	59	35	61	51	9 ¹	10	18	14
Associate Programs								
Criminal Justice (AS)	12	7	9	13	193 ²	146	132	251
Forest Technology (AS)	29	18	13	8	13	12	14	16
General Business (AA)	15	16	27	18	227 ²	247	226	158
General Studies (AA)	20	16	21	143	206	176	210	139
Land Surveying (AS)	12	12	14	13	15	16	19	10
Total	88	69	84	195	654	597	601	574
Non-Degree Seeking	238	286	263	541	190 ²	308	387	395
Total Headcount	1381	1441	1443	1721	1828	1857	1898	1850

¹ Classification changed to work better during the evaluation process for Degree Works.

² FCI (AA Business) and DMAP (AS Criminal Justice) students entered as degree seeking.

Graduation by Academic Programs

Program	2006-07	2007-08	2008-09	2009-10	2010-11	2011-12	2012-13
Behavioral Science (BS)	2	6	1	0	0	0	1
Psychology/Sociology	9	4	19	14	16	18	24
Criminal Justice	10	9	17	13	13	9	3
Basic & Applied Psychology (<i>discontinued</i>)	7	1	3	2	0	0	0
Total	28	20	40	29	29	27	28
Biology (BS)	5	3	8	6	3	4	5
Business Administration (BSBA)							
Accounting (BSBA)	5	3	16	2	6	4	4
General Business (BSBA)	1	0	0	0	0	0	0
Computer and Information Systems (BSBA)	3	1	2	3	2	0	6
Management (BSBA)	18	5	13	8	11	13	7
Marketing (BSBA)	7	4	1	2	4	1	5
Resort Area Management	0	0	0	0	0	1	0
Sport Management (BA) (<i>discontinued 2001</i>)	3	0	3	1	4	0	0
Sport Management (BS) (<i>start 2005</i>)	0	0	0	0	0	6	9
Total	37	13	35	16	27	27	31
Business Management (BS) (2+2 Program)	0	0	0	0	0	2	0
Chemistry (BA)	6	5	5	0	4	1	2
Criminal Justice (BS) (<i>Start Aug 2009</i>)	NA	NA	NA	1	1	0	18
Education							
Biological Science (9-Adult)	0	0	0	1	0	1	1
Business Ed Comprehensive (5-Adult) (BAED)	0	1	0	2	2	0	1
Chemistry (9-12) (BAED)	2	1	0	0	0	0	0
Early Education (PreK-K) (BAED)	11	14	10	11	23	18	6
Elementary Education (BAED)	3	11	0	1	1	0	9
English (5-Adult) (BAED)	6	1	5	0	4	2	3

Graduation by Academic Programs (continued)

Program	2006-07	2007-08	2008-09	2009-10	2010-11	2011-12	2012-13
Education (continued)							
English (5-9) (BAED)	1	0	4	2	4	1	0
General Science (5-Adult) (BAED)	0	0	0	0	0	1	2
General Science (5-9) (BAED)	1	1	1	0	1	0	0
Health/Physical Education (PreK-Adult)(BAED)	NA	NA	NA	NA	0	1	4
Math (5-Adult) (BAED)	0	0	2	2	3	1	1
Math (5-9) (BAED)	1	0	2	3	2	1	1
Multi-Categorical (K-Adult) (BAED)(End 2006)	8	6	6	5	0	0	0
Multi-Categorical (K-6) (BAED)	0	1	0	1	4	2	1
Music (PreK-Adult) (BAED)	6	8	2	1	4	5	5
Physical Education (PreK-Adult) (BAED)	3	5	6	4	2	4	0
Social Studies (5-Adult) (BAED)	9	2	4	3	7	1	3
Social Studies (5-9) (BAED)	0	0	0	1	1	0	2
Spanish Education (BAED)(Start 2009)	NA	NA	NA	0	0	1	0
Total	51	51	42	37	58	39	39
English (BA)	8	0	1	1	3	3	2
History (BA)	8	2	7	3	2	2	0
History Political Science (<i>new major code</i>)	0	0	0	1	1	1	1
Interdisciplinary Studies (BA/BS)	0	0	1	1	0	1	2
Music	0	0	1	3	1	5	2
Natural Resource Management (BS)	11	21	28	15	16	19	24
Regents Bachelor of Arts (BORBA)	16	8	16	20	16	22	20

Graduation by Academic Programs (continued)

Program	2006-07	2007-08	2008-09	2009-10	2010-11	2011-12	2012-13
Associate Degrees							
Administrative Science (<i>discontinued 2004</i>)	0	2	0	0	0	0	0
General Business	3	2	12	8	18	27	7
Criminal Justice (AS)	2	2	1	2	0	12	10
Forest Technology (AS)	12	10	12	7	9	12	8
General Studies (AA)	5	20	3	2	1	3	1
Land Surveying (AS)	9	2	7	10	8	4	5
Paralegal Technology (AS)(<i>discontinued</i>)	0	1	0	0	0	0	0
Total	32	39	35	29	36	58	31
Grand Total	215	164	219	161	197	209	205

Degrees Conferred

Degree Type	2006-07	2007-08	2008-09	2009-10	2010-11	2011-12	2012-13
Associate Degree	32	30	31	29	36	58	31
Baccalaureate Degree	182	188	179	132	161	151	174
Total	214	218	210	161	197	209	205

Student Profile														
Fall 2007 – Fall 2013														
	Fall 2007		Fall 2008		Fall 2009		Fall 2010		Fall 2011		Fall 2012		Fall 2013	
	Number	Percent	Number	Percent	Number	Percent	Number	Percent	Number	Percent	Number	Percent	Number	Percent
Students Total	1441	100%	1443	100%	1721	100%	1828	100%	1857	100%	1898	100%	1850	100%
Gender														
Male	742	51%	813	56%	978	57%	1010	55%	1078	58%	1117	59%	1055	57%
Female	699	49%	630	44%	743	43%	818	45%	779	42%	781	41%	795	43%
Residence														
WV Resident	1268	88%	1272	88%	1547	90%	1624	89%	1630	88%	1607	85%	1582	86%
Non-Resident	173	12%	171	12%	174	10%	204	11%	227	12%	291	15%	268	14%
Attendance Status														
Full-Time	1078	75%	1123	78%	1156	67%	1277	70%	1188	64%	1232	65%	1114	60%
Part-Time	363	25%	320	22%	565	33%	551	30%	667	36%	666	35%	736	40%
Ethnicity														
White	1235	85%	1160	80%	1424	83%	1508	82%	1452	78%	1484	78%	1522	82%
African-Amer.	181	13%	254	18%	249	14%	274	15%	302	16%	323	17%	250	14%
Other*	25	2%	29	2%	48	3%	46	3%	103	6%	91	5%	72	4%
Age														
Under 25	1142	79%	1101	76%	1186	69%	1239	68%	1224	66%	1229	64%	1212	66%
25-29	126	9%	130	9%	174	10%	148	8%	181	10%	209	11%	164	9%
30-39	108	7%	144	10%	223	13%	266	14%	263	14%	258	14%	230	12%
40+	65	5%	68	5%	126	7%	157	9%	189	10%	202	11%	243	13%
Unknown					12	1%	18	1%						

Enrollment by Gender – All Students

Term	Total Enrollment	Males	Females	Percentage Male	Percentage Female
Fall 2007	1441	742	699	51%	49%
Fall 2008	1443	813	630	56%	44%
Fall 2009	1721	978	743	57%	43%
Fall 2010	1828	1010	818	55%	45%
Fall 2011	1857	1078	779	58%	42%
Fall 2012	1898	1117	781	59%	41%
Fall 2013	1850	1055	795	57%	43%

Enrollment by Gender – Excluding FCI & DMAPS

Term	Total Enrollment	Males	Females	Percentage Male	Percentage Female
Fall 2007	1339	640	699	48%	52%
Fall 2008	1281	652	629	51%	49%
Fall 2009	1351	679	672	50%	50%
Fall 2010	1449	718	731	50%	50%
Fall 2011	1413	733	680	52%	48%
Fall 2012	1455	771	684	53%	47%
Fall 2013	1389	718	671	52%	48%

Enrollment By State of Residence

Fall

Home of Residence	2007	2008	2009	2010	2011	2012	2013
Alabama	2	4	2	1	1	3	2
California	9	7	7	11	6	12	20
District of Columbia	3	9	8	14	30	41	33
Florida	17	18	15	20	13	15	10
Georgia	6	4	6	4	8	6	3
Illinois	1	1	2	8	6	9	5
Kentucky	1	0	1	3	1	6	5
Maryland	23	25	18	28	38	30	30
Michigan	8	6	5	4	5	3	2
North Carolina	2	4	1	4	5	3	6
New York	1	5	8	5	12	11	10
Ohio	27	30	30	36	50	47	49
Pennsylvania	19	9	5	4	2	6	5
Texas	6	4	2	2	3	2	0
Virginia	16	32	42	46	57	76	65
West Virginia	1275	1269	1547	1624	1601	1607	1582
All Other States	20	13	20	12	14	16	20
Foreign Countries	5	3	2	2	5	5	3
Total	1441	1443	1721	1828	1857	1898	1850

Enrollment by Ethnicity

Term	White Non-Hispanic	Black Non-Hispanic	Hispanic	Asian or Pacific Islander	American Indian or Alaskan Native	Non-Resident Aliens	Two or more/Unknown	Total	% Minority
Fall 2007	1235	181	16	5	4	0	0	1441	14%
Fall 2008	1160	254	18	6	5	0	0	1443	20%
Fall 2009	1424	249	21	4	7	0	16	1721	16%
Fall 2010	1508	274	26	6	10	0	4	1828	17%
Fall 2011	1452	302	33	6	15	0	49	1857	19%
Fall 2012	1480	323	32	4	13	11	35	1898	20%
Fall 2013	1520	247	23	9	7	7	37	1850	16%

Percentage of Enrollment by Ethnicity

Term	White Non-Hispanic	Black Non-Hispanic	Hispanic	Asian or Pacific Islander	American Indian or Alaskan Native	Non-Resident Aliens	Two or more/Unknown	% Minority
Fall 2007	86%	13%	1%	.3%	.2%	0%	0%	14%
Fall 2008	80%	18%	1%	.4%	.3%	0%	0%	20%
Fall 2009	83%	14%	1%	.2%	.4%	0%	.9%	16%
Fall 2010	82%	15%	1%	.3%	.5%	0%	.2%	17%
Fall 2011	78%	16%	2%	.3%	.8%	0%	3%	19%
Fall 2012	78%	17%	2%	.2%	.7%	.6%	2%	20%
Fall 2013	82%	13%	1%	.5%	.4%	.4%	2%	16%

Average Age of All Students

Term	Age
Fall 2007	23
Fall 2008	23
Fall 2009 ¹	25
Fall 2010	25
Fall 2011	26
Fall 2012	26
Fall 2013	27

Students Age 25 and Older – All

Term	Undergraduate Enrollment	Undergraduates 25 Years or Older	Percent
Fall 2007	1441	299	21%
Fall 2008	1443	342	24%
Fall 2009 ¹	1721	523	30%
Fall 2010	1828	589	32%
Fall 2011	1857	633	34%
Fall 2012	1898	669	35%
Fall 2013	1850	637	34%

¹ Significant change is due to enrollment growth of FCI Gilmer and DMAPS students

Students Age 25 and Older - All Freshmen

Term	Total Freshmen	Freshmen 25 Years or Older	% of Total Freshmen
Fall 2007	446	77	17%
Fall 2008	490	90	18%
Fall 2009 ¹	569	96	17%
Fall 2010	708	239	34%
Fall 2011	682	236	35%
Fall 2012	680	221	33%
Fall 2013	573	155	27%

Students Age 25 and Older - Part-Time

Term	Part-Time Enrollment	Part-Time Students 25 Years or Older	Percent of Part-Time Students 25 Years or Older
Fall 2007	363	162	45%
Fall 2008	320	190	59%
Fall 2009 ¹	565	327	58%
Fall 2010	551	325	59%
Fall 2011	669	417	62%
Fall 2012	666	419	63%
Fall 2013	736	433	59%

¹ Large change is due to the number of FCI Gilmer and DMAPS students enrolled.

ACT Scores and SAT Scores - Fall First-Time/Full-Time

			State College
Term	ACT Average	SAT Average	System ACT Average
Fall 2007	19.3	834	20.6
Associate	18.6	0 ¹	
Baccalaureate	19.4	834	
Fall 2008	19.0	823	20.7
Associate	16.9	740	
Baccalaureate	19.2	828	
Fall 2009	19.1	852	20.7
Associate	18.0	800	
Baccalaureate	19.2	853	
Fall 2010	19.4	836	20.7
Associate	16.3	719	
Baccalaureate	21.6	949	
Fall 2011	19.0	800	20.6
Associate	16.7	745	
Baccalaureate	20.4	858	
Fall 2012	18.9	830	20.6
Associate	17	757	
Baccalaureate	20.5	914	
Fall 2013	18.6	847	20.6
Associate	16.7	733	
Baccalaureate	19.7	927	

¹ None Submitted

ACT Scores and SAT Scores – Spring Admits First-Time/Full-Time

Term	ACT Average	SAT Average
Spring 2008	19	0 ¹
Associate	16	0 ¹
Baccalaureate	19.4	657
Spring 2009	17.6	815
Associate	14.3	0 ¹
Baccalaureate	19.2	815
Spring 2010	18.7	700
Associate	15.1	0 ¹
Baccalaureate	20.7	700
Spring 2011	18.3	1070
Associate	18	840
Baccalaureate	18.8	1300
Spring 2012	17	750
Associate	16.4	750
Baccalaureate	18.8	0 ¹
Spring 2013	18.8	841
Associate	16.0	770
Baccalaureate	20.5	870

¹ None Submitted

Grade Point Averages Semester¹

	2007-08		2008-09		2009-10		2010-11		2011-12		2012-13	
	Fall	Spring	Fall	Spring	Fall	Spring	Fall	Spring	Fall	Spring	Fall	Spring
All Students	2.28	2.47	2.29	2.47	2.39	2.42	2.29	2.33	2.45	2.70	2.42	2.23
All Freshmen	2.13	2.20	2.03	2.09	2.21	2.20	2.27	2.04	2.28	2.16	2.11	1.89
First-Time Full-Time Freshmen	2.55	2.09	2.20	2.42	2.47	1.96	2.49	2.41	2.41	2.72	2.24	2.94

Grade Point Averages Cumulative²

	2007-08		2008-09		2009-10		2010-11		2011-12		2012-13	
	Fall	Spring	Fall	Spring	Fall	Spring	Fall	Spring	Fall	Spring	Fall	Spring
All Students	2.49	2.75	2.47	2.66	2.56	2.62	2.55	2.61	2.69	2.86	2.38	2.46
All Freshmen	2.40	2.54	2.15	2.32	2.42	2.47	2.53	2.44	2.58	2.46	2.27	2.25
First-Time Full-Time Freshmen	2.54	2.08	2.20	2.41	2.51	2.00	2.49	2.47	2.44	2.76	2.43	2.87

¹ Semester GPA shows work completed for the semester.

² Cumulative GPA includes the total of all dual credit, transfer, and GSC work.

Enrollment in One or More Developmental Courses – Fall
First-Time/Full-Time

Term	Freshmen	Developmental Courses	Percent in Developmental Courses
Fall 2007	291	190	65%
Fall 2008	303	191	63%
Fall 2009	329	214	65%
Fall 2010	313	189	60%
Fall 2011	284	179	63%
Fall 2012	339	208	61%
Fall 2013	280	190	68%

Enrollment in One or More Developmental Courses – Spring Admits
First-Time/Full-Time

Term	Freshmen	Developmental Courses	Percent in Developmental Courses
Spring 2007	20	9	45%
Spring 2008	24	16	67%
Spring 2009	30	24	80%
Spring 2010	33	26	78%
Spring 2011	41	37	90%
Spring 2012	22	16	73%
Spring 2013	27	20	74%

West Virginia County Enrollment – Top 25

Fall

County	2007	2008	2009	2010	2011	2012	2013
Gilmer	229	231	237	284	219	196	168
Braxton	162	147	165	195	167	180	140
Nicholas	50	56	83	90	66	91	112
Ritchie	58	48	44	43	80	71	107
Gilmer (FCI)	102	162	191	181	188	175	103
Calhoun	102	85	105	99	86	61	83
Lewis	60	62	72	73	70	72	80
Kanawha	40	39	44	52	51	52	68
Randolph	35	31	44	48	47	50	58
Clay	33	32	33	38	35	72	52
Harrison	27	29	33	32	44	37	52
Roane	43	56	56	54	56	52	51
Fayette	14	17	26	25	28	27	39
Wood	30	27	38	44	46	37	39
Raleigh	42	13	39	39	30	50	32
Berkeley	10	13	30	21	27	21	31
Webster	23	24	27	28	23	24	28
Upshur	23	28	23	29	34	33	25
Jackson	23	17	15	21	20	23	21
Pocahontas	7	7	16	8	10	18	20
Cabell	7	6	16	12	11	13	17
Putnam	12	9	8	8	10	13	15
Barbour	9	9	9	9	9	12	15
Wirt	17	13	19	22	17	12	14
Mason	4	2	10	5	17	16	14
Pendleton	10	10	6	6	10	18	14

West Virginia County Enrollment - All

County	2007	2008	2009	2010	2011	2012	2013
Barbour	9	9	9	9	9	12	15
Berkeley	10	13	30	21	27	21	31
Boone	2	3	4	3	9	7	9
Braxton	162	147	165	195	167	180	140
Brooke	1	1	2	1	1	4	2
Cabell	7	6	16	12	11	13	17
Calhoun	102	85	105	99	86	61	83
Clay	33	32	33	38	35	72	52
Doddridge	11	12	10	16	14	11	10
Fayette	14	17	26	25	28	27	39
Gilmer	229	231	237	284	219	196	168
Gilmer (FCI)	102	162	191	181	188	175	103
Grant	5	4	5	3	3	2	3
Greenbrier	10	7	14	13	14	10	14
Hampshire	2	2	11	6	6	8	1
Hancock	6	5	3	3	4	3	2
Hardy	5	6	3	2	1	5	2
Harrison	27	29	33	32	44	37	52
Jackson	23	17	15	21	20	23	21
Jefferson	1	2	3	7	7	7	6
Kanawha	40	39	44	52	51	52	68
Lewis	60	62	72	73	70	72	80
Lincoln	2	1	4	4	10	7	3
Logan	3	3	3	7	5	7	8
Marion	3	4	4	7	11	10	12
Marshall	2	1	8	6	10	11	7
Mason	4	2	10	5	17	16	14
McDowell	1	0	4	2	10	6	9

West Virginia County Enrollment (continued)

County	2007	2008	2009	2010	2011	2012	2013
Mercer	5	1	6	7	8	9	7
Mineral	7	9	5	3	1	2	5
Mingo	3	3	2	3	2	4	2
Monongalia	3	3	4	6	5	4	5
Monroe	2	1	3	3	5	3	3
Morgan	0	0	2	2	3	5	4
Nicholas	50	56	83	90	66	91	112
Ohio	1	1	6	2	4	3	4
Pendleton	10	10	6	6	10	18	14
Pleasants	9	6	14	13	7	4	8
Pocahontas	7	7	16	8	10	18	20
Preston	1	2	4	8	4	3	4
Putnam	12	9	8	8	10	13	15
Raleigh	42	13	39	39	30	50	32
Randolph	35	31	44	48	47	50	58
Ritchie	58	48	44	43	80	71	107
Roane	43	56	56	54	56	52	51
Summers	5	4	3	2	7	9	4
Taylor	1	2	5	4	8	10	12
Tucker	4	4	14	4	7	8	7
Tyler	4	4	8	2	5	4	6
Upshur	23	28	23	29	34	33	25
Wayne	1	0	0	4	5	4	5
Webster	23	24	27	28	23	24	28
Wetzel	4	1	9	5	8	5	8
Wirt	17	13	19	22	17	12	14
Wood	30	27	38	44	46	37	39
Wyoming	0	4	7	10	8	5	6

Residence Hall Occupancy Rates							
Fall 2013							
Hall Name	Room Type	# of rooms	Max # students	# occupants	Occupancy Rates	Male	Female
Goodwin	Single	192	192	175	91%	100	75
	Double	145	290	237	82%	168	69
	Total	337	482	412	85%	268	144
Pioneer Village	Single	156	156	116	74%	70	46
Sub Total	Single	348	348	291	84%	170	121
Sub Total	Double	145	290	237	82%	168	69
	Total	493	638	528	83%	338	190
Pickens	APT	6	12	2	17%	1	1
	Single	0	0	0	0	0	0
	Double	12	24	9	38%	7	2
Grand Totals		511	674	539	80%	346	193

Student/Faculty Ratios¹

Term	FTE Students	FTE Faculty	FTE Student/Faculty Ratio
Fall 2006	1218	59	21:1
Fall 2007	1207	67	18:1
Fall 2008	1262	70	18:1
Fall 2009	1356	74	18:1
Fall 2010	1468	79	19:1
Fall 2011	1412	80	18:1
Fall 2012	1445	93 ²	16:1
Fall 2013	1330	83 ³	16:1

¹ Ratios computed by Student FTE (student total credit hours produced / 15) ; Faculty FTE (full-time faculty + 1/3 of part-time faculty)

² Reflects an increase in the number of courses being delivered to Adult Learners and High School students (dual credit).

³ Higher number of Full-Time Faculty taking on Overloads and fewer Part-Time (Adjunct) faculty.

Full-Time Instructional Faculty by Academic Rank

Term	Professor		Associate Professor		Assistant Professor		Instructor		Lecturer, Graduate Assistant & Other		Total
	#	%	#	%	#	%	#	%	#	%	
Fall 2007	9	16%	16	28%	20	35%	10	18%	2	4%	57
Fall 2008	8	13%	16	27%	20	33%	14	24%	2	3%	60
Fall 2009	9	15%	16	27%	22	37%	13	21%	0	0%	60
Fall 2010	10	15%	15	22%	24	36%	18	27%	0	0%	67
Fall 2011	10	15%	18	26%	28	41%	12	18%	0	0%	68
Fall 2012	11	17%	17	25%	29	44%	9	14%	0	0%	66
Fall 2013	11	16%	16	23%	34	49%	8	12%	0	0%	69

Full-Time Instructional Faculty by Tenure Status

Term	Professor			Associate Professor			Assistant Professor			Instructor			Lecturer, Graduate Assistant & Other			Total		
	#	Tenured	%	#	Tenured	%	#	Tenured	%	#	Tenured	%	#	Tenured	%	#	Tenured	%
Fall 2007	9	9	100%	16	10	63%	20	2	10%	10	0	0%	2	0	0%	57	21	37%
Fall 2008	8	8	100%	16	10	63%	20	2	10%	14	0	0%	2	0	0%	60	20	33%
Fall 2009	9	9	100%	16	11	69%	22	1	5%	13	0	0%	0	0	0%	60	21	35%
Fall 2010	10	10	100%	15	14	93%	24	1	4%	18	0	0%	0	0	0%	67	25	37%
Fall 2011	10	10	100%	18	17	94%	28	2	7%	12	0	0%	0	0	0%	68	29	43%
Fall 2012	11	11	100%	17	16	94%	29	3	10%	9	0	0%	0	0	0%	66	30	45%
Fall 2013	11	11	100%	16	15	94%	34	5	15%	8	0	0%	0	0	0%	69	31	45%

Source: Faculty and Staff Characteristics – WVHEPC. Data for 2013-14 reflects submission information

Full-Time Instructional Faculty by Highest Degree Held

Term	Doctoral		Masters		First Professional		Bachelors		Total
	#	%	#	%	#	%	#	%	
Fall 2007	32	56%	24	42%	0	0%	1	2%	57
Fall 2008	31	52%	28	47%	0	0%	1	2%	60
Fall 2009	32	53%	27	45%	0	0%	1	2%	60
Fall 2010	32	48%	32	48%	1	1%	2	3%	67
Fall 2011	37	54%	29	43%	1	1%	1	1%	68
Fall 2012	35	53%	30	45%	1	2%	0	0%	66
Fall 2013	36	52%	31	45%	2	3%	0	0	69

Source: Faculty and Staff Characteristics – WVHEPC. Data for 2013-14 reflects submission information.

Part-Time Instructional Faculty by Highest Degree Held

Term	Doctoral		Masters		First Professional		Bachelors		Other		Total
	#	%	#	%	#	%	#	%	#	%	
Fall 2007	4	15%	18	67%	1	4%	3	11%	0	0%	26
Fall 2008	4	17%	14	58%	2	8%	4	17%	0	0%	24
Fall 2009	4	10%	25	61%	0	0%	9	22%	3	7%	41
Fall 2010	1	3%	25	69%	4	11%	4	11%	2	6%	36
Fall 2011	1	3%	24	67%	5	13%	6	17%	0	0%	36
Fall 2012 ¹	7	9%	62	76%	3	4%	9	11%	0	0%	81 ¹
Fall 2013	6	14%	28	67%	2	5%	5	12%	1	2%	42

¹ Reflects an increase in the number of courses being delivered to Adult Learners and High School students (dual credit).

Source: Faculty and Staff Characteristics – WVHEPC. Data for 2013-14 reflects submission information.

Full-Time Instructional Faculty by Gender

Term	Male		Female		Total Number
	Number	Percentage	Number	Percentage	
Fall 2007	36	63%	21	37%	57
Fall 2008	36	60%	24	40%	60
Fall 2009	37	62%	23	38%	60
Fall 2010	45	67%	22	33%	67
Fall 2011	46	68%	22	32%	68
Fall 2012	41	62%	25	38%	66
Fall 2013	42	61%	27	39%	69

Source: *Faculty and Staff Characteristics – WVHEPC. Data for 2013-14 reflects submission information.*

Full-Time Instructional Faculty by Ethnicity

	White, Non-Hispanic		Black, Non-Hispanic		Hispanic		Asian or Pacific Islander		American Indian or Alaskan Native			
Term	#	%	#	%	#	%	#	%	#	%	Total	% Minority
Fall 2007	55	96.5%	0	0.0%	0	0.0%	2	3.5%	0	0.0%	57	3.5%
Fall 2008	57	95.0%	0	0.0%	1	1.7%	2	3.3%	0	0.0%	60	5.0%
Fall 2009	58	97.0%	0	0.0%	1	1.7%	1	1.7%	0	0.0%	60	3.3%
Fall 2010	63	94.3%	1	1.49%	1	1.49%	2	2.99%	0	0.0%	67	6.0%
Fall 2011	65	95.6%	1	1.47%	1	1.47%	1	1.47%	0	0.0%	68	4.0%
Fall 2012	63	95.5%	1	1.51%	1	1.51%	1	1.51%	0	0.0%	66	4.5%
Fall 2013	65	94.2%	0	0	1	1.45%	3	4.35%	0	0.0%	69	5.8%

Source: Faculty and Staff Characteristics – WVHEPC. Data for 2013-14 reflects submission information.

Full-Time Instructional Faculty - Average Nine-Month Base Salary¹

	Professor		Associate Professor		Assistant Professor		Instructor		Lecturer, Graduate Assistant & Other			
Term	#	Salary	#	Salary	#	Salary	#	Salary	#	Salary	Total	Average Salary
Fall 2007	9	\$64,054	16	\$55,606	20	\$44,495	10	\$36,754	2	\$31,907	57	\$48,903
Fall 2008	8	\$65,885	16	\$58,216	20	\$46,100	14	\$35,203	2	\$33,243	60	\$48,997
Fall 2009	9	\$64,608	16	\$56,851	22	\$43,158	13	\$35,587	0	\$0	60	\$48,367
Fall 2010	10	\$65,093	15	\$58,224	24	\$45,566	18	\$37,858	0	\$0	67	\$49,244
Fall 2011	10	\$69,249	18	\$60,610	28	\$48,367	12	\$42,015	0	\$0	68	\$53,558
Fall 2012	11	\$69,758	17	\$60,384	29	\$48,981	9	\$40,728	0	\$0	66	\$54,005
Fall 2013	11	\$68,381	16	\$61,692	34	\$48,789	8	\$39,846	0	0	69	\$53,867

¹Data does not include pay for extra or extended assignments.

Source: Faculty and Staff Characteristics – WVHEPC. Data for 2013-14 reflects submission information.

Semester Tuition and Fees 2006-2013

	2006-07	2007-08	2008-09	2009-10	2010-11	2011-12	2012-13	2013-14
Resident	\$1,941	\$2,087	\$2,243	\$2,444	\$2,444	\$2,676	\$2,930	\$3,192
Non-Resident	\$4,647	\$4,995	\$5,369	\$5,851	\$6,000	\$6,360	\$6,912	\$7,200
Metro Rate	NA	NA	\$3,700	\$4,032	\$4,116	\$4,416	\$4,812	\$5,196

Annual Tuition Comparisons Fall 2013

Institution Name	In-State Tuition	Out-of-State Tuition	Metro Rate	Room & Board
Bluefield State College	\$5,564	\$10,536	\$8,040	NA
Concord University	\$6,002	\$13,332	\$9,332	\$7,516
Fairmont State University	\$5,824	\$12,288	NA	\$7,686
Glenville State College	\$6,384	\$14,400	\$10,392	\$8,810
Shepherd University	\$6,256	\$15,840	NA	\$8,740
West Liberty University	\$6,226	\$13,540	\$11,426	\$8,370
West Virginia State University	\$5,932	\$12,864	\$10,822	\$7,168
Average	\$6,027	\$13,257	\$10,002	\$8,048

Source: College Web sites

Revenues Summarized¹

	2009-10	2010-11	2011-12	2012-13
Operating Revenues:				
Tuition and fees	\$6,808,393	\$7,190,265	\$8,163,110	\$7,899,218
Government Contracts and Grants	\$4,352,680	\$3,825,089	\$3,828,959	\$3,347,424
Private gifts, grants, and contracts	\$944,304	\$943,979	\$1,256,253	\$2,965,364
Sales and services of educational activities	\$1,196,469	\$1,359,444	\$1,161,411	\$710,560
Sales and services of auxiliary enterprises	\$4,572,163	\$4,965,502	\$5,369,938	\$6,482,958
Other sources	\$567,703	\$961,581	\$1,035,093	\$936,426
Total Operating Revenues	\$18,441,712	\$19,245,860	\$20,814,764	\$22,341,950
Non-Operating Revenues:				
Government Appropriations	\$6,051,935	\$6,174,510	\$7,097,804	\$7,206,804
Federal PELL Grants	\$3,281,699	\$3,697,039	\$3,538,833	\$3,351,405
Income from investments	\$28,994	\$18,002	\$7,279	\$7,049
Total Non-Operating Revenues	\$9,362,628	\$9,889,551	\$10,643,916	\$10,565,258
Other				
Capital Proceeds from Commission	\$406,191	\$1,012,300	\$595,893	\$6,315,957
Capital Gifts (Private)			\$603,234	\$6,186,663
Capital Appropriations from State				\$4,000,000
Total revenues	\$28,210,531	\$30,147,711	\$32,657,807	\$49,409,828

¹See GSC Audited Financial Statements for Full Revenue Reports

Educational and General (E&G) Expenditures Summarized¹

	2009-10	2010-11	2011-12	2012-13
Operating Expenses:				
Instruction	\$6,693,360	\$6,536,173	\$6,942,428	\$6,938,531
Academic Support	\$988,246	\$1,114,276	\$1,199,797	\$1,015,399
Student Services	\$1,831,239	\$2,187,213	\$2,199,934	\$2,134,643
General Institutional Support	\$4,421,298	\$5,087,916	\$4,390,695	\$3,716,804
Operation and Maintenance of Plant	\$2,575,919	\$2,635,041	\$3,234,550	\$2,373,187
Scholarships and Aid	\$7,083,054	\$7,718,038	\$8,181,621	\$8,766,163
Auxiliary Enterprises	\$4,340,450	\$4,258,997	\$5,006,064	\$4,704,302
Depreciation	\$1,465,842	\$1,959,465	\$2,082,465	\$1,982,428
Fees Assessed by Policy Commission	\$65,850	\$68,357	\$73,500	\$76,705
Total Operating Expenses	\$29,465,258	\$31,565,476	\$33,311,054	\$31,708,162
Non-Operating Expenses:				
Interest on Indebtedness	\$626,332	\$1,233,412	\$1,709,576	\$1,697,499
Other	\$17,602	\$14,083	\$41,874	\$18,233
Total Non-Operating Expenses	\$643,934	\$1,247,495	\$1,751,450	\$1,715,732
Total Expenditures	\$30,109,192	\$32,812,971	\$35,062,504	\$33,423,894

¹See GSC Audited Financial Statements for Full Expenditure Reports

Financial Aid Summary First-Time Full-Time Freshmen

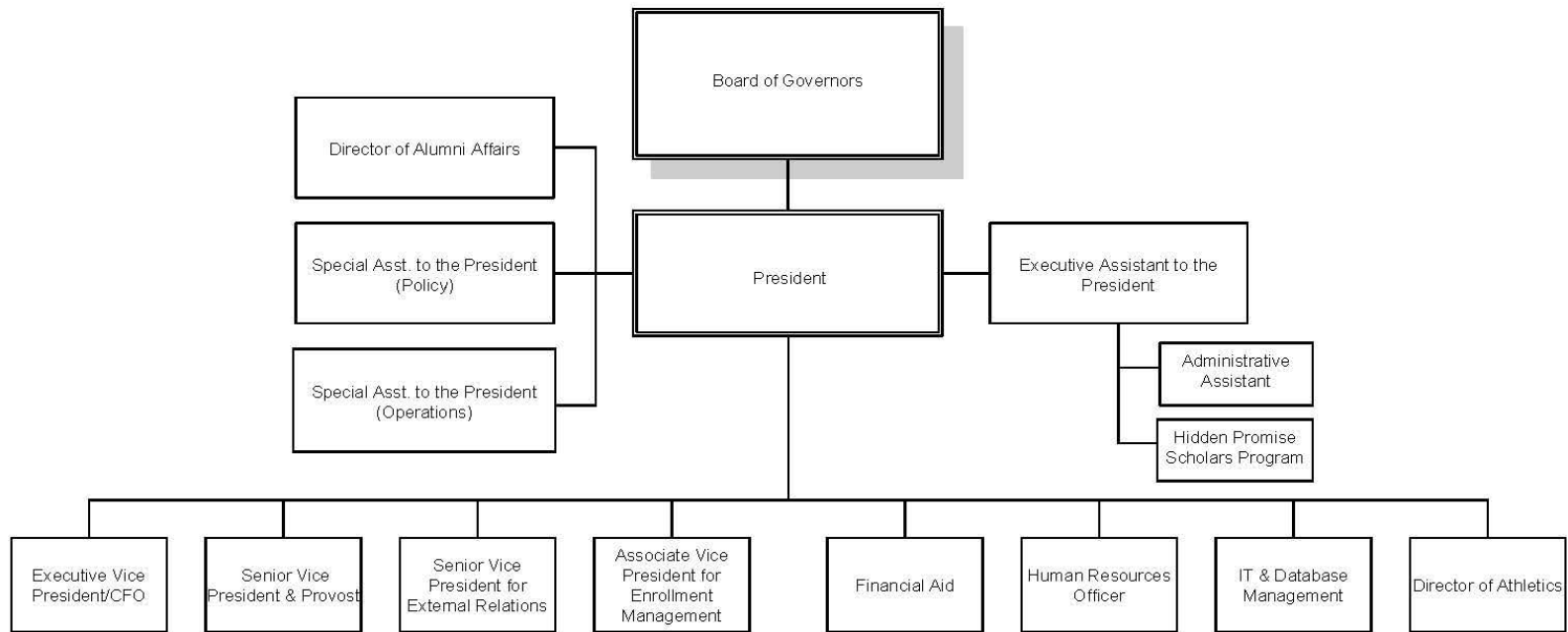
	2010-2011	2011-2012	2012-13
Applied for Financial Aid	296	284	339
Determined to have Financial need	263	244	293
Awarded Financial Aid	261	241	290
Average Financial Package	\$11,227	\$12,235	\$12,781

Financial Aid Processed

	2008-2009	2009-2010	2010-2011	2011-2012	2012-2013
All types of Aid	\$7,028,082	\$8,221,018	\$9,759,269	\$9,172,338	\$9,925,466
Loans Processed	\$5,995,410	\$6,706,221	\$7,279,348	\$7,496,207	\$7,314,086
Total	\$13,023,492	\$14,927,239	\$17,038,617	\$16,668,545	\$17,239,552



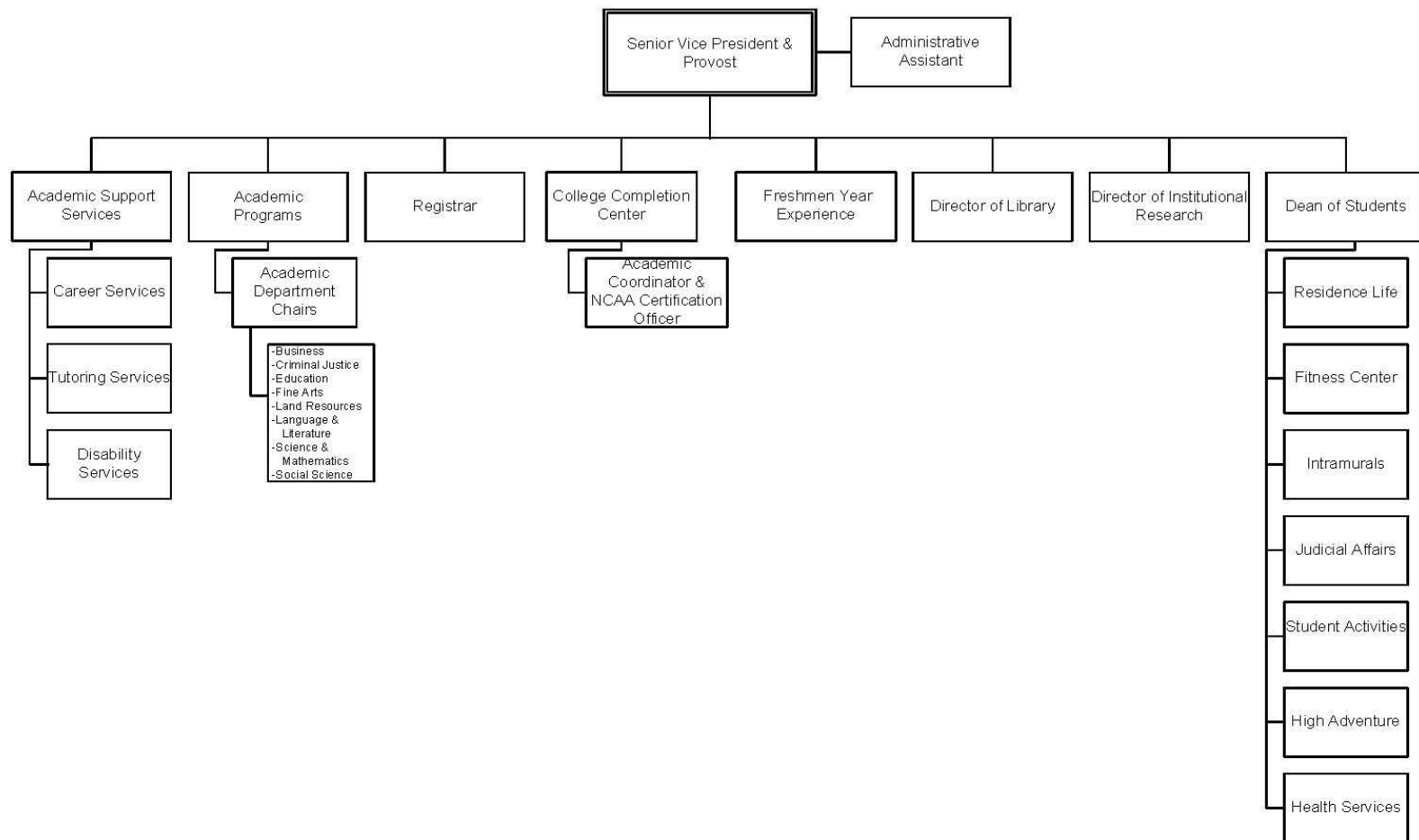
GLENVILLE STATE COLLEGE
ORGANIZATIONAL CHART
2013-2014



Updated 11/11/13



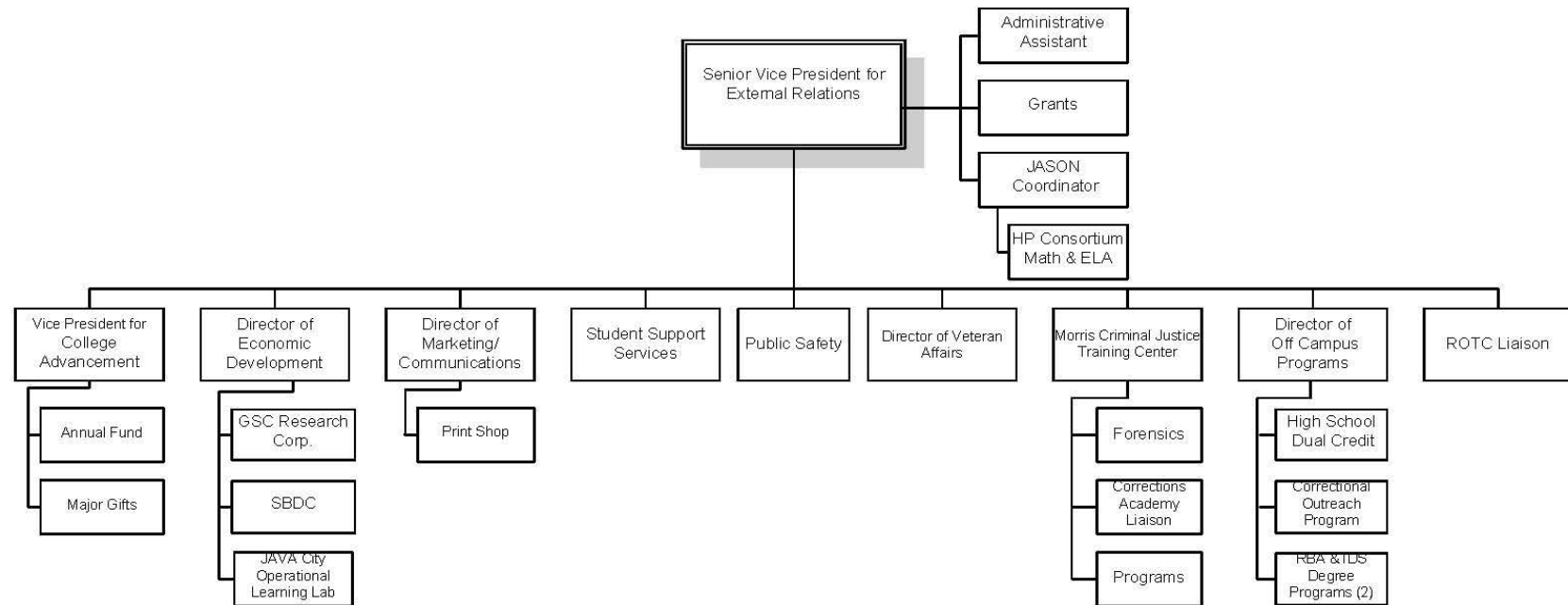
GLENVILLE STATE COLLEGE
ORGANIZATIONAL CHART
Senior Vice President & Provost
2013-2014



Updated 11/21/13



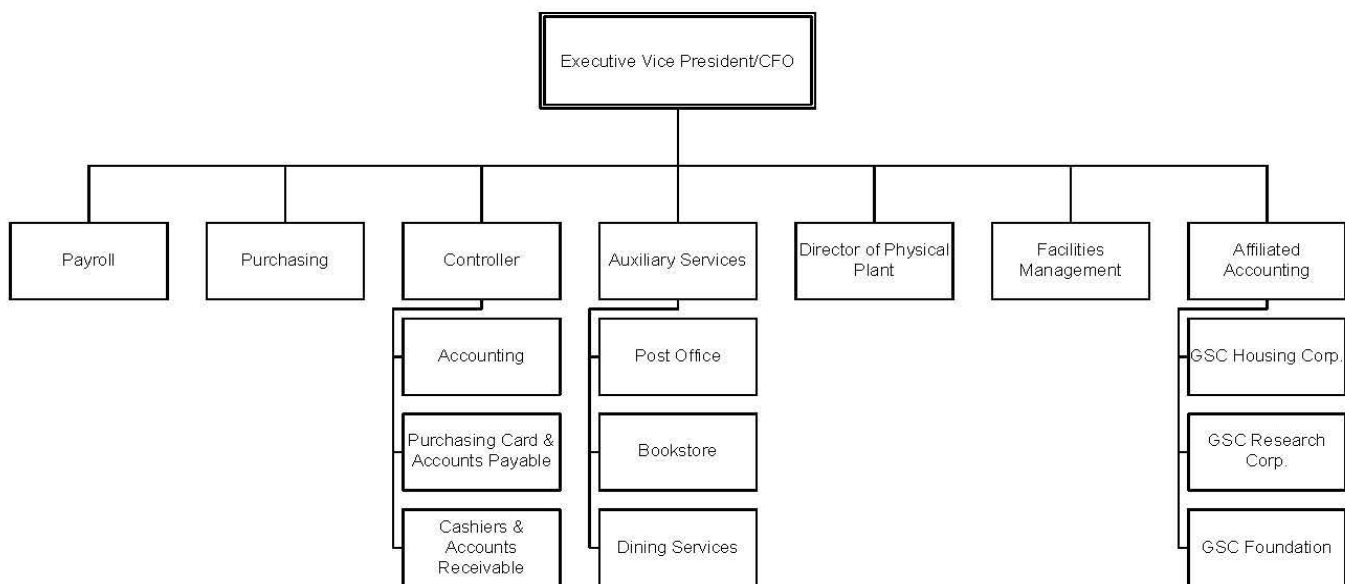
GLENVILLE STATE COLLEGE
ORGANIZATIONAL CHART
Senior Vice President for
External Relations
2013-2014



Updated 11/21/13



GLENVILLE STATE COLLEGE
ORGANIZATIONAL CHART
Executive Vice President of Finance/CFO
2013-2014



Updated 11/11/13

Committee Membership – 2013-2014

Academic Appeals	Academic Policy	Assessment Committee	Athletic Committee
Ann Reed, Chair & Adm. Liaison	Kevin Evans, Chair	Alan Daniel, Chair	Janet Bailey, Chair /Adm. Liaison
Alan Daniel	Kelly Treece, Vice-Chair	Neal Benson	Heather Allman
Art DeMatteo	Glenn Abraham	Ross Conover	Mary Alltop
Rico Gazal	Chuck Batson	Chris Cosner	Mandy Frymier
Mahesh Khadka	David Lewis	Shara Curry	Bob Hardman
Jonathan Minton	John Taylor	Brian Perkins	Dwight Heaster
Alison Witte	Jared Wilson	Louis Roy	Marcal Lazenby
Gary Morris (Alternate)	Nancy Zane	Marjorie Stewart	Nathan Lilly
Joseph Wood (Alternate)	John Peek, Adm. Liaison	Rebecca Swisher	Ella Messinger
	Ashley Bush	John Peek, Adm. Liaison	Ann Reed
	Samantha Fulks		Jim Tatman
			Ed Wood
			Clinton Carr
			Cat Nottingham

College Leadership Council	Commencement/Convocation	Curriculum Committee	Enrollment Management
John Peek, Chair & Adm. Liaison	John Peek, Chair	Mike Smith, Chair	John Peek, Chair/Adm. Liaison
David O'Dell, Vice Chair	Duane Chapman	Mark Mills, Vice-Chair	Janet Bailey
Janet Bailey	Wayne de Rosset	Chuck Batson	Neal Benson
Lloyd Bone	Denise Ellyson	Lloyd Bone	Duane Chapman
Wayne deRosset	Lois Miller	Kevin Cain	Adrian Duelle
Denise Ellyson	Deb Nagy	Tara Cosco	Cinda Echard
Kevin Evans	Tom Ratliff	Wayne de Rosset	Joe Evans
Bob Hardman	Teresa Sterns	Denise Ellyson	Karen Lay
Ann Reed	David Millard, Adm. Liaison	Gary Morris	Mark Mills
Jim Tatman		Sara Sawyer	Jessie Patterson
John Taylor		Mike Smith	Jason Phares
Ed Wood		Milan Vavrek	Sarah Ratliff
Travis Nesbitt		Ed Wood	Trae Sprague
		Melody Wise	Ashley Weir
		John Peek, Adm. Liaison	Marc Jones
		Nate Bolin	
		Travis Nesbitt	

Committee Membership – 2013-2014

Facilities Committee	Faculty Development	Faculty Senate	Financial Aid Appeals
Tom Ratliff, Chair/Adm. Liaison	Sara Sawyer, Chair	David O' Dell, President	Karen Lay, Chair & Adm. Liaison
Betsy Barr	Jason Barr	Larry Baker	Robin Cottrill
Jerry Burkhammer	Noel Cawley	Liza Brenner	Ashley Haddox
Bill Deel	Arthur DeMatteo	Art DeMatteo	Sherry Jones
Bob Hardman	Cinda Echard	Cinda Echard	Ann Reed
Debi Jenkins	Carmine Grieco	Kevin Evans	John Taylor
Debra Nagy	Louis Roy	Rico Gazal	
David O'Dell	Marjorie Stewart	Megan Gibbons	
John Peek	Milan Vavrek	Ida Mills	
Jason Phares	John Peek, Adm. Liaison	David O'Dell	
Tom Ratliff		Paul Peck	
James Spears		Shelly Ratliff	
Milan Vavrek		Rebecca Swisher	
Travis Nesbitt		John Taylor	
		Kelly Treece	
		Milan Vavrek	
		Dennis Wemm	
		Joseph Wood	
		Jonathan Minton, alternate	
		John Peek, Adm. Liaison	

Homecoming	International Committee	Judicial Council	Library Advisory Committee
Deb Nagy, Chair	John Peek, Chair & Adm. Liaison	Heather Allman	Melissa Gish, Chair
Janet Bailey	Megan Gibbons	Amy Beckett	Amy Beckett
Annette Barnette	Mahesh Khadka	Ashley Bush	Shara Curry
Lloyd Bone	Jessie Patterson	Avan McHenry	Jane Friedmann
Jerry Burkhammer	Ed Wood	Jared Shipe	Cheryl McKinney
Duane Chapman	Jong-Hoon Yu	Matthew Sisk	John McKinney
Dustin Crutchfield	Jelena Elez	Hillary Tinney	Ida Mills
Wayne de Rosset	Dejana Ludoski	Duane Chapman, Adm. Liaison	Garrett Rinehart
Jodi Ocheltree	Garrett Rinehart		Gail Westbrook
Jason Phares			Alison Witte
T Ratliff /T Marks/T Wellings			Rick Witte
SGA Officers			Jacob Yocum
			John Peek, Adm. Liaison

Committee Membership – 2013-2014

Promotion & Tenure	Retention Committee	Scholarship	Staff Council
Art DeMatteo	Mary Alltop	Karen Lay, Chair	Jim Tatman, President
Rico Gazal	David Bailey	Duane Chapman	Mary Alltop
Jonathan Minton	Duane Chapman	Denny Pounds	Carla Conley
Fred Walborn	Angela Cline	Cheryl McKinney	Brittany Frymier
Dennis Wemm	Mandy Frymier	Gary Morris	Mindy Greathouse
Kevin Evans, alternate	Rico Gazal or Ross Conover	Ashley Weir	Debi Jenkins
	Melissa Gish	John Peek, Admin Liaison	Lois Miller
	Jason Phares		Jason Phares
	Bobby Davis		Ann Reed
	Joseph Neal		Sheri Skidmore
	John Peek, Admin Liaison		Eric Squires
			Gail Westbrook
			Krystal Smith, Adm. Liaison

Student Government Association	Student Life		
Travis Nesbitt, President	Duane Chapman, Chair & Adm. Liaison		
Marc Jones, Vice President	Heather Allman		
Nathan Bolin	Mary Alltop		
Clinton Carr	Amy Beckett		
Conner Ferguson	Adam Black		
Ryan Hubbard	Jerry Burkhammer		
Joseph Neal	Conner Ferguson		
Cat Nottingham	Avan McHenry		
Eric Plummer	Travis Nesbitt		
Garrett Rinehart	Ashley Bush		
Duane Chapman, Adm. Liaison	Shelly Ratliff		
Dwight Heaster, advisor	Jared Shipe		
	Frank Treadway		

Committee Membership – 2013-2014

Ad hoc/Task Force Committees			
Default Management	Diversity Committee	Early Intervention Team	Institutional Review Board
Karen Lay, Chair	John Peek, Chair & Adm. Liaison	John Peek, Chair	Ida Mills, Chair
Stacy Adkins	Liza Brenner	Jerry Burkhammer	Alan Daniel
David Bailey	Duane Chapman	Duane Chapman	Carmine Grieco
Neal Benson	Megan Gibbons	Ashley Edwards	Sara Sawyer
Duane Chapman	Jodi Ocheltree	Joe Evans	Tammy Stewart
Carla Conley	Shelby Montgomery	Marcal Lazenby	John Taylor
Joanna DiStefano		Bill Lilly	Alison Witte
Mawahna Gifford		Ann Reed	John Peek, Adm. Liaison
Ashley Hopkins / Onick Lewis		Matt Sisk	
Bill Lilly		Ashley Weir	
Ashley Weir			
John Peek, Admin Liaison			
Media	Pioneer Showcase	Retention Study Team	Strategic Planning Team
John Peek, Chair & Admin Liaison	Rico Gazal, Chair	Alan Daniel	John Peek, Chair & Admin Liaison
Dustin Crutchfield	Sallie Anglin	Joe Evans	Janet Bailey
Jonathan Minton	Amy Beckett	Bill Lilly	Jerry Burkhammer
Jodi Ocheltree	Liza Brenner	David Millard	Duane Chapman
Marjorie Stewart	Angela Cline	John Peek	Kevin Evans
Dennis Wemm	Alan Daniel	James Spears	Robert Hardman
Jennifer Wenner	Kevin Evans		David Millard
Travis Nesbitt	Jonathan Minton		Lois Miller
	Connie Stout		Jason Phares
	John Peek, Admin Liaison		Dennis Pounds
			Tom Ratliff
			James Spears
			Travis Nesbitt

Committee Membership – 2013-2014

Textbook Affordability
John Peek, Chair & Admin Liaison
Gary Arbogast
Liza Brenner
Duane Chapman
Melissa Gish
Diana Milam
Gail Westbrook
Joseph Neal
Allison Taylor