



GLENVILLE  
STATE COLLEGE

Fact Book

Fall 2014



## Table of Contents

Enrollment Trends	Page
<b>Fall</b>	
Fall Enrollment by Class	1
First-Time Freshmen	2
First-Time Freshmen – Baccalaureate Program	3
First-Time Freshmen – Associate Program	4
New Transfers	5
New Transfers – Baccalaureate Program Enrollment	6
New Transfers – Associate Program Enrollment	6
Total Headcount & FTE by Course Location	7
Total Headcount & FTE by Online Courses	7
Fall Enrollment Headcount Comparison	8
Fall Enrollment FTE Comparison	8
Applicants Accepted and Enrolled – All students	9
Applicants Accepted and Enrolled – First-Time Freshmen	10
Applicants Accepted and Enrolled – Transfer Students	11
Applicants Accepted and Enrolled – Re-Admit Students	12
<b>Spring</b>	
Spring Enrollment by Class	13
FTE by Spring Semesters	13
New First-Time Freshmen for Spring	14
New First-Time Freshmen for Spring – Baccalaureate Program	15
New First-Time Freshmen for Spring – Associate Program	15
New Transfers for Spring	16
New Transfers for Spring – Baccalaureate Program	17
New Transfers for Spring – Associate Program	17
<b>Summer</b>	
Summer Enrollment by Class	18
FTE by Summer Semesters	18

Retention  
Rates

**Fall to Fall**

Retention of First-Time, Full-Time Students , Fall – Fall	19
Retention of All Students – Degree & Non-Degree Seeking, Fall – Fall	19
Full-Time Students Retention Baccalaureate Program, Fall – Fall	20
Full-Time Students Retention Associate Program, Fall – Fall	20

**Fall to Spring**

Retention of First-Time, Full-Time Students , Fall – Spring	21
Retention of All Students – Degree & Non-Degree Seeking, Fall – Spring	21
Full-Time Students Retention Baccalaureate Program, Fall – Spring	22
Full-Time Students Retention Associate Program, Fall – Spring	22

**Spring to Fall**

Retention of First-Time, Full-Time Students – Spring Admits, Spring – Fall	23
Retention of All Students – Degree & Non-Degree Seeking, Spring – Fall	23
Full-Time Students Retention Baccalaureate Program, Spring – Fall	24
Full-Time Students Retention Associate Program, Spring – Fall	24

**Graduation**

Six Year Graduation Rates (First-Time, Full-Time)	25
Five Year Graduation Rates (First-Time, Full-Time)	25
Four Year Graduation Rates (First-Time, Full-Time)	25
Six Year Graduation Rates (received Athletic Related Financial Aid )	26

Program  
Profile

Full-Time Enrollment by Degree Program	27
Part-Time Enrollment by Degree Program	28
Enrollment by Academic Program	29
Graduation by Academic Program	33
Degrees Conferred	36

## Student Profile

Student Profile Summary	37
Enrollment by Gender	38
Enrollment by State of Residence	39
Enrollment by Ethnicity	40
Average Age of All Students	41
Students Age 25 and Older – All	41
Students Age 25 and Older – All Freshmen	42
Students Age 25 and Older – Full-Time	43
Students Age 25 and Older – Part-Time	43
ACT Scores and SAT Scores – Fall	44
ACT Scores and SAT Scores – Spring Admits	45
Grade Point Averages – Semester	46
Grade Point Averages – Cumulative	46
Enrollment in One or More Developmental Courses - Fall	47
Enrollment in One or More Developmental Courses –Spring Admits	47
West Virginia County Enrollment – Top 25 by number Enrolled	48
West Virginia County Enrollment – by County	49
Residence Hall Occupancy Rates – Spring 2014	51
Residence Hall Occupancy Rates – Fall 2014	52

## Faculty Profile

Student/Faculty Ratios	53
Full-Time Faculty by Academic Rank	54
Full-Time Faculty by Tenure Status	54
Full-Time Faculty by Highest Degree Held	55
Part-Time Faculty by Highest Degree Held	56
Full-Time Faculty by Gender	57
Full-Time Faculty by Ethnicity	58
Full Time Instructional Faculty – Average Nine-Month Salary	59

Financial	
Semester Tuition and Fees	60
Annual Tuition Comparisons	60
Revenue Summarized	61
Educational and General (E&G) Expenditures Summarized	62
Financial Aid Summary, First-Time Freshman	63
Financial Aid Processed	63
Organizational Charts	
Board of Governors, President, and Executive Staff	64
Academic and Student Affairs	65
External Relations	66
Business & Finance	67
Athletics	68
Committees	
Academic Appeals, Academic Policy, Assessment, Athletic, College Leadership, Commencement/Convocation, Curriculum, Diversity	69
Enrollment Management ,Facilities, Faculty Development, Faculty Senate, Financial Aid Appeals, Homecoming, International, Institutional Review Board	70
Judicial Council, Library Advisory , Promotion & Tenure, Retention, Scholarship, Staff Council, Student Government Association, Student Life	71
Default Management, Early Intervention Team, HLC Assurance Team, Media, Pioneer Showcase, Retention Study Team, Strategic Planning Team, Textbook Affordability	72

Fall reporting posted in October 2014 to  
 IPEDS Integrated Postsecondary Education Data System  
 HEPC West Virginia Higher Education Policy Commission

### Fall Enrollment by Class

Class	2008	2009	2010	2011	2012	2013	2014
Freshman	487	569	708	682	680	573	566
Sophomore	204	180	247	264	225	220	247
Junior	165	161	157	226	199	185	183
Senior	331	323	331	308	334	287	256
Non-Degree <sup>1</sup>	256	488	385	377	460	585	550
<b>Total Headcount</b>	<b>1443</b>	<b>1721</b>	<b>1828</b>	<b>1857</b>	<b>1898</b>	<b>1850</b>	<b>1802</b>

### Percentage of Fall Enrollment by Class

Class	2008	2009	2010	2011	2012	2013	2014
Freshman	34%	33%	39%	37%	36%	31%	31%
Sophomore	14%	10%	13%	14%	12%	12%	14%
Junior	11%	9%	9%	12%	10%	10%	10%
Senior	23%	19%	18%	17%	18%	16%	14%
Non-Degree <sup>1</sup>	18%	28%	21%	20%	24%	31%	31%
<b>Total Headcount</b>	<b>1443</b>	<b>1721</b>	<b>1828</b>	<b>1857</b>	<b>1898</b>	<b>1850</b>	<b>1802</b>

<sup>1</sup> Students not seeking a degree and high school early entrance students.

---

### First-Time Freshmen

Term	Enrolled Full-Time	Male	Female	Enrolled Part-Time	Male	Female	Total Enrolled
Fall 2008	302	175	127	1	0	1	303
Fall 2009	329	175	154	2	0	2	331
Fall 2010	313	172	141	103 <sup>1</sup>	93	10	416
Fall 2011	284	182	102	71	60	11	355
Fall 2012	339	224	115	61	55	6	400
Fall 2013	280	163	117	35	19	16	315
Fall 2014	264	148	116	80	66	14	344

---

<sup>1</sup> New off-site associate degree programs at Federal Corrections Institution (FCI) Gilmer and for West Virginia Department of Military Affairs and Public Safety (DMAPS).



### First-Time Freshmen - Baccalaureate Program

Term	Enrolled Full-Time	Male	Female	Enrolled Part-Time	Male	Female	Total Enrolled
Fall 2008	278	158	120	1	0	1	279
Fall 2009	291	155	136	0	0	0	291
Fall 2010 <sup>1</sup>	149	85	77	1	0	1	150
Fall 2011	155	91	64	2	2	0	157
Fall 2012	169	112	57	1	0	1	170
Fall 2013	175	96	79	1	1	0	176
Fall 2014	195	107	88	5	1	4	200

<sup>1</sup>Adjusted ACT and SAT requirements limiting number of students admitted to a baccalaureate program.

### First-Time Freshmen - Associate Program

Term	Enrolled Full-Time	Male	Female	Enrolled Part-Time	Male	Female	Total Enrolled
Fall 2008	24	17	7	0	0	0	24
Fall 2009	38	20	18	2	0	2	40
Fall 2010 <sup>1</sup>	164	87	64	102	93	9	266
Fall 2011	129	91	38	69	58	11	198
Fall 2012	170	112	58	60	55	5	230
Fall 2013	105	67	38	34	18	16	139
Fall 2014	69	41	28	75	65	10	144

<sup>1</sup> Adjusted ACT and SAT requirements limiting number of students admitted to a baccalaureate program.

### New Transfers for Fall

Term	Enrolled Full-Time	Male	Female	Enrolled Part-Time	Male	Female	Total Enrolled
Fall 2008	83	50	33	7	4	3	90
Fall 2009	78	50	28	5	2	3	83
Fall 2010	104	54	50	56 <sup>1</sup>	28	28	160
Fall 2011	101	60	41	51	29	22	152
Fall 2012	92	54	38	28	24	4	120
Fall 2013	58	36	22	97	55	42	155
Fall 2014	80	49	31	63	41	22	143

<sup>1</sup>West Virginia Department of Military Affairs and Public Safety (DMAPS) transfers into Associate Criminal Justice Program.

### New Transfers - Baccalaureate Program

Term	Enrolled Full-Time	Male	Female	Enrolled Part-Time	Male	Female	Total Enrolled
Fall 2008	77	44	33	7	4	3	84
Fall 2009	70	46	24	5	2	3	75
Fall 2010	70	38	32	4	2	2	74
Fall 2011	64	38	26	5	0	5	69
Fall 2012	64	37	27	3	1	2	67
Fall 2013	51	34	17	5	3	2	56
Fall 2014	66	42	24	7	5	2	73

### New Transfers - Associate Program

Term	Enrolled Full-Time	Male	Female	Enrolled Part-Time	Male	Female	Total Enrolled
Fall 2008	6	6	0	0	0	0	6
Fall 2009	8	4	4	0	0	0	8
Fall 2010 <sup>1</sup>	34	16	18	52	26	26	86
Fall 2011	37	22	15	46	29	17	83
Fall 2012	28	17	11	25	23	2	53
Fall 2013	7	2	5	92	52	40	99
Fall 2014	14	7	7	56	36	20	70

<sup>1</sup>West Virginia Department of Military Affairs and Public Safety (DMAPS) transfers into Associate Criminal Justice Program.

## Enrollment by Course Location

Location	Fall 2010		Fall 2011		Fall 2012		Fall 2013		Fall 2014	
	Headcount	FTE	Headcount	FTE	Headcount	FTE	Headcount	FTE	Headcount	FTE
Glenville Campus	1309	1161	1503	1186	1476	1176	1136	1051	1037	974
FCI Gilmer	203	85	196	69	183	64	107	58	139	69
New River <sup>1</sup>	15	5	11	5	13	6	10	4	12	3
Braxton Center	NA	NA	NA	NA	51	23	46	18	84	24
High Schools	185	75	152	42	200	86	236	75	251	71

## Enrollment by Online Courses

Location	Fall 2010		Fall 2011		Fall 2012		Fall 2013		Fall 2014	
	Headcount	FTE	Headcount	FTE	Headcount	FTE	Headcount	FTE	Headcount	FTE
Glenville Campus	336	88	449	105	415	109	440	120	280	78
DMAPS <sup>2</sup>	137	42	131	63	271	65	93	45	189	75
<b>Total</b>	473	130	580	168	686	174	533	165	469	153

<sup>1</sup> 2 + 2 Education Program.

<sup>2</sup> West Virginia Department of Military Affairs and Public Safety

### Fall Enrollment Headcount Comparison

Institution Name	Fall 2008	Fall 2009	Fall 2010	Fall 2011	Fall 2012	Fall 2013	Fall 2014
Bluefield State College	1943	2058	2101	1929	1935	1747	1563
Concord University	2810	2924	2919	2797	2834	2767	2545
Fairmont State University	4554	4572	4708	4617	4451	4232	4034
<b>Glenville State College</b>	<b>1443</b>	<b>1721</b>	<b>1828</b>	<b>1857</b>	<b>1898</b>	<b>1850</b>	<b>1802</b>
Shepherd University	4283	4370	4336	4393	4326	4221	4041
West Liberty State College	2508	2645	2738	2787	2804	2775	2693
West Virginia State University	3110	3971	3239	2827	2644	2677	2884

### Fall Enrollment FTE Comparison

Institution Name	Fall 2010	Fall 2011	Fall 2012	Fall 2013	Fall 2014
Bluefield State College	1757	1660	1717	1556	1352
Concord University	2740	2723	2621	2539	2305
Fairmont State University	4125	4023	3939	3745	3565
<b>Glenville State College</b>	<b>1468</b>	<b>1412</b>	<b>1445</b>	<b>1330</b>	<b>1279</b>
Shepherd University	3786	3837	3774	3642	3458
West Liberty State College	2644	2656	2672	2662	2513
West Virginia State University	2475	2259	2108	2158	2229

### Applicants Accepted and Enrolled All Students

Term	Applicants	Male	Female	Number Accepted	Enrolled Full-Time	Male	Female	Enrolled Part-Time	Male	Female	Total Enrolled
Fall 2008	1227	729	498	1070	409	239	170	18	7	11	427
Fall 2009	1165	584	581	1092	446	246	200	11	3	8	457
Fall 2010	1347	696	651	1094	457	247	210	174	130	44	631
Fall 2011	1588	877	711	1345	425	256	169	130	92	38	555
Fall 2012	1568	888	680	1354	472	297	175	116	94	22	588
Fall 2013	1443	725	718	1140	330	197	133	131	73	58	461
Fall 2014	1640	833	807	717 <sup>1</sup>	366	210	156	166	114	52	532

### Applicants Accepted and Enrolled Conversion Percentages

Term	Accepted to Applicants	Full-Time to Accepted	Part-Time to Accepted	Enrollment to Accepted
Fall 2008	87%	38%	2%	40%
Fall 2009	94%	41%	1%	42%
Fall 2010	81%	42%	16%	58%
Fall 2011	85%	31%	10%	41%
Fall 2012	86%	35%	8%	43%
Fall 2013	79%	29%	11%	40%
Fall 2014 <sup>1</sup>	44%	51%	23%	74%

<sup>1</sup> Applicants with incomplete applications not accepted.

### Applicants Accepted and Enrolled First-Time Freshmen

Term	Applicants	Male	Female	Number Accepted	Enrolled Full-Time	Male	Female	Enrolled Part-Time	Male	Female	Total Enrolled
Fall 2008	1021	615	406	864	302	175	127	1	0	1	303
Fall 2009	928	463	465	855	329	175	154	2	0	2	331
Fall 2010	1025	529	496	796	313	172	141	103	93	10	416
Fall 2011	1246	690	556	1023	284	182	102	71	60	11	355
Fall 2012	1218	696	522	1024	339	224	115	61	55	6	400
Fall 2013	1198	586	612	892	280	163	117	35	19	16	315
Fall 2014 <sup>1</sup>	1292	644	648	602 <sup>1</sup>	264	148	116	80	66	14	344

### Applicants Accepted and Enrolled Conversion Percentages First-Time Freshmen

Term	Accepted to Applicants	Full-Time to Accepted	Part-Time to Accepted	Enrollment to Accepted
Fall 2008	85%	35%	0%	35%
Fall 2009	92%	38%	0%	39%
Fall 2010	78%	39%	13%	52%
Fall 2011	82%	28%	7%	35%
Fall 2012	84%	33%	6%	39%
Fall 2013	74%	31%	4%	35%
Fall 2014 <sup>1</sup>	47%	44%	13%	57%

<sup>1</sup> Applicants with incomplete applications not accepted.



### Applicants Accepted and Enrolled New Transfer Students

Term	Applicants	Male	Female	Number Accepted	Enrolled Full-Time	Male	Female	Enrolled Part-Time	Male	Female	Total Enrolled
Fall 2008	156	90	66	156	83	50	33	7	4	3	90
Fall 2009	167	87	80	167	78	50	28	5	2	3	83
Fall 2010	229	123	106	205	104	54	50	56 <sup>1</sup>	28	28	160 <sup>1</sup>
Fall 2011	255	147	108	236	101	60	41	51	29	22	152
Fall 2012	247	140	107	227	92	54	38	28	24	4	120
Fall 2013	240	135	105	224	58	36	22	97	55	42	155
Fall 2014 <sup>2</sup>	264	151	113	147 <sup>2</sup>	80	49	31	63	41	22	143

### Applicants Accepted and Enrolled Conversion Percentages New Transfer Students

Term	Accepted to Applicants	Full-Time to Accepted	Part-Time to Accepted	Enrollment to Accepted
Fall 2008	100%	53%	4%	58%
Fall 2009	100%	47%	3%	50%
Fall 2010	89%	51%	27%	78%
Fall 2011	93%	43%	22%	67%
Fall 2012	92%	41%	12%	53%
Fall 2013	93%	26%	43%	69%
Fall 2014 <sup>2</sup>	56%	54%	43%	97%

<sup>1</sup> Significant Fall 2010 increases reflects enrollment in new degree offerings and enrollment growth at Federal Corrections Institution (FCI) Gilmer and West Virginia Department of Military Affairs and Public Safety (DMAPS).

<sup>2</sup> Applicants with incomplete applications not accepted.

### Applicants Accepted and Enrolled Re-Admit Students

Term	Applicants	Male	Female	Number Accepted	Enrolled Full-Time	Male	Female	Enrolled Part-Time	Male	Female	Total Enrolled
Fall 2008	50	24	26	50	24	11	10	10	3	7	34
Fall 2009	70	34	36	70	39	21	18	4	1	3	43
Fall 2010	93	44	49	93	40	21	19	15	9	6	55
Fall 2011	87	40	47	86	40	14	26	8	3	5	48
Fall 2012	103	52	51	103	41	19	22	27	15	12	68
Fall 2013	79	39	40	75	19	8	11	32	19	13	51
Fall 2014 <sup>1</sup>	74	33	41	48	22	13	9	23	7	16	45

<sup>1</sup> Applicants with incomplete applications not accepted.

---

### Spring Enrollment by Class

<b>Class</b>	<b>2008</b>	<b>2009</b>	<b>2010</b>	<b>2011</b>	<b>2012</b>	<b>2013</b>	<b>2014</b>
Freshman	402	471	578	611	544	518	468
Sophomore	207	221	219	264	273	253	257
Junior	181	173	178	213	222	200	189
Senior	353	334	344	338	364	344	314
Non-Degree	97	108	190	160	155	245	186
<b>Total Headcount</b>	<b>1240</b>	<b>1307</b>	<b>1509</b>	<b>1586</b>	<b>1558</b>	<b>1560</b>	<b>1414</b>

---

### FTE by Spring Semesters

<b>Term</b>	<b>2008</b>	<b>2009</b>	<b>2010</b>	<b>2011</b>	<b>2012</b>	<b>2013</b>	<b>2014</b>
<b>Spring</b>	1088	1163	1294	1340	1271	1245	1121

---

### New First-Time Freshmen for Spring

Term	Enrolled Full-Time	Male	Female	Enrolled Part-Time	Male	Female	Total Enrolled
Spring 2009	30	21	9	0	0	0	30
Spring 2010	33	18	15	3	1	2	36
Spring 2011	41	26	15	29	26	3	70
Spring 2012	22	11	11	49	39	10	71
Spring 2013	30	16	14	5	1	4	35
Spring 2014	24	19	5	41	39	2	65

### New First-Time Freshmen for Spring - Baccalaureate Program

Term	Enrolled Full-Time	Male	Female	Enrolled Part-Time	Male	Female	Total Enrolled
Spring 2009	22	17	5	0	0	0	22
Spring 2010	21	11	10	0	0	0	21
Spring 2011	13	7	6	12	10	2	25
Spring 2012	6	2	4	0	0	0	6
Spring 2013	14	7	7	1	0	1	15
Spring 2014	15	11	4	1	1	0	16

### New First-Time Freshmen for Spring – Associate Program

Term	Enrolled Full-Time	Male	Female	Enrolled Part-Time	Male	Female	Total Enrolled
Spring 2009	8	4	4	0	0	0	8
Spring 2010	12	7	5	2	0	2	14
Spring 2011	28	19	9	17	16	1	45
Spring 2012	16	9	7	49	39	10	65
Spring 2013	16	9	7	4	1	3	20
Spring 2014	9	8	1	40	38	2	49

---

### New Transfers for Spring

<b>Term</b>	<b>Enrolled Full-Time</b>	<b>Male</b>	<b>Female</b>	<b>Enrolled Part-Time</b>	<b>Male</b>	<b>Female</b>	<b>Total Enrolled</b>
Spring 2009	15	8	7	5	1	4	20
Spring 2010	32	24	8	1	1	0	33
Spring 2011	61	37	24	26	17	9	87
Spring 2012	39	24	15	30	26	4	69
Spring 2013	46	17	29	8	3	5	54
Spring 2014	35	16	19	21	15	6	56

### New Transfers for Spring - Baccalaureate Program

Term	Enrolled Full-Time	Male	Female	Enrolled Part-Time	Male	Female	Total Enrolled
Spring 2009	13	6	7	5	1	4	18
Spring 2010	26	22	4	1	1	0	27
Spring 2011	40	20	20	16	8	8	56
Spring 2012	14	7	7	2	0	2	16
Spring 2013	35	15	20	3	0	3	38
Spring 2014	27	13	14	2	0	2	29

### New Transfers for Spring - Associate Program

Term	Enrolled Full-Time	Male	Female	Enrolled Part-Time	Male	Female	Total Enrolled
Spring 2009	2	2	0	0	0	0	2
Spring 2010	6	2	4	0	0	0	6
Spring 2011	21	17	4	10	9	1	31
Spring 2012	25	17	8	23	22	1	48
Spring 2013	11	2	9	5	3	2	16
Spring 2014	8	3	5	19	15	4	27

---

### Summer Enrollment by Class

Class	2008	2009	2010	2011	2012	2013	2014
Freshman	44	161	201	188	162	34	59
Sophomore	75	72	115	113	107	61	61
Junior	83	60	58	82	65	55	46
Senior	126	115	125	146	142	94	82
Non-Degree	95	0	43	18	80	32	109
<b>Headcount Total</b>	<b>423</b>	<b>422</b>	<b>542</b>	<b>547</b>	<b>556</b>	<b>276</b>	<b>357</b>

---

### FTE by Summer Semesters

Term	2008	2009	2010	2011	2012	2013	2014
Summer	116	138	192	208	182	80	85



---

**Retention of First-Time, Full-Time Students**  
Fall to Fall

	2008 to 2009	2009 to 2010	2010 to 2011	2011 to 2012	2012 to 2013	2013 to 2014
<b>Bachelor's</b>	56%	58%	70% <sup>1</sup>	65%	63%	65%
<b>Associate's</b>	38%	55%	48%	36%	47%	48%
<b>Total</b>	55%	58%	59%	52%	55%	59%

---

**Retention of All Students**  
Fall to Fall

	2008 to 2009	2009 to 2010	2010 to 2011	2011 to 2012	2012 to 2013	2013 to 2014
<b>Degree Seeking</b>	56%	64%	50%	49%	49%	51%
<b>Degree and Non-Degree Seeking</b>	56%	53%	53%	48%	46%	44%

<sup>1</sup>Reflects new admissions standards.

---

**Full-Time Students - Baccalaureate Retention**  
Fall to Fall

	2008 - 2009	2009 - 2010	2010 - 2011	2011 - 2012	2012 - 2013	2013 - 2014
<b>First-Time Freshmen</b>	56%	58%	70% <sup>1</sup>	65%	63%	65%
<b>All Freshmen</b>	63%	66%	68%	66%	62%	62%
<b>Sophomore</b>	71%	79%	82%	76%	76%	81%
<b>Junior</b>	78%	78%	84%	81%	81%	74%

---

**Full-Time Students - Associate Retention**  
Fall to Fall

	2008 - 2009	2009 - 2010	2010 - 2011	2011 - 2012	2012 - 2013	2013 - 2014
<b>First-Time Freshmen</b>	38%	55%	47%	36%	47%	48%
<b>All Freshmen</b>	45%	62%	46%	44%	50%	50%
<b>Sophomore</b>	71%	78%	69%	61%	61%	63%

<sup>1</sup>Increased criteria – based associate degree placement.

---

**Retention of First-Time, Full-Time Students**  
Fall to Spring

	2008 to 2009	2009 to 2010	2010 to 2011	2011 to 2012	2012 to 2013	2013 to 2014
<b>Bachelor's</b>	88%	83%	87%	83%	86%	84%
<b>Associate's</b>	79%	84%	75%	77%	75%	74%
<b>Total</b>	87%	83%	81%	80%	80%	79%

---

**Retention of All Students**  
Fall to Spring

	2008 to 2009	2009 to 2010	2010 to 2011	2011 to 2012	2012 to 2013	2013 to 2014
<b>Degree Seeking</b>	78%	81%	75%	78%	79%	72%
<b>Degree and Non-Degree Seeking</b>	56%	53%	53%	68%	68%	59%

---

**Full-Time Students - Baccalaureate Retention**  
Fall to Spring

	2008 - 2009	2009 - 2010	2010 - 2011	2011 - 2012	2012 - 2013	2013 - 2014
<b>First-Time Freshmen</b>	88%	83%	87%	83%	86%	84%
<b>All Freshmen</b>	90%	83%	83%	83%	84%	82%
<b>Sophomore</b>	85%	85%	90%	92%	88%	90%
<b>Junior</b>	92%	93%	90%	91%	92%	90%

---

**Full-Time Students - Associate Retention**  
Fall to Spring

	2008 - 2009	2009 - 2010	2010 - 2011	2011 - 2012	2012 - 2013	2013 - 2014
<b>First-Time Freshmen</b>	79%	84%	75%	77%	75%	76%
<b>All Freshmen</b>	80%	85%	73%	74%	75%	70%
<b>Sophomore</b>	85%	100%	95%	77%	82%	83%

---

**Retention of First-Time, Full-Time Students – Spring Admits**  
Spring to Fall

	2008 - 2008	2009 - 2009	2010 - 2010	2011 - 2011	2012 - 2012	2013 - 2013	2014 - 2014
<b>Bachelor's</b>	52%	59%	57%	54%	67%	36%	60%
<b>Associate's</b>	29%	50%	33%	57%	56%	69%	33%
<b>Total</b>	51%	57%	48%	56%	59%	53%	50%

---

**Retention of All Students**  
Spring to Fall

	2008 - 2008	2009 - 2009	2010 - 2010	2011 - 2011	2012 - 2012	2013 -2013	2014 - 2014
<b>Degree Seeking</b>	41%	63%	69%	67%	64%	61%	65%
<b>Degree and Non-Degree Seeking</b>	64%	63%	65%	65%	60%	58%	59%

---

**Full-Time Students - Baccalaureate Retention**  
Spring to Fall

	2008 - 2008	2009 - 2009	2010 - 2010	2011 - 2011	2012 - 2012	2013 - 2013	2014 - 2014
<b>All Freshmen</b>	65%	65%	69%	72%	69%	66%	71%
<b>Sophomore</b>	75%	77%	90%	88%	90%	84%	84%
<b>Junior</b>	73%	77%	85%	93%	79%	89%	85%

---

**Full-Time Students - Associate Retention**  
Spring to Fall

	2008 - 2008	2009 - 2009	2010 - 2010	2011 - 2011	2012 - 2012	2013 - 2013	2014 - 2014
<b>All Freshmen</b>	70%	44%	61%	55%	52%	62%	56%
<b>Sophomore</b>	59%	55%	58%	70%	76%	78%	79%

---

### Six-Year Graduation Rates

Started and Completed at Same Institution

First-Time, Full-Time Students (Entering Year)							
	2002	2003	2004	2005	2006	2007	2008
Glenville State College Baccalaureate	26%	33%	28%	30%	31%	29%	28%
All WV State Colleges Baccalaureate Avg.	45%	46%	45%	45%	45%	44%	44%

---

### Five-Year Graduation Rates

Started and Completed at Same Institution

First-Time, Full-Time Students (Entering Year)							
	2003	2004	2005	2006	2007	2008	2009
Glenville State College	26%	25%	24%	26%	25%	23%	26%

---

### Four-Year Graduation Rates

Started and Completed at Same Institution

First-Time, Full-Time Students (Entering Year)							
	2004	2005	2006	2007	2008	2009	2010
Glenville State College	26%	16%	18%	13%	11%	16%	22%

---

---

**Six-Year Graduation Rates**  
**Baccalaureate Students Receiving Athletic-Related Financial Aid (Entering Year)**

<b>Entering Year</b>	<b>First-Time Full-Time Freshmen</b>	<b>Certificate or Associates Received</b>	<b>Bachelors Received</b>	<b>Percentage</b>
Fall 1998	51	0	23	45.1%
Fall 1999	51	0	18	35.3%
Fall 2000	43	0	18	41.9%
Fall 2001	45	0	18	40.0%
Fall 2002	41	0	19	46.3%
Fall 2003	37	1	10	29.7%
Fall 2004	47	1	19	42.6%
Fall 2005	65	0	19	29.0%
Fall 2006	68	0	23	33.8%
Fall 2007	35	0	14	41.0%



## Full-Time Enrollment by Degree Program

Term		Total
Fall 2008		1123
	Associate	57
	Baccalaureate	1066
	Non-Degree	0
Fall 2009		1156
	Associate	71
	Baccalaureate	1070
	Non-Degree	15
Fall 2010 <sup>1</sup>		1277
	Associate	324
	Baccalaureate	938
	Non-Degree	15
Fall 2011		1188
	Associate	290
	Baccalaureate	897
	Non-Degree	1
Fall 2012		1232
	Associate	331
	Baccalaureate	859
	Non-Degree	42
Fall 2013		1114
	Associate	265
	Baccalaureate	828
	Non-Degree	21
Fall 2014		1038
	Associate	201
	Baccalaureate	827
	Non-Degree	10

<sup>1</sup> Students with low test scores & GPA or deficient HS course work assigned to associate program.

## Part-Time Enrollment by Degree Program

Term		Total
Fall 2008		320
	<i>Associate</i>	1
	<i>Baccalaureate</i>	319
	<i>Non-Degree</i>	0
Fall 2009		565
	<i>Associate</i>	3
	<i>Baccalaureate</i>	47
	<i>Non-Degree</i>	515
Fall 2010 <sup>1</sup>		551
	<i>Associate</i>	330
	<i>Baccalaureate</i>	47
	<i>Non-Degree</i>	174
Fall 2011		669
	<i>Associate</i>	307
	<i>Baccalaureate</i>	55
	<i>Non-Degree</i> <sup>2</sup>	307
Fall 2012		666
	<i>Associate</i>	271
	<i>Baccalaureate</i>	50
	<i>Non-Degree</i>	345
Fall 2013		736
	<i>Associate</i>	311
	<i>Baccalaureate</i>	53
	<i>Non-Degree</i>	372
Fall 2014		764
	<i>Associate</i>	289
	<i>Baccalaureate</i>	61
	<i>Non-Degree</i>	414

<sup>1</sup> Adjusted ACT and SAT requirements limiting number of students admitted to a baccalaureate program.

<sup>2</sup> Includes more DMAPS students.

## Enrollment by Academic Program

Program	Fall 2007	Fall 2008	Fall 2009	Fall 2010	Fall 2011	Fall 2012	Fall 2013	Fall 2014
<b>Art (BA) (Start 2012)</b>	NA	NA	NA	NA	NA	5	13	9
Graphics & Digital Media	NA	NA	NA	NA	NA	NA	NA	7
Studio Art	NA	NA	NA	NA	NA	NA	NA	1
<b>Total</b>	NA	NA	NA	NA	NA	5	13	17
<b>Behavioral Sciences</b>								
Behavioral Science (BSBS) (end 2001 as major)	0	1	NA	NA	NA	NA	NA	NA
Basic & Applied Psychology (end 2001)	5	2	1	NA	NA	NA	NA	NA
Criminal Justice (BSBS)	109	97	59	36	14	10	1	0
Psychology/Sociology	77	85	76	82	94	93	96	91
<b>Total</b>	191	185	136	118	108	103	97	91
<b>Biology (BS)</b>	49	50	43	55	51	41	33	41
<b>Business Administration</b>								
Accounting (BSBA)	39	45	27	19	25	34	33	28
Computer Science/Information Systems (BSBA)	18	18	14	15	23	24	27	25
Management (BSBA)	90	87	71	66	64	42	50	49
Marketing (BSBA)	21	21	19	23	20	14	10	13
Resort Area Management (BSBA)(start 2005)	0	0	4	5	4	4	6	8
Sport Management (BS) (start 2005)	54	44	52	57	49	65	71	60
<b>Total</b>	222	215	187	185	185	183	197	183
<b>Business Management (BS) (2+2 Program)</b>	1	0	4	5	5	2	0	0
<b>Chemistry (BA)</b>	16	13	15	18	8	6	6	8

### Enrollment by Academic Program (continued)

Program	Fall 2007	Fall 2008	Fall 2009	Fall 2010	Fall 2011	Fall 2012	Fall 2013	Fall 2014
<b>Criminal Justice</b> (BS) (Start 2009)	NA	NA	41	53	77	85	95	117
<b>Education</b>								
Biological Science (9-adult) (BAED)	5	7	5	2	6	6	3	4
Business Ed Comprehensive (5-adult) (BAED)	5	6	5	5	7	7	4	2
Chemistry (9-adult) (BAED)	3	13	1	1	4	2	1	0
Chemistry & Physics (9-adult) (BAED)	1	0	1	2	2	3	3	3
Early Education (PreK-K) (BAED)	96	85	88	102	76	19 <sup>1</sup>	1	1
Elementary Education (K-6) (BAED)	2	41	8	7	7	85 <sup>1</sup>	102	93
English (5-9) (BAED)	12	8	13	16	6	1	0	0
English (5-adult) (BAED)	19	25	20	24	22	14	16	17
General Science (5-9) (BAED)	4	1	3	3	3	0	0	0
General Science (5-adult) (BAED)	1	1	4	5	5	3	1	1
Health (5-adult) (end 2010)	0	0	2	3	2	2	NA	NA
Health/Physical Education (PreK-adult)(start 2008)	NA	NA	12	24	33	25	22	13
Math (5-9) (General Math/Algebra) (BAED)	10	11	10	11	7	1	1	1
Math (5-adult) (BAED)	14	10	11	13	10	13	12	18
Multi-Categorical (K-6) (start 2006)	0	0	25	20	22	7	0	0
Multi-Categorical (Special Ed) (K-adult)(end 2006)	29	29	3	1	1	0	0	0
Music (non-specified) (BAED)(PreK-adult)	42	45	33	35	34	34	28	32
Physical Education (PreK-adult) (BAED)	56	54	51	26	13	4	1	0
Social Studies (5-adult) (BAED)	36	33	31	31	30	33	27	27
Social Studies (5-9) (BAED)	12	7	13	9	7	1	1	1
Spanish (5-adult) (BAED)(start 2008)	NA	0	1	3	4	1	2	1
<b>Total</b>	347	376	340	343	301	261	225	214
<b>English (BA)</b>								
	14	19	17	16	22	16	14	14

### Enrollment by Academic Program (continued)

Program	Fall 2007	Fall 2008	Fall 2009	Fall 2010	Fall 2011	Fall 2012	Fall 2013	Fall 2014
<b>Health &amp; Human Performance BS (Start Fall 2014)</b>								
Athletic Conditioning/Coaching	NA	NA	NA	NA	NA	NA	NA	1
Exercise Science	NA	NA	NA	NA	NA	NA	NA	7
Health Promotions	NA	NA	NA	NA	NA	NA	NA	0
Nursing (2 year collab. WVU/Tech End Fall 2011)	60	47	24	34	0	0	0	0
Pre-Nursing ( 1 year intro/collab.Fall 2011)	NA	NA	NA	NA	27	26	18	14
<b>Total</b>	NA	NA	NA	NA	NA	NA	NA	8
<b>History (BA) (renamed 2009)</b>	15	18	19	12	6	2	0	0
<b>History &amp; Political Science (BA)(new code 2009)</b>	NA	NA	NA	4	6	12	14	12
<b>Interdisciplinary Studies (BA/BS)</b>	0	1	0	0	1	1	1	1
<b>Music (BA) (new 2007)</b>	0	0	9	12	16	14	18	22
<b>Natural Resource Management (BS)</b>	104	106	97	110	111	114	123	127
<b>Regents Bachelor of Arts (BORBA)</b>	16	9	12	10	18	21	13	12
<b>Undeclared</b>	35	61	51	9 <sup>1</sup>	10	18	14	7

## Enrollment by Academic Program (continued)

<b>Associate Programs</b>								
Criminal Justice (AS)	7	9	13	193 <sup>2</sup>	146	132	251	203
Forest Technology (AS)	18	13	8	13	12	14	16	12
General Business (AA)	16	27	18	227 <sup>2</sup>	247	226	158	181
General Studies (AA)	16	21	143	206	176	210	139	82
Land Surveying (AS)	12	14	13	15	16	19	10	12
<b>Total</b>	69	84	195	654	597	601	574	490
<b>Non-Degree Seeking</b>								
<b>Total Headcount</b>	286	263	541	190 <sup>2</sup>	308	387	395	424
<b>Total Headcount</b>	<b>1441</b>	<b>1443</b>	<b>1721</b>	<b>1828</b>	<b>1857</b>	<b>1898</b>	<b>1850</b>	<b>1802</b>

<sup>1</sup> Classification changed to work better during the evaluation process for Degree Works.

<sup>2</sup> FCI (AA Business) and DMAP (AS Criminal Justice) students entered as degree seeking.

## Graduation by Academic Programs

Program	2007-08	2008-09	2009-10	2010-11	2011-12	2012-13	2013-14
<b>Art (BS)</b>	NA	NA	NA	NA	NA	NA	2
<b>Behavioral Science (BS)</b>	6	1	0	0	0	1	0
Psychology/Sociology	4	19	14	16	18	24	29
Criminal Justice	9	17	13	13	9	3	1
Basic & Applied Psychology ( <i>discontinued</i> )	1	3	2	0	0	0	0
<b>Total</b>	20	40	29	29	27	28	30
<b>Biology (BS)</b>	3	8	6	3	4	5	2
<b>Business Administration (BSBA)</b>							
Accounting (BSBA)	3	16	2	6	4	4	6
General Business (BSBA)	0	0	0	0	0	0	0
Computer and Information Systems (BSBA)	1	2	3	2	0	6	1
Management (BSBA)	5	13	8	11	13	7	12
Marketing (BSBA)	4	1	2	4	1	5	0
Resort Area Management	0	0	0	0	1	0	0
Sport Management (BA) ( <i>discontinued 2001</i> )	0	3	1	4	0	0	0
Sport Management (BS) ( <i>start 2005</i> )	0	0	0	0	6	9	5
<b>Total</b>	13	35	16	27	27	31	24
<b>Business Mgmt (BS) (2+2 Program ended)</b>	0	0	0	0	2	0	0
<b>Chemistry (BA)</b>	5	5	0	4	1	2	4
<b>Criminal Justice (BS) (<i>Start Aug 2009</i>)</b>	NA	NA	1	1	0	18	19
<b>Education</b>							
Biological Science (9-Adult)	0	0	1	0	1	1	0
Business Ed Comprehensive (5-Adult) (BAED)	1	0	2	2	0	1	1
Chemistry (9-12) (BAED)	1	0	0	0	0	0	0
Early Education (PreK-K) (BAED)	14	10	11	23	18	6	0

### Graduation by Academic Programs (continued)

Program	2007-08	2008-09	2009-10	2010-11	2011-12	2012-13	2013-14
<b>Education (continued)</b>							
Elementary Education (BAED)	11	0	1	1	0	9	24
English (5-Adult) (BAED)	1	5	0	4	2	3	5
English (5-9) (BAED)	0	4	2	4	1	0	0
Chemistry & Physics (9-Adult)	0	0	0	0	0	0	1
General Science (5-Adult) (BAED)	0	0	0	0	1	2	0
General Science (5-9) (BAED)	1	1	0	1	0	0	0
Health/Physical Education (PreK-Adult)(BAED)	NA	NA	NA	0	1	4	4
Math (5-Adult) (BAED)	0	2	2	3	1	1	0
Math (5-9) (BAED)	0	2	3	2	1	1	1
Multi-Categorical (K-Adult) (BAED)(End 2006)	6	6	5	0	0	0	0
Multi-Categorical (K-6) (BAED)	1	0	1	4	2	1	0
Music (PreK-Adult) (BAED)	8	2	1	4	5	5	5
Physical Education (PreK-Adult) (BAED)	5	6	4	2	4	0	0
Social Studies (5-Adult) (BAED)	2	4	3	7	1	3	4
Social Studies (5-9) (BAED)	0	0	1	1	0	2	0
Spanish Education (BAED)(Start 2009)	NA	NA	0	0	1	0	0
<b>Total</b>	<b>51</b>	<b>42</b>	<b>37</b>	<b>58</b>	<b>39</b>	<b>39</b>	<b>45</b>
<b>English (BA)</b>	<b>0</b>	<b>1</b>	<b>1</b>	<b>3</b>	<b>3</b>	<b>2</b>	<b>8</b>
<b>History (BA)</b>	<b>2</b>	<b>7</b>	<b>3</b>	<b>2</b>	<b>2</b>	<b>0</b>	<b>0</b>
<b>History Political Science (<i>new major code</i>)</b>	<b>0</b>	<b>0</b>	<b>1</b>	<b>1</b>	<b>1</b>	<b>1</b>	<b>5</b>
<b>Interdisciplinary Studies (BA/BS)</b>	<b>0</b>	<b>1</b>	<b>1</b>	<b>0</b>	<b>1</b>	<b>2</b>	<b>3</b>
<b>Music</b>	<b>0</b>	<b>1</b>	<b>3</b>	<b>1</b>	<b>5</b>	<b>2</b>	<b>3</b>
<b>Natural Resource Management (BS)</b>	<b>21</b>	<b>28</b>	<b>15</b>	<b>16</b>	<b>19</b>	<b>24</b>	<b>16</b>
<b>Regents Bachelor of Arts (BORBA)</b>	<b>8</b>	<b>16</b>	<b>20</b>	<b>16</b>	<b>22</b>	<b>20</b>	<b>15</b>



### Graduation by Academic Programs (continued)

Program	2007-08	2008-09	2009-10	2010-11	2011-12	2012-13	2013-14
<b>Associate Degrees</b>							
Administrative Science ( <i>discontinued 2004</i> )	2	0	0	0	0	0	0
General Business	2	12	8	18	27	7	12
Criminal Justice (AS)	2	1	2	0	12	10	11
Forest Technology (AS)	10	12	7	9	12	8	11
General Studies (AA)	20	3	2	1	3	1	5
Land Surveying (AS)	2	7	10	8	4	5	8
Paralegal Technology (AS)( <i>discontinued</i> )	1	0	0	0	0	0	0
<b>Total</b>	39	35	29	36	58	31	47
<b>Grand Total</b>	164	219	161	197	209	205	223

---

### Degrees Conferred

Degree Type	2007-08	2008-09	2009-10	2010-11	2011-12	2012-13	2013-14
Associate Degree	30	31	29	36	58	31	47
Baccalaureate Degree	188	179	132	161	151	174	176
Total	218	210	161	197	209	205	223

## Student Profile

Fall 2008 – Fall 2014

	Fall 2008		Fall 2009		Fall 2010		Fall 2011		Fall 2012		Fall 2013		Fall 2014	
	Number	Percent	Number	Percent	Number	Percent	Number	Percent	Number	Percent	Number	Percent	Number	Percent
Students Total	1443	100%	1721	100%	1828	100%	1857	100%	1898	100%	1850	100%	1802	100%
Gender														
Male	813	56%	978	57%	1010	55%	1078	58%	1117	59%	1055	57%	1043	58
Female	630	44%	743	43%	818	45%	779	42%	781	41%	795	43%	759	42
Residence														
WV Resident	1272	88%	1547	90%	1624	89%	1630	88%	1607	85%	1582	86%	1560	87
Non-Resident	171	12%	174	10%	204	11%	227	12%	291	15%	268	14%	242	13
Attendance Status														
Full-Time	1123	78%	1156	67%	1277	70%	1188	64%	1232	65%	1114	60%	1038	58%
Part-Time	320	22%	565	33%	551	30%	667	36%	666	35%	736	40%	764	42%
Ethnicity														
White	1160	80%	1424	83%	1508	82%	1452	78%	1484	78%	1522	82%	1376	76%
African-Amer.	254	18%	249	14%	274	15%	302	16%	323	17%	250	14%	234	13%
Other*	29	2%	48	3%	46	3%	103	6%	91	5%	72	4%	192	11%
Age														
Under 25	1101	76%	1186	69%	1239	68%	1224	66%	1229	64%	1212	66%	1196	66%
25-29	130	9%	174	10%	148	8%	181	10%	209	11%	164	9%	189	11%
30-39	144	10%	223	13%	266	14%	263	14%	258	14%	230	12%	215	12%
40+	68	5%	126	7%	157	9%	189	10%	202	11%	243	13%	202	11%
Unknown			12	1%	18	1%							0	0

---

### Enrollment by Gender – All Students

Term	Total Enrollment	Males	Females	Percentage Male	Percentage Female
Fall 2008	1443	813	630	56%	44%
Fall 2009	1721	978	743	57%	43%
Fall 2010	1828	1010	818	55%	45%
Fall 2011	1857	1078	779	58%	42%
Fall 2012	1898	1117	781	59%	41%
Fall 2013	1850	1055	795	57%	43%
Fall 2014	1802	1043	759	58%	42%

---

### Enrollment by Gender – Excluding FCI & DMAPS

Term	Total Enrollment	Males	Females	Percentage Male	Percentage Female
Fall 2008	1281	652	629	51%	49%
Fall 2009	1351	679	672	50%	50%
Fall 2010	1449	718	731	50%	50%
Fall 2011	1413	733	680	52%	48%
Fall 2012	1455	771	684	53%	47%
Fall 2013	1389	718	671	52%	48%
Fall 2014	1304	668	636	51%	49%

## Enrollment By State of Residence

### Fall

Home of Residence	2008	2009	2010	2011	2012	2013	2014
Alabama	4	2	1	1	3	2	4
California	7	7	11	6	12	20	18
District of Columbia	9	8	14	30	41	33	20
Florida	18	15	20	13	15	10	16
Georgia	4	6	4	8	6	3	3
Illinois	1	2	8	6	9	5	4
Kentucky	0	1	3	1	6	5	1
Maryland	25	18	28	38	30	30	36
Michigan	6	5	4	5	3	2	1
North Carolina	4	1	4	5	3	6	2
New York	5	8	5	12	11	10	3
Ohio	30	30	36	50	47	49	23
Pennsylvania	9	5	4	2	6	5	7
Texas	4	2	2	3	2	0	2
Virginia	32	42	46	57	76	65	46
West Virginia	1269	1547	1624	1601	1607	1582	1560
All Other States	13	20	12	14	16	20	54
Foreign Countries	3	2	2	5	5	3	2
<b>Total</b>	<b>1443</b>	<b>1721</b>	<b>1828</b>	<b>1857</b>	<b>1898</b>	<b>1850</b>	<b>1802</b>

### Enrollment by Ethnicity

Term	White Non-Hispanic	Black Non-Hispanic	Hispanic	Asian or Pacific Islander	American Indian or Alaskan Native	Non-Resident Aliens	Two or more	Minority	Unknown
Fall 2008	1160	254	18	6	5	0	0	20%	0
Fall 2009	1424	249	21	4	7	0	0	16%	16
Fall 2010	1508	274	26	6	10	0	0	17%	4
Fall 2011	1452	302	33	6	15	0	1	19%	48
Fall 2012	1480	323	32	4	13	11	0	20%	35
Fall 2013	1520	247	23	9	7	7	1	16%	36
Fall 2014	1375	232	24	3	0	6	17	16%	145

### Percentage of Enrollment by Ethnicity

Term	White Non-Hispanic	Black Non-Hispanic	Hispanic	Asian or Pacific Islander	American Indian or Alaskan Native	Non-Resident Aliens	Two or more	% Minority	Unknown
Fall 2008	80%	18%	1%	.4%	.3%	0%	0%	20%	
Fall 2009	83%	14%	1%	.2%	.4%	0%	.9%	16%	.9%
Fall 2010	82%	15%	1%	.3%	.5%	0%	.2%	17%	.2%
Fall 2011	78%	16%	2%	.3%	.8%	0%	3%	19%	2.6%
Fall 2012	78%	17%	2%	.2%	.7%	.6%	2%	20%	1.8%
Fall 2013	82%	13%	1%	.5%	.4%	.4%	2%	16%	1.9%
Fall 2014	76%	13%	1%	.2%	0%	.3%	.9%	16%	8%

### Average Age of All Students

Term	Age
Fall 2008	23
Fall 2009 <sup>1</sup>	25
Fall 2010	25
Fall 2011	26
Fall 2012	26
Fall 2013	27
Fall 2014	26

### Students Age 25 and Older – All

Term	Undergraduate Enrollment	Undergraduates 25 Years or Older	Percent
Fall 2008	1443	342	24%
Fall 2009 <sup>1</sup>	1721	523	30%
Fall 2010	1828	589	32%
Fall 2011	1857	633	34%
Fall 2012	1898	669	35%
Fall 2013	1850	637	34%
Fall 2014	1802	606	34%

<sup>1</sup> Change is due to enrollment growth of FCI Gilmer and DMAPS students

---

### Students Age 25 and Older - All Freshmen

Term	Total Freshmen	Freshmen 25 Years or Older	% of Total Freshmen
Fall 2008	490	90	18%
Fall 2009 <sup>1</sup>	569	96	17%
Fall 2010	708	239	34%
Fall 2011	682	236	35%
Fall 2012	680	221	33%
Fall 2013	573	155	27%
Fall 2014	566	144	25%



### Students Age 25 and Older Full-Time

Term	Full-Time Enrollment	Full-Time Students 25 Years or Older	Percent of Full-Time Students 25 Years or Older
Fall 2008	1123	152	14%
Fall 2009 <sup>1</sup>	1156	196	17%
Fall 2010	1277	264	21%
Fall 2011	1188	216	18%
Fall 2012	1232	250	20%
Fall 2013	1114	204	18%
Fall 2014	1038	176	17%

### Students Age 25 and Older Part-Time

Term	Part-Time Enrollment	Part-Time Students 25 Years or Older	Percent of Part-Time Students 25 Years or Older
Fall 2008	320	190	59%
Fall 2009 <sup>1</sup>	565	327	58%
Fall 2010	551	325	59%
Fall 2011	669	417	62%
Fall 2012	666	419	63%
Fall 2013	736	433	59%
Fall 2014	764	430	56%

<sup>1</sup> Change is due to the number of FCI Gilmer and DMAPS students enrolled.

**ACT Scores and SAT Scores - Fall**  
First-Time/Full-Time

			<b>State College</b>
<b>Term</b>	<b>ACT Average</b>	<b>SAT Average</b>	<b>System ACT Average</b>
Fall 2008	19.0	823	20.7
<b>Associate</b>	16.9	740	
<b>Baccalaureate</b>	19.2	828	
Fall 2009	19.1	852	20.7
<b>Associate</b>	18.0	800	
<b>Baccalaureate</b>	19.2	853	
Fall 2010	19.4	836	20.7
<b>Associate</b>	16.3	719	
<b>Baccalaureate</b>	21.6	949	
Fall 2011	19.0	800	20.6
<b>Associate</b>	16.7	745	
<b>Baccalaureate</b>	20.4	858	
Fall 2012	18.9	830	20.6
<b>Associate</b>	17	757	
<b>Baccalaureate</b>	20.5	914	
Fall 2013	18.6	847	20.6
<b>Associate</b>	16.7	733	
<b>Baccalaureate</b>	19.7	927	
Fall 2014	19.3	872	NA
<b>Associate</b>	17.3	723	
<b>Baccalaureate</b>	19.9	908	

---

### ACT Scores and SAT Scores – Spring Admits First-Time/Full-Time

Term	ACT Average	SAT Average
Spring 2009	17.6	815
<b>Associate</b>	14.3	0 <sup>1</sup>
<b>Baccalaureate</b>	19.2	815
Spring 2010	18.7	700
<b>Associate</b>	15.1	0 <sup>1</sup>
<b>Baccalaureate</b>	20.7	700
Spring 2011	18.3	1070
<b>Associate</b>	18	840
<b>Baccalaureate</b>	18.8	1300
Spring 2012	17	750
<b>Associate</b>	16.4	750
<b>Baccalaureate</b>	18.8	0 <sup>1</sup>
Spring 2013	18.8	841
<b>Associate</b>	16.0	770
<b>Baccalaureate</b>	20.5	870
Spring 2014	18.7	935
<b>Associate</b>	15	890
<b>Baccalaureate</b>	20	950

<sup>1</sup> None Submitted

### Grade Point Averages Semester<sup>1</sup>

	2008-09		2009-10		2010-11		2011-12		2012-13		2013-14	
	Fall	Spring	Fall	Spring	Fall	Spring	Fall	Spring	Fall	Spring	Fall	Spring
All Students	2.29	2.47	2.39	2.42	2.29	2.33	2.45	2.70	2.42	2.23	2.16	2.21
All Freshmen	2.03	2.09	2.21	2.20	2.27	2.04	2.28	2.16	2.11	1.89	2.05	1.85
First-Time Full-Time Freshmen	2.20	2.42	2.47	1.96	2.49	2.41	2.41	2.72	2.24	2.94	2.61	2.48

### Grade Point Averages Cumulative<sup>2</sup>

	2008-09		2009-10		2010-11		2011-12		2012-13		2013-14	
	Fall	Spring	Fall	Spring	Fall	Spring	Fall	Spring	Fall	Spring	Fall	Spring
All Students	2.47	2.66	2.56	2.62	2.55	2.61	2.69	2.86	2.38	2.46	2.31	2.45
All Freshmen	2.15	2.32	2.42	2.47	2.53	2.44	2.58	2.46	2.27	2.25	2.17	2.14
First-Time Full-Time Freshmen	2.20	2.41	2.51	2.00	2.49	2.47	2.44	2.76	2.43	2.87	2.61	2.48

<sup>1</sup> Semester GPA shows work completed for the semester.

<sup>2</sup> Cumulative GPA includes the total of all dual credit, transfer, and GSC work.

---

**Enrollment in One or More Developmental Courses – Fall**  
First-Time/Full-Time

<b>Term</b>	<b>Freshmen</b>	<b>Developmental Courses</b>	<b>Percent in Developmental Courses</b>
Fall 2008	303	191	63%
Fall 2009	329	214	65%
Fall 2010	313	189	60%
Fall 2011	284	179	63%
Fall 2012	339	208	61%
Fall 2013	280	190	68%
Fall 2014	264	163	62%

---

**Enrollment in One or More Developmental Courses – Spring Admits**  
First-Time/Full-Time

<b>Term</b>	<b>Freshmen</b>	<b>Developmental Courses</b>	<b>Percent in Developmental Courses</b>
Spring 2008	24	16	67%
Spring 2009	30	24	80%
Spring 2010	33	26	78%
Spring 2011	41	37	90%
Spring 2012	22	16	73%
Spring 2013	27	20	74%
Spring 2014	24	15	63%

---

## West Virginia County Enrollment – Top 25

Fall 2014 with historical figures

County	2008	2009	2010	2011	2012	2013	2014
Braxton	147	165	195	167	180	140	155
Gilmer	231	237	284	219	196	168	153
Gilmer (FCI)	162	191	181	188	175	103	139
Nicholas	56	83	90	66	91	112	90
Lewis	62	72	73	70	72	80	84
Ritchie	48	44	43	80	71	107	82
Webster	24	27	28	23	24	28	62
Fayette	17	26	25	28	27	39	50
Raleigh	13	39	39	30	50	32	50
Randolph	31	44	48	47	50	58	50
Kanawha	39	44	52	51	52	68	48
Calhoun	85	105	99	86	61	83	46
Clay	32	33	38	35	72	52	42
Harrison	29	33	32	44	37	52	36
Berkeley	13	30	21	27	21	31	35
Roane	56	56	54	56	52	51	31
Wood	27	38	44	46	37	39	23
Pocahontas	7	16	8	10	18	20	19
Jackson	17	15	21	20	23	21	18
Mason	2	10	5	17	16	14	17
Barbour	9	9	9	9	12	15	16
Doddridge	12	10	16	14	11	10	16
Logan	3	3	7	5	7	8	16
Upshur	28	23	29	34	33	25	16
Cabell	6	16	12	11	13	17	14
Greenbrier	7	14	13	14	10	14	14

### West Virginia County Enrollment - All

County	2008	2009	2010	2011	2012	2013	2014
Barbour	9	9	9	9	12	15	16
Berkeley	13	30	21	27	21	31	35
Boone	3	4	3	9	7	9	12
Braxton	147	165	195	167	180	140	155
Brooke	1	2	1	1	4	2	3
Cabell	6	16	12	11	13	17	14
Calhoun	85	105	99	86	61	83	46
Clay	32	33	38	35	72	52	42
Doddridge	12	10	16	14	11	10	16
Fayette	17	26	25	28	27	39	50
Gilmer	231	237	284	219	196	168	153
Gilmer (FCI)	162	191	181	188	175	103	139
Grant	4	5	3	3	2	3	7
Greenbrier	7	14	13	14	10	14	14
Hampshire	2	11	6	6	8	1	6
Hancock	5	3	3	4	3	2	2
Hardy	6	3	2	1	5	2	2
Harrison	29	33	32	44	37	52	36
Jackson	17	15	21	20	23	21	18
Jefferson	2	3	7	7	7	6	13
Kanawha	39	44	52	51	52	68	48
Lewis	62	72	73	70	72	80	84
Lincoln	1	4	4	10	7	3	5
Logan	3	3	7	5	7	8	16
Marion	4	4	7	11	10	12	7
Marshall	1	8	6	10	11	7	8
Mason	2	10	5	17	16	14	17
McDowell	0	4	2	10	6	9	12

### West Virginia County Enrollment (continued)

County	2008	2009	2010	2011	2012	2013	2014
<b>Mercer</b>	1	6	7	8	9	7	13
<b>Mineral</b>	9	5	3	1	2	5	4
<b>Mingo</b>	3	2	3	2	4	2	0
<b>Monongalia</b>	3	4	6	5	4	5	7
<b>Monroe</b>	1	3	3	5	3	3	4
<b>Morgan</b>	0	2	2	3	5	4	5
<b>Nicholas</b>	56	83	90	66	91	112	90
<b>Ohio</b>	1	6	2	4	3	4	2
<b>Pendleton</b>	10	6	6	10	18	14	14
<b>Pleasants</b>	6	14	13	7	4	8	8
<b>Pocahontas</b>	7	16	8	10	18	20	19
<b>Preston</b>	2	4	8	4	3	4	7
<b>Putnam</b>	9	8	8	10	13	15	9
<b>Raleigh</b>	13	39	39	30	50	32	50
<b>Randolph</b>	31	44	48	47	50	58	50
<b>Ritchie</b>	48	44	43	80	71	107	82
<b>Roane</b>	56	56	54	56	52	51	31
<b>Summers</b>	4	3	2	7	9	4	6
<b>Taylor</b>	2	5	4	8	10	12	12
<b>Tucker</b>	4	14	4	7	8	7	8
<b>Tyler</b>	4	8	2	5	4	6	5
<b>Upshur</b>	28	23	29	34	33	25	16
<b>Wayne</b>	0	0	4	5	4	5	6
<b>Webster</b>	24	27	28	23	24	28	62
<b>Wetzel</b>	1	9	5	8	5	8	8
<b>Wirt</b>	13	19	22	17	12	14	12
<b>Wood</b>	27	38	44	46	37	39	23
<b>Wyoming</b>	4	7	10	8	5	6	11



Residence Hall Occupancy Rates							
Spring 2014							
Hall Name	Room Type	# of rooms	Max # students	# occupants	Occupancy Rates	Male	Female
<b>Goodwin</b>	Single	192	192	156	81%	92	63
	Double	145	290	186	64%	129	57
	<b>Total</b>	<b>337</b>	<b>482</b>	<b>342</b>	<b>71%</b>	<b>221</b>	<b>120</b>
<b>Pioneer Village</b>	Single	156	156	105	67%	64	41
<b>Sub Total</b>	Single	348	348	261	75%	156	104
<b>Sub Total</b>	Double	145	290	186	64%	129	57
	<b>Total</b>	<b>493</b>	<b>638</b>	<b>447</b>	<b>70%</b>	<b>285</b>	<b>161</b>
<b>Pickens</b>	APT	6	12	1	8%	1	0
	Single	0	0	0	0%	0	0
	Double	12	24	5	21%	4	1
<b>Grand Totals</b>		<b>511</b>	<b>674</b>	<b>452</b>	<b>67%</b>	<b>290</b>	<b>162</b>

Calculated on the end of the 2<sup>nd</sup> week of class.

Residence Hall Occupancy Rates							
Fall 2014							
Hall Name	Room Type	# of rooms	Max # students	# occupants	Occupancy Rates	Male	Female
Goodwin	Single	192	192	181	94%	105	76
	Double	145	290	236	82%	151	85
	<b>Total</b>	<b>337</b>	<b>482</b>	<b>417</b>	<b>87%</b>	<b>256</b>	<b>161</b>
Pioneer Village	Single	156	156	125	80%	84	41
Sub Total	Single	348	348	306	88%	189	117
Sub Total	Double	145	290	236	82%	151	85
	<b>Total</b>	<b>493</b>	<b>638</b>	<b>542</b>	<b>85%</b>	<b>340</b>	<b>202</b>
Pickens	APT	6	12	6	50%	3	3
	Single	0	0	0	0	0	0
	Double	12	24	6	25%	6	0
<b>Grand Totals</b>		<b>511</b>	<b>674</b>	<b>554</b>	<b>83%</b>	<b>349</b>	<b>205</b>

Calculated on the end of the 2<sup>nd</sup> week of class.

### Student/Faculty Ratios<sup>1</sup>

Term	FTE Students	FTE Faculty	FTE Student/Faculty Ratio
Fall 2007	1207	67	18:1
Fall 2008	1262	70	18:1
Fall 2009	1356	74	18:1
Fall 2010	1468	79	19:1
Fall 2011	1412	80	18:1
Fall 2012	1445	93 <sup>2</sup>	16:1
Fall 2013	1330	83	16:1
Fall 2014	1279	81	16:1

<sup>1</sup> Ratios computed by Student FTE (student total credit hours produced / 15) ; Faculty FTE (full-time faculty + 1/3 of part-time faculty)

<sup>2</sup> Reflects an increase in the number of courses being delivered to Adult Learners and High School students (dual credit).

## Full-Time Instructional Faculty by Academic Rank

	Professor		Associate Professor		Assistant Professor		Instructor		Lecturer, Graduate Assistant & Other		
Term	#	%	#	%	#	%	#	%	#	%	Total
Fall 2008	8	13%	16	27%	20	33%	14	24%	2	3%	60
Fall 2009	9	15%	16	27%	22	37%	13	21%	0	0%	60
Fall 2010	10	15%	15	22%	24	36%	18	27%	0	0%	67
Fall 2011	10	15%	18	26%	28	41%	12	18%	0	0%	68
Fall 2012	11	17%	17	25%	29	44%	9	14%	0	0%	66
Fall 2013	11	16%	16	23%	34	49%	8	12%	0	0%	69
Fall 2014	9	13%	20	30%	32	48%	6	9%	0	0%	67

## Full-Time Instructional Faculty by Tenure Status

	Professor			Associate Professor			Assistant Professor			Instructor			Lecturer, Graduate Assistant & Other			Total		
Term	#	Tenured	%	#	Tenured	%	#	Tenured	%	#	Tenured	%	#	Tenured	%	#	Tenured	%
Fall 2008	8	8	100%	16	10	63%	20	2	10%	14	0	0%	2	0	0%	60	20	33%
Fall 2009	9	9	100%	16	11	69%	22	1	5%	13	0	0%	0	0	0%	60	21	35%
Fall 2010	10	10	100%	15	14	93%	24	1	4%	18	0	0%	0	0	0%	67	25	37%
Fall 2011	10	10	100%	18	17	94%	28	2	7%	12	0	0%	0	0	0%	68	29	43%
Fall 2012	11	11	100%	17	16	94%	29	3	10%	9	0	0%	0	0	0%	66	30	45%
Fall 2013	11	11	100%	16	15	94%	34	5	15%	8	0	0%	0	0	0%	69	31	45%
Fall 2014	9	9	100%	20	20	100%	32	4	13%	6	0	0%	0	0	0%	67	33	49%

Source: Faculty and Staff Characteristics – WVHEPC. Data for 2014-15 reflects submission information

### Full-Time Instructional Faculty by Highest Degree Held

Term	Doctoral		Masters		First Professional		Bachelors		Total
	#	%	#	%	#	%	#	%	
Fall 2008	31	52%	28	47%	0	0%	1	2%	60
Fall 2009	32	53%	27	45%	0	0%	1	2%	60
Fall 2010	32	48%	32	48%	1	1%	2	3%	67
Fall 2011	37	54%	29	43%	1	1%	1	1%	68
Fall 2012	35	53%	30	45%	1	2%	0	0%	66
Fall 2013	36	52%	31	45%	2	3%	0	0%	69
Fall 2014	34	51%	31	46%	2	3%	0	0%	67

Source: Faculty and Staff Characteristics – WVHEPC. Data for 2014-15 reflects submission information.

## Part-Time Instructional Faculty by Highest Degree Held

Term	Doctoral		Masters		First Professional		Bachelors		Other		Total
	#	%	#	%	#	%	#	%	#	%	
Fall 2008	4	17%	14	58%	2	8%	4	17%	0	0%	24
Fall 2009	4	10%	25	61%	0	0%	9	22%	3	7%	41
Fall 2010	1	3%	25	69%	4	11%	4	11%	2	6%	36
Fall 2011	1	3%	24	67%	5	13%	6	17%	0	0%	36
Fall 2012 <sup>1</sup>	7	9%	62	76%	3	4%	9	11%	0	0%	81 <sup>1</sup>
Fall 2013	6	14%	28	67%	2	5%	5	12%	1	2%	42
Fall 2014	4	9%	31	76%	2	5%	2	5%	2	5%	41

<sup>1</sup> Reflects an increase in the number of courses being delivered to Adult Learners and High School students (dual credit).

Source: *Faculty and Staff Characteristics – WVHEPC. Data for 2014-15 reflects submission information.*

## Full-Time Instructional Faculty by Gender

Term	Male		Female		Total Number
	Number	Percentage	Number	Percentage	
Fall 2008	36	60%	24	40%	60
Fall 2009	37	62%	23	38%	60
Fall 2010	45	67%	22	33%	67
Fall 2011	46	68%	22	32%	68
Fall 2012	41	62%	25	38%	66
Fall 2013	42	61%	27	39%	69
Fall 2014	42	63%	25	37%	67

Source: Faculty and Staff Characteristics – WVHEPC. Data for 2014-15 reflects submission information.

### Full-Time Instructional Faculty by Ethnicity

	White, Non-Hispanic		Black, Non-Hispanic		Hispanic		Asian or Pacific Islander		American Indian or Alaskan Native			
Term	#	%	#	%	#	%	#	%	#	%	Total	% Minority
Fall 2008	57	95.0%	0	0.0%	1	1.7%	2	3.3%	0	0.0%	60	5.0%
Fall 2009	58	97.0%	0	0.0%	1	1.7%	1	1.7%	0	0.0%	60	3.3%
Fall 2010	63	94.3%	1	1.49%	1	1.49%	2	2.99%	0	0.0%	67	6.0%
Fall 2011	65	95.6%	1	1.47%	1	1.47%	1	1.47%	0	0.0%	68	4.0%
Fall 2012	63	95.5%	1	1.51%	1	1.51%	1	1.51%	0	0.0%	66	4.5%
Fall 2013	65	94.2%	0	0%	1	1.45%	3	4.35%	0	0.0%	69	5.8%
Fall 2014	62	92.5%	0	0%	1	1.49%	4	5.97%	0	0.0%	67	7.5%

Source: Faculty and Staff Characteristics – WVHEPC. Data for 2014-15 reflects submission information.



## Full-Time Instructional Faculty - Average Nine-Month Base Salary<sup>1</sup>

	Professor		Associate Professor		Assistant Professor		Instructor		Lecturer, Graduate Assistant & Other			
Term	#	Salary	#	Salary	#	Salary	#	Salary	#	Salary	Total	Average Salary
Fall 2008	8	\$65,885	16	\$58,216	20	\$46,100	14	\$35,203	2	\$33,243	60	\$48,997
Fall 2009	9	\$64,608	16	\$56,851	22	\$43,158	13	\$35,587	0	\$0	60	\$48,367
Fall 2010	10	\$65,093	15	\$58,224	24	\$45,566	18	\$37,858	0	\$0	67	\$49,244
Fall 2011	10	\$69,249	18	\$60,610	28	\$48,367	12	\$42,015	0	\$0	68	\$53,558
Fall 2012	11	\$69,758	17	\$60,384	29	\$48,981	9	\$40,728	0	\$0	66	\$54,005
Fall 2013	11	\$68,381	16	\$61,692	34	\$48,789	8	\$39,846	0	\$0	69	\$53,867
Fall 2014	9	\$70,711	20	\$63,357	32	\$50,428	6	\$43,748	0	\$0	67	\$56,414

<sup>1</sup>Data does not include pay for extra or extended assignments.

Source: Faculty and Staff Characteristics – WVHEPC. Data for 2014-15 reflects submission information.

### Semester Tuition and Fees 2007-2014

	2007-08	2008-09	2009-10	2010-11	2011-12	2012-13	2013-14	2014-15
<b>Resident</b>	\$2,087	\$2,243	\$2,444	\$2,444	\$2,676	\$2,930	\$3,192	\$3,348
<b>Non-Resident</b>	\$4,995	\$5,369	\$5,851	\$6,000	\$6,360	\$6,912	\$7,200	\$7,560
<b>Metro Rate</b>	NA	\$3,700	\$4,032	\$4,116	\$4,416	\$4,812	\$5,196	\$5,460

### Annual Tuition Comparisons Fall 2014

Institution Name	In-State Tuition	Out-of-State Tuition	Metro Rate	Room & Board
Bluefield State College	\$5,832	\$11,064	\$8,448	NA
Concord University	\$6,422	\$14,118	\$10,118	\$7,818
Fairmont State University	\$6,306	\$13,306	NA	\$7,750
<b>Glenville State College</b>	<b>\$6,696</b>	<b>\$15,120</b>	<b>\$10,920</b>	<b>\$8,810</b>
Shepherd University	\$6,570	\$16,628	NA	\$9,898
West Liberty University	\$6,412	\$13,540	\$11,426	\$8,650
West Virginia State University	\$6,229	\$14,557	\$11,363	\$10,356
<b>Average</b>	<b>\$6,352</b>	<b>\$14,048</b>	<b>\$10,455</b>	<b>\$8,880</b>

Source: College Web sites

## Revenues Summarized<sup>1</sup>

	2010-11	2011-12	2012-13	2013-14
<b>Operating Revenues:</b>				
Tuition and fees	\$7,190,265	\$8,163,110	\$7,899,218	\$7,645,450
Government Contracts and Grants	\$3,825,089	\$3,828,959	\$3,347,424	\$2,834,096
Private gifts, grants, and contracts	\$943,979	\$1,256,253	\$2,965,364	\$4,350,729
Sales and services of educational activities	\$1,359,444	\$1,161,411	\$710,560	\$709,756
Sales and services of auxiliary enterprises	\$4,965,502	\$5,369,938	\$6,482,958	\$6,122,893
Other sources	\$961,581	\$1,035,093	\$936,426	\$854,315
<b>Total Operating Revenues</b>	<b>\$19,245,860</b>	<b>\$20,814,764</b>	<b>\$22,341,950</b>	<b>\$22,517,239</b>
<b>Non-Operating Revenues:</b>				
Government Appropriations	\$6,174,510	\$7,097,804	\$7,206,804	\$6,418,711
Federal PELL Grants	\$3,697,039	\$3,538,833	\$3,351,405	\$2,921,831
Income from investments	\$18,002	\$7,279	\$7,049	\$8,857
<b>Total Non-Operating Revenues</b>	<b>\$9,889,551</b>	<b>\$10,643,916</b>	<b>\$10,565,258</b>	<b>\$9,349,399</b>
<b>Other</b> Capital Proceeds from Commission	\$1,012,300	\$595,893	\$6,315,957	\$3,207,159
Capital Gifts (Private)		\$603,234	\$6,186,663	\$1,097,145
Capital Appropriations from State			\$4,000,000	0
<b>Total revenues</b>	<b>\$30,147,711</b>	<b>\$32,657,807</b>	<b>\$49,409,828</b>	<b>\$36,170,942</b>

<sup>1</sup>See GSC Audited Financial Statements for Full Revenue Reports

## Educational and General (E&G) Expenditures Summarized<sup>1</sup>

	2010-11	2011-12	2012-13	2013-14
<b>Operating Expenses:</b>				
Instruction	\$6,536,173	\$6,942,428	\$6,938,531	\$6,625,178
Academic Support	\$1,114,276	\$1,199,797	\$1,015,399	\$1,004,275
Student Services	\$2,187,213	\$2,199,934	\$2,134,643	\$2,226,537
General Institutional Support	\$5,087,916	\$4,390,695	\$3,716,804	\$3,172,879
Operation and Maintenance of Plant	\$2,635,041	\$3,234,550	\$2,373,187	\$2,406,427
Scholarships and Aid	\$7,718,038	\$8,181,621	\$8,766,163	\$8,090,497
Auxiliary Enterprises	\$4,258,997	\$5,006,064	\$4,704,302	\$4,591,233
Depreciation	\$1,959,465	\$2,082,465	\$1,982,428	\$2,013,731
Fees Assessed by Policy Commission	\$68,357	\$73,500	\$76,705	\$81,304
<b>Total Operating Expenses</b>	<b>\$31,565,476</b>	<b>\$33,311,054</b>	<b>\$31,708,162</b>	<b>\$30,212,061</b>
<b>Non-Operating Expenses:</b>				
Interest on Indebtedness	\$1,233,412	\$1,709,576	\$1,697,499	\$1,735,131
Other	\$14,083	\$41,874	\$18,233	\$141,245
<b>Total Non-Operating Expenses</b>	<b>\$1,247,495</b>	<b>\$1,751,450</b>	<b>\$1,715,732</b>	<b>\$1,876,376</b>
<b>Total Expenditures</b>	<b>\$32,812,971</b>	<b>\$35,062,504</b>	<b>\$33,423,894</b>	<b>\$32,088,437</b>

<sup>1</sup>See GSC Audited Financial Statements for Full Expenditure Reports

---

### Financial Aid Summary First-Time Full-Time Freshmen

	2010-2011	2011-2012	2012-13	2013-14
<b>Applied for Financial Aid</b>	296	284	339	280
<b>Determined to have Financial need</b>	263	244	293	239
<b>Awarded Financial Aid</b>	261	241	290	235
<b>Average Financial Package</b>	\$11,227	\$12,235	\$12,781	\$11,763

---

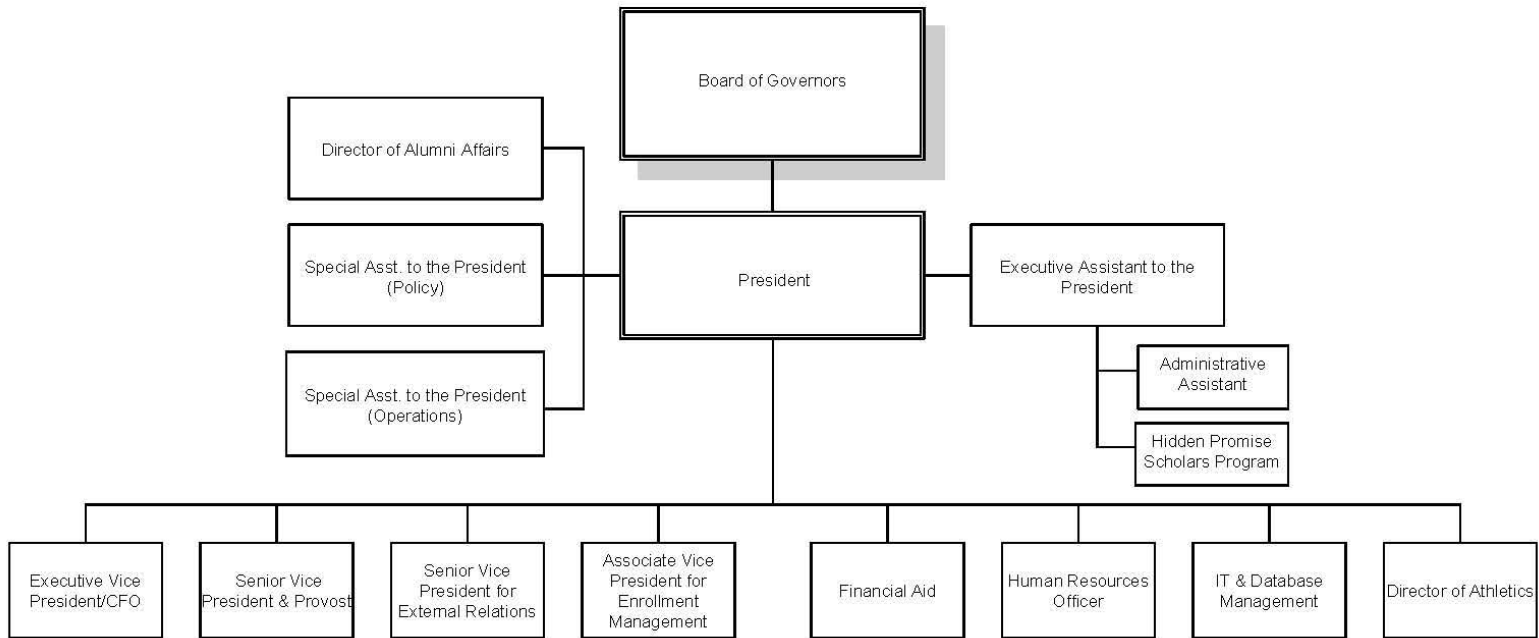
### Financial Aid Processed

	2010-2011	2011-2012	2012-2013	2013-2014
All types of Aid	\$9,759,269	\$9,172,338	\$9,925,466	\$9,185,718
Loans Processed	\$7,279,348	\$7,496,207	\$7,314,086	\$6,210,546
Total	\$17,038,617	\$16,668,545	\$17,239,552	\$15,396,264

---



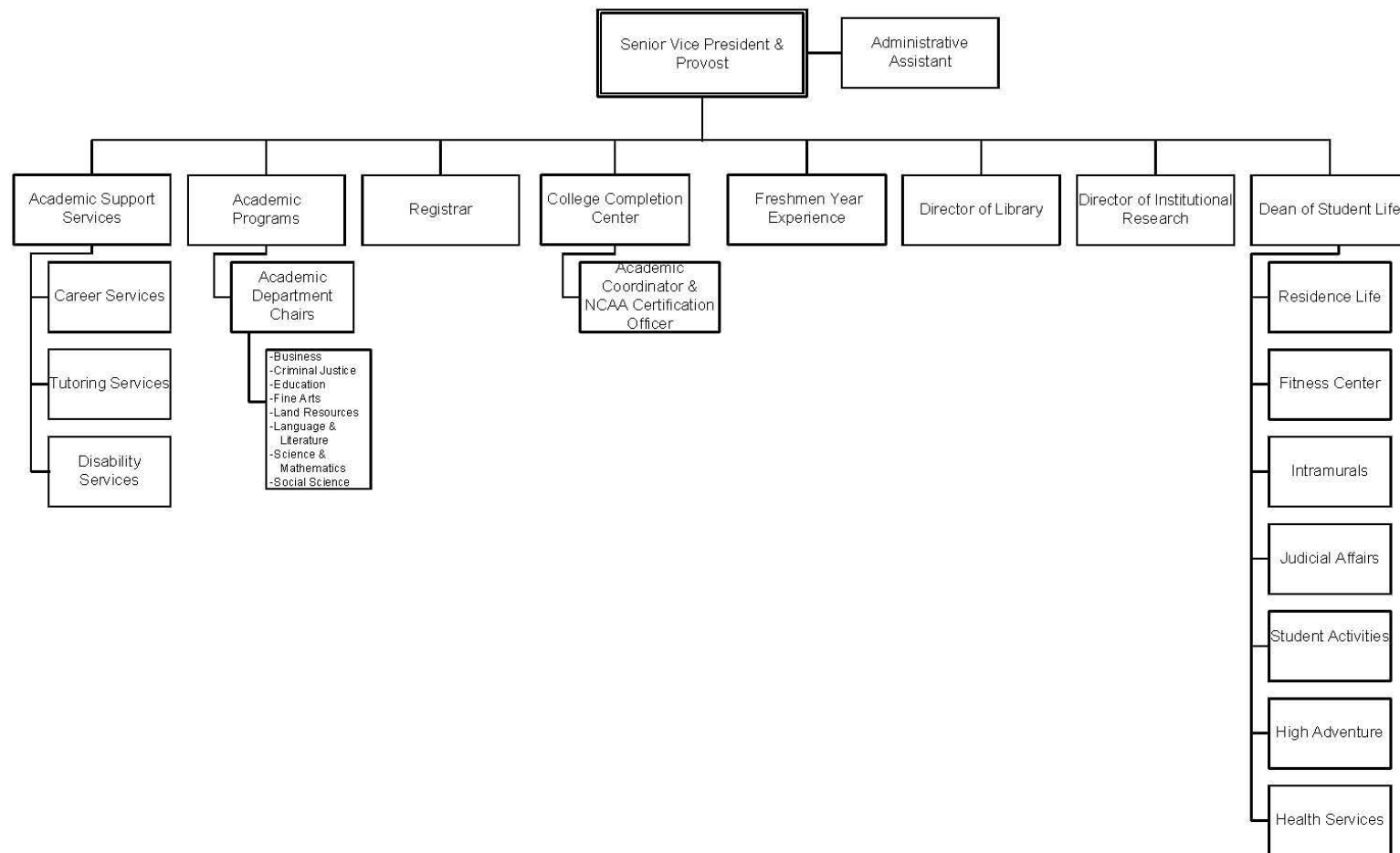
GLENVILLE STATE COLLEGE  
ORGANIZATIONAL CHART  
2014-2015



Updated 06/24/14



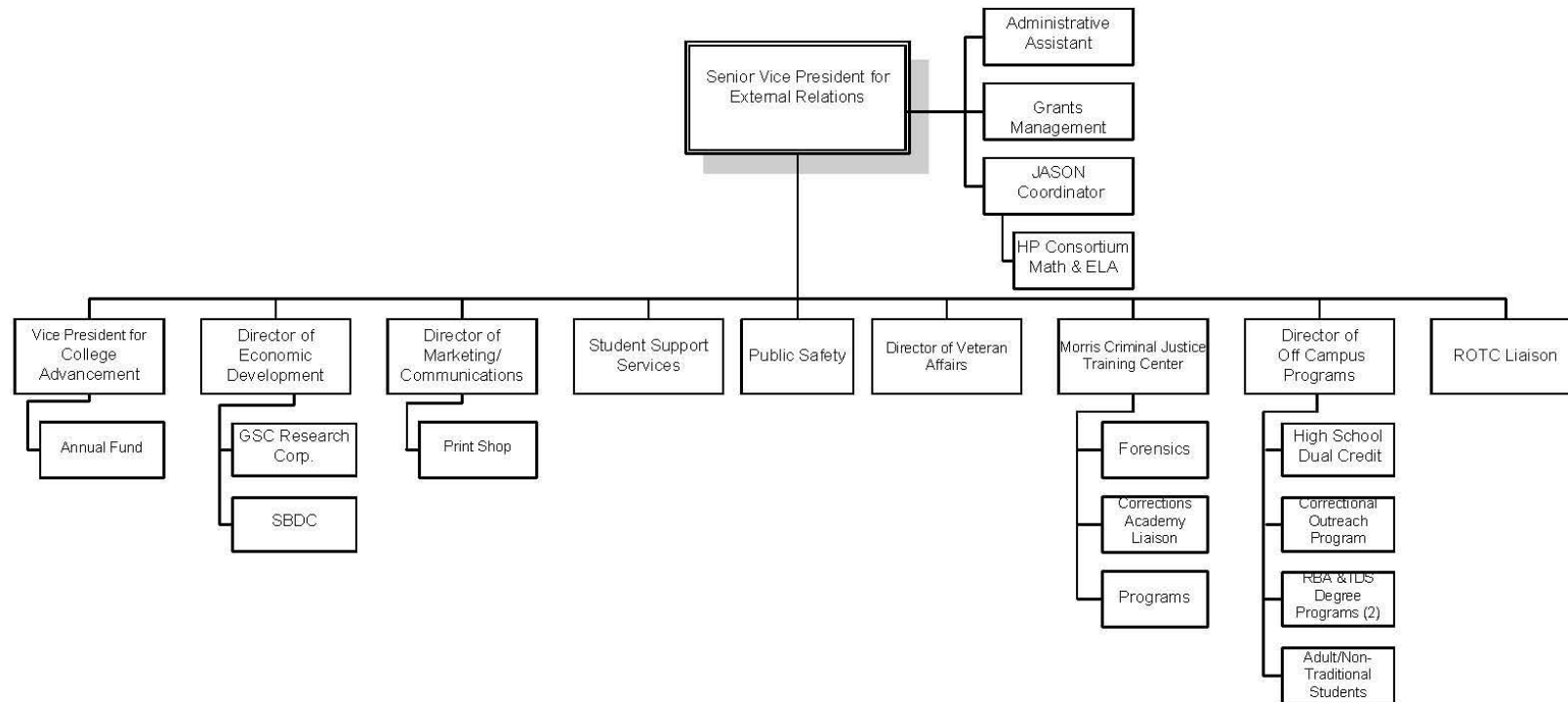
GLENVILLE STATE COLLEGE  
ORGANIZATIONAL CHART  
Senior Vice President & Provost  
2014-2015



Updated 06/24/14



GLENVILLE STATE COLLEGE  
ORGANIZATIONAL CHART  
Senior Vice President for  
External Relations  
2014-2015

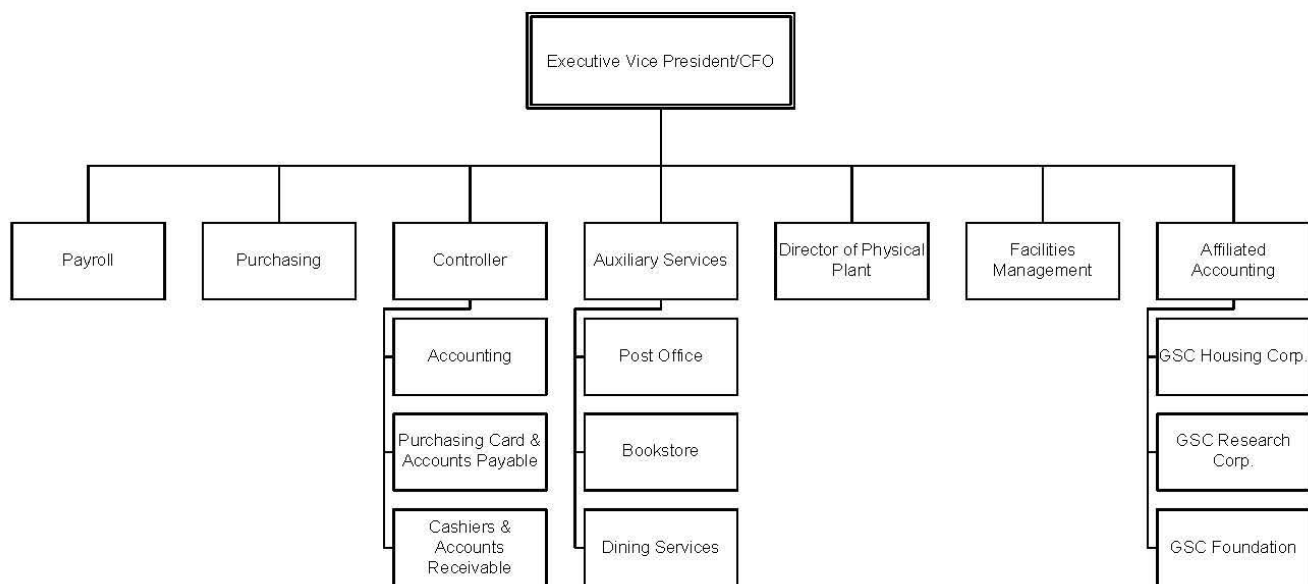


Updated 10/28/14





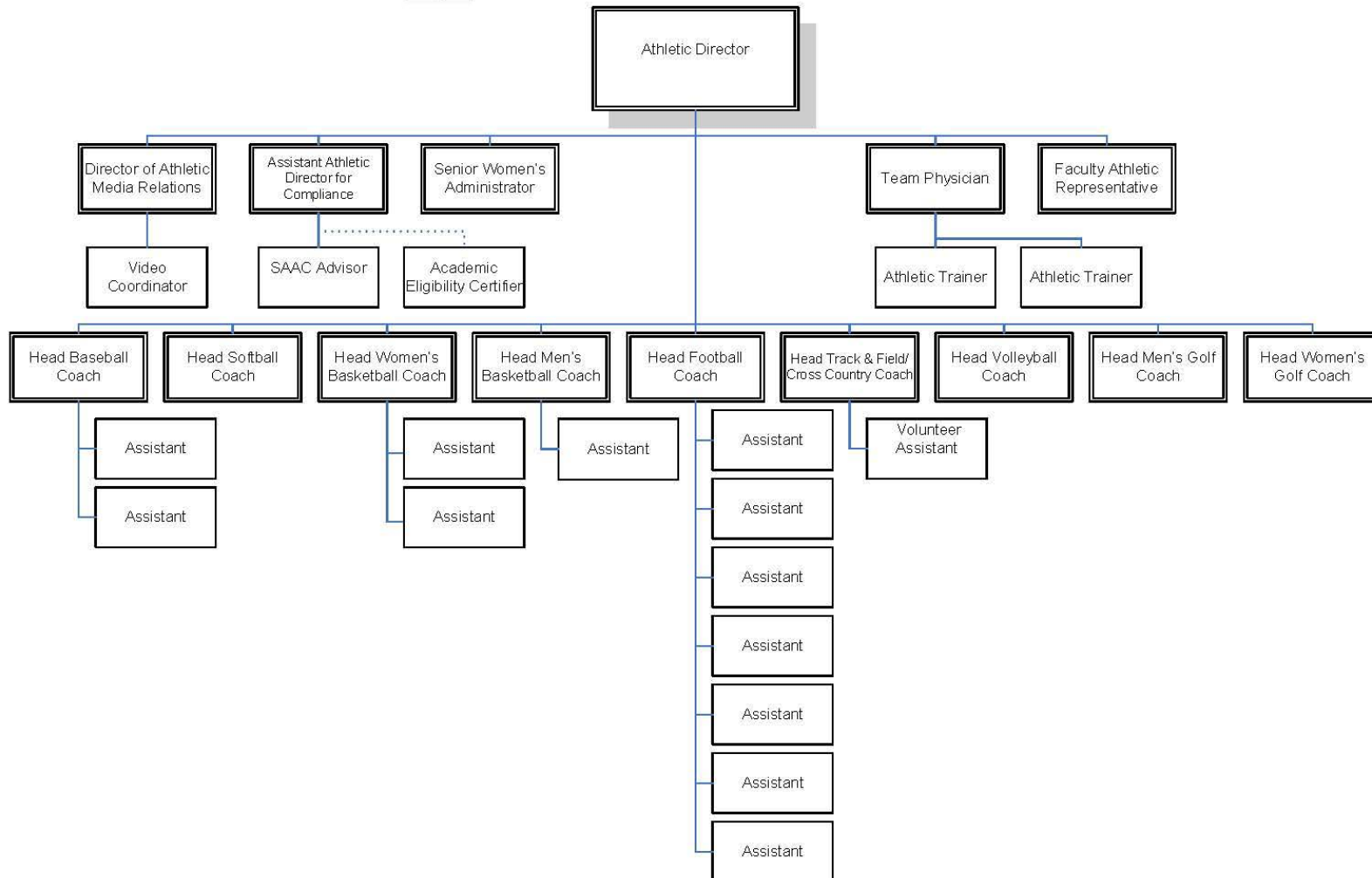
GLENVILLE STATE COLLEGE  
ORGANIZATIONAL CHART  
Executive Vice President of Finance/CFO  
2014-2015



Updated 06/24/14



GLENVILLE STATE COLLEGE  
ATHLETICS ORGANIZATIONAL CHART  
2014-2015



Updated 10/27/14

### Committee Membership – 2014-2015

<b>Academic Appeals</b>	<b>Academic Policy</b>	<b>Assessment Committee</b>	<b>Athletic Committee</b>
Ann Reed, Chair & Adm. Liaison	Jared Wilson, Chair	Rebecca Swisher, Chair	Janet Bailey, Chair /Adm. Liaison
Sallie Anglin	Kelly Treece, Vice-Chair	Shara Curry, Vice Chair	Heather Allman
Art DeMatteo	Glenn Abraham	Neal Benson	Mary Alltop
Jason Barr	Chuck Batson	Chris Cosner	Ashley Bush
Rico Gazal	Ross Conover	Alan Daniel	Joe Evans
Mahesh Khadka	Tara Cosco	Gregory Lemmons	Mandy Frymier
Alison Witte	David Lewis	David O'Dell	Bob Hardman
Gary Morris (Alternate)	Nancy Zane	Marjorie Stewart	Dwight Heaster
Joseph Wood (Alternate)	John Peek, Adm. Liaison	James Witte	Marcal Lazenby
	Allison Taylor	John Peek, Adm. Liaison	Ann Reed
	Jacob Yocum	Allegra Davis	John Royce
			Jim Tatman

<b>College Leadership Council</b>	<b>Commencement/Convocation</b>	<b>Curriculum Committee</b>	<b>Diversity Committee</b>
John Peek, Chair & Adm. Liaison	John Peek, Chair	Gary Morris, Chair	John Peek, Chair & Adm. Liaison
Janet Bailey	Duane Chapman	Mark Mills, Vice-Chair	Liza Brenner
Lloyd Bone	Wayne de Rosset	Chuck Batson	Duane Chapman
Wayne deRosset	Denise Ellyson	Lloyd Bone	Megan Gibbons
Denise Ellyson	Lois Miller	Kevin Cain	Jodi Ocheltree
Kevin Evans	Deb Nagy	Wayne de Rosset	Garrett Rinehart
Bob Hardman	Tom Ratliff	Denise Ellyson	
Ann Reed	Teresa Sterns	Dwight Heaster	
Jim Tatman	David Millard, Adm. Liaison	Ida Mills	
John Taylor		Sara Sawyer	
Milan Vavrek		Milan Vavrek	
Dennis Wemm		Ed Wood	
Conner Ferguson		Melody Wise	
		John Peek, Adm. Liaison	
		Allison Taylor	
		Jacob Yocum	

## Committee Membership – 2014-2015

<b>Enrollment Management</b>	<b>Facilities Committee</b>	<b>Faculty Development</b>	<b>Faculty Senate</b>
Greg King, Chair	Tom Ratliff, Chair/Adm. Liaison	Sara Sawyer, Chair	Dennis Wemm, President
Janet Bailey	Betsy Barr	Jason Barr	Heather Allman
Neal Benson	Jerry Burkhammer	Arthur DeMatteo	Larry Baker
Michael Bobic	Bill Deel	Cinda Echard	Adam Black
Duane Chapman	Bob Hardman	Carmine Grieco	Liza Brenner
Adrian Duelle	Debi Jenkins	Gregory Lemmons	Angela Cline
Cinda Echard	Debra Nagy	Brian Perkins	Alan Daniel
Joe Evans	John Peek	Marjorie Stewart	Art DeMatteo
Josh James	Jason Phares	John Taylor	Cinda Echard
Karen Lay	James Spears	John Peek, Adm. Liaison	Kevin Evans
Jason Phares	Dennis Wemm		Megan Gibbons
Sarah Ratliff	Milan Vavrek		Carmine Grieco
Trae Sprague	Allison Taylor		Ida Mills
Ashley Weir			David O'Dell
Kelsie Tonkin			Paul Peck
			John Taylor
			Kelly Treece
			Jonathan Minton, alternate
			John Peek, Adm. Liaison

<b>Financial Aid Appeals</b>	<b>Homecoming</b>	<b>International Committee</b>	<b>Institutional Review Board</b>
Karen Lay, Chair & Adm. Liaison	Deb Nagy, Chair	John Peek, Chair & Adm. Liaison	Ida Mills, Chair
Robin Cottrill	Janet Bailey	Megan Gibbons	Alan Daniel
Ashley Haddox	Lloyd Bone	Josh James	Carmine Grieco
Jonathan Minton	Jerry Burkhammer	Mahesh Khadka	Sara Sawyer
Ann Reed	Duane Chapman	Ed Wood	Tammy Stewart
Rick Witte	Dustin Crutchfield	Jong-Hoon Yu	John Taylor
	Wayne de Rosset	Dejana Ludoski	Alison Witte
	Jodi Ocheltree	Garrett Rinehart	John Peek, Adm. Liaison
	Jason Phares	Olivia Snyder	
	T Ratliff /T Marks/T Wellings		
	SGA Officers		

### Committee Membership – 2014-2015

<b>Judicial Council</b>	<b>Library Advisory Committee</b>	<b>Promotion &amp; Tenure</b>	<b>Retention Committee</b>
Jerry Burkhammer, Chair	Amy Beckett	Rico Gazal, Chair	John Peek, Chair/Admin Liaison
Heather Allman	Shara Curry	Gary Arbogast	Mary Alltop
Amy Beckett	Jane Friedmann	Liza Brenner	David Bailey
Ashley Bush	Melissa Gish	Art DeMatteo	Duane Chapman
Avan McHenry	Cheryl McKinney	Dennis Wemm	Angela Cline
Duane Chapman, Adm. Liaison	John McKinney	Joe Evans, alternate	Mandy Frymier
Samantha Fulks	Ida Mills		Ross Conover
Quentin Murphy	Gail Westbrook		Melissa Gish
Jared Shipe	Alison Witte		Jason Phares
	Rick Witte		John Royce
	John Peek, Adm. Liaison		Allison Taylor
	Larisa Gordon		
	Garrett Rinehart		

<b>Scholarship Committee</b>	<b>Staff Council</b>	<b>Student Government Association</b>	<b>Student Life</b>
Karen Lay, Chair	Jim Tatman, President	Allison Taylor, President	Duane Chapman, Chair, Adm. Liaison
Duane Chapman	Mary Alltop	Jacob Yocum, Vice President	Heather Allman
Teresa Dody	Carla Conley	Conner Ferguson	Mary Alltop
Denny Pounds	Brittany Frymier	Larisa Gordon	Amy Beckett
Cheryl McKinney	Debi Jenkins	Quentin Murphy	Adam Black
Ashley Weir	Mindy Marsh	John Royce	Jerry Burkhammer
Greg King, Admin Liaison	Lois Miller	Duane Chapman, Adm. Liaison	Avan McHenry
	Jason Phares	Heather Allman, advisor	Ed Wood
	Ann Reed	David Bailey, advisor	Conner Ferguson
	Sheri Skidmore	Larry Baker, advisor	Larisa Gordon
	Eric Squires	Onick Lewis, advisor	Quentin Murphy
	Gail Westbrook		Jared Shipe
	Krystal Smith, Adm. Liaison		Jacob Yocum

## Committee Membership – 2014-2015

<b>Ad hoc/Task Force Committees</b>			
<b>Default Management</b>	<b>Early Intervention Team</b>	<b>HLC Assurance Team</b>	<b>Media</b>
Karen Lay, Chair	John Peek, Chair	John Peek, Chair	John Peek, Chair & Admin Liaison
Stacy Adkins	Jerry Burkhammer	Rick Accord	Dustin Crutchfield
Neal Benson	Duane Chapman	Neal Benson	Jonathan Minton
David Bailey	Ashley Edwards	Duane Chapman	Jodi Ocheltree
Duane Chapman	Joe Evans	Paul Peck	Marjorie Stewart
Carla Conley	Marcal Lazenby	Leslie Ward	Dennis Wemm
Joanna DiStefano	Bill Lilly	Melody Wise	Jennifer Wenner
Mawahna Gifford	Ann Reed		
Ashley Hopkins / Onick Lewis	Ashley Weir		
Bill Lilly			
Ann Reed			
Ashley Weir			
Greg King, Admin Liaison			
<b>Pioneer Showcase</b>	<b>Retention Study Team</b>	<b>Strategic Planning Team</b>	<b>Textbook Affordability</b>
Sara Sawyer, Chair	John Peek, Chair	John Peek, Chair	John Peek, Chair & Admin Liaison
Sallie Anglin	Alan Daniel	Janet Bailey	Gary Arbogast
Amy Beckett	Joe Evans	Jerry Burkhammer	Liza Brenner
Liza Brenner	Greg King	Duane Chapman	Duane Chapman
Angela Cline	Bill Lilly	Kevin Evans	Michael Gherke
Alan Daniel	David Millard	Robert Hardman	Charlotte Squires
Kevin Evans	James Spears	David Millard	Gail Westbrook
Carmine Grieco	Fred Walborn	Lois Miller	
Jonathan Minton		Jason Phares	
John Peek, Admin Liaison		Dennis Pounds	
		Tom Ratliff	
		James Spears	
		Allison Taylor	



