



GLENVILLE
STATE COLLEGE

Fact Book

Fall 2015

Table of Contents

Enrollment Trends	Page
Fall	
Fall Enrollment by Class	1
First-Time Freshmen	2
First-Time Freshmen – Baccalaureate Program	3
First-Time Freshmen – Associate Program	4
New Transfers	5
New Transfers – Baccalaureate Program Enrollment	6
New Transfers – Associate Program Enrollment	6
Total Headcount & FTE by Course Location	7
Total Headcount & FTE by Online Courses	7
Fall Enrollment Headcount Comparison	8
Fall Enrollment FTE Comparison	8
Applicants Accepted and Enrolled – All students	9
Applicants Accepted and Enrolled – First-Time Freshmen	10
Applicants Accepted and Enrolled – Transfer Students	11
Applicants Accepted and Enrolled – Re-Admit Students	12
Spring	
Spring Enrollment by Class	13
FTE by Spring Semesters	13
New First-Time Freshmen for Spring	14
New First-Time Freshmen for Spring – Baccalaureate Program	15
New First-Time Freshmen for Spring – Associate Program	15
New Transfers for Spring	16
New Transfers for Spring – Baccalaureate Program	17
New Transfers for Spring – Associate Program	17
Summer	
Summer Enrollment by Class	18
FTE by Summer Semesters	18

Retention
Rates

Fall to Fall

Retention of First-Time, Full-Time Students , Fall – Fall	19
Retention of All Students – Degree & Non-Degree Seeking, Fall – Fall	19
Full-Time Students Retention Baccalaureate Program, Fall – Fall	20
Full-Time Students Retention Associate Program, Fall – Fall	20

Fall to Spring

Retention of First-Time, Full-Time Students , Fall – Spring	21
Retention of All Students – Degree & Non-Degree Seeking, Fall – Spring	21
Full-Time Students Retention Baccalaureate Program, Fall – Spring	22
Full-Time Students Retention Associate Program, Fall – Spring	22

Spring to Fall

Retention of First-Time, Full-Time Students – Spring Admits, Spring – Fall	23
Retention of All Students – Degree & Non-Degree Seeking, Spring – Fall	23
Full-Time Students Retention Baccalaureate Program, Spring – Fall	24
Full-Time Students Retention Associate Program, Spring – Fall	24

Graduation

Six Year Graduation Rates (First-Time, Full-Time)	25
Five Year Graduation Rates (First-Time, Full-Time)	25
Four Year Graduation Rates (First-Time, Full-Time)	25
Six Year Graduation Rates (received Athletic Related Financial Aid)	26

Program
Profile

Full-Time Enrollment by Degree Program	27
Part-Time Enrollment by Degree Program	28
Enrollment by Academic Program	29
Graduation by Academic Program	33
Degrees Conferred	36

Student Profile

Student Profile Summary	37
Enrollment by Gender	38
Enrollment by State of Residence	39
Enrollment by Ethnicity	40
Average Age of All Students	41
Students Age 25 and Older – All	41
Students Age 25 and Older – All Freshmen	42
Students Age 25 and Older – Full-Time	43
Students Age 25 and Older – Part-Time	43
ACT Scores and SAT Scores – Fall	44
ACT Scores and SAT Scores – Spring Admits	45
Grade Point Averages – Semester	46
Grade Point Averages – Cumulative	46
Enrollment in One or More Developmental Courses - Fall	47
Enrollment in One or More Developmental Courses –Spring Admits	47
West Virginia County Enrollment – Top 25 by number Enrolled	48
West Virginia County Enrollment – by County	49
Residence Hall Occupancy Rates – Spring 2014	51
Residence Hall Occupancy Rates – Fall 2014	52

Faculty Profile

Student/Faculty Ratios	53
Full-Time Faculty by Academic Rank	54
Full-Time Faculty by Tenure Status	54
Full-Time Faculty by Highest Degree Held	55
Part-Time Faculty by Highest Degree Held	56
Full-Time Faculty by Gender	57
Full-Time Faculty by Ethnicity	58
Full Time Instructional Faculty – Average Nine-Month Salary	59

Financial	
Semester Tuition and Fees	60
Annual Tuition Comparisons	60
Revenue Summarized	61
Educational and General (E&G) Expenditures Summarized	62
Financial Aid Summary, First-Time Freshman	63
Financial Aid Processed	63
Organizational Charts	
Board of Governors, President, and Executive Staff	64
Academic and Student Affairs	65
External Relations	66
Business & Finance	67
Athletics	68
Committees	
Academic Appeals, Academic Policy, Assessment, Athletic, College Leadership, Commencement/Convocation, Curriculum, Diversity	69
Enrollment Management ,Facilities, Faculty Development, Faculty Senate, Financial Aid Appeals, Homecoming, International, Institutional Review Board	70
Judicial Council, Library Advisory , Promotion & Tenure, Retention, Scholarship, Staff Council, Student Government Association, Student Life	71
Default Management, Early Intervention Team, HLC Assurance Team, Media, Pioneer Showcase, Retention Study Team, Strategic Planning Team, Textbook Affordability	72

Fall reporting posted in October 2014 to
 IPEDS Integrated Postsecondary Education Data System
 HEPC West Virginia Higher Education Policy Commission

Fall Enrollment by Class

Class	2009	2010	2011	2012	2013	2014	2015
Freshman	569	708	682	680	573	566	489
Sophomore	180	247	264	225	220	247	252
Junior	161	157	226	199	185	183	156
Senior	323	331	308	334	287	256	260
Non-Degree ¹	488	385	377	460	585	550	575
Total Headcount	1721	1828	1857	1898	1850	1802	1732

Percentage of Fall Enrollment by Class

Class	2009	2010	2011	2012	2013	2014	2015
Freshman	33%	39%	37%	36%	31%	31%	28%
Sophomore	10%	13%	14%	12%	12%	14%	15%
Junior	9%	9%	12%	10%	10%	10%	9%
Senior	19%	18%	17%	18%	16%	14%	15%
Non-Degree ¹	28%	21%	20%	24%	31%	31%	28%
Total Headcount	1721	1828	1857	1898	1850	1802	1732

¹ Students not seeking a degree and high school early entrance students.

First-Time Freshmen

Term	Enrolled Full-Time	Male	Female	Enrolled Part-Time	Male	Female	Total Enrolled
Fall 2009	329	175	154	2	0	2	331
Fall 2010	313	172	141	103 ¹	93	10	416
Fall 2011	284	182	102	71	60	11	355
Fall 2012	339	224	115	61	55	6	400
Fall 2013	280	163	117	35	19	16	315
Fall 2014	264	148	116	80	66	14	344
Fall 2015	287	161	126	54	59	5	341

¹ New off-site associate degree programs at Federal Corrections Institution (FCI) Gilmer and for West Virginia Department of Military Affairs and Public Safety (DMAPS).

First-Time Freshmen - Baccalaureate Program

Term	Enrolled Full-Time	Male	Female	Enrolled Part-Time	Male	Female	Total Enrolled
Fall 2009	291	155	136	0	0	0	291
Fall 2010 ¹	149	85	77	1	0	1	150
Fall 2011	155	91	64	2	2	0	157
Fall 2012	169	112	57	1	0	1	170
Fall 2013	175	96	79	1	1	0	176
Fall 2014	195	107	88	5	1	4	200
Fall 2015	206	112	94	3	1	2	209

¹Adjusted ACT and SAT requirements limiting number of students admitted to a baccalaureate program.

First-Time Freshmen - Associate Program

Term	Enrolled Full-Time	Male	Female	Enrolled Part-Time	Male	Female	Total Enrolled
Fall 2009	38	20	18	2	0	2	40
Fall 2010 ¹	164	87	64	102	93	9	266
Fall 2011	129	91	38	69	58	11	198
Fall 2012	170	112	58	60	55	5	230
Fall 2013	105	67	38	34	18	16	139
Fall 2014	69	41	28	75	65	10	144
Fall 2015	81	49	32	47	45	2	128

¹ Adjusted ACT and SAT requirements limiting number of students admitted to a baccalaureate program.

New Transfers for Fall

Term	Enrolled Full-Time	Male	Female	Enrolled Part-Time	Male	Female	Total Enrolled
Fall 2009	78	50	28	5	2	3	83
Fall 2010	104	54	50	56 ¹	28	28	160
Fall 2011	101	60	41	51	29	22	152
Fall 2012	92	54	38	28	24	4	120
Fall 2013	58	36	22	97	55	42	155
Fall 2014	80	49	31	63	41	22	143
Fall 2015	70	45	25	32	29	3	102

¹West Virginia Department of Military Affairs and Public Safety (DMAPS) transfers into Associate Criminal Justice Program.

New Transfers - Baccalaureate Program

Term	Enrolled Full-Time	Male	Female	Enrolled Part-Time	Male	Female	Total Enrolled
Fall 2009	70	46	24	5	2	3	75
Fall 2010	70	38	32	4	2	2	74
Fall 2011	64	38	26	5	0	5	69
Fall 2012	64	37	27	3	1	2	67
Fall 2013	51	34	17	5	3	2	56
Fall 2014	66	42	24	7	5	2	73
Fall 2015	61	37	24	3	1	2	64

New Transfers - Associate Program

Term	Enrolled Full-Time	Male	Female	Enrolled Part-Time	Male	Female	Total Enrolled
Fall 2009	8	4	4	0	0	0	8
Fall 2010 ¹	34	16	18	52	26	26	86
Fall 2011	37	22	15	46	29	17	83
Fall 2012	28	17	11	25	23	2	53
Fall 2013	7	2	5	92	52	40	99
Fall 2014	14	7	7	56	36	20	70
Fall 2015	8	7	1	28	27	1	36

¹West Virginia Department of Military Affairs and Public Safety (DMAPS) transfers into Associate Criminal Justice Program.

Enrollment by Course Location

Location	Fall 2011		Fall 2012		Fall 2013		Fall 2014		Fall 2015	
	Headcount	FTE	Headcount	FTE	Headcount	FTE	Headcount	FTE	Headcount	FTE
Glenville Campus	1503	1186	1476	1176	1136	1051	1037	974	1217	1008
FCI Gilmer	196	69	183	64	107	58	139	69	138	56
New River ¹	11	5	13	6	10	4	12	3	0	0
Braxton Center	NA	NA	51	23	46	18	84	24	72	17
High Schools	152	42	200	86	236	75	251	71	307	71

Enrollment by Online Courses

Location	Fall 2011		Fall 2012		Fall 2013		Fall 2014		Fall 2015	
	Headcount	FTE	Headcount	FTE	Headcount	FTE	Headcount	FTE	Headcount	FTE
Glenville Campus	449	105	415	109	440	120	280	78	329	77
DMAPS ²	131	63	271	65	93	45	189	75	52	25
Total	580	168	686	174	533	165	469	153	381	102

¹ 2 + 2 Education Program.

² West Virginia Department of Military Affairs and Public Safety

Fall Enrollment Headcount Comparison

Institution Name	Fall 2009	Fall 2010	Fall 2011	Fall 2012	Fall 2013	Fall 2014	Fall 2015
Bluefield State College	2058	2101	1929	1935	1747	1563	1482
Concord University	2924	2919	2797	2834	2767	2545	2498
Fairmont State University	4572	4708	4617	4451	4232	4034	4025
Glenville State College	1721	1828	1857	1898	1850	1802	1732
Shepherd University	4370	4336	4393	4326	4221	4041	3904
West Liberty State College	2645	2738	2787	2804	2775	2693	2347
West Virginia State University	3971	3239	2827	2644	2677	2884	3221

Fall Enrollment FTE Comparison

Institution Name	Fall 2011	Fall 2012	Fall 2013	Fall 2014	Fall 2015
Bluefield State College	1660	1717	1556	1352	1302
Concord University	2723	2621	2539	2305	2260
Fairmont State University	4023	3939	3745	3565	3556
Glenville State College	1412	1445	1330	1279	1251
Shepherd University	3837	3774	3642	3458	3290
West Liberty State College	2656	2672	2662	2513	2232
West Virginia State University	2259	2108	2158	2229	2301

Applicants Accepted and Enrolled All Students

Term	Applicants	Male	Female	Number Accepted	Enrolled Full-Time	Male	Female	Enrolled Part-Time	Male	Female	Total Enrolled
Fall 2009	1165	584	581	1092	446	246	200	11	3	8	457
Fall 2010	1347	696	651	1094	457	247	210	174	130	44	631
Fall 2011	1588	877	711	1345	425	256	169	130	92	38	555
Fall 2012	1568	888	680	1354	472	297	175	116	94	22	588
Fall 2013	1443	725	718	1140	330	197	133	131	73	58	461
Fall 2014	1640	833	807	717 ¹	366	210	156	166	114	52	532
Fall 2015	1670	853	817	1201	375	215	160	98	80	18	473

Applicants Accepted and Enrolled Conversion Percentages

Term	Accepted to Applicants	Full-Time to Accepted	Part-Time to Accepted	Enrollment to Accepted
Fall 2009	94%	41%	1%	42%
Fall 2010	81%	42%	16%	58%
Fall 2011	85%	31%	10%	41%
Fall 2012	86%	35%	8%	43%
Fall 2013	79%	29%	11%	40%
Fall 2014 ¹	44%	51%	23%	74%
Fall 2015	72%	31%	8%	39%

¹ Applicants with incomplete applications not accepted.

Applicants Accepted and Enrolled First-Time Freshmen

Term	Applicants	Male	Female	Number Accepted	Enrolled Full-Time	Male	Female	Enrolled Part-Time	Male	Female	Total Enrolled
Fall 2009	928	463	465	855	329	175	154	2	0	2	331
Fall 2010	1025	529	496	796	313	172	141	103	93	10	416
Fall 2011	1246	690	556	1023	284	182	102	71	60	11	355
Fall 2012	1218	696	522	1024	339	224	115	61	55	6	400
Fall 2013	1198	586	612	892	280	163	117	35	19	16	315
Fall 2014 ¹	1292	644	648	602 ¹	264	148	116	80	66	14	344
Fall 2015	1430	712	718	1036	287	161	126	54	49	5	341

Applicants Accepted and Enrolled Conversion Percentages First-Time Freshmen

Term	Accepted to Applicants	Full-Time to Accepted	Part-Time to Accepted	Enrollment to Accepted
Fall 2009	92%	38%	0%	39%
Fall 2010	78%	39%	13%	52%
Fall 2011	82%	28%	7%	35%
Fall 2012	84%	33%	6%	39%
Fall 2013	74%	31%	4%	35%
Fall 2014 ¹	47%	44%	13%	57%
Fall 2015	72%	28%	5%	33%

¹ Applicants with incomplete applications not accepted.

Applicants Accepted and Enrolled New Transfer Students

Term	Applicants	Male	Female	Number Accepted	Enrolled Full-Time	Male	Female	Enrolled Part-Time	Male	Female	Total Enrolled
Fall 2009	167	87	80	167	78	50	28	5	2	3	83
Fall 2010	229	123	106	205	104	54	50	56 ¹	28	28	160 ¹
Fall 2011	255	147	108	236	101	60	41	51	29	22	152
Fall 2012	247	140	107	227	92	54	38	28	24	4	120
Fall 2013	240	135	105	224	58	36	22	97	55	42	155
Fall 2014 ²	264	151	113	147 ²	80	49	31	63	41	22	143
Fall 2015	208	130	78	133	70	45	25	32	29	3	102

Applicants Accepted and Enrolled Conversion Percentages New Transfer Students

Term	Accepted to Applicants	Full-Time to Accepted	Part-Time to Accepted	Enrollment to Accepted
Fall 2009	100%	47%	3%	50%
Fall 2010	89%	51%	27%	78%
Fall 2011	93%	43%	22%	67%
Fall 2012	92%	41%	12%	53%
Fall 2013	93%	26%	43%	69%
Fall 2014 ²	56%	54%	43%	97%
Fall 2015	64%	52%	24%	77%

¹ Significant Fall 2010 increases reflects enrollment in new degree offerings and enrollment growth at Federal Corrections Institution (FCI) Gilmer and West Virginia Department of Military Affairs and Public Safety (DMAPS).

² Applicants with incomplete applications not accepted.

Applicants Accepted and Enrolled Re-Admit Students

Term	Applicants	Male	Female	Number Accepted	Enrolled Full-Time	Male	Female	Enrolled Part-Time	Male	Female	Total Enrolled
Fall 2009	70	34	36	70	39	21	18	4	1	3	43
Fall 2010	93	44	49	93	40	21	19	15	9	6	55
Fall 2011	87	40	47	86	40	14	26	8	3	5	48
Fall 2012	103	52	51	103	41	19	22	27	15	12	68
Fall 2013	79	39	40	75	19	8	11	32	19	13	51
Fall 2014 ¹	74	33	41	48	22	13	9	23	7	16	45
Fall 2015	32	11	21	32	18	9	9	14	2	12	32

¹ Applicants with incomplete applications not accepted.

Spring Enrollment by Class

Class	2009	2010	2011	2012	2013	2014	2015
Freshman	471	578	611	544	518	468	349
Sophomore	221	219	264	273	253	257	306
Junior	173	178	213	222	200	189	195
Senior	334	344	338	364	344	314	284
Non-Degree	108	190	160	155	245	186	251
Total Headcount	1307	1509	1586	1558	1560	1414	1388

FTE by Spring Semesters

Term	2009	2010	2011	2012	2013	2014	2015
Spring	1163	1294	1340	1271	1245	1121	1127

New First-Time Freshmen for Spring

Term	Enrolled Full-Time	Male	Female	Enrolled Part-Time	Male	Female	Total Enrolled
Spring 2010	33	18	15	3	1	2	36
Spring 2011	41	26	15	29	26	3	70
Spring 2012	22	11	11	49	39	10	71
Spring 2013	30	16	14	5	1	4	35
Spring 2014	24	19	5	41	39	2	65
Spring 2015	25	20	5	5	3	2	30

New First-Time Freshmen for Spring - Baccalaureate Program

Term	Enrolled Full-Time	Male	Female	Enrolled Part-Time	Male	Female	Total Enrolled
Spring 2010	21	11	10	0	0	0	21
Spring 2011	13	7	6	12	10	2	25
Spring 2012	6	2	4	0	0	0	6
Spring 2013	14	7	7	1	0	1	15
Spring 2014	15	11	4	1	1	0	16
Spring 2015	13	10	3	0	0	0	13

New First-Time Freshmen for Spring – Associate Program

Term	Enrolled Full-Time	Male	Female	Enrolled Part-Time	Male	Female	Total Enrolled
Spring 2010	12	7	5	2	0	2	14
Spring 2011	28	19	9	17	16	1	45
Spring 2012	16	9	7	49	39	10	65
Spring 2013	16	9	7	4	1	3	20
Spring 2014	9	8	1	40	38	2	49
Spring 2015	12	10	2	4	3	1	16

New Transfers for Spring

Term	Enrolled Full-Time	Male	Female	Enrolled Part-Time	Male	Female	Total Enrolled
Spring 2010	32	24	8	1	1	0	33
Spring 2011	61	37	24	26	17	9	87
Spring 2012	39	24	15	30	26	4	69
Spring 2013	46	17	29	8	3	5	54
Spring 2014	35	16	19	21	15	6	56
Spring 2015	25	16	9	10	5	5	35

New Transfers for Spring - Baccalaureate Program

Term	Enrolled Full-Time	Male	Female	Enrolled Part-Time	Male	Female	Total Enrolled
Spring 2010	26	22	4	1	1	0	27
Spring 2011	40	20	20	16	8	8	56
Spring 2012	14	7	7	2	0	2	16
Spring 2013	35	15	20	3	0	3	38
Spring 2014	27	13	14	2	0	2	29
Spring 2015	19	13	6	1	0	1	20

New Transfers for Spring - Associate Program

Term	Enrolled Full-Time	Male	Female	Enrolled Part-Time	Male	Female	Total Enrolled
Spring 2010	6	2	4	0	0	0	6
Spring 2011	21	17	4	10	9	1	31
Spring 2012	25	17	8	23	22	1	48
Spring 2013	11	2	9	5	3	2	16
Spring 2014	8	3	5	19	15	4	27
Spring 2015	6	3	3	9	5	4	15

Summer Enrollment by Class

Class	2009	2010	2011	2012	2013	2014	2015
Freshman	161	201	188	162	34	59	49
Sophomore	72	115	113	107	61	61	94
Junior	60	58	82	65	55	46	53
Senior	115	125	146	142	94	82	81
Non-Degree	0	43	18	80	32	109	74
Headcount Total	422	542	547	556	276	357	351

FTE by Summer Semesters

Term	2009	2010	2011	2012	2013	2014	2015
Summer	138	192	208	182	80	85	97

Retention of First-Time, Full-Time Students
Fall to Fall

	2009 to 2010	2010 to 2011	2011 to 2012	2012 to 2013	2013 to 2014	2014 to 2015
Bachelor's	58%	70% ¹	65%	63%	65%	62%
Associate's	55%	48%	36%	47%	48%	42%
Total	58%	59%	52%	55%	59%	56%

Retention of All Students
Fall to Fall

	2009 to 2010	2010 to 2011	2011 to 2012	2012 to 2013	2013 to 2014	2014 to 2015
Degree Seeking	64%	50%	49%	49%	51%	52%
Degree and Non-Degree Seeking	53%	53%	48%	46%	44%	45%

¹Reflects new admissions standards.

Full-Time Students - Baccalaureate Retention
Fall to Fall

	2009 - 2010	2010 - 2011	2011 - 2012	2012 - 2013	2013 - 2014	2014 - 2015
First-Time Freshmen	58%	70% ¹	65%	63%	65%	62%
All Freshmen	66%	68%	66%	62%	62%	65%
Sophomore	79%	82%	76%	76%	81%	86%
Junior	78%	84%	81%	81%	74%	82%

Full-Time Students - Associate Retention
Fall to Fall

	2009 - 2010	2010 - 2011	2011 - 2012	2012 - 2013	2013 - 2014	2014 - 2015
First-Time Freshmen	55%	47%	36%	47%	48%	42%
All Freshmen	62%	46%	44%	50%	50%	50%
Sophomore	78%	69%	61%	61%	63%	57%

¹Increased criteria – based associate degree placement.

Retention of First-Time, Full-Time Students
Fall to Spring

	2009 to 2010	2010 to 2011	2011 to 2012	2012 to 2013	2013 to 2014	2014 to 2015
Bachelor's	83%	87%	83%	86%	84%	85%
Associate's	84%	75%	77%	75%	74%	74%
Total	83%	81%	80%	80%	79%	82%

Retention of All Students
Fall to Spring

	2009 to 2010	2010 to 2011	2011 to 2012	2012 to 2013	2013 to 2014	2014 to 2015
Degree Seeking	81%	75%	78%	79%	72%	68%
Degree and Non-Degree Seeking	53%	53%	68%	68%	59%	63%

Full-Time Students - Baccalaureate Retention
Fall to Spring

	2009 - 2010	2010 - 2011	2011 - 2012	2012 - 2013	2013 - 2014	2014 - 2015
First-Time Freshmen	83%	87%	83%	86%	84%	85%
All Freshmen	83%	83%	83%	84%	82%	84%
Sophomore	85%	90%	92%	88%	90%	95%
Junior	93%	90%	91%	92%	90%	96%

Full-Time Students - Associate Retention
Fall to Spring

	2009 - 2010	2010 - 2011	2011 - 2012	2012 - 2013	2013 - 2014	2014 - 2015
First-Time Freshmen	84%	75%	77%	75%	76%	74%
All Freshmen	85%	73%	74%	75%	70%	73%
Sophomore	100%	95%	77%	82%	83%	89%

Retention of First-Time, Full-Time Students – Spring Admits
Spring to Fall

	2009 - 2009	2010 - 2010	2011 - 2011	2012 - 2012	2013 - 2013	2014 - 2014	2015 – 2015
Bachelor's	59%	57%	54%	67%	36%	60%	66%
Associate's	50%	33%	57%	56%	69%	33%	66%
Total	57%	48%	56%	59%	53%	50%	66%

Retention of All Students
Spring to Fall

	2009 - 2009	2010 - 2010	2011 - 2011	2012 - 2012	2013 -2013	2014 - 2014	2015 – 2015
Degree Seeking	63%	69%	67%	64%	61%	65%	66%
Degree and Non-Degree Seeking	63%	65%	65%	60%	58%	59%	56%

Full-Time Students - Baccalaureate Retention
Spring to Fall

	2009 - 2009	2010 - 2010	2011 - 2011	2012 - 2012	2013 - 2013	2014 - 2014	2015 – 2015
All Freshmen	65%	69%	72%	69%	66%	71%	71%
Sophomore	77%	90%	88%	90%	84%	84%	87%
Junior	77%	85%	93%	79%	89%	85%	88%

Full-Time Students - Associate Retention
Spring to Fall

	2009 - 2009	2010 - 2010	2011 - 2011	2012 - 2012	2013 - 2013	2014 - 2014	2015 – 2015
All Freshmen	44%	61%	55%	52%	62%	56%	61%
Sophomore	55%	58%	70%	76%	78%	79%	59%

Six-Year Graduation Rates

Started and Completed at Same Institution

	First-Time, Full-Time Students (Entering Year)						
	2003	2004	2005	2006	2007	2008	2009
Glenville State College Baccalaureate	33%	28%	30%	31%	29%	28%	29%
All WV State Colleges Baccalaureate Avg.	46%	45%	45%	45%	44%	44%	45%

Five-Year Graduation Rates

Started and Completed at Same Institution

	First-Time, Full-Time Students (Entering Year)						
	2004	2005	2006	2007	2008	2009	2010
Glenville State College	25%	24%	26%	25%	23%	26%	39%

Four-Year Graduation Rates

Started and Completed at Same Institution

	First-Time, Full-Time Students (Entering Year)						
	2005	2006	2007	2008	2009	2010	2011
Glenville State College	16%	18%	13%	11%	16%	22%	24%

Six-Year Graduation Rates
Baccalaureate Students Receiving Athletic-Related Financial Aid (Entering Year)

Entering Year	First-Time Full-Time Freshmen	Certificate or Associates Received	Bachelors Received	Percentage
Fall 1999	51	0	18	35.3%
Fall 2000	43	0	18	41.9%
Fall 2001	45	0	18	40.0%
Fall 2002	41	0	19	46.3%
Fall 2003	37	1	10	29.7%
Fall 2004	47	1	19	42.6%
Fall 2005	65	0	19	29.0%
Fall 2006	68	0	23	33.8%
Fall 2007	35	0	14	41.0%
Fall 2008	69	0	30	43.0%

Full-Time Enrollment by Degree Program

Term		Total
Fall 2009		1156
	<i>Associate</i>	71
	<i>Baccalaureate</i>	1070
	<i>Non-Degree</i>	15
Fall 2010 ¹		1277
	<i>Associate</i>	324
	<i>Baccalaureate</i>	938
	<i>Non-Degree</i>	15
Fall 2011		1188
	<i>Associate</i>	290
	<i>Baccalaureate</i>	897
	<i>Non-Degree</i>	1
Fall 2012		1232
	<i>Associate</i>	331
	<i>Baccalaureate</i>	859
	<i>Non-Degree</i>	42
Fall 2013		1114
	<i>Associate</i>	265
	<i>Baccalaureate</i>	828
	<i>Non-Degree</i>	21
Fall 2014		1038
	<i>Associate</i>	201
	<i>Baccalaureate</i>	827
	<i>Non-Degree</i>	10
Fall 2015		1044
	<i>Associate</i>	162
	<i>Baccalaureate</i>	879
	<i>Non-Degree</i>	3

¹ Students with low test scores & GPA or deficient HS course work assigned to associate program.

Part-Time Enrollment by Degree Program

Term		Total
Fall 2009		565
	<i>Associate</i>	3
	<i>Baccalaureate</i>	47
	<i>Non-Degree</i>	515
Fall 2010 ¹		551
	<i>Associate</i>	330
	<i>Baccalaureate</i>	47
	<i>Non-Degree</i>	174
Fall 2011		669
	<i>Associate</i>	307
	<i>Baccalaureate</i>	55
	<i>Non-Degree</i> ²	307
Fall 2012		666
	<i>Associate</i>	271
	<i>Baccalaureate</i>	50
	<i>Non-Degree</i>	345
Fall 2013		736
	<i>Associate</i>	311
	<i>Baccalaureate</i>	53
	<i>Non-Degree</i>	372
Fall 2014		764
	<i>Associate</i>	289
	<i>Baccalaureate</i>	61
	<i>Non-Degree</i>	414
Fall 2015		688
	<i>Associate</i>	148
	<i>Baccalaureate</i>	54
	<i>Non-Degree</i>	486

¹ Adjusted ACT and SAT requirements limiting number of students admitted to a baccalaureate program.

² Includes more DMAPS students.

Enrollment by Academic Program

Program	Fall 2008	Fall 2009	Fall 2010	Fall 2011	Fall 2012	Fall 2013	Fall 2014	Fall 2015
Art (BA) (Start 2012)	NA	NA	NA	NA	5	13	9	0
Graphics & Digital Media	NA	NA	NA	NA	NA	NA	7	15
Studio Art	NA	NA	NA	NA	NA	NA	1	4
Total	NA	NA	NA	NA	5	13	17	19
Behavioral Sciences								
Behavioral Science (BSBS) (end 2001 as major)	1	NA	NA	NA	NA	NA	NA	NA
Basic & Applied Psychology (end 2001)	2	1	NA	NA	NA	NA	NA	NA
Criminal Justice (BSBS)	97	59	36	14	10	1	0	0
Psychology/Sociology	85	76	82	94	93	96	91	69
Total	185	136	118	108	103	97	91	69
Biology (BS)	50	43	55	51	41	33	41	37
Business Administration								
Accounting (BSBA)	45	27	19	25	34	33	28	26
Computer Science/Information Systems (BSBA)	18	14	15	23	24	27	25	30
Management (BSBA)	87	71	66	64	42	50	49	47
Marketing (BSBA)	21	19	23	20	14	10	13	13
Resort Area Management (BSBA)(start 2005)	0	4	5	4	4	6	8	5
Sport Management (BS) (start 2005)	44	52	57	49	65	71	60	49
Total	215	187	185	185	183	197	183	170
Business Management (BS) (2+2 Program)	0	4	5	5	2	0	0	1
Chemistry (BA)	13	15	18	8	6	6	8	16

Enrollment by Academic Program (continued)

Program	Fall 2008	Fall 2009	Fall 2010	Fall 2011	Fall 2012	Fall 2013	Fall 2014	Fall 2015
Criminal Justice (BS) (Start 2009)	NA	41	53	77	85	95	117	153
Education								
Biological Science (9-adult) (BAED)	7	5	2	6	6	3	4	4
Business Ed Comprehensive (5-adult) (BAED)	6	5	5	7	7	4	2	1
Chemistry (9-adult) (BAED)	13	1	1	4	2	1	0	0
Chemistry & Physics (9-adult) (BAED)	0	1	2	2	3	3	3	2
Early Education (PreK-K) (BAED)	85	88	102	76	19 ¹	1	1	1
Elementary Education (K-6) (BAED)	41	8	7	7	85 ¹	102	93	90
English (5-9) (BAED)	8	13	16	6	1	0	0	0
English (5-adult) (BAED)	25	20	24	22	14	16	17	21
General Science (5-9) (BAED)	1	3	3	3	0	0	0	0
General Science (5-adult) (BAED)	1	4	5	5	3	1	1	1
Health (5-adult) (end 2010)	0	2	3	2	2	NA	NA	NA
Health/Physical Education (PreK-adult)(start 2008)	NA	12	24	33	25	22	13	10
Math (5-9) (General Math/Algebra) (BAED)	11	10	11	7	1	1	1	2
Math (5-adult) (BAED)	10	11	13	10	13	12	18	16
Multi-Categorical (K-6) (start 2006)	0	25	20	22	7	0	0	0
Multi-Categorical (Special Ed) (K-adult)(end 2006)	29	3	1	1	0	0	0	0
Music (non-specified) (BAED)(PreK-adult)	45	33	35	34	34	28	32	39
Physical Education (PreK-adult) (BAED)	54	51	26	13	4	1	0	0
Social Studies (5-adult) (BAED)	33	31	31	30	33	27	27	21
Social Studies (5-9) (BAED)	7	13	9	7	1	1	1	0
Spanish (5-adult) (BAED)(start 2008)	0	1	3	4	1	2	1	1
Total	376	340	343	301	261	225	214	209
English (BA)								
	19	17	16	22	16	14	14	9

Enrollment by Academic Program (continued)

Program	Fall 2008	Fall 2009	Fall 2010	Fall 2011	Fall 2012	Fall 2013	Fall 2014	Fall 2015
Health & Human Performance BS (Start Fall 2014)								
Athletic Conditioning/Coaching	NA	NA	NA	NA	NA	NA	1	15
Exercise Science	NA	NA	NA	NA	NA	NA	7	40
Health Promotions	NA	NA	NA	NA	NA	NA	0	1
Nursing (2 year collab. WVU/Tech End Fall 2011)	47	24	34	0	0	0	0	0
Pre-Nursing (1 year intro/collab.Fall 2011)	NA	NA	NA	27	26	18	14	12
Total	NA	NA	NA	NA	NA	NA	8	68
History (BA) (renamed 2009)	18	19	12	6	2	0	0	0
History & Political Science (BA)(new code 2009)	NA	NA	4	6	12	14	12	18
Interdisciplinary Studies (BA/BS)	1	0	0	1	1	1	1	0
Music (BA) (new 2007)	0	9	12	16	14	18	22	18
Natural Resource Management (BS)	106	97	110	111	114	123	127	124
Regents Bachelor of Arts (BORBA)	9	12	10	18	21	13	12	14
Undeclared	61	51	9 ¹	10	18	14	7	8

Enrollment by Academic Program (continued)

Associate Programs								
Criminal Justice (AS)	9	13	193 ²	146	132	251	203	52
Forest Technology (AS)	13	8	13	12	14	16	12	15
General Business (AA)	27	18	227 ²	247	226	158	181	158
General Studies (AA)	21	143	206	176	210	139	82	71
Land Surveying (AS)	14	13	15	16	19	10	12	13
Total	84	195	654	597	601	574	490	309
Non-Degree Seeking								
Total Headcount	263	541	190 ²	308	387	395	424	490
Total Headcount	1443	1721	1828	1857	1898	1850	1802	1732

¹ Classification changed to work better during the evaluation process for Degree Works.

² FCI (AA Business) and DMAP (AS Criminal Justice) students entered as degree seeking.

Graduation by Academic Programs

Program	2008-09	2009-10	2010-11	2011-12	2012-13	2013-14	2014-15
Art (BS)	NA	NA	NA	NA	NA	2	3
Behavioral Science (BS)	1	0	0	0	1	0	0
Psychology/Sociology	19	14	16	18	24	29	17
Criminal Justice	17	13	13	9	3	1	0
Basic & Applied Psychology (<i>discontinued</i>)	3	2	0	0	0	0	0
Total	40	29	29	27	28	30	17
Biology (BS)	8	6	3	4	5	2	2
Business Administration (BSBA)							
Accounting (BSBA)	16	2	6	4	4	6	5
General Business (BSBA)	0	0	0	0	0	0	0
Computer and Information Systems (BSBA)	2	3	2	0	6	1	5
Management (BSBA)	13	8	11	13	7	12	7
Marketing (BSBA)	1	2	4	1	5	0	0
Resort Area Management	0	0	0	1	0	0	0
Sport Management (BA) (<i>discontinued 2001</i>)	3	1	4	0	0	0	0
Sport Management (BS) (<i>start 2005</i>)	0	0	0	6	9	5	6
Total	35	16	27	27	31	24	23
Business Mgmt (BS) (2+2 Program ended)	0	0	0	2	0	0	0
Chemistry (BA)	5	0	4	1	2	4	1
Criminal Justice (BS) (Start Aug 2009)	NA	1	1	0	18	19	16
Education							
Biological Science (9-Adult)	0	1	0	1	1	0	1
Business Ed Comprehensive (5-Adult) (BAED)	0	2	2	0	1	1	1
Chemistry (9-12) (BAED)	0	0	0	0	0	0	0
Early Education (PreK-K) (BAED)	10	11	23	18	6	0	0

Graduation by Academic Programs (continued)

Program	2008-09	2009-10	2010-11	2011-12	2012-13	2013-14	2014-15
Education (continued)							
Elementary Education (BAED)	0	1	1	0	9	24	14
English (5-Adult) (BAED)	5	0	4	2	3	5	1
English (5-9) (BAED)	4	2	4	1	0	0	0
Chemistry & Physics (9-Adult)	0	0	0	0	0	1	0
General Science (5-Adult) (BAED)	0	0	0	1	2	0	0
General Science (5-9) (BAED)	1	0	1	0	0	0	0
Health/Physical Education (PreK-Adult)(BAED)	NA	NA	0	1	4	4	1
Math (5-Adult) (BAED)	2	2	3	1	1	0	0
Math (5-9) (BAED)	2	3	2	1	1	1	0
Multi-Categorical (K-Adult) (BAED)(End 2006)	6	5	0	0	0	0	0
Multi-Categorical (K-6) (BAED)	0	1	4	2	1	0	0
Music (PreK-Adult) (BAED)	2	1	4	5	5	5	7
Physical Education (PreK-Adult) (BAED)	6	4	2	4	0	0	0
Social Studies (5-Adult) (BAED)	4	3	7	1	3	4	4
Social Studies (5-9) (BAED)	0	1	1	0	2	0	0
Spanish Education (BAED)(Start 2009)	NA	0	0	1	0	0	0
Total	42	37	58	39	39	45	29
English (BA)	1	1	3	3	2	8	3
History (BA)	7	3	2	2	0	0	0
History Political Science (<i>new major code</i>)	0	1	1	1	1	5	1
Interdisciplinary Studies (BA/BS)	1	1	0	1	2	3	1
Music	1	3	1	5	2	3	4
Natural Resource Management (BS)	28	15	16	19	24	16	22
Regents Bachelor of Arts (BORBA)	16	20	16	22	20	15	14

Graduation by Academic Programs (continued)

Program	2008-09	2009-10	2010-11	2011-12	2012-13	2013-14	2014-15
Associate Degrees							
General Business	12	8	18	27	7	12	16
Criminal Justice (AS)	1	2	0	12	10	11	22
Forest Technology (AS)	12	7	9	12	8	11	3
General Studies (AA)	3	2	1	3	1	5	6
Land Surveying (AS)	7	10	8	4	5	8	8
Total	35	29	36	58	31	47	55
Grand Total	219	161	197	209	205	223	191

Degrees Conferred

Degree Type	2008-09	2009-10	2010-11	2011-12	2012-13	2013-14	2014-15
Associate Degree	31	29	36	58	31	47	55
Baccalaureate Degree	179	132	161	151	174	176	136
Total	210	161	197	209	205	223	191

Student Profile

Fall 2009 – Fall 2015

	Fall 2009		Fall 2010		Fall 2011		Fall 2012		Fall 2013		Fall 2014		Fall 2015	
	Number	Percent	Number	Percent	Number	Percent	Number	Percent	Number	Percent	Number	Percent	Number	Percent
Students Total	1721	100%	1828	100%	1857	100%	1898	100%	1850	100%	1802	100%	1732	100%
Gender														
Male	978	57%	1010	55%	1078	58%	1117	59%	1055	57%	1043	58%	956	55%
Female	743	43%	818	45%	779	42%	781	41%	795	43%	759	42%	776	45%
Residence														
WV Resident	1547	90%	1624	89%	1630	88%	1607	85%	1582	86%	1560	87%	1471	85%
Non-Resident	174	10%	204	11%	227	12%	291	15%	268	14%	242	13%	260	15%
Attendance Status														
Full-Time	1156	67%	1277	70%	1188	64%	1232	65%	1114	60%	1038	58%	1044	60%
Part-Time	565	33%	551	30%	667	36%	666	35%	736	40%	764	42%	688	40%
Ethnicity														
White	1424	83%	1508	82%	1452	78%	1484	78%	1522	82%	1376	76%	1281	74%
African-Amer.	249	14%	274	15%	302	16%	323	17%	250	14%	234	13%	258	15%
Other*	48	3%	46	3%	103	6%	91	5%	72	4%	192	11%	193	11%
Age														
Under 25	1186	69%	1239	68%	1224	66%	1229	64%	1212	66%	1196	66%	1341	78%
25-29	174	10%	148	8%	181	10%	209	11%	164	9%	189	11%	111	6%
30-39	223	13%	266	14%	263	14%	258	14%	230	12%	215	12%	157	9%
40+	126	7%	157	9%	189	10%	202	11%	243	13%	202	11%	123	7%
Unknown	12	1%	18	1%							0	0	0	0

Enrollment by Gender – All Students

Term	Total Enrollment	Males	Females	Percentage Male	Percentage Female
Fall 2009	1721	978	743	57%	43%
Fall 2010	1828	1010	818	55%	45%
Fall 2011	1857	1078	779	58%	42%
Fall 2012	1898	1117	781	59%	41%
Fall 2013	1850	1055	795	57%	43%
Fall 2014	1802	1043	759	58%	42%
Fall 2015	1732	956	776	55%	45%

Enrollment by Gender – Excluding FCI & DMAPS

Term	Total Enrollment	Males	Females	Percentage Male	Percentage Female
Fall 2009	1351	679	672	50%	50%
Fall 2010	1449	718	731	50%	50%
Fall 2011	1413	733	680	52%	48%
Fall 2012	1455	771	684	53%	47%
Fall 2013	1389	718	671	52%	48%
Fall 2014	1304	668	636	51%	49%
Fall 2015	1376	677	699	49%	51%

Enrollment By State of Residence

Fall

Home of Residence	2009	2010	2011	2012	2013	2014	2015
Alabama	2	1	1	3	2	4	2
California	7	11	6	12	20	18	19
District of Columbia	8	14	30	41	33	20	22
Florida	15	20	13	15	10	16	21
Georgia	6	4	8	6	3	3	2
Illinois	2	8	6	9	5	4	3
Kentucky	1	3	1	6	5	1	3
Maryland	18	28	38	30	30	36	46
Michigan	5	4	5	3	2	1	6
North Carolina	1	4	5	3	6	2	3
New York	8	5	12	11	10	3	3
Ohio	30	36	50	47	49	23	32
Pennsylvania	5	4	2	6	5	7	10
Texas	2	2	3	2	0	2	2
Virginia	42	46	57	76	65	46	63
West Virginia	1547	1624	1601	1607	1582	1560	1471
All Other States	20	12	14	16	20	54	22
Foreign Countries	2	2	5	5	3	2	1
Total	1721	1828	1857	1898	1850	1802	1731

Enrollment by Ethnicity

Term	White Non-Hispanic	Black Non-Hispanic	Hispanic	Asian or Pacific Islander	American Indian or Alaskan Native	Non-Resident Aliens	Two or more	Minority	Unknown
Fall 2009	1424	249	21	4	7	0	0	16%	16
Fall 2010	1508	274	26	6	10	0	0	17%	4
Fall 2011	1452	302	33	6	15	0	1	19%	48
Fall 2012	1480	323	32	4	13	11	0	20%	35
Fall 2013	1520	247	23	9	7	7	1	16%	36
Fall 2014	1375	232	24	3	0	6	17	16%	145
Fall 2015	1281	258	32	9	0	5	16	18%	131

Percentage of Enrollment by Ethnicity

Term	White Non-Hispanic	Black Non-Hispanic	Hispanic	Asian or Pacific Islander	American Indian or Alaskan Native	Non-Resident Aliens	Two or more	% Minority	Unknown
Fall 2009	83%	14%	1%	.2%	.4%	0%	.9%	16%	.9%
Fall 2010	82%	15%	1%	.3%	.5%	0%	.2%	17%	.2%
Fall 2011	78%	16%	2%	.3%	.8%	0%	3%	19%	2.6%
Fall 2012	78%	17%	2%	.2%	.7%	.6%	2%	20%	1.8%
Fall 2013	82%	13%	1%	.5%	.4%	.4%	2%	16%	1.9%
Fall 2014	76%	13%	1%	.2%	0%	.3%	.9%	16%	8%
Fall 2015	74%	15%	2%	.4%	0%	.2%	.9%	18%	8%

Average Age of All Students

Term	Age
Fall 2009 ¹	25
Fall 2010	25
Fall 2011	26
Fall 2012	26
Fall 2013	27
Fall 2014	26
Fall 2015	23

Students Age 25 and Older – All

Term	Undergraduate Enrollment	Undergraduates 25 Years or Older	Percent
Fall 2009 ¹	1721	523	30%
Fall 2010	1828	589	32%
Fall 2011	1857	633	34%
Fall 2012	1898	669	35%
Fall 2013	1850	637	34%
Fall 2014	1802	606	34%
Fall 2015	1732	391	23%

¹ Change is due to enrollment growth of FCI Gilmer and DMAPS students

Students Age 25 and Older - All Freshmen

Term	Total Freshmen	Freshmen 25 Years or Older	% of Total Freshmen
Fall 2009 ¹	569	96	17%
Fall 2010	708	239	34%
Fall 2011	682	236	35%
Fall 2012	680	221	33%
Fall 2013	573	155	27%
Fall 2014	566	144	25%
Fall 2015	489	88	18%

Students Age 25 and Older Full-Time

Term	Full-Time Enrollment	Full-Time Students 25 Years or Older	Percent of Full-Time Students 25 Years or Older
Fall 2009 ¹	1156	196	17%
Fall 2010	1277	264	21%
Fall 2011	1188	216	18%
Fall 2012	1232	250	20%
Fall 2013	1114	204	18%
Fall 2014	1038	176	17%
Fall 2015	1044	114	11%

Students Age 25 and Older Part-Time

Term	Part-Time Enrollment	Part-Time Students 25 Years or Older	Percent of Part-Time Students 25 Years or Older
Fall 2009 ¹	565	327	58%
Fall 2010	551	325	59%
Fall 2011	669	417	62%
Fall 2012	666	419	63%
Fall 2013	736	433	59%
Fall 2014	764	430	56%
Fall 2015	688	277	40%

¹ Change is due to the number of FCI Gilmer and DMAPS students enrolled.

ACT Scores and SAT Scores - Fall
First-Time/Full-Time

			State College
Term	ACT Average	SAT Average	System ACT Average
Fall 2009	19.1	852	20.7
Associate	18.0	800	
Baccalaureate	19.2	853	
Fall 2010	19.4	836	20.7
Associate	16.3	719	
Baccalaureate	21.6	949	
Fall 2011	19.0	800	20.6
Associate	16.7	745	
Baccalaureate	20.4	858	
Fall 2012	18.9	830	20.6
Associate	17	757	
Baccalaureate	20.5	914	
Fall 2013	18.6	847	20.6
Associate	16.7	733	
Baccalaureate	19.7	927	
Fall 2014	19.3	872	20.6
Associate	17.3	723	
Baccalaureate	19.9	908	
Fall 2015	19.6	853	20.8
Associate	17.8	745	
Baccalaureate	20.0	884	

ACT Scores and SAT Scores – Spring Admits First-Time/Full-Time

Term	ACT Average	SAT Average
Spring 2010	18.7	700
Associate	15.1	0 ¹
Baccalaureate	20.7	700
Spring 2011	18.3	1070
Associate	18	840
Baccalaureate	18.8	1300
Spring 2012	17	750
Associate	16.4	750
Baccalaureate	18.8	841
Spring 2013	18.8	841
Associate	16.0	770
Baccalaureate	20.5	870
Spring 2014	18.7	935
Associate	15	890
Baccalaureate	20	950
Spring 2015	16.4	835
Associate	15.6	875
Baccalaureate	17.3	815

¹ None Submitted

Grade Point Averages Semester¹

	2009-10		2010-11		2011-12		2012-13		2013-14		2014-15	
	Fall	Spring	Fall	Spring	Fall	Spring	Fall	Spring	Fall	Spring	Fall	Spring
All Students	2.39	2.42	2.29	2.33	2.45	2.70	2.42	2.23	2.16	2.21	2.28	2.55
All Freshmen	2.21	2.20	2.27	2.04	2.28	2.16	2.11	1.89	2.05	1.85	2.19	2.37
First-Time Full-Time Freshmen	2.47	1.96	2.49	2.41	2.41	2.72	2.24	2.94	2.61	2.48	2.68	2.06

Grade Point Averages Cumulative²

	2009-10		2010-11		2011-12		2012-13		2013-14		2014-15	
	Fall	Spring	Fall	Spring	Fall	Spring	Fall	Spring	Fall	Spring	Fall	Spring
All Students	2.56	2.62	2.55	2.61	2.69	2.86	2.38	2.46	2.31	2.45	2.40	2.66
All Freshmen	2.42	2.47	2.53	2.44	2.58	2.46	2.27	2.25	2.17	2.14	2.31	2.56
First-Time Full-Time Freshmen	2.51	2.00	2.49	2.47	2.44	2.76	2.43	2.87	2.61	2.48	2.72	2.08

¹ Semester GPA shows work completed for the semester.

² Cumulative GPA includes the total of all dual credit, transfer, and GSC work.

Enrollment in One or More Developmental Courses – Fall
First-Time/Full-Time

Term	Freshmen	Developmental Courses	Percent in Developmental Courses
Fall 2009	329	214	65%
Fall 2010	313	189	60%
Fall 2011	284	179	63%
Fall 2012	339	208	61%
Fall 2013	280	190	68%
Fall 2014	264	163	62%
Fall 2015	287	105	37%

Enrollment in One or More Developmental Courses – Spring Admits
First-Time/Full-Time

Term	Freshmen	Developmental Courses	Percent in Developmental Courses
Spring 2009	30	24	80%
Spring 2010	33	26	78%
Spring 2011	41	37	90%
Spring 2012	22	16	73%
Spring 2013	27	20	74%
Spring 2014	24	15	63%
Spring 2015	25	18	72%

West Virginia County Enrollment – Top 25

Fall 2015 with historical figures

County	2009	2010	2011	2012	2013	2014	2015
Gilmer	237	284	219	196	168	153	153
Gilmer (FCI)	191	181	188	175	103	139	135
Braxton	165	195	167	180	140	155	128
Nicholas	83	90	66	91	112	90	77
Lewis	72	73	70	72	80	84	75
Webster	27	28	23	24	28	62	75
Raleigh	39	39	30	50	32	50	57
Kanawha	44	52	51	52	68	48	47
Ritchie	44	43	80	71	107	82	46
Calhoun	105	99	86	61	83	46	44
Clay	33	38	35	72	52	42	43
Randolph	44	48	47	50	58	50	39
Wyoming	7	10	8	5	6	11	36
Roane	56	54	56	52	51	31	26
Wood	38	44	46	37	39	23	26
Fayette	26	25	28	27	39	50	24
Harrison	33	32	44	37	52	36	24
Boone	4	3	9	7	9	12	23
Ohio	6	2	4	3	4	2	22
Grant	5	3	3	2	3	7	21
Berkeley	30	21	27	21	31	35	20
Pocahontas	16	8	10	18	20	19	20
Marion	4	7	11	10	12	7	17
Greenbrier	14	13	14	10	14	14	16
Jackson	15	21	20	23	21	18	15
Upshur	23	29	34	33	25	16	15

West Virginia County Enrollment - All

County	2009	2010	2011	2012	2013	2014	2015
Barbour	9	9	9	12	15	16	8
Berkeley	30	21	27	21	31	35	20
Boone	4	3	9	7	9	12	23
Braxton	165	195	167	180	140	155	128
Brooke	2	1	1	4	2	3	11
Cabell	16	12	11	13	17	14	10
Calhoun	105	99	86	61	83	46	44
Clay	33	38	35	72	52	42	43
Doddridge	10	16	14	11	10	16	12
Fayette	26	25	28	27	39	50	24
Gilmer	237	284	219	196	168	153	153
Gilmer (FCI)	191	181	188	175	103	139	135
Grant	5	3	3	2	3	7	21
Greenbrier	14	13	14	10	14	14	16
Hampshire	11	6	6	8	1	6	9
Hancock	3	3	4	3	2	2	3
Hardy	3	2	1	5	2	2	1
Harrison	33	32	44	37	52	36	24
Jackson	15	21	20	23	21	18	15
Jefferson	3	7	7	7	6	13	8
Kanawha	44	52	51	52	68	48	47
Lewis	72	73	70	72	80	84	75
Lincoln	4	4	10	7	3	5	10
Logan	3	7	5	7	8	16	14
Marion	4	7	11	10	12	7	17
Marshall	8	6	10	11	7	8	14
Mason	10	5	17	16	14	17	5
McDowell	4	2	10	6	9	12	10

West Virginia County Enrollment (continued)

County	2009	2010	2011	2012	2013	2014	2015
Mercer	6	7	8	9	7	13	12
Mineral	5	3	1	2	5	4	3
Mingo	2	3	2	4	2	0	4
Monongalia	4	6	5	4	5	7	8
Monroe	3	3	5	3	3	4	2
Morgan	2	2	3	5	4	5	1
Nicholas	83	90	66	91	112	90	77
Ohio	6	2	4	3	4	2	22
Pendleton	6	6	10	18	14	14	11
Pleasants	14	13	7	4	8	8	4
Pocahontas	16	8	10	18	20	19	20
Preston	4	8	4	3	4	7	7
Putnam	8	8	10	13	15	9	9
Raleigh	39	39	30	50	32	50	57
Randolph	44	48	47	50	58	50	39
Ritchie	44	43	80	71	107	82	46
Roane	56	54	56	52	51	31	26
Summers	3	2	7	9	4	6	9
Taylor	5	4	8	10	12	12	9
Tucker	14	4	7	8	7	8	11
Tyler	8	2	5	4	6	5	12
Upshur	23	29	34	33	25	16	15
Wayne	0	4	5	4	5	6	6
Webster	27	28	23	24	28	62	75
Wetzel	9	5	8	5	8	8	9
Wirt	19	22	17	12	14	12	13
Wood	38	44	46	37	39	23	26
Wyoming	7	10	8	5	6	11	36

Residence Hall Occupancy Rates							
Spring 2015							
Hall Name	Room Type	# of rooms	Max # students	# occupants	Occupancy Rates	Male	Female
Goodwin	Single	192	192	162	84%	94	68
	Double	145	290	192	66%	122	70
	Total	337	482	354	73%	216	138
Pioneer Village	Single	156	156	99	67%	69	30
Sub Total	Single	348	348	261	75%	163	98
Sub Total	Double	145	290	192	66%	122	70
	Total	493	638	453	71%	285	168
Pickens	APT	6	12	6	50%	3	3
	Single	0	0	0	0%	0	0
	Double	12	24	7	29%	7	2
Grand Totals		511	674	466	70%	292	174

Calculated on the end of the 2nd week of class.

Residence Hall Occupancy Rates							
Fall 2015							
Hall Name	Room Type	# of rooms	Max # students	# occupants	Occupancy Rates	Male	Female
Goodwin	Single	192	192	182	95%	108	74
	Double	145	290	263	91%	155	108
	Total	337	482	445	92%	263	182
Pioneer Village	Single	156	156	125	82%	81	44
Sub Total	Single	348	348	307	89%	189	118
Sub Total	Double	145	290	263	91%	155	108
	Total	493	638	570	90%	344	226
Pickens	APT	6	12	6	50%	3	3
	Single	0	0	0	0	0	0
	Double	12	24	4	33%	3	1
Grand Totals		511	674	580	88%	350	230

Calculated on the end of the 2nd week of class.

Student/Faculty Ratios¹

Term	FTE Students	FTE Faculty	FTE Student/Faculty Ratio
Fall 2008	1262	70	18:1
Fall 2009	1356	74	18:1
Fall 2010	1468	79	19:1
Fall 2011	1412	80	18:1
Fall 2012	1445	93 ²	16:1
Fall 2013	1330	83	16:1
Fall 2014	1279	81	16:1
Fall 2015	1251	72	17:1

¹ Ratios computed by Student FTE (student total credit hours produced / 15) ; Faculty FTE (full-time faculty + 1/3 of part-time faculty)

² Reflects an increase in the number of courses being delivered to Adult Learners and High School students (dual credit).

Full-Time Instructional Faculty by Academic Rank

	Professor		Associate Professor		Assistant Professor		Instructor		Lecturer, Graduate Assistant & Other		
Term	#	%	#	%	#	%	#	%	#	%	Total
Fall 2009	9	15%	16	27%	22	37%	13	21%	0	0%	60
Fall 2010	10	15%	15	22%	24	36%	18	27%	0	0%	67
Fall 2011	10	15%	18	26%	28	41%	12	18%	0	0%	68
Fall 2012	11	17%	17	25%	29	44%	9	14%	0	0%	66
Fall 2013	11	16%	16	23%	34	49%	8	12%	0	0%	69
Fall 2014	9	13%	20	30%	32	48%	6	9%	0	0%	67
Fall 2015	8	13%	17	27%	29	45%	8	13%	2	2%	64

Full-Time Instructional Faculty by Tenure Status

	Professor			Associate Professor			Assistant Professor			Instructor			Lecturer, Graduate Assistant & Other			Total		
Term	#	Tenured	%	#	Tenured	%	#	Tenured	%	#	Tenured	%	#	Tenured	%	#	Tenured	%
Fall 2009	9	9	100%	16	11	69%	22	1	5%	13	0	0%	0	0	0%	60	21	35%
Fall 2010	10	10	100%	15	14	93%	24	1	4%	18	0	0%	0	0	0%	67	25	37%
Fall 2011	10	10	100%	18	17	94%	28	2	7%	12	0	0%	0	0	0%	68	29	43%
Fall 2012	11	11	100%	17	16	94%	29	3	10%	9	0	0%	0	0	0%	66	30	45%
Fall 2013	11	11	100%	16	15	94%	34	5	15%	8	0	0%	0	0	0%	69	31	45%
Fall 2014	9	9	100%	20	20	100%	32	4	13%	6	0	0%	0	0	0%	67	33	49%
Fall 2015	8	8	100%	17	17	100%	29	5	17%	8	0	0%	2	0	0%	64	34	54%

Source: Faculty and Staff Characteristics – WVHEPC. Data for 2014-15 reflects submission information

Full-Time Instructional Faculty by Highest Degree Held

Term	Doctoral		Masters		First Professional		Bachelors		Total
	#	%	#	%	#	%	#	%	
Fall 2009	32	53%	27	45%	0	0%	1	2%	60
Fall 2010	32	48%	32	48%	1	1%	2	3%	67
Fall 2011	37	54%	29	43%	1	1%	1	1%	68
Fall 2012	35	53%	30	45%	1	2%	0	0%	66
Fall 2013	36	52%	31	45%	2	3%	0	0%	69
Fall 2014	34	51%	31	46%	2	3%	0	0%	67
Fall 2015	32	50%	28	44%	1	1%	3	5%	64

Source: Faculty and Staff Characteristics – WVHEPC. Data for 2014-15 reflects submission information.

Part-Time Instructional Faculty by Highest Degree Held

Term	Doctoral		Masters		First Professional		Bachelors		Other		Total
	#	%	#	%	#	%	#	%	#	%	
Fall 2009	4	10%	25	61%	0	0%	9	22%	3	7%	41
Fall 2010	1	3%	25	69%	4	11%	4	11%	2	6%	36
Fall 2011	1	3%	24	67%	5	13%	6	17%	0	0%	36
Fall 2012 ¹	7	9%	62	76%	3	4%	9	11%	0	0%	81 ¹
Fall 2013	6	14%	28	67%	2	5%	5	12%	1	2%	42
Fall 2014	4	9%	31	76%	2	5%	2	5%	2	5%	41
Fall 2015	4	16%	16	64%	0	0%	4	16%	1	4%	25

¹ Reflects an increase in the number of courses being delivered to Adult Learners and High School students (dual credit).

Source: *Faculty and Staff Characteristics – WVHEPC. Data for 2014-15 reflects submission information.*

Full-Time Instructional Faculty by Gender

Term	Male		Female		Total Number
	Number	Percentage	Number	Percentage	
Fall 2009	37	62%	23	38%	60
Fall 2010	45	67%	22	33%	67
Fall 2011	46	68%	22	32%	68
Fall 2012	41	62%	25	38%	66
Fall 2013	42	61%	27	39%	69
Fall 2014	42	63%	25	37%	67
Fall 2015	43	67%	21	33%	64

Source: Faculty and Staff Characteristics – WVHEPC. Data for 2014-15 reflects submission information.

Full-Time Instructional Faculty by Ethnicity

	White, Non-Hispanic		Black, Non-Hispanic		Hispanic		Asian or Pacific Islander		American Indian or Alaskan Native			
Term	#	%	#	%	#	%	#	%	#	%	Total	% Minority
Fall 2009	58	97.0%	0	0.0%	1	1.7%	1	1.7%	0	0.0%	60	3.3%
Fall 2010	63	94.3%	1	1.49%	1	1.49%	2	2.99%	0	0.0%	67	6.0%
Fall 2011	65	95.6%	1	1.47%	1	1.47%	1	1.47%	0	0.0%	68	4.0%
Fall 2012	63	95.5%	1	1.51%	1	1.51%	1	1.51%	0	0.0%	66	4.5%
Fall 2013	65	94.2%	0	0%	1	1.45%	3	4.35%	0	0.0%	69	5.8%
Fall 2014	62	92.5%	0	0%	1	1.49%	4	5.97%	0	0.0%	67	7.5%
Fall 2015	58	90.6%	0	0%	2	3.1%	4	6.3%	0	0%	64	9.4%

Source: Faculty and Staff Characteristics – WVHEPC. Data for 2014-15 reflects submission information.

Full-Time Instructional Faculty - Average Nine-Month Base Salary¹

	Professor		Associate Professor		Assistant Professor		Instructor		Lecturer, Graduate Assistant & Other			
Term	#	Salary	#	Salary	#	Salary	#	Salary	#	Salary	Total	Average Salary
Fall 2009	9	\$64,608	16	\$56,851	22	\$43,158	13	\$35,587	0	\$0	60	\$48,367
Fall 2010	10	\$65,093	15	\$58,224	24	\$45,566	18	\$37,858	0	\$0	67	\$49,244
Fall 2011	10	\$69,249	18	\$60,610	28	\$48,367	12	\$42,015	0	\$0	68	\$53,558
Fall 2012	11	\$69,758	17	\$60,384	29	\$48,981	9	\$40,728	0	\$0	66	\$54,005
Fall 2013	11	\$68,381	16	\$61,692	34	\$48,789	8	\$39,846	0	\$0	69	\$53,867
Fall 2014	9	\$70,711	20	\$63,357	32	\$50,428	6	\$43,748	0	\$0	67	\$56,414
Fall 2015	8	\$70,649	17	\$61,479	29	\$49,848	8	\$42,268	2	\$41,252	64	\$54,059

¹Data does not include pay for extra or extended assignments.

Source: Faculty and Staff Characteristics – WVHEPC. Data for 2014-15 reflects submission information.

Semester Tuition and Fees 2008-2015

	2008-09	2009-10	2010-11	2011-12	2012-13	2013-14	2014-15	2015-16
Resident	\$2,243	\$2,444	\$2,444	\$2,676	\$2,930	\$3,192	\$3,348	\$3,516
Non-Resident	\$5,369	\$5,851	\$6,000	\$6,360	\$6,912	\$7,200	\$7,560	\$7,944
Metro Rate	\$3,700	\$4,032	\$4,116	\$4,416	\$4,812	\$5,196	\$5,460	\$5,944

Annual Tuition Comparisons Fall 2015

Institution Name	In-State Tuition	Out-of-State Tuition	Metro Rate	Room & Board
Bluefield State College	\$6,120	\$11,280	\$8,700	\$0
Concord University	\$6,744	\$14,824	\$0	\$8,439
Fairmont State University	\$6,620	\$13,970	\$0	\$8,078
Glenville State College	\$7,032	\$15,888	\$11,472	\$9,114
Shepherd University	\$6,830	\$16,628	\$0	\$9,521
West Liberty University	\$6,702	\$14,112	\$11,906	\$8,430
West Virginia State University	\$6,662	\$15,572	\$12,156	\$8,111
Average	\$6,673	\$14,611	\$11,059	\$8,616

Source: College Web sites

Revenues Summarized¹

	2011-12	2012-13	2013-14	2014-15
Operating Revenues:				
Tuition and fees	\$8,163,110	\$7,899,218	\$7,645,450	\$7,826,976
Government Contracts and Grants	\$3,828,959	\$3,347,424	\$2,834,096	\$2,919,401
Private gifts, grants, and contracts	\$1,256,253	\$2,965,364	\$4,350,729	\$2,175,292
Sales and services of educational activities	\$1,161,411	\$710,560	\$709,756	\$523,336
Sales and services of auxiliary enterprises	\$5,369,938	\$6,482,958	\$6,122,893	\$6,441,727
Other sources	\$1,035,093	\$936,426	\$854,315	\$912,606
Payments made on behalf of College	\$0	\$0	\$0	\$241,860
Total Operating Revenues	\$20,814,764	\$22,341,950	\$22,517,239	\$20,799,338
Non-Operating Revenues:				
Government Appropriations	\$7,097,804	\$7,206,804	\$6,418,711	\$6,318,177
Federal PELL Grants	\$3,538,833	\$3,351,405	\$2,921,831	\$2,885,617
Income from investments	\$7,279	\$7,049	\$8,857	\$3,890
Total Non-Operating Revenues	\$10,643,916	\$10,565,258	\$9,349,399	\$9,449,544
Other Capital Proceeds from Commission	\$595,893	\$6,315,957	\$3,207,159	\$212,000
Capital Gifts (Private)	\$603,234	\$6,186,663	\$1,097,145	1,334,424
Capital Appropriations from State		\$4,000,000	\$0	\$0
Total revenues	\$32,657,807	\$49,409,828	\$36,170,942	\$31,802,290

¹See GSC Audited Financial Statements for Full Revenue Reports

Educational and General (E&G) Expenditures Summarized¹

	2011-12	2012-13	2013-14	2014-15
Operating Expenses:				
Instruction	\$6,942,428	\$6,938,531	\$6,625,178	\$5,854,459
Academic Support	\$1,199,797	\$1,015,399	\$1,004,275	\$1,169,702
Student Services	\$2,199,934	\$2,134,643	\$2,226,537	\$2,832,967
General Institutional Support	\$4,390,695	\$3,716,804	\$3,172,879	\$3,304,831
Operation and Maintenance of Plant	\$3,234,550	\$2,373,187	\$2,406,427	\$2,826,411
Scholarships and Aid	\$8,181,621	\$8,766,163	\$8,090,497	\$8,504,662
Auxiliary Enterprises	\$5,006,064	\$4,704,302	\$4,591,233	\$4,833,043
Depreciation	\$2,082,465	\$1,982,428	\$2,013,731	\$2,430,014
Fees Assessed by Policy Commission	\$73,500	\$76,705	\$81,304	\$73,794
Loan Cancellations and Write-Offs	\$0	\$0	\$0	\$1,369
Total Operating Expenses	\$33,311,054	\$31,708,162	\$30,212,061	\$31,831,252
Non-Operating Expenses:				
Interest on Indebtedness	\$1,709,576	\$1,697,499	\$1,735,131	\$1,683,723
Other	\$41,874	\$18,233	\$141,245	\$17,982
Total Non-Operating Expenses	\$1,751,450	\$1,715,732	\$1,876,376	\$41,701,705
Total Expenditures	\$35,062,504	\$33,423,894	\$32,088,437	\$33,532,957

¹See GSC Audited Financial Statements for Full Expenditure Reports

**Financial Aid Summary
First-Time Full-Time Freshmen**

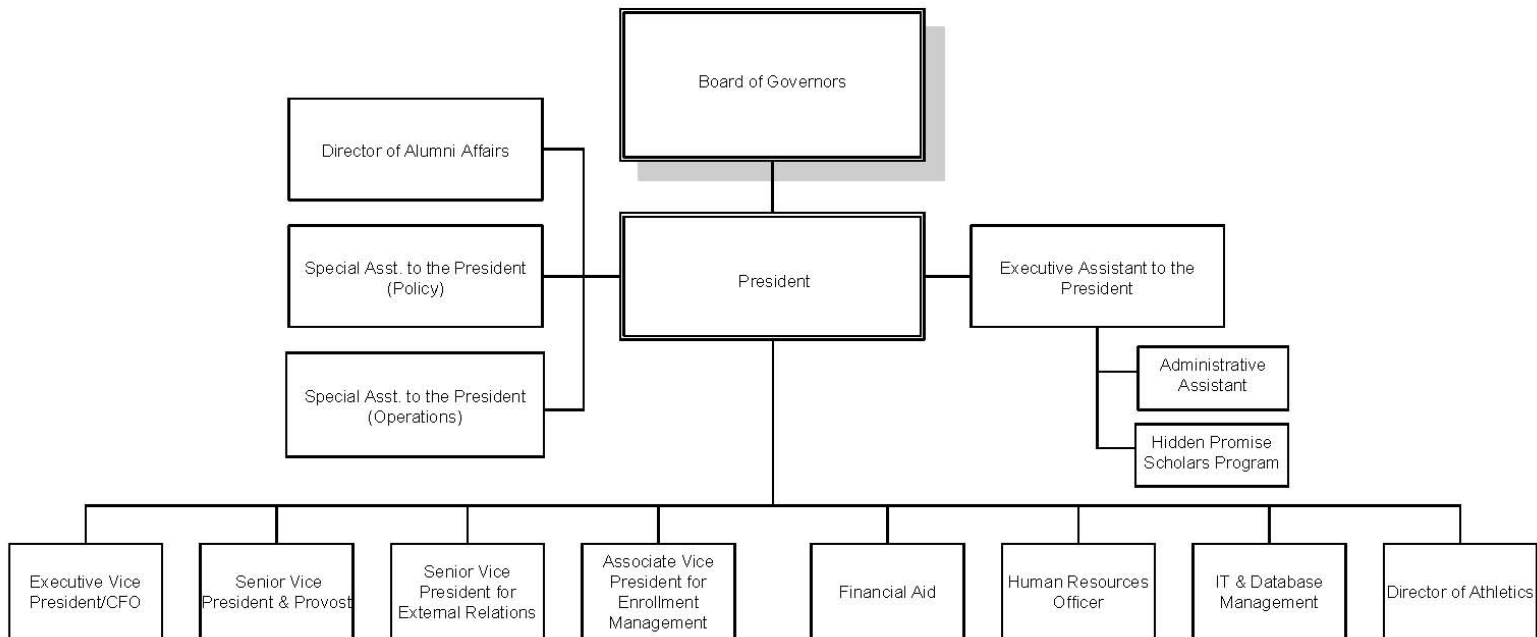
	2010-2011	2011-2012	2012-13	2013-14	2014-15
Applied for Financial Aid	296	284	339	280	257
Determined to have Financial need	263	244	293	239	226
Awarded Financial Aid	261	241	290	235	226
Average Financial Package	\$11,227	\$12,235	\$12,781	\$11,763	\$13,468

**Financial Aid
Processed**

	2010-2011	2011-2012	2012-2013	2013-2014	2014-2015
All types of Aid	\$9,759,269	\$9,172,338	\$9,925,466	\$9,185,718	\$9,363,642
Loans Processed	\$7,279,348	\$7,496,207	\$7,314,086	\$6,210,546	\$5,668,041
Total	\$17,038,617	\$16,668,545	\$17,239,552	\$15,396,264	\$15,031,683



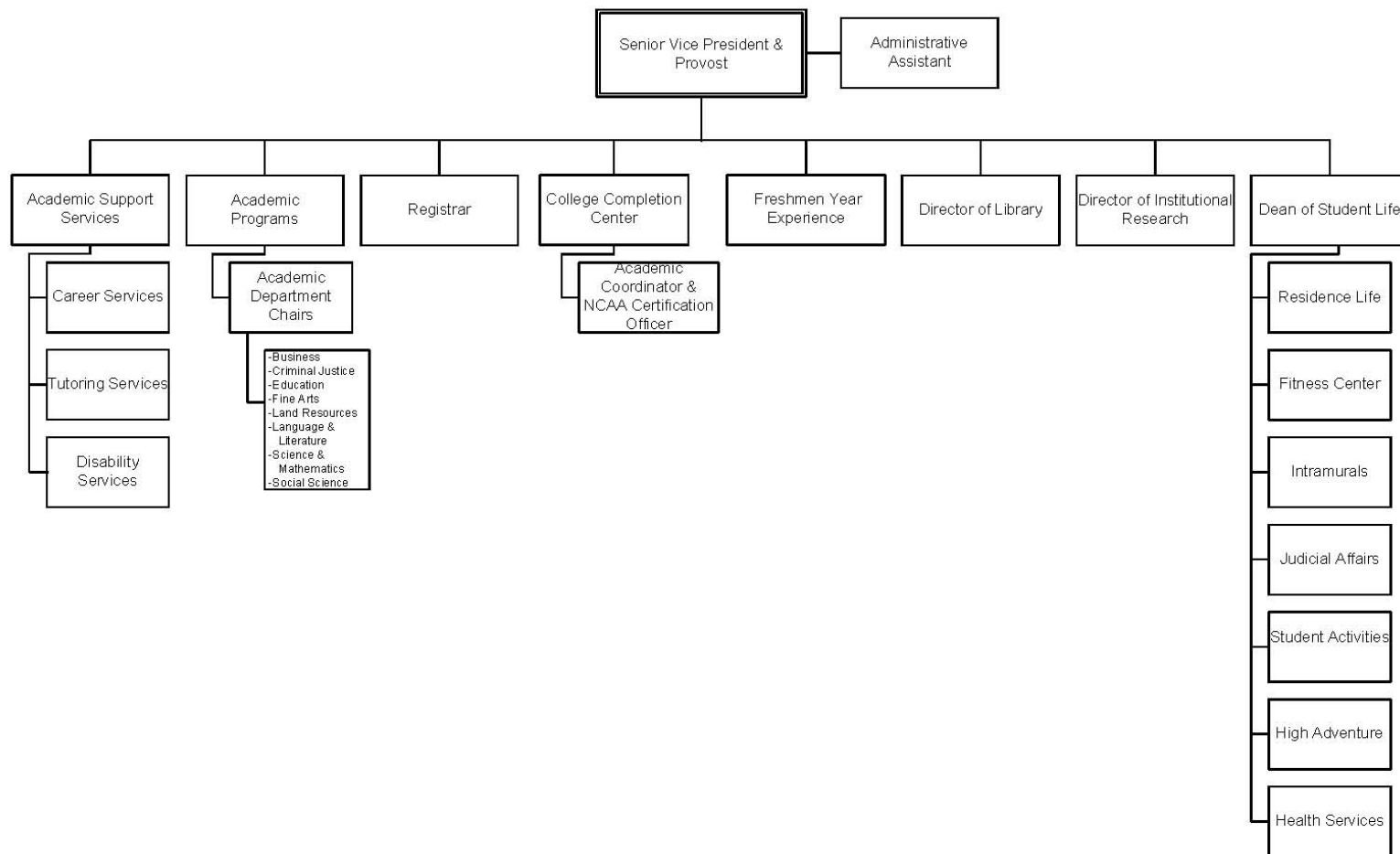
GLENVILLE STATE COLLEGE
ORGANIZATIONAL CHART
2014-2015



Updated 06/24/14



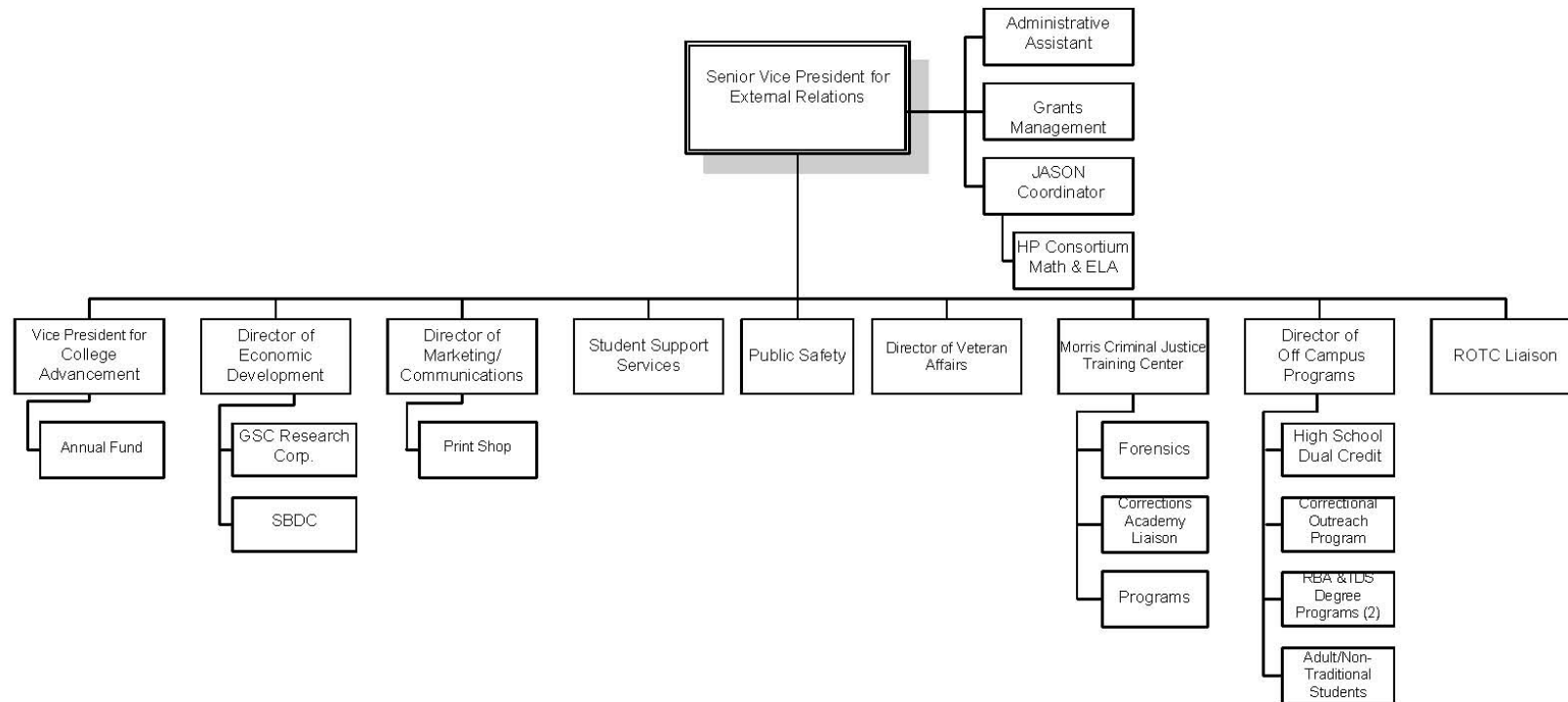
GLENVILLE STATE COLLEGE
ORGANIZATIONAL CHART
Senior Vice President & Provost
2014-2015



Updated 06/24/14



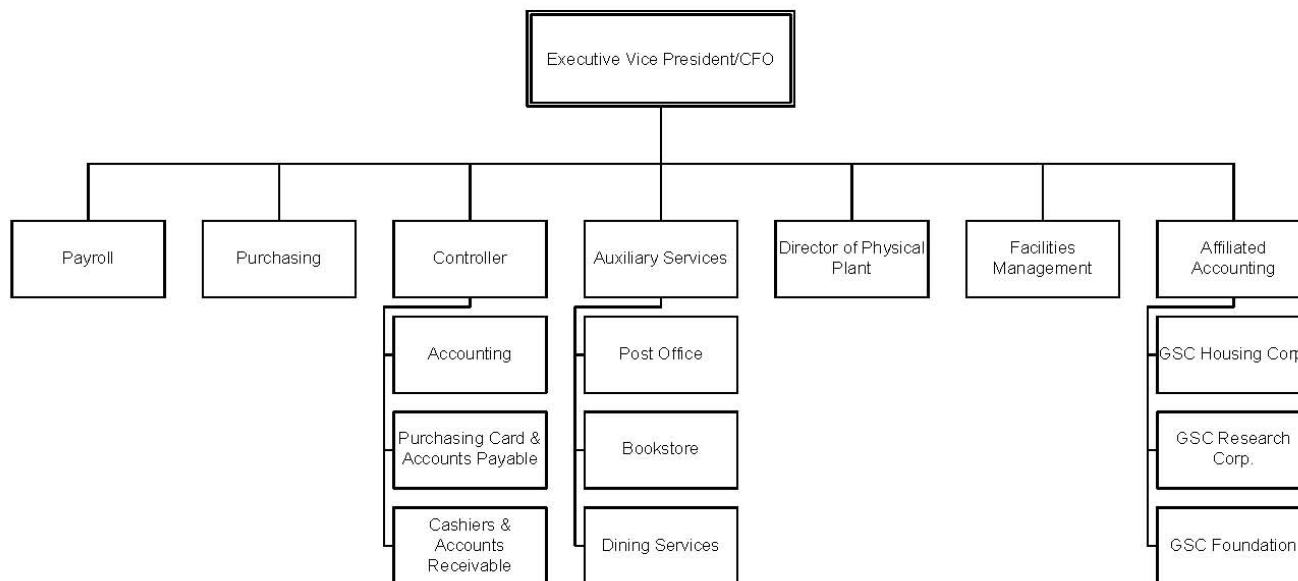
GLENVILLE STATE COLLEGE
ORGANIZATIONAL CHART
Senior Vice President for
External Relations
2014-2015



Updated 10/28/14



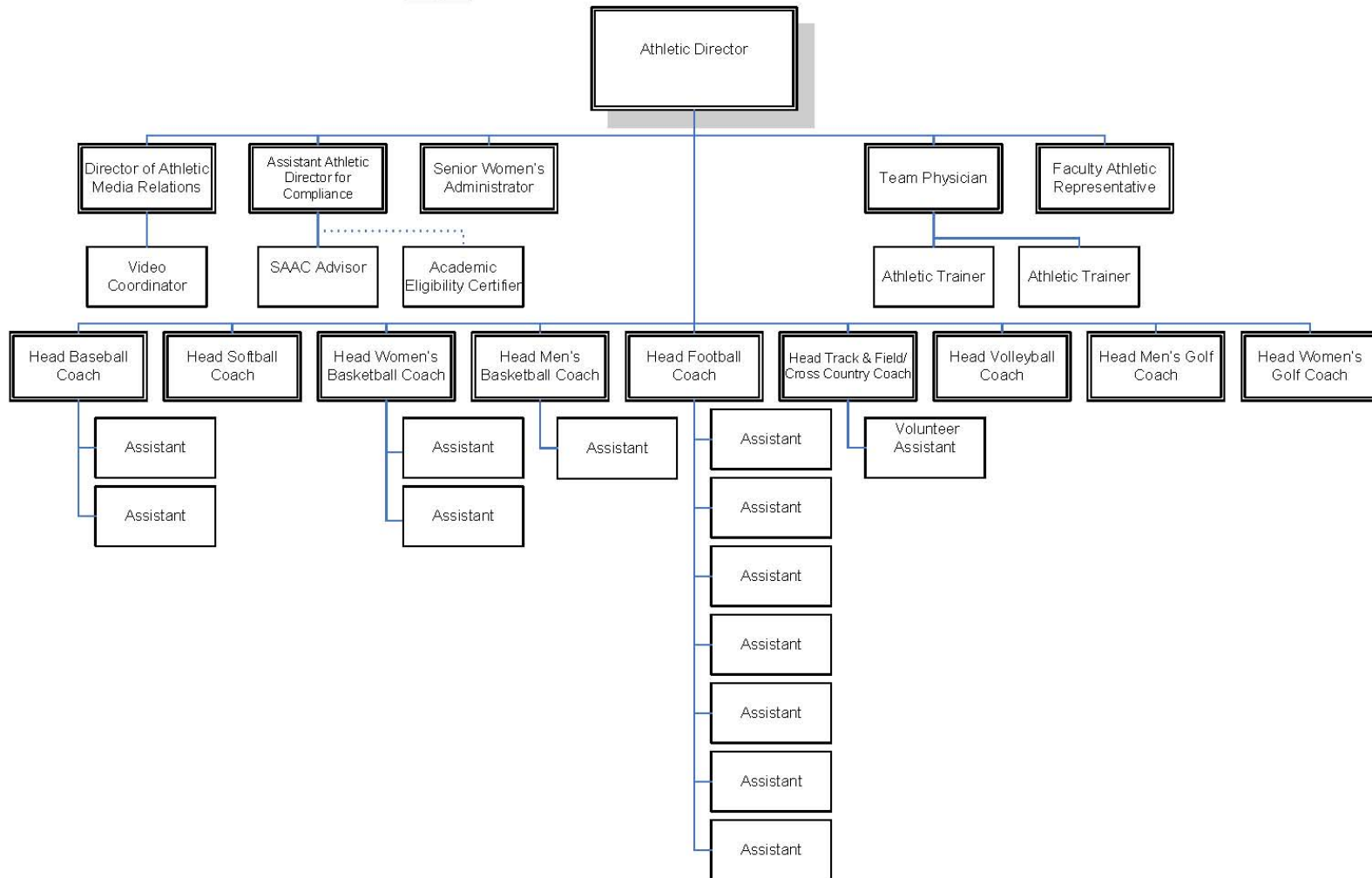
GLENVILLE STATE COLLEGE
ORGANIZATIONAL CHART
Executive Vice President of Finance/CFO
2014-2015



Updated 06/24/14



GLENVILLE STATE COLLEGE
ATHLETICS ORGANIZATIONAL CHART
2014-2015



Updated 10/27/14

Committee Membership – 2014-2015 not updated for 2015-2016

Academic Appeals	Academic Policy	Assessment Committee	Athletic Committee
Ann Reed, Chair & Adm. Liaison	Jared Wilson, Chair	Rebecca Swisher, Chair	Janet Bailey, Chair /Adm. Liaison
Sallie Anglin	Kelly Treece, Vice-Chair	Shara Curry, Vice Chair	Heather Allman
Art DeMatteo	Glenn Abraham	Neal Benson	Mary Alltop
Jason Barr	Chuck Batson	Chris Cosner	Ashley Bush
Rico Gazal	Ross Conover	Alan Daniel	Joe Evans
Mahesh Khadka	Tara Cosco	Gregory Lemmons	Mandy Frymier
Alison Witte	David Lewis	David O'Dell	Bob Hardman
Gary Morris (Alternate)	Nancy Zane	Marjorie Stewart	Dwight Heaster
Joseph Wood (Alternate)	John Peek, Adm. Liaison	James Witte	Marcal Lazenby
	Allison Taylor	John Peek, Adm. Liaison	Ann Reed
	Jacob Yocum	Allegra Davis	John Royce
			Jim Tatman

College Leadership Council	Commencement/Convocation	Curriculum Committee	Diversity Committee
John Peek, Chair & Adm. Liaison	John Peek, Chair	Gary Morris, Chair	John Peek, Chair & Adm. Liaison
Janet Bailey	Duane Chapman	Mark Mills, Vice-Chair	Liza Brenner
Lloyd Bone	Wayne de Rosset	Chuck Batson	Duane Chapman
Wayne deRosset	Denise Ellyson	Lloyd Bone	Megan Gibbons
Denise Ellyson	Lois Miller	Kevin Cain	Jodi Ocheltree
Kevin Evans	Deb Nagy	Wayne de Rosset	Garrett Rinehart
Bob Hardman	Tom Ratliff	Denise Ellyson	
Ann Reed	Teresa Sterns	Dwight Heaster	
Jim Tatman	David Millard, Adm. Liaison	Ida Mills	
John Taylor		Sara Sawyer	
Milan Vavrek		Milan Vavrek	
Dennis Wemm		Ed Wood	
Conner Ferguson		Melody Wise	
		John Peek, Adm. Liaison	
		Allison Taylor	
		Jacob Yocum	

Committee Membership – 2014-2015 not updated for 2015-2016

Enrollment Management	Facilities Committee	Faculty Development	Faculty Senate
Greg King, Chair	Tom Ratliff, Chair/Adm. Liaison	Sara Sawyer, Chair	Dennis Wemm, President
Janet Bailey	Betsy Barr	Jason Barr	Heather Allman
Neal Benson	Jerry Burkhammer	Arthur DeMatteo	Larry Baker
Michael Bobic	Bill Deel	Cinda Echard	Adam Black
Duane Chapman	Bob Hardman	Carmine Grieco	Liza Brenner
Adrian Duelley	Debi Jenkins	Gregory Lemmons	Angela Cline
Cinda Echard	Debra Nagy	Brian Perkins	Alan Daniel
Joe Evans	John Peek	Marjorie Stewart	Art DeMatteo
Josh James	Jason Phares	John Taylor	Cinda Echard
Karen Lay	James Spears	John Peek, Adm. Liaison	Kevin Evans
Jason Phares	Dennis Wemm		Megan Gibbons
Sarah Ratliff	Milan Vavrek		Carmine Grieco
Trae Sprague	Allison Taylor		Ida Mills
Ashley Weir			David O'Dell
Kelsie Tonkin			Paul Peck
			John Taylor
			Kelly Treece
			Jonathan Minton, alternate
			John Peek, Adm. Liaison

Financial Aid Appeals	Homecoming	International Committee	Institutional Review Board
Karen Lay, Chair & Adm. Liaison	Deb Nagy, Chair	John Peek, Chair & Adm. Liaison	Ida Mills, Chair
Robin Cottrill	Janet Bailey	Megan Gibbons	Alan Daniel
Ashley Haddox	Lloyd Bone	Josh James	Carmine Grieco
Jonathan Minton	Jerry Burkhammer	Mahesh Khadka	Sara Sawyer
Ann Reed	Duane Chapman	Ed Wood	Tammy Stewart
Rick Witte	Dustin Crutchfield	Jong-Hoon Yu	John Taylor
	Wayne de Rosset	Dejana Ludoski	Alison Witte
	Jodi Ocheltree	Garrett Rinehart	John Peek, Adm. Liaison
	Jason Phares	Olivia Snyder	
	T Ratliff /T Marks/T Wellings		
	SGA Officers		

Committee Membership – 2014-2015 not updated for 2015-2016

Judicial Council	Library Advisory Committee	Promotion & Tenure	Retention Committee
Jerry Burkhammer, Chair	Amy Beckett	Rico Gazal, Chair	John Peek, Chair/Admin Liaison
Heather Allman	Shara Curry	Gary Arbogast	Mary Alltop
Amy Beckett	Jane Friedmann	Liza Brenner	David Bailey
Ashley Bush	Melissa Gish	Art DeMatteo	Duane Chapman
Avan McHenry	Cheryl McKinney	Dennis Wemm	Angela Cline
Duane Chapman, Adm. Liaison	John McKinney	Joe Evans, alternate	Mandy Frymier
Samantha Fulks	Ida Mills		Ross Conover
Quentin Murphy	Gail Westbrook		Melissa Gish
Jared Shipe	Alison Witte		Jason Phares
	Rick Witte		John Royce
	John Peek, Adm. Liaison		Allison Taylor
	Larisa Gordon		
	Garrett Rinehart		

Scholarship Committee	Staff Council	Student Government Association	Student Life
Karen Lay, Chair	Jim Tatman, President	Allison Taylor, President	Duane Chapman, Chair, Adm. Liaison
Duane Chapman	Mary Alltop	Jacob Yocum, Vice President	Heather Allman
Teresa Dody	Carla Conley	Conner Ferguson	Mary Alltop
Denny Pounds	Brittany Frymier	Larisa Gordon	Amy Beckett
Cheryl McKinney	Debi Jenkins	Quentin Murphy	Adam Black
Ashley Weir	Mindy Marsh	John Royce	Jerry Burkhammer
Greg King, Admin Liaison	Lois Miller	Duane Chapman, Adm. Liaison	Avan McHenry
	Jason Phares	Heather Allman, advisor	Ed Wood
	Ann Reed	David Bailey, advisor	Conner Ferguson
	Sheri Skidmore	Larry Baker, advisor	Larisa Gordon
	Eric Squires	Onick Lewis, advisor	Quentin Murphy
	Gail Westbrook		Jared Shipe
	Krystal Smith, Adm. Liaison		Jacob Yocum

Committee Membership – 2014-2015 not updated for 2015-2016

Ad hoc/Task Force Committees			
Default Management	Early Intervention Team	HLC Assurance Team	Media
Karen Lay, Chair	John Peek, Chair	John Peek, Chair	John Peek, Chair & Admin Liaison
Stacy Adkins	Jerry Burkhammer	Rick Accord	Dustin Crutchfield
Neal Benson	Duane Chapman	Neal Benson	Jonathan Minton
David Bailey	Ashley Edwards	Duane Chapman	Jodi Ocheltree
Duane Chapman	Joe Evans	Paul Peck	Marjorie Stewart
Carla Conley	Marcal Lazenby	Leslie Ward	Dennis Wemm
Joanna DiStefano	Bill Lilly	Melody Wise	Jennifer Wenner
Mawahna Gifford	Ann Reed		
Ashley Hopkins / Onick Lewis	Ashley Weir		
Bill Lilly			
Ann Reed			
Ashley Weir			
Greg King, Admin Liaison			
Pioneer Showcase	Retention Study Team	Strategic Planning Team	Textbook Affordability
Sara Sawyer, Chair	John Peek, Chair	John Peek, Chair	John Peek, Chair & Admin Liaison
Sallie Anglin	Alan Daniel	Janet Bailey	Gary Arbogast
Amy Beckett	Joe Evans	Jerry Burkhammer	Liza Brenner
Liza Brenner	Greg King	Duane Chapman	Duane Chapman
Angela Cline	Bill Lilly	Kevin Evans	Michael Gherke
Alan Daniel	David Millard	Robert Hardman	Charlotte Squires
Kevin Evans	James Spears	David Millard	Gail Westbrook
Carmine Grieco	Fred Walborn	Lois Miller	
Jonathan Minton		Jason Phares	
John Peek, Admin Liaison		Dennis Pounds	
		Tom Ratliff	
		James Spears	
		Allison Taylor	

