



GLENVILLE
STATE COLLEGE

Fact Book

Fall 2016

Table of Contents

Enrollment Trends	Page
Fall	
Fall Enrollment by Class	1
First-Time Freshmen	2
First-Time Freshmen – Baccalaureate Program	3
First-Time Freshmen – Associate Program	4
New Transfers	5
New Transfers – Baccalaureate Program Enrollment	6
New Transfers – Associate Program Enrollment	6
Total Headcount & FTE by Course Location	7
Total Headcount & FTE by Online Courses	7
Fall Enrollment Headcount Comparison	8
Fall Enrollment FTE Comparison	8
Applicants Accepted and Enrolled – All students	9
Applicants Accepted and Enrolled – First-Time Freshmen	10
Applicants Accepted and Enrolled – Transfer Students	11
Applicants Accepted and Enrolled – Re-Admit Students	12
Spring	
Spring Enrollment by Class	13
FTE by Spring Semesters	13
New First-Time Freshmen for Spring	14
New First-Time Freshmen for Spring – Baccalaureate Program	15
New First-Time Freshmen for Spring – Associate Program	15
New Transfers for Spring	16
New Transfers for Spring – Baccalaureate Program	17
New Transfers for Spring – Associate Program	17
Summer	
Summer Enrollment by Class	18
FTE by Summer Semesters	18

Retention
Rates

Fall to Fall

Retention of First-Time, Full-Time Students , Fall – Fall	19
Retention of All Students – Degree & Non-Degree Seeking, Fall – Fall	19
Full-Time Students Retention Baccalaureate Program, Fall – Fall	20
Full-Time Students Retention Associate Program, Fall – Fall	20

Fall to Spring

Retention of First-Time, Full-Time Students , Fall – Spring	21
Retention of All Students – Degree & Non-Degree Seeking, Fall – Spring	21
Full-Time Students Retention Baccalaureate Program, Fall – Spring	22
Full-Time Students Retention Associate Program, Fall – Spring	22

Spring to Fall

Retention of First-Time, Full-Time Students – Spring Admits, Spring – Fall	23
Retention of All Students – Degree & Non-Degree Seeking, Spring – Fall	23
Full-Time Students Retention Baccalaureate Program, Spring – Fall	24
Full-Time Students Retention Associate Program, Spring – Fall	24

Graduation

Six Year Graduation Rates (First-Time, Full-Time)	25
Five Year Graduation Rates (First-Time, Full-Time)	25
Four Year Graduation Rates (First-Time, Full-Time)	25
Six Year Graduation Rates (received Athletic Related Financial Aid)	26

Program
Profile

Full-Time Enrollment by Degree Program	27
Part-Time Enrollment by Degree Program	28
Enrollment by Academic Program	29
Graduation by Academic Program	33
Degrees Conferred	36

Student
Profile

Student Profile Summary	37
Enrollment by Gender	38
Enrollment by State of Residence	39
Enrollment by Ethnicity	40
Average Age of All Students	41
Students Age 25 and Older – All	41
Students Age 25 and Older – All Freshmen	42
Students Age 25 and Older – Full-Time	43
Students Age 25 and Older – Part-Time	43
ACT Scores and SAT Scores – Fall	44
ACT Scores and SAT Scores – Spring Admits	45
Grade Point Averages – Semester	46
Grade Point Averages – Cumulative	46
Enrollment in One or More Developmental Courses - Fall	47
Enrollment in One or More Developmental Courses –Spring Admits	47
West Virginia County Enrollment – Top 25 by number Enrolled	48
West Virginia County Enrollment – by County	49
Residence Hall Occupancy Rates – Spring 2014	51
Residence Hall Occupancy Rates – Fall 2014	52

Faculty
Profile

Student/Faculty Ratios	53
Full-Time Faculty by Academic Rank	54
Full-Time Faculty by Tenure Status	54
Full-Time Faculty by Highest Degree Held	55
Part-Time Faculty by Highest Degree Held	56
Full-Time Faculty by Gender	57
Full-Time Faculty by Ethnicity	58
Full Time Instructional Faculty – Average Nine-Month Salary	59

Financial	
Semester Tuition and Fees	60
Annual Tuition Comparisons	60
Revenue Summarized	61
Educational and General (E&G) Expenditures Summarized	62
Financial Aid Summary, First-Time Freshman	63
Financial Aid Processed	63
Organizational Charts	
Board of Governors, President, and Executive Staff	64
Academic and Student Affairs	65
External Relations	66
Business & Finance	67
Athletics	68
Committees	
Academic Appeals, Academic Policy, Assessment, Athletic, College Leadership, Commencement/Convocation, Curriculum, Enrollment Management	69
Facilities, Faculty Development, Faculty Senate, Financial Aid Appeals, Homecoming, International/Diversity, Judicial Council	70
Library Advisory , Promotion & Tenure, Retention, Scholarship, Staff Council, Student Government Association, Student Life	71
At Risk Student Advising, Default Management, Early Intervention Team, HLC Assurance Team, Honors, Institutional Review Board, Online Course, Pioneer Showcase	72
Textbook Affordability, Threat Assessment	73

Fall reporting posted in October 2016 to

Fall Enrollment by Class

Class	2010	2011	2012	2013	2014	2015	2016
Freshman	708	682	680	573	566	489	517
Sophomore	247	264	225	220	247	252	233
Junior	157	226	199	185	183	156	186
Senior	331	308	334	287	256	260	232
Non-Degree ¹	385	377	460	585	550	575	473
Total Headcount	1828	1857	1898	1850	1802	1732	1641

Percentage of Fall Enrollment by Class

Class	2010	2011	2012	2013	2014	2015	2016
Freshman	39%	37%	36%	31%	31%	28%	32%
Sophomore	13%	14%	12%	12%	14%	15%	14%
Junior	9%	12%	10%	10%	10%	9%	11%
Senior	18%	17%	18%	16%	14%	15%	14%
Non-Degree ¹	21%	20%	24%	31%	31%	28%	29%
Total Headcount	1828	1857	1898	1850	1802	1732	1641

¹ Students not seeking a degree and high school early entrance students.

First-Time Freshmen

Term	Enrolled Full-Time	Male	Female	Enrolled Part-Time	Male	Female	Total Enrolled
Fall 2010	313	172	141	103 ¹	93	10	416
Fall 2011	284	182	102	71	60	11	355
Fall 2012	339	224	115	61	55	6	400
Fall 2013	280	163	117	35	19	16	315
Fall 2014	264	148	116	80	66	14	344
Fall 2015	287	161	126	54	59	5	341
Fall 2016	320	165	155	77	75	2	397

¹ New off-site associate degree programs at Federal Corrections Institution (FCI) Gilmer and for West Virginia Department of Military Affairs and Public Safety (DMAPS).

First-Time Freshmen - Baccalaureate Program

Term	Enrolled Full-Time	Male	Female	Enrolled Part-Time	Male	Female	Total Enrolled
Fall 2010 ¹	149	85	77	1	0	1	150
Fall 2011	155	91	64	2	2	0	157
Fall 2012	169	112	57	1	0	1	170
Fall 2013	175	96	79	1	1	0	176
Fall 2014	195	107	88	5	1	4	200
Fall 2015	206	112	94	3	1	2	209
Fall 2016	252	120	132	36	36	0	288

¹Adjusted ACT and SAT requirements limiting number of students admitted to a baccalaureate program.

First-Time Freshmen - Associate Program

Term	Enrolled Full-Time	Male	Female	Enrolled Part-Time	Male	Female	Total Enrolled
Fall 2010 ¹	164	87	64	102	93	9	266
Fall 2011	129	91	38	69	58	11	198
Fall 2012	170	112	58	60	55	5	230
Fall 2013	105	67	38	34	18	16	139
Fall 2014	69	41	28	75	65	10	144
Fall 2015	81	49	32	47	45	2	128
Fall 2016	68	45	23	41	39	2	109

¹ Adjusted ACT and SAT requirements limiting number of students admitted to a baccalaureate program.

New Transfers for Fall

Term	Enrolled Full-Time	Male	Female	Enrolled Part-Time	Male	Female	Total Enrolled
Fall 2010	104	54	50	56 ¹	28	28	160
Fall 2011	101	60	41	51	29	22	152
Fall 2012	92	54	38	28	24	4	120
Fall 2013	58	36	22	97	55	42	155
Fall 2014	80	49	31	63	41	22	143
Fall 2015	70	45	25	32	29	3	102
Fall 2016	68	36	32	62	57	5	130

¹West Virginia Department of Military Affairs and Public Safety (DMAPS) transfers into Associate Criminal Justice Program.

New Transfers - Baccalaureate Program

Term	Enrolled Full-Time	Male	Female	Enrolled Part-Time	Male	Female	Total Enrolled
Fall 2010	70	38	32	4	2	2	74
Fall 2011	64	38	26	5	0	5	69
Fall 2012	64	37	27	3	1	2	67
Fall 2013	51	34	17	5	3	2	56
Fall 2014	66	42	24	7	5	2	73
Fall 2015	61	37	24	3	1	2	64
Fall 2016	61	32	29	37	34	3	98

New Transfers - Associate Program

Term	Enrolled Full-Time	Male	Female	Enrolled Part-Time	Male	Female	Total Enrolled
Fall 2010 ¹	34	16	18	52	26	26	86
Fall 2011	37	22	15	46	29	17	83
Fall 2012	28	17	11	25	23	2	53
Fall 2013	7	2	5	92	52	40	99
Fall 2014	14	7	7	56	36	20	70
Fall 2015	8	7	1	28	27	1	36
Fall 2016	7	4	3	24	23	1	31

¹West Virginia Department of Military Affairs and Public Safety (DMAPS) transfers into Associate Criminal Justice Program.

Enrollment by Course Location

	Fall 2012		Fall 2013		Fall 2014		Fall 2015		Fall 2016	
Location	Headcount	FTE	Headcount	FTE	Headcount	FTE	Headcount	FTE	Headcount	FTE
Glenville Campus	1476	1176	1136	1051	1037	974	1217	1008	1182	1016
Incarcerated*	183	64	107	58	139	69	138	56	226*	75
New River ¹	13	6	10	4	12	3	0	0	0	0
Braxton Center	51	23	46	18	84	24	72	17	35	9
High Schools	200	86	236	75	251	71	307	71	238	57

Enrollment by Online Courses

	Fall 2012		Fall 2013		Fall 2014		Fall 2015		Fall 2016	
Location	Headcount	FTE	Headcount	FTE	Headcount	FTE	Headcount	FTE	Headcount	FTE
Glenville Campus	415	109	440	120	280	78	329	77	351	106
DMAPS ²	271	65	93	45	189	75	52	25	6	1
Total	686	174	533	165	469	153	381	102	357	107

*Addition of Huttonsville students

¹ 2 + 2 Education Program.

²West Virginia Department of Military Affairs and Public Safety

Fall Enrollment Headcount Comparison

Institution Name	Fall 2010	Fall 2011	Fall 2012	Fall 2013	Fall 2014	Fall 2015	Fall 2016
Bluefield State College	2101	1929	1935	1747	1563	1482	1362
Concord University	2919	2797	2834	2767	2545	2498	2451
Fairmont State University	4708	4617	4451	4232	4034	4025	4049
Glenville State College	1828	1857	1898	1850	1802	1732	1641
Shepherd University	4336	4393	4326	4221	4041	3904	3779
West Liberty University	2738	2787	2804	2775	2693	2347	2310
West Virginia State University	3239	2827	2644	2677	2884	3221	3542

Fall Enrollment FTE Comparison

Institution Name	Fall 2012	Fall 2013	Fall 2014	Fall 2015	Fall 2016
Bluefield State College	1717	1556	1352	1302	1202
Concord University	2621	2539	2305	2260	2176
Fairmont State University	3939	3745	3565	3556	3626
Glenville State College	1445	1330	1279	1251	1263
Shepherd University	3774	3642	3458	3290	3094
West Liberty University	2672	2662	2513	2232	2190
West Virginia State University	2108	2158	2229	2301	2363

Applicants Accepted and Enrolled All Students

Term	Applicants	Male	Female	Number Accepted	Enrolled Full-Time	Male	Female	Enrolled Part-Time	Male	Female	Total Enrolled
Fall 2010	1347	696	651	1094	457	247	210	174	130	44	631
Fall 2011	1588	877	711	1345	425	256	169	130	92	38	555
Fall 2012	1568	888	680	1354	472	297	175	116	94	22	588
Fall 2013	1443	725	718	1140	330	197	133	131	73	58	461
Fall 2014	1640	833	807	717 ¹	366	210	156	166	114	52	532
Fall 2015	1670	853	817	1201	375	215	160	98	80	18	473
Fall 2016	1554	853	701	1145	404	211	193	142	134	8	546

Applicants Accepted and Enrolled Conversion Percentages

Term	Accepted to Applicants	Full-Time to Accepted	Part-Time to Accepted	Enrollment to Accepted
Fall 2010	81%	42%	16%	58%
Fall 2011	85%	31%	10%	41%
Fall 2012	86%	35%	8%	43%
Fall 2013	79%	29%	11%	40%
Fall 2014 ¹	44%	51%	23%	74%
Fall 2015	72%	31%	8%	39%
Fall 2016	74%	35%	12%	48%

¹ Applicants with incomplete applications not accepted.

Applicants Accepted and Enrolled First-Time Freshmen

Term	Applicants	Male	Female	Number Accepted	Enrolled Full-Time	Male	Female	Enrolled Part-Time	Male	Female	Total Enrolled
Fall 2010	1025	529	496	796	313	172	141	103	93	10	416
Fall 2011	1246	690	556	1023	284	182	102	71	60	11	355
Fall 2012	1218	696	522	1024	339	224	115	61	55	6	400
Fall 2013	1198	586	612	892	280	163	117	35	19	16	315
Fall 2014 ¹	1292	644	648	602 ¹	264	148	116	80	66	14	344
Fall 2015	1430	712	718	1036	287	161	126	54	49	5	341
Fall 2016	1316	685	631	914	320	165	155	77	75	2	397

Applicants Accepted and Enrolled Conversion Percentages First-Time Freshmen

Term	Accepted to Applicants	Full-Time to Accepted	Part-Time to Accepted	Enrollment to Accepted
Fall 2010	78%	39%	13%	52%
Fall 2011	82%	28%	7%	35%
Fall 2012	84%	33%	6%	39%
Fall 2013	74%	31%	4%	35%
Fall 2014 ¹	47%	44%	13%	57%
Fall 2015	72%	28%	5%	33%
Fall 2016	69%	35%	8%	43%

¹ Applicants with incomplete applications not accepted.

Applicants Accepted and Enrolled New Transfer Students

Term	Applicants	Male	Female	Number Accepted	Enrolled Full-Time	Male	Female	Enrolled Part-Time	Male	Female	Total Enrolled
Fall 2010	229	123	106	205	104	54	50	56 ¹	28	28	160 ¹
Fall 2011	255	147	108	236	101	60	41	51	29	22	152
Fall 2012	247	140	107	227	92	54	38	28	24	4	120
Fall 2013	240	135	105	224	58	36	22	97	55	42	155
Fall 2014 ²	264	151	113	147 ²	80	49	31	63	41	22	143
Fall 2015	208	130	78	133	70	45	25	32	29	3	102
Fall 2016	219	156	63	215	68	36	32	62	57	5	130

Applicants Accepted and Enrolled Conversion Percentages New Transfer Students

Term	Accepted to Applicants	Full-Time to Accepted	Part-Time to Accepted	Enrollment to Accepted
Fall 2010	89%	51%	27%	78%
Fall 2011	93%	43%	22%	67%
Fall 2012	92%	41%	12%	53%
Fall 2013	93%	26%	43%	69%
Fall 2014 ²	56%	54%	43%	97%
Fall 2015	64%	52%	24%	77%
Fall 2016	98%	32%	29%	60%

¹ Significant Fall 2010 increases reflects enrollment in new degree offerings and enrollment growth at Federal Corrections Institution (FCI) Gilmer and West Virginia Department of Military Affairs and Public Safety (DMAPS).

² Applicants with incomplete applications not accepted.

Applicants Accepted and Enrolled Re-Admit Students

Term	Applicants	Male	Female	Number Accepted	Enrolled Full-Time	Male	Female	Enrolled Part-Time	Male	Female	Total Enrolled
Fall 2010	93	44	49	93	40	21	19	15	9	6	55
Fall 2011	87	40	47	86	40	14	26	8	3	5	48
Fall 2012	103	52	51	103	41	19	22	27	15	12	68
Fall 2013	79	39	40	75	19	8	11	32	19	13	51
Fall 2014 ¹	74	33	41	48	22	13	9	23	7	16	45
Fall 2015	32	11	21	32	18	9	9	14	2	12	32
Fall 2016	19	12	7	19	16	10	6	3	2	1	19

¹ Applicants with incomplete applications not accepted.

Spring Enrollment by Class

Class	2010	2011	2012	2013	2014	2015	2016
Freshman	578	611	544	518	468	349	398
Sophomore	219	264	273	253	257	306	224
Junior	178	213	222	200	189	195	189
Senior	344	338	364	344	314	284	260
Non-Degree	190	160	155	245	186	251	423
Total Headcount	1509	1586	1558	1560	1414	1388	1494

FTE by Spring Semesters

Term	2010	2011	2012	2013	2014	2015	2016
Spring	1294	1340	1271	1245	1121	1127	1103

New First-Time Freshmen for Spring

Term	Enrolled Full-Time	Male	Female	Enrolled Part-Time	Male	Female	Total Enrolled
Spring 2011	41	26	15	29	26	3	70
Spring 2012	22	11	11	49	39	10	71
Spring 2013	30	16	14	5	1	4	35
Spring 2014	24	19	5	41	39	2	65
Spring 2015	25	20	5	5	3	2	30
Spring 2016	22	16	6	8	8	0	30

New First-Time Freshmen for Spring - Baccalaureate Program

Term	Enrolled Full-Time	Male	Female	Enrolled Part-Time	Male	Female	Total Enrolled
Spring 2011	13	7	6	12	10	2	25
Spring 2012	6	2	4	0	0	0	6
Spring 2013	14	7	7	1	0	1	15
Spring 2014	15	11	4	1	1	0	16
Spring 2015	13	10	3	0	0	0	13
Spring 2016	10	6	4	0	0	0	10

New First-Time Freshmen for Spring – Associate Program

Term	Enrolled Full-Time	Male	Female	Enrolled Part-Time	Male	Female	Total Enrolled
Spring 2011	28	19	9	17	16	1	45
Spring 2012	16	9	7	49	39	10	65
Spring 2013	16	9	7	4	1	3	20
Spring 2014	9	8	1	40	38	2	49
Spring 2015	12	10	2	4	3	1	16
Spring 2016	12	10	2	8	8	0	20

New Transfers for Spring

Term	Enrolled Full-Time	Male	Female	Enrolled Part-Time	Male	Female	Total Enrolled
Spring 2011	61	37	24	26	17	9	87
Spring 2012	39	24	15	30	26	4	69
Spring 2013	46	17	29	8	3	5	54
Spring 2014	35	16	19	21	15	6	56
Spring 2015	25	16	9	10	5	5	35
Spring 2016	29	17	12	8	5	3	37

New Transfers for Spring - Baccalaureate Program

Term	Enrolled Full-Time	Male	Female	Enrolled Part-Time	Male	Female	Total Enrolled
Spring 2011	40	20	20	16	8	8	56
Spring 2012	14	7	7	2	0	2	16
Spring 2013	35	15	20	3	0	3	38
Spring 2014	27	13	14	2	0	2	29
Spring 2015	19	13	6	1	0	1	20
Spring 2016	25	13	12	5	3	2	30

New Transfers for Spring - Associate Program

Term	Enrolled Full-Time	Male	Female	Enrolled Part-Time	Male	Female	Total Enrolled
Spring 2011	21	17	4	10	9	1	31
Spring 2012	25	17	8	23	22	1	48
Spring 2013	11	2	9	5	3	2	16
Spring 2014	8	3	5	19	15	4	27
Spring 2015	6	3	3	9	5	4	15
Spring 2016	4	4	0	3	2	1	7

Summer Enrollment by Class

Class	2010	2011	2012	2013	2014	2015	2016
Freshman	201	188	162	34	59	49	56
Sophomore	115	113	107	61	61	94	60
Junior	58	82	65	55	46	53	49
Senior	125	146	142	94	82	81	85
Non-Degree	43	18	80	32	109	74	103
Headcount Total	542	547	556	276	357	351	353

FTE by Summer Semesters

Term	2010	2011	2012	2013	2014	2015	2016
Summer	192	208	182	80	85	97	87

Retention of First-Time, Full-Time Students
Fall to Fall

	2010 to 2011	2011 to 2012	2012 to 2013	2013 to 2014	2014 to 2015	2015 to 2016
Bachelor's	70% ¹	65%	63%	65%	62%	70%
Associate's	48%	36%	47%	48%	42%	43%
Total	59%	52%	55%	59%	56%	62%

Retention of All Students
Fall to Fall

	2010 to 2011	2011 to 2012	2012 to 2013	2013 to 2014	2014 to 2015	2015 to 2016
Degree Seeking	50%	49%	49%	51%	52%	49%
Degree and Non-Degree Seeking	53%	48%	46%	44%	45%	45%

¹Reflects new admissions standards.

Full-Time Students - Baccalaureate Retention
Fall to Fall

	2010 - 2011	2011 - 2012	2012 - 2013	2013 - 2014	2014 - 2015	2015 - 2016
First-Time Freshmen	70% ¹	65%	63%	65%	62%	70%
All Freshmen	68%	66%	62%	62%	65%	68%
Sophomore	82%	76%	76%	81%	86%	83%
Junior	84%	81%	81%	74%	82%	80%

Full-Time Students - Associate Retention
Fall to Fall

	2010 - 2011	2011 - 2012	2012 - 2013	2013 - 2014	2014 - 2015	2015 - 2016
First-Time Freshmen	47%	36%	47%	48%	42%	43%
All Freshmen	46%	44%	50%	50%	50%	48%
Sophomore	69%	61%	61%	63%	57%	48%

¹Increased criteria – based associate degree placement.

Retention of First-Time, Full-Time Students
Fall to Spring

	2010 to 2011	2011 to 2012	2012 to 2013	2013 to 2014	2014 to 2015	2015 to 2016
Bachelor's	87%	83%	86%	84%	85%	89%
Associate's	75%	77%	75%	74%	74%	78%
Total	81%	80%	80%	79%	82%	86%

Retention of All Students
Fall to Spring

	2010 to 2011	2011 to 2012	2012 to 2013	2013 to 2014	2014 to 2015	2015 to 2016
Degree Seeking	75%	78%	79%	72%	68%	70%
Degree and Non-Degree Seeking	53%	68%	68%	59%	63%	63%

Full-Time Students - Baccalaureate Retention
Fall to Spring

	2010 - 2011	2011 - 2012	2012 - 2013	2013 - 2014	2014 - 2015	2015 - 2016
First-Time Freshmen	87%	83%	86%	84%	85%	89%
All Freshmen	83%	83%	84%	82%	84%	85%
Sophomore	90%	92%	88%	90%	95%	91%
Junior	90%	91%	92%	90%	96%	94%

Full-Time Students - Associate Retention
Fall to Spring

	2010 - 2011	2011 - 2012	2012 - 2013	2013 - 2014	2014 - 2015	2015 - 2016
First-Time Freshmen	75%	77%	75%	76%	74%	78%
All Freshmen	73%	74%	75%	70%	73%	78%
Sophomore	95%	77%	82%	83%	89%	68%

Retention of First-Time, Full-Time Students – Spring Admits
Spring to Fall

	2010 - 2010	2011 - 2011	2012 - 2012	2013 - 2013	2014 - 2014	2015 – 2015	2016 – 2016
Bachelor's	57%	54%	67%	36%	60%	66%	40%
Associate's	33%	57%	56%	69%	33%	66%	50%
Total	48%	56%	59%	53%	50%	66%	45%

Retention of All Students
Spring to Fall

	2010 - 2010	2011 - 2011	2012 - 2012	2013 -2013	2014 - 2014	2015 – 2015	2016 – 2016
Degree Seeking	69%	67%	64%	61%	65%	66%	63%
Degree and Non-Degree Seeking	65%	65%	60%	58%	59%	56%	56%

Full-Time Students - Baccalaureate Retention
Spring to Fall

	2010 - 2010	2011 - 2011	2012 - 2012	2013 - 2013	2014 - 2014	2015 – 2015	2016 – 2016
All Freshmen	69%	72%	69%	66%	71%	71%	71%
Sophomore	90%	88%	90%	84%	84%	87%	87%
Junior	85%	93%	79%	89%	85%	88%	91%

Full-Time Students - Associate Retention
Spring to Fall

	2010 - 2010	2011 - 2011	2012 - 2012	2013 - 2013	2014 - 2014	2015 – 2015	2016 – 2016
All Freshmen	61%	55%	52%	62%	56%	61%	55%
Sophomore	58%	70%	76%	78%	79%	59%	73%

Six-Year Graduation Rates

Started and Completed at Same Institution

	First-Time, Full-Time Students (Entering Year)						
	2004	2005	2006	2007	2008	2009	2010
Glenville State College Baccalaureate	28%	30%	31%	29%	28%	29%	44%
All WV State Colleges Baccalaureate Avg.	45%	45%	45%	44%	44%	45%	NA

Five-Year Graduation Rates

Started and Completed at Same Institution

	First-Time, Full-Time Students (Entering Year)						
	2005	2006	2007	2008	2009	2010	2011
Glenville State College	24%	26%	25%	23%	26%	39%	38%

Four-Year Graduation Rates

Started and Completed at Same Institution

	First-Time, Full-Time Students (Entering Year)						
	2006	2007	2008	2009	2010	2011	2012
Glenville State College	18%	13%	11%	16%	22%	24%	21%

Six-Year Graduation Rates
Baccalaureate Students Receiving Athletic-Related Financial Aid (Entering Year)

Entering Year	First-Time Full-Time Freshmen	Certificate or Associates Received	Bachelors Received	Percentage
Fall 2000	43	0	18	41.9%
Fall 2001	45	0	18	40.0%
Fall 2002	41	0	19	46.3%
Fall 2003	37	1	10	29.7%
Fall 2004	47	1	19	42.6%
Fall 2005	65	0	19	29.0%
Fall 2006	68	0	23	33.8%
Fall 2007	35	0	14	41.0%
Fall 2008	69	0	30	43.0%
Fall 2009	49	0	26	53.0%

Full-Time Enrollment by Degree Program

Term		Total
Fall 2010 ¹		1277
	Associate	324
	Baccalaureate	938
	Non-Degree	15
Fall 2011		1188
	Associate	290
	Baccalaureate	897
	Non-Degree	1
Fall 2012		1232
	Associate	331
	Baccalaureate	859
	Non-Degree	42
Fall 2013		1114
	Associate	265
	Baccalaureate	828
	Non-Degree	21
Fall 2014		1038
	Associate	201
	Baccalaureate	827
	Non-Degree	10
Fall 2015		1044
	Associate	162
	Baccalaureate	879
	Non-Degree	3
Fall 2016		1059
	Associate	128
	Baccalaureate	926
	Non-Degree	5

¹ Students with low test scores & GPA or deficient HS course work assigned to associate program.

Part-Time Enrollment by Degree Program

Term		Total
Fall 2010 ¹		551
	Associate	330
	Baccalaureate	47
	Non-Degree	174
Fall 2011		669
	Associate	307
	Baccalaureate	55
	Non-Degree	307
Fall 2012		666
	Associate	271
	Baccalaureate	50
	Non-Degree ²	345
Fall 2013		736
	Associate	311
	Baccalaureate	53
	Non-Degree	372
Fall 2014		764
	Associate	289
	Baccalaureate	61
	Non-Degree	414
Fall 2015		688
	Associate	148
	Baccalaureate	54
	Non-Degree	486
Fall 2016		582
	Associate	176
	Baccalaureate	117
	Non-Degree	289

¹ Adjusted ACT and SAT requirements limiting number of students admitted to a baccalaureate program.

² Includes more DMAPS students.

Enrollment by Academic Program

Program	Fall 2009	Fall 2010	Fall 2011	Fall 2012	Fall 2013	Fall 2014	Fall 2015	Fall 2016
Art (BA) (Start 2012)	NA	NA	NA	5	13	9	0	2
Graphics & Digital Media	NA	NA	NA	NA	NA	7	15	19
Studio Art	NA	NA	NA	NA	NA	1	4	6
Total	NA	NA	NA	5	13	17	19	27
Behavioral Sciences								
Behavioral Science (BSBS) (end 2001 as major)	NA	NA	NA	NA	NA	NA	NA	NA
Basic & Applied Psychology (end 2001)	1	NA	NA	NA	NA	NA	NA	NA
Criminal Justice (BSBS)	59	36	14	10	1	0	0	0
Psychology/Sociology	76	82	94	93	96	91	69	65
Total	136	118	108	103	97	91	69	65
Biology (BS)	43	55	51	41	33	41	37	34
Business Administration								
Accounting (BSBA)	27	19	25	34	33	28	26	21
Computer Science/Information Systems (BSBA)	14	15	23	24	27	25	30	18
Management (BSBA)	71	66	64	42	50	49	47	109
Marketing (BSBA)	19	23	20	14	10	13	13	25
Resort Area Management (BSBA)(start 2005)	4	5	4	4	6	8	5	3
Sport Management (BS) (start 2005)	52	57	49	65	71	60	49	46
Total	187	185	185	183	197	183	170	222
Business Management (BS) (2+2 Program)	4	5	5	2	0	0	1	1
Chemistry (BA)	15	18	8	6	6	8	16	9

Enrollment by Academic Program (continued)

Program	Fall 2009	Fall 2010	Fall 2011	Fall 2012	Fall 2013	Fall 2014	Fall 2015	Fall 2016
Criminal Justice (BS) (Start 2009)	41	53	77	85	95	117	153	156
Education								
Biological Science (9-adult) (BAED)	5	2	6	6	3	4	4	6
Business Ed Comprehensive (5-adult) (BAED)	5	5	7	7	4	2	1	2
Chemistry (9-adult) (BAED)	1	1	4	2	1	0	0	1
Chemistry & Physics (9-adult) (BAED)	1	2	2	3	3	3	2	1
Early Education (PreK-K) (BAED)	88	102	76	19 ¹	1	1	1	10
Elementary Education (K-6) (BAED)	8	7	7	85 ¹	102	93	90	92
English (5-9) (BAED)	13	16	6	1	0	0	0	1
English (5-adult) (BAED)	20	24	22	14	16	17	21	20
General Science (5-9) (BAED)	3	3	3	0	0	0	0	0
General Science (5-adult) (BAED)	4	5	5	3	1	1	1	5
Health (5-adult) (end 2010)	2	3	2	2	NA	NA	NA	NA
Health/Physical Education (PreK-adult)(start 2008)	12	24	33	25	22	13	10	17
Math (5-9) (General Math/Algebra) (BAED)	10	11	7	1	1	1	2	2
Math (5-adult) (BAED)	11	13	10	13	12	18	16	15
Multi-Categorical (K-6) (start 2006)	25	20	22	7	0	0	0	1
Multi-Categorical (Special Ed) (K-adult)(end 2006)	3	1	1	0	0	0	0	0
Music (non-specified) (BAED)(PreK-adult)	33	35	34	34	28	32	39	46
Physical Education (PreK-adult) (BAED)	51	26	13	4	1	0	0	0
Social Studies (5-adult) (BAED)	31	31	30	33	27	27	21	21
Social Studies (5-9) (BAED)	13	9	7	1	1	1	0	0
Spanish (5-adult) (BAED)(start 2008)	1	3	4	1	2	1	1	0
Total	340	343	301	261	225	214	209	240
English (BA)								
	17	16	22	16	14	14	9	11

Enrollment by Academic Program (continued)

Program	Fall 2009	Fall 2010	Fall 2011	Fall 2012	Fall 2013	Fall 2014	Fall 2015	Fall 2016
Health & Human Performance BS (Start Fall 2014)								
Athletic Conditioning/Coaching	NA	NA	NA	NA	NA	1	15	23
Exercise Science	NA	NA	NA	NA	NA	7	40	45
Health Promotions	NA	NA	NA	NA	NA	0	1	6
Nursing (2 year collab. WVU/Tech End Fall 2011)	24	34	0	0	0	0	0	0
Pre-Nursing (1 year intro/collab.Fall 2011)	NA	NA	27	26	18	14	12	19
Total	NA	NA	NA	NA	NA	8	68	93
History (BA) (renamed 2009)	19	12	6	2	0	0	0	0
History & Political Science (BA)(new code 2009)	NA	4	6	12	14	12	18	13
Interdisciplinary Studies (BA/BS)	0	0	1	1	1	1	0	1
Music (BA) (new 2007)	9	12	16	14	18	22	18	17
Natural Resource Management (BS)	97	110	111	114	123	127	124	132
Regents Bachelor of Arts (BORBA)	12	10	18	21	13	12	14	12
Undeclared	51	9 ¹	10	18	14	7	8	9

Enrollment by Academic Program (continued)

Associate Programs								
Criminal Justice (AS)	13	193 ²	146	132	251	203	52	36
Forest Technology (AS)	8	13	12	14	16	12	15	11
General Business (AA)	18	227 ²	247	226	158	181	158	121
General Studies (AA)	143	206	176	210	139	82	71	107
Land Surveying (AS)	13	15	16	19	10	12	13	29
Total	195	654	597	601	574	490	309	304
Non-Degree Seeking								
Total Headcount	541	190²	308	387	395	424	490	295
Total Headcount	1721	1828	1857	1898	1850	1802	1732	1641

¹ Classification changed to work better during the evaluation process for Degree Works.

² FCI (AA Business) and DMAP (AS Criminal Justice) students entered as degree seeking.

Graduation by Academic Programs

Program	2009-10	2010-11	2011-12	2012-13	2013-14	2014-15	2015-16
Art (BS)	NA	NA	NA	NA	2	3	3
Behavioral Science (BS)	0	0	0	1	0	0	0
Psychology/Sociology	14	16	18	24	29	17	16
Criminal Justice	13	13	9	3	1	0	0
Basic & Applied Psychology (<i>discontinued</i>)	2	0	0	0	0	0	0
Total	29	29	27	28	30	17	16
Biology (BS)	6	3	4	5	2	2	7
Business Administration (BSBA)							
Accounting (BSBA)	2	6	4	4	6	5	7
General Business (BSBA)	0	0	0	0	0	0	0
Computer and Information Systems (BSBA)	3	2	0	6	1	5	3
Management (BSBA)	8	11	13	7	12	7	8
Marketing (BSBA)	2	4	1	5	0	0	0
Resort Area Management	0	0	1	0	0	0	1
Sport Management (BA) (<i>discontinued 2001</i>)	1	4	0	0	0	0	0
Sport Management (BS) (<i>start 2005</i>)	0	0	6	9	5	6	5
Total	16	27	27	31	24	23	23
Business Mgmt (BS) (2+2 Program ended)	0	0	2	0	0	0	0
Chemistry (BA)	0	4	1	2	4	1	3
Criminal Justice (BS) (<i>Start Aug 2009</i>)	1	1	0	18	19	16	22
Education							
Biological Science (9-Adult)	1	0	1	1	0	1	0
Business Ed Comprehensive (5-Adult) (BAED)	2	2	0	1	1	1	0
Chemistry (9-12) (BAED)	0	0	0	0	0	0	0
Early Education (PreK-K) (BAED)	11	23	18	6	0	0	0

Graduation by Academic Programs (continued)

Program	2009-10	2010-11	2011-12	2012-13	2013-14	2014-15	2015-16
Education (continued)							
Elementary Education (BAED)	1	1	0	9	24	14	15
English (5-Adult) (BAED)	0	4	2	3	5	1	4
English (5-9) (BAED)	2	4	1	0	0	0	0
Chemistry & Physics (9-Adult)	0	0	0	0	1	0	1
General Science (5-Adult) (BAED)	0	0	1	2	0	0	1
General Science (5-9) (BAED)	0	1	0	0	0	0	0
Health/Physical Education (PreK-Adult)(BAED)	NA	0	1	4	4	1	2
Math (5-Adult) (BAED)	2	3	1	1	0	0	6
Math (5-9) (BAED)	3	2	1	1	1	0	1
Multi-Categorical (K-Adult) (BAED)(End 2006)	5	0	0	0	0	0	0
Multi-Categorical (K-6) (BAED)	1	4	2	1	0	0	0
Music (PreK-Adult) (BAED)	1	4	5	5	5	7	7
Physical Education (PreK-Adult) (BAED)	4	2	4	0	0	0	0
Social Studies (5-Adult) (BAED)	3	7	1	3	4	4	1
Social Studies (5-9) (BAED)	1	1	0	2	0	0	0
Spanish Education (BAED)(Start 2009)	0	0	1	0	0	0	0
Total	37	58	39	39	45	29	0
English (BA)	1	3	3	2	8	3	1
Health & Human Performance BS (Start Fall 2014)							
Athletic Conditioning/Coaching	NA	NA	NA	NA	NA	NA	2
Exercise Science	NA	NA	NA	NA	NA	NA	3
Health Promotions	NA	NA	NA	NA	NA	NA	0
Total	NA	NA	NA	NA	NA	NA	5
History (BA)	3	2	2	0	0	0	0
History Political Science (<i>new major code</i>)	1	1	1	1	5	1	7
Interdisciplinary Studies (BA/BS)	1	0	1	2	3	1	0

Graduation by Academic Programs (continued)

Program	2009-10	2010-11	2011-12	2012-13	2013-14	2014-15	2015-16
Music	3	1	5	2	3	4	6
Natural Resource Management (BS)	15	16	19	24	16	22	27
Regents Bachelor of Arts (BORBA)	20	16	22	20	15	14	18
Total	132	161	151	174	176	136	177
Associate Degrees							
General Business	8	18	27	7	12	16	30
Criminal Justice (AS)	2	0	12	10	11	22	18
Forest Technology (AS)	7	9	12	8	11	3	7
General Studies (AA)	2	1	3	1	5	6	5
Land Surveying (AS)	10	8	4	5	8	8	10
Total	29	36	58	31	47	55	70
Grand Total	161	197	209	205	223	191	247

Degrees Conferred

Degree Type	2009-10	2010-11	2011-12	2012-13	2013-14	2014-15	2015-16
Associate Degree	29	36	58	31	47	55	70
Baccalaureate Degree	132	161	151	174	176	136	177
Total	161	197	209	205	223	191	247

Student Profile

Fall 2010 – Fall 2016

	Fall 2010		Fall 2011		Fall 2012		Fall 2013		Fall 2014		Fall 2015		Fall 2016	
	Number	Percent	Number	Percent	Number	Percent	Number	Percent	Number	Percent	Number	Percent	Number	Percent
Students Total	1828	100%	1857	100%	1898	100%	1850	100%	1802	100%	1732	100%	1641	0%
Gender														
Male	1010	55%	1078	58%	1117	59%	1055	57%	1043	58%	956	55%	952	58%
Female	818	45%	779	42%	781	41%	795	43%	759	42%	776	45%	689	42%
Residence														
WV Resident	1624	89%	1630	88%	1607	85%	1582	86%	1560	87%	1471	85%	1404	86%
Non-Resident	204	11%	227	12%	291	15%	268	14%	242	13%	260	15%	237	14%
Attendance Status														
Full-Time	1277	70%	1188	64%	1232	65%	1114	60%	1038	58%	1044	60%	1059	65%
Part-Time	551	30%	667	36%	666	35%	736	40%	764	42%	688	40%	582	35%
Ethnicity														
White	1508	82%	1452	78%	1484	78%	1522	82%	1376	76%	1281	74%	1030	63%
African-Amer.	274	15%	302	16%	323	17%	250	14%	234	13%	258	15%	198	12%
Other*	46	3%	103	6%	91	5%	72	4%	192	11%	193	11%	413	25%
Age														
Under 25	1239	68%	1224	66%	1229	64%	1212	66%	1196	66%	1341	78%	1320	80%
25-29	148	8%	181	10%	209	11%	164	9%	189	11%	111	6%	112	7%
30-39	266	14%	263	14%	258	14%	230	12%	215	12%	157	9%	121	7%
40+	157	9%	189	10%	202	11%	243	13%	202	11%	123	7%	88	6%
Unknown	18	1%												

Enrollment by Gender – All Students

Term	Total Enrollment	Males	Females	Percentage Male	Percentage Female
Fall 2010	1828	1010	818	55%	45%
Fall 2011	1857	1078	779	58%	42%
Fall 2012	1898	1117	781	59%	41%
Fall 2013	1850	1055	795	57%	43%
Fall 2014	1802	1043	759	58%	42%
Fall 2015	1732	956	776	55%	45%
Fall 2016	1641	952	689	58%	42%

Enrollment by Gender – Excluding FCI & DMAPS

Term	Total Enrollment	Males	Females	Percentage Male	Percentage Female
Fall 2010	1449	718	731	50%	50%
Fall 2011	1413	733	680	52%	48%
Fall 2012	1455	771	684	53%	47%
Fall 2013	1389	718	671	52%	48%
Fall 2014	1304	668	636	51%	49%
Fall 2015	1376	677	699	49%	51%
Fall 2016	1311	671	640	51%	49%

Enrollment By State of Residence

Fall

Home of Residence	2010	2011	2012	2013	2014	2015	2016
Alabama	1	1	3	2	4	2	1
California	11	6	12	20	18	19	16
District of Columbia	14	30	41	33	20	22	11
Florida	20	13	15	10	16	21	20
Georgia	4	8	6	3	3	2	9
Illinois	8	6	9	5	4	3	3
Kentucky	3	1	6	5	1	3	1
Maryland	28	38	30	30	36	46	49
Michigan	4	5	3	2	1	6	7
North Carolina	4	5	3	6	2	3	3
New York	5	12	11	10	3	3	5
Ohio	36	50	47	49	23	32	18
Pennsylvania	4	2	6	5	7	10	13
Texas	2	3	2	0	2	2	2
Virginia	46	57	76	65	46	63	50
West Virginia	1624	1601	1607	1582	1560	1471	1404
All Other States	12	14	16	20	54	22	26
Foreign Countries	2	5	5	3	2	1	3
Total	1828	1857	1898	1850	1802	1731	1641

Enrollment by Ethnicity

Term	White Non-Hispanic	Black Non-Hispanic	Hispanic	Asian or Pacific Islander	American Indian or Alaskan Native	Non-Resident Aliens	Two or more	Minority	Unknown
Fall 2010	1508	274	26	6	10	0	0	17%	4
Fall 2011	1452	302	33	6	15	0	1	19%	48
Fall 2012	1480	323	32	4	13	11	0	20%	35
Fall 2013	1520	247	23	9	7	7	1	16%	36
Fall 2014	1375	232	24	3	0	6	17	16%	145
Fall 2015	1281	258	32	9	0	5	16	18%	131
Fall 2016	1230	231	27	18	0	5	16	17%	114

Percentage of Enrollment by Ethnicity

Term	White Non-Hispanic	Black Non-Hispanic	Hispanic	Asian or Pacific Islander	American Indian or Alaskan Native	Non-Resident Aliens	Two or more	% Minority	Unknown
Fall 2010	82%	15%	1%	.3%	.5%	0%	.2%	17%	.2%
Fall 2011	78%	16%	2%	.3%	.8%	0%	3%	19%	2.6%
Fall 2012	78%	17%	2%	.2%	.7%	.6%	2%	20%	1.8%
Fall 2013	82%	13%	1%	.5%	.4%	.4%	2%	16%	1.9%
Fall 2014	76%	13%	1%	.2%	0%	.3%	.9%	16%	8%
Fall 2015	74%	15%	2%	.4%	0%	.2%	.9%	18%	8%
Fall 2016	75%	14%	2%	1	0%	.3%	1	17%	7%

Average Age of All Students

Term	Age
Fall 2010	25
Fall 2011	26
Fall 2012	26
Fall 2013	27
Fall 2014	26
Fall 2015	23
Fall 2016	23

Students Age 25 and Older – All

Term	Undergraduate Enrollment	Undergraduates 25 Years or Older	Percent
Fall 2010	1828	589	32%
Fall 2011	1857	633	34%
Fall 2012	1898	669	35%
Fall 2013	1850	637	34%
Fall 2014	1802	606	34%
Fall 2015	1732	391	23%
Fall 2016	1641	353	22%

Students Age 25 and Older - All Freshmen

Term	Total Freshmen	Freshmen 25 Years or Older	% of Total Freshmen
Fall 2010	708	239	34%
Fall 2011	682	236	35%
Fall 2012	680	221	33%
Fall 2013	573	155	27%
Fall 2014	566	144	25%
Fall 2015	489	88	18%
Fall 2016	517	96	19%

Students Age 25 and Older Full-Time

Term	Full-Time Enrollment	Full-Time Students 25 Years or Older	Percent of Full-Time Students 25 Years or Older
Fall 2010	1277	264	21%
Fall 2011	1188	216	18%
Fall 2012	1232	250	20%
Fall 2013	1114	204	18%
Fall 2014	1038	176	17%
Fall 2015	1044	114	11%
Fall 2016	1059	103	10%

Students Age 25 and Older Part-Time

Term	Part-Time Enrollment	Part-Time Students 25 Years or Older	Percent of Part-Time Students 25 Years or Older
Fall 2010	551	325	59%
Fall 2011	669	417	62%
Fall 2012	666	419	63%
Fall 2013	736	433	59%
Fall 2014	764	430	56%
Fall 2015	688	277	40%
Fall 2016	582	250	43%

ACT Scores and SAT Scores - Fall
First-Time/Full-Time

			State College
Term	ACT Average	SAT Average	System ACT Average
Fall 2010	19.4	836	20.7
Associate	16.3	719	
Baccalaureate	21.6	949	
Fall 2011	19.0	800	20.6
Associate	16.7	745	
Baccalaureate	20.4	858	
Fall 2012	18.9	830	20.6
Associate	17	757	
Baccalaureate	20.5	914	
Fall 2013	18.6	847	20.6
Associate	16.7	733	
Baccalaureate	19.7	927	
Fall 2014	19.3	872	20.6
Associate	17.3	723	
Baccalaureate	19.9	908	
Fall 2015	19.6	853	20.8
Associate	17.8	745	
Baccalaureate	20.0	884	
Fall 2016	19.1	861	0
Associate	16.5	743	
Baccalaureate	19.7	937	

ACT Scores and SAT Scores – Spring Admits First-Time/Full-Time

Term	ACT Average	SAT Average
Spring 2011	18.3	1070
Associate	18	840
Baccalaureate	18.8	1300
Spring 2012	17	750
Associate	16.4	750
Baccalaureate	18.8	841
Spring 2013	18.8	841
Associate	16.0	770
Baccalaureate	20.5	870
Spring 2014	18.7	935
Associate	15	890
Baccalaureate	20	950
Spring 2015	16.4	835
Associate	15.6	875
Baccalaureate	17.3	815
Spring 2016	17.7	920
Associate	16.5	0
Baccalaureate	20	920

Grade Point Averages Semester¹

	2010-11		2011-12		2012-13		2013-14		2014-15		2015-16	
	Fall	Spring	Fall	Spring	Fall	Spring	Fall	Spring	Fall	Spring	Fall	Spring
All Students	2.29	2.33	2.45	2.70	2.42	2.23	2.16	2.21	2.28	2.55	2.38	2.53
All Freshmen	2.27	2.04	2.28	2.16	2.11	1.89	2.05	1.85	2.19	2.37	2.49	2.48
First-Time Full-Time Freshmen	2.49	2.41	2.41	2.72	2.24	2.94	2.61	2.48	2.68	2.06	2.68	2.08

Grade Point Averages Cumulative²

	2010-11		2011-12		2012-13		2013-14		2014-15		2015-16	
	Fall	Spring	Fall	Spring	Fall	Spring	Fall	Spring	Fall	Spring	Fall	Spring
All Students	2.55	2.61	2.69	2.86	2.38	2.46	2.31	2.45	2.40	2.66	2.49	2.64
All Freshmen	2.53	2.44	2.58	2.46	2.27	2.25	2.17	2.14	2.31	2.56	2.58	2.66
First-Time Full-Time Freshmen	2.49	2.47	2.44	2.76	2.43	2.87	2.61	2.48	2.72	2.08	2.70	2.08

¹ Semester GPA shows work completed for the semester.

² Cumulative GPA includes the total of all dual credit, transfer, and GSC work.

Enrollment in One or More Developmental Courses – Fall First-Time/Full-Time

Term	Freshmen	Developmental Courses	Percent in Developmental Courses
Fall 2010	313	189	60%
Fall 2011	284	179	63%
Fall 2012	339	208	61%
Fall 2013	280	190	68%
Fall 2014	264	163	62%
Fall 2015 ¹	287	105	37%
Fall 2016	320	86	27%

Enrollment in One or More Developmental Courses – Spring Admits First-Time/Full-Time

Term	Freshmen	Developmental Courses	Percent in Developmental Courses
Spring 2010	33	26	78%
Spring 2011	41	37	90%
Spring 2012	22	16	73%
Spring 2013	27	20	74%
Spring 2014	24	15	63%
Spring 2015	25	18	72%
Spring 2016 ¹	22	3	14%

¹ Started eliminating pure Developmental courses and moving towards lab enhanced courses.

West Virginia County Enrollment – Top 25

Fall 2016 with historical figures

County	2010	2011	2012	2013	2014	2015	2016
Incarcerated FCI/Hutt	181	188	175	103	139	135	183
Braxton	195	167	180	140	155	128	148
Gilmer	284	219	196	168	153	153	134
Nicholas	90	66	91	112	90	77	73
Raleigh	39	30	50	32	50	57	67
Webster	28	23	24	28	62	75	61
Lewis	73	70	72	80	84	75	57
Kanawha	52	51	52	68	48	47	49
Calhoun	99	86	61	83	46	44	48
Clay	38	35	72	52	42	43	40
Fayette	25	28	27	39	50	24	29
Harrison	32	44	37	52	36	24	28
Ritchie	43	80	71	107	82	46	28
Randolph	48	47	50	58	50	39	23
Berkeley	21	27	21	31	35	20	22
Grant	3	3	2	3	7	21	20
Jackson	21	20	23	21	18	15	20
Roane	54	56	52	51	31	26	20
Wyoming	10	8	5	6	11	36	20
Pocahontas	8	10	18	20	19	20	17
Boone	3	9	7	9	12	23	16
Doddridge	16	14	11	10	16	12	16
Logan	7	5	7	8	16	14	16
Ohio	2	4	3	4	2	22	16
Upshur	29	34	33	25	16	15	16
Greenbrier	13	14	10	14	14	16	14

West Virginia County Enrollment - All

County	2010	2011	2012	2013	2014	2015	2016
Barbour	9	9	12	15	16	8	3
Berkeley	21	27	21	31	35	20	22
Boone	3	9	7	9	12	23	16
Braxton	195	167	180	140	155	128	148
Brooke	1	1	4	2	3	11	7
Cabell	12	11	13	17	14	10	2
Calhoun	99	86	61	83	46	44	48
Clay	38	35	72	52	42	43	40
Doddridge	16	14	11	10	16	12	16
Fayette	25	28	27	39	50	24	29
Gilmer	284	219	196	168	153	290	213
Gilmer (FCI)	181	188	175	103	139	135	82
Grant	3	3	2	3	7	21	20
Greenbrier	13	14	10	14	14	16	14
Hampshire	6	6	8	1	6	9	11
Hancock	3	4	3	2	2	3	2
Hardy	2	1	5	2	2	1	8
Harrison	32	44	37	52	36	24	28
Jackson	21	20	23	21	18	15	20
Jefferson	7	7	7	6	13	8	7
Kanawha	52	51	52	68	48	47	49
Lewis	73	70	72	80	84	75	57
Lincoln	4	10	7	3	5	10	8
Logan	7	5	7	8	16	14	16
Marion	7	11	10	12	7	17	13
Marshall	6	10	11	7	8	14	15
Mason	5	17	16	14	17	5	9
McDowell	2	10	6	9	12	10	6

West Virginia County Enrollment (continued)

County	2010	2011	2012	2013	2014	2015	2016
Mercer	7	8	9	7	13	12	8
Mineral	3	1	2	5	4	3	2
Mingo	3	2	4	2	0	4	0
Monongalia	6	5	4	5	7	8	8
Monroe	3	5	3	3	4	2	4
Morgan	2	3	5	4	5	1	4
Nicholas	90	66	91	112	90	77	73
Ohio	2	4	3	4	2	22	16
Pendleton	6	10	18	14	14	11	9
Pleasants	13	7	4	8	8	4	4
Pocahontas	8	10	18	20	19	20	17
Preston	8	4	3	4	7	7	5
Putnam	8	10	13	15	9	9	12
Raleigh	39	30	50	32	50	57	67
Randolph	48	47	50	58	50	39	97
Ritchie	43	80	71	107	82	46	28
Roane	54	56	52	51	31	26	20
Summers	2	7	9	4	6	9	5
Taylor	4	8	10	12	12	9	9
Tucker	4	7	8	7	8	11	6
Tyler	2	5	4	6	5	12	15
Upshur	29	34	33	25	16	15	16
Wayne	4	5	4	5	6	6	9
Webster	28	23	24	28	62	75	61
Wetzel	5	8	5	8	8	9	6
Wirt	22	17	12	14	12	13	8
Wood	44	46	37	39	23	26	9
Wyoming	10	8	5	6	11	36	20

Residence Hall Occupancy Rates							
Spring 2016							
Hall Name	Room Type	# of rooms	Max # students	# occupants	Occupancy Rates	Male	Female
Goodwin	Single	192	192	173	90%	100	73
	Double	145	290	208	72%	124	84
	Total	337	482	381	79%	224	157
Pioneer Village	Single	152	152	111	73%	69	42
Sub Total	Single	344	344	284	83%	169	115
Sub Total	Double	145	290	208	72%	124	84
	Total	489	634	492	78%	335	226
Pickens	APT	6	12	6	50%	3	3
	Single	0	0	0	0%	0	0
	Double	12	24	2	17%	2	0
Grand Totals		507	658	500	76%	340	229

Calculated on the end of the 2nd week of class.

Residence Hall Occupancy Rates							
Fall 2016							
Hall Name	Room Type	# of rooms	Max # students	# occupants	Occupancy Rates	Male	Female
Goodwin	Single	192	192	186	97%	105	81
	Double	145	290	281	97%	161	114
	Total	337	482	467	97%	166	195
Pioneer Village	Single	152	152	139	92%	76	63
Sub Total	Single	344	344	325	95%	181	144
Sub Total	Double	145	290	275	95%	161	114
	Total	489	634	600	95%	342	258
Pickens	APT	6	12	4	33%	1	3
	Single	0	0	0	0	0	0
	Double	12	24	0	0	0	0
Grand Totals		496	670	604	90%	343	261

Calculated on the end of the 2nd week of class.

Student/Faculty Ratios¹

Term	FTE Students	FTE Faculty	FTE Student/Faculty Ratio
Fall 2009	1356	74	18:1
Fall 2010	1468	79	19:1
Fall 2011	1412	80	18:1
Fall 2012	1445	93 ²	16:1
Fall 2013	1330	83	16:1
Fall 2014	1279	81	16:1
Fall 2015	1251	72	17:1
Fall 2016	1263	69	18:1

¹ Ratios computed by Student FTE (student total credit hours produced / 15) ; Faculty FTE (full-time faculty + 1/3 of part-time faculty)

² Reflects an increase in the number of courses being delivered to Adult Learners and High School students (dual credit).

Full-Time Instructional Faculty by Academic Rank

	Professor		Associate Professor		Assistant Professor		Instructor		Lecturer, Graduate Assistant & Other		
Term	#	%	#	%	#	%	#	%	#	%	Total
Fall 2010	10	15%	15	22%	24	36%	18	27%	0	0%	67
Fall 2011	10	15%	18	26%	28	41%	12	18%	0	0%	68
Fall 2012	11	17%	17	25%	29	44%	9	14%	0	0%	66
Fall 2013	11	16%	16	23%	34	49%	8	12%	0	0%	69
Fall 2014	9	13%	20	30%	32	48%	6	9%	0	0%	67
Fall 2015	8	13%	17	27%	29	45%	8	13%	2	2%	64
Fall 2016	8	13%	21	35%	22	37%	8	13%	1	2%	60

Full-Time Instructional Faculty by Tenure Status

	Professor			Associate Professor			Assistant Professor			Instructor			Lecturer, Graduate Assistant & Other			Total		
Term	#	Tenured	%	#	Tenured	%	#	Tenured	%	#	Tenured	%	#	Tenured	%	#	Tenured	%
Fall 2010	10	10	100%	15	14	93%	24	1	4%	18	0	0%	0	0	0%	67	25	37%
Fall 2011	10	10	100%	18	17	94%	28	2	7%	12	0	0%	0	0	0%	68	29	43%
Fall 2012	11	11	100%	17	16	94%	29	3	10%	9	0	0%	0	0	0%	66	30	45%
Fall 2013	11	11	100%	16	15	94%	34	5	15%	8	0	0%	0	0	0%	69	31	45%
Fall 2014	9	9	100%	20	20	100%	32	4	13%	6	0	0%	0	0	0%	67	33	49%
Fall 2015	8	8	100%	17	17	100%	29	5	17%	8	0	0%	2	0	0%	64	34	54%
Fall 2016	8	8	100%	21	21	100%	22	5	23%	8	0	0%	1	0	0%	60	34	57%

Full-Time Instructional Faculty by Highest Degree Held

Term	Doctoral		Masters		First Professional		Bachelors		Total
	#	%	#	%	#	%	#	%	
Fall 2010	32	48%	32	48%	1	1%	2	3%	67
Fall 2011	37	54%	29	43%	1	1%	1	1%	68
Fall 2012	35	53%	30	45%	1	2%	0	0%	66
Fall 2013	36	52%	31	45%	2	3%	0	0%	69
Fall 2014	34	51%	31	46%	2	3%	0	0%	67
Fall 2015	32	50%	28	44%	1	1%	3	5%	64
Fall 2016	28	47%	28	47%	1	2%	3	5%	60

Part-Time Instructional Faculty by Highest Degree Held

Term	Doctoral		Masters		First Professional		Bachelors		Other		Total
	#	%	#	%	#	%	#	%	#	%	
Fall 2010	1	3%	25	69%	4	11%	4	11%	2	6%	36
Fall 2011	1	3%	24	67%	5	13%	6	17%	0	0%	36
Fall 2012 ¹	7	9%	62	76%	3	4%	9	11%	0	0%	81 ¹
Fall 2013	6	14%	28	67%	2	5%	5	12%	1	2%	42
Fall 2014	4	9%	31	76%	2	5%	2	5%	2	5%	41
Fall 2015	4	16%	16	64%	0	0	4	16%	1	4%	25
Fall 2016	3	11%	22	79%	0	0	2	7%	1	3%	28

¹ Reflects an increase in the number of courses being delivered to Adult Learners and High School students (dual credit).

Full-Time Instructional Faculty by Gender

Term	Male		Female		Total Number
	Number	Percentage	Number	Percentage	
Fall 2010	45	67%	22	33%	67
Fall 2011	46	68%	22	32%	68
Fall 2012	41	62%	25	38%	66
Fall 2013	42	61%	27	39%	69
Fall 2014	42	63%	25	37%	67
Fall 2015	43	67%	21	33%	64
Fall 2016	43	72%	17	28%	60

Full-Time Instructional Faculty by Ethnicity

	White, Non-Hispanic		Black, Non-Hispanic		Hispanic		Asian or Pacific Islander		American Indian or Alaskan Native			
Term	#	%	#	%	#	%	#	%	#	%	Total	% Minority
Fall 2010	63	94.3%	1	1.49%	1	1.49%	2	2.99%	0	0.0%	67	6.0%
Fall 2011	65	95.6%	1	1.47%	1	1.47%	1	1.47%	0	0.0%	68	4.0%
Fall 2012	63	95.5%	1	1.51%	1	1.51%	1	1.51%	0	0.0%	66	4.5%
Fall 2013	65	94.2%	0	0%	1	1.45%	3	4.35%	0	0.0%	69	5.8%
Fall 2014	62	92.5%	0	0%	1	1.49%	4	5.97%	0	0.0%	67	7.5%
Fall 2015	58	90.6%	0	0%	2	3.1%	4	6.3%	0	0%	64	9.4%
Fall 2016	56	93.3%	0	0%	2	3.3%	2	3.3%	0	0%	60	6.7%

Full-Time Instructional Faculty - Average Nine-Month Base Salary¹

	Professor		Associate Professor		Assistant Professor		Instructor		Lecturer, Graduate Assistant & Other			
Term	#	Salary	#	Salary	#	Salary	#	Salary	#	Salary	Total	Average Salary
Fall 2010	10	\$65,093	15	\$58,224	24	\$45,566	18	\$37,858	0	\$0	67	\$49,244
Fall 2011	10	\$69,249	18	\$60,610	28	\$48,367	12	\$42,015	0	\$0	68	\$53,558
Fall 2012	11	\$69,758	17	\$60,384	29	\$48,981	9	\$40,728	0	\$0	66	\$54,005
Fall 2013	11	\$68,381	16	\$61,692	34	\$48,789	8	\$39,846	0	\$0	69	\$53,867
Fall 2014	9	\$70,711	20	\$63,357	32	\$50,428	6	\$43,748	0	\$0	67	\$56,414
Fall 2015	8	\$70,649	17	\$61,479	29	\$49,848	8	\$42,268	2	\$41,252	64	\$54,059
Fall 2016	8	\$65,399	21	\$58,610	22	\$47,234	8	\$44,070	1	\$48,288	60	\$53,233

¹Data does not include pay for extra or extended assignments.

Semester Tuition and Fees 2009-2016

	2009-10	2010-11	2011-12	2012-13	2013-14	2014-15	2015-16	2016-17
Resident	\$2,444	\$2,444	\$2,676	\$2,930	\$3,192	\$3,348	\$3516	\$3672
Non-Resident	\$5,851	\$6,000	\$6,360	\$6,912	\$7,200	\$7,560	\$7944	\$8300
Metro Rate	\$4,032	\$4,116	\$4,416	\$4,812	\$5,196	\$5,460	\$5736	\$5944

Annual Tuition Comparisons Fall 2016

Institution Name	In-State Tuition	Out-of-State Tuition	Metro Rate	Room & Board
Bluefield State College	6408	12876	9288	0
Concord University	7080	15564	11564	8350
Fairmont State University	6952	14668	0	8776
Glenville State College	7344	16600	11888	10042
Shepherd University	7170	17482	0	10760
West Liberty University	7038	14394	12144	9120
West Virginia State University	6996	15572	12156	11008
Average	6998	15308	11408	9676

Source: College Web sites

Revenues Summarized¹

	2012-13	2013-14	2014-15	2015-16
Operating Revenues:				
Tuition and fees	\$7,899,218	\$7,645,450	\$7,826,976	\$9,254,917
Government Contracts and Grants	\$3,347,424	\$2,834,096	\$2,919,401	\$3,146,254
Private gifts, grants, and contracts	\$2,965,364	\$4,350,729	\$2,175,292	\$2,516,510
Sales and services of educational activities	\$710,560	\$709,756	\$523,336	\$286,364
Sales and services of auxiliary enterprises	\$6,482,958	\$6,122,893	\$6,441,727	\$6,753,247
Other sources	\$936,426	\$854,315	\$912,606	\$875,123
Payments made on behalf of College	0	0	\$241,860	\$241,576
Total Operating Revenues	\$22,341,950	\$22,517,239	\$20,799,338	\$22,832,415
Non-Operating Revenues:				
Government Appropriations	\$7,206,804	\$6,418,711	\$6,318,177	\$5,793,050
Federal PELL Grants	\$3,351,405	\$2,921,831	\$2,885,617	\$2,878,945
Income from investments	\$7,049	\$8,857	\$3,890	\$6,304
Total Non-Operating Revenues	\$10,565,258	\$9,349,399	9,449,544	\$8,919,875
Other Capital Proceeds from Commission	\$6,315,957	\$3,207,159	\$212,000	\$0
Capital Gifts (Private)	\$6,186,663	\$1,097,145	\$1,334,424	\$50,000
Capital Appropriations from State	\$4,000,000	0	0	0
Total revenues	\$49,409,828	\$36,170,942	\$31,795,306	\$31,802,290

¹See GSC Audited Financial Statements for Full Revenue Reports

Educational and General (E&G) Expenditures Summarized¹

	2012-13	2013-14	2014-15	2015-16
Operating Expenses:				
Instruction	\$6,938,531	\$6,625,178	\$5,854,459	\$6,172,938
Academic Support	\$1,015,399	\$1,004,275	\$1,169,702	\$1,038,372
Student Services	\$2,134,643	\$2,226,537	\$2,832,967	\$2,151,920
General Institutional Support	\$3,716,804	\$3,172,879	\$3,304,831	\$3,257,314
Operation and Maintenance of Plant	\$2,373,187	\$2,406,427	\$2,826,411	\$2,439,472
Scholarships and Aid	\$8,766,163	\$8,090,497	\$8,504,662	\$9,326,015
Auxiliary Enterprises	\$4,704,302	\$4,591,233	\$4,833,043	\$4,563,760
Depreciation	\$1,982,428	\$2,013,731	\$2,430,014	\$2,446,365
Fees Assessed by Policy Commission	\$76,705	\$81,304	\$73,794	\$69,062
Loan Cancellations and Write-Offs	0	0	\$1,369	\$361
Total Operating Expenses	\$31,708,162	\$30,212,061	\$31,831,252	\$31,465,579
Non-Operating Expenses:				
Interest on Indebtedness	\$1,697,499	\$1,735,131	\$1,683,723	\$1,683,723
Other	\$18,233	\$141,245	\$17,982	\$36,058
Total Non-Operating Expenses	\$1,715,732	\$1,876,376	\$1,701,705	\$1,675,138
Total Expenditures	\$33,423,894	\$32,088,437	\$33,532,957	\$33,140,717

¹See GSC Audited Financial Statements for Full Expenditure Reports

Financial Aid Summary
First-Time Full-Time Freshmen

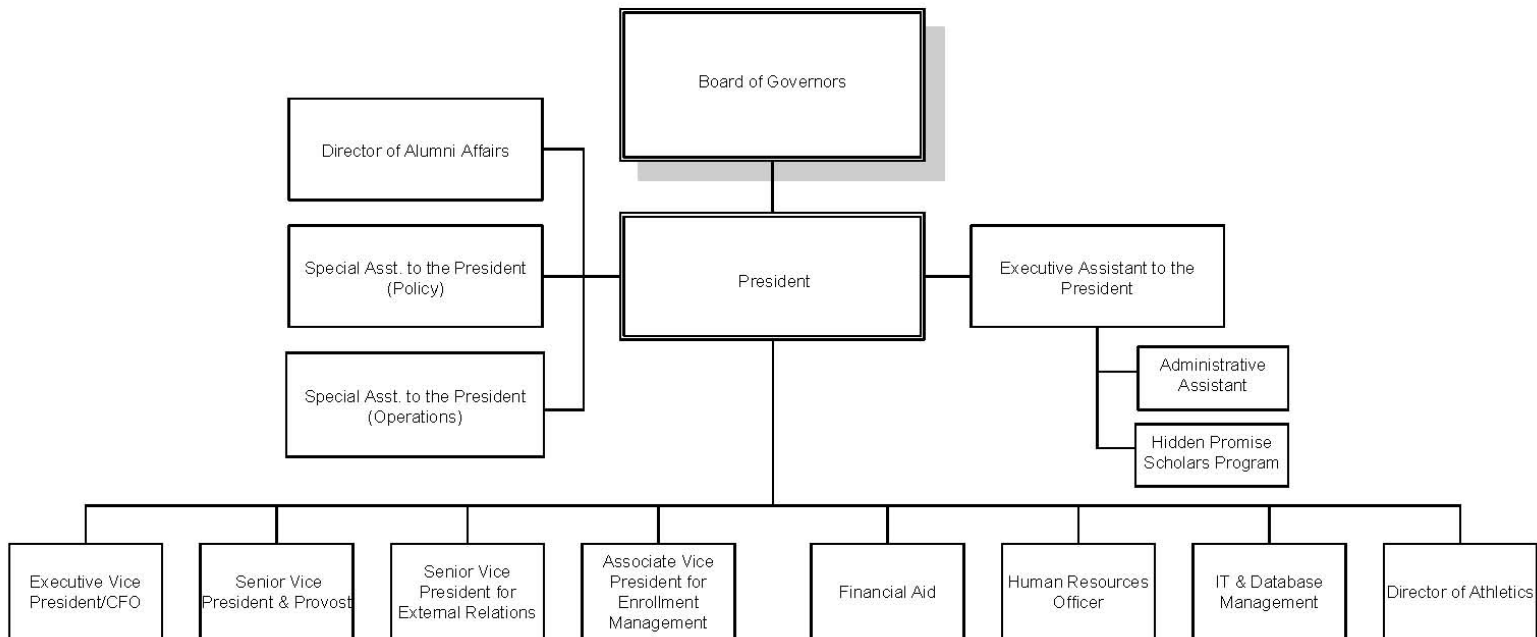
	2011-2012	2012-13	2013-14	2014-15	2015-16
Applied for Financial Aid	284	339	280	257	282
Determined to have Financial need	244	293	239	226	256
Awarded Financial Aid	241	290	235	226	253
Average Financial Package	\$12,235	\$12,781	\$11,763	\$13,468	\$14,532

**Financial Aid
Processed**

	2011-2012	2012-2013	2013-2014	2014-2015	2015-2016
All types of Aid	\$9,172,338	\$9,925,466	\$9,185,718	\$9,363,642	\$10,238,160
Loans Processed	\$7,496,207	\$7,314,086	\$6,210,546	\$5,668,041	\$6,056,709
Total	\$16,668,545	\$17,239,552	\$15,396,264	\$15,031,683	\$16,294,869



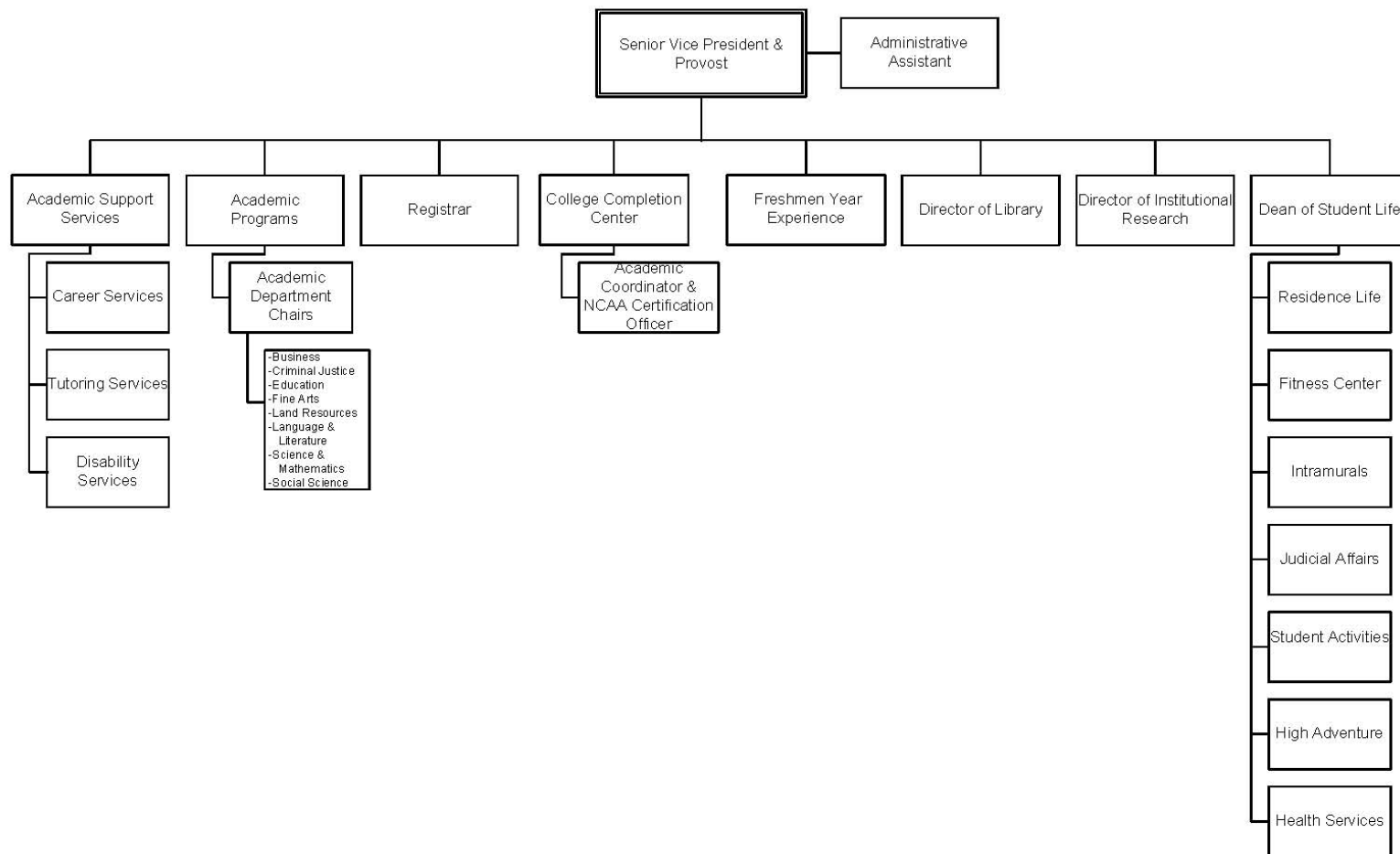
GLENVILLE STATE COLLEGE
ORGANIZATIONAL CHART
2014-2015



Updated 06/24/14



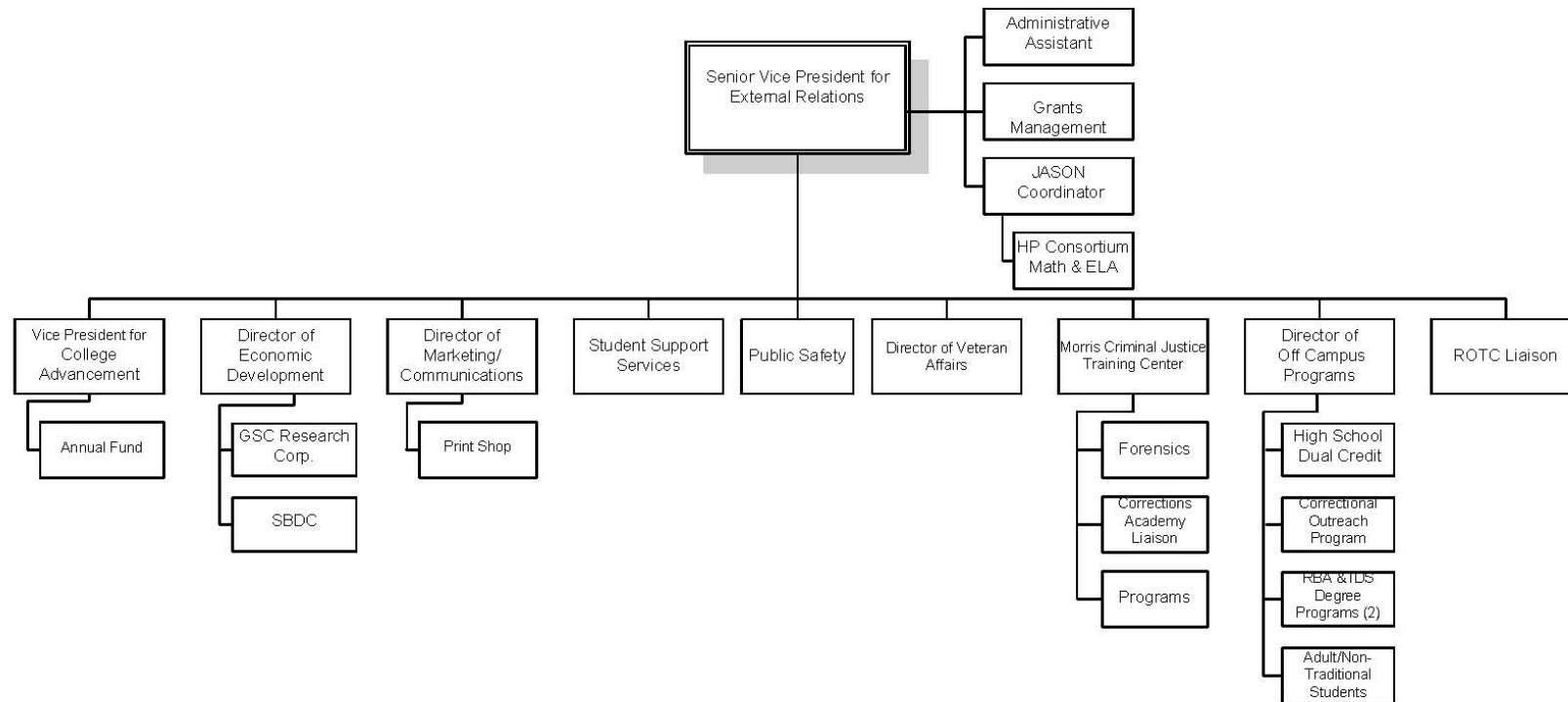
GLENVILLE STATE COLLEGE
ORGANIZATIONAL CHART
Senior Vice President & Provost
2014-2015



Updated 06/24/14



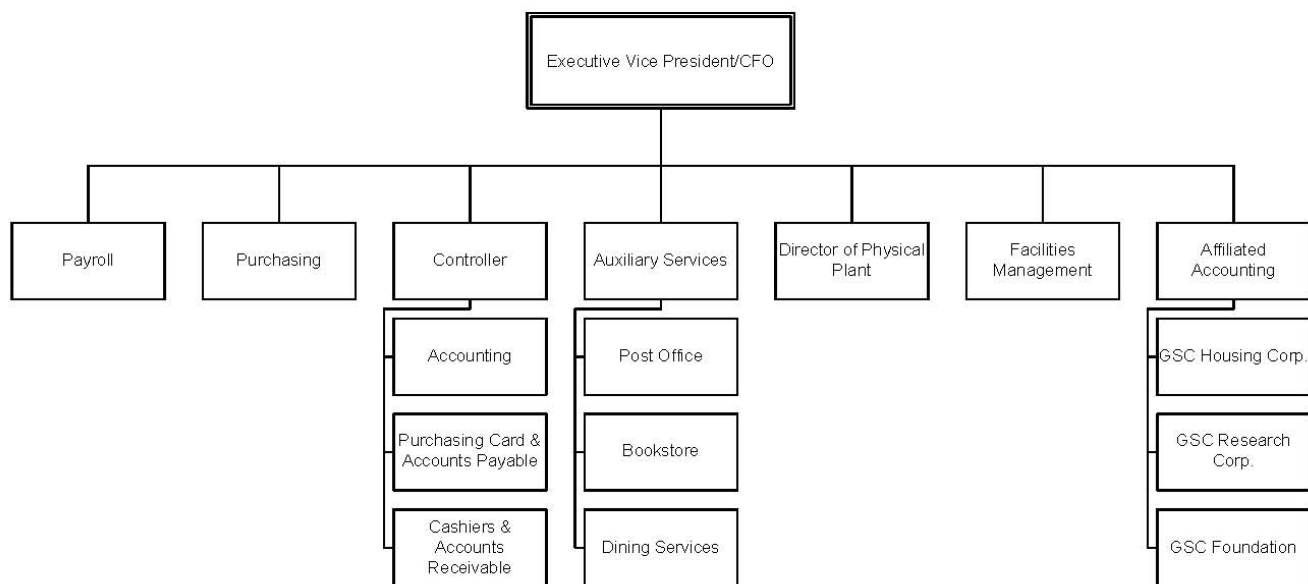
GLENVILLE STATE COLLEGE
ORGANIZATIONAL CHART
Senior Vice President for
External Relations
2014-2015



Updated 10/28/14



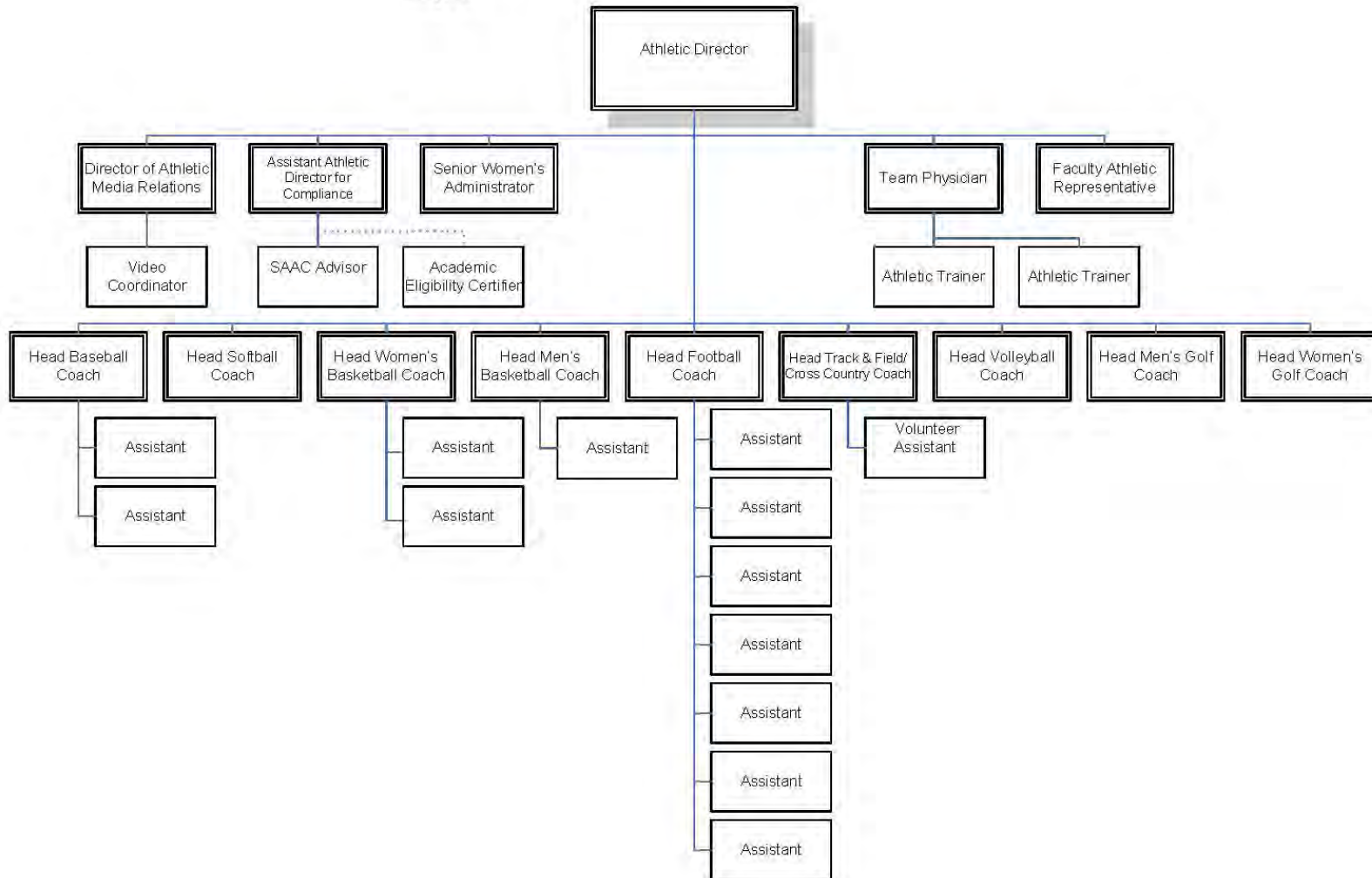
GLENVILLE STATE COLLEGE
ORGANIZATIONAL CHART
Executive Vice President of Finance/CFO
2014-2015



Updated 06/24/14



GLENVILLE STATE COLLEGE
ATHLETICS ORGANIZATIONAL CHART
2014-2015



Updated 10/27/14

Committee Membership – 2016-2017

Academic Appeals	Academic Policy	Assessment Committee	Athletic Committee
Ann Reed, Chair & Adm. Liaison	Megan Gibbons, Chair	Melody Wise, Chair	Marcal Lazenby, Chair /Adm. Liaison
Jason Barr	Ed Wood, Vice-Chair	David O'Dell, Vice Chair	Duane Chapman
Lloyd Bone	Duane Chapman	Ed Wood, Secretary	Mandy Frymier
Wenwen Du	Kevin Evans	Jason Barr	Dwight Heaster
Jonathan Minton	Dwight Heaster	Adam Black	Bob Hardman
Matthew Thiele	John Taylor	Tara Cosco	Shelly Ratliff
Leslie Ward	Kelly Treece	Kenneth Lang	Ann Reed
Avan McHenry (Alternate)	Jong-Hoon Yu	Kandas Queen	Michael Beck
Alison Witte (Alternate)	Rick Witte	Alison Witte	
	Milan Vavrek, Adm. Liaison	Milan Vavrek, Adm. Liaison	
	Bridget Carr	Neal Benson, IR	
	Joseph Neal	Reed Ratliff	

College Leadership Council	Commencement/Convocation	Curriculum Committee	Enrollment Management
Milan Vavrek, Chair & Adm. Liaison	Milan Vavrek, Chair	Lloyd Bone, Chair	Marty Carver, Chair & Adm Liaison
Denise Ellyson	Denise Ellyson	Wayne de Rosset, Vice-Chair	Neal Benson
Marcal Lazenby	Wayne de Rosset	Kevin Cain	Adrian Duelley
Mark Mills	Lois Miller	Shara Curry	Stephany Harper
Gary Morris	Deb Nagy	Art DeMatteo	Marlon Henry
David O'Dell	Tom Ratliff	Denise Ellyson	Marcal Lazenby
Reed Ratliff	Jim Spears	Rico Gazal	Jeremy Long
Jim Spears	Teresa Sterns	Cheryl McKinney	Jason Phares
Jim Tatman		Mark Mills	Shelly Ratliff
John Taylor		Gary Morris	Jim Spears
Jared Wilson		Brian Perkins	Chelsea Stickelman
Ed Wood		Sara Sawyer	Fred Walborn
		Marjorie Stewart	Colton Ring
		Alison Witte	
		Milan Vavrek, Adm. Liaison	
		Cody Moore	

Committee Membership – 2016-2017

Facilities Committee	Faculty Development	Faculty Senate	Faculty Senate –cont.
Tom Ratliff, Chair/Adm. Liaison	Marjorie Stewart, Chair	Jared Wilson, President	Marisha Lecea
Betsy Barr	Kelly Treece, Vice Chair	Larry Baker, VP	Cheryl McKinney
Jerry Burkhammer	Gary Arbogast	Gary Arbogast	Jonathan Minton
Bill Deel	Jason Barr	Jason Barr	Paul Peck
Bob Hardman	Tara Cosco	Duane Chapman	John Taylor
Debi Jenkins	Wenwen Du	Clay Chesser	Art Trimble
Debra Nagy	Mike Gherke	Chris Cosner	Joseph Wood
Jason Phares	Jeremy Keene	Tara Cosco	Jong-Hoon Yu
James Spears	Brian Perkins	Shara Curry	Milan Vavrek, Adm. Liaison
Dennis Wemm	Jong-Hoon Yu	Alan Daniel	
Milan Vavrek	Milan Vavrek, Adm. Liaison	Megan Gibbons	
Reed Ratliff			

Financial Aid Appeals	Homecoming	International/Diversity	Judicial Council
Stephany Harper, Chair & Adm. Liaison	Deb Nagy, Chair	Milan Vavrek, Chair & Adm. Liaison	Jerry Burkhammer, Chair
Lloyd Bone	Lloyd Bone	Megan Gibbons	Avan McHenry
Robin Cottrill	Jerry Burkhammer	Jerry Burkhammer	Jared Wilson
Ann Reed	Dustin Crutchfield	Wenwen Du	Melanie Anderson
John Taylor	Wayne de Rosset	Jodi Walters	Joel Neal
Dennis Wemm	Marcal Lazenby	Ed Wood	Reed Ratliff
	Jason Phares	Jong-Hoon Yu	Bonita Schreckengost
	T Ratliff /T Marks	Montana Carr	Jim Spears, Adm. Liaison
	Jodi Walters		

Committee Membership – 2016-2017

Library Advisory Committee	Promotion & Tenure	Retention Committee	Scholarship Committee
Gail Westbrook, Chair	Lloyd Bone	Milan Vavrek, Chair/Admin Liaison	Marty Carver, Chair/Admin Liaison
Shara Curry	Tara Cosco	Adam Black	David Bailey
Art DeMatteo	Gary Morris	Jerry Burkhammer	Teresa Dody
Jane Friedmann	John Taylor	Megan Darby	Stephany Harper
Rico Gazal		Mandy Frymier	Denny Pounds
Melissa Gish		Melissa Gish	
John McKinney		Jason Phares	
Art Trimble		Fred Walborn	
Leslie Ward		Bridget Carr	
Alison Witte			
Joe Wood			
Milan Vavrek, Adm. Liaison			
Bridget Carr			
Joe Neal			

Staff Council	Student Government Association	Student Life	
Jim Tatman, President	Jodi Walters, Adm. Liaison	Jim Spears, Chair, Adm. Liaison	
Rachel Adams	Reed Ratliff	Melanie Anderson	
Jenny Boggs	Cody Moore	Adam Black	
Adrian Duelley	Bridget Carr	Jerry Burkhammer	
Brittany Frymier	Landon Gumm	Heather Coleman	
Mindy Marsh	Cameron Woods	Avan McHenry	
Ann Reed	Justin Woods	Jodi Walters	
Sheri Skidmore	Brod Boswell	Ed Wood	
Trae Sprague	Joel Neal	Jared Wilson	
Rick Walsh	Michael Beck	Michael Beck	
Jodi Walters	Colton Ring	Ali Capobianco	
Gail Westbrook	Samuel Whitlock	Montana Carr	
Krystal Smith, Adm. Liaison	Kellie Kinsinger	Rachel Clutter	
	Ali Capobianco		
	Montana Carr		
	Nicole Williams		
	Jared Wilson, Advisor		
	Adam Black		

Committee Membership – 2016-2017

Ad hoc/Task Force Committees			
At Risk Student Advising	Default Management	Early Intervention Team	HLC Assurance Team
Milan Vavrek, Chair	Stephany Harper, Chair	Milan Vavrek, Chair	Milan Vavrek, Chair
David Bailey	Stacy Adkins	Jerry Burkhammer	Larry Baker
Clay Chesser	Neal Benson	Joe Evans	Neal Benson
Wenwen Du	David Bailey	Marcial Lazenby	Duane Chapman
Megan Gibbons	Jerry Burkhammer	Bill Lilly	Paul Peck
Gary Morris	Mawahna Gifford	Ann Reed	Melody Wise
Connie Stout O'Dell	Bill Lilly		
Fred Walborn	Ann Reed		
Jared Wilson	Milan Vavrek, Admin Liaison		
Alison Wittee			
Ed Wood			
Honors	Institutional Review Board	Online Course	Pioneer Showcase
Milan Vavrek, Chair	Alan Daniel, Chair	Milan Vavrek, Chair	Sara Sawyer, Chair
Jason Barr	Karen Kinney	Robin Cottrill	Clay Chesser
Shara Curry	Sara Sawyer	Art DeMatteo	Tara Cosco
Dwight Heaster	John Taylor	Jeremy Keene	Kevin Evans
Jonathan Minton	Tim Underwood	David Lewis	David Lewis
Gary Morris	Alison Witte	Annaliza Marks	Rico Gazal
Kelly Treece	Milan Vavrek, Adm. Liaison	Shelly Ratliff	Mike Gherke
Fred Walborn		Matthew Thiele	Marjorie Stewart
Alison Witte		Joseph Wood	Rick Witte
		Jong-Hoon Yu	

Committee Membership – 2016-2017

Textbook Affordability	Threat Assessment		
Milan Vavrek, Chair & Admin Liaison	Jessica Goodrich		
Melissa Gish	Marcia Lazenby		
David Lewis	Jason Phares		
Leisa Somerville	Tom Ratliff		
Gail Westbrook	Gary Smarr		
Alison Witte	Jim Spears		
	Krystal Smith		
	Ron Taylor		
	Tim Underwood		
	Milan Vavrek		

