



GLENVILLE
STATE COLLEGE

Fact Book

Fall 2017

Table of Contents

| Enrollment Trends | Page |
|--|------|
| Fall | |
| Fall Enrollment by Class | 1 |
| First-Time Freshmen | 2 |
| First-Time Freshmen – Baccalaureate Program | 3 |
| First-Time Freshmen – Associate Program | 4 |
| New Transfers | 5 |
| New Transfers – Baccalaureate Program Enrollment | 6 |
| New Transfers – Associate Program Enrollment | 6 |
| Total Headcount & FTE by Course Location | 7 |
| Total Headcount & FTE by Online Courses | 7 |
| Fall Enrollment Headcount Comparison | 8 |
| Fall Enrollment FTE Comparison | 8 |
| Applicants Accepted and Enrolled – All students | 9 |
| Applicants Accepted and Enrolled – First-Time Freshmen | 10 |
| Applicants Accepted and Enrolled – Transfer Students | 11 |
| Applicants Accepted and Enrolled – Re-Admit Students | 12 |
| Spring | |
| Spring Enrollment by Class | 13 |
| FTE by Spring Semesters | 13 |
| New First-Time Freshmen for Spring | 14 |
| New First-Time Freshmen for Spring – Baccalaureate Program | 15 |
| New First-Time Freshmen for Spring – Associate Program | 15 |
| New Transfers for Spring | 16 |
| New Transfers for Spring – Baccalaureate Program | 17 |
| New Transfers for Spring – Associate Program | 17 |
| Summer | |
| Summer Enrollment by Class | 18 |
| FTE by Summer Semesters | 18 |

Retention
Rates

Fall to Fall

| | |
|--|----|
| Retention of First-Time, Full-Time Students , Fall – Fall | 19 |
| Retention of All Students – Degree & Non-Degree Seeking, Fall – Fall | 19 |
| Full-Time Students Retention Baccalaureate Program, Fall – Fall | 20 |
| Full-Time Students Retention Associate Program, Fall – Fall | 20 |

Fall to Spring

| | |
|--|----|
| Retention of First-Time, Full-Time Students , Fall – Spring | 21 |
| Retention of All Students – Degree & Non-Degree Seeking, Fall – Spring | 21 |
| Full-Time Students Retention Baccalaureate Program, Fall – Spring | 22 |
| Full-Time Students Retention Associate Program, Fall – Spring | 22 |

Spring to Fall

| | |
|--|----|
| Retention of First-Time, Full-Time Students – Spring Admits, Spring – Fall | 23 |
| Retention of All Students – Degree & Non-Degree Seeking, Spring – Fall | 23 |
| Full-Time Students Retention Baccalaureate Program, Spring – Fall | 24 |
| Full-Time Students Retention Associate Program, Spring – Fall | 24 |

Graduation

| | |
|--|----|
| Six Year Graduation Rates (First-Time, Full-Time) | 25 |
| Five Year Graduation Rates (First-Time, Full-Time) | 25 |
| Four Year Graduation Rates (First-Time, Full-Time) | 25 |
| Six Year Graduation Rates (received Athletic Related Financial Aid) | 26 |

Program
Profile

| | |
|--|----|
| Full-Time Enrollment by Degree Program | 27 |
| Part-Time Enrollment by Degree Program | 28 |
| Enrollment by Academic Program | 29 |
| Graduation by Academic Program | 33 |
| Degrees Conferred | 36 |

Student Profile

| | |
|--|----|
| Student Profile Summary | 37 |
| Enrollment by Gender | 38 |
| Enrollment by State of Residence | 39 |
| Enrollment by Ethnicity | 40 |
| Average Age of All Students | 41 |
| Students Age 25 and Older – All | 41 |
| Students Age 25 and Older – All Freshmen | 42 |
| Students Age 25 and Older – Full-Time | 43 |
| Students Age 25 and Older – Part-Time | 43 |
| ACT Scores and SAT Scores – Fall | 44 |
| ACT Scores and SAT Scores – Spring Admits | 45 |
| Grade Point Averages – Semester | 46 |
| Grade Point Averages – Cumulative | 46 |
| Enrollment in One or More Developmental Courses - Fall | 47 |
| Enrollment in One or More Developmental Courses –Spring Admits | 47 |
| West Virginia County Enrollment – Top 25 by number Enrolled | 48 |
| West Virginia County Enrollment – by County | 49 |
| Residence Hall Occupancy Rates – Spring 2014 | 51 |
| Residence Hall Occupancy Rates – Fall 2014 | 52 |

Faculty Profile

| | |
|---|----|
| Student/Faculty Ratios | 53 |
| Full-Time Faculty by Academic Rank | 54 |
| Full-Time Faculty by Tenure Status | 54 |
| Full-Time Faculty by Highest Degree Held | 55 |
| Part-Time Faculty by Highest Degree Held | 56 |
| Full-Time Faculty by Gender | 57 |
| Full-Time Faculty by Ethnicity | 58 |
| Full Time Instructional Faculty – Average Nine-Month Salary | 59 |

| | |
|---|----|
| Financial | |
| Semester Tuition and Fees | 60 |
| Annual Tuition Comparisons | 60 |
| Revenue Summarized | 61 |
| Educational and General (E&G) Expenditures Summarized | 62 |
| Financial Aid Summary, First-Time Freshman | 63 |
| Financial Aid Processed | 63 |
| Organizational Charts | |
| Board of Governors, President, and Executive Staff | 64 |
| Committees | |
| Academic Appeals, Academic Policy, Assessment, Athletic, College Leadership, Commencement/Convocation, Curriculum, Diversity | 65 |
| Enrollment Management, Facilities, Faculty Development, Faculty Senate, Financial Aid Appeals, Homecoming, International, Institutional Review Board | 66 |
| Judicial Council, Library Advisory , Promotion & Tenure, Scholarship, Staff Council, Student Government Association, Student Life, Retention | 67 |

Fall reporting posted in October 2017 to

Fall Enrollment by Class

| Class | 2011 | 2012 | 2013 | 2014 | 2015 | 2016 | 2017 |
|-------------------------|-------------|-------------|-------------|-------------|-------------|-------------|-------------|
| Freshman | 682 | 680 | 573 | 566 | 489 | 517 | 510 |
| Sophomore | 264 | 225 | 220 | 247 | 252 | 233 | 239 |
| Junior | 226 | 199 | 185 | 183 | 156 | 186 | 183 |
| Senior | 308 | 334 | 287 | 256 | 260 | 232 | 248 |
| Non-Degree ¹ | 377 | 460 | 585 | 550 | 575 | 473 | 492 |
| Total Headcount | 1857 | 1898 | 1850 | 1802 | 1732 | 1641 | 1672 |

Percentage of Fall Enrollment by Class

| Class | 2011 | 2012 | 2013 | 2014 | 2015 | 2016 | 2017 |
|-------------------------|-------------|-------------|-------------|-------------|-------------|-------------|-------------|
| Freshman | 37% | 36% | 31% | 31% | 28% | 32% | 31% |
| Sophomore | 14% | 12% | 12% | 14% | 15% | 14% | 14% |
| Junior | 12% | 10% | 10% | 10% | 9% | 11% | 11% |
| Senior | 17% | 18% | 16% | 14% | 15% | 14% | 15% |
| Non-Degree ¹ | 20% | 24% | 31% | 31% | 28% | 29% | 29% |
| Total Headcount | 1857 | 1898 | 1850 | 1802 | 1732 | 1641 | 1672 |

¹ Students not seeking a degree and high school early entrance students.

First-Time Freshmen

| Term | Enrolled Full-Time | Male | Female | Enrolled Part-Time | Male | Female | Total Enrolled |
|-------------|---------------------------|-------------|---------------|---------------------------|-------------|---------------|-----------------------|
| Fall 2011 | 284 | 182 | 102 | 71 | 60 | 11 | 355 |
| Fall 2012 | 339 | 224 | 115 | 61 | 55 | 6 | 400 |
| Fall 2013 | 280 | 163 | 117 | 35 | 19 | 16 | 315 |
| Fall 2014 | 264 | 148 | 116 | 80 | 66 | 14 | 344 |
| Fall 2015 | 287 | 161 | 126 | 54 | 59 | 5 | 341 |
| Fall 2016 | 320 | 165 | 155 | 77 | 75 | 2 | 397 |
| Fall 2017 | 297 | 182 | 115 | 72 | 70 | 2 | 369 |

First-Time Freshmen - Baccalaureate Program

| Term | Enrolled Full-Time | Male | Female | Enrolled Part-Time | Male | Female | Total Enrolled |
|-------------|---------------------------|-------------|---------------|---------------------------|-------------|---------------|-----------------------|
| Fall 2011 | 155 | 91 | 64 | 2 | 2 | 0 | 157 |
| Fall 2012 | 169 | 112 | 57 | 1 | 0 | 1 | 170 |
| Fall 2013 | 175 | 96 | 79 | 1 | 1 | 0 | 176 |
| Fall 2014 | 195 | 107 | 88 | 5 | 1 | 4 | 200 |
| Fall 2015 | 206 | 112 | 94 | 3 | 1 | 2 | 209 |
| Fall 2016 | 252 | 120 | 132 | 36 | 36 | 0 | 288 |
| Fall 2017 | 239 | 139 | 100 | 3 | 3 | 0 | 242 |

First-Time Freshmen - Associate Program

| Term | Enrolled Full-Time | Male | Female | Enrolled Part-Time | Male | Female | Total Enrolled |
|-------------|---------------------------|-------------|---------------|---------------------------|-------------|---------------|-----------------------|
| Fall 2011 | 129 | 91 | 38 | 69 | 58 | 11 | 198 |
| Fall 2012 | 170 | 112 | 58 | 60 | 55 | 5 | 230 |
| Fall 2013 | 105 | 67 | 38 | 34 | 18 | 16 | 139 |
| Fall 2014 | 69 | 41 | 28 | 75 | 65 | 10 | 144 |
| Fall 2015 | 81 | 49 | 32 | 47 | 45 | 2 | 128 |
| Fall 2016 | 68 | 45 | 23 | 41 | 39 | 2 | 109 |
| Fall 2017 | 58 | 43 | 15 | 69 | 67 | 2 | 127 |

New Transfers for Fall

| Term | Enrolled Full-Time | Male | Female | Enrolled Part-Time | Male | Female | Total Enrolled |
|-------------|---------------------------|-------------|---------------|---------------------------|-------------|---------------|-----------------------|
| Fall 2011 | 101 | 60 | 41 | 51 | 29 | 22 | 152 |
| Fall 2012 | 92 | 54 | 38 | 28 | 24 | 4 | 120 |
| Fall 2013 | 58 | 36 | 22 | 97 | 55 | 42 | 155 |
| Fall 2014 | 80 | 49 | 31 | 63 | 41 | 22 | 143 |
| Fall 2015 | 70 | 45 | 25 | 32 | 29 | 3 | 102 |
| Fall 2016 | 68 | 36 | 32 | 62 | 57 | 5 | 130 |
| Fall 2017 | 70 | 40 | 30 | 30 | 29 | 1 | 100 |

New Transfers - Baccalaureate Program

| Term | Enrolled Full-Time | Male | Female | Enrolled Part-Time | Male | Female | Total Enrolled |
|-------------|---------------------------|-------------|---------------|---------------------------|-------------|---------------|-----------------------|
| Fall 2011 | 64 | 38 | 26 | 5 | 0 | 5 | 69 |
| Fall 2012 | 64 | 37 | 27 | 3 | 1 | 2 | 67 |
| Fall 2013 | 51 | 34 | 17 | 5 | 3 | 2 | 56 |
| Fall 2014 | 66 | 42 | 24 | 7 | 5 | 2 | 73 |
| Fall 2015 | 61 | 37 | 24 | 3 | 1 | 2 | 64 |
| Fall 2016 | 61 | 32 | 29 | 37 | 34 | 3 | 98 |
| Fall 2017 | 61 | 31 | 30 | 9 | 8 | 1 | 70 |

New Transfers - Associate Program

| Term | Enrolled Full-Time | Male | Female | Enrolled Part-Time | Male | Female | Total Enrolled |
|-------------|---------------------------|-------------|---------------|---------------------------|-------------|---------------|-----------------------|
| Fall 2011 | 37 | 22 | 15 | 46 | 29 | 17 | 83 |
| Fall 2012 | 28 | 17 | 11 | 25 | 23 | 2 | 53 |
| Fall 2013 | 7 | 2 | 5 | 92 | 52 | 40 | 99 |
| Fall 2014 | 14 | 7 | 7 | 56 | 36 | 20 | 70 |
| Fall 2015 | 8 | 7 | 1 | 28 | 27 | 1 | 36 |
| Fall 2016 | 7 | 4 | 3 | 24 | 23 | 1 | 31 |
| Fall 2017 | 9 | 9 | 0 | 21 | 21 | 0 | 30 |

Enrollment by Course Location

| Location | Fall 2013 | | Fall 2014 | | Fall 2015 | | Fall 2016 | | Fall 2017 | |
|------------------------|-----------|------|-----------|-----|-----------|------|-----------|------|-----------|-----|
| | Headcount | FTE | Headcount | FTE | Headcount | FTE | Headcount | FTE | Headcount | FTE |
| Glennville Campus | 1136 | 1051 | 1037 | 974 | 1217 | 1008 | 1182 | 1016 | 1030 | 915 |
| Incarcerated* | 107 | 58 | 139 | 69 | 138 | 56 | 226* | 75 | 198 | 104 |
| New River ¹ | 10 | 4 | 12 | 3 | 0 | 0 | 0 | 0 | 0 | 0 |
| Braxton Center | 46 | 18 | 84 | 24 | 72 | 17 | 35 | 9 | 0 | 0 |
| High Schools | 236 | 75 | 251 | 71 | 307 | 71 | 238 | 57 | 322 | 90 |

Enrollment by Online Courses

| Location | Fall 2013 | | Fall 2014 | | Fall 2015 | | Fall 2016 | | Fall 2017 | |
|--------------------|-----------|-----|-----------|-----|-----------|-----|-----------|-----|-----------|-----|
| | Headcount | FTE | Headcount | FTE | Headcount | FTE | Headcount | FTE | Headcount | FTE |
| Glennville Campus | 440 | 120 | 280 | 78 | 329 | 77 | 351 | 106 | 474 | 138 |
| DMAPS ² | 93 | 45 | 189 | 75 | 52 | 25 | 6 | 1 | 21 | 11 |
| Total | 533 | 165 | 469 | 153 | 381 | 102 | 357 | 107 | 495 | 149 |

*Addition of Huttonsville students

¹ 2 + 2 Education Program.

² West Virginia Department of Military Affairs and Public Safety

Fall Enrollment Headcount Comparison

| Institution Name | Fall 2011 | Fall 2012 | Fall 2013 | Fall 2014 | Fall 2015 | Fall 2016 | Fall 2017 |
|--------------------------------|-------------|-------------|-------------|-------------|-------------|-------------|-------------|
| Bluefield State College | 1929 | 1935 | 1747 | 1563 | 1482 | 1362 | 1379 |
| Concord University | 2797 | 2834 | 2767 | 2545 | 2498 | 2451 | 2194 |
| Fairmont State University | 4617 | 4451 | 4232 | 4034 | 4025 | 4049 | 3881 |
| Glenville State College | 1857 | 1898 | 1850 | 1802 | 1732 | 1641 | 1672 |
| Shepherd University | 4393 | 4326 | 4221 | 4041 | 3904 | 3779 | 3736 |
| West Liberty University | 2787 | 2804 | 2775 | 2693 | 2347 | 2310 | 2443 |
| West Virginia State University | 2827 | 2644 | 2677 | 2884 | 3221 | 3542 | 3877 |

Fall Enrollment FTE Comparison

| Institution Name | Fall 2013 | Fall 2014 | Fall 2015 | Fall 2016 | Fall 2017 |
|--------------------------------|-------------|-------------|-------------|-------------|-------------|
| Bluefield State College | 1556 | 1352 | 1302 | 1202 | 1189 |
| Concord University | 2539 | 2305 | 2260 | 2176 | 1988 |
| Fairmont State University | 3745 | 3565 | 3556 | 3626 | 3464 |
| Glenville State College | 1330 | 1279 | 1251 | 1263 | 1262 |
| Shepherd University | 3642 | 3458 | 3290 | 3094 | 3002 |
| West Liberty University | 2662 | 2513 | 2232 | 2190 | 2287 |
| West Virginia State University | 2158 | 2229 | 2301 | 2363 | 2460 |

Applicants Accepted and Enrolled All Students

| Term | Applicants | Male | Female | Number Accepted | Enrolled Full-Time | Male | Female | Enrolled Part-Time | Male | Female | Total Enrolled |
|-----------|------------|------|--------|------------------|--------------------|------|--------|--------------------|------|--------|----------------|
| Fall 2011 | 1588 | 877 | 711 | 1345 | 425 | 256 | 169 | 130 | 92 | 38 | 555 |
| Fall 2012 | 1568 | 888 | 680 | 1354 | 472 | 297 | 175 | 116 | 94 | 22 | 588 |
| Fall 2013 | 1443 | 725 | 718 | 1140 | 330 | 197 | 133 | 131 | 73 | 58 | 461 |
| Fall 2014 | 1640 | 833 | 807 | 717 ¹ | 366 | 210 | 156 | 166 | 114 | 52 | 532 |
| Fall 2015 | 1670 | 853 | 817 | 1201 | 375 | 215 | 160 | 98 | 80 | 18 | 473 |
| Fall 2016 | 1554 | 853 | 701 | 1145 | 404 | 211 | 193 | 142 | 134 | 8 | 546 |
| Fall 2017 | 2045 | 1022 | 1023 | 1277 | 384 | 231 | 153 | 129 | 124 | 5 | 513 |

Applicants Accepted and Enrolled Conversion Percentages

| Term | Accepted to Applicants | Full-Time to Accepted | Part-Time to Accepted | Enrollment to Accepted |
|------------------------|------------------------|-----------------------|-----------------------|------------------------|
| Fall 2011 | 85% | 31% | 10% | 41% |
| Fall 2012 | 86% | 35% | 8% | 43% |
| Fall 2013 | 79% | 29% | 11% | 40% |
| Fall 2014 ¹ | 44% | 51% | 23% | 74% |
| Fall 2015 | 72% | 31% | 8% | 39% |
| Fall 2016 | 74% | 35% | 12% | 48% |
| Fall 2017 | 62% | 30% | 10% | 40% |

¹ Applicants with incomplete applications not accepted.

Applicants Accepted and Enrolled First-Time Freshmen

| Term | Applicants | Male | Female | Number Accepted | Enrolled Full-Time | Male | Female | Enrolled Part-Time | Male | Female | Total Enrolled |
|------------------------|------------|------|--------|------------------|--------------------|------|--------|--------------------|------|--------|----------------|
| Fall 2011 | 1246 | 690 | 556 | 1023 | 284 | 182 | 102 | 71 | 60 | 11 | 355 |
| Fall 2012 | 1218 | 696 | 522 | 1024 | 339 | 224 | 115 | 61 | 55 | 6 | 400 |
| Fall 2013 | 1198 | 586 | 612 | 892 | 280 | 163 | 117 | 35 | 19 | 16 | 315 |
| Fall 2014 ¹ | 1292 | 644 | 648 | 602 ¹ | 264 | 148 | 116 | 80 | 66 | 14 | 344 |
| Fall 2015 | 1430 | 712 | 718 | 1036 | 287 | 161 | 126 | 54 | 49 | 5 | 341 |
| Fall 2016 | 1316 | 685 | 631 | 914 | 320 | 165 | 155 | 77 | 75 | 2 | 397 |
| Fall 2017 | 1774 | 858 | 916 | 1110 | 297 | 182 | 115 | 72 | 70 | 2 | 369 |

Applicants Accepted and Enrolled Conversion Percentages First-Time Freshmen

| Term | Accepted to Applicants | Full-Time to Accepted | Part-Time to Accepted | Enrollment to Accepted |
|------------------------|------------------------|-----------------------|-----------------------|------------------------|
| Fall 2011 | 82% | 28% | 7% | 35% |
| Fall 2012 | 84% | 33% | 6% | 39% |
| Fall 2013 | 74% | 31% | 4% | 35% |
| Fall 2014 ¹ | 47% | 44% | 13% | 57% |
| Fall 2015 | 72% | 28% | 5% | 33% |
| Fall 2016 | 69% | 35% | 8% | 43% |
| Fall 2017 | 63% | 27% | 6% | 33% |

¹ Applicants with incomplete applications not accepted.

Applicants Accepted and Enrolled New Transfer Students

| Term | Applicants | Male | Female | Number Accepted | Enrolled Full-Time | Male | Female | Enrolled Part-Time | Male | Female | Total Enrolled |
|------------------------|------------|------|--------|------------------|--------------------|------|--------|--------------------|------|--------|----------------|
| Fall 2011 | 255 | 147 | 108 | 236 | 101 | 60 | 41 | 51 | 29 | 22 | 152 |
| Fall 2012 | 247 | 140 | 107 | 227 | 92 | 54 | 38 | 28 | 24 | 4 | 120 |
| Fall 2013 | 240 | 135 | 105 | 224 | 58 | 36 | 22 | 97 | 55 | 42 | 155 |
| Fall 2014 ¹ | 264 | 151 | 113 | 147 ¹ | 80 | 49 | 31 | 63 | 41 | 22 | 143 |
| Fall 2015 | 208 | 130 | 78 | 133 | 70 | 45 | 25 | 32 | 29 | 3 | 102 |
| Fall 2016 | 219 | 156 | 63 | 215 | 68 | 36 | 32 | 62 | 57 | 5 | 130 |
| Fall 2017 | 220 | 133 | 87 | 119 | 70 | 40 | 30 | 30 | 29 | 1 | 100 |

Applicants Accepted and Enrolled Conversion Percentages New Transfer Students

| Term | Accepted to Applicants | Full-Time to Accepted | Part-Time to Accepted | Enrollment to Accepted |
|------------------------|------------------------|-----------------------|-----------------------|------------------------|
| Fall 2011 | 93% | 43% | 22% | 67% |
| Fall 2012 | 92% | 41% | 12% | 53% |
| Fall 2013 | 93% | 26% | 43% | 69% |
| Fall 2014 ² | 56% | 54% | 43% | 97% |
| Fall 2015 | 64% | 52% | 24% | 77% |
| Fall 2016 | 98% | 32% | 29% | 60% |
| Fall 2017 | 54% | 59% | 25% | 84% |

¹ Applicants with incomplete applications not accepted.

Applicants Accepted and Enrolled Re-Admit Students

| Term | Applicants | Male | Female | Number Accepted | Enrolled Full-Time | Male | Female | Enrolled Part-Time | Male | Female | Total Enrolled |
|------------------------|-------------------|-------------|---------------|------------------------|---------------------------|-------------|---------------|---------------------------|-------------|---------------|-----------------------|
| Fall 2011 | 87 | 40 | 47 | 86 | 40 | 14 | 26 | 8 | 3 | 5 | 48 |
| Fall 2012 | 103 | 52 | 51 | 103 | 41 | 19 | 22 | 27 | 15 | 12 | 68 |
| Fall 2013 | 79 | 39 | 40 | 75 | 19 | 8 | 11 | 32 | 19 | 13 | 51 |
| Fall 2014 ¹ | 74 | 33 | 41 | 48 | 22 | 13 | 9 | 23 | 7 | 16 | 45 |
| Fall 2015 | 32 | 11 | 21 | 32 | 18 | 9 | 9 | 14 | 2 | 12 | 32 |
| Fall 2016 | 19 | 12 | 7 | 19 | 16 | 10 | 6 | 3 | 2 | 1 | 19 |
| Fall 2017 | 51 | 31 | 20 | 48 | 17 | 9 | 8 | 27 | 25 | 2 | 44 |

¹ Applicants with incomplete applications not accepted.

Spring Enrollment by Class

| Class | 2011 | 2012 | 2013 | 2014 | 2015 | 2016 | 2017 |
|------------------------|-------------|-------------|-------------|-------------|-------------|-------------|-------------|
| Freshman | 611 | 544 | 518 | 468 | 349 | 398 | 326 |
| Sophomore | 264 | 273 | 253 | 257 | 306 | 224 | 274 |
| Junior | 213 | 222 | 200 | 189 | 195 | 189 | 201 |
| Senior | 338 | 364 | 344 | 314 | 284 | 260 | 354 |
| Non-Degree | 160 | 155 | 245 | 186 | 251 | 423 | 296 |
| Total Headcount | 1586 | 1558 | 1560 | 1414 | 1388 | 1494 | 1451 |

FTE by Spring Semesters

| Term | 2011 | 2012 | 2013 | 2014 | 2015 | 2016 | 2017 |
|---------------|-------------|-------------|-------------|-------------|-------------|-------------|-------------|
| Spring | 1340 | 1271 | 1245 | 1121 | 1127 | 1103 | 1101 |

New First-Time Freshmen for Spring

| Term | Enrolled Full-Time | Male | Female | Enrolled Part-Time | Male | Female | Total Enrolled |
|-------------|---------------------------|-------------|---------------|---------------------------|-------------|---------------|-----------------------|
| Spring 2012 | 22 | 11 | 11 | 49 | 39 | 10 | 71 |
| Spring 2013 | 30 | 16 | 14 | 5 | 1 | 4 | 35 |
| Spring 2014 | 24 | 19 | 5 | 41 | 39 | 2 | 65 |
| Spring 2015 | 25 | 20 | 5 | 5 | 3 | 2 | 30 |
| Spring 2016 | 22 | 16 | 6 | 8 | 8 | 0 | 30 |
| Spring 2017 | 16 | 12 | 4 | 13 | 12 | 1 | 29 |

New First-Time Freshmen for Spring - Baccalaureate Program

| Term | Enrolled Full-Time | Male | Female | Enrolled Part-Time | Male | Female | Total Enrolled |
|-------------|---------------------------|-------------|---------------|---------------------------|-------------|---------------|-----------------------|
| Spring 2012 | 6 | 2 | 4 | 0 | 0 | 0 | 6 |
| Spring 2013 | 14 | 7 | 7 | 1 | 0 | 1 | 15 |
| Spring 2014 | 15 | 11 | 4 | 1 | 1 | 0 | 16 |
| Spring 2015 | 13 | 10 | 3 | 0 | 0 | 0 | 13 |
| Spring 2016 | 10 | 6 | 4 | 0 | 0 | 0 | 10 |
| Spring 2017 | 15 | 11 | 4 | 3 | 3 | 0 | 18 |

New First-Time Freshmen for Spring – Associate Program

| Term | Enrolled Full-Time | Male | Female | Enrolled Part-Time | Male | Female | Total Enrolled |
|-------------|---------------------------|-------------|---------------|---------------------------|-------------|---------------|-----------------------|
| Spring 2012 | 16 | 9 | 7 | 49 | 39 | 10 | 65 |
| Spring 2013 | 16 | 9 | 7 | 4 | 1 | 3 | 20 |
| Spring 2014 | 9 | 8 | 1 | 40 | 38 | 2 | 49 |
| Spring 2015 | 12 | 10 | 2 | 4 | 3 | 1 | 16 |
| Spring 2016 | 12 | 10 | 2 | 8 | 8 | 0 | 20 |
| Spring 2017 | 1 | 1 | 0 | 10 | 9 | 1 | 11 |

New Transfers for Spring

| Term | Enrolled Full-Time | Male | Female | Enrolled Part-Time | Male | Female | Total Enrolled |
|-------------|---------------------------|-------------|---------------|---------------------------|-------------|---------------|-----------------------|
| Spring 2012 | 39 | 24 | 15 | 30 | 26 | 4 | 69 |
| Spring 2013 | 46 | 17 | 29 | 8 | 3 | 5 | 54 |
| Spring 2014 | 35 | 16 | 19 | 21 | 15 | 6 | 56 |
| Spring 2015 | 25 | 16 | 9 | 10 | 5 | 5 | 35 |
| Spring 2016 | 29 | 17 | 12 | 8 | 5 | 3 | 37 |
| Spring 2017 | 15 | 7 | 8 | 11 | 9 | 2 | 27 |

New Transfers for Spring - Baccalaureate Program

| Term | Enrolled Full-Time | Male | Female | Enrolled Part-Time | Male | Female | Total Enrolled |
|-------------|--------------------|------|--------|--------------------|------|--------|----------------|
| Spring 2012 | 14 | 7 | 7 | 2 | 0 | 2 | 16 |
| Spring 2013 | 35 | 15 | 20 | 3 | 0 | 3 | 38 |
| Spring 2014 | 27 | 13 | 14 | 2 | 0 | 2 | 29 |
| Spring 2015 | 19 | 13 | 6 | 1 | 0 | 1 | 20 |
| Spring 2016 | 25 | 13 | 12 | 5 | 3 | 2 | 30 |
| Spring 2017 | 14 | 6 | 8 | 6 | 4 | 2 | 20 |

New Transfers for Spring - Associate Program

| Term | Enrolled Full-Time | Male | Female | Enrolled Part-Time | Male | Female | Total Enrolled |
|-------------|--------------------|------|--------|--------------------|------|--------|----------------|
| Spring 2012 | 25 | 17 | 8 | 23 | 22 | 1 | 48 |
| Spring 2013 | 11 | 2 | 9 | 5 | 3 | 2 | 16 |
| Spring 2014 | 8 | 3 | 5 | 19 | 15 | 4 | 27 |
| Spring 2015 | 6 | 3 | 3 | 9 | 5 | 4 | 15 |
| Spring 2016 | 4 | 4 | 0 | 3 | 2 | 1 | 7 |
| Spring 2017 | 1 | 1 | 0 | 5 | 5 | 0 | 7 |

Summer Enrollment by Class

| Class | 2011 | 2012 | 2013 | 2014 | 2015 | 2016 | 2017 |
|------------------------|-------------|-------------|-------------|-------------|-------------|-------------|-------------|
| Freshman | 188 | 162 | 34 | 59 | 49 | 56 | 75 |
| Sophomore | 113 | 107 | 61 | 61 | 94 | 60 | 78 |
| Junior | 82 | 65 | 55 | 46 | 53 | 49 | 49 |
| Senior | 146 | 142 | 94 | 82 | 81 | 85 | 107 |
| Non-Degree | 18 | 80 | 32 | 109 | 74 | 103 | 70 |
| Headcount Total | 547 | 556 | 276 | 357 | 351 | 353 | 379 |

FTE by Summer Semesters

| Term | 2011 | 2012 | 2013 | 2014 | 2015 | 2016 | 2017 |
|-------------|-------------|-------------|-------------|-------------|-------------|-------------|-------------|
| Summer | 208 | 182 | 80 | 85 | 97 | 87 | 115 |

Retention of First-Time, Full-Time Students
Fall to Fall

| | 2011 to 2012 | 2012 to 2013 | 2013 to 2014 | 2014 to 2015 | 2015 to 2016 | 2016 to 2017 |
|--------------------|--------------|--------------|--------------|--------------|--------------|--------------|
| Bachelor's | 65% | 63% | 65% | 62% | 70% | 65% |
| Associate's | 36% | 47% | 48% | 42% | 43% | 41% |
| Total | 52% | 55% | 59% | 56% | 62% | 60% |

Retention of All Students
Fall to Fall

| | 2011 to 2012 | 2012 to 2013 | 2013 to 2014 | 2014 to 2015 | 2015 to 2016 | 2016 to 2017 |
|--------------------------------------|--------------|--------------|--------------|--------------|--------------|--------------|
| Degree Seeking | 49% | 49% | 51% | 52% | 49% | 51% |
| Degree and Non-Degree Seeking | 48% | 46% | 44% | 45% | 45% | 49% |

¹Reflects new admissions standards.

Full-Time Students - Baccalaureate Retention
Fall to Fall

| | 2011 - 2012 | 2012 - 2013 | 2013 - 2014 | 2014 - 2015 | 2015 - 2016 | 2016 - 2017 |
|----------------------------|-------------|-------------|-------------|-------------|-------------|-------------|
| First-Time Freshmen | 65% | 63% | 65% | 62% | 70% | 65% |
| All Freshmen | 66% | 62% | 62% | 65% | 68% | 63% |
| Sophomore | 76% | 76% | 81% | 86% | 83% | 83% |
| Junior | 81% | 81% | 74% | 82% | 80% | 81% |

Full-Time Students - Associate Retention
Fall to Fall

| | 2011 - 2012 | 2012 - 2013 | 2013 - 2014 | 2014 - 2015 | 2015 - 2016 | 2016 - 2017 |
|----------------------------|-------------|-------------|-------------|-------------|-------------|-------------|
| First-Time Freshmen | 36% | 47% | 48% | 42% | 43% | 41% |
| All Freshmen | 44% | 50% | 50% | 50% | 48% | 40% |
| Sophomore | 61% | 61% | 63% | 57% | 48% | 43% |

¹Increased criteria – based associate degree placement.

Retention of First-Time, Full-Time Students
Fall to Spring

| | 2011 to 2012 | 2012 to 2013 | 2013 to 2014 | 2014 to 2015 | 2015 to 2016 | 2016 to 2017 |
|--------------------|--------------|--------------|--------------|--------------|--------------|--------------|
| Bachelor's | 83% | 86% | 84% | 85% | 89% | 85% |
| Associate's | 77% | 75% | 74% | 74% | 78% | 63% |
| Total | 80% | 80% | 79% | 82% | 86% | 80% |

Retention of All Students
Fall to Spring

| | 2011 to 2012 | 2012 to 2013 | 2013 to 2014 | 2014 to 2015 | 2015 to 2016 | 2016 to 2017 |
|--------------------------------------|--------------|--------------|--------------|--------------|--------------|--------------|
| Degree Seeking | 78% | 79% | 72% | 68% | 70% | 71% |
| Degree and Non-Degree Seeking | 68% | 68% | 59% | 63% | 63% | 66% |

Full-Time Students - Baccalaureate Retention
Fall to Spring

| | 2011 - 2012 | 2012 - 2013 | 2013 - 2014 | 2014 - 2015 | 2015 - 2016 | 2016 - 2017 |
|----------------------------|-------------|-------------|-------------|-------------|-------------|-------------|
| First-Time Freshmen | 83% | 86% | 84% | 85% | 89% | 85% |
| All Freshmen | 83% | 84% | 82% | 84% | 85% | 82% |
| Sophomore | 92% | 88% | 90% | 95% | 91% | 91% |
| Junior | 91% | 92% | 90% | 96% | 94% | 96% |

Full-Time Students - Associate Retention
Fall to Spring

| | 2011 - 2012 | 2012 - 2013 | 2013 - 2014 | 2014 - 2015 | 2015 - 2016 | 2016 - 2017 |
|----------------------------|-------------|-------------|-------------|-------------|-------------|-------------|
| First-Time Freshmen | 77% | 75% | 76% | 74% | 78% | 41% |
| All Freshmen | 74% | 75% | 70% | 73% | 78% | 40% |
| Sophomore | 77% | 82% | 83% | 89% | 68% | 43% |

Retention of First-Time, Full-Time Students – Spring Admits
Spring to Fall

| | 2011 - 2011 | 2012 - 2012 | 2013 - 2013 | 2014 - 2014 | 2015 – 2015 | 2016 – 2016 | 2017 – 2017 |
|--------------------|-------------|-------------|-------------|-------------|-------------|-------------|-------------|
| Bachelor's | 54% | 67% | 36% | 60% | 66% | 40% | 53% |
| Associate's | 57% | 56% | 69% | 33% | 66% | 50% | 0% |
| Total | 56% | 59% | 53% | 50% | 66% | 45% | 50% |

Retention of All Students
Spring to Fall

| | 2011 - 2011 | 2012 - 2012 | 2013 -2013 | 2014 - 2014 | 2015 – 2015 | 2016 – 2016 | 2017 – 2017 |
|--------------------------------------|-------------|-------------|------------|-------------|-------------|-------------|-------------|
| Degree Seeking | 67% | 64% | 61% | 65% | 66% | 63% | 58% |
| Degree and Non-Degree Seeking | 65% | 60% | 58% | 59% | 56% | 56% | 55% |

Full-Time Students - Baccalaureate Retention
Spring to Fall

| | 2011 - 2011 | 2012 - 2012 | 2013 - 2013 | 2014 - 2014 | 2015 - 2015 | 2016 - 2016 | 2017 - 2017 |
|---------------------|-------------|-------------|-------------|-------------|-------------|-------------|-------------|
| All Freshmen | 72% | 69% | 66% | 71% | 71% | 71% | 57% |
| Sophomore | 88% | 90% | 84% | 84% | 87% | 87% | 85% |
| Junior | 93% | 79% | 89% | 85% | 88% | 91% | 90% |

Full-Time Students - Associate Retention
Spring to Fall

| | 2011 - 2011 | 2012 - 2012 | 2013 - 2013 | 2014 - 2014 | 2015 - 2015 | 2016 - 2016 | 2017 - 2017 |
|---------------------|-------------|-------------|-------------|-------------|-------------|-------------|-------------|
| All Freshmen | 55% | 52% | 62% | 56% | 61% | 55% | 31% |
| Sophomore | 70% | 76% | 78% | 79% | 59% | 73% | 50% |

Six-Year Graduation Rates
Started and Completed at Same Institution

| First-Time, Full-Time Students (Entering Year) | | | | | | | |
|--|------|------|------|------|------|------|------|
| | 2005 | 2006 | 2007 | 2008 | 2009 | 2010 | 2011 |
| Glennville State College Baccalaureate | 30% | 31% | 29% | 28% | 29% | 44% | 43% |
| All WV State Colleges Baccalaureate Avg. | 45% | 45% | 44% | 44% | 45% | 46% | NA |

Five-Year Graduation Rates
Started and Completed at Same Institution

| First-Time, Full-Time Students (Entering Year) | | | | | | | |
|--|------|------|------|------|------|------|------|
| | 2006 | 2007 | 2008 | 2009 | 2010 | 2011 | 2012 |
| Glennville State College | 26% | 25% | 23% | 26% | 39% | 38% | 32% |

Four-Year Graduation Rates
Started and Completed at Same Institution

| First-Time, Full-Time Students (Entering Year) | | | | | | | |
|--|------|------|------|------|------|------|------|
| | 2007 | 2008 | 2009 | 2010 | 2011 | 2012 | 2013 |
| Glennville State College | 13% | 11% | 16% | 22% | 24% | 21% | 25% |

Six-Year Graduation Rates
Baccalaureate Students Receiving Athletic-Related Financial Aid (Entering Year)

| Entering Year | First-Time Full-Time Freshmen | Certificate or Associates Received | Bachelors Received | Percentage |
|----------------------|--------------------------------------|---|---------------------------|-------------------|
| Fall 2001 | 45 | 0 | 18 | 40.0% |
| Fall 2002 | 41 | 0 | 19 | 46.3% |
| Fall 2003 | 37 | 1 | 10 | 29.7% |
| Fall 2004 | 47 | 1 | 19 | 42.6% |
| Fall 2005 | 65 | 0 | 19 | 29.0% |
| Fall 2006 | 68 | 0 | 23 | 33.8% |
| Fall 2007 | 35 | 0 | 14 | 41.0% |
| Fall 2008 | 69 | 0 | 30 | 43.0% |
| Fall 2009 | 49 | 0 | 26 | 53.0% |
| Fall 2010 | 46 | 0 | 27 | 58% |

Full-Time Enrollment by Degree Program

| Term | | Total |
|-----------|----------------------|-------|
| Fall 2011 | | 1188 |
| | <i>Associate</i> | 290 |
| | <i>Baccalaureate</i> | 897 |
| | <i>Non-Degree</i> | 1 |
| Fall 2012 | | 1232 |
| | <i>Associate</i> | 331 |
| | <i>Baccalaureate</i> | 859 |
| | <i>Non-Degree</i> | 42 |
| Fall 2013 | | 1114 |
| | <i>Associate</i> | 265 |
| | <i>Baccalaureate</i> | 828 |
| | <i>Non-Degree</i> | 21 |
| Fall 2014 | | 1038 |
| | <i>Associate</i> | 201 |
| | <i>Baccalaureate</i> | 827 |
| | <i>Non-Degree</i> | 10 |
| Fall 2015 | | 1044 |
| | <i>Associate</i> | 162 |
| | <i>Baccalaureate</i> | 879 |
| | <i>Non-Degree</i> | 3 |
| Fall 2016 | | 1059 |
| | <i>Associate</i> | 128 |
| | <i>Baccalaureate</i> | 926 |
| | <i>Non-Degree</i> | 5 |
| Fall 2017 | | 1045 |
| | <i>Associate</i> | 106 |
| | <i>Baccalaureate</i> | 931 |
| | <i>Non-Degree</i> | 8 |

Part-Time Enrollment by Degree Program

| Term | | Total |
|-----------|-------------------------------|-------|
| Fall 2011 | | 669 |
| | <i>Associate</i> | 307 |
| | <i>Baccalaureate</i> | 55 |
| | <i>Non-Degree</i> | 307 |
| Fall 2012 | | 666 |
| | <i>Associate</i> | 271 |
| | <i>Baccalaureate</i> | 50 |
| | <i>Non-Degree</i> | 345 |
| Fall 2013 | | 736 |
| | <i>Associate</i> | 311 |
| | <i>Baccalaureate</i> | 53 |
| | <i>Non-Degree²</i> | 372 |
| Fall 2014 | | 764 |
| | <i>Associate</i> | 289 |
| | <i>Baccalaureate</i> | 61 |
| | <i>Non-Degree</i> | 414 |
| Fall 2015 | | 688 |
| | <i>Associate</i> | 148 |
| | <i>Baccalaureate</i> | 54 |
| | <i>Non-Degree</i> | 486 |
| Fall 2016 | | 582 |
| | <i>Associate</i> | 176 |
| | <i>Baccalaureate</i> | 117 |
| | <i>Non-Degree</i> | 289 |
| Fall 2017 | | 627 |
| | <i>Associate</i> | 194 |
| | <i>Baccalaureate</i> | 109 |
| | <i>Non-Degree</i> | 324 |

¹ Adjusted ACT and SAT requirements limiting number of students admitted to a baccalaureate program.

² Includes more DMAPS students.

Enrollment by Academic Program

| Program | Fall 2010 | Fall 2011 | Fall 2012 | Fall 2013 | Fall 2014 | Fall 2015 | Fall 2016 | Fall 2017 |
|---|-----------|-----------|-----------|-----------|-----------|-----------|-----------|-----------|
| Art (BA) (Start 2012) | NA | NA | 5 | 13 | 9 | 0 | 2 | 1 |
| Graphics & Digital Media | NA | NA | NA | NA | 7 | 15 | 19 | 19 |
| Studio Art | NA | NA | NA | NA | 1 | 4 | 6 | 7 |
| Total | NA | NA | 5 | 13 | 17 | 19 | 27 | 27 |
| Behavioral Sciences | | | | | | | | |
| Criminal Justice (BSBS) | 36 | 14 | 10 | 1 | 0 | 0 | 0 | 0 |
| Psychology/Sociology | 82 | 94 | 93 | 96 | 91 | 69 | 65 | 66 |
| Total | 118 | 108 | 103 | 97 | 91 | 69 | 65 | 66 |
| Biology (BS) | | | | | | | | |
| | 55 | 51 | 41 | 33 | 41 | 37 | 34 | 44 |
| Business Administration | | | | | | | | |
| Accounting (BSBA) | 19 | 25 | 34 | 33 | 28 | 26 | 21 | 23 |
| Computer Science/Information Systems (BSBA) | 15 | 23 | 24 | 27 | 25 | 30 | 18 | 30 |
| Management (BSBA) | 66 | 64 | 42 | 50 | 49 | 47 | 109 | 119 |
| Marketing (BSBA) | 23 | 20 | 14 | 10 | 13 | 13 | 25 | 23 |
| Resort Area Management (BSBA)(start 2005) | 5 | 4 | 4 | 6 | 8 | 5 | 3 | 1 |
| Sport Management (BS) (start 2005) | 57 | 49 | 65 | 71 | 60 | 49 | 46 | 42 |
| Total | 185 | 185 | 183 | 197 | 183 | 170 | 222 | 238 |
| Business Management (BS) (2+2 Program) | | | | | | | | |
| | 5 | 5 | 2 | 0 | 0 | 1 | 1 | 0 |
| Chemistry (BA) | | | | | | | | |
| | 18 | 8 | 6 | 6 | 8 | 16 | 9 | 11 |

Enrollment by Academic Program (continued)

| Program | Fall 2010 | Fall 2011 | Fall 2012 | Fall 2013 | Fall 2014 | Fall 2015 | Fall 2016 | Fall 2017 |
|--|--------------|--------------|-----------------|--------------|--------------|--------------|--------------|--------------|
| Criminal Justice (BS) (Start 2009) | 53 | 77 | 85 | 95 | 117 | 153 | 156 | 145 |
| Education | | | | | | | | |
| Biological Science (9-adult) (BAED) | 2 | 6 | 6 | 3 | 4 | 4 | 6 | 2 |
| Business Ed Comprehensive (5-adult) (BAED) | 5 | 7 | 7 | 4 | 2 | 1 | 2 | 0 |
| Chemistry (9-adult) (BAED) | 1 | 4 | 2 | 1 | 0 | 0 | 1 | 2 |
| Chemistry & Physics (9-adult) (BAED) | 2 | 2 | 3 | 3 | 3 | 2 | 1 | 1 |
| Early Education (PreK-K) (BAED) | 102 | 76 | 19 ¹ | 1 | 1 | 1 | 10 | 3 |
| Elementary Education (K-6) (BAED) | 7 | 7 | 85 ¹ | 102 | 93 | 90 | 92 | 87 |
| English (5-9) (BAED) | 16 | 6 | 1 | 0 | 0 | 0 | 1 | 0 |
| English (5-adult) (BAED) | 24 | 22 | 14 | 16 | 17 | 21 | 20 | 23 |
| General Science (5-9) (BAED) | 3 | 3 | 0 | 0 | 0 | 0 | 0 | 0 |
| General Science (5-adult) (BAED) | 5 | 5 | 3 | 1 | 1 | 1 | 5 | 4 |
| Health (5-adult) (end 2010) | 3 | 2 | 2 | NA | NA | NA | NA | NA |
| Health/Physical Education (PreK-adult)(start 2008) | 24 | 33 | 25 | 22 | 13 | 10 | 17 | 17 |
| Math (5-9) (General Math/Algebra) (BAED) | 11 | 7 | 1 | 1 | 1 | 2 | 2 | 0 |
| Math (5-adult) (BAED) | 13 | 10 | 13 | 12 | 18 | 16 | 15 | 14 |
| Multi-Categorical (K-6) (start 2006) | 20 | 22 | 7 | 0 | 0 | 0 | 1 | 1 |
| Multi-Categorical (Special Ed) (K-adult)(end 2006) | 1 | 1 | 0 | 0 | 0 | 0 | 0 | 0 |
| Music (non-specified) (BAED)(PreK-adult) | 35 | 34 | 34 | 28 | 32 | 39 | 46 | 40 |
| Physical Education (PreK-adult) (BAED) | 26 | 13 | 4 | 1 | 0 | 0 | 0 | 0 |
| Social Studies (5-adult) (BAED) | 31 | 30 | 33 | 27 | 27 | 21 | 21 | 27 |
| Social Studies (5-9) (BAED) | 9 | 7 | 1 | 1 | 1 | 0 | 0 | 0 |
| Spanish (5-adult) (BAED)(start 2008) | 3 | 4 | 1 | 2 | 1 | 1 | 0 | 0 |
| Total | 343 | 301 | 261 | 225 | 214 | 209 | 240 | 221 |
| English (BA) | | | | | | | | |
| | 16 | 22 | 16 | 14 | 14 | 9 | 11 | 11 |

Enrollment by Academic Program (continued)

| Program | Fall 2010 | Fall 2011 | Fall 2012 | Fall 2013 | Fall 2014 | Fall 2015 | Fall 2016 | Fall 2017 |
|--|----------------|-----------|-----------|-----------|-----------|-----------|-----------|-----------|
| Health & Human Performance BS (Start Fall 2014) | | | | | | | | |
| Athletic Conditioning/Coaching | NA | NA | NA | NA | 1 | 15 | 23 | 23 |
| Exercise Science | NA | NA | NA | NA | 7 | 40 | 45 | 57 |
| Health Promotions | NA | NA | NA | NA | 0 | 1 | 6 | 15 |
| Nursing (2 year collab. WVU/Tech End Fall 2011) | 34 | 0 | 0 | 0 | 0 | 0 | 0 | 0 |
| Pre-Nursing (1 year intro/collab.Fall 2011) | NA | 27 | 26 | 18 | 14 | 12 | 19 | 16 |
| Total | NA | NA | NA | NA | 8 | 68 | 93 | 111 |
| History (BA) (renamed 2009) | | | | | | | | |
| History (BA) (renamed 2009) | 12 | 6 | 2 | 0 | 0 | 0 | 0 | 0 |
| History & Political Science (BA)(new code 2009) | | | | | | | | |
| History & Political Science (BA)(new code 2009) | 4 | 6 | 12 | 14 | 12 | 18 | 13 | 15 |
| Interdisciplinary Studies (BA/BS) | | | | | | | | |
| Interdisciplinary Studies (BA/BS) | 0 | 1 | 1 | 1 | 1 | 0 | 1 | 0 |
| Music (BA) (new 2007) | | | | | | | | |
| Music (BA) (new 2007) | 12 | 16 | 14 | 18 | 22 | 18 | 17 | 27 |
| Natural Resource Management (BS) | | | | | | | | |
| Natural Resource Management (BS) | 110 | 111 | 114 | 123 | 127 | 124 | 132 | 103 |
| Regents Bachelor of Arts (BORBA) | | | | | | | | |
| Regents Bachelor of Arts (BORBA) | 10 | 18 | 21 | 13 | 12 | 14 | 12 | 9 |
| Undeclared | | | | | | | | |
| Undeclared | 9 ¹ | 10 | 18 | 14 | 7 | 8 | 9 | 11 |

Enrollment by Academic Program (continued)

| | | | | | | | | |
|---------------------------|------------------|-------------|-------------|-------------|-------------|-------------|-------------|-------------|
| Associate Programs | | | | | | | | |
| Criminal Justice (AS) | 193 ² | 146 | 132 | 251 | 203 | 52 | 36 | 33 |
| Forest Technology (AS) | 13 | 12 | 14 | 16 | 12 | 15 | 11 | 9 |
| General Business (AA) | 227 ² | 247 | 226 | 158 | 181 | 158 | 121 | 131 |
| General Studies (AA) | 206 | 176 | 210 | 139 | 82 | 71 | 107 | 117 |
| Land Surveying (AS) | 15 | 16 | 19 | 10 | 12 | 13 | 29 | 10 |
| Total | 654 | 597 | 601 | 574 | 490 | 309 | 304 | 300 |
| Non-Degree Seeking | | | | | | | | |
| | 190 ² | 308 | 387 | 395 | 424 | 490 | 295 | 332 |
| Total Headcount | 1828 | 1857 | 1898 | 1850 | 1802 | 1732 | 1641 | 1672 |

¹ Classification changed to work better during the evaluation process for Degree Works.

² FCI (AA Business) and DMAP (AS Criminal Justice) students entered as degree seeking.

Graduation by Academic Programs

| Program | 2010-11 | 2011-12 | 2012-13 | 2013-14 | 2014-15 | 2015-16 | 2016-17 |
|--|---------|---------|---------|---------|---------|---------|---------|
| Art (BS) | NA | NA | NA | 2 | 3 | 3 | 2 |
| Graphics & Digital Media | | | | | | | |
| Studio Art | | | | | | | |
| Behavioral Science (BS) | 0 | 0 | 1 | 0 | 0 | 0 | 0 |
| Psychology/Sociology | 16 | 18 | 24 | 29 | 17 | 16 | 18 |
| Criminal Justice | 13 | 9 | 3 | 1 | 0 | 0 | 0 |
| Total | 29 | 27 | 28 | 30 | 17 | 16 | 18 |
| Biology (BS) | 3 | 4 | 5 | 2 | 2 | 7 | 2 |
| Business Administration (BSBA) | | | | | | | |
| Accounting (BSBA) | 6 | 4 | 4 | 6 | 5 | 7 | 2 |
| General Business (BSBA) | 0 | 0 | 0 | 0 | 0 | 0 | 0 |
| Computer and Information Systems (BSBA) | 2 | 0 | 6 | 1 | 5 | 3 | 1 |
| Management (BSBA) | 11 | 13 | 7 | 12 | 7 | 8 | 11 |
| Marketing (BSBA) | 4 | 1 | 5 | 0 | 0 | 0 | 7 |
| Resort Area Management | 0 | 1 | 0 | 0 | 0 | 1 | 2 |
| Sport Management (BA) (<i>discontinued 2001</i>) | 4 | 0 | 0 | 0 | 0 | 0 | 0 |
| Sport Management (BS) (<i>start 2005</i>) | 0 | 6 | 9 | 5 | 6 | 5 | 2 |
| Total | 27 | 27 | 31 | 24 | 23 | 23 | 25 |
| Business Mgmt (BS) (2+2 Program ended) | 0 | 2 | 0 | 0 | 0 | 0 | 0 |
| Chemistry (BA) | 4 | 1 | 2 | 4 | 1 | 3 | 3 |
| Criminal Justice (BS) (<i>Start Aug 2009</i>) | 1 | 0 | 18 | 19 | 16 | 22 | 35 |
| Education | | | | | | | |
| Biological Science (9-Adult) | 0 | 1 | 1 | 0 | 1 | 0 | 0 |
| Business Ed Comprehensive (5-Adult) (BAED) | 2 | 0 | 1 | 1 | 1 | 0 | 1 |
| Chemistry (9-12) (BAED) | 0 | 0 | 0 | 0 | 0 | 0 | 0 |
| Early Education (PreK-K) (BAED) | 23 | 18 | 6 | 0 | 0 | 0 | 0 |

Graduation by Academic Programs (continued)

| Program | 2010-11 | 2011-12 | 2012-13 | 2013-14 | 2014-15 | 2015-16 | 2016-17 |
|--|-----------|-----------|-----------|-----------|-----------|-----------|-----------|
| Education (continued) | | | | | | | |
| Elementary Education (BAED) | 1 | 0 | 9 | 24 | 14 | 15 | 12 |
| English (5-Adult) (BAED) | 4 | 2 | 3 | 5 | 1 | 4 | 2 |
| English (5-9) (BAED) | 4 | 1 | 0 | 0 | 0 | 0 | 0 |
| Chemistry & Physics (9-Adult) | 0 | 0 | 0 | 1 | 0 | 1 | 0 |
| General Science (5-Adult) (BAED) | 0 | 1 | 2 | 0 | 0 | 1 | 0 |
| General Science (5-9) (BAED) | 1 | 0 | 0 | 0 | 0 | 0 | 1 |
| Health/Physical Education (PreK-Adult)(BAED) | 0 | 1 | 4 | 4 | 1 | 2 | 0 |
| Math (5-Adult) (BAED) | 3 | 1 | 1 | 0 | 0 | 6 | 1 |
| Math (5-9) (BAED) | 2 | 1 | 1 | 1 | 0 | 1 | 0 |
| Multi-Categorical (K-Adult) (BAED)(End 2006) | 0 | 0 | 0 | 0 | 0 | 0 | 0 |
| Multi-Categorical (K-6) (BAED) | 4 | 2 | 1 | 0 | 0 | 0 | 0 |
| Music (PreK-Adult) (BAED) | 4 | 5 | 5 | 5 | 7 | 7 | 6 |
| Physical Education (PreK-Adult) (BAED) | 2 | 4 | 0 | 0 | 0 | 0 | 0 |
| Social Studies (5-Adult) (BAED) | 7 | 1 | 3 | 4 | 4 | 1 | 3 |
| Social Studies (5-9) (BAED) | 1 | 0 | 2 | 0 | 0 | 0 | 0 |
| Spanish Education (BAED)(Start 2009) | 0 | 1 | 0 | 0 | 0 | 0 | 0 |
| Total | 58 | 39 | 39 | 45 | 29 | 38 | 26 |
| English (BA) | 3 | 3 | 2 | 8 | 3 | 1 | 0 |
| Health & Human Performance BS (Start Fall 2014) | | | | | | | |
| Athletic Conditioning/Coaching | NA | NA | NA | NA | NA | 2 | 3 |
| Exercise Science | NA | NA | NA | NA | NA | 3 | 5 |
| Health Promotions | NA | NA | NA | NA | NA | 0 | 1 |
| Total | NA | NA | NA | NA | NA | 5 | 9 |
| History (BA) | 2 | 2 | 0 | 0 | 0 | 0 | 0 |
| History Political Science (new major code) | 1 | 1 | 1 | 5 | 1 | 7 | 3 |
| Interdisciplinary Studies (BA/BS) | 0 | 1 | 2 | 3 | 1 | 0 | 1 |

Graduation by Academic Programs (continued)

| Program | 2010-11 | 2011-12 | 2012-13 | 2013-14 | 2014-15 | 2015-16 | 2016-17 |
|---|---------|---------|---------|---------|---------|---------|---------|
| Music | 1 | 5 | 2 | 3 | 4 | 6 | 2 |
| Natural Resource Management (BS) | 16 | 19 | 24 | 16 | 22 | 27 | 22 |
| Regents Bachelor of Arts (BORBA) | 16 | 22 | 20 | 15 | 14 | 18 | 13 |
| Total | 161 | 151 | 174 | 176 | 136 | 177 | 164 |
| Associate Degrees | | | | | | | |
| General Business | 18 | 27 | 7 | 12 | 16 | 30 | 3 |
| Criminal Justice (AS) | 0 | 12 | 10 | 11 | 22 | 18 | 1 |
| Forest Technology (AS) | 9 | 12 | 8 | 11 | 3 | 7 | 11 |
| General Studies (AA) | 1 | 3 | 1 | 5 | 6 | 5 | 41 |
| Land Surveying (AS) | 8 | 4 | 5 | 8 | 8 | 10 | 5 |
| Total | 36 | 58 | 31 | 47 | 55 | 70 | 61 |
| Grand Total | 197 | 209 | 205 | 223 | 191 | 247 | 225 |

Degrees Conferred

| Degree Type | 2010-11 | 2011-12 | 2012-13 | 2013-14 | 2014-15 | 2015-16 | 2016-17 |
|----------------------|------------|------------|------------|------------|------------|------------|------------|
| Associate Degree | 36 | 58 | 31 | 47 | 55 | 70 | 19 |
| Baccalaureate Degree | 161 | 151 | 174 | 176 | 136 | 177 | 168 |
| Total | 197 | 209 | 205 | 223 | 191 | 247 | 187 |

Student Profile

Fall 2011 – Fall 2017

| | Fall 2010 | | Fall 2011 | | Fall 2012 | | Fall 2013 | | Fall 2014 | | Fall 2015 | | Fall 2017 | |
|-------------------|-----------|---------|-----------|---------|-----------|---------|-----------|---------|-----------|---------|-----------|---------|-----------|---------|
| | Number | Percent | Number | Percent | Number | Percent | Number | Percent | Number | Percent | Number | Percent | Number | Percent |
| Students Total | 1857 | 100% | 1898 | 100% | 1850 | 100% | 1802 | 100% | 1732 | 100% | 1641 | 100% | 1672 | 100% |
| Gender | | | | | | | | | | | | | | |
| Male | 1078 | 58% | 1117 | 59% | 1055 | 57% | 1043 | 58% | 956 | 55% | 952 | 58% | 952 | 57% |
| Female | 779 | 42% | 781 | 41% | 795 | 43% | 759 | 42% | 776 | 45% | 689 | 42% | 720 | 43% |
| Residence | | | | | | | | | | | | | | |
| WV Resident | 1630 | 88% | 1607 | 85% | 1582 | 86% | 1560 | 87% | 1471 | 85% | 1404 | 86% | 1446 | 86% |
| Non-Resident | 227 | 12% | 291 | 15% | 268 | 14% | 242 | 13% | 260 | 15% | 237 | 14% | 226 | 14% |
| Attendance Status | | | | | | | | | | | | | | |
| Full-Time | 1188 | 64% | 1232 | 65% | 1114 | 60% | 1038 | 58% | 1044 | 60% | 1059 | 65% | 1045 | 62% |
| Part-Time | 667 | 36% | 666 | 35% | 736 | 40% | 764 | 42% | 688 | 40% | 582 | 35% | 627 | 38% |
| Ethnicity | | | | | | | | | | | | | | |
| White | 1452 | 78% | 1484 | 78% | 1522 | 82% | 1376 | 76% | 1281 | 74% | 1030 | 63% | 1338 | 80% |
| African-Amer. | 302 | 16% | 323 | 17% | 250 | 14% | 234 | 13% | 258 | 15% | 198 | 12% | 184 | 11% |
| Other* | 103 | 6% | 91 | 5% | 72 | 4% | 192 | 11% | 193 | 11% | 413 | 25% | 150 | 9% |
| Age | | | | | | | | | | | | | | |
| Under 25 | 1224 | 66% | 1229 | 64% | 1212 | 66% | 1196 | 66% | 1341 | 78% | 1320 | 80% | 1346 | 81% |
| 25-29 | 181 | 10% | 209 | 11% | 164 | 9% | 189 | 11% | 111 | 6% | 112 | 7% | 88 | 5% |
| 30-39 | 263 | 14% | 258 | 14% | 230 | 12% | 215 | 12% | 157 | 9% | 121 | 7% | 128 | 8% |
| 40+ | 189 | 10% | 202 | 11% | 243 | 13% | 202 | 11% | 123 | 7% | 88 | 6% | 108 | 6% |
| Unknown | 18 | 1% | | | | | | | | | | | | |

Enrollment by Gender – All Students

| Term | Total Enrollment | Males | Females | Percentage Male | Percentage Female |
|-----------|------------------|-------|---------|-----------------|-------------------|
| Fall 2011 | 1857 | 1078 | 779 | 58% | 42% |
| Fall 2012 | 1898 | 1117 | 781 | 59% | 41% |
| Fall 2013 | 1850 | 1055 | 795 | 57% | 43% |
| Fall 2014 | 1802 | 1043 | 759 | 58% | 42% |
| Fall 2015 | 1732 | 956 | 776 | 55% | 45% |
| Fall 2016 | 1641 | 952 | 689 | 58% | 42% |
| Fall 2017 | 1672 | 952 | 720 | 57% | 43% |

Enrollment by Gender – Excluding FCI & DMAPS

| Term | Total Enrollment | Males | Females | Percentage Male | Percentage Female |
|-----------|------------------|-------|---------|-----------------|-------------------|
| Fall 2011 | 1413 | 733 | 680 | 52% | 48% |
| Fall 2012 | 1455 | 771 | 684 | 53% | 47% |
| Fall 2013 | 1389 | 718 | 671 | 52% | 48% |
| Fall 2014 | 1304 | 668 | 636 | 51% | 49% |
| Fall 2015 | 1376 | 677 | 699 | 49% | 51% |
| Fall 2016 | 1311 | 671 | 640 | 51% | 49% |
| Fall 2017 | 1371 | 681 | 690 | 50% | 50% |

Enrollment By State of Residence

Fall

| Home of Residence | 2011 | 2012 | 2013 | 2014 | 2015 | 2016 | 2017 |
|----------------------|-------------|-------------|-------------|-------------|-------------|-------------|-------------|
| Alabama | 1 | 3 | 2 | 4 | 2 | 1 | 1 |
| California | 6 | 12 | 20 | 18 | 19 | 16 | 14 |
| District of Columbia | 30 | 41 | 33 | 20 | 22 | 11 | 5 |
| Florida | 13 | 15 | 10 | 16 | 21 | 20 | 23 |
| Georgia | 8 | 6 | 3 | 3 | 2 | 9 | 10 |
| Illinois | 6 | 9 | 5 | 4 | 3 | 3 | 1 |
| Kentucky | 1 | 6 | 5 | 1 | 3 | 1 | 2 |
| Maryland | 38 | 30 | 30 | 36 | 46 | 49 | 40 |
| Michigan | 5 | 3 | 2 | 1 | 6 | 7 | 5 |
| North Carolina | 5 | 3 | 6 | 2 | 3 | 3 | 2 |
| New York | 12 | 11 | 10 | 3 | 3 | 5 | 10 |
| Ohio | 50 | 47 | 49 | 23 | 32 | 18 | 18 |
| Pennsylvania | 2 | 6 | 5 | 7 | 10 | 13 | 8 |
| Texas | 3 | 2 | 0 | 2 | 2 | 2 | 3 |
| Virginia | 57 | 76 | 65 | 46 | 63 | 50 | 39 |
| West Virginia | 1601 | 1607 | 1582 | 1560 | 1471 | 1404 | 1446 |
| All Other States | 14 | 16 | 20 | 54 | 22 | 26 | 39 |
| Foreign Countries | 5 | 5 | 3 | 2 | 1 | 3 | 6 |
| Total | 1857 | 1898 | 1850 | 1802 | 1731 | 1641 | 1672 |

Enrollment by Ethnicity

| Term | White Non-Hispanic | Black Non-Hispanic | Hispanic | Asian or Pacific Islander | American Indian or Alaskan Native | Non-Resident Aliens | Two or more | Minority | Unknown |
|-----------|--------------------|--------------------|----------|---------------------------|-----------------------------------|---------------------|-------------|----------|---------|
| Fall 2011 | 1452 | 302 | 33 | 6 | 15 | 0 | 1 | 19% | 48 |
| Fall 2012 | 1480 | 323 | 32 | 4 | 13 | 11 | 0 | 20% | 35 |
| Fall 2013 | 1520 | 247 | 23 | 9 | 7 | 7 | 1 | 16% | 36 |
| Fall 2014 | 1375 | 232 | 24 | 3 | 0 | 6 | 17 | 16% | 145 |
| Fall 2015 | 1281 | 258 | 32 | 9 | 0 | 5 | 16 | 18% | 131 |
| Fall 2016 | 1230 | 231 | 27 | 18 | 0 | 5 | 16 | 17% | 114 |
| Fall 2017 | 1338 | 184 | 29 | 14 | 0 | 6 | 29 | 0% | 72 |

Percentage of Enrollment by Ethnicity

| Term | White Non-Hispanic | Black Non-Hispanic | Hispanic | Asian or Pacific Islander | American Indian or Alaskan Native | Non-Resident Aliens | Two or more | % Minority | Unknown |
|-----------|--------------------|--------------------|----------|---------------------------|-----------------------------------|---------------------|-------------|------------|---------|
| Fall 2011 | 78% | 16% | 2% | .3% | .8% | 0% | 3% | 19% | 2.6% |
| Fall 2012 | 78% | 17% | 2% | .2% | .7% | .6% | 2% | 20% | 1.8% |
| Fall 2013 | 82% | 13% | 1% | .5% | .4% | .4% | 2% | 16% | 1.9% |
| Fall 2014 | 76% | 13% | 1% | .2% | 0% | .3% | .9% | 16% | 8% |
| Fall 2015 | 74% | 15% | 2% | .4% | 0% | .2% | .9% | 18% | 8% |
| Fall 2016 | 75% | 14% | 2% | 1% | 0% | .3% | 1% | 17% | 7% |
| Fall 2017 | 80% | 11% | 2% | 1 | 0% | .4% | 2% | 0% | 4% |

Average Age of All Students

| Term | Age |
|-----------|-----|
| Fall 2011 | 26 |
| Fall 2012 | 26 |
| Fall 2013 | 27 |
| Fall 2014 | 26 |
| Fall 2015 | 23 |
| Fall 2016 | 23 |
| Fall 2017 | 23 |

Students Age 25 and Older – All

| Term | Undergraduate Enrollment | Undergraduates 25 Years or Older | Percent |
|-----------|--------------------------|----------------------------------|---------|
| Fall 2011 | 1857 | 633 | 34% |
| Fall 2012 | 1898 | 669 | 35% |
| Fall 2013 | 1850 | 637 | 34% |
| Fall 2014 | 1802 | 606 | 34% |
| Fall 2015 | 1732 | 391 | 23% |
| Fall 2016 | 1641 | 353 | 22% |
| Fall 2017 | 1672 | 326 | 19% |

Students Age 25 and Older - All Freshmen

| Term | Total Freshmen | Freshmen 25 Years or Older | % of Total Freshmen |
|-----------|----------------|----------------------------|---------------------|
| Fall 2011 | 682 | 236 | 35% |
| Fall 2012 | 680 | 221 | 33% |
| Fall 2013 | 573 | 155 | 27% |
| Fall 2014 | 566 | 144 | 25% |
| Fall 2015 | 489 | 88 | 18% |
| Fall 2016 | 517 | 96 | 19% |
| Fall 2017 | 510 | 122 | 24% |

Students Age 25 and Older Full-Time

| Term | Full-Time Enrollment | Full-Time Students 25 Years or Older | Percent of Full-Time Students 25 Years or Older |
|-----------|----------------------|--------------------------------------|---|
| Fall 2011 | 1188 | 216 | 18% |
| Fall 2012 | 1232 | 250 | 20% |
| Fall 2013 | 1114 | 204 | 18% |
| Fall 2014 | 1038 | 176 | 17% |
| Fall 2015 | 1044 | 114 | 11% |
| Fall 2016 | 1059 | 103 | 10% |
| Fall 2017 | 1045 | 95 | 9% |

Students Age 25 and Older Part-Time

| Term | Part-Time Enrollment | Part-Time Students 25 Years or Older | Percent of Part-Time Students 25 Years or Older |
|-----------|----------------------|--------------------------------------|---|
| Fall 2011 | 669 | 417 | 62% |
| Fall 2012 | 666 | 419 | 63% |
| Fall 2013 | 736 | 433 | 59% |
| Fall 2014 | 764 | 430 | 56% |
| Fall 2015 | 688 | 277 | 40% |
| Fall 2016 | 582 | 250 | 43% |
| Fall 2017 | 627 | 231 | 37% |

ACT Scores and SAT Scores - Fall First-Time/Full-Time

| Term | ACT Average | SAT Average | State College |
|----------------------|-------------|-------------|--------------------|
| | | | System ACT Average |
| Fall 2011 | 19.0 | 800 | 20.6 |
| Associate | 16.7 | 745 | |
| Baccalaureate | 20.4 | 858 | |
| Fall 2012 | 18.9 | 830 | 20.6 |
| Associate | 17 | 757 | |
| Baccalaureate | 20.5 | 914 | |
| Fall 2013 | 18.6 | 847 | 20.6 |
| Associate | 16.7 | 847 | |
| Baccalaureate | 19.7 | 927 | |
| Fall 2014 | 19.3 | 872 | 20.6 |
| Associate | 17.3 | 723 | |
| Baccalaureate | 19.9 | 908 | |
| Fall 2015 | 19.6 | 853 | 20.8 |
| Associate | 17.8 | 745 | |
| Baccalaureate | 20.0 | 884 | |
| Fall 2016 | 19.1 | 861 | N/A |
| Associate | 16.5 | 743 | |
| Baccalaureate | 19.7 | 937 | |
| Fall 2017 | 19.0 | 861 | N/A |
| Associate | 16.3 | 743 | |
| Baccalaureate | 19.7 | 909 | |

*Change in SAT test

ACT Scores and SAT Scores – Spring Admits
First-Time/Full-Time

| Term | ACT Average | SAT Average |
|----------------------|--------------------|--------------------|
| Spring 2012 | 17 | 750 |
| Associate | 16.4 | 750 |
| Baccalaureate | 18.8 | 841 |
| Spring 2013 | 18.8 | 841 |
| Associate | 16.0 | 770 |
| Baccalaureate | 20.5 | 870 |
| Spring 2014 | 18.7 | 935 |
| Associate | 15 | 890 |
| Baccalaureate | 20 | 950 |
| Spring 2015 | 16.4 | 835 |
| Associate | 15.6 | 875 |
| Baccalaureate | 17.3 | 815 |
| Spring 2016 | 17.7 | 920 |
| Associate | 16.5 | 0 |
| Baccalaureate | 20 | 920 |
| Spring 2017 | 17.8 | 800 |
| Associate | 20 | 0 |
| Baccalaureate | 17.6 | 800 |

Grade Point Averages Semester¹

| | 2011-12 | | 2012-13 | | 2013-14 | | 2014-15 | | 2015-16 | | 2016-17 | |
|-------------------------------------|---------|--------|---------|--------|---------|--------|---------|--------|---------|--------|---------|--------|
| | Fall | Spring | Fall | Spring | Fall | Spring | Fall | Spring | Fall | Spring | Fall | Spring |
| All Students | 2.45 | 2.70 | 2.42 | 2.23 | 2.16 | 2.21 | 2.28 | 2.55 | 2.38 | 2.53 | 2.54 | 2.49 |
| All Freshmen | 2.28 | 2.16 | 2.11 | 1.89 | 2.05 | 1.85 | 2.19 | 2.37 | 2.49 | 2.48 | 2.28 | 2.04 |
| First-Time Full-Time Freshmen | 2.41 | 2.72 | 2.24 | 2.94 | 2.61 | 2.48 | 2.68 | 2.06 | 2.68 | 2.08 | 2.47 | 2.74 |

Grade Point Averages Cumulative²

| | 2011-12 | | 2012-13 | | 2013-14 | | 2014-15 | | 2015-16 | | 2016-17 | |
|-------------------------------------|---------|--------|---------|--------|---------|--------|---------|--------|---------|--------|---------|--------|
| | Fall | Spring | Fall | Spring | Fall | Spring | Fall | Spring | Fall | Spring | Fall | Spring |
| All Students | 2.69 | 2.86 | 2.38 | 2.46 | 2.31 | 2.45 | 2.40 | 2.66 | 2.49 | 2.64 | 2.59 | 2.64 |
| All Freshmen | 2.58 | 2.46 | 2.27 | 2.25 | 2.17 | 2.14 | 2.31 | 2.56 | 2.58 | 2.66 | 2.37 | 2.41 |
| First-Time Full-Time Freshmen | 2.44 | 2.76 | 2.43 | 2.87 | 2.61 | 2.48 | 2.72 | 2.08 | 2.70 | 2.08 | 2.53 | 2.73 |

¹ Semester GPA shows work completed for the semester.

² Cumulative GPA includes the total of all dual credit, transfer, and GSC work.

Enrollment in One or More Developmental Courses – Fall First-Time/Full-Time

| Term | Freshmen | Developmental Courses | Percent in Developmental Courses |
|------------------------|-----------------|------------------------------|---|
| Fall 2011 | 284 | 179 | 63% |
| Fall 2012 | 339 | 208 | 61% |
| Fall 2013 | 280 | 190 | 68% |
| Fall 2014 | 264 | 163 | 62% |
| Fall 2015 ¹ | 287 | 105 | 37% |
| Fall 2016 | 320 | 86 | 27% |
| Fall 2017 | 0 | 0 | 0% |

Enrollment in One or More Developmental Courses – Spring Admits First-Time/Full-Time

| Term | Freshmen | Developmental Courses | Percent in Developmental Courses |
|--------------------------|-----------------|------------------------------|---|
| Spring 2011 | 41 | 37 | 90% |
| Spring 2012 | 22 | 16 | 73% |
| Spring 2013 | 27 | 20 | 74% |
| Spring 2014 | 24 | 15 | 63% |
| Spring 2015 | 25 | 18 | 72% |
| Spring 2016 ¹ | 22 | 3 | 14% |
| Spring 2017 | 0 | 0 | 0% |

¹ Started eliminating pure Developmental courses and moving towards lab enhanced courses.

West Virginia County Enrollment – Top 25
Fall 2017 with historical figures

| County | 2011 | 2012 | 2013 | 2014 | 2015 | 2016 | 2017 |
|-------------------|-------------|-------------|-------------|-------------|-------------|-------------|-------------|
| Braxton | 167 | 180 | 140 | 155 | 128 | 148 | 149 |
| Gilmer | 219 | 196 | 168 | 153 | 290 | 213 | 132 |
| Nicholas | 66 | 91 | 112 | 90 | 77 | 73 | 75 |
| Raleigh | 30 | 50 | 32 | 50 | 57 | 67 | 74 |
| Webster | 23 | 24 | 28 | 62 | 75 | 61 | 65 |
| Fayette | 28 | 27 | 39 | 50 | 24 | 29 | 59 |
| Lewis | 70 | 72 | 80 | 84 | 75 | 57 | 53 |
| Calhoun | 86 | 61 | 83 | 46 | 44 | 48 | 46 |
| Ritchie | 80 | 71 | 107 | 82 | 46 | 28 | 41 |
| Kanawha | 51 | 52 | 68 | 48 | 47 | 49 | 41 |
| Roane | 56 | 52 | 51 | 31 | 26 | 20 | 32 |
| Clay | 35 | 72 | 52 | 42 | 43 | 40 | 32 |
| Harrison | 44 | 37 | 52 | 36 | 24 | 28 | 28 |
| Wirt | 17 | 12 | 14 | 12 | 13 | 8 | 26 |
| Upshur | 34 | 33 | 25 | 16 | 15 | 16 | 26 |
| Wyoming | 8 | 5 | 6 | 11 | 36 | 20 | 26 |
| Grant | 3 | 2 | 3 | 7 | 21 | 20 | 23 |
| Jackson | 20 | 23 | 21 | 18 | 15 | 20 | 23 |
| Pocahontas | 10 | 18 | 20 | 19 | 20 | 17 | 18 |
| Greenbrier | 14 | 10 | 14 | 14 | 16 | 14 | 16 |
| Randolph | 47 | 50 | 58 | 50 | 39 | 17 | 16 |
| Wood | 46 | 37 | 39 | 23 | 26 | 9 | 15 |
| Marion | 11 | 10 | 12 | 7 | 17 | 13 | 14 |
| Berkeley | 27 | 21 | 31 | 35 | 20 | 22 | 14 |
| Boone | 9 | 7 | 9 | 12 | 23 | 16 | 13 |

Not counting Second Chance Pell Students

West Virginia County Enrollment - All

| County | 2011 | 2012 | 2013 | 2014 | 2015 | 2016 | 2017 |
|---------------------|------|------|------|------|------|------|------|
| Barbour | 9 | 12 | 15 | 16 | 8 | 3 | 8 |
| Berkeley | 27 | 21 | 31 | 35 | 20 | 22 | 14 |
| Boone | 9 | 7 | 9 | 12 | 23 | 16 | 13 |
| Braxton | 167 | 180 | 140 | 155 | 128 | 148 | 149 |
| Brooke | 1 | 4 | 2 | 3 | 11 | 7 | 5 |
| Cabell | 11 | 13 | 17 | 14 | 10 | 2 | 5 |
| Calhoun | 86 | 61 | 83 | 46 | 44 | 48 | 46 |
| Clay | 35 | 72 | 52 | 42 | 43 | 40 | 32 |
| Doddridge | 14 | 11 | 10 | 16 | 12 | 16 | 8 |
| Fayette | 28 | 27 | 39 | 50 | 24 | 29 | 59 |
| Gilmer | 219 | 196 | 168 | 153 | 290 | 213 | 132 |
| Gilmer (FCI) | 188 | 175 | 103 | 139 | 135 | 82 | 54 |
| Grant | 3 | 2 | 3 | 7 | 21 | 20 | 23 |
| Greenbrier | 14 | 10 | 14 | 14 | 16 | 14 | 16 |
| Hampshire | 6 | 8 | 1 | 6 | 9 | 11 | 4 |
| Hancock | 4 | 3 | 2 | 2 | 3 | 2 | 1 |
| Hardy | 1 | 5 | 2 | 2 | 1 | 8 | 4 |
| Harrison | 44 | 37 | 52 | 36 | 24 | 28 | 28 |
| Jackson | 20 | 23 | 21 | 18 | 15 | 20 | 23 |
| Jefferson | 7 | 7 | 6 | 13 | 8 | 7 | 8 |
| Kanawha | 51 | 52 | 68 | 48 | 47 | 49 | 41 |
| Lewis | 70 | 72 | 80 | 84 | 75 | 57 | 53 |
| Lincoln | 10 | 7 | 3 | 5 | 10 | 8 | 5 |
| Logan | 5 | 7 | 8 | 16 | 14 | 16 | 13 |
| Marion | 11 | 10 | 12 | 7 | 17 | 13 | 14 |
| Marshall | 10 | 11 | 7 | 8 | 14 | 15 | 11 |
| Mason | 17 | 16 | 14 | 17 | 5 | 9 | 5 |
| McDowell | 10 | 6 | 9 | 12 | 10 | 6 | 8 |

West Virginia County Enrollment (continued)

| County | 2011 | 2012 | 2013 | 2014 | 2015 | 2016 | 2017 |
|-------------------|------|------|------|------|------|------|------|
| Mercer | 8 | 9 | 7 | 13 | 12 | 8 | 5 |
| Mineral | 1 | 2 | 5 | 4 | 3 | 2 | 3 |
| Mingo | 2 | 4 | 2 | 0 | 4 | 0 | 3 |
| Monongalia | 5 | 4 | 5 | 7 | 8 | 8 | 5 |
| Monroe | 5 | 3 | 3 | 4 | 2 | 4 | 1 |
| Morgan | 3 | 5 | 4 | 5 | 1 | 4 | 4 |
| Nicholas | 66 | 91 | 112 | 90 | 77 | 73 | 75 |
| Ohio | 4 | 3 | 4 | 2 | 22 | 16 | 8 |
| Pendleton | 10 | 18 | 14 | 14 | 11 | 9 | 10 |
| Pleasants | 7 | 4 | 8 | 8 | 4 | 4 | 5 |
| Pocahontas | 10 | 18 | 20 | 19 | 20 | 17 | 18 |
| Preston | 4 | 3 | 4 | 7 | 7 | 5 | 4 |
| Putnam | 10 | 13 | 15 | 9 | 9 | 12 | 12 |
| Raleigh | 30 | 50 | 32 | 50 | 57 | 67 | 74 |
| Randolph | 47 | 50 | 58 | 50 | 39 | 97 | 155 |
| Ritchie | 80 | 71 | 107 | 82 | 46 | 28 | 41 |
| Roane | 56 | 52 | 51 | 31 | 26 | 20 | 32 |
| Summers | 7 | 9 | 4 | 6 | 9 | 5 | 3 |
| Taylor | 8 | 10 | 12 | 12 | 9 | 9 | 5 |
| Tucker | 7 | 8 | 7 | 8 | 11 | 6 | 6 |
| Tyler | 5 | 4 | 6 | 5 | 12 | 15 | 11 |
| Upshur | 34 | 33 | 25 | 16 | 15 | 16 | 26 |
| Wayne | 5 | 4 | 5 | 6 | 6 | 9 | 9 |
| Webster | 23 | 24 | 28 | 62 | 75 | 61 | 65 |
| Wetzel | 8 | 5 | 8 | 8 | 9 | 6 | 11 |
| Wirt | 17 | 12 | 14 | 12 | 13 | 8 | 26 |
| Wood | 46 | 37 | 39 | 23 | 26 | 9 | 15 |
| Wyoming | 8 | 5 | 6 | 11 | 36 | 20 | 26 |

| Residence Hall Occupancy Rates | | | | | | | |
|---------------------------------------|------------------|-------------------|-----------------------|--------------------|------------------------|-------------|---------------|
| Spring 2017 | | | | | | | |
| Hall Name | Room Type | # of rooms | Max # students | # occupants | Occupancy Rates | Male | Female |
| Goodwin | Single | 192 | 192 | 161 | 84% | 89 | 72 |
| | Double | 145 | 290 | 237 | 78% | 136 | 101 |
| | Total | 337 | 482 | 398 | 83% | 225 | 173 |
| Pioneer Village | Single | 152 | 152 | 112 | 74% | 61 | 51 |
| Sub Total | Single | 344 | 344 | 273 | 79% | 150 | 123 |
| Sub Total | Double | 145 | 290 | 237 | 82% | 136 | 101 |
| | Total | 489 | 634 | 510 | 80% | 286 | 224 |
| Pickens | APT | 6 | 12 | 4 | 33% | 1 | 3 |
| | Single | 0 | 0 | 0 | 0% | 0 | 0 |
| | Double | 12 | 12 | 0 | 0% | 0 | 0 |
| Grand Totals | | 507 | 646 | 514 | 80% | 287 | 227 |

Calculated on the end of the 2nd week of class.

| Residence Hall Occupancy Rates | | | | | | | |
|--------------------------------|--------------|------------|----------------|-------------|-----------------|------------|------------|
| Fall 2017 | | | | | | | |
| Hall Name | Room Type | # of rooms | Max # students | # occupants | Occupancy Rates | Male | Female |
| | | | | | | | |
| Goodwin | Single | 192 | 192 | 192 | 100% | 113 | 79 |
| | Double | 145 | 290 | 282 | 97% | 158 | 124 |
| | Total | 337 | 482 | 474 | 98% | 271 | 203 |
| | | | | | | | |
| Pioneer Village | Single | 152 | 152 | 146 | 96% | 87 | 59 |
| | | | | | | | |
| Sub Total | Single | 344 | 344 | 338 | 98% | 200 | 138 |
| Sub Total | Double | 145 | 290 | 282 | 97% | 158 | 124 |
| | Total | 489 | 634 | 620 | 98% | 358 | 262 |
| | | | | | | | |
| Pickens | APT | 2 | 4 | 4 | 100% | 2 | 2 |
| | Single | 0 | 0 | 0 | 0% | 0 | 0 |
| | Double | 10 | 20 | 11 | 55% | 10 | 1 |
| Grand Totals | | 496 | 670 | 635 | 97% | 370 | 265 |

Calculated on the end of the 2nd week of class.

Student/Faculty Ratios¹

| Term | FTE Students | FTE Faculty | FTE Student/Faculty Ratio |
|-----------|--------------|-----------------|---------------------------|
| Fall 2010 | 1468 | 79 | 19:1 |
| Fall 2011 | 1412 | 80 | 18:1 |
| Fall 2012 | 1445 | 93 ² | 16:1 |
| Fall 2013 | 1330 | 83 | 16:1 |
| Fall 2014 | 1279 | 81 | 16.1 |
| Fall 2015 | 1251 | 72 | 17.1 |
| Fall 2016 | 1263 | 69 | 18.1 |
| Fall 2017 | 1262 | 67 | 18.1 |

¹ Ratios computed by Student FTE (student total credit hours produced / 15) ; Faculty FTE (full-time faculty + 1/3 of part-time faculty)

² Reflects an increase in the number of courses being delivered to Adult Learners and High School students (dual credit).

Full-Time Instructional Faculty by Academic Rank

| Term | Professor | | Associate Professor | | Assistant Professor | | Instructor | | Lecturer, Graduate Assistant & Other | | Total |
|-----------|-----------|-----|---------------------|-----|---------------------|-----|------------|-----|--------------------------------------|----|-----------|
| | # | % | # | % | # | % | # | % | # | % | |
| Fall 2011 | 10 | 15% | 18 | 26% | 28 | 41% | 12 | 18% | 0 | 0% | 68 |
| Fall 2012 | 11 | 17% | 17 | 25% | 29 | 44% | 9 | 14% | 0 | 0% | 66 |
| Fall 2013 | 11 | 16% | 16 | 23% | 34 | 49% | 8 | 12% | 0 | 0% | 69 |
| Fall 2014 | 9 | 13% | 20 | 30% | 32 | 48% | 6 | 9% | 0 | 0% | 67 |
| Fall 2015 | 8 | 13% | 17 | 27% | 29 | 45% | 8 | 13% | 2 | 2% | 64 |
| Fall 2016 | 8 | 13% | 21 | 35% | 22 | 37% | 8 | 13% | 1 | 2% | 60 |
| Fall 2016 | 9 | 16% | 20 | 34% | 24 | 41% | 5 | 9% | 0 | 0% | 58 |

Full-Time Instructional Faculty by Tenure Status

| Term | Professor | | | Associate Professor | | | Assistant Professor | | | Instructor | | | Lecturer, Graduate Assistant & Other | | | Total | | |
|-----------|-----------|---------|------|---------------------|---------|------|---------------------|---------|-----|------------|---------|----|--------------------------------------|---------|----|-----------|-----------|------------|
| | # | Tenured | % | # | Tenured | % | # | Tenured | % | # | Tenured | % | # | Tenured | % | # | Tenured | % |
| Fall 2011 | 10 | 10 | 100% | 18 | 17 | 94% | 28 | 2 | 7% | 12 | 0 | 0% | 0 | 0 | 0% | 68 | 29 | 43% |
| Fall 2012 | 11 | 11 | 100% | 17 | 16 | 94% | 29 | 3 | 10% | 9 | 0 | 0% | 0 | 0 | 0% | 66 | 30 | 45% |
| Fall 2013 | 11 | 11 | 100% | 16 | 15 | 94% | 34 | 5 | 15% | 8 | 0 | 0% | 0 | 0 | 0% | 69 | 31 | 45% |
| Fall 2014 | 9 | 9 | 100% | 20 | 20 | 100% | 32 | 4 | 13% | 6 | 0 | 0% | 0 | 0 | 0% | 67 | 33 | 49% |
| Fall 2015 | 8 | 8 | 100% | 17 | 17 | 100% | 29 | 5 | 17% | 8 | 0 | 0% | 2 | 0 | 0% | 64 | 34 | 54% |
| Fall 2016 | 8 | 8 | 100% | 21 | 21 | 100% | 22 | 5 | 23% | 8 | 0 | 0% | 1 | 0 | 0% | 60 | 34 | 57% |
| Fall 2016 | 9 | 8 | 89% | 20 | 19 | 95% | 24 | 3 | 13% | 5 | 0 | 0% | 0 | 0 | 0% | 58 | 30 | 52% |

Full-Time Instructional Faculty by Highest Degree Held

| Term | Doctoral | | Masters | | First Professional | | Bachelors | | Total |
|-----------|----------|-----|---------|-----|--------------------|----|-----------|----|-----------|
| | # | % | # | % | # | % | # | % | |
| Fall 2011 | 37 | 54% | 29 | 43% | 1 | 1% | 1 | 1% | 68 |
| Fall 2012 | 35 | 53% | 30 | 45% | 1 | 2% | 0 | 0% | 66 |
| Fall 2013 | 36 | 52% | 31 | 45% | 2 | 3% | 0 | 0% | 69 |
| Fall 2014 | 34 | 51% | 31 | 46% | 2 | 3% | 0 | 0% | 67 |
| Fall 2015 | 32 | 50% | 28 | 44% | 1 | 1% | 3 | 5% | 64 |
| Fall 2016 | 28 | 47% | 28 | 47% | 1 | 2% | 3 | 5% | 60 |
| Fall 2017 | 30 | 52% | 27 | 47% | 1 | 2% | 0 | 0% | 58 |

Part-Time Instructional Faculty by Highest Degree Held

| Term | Doctoral | | Masters | | First Professional | | Bachelors | | Other | | Total |
|------------------------|----------|-----|---------|-----|--------------------|-----|-----------|-----|-------|----|-----------------|
| | # | % | # | % | # | % | # | % | # | % | |
| Fall 2011 | 1 | 3% | 24 | 67% | 5 | 13% | 6 | 17% | 0 | 0% | 36 |
| Fall 2012 ¹ | 7 | 9% | 62 | 76% | 3 | 4% | 9 | 11% | 0 | 0% | 81 ¹ |
| Fall 2013 | 6 | 14% | 28 | 67% | 2 | 5% | 5 | 12% | 1 | 2% | 42 |
| Fall 2014 | 4 | 9% | 31 | 76% | 2 | 5% | 2 | 5% | 2 | 5% | 41 |
| Fall 2015 | 4 | 16% | 16 | 64% | 0 | 0 | 4 | 16% | 1 | 4% | 25 |
| Fall 2016 | 3 | 11% | 22 | 79% | 0 | 0 | 2 | 7% | 1 | 3% | 28 |
| Fall 2017 | 2 | 7% | 23 | 85% | 0 | 0 | 2 | 7% | 0 | 0% | 27 |

¹ Reflects an increase in the number of courses being delivered to Adult Learners and High School students (dual credit).

Full-Time Instructional Faculty by Gender

| Term | Male | | Female | | Total Number |
|-----------|--------|------------|--------|------------|--------------|
| | Number | Percentage | Number | Percentage | |
| Fall 2011 | 46 | 68% | 22 | 32% | 68 |
| Fall 2012 | 41 | 62% | 25 | 38% | 66 |
| Fall 2013 | 42 | 61% | 27 | 39% | 69 |
| Fall 2014 | 42 | 63% | 25 | 37% | 67 |
| Fall 2015 | 43 | 67% | 21 | 33% | 64 |
| Fall 2016 | 43 | 72% | 17 | 28% | 60 |
| Fall 2017 | 37 | 64% | 21 | 36% | 58 |

Full-Time Instructional Faculty by Ethnicity

| Term | White, Non-Hispanic | | Black, Non-Hispanic | | Hispanic | | Asian or Pacific Islander | | American Indian or Alaskan Native | | Total | % Minority |
|-----------|---------------------|-------|---------------------|-------|----------|-------|---------------------------|-------|-----------------------------------|------|-----------|-------------|
| | # | % | # | % | # | % | # | % | # | % | | |
| Fall 2011 | 65 | 95.6% | 1 | 1.47% | 1 | 1.47% | 1 | 1.47% | 0 | 0.0% | 68 | 4.0% |
| Fall 2012 | 63 | 95.5% | 1 | 1.51% | 1 | 1.51% | 1 | 1.51% | 0 | 0.0% | 66 | 4.5% |
| Fall 2013 | 65 | 94.2% | 0 | 0% | 1 | 1.45% | 3 | 4.35% | 0 | 0.0% | 69 | 5.8% |
| Fall 2014 | 62 | 92.5% | 0 | 0% | 1 | 1.49% | 4 | 5.97% | 0 | 0.0% | 67 | 7.5% |
| Fall 2015 | 58 | 90.6% | 0 | 0% | 2 | 3.1% | 4 | 6.3% | 0 | 0% | 64 | 9.4% |
| Fall 2016 | 56 | 93.3% | 0 | 0% | 2 | 3.3% | 2 | 3.3% | 0 | 0% | 60 | 6.7% |
| Fall 2017 | 55 | 95% | 0 | 0% | 0 | 0% | 3 | 5% | 0 | 0% | 58 | 5.2% |

Full-Time Instructional Faculty - Average Nine-Month Base Salary¹

| Term | Professor | | Associate Professor | | Assistant Professor | | Instructor | | Lecturer, Graduate Assistant & Other | | Total | Average Salary |
|-----------|-----------|----------|---------------------|----------|---------------------|----------|------------|----------|--------------------------------------|----------|-----------|-----------------|
| | # | Salary | # | Salary | # | Salary | # | Salary | # | Salary | | |
| Fall 2011 | 10 | \$69,249 | 18 | \$60,610 | 28 | \$48,367 | 12 | \$42,015 | 0 | \$0 | 68 | \$53,558 |
| Fall 2012 | 11 | \$69,758 | 17 | \$60,384 | 29 | \$48,981 | 9 | \$40,728 | 0 | \$0 | 66 | \$54,005 |
| Fall 2013 | 11 | \$68,381 | 16 | \$61,692 | 34 | \$48,789 | 8 | \$39,846 | 0 | \$0 | 69 | \$53,867 |
| Fall 2014 | 9 | \$70,711 | 20 | \$63,357 | 32 | \$50,428 | 6 | \$43,748 | 0 | \$0 | 67 | \$56,414 |
| Fall 2015 | 8 | \$70,649 | 17 | \$61,479 | 29 | \$49,848 | 8 | \$42,268 | 2 | \$41,252 | 64 | \$54,059 |
| Fall 2016 | 8 | \$65,399 | 21 | \$58,610 | 22 | \$47,234 | 8 | \$44,070 | 1 | \$48,288 | 60 | \$53,233 |
| Fall 2017 | 9 | \$64,517 | 20 | \$58,033 | 24 | \$46,579 | 5 | \$40,780 | 0 | 0 | 58 | \$52,812 |

¹Data does not include pay for extra or extended assignments.

Semester Tuition and Fees 2010-2017

| | 2010-11 | 2011-12 | 2012-13 | 2013-14 | 2014-15 | 2015-16 | 2016-17 | 2017-18 |
|---------------------|---------|---------|---------|---------|---------|---------|---------|---------|
| Resident | \$2,444 | \$2,676 | \$2,930 | \$3,192 | \$3,348 | \$3516 | \$3672 | \$3671 |
| Non-Resident | \$6,000 | \$6,360 | \$6,912 | \$7,200 | \$7,560 | \$7944 | \$8300 | \$8299 |
| Metro Rate | \$4,116 | \$4,416 | \$4,812 | \$5,196 | \$5,460 | \$5736 | \$5944 | \$5943 |

Annual Tuition Comparisons Fall 2017

| Institution Name | In-State Tuition | Out-of-State Tuition | Metro Rate | Room & Board |
|--------------------------------|------------------|----------------------|--------------|--------------|
| Bluefield State College | 6728 | 13032 | 9560 | 0 |
| Concord University | 7574 | 16654 | 0 | 8642 |
| Fairmont State University | 7296 | 15398 | 0 | 8788 |
| Glenville State College | 7342 | 16598 | 11886 | 9942 |
| Shepherd University | 7328 | 17868 | 0 | 9914 |
| West Liberty University | 7380 | 15020 | 12680 | 8160 |
| West Virginia State University | 7346 | 16350 | 12762 | 8674 |
| Average | 7285 | 15846 | 11722 | 9020 |

Source: HEPC

Revenues Summarized¹

| | 2013-14 | 2014-15 | 2015-16 | 2016-17 |
|---|---------------------|---------------------|---------------------|---------------------|
| Operating Revenues: | | | | |
| Tuition and fees | \$7,645,450 | \$7,826,976 | \$9,254,917 | \$9,018,375 |
| Government Contracts and Grants | \$2,834,096 | \$2,919,401 | \$3,146,254 | \$3,144,355 |
| Private gifts, grants, and contracts | \$4,350,729 | \$2,175,292 | \$2,516,510 | \$1,636,957 |
| Sales and services of educational activities | \$709,756 | \$523,336 | \$286,364 | \$314,841 |
| Sales and services of auxiliary enterprises | \$6,122,893 | \$6,441,727 | \$6,753,247 | \$7,357,122 |
| Other sources | \$854,315 | \$912,606 | \$875,123 | \$767,529 |
| Payments made on behalf of College | 0 | \$241,860 | \$241,576 | \$276,406 |
| Total Operating Revenues | \$22,517,239 | \$20,799,338 | \$22,832,415 | \$22,515,585 |
| Non-Operating Revenues: | | | | |
| Government Appropriations | \$6,418,711 | \$6,318,177 | \$5,793,050 | \$5,773,569 |
| Federal PELL Grants | \$2,921,831 | \$2,885,617 | \$2,878,945 | \$3,413,819 |
| Income from investments | \$8,857 | \$3,890 | \$6,304 | \$14,860 |
| Total Non-Operating Revenues | \$9,349,399 | 9,449,544 | \$8,919,875 | \$9,202,248 |
| Other Capital Proceeds from Commission | \$3,207,159 | \$212,000 | \$0 | \$0 |
| Capital Gifts (Private) | \$1,097,145 | \$1,334,424 | \$50,000 | \$22,849 |
| Capital Appropriations from State | \$0 | \$0 | \$0 | \$0 |
| Total revenues | \$36,170,942 | \$31,795,306 | \$31,802,290 | \$31,740,682 |

¹See GSC Audited Financial Statements for Full Revenue Reports

Educational and General (E&G) Expenditures Summarized¹

| | 2013-14 | 2014-15 | 2015-16 | 2016-17 |
|-------------------------------------|---------------------|---------------------|---------------------|---------------------|
| Operating Expenses: | | | | |
| Instruction | \$6,625,178 | \$5,854,459 | \$6,172,938 | \$5,525,152 |
| Academic Support | \$1,004,275 | \$1,169,702 | \$1,038,372 | \$653,514 |
| Student Services | \$2,226,537 | \$2,832,967 | \$2,151,920 | \$2,154,071 |
| General Institutional Support | \$3,172,879 | \$3,304,831 | \$3,257,314 | \$3,269,487 |
| Operation and Maintenance of Plant | \$2,406,427 | \$2,826,411 | \$2,439,472 | \$2,350,823 |
| Scholarships and Aid | \$8,090,497 | \$8,504,662 | \$9,326,015 | \$10,746,195 |
| Auxiliary Enterprises | \$4,591,233 | \$4,833,043 | \$4,563,760 | \$4,406,065 |
| Depreciation | \$2,013,731 | \$2,430,014 | \$2,446,365 | \$2,341,091 |
| Fees Assessed by Policy Commission | \$81,304 | \$73,794 | \$69,062 | \$74,403 |
| Loan Cancellations and Write-Offs | \$0 | \$1,369 | \$361 | \$0 |
| Total Operating Expenses | \$30,212,061 | \$31,831,252 | \$31,465,579 | \$31,520,801 |
| Non-Operating Expenses: | | | | |
| Interest on Indebtedness | \$1,735,131 | \$1,683,723 | \$1,683,723 | \$1,438,293 |
| Other | \$141,245 | \$17,982 | \$36,058 | \$11,065 |
| Total Non-Operating Expenses | \$1,876,376 | \$1,701,705 | \$1,675,138 | \$1,449,358 |
| Total Expenditures | \$32,088,437 | \$33,532,957 | \$33,140,717 | \$32,970,159 |

¹See GSC Audited Financial Statements for Full Expenditure Reports

Financial Aid Summary First-Time Full-Time Freshmen

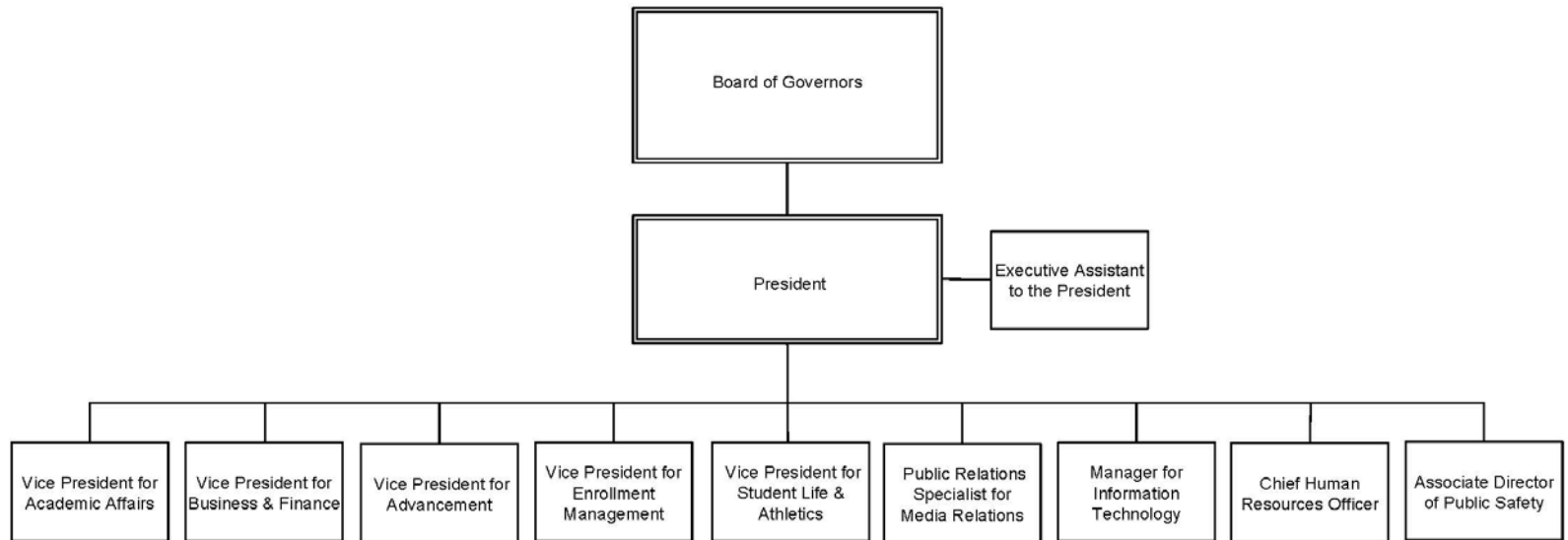
| | 2012-13 | 2013-14 | 2014-15 | 2015-16 | 2016-17 |
|--|----------|----------|----------|----------|---------|
| Applied for Financial Aid | 339 | 280 | 257 | 282 | 320 |
| Determined to have Financial need | 293 | 239 | 226 | 256 | 306 |
| Awarded Financial Aid | 290 | 235 | 226 | 253 | 306 |
| Average Financial Package | \$12,781 | \$11,763 | \$13,468 | \$14,532 | \$8,987 |

Financial Aid Processed

| | 2012-2013 | 2013-2014 | 2014-2015 | 2015-2016 | 2016-2017 |
|------------------|--------------|--------------|--------------|--------------|--------------|
| All types of Aid | \$9,925,466 | \$9,185,718 | \$9,363,642 | \$10,238,160 | \$10,389,982 |
| Loans Processed | \$7,314,086 | \$6,210,546 | \$5,668,041 | \$6,056,709 | \$5,172,892 |
| Total | \$17,239,552 | \$15,396,264 | \$15,031,683 | \$16,294,869 | \$15,562,874 |



GLENVILLE STATE COLLEGE
ORGANIZATIONAL CHART
2017-2018



Committee Membership – 2017-2018

| Academic Appeals | Academic Policy | Assessment Committee | Athletic Committee |
|--------------------------------|---------------------------|-----------------------------|---------------------------|
| Ann Reed, Chair & Adm. Liaison | Duane Chapman | Melody Wise, Chair | Duane Chapman |
| Jason Barr | Kevin Evans | David O'Dell, Vice Chair | Robin Cottrill |
| Adam Black | Dwight Heaster | Jason Barr | Adrian Duelley |
| Megan Darby | Jonathan Minton | Adam Black | Amanda Frymier |
| David Lewis | Cody Moore | Mike Gherke | Dwight Heaster |
| Avan McHenry | Paul Peck | Kenneth Lang | Shelly Ratliff |
| Jonathan Minton | Brian Perkins | Kandas Queen | Reed Ratliff |
| Leslie Ward | Crystal Smith | Shelly Ratliff | Ann Reed |
| Joseph Wood | Scott Wentz | Alison Witte | |
| | Ed Wood | Gary Morris, Adm. Liaison | |
| | Jong-Hoon Yu | Neal Benson, IR | |
| | Gary Morris, Adm. Liaison | Colton Ring | |
| | | | |
| | | | |

| College Leadership Council | Commencement/Convocation | Curriculum Committee | Diversity Committee |
|-----------------------------------|---------------------------------|-----------------------------|----------------------------|
| Gary Morris, Chair & Adm. Liaison | Membership not established | Lloyd Bone, Chair | Membership not established |
| Rachel Adams | | Melanie Anderson | |
| Neal Benson | | Lloyd Bone | |
| Denise Ellyson | | Kevin Cain | |
| David O'Dell | | Shara Curry | |
| Jared Wilson | | Art DeMatteo | |
| Ed Wood | | Denise Ellyson | |
| Justin Woods | | Megan Gibbons | |
| | | Dwight Heaster | |
| | | Kenneth Lang | |
| | | Cheryl McKinney | |
| | | Cody Moore | |
| | | Sara Sawyer | |
| | | Alison Witte | |
| | | Rick Witte | |
| | | Joseph Wood | |
| | | Justin Woods | |
| | | Gary Morris, Adm. Liaison | |

Committee Membership – 2017-2018

| Enrollment Management | Facilities Committee | Faculty Development | Faculty Senate |
|---------------------------------------|-----------------------------|----------------------------|-----------------------------------|
| | Membership not established | Gary Morris, Adm. Liaison | Jared Wilson, President |
| Neal Benson | | Shirley Alt | Gary Arbogast |
| Adrian Duelley | | Jennifer St. Clair | Larry Baker |
| Stephany Harper | | Wenwen Du | Jason Barr |
| Anthony J Howard | | David Lewis | Duane Chapman |
| Paul Peck | | Brian Perkins | Clay Chesser |
| Jason Phares | | Crystal Smith | Chris Cosner |
| Shelly Ratliff | | Leslie Ward | Shara Curry |
| Chelsea Stickelman | | Jason Yeager | Wenwen Du |
| | | Jong-Hoon Yu | Dwight Heaster |
| | | | Marisha Lecea |
| | | | Johnathan Minton |
| | | | David O'Dell |
| | | | Matthew Thiele |
| | | | Kelly Treece |
| | | | Art Tremble |
| | | | Joseph WooJong-Hoon Yu |
| | | | Gary Morris, Adm. Liaison |
| | | | |
| Financial Aid Appeals | Homecoming | International | Institutional Review Board |
| Stephany Harper, Chair & Adm. Liaison | Membership not established | Membership not established | Membership not established |
| David Bailey | | | |
| Jenny Boggs | | | |
| Lloyd Bone | | | |
| Ann Reed | | | |
| Dennis Wemm | | | |

Committee Membership – 2017-2018

| Judicial Council | Library Advisory Committee | Promotion & Tenure | Scholarship Committee |
|----------------------------|-----------------------------------|-------------------------------|-----------------------------------|
| Membership not established | Gail Westbrook, Chair | Lloyd Bone | Marty Carver, Chair/Admin Liaison |
| | Shara Curry | Shara Curry | Gary Arbogast |
| | Art DeMatteo | David O'Dell | Stephany Harper |
| | Jane Friedmann | Fred Walborn | David Hutchison |
| | Rico Gazal | Alison Witte | Jason Yeager |
| | Travis Gibson | Kevin Evans, alternate | |
| | Melissa Gish | | |
| | Tim Henline | | |
| | Jeff Hunter | | |
| | John McKinney | | |
| | Art Trimble | | |
| | Gail Westbrook | | |
| | Cheyenne (Nicole) Williams | | |
| | Dana Wilson | | |
| | Gary Morris, Adm. Liaison | | |

| Staff Council | Student Government Association | Student Life | Retention Committee |
|-----------------------------|---------------------------------------|-------------------------------------|----------------------------------|
| Rachel Adams, President | Jodi Walters, Adm. Liaison | Rusty Vineyard, Chair, Adm. Liaison | Gary Morris, Chair/Admin Liaison |
| Michele Lang | Cameron Woods, President | Stacy Adkins | Adam Black |
| Jenny Boggs | Justin Woods, VP | Melanie Anderson | Bridget Carr |
| Adrian Duellely | AJ Howard, Secretary | Jerry Burkhammer | Megan Darby |
| Mandy Wiant | Reed Ratliff, Treasurer | Amanda Chapman | Taylor Gibbons |
| Jim Tatman | Colton Ring, PR | Melissa Gish | Jason Phares |
| Jenny Boggs | Cody Moore, Parliamentarian | Avan McHenry | Fred Walborn |
| Sheri Skidmore | | Justin Rader | Cameron Woods |
| Chelsea Stickelman | | Reed Ratliff | |
| Rick Walsh | | Colton Ring | |
| Deb Nagy | | Jodi Walters | |
| | | Scott Wentz | |
| Krystal Smith, Adm. Liaison | | Ed Wood | |
| | | Justin Woods | |
| | | | |

