

# The Glenville Mercury

Vol. XXV. No. 21.

Glenville W. Va.

Wednesday, March 24, 1954

## SC Election Dates Changed; To be Held April 13 and 14

Because of a conflict with the Easter holiday recess, the Student Council election date has been shifted to Tuesday and Wednesday, April 13 and 14, according to Council President Paul Lanham.

Two other important announcements were made following last week's Student Council meeting. One was a measure that would appoint a committee of seniors to assist the Council in the conduct of the election and the other was a move to hold the election in the administrative building from 9 to 1 on the first day of the election, April 13.

The balance of the voting on April 13 and the entire balloting on April 14 will be conducted in the Student Union.

The deadline for filing for office has been set at one week from tomorrow, April 1. Two weeks from tomorrow, April 8, the Council will hold an assembly at which time the candidates will be introduced and permitted to say a few words.

President Lanham said he believed the holding of the election in the Administration building on April 13 would give many non-resident students a better opportunity to vote.

## 5 State Meetings Scheduled for Coming Spring

Five state meetings are scheduled for the coming spring at Glenville State.

The regional high school Speech Festival will be held here Saturday, March 27 in the auditorium.

The Conference of Central West Virginia Supervisors will meet here in the recreation room of the Health Building April 2.

On April 23, the Future Teachers will hold their regional conference in Louis Bennett lounge.

The regional Band Festival will be held April 24, and many of the schools of the state will participate.

May 6 is the day chosen for Senior Day on campus. This day is set aside each year so that the seniors of the surrounding high schools may visit Glenville State in order to see the existing college life.

## Prof. B. B. Bell Plans Europe Tour With Study Abroad Inc.

By Willard Smith

After teaching the first term this summer, Prof. Bessie B. Bell will leave New York by plane for Amsterdam, Holland, for a 50-day grand tour of Europe.

Arranged by Study Abroad Inc., this special history studytour of Western Europe will be personally conducted by Dr. Ruth Scarborough, professor of history, Shepherd College, Shepherdstown.

Planned for a select group of 20 to 30 persons, this tour may be counted as six semester hours of graduate credit. Lasting 50 days, during which most of the countries and many of the major cities of Europe will be visited, the tour will start July 12 when the party leaves New York by plane to Holland and ends August 31 when they arrive in New York after an ocean voyage from England.

This course is a field survey of the evolution of the Western world from the dawn of history to the present. Attention will also be given to the most interesting educational practices found in the various countries of Europe.

### Amsterdam Stop

After landing in Holland, the party will drive to Amsterdam. Six days will be spent in visiting Amsterdam, the Hague, Antwerp,

## Spencer 50-Voice Chorus to Perform Tomorrow at Chapel

Karl V. Brown, a graduate of Glenville college and now the music director at Spencer high school, will present his 50-voice chorus in the assembly program tomorrow morning. Director Brown is popular with his students, and is fondly called "Doc". Under his direction music organizations at Spencer high school have won state recognition for their outstanding performances.

American folk tunes, spirituals, numbers by the boy's chorus, a Barber Shop Quartet, and a cornet duet will be the special numbers presented in the morning program.

Some of the songs the chorus will sing are: "O Rejoice Ye Christians Loudly"—Bach-Wilhauser; "We Adore Thee, Lord God"—Palestrina; "Sing and Rejoice"—Will James; "When Jesus Lived In Galilee"—Arr. by J. J. Niles; "Soldiers Of God"—Machan-MacLean, and "These Things Shall Be"—Rhea.

## Prof. Warden Lane Reveals Positions For Bus. Ad. Seniors

Professor Warden Lane has revealed that graduating seniors who have had training in business administration, and possible training in college work in agriculture, may obtain a retailing sales position with the Southern States cooperative.

The positions which are open include retailing sales of feed, seed, fertilizer, and farm supplies in one of the local farm supply cooperatives.

If any senior boy would like a job with possibilities of advancement, he is urged to get in touch with Dean Robert Higgins who will arrange for that person to have an interview with a company representative. Prof. Lane stated that he could give any student interested in the position, information on the Southern States cooperative and the wage scale which they pay employees.

## Kappa Sig Kappa 8th Easter Dance Apr. 10 in Old Gym

The eighth annual Easter dance, sponsored by the Kappa Sigma Kappa fraternity, will be held April 10 in the old gym. The dance band to play for the semi-formal affair has not been selected although two well-known bands are under consideration.

The dance floor will be decorated in purple and gold, the official colors of the fraternity. Advance tickets will be sold at \$1.50 per couple.

President Harold Hissam made the following statement concerning the dance: "We have had a large turnout each year for the dance and we can see no reason why the dance this year should not produce a record attendance."

In charge of publicity are Paul Lanham and Gail Boggs. This year, posters will be displayed throughout the county and in surrounding towns. The dance is open to everyone whether they be students of Glenville State College or not.

Full information about the dance will be given in next week's Mercury.

## Union 'New Look' Completed; Juke Box, Telephone Added

By YVONNE HART

The student union has taken on a "new look" during the past few months, and much alteration has taken place. New paint, increased floor space, a kitchen, and new storage space—these are among the noticeable changes. Along with these new phases of remodeling, the student union has a new manager, Elmer Takach. A new juke box which plays 48 records has been installed, and a postage stamp machine has been ordered, according to Manager Takach. These modern improvements are quite noticeable when compared to the other years since the union was established. Established 1947

The Club Pioneer was established in the latter part of 1947. Student Council proposed the idea, and the Holy Roller Court volunteered to advance a \$300 loan to the Student Council for the equipment necessary to get started. Professors A. H. Anderson and Clarissa Williams served with students, Kathryn Rose Elliot and Robert Higgins, on the

## 'Foxes' Gross \$200; 600 See Production

That the recent Ohninghow production, "The Little Foxes" was well received by the local townspeople and students is attested to by the large crowd who turned out to see it and by the general comments heard after the performance.

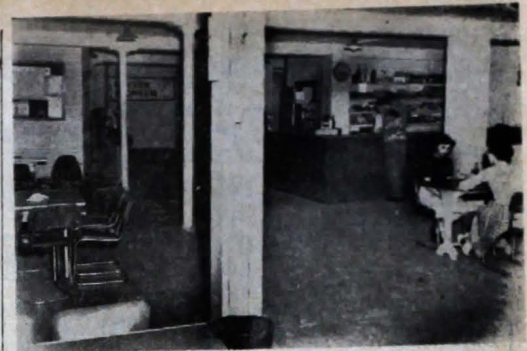
The total attendance was more than 600 people. Of this number, 258 were college students, 251 were high school students and the remainder adults. The total admission collected was close to \$200.

Prof. Ruth Johnson, director, wishes to take this opportunity to extend her sincere thanks to all who helped to make the production a success.

## 11 Students Seek Nicholas Positions

Eleven Glenville students were interviewed for teaching positions in Nicholas county last week by county superintendent Harry Staley and assistant Oakford Ditz.

Granted interviews were Retha B. McAvoy, Bill Phelps, Richard Hoover, Leonard Tyree, Dorothy Light, Jean White, Patty King, Irene Rose, Laura Grey McClung, Paul Lanham, Seibert Gregory.



RESULTS of a remodeling project on the Student Union can be seen in the above photo. The Union was enlarged considerably by the addition of space formerly belonging to the girls' locker room. The old portion extended only to where the juke box is now located. Since Manager Elmer Takach has taken charge, a new juke box and a public telephone have been added.

—Mercury staff photo by Jack Cawthon

## SU Stock Drops; Total Now \$604

Apparently the nation-wide recession has gained a foothold on the Glenville campus as figures released this weekend by the Student Council revealed that the Student Union has been in a steady financial tailspin since May of 1953. With a total worth of \$1,466.41 on the last day of May, 1953, the Union's total worth has declined to such an extent that it was worth only \$604.72 on Feb. 17 of this year.

The Council, making a detailed study of the Union's ledgers of the past three years, informed the Mercury that they are making every effort possible in order to check the trend that is threatening to bankrupt the Union. There was a hint that the first step toward this objective would be a drive to collect outstanding bills owed the Union by members of the student body.

During the 1951-52 school year the Union enjoyed greater financial success than it has in any year since that time. Under the directorship of Bob Mottice, the Union's total worth was raised from \$480.16 in September to \$1,325.35 at the end of the school year, a boost of almost \$900.

### Ten Managers

There have been ten managers thus far. Charles McElwee, the first manager, served in 1947-1948. Other managers and their years of duty are: 1948-49—Mrs. Steve Dishauzi; 1949-50—Mrs. Glenna Vannoy, Mrs. Robert Hardman; 1950-51—Miss Georgia Reed; 1951-52—Robert Mottice; 1952-53—William Radcliff; 1953-54—Maurice Buck, Stephen Rohr, Elmer Takach.

The student union has been, since its establishment, a popular center for between-class refreshments, get-togethers with friends, and in general, a hangout for all college students. It is located in the basement of the old gym, and has available candy, soft drinks, ice cream, tobacco, and records suitable for dancing.

Although the Union did not progress as well as it did the previous year, the 1952-53 accounts show that the total worth was again raised, this time over \$300.

Since 31 May 1953, however, the Union's total worth has declined at a steady rate, with the latest figures, February 17, revealing the Union's total worth at \$604.72, a drop of over \$800 since the peak was attained last May.

Another decline was noted in the average monthly labor costs. During Mottice's "boom" year of 1951-52, the cost of labor averaged \$133.40 per month. Last year this average jumped to a \$144.78 monthly average; but during the first five months of the 1953-54 school year the average labor costs has dropped to \$125.12, the lowest level of the three-year period.

## William and Emily Muir Are Lyceum Speakers April 1, 2

By KATHRYN FARMER

William and Emily Muir, an interesting husband-and-wife art team, will demonstrate their media to the students of Glenville State College April 1 and 2 when they make an appearance here.

Mr. Muir, a sculptor, specializes in wood carvings. Many of his forms are inspired by his observations of plant life. When giving explanations about procedures in wood-carving, Mr. Muir suggests that a good supply of wood, preferably mahogany, be kept on hand so that one's mind might be open in order to seek the possibilities hidden in each piece.

To get the general idea of how the tools should be guided, he suggests drawing on the wood with chalk. Once the idea in one's mind unites with the size and color of the wood, the biggest problem is solved. The remaining problem is the skill and know-how.

Mrs. Muir, who prefers the medium of oils, expresses the belief that anyone can cultivate appreciation of his natural surroundings by

learning to observe the manifestations of form, composition, and color. She believes that any artistic expression adds up to something, and that it is better to produce something than nothing at all. "Any person's best is never worthless."

Mr. and Mrs. Muir will appear in an assembly Thursday, April 1, and will have as their program, portrait demonstrations.

In the Lyceum program Thursday evening at 8, Mr. Muir will present a demonstration in wood-carving, and Mrs. Muir will create a painting.

Following the Lyceum program, a reception will be held in Louis Bennett lounge. Students, appointed by Prof. Julia Nutter to assist Prof. Helen Brammer in arranging the reception, are Wanda Lorraine Taylor, Shirley Chancey, and Barbara Wright.

During the two-day appearance, a full scale exhibition of sculpture, carvings, sketches, and paintings in oil and water-color will be in Louis Bennett lounge.



PROF. B. B. BELL

Burges, Gent, and a great many places of interest in Holland and Belgium. Then the group will travel to Paris.

A week will be spent in seeing the places of interest in Paris, Chartres, Versailles and surrounding country, then the group will leave by train for the French

(Continued on page 2)



## The Student Union

1 Sept., 1953 — 18 Feb., 1954

Date	Total Assets	Total Liabilities	Total Worth	Reported Profit
1 Sept. 1953	\$1237.43	\$225.14	\$1012.29	\$
30 Sept. 1953	1545.15	375.28	1169.87	34.10
31 Oct. 1953	1525.57	243.53	1282.04	
30 Nov. 1953	1585.47	686.13	899.34	103.61
31 Dec. 1953	1567.55	638.67	928.88	29.55
31 Jan. 1954	1347.63	380.83	966.80	38.42
18 Feb. 1954	985.55	380.83	604.72	

### RESUME OF PREVIOUS YEARS

1951-52				
1 Sept. ....	480.16		480.16	
31 May ....	1325.35		1325.35	758.95
1952-53				
1 Sept. ....	1124.80		1124.80	
31 May ....	1527.65	61.21	1466.41	303.58
1953-54				
1 Sept. ....	1237.43	225.14	1012.29	
18 Feb. ....	985.55	380.83	604.72	205.68

### HOW THE TOTAL WORTH OF STUDENT UNION HAS DWINDLED

Date	Total Worth
1 Sept. 1951	\$ 480.16
31 May 1952	1325.35
31 May 1953	1466.41
1 Sept. 1953	1012.29
18 Feb. 1954	604.72

## ADE Business Frat Awards H. S. Senior Tuition Scholarship

Tuition scholarship will be awarded next year to a high school senior by the Alpha Delta Epsilon. The fraternity plans to make this an annual affair.

This scholarship will be presented to a high school senior from West Virginia who is interested in business education at Glenville State College. Some of the qualities that the fraternity will consider in selecting the student are scholastic average, leadership, personality, interest, and initiative.

By selling donations on a \$25 war bond, the fraternity plans to appropriate funds for this scholarship. Donations are now being sold by the members. In addition, one free donation will be given to each student and each faculty member by the fraternity. The free donation may be obtained from a member of the Alpha Delta Epsilon at the present time.

Various committees were appointed at the last meeting of the fraternity. Committees appointed were scholarship; Patty Sumpter, chairman, Elaine Bell, Olga Pashkevich, and Marv Helen Somerville; assembly, Clara Mae Hull, chairman, Vanda Bird, Patty Sumpter, and Martha Ann Marsh; student mix, Mary Helen Somerville, chairman, Richard Tolliver, John Jamison, and Vanda Bird.

## Glenville Non-Grads Urged to Contact Alumni Directory

Prof. Bessie B. Bell, collector of data for the Alumni directory is requesting aid in compiling the names of former students for the Alumni directory. During the past few months Professor Bell has been endeavoring to obtain certain information pertaining to Glenville graduates, both College and Normal.

The project has progressed to the point where she is now undertaking to obtain addresses of every former student who did not graduate. If you know the complete address of any former student long but out of touch with the college, send it to Prof. Bell. Also the Alumni office would appreciate it if former students would report any change of address.

### SOCIAL CALENDAR

- March 25 — Assembly-Spencer High School Chorus.
- March 26 — End of the third term.
- March 27 — High School Drama Festival.
- March 28 — Vespers-Louis Bennett Lounge, 6:15 p. m.

## 5 Area High Schools Invited to March 27 Regional Competition

The West Virginia Regional drama festival will be held Saturday, March 27, in the Glenville State College auditorium. Prof. Ruth Johnson has announced. The performance will start at 10:30 and will last through the afternoon. There will be no admission charge, and the public is invited to attend.

High schools participating in this year's drama festival are Gassaway, Ravenswood, Spencer, Wirt County, and Walton. Each of these schools will present a one-act play ranging from comedy to heavy drama.

Prof. Hunter Whiting will act as critic-judge and will choose one of these plays which will be entered in the West Virginia High School drama festival at Morgantown, April 1-2-3.

Prof. Johnson and the Ohm-ni-gohow Players will be the hosts, and the members will assist with the stage property.

## Childcraft Agents Address Hamrick's 301 Education Class

Mrs. Lucille Edwards and Mr. Jim Eberly from Charleston were on campus recently demonstrating the Childcraft series of books to Prof. Carl Hamrick's Education 310 class. She explained to the class the proper use teacher's could make of these books.

Mrs. Edwards has been working at this type of work for 17 years. She visits public schools, colleges, and homes. She said that the Childcraft book series were a good readiness program for getting children ready for school.

Childcraft is a 14 volume library built on a three fold basis; children's literature, activity units, and guidance.

The cost of this series including all the services for teachers such as lesson planning, and units of work for different parts of the year was \$79.50. Orders for this series of books were taken by the representatives.

## Kindergarten Group Hold March Meeting

The March meeting of the Kindergarten Parents will be held at the home of Mrs. Andrew Whiting. Mr. and Mrs. Richard Stanley will talk on the subject "What Your Child's Play Means." This discussion will be followed by a social hour.

Virginia Phillips, senior elementary major from Harrisville, will care for the children that attend the meeting at Mrs. Whiting's home.

## Frat Chat

By JOHN CUTLIP

**HOLY ROLLER COURT:** Judge Merriman reported that the group voted to postpone the annual Fun Nite until March 23.

Names of prospective pledges were brought up but, voting will not take place until two weeks before pledging period.

Trophies that were presented at the class tournament were sent off to get engraved. Also, orders were sent in for Holy Roller Court pins.

The Court has contacted various bands to play for the annual Court Ball. Steve Rohr made a trip to Huntington last Saturday to contact representatives from various bands.

John Short was named to head the advertising committee for Fun Nite. Steve Rohr was named master-of-ceremonies for the event.

**SIGMA TAU GAMMA:** President Milligan reported that the fraternity discussed plans for the annual spring outing. Lake Riley, Holy River State Park, and White Sulphur Springs were sites discussed for the affair.

The chapter voted to hold a party at the Recreation Center. No date has yet been set.

Names of prospective pledges were brought up. It was decided to vote on them at the next meeting.

**KAPPA SIGMA KAPPA:** New members presented their paddles to the "Big Brothers" with the result that Fouty has to make a new paddle.

President Hissam stated that pledges were discussed but no definite action was taken.

Souvenirs for the Easter Dance were distributed to the members. Reich and Popp were appointed to sell sandwiches in the dorm last night.

Kent Duffield received special honors because of his birthday.

## Rastle, Marley, Coe Win WAA Tilts

Four thrilling games and two forfeits were the results of WAA basketball games Tuesday, March 16. Coe won by defeating White, Marley won over Smith, Rastle over Marley and White, and two games were forfeited.

The most exciting games was probably the Rastle vs. Marley tilt. The final score was 48-45 in Rastle's favor. Latham led the winners with 23 points, and Wright was next with 20 points. For the losers, Bush was high scorer with 23 points, also.

Radcliff set a record as the night's top scorer by chalking up 29 points for Marley's win against Smith. The score of this game was 65-45. Bush followed Radcliff with a close 25 points. Cooper led the losers with 23 points.

In the White vs. Coe game, Coe won 36-28. Bourne marked up 17 points for Coe. She was followed by her team mate, Coe with 3. Pickens and White tied for first place for the opponents with 12 points each. Latham again became high scorer with 22 points when Rastle's team defeated White 45-18.

## Prof. B. B. Bell

(Continued from page 1)

Riviera. After a day here the party will travel to Monte Carlo and follow the Mediterranean seashore via Genoa to Rome.

**Two Weeks In Italy**  
The Sistine Chapel, St. Peter's cathedral, leaning tower of Pisa, Venice and its canals, and other historic places in Italy will occupy the party's time for two weeks. Then the party will travel north to Switzerland.

Five days will be spent in Switzerland before the group goes on to Germany. Here, after traveling down the Rhine river to Bonn, the capital of West Germany, they will meet U. S. and German officials for a discussion on the problems of post-war adjustments. Landing in England August 18, the travelers will spend five days in London, Stratford-on-Avon, and Oxford. On August 23, at Southampton, the party will embark on the liner Castel Felice for New York.

## 400-PIECE DISPLAY

## Ex-FBI Man, J. C. Musser, '39, Joins C&O at Richmond, Va.

J. C. Musser, Jr. has recently been appointed by the C & O railroad as a special agent in Richmond, Virginia. Before joining the C & O he was associated with the Federal Bureau of Investigation. He was appointed as a special officer at Huntington in 1942, and until his promotion he was assistant special agent at Charleston.

He received his degree in social studies and English from Glenville State College in 1939. During his college days he was a member of the basketball team for two years and the football team for three years. He participated in three operettas and was associated with the Canterbury Club, G-Club, Holy Roller Court, Current Events Club, Gym Club, and the Mercury staff.

He was an honor student, and during his freshman year he served as vice president of his class, representative on the social com-

mittee, and was elected as an outstanding member of his class.

Marlene Dotson, has been elected vice president of the Home Economics Club at Marshall college. Marlene is from Pennsboro and is a transfer student from Glenville State College. During her two years at Glenville State she was a member of the Xi Beta Tau, Band, and Choir.

Dr. Charles P. Harper, former social studies teacher here, has written an article on the Marshall College Americanization Program. The article appeared in the January edition of the I and N Reporter, a publication of the Immigration and Naturalization service.

Dr. Harper is now professor of political science and director of the Americanization Program at Marshall college. He is the state's representative to the national conference on citizenship.

## Sorority Simmerings

By ELAINE BELL

### Kappa Chi Kappa

Members of the sorority decided to change bands for the April Showers dance. The band formerly scheduled has been cancelled and another band has been chosen. The name of the band will be announced later.

President Norene Westfall appointed members for the sand-wich committee for this week. Members are: Nancy Harris, Karen Kenny, June Drake, Shirley Chan- cey, Wyne Bush, and Barbara Given.

Nancy Harris and Alice Anne Griffith were appointed to be co-captains of the sorority basketball team for fun night.

President Westfall announced that sandwiches will not be sold at the men's dormitory after this week due to new facilities in the student union for sandwiches.

### Xi Beta Tau

Final plans were made for the Sock Hop during the regular meeting of the sorority. President Nora Ann Kennedy announced the time schedule for decorating the old gym.

The sorority received their plaque which has been placed in the student union. It is a replica of the sorority pin, which is diamond shaped, surrounded by pearls.

## College Play Host To Spencer Chorus

A luncheon to be held in honor of the Spencer high school chorus will be given tomorrow morning at 11:30 in Kanawha hall dining room. Menu for the luncheon consists of steak, mashed potatoes, gravy, buttered peas, celery, carrot strips, rolls, butter, jelly and milk.

Those aiding in preparation of the meal are Professor Helen Brammer, dietitian; Mrs. Opal Lynch, Mrs. Lucille Self, Mrs. Edna Self, Mrs. Betty Murvine, Mrs. Edith Hardwick, Mrs. Gwendwin Lake, Miss Frances Gillespie, cooks; and John Cutlip and Robert Cutlip, dishwashers.

## THE GLENVILLE MERCURY

Student Newspaper of Glenville State College, Glenville, W. Va. Published each Wednesday during the academic year except holidays by the classes in Journalism at Glenville State College. Entered as second class matter November 23, 1929, at the postoffice at Glenville, W. Va., under the act of March 3, 1879.

TELEPHONE 6301

Editor	James E. Robinson Jr.
Business Manager	Charles Zakarian
Assistant Business Mgr.	Thomas Hyer
Sports	Jack Sizemore, John Cutlip
Circulation	Wanda C. Taylor, Nora Ann Kennedy
Literary Editor	Freda Peters
Alumni	Edna Marie Yoak
Art Editor	Jack D. Cawthon
Society Editor	Betty Joyce Cooper
Reporters	Elaine Bell Jean Ingham, Yvonne Hart, Kathryn Palmer, Willard Smith.
Adviser	E. B. Elder

## Satterfield Gets National Rating; First GSC Official

Leola Satterfield, senior, became the first female student from Glenville State College to become a nationally rated official by taking a test Saturday, March 13. The test was given at Huntington, according to Prof. Clarissa Williams, physical education instructor, who accompanied Leola to Huntington. The test was given by the National Section of Girls' and Women's Sports for basketball officials. Leola received a national rating, and is now eligible to officiate anywhere in the United States.

Leola, daughter of Mr. and Mrs. W. H. Satterfield of Glenville, is a physical education major. Her other field is biology. She is a member of WAA.

The test which she took consisted of a written test, oral test, and a practical test in which she refereed and umpired. In order to complete the test, it was necessary to make a score of 80 or above on the written test.

## Betty Rollyson Is Bride of Harry Owens, '53

Announcement has been made of the marriage of Betty Lou Rollyson to Harry Elverson Owens, Jr. of Parkersburg.

The bride, a graduate of Marietta High school, attended Mountain State college at Parkersburg. Mr. Owens was graduated from Glenville State College in 1953.

While on campus, Owens was active in International Relations club, Future Teachers, Debate team and Wesley Foundation.

He is now principal of Stanleyville, Grade school in Stanleyville, Ohio.

## Daniell Chevrolet, Inc.

Glenville Phone 6221



# Wave Opens 14-Game Baseball Card April 8

## Runner-Ups to Falcons in '53, Pioneer-AB Basketball Series Most Popular For Second Straight Season; M-H Second

By JOHN CUTLIP

Strike one! "Spring has sprung" and once more baseball takes the spotlight in spring athletics at Glenville State College. April 8 is the opening date for the 14-game schedule which Coach Carlos Ratliff will guide his Pioneers through.

The first game of the season will be played on the road as the diamondmen travel to West Virginia Tech to do battle with the Bears. The 14 games to be played shows a 3-game increase over the 11-game card that was scheduled last year, but which only eight were played because of rain.

The Pioneers will be out to grab the West Virginia Intercollegiate Conference crown after missing it last year when they placed second under the Falcon team from Fairmont. With Coach Ratliff returning to the coaching helm after a 3-year absence, and with the aid of the conference winning pitcher, Bob Poole, the Pioneers stacked up one of the best records in Glenville State College's baseball history. It was felt by many that, if the Pioneers hadn't been rained out so many times and the ace pitcher hadn't been out of the line-up for two games because of illness, the Ratliffmen would have won the conference with flying colors.

### High Averages

The '53 team piled up a tremendous number of individual and team records besides placing second in the conference. In team statistics, the Pioneers were fourth in the conference in batting with an average of .250. They were fourth in fielding with a .925 average after having put out 204 men in eight games along with a high 92 assists. However, 24 errors committed held the percentage down.

Individual honors show Bob Poole leading the conference in pitching by winning five out of five for 1,000 average. Poole struck out 51 men in 43 innings of play, which was the second highest number of strike-outs in the conference. He also led the team in batting in five games with an average of .421 which was third highest in the conference. He also played errorless ball.

### Lanham Strong Batsman

Lanham was second in batting average with a .321 percentage in eight games. This was sixteenth high in the conference. The Pioneers had a great defensive player in the catcher, George Cook, who had a fielding average of .973 in seven games. He put out 61 and had 12 assists along with two errors. He was third in the conference in the category of catcher's fielding. Ridel was third in the conference in second basemen fielding. Merriam was fourth in the shortstop's slot, and Floyd was eleventh in the outfield.

### Poole Blanks Salem

One of the more thrilling games played by the Pioneers was their season opener 3-1 tromping of West Virginia Wesleyan. The game, played before a Senior Day crowd, was a great thrill to Coach Ratliff, who after being absent from the coaching ranks for three years, saw his men play errorless ball to down Glenville's closest rival, the Bobcats.

Another thriller was the 10-0 shutout pitched by Poole over the Salem Tigers. He struck out nine, and gave up only three singles while every man on the Pioneer team hit safely with "Ed" Tekiel hitting a home run.

### Falcons Win

The poorest showing made by the Ratliffmen was a 21-6 lashing received from the conference champs, Fairmont. Without the



COACH RATLIFF

## Second All-WVIAC Award to Tennant By League Mentors

Glenville's fiery basketball ace, "Dynamite" Jack Tennant, who only last week was named to the WVIAC player's all-conference team, received further honors this week when the conference coaches named him to a forward slot on their 10-man unit.

This completes the cycle for Tennant, who was named to the all-conference football team last fall on the basis of his great passing performances which placed him among the nation's leaders. Although only a junior, Tennant has long since established himself as probably the finest all-around athlete to play here in recent years. The Fairview native has established records in both football and basketball and is now aiming at the most important mark of his collegiate career, Bob Hardman's career total of 1,894 points.

stolid pitching of Poole, the Pioneers proved very ineffective and nervous before a "Nate" Rohrbough Day crowd of several hundred coaches and athletic directors. Out of the 24 errors committed during the season, 10 were made in this game.

The 1954 schedule, as announced by Coach Ratliff, is as follows:

April			
8 W. Va. Tech	There		
10 Davis Elkins	Here		
13 W. Va. Wesleyan	Here		
22 Salem	There		
24 Fairmont College	There		
27 W. Va. Wesleyan	There		
29 Morris Harvey	Here		
May			
1 Concord College	There		
6 Salem College	Here		
8 Concord College	Here		
13 Alderson Broadbuss	There		
15 Fairmont College	Here		
19 Alderson Broadbuss	Here		
22 Davis Elkins	There		

### Weber's Dairy

Weston, W. Va.

Pasteurized and Homogenized Milk  
Coffee Cream, Whipped Cream, Cottage Cheese  
Chocolate Milk  
Use milk sealed with the Metal Cap for your Protection

Your Headquarters for Late Snacks

**R. B. STORE**  
Glenville

For the second straight season, Alderson-Broadbuss proved to be the biggest drawing card on the Glenville basketball schedule. Packing in 529 persons to a Tuesday night game, the second-place Battlers posted a slim margin of 21 over Marietta's Ohio conference champions. Last season, Alderson-Broadbuss drew 566 patrons to the local athletic plant.

Although the seasonal total went up to 5,114 over the 1952-53 figure of 4,109, there were 14 home dates this season as compared to only 11 last year. Actually, the average attendance this season was below last season. During the recent campaign the average home crowd was 365 while a season ago it was 373.

Conference champions Tech could not do better than eighth place on the Pioneer attendance scoreboard, behind such league doormats as Shepherd, Wesleyan, and Potomac. Third place in the league standings, Salem's rejuvenated Tigers placed third in Glenville drawing power as well.

### 1,000 See Battlers

During the past two years only arch-rival Alderson Broadbuss has played before 1,000 fans in the local field house. Crowd-pleasing Morris Harvey finished just short of the mark with 993. The two-year home-game total for Glenville is 9,223 an average of 368 per game.

It is interesting to note that last season's paid admissions were greater than the number of student activity tickets collected, while this season, student attendance has been more than one thousand greater than the paid admissions. Paid admissions dropped 102 from the 1952-53 level while student attendance improved more than 50 per cent over the same period.

### Saturday Best Night

Saturday was the biggest night for basketball this season. With four playing dates, Shepherd, Wesleyan, Morris Harvey, and Marietta, the Gee Men drew 1,791 fans, an average of 448 per game. Although Saturday night drew the season's largest crowds it ranked no better than fourth in student attendance.

Tuesday evening proved to be the most suitable for the student body with an average of 270 attending the five scheduled contests. Wednesday was next with 254, followed by Monday with 236, Saturday with 216, and Friday with a 168 average.

Saturday was the overwhelming choice of off-campus fans with an average of 231 for the four attractive week-end contests. Tuesday was a distant second with 142 average. **Football Gate Improves**

The basketball attendance followed the trend of the 1953 home football games. Last season 2,078 attended the three home grid contests, not including the home game played at Weston, as compared with 1,705 a year ago. In 1953, the Gee

### MINNICH FLORIST

"Flowers for Every Occasion"

### Colleen's Beauty Shop

Glenville Phone 4961

## HOWES' DEPT. STORE

Quality Mdse. For The Entire Family

### BASKETBALL ATTENDANCE

	1953-54	1952-53
A-B	296*	233
Marietta (Ohio)	199	309*
M-H	179	308
Salem	258	200
Shepherd	218	200
Wesleyan	270	108
Potomac	250	119
Tech	263	92
Beckley	257	83
Fairmont	262	77
D-E	236	54
West Liberty	205	81
Concord	131	63
Alumni	40	123
1953-54 Totals	3,064	2,050
Game Average	219	146

	1952-53	1951-52
A-B	173	393*
M-H	186	320
West Liberty	149	295
Wesleyan	209	199
Tech	240*	164
Salem	213	181
Fairmont	215	159
D-E	204	160
Beckley	234	81
Concord	103	112
Alumni	31	88
1952-53 Totals	1,957	2,152
Game Average	178	196

\* Indicates highest attendance for that group.

### TWO-YEAR TOTALS

	1953-54	1952-53	Avg.
A-B	1,095	547	
Marietta	508	508	
M-H	993	496	
Salem	852	428	
Shepherd	418	418	
Wesleyan	786	393	
Tech	759	379	
Potomac	369	369	
West Liberty	730	363	
Fairmont	713	350	
Beckley	655	328	
Davis-Elkins	654	327	
Concord	409	204	
Alumni	282	141	
Total	9,223	368	

### Average Attendance By Days Of The Week 1953-54 Season

	G	Stu.	Pd.	Avg.
Monday	1	236	54	290
Tuesday	5	270	142	412
Wednesday	2	254	101	355
Friday	2	168	72	240
Saturday	4	216	231	448

Men played before an average of 199 students, 494 non-students for a 693 game average.

During the 1952 campaign the crowds averaged 170 for students, 398 for paid admissions, and a total average of 568. Also, the 1953 Homecoming crowd of 1,470 was almost 50 per cent better than the 1,035

who witnessed the 1952 classic.

	1953 Football	1952 Football
Shepherd	192	231
Potomac	284	1,186
Salem	106	***
West Liberty	121	64
Total	597	1,481
Game Average	199	494

\*\*\*Guarantee from the Weston J.C.

	1952 Football	1951 Football
Fairmont	135	156
Concord	215	820
Fairmont	161	218
Total	511	1,194
Game Average	170	398

## Put War Bonds on your shopping list

and remember that when you need a small cash loan you can depend upon this bank for personal consideration. All are treated with confidence

## Glenville Banking & Trust Co.

Friendly, efficient service

MEMBER FEDERAL DEPOSIT INSURANCE COMPANY

## PIONEER Theatre

Tues., Wed., Thurs.,  
March 23-24-25

**SUSPENSE!!**

ROBERT MITCHUM  
LINDA DARNELL  
JACK PALANCE  
**SECOND CHANCE**  
color by TECHNICOLOR

Friday, Saturday,  
March 26-27  
**DOUBLE FEATURE**

**ARENA** color  
AND  
YOUNG HAGEN  
RED SKELTON  
The Great DIAMOND ROBBERY

Sunday, Monday,  
March 28-29

The great South Pacific adventure!  
**Cooper**  
Return to Paradise  
TECHNICOLOR



# Lewis County Leader in Central West Va.

Jackson's Boyhood Home Located Near Jane Lew, Weston

(NOTE: This is the second of a series of articles in which the Glenville Mercury salutes the counties represented on the Glenville State College Campus. This week the Mercury continues the series by paying tribute to our neighboring community, Lewis county.)

By BETTY COOPER

Lewis county was formed from a part of Harrison county under authority of the act passed by the General Assembly of Virginia on December 18, 1816. The county government was organized pursuant to this act at the house of Reverend Peter Davies at Westfield, on March 10, 1817.

It takes its name from Colonel Charles Lewis, the bold and intrepid leader of the Virginia pioneers and defender of the border against the incursion of hostile Indians. He fell mortally wounded while leading his troops in the memorable battle of Point Pleasant on October 10, 1774.

Colonel Lewis was the youngest son of John Lewis, the pioneer settler of Augusta county and a brother of General Andrew Lewis, who commanded the Virginians at Point Pleasant.

The first settlement in what is now Lewis county was made in 1770 by John Hacker on the stream that now bears his name. He was joined the same year by John and William Radcliffe and the following year by Jesse Hughes, who was to make a name for himself as a scout and Indian fighter. The settlers came fast after 1771-72, though the pioneers were scourged by the fury of the Shawnees and other tribesmen from the west bank of the Ohio.

The county seat of Lewis is Weston. In 1816, when Lewis county was carved out of Harrison, the place where Weston now stands was practically a wilderness. There were some cleared spots here and there in the vicinity, but settlements were few and far between.

#### First Weston Settler

The first settler on the site of present day Weston was Henry Flesher; this was around 1784. Some Indians attacked and wounded Flesher, so he and his family moved to Hacker's Creek.

Henry Flesher owned the land on both sides of the river, and when a village commenced to form on the present site of Weston, it was called Flesherville. The first county court was held at West Field, five miles from Flesherville. A short time afterward, Lewis Maxwell, Elias Lowther, and John McCoy were appointed commissioners by the county court to select a new site for the county seat.

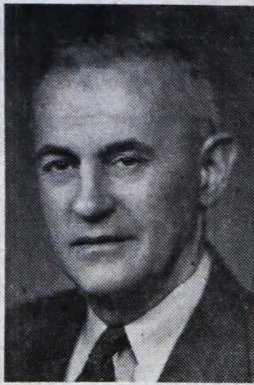
Flesherville was selected, and the ground upon which the present court house and jail stand was purchased from Henry Flesher for the sum of \$500. The name of the village was then changed to Preston, in honor of James Preston, who was once governor of Virginia. Then, in 1835, the name of the place was changed to Weston, and on Jan. 14, 1846, it became an incorporated town.

#### Bounded By Six Counties

The land area of Lewis county is 391.35 square miles. It is slightly north of the center of the state, bound by Harrison, Upshur, Webster, Braxton, Gilmer, and Doddridge counties. The county lies in the high, hilly section. It occupies a position intermediate between the Allegheny Mountains and the Ohio Valley.

In nearly all sections the hills are steep and the ridges long and narrow. Sand Fork of the Little Kanawha River leaves the county at an elevation of 770 feet and it rises from 1600 to 1800 feet at Buckhannon Mountain, Bald Knob, Cochran Knob, Pine Knob, Rush Knob, and Sugar Knob.

The magisterial districts are Collins Settlement Court House, Freeman's Creek, Hacker's Creek, and Skin Creek.



R. T. CRAWFORD

There are 42 voting precincts. The assessed valuation of property all classes, in 1951 was \$35,334,510. The population in 1950 was 21,074.

Leading industries and chief agriculture products in Lewis county

## Lewis Students Prominent in College History

Lewis countians have played important roles in the development of Glenville State College throughout the past eighty years. Not only has the county consistently supplied many of the students at the College, but the people of the county have always been ready to support "their" college.

Students from Lewis county have been outstanding in their leadership in student affairs as well as in scholastic ability. Some of the leaders in years past were William Boram, Jo Ann McNemar Richards, Julia Stalnaker, Juanita Green, August Kafer, Dr. Wade Stalnaker, James Marks, Nadine Clark Payne, Ralph Payne, Curtis Kiddy, Bill Stoneking, Denver Barnett, Kenneth Pratt, Arch C. Westfall.

More recently, the presidents of five campus groups boast of Lewis

are glass and glassware, petroleum, natural gas, lumber, livestock, dairying, hay and grain, and poultry.

county as their home. Noreen L. Westfall heads both the Kappa Chi Kappa sorority and the Future Teachers of America; Stephen Rohr is president of the freshman class; Vanda Lee Bird, president of Kanawha hall governing board; and Richard Hoover is the active leader of the Wesley Foundation.

A look at the list of graduates from Glenville State would find many of the present leaders in Lewis county. In the education field of the county, five of the members of the administrative staff have attended Glenville. In addition to Mr. Crawford, they are Clyde Strader, assistant supervisor of transportation; Juanita Brown, 4-H agent; and Eugenia Adams, county director of music.

The teachers of the county show a similar proportion of Glenville State alumni. At least 90 of the 147 county teachers have attended the College. Of these, 68 hold degrees from Glenville.

With the continued support of Lewis, and other counties in the

area which the College serves, the future of Glenville State College is assured.

Students from Lewis county now attending Glenville or who have attended this year are Richard G. Hoover, Noreen L. Westfall, Vanda Lee Bird, Barbara Ann Marley, Margaret Jean Reeder, William E. Rumbach, Betty Jo Simons, Earnest M. Snyder, Charles R. Craig, Dolores Genevieve, Elizabeth Genevieve, Donald E. Grove.

Clara Mae Hull, Patricia J. King, Martha Ann Marsh, Anna L. Radabaugh, Mary Jacqueline Rastle, Anna Jean Reese, Oscar Franklin Simon, Carina L. Simons, James L. Wilson, Robert L. Atkins, Carl P. Fulkus, Jerry A. Glover, Paul W. Green, Inez L. Lipps, Willard E. McNemar, Constance A. Marley, William O. Minger, Rita J. Pickens.

David C. Posey, Otis L. Reed, Stephen V. Rohr, Bobby Joe Smith, Rondall Lee Stalnaker, Charles W. Heater, John B. Angotti, Paul D. Heron, Al G. Kelley, and Carol Jean Rough.

## Lewis County Salutes Glenville State College

LEWIS County has played an important role in helping to Build Glenville State College into one of the finest teacher-training institutions in West Virginia. When the school opened for the spring term in April, 1873, it had as its first principal the Hon. Lewis Bennett, a native of Lewis County. Mr. Bennett saw the school through its first two crucial years, and established some of the philosophies which guided the school in the years following. Since then, many Lewis Countians have held administrative and instructional positions at the College.

ONE OF the reasons that Lewis County schools have consistently been rated with the top three counties of the State in teacher preparation lies in the availability of Glenville State College. Of the 147 teachers in the County, nearly 65 percent have attended Glenville. This has contributed to the fact that 137 County teachers have at least the bachelor of arts degree, with most of the remaining 10 well on their way to having their degree. There are no emergency teachers in the County, a situation which is unique in the State.

### Some of the Lewis Countians who are Attending Glenville State College



THIS ADVERTISEMENT IS SPONSORED BY THE FOLLOWING WHO ARE INTERESTED IN THE EDUCATION OF WEST VIRGINIA YOUTH

ADLERS  
DEPARTMENT STORE  
J. B. COX  
FURNITURE STORE  
G. C. MURPHY CO.  
HUB DEPARTMENT STORE  
SPECIALTY SHOP

FENNEY CHEVROLET CO.  
ANDREWS MOTOR CO.  
WESTON LAUNDRY  
DAVIS STUDIO  
CUMMINGS MOTOR SALES  
GEM FURNITURE STORE