

The Glenville Mercury

VOL. XXX No. 2

Glenville State College, Glenville, W. Va.

Wednesday, October 15, 1958

Sixty Scholarship Students Attend Classes at GSC

Glenville State College Scholarship Committee, composed of President Harry B. Heflin, Dean Delmer K. Somerville, Business Manager Lloyd M. Jones, Registrar Brown Trussler, Dean of Men Robert Higgins, and Dean of Women, Miss Pearl Pickens, has selected scholarship winners.

West Virginia Board of Education Scholarships, effective first semester 1958-59 were awarded to Garnet Boblett, Doris Conkle, Janice Davison, Ann Dessent, Martha Douglas, Charmaine Gunnoe, Bobba Arthur Hanifan, Freda Hatfield, Carol June Hawkins, Claris Hickman.

Doris L. Hosey, Mary K. Hull, Ann Rodney Lorentz, Walter Morehead, Dorcelene Page, Rachel Putnam, Delores J. Radcliff, Beverly Rogers, Joyce Rule, Marretta Russell, Rebekah Shawver, Sarah Jane Watson, Betty Wilson, and Willa Wells.

Benedum Gives

Claude Worthington Benedum Foundation Scholarships were presented to Janet C. Hall, Harry Hull, Margaret Rossi, Winona Ann Stewart, and Lulah Belle Waggy.

Clubs, organizations and individuals in home communities gave the following: Alpha Delta Epsilon of Glenville State College, Barbara Smith; Cabot Gas Company, Gene Rowe; Calhoun County Bank, Sandra Kimble; Charles S. Whiting Scholarship, Gerald Woolfer, George Hickman; Dr. Waitman F. Zinn.

(Continued on Page 4)

Student Council Names Committees

Student Council President Ray Ellis recently announced the appointment of various college committees to serve during the current school year.

Activities— Nancy Wilfong, Jim Cook, George Manlove, and Larry Stanley, Chairman.

Montrose Award— Carolee Singleton, Bob Gandee, Charles Watt.

Supreme Court— Emmett Wilson, Jr., and Sue Click.

Auditing— Al Livingston, Jim Dyer, Brenda Ball, and Mildred Nocida.

Assembly— Betty Selman, Martha Gwinn, and Steve Taylor.

Sue Criss Named

Library— Sue Criss, Jim Jones, Carolyn Dotson, Roger Stoner, John McDaniel, and Susan Lockard.

Who's Who— Leona Hampton, Jack Campbell, Jackie Millard.

Dining Hall— Virginia Davis, John Chipps, Paul Rippe.

Lyceum— Carolyn McCullough, Mary Rollyson.

Counting— Thelda Strader, Barbara Peaster, Bob Gandee, and Ann Dessent.

Athletics— Bob Eakins, Barbara Peaster.

Records— Sue Johnson, Emmett Wilson, Jr., Steve Ferguson, and Betty Lou Sisk.

Barter Theatre Presents 'The Reluctant Debutante'

Actors Will Open Lyceum Series

By ANN DESSENT

The Barter Theatre is returning to Glenville State College. After an absence of several years this outstanding group of professional actors and actresses will appear here again.

The play is "The Reluctant Debutante" and curtain time is 8:15 p.m. on Oct. 20. This charming and witty comedy by William Douglas Home ran for nearly two years in London; the New York performance was equally successful.

Diane Hill is starred in this blithe satire of a fading social custom, playing the role of the busy mother trying to steer her daughter, played by Carolyn Condron, into a good match. The mother is alarmed because her daughter considers debutante parties and the young men at them boring and ridiculous.

Ned Beatty plays the relaxed, quizzical father. James E. Brodhead and Mitch Ryan will be seen as the daughter's two suitors, both with the first name of David.

Mitch Ryan, an assertive, knowing talent in the theatre, has just completed a featured role in Robert Mitchum's picture, "Thunder Road." He was selected by Miss Esthel Merman as the most outstanding young actor at New York auditions.

The Barter Theatre dates back to 1932 during the long lean days of the depression. Robert Porterfield, finding himself another Broadway actor without a job, came up with an idea original in show business. His idea was to set up a theatre for which admission would be paid in produce-produce of any kind.

(Continued on Page 4)



CAROLYN CONDRON



MITCH RYAN

College Broadcast Observes Birthday

Glenville State College celebrated its first year on the air (over WHAW, Weston) Sept. 27. For the past year Glenville students have been broadcasting campus news, activities and special features. Plans to broadcast over WPDG, Clarksburg, are now completed. Student directors for this semester are Gary Fields and Rod Oldham.

Recent broadcasts have been interviews with Nick Murin, football coach, and with foot ball players; a Jazz concert by the 8 G's; and an interview with Miss Clarissa Williams, associate professor of physical education.

Coming soon on the air will be a news and features program, an interview with Mrs. Fest, college nurse; and a play "Courtship and Early Death" by William S. E. Coleman. Volunteers are needed for announcing and crew work. If any organization wants to broadcast, see Gary Fields or Mr. Coleman.

M. Ratzer is FTA Chapter Candidate

Margaret Ratzer, senior from Alpena, has been selected to represent Glenville FTA Chapter in the annual W. Va. Future Teacher Contest. Miss Ratzer, an elementary education student, is president of the local club.

Patty Mace, sophomore from Weston, served as the official FTA delegate at the annual W. Va. SNEA - FTA Delegate Assembly and Conference at Jackson's Mill, Oct. 3-5. Berna Shawver, secretary of the club, also attended the annual Delegate Assembly and Conference.

The First Church of God, Charleston, held a state meeting in audio-visual religious education Oct. 4. Dr. Byron Turner participated in a panel discussion on the use of audio-visuals in Christian education and led an interest group for adults.

Yearbook Staff, ADE Make Plans, Seek Subscribers

Three weeks and two days remain in the subscription drive for a 1959 yearbook at Glenville State. If 300 subscriptions are not received by that time, Nov. 7, this campus will repeat the history of 1957 and will once again be without a yearbook.

Jacqueline Millard has been appointed by the Student Council to edit the '59 yearbook announces Stanley Hall, acting adviser to the staff. Miss Millard has asked Kitty Miller to serve as co-editor. Other officers are Charmaine Gunnoe, treasurer, Patty Mace, advertising manager, Bob Gandee, sports editor, and Phil Cottrill, photographer.

Conrad Heads Drive

Alpha Delta Epsilon business fraternity is in charge of the subscription drive. Manager of this campaign is Shirley Conrad. A minimum of 300 subscriptions must be received before any actual work can be started. Editor Millard comments that it is up to the student body whether or not GSC has a yearbook for 1959.

Any ADE member can take subscriptions; also arrangements to sell subscriptions in the dining hall during the evening meal have been made. Cost of a yearbook is \$4.00.

Consider New Name

Many changes have been proposed for this year's annual. According to Miss Millard, there may be a student vote to select a new name. KANAWHACHEN, the standard name for the yearbook, was chosen in 1911 by the first staff.

The Little Kanawha River was (Continued on Page 2)

GSC Chorus Plans First Appearance

The 32-voice GSC chorus under the direction of John D. Robinson, assistant professor of music, will make its first appearance of the fall season in a musical extravaganza planned for Nov. 31. During the Christmas season the chorus will give the annual presentation of Handel's "Messiah."

Plans are underway to have a select choir for the purpose of special music at various campus activities. Membership in these organizations is open; anyone who likes to sing may join by seeing Mr. Robinson in the music department.

Choir Members Listed

In the chorus are Janet Hall, Carol Sue Reed, Joyce Ann Rule, Erseline Gainer, Roma Starcher, Elaine Allison, Stanley Burns, Robert Row, Paul Wigal, Charles Massey, Francis Angelos, Edward McKown, Harry Black, Joan Lee McCoy, Mary Hull and Shirley Hager.

Joyce Brannon, Glenn Batten, Gennis Hundley, Margaret Rossi, Arminia Tucker, Carmen Amos, Mary Taylor, Shirley Conrad, Mary Sue Davidson, Martha Reese, Peggy Stover, Carolyn Wince, Mary Jane Clevenger, Mary Batten, Doris Conkle, and Robert Nicholas.



Leading the GSC Band again this year is Rodney Busch, senior from Elizabeth. Also, center, back row, is Carolyn Dotson, head majorette and choreographer for the majorette troupe. Miss Dotson is a sophomore from Pennsboro. On each end of the back row are the twirlers, Susan Brown and Mary Rollyson. Both are sophomores; Miss Brown is from Richmond, Miss Rollyson from Bridgeport. Majorettes, front row left to right are Sue Criss, senior, Clarksburg; Nancie Boles, freshman, Parkersburg; Brenda Ball, sophomore, Pennsboro; Joan Furr, and Lois Moore, both sophomores from Glenville. (MERCURY photo by Cottrill)

MERCURY Speaks for You

JUST A WORD WITH YOU—a student of Glenville State College. A box with the single word MERCURY has been placed in the Student Union.

IN THE PAST we have heard various gripes, complaints, and occasionally, a few words of praise about campus life and/or the way things are done. This criticism has many times included the MERCURY. Now is your chance to do something about your pet peeves. This paper is a student publication, to be used as a mouth-piece of students.

LET US KNOW your opinions, suggestions, criticisms, and comments on any phase of campus life. These remarks will be treated as strictly confidential. Any letter you wish published, however, must be signed; if requested, the MERCURY staff will withhold your name.

WE URGE YOU TO USE the MERCURY; this paper, as well as this campus, can be only as good as you, the GSC student, make it

—By Dorothy Butler

Postage Stamp People

CONSIDER the lowly postage stamp.

ALTHOUGH NOT QUITE so lowly as before the recent postal rate increase, this insignificant-appearing scrap of paper portrays a philosophy worthy of our note.

FIRST, someone sticks the stamp on a letter, then drops the letter in a mailbox. Now what happens?

THE STAMP STARTS somewhere. The task is assigned; there is no time to waste. So it says, "Let's get going!" and starts the journey.

THE LITTLE STAMP KEEPS going-because it sticks to the job. Letters without stamps cease going. Bicycles and boys fall the moment they stop. The postage stamp can not be neutral; it either is or is not on a letter; it's either backward or forward. No fence-straddling here.

IT CARRIES the letter with it. Not only did the stamp proceed on its journey, but took a message along with it. It did not strike out on its own, leaving the letter to flounder in its own helplessness. Neither did the stamp keep just part of its responsibilities abreast with its own progress; no, the whole message was carried along.

FINALLY, it delivered the goods. That was the stamp's goal—to carry its message to a definite place. Had it failed there would have been disappointment, maybe misunderstanding, hardships might have been suffered. But the stamp stuck and sticking means to go where you are going and get there!

CONSIDER the postage stamp. It starts, it keeps going, it takes its load along, it gets there.

FRESHMAN, you are just starting; consider the stamp. Take advantage of the facilities and opportunities offered you here. Sophomore, keep on going. Junior, don't become one-sided or careless. Senior, you seem to be almost there.

We need more people with postage-stamp qualities.

—By Dorothy Butler

Song, Dance, Pantomimes Features In Freshman 'Talent' Assembly Oct. 9

Katy Stewart served as Master of Ceremonies for the freshman assembly presented Oct. 9. This program followed tradition in displaying the talents of the freshman class.

Pete Spencer, Blaine Turner, Paul Fischer, and Ronnie Cham-

bers pantomimed to the song "Lollipop." A song "Play a Simple melody" was sung by Glen Batten, Glen Proctor, Bill Shinn, and John Ranson.

Two skits were presented. One featured Winona Stewart, Pat Sams, and Joyce Waybright; the other was a stunt skit, "Down on the Farm," with Marretta Russell, Luvonne Litton, Nancy Strickland, and Nancy Haddock.

"Sentimental Journey" was sung by Gwendolyn Blackhurst and Janet Hall. Joan McCoy and Fred Smith sang and pantomimed to "Dance With Me, Henry."

Duane Pursley played the uke and sang "The Wreck of 97." Singing and playing a guitar were Jim Buck, Sue Wright, and Patsy Stansberry. Kathryn Morgan danced the "Charleston."

The program ended with two pantomimes, one featuring David Wayland, Byron Baker, and Jim Booth; the other with Joyce Ann Rule, Bob Shreves, and Larry Gandle.

Dr. Edwin P. Adkins Coordinates Course For NBC Television

On Oct. 6, the National Broadcasting Company began a televised coast to coast college course in atomic physics. The new experiment is to be financed by the Ford Foundation and related funds for the advancement of education and big industry.

The new physics course is on the air five mornings a week for half an hour. Dr. Harvey E. White, vice chairman of the physics department at the University of California

(Continued on Page 4)

Sororities Choose Officers, Advisers

Kappa Chi Kappa Sorority held an election, Sept. 15, to fill the vacant offices left by girls not returning to school.

Mary Kemper Hull, junior from Glenville, will replace Miriam Butcher Dyer as recording secretary. Sue Click, senior from Evans, replaces Isabell Brady Fields as corresponding secretary.

Wanda Reed, junior from Glenville, replaces Sybil May as chaplain, and Jill Dorsey, sergeant-at-arms, is replaced by Thelda Strader, senior from Reedsville.

New sponsors for KKK are Miss Roberta Williams and Mrs. Leland Byrd.

Miss Veith Is President

Xi Beta Tau Sorority officers for the coming year are Phyllis Veith, president, junior, Burnsville; Arminia Tucker, vice president, junior, West Union; Mary Jo Chisler, recording secretary, junior, Lost Creek; Ruth Creasy, corresponding secretary, junior, Richwood.

Gail Ratliff, junior, Rupert, is treasurer; Nancy G. Barker, senior, Greenbank is historian; Jane Riddle, junior, Burnsville is herald; sentinel is Carmen Amos, Parkersburg; Barbara Zinn, senior, Pennsboro is chaplain.

Sponsors for Xi Beta Tau are Mrs. John White and Mrs. Clarence Maze.

GSC Will Be Host For State Society

For the first time in history Glenville State College will play host to the W. Va. Philosophical Society when the Society holds its fall meeting on campus this weekend.

According to Dr. James G. Jones who is in charge of arrangements, 13 reservations have been received. About 75 persons are expected to attend the two-day meeting.

Registration will begin at 11:00 a.m. Friday; faculty program and business session will follow in the afternoon at Louis Bennett Lounge. Dean Delmer K. Somerville will welcome the society members to campus at that time.

Banquet Planned

A banquet is planned for Friday at 7:00 p.m. in the Colonial Room. One of the features of the banquet program will be a talk by Dr. Harry B. Heflin, GSC president. Banquet plates will be \$1.69. Faculty members and students of GSC are welcome to attend any and all sessions. They are especially welcome to the banquet session.

Saturday's program will feature student reports and papers. The purpose of the society is to advance creative work in all areas of the field of philosophy. Research work is done by members of the society and the results are discussed at the regular meetings of the group.

Kottman, Long Visit GSC Agriculture Dept.

Dr. Roy Kottman, dean of Agriculture, West Virginia University, and J. Everett Long, W. Va. registrar, were on campus Oct. 3 evaluating Glenville College's two year agriculture program which they approved for acceptance toward a Bachelor of Science degree at the University.

— KAMPUS KARTOON —



Jones, you don't have the intestinal fortitude for this game!

College Students Assume Positions In Glenville Church Organizations

Wesley Foundation, student organization related to the Methodist Church is now sponsoring a series of Sunday evening programs on the theme "Boy-Girl Relationships."

The program begin each Sunday evening at 7:00 in the Trinity Methodist Church.

Individual themes are "Data for Dating," "How Do I know It's Love?" "Going Steady," "Now You Are Engaged," and "What Is a Christian Home?"

Wesley Foundation officers are Carolyn McCullough, president; Carolyn Ranson, secretary-treasurer; and Mary Kemper Hull, chairman of World Fellowship.

Negro Choir Coming

Wings Over Jordan Negro Choir will be singing at the Baptist Church, Monday, Oct. 27. Their specialty is Negro spirituals. General public is invited to attend.

Mary Sue Davidson is president of the College Student Fellowship, sponsored by the Baptist Church. Other officers are Beverly Rogers, vice president; Lois Moore, secretary; and Wynonna Mason, treasurer. This organization meets each Sunday at 6:45 p.m.

Will Select Officers

Westminster Fellowship, sponsored by the Presbyterian Church, meets each Sunday evening at 6:30. Officers will soon be elected and plans are underway for a project.

To most people nothing is more troublesome than the effort of thinking.

Yearbook Staff

(Continued from Page 1)

then the most important avenue of communication with the outside and "chen" means "little." A new name might be chosen which would have more connection to campus life. Other discussed changes include more pictures and more complete coverage of campus social life.

Rates for Ads Given

One page of the yearbook would be a Booster's page, listing the name of anyone who would contribute \$100 or more to the funds. Advertising rates for the yearbook are five, ten, twenty, and forty dollars. A forty dollar ad includes the whole page; one-half a page costs twenty dollars; ten dollars purchase one-fourth a page; five dollars, one-eighth.

Other persons who have volunteered to help with the yearbook this year are Nancy Wilfong, Martha McNeil, Susan Brown, Joan Comstock, Lois Moore, Karen Carr, Janet Hall, Dorothy Butler, Sue Vanentine, Arminia Tucker, George Manlove, and Barbara Penster.

This learned I from the shadow of a tree,
Than to and fro did sway against a wall,
Our shadow selves, our influence, may fall.

Where we ourselves can never be.

—Anna E. Hamilton

The Glenville Mercury

Student Weekly Newspaper of Glenville State College
Glenville, West Virginia

Entered as second class matter November 23, 1929, at the post office at Glenville, W. Va., under the act of March 3, 1879. Published each Wednesday during the academic year except on holidays by the classes in journalism at Glenville State College.

Subscriptions, \$2.00 per year — Telephone 6301

STAFF

Editor	Dorothy Butler
Photographer	Phil Cottrill
Business Manager	Gene Rowe
Sports Editor	Edwin Ware
Circulation Managers	Patty Mace, Joyce Newell
Cartoonist	Tim Weaver
Reporters	Garnet Boblett, Genevieve Butcher, Joan Comstock, Sue Criss, Ann Desant, Masil Dobson, Patty Mace, Charles Massey, Cora Perrine, Arminia Tucker, Nancy Wilfong, Virginia West
Adviser	

Glenville Tames Mountain Lions

Glenville State College remained undefeated in WVIAC football competition as they emerged victorious over host Concord State, 7-6 at Athens on Oct. 4.

Previous to the Concord game, the Pioneers clobbered West Liberty 13-0 and fought to a scoreless tie against the visiting Potomac State Catamounts.

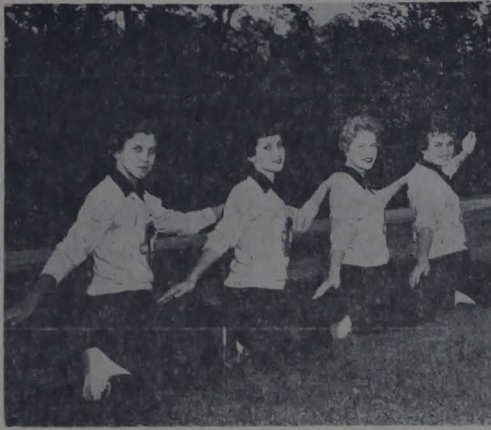
The Pioneers picked up 131 rushing yards against the Mountain Lions and 10 yards on one completed pass. Quarterback Jack Campbell tossed to End Steve McMillion for the pass. Overall, Campbell attempted three passes, completing one.

On the ground, fullback Bob Crews carried 15 times for total rushing of 61 yards. Halfback Larry "Doc" Stanley, injured early in the season and on the bench for the most of the first two games, carried nine times for 43 yards. Halfback Junior Wilson and Paul McKown covered the remaining 37 yards.

Steve McMillion starred as he booted six punts for total yardage of 247 and an average of 41 yards per punt. Paul McKown was credited with one punt for 45 yards.

The Murinmen tallied their single touchdown in the second quarter as Quarterback Campbell sneaked over after Larry Stanley's carry to the one. Gene Alkire converted the extra point which proved to be the margin of victory.

Concord scored in the third period after a number of short gains but all hopes of victory were gone as the conversion try failed. Phillips tallied for the Mountain Lions.



CHEERING THE PIONEERS on to victory this year will be the four spirited girls pictured above. Left to right they are Mary Jo Chisler, in her second year as GSC cheerleader; Mildred Nocida, a third-year cheerleader; Kathryn Morgan, freshman; and Alicia Lu Royster, also a freshman and head cheerleader of the quartet. (MERCURY photo by Cottrill)

Lu Royster Is Head Cheerleader; Morgan, Nocida, Chisler Also Win

Glenville State College Cheerleaders were chosen recently in a student-body election.

Selected were Lu Royster, Katy Morgan, Mildred Nocida, and Mary Jo Chisler.

Head cheerleader Lu Royster, daughter of Mr. and Mrs. Raleigh Royster of Troy, is a freshman business education student.

Persons desiring to participate in the concert band appearances this fall should contact Mr. Wallace in the music department. Applications for membership will be considered until Nov. 3.

Katy Morgan, daughter of Mr. and Mrs. V. J. Morgan of Switzer, is a freshman elementary education student.

Mildred Nocida, daughter of Mr. and Mrs. Carmelo Nocida of Glenville, is junior majoring in education. Miss Nocida is a member of Kappa Chi Kappa and has served as cheerleader the past two years.

Mary Jo Chisler, daughter of Mr. and Mrs. H. K. Chisler of Lost Creek, is a junior elementary education student. Miss Chisler is a member of Xi Beta Tau and will be serving her second year as cheerleader.

Strader, Campbell, Isch, Mace Chosen Team Captains

Sue Johnson, WAA sports leader, has announced the following volleyball teams have been organized for this semester: Kanawha Hall, Thelda Strader, captain; Sue Click, Carolee Singleton, Iolene Harding, Hester Reed, Joyce Rule, Virginia Davis, and Joan McCoy.

Verona Mapel Hall, Dorothea Isch captain; Glenda Coffman, Barbara Peaster, Sandy Stevens, Jane Spray, Doris Page, Katy Stewart, Beverly Starcher, and Norma Currey.

WAA Team I, Patty Mace, captain; Margaret Rossi, Sue Johnson, Delma Cottrill, Emily Strachman, Dorothy Butler, and Dottie Hart.

WAA Team II, Sue Campbell, captain; Berna Shawver, Patty Horner, Mary Jane Cleavenger, Barbara Moore, and Frances Patterson.

Modern Dry Cleaners
7 N. Court Street
Phone 4891
Patrick Reale

G & D
The meeting place of all ages. Quality service at its best. Remember - Everything for every occasion.

GEE-MEN IN ACTION THURSDAY

Pioneers Will Face W. Va. Wesleyan In Weston Contest Tomorrow Night

By EDWIN WARE

Coach Nicholas Murin's undefeated Glenville State College football team faces the oft defeated West Virginia Wesleyan Bobcats on the Weston High School Athletic field at 8 p.m., tomorrow, October 16, as the Pioneers try for their third win against one tie.

Glenville played Davis-Elkins and Wesleyan faced Salem in last Saturday's competition but results were not available when the MERCURY went to press.

Weston's Little League Baseball Association is sponsoring the Glenville-Wesleyan contest to finance the Little League program. The game was originally scheduled for Oct. 18, but was changed because of a conflict with other activities.

Jack Campbell, 185 pound quarterback, is certain to direct the Gee-Men. Campbell will be aided in the backfield by Paul McKown, Junior Wilson, and Larry Stanley at the halfback slots. Bob Crews and Ronnie Peters will carry the ball from the fullback spot.

Glenville's stellar line will be manned by a number of football giants. Center will be held by Blaine Turner. Steve McMillion, leading WVIAC punter will be at right end while Bill Adams handles left end.

At the guard position, Ron Stonfer, Glen Martin, Steve Taylor, Paul Fischer and Bill Shinn will share the duties. Tackle will be ably manned by Mike Borro, Rod Oldham, John Pisapia and Pete Spencer.

Following the Wesleyan encounter, the Pioneers have two games remaining. Glenville travels to West Union Saturday night, Oct. 25 to meet the Salem Tigers. Fairmont comes to Glenville Nov. 1 for the Pioneers final game.

Notice To Students

Athletic Director Carlos Ratliff announces that Activity cards may be used for admittance to the Wesleyan game. A student gate will be marked and activity books should be presented there.

Glenville did not play the Bobcats in the 1957 season. However, the Wesleyan series dates to 1901 and includes 23 games Wesleyan has been the overwhelming victor in the series with 16 wins while Glenville has registered only five victories. Two ties have been recorded. Glenville has not defeated the Cats since 1954.

In 1956, the last meeting of the two schools, Wesleyan dumped the Pioneers 7-6 on the same Weston gridiron.

Coach Murin declined to name a starting line-up for the encounter. However, Murin indicated that he will employ the modified platoon system which he has used throughout the season.

Mariana's BEAUTY SHOP

10 N. Court Street
Phone 6027

Hamric's Watch Repair

All repairing guaranteed

Fountain Service

Magazines
Cosmetics
School Supplies
Toilet Articles

THE GRILL

Dial Glenville 2891

CALHOUN SUPER SERVICE Everything for the home

LATEST HIT RECORDS
SPECIAL ORDERS FILLED
Phone 2601
102-04 South Lewis Street

NEW !! CONRAD RESTAURANT

Meet your friends at the Conrad

Colleen's BEAUTY SHOPPE

Lewis Street
Phone 4961

Glenville Midland One-Stop Shopping

Daniell CHEVROLET, INC.

Glenville Phone 6221
Chevrolet and Olds Sales and Service

Look just like DAD'S!



NEW Proud-Fit®
Chore Boy
by Weinbrenner

Let your boy be the first of the gang to have a pair of these rugged high-toppers, for work or play. Bring him in for a correct fitting, today.

Dalton's Store
Glenville

Howes' Dept. Store

A complete line of clothing and shoes for the college girl and boy.

For good flat-tops visit
Gene's Barber Shop
Gerald Moore, Gene Ellyson Barbers

RECORDS
Record House Dealer in this area at
Parson's Jewelry

R. B. Store

Every thing for your
HALLOWEEN PARTIES

Compliments
Porter's Motel
Phone 4781

Ben Franklin Store

Headquarters for Halloween

Best of luck, Pioneers !!

KANAWHA UNION BANK

GLENVILLE, W. VA.

Over Fifty Years of Service to Gilmer County
Member Federal Deposit Insurance Corporation

GSC Stage Group Launches Season With Behrman's Hit 'Second Man'

By NANCY WILFONG

Last night the curtain rang down on the final performance of S. N. Behrman's long time hit, "The Second Man." This was the first play of the season on the Glenville College stage. The play was seemingly enjoyed and appreciated by the audiences.

Herbert Proffitt, returning after a year at Marshall College where he appeared on the state, seemed much at home in his role of an honest but indolent short story writer who literally had to fight off the attentions of a beautiful young girl. Proffitt accepted his lot with a smile when he had to choose between youth and money.

Beverly McComis, acting the part of the "old friend" with the money, added a touch of sophistication and humor to the play. Teamed with the hero, Proffitt, a fashionable couple emerged.

The play must be accepted as a comedy of manners for no one can leave the heart out of a true life situation. Rodney Busch, a sentimental young man in love, again seemed to have a role cut to form as in so many other plays. His sincerity in character was most convincing.

Phyllis Harvey, appearing for the first time in a major college production, was a typical flapper pursuing, instead of waiting to be pur-

sued. She knew what she wanted and apparently would have gone to any ends to attain her goal.

Much of the success of the play may be attributed to the directing of Professor William S. E. Coleman. The modern designed furniture added a touch of color to the play. Casting, directing and setting of "The Second Man" started the play season of Glenville College off on the right foot.

Catholic Chapel Is Opened Here

The Rev. Father Bernard Quinn of Spencer parish, who has opened a Catholic chapel at Glenville, was a recent visitor on Glenville State campus.

Father Quinn will hold Mass each Sunday at 6 p.m. in the basement quarters of the J. H. Hall home at 202 U. Court St., chapel site. He will be in Glenville each Sunday afternoon, conduct the services at 6 p.m., and will remain here to spend Monday with members and friends of the chapel congregation.

A native of Kansas City, Mo., Father Quinn attended college there and seminaries in St. Louis and Cincinnati. He has served as a priest for five years; he came to Spencer last December.

Scholarship Students

(Continued from Page 1)

Sheila Anne Stalnaker; Elizabeth Lions Club, Harold Lockhart, Beverly Rogers; Glenville Civic Club, Maureen McFerrin; Glenville High School Student Council, Jean Huff; Glenville Woman's Club, Peggy Brown; Good Will Club of Rubber Fabricators of Grantsville, Joseph L. Francis, Sheila Wilmoth.

Legislative Grants

State of West Virginia Legislative Scholarships were granted by various legislators from their individual counties: Braxton, Clarice Ellen Lynch, Berna Marita Shawver; Calhoun, Carole Ann Kelley; Doddridge, Claris Raynelle Hickman; Fayette, Gennis Hundley.

Gilmer, Linda Sue Beal, June Bloomingdale; Harrison, J. W. Jay, Carol Sue Reed, Harry C. Hull; Kanawha, Charmaine Gunnoe, Cora Marie Perrine; Nicholas, Nancy Strickland; Pleasants, Marilou Locke; Pocahontas, Phyllis M. Carpenter; Ritchie, Nancy Spears; Roane, Shirley Conrad; Webster, Eldon K. Hamrick.

Dr. Edwin P. Adkins

(Continued from Page 2)

nia is conducting the caisses. This program is designed primarily for high school teachers, but college seniors and graduates are eligible.

Dr. Edwin P. Adkins who is the director of education of the New York University is the national coordinator. Dr. Adkins served as Dean of Glenville State College from 1949 to 1953.

Tim Weaver Joins MERCURY Staff; Is Creator of 'Kartoon' Feature

Actors Will Open

(Continued from Page 1)

kind in return for which the actors would provide entertainment.

In this way Porterfield brought together the hungry actor and the farmer with a surplus of produce. The first season the Theatre wound up with \$4.30 in cash and quantities of jams and jellies.

From these humble beginnings the group opened new horizons in show business. Today the Barter Theatre of Virginia is the largest professional company outside New York City.

The group was recognized by the Commonwealth of Virginia, the Virginia Conservation Commission, on April 3, 1946. In 1949 they presented "Hamlet" at Kronborg Castle, Elsinore, Denmark the first American production ever presented in the historic castle immortalized by Shakespeare.

The Barter Theatre provides invaluable training for young actors and has served as a launching point for many now famous stars. Rare is the Broadway, Hollywood, radio or television production that does not include a former member of the Barter Theatre.

MERCURY staff for 1958-59 has been announced by Miss Virginia West, adviser. Miss Dorothy Butler will serve as editor. Miss Butler, news editor for the MERCURY last year, is a junior from Orton and an English major.

Other staff members are photographer, Phil Cottrill, sophomore, chemistry major, Parkersburg; business manager, Gene Rowe, junior, biological science, Sissonville; sports editor, Edwin Ware, mathematics, Cox's Mills; circulation managers, Patty Mace, sophomore, elementary education, Weston and Joyce Newell, sophomore, mathematics, Nicut.

Reporters are Garnet Boblett, Genevieve Butcher, Joan Comstock, Sue Criss, Ann Dessent, Masil Dobson, Patty Mace, Charles Massey, Cora Perrine, Armita Tucker, Nancy Wilfong.

William Timothy Weaver, freshman, Rowelsburg, will join the staff as cartoonist. Weaver's first cartoon appears in this issue of the MERCURY.

Parson's Jewelry

Watches, Diamonds
Jewelry

THEY SAID IT COULDN'T BE DONE - BUT TODAY'S L&M GIVES YOU-



They said it couldn't be done...until the Wright Brothers flew this plane for 59 seconds in 1909. Today flying is so much a part of modern life—that 40 American colleges offer regular flying courses, many of them for degree credit.

Puff
by
puff

Less tars
&
More taste

DON'T SETTLE FOR ONE WITHOUT THE OTHER!

Change to L&M and get 'em both. Such an improved filter and more taste! Better taste than in any other cigarette. Yes, today's L&M combines these two essentials of modern smoking enjoyment—less tars and more taste—in one great cigarette.



Light into that Live Modern flavor!