

The Glenville Mercury

Vol XXXII No. 2

Glenville State College, Glenville, W. Va.

Wednesday, October 19, 1960

Student Council Name Committees For College Year

Mike Morrison, Student Council president, recently announced the appointment of various college committees to serve during the current year:

ASSEMBLY: Dr. James G. Jones, Mr. Alexander W. Zerban, advisers; Harold Metz, Dorcelene Cott-rill, and Sue Campbell, students.

LYCEUM: Mr. Carl A. Kerr, Dr. Robert Campbell, advisers; Judith Weese and Alvin Engelke, students.

ATHLETIC: Dr. Espy Miller, Mr. Carlos Ratliff, Mr. Leland Byrd, and Mr. Lloyd Jones, advisers; Steve Posey and Don Brookover, students.

SUPREME COURT: Dr. Harry B. Heflin and Mr. Stanley Hall, advisers; Mary Ann Graham and Bill Simmons, students.

AUDITING: Mrs. Dorothy Peterson, adviser; Loye Burner, Pat Jones, Roger Maze, and Freda Hatfield, students.

WHO'S WHO: Mr. Stanley Hall and Miss Virginia West, advisers; Clair Morehead, Roger Stonfer, and (Continued on Page 4)

Seven Scheduled For AB Degrees

Seven Glenville State College students are scheduled to complete requirements for an A.B. degree in education on Nov. 4, announces Dean Delmar K. Somerville.

These students include Mary Margaret Davis, Weston, biology and physical science; Mary Hefner Graves, Glenville, elementary education; Robert Lee Harvey, Haywood, speech and social studies.

James Drexel Marteney, Jane Lew, biology and social studies; Norma Joyce Newell, Niout, mathematics and English; Paul Takach, Parkersburg, art; Edwin Lyle Ware, Cox's Mill, mathematics and physical science.

All of these students except Mrs. Graves and Paul Takach are now completing student teaching requirements. Nine students completed AB degree requirements at the end of the first term last year.

Year Book Editor Named

Shirley Conrad, senior from Walton, has been named editor of the 1960-61 KANAWHACHEN according to Mike Morrison, Student Council President. Miss Conrad, a business education student, is vice-president of Alpha Delta Epsilon, business fraternity, and secretary of the choir. Assisting Miss Conrad with the work on the KANAWHACHEN will be Linda Beal, co-editor. Miss Beal is a senior elementary education student from Glenville.

Other members of the staff are Roger Hanna, business manager; William Biggers, sports editor; Harold Metz, assistant sports editor; Janet Fields, feature editor; Harold

Ruthless Rise to Top Portrayed



PICTURED ABOVE ARE 8 OF THE 19 MEMBERS OF THE "Golden Boy" cast. Left to right are Linda Lambiotte, James Booth, James Troy, Robert Gainer, Phyllis Harvey, John Chipps, Edward McKown and William Dawson. "Golden Boy" will be presented on the GSC stage Oct. 25 and 27. (MERCURY photo by Dixon.)

Pro Boxer Comes To GSC; Booth Plays Golden Boy

The world of professional boxing is not always pretty.

The promoters, the gangsters, the "has-beens," the trainers, the "hangers-ons," and the fighters — all the denizens of the dog-eat-dog jungle of pro boxing are on display in Clifford Odet's Broadway hit, "Golden Boy."

The play, the story of a young middle-weight's meteoric and ruthless rise to the top of the heap, is one of the most exciting and powerful plays in the American theatre. It presents a harsh, bitter picture of the scheming managers and their "under the table dealings" with the underworld that dominates American boxing.

But "Golden Boy" is also a human drama. It is the story of Golden Boy, Joe Bonaparte, (James Booth), a shy introvert, torn from his quiet cultured family life and tossed into a world of greed and coniving. It is the story of hardbitten Lorna Moon (Phyllis Harvey), and her choice between Golden Boy and his honest manager, Tom Moody (Bob Gainer). There is the shady promoter, Roxy (John Chipps), the gangster Fuselli (Ed McKown), and the loyal trainer, Tokio (Jim Troy).

Providing comedy relief will be Joe's brother-in-law, Siggie (Bill Dawson), Siggie's wife, Anna (Linda Lambiotte), and a punchy boxer, (Continued on Page 2)

Library Employs 11 This Semester

Eleven students are employed in the library this semester announces Charles D. Patterson, assistant professor of library science.

Cathryn Godfrey is serving as library assistant, and Shirley Orndorff is serving as secretary to the head librarian, Mr. Patterson. Wanda Stump is serving as administrative assistant.

Various other assistants who work in the library are: Sue Ellen Garrett, Joyce Waybright, Mary Vaughan, Nancy Strickland, Roger Stonfer, Robert Rodgers, Ed Grose, and Wyonna Mason. Student assistants are carefully chosen on the basis of scholastic ability, previous experience and personal qualifications. (Continued on Page 4)

MENC Meeting Set For Campus Monday, Oct. 24

State College Music Educators fall meeting will be held on the GSC campus, Oct. 24, lasting the entire day.

Students members of Chapter No. 284 of the Music Educators National Conference and the GSC music department will be hosts for this meeting.

Meetings in the morning, to discuss mutual problems of music educators, and a concert by the Glencoe and Brass Choir will constitute the day's activities.

The music which will be sung by the Glencoe will be chiefly from the Renaissance and Baroque Period including "Now is the Month of Maying," by Thomas Morley; "In These Delightful Pleasant Groves," by Henry Purcell; "O Bone Jesu," by Palestrina; "When Jesus Wept," (Continued on Page 4)

Radio Astronomer Will Visit Campus Thursday, Oct. 27

Two more interesting assembly programs are on the agenda for October reports Mr. Alexander Zerban, chairman of the assembly committee.

On Oct. 29 the G-Club will be in charge of the assembly. The club will show a movie of the 1959 W. V. U. — Pitt football game.

Oct. 27, Mr. Franklin J. Callender will be assembly speaker. Mr. Callender is chairman of the National Radio Astronomy Observatory at Green Bank, and will show pictures and slides illustrating the use and development of the Ob- (Continued on Page 4)

Students Appear In Original Play On WJPB Sunday

On Sunday, Oct. 23 at 5:30 p.m., Glenville State College will be represented on WJPB-TV, Weston, by an original one-act play, "Courtship and Early Death," which was written and adapted for television by Associate Professor William S. E. Coleman.

The half-hour drama will feature Judith Miles, Eugene Davis, Mary Vaughan, Curt Legg, Delmar Brown, William Biggers, James Dotson, James Buck and Frank Holstein. James Troy will serve as announcer.

The play is a fantasy about the last hours of a young married couple prior to the outbreak of a future atomic war. "Courtship and Early Death" has been performed on the stage at Louisiana State University, Penn State, Altona and Slippery Rock, but never before on television.

This program is the first of at least four television programs that GSC will produce this year. The next program will be produced on Dec. 11, and will feature excerpts from the annual Christmas concert.

Iranian Students Enroll at Glenville

There are seven students from Teheran, Iran, attending Glenville State College. Five of this number are full-time students, one is a part-time student and the other one has not officially enrolled. These students are Kewmar Hakimbashi, Ghabad Robert Irany, David Sadrolshahrif, Saeed Nili, Kamran Khajeh-Noori, Zoonin Sarkhosh, and Mustapha Dowlalshi.

Out-of-state students attending Glenville include Marilyn Igou, District of Columbia; Mary Hefner Graves, Florida; Terry Louis Dutton, Carl Henry Memberger, Jane Logan Leverage, William Young, Maryland; William Haywood, Massachusetts; Eileen Kapalla, New Jersey; Charles Gardner Curtis, Norma Jean Hilerding, Jerry Walter Long, Robert Lee Reed, Barbara Lou Moore, William Wade Spelbring, Ohio; Joseph Gregori, James Malcolm Price, Oille Pottmeyer, Marlene Ann Jurasko, Roger James Stonfer, George Raymond Machak, Pennsylvania.

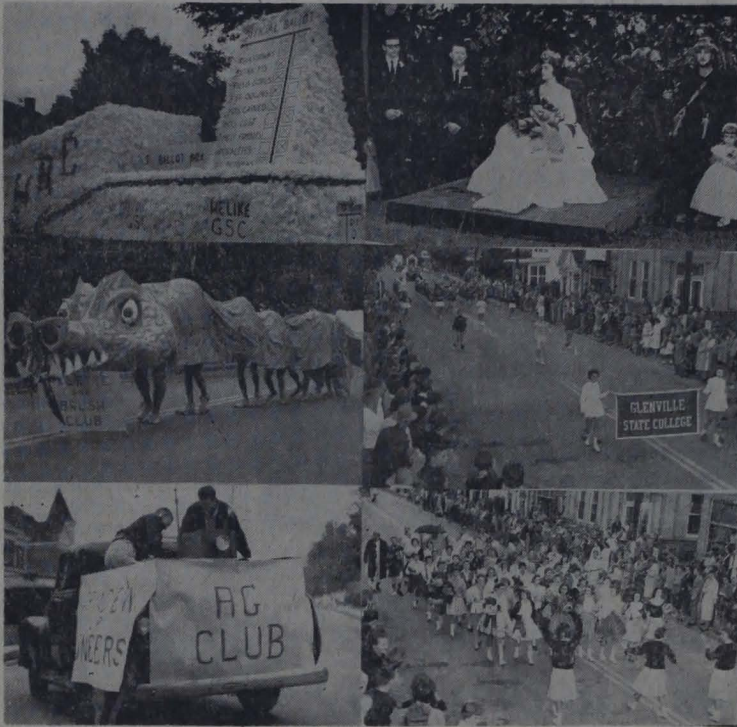
Gilmer County leads the enroll- (Continued on Page 4)

Melba L. Garrett Serves As Queen

GSC freshman Melba Lynne Garrett was crowned Queen of the Black Walnut Festival Friday, Oct. 14, by Governor Cecil H. Underwood. Coronation took place at the Spencer High School athletic field. (Continued on Page 2)



Shirley Conrad



WINNING FLOATS, CORONATION SCENE AND MAIN-STREET MARCHES in the 1960 Homecoming parade and activities are pictured above. Top left picture shows the Holy Roller Court float which won first honors in the judging. HRC tied with Xi Beta Tau for first-place honors in 1959. Second-place winner this year was the Palette and Brush Club dragon. The agriculture Club won third with its "Grind Em Up Pioneers." Pictured on the top right is Queen Mary Ann and members of her court at the coronation scene. Right, center picture shows the Glenville State College Band in parade formation on Main Street. Lower right scene shows a number of GSC freshmen, led by the cheerleaders, in a colorful and clowning addition to the parade.

(MERCURY pictures by Dixon and Moore)

Community Church News

PRESBYTERIAN: Sunday school, 10:00 a.m.; worship service, 11:00 a.m.; youth group, 6:30 p.m. The Presbyterian youth group, which meets informally each Sunday evening, is attended by several college students.

CATHOLIC: Mass, every Sunday at 4:00 p.m. in the basement of the home of Mrs. Belle Brinkley, 202 North Court Street. There is a new priest this year, Father McMann. His assistant is Father Don Kaple. There is no youth group at the present time, but Father McMann plans to organize one in the near future.

BAPTIST: Sunday school 9:45 a.m.; worship service, 10:00 a.m.; youth group, 6:45 p.m.; evening worship, 7:30 p.m. The Baptist Youth Fellowship is composed entirely of college students. The of-

ficers are Deronda Jones, president; Wyvonna Mason, vice president; Gerald Wilson, secretary; and Sondra Elmore, publicity chairman.

CHURCH OF CHRIST: Bible study, 9:45 a.m.; worship service, 10:30 a.m.; evening worship, 7:30 p.m.; youth group, Monday, 7:00 p.m.

METHODIST: Sunday school, 9:45 a.m.; worship service, 10:55 a.m.; Wesley Foundation, 6:45 p.m.; evening worship, 7:30 p.m. The Wesley Foundation Methodist Youth Fellowship is composed entirely of college students. Officers are Carol Reed, president; Clair Morehead, vice president; Pat Dennis, secretary; and Marie Jewell, treasurer.

The "Facts and/or Faith" discussions will continue through the month of October. These talks are given by different college professors, who discuss the relation of their various fields of study to religion. Mr. John Davis will speak on Oct. 23, and Dr. Byron Turner will speak on Oct. 30.

Melba Garrett

(Continued from Page 1)

Queen Melba VI, the daughter of Mr. and Mrs. Glenn Garrett of Sand Fork, is a graduate of Glenville High School.

AnKara Miller, daughter of Mr. and Mrs. George Miller of Vienna, was a princess.

Judy Thomas, daughter of Mr. and Mrs. Winfield S. Thomas of Grantsville was also a princess. Miss Thomas and Miss Miller are GSC freshmen.

Princesses were judged earlier on beauty of the face and figure, poise, dignity, and stage presence. The three divisions of judging were a parade, in which a sports outfit was worn; a dinner, to which evening gowns were worn; and a water carnival, where bathing suits were modeled. Miss Garrett was selected Queen following this judging.

Mrs. Judy Kay Marks, freshman, served as Queen of the Black Walnut Festival in 1958.

Pro Boxer

(Continued from Page 1)

Pepper White, (Ed White).

Mr. Bonaparte, Golden Boy's father (Harold Metz), is a sensitive, cultured man aware of his son's dilemma, and his close, intellectual friend Mr. Carp is portrayed by

NOTICE

Second payment of room and board in amount of \$133.11 will be due and payable on or before Tuesday, Nov. 1, 1960. A new meal card will be issued when payment is made.

Lloyd M. Jones
Business Manager

Graham, Ruckman Lead Sororities

Kappa Chi Kappa

Mary Ann Graham, senior art major from South Charleston, holds top office in the Kappa Chi Kappa Sorority. Martha Lee Hall is vice president. Other officers are Lorene Belle, recording secretary; Connie Coffindaffer, corresponding secretary; Sue Skidmore, treasurer; Pat Dennis, chaplain; Ann Rodney Lorentz, parliamentarian; and Norma Currey, pledge mistress. Mrs. Leland Byrd is the adviser.

Xi Beta Tau

Jane Ruckman was elected president of the Xi Beta Tau Sorority at a recent meeting. Miss Ruckman is a senior English and speech student from Hillsboro. Other officers are Winona Stewart, vice president; Betty Yoak, corresponding secretary; Janet Fields, recording secretary; Sondra Elmore, treasurer; Joyce Jackson, chaplain; Patty Mace, sentinel; Beverly Hockenberry, herald; Linda Mayo, parliamentarian; and Carolyn Dotson, historian. Mrs. L. B. Trussler and Mrs. Robert A. Campbell are the advisers.

Curt Legg.

Barker, a fight manager (Frank Holstein), Mickey, the trainer, (Tim Hayes), and the reporters Drake and Driscoll, (Virgil Smith), (William Biggers), all are important in this fast-moving drama of the world of boxing.

There will be four sets designed by Associate Professor William S. E. Coleman, and complicated lighting and intricate sounds are to be used in the play.

Admission price is 50c and curtain time is set for 8 p.m., Tuesday, Oct. 25, and Thursday, Oct. 27.

"Golden Boy" is being presented in arrangement with the Dramatists Play Service.

1960 Homecoming Is Well Attended; Spectators Line Street for Parade

The 27th annual observance of Homecoming at Glenville State College brought many alumni and friends of the College back to the Main Street of Glenville to view the colorful parade, to the campus for the crowning of Queen Mary Ann, and to Rohrbough Field for the football clash between the powerful Pioneers and the Davis-Elkins Senators.

and saluted Queen Mary Ann at half time of the game.

Queen Mary Ann Graham, senior from South Charleston, was crowned by Dr. Harry B. Heflin in coronation ceremonies on the college campus. Bill Simmons of Cox's Mill served as Pioneer and Little Lisa Jones, daughter of Dr. and (Continued on Page 4)

Masquerade Ball Set For Oct. 29

President June Sears, junior from Glenville, announces that the Music Educators National Conference is sponsoring the annual Masquerade Ball on Saturday, Oct. 29, in the Student Union.

Other officers of the organization are Clarence James, junior from Parkersburg, vice-president; Elaine Allison, junior from St. Marys, secretary; and George Kerr, junior, Clendenin, treasurer.

MISS EDWARDS SAYS 'ALOHA'

Assistant Registrar Returns to Desk After Enchanting Vacation In Hawaii

Being met at the Honolulu International Airport by a native Hawaiian girl who greeted each arriving visitor with "Aloha", with the traditional lei of orchids, a kiss on the cheek, and a big smile, puts one in a festive mood and she knows at that moment she is going to have a wonderful time on the island and the beach of Waikiki. So it was for Miss Erma Edwards, assistant registrar at GSC, when she visited Hawaii for one week this past summer.

A trip around the island of Oahu gave her a general idea of life on the islands. Flowers bloomed profusely and the scenery everywhere was beautiful. Almost everywhere one goes on this island, according to Miss Edwards, historic DIAMOND HEAD can be seen in the distance.

Miss Edwards and her friends passed through downtown Honolulu, saw the judiciary building with the statue of King Kamehameha the Great standing out front, the Mormon Temple, and the University of Hawaii. They visited the Punchbowl Crater — containing the National Memorial Cemetery of the Pacific where the well-known war writer Ernie Pyle is buried.

Miss Edwards tells us that they got a magnificent view of the island from Mt. Tantalus. They passed through papaya and banana groves and through pineapple and sugar plantations. She was surprised to learn that pineapple plants are set out by hand. One man sets out about 8,000 plants in an eight-hour day. There are many large and interesting trees on the island of Oahu.

The Royal Poinciana and the Rainbow Shower trees were spectacular, according to Miss Edwards, but two of the most interesting to her were the Banyan trees and

Monkey Pod trees from which various shaped bowls, spoons and other wood items are made. They visited one of the craft shops where these were made.

Miss Edwards says her trip through the DOLE Pineapple Cannery was worthwhile. Six thousand people are employed in this can-



nery, the largest fruit cannery in the world. During the peak season more than seven thousand are employed.

A tour on the vessel KAMMANU around Pearl Harbor, with a full description of that unforgettable day, Dec. 7, 1941, is one Miss Edwards will long remember. In Battleship Row she saw the sunken USS UTAH and the USS ARIZONA, which is marked by Old Glory at flag staff. The sunken remains of the USS ARIZONA rest in 45-feet of water where 1102 bodies of her gallant crew are still aboard.

Another trip out into the blue Pacific was an evening on a large sail boat. As the boat drifted along with the wind, they were enter-

(Continued on Page 4)

G-Men Down Davis-Elkins; Wilson Leads Scoring Plays

Glenville Sweeps Through First 4

The Glenville Pioneers have swept through their first four games of the season undefeated and are leading the Western division of the WVIAC. The G-men were the only unbeaten team in either division when the MERCURY went to press; however, W. VA. Tech is unbeaten in conference play with only a 14-14 tie to blemish its record. The Pioneers have a 4-0 slate and Tech is riding in second place with a 2-0-1 record.

Glenville has two tough games left as they try to rack up their second undefeated season and league championship in the last three years. The G-men played

(Continued on Page 4)

By Bob Oliver

The undefeated Glenville Pioneers routed Davis-Elkins 36-0 in the Pioneer's homecoming game, Oct. 8. Glenville scored two quick touchdowns in the first quarter and then broke the game wide open in the second half with 24 points. Outstanding for the G-Men was their defensive line that held the Senators to 15-yards net rushing.

Linda Mayo Leads Local WAA Group

Linda Mayo, senior physical education and social studies student from Williamstown, will serve as president of the Women's Athletic Association.

Other officers named in a recent club election were Sue Campbell, junior physical education and social studies student from Saint Albans, vice president; Lu Royster, junior physical education and social studies student of Troy, secretary-treasurer; Eileen Kapella,

(Continued On Page 4)

The Pioneers kicked off to open the game. The Senators failed to move the ball and elected to punt on fourth down. Junior Wilson took the punt on the Pioneer 28-yard line and returned the ball 72 yards behind beautiful blocking to send the G-men off winging. Later in the first stanza the Senators again attempted to punt but Bill Shinn, defensive guard, broke through to partially block the kick.

GSC Leads At Halftime

Paul Anderson caught the kick on the D-E 28-yard line and returned it to the 18. Three plays later quarterback Lou Nocida threw a jump pass to Bob Summers, good for 14 yards and a touchdown. Summers appeared stopped on the five-yard line but spun loose and romped in to score. Gene Alkire attempted both extra points and both failed. At halftime the score was 12-0, as neither team was able to score in the second quarter.

Glenville broke loose in the second half, took the kickoff and marched 82 yards to paydirt with Glen Proctor going the last 11 yards. This time Alkire's kick split the uprights and the margin was 19-0.

Drake Sets Up Play

Freshman defensive-back Ed Drake set up the next Pioneer score by intercepting a D-E pass on the Senators 46-yard line. On the next play Junior Wilson electrified the crowd with a dazzling run of 46 yards as he eluded Senator after Senator. Gene Alkire again booted the conversion and the G-men had a 26-0 lead.

In the last quarter Coach Murin emptied the bench but the Pioneers continued to pour it on as quarterback Ollie Pottmeyer threw a 26-yard scoring pass to freshman half-back Tommy Gunnoe. Alkire sent his third extra point sailing through the goal post to stretch the margin to 33-0.

The Big Blues were still not through as Gene, "The Toe", Alkire booted a 20-yard field goal with less than two minutes left in the game. This accounted for the final score, 36-0.

Nocida Excels in Passing

Junior Wilson had another good day as he rushed for 65 yards, caught a pass for 14 yards and scored twice. Glen Proctor, who replaced the injured Ellsworth Buck

(Continued on Page 4)



HALFBACK GLEN PROCTOR (No. 24) is tackled by the Senator's Donald Bender (No. 20) in the 36-0 rout of Davis-Elkins in the annual Homecoming football clash at Rohrbough Field, Oct. 8. During the afternoon Proctor carried the ball eight times, gained 36 yards and scored one touchdown. Other Pioneer men in this action are Bob Summers (No. 29) and Phil Clark (No. 42). D-E men trailing the play are Wiezorowski (No. 35) and DeMatteo (No.34).

(MERCURY action shot by Dixon)

Pioneer's Passing Proves Powerful In Closing Seconds Against Concord

By Bob Oliver

Ten seconds remained on the clock and the score was 13-12 for Concord when freshman quarterback Ollie Pottmeyer faded back to pass. Junior Wilson, who had flanked far to the left, raced down the field and cut in over the middle on the pass pattern known in the Pioneer system as the deep circle.

Pottmeyer spotted the flying Wilson and threw high and deep; Wilson took the ball over his shoulder on a beautiful catch, side-stepped one man and outran everyone in sight as he sped across the goal with the winning touchdown as the final gun went off. The Concord fans sat dazed in disbelief having already counted the game as won when the Mountain Lions scored with 29 seconds left to take the lead.

This heroic 79-yard pass play enabled the G-men to remain unbeaten and continue their advance to the head of the conference standings.

The Pioneers got off to a bad start as they fumbled the first play from scrimmage with Concord recovering on the Pioneer 27-yard line. The Lions quickly tallied their first touchdown with Joe Phillips scoring on a 12 yard run; Wayne Hick's extra point kick was good

and Concord led 7-0.

Again in the first quarter the Mountain Lions were threatening the G-men goal line with a TD that could have broken the game wide open; however, defensive back Glen Proctor rose to the occasion intercepting a Concord pass on his own goal line and returning it 74 yards before being caught from behind.

The White Wave finally broke the scoring ice in the second period when the hard-charging defensive line caused the Concord quarterback to fumble. Linebacker Paul Anderson scooped up the ball on the Lions 27 and dashed into the endzone for the TD. Dean Barker attempted the extra point which was wide to the left and the score was 7-6 at the half with Concord up.

In the third quarter Glenville took the lead for the first time as Junior Wilson capped a 75-yard drive with an eight-yard scoring jaunt. Gene Alkire attempted the conversion which was no good and left the score 12-7 Glenville.

With a little more than three minutes of play the Pioneers chose to go for a first down with a fourth and one-inch situation on their own 29-yard line. Paul Skidmore dived

(Continued on Page 4)

| Glenville State College 1960 Football Roster | | | | HOMETOWN | |
|---|------|--------|-------|------------------|--|
| NAME | POS. | WEIGHT | CLASS | | |
| Junior Wilson | HB | 185 | Sr | Clay | |
| Paul Skidmore | FB | 218 | Sr | East Raintelle | |
| James Dotson | T | 235 | Sr | Charleston | |
| James Jay | E | 190 | Sr. | Charlensburg | |
| Gene Alkire | HB | 140 | Sr | Parkersburg | |
| Mike Webb | T | 243 | Sr | St. Marys | |
| Bernie Williams | E | 175 | Sr | Artie | |
| Buddie Minner | E | 215 | Sr | Flat Top | |
| Dean Barker | QB | 182 | Sr | Spencer | |
| Ben Lopley | C | 190 | Sr | Raintelle | |
| Glen Martin | G | 195 | Sr | Clendenin | |
| John Chippie | T | 220 | Sr | St. Marys | |
| Elbert Spencer | T | 250 | Jr | Richwood | |
| Ellsworth Buck | HB | 180 | Jr | Richwood | |
| Phil Clark | FB | 215 | Jr | Moundsville | |
| William Shinn | G | 200 | Jr | Charleston | |
| Robert Summers | E | 170 | Jr | Big Chimney | |
| Everett Davis | C | 225 | So | Parkersburg | |
| Keith Smith | E | 195 | So | Jane Lew | |
| Vincent Post | T | 230 | So | Moundsville | |
| Louie Nocida | QB | 182 | So | Flower | |
| Edward White | G | 190 | So | Glenville | |
| Gale Hammett | C | 205 | So | Lelavay | |
| Charley Ellyson | HB | 148 | So | Pensboro | |
| John Napolitano | G | 205 | So | Coxs Mills | |
| Paul Anderson | G | 185 | So | Peekskill, N. Y. | |
| Kermit Moore | G | 192 | So | Clarksburg | |
| Harold Deering | HB | 169 | Fr | Lewisburg | |
| Tommy Gunnoe | HB | 150 | Fr | Glenville | |
| Ollie Pottmeyer | HB | 168 | Fr | Big Chimney | |
| David Daugherty | QB | 170 | Fr | Marmet | |
| Edward Drake | T | 192 | Fr | Verona, Pa. | |
| Robert Brown | HB | 165 | Fr | Weston | |
| Raymond Davidson | G | 155 | Fr. | Wilsie | |
| Frank McKown | HB | 148 | Fr | Camden on Gauley | |
| Pete Gould | E | 190 | Fr | Glenkint | |
| Bill Kinzer | FB | 185 | Fr | Lookout | |
| | E | 200 | Fr | Ravenswood | |
| | | | | West Milford | |

"MODERN BEAUTY SALON"
Edith Ellyson
Phone 6466

Corsages and Flowers
for all occasions at
Minnich Florist

Gobble! Gobble! Get your
Halloween needs at the
Ben Franklin

N. Court Street
Patrick Reale
Modern Dry Cleaners
Phone 4891

Best of Luck Pioneers!

KANAWHA UNION BANK
Glenville, W. Va.

Over fifty years of service to Gilmer County
Member of Federal Deposit Insurance Company

Colleen's Beauty Shoppe
Phone 4691
Lewis Street

Keepsake Diamonds, Elgin
and Bulova Watches, Speidel
Bands and Idents-Parker Pens
Watch and Jewelry Repair
Guaranteed
Hamric's Jewelry
Phone 3591

For quality service and delicious
foods visit us soon at the
Conrad Restaurant

All household Appliances available.
Visit us soon.

Calhoun Super Service

Winter and Fall Clothes Available for All At The Dalton Store

For the best in hairstyling visit
Gene's Barber Shop
Gene Ellyson and
Jimmie Fitzwater

Cosmetics, Jewelry, and
Fountain Service At the

The G & D Store
Your Every Day Needs

The Finest line in everyday
foods, parties, anniversaries,
and weddings at the.
R. B. Store

Miss Edwards Says
(Continued From Page 2)

tained with native music and a hula dancer while they ate their evening meal of fried chicken served in card-board boxes.

Miss Edwards attended a LUAU (the native Hawaiian feast) in the Hawaiian Village Hotel. "The roast pig and the poi are not tasty dishes," she says, "but the 'Call of the Conch Shell' during the lowering of the flag and the opening of the imu is quite impressive." There was a full evening of music, singing, and dancing in colorful native costumes and grass skirts made from TI leaves.

Miss Edwards describes the KODAK HULA SHOW as being very colorful and entertaining. It was held out in the open with a lovely view of the Pacific and a native grass hut in the background.

Being on a tour of the island on the Fourth of July, Miss Edwards had to miss the historic flag raising ceremony of our new 50th state.

She left the island with a feeling of friendliness toward the natives.

Prior to her week in Hawaii, she spent one week in Los Angeles. She attended some of the National Education Association meetings including the Hollywood Symphony Orchestra in the Hollywood Bowl, with Jimmy Green conducting. She found Disneyland just like the fairy tale it is supposed to be, colorful and interesting. Knotts Berry Farm was an interesting place with good food. She toured Hollywood, Santa Monica and Beverly Hills, where she saw many of the lovely homes of the movie stars, including the ranch house and polo grounds of the late Will Rogers.

Flying at 560-miles an hour at 31,000 feet on the American Jetliner, she could look down and see the colors in the painted desert and the rim of the Grand Canyon as she crossed the states enroute to L.A. The entire trip was made by plane (approximately 10,000 miles) and Miss Edwards says, "I thoroughly enjoyed every minute of it."

**For Haircut or shave
visit
Bantz's Barber Shop**

**GLENVILLE
MIDLAND
Phone 2561**

"Nan" Dorsey Sweaters for
the College Girls and
Puritan Sportswear for the
College man at the

**Howes'
Dept. Store**

**Parson's
Jewelry**
Glenville and Grantsville

All work guaranteed!
Gifts for all occasions

Watch and Jewelry Repairing
Bulova and Elgin Watches
Hallmark Cards

Pioneers Passing
(Continued From Page 3)

into the line but according to the officials he failed to make the necessary yardage and the Mountain Lions took over. Then it was all up to the Pioneer defense as Concord attempted to push across the winning tally. With 29 seconds on the clock Concord succeeded with Joe Phillips going the last 3 yards.

Extra point was no good but that mattered little to the jubilant Lions who smelled victory. After the kick-off the G-men ran one play and were penalized back to their own 21-yard line with ten seconds left. This set the stage for the Pottmeyer-to-Wilson winning pass.

Phil Clark topped the Pioneer rushers with 55 yards in ten tries. Ellsworth Buck had 52 in 13 rushes before hurting his ankle. Louie Nocida completed 3 of 7 passes for 41 yards and Pottmeyer had his one big completion in six attempts.

G-Men
(Continued from Page 3)

on the offensive team, also showed well in his halfback position. Proctor gained 36 yards rushing and scored one touchdown.

Quarterback Louie Nocida had his best passing day of the year as he hit on four in four attempts, good for 44 yards. End Bob Summers showed fine form as he caught three passes for 30 yards and a touchdown.

The real heroes were the immovable mountains that man the defensive unit, Bill Shinn, Jim Dotson, Mike Webb, Keith Smith, Jim Jay, John Chippis, Paul Skidmore, Ben Lepley, and Bud Minner all made their share of tackles as they held D-E to 15 yards in 21 attempts.

Library Employs
(Continued From Page 1)

Mr. Patterson calls attention to the publication of a Book List which appears bi-monthly and lists the new books received in the library as well as filmstrips and recordings. Book is available to all students and is placed on the circulation desk in the library for distribution.

The schedule for the library for the year is:
Monday thru Friday 8:00 to 5:00
Monday thru Thurs. 6:30 to 8:30
Saturday 8:30 to 12:00

**Reed's
Shoe Repair**
and
Leather Goods
Glenville, W. Va.

**Expert Work
Shoe Accessories
Dye Service**

Glenville's only pharmacy
Your necessities available at

**Summer's
Pharmacy**

Radio Astronomer
(Continued From Page 1)

servatory. The purpose of the observatory is to conduct further experiments concerning outer space and information on stars and other celestial bodies.

Mr. Callender will spend Thursday afternoon Oct. 27, Friday, Oct. 28, meeting with the science classes on campus and holding discussions.

Mr. Callender received his Baccalaureate in Political Science and Public Law in 1946 and has worked in scientific and research organizations, in an administrative capacity, for the past 13 years.

1960 Homecoming
(Continued From Page 2)

Mrs. James G. Jones, was crown bearer.

Half-time program included the presentation of the Montrose award to Charles Watt, 1960 graduate, now coaching at Clendenin Jr. High School and presentation of Mrs. Lois Mason Mace, first Homecoming Queen.

First Homecoming at GSC was held Oct. 14, 1931, but a Queen was not chosen until 1938. Homecoming was suspended during the war years, 1943-44-45.

Homecoming Queens include Lois Mason Mace, 1938; Jean McGee, 1939; Ruth Annabell Hull Murin, 1940; Madelyn Conrad, 1941; June Wilson, 1942; Katherine Hall, 1946; Ella Mae Scott, 1947; Jo Ann Foreman, 1948; Alfreda Taylor, 1949; Nadine Clark, 1950; Doris Perkins, 1951; Dorothy Terrill, 1952; Frances Elaine (Sally) Waggoner, 1953; Elaine Bell, 1954; Susan Arnold, 1955; Mary Lee Foster, 1956; Rose Marie Gwinn, 1957; Leona Hampton, 1958; Flora Ann Dyer, 1959; Mary Ann Graham, 1960.

Linda Mayo
(Continued From Page 3)

sophomore physical education and art from Roselle, N. J. point secretary.

Miss Clarissa Williams is WAA adviser.

MENC Meeting
(Continued From Page 1)

by William Billings; "O Vos Omnes," by Thomas Victoria; "All Creatures Now Are Merry Mind-ed," by John Bennet; "Fair in Face," by Healey Willan; and "When Allen-A-Dale Went A-Hunting," by Robert Pearsall.

The Brass Choir will play two pieces by Johann Schein, two pieces by William Brade, "Brass Quartet No. 1" by Maurice Whitney, and "Quintet in B Flat" by Robert Sanders.

Members of Glenchoes are Shirley Conrad, Martha Lee Hall, Elaine Allison, Patty Dent, Alexander Zerman, Paul Wigel, Edward McKown, and Bill Spelbring. Composing the Brass Choir are Clarence James and Dan Allman, trumpets; Kay Strosnider, french horn; John McLaughlin and Dr. Campbell, trombones; and Robert Row, tuba.

Directors of the Glenchoes and Brass Choir are Mr. Alexander Zerman, instructor in music and Dr. Robert Campbell, assistant professor of music.

Iranian Students
(Continued from Page 1)

ment with 150 students. Wood County is in second place with 77 students. Lewis County places third with 62 students and Braxton County follows with 50.

Other counties include Kanawha 46, Calhoun 42, Nicholas 32, Harrison 29, Ritchie 27, Roane 27, Pleasants 16, Webster 15, Wirt 13, Pocahontas 12, Fayette 12, and Jackson 10.

Clay 9, Doddridge 9, Greenbrier 3, Randolph 8, Upshur 8, Raleigh 6, Marshall 5, Barbour 4, Logan 4, Pendleton 4, Boone 2, Marion 2, Mason 2, Monroe 2, Putnam 2, Hancock 1, McDowell 1, Preston 1, Summers 1, Tyler 1, Wayne 1, Wetzel 1, and Wyoming 1.

There are 79 extension students: Nicholas 26, Clay 22, Wirt 22, Wood 5, Ritchie 2, Webster 1, and Braxton 1.

Glenville Sweeps
(Continued From Page 3)

host to the W.Va. Wesleyan Bobcats last Saturday. Wesleyan had a 1-1 conference record going into the game.

Glenville fans are hoping for the immediate return to the lineup of Ellsworth Buck. Buck sat out the 36-0 victory over D-E because of an ankle injury. With Buck out Junior Wilson took up the slack with two touchdowns and Buck's replacement, Glen Proctor scored with one touchdown and played good ball in his first assignment on the offensive unit. Proctor had played with the defensive unit the first three games.

Glenville will travel to West Union for a night game with Salem Saturday, Oct. 22, and will close out the season against Fairmont Oct. 29, at Glenville. Salem is currently in second place in the Eastern division with a 2-2 record and Fairmont is in third place in the Western Division with a 3-1 mark.

Student Council
(Continued From Page 1)

Janet Fields, students.

LIBRARY: Dr. Byron Turner, Mr. Charles D. Patterson, Mr. Carl Kerr, and Mr. Nelson Wells, advisers; Shirley Orndorff, Evelyn McHenry, Tim Weaver, Robert Rodgers, Judy Conaway, and Jim Wiant, students.

COUNTING: Miss Pearl Pickens, Miss Roberta Williams, advisers; George Broschart, Joe Mackey, Carol June Hawkins, and Bill Dixon, students.

DINING HALL: Mrs. Eileen Wolfe, Mrs. Flora Pribble, and Miss Blanche Hinkle, advisers; Bill Gonzalez, Pat Dennis, and Dale Doddrell, students.

RECORD: Charlie Friedman, Judy Yancey, Russ Shepherd, Joe Gregori, and Bill Maxwell, students.

MONTRÖSE AWARD: Mr. Carlos Ratliff and Mr. Stanley Hall, advisers; Steve Ferguson, Bob Oliver, and Lu Royster, students.

GLENVILLE SERVICE STATION

Phone 2881

Corner Lewis And Main In Glenville

"The Station With The Friendly Service"

We have a complete, one stop, service. Let us service your car while you shop. Your credit is ALWAYS good here!

If you ever catch us forgetting to clean your windshield you are entitled to a FREE GREASE and WASH job and TANK OF GASOLINE!

Satisfaction Guaranteed on Every Car Wash. We wash the INSIDE as well as the outside. Wash Guaranteed to pass YOUR inspection.

We make NO EXTRA CHARGE on pick-up and deliveries. If you stall just call. Our truck bumper has rubber on it so it won't damage your bumper. If your battery goes dead call us before you bury it. Save money on buying tires — — See us before you buy those new or recapped tires. We fix your flats.

Put your car in GOOD hands. Give us a try — — We want your business. We always give prompt, dependable service. Service is our business, so let us be of service.

Delbert L. (Dave) Davidson

Owner

