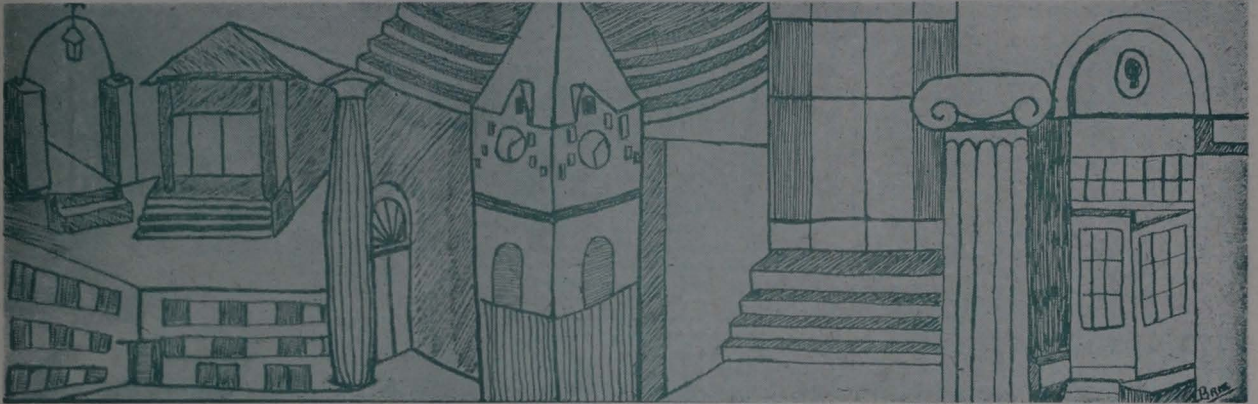


Merry

Christmas



The Glenville Mercury

Vol. XXXIII No. 7

Glenville State College, Glenville, W. Va.

Wednesday, December 13, 1961

'Tidings of Joy' Is Title of Annual Choir Concert

Director Coleman Announces Cast, Crews in 'Hamlet'

"Hamlet" is tentatively set for the first week of third term. The dates are Monday, Jan. 22; Tuesday, Jan. 23, a matinee performance; Thursday, Jan. 25 and Saturday, Jan. 27. High school students may be invited to the matinee performance, announces Mr. W. S. E. Coleman, director.

James Booth will portray Hamlet. The King and Queen will be played by Larry Wolfe and Elizabeth Beall.

Metz Is Horatio
Linda Lambotte will be Ophelia; William Spelbring, Laertes; and Harry Lynch, Polonius. Harold Metz will play the part of Horatio.

Also featured in the cast will be Dwain Wilcox, Edward Nichols, William Shinn, James Buck, Wayne Hardman, Marjorie Roth, Jerry Morgan and Jack Rhoades.

The soldiers will be William Shinn, Dwain Wilcox, Edward Nichols and Jerry Morgan.

Assistant Director Named
Patricia Hornor, assistant director, will be in charge of lights.

Marjorie Roth is head of sound. Others working on sound are Judith Busch, Keith Smith and Michael Eberbaugh.

William Spelbring is designing the set. Margie Simmons will be acting coach.

Mr. Al Richard Moldroski, assistant professor of art, is advising the construction of weapons. Jerry Morgan is making the swords.

Production coordinator is Dwain Wilcox. The soldiers will help on the scene shift.

Beall Designs Costumes
Costumes will be made by Greta James, Sherry Curtis, Mrs. Harry (Continued on Page 4)

Program Features Student Soloists

"Tidings of Joy" will be presented by the GSC Choir in the annual Christmas Concert, Sunday, Dec. 17, at 4 p.m. at the Trinity Methodist Church. Mr. Alexander Zerban, assistant professor of music is director of the Choir.

Singing of "O Come, O Come Emmanuel," a plain chant, and "Fanfare for Christmas Day," by Martin Shaw, will open the concert.

Several soloists will be featured in "The Christmas Story," by Heinrich Schutz. Sondra Moore will be the Angel; Paul Wigal, the Evangelist, and William Snyder, King Herod. William Snyder, Paul Wigal and Mr. Alexander Zerban will sing the parts of the Wise Men. The women of the Choir will sing the Shepard's part; and the men, will sing the High Priests and Scribes. The entire choir will be the chorus of Angels.

(Continued on Page 3)

Beryl Langford Is New Registrar

Mr. Beryl Langford has been employed as registrar and as assistant professor of education at GSC, announces President Harry B. Heflin. Mr. Langford will assume his duties sometime between Jan. 1-22.

A native of West Virginia, Mr. Langford is now an assistant professor at Michigan State University. He attended Glenville State College, received his BS and MA degrees in education from Michigan State University.

Mr. Langford's past experience in (Continued on Page 3)

Christmas Recess Begins Dec. 19 Classes Resume January 3, 1962

1961 Christmas recess will begin Tuesday, Dec. 19, at 4:30 p.m. and end Wednesday, Jan. 3, at 8 a.m. Those students who are absent from classes on Dec. 19 or Jan. 3, except in case of illness, will be required to submit make-up work to their instructor who in turn must submit this work to the credits committee for approval.

Concert Band Has Christmas Program

The 52-piece GSC Concert Band, under the direction of Dr. David J. Ernest, presented the annual Christmas concert Dec. 12, in the college gymnasium.

The numbers played included "Burst of Flame," "Trumpet in the Night" featuring Clarence James, soloist; "Folk Song Suite," and "Three Songs for Christmas."

Ending the program was the popular John Phillip Sousa march "The Thunderer."

Mrs. Eileen Wolfe, assistant professor of home economics and dietician for the College, has announced the dining-hall menu for Monday, Dec. 18. Menu will consist of iced fruit cocktail, roast turkey, mashed potatoes and gravy, green beans (French style), dressing with giblets and oysters, cranberry nut salad, relishes, hot rolls, oleo, pineapple preserves, mincemeat pie and hard sauce, and coffee.

Christmas dinner will be served from 5 to 6 p.m. indicates Mr. Vernon Smith, manager of the College Cafeteria.

(Continued on Page 4)

Chimes Ring Out On GSC Campus

The chimes ring out again. It has become a lovely custom at GSC for the Christmas season to be ushered in on the campus by the sound of carols coming from the clock tower.

The carols are played from the console of the organ in the auditorium and are electrically amplified and heard from a speaker installed in the clock tower.

Miss Bertha E. Olsen, assistant professor of music and Mr. Charles D. Patterson, assistant professor of library science and college librarian, are alternating in playing the music.

(Continued on page 4)



GSC CHOIR MEMBERS are pictured above as they were hard at work preparing the annual Christmas Concert to be presented Sunday, Dec. 17 at the Trinity Methodist Church. "Tidings of Joy" is the program title and Mr. Alexander Zerban, assistant professor of music, is choir director. Several soloists will be featured in "The Christmas Story." (MERCURY photo by Frederick)

Mercury Poetry Contest Winners

First Place

WHERE

Mist falls
On the quiet figure.
Footsteps
On the silent road.
Someone.
Who?
He can't remember,
Waits in some far-off abode.

Leaves fall
On the quiet figure.
Swishing
In the silent road.
Somewhere.
Where?
He can't remember,
Lies in sorrow, his abode.

Snow falls
On the quiet figure.
Crunching
On the silent road.
Nearly,
But not quite remembered
Is his empty, dark abode.
— William Spelbring

Second Place

HISTORY NOTES

History lectures are not
Conducive to alertness. I
Am sleepy and Imperialism
And Liberalism are like
Dry, withered branches of
A dead tree. My mind. . .
MILITARISM . . . Wanders to
Things alive and meaningful.

World War I was . . . this
Seat is hard. I would
Leave, but I falter.
He who hesitates is . . .
Too sleepy to move!

World Armaments Race

Political and Social
Conditions have been — the
Tennis players smell
Sweaty and we've never had
Today before.

Bismarck fell from office
And I have a cold and a
Hole in my left sock.

Indian Summer of Liberalism

Thirty minutes to go . . .
— Elsie Marie Deal

Social Calendar

DECEMBER

- 13 Kappa Sigma Kappa Dinner
— Colonial Room—4:45-6 p.
m.
- 14 TV Broadcast—College Choir
— Weston 6:30-7:30 p.m.
- 14 Christmas Party — Holy
Roller Court — Louis Ben-
net Lounge — 7-10 p.m.
- 15 Mix — Kappa Sigma Kappa
— Student Union — 8-11 p.
m.
- 16 Party for Faculty, Staff and
Families by Dr. and Mrs.
Heflin — Louis Bennett
Lounge — 3-5 p.m.
- 16 Snowflake Ball — Political
Science-International Rela-
tions Club — Student Union
— 9-12 p.m.
- 17 Concert — College Choir —
Trinity Methodist Church —
4 p.m.
- 17 Caroling — College Choir
and Verona Maple Hall —
Verona Maple Hall — 8:45-
10 p.m.
- 18 Salem vs. Glenville — Col-
lege gym — 8 p.m.
- 19 Christmas Recess Begins —
4:30 p.m.

Church Activities Include Students

BAPTIST: Deronda Jones, pro-
gram chairman, has announced
that there will be a special Christ-
mas program for the Baptist Stu-
dent Youth Fellowship, Sunday,
Dec. 17, at 6:45 p.m. Miss Jones is
in charge of the program. All stu-
dents are welcome to attend.

CATHOLIC: The Newman Club
is continuing discussion on the Pro-
testant Reformation. Their tenta-
tive plans include Mass on Christ-
mas eve, midnight to 1 a.m., and
New Year's Day Mass, 9 a.m.

This is the first year for the re-
organized Newman Club on campus.
It is an international federation
which was started at Oxford Uni-
versity by John Henry Newman.

The purpose of the Newman Club
is to provide a chaplin for Catholic
students on a secular campus. The
primary interest is three-fold: reli-
gious, educational and social.

Father Raymond, of Spencer,
chaplin for the group, is in Glen-
ville all day on Sunday, Monday,
and half a day Tuesday. Father
Raymond announced the intention
of the Newman Club becoming a
(Continued on Page 3)

Original Offerings Reviewed At Meet

An original one-act play, "X x Y
equals Z" by Harry Lynch, English
and speech student, was discussed
by the Literary Club Sunday after-
noon in the Lounge of Louis Ben-
nett Hall.

A script-in-hand presentation of
the play was given by a group from
the speech department. Those who
read parts were William Spelbring,
Harold Metz, Professor William S.
E. Coleman, Elizabeth Beall and
Dwain Wilcox.

The winning poems in the recent
poetry contest were read and com-
mented upon.

Patricia Hornor, Elsie Deal, Wil-
liam Spelbring, Carol Cosby, Eliza-
beth Beall and Joyce Dulaney were
in charge of program arrangements.

Next issue of the **MERCURY**
will be Jan. 10, 1962.

Third Place

THIS IS LOVE?

Light, airy, and without a thought of reason it comes
Daring you to follow and drink of life
Forgetting all pasts, all yesterdays, all memories,
Forget! forget! for this is love.

You do forget, and ere you know,
You're drifting, floating — no, sailing over everything.
So high you sail, that dizziness conquers
And you care not, for this is love.

But by forgetting and by your dizziness
You are left defenseless — a naked, naive
Being among a world of hurled rocks and stones,
But why despair, for you're in love.

Then like a dark, invisible enemy comes reality,
Causing you to reel, to stumble, and to fall
Over those cold, hitherto unnoticed, stones.
And now it hurts, for this is life.

— Carolyn Berry

ABOUT THE AUTHORS -

WILLIAM SPELBRING is a junior English and speech student
from Westlake, Ohio. Spelbring is active in choir, Glenechoes,
Literary Society and this year he has appeared in "R.U.R." and
"Rope." He will be Laertes in "Hamlet." He is editor of the 1962
KANAWHACHEN.

ELSIE MARIE DEAL is a senior English and social studies
student from Glenville. Miss Deal is active in the Literary Soci-
ety, and she has been listed on the Dean's List.

CAROLYN BERRY is a senior English and library science stu-
dent from Walton. Miss Berry is a member of Literary Society,
Wesley Foundation and Xi Beta Tau.

ABOUT THE ARTIST -

CAROLYN BRISENDINE is an art and social studies student
from Clendenin. Miss Brisendine is president of Palette and Brush
Club, member of KANAWHACHEN staff. Page 1 and page 2
designs are the work of Miss Brisendine.

The Glenville Mercury

Student Newspaper of Glenville State College
Glenville, West Virginia

Entered as second class matter November 23, 1929, at the post
office at Glenville, W. Va., under the act of March 3, 1879. Pub-
lished every other Wednesday during the academic year except on
holidays by the classes in journalism at Glenville State College.

Subscriptions, \$2.00 per year — Telephone Ext. 39

STAFF

Editor	Judyth Mayhew
Photographer	Kenneth Frederick
Sports Editor	Keith Smith
Business Manager	Harry Hull
Circulation Managers	Brenda Hickman
	Joyce Jackson
Reporters	Elizabeth Beall,
	Lucille Butler, Brenda Hickman,
	Marjorie Roth, Keith Smith
Adviser	Virginia West
Engravings by Howard Hiner — Mt. State Photo Service	
Buckhannon	
Printed by the Elk Printing Company	
Clay	

Fairmont Falcons Prove Too Strong
G-Men Defeated 103 - 91 In Opener

Wellsburg Kiwanis
Invites Lillymen
For Tournament

Pioneers Will Face Wesleyan, Salem,
W-L and D and E In Coming Contests

The Fairmont-Falcons team that had fallen once to the G-Men were not to be denied twice in a row. The Falcons defeated the Pioneers on the Fairmont hardwood 103-91.

Fairmont jumped to a lead early in the first period and maintained a buffer of eight to 10 points throughout the game. The lead was never cut to less than six points.

The Pioneers had defeated Fairmont in the Weston Invitational Tournament 83-68, but the home court proved too much for the Pioneers in this second meeting.

Gain Early Advantage

In the first ten minutes of play, the Falcons scored 32 points to Glenville's 20. This first-period 12-point advantage proved to be fatal for the G-Men as this was the final margin that meant defeat for the Pioneers. At no time in the first half did Glenville launch a strong scoring attack.

The G-Men depended almost entirely upon outside shooting against Fairmont's tight zone defense. Bob Lambert who normally contributes 15 or 20 points was rendered virtually helpless by the Falcon defense, scoring only one field goal.

Larry Gandee, another good scorer, was also held to one field goal.

Eberbaugh Leads Scoring

The G-Men drew within six points of the Falcons in the closing minutes, but the threat was killed when the Falcons scored two consecutive goals.

Mike Eberbaugh was both the leading scorer and rebounder for Glenville, scoring 23. Carney and Smith followed with 16 each. For Fairmont it was Yost with 29, John Conway with 22 and Tristani with 21.

The Glenville Pioneers will again travel to Wellsburg for the annual Wellsburg Invitational Tournament, Dec. 15-16. While there the Pioneers will be guests of the Wellsburg Kiwanis Club, sponsors of the tournament.

There will be four teams participating in the tourney again this year. Along with Glenville will be West Liberty; Steubenville, Ohio; and the fourth team was not determined when the MERCURY went to press. This fourth position was occupied by Alliance of Pennsylvania the past year.

W-L 1960 Winner

West Liberty, last year's WVIAO regular season champion, will not be the power they were last year; having lost Parnett, Tegley, and company.

The Hilltoppers had played four times when the MERCURY went to press. West Liberty split their four games 2 and 2. The two victories being one over Piedmont, Ga., and Wheeling College.

Hilltoppers had but a one-point advantage when the Wheeling College game ended 64-63. The contest was on Wheeling's home floor.

Glenville was defeated by the College of Steubenville 87-67 in the past year's tournament. Steubenville will again be strong, having graduated only two starters.

All four teams will play two games each; consolidation and championship games are scheduled for Dec. 16.

Tonight the G-Men play Wesleyan for their third game of the regular season. The Pioneers have faced the Bobcats once before this year when the G-Men thumped them 87-71 in the Weston Invitational Tournament. This year the Bobcats are not the power of the conference that they have been the past few years.

Wesleyan has a young ball club that will take some thumpings early in the season but may prove to be tough by tournament time. The Bobcats suffered when Marlo Mills, a standout of the past season, was declared ineligible. The Pioneers won both contests with the Bobcats the past season.

Meet Tigers Dec. 18

The Salem game to be played here Dec. 18 will be the last home game before the holidays. Salem's record is 1-1 at press time having won one from Shepherd 92-89; they had to come from behind to win. The Tigers dropped their second game to a solid Davis-Elkins team.

Salem will miss the fine play of Christy this season. However, they have good experience in Perkins, Smith, Sinnott, and Kaminsky. They are certain to be a strong contender this season.

Holiday Tournament

Pioneers will be at Beckley for the Holiday Tournament Jan. 1-2. Then they play the first regular season game of 1962 on Jan. 5 here against West Liberty, conference champions the past season.

The Hilltoppers will once again be hard to beat. They have ample lettermen returning and a transfer who will be eligible second semester that should help them greatly.

Play Away Jan. 8 and 10

Following the West Liberty game, it will be Salem, Jan. 8, and Davis-Elkins, Jan. 10, again. Both are away games.

Results of the West Virginia Tech game played Monday night were not available when the MERCURY went to press.

Holy Roller Court
Selects 11 Pledges

KEK Fraternity
Lists 17 Pledges

Eleven men have recently been attired in the familiar dress of Holy Roller Court pledges. They wore black derbies and raincoats and carried dictionaries and umbrellas the past two weeks. This week each member wore a white shirt, tie, dress pants and sports coat or suit.

A pledge committee of three members: Delford Watson, Gene Davis and John Hopson directed the pledges in their activities.

The work done by the pledges was constructive for both the town and campus. Assignments included waxing the Glenville Fire Department Fire truck, cleaning and waxing advisers' cars and waxing the Fire Department emergency car.

Pledges had a shoe shine stand in front of the Student Union on Tuesday and Thursday evenings. They are not to cut classes and must attend a college activity during the initiation period.

On the last night of the pledge period, the pledges must produce a show for the enjoyment of Court members.

Members of the pledge class are James Beckner, Kenneth Mann, Edgar Buster, Patrick Briscoe, Larry Stelb, Lane Jack, Richard Turner, Neil Johnson, Roger Hicks, Mark Downey and Jackson Howell. Neil Johnson is pledge captain.

Officers of the Court are Bill Shinn, Judge; Delford Watson, sheriff; Dennie Oakleaf, clerk; Ernie Moore, treasurer; Bill Young, presecuting attorney; Gene Davis, defense attorney; and John Hopson, costodian. Advisers are Mr. Kent Monroe and Mr. Wayne Scott.

John Lucas, president, announces that the Kappa Sigma Kappa fraternity has 17 promising pledges now participating in the pledge program.

This program is under the guidance of co-pledge masters Phil Clarke and Jim Simmons. The program is now in its third week and will continue for one more week.

Members of the pledge group are John Harris, pledge class president; Dick Taylor; Robert Pfaff; Ed Pierpoint; Ted Hauman; Paul Taylor; Dale Levering; Robert Days; Jack Brown; Terry George; Joe Fields; Randy Dotson; Gary Jones; John Lustig; Nick Murin; Ernest Smith and Martin Dotson.

Pledges are required to do work for big brothers, address all members as "sir" and carry a neophyte book. The first week the pledges wore suits and this past week they carried bricks with KEK painted on them.

Pledges cleaned the graveyard behind Louis Bennett Hall recently and arose early this past Saturday to paint the KEK rocks. Next Saturday the pledges will be downtown sweeping the streets.

Officers of the Kappa Sigma Kappa this year are John Lucas, president; Nick Nichols, vice-president; Eugene Davis, secretary; Jim Simmons, treasurer; and Dwain Wilcox, corresponding secretary.

BOX SCORE:

GLENVILLE	FG	F	TP
Lambert c	1	4-7	6
Eberbaugh c	10	3-4	23
Bickel c	5	2-2	12
Maxwell, Bill g	4	0-0	8
Smith g	6	4-6	16
Carney g	6	4-4	16
Gandee f	1	3-5	5
Shepherd f	1	1-2	3
Eddy g	1	0-0	2
Totals	35	21-30	91

FAIRMONT	FG	F	TP
Conaway, D. c	3	7-8	13
Quattro f	3	0-0	4
Conaway, J. c	10	2-6	22
May g	0	1-2	1
Darius g	4	3-5	11
Nuzum f	1	0-0	2
Yost f	10	9-10	29
Tristani g	8	3-4	21
Totals	39	25-35	103

Church Activities

(Continued From Page 2)

campus organization, and participating in IOC. For this purpose, Dr. Espy W. Miller has been named faculty adviser.

Officers of the Newman Club are Arthur Coughlin, president; Walter Chezlick, vice-president; Rita Patterson, secretary; and George Machak, treasurer.

METHODIST: A discussion and film series on the Major Religions of the World is being conducted by the Wesley Foundation, Methodist Student Youth group.

These discussions will include Christianity, Judaism, Shintoism, Moslem, Hinduism, Taoism, Confucianism, and Buddhism.

Meetings are at 6:30 p.m., Sunday, in the Wesley Foundation. All students are welcome to attend.

Sixteen Teams Vie
In MAA Program

Intramural basketball competition began this past Thursday. Rosters of the 16 participating teams in MAA play were submitted to Coach Lilly, Friday a week ago.

Teams will be Ruffians, Mavericks, Wazoos, Hustlers, MENC, Spats, Holy Roller Court, Pen City Boys, Stump Jumpers, Beaver Shooters, Trotters, Ten Highs, Kappa Sigma Kappa, Kappa Sigma Kappa Pledges, The Untouchable, and Holy Roller Court Pledges.

Because of the number of teams this year, half of the teams will play one Thursday and the other half the next Thursday.

This year as in the past there should be some tight competition. MAA not only will provide an outlet for the excess energy and weight of the men but it should also prove entertaining. MAA is second only to the Verona Maple League for body contact.

Officiating will be done by members of the men's officiating class.

Beryl Langford

(Continued from Page 1)

cludes four years as a teacher in the public schools of West Virginia long and broad experience in Safety Education, and five and one-half years as a staff member at MSU.

He is married to the former Miss Leo Wolfe, of Baldwin, and they have a married daughter living in St. Albans.

For haircuts and flattops visit

Bantz Barber Shop

Doc Layfield - Bantz Collins

High School Letters
Are Now Banned

The G-Club has announced that high school letters are not to be worn on campus after Dec. 19.

This announcement has been sanctioned by the administration. If any student does not comply, proper action will be taken to see that he does.

College letters are for college; high school letters were for high school.

Tidings of Joy

(Continued from Page 1)

The Polyphonic Choir, small choir, will sing "O Magnum Mysterium," Victoria; "Bring A Torch Janette Isabella," arranged by Shaw-Parker; "Midwinter Carol," Holst; "I Saw Three Ships," Stevens, arranger; "Edmund Rubbra"; and "The Three Kings," Healey William.

The entire choir will sing "Christmas Day," by Holt. The concert will be concluded with a humorous selection "Twas the Night Before Christmas," Moore-Darby. Elaine Allison, Carolyn Altman, Myrna Goff; Patricia Jones, Linda Lamblotte and Carolyn Norman will have speaking solos. Paul Wigal will be tenor soloist.

There is no admission.

Merry Christmas
from the
Conrad Restaurant

Best of Luck Pioneers!
Kanawha Union Bank
Glenville, W. Va.
Over fifty years of service to Gilmer County
Member of Federal Deposit Insurance Company

Keepsake Diamonds
Hamilton, Elgin, Bulova
Gifts for all occasions
Watch repair and jewelry
All work guaranteed

Hamric's Jewelry
107 East Main
Box 476
Glenville, W. Va.

Cosmetics, jewelry
cards for all occasions,
fountain service
at the

G and D Store

Activities Fees Are Appropriated For Seven Departments on Campus

GSC students pay a \$10 activity fee for each semester. This fee is divided and given to various departments and organizations sponsoring student-attended activities.

Sorority News

Xi Beta Tau

Xi Beta Tau sorority held a banquet in the Colonial Room of the cafeteria on Thursday, Dec. 7.

Xi Beta Tau is completing plans for rushing which will occur at the close of the first semester and is planning to sponsor a mix after one of the basketball games. The sorority has also ordered sweat-shirts with sorority name and emblem.

This sorority will sponsor the White Carnation Ball in the spring.

The members recently conducted a clothing drive for needy families in the area.

Winona Stewart, who was named to the 1961-1962 Who's Who, served as vice-president of Xi Beta Tau the past year and is serving as parliamentary for the current year.

Phi Mu Gamma

Phi Mu Gamma held a combined Christmas party and dance at the Conrad Hotel on Friday, Dec. 8, from 8 to 12 p.m.

Kappa Sigma Kappa pledges helped the sorority with the decorations and the Christmas tree. John Lustig, KEK pledge, played the part of Santa Claus and presented all those who attended with a gift.

Chimes Ring Out

(Continued from page 1)

This year the chimes were first heard on Friday, Dec. 1, and may be heard daily between 1 and 1:30 and sometimes in the evenings, until the beginning of Christmas recess.

Norma Curry, 1961 graduate, is teaching physical education at Williamstown. Ron Prunty, 1960 graduate, is also teaching at Williamstown.

Colleen's Beauty Shoppe

462-7971
Lewis Street

Forty percent of the fee is awarded to the athletic department. This amount admits students to all ball games in the GSC gym or at Rohrbough Field.

MERCURY receives 15% for all students subscriptions to the college paper. This money plus advertisement pays for picture engravings and printing of the paper.

Speech and music departments each receive 5%. Ten percent of the fee goes to the Lyceum fund. Cheerleaders receive 1.5% and 8% goes to the Student Health Fund.

Student Council receives 15.5% of the fee.

Mr. Lloyd Jones, business manager, announces these figures as of Nov. 30: Athletics, \$2996.39; MERCURY, \$1,808.85; speech and debate departments, \$480.70; music, \$914.52; lyceum, \$2587.97; cheerleaders, \$64.62; Student Council, \$2362.26; and the student health fund shows a deficit of \$519.82.

Students Council's 15.5% is a reserve fund and \$500 of the Student Council fund will go to health fund if approved.

Heflins Hold Party For College Staff

President and Mrs. Harry B. Heflin will entertain the faculty and their families, the administrative staff, the maintenance staff, and retired faculty staff and their families.

Santa Claus will be present at the party in Louis Bennett Lounge on Saturday afternoon, Dec. 16, from 3-5.

Mr. Alexander Zerban and the Genechoes will present a musical program.

Christmas Recess

(Continued from Page 1)

Mr. Smith reminds that reservations will have to be made by people who regularly do not eat in the cafeteria. These reservations may be made by calling Ext. 48 not later than 4 p.m. Dec. 16.

Corsages and flowers for all occasions at

Minnich Florist

Re-Study Group Meets on Campus

Meeting of the Campus-Area Committees for the Re-Study of Teacher Education was held on campus Dec. 9.

Schedule for the day's meeting included a coffee-time in Louis Bennett Lounge from 9:30 to 10; the general session, with orientation by Miss Genevieve Starcher and Mr. Clarence Young of the State Department of Education, 10 to 10:45; committee meetings, 11 to 12.

Lunch, 12 to 1; committee meetings, 1 to 3:15 at which time the meeting adjourned.

Discussion concerned the purposes of the public school in the areas of study, a "job description" of the role and function of the teacher in his area of responsibility and the competencies believed essential to carry out this role.

The teacher was discussed as a director of learning, as an adviser and guide, as a mediator of culture, as a link with the community, as a member of the profession.

This area meeting was a part of a state-wide project under the direction of the State Board of Education to re-study and evaluate the methods presently used in training teachers. The other 15 teacher-training institutions in West Virginia will hold meeting of a similar nature at a later date.

Approximately 120 off-campus people including superintendents, supervisors, principals, and class room teachers, attended the meeting.

Party Is Planned For Kindergarten

Miss Jewell Matthews, kindergarten director, has announced that the kindergarten will hold its annual Christmas party on the morning of Dec. 19.

The children will do their own decorating and as many child-made decorations as possible will be used. To carry out the Christmas theme the children will prepare red and green jello which will be served to the guests.

A program will be presented consisting of Christmas songs, games, and stories in which the true meaning of Christmas will be brought out.

The children have drawn names for a gift exchange with a .50 cent limit on each gift. In doing this, the idea of the enjoyment of giving to others is stressed.

This is one of the two times during the year that the families of the kindergarten meet.

Director Coleman

(Continued From Page 1)

Lynch, Margy Simmons, Patricia Hornor, Judith Gainer, Carolyn Lowther, Elizabeth Beall, Marilyn Igou, Margaret Hofmann and Linda Sands. Elizabeth is designing the costumes.

Elsie Deal is doing research on medieval crests for banners. Hand props and the set will be managed by the Play Production II class.

The set is being constructed so that it may be easily packed for touring.

For the best in hairstyling visit

Gene's Barber Shop
Gene Ellyson and Jimmy Fitzwater



CONGRATULATIONS GO to students pictured above who are the winners of the third annual MERCURY Poetry Contest. From left to right are William Spelbring, first place winner; Elsie Marie Deal, second place; and Carolyn Berry, third place. The winning poems were selected from 14 poems by six entrants.

(MERCURY Photo by Frederick)

Yearbook Editor Named

William Spelbring, junior speech and English student from Westlake, Ohio, has been appointed KANAWHACHEN editor for 1961-62 by the Student Council.

Spelbring is active in choir, small choir and the Genechoes. He has appeared in "R.U.R." and "Rope" and will be Laertes in the coming production of "Hamlet." He is also a member of the Literary Society and Library Committee. He is now pledging Alpha Psi Omega, national honorary dramatics fraternity.

Staff members appointed by the editor are Elsie Deal, business manager; Edward Nichols and Larry Wolfe, sports editors; Elizabeth Beall and Patricia Hornor, feature editors; Karen Brady, layout editor; Ruth Justice, advertising manager; Carolyn Brisenidine and Larry Wolfe, photographers.

Miss Cathryn Godfrey has resumed her duties as assistant to the librarian at GSC after having been granted a leave of absence for nine weeks in order to do directed teaching at Buckhannon.

Home Economics Club Initiation Set Dec. 14

Phi Delta Phi, home economics sorority, will have a formal initiation dinner in the Colonial Dining Room Dec. 14.

A pizza party was held recently in the home economics department for the new prospective members. Prospective members present were Loretta Sue Wray, Sharon Kay O'Dell, Joyce McCullough, Joyce Hartley, Judith Criss, Donna Maxwell, Laura Rose, Barbara Baughman and Carol Hickman.

Men's and Women's Sports wear

You come and see!
Stop and shop at

Howes' Dept. Store

Headquarters for your Christmas shopping at the
Ben Franklin

Parson's Jewelry

Glenville and Grantsville

All work guaranteed.

Watch and Jewelry repairing
Bulova and Elgin Watches
Hallmark Cards
Appliances

Dine now with your friends at
Murphy's Restaurant

Special - Hamburgers, Pizza, Hotdogs and spaghetti. Latest records on the Jukebox. Air-conditioned.

7 South Lewis Street

Turkeys, and the trimmings, Specialties!

Stop and shop at the

R. B. Store

Glenville's only drug store

Your necessities available at

Summers' Pharmacy

Reed's Shoe Repair

And

Leathergoods

And

Sporting Goods Store

Complete Shoe Service, Handmade Leather Items, Complete Line of Sporting Goods.

104 Howard St. Glenville, W. Va.
Store Hours 8 to 5
W. F. (Fred) Reed