

The Glenville Mercury

Vol. XXXIV No. 8

Glenville State College, Glenville, W. Va.

Wednesday, January 16, 1963

MISS HOFFMANN IS GSC WINNER OF WVIAC TITLE

Margaret Anne Hoffmann, junior speech and English student from Parkersburg, was chosen as GSC representative in the GSC Scholastic Queen contest. Miss Hoffmann is a member of Phi Mu Gamma sorority, Ohningohov Players and Alpha Psi Omega. She was sponsored by Phi Mu Gamma sorority.

The GSC candidate was chosen Thursday, Jan. 10, at a program beginning at 7 p.m. at the Gilmer County Court House from women representing 10 various campus organizations.

Dr. Espy W. Miller served as master of ceremonies and Mr. Leiland Byrd, GSC athletic director, crowned the winner, who was chosen by three off-campus judges. They were: Mr. Linn B. Hickman, editor and publisher of the Glenville Democrat and Pathfinder; Mr. Jack V. Stalnaker, Gilmer County Centennial Chairman and an employee of the Kanawha Union Bank and Mr. J. W. Ferrill, Glenville attorney.

Contestants were rated on beauty, poise, personality, dress and oral expression. Each contestant had maintained an overall scholastic average of 2.5 or more for at least two semesters previous to this year.

The winner of the contest will represent GSC along with representatives from other participating state colleges at the Conference Basketball Tournament in Charleston Feb. 22 and 23. From this group the state WVIAC Queen will be chosen.

All candidates will be entertained at a luncheon given by the Charleston Lions Club, be introduced and presented with corsages between halves at the second game of the Tournament. They will be guests on Saturday at a Conference luncheon and at a tea at the Governors mansion, and will be introduced between halves at the consolation game.

(Continued on page 4)

Student Union Plans Progress

Plans for the expansion of the Student Union and cafeteria are still being made. Bids for the proposed expansion were opened Dec. 11 by the State Board of Education.

If there is enough money to cover the bid, the State Board will award a contract Feb. 6. Provided that the Board awards a contract, work would begin on the Student Union March 1.

Meanwhile, the maintenance crew has completed an addition to the transformer at the Student Union. This is a preliminary step in plans for the expansion.

Blueprints of the proposed Student Union expansion are posted in the glass enclosed bulletin board in the Union.

Contractor for Unit B has stated that the Unit will be completed as scheduled, Jan. 21.

The auditorium will probably be completed by March 1.

The first floor of Unit B will be the location of three classrooms, work room for the dramatics department and one office.

On the second floor will be offices of Dean of Men and the Dean of Women. Little theater is also found on second floor. On third floor there are to be two classrooms and 14 faculty offices.

DELTA ZETA SORORITY



Pictured above are Delta Zeta Sorority Members. Standing, left to right, Patricia Cline, Sue Ellen Garret, Mary Margie Kramer, Patty Dent, Carolyn Dotson, Electa Greenlied, Brenda Hamrick, Carol Wolfe, Patricia Burch. Seated, left to right, Carol Cosby, Marlene Jurasko, Joyce Jackson, Mary Helen Swisher, Rita Patterson, Lois Friel, Yvonne Row. Mer—photo by Frederick

GSC Sorority Goes National; Xi Beta Tau Now Delta Zeta

Dynatoners To Play For Annual Dance

The International Relations-Political Science Club will sponsor the annual Snowflake Ball in the Student Union on Jan. 26, from 9-12 p.m.

A Snowflake Queen will be chosen in the Union by student ballot. The voting will be conducted by five cents for nomination and a penny a vote thereafter.

The Dynatoners from Salem will play for the dance and tickets will be \$2.00 for advance sale and \$2.50 at the door.

Students are especially encouraged to stay on campus for this dance, since it is the first weekend in the new term and will be preceded by the GSC-Concord basketball tilt on Friday.

Alpha Psi Omega Holds Initiation

Alpha Psi Omega initiated six pledges Tuesday evening, Jan. 8 at Kanawha Hall. Those being taken into active membership were Greta James, Sherry Curtis, Jerry Morgan, Rodnal Skaggs, Edward Nichols and Karolyn Lowther.

Absent from the meeting were John Napolitano and Michael Eberbaugh. They will be initiated in the spring.

An honorary dramatics fraternity, membership in Alpha Psi is based on a point system. Members are active in every area of the speech department.

Mr. William S. E. Coleman is faculty sponsor of Alpha Psi.

Professor Baird Will Leave GSC

Mr. Andrew W. Baird, assistant professor of sociology at GSC since September 1960, has accepted a position at Mississippi State University as assistant project director of the Social Science Research Center. He is leaving GSC at the end of this semester.

Mr. Baird received BS and MS degrees from Mississippi State University. He also taught at Mississippi State University from 1957 to 1960.

Xi Beta Tau, a local sorority became Theta Xi chapter of the Delta Zeta national social sorority. Delta Zeta is a member of the National Panhellenic Council.

Formal pledging will take place in late February or early March to enable new pledges to become charter members.

The official flower is the pink killarney rose, colors are old rose and vivid green, the jewel is the diamond.

Sponsors for the local chapter are Mrs. William Douglas and Mrs. Jesse Lilly. Patronesses are Miss Virginia West, Miss Emma Jean Woofler and Mrs. Byron Turner.

Delta Zeta was founded in 1902 at Miami University, Oxford, Ohio, and now has the largest membership of any social sorority in the United States. The purposes of the sorority are: (1.) To unite its members in the bonds of sincere and lasting friendships; (2.) To stimulate one another in the pursuit of knowledge; (3.) To promote the moral and social culture of its members; (4.) To develop plans for guidance and unity in action; objects worthy of the highest aim and purpose of associated effort.

For the benefit of its members, Delta Zeta has a National Loan Fund, the Elizabeth Coulter Steph-

enson Fund, and the Elsa Ludeke Memorial Fund.

Through the "Adventures in Friendship" set up by the National Philanthropic Program, within the sorority, contributions have been made to Gallaudet College, for the deaf, in Washington, D. C. At the 1962 National Convention \$2500 was presented to the American Hearing Society to assist in the establishing

(Continued on page 4)

Centennial Preparations Continue on GSC Campus

This year, 1963, West Virginia will enjoy the most publicized, most expensive and most eventful year in its history. Centennial preparations have spread to Glenville State College.

The college has pledged

Registration Set January 21-22

The Registrar's office has announced that registration for the second semester of the 1962-63 Academic Year will be conducted in the Health Building between 8 a.m. and 12 noon and 1:30 p.m. and 5 p.m. on Jan. 21 and 22.

1. First time students, juniors and seniors will register on Jan. 21. First time students will be scheduled to register at 3:30 p.m.

2. Freshmen and sophomores will register on Jan. 22.

3. Students may draw time schedule tickets between the hours of 10:30 a.m. and 11:30 a.m. and 1:15 p.m. and 2:15 p.m. on Jan. 16, 17, and 18.

Special attention shall be given to the following items:

a. Ball point pens MUST be used to fill out all registration forms.

b. Make sure to mark all courses which the student wishes to AUDIT.

c. Please use Department and Course Numbers — Eng. 101, Hist. 12, etc.

d. Record the proper number of hours credit for each course and record the TOTAL number of hours correctly.

e. Draw lines to separate 1st term, semester and 2nd term courses.

FOREIGN FILMS ARE PLANNED FOR FEBRUARY

The second semester foreign film series membership drive is now underway. Alpha Psi Omega members are taking subscriptions so that the new series will begin early in the next semester.

Seventy members have been set as the minimum membership so that seven films may be offered for \$5. If additional membership is acquired, then the series may contain ten to eleven films. Ten films were offered in the last series.

The films are of the highest quality as was demonstrated in the last series. Such film greats as "Two Women" starring Sophia Loren, "The Sorceress" with Marina Vlady and "The Sheep Has Five Legs" starring the great French comedian Fernandel, are only a few films that were in the last series.

There is a great diversity in the presentation of films from foreign countries. There were eight countries represented in the last series of which one was from a communist country, Poland.

Most films in the past series were recognized internationally for their style, acting or other features. The Japanese "Gate Of Hell" is given wide praise for its outstanding color and is considered to be a "miracle of color," and Sophia Loren was given an Academy Award for best actress for her role in "Two Women."

(Continued on page 4)

Exam Schedule

The examination schedule for the first semester has been released by the Dean's office.

The examination schedule will begin at 8 a.m. on Thursday, Jan. 17 and end at 2:45 p.m. on Friday, Jan. 18.

All classes meeting at:

8:00 will have examinations on Friday at 12:45-2:45 p.m.

9:05 will have examinations on Thursday at 12:45-2:45 p.m.

10:10 will have examinations on Friday at 10:05 a.m.—12:15 p.m.

11:15 will have examinations on Thursday at 10:05 a.m.—12:15 p.m.

12:20 will have examinations on Thursday at 2:50-4:50 p.m.

1:25 will have examinations on Friday at 8:00-10:00 a.m.

2:30 will have examinations on Thursday at 8:00-10:00 a.m.

3:35 and classes having a conflict in the above schedule (see Dean for arrangements)

Artist Moldroski Submits Works for W. Va. Contest

By William Spelbring

Mr. A. R. Moldroski, assistant professor of art, is going to enter the centennial contest for artists. I felt that the student body of GSC would be interested in the activities of a faculty member in his off-campus time so I requested an interview with Mr. Moldroski. The conversation was as follows:

Glenville Co-ed Jorene Butcher Receives Honor

Jennie Jorene Butcher, only daughter of Mrs. Roland Butcher and the late Mr. Butcher of Glenville, was chosen as one of the 15 finalists in the State Centennial Queen's Pageant held in Charleston Dec. 14 and 15.

A junior home economics and business education student, and an honor student at GSC, Miss Butcher is president of Alpha Delta Epsilon business fraternity, state president of College Club section of the W.Va. Home Economics Association, a member of SNEA, a member of Phi Delta Phi Home Economics Club and was recently named to "Who's Who." She has also received many district and state honors in 4-H, and is active in the Glenville Baptist Church.

Other GSC coeds who represented their home counties in Charleston were Nyla Jeanette White, home economics and social studies senior from Weston, Lewis county; and Sharon Bumgarner, English and speech freshman from Elizabeth, Wirt County.

Lena Ruth Justice, senior mathematics and physical science student was selected as the Wirt County alternate when the county contest took place.

Japanese Film Set for Jan. 28

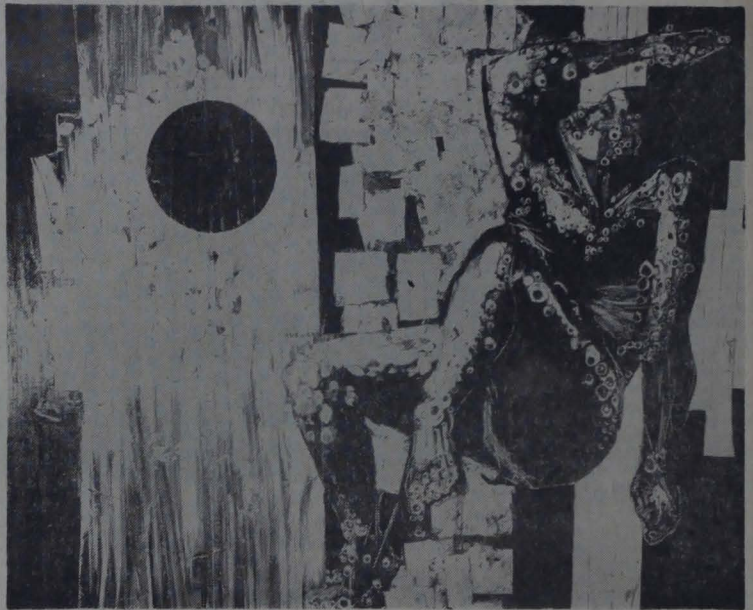
Coming to the screen at Glenville State on Jan. 28 will be the famous Japanese film, "Throne of Blood". The film, which is the Japanese version of Shakespeare's "Macbeth", is considered one of the best Japanese films ever produced. "Throne of Blood" has never been shown out of New York and probably will never be released commercially. This film ends the first semester foreign film series. "End of Innocence" an Argentine film was shown on Jan. 15. The film portrayed the love of a young girl for a politically-minded young man with their love affair ending in tragedy.

Phi Mu Gamma Honors Mothers

The mothers of Glenville State College students will be honored by a special week end brought about by the Phi Mu Gamma Sorority to be held from May 11 to 13. All organizations and singing groups on campus have been invited to participate in the Mother's Day Sing, which will take place in the new amphitheater on Sunday afternoon, May 13. A trophy will be awarded the best group and certificates will go to second and third place winners.

Tentative plans are to choose a "Mother of the Year", how she is to be chosen is undecided. All sorority women are selling "Worlds Finest Chocolate" candy.

"AWAKENING GIANT"



Q.—What made you decide to enter the centennial art contest?

A.—I am interested in any show or exhibition where I can place my work before the public eye. This was my main reason for entering the contest. An added incentive, of course, is the \$1963 first prize. I heard about the contest by word of mouth. The officials arranged it so that the contestants would have plenty of time to complete their work.

Q.—How did you decide to go about planning your work?

A.—First I tried to decide what would best suit the purpose of the exhibit and, would at the same time, be of interest to the greatest number of viewers. Instead of choosing a small segment of West Virginia's history or folklore I felt that the work should represent some facet of the entire state. To do this I felt that it had to be symbolic.

Q.—What type of work are you planning to enter for the contest?

A.—I am going to enter two types of work, a painting and a piece of sculpture.

Q.—You said that the work had to be symbolic. What does the painting symbolize?

A.—The reclining figure in the painting represents the state. I feel that the state is potentially great in natural resources and wealth and is just now being aroused. I have therefore used for my theme "Awakening Giant."

Q.—I notice that the painting is of a monochromatic color scheme. What was the reason for this?

A.—The pigment I used is asphaltum. It is a tar product and represents the organic character of the state. The figure, done with the asphaltum is also representative of this quality. The silver leaf I incorporated into the painting symbolizes the wealth of the state.

An eclipse of the sun opposite the figure represents the renewed interest in the growth of the state.

Q.—Had you planned all this symbolism before you started to paint?

A.—The general idea had been planned, but it is difficult to be specific about all the details of the painting because a painter works intuitively to create the emotional impact he desires.

Q.—Does the sculpture follow the same theme?

A.—Yes, the same figure, the "Awakening Giant," is the theme. All the feeling of the painting with its various symbols had to be incorporated into the sculpture. Sculpture does not offer the same opportunities as painting because it deals with actual space while painting deals with illusory space. The sculptured figure has the same attitude as the figure in the painting, but there is a greater exaggeration of the awakening gestures.

Q.—What material did you use for the sculpture?

(Continued on page 4)

College Library Services Named; Past Is Related

By LINDA LEE SMITH

Are you in need of information that your textbook does not supply, or do you simply want something to read? If so, your problem will be solved if you will just enter the Robert F. Kidd Library.

Once you enter the door you will be greeted pleasantly at the front desk by Mrs. Dorothy Peterson, acting librarian, Miss Mary Susan Brown, assistant librarian, or perhaps Mrs. Elizabeth Turner or Mrs. Nancy Hill or any one of the 14 student assistants will help you find what you are looking for.

Library hours are 8 a.m. until 5 p.m. Monday through Friday; 6:30 p.m. until 8:30 p.m. Monday through Thursday; 8:30 a.m. until 12 noon on Saturdays and 6:30 p.m. until 8:30 p.m. on Sundays. Sunday evening hours were started a year ago on a more-or-less experimental basis and have been a success. Sometimes as many as 25 or more students use the library on Sunday evenings.

Although the library is primarily for the college, and located on the GSC campus, the public is also invited to use its facilities. Mrs. Peterson stated in a recent interview that few people outside of the college make use of the library.

The Library has not always been in its present location, nor did it have all of its present facilities. Originally located in the Old Administration Building, the College was able to announce a small library of indispensable books in 1881-82. Among these volumes were "Worcesters Unabridged Dictionary," "Websters Unabridged Dictionary," "Crabbe Synonyms," "Rogets Thesaurus," "Lippincotts Geographical Dictionary" and "Lippincotts Biographical Dictionary."

By 1891 the Library could boast of 500 titles and within two years this figure was doubled, and has been expanding ever since. At the present time there are over 38,000 volumes and the collection is still growing.

For many years the late State Senator Robert F. Kidd had been an ardent supporter of what was then known as Glenville Normal School. Consequently, he was instrumental in securing the appropriation for the new building, so it naturally followed that the new Library should be named in his honor.

(Continued on Page 4)

Rule Revision Requested

"For any classes missed on the school day preceding a holiday or on the first day of school following a holiday the teacher shall make an outside assignment more than ample to make up such work, and the completed work shall be submitted to the teacher within one week after the students return to class."

At Glenville State College a philosophy exists that appears to be either one of complete indifference to the students, a feeling that students are omnipotent, or a feeling that students are superhuman. Obviously, since the latter two are out of the question, the philosophy must be one of complete indifference.

Why else should a deaf ear be turned to legitimate excuse covering an absence on the day immediately preceding or following a recess? Surely in an institution of higher learning, we should be flexible enough to make allowances for illness. It would appear that we defeat our supposed objectives of turning out broad-minded individuals by enforcement of such harsh, "no-exception," restrictive measures.

As students, we are expected either not to get ill at all, choose the time and place we will be ill, or come to class regardless of a physician's instructions. These requirements are either impossible or asinine or both, and any measure requiring this, quite naturally, has the same qualities.

In the GSC Bulletin, under philosophy of the college, we find "Highly restrictive measures are kept to a minimum." If this be true, we should like to know the definition of "restrictive measures" and of "minimum."

We think that any ruling which is not flexible enough to allow for illness or unavoidable absences is surely outmoded and unjust, and we should be mature enough to recognize this, and effect either some sort of revision, or do away with it entirely.

—Larry Wolfe

Air Force Program Explained

At the present time the United States Air Force has many programs opened to qualified applicants. Some of these programs are pilot, navigator, electronics, administrative and personnel.

To qualify for these programs, men and women must be college graduates or will be graduated in the near future. If an applicant

qualifies and wishes to further his education, he may work toward his MA degree through the Air Force Institute of Technology and attend such Universities as Maryland and LSU.

For further information contact the Air Force personnel in the Student Union on Tuesdays from 9:30 —11:30 a.m.

THE GLENVILLE MERCURY

Student Newspaper of Glenville State College

Glenville, West Virginia
Entered as second class matter November 23, 1929, at the post office at Glenville, W. Va., under the act of March 3, 1879. Published every other Wednesday during the academic year except on holidays by the classes in journalism at Glenville State College. Telephone Ext. 39

STAFF

Editor Janet Long
Sports Editor John Napolitano
Photographers Kenneth Frederick, Robert Smith
Business Manager Arthur Coughlin, Jr.
Circulation Managers Brenda Hickman, Rita Patterson
Page Editors For This Issue:
Page 1 Janet Long, Linda Smith
Page 2 Mary Pauley
Page 3 Jerry Morgan, Larry Wolfe
Adviser Virginia West

Engravings by Howard Hiner
Mountain State Photo Service, Buckhannon
Printed by The Republican-Delta, Buckhannon



Pioneers Drop 4 Contests; Defeat D & E For Lone Win

By JOHN NAPOLITANO
The Pioneers dropped four games in five starts (games reported from Dec. 7 through Jan. 8). The lone win came over Davis and Elkins 97-73. Losses have been to Morris Harvey (here), 95-86, W.Va. Tech 69-60, Morris Harvey (there), 82-86 and W.Va. State 93-64.

Morris Harvey Here
Glenville State College basketball fans had a brief taste of victory for 20 minutes Tuesday, Jan. 8; however, the taste turned sour as Morris Harvey battled back from a 54-44 half-time deficit and won over the Pioneers 95-86.

The game started off in a seaway shooting battle between Mike Eberbaugh and Dick O'Neal. Morris Harvey pulled away slightly after five minutes of the first half had elapsed.

Coach Byrd signaled for a time out and quickly gave instructions to press the opposition. The zone press proved to be instrumental as Morris Harvey relinquished its lead. The Pioneers quickly tied the score and with seven minutes remaining in the half, Glenville started to build on its half-time advantage of 54-44.

Dick Bickel made four baskets in five attempts to help spark the Pioneers in this rally.

As the second half buzzer sounded, the "Golden Eagles" were determined to close the ten-point gap that separated them from Glenville.

Morris Harvey stole the ball on numerous occasions and caused the Pioneers to give up the ten-point margin. With 14:38 showing on the clock, Morris Harvey tied the score 55-55.

In this five-minute period, the Pioneers managed to throw away

ten bad passes, receive two traveling violations and get the ball stolen four times. Also, the Pioneers failed to hit with a field goal and only managed to get one point in five minutes.

Eberbaugh finally connected with 14:20 showing on the clock and gave the Pioneers their first field goal in the second half.

With 10:12 showing on the score board clock, Morris Harvey was ahead 65-64. The game never got any closer as Morris Harvey widened the gap.

The Pioneers were desperately trying to stay in the game, but desperation finally gave away to fouls and this eventually led to the dismissal of three Glenville players for having five personals each.

Morris Harvey coasted from that point of 10:12 and won the contest 95-86.

Clyde Brewer had a tremendous amount of determination when he entered the game late in the second half. This determination slightly sparked the Pioneers; however, his spark failed to ignite the squad completely, and they fizzled out.

Mike Eberbaugh and Larry Gainer led the Pioneers in scoring with 21 and 15 points respectively.

Morris Harvey's Jerry Moore had 31 points to lead the games scorers. In the preliminary, Morris Harvey's freshmen defeated the Glenville State freshmen 68-61. Ed Bell led the freshman in scoring with 12 points.

W.Va. Tech Here
Dec. 18 was a big day for Glenville College students. This was the day before the Christmas recess began and the day that Glenville State hosted W.Va. Tech.

Game time approached and the field house was near capacity with

enthusiastic basketball fans; the fans were ready for Coach Neil Baisi's hoopsters.

As the buzzer sounded and the game progressed, both teams battled on nearly even ground throughout the first half with the score being tied five times and changing hands on seven occasions. The Pioneers, however, pulled away to lead just before the half-time buzzer.

The spectators went wild and could not believe that the Pioneers were beating the so highly publicized, and the currently undefeated "Golden Bears" from Montgomery.

The second half proved to be interesting as both teams played brilliantly but in the last two minutes of the game, the Pioneers went cold and Tech moved ahead to win 69-60.

Chuck Eddy had his best night for the Pioneers this season by pumping in 16 points to lead Glenville's scoring.

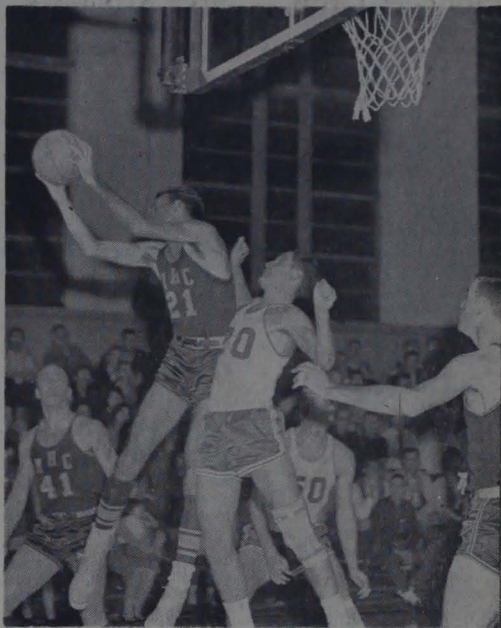
Eberbaugh and Bill Maxwell had 12 and 11 points respectively. Tech's Carl Pennington led the game scorers with 34 points.

D and E Here
On Dec. 11, Glenville fans and players got an early Christmas present as the determined Pioneers opened the home season by swamping D&E 97-73.

The Pioneers zoomed out to a fast lead and expanded their margin as the game progressed.

Coach Byrd substituted freely in the second half to give the young- (Continued on Page 4)

PIONEERS IN ACTION



Concord Wins Matmen Fall; Beckley Tourney Falcons Victor

The Pioneers resumed action after a two-week Christmas vacation and traveled south to the Beckley Invitational Tournament on Jan. 4 and 5.

While winning the first game in Beckley, against Beckley College 95-94, which was won by Larry Gainer's two successful free throws with 34 seconds remaining, the Pioneers were listless. Coach Byrd's team was trying to hold something back for the final against Concord. It is well it did.

Coach Byrd's intruders from central West Virginia outshot and outbounded Concord. It was only through surer ball handling, passing and defense that Concord got Glenville to fritter away a seven point half-time advantage.

The Glenville players were weary after two hard days of rough, tough basketball and lost the championship game in the last five minutes 65-60. Mike Eberbaugh led all scorers with 25 points.

In Friday night's contest, freshman Larry Gainer shot his season high of 19 points against Beckley. Eberbaugh again led the scorers with 26 points.

MAA Tournament Won By Richwood

Richwood remained undefeated and won the MAA volleyball tournament Thursday, Jan. 3, by defeating the Big "Six."

Members of the winning team were Gary Blake, Mike Blake, John Husk, Butch Vannoy, Joe Hanna, and Bill Bobbett.

MAA basketball tournament started Friday, Jan. 4, with the Barecats, Stumpjumper, Sharks, Ten High, Losers and Richwood winning in the first round.

Some 18,000,000 school children across the world get a daily CARE lunch or glass of milk.

Former Coach Receives Honor

ALVON FORTUNATUS (Nate) ROHRBOUGH, former, famed GSC coach, has been voted the newest member to the West Virginia Sports Hall of Fame by the W. Va. Sports Writers Association.

Mr. Rohrbough polled 26 votes on 37 ballots to become the 21st man elected since its founding in 1950.

He ran ahead of Clair Bee, former Long Island University basketball coach; Marshall (Biggy) Goldberg, Pitt's most famous football player; the late William Fugitt, high school athletic administrator; and Edward Kirk, ex-Morris Harvey coach.

In the 17 years Mr. Rohrbough was at the GSC helm, his football teams won 65 games, lost 25, and tied 13, a winning percentage of .700.

His basketball teams compiled phenomenal records during the "Golden Reign." His teams won 304 and lost only 58, an incredible .839 winning percentage.

From Feb. 1, 1937, to Feb. 13, 1940, Rohrbough — coached hardwood teams completely dominated the conference, compiling a record of 64 consecutive league victories.

At present, contributions are being taken to raise \$340 to erect a plaque in his honor in the Hall of Fame. Names of contributors, but not amount contributed, will be presented to Mr. Rohrbough.

Mr. Rohrbough married the former Miss Phyllis Davis, who once taught music at GSC. They have one son, John, a graduate of the U. S. Naval Academy, now married and doing special Navy schooling in California.

BASEBALL PRACTICE STARTS

With winter less than a month old, the talk of the coming baseball season has recently been the center of discussion.

Glenville's new baseball Coach, Mr. William Douglas, is requesting that all pitchers and catchers please report to the Health building at 3 p.m. Mon., Jan. 21, for equipment issue.

WE THANK YOU

On a campus where more emphasis is given to damning than to praising, it gives one a good feeling to recognize particular student effort.

The Christmas band concert featured an outstanding performance by Steve Fulmer on the timpani drums. It was a stirring performance which stood out in an excellent concert.

Four women, Mary Jo Nocida, Patty Dent, Rita Patterson and Francis Nocida, representing the college in a cheerleading capacity, have turned what, in most other colleges, is a rather drab and lifeless exhibition of jumping and arm-throwing, into a performance which is truly worthy of merit. Utilizing an entertaining combination of ingenuity, gymnastics, and acrobatics, these four have led the cheering section through wins and losses with equal fervor.

We recognize these students for the light they produce in an otherwise dimly lit stage.

—Larry Wolfe

GLENVILLE MIDLAND

462-7141

CLOTHING

For the Young and the Old. Come See. Moderate Prices

The

Dalton Store

Best of Luck Pioneers!

Kanawha Union Bank

GLENVILLE, W. VA.

OVER FIFTY YEARS OF SERVICE

To GILMER COUNTY

Member of Federal Deposit Insurance Company

For haircuts and flattops visit

Bantz's Barber

Shop

Doc Layfield — Bantz Collins

Visit us soon for your everyday needs.

At

The Ben Franklin

Modern Dry Cleaners

N. Court Street

Fast Efficient Work

Patrick Reale

Fruits, Vegetables
Meat Products and
Foods for All
Occasions

R. B. STORE

Cards for All Occasions.
Cosmetics for the Ladies.
Quality Fountain Service
For All. Stop and Shop.

The

G & D STORE

Pioneers Drop

(Continued from page 3)

er players some experience. Larry Gainer and Clark Dilley led the freshmen in scoring with nine and six points respectively.

Glenville shot an amazing 50% for the evening connecting on 41 shots for 82 attempts.

Mike Eberbaugh led the scoring with 26 points. Eberbaugh shot 11 for 19 for 57%.

Mike Reed hit seven goals for ten attempts for 70% and 15 points.

The best shooting percentage of the game went to 6' 6" Dick Bickel, who shot 85%. Bickel shot seven times and hit with six for 13 points.

Morris Harvey There

The Pioneers proudly and anxiously walked into Morris Harvey's field house on Dec. 8 with the fighting determination of a bunch of wild cats. This game completed the two-day trip to the southlands of West Virginia and what a game it was!

A word of mentioning to the typical non-newspaper reader of Glenville State College before describing the game. Morris Harvey completely humiliated Marshall University the previous week by dumping them 76-72 at Huntington.

In a hard-fought game, the "Golden Eagles" tripped Glenville in the final seconds 92-86. Morris Harvey moved ahead of the Pioneers, then trailed briefly before adding their winning points.

Morris Harvey led only by five points at half-time 42-37. Midway in the second half, the G-Men tied the score and slowly moved away 55-51. At this point, Morris Harvey fans, players and coach Sonny Moran were in hysterics. However, as play continued the "Golden Eagles" managed to steal the ball on numerous occasions and finally edged the Pioneers.

Mike Eberbaugh probably played his finest role as a Glenville player by contributing 30 points and 13 rebounds. Dick O'Neil added 27 points for Morris Harvey.

W.Va. State There

As Santa Claus was preparing for the big day, the G-Men were equally busy playing basketball. On their first trip south Dec. 7, the Pioneers fell before a strong aggregation from W.Va. State 93-64.

State dominated the game completely with their tremendous rebounding strength and the accurate shooting of Bill LeFevre. LeFevre led the scoring with 36 points.

Mike Eberbaugh, who was averaging 29 points each game prior to the State game, managed to get only ten points against the Yellow Jackets.

Bill Maxwell and Chuck Eddy led the Pioneers in scoring with 13 and 12 points respectively.

FOREIGN FILMS

(Continued from page one)

The new series which would begin in February is open to students, faculty, and town people. The films are shown in the Louis Bennett Lounge on Mondays at 3:30 and 8 p.m.

The foreign film series has been highly successful during the first semester. Membership was over one hundred and the films have been well received.

Colleen's Beauty Shoppe
Phone 462-7971
Lewis Street

PARSONS' JEWELRY
Glenville and Grantsville
All Work Guaranteed
Watch and Jewelry Repairing
Bulova and Elgin Watches
Latest Recorded Hits
Hallmark Cards
Appliances

SNEA Names Vice President

Student NEA held its regular meeting Thursday, Jan. 10. President Judy Weese presided for the last time. Miss Weese, who will begin directed teacher next semester, was replaced by Sandra Wamsley, vice president.

A new vice president was appointed by the officers and the sponsors of the organization.

Peggy Hypes, sophomore elementary education student is the new vice president. Other officers include Cheryl Fisher, secretary; Joyce Hartley, librarian; and Bob Smith, historian.

Sandra Wamsley was in charge of the program, "Looking Forward to New Horizons."

Dean Somerville suggested that the Student NEA plan programs to present at high school FTA organizations in the area.

PAINTING ON DISPLAY

The Oil Painting class has four oil paintings on display on second floor of the Administration Building.

Two of the paintings were done by Judith Mattson, art student from Weston. One of the paintings is still life with wine and an apple; the other is an artist conception of the library.

Jim Reedy has a painting of abstract figures on display and Dave McDonald painting is a view from Firestone Lodge.

For an example of what GSC art students are doing, go look at the paintings.

ARTIST MOLDROSKI

(Continued from page 2)

A.—It is done in sheet copper, formed and brazed where needed and has a patina of copper oxidation that results in a blue-green color.

Q.—What will become of the winning works?

A.—The winning painting and sculpture will be a part of the Centennial Train which will tour each county of West Virginia as well as the capitals of the surrounding states. They will also be exhibited in the West Virginia exhibition at the 1964 New York World Fair.

Mr. Moldroski is also participating in a small group exhibition which opens at the Huntington Gallery on Dec. 29. He was awarded this exhibition last year on the basis of his work in Exhibition 180, an annual show at the Huntington Gallery. The picture of his painting will appear in the Jan. 16 MERCURY.

Rogers Will Graduate

Walter Kirk Rogers' name was inadvertently omitted from the list of students named in an earlier issue of the Mercury, who will graduate at the end of the second term. Rogers will complete requirements for a BS degree in chemistry and mathematics Jan. 18 according to an announcement from Dr. Somerville's office.

Doris Williams, a November graduate of GSC, is teaching at Oakland, Md.

Corsages and flowers for all occasions at
Minnich Florist

Glenville's only drug store
Your necessities available at
SUMMERS' PHARMACY

CAMPUS CALENDAR

JANUARY

- 16 Wrestling Match GSC vs Marshall University Gym 8 p.m.
- 18 Semester Ends
- 19 West Liberty vs. GSC at Glenville
- 21 Foreign Film Louis Bennett Lounge 3:30-5:30 and 8-9 p.m.
- 22 Salem vs. GSC at Glenville
- 25 Concord vs. GSC at Glenville
- 28 Alderson Broaddus vs. GSC at Glenville
- 29 Foreign Film Louis Bennett Lounge 3:30-5:30 and 7-9 p.m.
- 31 Wrestling Match—GSC vs. Fairmont at Glenville

Basketball—Fairmont vs. GSC at Glenville

FEBRUARY

- 4 Faculty Meeting 3:30
- 5 W.Va. State vs. GSC at Glenville

COLLEGE LIBRARY

(Continued from page 2)

Construction began in the fall of 1929, and at that time it was expected that the building would be completed by the opening of the fall semester of 1930. However, work progressed slowly and Senator Kidd died on June 8, 1930, before the completion of the Library that bears his name.

Finally, on April 2, 1931, without ceremony or dedication, the Robert F. Kidd Library opened its doors to the students and citizens of Glenville.

Libraries have a way of growing with the times and the Robert F. Kidd Library is no exception.

At the present time the Library subscribes to 204 periodicals, many newspapers including "The Congressional Record," "The N.Y. Times," "The Christian Science Monitor," "The Washington Post," "The Hillbilly" and papers from Charleston, Parkersburg, Wheeling, Clarksburg and several county papers.

The N.Y. Times is available on microfilm since 1939. Anyone with the aid of a student assistant may use the microfilm reader in the W.Va. Room located on the third floor.

All books may be checked out for two weeks and then renewed, with the exception of books on the reserve shelf, which may go out overnight and special reference books, which must be used in the Library. In addition, the Library houses a record collection and a film strip series (Current Affairs from The N.Y. Times) which may also be checked out for two week periods.

The Library belongs to the Book of the Month Club and has acquired many of the recent best-sellers. Among these are "Blue Nile," "A Morehead;" "Silent Spring," Rachel Carson; and "Travels with Charlie," John Steinbeck. Other new books include "Movies in Society," Mark Koening; "President James Buchanan," Philip Klein; "Fires of Autumn," Helen Howe; and "Americans Music," Gilbert Chase.

The education department has ordered the entire 75-volume Library of Education and the Library has recently acquired the 12-volume "Interpreters Bible" and the "Interpreters Dictionary" that accompanies it.

Few people realize what a real luxury a library is. Why not use OUR Library?

Perhaps the late Frank Demster Sherman in "The Library" stated it more simply:

... Such be the library; and take This motto of a Latin make To grace the door through which I pass Hic habitat Felicitas.

GSC SORORITY
(Continued from page 1)
of new hearing centers.
Theta Xi Chapter is the 150th chapter of Delta Zeta.
Mrs. William Douglas and Mrs.

Good Home Style Cooking, Friendly atmosphere. Visit Us Soon at the—
Conrad Restaurant

Newman Club, Wesley Group Schedule Coming Activities

Two church youth groups, Wesley Foundation and Newman Club, have released their plans for the immediate future.

Newman Club

At a meeting Wednesday, Jan. 9 the Newman Club discussed a proposed program for the second semester.

In the educational division, tentative plans for a lecture series were discussed. The series would include five lectures by two priests, a doctor, psychiatrist and a lawyer or judge. Subjects would be sex, Church and marriage. Also included in the educational program, a class for people, regardless of Faith, to teach proper attitudes and actions toward non-Catholics.

As its religious project the Newman Club will make a Novena for the beatification of John Henry Newman. There will be a talk and benediction half an hour before every other meeting, and the Club will sit together at Sunday Mass.

Special plans for the Club are to lunch together once a month on Sunday in the Colonial Room and to have a party for the opening of Student Center. Coffee time will follow most meetings.

Other proposed projects discussed were to bring the W.Va. Regional Convention to Glenville, to show officers and to sponsor a dance.

Officers of the Newman Club are John Albright, acting president; Marilyn Jurasko, secretary and Mary Jo Nocida, treasurer. Father Raymond is chaplain and Mr. Clayton Hallett is adviser.

Wesley Foundation

On Sunday, Jan. 13, at 6:30 p.m. the Wesley Foundation began a series of introductory sessions, "Religious Values in the Contemporary Arts." These sessions will span a two-month period and will be held every Sunday evening at that time. There will be no meeting on the Sunday between semesters. The series will include discussions on drama, music, literature, poetry, interpretive dancing and art.

As an experiment, the Wesley Foundation will have its monthly meetings on Thursdays at 7 p.m. at the Foundation building instead of Sundays because so many students go home for the weekends.

Plans for these meetings include visits from prominent Methodist ministers in the area speaking on subjects of interest to college students.

Tentatively scheduled for Jan. 24 is Dr. Lacy Burns, District Superintendent of the Charleston District Methodist Churches, and a former instructor at Morris Harvey College. His subject will be "Is Religion Necessary?"

A social hour will follow the meetings.

Librarian Interviewed

Mr. Dale E. Shaffer, Salem, Ohio, was on campus Jan. 5 for an interview for the position of GSC librarian. It is probable that he will become a member of the faculty.

Mr. Shaffer received a BS degree in business administration and an MA degree in library science from Kent State University.

For the best in Hairstyling VISIT
Gene's Barber Shop
Gene Ellyson, Jimmy Fitzwater

The store for clothes you want and the prices too, at
HOWES' DEPT. STORE

Keepsake Diamonds, Hamilton, Elgin, Bulova Gifts for all occasions.
Watch Repair and Jewelry
All Work Guaranteed
HAMRIC'S Jewelry Store
Box 476 107 East Main
Glenville, W. Va.