

The Glenville Mercury

Vol. XXXVII. No. 5

Glenville State College, Glenville, W. Va.

Wednesday, December 8, 1965



Dr. D. Banks Wilburn, president of Glenville State College, officially cuts the ribbon at the dedication of Louis Bennett Hall. (MER-photo by Hodges)

Louis Bennett Hall Holds Ribbon-Cutting Ceremony

Louis Bennett Hall has expanded greatly since its opening in 1938. The following is a description of the dormitory written by the *Mercury* staff of 1938 prior to the official opening of the old structure:

"The huge structure, modern to the last word in dormitories, will provide rooming facilities for 132 boys, and three apartments for instructors who will act as preceptors. Teachers who will reside in these apartments have not been selected yet, the President stated, but will be named before the dormitory is opened for use.

"The spacious, well-equipped reception hall on the ground floor of sections C, D, and E will be used as a general recreation room. All organizations of the college will be free to use it for meetings, parties, and dances. A radio, divans, wall decorations, and lamps are included in the beautifully constructed hall. A small kitchenette opens off the main room for use in preparing refreshments for special gatherings.

"The students' rooms, all completed and each one furnished with venetian blinds, two beds, a combination study and library table, reading lamps, two large wardrobes, a chest of drawers, and chairs, made GSC proud of the new men's dormitory."

Today, GSC has still more to be proud of than in 1938. The new lounge is done in orange and yellow. The bright yellow carpet and the modern furniture are accented by the green artificial plants standing near the highly finished woodwork. An elevator transports the resident to the floor of his room. Rooms designed in pastel green with dark walnut-toned

furniture houses two men. Each man has his own desk with matching chair. Two men share a spacious closet and a large bookshelf. The new dormitory houses 325 men in comfort.

Ceremonies for the official opening of the new Louis Bennett Hall took place on Nov. 20. Dedication speeches were given in the auditorium followed by the ribbon cutting. Mr. H. K. Bear, Secretary of the Board of Education, Dr. D. Banks Wilburn, president of GSC, and Sam White, Louis Bennett Hall president, officially opened the men's dormitory.

Mrs. Lula Fittro, the house mother, was the hostess for the reception. She greeted the guests who came to see the new building. The reception was followed by an open house with tours through the dormitory.

'College Life'

Danny McIntyre, freshman living on third floor of Louis Bennett, is now taking subscriptions for the new magazine, *College Life*.

College Life contains stories on education, fashions, world events, and reviews on books and films. Every month a college or university from across the nation is featured.

Subscriptions for the monthly publications of *College Life* may be obtained from McIntyre for \$3 for one year, \$5 for two years, \$7 for three years, and \$9 for four years. The magazine has not yet been put on the news stands for single copy sales.

Symphonic Chorus, Choir Will Perform

This Sunday, December 12, at 7:30 p.m., the Glenville State College Choir and Symphonic Chorus will present the Annual Christmas Concert under the direction of Mr. Robert Ellis.

Beginning today, Wednesday, December 8, tickets for the Concert may be obtained by presenting activity cards at the office of Student Affairs. Friday, December 10, will be the last day that students may obtain concert tickets.

Any other people wishing tickets may obtain them by writing "Tickets, Music Department, Glenville State College, Glenville, W. Va." and they will receive free tickets. They may also obtain tickets by stopping in the office of Student Affairs.

First on the Concert program will be the GSC Choir presenting Christmas carols from different regions. Included in this part of the program will be: "I Wonder as I Wander," an Appalachian carol; "Ave Maria," a South American carol; "Coventry Carol," an English carol; "Greensleeves," an English carol; "Mary Had a Baby," a Negro spiritual; and "Carol of the Drums," an American carol.

Twenty-nine voices make up the Choir which is a touring group. On Tuesday, December 14, they will be performing at high schools in Weston and Clarksburg.

Following the Choir's portion of the Concert, the Glenville State College Symphonic Chorus will give a presentation of George Frederick Handel's most famous oratorio, *The Messiah*. Sixty members make up the Symphonic Chorus which includes the voices from the Choir as well as other voices.

Guest soloists for *The Messiah* are: Miss Diane Davis, a recent Glenville graduate now teaching at Weston, who will sing the mezzo-soprano part. John Sandor, a music student from West Virginia university will sing the tenor solo. The bass solo will be sung by

Richard Coffman of Morgantown. Coffman is a graduate of Peabody Conservatory of Music.

Following the presentation of (Continued on page 2)

Grand Prytanis Visits TKE Meet

On Monday, Nov. 29, the Grand Prytanis of Tau Kappa Epsilon visited the Glenville Chapter of Tau Kappa Epsilon at their weekly meeting. Mr. Salisbury, the Grand Prytanis, is from California. He is making stops at all the West Virginia campuses, that have TKE chapters, on his way to Washington, D. C.

Mr. Salisbury traveled from Marshall University Chapter of Beta Nu on Sunday, Nov. 28, to Glenville and was continuing on his journey to Washington, D. C., through Fairmont's Theta Delta Chapter and on to Concord's Chapter of TKE.

In Washington Mr. Salisbury will attend the meeting of the International Interfraternity Council.

During his stay in Glenville, Salisbury spoke to the TKE active members and pledges on the meaning of Tau Kappa Epsilon and the values it stands for. He stated that TKE stands for "men" and that they should support President Johnson's policy in Viet Nam in this hour of crisis. Salisbury further stated that now is the time for TKE's and all college students to stand behind the country's representatives and to uphold the standards of democracy.

The national headquarters of Tau Kappa Epsilon is in Indianapolis, Indiana.

'Drunkard' Is Next Production

A moral domestic drama in five acts will be the next play which will be presented by the GSC Theta Alpha Cast of Alpha Psi Omega and the Ohningohow Players. *The Drunkard*, or *The Fallen Saved* is a melodrama adapted by William H. Smith.

Tryouts for the production will be December 13, 14, and 15 at 3:30 in the auditorium. There are four major roles for women to be cast, and four major men's roles, as well as both male and female extras.

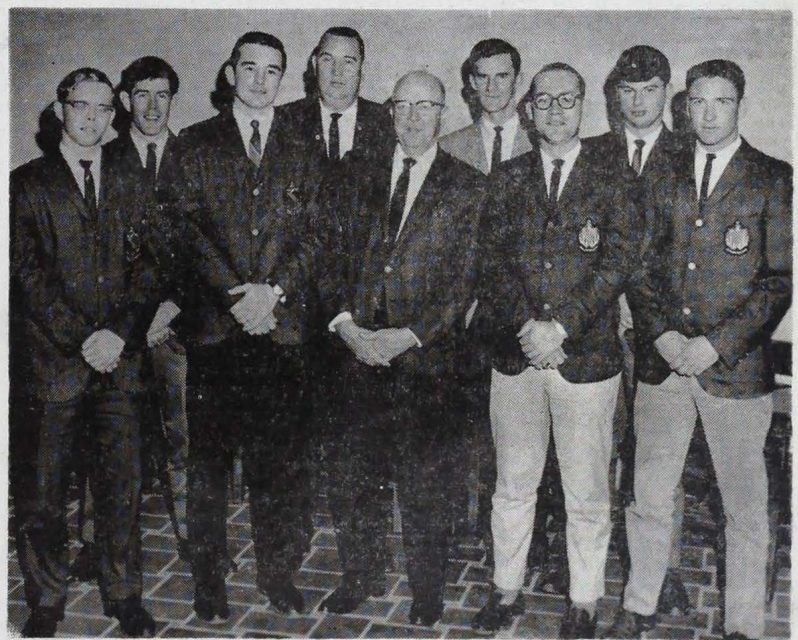
Mr. J. Rodney Busch, director of the play, says that *The Drunkard* will be presented in the traditional nineteenth century melodramatic style using grand gestures and eloquent language.

The story concerns a poor heroine who is being run out of her home by the landlord, the villain. Her husband becomes a drunkard, her mother dies, and she ends up living in a wretched garret, sewing on "slop work," living in want and poverty. However, true to melodramatic tradition, all ends well.

"Many inquiries have been made as to the authorship of *The Drunkard* and rumor has named a dozen or more persons, some of whom have never troubled themselves to deny their identity in regard to connection with the subject," says Mr. Smith in his author's preface. The manuscript was placed in the hands of Mr. Smith with the request that he would finish and prepare it for the stage.

"The piece was produced under direction of Mr. Smith, in the winter of 1844, and performed that season for upwards of one hundred and forty times. 'This is by all acknowledged to be the most successful play ever banned in Boston.'"

The Drunkard, scheduled for presentation on February 10, 11, and 14, is still running, as it has been for a number of years, nightly in California.



The Grand Prytanis of Tau Kappa Epsilon. From left to right they are Mike Mason; Robert Hays; Bill Meade; D. Gene Ballard, Province Supervisor; J. Russel Salisbury, National President; L. Smith, chapter advisor; Robert Hersey; Page Shanklin, and Ben Henry. (MER-photo by Hodges)



Alpha Sigma Alpha pledges are: Patty Deal, Carol Hauman, Ann Lorentz Murphy, Jackie Pitts, Ginger Sinnett, Pam Gilmore, Grace Nocida, Becky Stalnaker, Jo Ann Rogers, Diane Cochran, Joanne Gray, Becky Stephens, Ann Gruesser, Carolyn Hudkins, Celeste White, and Diane Fankhauser. (MER-photo by Dougherty)

ASA Pledges Have Christmas Action

Alpha Sigma Alpha held two pledge parties for their sixteen pledges. The theme of the informal party was "Island in the Sea." Queen of ASA entertained her guests (the rushes) while her slaves (the active members) served refreshments and provided the entertainment for the party.

The theme of the formal party was "Moon-lit Gardens." After the rushes left the party, Mrs. Deal, advisor, proposed a toast to Alpha Sigma Alpha.

ASA pledges elected for their officers: president, Gracie Nocida; secretary, Carolyn Hudkins; treasurer, Pam Gilmore.

Pledge activities for Alpha Sig-

ma Alpha pledges include: a Christmas basket for a needy family that is suggested by the welfare department; the pledges are to help the active members with a Christmas party for the adopted boys at St. Mary's.

Some of the tasks an Alpha Sig pledge has to perform are: open doors for active members, attend breakfast Monday through Friday, attend all pledge meetings, wear pledge pins at all times, address all active members as "Miss," check with their Big Sisters once a week, dress up every Monday, and make a star with all of the actives' signatures on it.

Each pledge is also to plan a coke date with her Big Sis in order to acquaint the girls with their Big Sister.

ASA is planning to buy sailor hats and books for their adopted boys at St. Mary's Children's Home.

Mrs. D. Banks Wilburn held a party at her home on Nov. 22 in honor of the new pledges.

Alpha Sigma Alpha pledges are: Patty Deal, Carol Hauman, Ann Lorentz Murphy, Jackie Pitts, Ginger Sinnett, Pam Gilmore, Grace Nocida, Becky Stalnaker, Jo Ann Rogers, Diane Cochran, Joanne Gray, Becky Stephens, Ann Gruesser, Carolyn Hudkins, Celeste White, Diane Fankhauser.

Firestone Lodge Dorm for Women

Firestone Lodge, apartment building owned by GSC, has recently been converted into a dormitory for women due to the crowded conditions in the dormitories. Six women are currently living in Firestone under the same rules, regulations, and restrictions that are enforced in Verona Maple and Women's Hall.

The Lodge is announcing its first open house to be held on Sunday, Dec. 12, from 2:00-4:00 p.m. The entire upstairs will be open and decorated for interested public to come view. This includes the girls' apartment and Dean Higginbotham's apartment.

The theme for open house is "Santa's Workshop."

Ohningohow Players Hold Initiation Nov. 29

Twelve pledges were recently initiated into Ohningohow Players in a formal candle-light ceremony in the lounge of Louis Bennett Hall. Bill Monk, president of Ohningohow, presided over the initiation ceremony.

Active members participating in the installation were Sally Nelson, Thom Hodges, Shirley Dougherty, Mr. Jim White, Harold Dougherty, Sandra Monroe, Bill Monk, Judy Bishop, Eugene Nesbitt, Mr. J. Rodney Busch, Jerry Stover, Judith Musgrave, Dock Hinkle, Dick Dawson, and Randy Dotson.

New members initiated were Ed Beary, Joe Badgley, Jo Bean, Miss Ann Rodney Lorentz, Ellen Wamsley, Karen Gruesser, David Lough, Larry Hall, Dave Bennett, Jim Meads, Gary Farnsworth, and Catherine Riley.

Room Space Going Fast

No space is available in either of the women's dormitories at GSC for the 1966-67 school year, Mrs. Ruby Higginbotham, Dean of Women, reported last week. More than 400 reservations have been accepted, and each room has three occupants.

Upperclassmen were to make their room reservations before Dec. 1, and after that date, reservations would be accepted from prospective freshmen. By Dec. 1, more than 300 upperclassmen had reserved rooms, and more than 100 freshmen reservations were accepted that day.

This left only 25 single spaces to be filled after the first day of accepting freshmen reservations. These spaces were soon filled, and the waiting list is growing constantly. Some women may live off campus, but the approved locations are few, indeed.

Construction of two new stories of Women's Hall was begun recently, but the addition will not be completed in time to relieve the problem. It is hoped that the fifth and sixth floors will be finished by the beginning of second semester of the 1966-67 school year.

The situation for men is less critical, for at last report there were still some spaces available in Louis Bennett Hall. Also, more off-campus housing is available for men.

ARISTOPHANES' PLAYS DISCUSSED

Three plays of Aristophanes, the Greek dramatist, were discussed at the Nov. 21 meeting of the GSC Literary Society.

Linda Bush, who was in charge of the program, gave a brief biographical sketch of Aristophanes. Then she discussed his play, *Lysistrata*.

The *Birds*, another of the author's dramas was explained by Nila Rollins, and Patricia Morrisson discussed *The Clouds*.

Carson McCullers' first novel, *The Heart is a Lonely Hunter*, will be discussed at the next meeting, on Sunday, Dec. 12, at 3:30 p.m. This book, which tells of "a quiet, intensely personal search for beauty" among the Georgia mill towns and plantations, is available in the bookstore for 75c.

SYMPHONIC CHORUS

(Continued from Page 1)
The Messiah, an open formal reception will be held in honor of the three Concert soloists. The reception, to be held in the Ball Room of the Pioneer Center, will be sponsored by the local student chapter of the Music Educator's National Conference. Delta Zeta Sorority will serve at the reception and will also be ushers at the Concert.

On Wednesday, December 15, the Music Department will pre-

DZ'S INITIATE 14 MEMBERS

Theta Xi Chapter of Delta Zeta Sorority at this time is conducting pledge period for fourteen DZ pledges. The pledges were taken in last week following a week of rush.

Delta Zeta Pledges for this term are: Karen Bailey, Parkersburg; Janet Barclay, St. Mary's; Debbie Dietz, Pittsburgh; Alice Dolin, Madison; Gloria Halbert, Parkersburg; Becky James, Pennsboro; Patty Kincaid, Swiss; Carolyn Lightner; Charleston; Janet Lantz, Parkersburg; Linda Walker, Summersville; Shirley McIntyre, Ripley; Kathy Stroup, Richwood; Sheryl Nichols, Pennsboro.

Monday, Nov. 22, pledges were given ribbons made of the sorority colors, pink and green, in a short ribbon ceremony.

Anne Smith, freshman from Parkersburg, was elected president of her pledge class at the first pledge meeting held Monday, Nov. 29. Other officers elected to serve with Anne are: vice-president, Karen Bailey; secretary, Becky James; treasurer, Patty Kincaid; and song leader, Shirley McIntyre.

Thursday, Dec. 2, Delta Zeta activities and pledges ate dinner together in the Colonial Room. Following dinner, formal pledging ceremonies were held.

Further sorority activities in the planning stages are a Christmas party, Christmas caroling, and a dance.

Women's Dorm Has Open House

Women's Hall will have its annual Christmas open house from 2:00-4:00 p.m. on Sunday, Dec. 12. Each of the floors will be decorated in a different theme and the girls will decorate their doors in accordance with the theme.

A prize is awarded to the floor where the girls have shown the most imagination and a prize will also go to the best "door." Last year, first floor won a five pound box of candy for presenting the best floor. Their theme was "Deck the Halls." Patty Gray and Sandy Salyers won first place for having the best door and Sheryl Bode and Kay Cobb placed second for their door.

Students, families, and faculty are urged to come and view the decorations created by the girls.

On Monday, Dec. 13, Women's Hall will go caroling over the GSC campus. Wednesday, Dec. 15 is set for Women's Hall Christmas Party for the girls.

sent a campus-wide Christmas Assembly in the auditorium. Both the Choir and the Brass Ensemble will perform in the assembly. Dr. D. Banks Wilburn will read the Christmas scripture. Classes will be excused at 10:00 for this assembly.



Cheryl Lee and Dianna Shinn perform at Alpha Sigma Alpha formal rush party. (MER-photo by Hodges)

THE GLENVILLE MERCURY

The Student Newspaper
Glenville State College
Telephone Ext. 39

Entered as second class matter November 23, 1929, at the post office at Glenville, W. Va., under the act of March 3, 1879. Published every other Wednesday during the academic year except on holidays.

STAFF

Editor	Judith Musgrave
Sports Editor	Robert Marshall
Photographer	Harold Dougherty
Page 2 Editor	Sherel Lawson
Page 3 Editor	Dennis Myers
Page 4 Editor	Barbara Davis
Typist	Sharon Campbell
Reporters:	Bill Casto, Joyce Edens, Janet Green, Patricia Hall, Sandy Salyers, and Randy Wiseman.
Adviser	Thomas A. Larson

Engravings by Howard Hiner
Mountain State Photo Service, Buckhannon
Printed by the Republican-Delta, Buckhannon

Pioneers Cop Honors In Shrine Tournament

By BOB MARSHALL

G.S.C. Pioneers unofficially started their 1965-66 season with the annual Tournament sponsored by the Lewis County Shrine Club. The four participating schools in order of their final standings were, Glenville, Fairmont State, West Virginia Wesleyan, and Salem College.

On Monday, Nov. 22, the tournament got underway with Glenville sharing the floor with West Virginia Wesleyan in what proved to be the tightest game of the tournament. Glenville took its first lead of 14 to 13 with 12:34 left in the first half and held the lead till the half-time buzzer sounded with the score 39 to 38 in favor of Glenville.

The lead in the second half changed hands many times and the final score was Glenville 77 and Wesleyan 74. Coach Byrd of the Pioneers made many substitutions in the game and proved that Glenville had a good reliable bench aiding tremendously throughout the game.

SECOND GAME

The second game for the Pioneers came on Tuesday, Nov. 23, against Fairmont State, who gained the title game by defeating Salem in the previous night's action. The lead changed hands only once during the first half with Glenville out in front most of the time. The score at half-time was 41 to 41.

Glenville came back strong in the second half to gain the lead for good. The Pioneers showed a good all-around team many times, while at one time they ran the score up 30 points above their opponents. The final score was 105 for Glenville and 75 for last year's victors, Fairmont.

Scoring for the Pioneers was not dominated by any one player. The G.S.C. Wave had four men in double figures and many close to them. Carlton Spicer led the scoring with a strong second-half resulting in a total of 18 points.

Bob "Skinny" Minnieweather played his usual excellent game of rebounding and offensive play with 17, and Jim Archer also showed excellent ability in contributing 17 points. Close behind was Jim Canary with 10, Paul

Layne with 9, Donald Treadway and John Bell with 8 points each. Ed Johnson and Steve Spicer spread the nets for 7 points and Ralph Dunkle, playing a fine game, hit for 4 points.

While the more experienced men played their usual fine game they were continually backed by a bench of excellent freshmen who showed real talent for the hardwood sport.

The team's captains received their respective awards with Bob Minnieweather, the captain of the Pioneers, receiving the first place trophy for Glenville. Glenville also paced two players on the all-tournament team. Bob Minnieweather and Carlton Spicer received the honors and equally well deserved them.

Faculty Downs G-Club In Play

Among the recent athletic events on campus was the rugged Faculty versus G-Club basketball game. This game is held each year to help raise funds for the filming of the football games.

This year the Faculty had quite a bevy of shooting Aces, including: "Big Beryl" Langford, "Hot Rod" Hardway, "Dead Eye" Douglas, "Lay-up" Loebner, "Tiger" Lilly, "Make It" Murin, and "Slice Away" Smith.

One of the better coaches on hand was Dr. Wilburn who planned the strategy for the victorious faculty team.

The faculty jumped to a quick lead and, by using eight players at a time, managed a respectable 26-21 half-time lead. The second half saw the faculty team increasing their lead enough to win by a 41-39 margin.

Several of the faculty seemed to enjoy the time outs when every one took a drink—of water!

All of the students were put in a cheering mood by the faculty cheerleaders under the direction of Dean Higginbotham. The faculty players were quite proud of their victory but felt a little sore about it the next day.



The 1965-66 G.S.C. Basketball Team: Bob Hammel, Jim Archer, Eddie Johnston, Jerry Wolfe, Steve Spicer, Bob Minnieweather, Carlton Spicer, Gary Blake; standing: Terry Butcher, Ron Sloan, Jim Canary, Paul Lane, Ed Lipscomb, John Bell, Terry Dyer, Ralph Dunkle, Robert Groves, Don Treadway. (MER-photo by Dougherty)

Pioneers Open Season With Hardwood Thriller

By BOB MARSHALL

Wednesday evening, December 1, the Glenville State College Pioneers began their regular season play against the Marietta College Pioneers. The game was played at Glenville before a near capacity crowd.

Coach Byrd started the game with Carlton Spicer and Ralph Dunkle at the forward positions, while Ed Johnston and Steve Spicer filled the guard positions, and Bob Minnieweather rounded out the top five at center.

The first half play was mostly a defensive game with neither team managing a substantial lead. Marietta had the largest lead of the game coming with 1:34 left to play in the first half when they led by a score of 39-31. Marietta didn't score in the last minute and a half while Glenville managed one field goal and one free throw to give a half time score of 39-34 in favor of Marietta.

The second half of the ballgame turned out to be a real thriller.

Within six minutes of playing time the Wave had tied the score at 55-55 and had turned the crowd into a roaring zoo. The largest lead in the remaining ten minutes of play came when Glenville pushed the score to 63-58.

Both teams put on the full court press thus making it difficult to get the ball up the floor. At this point one of Glenville's freshmen, Jim Archer, really began to shine. Archer brought the ball up the floor several times among a host of Marietta players, thus showing his fine ball handling techniques.

Marietta proved that they were just as determined to win, as Jim Haslinger made good for six straight points and helped put his team ahead. With one minute playing time remaining, Marietta led 72-69. Glenville made good for one more field goal and one more free throw, while Marietta gained one more field goal and so with four seconds remaining Marietta led 74-72, but Glenville had the ball and called for time out.

When the ball was put back in play, Gary Blake took a fine shot from the corner but was fouled just as time ran out. With no time remaining, Blake had the terrible job of shooting his free throws. The pressure could be felt throughout the gym as he missed his shots and Marietta went wild as they had squeezed out a 74-72 win.

Gary Blake was high point man for Glenville with 16 points, playing fine ball. His missing the two final shots certainly wasn't the reason for Marietta's win. Blake was followed by Minnieweather with 14 points and Jim Archer with 13.

NEW FACES

The Pioneers have nine new faces on their squad this year. The freshmen have been doing a fine job thus far, and are aiding the Wave to victory. The boys are as follows:

JAMES ARCHER: 6'1" Marietta, Ohio. Archer is a freshman this year, but he has already proven himself by scoring 17 points in each game of the pre-season Shrine Tournament at Weston.
TERRY BUTCHER: 5'10", Glenville High School. Terry is a freshman and has been playing for the Glenville Red Terrors.
JAMES CANARY: (Jim), 6'1", Parkersburg High School. Jim played three years for the Big Reds, and he played one year for the Mountain State School of Com-

merce at Parkersburg.

RALPH DUNKLE: 6'5", Adna High School. Ralph lettered two years in high school. His senior year he was named to the Eastern Ohio Athletic League Team.

TERRY DYER: (Kid), 6'5", Belpre High School. Terry played three years of basketball while in high school earning his letter each year. Terry's height along with his abilities will probably give him some action this season.

ROBERT GROVES: 6'3", Bridgeport High School. Bob played three years of basketball in high school. He also has good height and will probably see action this season.

ROBERT HAMMEL: 5'6 1/2", Sistersville High School. Bob played three years in high school winning his letter each year.

PAUL LAYNE: 6'1", Charleston High School. Paul played two years in high school winning his letter each year. His senior year he made honorable mention in the Kanawha Valley Conference.

DONALD TREADWAY: (Duck), 6', Fayetteville High School. Don played three years of basketball in high school winning his letter each year. Don was named to the New River Valley Conference Team his Senior year.

31 PLEDGE THETA XI

(Continued from page 4)

Barbone and assistant pledge director is John Sivak.

Theta Xi's are currently planning another first on the Glenville State College campus. "Saint Nick's Flick" will be a semi-formal Christmas dance which will be held on Dec. 10.

All pledges are collecting toys and clothing for the annual Christmas party held for underprivileged children. This is the fifth consecutive year that Theta Xi pledges have held a Christmas party for the children.

Theta Xi pledges went on a 28 mile hike in support of the policy taken in Viet Nam. The hike took place on Dec. 3.

Intramural Volleyball Has Good Turn-Out

Intramural director Harold Erwin has reported that some 200 men have participated in the intramural volleyball tournament. "This shows how large the intramural program actually is at Glenville." At the present time, there are only two teams remaining undefeated in the volleyball tournament. The teams are The Swinging Seven, and The Theta Xi Animals.

Erwin commented that the basketball tournament will be getting underway in about one week.



Looking rather cocky after their victory over the G-Club are the G.S.C. Faculty Aces: "Medic" Morrow, "Big Beryl" Langford, "Legs" Erwin, "Hot Rod" Hardway, "Tiger" Lilly, "Robbing Banks" Wilburn; seated: "Make It" Murin, "Hammer" Byrd, "Lay-up" Loebner, "Slice Away" Smith, and "Dead Eye" Douglas. (MEH-photo by Dougherty)

Candles, Music, Art Turn W.F. To Coffee House

By DENNIS MYERS

About 125 GSC students including Wesley Foundation members, turned up to see the Wesley Foundation social room looking very unlike its usual self, on the evening of Nov. 13. Members had converted the meeting room into a coffee house and invited GSC students to attend the affair.

As students entered the candlelit room, they heard the music of Don Melton's sax, Lynn Stotler's piano, and Chuck Nichols' drums. This newly-formed group from the GSC campus is called the Dominions. The scene might have seemed incongruous to some for the religious organization, but beer bottles served as candle holders (32 bottles only, of course), standing on the burlap tablecloths. Hanging on the wall were paintings by GSC art students, including Sam White's "The American Way," probably a first for Wesley Foundation.

Students were ushered to tables, and waiters and waitresses served hot chocolate, coffee, or coke and doughnuts. Tables also held bowls of roasted peanuts, candy, and something for the bubble-gum set. On the bandstand singing folk songs were Bonnie Beane, Terry Gollar, and Fred Kuhn.

As the candles burned down the students kept coming until it was necessary to stop the selling of tickets at the door.

The entertainment was well received. Bonnie Beane, a GSC social-studies and speech major from St. Mary's, made her debut singing popular folk songs.

Coffee-house goers were also introduced to the instrumental group known as the Dominions, who play contemporary jazz and rock 'n roll. Lynn Stotler, an English and music major from Richmond, plays piano for the group. Lynn also furnished the background music for the recent dramatic production, *The Cave Dwellers*, and was first seen by students in the earlier review, *As It Were*. Chuck Nichols is a math major from Sybil. He provided the rhythm for the jazz numbers and carried the entire beat for the rock 'n roll. Don Melton from Blue Creek, a music-voice major, lends the melody of his saxophone to this already-popular group.

The Dominions played first for the SEA Conference on Nov. 11.

Since that time they have had three other engagements in the state, attesting to their quickly-growing popularity.

Besides domestic talent at the Coffee House was the performance of Terry Gollar, a social studies major at Marshall University. Terry sings in coffee houses all over the state, and was asked by the Wesley Foundation to sing for this event. With Fred Kuhn, also from Marshall, students got a chance to hear the kind of music that is played and sung on other campuses.

Terry first began singing in Philadelphia before moving to West Virginia. He has performed for the W. Va. Arts and Crafts Festival and the West Liberty Freedom Folk Festival before his appearance on the GSC campus.

Since the Coffee House of Nov. 13 there have been many requests for more of the same in the future. If interest continues, Wesley Foundation may again drag out the burlap and light the candles for another Coffee House sometime in January or February.

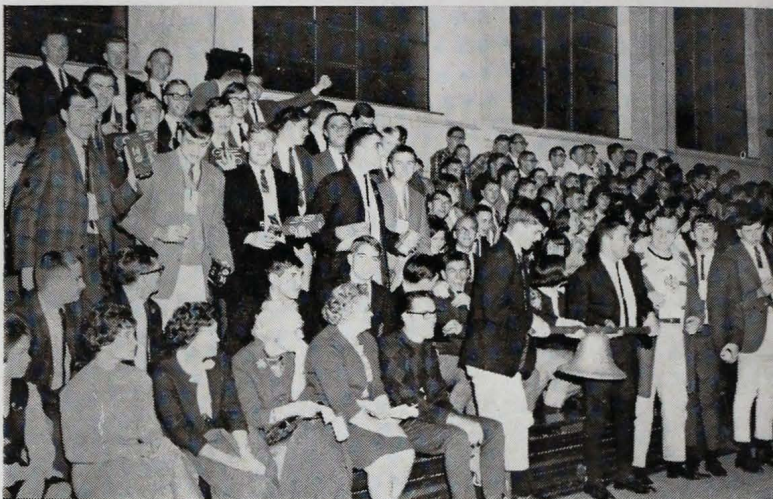
Events Must Be Scheduled

Any students or faculty members who use college space for meetings or any other type of activities should have the event scheduled on the activities calendar, Bill Meade, chairman of the Activities Committee, announced. Otherwise, two groups may plan activities for the same time and place.

Faculty members are asked to notify Mrs. Ruby Higginbotham, Dean of Women, of any meetings they plan. Such meetings may be put on the calendar immediately.

Student groups must fill out a form requesting permission for any event utilizing college space and turn it in to Mrs. Higginbotham. This will be considered by the Activities Committee, and if approved, put on the calendar. In case of two requests for the same time and place, the first one to be turned in will be given first consideration.

The Activities Committee meets the first and third Tuesdays of



Theta Xi pledges cheer as a group at the Marietta-GSC opening basketball game. (MER-photo by Dougherty)

31 Pledge Theta Xi

Theta Xi Fraternity has 31 pledges for the first semester pledge class. They are: Joe McCombs, Jim Mollohan, Frank Waldeck, Joe Badgley, Charles Gwinn, Doug Bunn, Tom Keith, Ed Berry, Roger McLaughlin, Kennie Hatfield, Dick Dawson, Bill Frost, Don Treadway, Gene Canale, Reggie Hart, Dave Nelson, Jim Core, Sam Halstead, Rodney Hickman, Mickey Hartley, Garry Ramsey, Jim Potts, Dave Sheppard, Greg Boso, Walt Dietz, Vernon Nosse, Chuck Farrell, Robert Benson, Dave Adams, Tom Herold, and Skip Shakelford.

Pledge officers are: pledge captain, Gene Canale; treasurer, Sam Halstead; and sergeant-at-arms, Charles Gwinn. Pledge director for the first semester is Richard (Continued on Page 3)

every month. Members of the committee are Mr. William S. Deel, Mr. Milton E. Kern, Dr. Alfred T. Billips, Jr., Mrs. Ruby C. Higginbotham, Bill Meade, Diane Camp, Joy Cosby, and Mike Guiles.

What Can We Do?

By WILLIAM MONK

Much concern has been expressed recently concerning the type of dramatic productions we may see here in the future.

Questions have been raised concerning the abilities of our drama department to successfully produce a serious, well-chosen script with good characterizations, good costuming and make-up, efficient lighting and sound, and all that goes into the making of a good show.

We have heard cries for over-used shows like *Antigone*, outmoded plays such as *Mother Courage*, and sophisticated comedies similar to *The Leader* by Ionesco. No doubt there are people on campus who would like to see a "Wilbur" play. Just the opposite, however, would be that faction of interested patrons of the Theater who would enjoy *Sound of Music*, *The Diary of Anne Frank*, or *Mary, Mary*. There may be a few who could even vaguely understand *Rhinoceros*.

We have now determined that different people like different things. This, I think, is quite an asset to any theatre group. But what does Glenville State College want from us? Judging from the reactions to *Romeo and Juliet*, they want an out-of-place comedian catching and eating flies while distracting their minds from one of the most beautiful love plots ever written; or from *The Cave Dwellers*, they want something less involved, less stimulating, and even less collegiate. Heaven help us if *Everyman* or something more than *27 Wagons Full of Cotton* were attempted here. I think more appropriate would be a night of one-acts including simple, silly plays such as *Oil Wells and Wedding Bells*, *Onions in the Stew*, and *Night Scene*.

It seems, then, that a question of great importance arises. Should we give our audiences what they want, or should we attempt to intellectually challenge them and our dramatists?

All of us, regardless of our primary interests, should by now be aware of the revolution in theatre introduced by contemporary theatre to collegiate dramatists. The theatre is rapidly changing. Like other art forms, it is asking "why" do we live, and "how" do we live. This to me is an intellectual study of ourselves and the world in which we exist. Man needs to evaluate the people, places and things with which he is in contact every day. Why is this concept of the stage so hard for our students, faculty, and administration to grasp?

My concern on this point is justifiable, judging from the meager numbers in the auditorium during the *Cave Dwellers* run. It is disgusting to us as students and actors that only one member of our administration attends a major production here, not to mention only a mediocre showing from our faculty. Yet they came in droves to see *As It Were*, a show of definitely less merit intellectually, and will probably be there in numbers to see what I term a useless piece of literature, *The Drunkard*, which is a melodrama. These are but a few points supporting my contention that in present day theatre, a performer must not lower himself to play to an audience—at least not to a noticeable degree. The theatre has come of age; it is not being educated. Instead, it is educating.

How about equipment? Potential talent we have in Eugene Nesbitt, Vicki Tucker, Larry Hall, and Jo Bean, to name only a few. I know Nesbitt well, and I know that he is more than capable. Miss Tucker has not made her debut here, but has a talent that, if seasoned, will make her one of our most appreciated performers. To say Larry Hall has only a "spark" of talent is a bit too hasty and similarly unjust. Jo Bean's performance in *Cave Dwellers* was a thrill to behold. Director-wise, J. Rodney Busch is beyond a doubt the greatest asset to our productions.

I think I have made it clear that I do not believe that the drama department should break its back trying to please the masses. This is no longer the responsibility of the theater. Recent campus productions have succeeded in entertaining; they have failed in seriously interpreting life. It is the latter that is the real responsibility of the theatre.

Alpha Delta Epsilon Holds Initiation for 16 Pledges

During a recent pledge week conducted by Alpha Delta Epsilon, the following business students pledged the local fraternity: Celeste White, Anita Gavin, Jean Locke, Patricia Cross, Sandra Beal, Sandra La Grande, Linda Wood, Judy Stump, Jane Weese, Marjorie Michael, Phyllis Frame, Evelyn Post, Carlton Spicer, Michael Bates, Larry Clifton, and Bill Hutchinson.

These new members were initiated at an initiating ceremony and party on Nov. 30, in the multi-purpose room of the Pioneer Center.



Terry Gollar and Fred Kuhn entertain at the Wesley Foundation coffee house. (MER-photo by Hall)