

# The Glenville Mercury

Volume XL, Number 2

Glenville State College, Glenville, West Virginia

Friday, September 20, 1968

## Nu Lambda Psi Organizes, Holds Mix, Plans Activities

In the spring of 1968, a group of women began discussing plans for organizing a new sorority on Glenville State College's Campus. Although progress was slow at first, a constitution was written and the women agreed on their official name of Nu Lambda Psi. The first official meeting was during the last week of the 1967-68 school year with twenty-four charter members and two advisors, Mrs. Bonnie Vineyard and Mrs. Peggy Hayward.

The Purpose of Nu Lambda Psi is to challenge young women to broaden their horizons by preparing them to accept responsibility, leadership, and friendship.

At present Nu Lambda Psi is a local sorority but has plans of becoming a pledge colony in the future. Several national sororities are now being considered and contacted.

The new sorority's official flower is the blue Shastadaisy and their colors are cornflower blue and lime green.

Although Nu Lambda Psi has no record of past activities, they were the first Greek Organization to hold a mix this year. The mix was held, Saturday, Sept. 14, in the ballroom featuring the Philly Lee Byrd. Plans are being made to sponsor a major dance in the spring and for participation in Homecoming, Mothers Day Sing, and various community projects.

Lana Turner is the president of Nu Lambda Psi. She is a junior majoring in elementary education. Miss Turner is from White Sulphur Springs.

Brenda Sinett, a junior majoring in physical education and language arts, represents Nu Lambda Psi as vice-president. She is from Harrisville.

Corresponding secretary is Margret Susan Welford. She is a junior transfer student from Marietta College majoring in English from Belpre, Ohio.

Jane Dyer, a sophomore majoring in English and business, is the recording secretary. She is from Faltwoods.

Victoria Umstead, a sophomore from Grantsville, is Nu Lambda Psi's treasurer. Miss Umstead is majoring in English.

Chaplin of the sorority is Judith Ann Arnold, a sophomore majoring in elementary education from Charleston.

Other charter members are: Mary Alice White, Jeanie Beachler, Peggy Kirby, Debra Gruesser, Phyllis Lamm, Ellyn Meadows, Stephanie Barth, Lara Weaver, Juanita Cain, Mary Norman, Mary Kay Ball, Martha Hamric, Barbara Jo Boggs, Mary Ann Osborne, Ann Smith, Elizabeth Jarvis, Paula Wince, and Paula Moore.

Nu Lambda Psi meetings are held on the first and third Mondays of each month at 6:00 p.m.

## Needed - Photographer For Second Semester

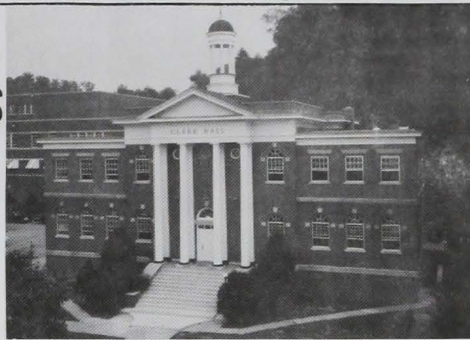
The MERCURY is presently interviewing applicants for the position of staff photographer second semester. Qualification - a sincere interest in photo-journalism - the rest can be learned.

For further information please leave your name, address, and phone number in the MERCURY office.

## Wood Co., Ohio Groups Meet

Wood County Chapter of the Alumni Association will hold its first annual meeting, September 19, at 7:30 p.m. on the fifth floor of the Wood County Welfare Dept. office building at Sixth and Avery Streets in Parkersburg. The chapter is planning to expand its membership this year to include all neighboring counties. Campus alumni are invited to attend. Nancy Blake is the new chapter president and is planning an active year for the chapter membership.

Ohio Alumni will hold their first social gathering on Saturday, November 2, at 2:00 p.m. in Strongsville, Ohio. Alumni and friends will gather at the Towne 'N Country Club in Strongsville for dinner and an evening of reunion. A number of campus alumni plan to attend and invite others to go along. Reservations may be placed with the Alumni office. Cost is \$5.00 per person. This gathering is being modeled after the highly successful Annapolis meeting of last spring and should draw more than a hundred alumni and friends.



Clark Hall

## Gov. Smith Speaks At Formal Opening

By James Bull

Governor Hulett C. Smith will be the guest speaker for the formal opening of Clark Hall on Friday, Oct. 18 at 3:30 p.m. Sharing the terrace platform with Gov. Smith will be H. Y. Clark, for whom the building is named. Clark is a retired member of the faculty of Glenville State College.

Mr. Clark graduated from West Virginia Wesleyan College with a B.A. degree in 1917 and graduated from Columbia University with an M.A. in 1926. He has completed additional graduate study at the George Peabody College for Teachers in 1926-27 and 1930.

Prior to accepting a position at Glenville State College, Mr. Clark held the following positions: Principal of Wallace High School, 1917-18, Principal of Smithfield Schools, 1919-20, teacher at Fairmont High School 1920-22 and Principal of Grafton High School, 1922-26.

Mr. Clark came to Glenville in the fall of 1927 as a professor of elementary education. He continued as a member of the college faculty until his retirement in 1955, and during his stay here he served in several capacities. In addition to being a member of the faculty in the education department, he supervised student teachers and taught English, social studies and West Virginia history during the years of World War II. He taught extension courses for several years in Clendenin, Parkersburg, St. Marys and Richwood. From 1950 to 1955 he was director of Extension and Field Service.

Active through the years in educational and civic endeavors, Clark was named to the State High School Athletic Board of Appeals in 1922 and served as its secretary until he accepted a position at Glenville. He was a member of the first State Teachers Education Committee and served as its secretary for five years. He was the co-director of the Attendance Directors Workshop for seven years.

Mr. Clark is a member of Phi Delta Kappa, WVEA, Rotary International and the First Methodist Church in Parkersburg. He is actively associated with the Parkersburg Chapter of Glenville State Alumni where he was honored with an honorary lifetime membership at a recent dinner ceremony.

He comes from a family of ed-

ucators, having brothers and a sister who are well known in this area for their teaching endeavors. His wife also teaches in Vienna, where they now reside. The Clark's have two daughters and seven grandchildren.

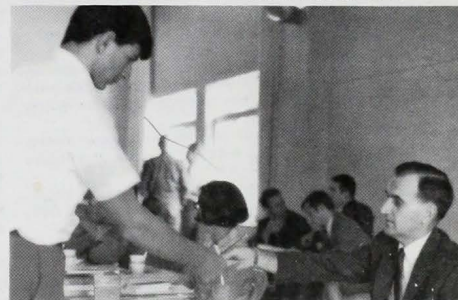
The Division of Education and Psychology offices of which Mr. Clark was a member, the journalism department, MERCURY offices and faculty offices are being housed in the renovated building.

## NTE Exam Scheduled For Nov. 9 On Campus

All candidates for an A.B. degree in teachers education in January must take the National Teachers Examination Nov. 9.

Test results must be on file in the Dean Sommerville's office before recommendation can be made for graduation or certification.

Interested students should register in Mr. Kermit Kinder's office before Oct. 10, 1968.



Scene at Registration

## Fall Registration Procedure Becomes Simpler, Smoother

Students found registration at GSC simpler and smoother this year than in the past years. Although registration was held on Sept. 10, 11, 12, most upperclassmen pre-registered last spring and freshmen pre-registered July 30, 31, and August 1.

Pre-registration was held when students met with advisors and arranged their schedules early. All changes were made by division chairmen enabling most students to register faster

## Ross Announces Teacher List

Student teaching assignments for the first nine weeks have been scheduled as follows, according to B. E. Ross, chairman of the Division of Education.

Thirteen students are listed in the elementary field of education. Teaching in Harrison County are Carolyn Bunn and Marilyn Peterson at Nutter Fort; Gary Cross at Norwood; and Agnes Lowther at Towers School. Wood County will host Karen Anderson, Veronica Blamar, Sharon Morrison and Rosemary Roberts at Greenmont Elementary; Cheryl Carr at Roosevelt Elementary; Geraldine Jones, Patsy Keith, and Andrea Lipscomb at Vienna Elementary; and Nancy Duncan at Mineral Wells.

Fifteen students will be teaching in the secondary schools during the next nine weeks. Greta Hayhurst and Shirley Phillips will be teaching English at Sutton High School. Teaching at Bridgeport High School are John M. Bragg in the field of physical education and John R. Weber in social studies.

Jackson County will host Carol Folger, music; and Celeste White, business, at Ravenswood High School while Kimberly King, math; and Sharla Gladwell, English; will be teaching at Ripley High School. Michael Cooper is teaching physical education and Arden Dean is teaching social studies at Weston Junior High School in Lewis County.

Patricia Masters is teaching English at Parkersburg while Cheryl Carr is teaching music and Stanley Herold is teaching physical education at Parkersburg South High School. Both schools are in Wood County. Pleasants County has Lyndon Davis teaching physical science and Guy Franklin Lewis teaching English at St. Marys High School.

Student Teaching which started September 16 for these students will end November 1.



Nu Lambda Psi Sorority





Did You Hear "Doc" Miller's Lecture?  
Imagine, Hippies at Glenville?!!

## To Publish or Not Publish ?

My Fellow Students:

Progress has become a great part of GSC's campus since the present seniors were freshmen. A wing has been built onto Women's Hall, a beautiful library has been erected, Clark Hall has been renovated, Tau Kappa Epsilon Fraternity and Delta Zeta Sorority have opened living quarters for members and the Wesley Foundation has opened for student recreation.

The *Glenville Mercury*, college newspaper, has also been included in the progress. The *Mercury* has grown from a semi-monthly to a weekly publication with a staff of nine and 31 reporters.

There are many things involved in a college newspaper. Besides trying to bring students up to date on what's happening around campus, publicity is also involved. Publicity is probably the best advertising policy that GSC can employ. This advertisement can be found in the press releases sent to local area newspapers and in the issues sent to other colleges and to high schools.

The *Mercury* is a student newspaper. Those services with which it provides you, the student, are endangered by a bi-weekly publication date. Who wants to read about a game played two weeks ago? Of what value is an article about a dance to be held week-after-next? How can Greek organizations maintain a healthy rivalry when publicity is two weeks old? Can students be adequately informed about actions taken by the administration or SGA on a bi-weekly?

Also caught up in the dilemma is the effect a bi-weekly would have on GSC and in the areas beyond Glenville. The circulation of the *Mercury* extends from Rhode Island to Florida, from New Jersey to Iowa. The impression that we make determines the image and prestige of the school and also whether or not students will elect to come to Glenville.

Another area that will be hurt by a bi-weekly schedule is the accurate record of the college history. This history is based upon articles appearing in the *Mercury*. When news is not recorded, the history cannot be completed.

The quality of the paper itself will also be jeopardized. Stories will either be two weeks old or two weeks in advance. It will lose its timeliness and news value.

Considering the many disadvantages of a bi-weekly and the advantages of a weekly, it is imperative, for the best interest of GSC, that the *Mercury* be a weekly publication.

Respectfully,

Patrick L. McCartney, Janet Kesterson, Robert Scott Cribbs  
Photographer, Assist. Editor, Editor

Editor's Note: Since this editorial was set, the president, the advisor, editor, president of the SGA, and Business Manager have collaborated to insure that *The Mercury* will be published weekly at least for the first semester. Advertising will be increased to supplement publication costs.

The *Glenville Mercury*  
The Student Newspaper

Glenville State College, 200 High Street, Glenville, W. Va.

Editor ..... Robert Scott Cribbs  
Assistant Editor ..... Janet Kesterson  
News Editor ..... Sharon Dutton  
Photographer ..... Patrick McCartney  
Advertising Manager ..... Newton Nichols  
Circulation Editor ..... Jim Bull  
Sports Editor ..... Ken Cutright  
News Bureau Director ..... Kathy Casto  
Adviser ..... Yvonne H. King  
Typist ..... Judy Posey  
Printed by Grantsville Printing Co., Grantsville, W. Va.

## Drama Group Is Prominent

Alpha Psi Omega is one of the oldest organizations on the Glenville State College Campus and its enrollment continues to grow as the years go by.

Founded in 1925 as a national honor society for the university and college theatre, Alpha Psi Omega has over 370 chapters in the United States and Canada. Over 20 large state universities are members of Alpha Psi Omega, and great private universities are represented on its chapter roll by other institutions.

The purpose of Alpha Psi Omega is to give students recognition for their work in theatre in the same way that students in other departments are honored.

Alpha Psi Omega sets a goal for all workers of the college theatre; it is a standard of achievement to theatre students in each of the 370 colleges and universities where its chapters are located. Each of these institutions is a fully accredited, degree-granting institution, for there are no junior colleges on the rolls of the Alpha Psi Omega Dramatic Fraternity.

In place of a national theatre that receives state support as in some countries, the great national theatres of America are the tax-supported, college and university theatres. These schools of the theatre do not turn out actors who swell the ranks of the unemployed in Actors' Equity. Alpha Psi Omega members, if denied work in the professional theatre, armed with a degree and solid background in technical training, can find employment in the educational theatres as directors, technicians, and teachers of acting and theatre arts. The supply of these university-trained people who can teach speech and drama has a long way to go to catch up the demand.

Copies of the publication of Alpha Psi Omega, called *THE PLAYBILL*, go to 600 colleges and universities whether they have a chapter or not. The magazine serves to acquaint workers in the college theatre about what other educational theatres are doing.

Some Alpha Psi Omega members who have gone on to distinction in the professional theatre are Robert Taylor of MGM, Agnes Moorhead, Robert Vaughan, Joe Gallison and Don Knotts, Hollywood, and Dan Blocker of Bonanza.

Anyone interested and qualified to join this fraternity is invited to contact William Monk or William Lewis for information and application forms.



DZ Booth At Organization's Meet

## GREEK NEWS

### Mrs. Brown Named House Mother

Mrs. Rita Brown, a native of Wirt County, is the new house mother for forty-five active members of Delta Zeta Sorority. At her home away from home, she is known as "Mama Brown", a woman who is as domestic as she is respected.

She has three children, one who is a freshman at Alderson-Broadus College in Phillipi. Mrs. Brown's elder daughter, Roberta Hall, is married and lives in Palestine where she teaches elementary education. Glenn, her only son, is employed by DuPont and resides in Mineral Wells.

Before becoming a mother to forty-five others, "Mama" Brown was a housewife and a cook in an elementary school in Wirt County. When asked what inspired her to undertake the task of supervising a group of girls, she replied, "After my husband died, I needed something to occupy my time. I enjoy being with young people and feel that being a house-mother would be a pleasant job. When I saw the sorority house, I thought it was beautiful and after I met the girls, I knew it was exactly what I wanted to do. I am sure that it will be a pleasant and most rewarding year for all of us."

### Sorority Gets Dorm 'Home'

As of Sept. 8, 1968 the Gamma Kappa Chapter of Alpha Sigma Alpha found a new home. It is located on the short wing on the third floor of Women's Hall. On the wing is found the sorority lounge where the girls can gather.

On Sept. 12, Alpha Sigma Alpha had a booth on display in the gymnasium for the freshmen. The theme was "Up, Up, and Away with ASA." Displayed in the booth were the pin, pillow, star, and trophies of the sorority.

A retreat is being planned early in the fall of this semester for the discussion of future social activities.

The Financial Aid Office, on the recommendation of the federal government, has distributed a student cost questionnaire to be filled out and returned by Sept. 27, 1968.

Mr. Lamb has requested that all questionnaires be turned in, in order to gain an accurate report.



Mrs. Rita Brown

### TKE's Meet, Initiate Two

The fraters of Tau Kappa Epsilon held their first formal meeting of the year Monday, Sept. 16. Formal initiation was held after the meeting.

Michael Devol, a sophomore from Caldwell, Ohio, was duly initiated into the fraternity bonds of Tau Kappa Epsilon. Devol is a biology and physical education major.

Donald Swisher, a junior from Ripley, was initiated also. Swisher is majoring in physical education and is a transfer from Fairmont State College.

Frater Michael Taylor, a senior majoring in social studies, announced his candidacy for Pioneer.

The first TKE party of the year is scheduled for Oct. 5. Paul Stephen Wells, chairman of the social committee, is working on the plans for the closed dance.

Frater Richard Turner, from West Chester, Pa., was welcomed into the bonds. He has been serving in the Army and was a Holy Roller Court member.

Frater David Keefe, President of TKE, was congratulated for his quote used on the back of the TKE International Magazine, "Every successful ending was but an idea in the beginning."

The partial enrollment for the first semester numbers 1521, according to information from the Office of the Registrar. This is compared to the partial enrollment of 1583 for first semester last year. These numbers do not include three extension classes and part-time students.

### GSC Literary Society Schedules Oct. Meeting

Literary Society at GSC will hold its first meeting in early October. All freshmen and upper classmen are invited to attend. The meeting will be held on Sunday afternoons monthly in Old Louis Bennett Lounge. The following books, short stories and poems are scheduled for the 1968-69 school year:

October - *Lord of the Flies*, William Golding.

November - *The Bear*, William Faulkner.

December - *Billy Budd*, Herman Melville.

January - poetry

February - *The Crucible*, Arthur Miller.

March - short story.

April - *Ethan Frome*, Edith Wharton.

May - open (modern poetry).





'68 Pioneers

## Pioneers Begin Season At Portsmouth, Va.

Release — Portsmouth, Va.

The Glenville State College Pioneers, under the tutelage of Coach Bill Hanlin and his assistants Robert Summers and Earl Adolfsen, got down to some real hard work on Sept. 2 in preparing for their first appearance in the Fish Bowl Classic at Portsmouth, Va., Sept. 21.

The Pioneers will meet Norfolk State College in the benefit game, sponsored annually by Arabia Temple No. 12 of the Shrine to raise funds for the Shriners' National Cancer and Tuberculosis Research Foundation.

With a squad of 30 veterans as a nucleus, Coach Hanlin and his staff are certain that they will be ready to make a representa-

tive showing against their rugged CIAA opponents.

Standouts in Glenville's lineup are Tommy Haight, a 165-pound speedster, who will be playing his third year at halfback; Marcus McPhail, a junior from Ripley, who will lead the team at quarterback; and Steve Seals, a 225-pound fullback who prepped at Charleston High School and was a consistent ground-gainer for the Pioneers last season.

Dale Sheets, another Charleston product, came to Glenville as an All-State linebacker and he has been living up to his reputation as a member of the Pioneers' defensive unit.

Coach Hanlin, in his third year at the helm of the Pioneers, guided Glenville to third place in the West Virginia Intercolleg-

iating out of their class in meeting a CIAA member.

However, he was reminded that the Pioneers defeated the W. Va. State 19-7 last year while Norfolk State eked out a 6-3 win over the Yellowjackets.

Noble Charles H. Harris, deputy of the Oasis and long-time member of the Fish Bowl Promotion Committee, advises patrons to purchase tickets early. Advance sales will end Sept. 19 and out-of-town fans may secure information and tickets by contacting the Fish Bowl Committee, 431 Effingham St., Portsmouth, Va.

## As I See 'Em

By Ken Cutright

Coach Bill Hanlin, his staff and Pioneer football team will open their season Saturday, Sept. 21 in the annual Fish Bowl Classic at Portsmouth against a Virginia State team that is pretty much a blind encounter for the Pioneers. Coach Hanlin and his staff know nothing about the opponent and will have to rely almost entirely on guess work.

With the personnel the staff is working with this season and the experience they have gained since Coaches Hanlin and Adolfsen's arrival this should not be so difficult as it could be. Seasoned signal caller Mark McPhail and All-Conference half-back Tom Haight will be in their third year as regulars while Steve Seals is in his second fullback (he was all-conference defensive end as a sophomore). The Va. State Defense should not be as illusive after the offset of the game. Rounding out the backfield will be transfer Jim Heaton who played under Hanlin at St. Mary's and spent some time playing for Marshall University.

The line is just as experienced with ends Mike Deem and either Bill Frost or Mike Roscoe, tackles Bill Boggess and Sterling Beane, guards Larry Ackison and Harold Price and center Joe Scalise.

Then defensive unit which for the first four games last season was the conference leaders and one of the natural leaders has given regulars returning to throw some rocks into the offensive wheels they will be encountering.

Jim Sprague, who last year led the team with seven interceptions, and captain Dale Sheets are expected to lead the defense again this year. Freshman Steve Stoffel will be at one end and veteran Joe Painter at the other, the titanic Gary Ray and Sims will be at tackles with Joe Frashier at middle guard. Linebackers are Sheets and Dave Rawson with monsterman Tom Smith, a transfer student and the deep men are Mike Devol, Sprague and John Noland.

The material, experience and coaching staff are certainly capable and now all that remain to be seen is whether or not the desire is there.



Freshmen Team

### Offense STARTING LINE-UP Defense

SE Roscoe or Frost	RE Steve Stoffel
LT Boggess	RT Sims
LG Price	MG Frashier
C Scalise	LT Ray
RG Ackison	LE Painter
RT Beane	HB Devol
TE Deem	HB Sprague
QB McPhail	Safety Noland
LHB Heaton	LB Sheets
FB Seals	LB Rawson
RHB Haight	Monster Smith
RAT Frost	
Punter Williams, Fr.	

The Glenville State College Freshmen football team will meet Marietta College in the opening game of the season at Grantsville, Monday, Sept. 23, at 8:00 p.m.

## Ship'n Shore

Bully button-downer lives up to the Oxford tradition.

5.00



The new tapered shape gets authentic treatment from collar to cuff. With locker loop and neat back pleat. Easy-care 50% polyester/50% cotton Oxford. Haberdasher colors. Sizes 28 to 38.

## Glenville Midland Co.

GLENVILLE, WEST VIRGINIA

## Fire Drill Set

There will be an evacuation drill on Wednesday, Sept. 25 at approximately 9:40 a.m. and another on Tuesday, Oct. 1 at 9:05 a.m., according to Mr. Loren McCartney and President D. Banks Wilburn.

The Administration Building, Clark Hall, the Pioneer Center (including the Bookstore, Food Service, Game Room, Kindergarten, and Snack Bar), the Robert F. Kidd Library, the Health and Physical Education Building and the Science Hall will be evacuated.

Students should not attempt to carry books and other materials with them during the drills. They may return after the "all clear" is given and pick up any property.

## STATEMENT OF OWNERSHIP

Statement required by the Act of Aug. 24, 1912, amended by the Act of Oct. 23, 1962; Section 4369, Title 39, United States Code showing ownership of the Glenville Mercury, a newspaper published weekly at Glenville State College, W. Va., as of Sept. 8, 1968.

Adviser: Mrs. Yvonne King, Editor, Robert Cribbs.

The owner is Glenville State College. Known bond holders: none.

Average number of copies of each issue sold or distributed through the mail or otherwise to paid subscribers during the twelve months preceding the date shown above was 1800.

Mrs. Yvonne King, Adviser  
Robert Cribbs, Editor



FOR ALL YOUR FLOWER

NEEDS:

CORSAGES

GIFTS

ALSO COMPLETE

ALSO COMPLETE  
SELECTION OF  
GLASSWARE

SEE:

MINNICH FLORIST

Glenville, W. Va.



## 'C' English Students Exempt from Exam

Students who have an over-all 2.0 (C) average or better in English 101, 102, and 202, will be exempt from taking the English Proficiency Examination. According to information from the Teachers-Education Committee, the policy is effective beginning September 1, 1968.

Those students with less than a 2.0 (C) average in English 101, 102, or 202 are required to take the exam at a regularly scheduled time. If a student fails either the objective or English Composition portion, or both, he may repeat the test one additional time only.

Failing one or both parts of the English Proficiency Examination twice will mean acquiring an over-all average grade of 2.0 (C) in English 101, 102, and 202. Although it is not a requirement to have a grade of 2.0 (C) in each of English 101, 102, and 202, a student must have an over-all grade of 2.0 in the three classes to be eligible for admission to a program in teacher education.

"As an interim policy to govern instances where students failed the English Proficiency Examination, or any portion thereof, prior to September 1, 1968, such students may elect to repeat anyone or more of courses, English 101, 102, or 202, in which they have a grade of less than 2.0 (C) shall be required for admission to a program in teacher education.

"The interim policy shall terminate as of June 6, 1969. After this date, the regular policy governing the English Proficiency Examination shall apply to all students. The English Proficiency Examination Committee shall be the arbiter in all cases which may arise during the interim period."

Members of the Committee include Elsie Deal, Dr. Epsy Miller, Dr. B. E. Ross, James Moorehead and Charles Jeffries.

## Films Listed

A series of seven foreign films will be available for student viewing this semester at GSC.

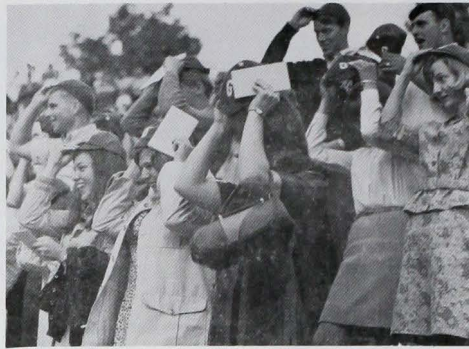
The tickets for admission for the entire semester are \$3 for a single ticket, and \$5 for a couple tickets. Admission for non-ticket holders at the door will be \$.50.

Dates for the movies are not yet set, but will be announced in future issues of the *Mercury* and also on posters on campus.

WANTED BY RECORD CLUB OF AMERICA  
CAMPUS REPRESENTATIVE  
TO EARN OVER \$100

Write for information to:

Mr. Ed Benovy, College Bureau Manager  
Record Club of America Club Headquarters  
York, Pa. 17401



Freshmen Capping

## Students Selected To Aid Committees

In May 1968, an amendment was made to the Faculty-Administrative organization constitution that the standing committees of the FAO will include one or more students as members. The officers of the Student Government association appointed students to the committees. Those appointed are listed below.

Named to the Academic Affairs Committee are: Paul Scott Peck and Frank Michael Pfaff. Thomas Dent is the alternate student member.

Four student members are two student alternates were appointed to the activities committee. The student members are: Tilden Lee Hackworth, Paul Stephen Wells, Ruth Ann Orendorf and Ellen Hartley. The alternates are: Brenda Kay Sinner and James Henry Settle, Jr.

Serving on the admissions committee are: Carol Hauman and Sylvia Comer, student members; and Stephen Frederick Barnett, alternate.

Roger Dale Sheets and Thomas DeWitt Haught are student members on the Athletic Committee. Serving as the alternate is Stephen Seals.

The three student members on the Campus Planning Committee are: Kenny Smith and Patricia Ann Paugh, members; Patricia Urbas, alternate.

Student members serving on the Commencement Committee are: Gary Lee Farnsworth, Dennis Cunningham, and Linda Ball, alternate.

Thomas Dent and Peggy Adams are regular members on the Comprehensive Examinations Committee. The alternate on this committee are Sue Ann Stalnaker and Lana Turner.

Serving on the Convocation and Lyceum Committee are Deborah Ann Campbell, Joseph Davis and alternate, Rita Darlene Barnes.

Two regular members and two alternates were named to the Curriculum Committee. They are: Steven Ash and Roberta Shank, regular members; and Joseph Davis and Jacqueline Pitts, alternates.

Named to serve on the English Proficiency Committee are: James Moorehead and Charles Jeffries, members; and Beverly Hurst and Judith Dobbins, alternates.

Shirley Starcher and Ronald Blankenship are the members who will serve on the Faculty Welfare and Academic Freedom Committee. Mary Alice White is the alternate.

The Freshmen Testing Committee has two members and one alternate. They are: Myra McKee and Lillie Katherine Oliver, regular members; and Elynn Meadows, alternate.

Anne Wilkes and Martha Wanless, members; and Margaret Elaine Arnold, alternate will serve on the Library Committee this year.

Those serving on the Loans and Scholarship Committee are: Jack Albert, Jr., Stephen Davis and Candance Warren, regular members; and Robert Petty, alternate.

The student members on the Publications Committee are: Gary Ramsey, Robert Scott Cribbs, Sharon Neeley, regular members; and Sharon Dutton, alternate.

On the Student Life and Welfare Committee are Judith Elkins and Ralph Paugh, regular members; and Gary Ramsey, alternate.

The three regular members and one alternate who will serve on the Teacher Education Committee are: Sue Sullivan, Thomas E. Thomas, and Robert Scott Cribbs, members; and Patsy McVey, alternate.

## 560 Freshmen Attend Week of Activities

On Sept. 8, the dormitories opened for freshmen. Approximately 560 freshmen came to GSC this fall.

That afternoon the Parents Convocation was held as an orientation session. At this time the administration was introduced and the parents were given an opportunity to ask questions. In the evening freshmen attended their first orientation session. Girls met in the auditorium and men in the gymnasium.

On Monday morning freshmen attended a general assembly at which Delmer K. Somerville, Dean of the College, addressed them on the academic programs at GSC. Also on Monday they met their advisors. The French placement test was given for interested students who had had two units of high school French.

At 2:00 p.m. another general assembly was held. At 4 p.m. Dr. D. Banks Wilburn, president of the college, as well as the local ministers addressed the freshmen. The ministers introduced them to the churches in Glenville. A reception was held Monday evening. At this time, freshmen met the faculty and administration.

Yearbook and I.D. card pictures of freshmen were taken on Tuesday, Sept. 10, as well as registration. A party was given by Wesleyan Foundation at 4 p.m. Capping ceremony which was scheduled for Tuesday evening was cancelled because of rain. A mix was sponsored by the SGA and started at 8 p.m. The Philly-Loo Byrd played for the mix in the student union.

Most of the day Wednesday was taken up with freshmen testing. That evening freshmen attended two orientation sessions.

A general orientation session was held on Thursday at 9 a.m. From 2-2:45 in the afternoon freshmen whose last initial began with A to L attended an orientation on the organizations on campus. From 2:45-3:30 p.m. those with the last initial from M to Z attended this session. This consisted of displays by several organizations on GSC campus. Those organizations that participated were: Alpha Psi Omega, Ohningohow Players, Alpha Sigma Alpha Sorority, Nu Lambda Psi, Phi Delta Phi,

Student Education Association, Baptist Student Movement, Theta Xi Fraternity, Delta Zeta Sorority, Tau Kappa Epsilon, Omega Kappa Phi, 4-H Club and the *Glenville Mercury*. Thursday from 7:30 -10:00 the Greek Council sponsored a mix in the ballroom. The Philly-Loo-Byrd played for this mix also.

On Friday, Sept. 13 classes began. On Friday 13th no less. That evening a square dance was held in the ballroom from 7:30 -10:30.

Nu Lambda Psi, the newest sorority on campus, sponsored a mix on Saturday evening. Once again the Philly-Loo-Byrd played.

On Sunday students had the opportunity to attend the church of their choice.

And Monday began a full week of classes.



### INSTANT-MATIC BANKING HERE!

That's our quick, lazy-as-a-lounge-chair DRIVE-IN teller window service! You drive in; bank right from your car seat; and drive out... quick, quick, quick! Best way to bank en route to work, school, shopping... wherever you're going. Try it!

### DRIVE-IN BANK HERE!

## Kanawha Union Bank

GLENVILLE, WEST VIRGINIA

Member of the F.D.I.C.

## Howes Dept. Store

Shoes and Clothing for the Entire Family.

"A Business Built on Quality."