

The Glenville Mercury

Number 17

Glenville State College, Glenville, West Virginia

Friday, January 18, 1974

Winter Production Presents "Picnic"

Glenville State College speech department proudly announces the cast of its Winter production *Picnic* by William Inge. The Pulitzer prize-winning play is set up in a small Kansas town and involves two neighboring families comprised of women and their relationship with the irresistible young man who literally bursts into their lives.

Kim Wilson, a senior physical education major from Parkersburg has been cast in the male lead of "Hal Carter." Hal is the brash young intruder whose seemingly everything yet is weak and frightened on the inside. The son of Mr. and Mrs. J.W. Wilson of Parkersburg, Mr. Wilson is a member of the Theta Xi Fraternity and is GSC's Pioneer.

Cast opposite Hal is Peggy Jo Ward as Madge Owens, the very beautiful and sensitive heroine of the play. Ms. Ward, a senior music major, is a member of the Delta Zeta sorority, Concert Choir and Band. She is the daughter of Mr. and Mrs. William W. Ward of Weston.

Judy Ditlow, a sophomore elementary education major will portray Flo Owens, mother of Madge and Millie. Judy appeared as the female lead in the speech department's fall production, 'Come Blow Your Horn.' She received the Make-Up award for 1972-73, is secretary of Ohnimgohow Players and is also a member of Alpha Psi Omega, national dramatic fraternity. Ms. Ditlow is the daughter of Mr. and Mrs. John O. Ditlow, Jr. of Harrisville.

In the supporting role of Millie, the very intelligent yet tomboyish youngest daughter of Flo, is Kay Woody Bunton. A senior physical education major, Ms. Bunton is a member and past President of the Delta Zeta sorority and is a member of the Mercury staff. She is the daughter of Mr. and Mrs. Paul E. Woody of Ripley.

Jo Ann Westfall, a junior physical education major has been cast in the supporting role of Mrs. Potts, neighbor of Flo, who was forced into an annulled marriage early in her life and has served as private nurse maid to her aged mother. Ms. Westfall is the daughter of Mr. and Mrs. Chester Westfall of Glenville is a member of the Delta Zeta social sorority and is

currently serving as one of GSC's varsity cheerleaders.

Also in a supporting role is Marlana Smith as Rosemary, an old maid school teacher dying to get married. Ms. Smith is a sophomore social studies major from Fairmont.

She is the daughter of Mr. and Mrs. Oran L. Siers, is vice-president of membership of the Delta Zeta sorority, is a member of Student Congress and history honor society.

Playing opposite Marlana is Robert Dye in the role of Howard Bevans, a neighboring businessman and the object of Rosemary's affections. Howard is satisfied with having no relationship more binding than a one-night-stand at a local hotel. Mr. Dye is a senior chemistry major, and the son of Mr. and Mrs. Robert Paige Dye of Letart. He served as technical director for *Butterflies are Free* and *Readers Theatre*, is president of Alpha Psi Omega and treasurer of Ohnimgohow Players.

Appearing in the role of Bomber, an immature obnoxious 16 year old paperboy, is Steve Deem, a sophomore Business major. Mr. Deem is the son of Mr. and Mrs. Sanford Deem of P-burg and is a member of the GSC football team.

Danny Taylor, a senior music major, will portray Alan Seymore, the rich, mature and well-mannered boyfriend of Madge. Mr. Taylor is the son of Mrs. Donald Taylor of Glenville, is a member of the concert choir and Lambda Chi Alpha fraternity.

Ms. Barbara Musik, a senior physical education major has been cast as Irma Kronkite, an energetic, attractive schoolteacher. Ms. Musik is the daughter of Mr. Steve Musik of Elyria, Ohio, is a member of the Delta Zeta sorority.

Cast as Christine Schoenwalder, another single schoolteacher, is Ms. Barbara Stemple, a sophomore speech major from P-burg. The daughter of Mr. and Mrs. John Stemple, Ms. Stemple is active in Ohnimgohow Players and Order of Diana, auxiliary to TKE fraternity.

Picnic is being directed by Ms. Jeanne Kobuszewski, instructor of Drama and Speech. Ms. Kobuszewski

Beginning on Monday, Jan. 7 1974, offices will open at 8:00 a.m. and close at 4:00 p.m. Each staff member will have a one-half hour lunch period. However, offices will continue to be open during the period between 12:00 noon and 1:00 p.m., Monday through Friday.

AAUW Will Show Jan. Film

The American Association of University Women will present a movie entitled, "How To Make A Woman" on January 22, Tuesday evening at 7:30. It will be shown in the lounge of the Wesley Foundation.

The film will lead off the study group on Woman: searching for self. "How To Make A Woman" is a dance-drama depicting some of the conflicts women face in trying to fulfill their social-sexual role. The message is strong and clear. The presentation ran for six months in Cambridge, Massachusetts and was filmed in a church by Polymorph Films, Inc.

After the hour-long film, a discussion will follow. Everyone is invited to attend even if not interested in joining the study group.

Insurance Enrollment Available To Students

Enrollment for the Glenville State College Student Accident and Sickness Insurance Plan will be open at the beginning of the second semester for those new students and others who wish to have this protection.

The cost of this coverage is prorated at \$23.00 and is effective through the summer until August 20, 1974.

Application cards and brochures may be picked up at the Office of Student Affairs. Those enrolling during the first three weeks of the semester will not be required to have a medical examination to accompany the application.

who hails from Hanover, Kansas, received her B.A. in theater from Marymount College in Salena, Kansas, and her M.A. in theatre from Central Michigan University. Her theatre credits include directing *Come Blow Your Horn* and *Memos and Encounters* at GSC.

She has also directed such productions as *Memorial Day*, *Wizard of Oz*, *The Subject Was Roses*, *Impressions of an Actor*, *The President*, *Medea*, *Never Too Late*, and *Only an Orphan Girl*.

Bevelander Performs Two Original Selections

The Department of Music at Glenville State College presented the Faculty Recital of Pianist, Brian Bevelander at 8 p.m. on Jan. 10, 1974 in the auditorium. Mr. Bevelander heralded his inspiring performance with two original selections: "Scherzo" and "Prelude" composed in 1965. The remainder of his evening repertoire was comprised of "Sonata in G Major Op. 14 No. 2, Beethoven; Romance (from Suite No. 2), Rachmaninoff; Prelude and Fugue in E Flat, J. S. Bach; and Scherzo in B Flat Minor Op. 31, Chopin. Mr. Bevelander was accompanied by Ms. Jackie Stricker on the Rachmaninoff selection.



Pictured are thirteen of the twenty-three seniors named to Who's Who Among Students in American Colleges and Universities.

Twenty-three Are Honored By Selection In Who's Who

Twenty-three seniors will represent Glenville State College this year in *Who's Who Among Students in American Colleges and Universities*. Those students who have been selected are: George Brumfield, David Bush, Vince Butta, Michael Calhoun, Linda Canterbury, Tommy Carper, Deborah Davis, Mariann DeRico, Larry Godfrey, Pamela Hardman, Harold Hoeltzel, Patricia McGowan, Linda Mathews, Dave Merchant, Sharon Miller, Sheila Nutter, Joyce Paugh, Philip Reale, Barbara Shomo, Terry Smith, Brian Taylor, William Thomas, and Robin White.

Mr. Brumfield, a physical education major from Wayne, has been active in sports. He has played one year with the football teams and 2 years in baseball. He is an athletic trainer and has been a member of the Veteran's Club.

Mr. Bush, a social studies major from Spencer, was a former Scholastic Officer and Model Pledge of the Theta Xi fraternity and a President of the Historical Society. He is a member of the Alpha Delta Epsilon Business fraternity and was on the Academic Affairs Committee. David was awarded the Newspaper Agency Corporation Scholarship Award.

Mr. Butta, is a physical education major from Charleston. He has been active in football at GSC.

A music major from Doddridge county, Michael Calhoun is president of the Literary Society and Editor of the Music Alumni Newsletter *For*. He has had poetry published by the National Poetry Press and has performed recitals of his own musical composition. Also, he has been or is a member of the Historical Society, the Glenville State College Marching, Stage and Concert Bands, the Collegiate 4-H Club, the SEA, Music Educators National Conference, and the Glenville Methodist Church choir.

Linda Canterbury, a home economics major from Elkins, is a member of Phi Delta Pi.

Tommy Carper, a business administration major from Glenville is a member of the Theta Xi social fraternity which he served as president.

A home economics major from Clay, Deborah Davis is a member of

Sigma Sigma Sigma social sorority. She is vice-president of the Student Congress and chairman of the Activities Committee. She has been on the Dean's List and is student representative to Alumni Association.

Ms. Mariann DeRico, a business administration major from Buckhannon, is a former member of Student Congress, Alpha Delta Epsilon and Ladies of the White Rose.

Larry Godfrey, a biology major from Granville, has been involved in molecular genetics research for three years. He has been president of Chi Beta Phi, the national science honorary fraternity and was delegate to the national convention. He is a member of the Centennial Committee.

Ms. Hardman, an English major from Glenville, has consistently made the Dean's List and is a member of the Literary Society.

Mr. Hoeltzel, a physical education major from Paconian Springs, Va., is a member of the Theta Xi fraternity. He has played football for Glenville and has been on the Mercury staff.

Ms. McGowan, an elementary education major from Buckhannon, was house manager and corresponding secretary of Delta Zeta sorority. Patricia has held the office of secretary for the SEA and 4-H Collegiate Club.

A social studies major from Vienna, Linda Mathews is a member of Phi Theta Kappa, Kappa Delta Pi, the Ohnimgohow Players, the GSC-Historical Society and the Academic Affairs Committee.

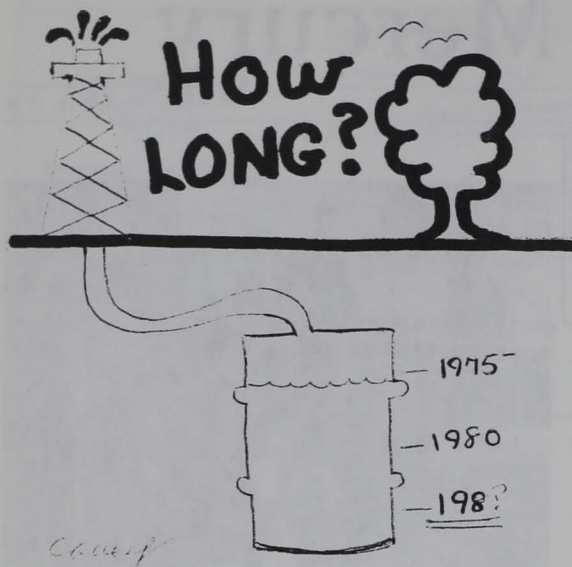
Dave Merchant, while at Morris Harvey College, was a member of the Sigma Phi Epsilon fraternity, vice-president of his freshman class, and All-Tournament (soph.) and All-Conference (jr.) in basketball. After transferring to Glenville State, he has become a Resident Assistant, a Varsity basketball starter and is on the Student Life and Welfare Committee. Dave was also Drum Major for the GSC Marching Band this year.

An early childhood major from Spencer, Sharon Miller was past treasurer and is currently president of the Student Education Association. She is also historian of the Kappa Delta Pi, the National Education Honorary Society.

(cont. on p. 3)



Pictured above are the recently announced cast members for the Speech department's winter production of *Picnic* by William Inge.



'Candle Burns At Both Ends'

As we return to Glenville once again for another semester of college, most of us are wondering about the energy crisis: whether it is real, how it is going to affect us as students, and what we can do about it.

Is it real? Many have accused the nation's administration of playing-up a small shortage in order to cover up a "cover up." This would be to relieve the pressure of possible impeachment or resignation. Also the oil companies have been accused of "creating" the shortage to boost their profits. However, even if these accusations are entirely correct, the people should be concerned about the supply of fossil fuels and they should prepare for the day when there are no more. Those vast wells of oil even in the Middle East are not infinite in their dimensions.

As students, the decrease of a power supply with the increase of prices will hurt those who were not so rich in the first place. Picnics at Cedar Creek and long, fun trips to away ballgames and tournaments may have to be reduced or replaced by roasting marshmallows in the fireplace and listening to games over the radio. Students who live far away will be going home less and less, and those who stay up here will have to forfeit movies at Clarksburg and shopping in Charleston. Overall life in Glenville and at the College will not be changed nearly as much as a larger rural university and in city schools. All in all, Glenville's pace is slow already, and a slowdown in the use of automobiles might not ever be noticed that much.....until we run out altogether.

What can we do about it? Standards have been set to reduce the use of lighting and heating facilities at the college and in many businesses in town. As students, we can supplement this with less joy-driving and by walking to school if one lives in town. Have your cars serviced regularly and make sure your tires are inflated correctly. Part of the population is already following these ideas. The people who are not will probably never be affected by an article such as this and will cut down on their use of energy only to obey newly passed laws.

For those students, faculty and staff who are following energy saving steps, the important thing is to stick with them. Many will gradually fall back into the fuel guzzling rut of taking unnecessary drives and leaving lights on. Some government officials, as well as a great portion of our population, believe that the crisis is a hoax. Well, just buy the biggest candle you can find. Pretend it is all of the oil, gas, and coal supplies in the world. Light it, and watch the wick slowly burn through the wax. Eventually, sooner or later, there will be no more candle to burn.

Donnie Cuppett
Assistant Editor

THE GLENVILLE MERCURY The Student Newspaper

Published weekly and entered as second class mail at the Post Office at Glenville, W. Va. 26351. Subscription - \$3.50 a year.

Editor-in-Chief.....Sherri Catalano
Assistant Editor.....Donnie Cuppett
News Bureau Director.....Steve Bويل
Sports Editor.....Dave Bunton
IBM Operators.....Kim Jones, Sandy Roberts, Kay Bunton
Typists.....Deloris McKown, Anita Toth
Circulation Manager.....Pat McKinney
Photographer.....Chuck White, Lou Covey
Advertising Manager.....Becky Potasnik
Advisor.....Yvonne King

Standing Ovation Given People, Inc. Road Show

People Inc., the special projects road show ended last semester with a standing ovation from 1,000 students at Ripley High School.

The group traveled hundreds of miles to and from various area high schools, presenting *Memos and Encounters* of oral interpretation supplemented with special effects such as music, slides and special lighting.

Ms. Jeannie Kobuszewski, instructor of speech and drama, directed the group comprised of: Dean Stout, Dave Brown, Barbara Stemple, Sherri Catalano, Roberta Luikart and Celia McCoy. Kim Johnson served as lighting director for the show.

Delta Zeta

The sisters of Delta Zeta held a Coke Party from 5:30 to 6:30 Jan. 15, 1974 for those rushees that were eligible for Formal Rush. The party is a take-off on the Gay 90's era. Hades to Heaven is the theme of the DZ Theme Party scheduled for Mon. Jan. 21, 1974, from 9:30-11:00 p.m. The Delta Zeta individual rush activities will be high-lighted by the Rose Preference Party Thursday night, Jan. 24, 1974 from 7:00-7:45 p.m. All parties will take place at the Delta Zeta House, 305 East Main Street. Kathy Fluharty and Peggy Fitzsimmons assumed the positions of House Manager and Assistant House Manager for the Delta Zeta House on Jan. 9, 1974. Brenda Kinder has been appointed Courtesy Chairman

Tri-Sigma

The Delta Alpha Chapter of Sigma Sigma Sigma is planning a trip to their National Headquarters, Walton House in Woodstock, Va. Through fund-raising activities the girls have almost reached their financial goal to make the trip. One such activity to raise money will be a chili dinner on Feb. 20, 1974.

Alpha Sigma Alpha

The sisters of ASA are in the process of planning a Sweetheart Dance for Feb. 15, 1974. A King and Queen will be chosen through the process of a penny-a-vote. Debbie Bucas, Alpha Sigma Alpha Field Representative, is planning to attend the sorority's Theme and Preference parties.

Tau Kappa Epsilon

The Fraters of Tau Kappa Epsilon began their semester with a meeting last Sunday, Jan. 6, 1974. Smokers for prospective pledges are being planned. A house party for the fraters and their guests is tentatively scheduled for Jan. 26. A complex stereo outfit will soon be raffled off for \$1 per ticket.

The Order of Diana will hold a hot dog sale in the dorms in the near future.

Senator C. Percy To Attend Seminar

Dr. Joe Darnall and two students, Miss Barbara Groves and Mr. Jeff Garton, will represent Glenville State College at an Ivor F. Biarsky memorial seminar in Charleston on January 22-23, 1974. Senator Charles Percy of Illinois will be the principal speaker in this lasting memorial of striving for a better government for our state.

The representatives will be staying at Morris Harvey College and they will be able to meet individual legislators and Senator Percy at different times for discussion.

Kenny Smith attended last year when it was sponsored by the state AFL-CIO. Jay Rockefeller and the state's House Speaker and Senate President were among those attending and speaking at the seminar.



Marlena Smith shows prospective rushees various display items of the Delta Zeta booth at the Joint Rush Party held in the Ballroom, Jan. 13.

Formal Rush Held, Schedule Planned

Sunday night, January 13, 1974 at 7:00 p.m., the Spring Formal Rush period began with a Joint Rush Party organized by the Panhellenic Association on the Glenville State College campus. The purpose of this activity was to provide an evening of sorority orientation for all interested girls and/or prospective rushees. The three national sororities represented at the activity were Alpha Sigma Alpha, Delta Zeta, and Sigma Sigma Sigma.

In her introductory comments, Norma Rexroad, President of Panhellenic Association, previewed some of the essential by-laws concerning formal and open rush:

1. There will be two formal rush periods: Fall and Spring, each lasting approximately two weeks. Fall Rush will begin the fourth week of the first semester. Spring Rush will begin the first Sunday following registration for the second semester. Formal parties, three in number, (with a theme, and favors) are to be used only during the two formal rush periods.

2. Open rush will be in effect at all times except for each two week period of formal rush.

3. To be rushed and/or pledged a girl must have an accumulative of 12 hours credit and a 2.0 minimum accumulative grade point average. A \$1.00 fee will be charged by Panhellenic for each rushee to be eligible for pledging during formal rush. It will be collected at the Joint Rush Party.

4. During regular scheduled rush periods women desiring to pledge a sorority must sign and indicate their preference in the office of the Dean of Women on the second Thursday evening (January 24, 1974) of the rush period from 9:00 to 10:00 p.m.

5. Each sorority will prepare and submit the bids for its prospective pledges to the Dean of Women on the second Friday morning of the two rush weeks at 9:00 a.m.

6. The Dean of Women will notify each prospective pledge who has been given a bid by a sorority; and, the prospective pledge may accept a bid in the Office of the Dean of Women on the second Friday afternoon ending the rush period, at 1:00 p.m. to 4:00 p.m.

10. A silence period (a period of time during which no communication is permitted between sorority women and rushees) will be observed by all sororities from 5:00 p.m. the

day of preferential parties until 4:00 p.m. the following day when each sorority will meet to recognize their pledges.

11. To assist the sororities, all invitations to all rush parties are to be RSVP at the Panhellenic Office (Office of Student Affairs).

12. A list of all the rushees is to be turned in to the Panhellenic Office by noon on Monday following the joint rush party. The girls on this list are the only girls eligible for rush during the two weeks of formal rush.

Schedule of Events for Formal Rush: Joint Rush Party-Jan. 13, 1974 (7:00 in the Ballroom); Delta Zeta Coke Party-Jan. 15, 1974 (5:30 to 6:30 at DZ House); Alpha Sigma Alpha Coke Party-Jan. 16, 1974 (9:30 to 10:30 3rd Floor C-wing lounge); Sigma Sigma Sigma Coke Party-Jan. 17, 1974 (4:30-5:30 in 2nd Floor C-wing lounge).

Delta Zeta Theme Party-Jan. 21, 1974 (9:30-11:00 at the DZ House); Sigma Sigma Sigma Theme Party-Jan. 22, 1974 (5:00-6:30 in the Ballroom); Alpha Sigma Alpha Theme Party-Jan. 23, 1974 (9:30-11:00 in the Ballroom); Alpha Sigma Alpha Preference Party-Jan. 24 (6:00-6:45 in the Ballroom); Delta Zeta Preference Party-Jan. 24 (7:00-7:45 at the DZ House); Sigma Sigma Sigma Preference Party-Jan. 24 (8:00-8:45 in the Wesley Foundation.)

Preparations Underway For Childbirth Classes

Preparation for childbirth classes will begin Tuesday, January 29th, at the Assembly Hall of the Recreation Center. The classes will be held from 7-8:30 p.m. for approximately eight weeks. The purpose of the classes is to teach the Lamaze breathing techniques and relaxation exercises to aid expectant parents during labor and delivery; and also to include information on breastfeeding and child care. Women are asked to begin the classes during their sixth month of pregnancy and husbands are encouraged to attend. A nominal fee will be charged. For further information and to register, please call 462-5463 or 462-7396.

All Photographers please meet in the darkroom Monday for a conference with Mr. Nichols.

Who's Who Named

(cont. from p. 1)

Ms. Nutter, a home economics major from Jane Lew, is in the Delta Zeta sorority and Phi Delta Phi, Home Economics honorary.

Joyce Paugh, a library science major from Buckhannon, was the treasurer of the Delta Zeta sorority and is the chaplain, (formerly the treasurer), of Ladies of the White Rose. She is the 1973 Lambda Chi Alpha Sweetheart and was the 1972 Junior Homecoming Princess. She has been involved with the intramurals and Miss GSC Pageant.

Mr. Reale, is a history and political science major from Glenville. He is the president of the Student Congress and has been past Prytanie of the Tau Kappa Epsilon fraternity. He has also been named to the Task Force of the Board of Regents.

Barbara Shome, an elementary education major from Gassaway was the 1973 Homecoming Queen. She has been recording secretary of Sigma Sigma Sigma social sorority.

An elementary major from Vienna, Terry Smith is president of the senior class, and is a member of Sigma Sigma Sigma sorority. Terry is past treasurer of Tri-Sigma.

Mr. Thomas, a math major from Parkersburg, is a member of the Theta Xi Fraternity.

Robin White, a social studies major, is from Culloden, WV. She is a member of Sigma Sigma Sigma sorority and a senator of the Student Congress.

Student Teachers Urged To File Form

The Placement Office has the following releases: Credential Files—Students who have not filed please get one filled out and returned to the Placement Office as soon as possible.

You will find a green form in the office to be completed immediately. Anyone in Student Teaching who has not completed one please do so. Your phone number is especially important. This form is also used for temporary lists for county superintendents in West Virginia and other states.

Starting February 1 interviews begin. The Placement Office will compile a list and have it published in the *Mercury*. The list will be given Educ. 490 Instructors and copies available at the Placement Office for any May-August graduate. The office will be open on Saturdays from 9-12 beginning February 23 through the close of school for student teacher's convenience.

We have several applications and information for summer employment (off campus) at camps, national parks, restaurants, beach areas, and others. Most of these jobs require that applications be filed in February.

Sumpter To Represent Tri-Sigs At Woodstock

Miss Pam Sumpter is representing Delta Alpha chapter of Sigma Sigma Sigma, as well as GSC and the state of West Virginia, this weekend at Tri Sigma's national headquarters in Woodstock, Va.

Miss Sumpter is one of the five people selected from all over the U.S. to meet at Walton House to exchange ideas and to discuss issues concerning Tri-Sigas nationwide.

Miss Sumpter was chosen as one of the five Collegiate Advisory Board delegates recently as a result of Delta Alpha's "Chapter Excellence Award." She has served as recording secretary and president of Sigma Sigma Sigma sorority.

Miss Sumpter was also the 1973 Glenville State College Homecoming senior princess.



Philip Reale

Reale Involved With Task Force

Philip Reale has been appointed to the W. Va. Board of Regents task force concerned with Continuing Education and Community Service. This is one of two task forces established at the Dec. 4 meeting of the Board of Regents.

Phil, the son of Mr. and Mrs. Patrick Reale of Glenville, is a senior majoring in History and Political Science. The current student body President of Glenville State, he also served as Prytanis of the Tau Kappa Epsilon fraternity, among other activities. Mr. Reale has served on the Board of Regents throughout the 73-74 school year.

Each 20-member task force consisting of lay citizens, legislators, and professional educators will study, analyze and make recommendations to the Board for future directions and programs.

Both task forces are a result of commitments made by the Board in its PLAN FOR PROGRESS published in Dec. of 1972.

Concerning Continuing Education and Community Service, the PLAN FOR PROGRESS outlined the premise that "...higher education in West Virginia must be planned and developed with the recognition that education is properly a continuous, life-long process achieved through flexible and diverse approaches."

This commitment broadens the traditional charge to higher education in West Virginia from one of providing higher education opportunities to the youth of the State to providing opportunities for adult citizens who seek to develop additional skills or continue the life-long learning process.

The West Virginia Board of Regents has charged the Task Force on Continuing Education and Community Service to:

1. Examine the entire spectrum of existing programs and activities in Continuing Education and Community Service in West Virginia and elsewhere;
2. Assess their relative significance for the present and future educational needs of the citizens of West Virginia; and
3. Recommend to the Board of Regents appropriate directions for further development of Continuing Education and Community Service offerings by West Virginia's colleges and universities.

In regard to Non-Traditional Study the PLAN FOR PROGRESS enunciated the principle that higher education in West Virginia must be of a variety of types, achieved through flexible and diverse approaches. One of the new dimensions for West Virginia Higher Education identified in the Plan was the need to develop flexible time-space options to serve most effectively the varying academic objectives, extra-educational commitments and personal characteristics of students.

VD Must Be Stopped Here, In Glenville and the Nation

Venereal Disease has reached epidemic proportions in the United States and whether we choose to accept it or not, this disease is prevalent right here on Glenville's campus. Unless drastic steps are taken to curb this epidemic it will soon become one of the biggest health problems in the nation, according to U.S. public health officials.

The two most common venereal diseases in this country are syphilis, 500,000 reported cases, and gonorrhea 2½ million reported cases, and both are highly communicable.

Information released by the U.S. Department of Health, Education and Welfare states that young persons under age 25 are responsible for the greatest percentage of reported venereal disease cases. It is contracted by one teenager every nine minutes. The rate is rapidly going up for those 20-25 years of age.

Syphilis is caused by a germ called a spirochete (treponema pallidum) which can attack and damage any tissue or organ of the body, especially the brain, heart, liver, and bones. Almost 4000 people in the U.S. die each year as a result of syphilis.

In the female there are usually no symptoms of syphilis in the primary stages. The first sign may be a painless sore called a chancre which appears at the point where the spirochetes enter the body, usually on or around the sex organs. In the male 2-6 months after the disease is contracted a chancre will appear or a rash may show up on such places as the palm of the hand or sole of the feet. In both cases the rash or sore will go away even if the person doesn't receive treatment. This leads to the misconception that the disease is cured. In a years time the stages of secondary syphilis begins. The rash may reappear, and in both sexes there could be a loss of hair. After a year syphilis becomes latent in the individual and he can no longer infect others; but the germs remain in the body.

The complications arising from syphilis are: still born babies, if the female is infected at the time of her pregnancy, deafness, blindness, damage to all major organs of the body, destruction of bone cartilage, arteries and blood vessels, mental illness, and paralysis.

Gonorrhea is caused by a bacterium called the gonococcus (neisseria

gonorrhoea). Many people under-rate the seriousness of this disease. In fact, it may cause sterility, blindness, arthritis and even brain damage.

Twenty percent of females contracting this disease experience pains in the abdomen and unusual discharges. 80% have no symptoms at all. Many times gonorrhea isn't discovered until it has caused serious damage.

In the male, gonorrhea has definite symptoms that appear within 30 days of contracting the disease. In 2-8 days there is burning during urination and urethral discharge.

Venereal disease can only be detected and cured by a physician. If an individual has any of the symptoms or thinks he may have contracted the disease, he should contact his doctor or health department immediately. The sooner the disease is found, the quicker and easier the cure.

According to Dr. Manley, there are several facilities in Glenville that offer diagnosis and treatment for venereal disease.

The college health services under the direction of Dr. Manley is open every school day from 9-11 a.m. Off campus there is the Gilmer Clinic on Main Street, the Gilmer Medical Clinic on Walnut Street, The Court Street Clinic and the Family Planning Clinic of the Public Health Department.

Employment Rep. To Visit

On February 6, 1974, Mrs. Ann Harvey, Employment Counselor from the Department of Employment, Security will be visiting the Glenville Branch Office of the Division of Vocational Rehabilitation. During her visits to Glenville, Mrs. Harvey hopes to help DVR clients and other interested area residents obtain employment in the Clarksburg/Weston area. Anyone wishing to talk with Mrs. Harvey regarding possible employment should call 462-5390 for an appointment or stop by the DVR office and pick up an application. The success of this program will determine whether or not Mrs. Harvey will return to Glenville in successive months. Community support is vital.



Dr. Harry B. Heflin

Dr. Heflin Selected As Vice Chancellor

Dr. Harry B. Heflin, former president of Glenville State College has been appointed Vice Chancellor of the West Virginia Board of Regents. His term begins February 1, 1974.

Dr. Heflin who was born in Pennsylvania, WV, graduated from GSC in 1937. He obtained his Masters degree from George Peabody College for Teachers and his Ph.D. from the University of Pittsburgh. Besides teaching in public schools and colleges in West Virginia, Dr. Heflin also taught at a college in North Carolina.

Other achievements of Dr. Heflin besides being President of GSC for 17 years include Vice President for Administration and Finance, and Acting President at West Virginia University. He was also director of the Bureau of Educational Research and Services and Dean of the Teachers College at Marshall University.

Dr. Heflin's term as Vice Chancellor will end with his retirement from the state system of higher education.

"New Colony Six" Is Scheduled Here

The Lyceum Committee has announced that a performance by the group "New Colony Six" has been scheduled for Saturday, January 26, 1974 at 8 p.m. in the auditorium.

The "New Colony Six" has existed as a group for more than eight years, and in that time has grown in many ways. "New Colony" has developed a style of music all its own, which has been totally accepted by the record-buying public. In the last seven years, the group has had over fifteen hit records on the national charts.

"New Colony's" stage show is entirely original. It consists of many of the group's best recordings, plus new and exciting material written by its individual members. The show includes soft ballads, medium and hard rock, and emphasizes well-performed music and excellent four-part harmonies. The lead vocals are alternately sung by the group's four vocalists (Bob Morton, Ron Anaman, Bill Herman, and Skip Griparris, with Jerry Kollenburg on lead guitar), each fully capable of being the main soloist of the group.

It is both visually exciting and musically fulfilling.

There will be no tickets sold for this performance. Admission will be by I.D.

A Christmas Party was given for the Day Care Center children on December 17, 1973 in the Ballroom. The Panhellenic Council sponsored this event that was complete with refreshments, songs, and gifts presented by Santa Claus himself.



Double parked!!! This is what the Clark Hall parking lot looked like on the first day of second semester—and then some cars were left out!!!



Dave Merchant
Sr. 3 yr. letterman
Clarksburg

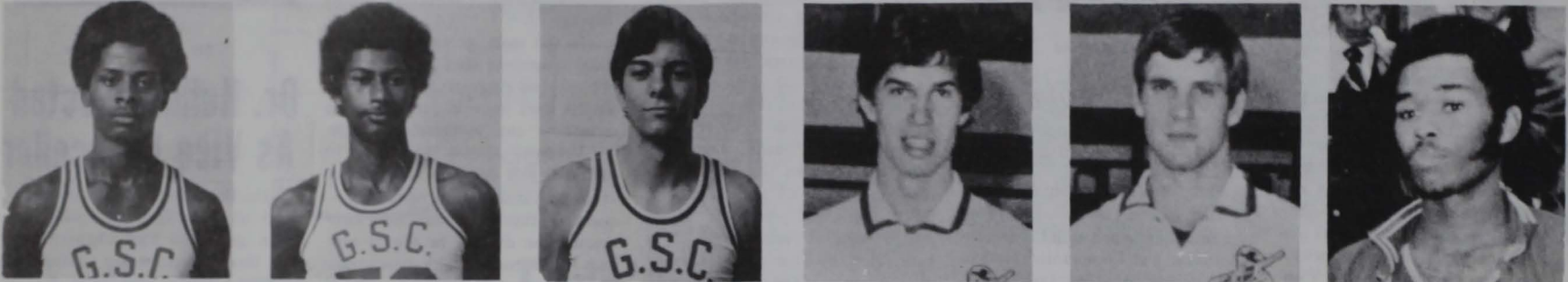
Jeff Jackson
Sr. 1 yr. letterman
Purcellville, Va.

Tom Lilly
Sr. 1 yr. letterman
Glenville

John Hudson
Junior 1 yr. letterman
Ripley

Roger Caudill
Junior
Dunbar

Eric Makle
Jr. 1 yr. letterman
Aquasco, Md.



Rushon Colin
Sophomore
Hinton

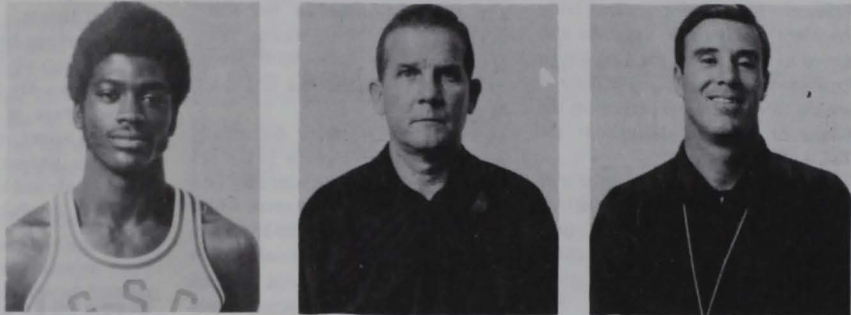
Randy Datcher
Soph. 1 yr. letterman
Indian Head, Md.

Arnie David
Freshman
Glen Burnie, Md.

Mark Elder
Sophomore
Warren, Ohio

Bob Hardman
Junior
Glenville

Will Stewart
Freshman
Waldorf, Md.



Earl Hawkins
Sr. 3 yr. letterman
Brandywine, Md.

Jesse Lilly
Head Coach, 9 yr.
145 Wins, 88 Loses

Tim Carney
Assistant Coach
GSC

Pioneers Defeat 'Golden Bears'

The Glenville Pioneers shot a blistering 51.5 percent from the floor as they hit on 34 of 66 shots attempted to whip the W.Va. Tech Golden Bears 78-61 before an unenthusiastic, sparse crowd at the Glenville gymnasium. The G-men of Jesse Lilly spurred to a quick 22-4 lead and then suffered a small letdown midway through the first half to take a 38-29 lead to the locker room at halftime. Pacing the Pioneers at halftime were Earl Hawkins with 13 points and Wil Stewart with 10 points.

In the second half Tech stayed to within ten points of Glenville until there was about 10 minutes to go in the half. The Pioneers then spurred for 6 quick points and put the game out of reach.

Leading the Pioneers in scoring was Earl Hawkins with 27 points on 11 field goals and 5 free throws. Also in double figures were Wil Stewart with 18 points on 9 field goals, and Dave Merchant with 11 points on 4 field goals and 3 free throws.

Good Luck In '74' Pioneers!



Glenville players who made the Marietta all-tournament team are l-r: (45) Earl Hawkins, (30) Dave Merchant and (33) Will Stewart.



Earl Hawkins was voted Most Valuable Player in Glenville's championship victory at the Marietta tournament.

Statistics . . .

PLAYERS NAME	SHOTS			FREE THROWS			REBOUNDS	TOTAL POINTS	TOTAL AVERAGE REB	TOTAL AVERAGE PTS
	SA	SM	PCT	SA	SM	PCT				
Hawkins, Earl	221	106	47	38	25	65	149	237	12.4	19.7
Stewart, Will	105	48	45	14	6	42	71	102	6.4	9.2
Datcher, Randy	79	39	49	30	13	43	39	91	4.3	10.1
Merchant, David	83	73	39	40	26	65	72	172	6.0	14.3
Makle, Eric	71	26	36	19	11	58	77	63	5.5	5.2
Hudson, John	91	37	41	21	8	38	59	82	5.9	8.2
Bartley, Darryl	2	1	50	7	5	71	2	0	0.4	1.4
Colin, Rushon	25	10	40	16	14	88	10	34	1.0	3.4
Caudill, Roger	10	2	20	6	5	83	7	9	0.8	1.1
Lilly, Tom	2	1	50	3	2	66	2	4	0.4	0.8
Jackson, Jeff	0	0	0	0	0	0	0	0	0	0
Hardman, Bob	4	0	0	0	0	0	0	0	0	0
David, Arnold	7	3	43	0	0	0	5	6	2.5	3.0
Elder, Mark	1	0	0	0	0	0	0	0	0	0
Dye, Alan	11	3	27	0	0	0	4	6	0.6	1.0

Grapplers Open Season

The Glenville State wrestling team opened its season on a sour note, losing a dual meet to Marshall University 30-9. Jim Neal and Dan Clevenger recorded victories for the Pioneers with Clevenger winning with a pin. Marshall had a 6-3 lead after the first three matches and then won the next six matches before Clevenger recorded his victory in the unlimited division.

Scoring in the match went as follows: 118 lb. class; forfeit to (MU) 6 points; 126 lb. class, Hanson (GSC) vs. Holliday (MU) draw; 134 lb. class, Neal (GSC) decisioned Oyster 3 points; 142 lb. class, Cornell (MU) decisioned Pierson 3 points; 150 lb. class (MU) forfeit 6 points; 158 lb. class, Carr (MU) decisioned Lewis 3 points; 167 lb. class Thomson (MU) decisioned Mills 3 points; 177 lb. class, Albrink (MU) decisioned Welch 3 points; 190 lb. class White (MU) decisioned Brum 3 points; Unlimited Clevenger (GSC) pinned Lemon 6 points.

The wrestling team journeys to Concord for a match this Saturday at 7:00 p.m.



Jimmy Neal is shown here before his match last Saturday.



Dan Clevenger is receiving instruction from Coach Adolfsen.

- Jan. 19 Concord 7:00 H
- Jan. 22 Fairmont 7:30 A
- Jan. 26 Frostburg 12:00 A
- Jan. 30 A-B 7:00 A
- Feb. 2 Concord 7:00 A
- Feb. 16 West Liberty 1:00 A
- Feb. 20 A-B 7:00 H
- March 1-2 WVIAC Tourn. Charleston

Next week in the sports section there will be a new series on Glenville's all-time All Conference performers. There will be an article on the Pioneer football Captains for 1974. Also, there will be write-ups on basketball, wrestling, and bowling, plus a feature on two of Glenville's basketball players.

GLENVILLE PIONEERS STOP D & E, 69-55

The Glenville Pioneers upped their over-all won-lost record to 7-5 with a 69-55 victory over a scrappy Davis and Elkins quintet last Saturday night. The Pioneers were led by high flying Earl Hawkins who collected 11 rebounds and 33 points. Hawkins scored on 14 field goals and 5 of 6 foul shot attempts. Also getting into the scoring act were senior guard Dave Merchant who ripped the cords for 16 points and Will Stewart a 6'3" freshman who added 12 points.

Most of the game was a close hard fought affair with neither team maintaining more than a 6 point advantage. Midway in the second half Hawkins begun to dominate the ball game. Hitting from the corner and on the inside, Hawkins scored 27 points in the second half. Glenville steadily increased their lead until it reached the final score of 69-55.

Randy Datcher, Glenville's starting center at 6'7", reinjured his knee early in the contest and saw limited action.

Arnie David came off the bench and provided the Pioneers with 6 quick points and good defense. Scoring for Glenville were Earl Hawkins 33; Dave Merchant 16; Will Stewart 12; Arnie David 6; and Randy Datcher 2.

All men interested in playing baseball at Glenville State College should report to Head Coach Jerry Milliken Monday, Jan. 21 in the little gym at 3 p.m. or notify him at his office.



Dave Merchant fights for the ball against Fairmont in GSC's 73-53 loss.



"1-2-3 hop," is the theme as Glenville's John Hudson controls the ball against Shepherd.



Will Stewart rebounds against Tech. (34) is Eric Makle and (14) is Arnie David.

Intramural Roster

Intramural rosters for flight II are: Clutches Heroes - Mark Toney, John Lemon, Randy Hunt, Marty Patrick, Glenn Koutins, Randy Smith, Frank Demarco, Dave Cunningham, Steve Gilchrist.

Fire Dept. - Tim Butcher, Sam Arnold, Bob Radabaugh, John Perkins, Steve Stalnaker, Gary Wolfe, Pat Joyce, Mike Sleeth, Robbie Morrison.

Crushers - Wes Denham, Dave

Neuner, Irvin Braniff, Stu Deem, Steve Deem, Dave Sapp, Tom Harvey, John McCoy, John Pratt, Ralph Robison, Keith Murdock.

TKE II - Luther Hanson, Steve Lewis, Rick Pierson, Mike Snyder, Art Ausbery, Phil Reale, Les Face-myer, Rudy King, Jim Neal, Ken Payne.

Vulcluse Vultures - Ted Williams, Bernie Buttrey, Mike Truex, Pat Boyles, Robbie MacDonald, Larry Wolfe, Eddie Wilson, Rick Lemley, Danny King, Gary Dentley, Bob Beckett.

Vets - Larry Woodyard, Roy Mace, Jack Teter, Buddy Varrell, Denny Fitzpatrick, Steve Rice, George Brumfield, Andy Henry, Mike Bumgardner, Gary Canterbury, Steve Wiseman, Scott Anderson.

Dilligaf - Ted Daughtery, Dario Perine, Sam Sommerville, Jim Scott, Mike Kerns, Ted Richards, David Moses, Mark Sevins.

Glenville Greasers - Roger Full, Herb Curry, Dale Wigal, Russell Stump, Richard Conrad, Tim Harper, George Johnson.

Muckraking

by Dave Bunton

Here we go again!!! Welcome back to GSC land, yeah you too Rookie. I hope everybody had a good holiday vacation.

The Pioneer basketball team is experiencing an up and down season. It seems as though every time the Lilly-men are starting to become a consistent team, an injury or a let down in team play helps produce a loss. In the Marietta tournament over the holidays, the Pioneers played their best basketball of the season. Earl Hawkins provided the leadership and scoring as the G-men defeated a hot-shooting Sacred Heart team 72-71. Dave Merchant and Rushon Colin also helped the Pioneer cause with their scoring. Colin added eight foul shots in the final half to ensure the victory. The following night Glenville played a poor floor game but still had enough power to defeat a stubborn Heidelberg team 56-52. Hawkins, Merchant and Wil Stewart provided the scoring punch. For his efforts, Hawkins was voted the tournaments Most Valuable Player. Stewart and Merchant were also named to the all-tournament team.

Injuries have played a key role in the Pioneer fortunes. John Hudson was injured against Shepherd when his knee gave out on him. Hudson had been playing well and his loss has been noticed, especially on the defensive boards.

Randy Datcher has also been hampered by a knee injury. Here's hoping that Hudson and Datcher can be back in the line-up before tourney time.

Glenville showed signs of their old excellence against Davis and Elkins. Hawkins was back in his old

RECENT GRADUATES DEVISE CURRICULUM

Two GSC graduates Patricia Brannon, class of 71 and Linda Ball, class of 70 have assisted in the organization of the Logan County Physical Education Curriculum.

The book describing the elementary Physical Education Curriculum

was written in part by Ms. Patricia Brannon. Ms. Linda Ball did all of the illustrating in the booklet. The book includes everything from the Philosophy to a very detailed description of each individual seat in of Physical Education. A general analysis of elementary school children is also included in the book.

position as chairman of the board. "Hawk" scored 33 points and had 11 rebounds. Dave Merchant added 16 points and Wil Stewart chipped in 12 markers. Arnie David a 6'2" freshman came off the bench and added 6 points from long range. Maybe David can provide the long range scoring punch the Pioneers lack.

The Glenville wrestling team opened their 1974 season with a loss to Marshall University by the score of 30-8. Dan Clevenger and Jimmy Neal were the only winners for the Pioneer matmen. One must remember that Marshall is an NCAA university team. You can still look for the wrestling team coached by Whitey Adolfsen to have a good year, especially in conference play.

Last week saw the Pioneer's lose a heartbreaker to the Shepherd Rams by the score of 72-69. At one stop the Pioneers were down by 17 points but they fought back to close within 1 point to lose the ball out of bounds with 14 seconds to go.

One night later the Pioneers dropped a 73-53 decision to the Fairmont Falcons. The Falcons are currently leading the NAIA in basketball. And I said Fairmont would be down this year!!

Look for the conference tournament to be a wild affair this year with 5 or 6 teams vying to knock off Fairmont.

I was extremely sorry to hear wrestler Steve Lewis broke his leg the other day in practice. Get well quick Steve, we're pulling for you.

See ya next week. Three no-trump, Rookie.



All-American Scotty Hamilton of Marietta, Ohio.

Hamilton Added

Glenville's All-American football player, Scott Hamilton has been hired by Glenville State College as Admissions Counselor.

As Admissions Counselor, Mr. Hamilton, a December graduate, is somewhat a public relations man for the college. He will be counseling incoming students and helping with admissions. At designated times during the school term, Mr. Hamilton will also visit high schools on Career Day as a GSC representative.

While a student, Hamilton showed outstanding ability as a linebacker and defensive halfback. For three of the last four years he has been on the WVIAC All Conference defense team. This year the Conference chose him as the Defensive Player of the Year.

Mr. Hamilton, a 1968 graduate of Marietta Senior High School is the son of Mr. and Mrs. F. S. Hamilton of Marietta, Ohio. While a student at Glenville, he was a business administration and physical education major.

There will be a wrestling match between Glenville and Concord this Saturday at 7 p.m.

Glenville State College will play W. Va. Wesleyan at Buckhannon, Saturday at 8:00 p.m.

DICTIONARIES WEBSTER

Library size 1973 edition, brand new,
still in box.

Cost New \$45.00

Will Sell for \$15

Deduct 10% on orders of 6 or more

Make Checks Payable to

DICTIONARY LIQUIDATION

and mail to

Box 161

Glenville State College

Glenville, West Virginia 26351

C.O.D. orders enclose 1.00 good will deposit. Pay balance plus C.O.D. shipping on delivery. Be satisfied on inspection or return within 10 days for full refund. No dealers, each volume specifically stamped not for resale.

Please add \$1.25 postage and handling.

CALCULATOR

Electronic -

Hand Held -

Under \$55.

Write for details.

Atlas 2154,

Clarksburg 26301

WANTED:

Costumes for GSC

Speech Department

Immediately!

1930's - 1950's

All Sizes

Assorted shoes, hats, etc.

Will pick up,

call 462-7361, ext. 318

COMMUNITY

SUPER MARKET

Glenville, W. Va.

Glenville Midland Co.

"The Old Reliable

Dept. Store"

Glenville, W. Va.

FREE PREGNANCY TESTING

PREGNANCY TERMINATION

Call 24 Hours A Day

(202) 872-8070

THE NEW WOMAN'S
CLINIC

1990 M STREET, NW
WASHINGTON, DC 20036

MOBILE HOME

For Rent or Sell:

1972 - 12 x 55 Mobile
Home. Two-bedroom,
wall-to-wall carpeting,
already set up, good
location.

Call extension 223

MOST LIEUTENANTS IN THE MARINE CORPS END UP TEACHING ENGLISH AND MATH, AND SCIENCE, AND HUMAN RELATIONS

That's right, because most Marine Lieutenants lead platoons of 40-50 men for whom they have accepted responsibility. Not just on the drill field, or in the jungles, but in every phase of life. And the men they lead haven't all had a perfect education. Many need to improve their language skills, their math skills, their social skills - to be better Marines. They all need to continue learning advanced military skills; new concepts in human relationships; the latest political events. That's why it's not unusual to find Marine Lieutenants preparing lesson plans, making training aids, giving classes, or grading papers. As Marine Officers, of course, they are expected to continue their own educations too - through off - duty education, correspondence courses, formal military schools, and advanced degree programs.

Talk to your Marine Officer Selection Officer on campus the 24th and 25th of January 1974, or call collect (303) 744-4355.

UNITED STATES MARINE CORPS

Officer



Selection