

The Glenville Mercury

Number 17

Glenville State College, Glenville, W. Va.

Friday, February 17, 1978



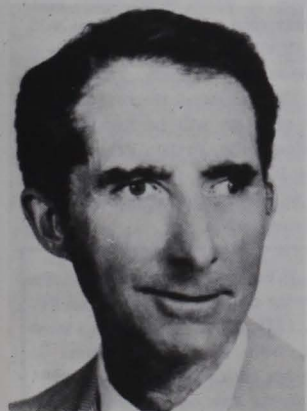
Cast of "The Rainmaker" Front (l to r) - Kathy Sullivan, Ms. Rubin, Abby McHenry. Back (l to r) - Lynn Gough, Jeff Davis, John Holland, and Robey Godfrey. not pictured - Gene White, Billy Hutchinson.

Dr. Ross To Speak

The American Association of University Women (AAUW) will hold its monthly meeting on Wednesday, February 22, 1978, in the Multi-Purpose Room in the Pioneer Center. The Business meeting will begin at 6:30 p.m. and the speaker will begin at 7:45 p.m. The public is invited.

Thomas R. Ross, Professor of History and Chairman of the Department at Davis and Elkins College, will speak on "Current Issues of Public Policy Relating to Energy, Economics, Education, and Environment," part of the Mountain Issues Forum, funded by The Committee for Humanities and Public Policy in West Virginia. The purpose of the project is to enable scholars in the humanities to lead discussions of public policy issues of concern to West Virginians.

The Committee for Humanities and Public Policy is a state-based program of the National Endowment for the Humanities. It grants money for projects that engage



THOMAS R. ROSS

scholars in the humanities in dialogues with the adult out-of-school public. Those interested in applying for grants to launch projects dealing with public policy issues may write to CHAPP's Executive Director, Charles H. Daugherty, Box 204, Institute, 25112.

Secretary Speaks

by Debbie Vance

On February 13, West Virginia Secretary of State A. James Manchin visited Glenville State College Campus. He was here to address Dr. Joe Darnall's State and Local Government class, and any one else who wanted to attend, on the importance of getting involved in the things that are happening around them.

Mr. Manchin began his speech by quoting Socrates and orating some remarks stressing the importance of government to the people. He then stated that only 50% of the people registered to vote actually do vote. College students were his example of the people's lack of interest. According to Mr. Manchin college students are full of sound and fury, they go on crusades to get different things done but when it comes down to really working on them, only 15-20% actually do. He feels that students fail to express themselves. He stated that he hopes we cared enough to say what was on our minds and could be individuals. We must feel that we are a part of the whole scheme of life but we must also be our own person. "You are the captain of your fate."

During a question and answer session, Mr. Manchin was asked about the New Election Reform Bill. His reply was that if the bill passed,

'Rainmaker' Is Scheduled

On March 9, 10, 11 the drama department under the direction of Ms. Janet Rubin will present The Rainmaker, by Playright N. Richard Nash. The Rainmaker is a romance set in the midwest dust bowl in the 1930's. Do not be scared off by the term "romance" however, The Rainmaker does not fit the model of a classic romance. We will have further information on the play in later issues.

Cast of The Rainmaker include:

Jeff Davis of Glenville, W.Va. will play the part of Jimmy.

Gene White, a senior, will portray Starbuck.

John Holland will play H.C.

Billy Hutchinson, from Elizabeth, W.Va. will play File.

The character of Noah will be played by Robey Godfrey.

Lynn Gough will portray the sheriff.

Abigail McHenry will portray Liz-zie.

Debbie Wildman and Randy Gillis will be understudies.

Anyone wishing to work on the technical crews, please contact Ms. Rubin.

any one buying or selling votes will be tried in a federal court as a federal crime. Presently buying or selling of votes is only a misdemeanor. When asked if he thought that politicians waste taxpayer's money he said, "Oh, my God, yes!" He then went on to say that even his \$100.00 per month expense account upsets some people. Manchin is against giving up the Panama Canal because he feels that we are moving too fast, thus creating problems. When asked if the coal union members were on a legitimate strike, he said yes they had some legitimate reasons and some non-legitimate reasons. He says the coal miners won't get everything they want and he fears the break-up of the union. Mr. Manchin feels there is strength in unity and if the unions fall we will be in trouble. When asked about his future political career, Mr. Manchin's reply was that he would like to someday go to congress but he said, "I'm not sophisticated enough to become Governor." He also said he wants to be a crusader, he wants to help, he wants work.

After Mr. Manchin's address, the press had a short interview with him and discovered he had been on our campus at least fifteen times, and several times to visit with former president D. Banks Wilburn and for-

(cont. on page 2)

Energy Conserved Under PSC Order

The Public Service Commission of West Virginia has found that a potential energy emergency exists in the state because of a serious continuing decline in coal reserves at generating stations of certain electric public utilities serving West Virginia and that the public interest will be served by the adoption of a statewide energy emergency operating plan.

The plan calls for the immediate implementation of the following measures: (1) Reduction of electric power use by thirty (30%) percent or preferably to a level which is

just sufficient to meet essential needs. (2) Reduction of outdoor lighting to minimum level necessary for life and property protection, and a 50% reduction in number of elevators used. (3) Curtailment of electrical energy for entertainment, recreational, and sporting activities. Further curtailments and electrical power reductions will be announced as conditions warrant.

Glenville State College will comply with the Public Service Commission's order by initiating these immediate measures: (1) Reduce outdoor lighting to minimum levels. (2) Close non-essential elevators. (3) Reduce electrical power usage by: (a) closing several campus buildings at 5:00 p.m. and others at 9:00 p.m. (residence hall excluded). (b) re-scheduling of night class locations to the Administration Building and the Pioneer Center. (c) shortening the hours of operation for the Library and the Pioneer Center; and (d) curtailing evening activities scheduled in the Health Building, Pioneer Center, and the Administration Building (unless otherwise noted).

Two previously scheduled activities for this Thursday, February 16, the basketball game with Wesleyan and the concert by the Temple Trio, will be held. Campus-wide evening activities beyond this date are questionable and will probably not be held until the emergency situation is alleviated. All employees and students are encouraged to conserve electricity, campus-wide, during normal hours of operation and in the residence halls after hours.

Campus buildings scheduled to close early, effective February 14, 1978 are: Administration Building, 9 p.m.; Clark Hall, Health Building, Science Hall, Eberle Hall, Firestone Lodge, 5 p.m.; Pioneer Center - south, 9 p.m.; Library 8 p.m.; New Locker House, 6 p.m.; Pioneer Center - north, 5:30 p.m. The Library and Pioneer Center will announce reduced week-end hours of operation. Other buildings (residence halls excluded) will remain closed on week-ends. Note: The National Teachers Exam scheduled for Saturday, February 18, in the gym will be given as planned.

Seminar Held On Tues.

There will be a Food Service Management Seminar on Feb. 21, 1978 at 6:30 p.m. in the Little Theatre.

At this time there are four speakers tentatively planning to speak at the seminar: Mr. Pratt, President of Harrison County Restaurant Association; Mr. McCoy, Manager of McCoy's Motor Lodge in Ripley, W.Va.; Mr. Studer, Manager of the Holiday Inn at Parkersburg; and Mr. Stewart, Personnel Manager of Long John Silver's in Pittsburgh, Pa.

This seminar is mainly for business, business management, and food service majors, but anyone may attend.

Who's Who honorees may pick up their National Who's Who Certificates in the Mercury Office.

'No Deposit, No Return' has been moved to 5:30-7:30 p.m. rather than being shown at 6 p.m. and 8 p.m.

There will be a meeting of the Social Work Club on Monday, February 20, 1978 in room 105 PC at 3:15. All members please attend.

As a reminder to all students applying for the West Virginia Higher Education Grant for 1978-79 the application deadline is March 1, 1978. All applications must be submitted to the Financial Aid Office by February 28, 1978.



Debbie Vance of the Mercury is pictured interviewing Secretary of State A. James Manchin during his recent visit to the GSC campus.



Energy Problem Worsens!

Here we go again! Only this time the problem is a little greater than last year's frostbite scare. When the gas goes, we can fall back on Thomas Edison, but with dangerously low coal reserves, even Tom can't save us. Glenville State has joined the West Virginia Public Service Commission by initiating immediate emergency measures in order to reduce the college's usage of electricity. Many students can't seem to grasp the urgency of the situation and stumbling about in the dark on campus isn't exactly appealing.

The emergency measures which were put into effect Tuesday, Feb. 14, aren't really so drastic but people usually tend to get emotional when their world is altered. The GSC community is no exception to the rule. Night class students never realized how much they like Clark Hall until they were relocated to the Ad. building. Student Union regulars never realized how great the union was until its hours were shortened considerably (from 10:00 p.m. to 5:30 p.m.).

Although the measures aren't too drastic and people are upset over trivialities the emergency situation has presented problems to our campus. All evening sports and activities scheduled here are to be cancelled unless another solution is found. With the basketball tournaments fast approaching it hardly seems fair that games must be cancelled. Another problem of great concern to this office is the closing schedule for campus buildings. Since the Mercury office is located in Clark Hall, scheduled to close at 5 p.m., it will take slightly more than a miracle to get the paper out on time every week. Another difficulty brought about by the building schedule concerns many campus organizations. It is going to be very hard for organizations to find meeting places during this time of emergency.

With these problems and others we can console ourselves by remembering that the situation is only temporary and by conserving as much as possible in hopes that the coal miners will go back to work soon and that spring will come early this year.

Peggy Bauman
Editor

THE GLENVILLE MERCURY The Student Newspaper

Published weekly and entered as second class mail at the Post Office at Glenville, West Virginia 26351. Subscriptions \$5.00 a year.

Member of the
associated
collegiate
PRESS



Editor Peggy Bauman
Assistant Editor Susan McCartney
Photographer Mike Boggs
Sports Editor Ron Gregory
Cartoonist Gil Valdez
Advertising Manager Mike Boilon
IBM Operators Lisa Jones, Debbie Wildman, Barbara Deitz
News Bureau Debbie Vance
Typist Jo Price
Circulation Tim Brady, Pamela Laign
Production Editor Steve Boilon
Reporters Tim Brady
Lavette Taylor

Greek News

TAU KAPPA EPSILON

Fraters of Iota-Omega chapter met the 12th of Feb. for the weekly meeting.

Ideas for future money making projects were discussed rough draft, but nothing definitely pinpointed as of yet. Frater Ted Smith announced the out-come of last Friday's home made bread sale. With the help of the O.D.'s together we sold 152 loaves. The fraters would also like to sincerely thank the Order of Diana, not only for help with the bread sale but the fantastic job they did during the formal rush. Again, thank you ladies, keep up the good work!

Daisy Melo was selected by the fraters as an entry for TEKE International sweetheart. She will be competing for the title along with other young women chosen by TEKE chapters throughout America. Good luck, Daisy.

We the fraters would like to extend a big GOOD LUCK to 8 newly signed associate members. Stick it out gentlemen!

Last but not least, the House crew would like to thank all the fraters who came to the house for clean-up. Keeping the house clean is a continuous job and a little help is always grand. (33 actives, 8 associates).

Final Note: We believe that the essential elements of brotherhood are love, charity, and esteem.

DELTA ZETA

The sisters of the Delta Zeta sorority held an informal meeting Monday Feb. 13 in the chapter room.

Plans were completed on our closed ball. It was decided to have it on April 8th at the Gateway Inn in Huntington. So come on girls. Get those dates.

Rush has been really great this semester and we wish to thank all the girls who attend our parties.

The sisters are running the following people for Student Congress elections next week: President, Terry Evans; Vice President, Bev Hamric; Secretary, Deb Frymier; Treasurer, Jenny Shepard; Parliamentarian, Tammy Gunnoe; Senior Rep, Judy Boso; Junior Rep., Sue Liewing; Sophomore Rep., Deena Snyder; Senators at Large, Daisy Melo, Sonnie Shaw, Lynn Craig, Janice Smith, Jaquetta Mahan, Karen Pettry, and Susan Pyles.

We hope Susan Parsons is feeling better and her knee is back in shape.

Good luck to the Pioneers on their game this weekend. We're behind you all the way!

Our standards meeting will be held on February 23 at 5:00. All the girls must be there. Don't forget our spaghetti dinner March 7 & 8.

We want to thank our rush chairman, Sue Liewing, for a wonderful job she did these past two weeks. Keep up the good work, Sue!

A View About the Energy Crisis

Congratulations, GSC?

I understand we have had a pat on the back from our local natural gas company. Whatever the cause for the letter in last week's Mercury, the saving of fuel must have happened in January. I don't believe there are any areas on campus that have the heat turned down to 68 degrees. If the place was at 68 degrees, people would keep their sweaters and coats on most of the time instead of taking them off as soon as they get inside. The Ballroom is usually void of people, yet I have not seen it this winter when the heaters weren't heating. The halls in the health building are warmer than locker rooms. And why is there usually a window or door opened a bit in the Science building? Some of the offices and classrooms are actually hot at 8:00 in the morning. When one walks into a hot room in the morning, he knows the heat has been on all night. Sure, it's all right to heat the place 24 hours a day, and wasteful.

Heat is not the only commodity GSC seems to have an unlimited supply of. Electricity is also squandered on campus. Why do the halls, stairways, labs, offices, and some latrines have to be lit at night? There's nobody in there to see what's lighted. The campus police have their flashlights, and criminals would be in dark corners anyway. Nobody needs all the lights along the sidewalks.

Even some lights at our new athletic building are left to use electricity sidewalks.

I cannot understand how we can save any kind of energy when we waste so much. If the people who run, maintain, and attend GSC were to foot the energy bills, I believe the heat would go down, and lights would go off. I know we can save more energy. All we need to do is quit wasting it.

John R. Janzen

LAMBDA CHI ALPHA

The Brothers of Beta Beta Zeta held their first formal meeting Monday night. Long range plans are being made to improve the general morale of the fraternity and the college.

An Arm Wrestling Tournament is again being sponsored by the Brotherhood. The dates for this event is scheduled for Feb. 22 or 24. All interested persons are urged to watch for posters and to register with Ronnie Butcher. Trophies will be given to the winners of each division.

Thursday night has been declared the official get together night. Brothers and Ladies are urged to meet somewhere on this night.

Prospective Associate Members are urged to pick up their bids as soon as possible. Any male with at least a 2.0 average is urged to talk with any brother about the possibility of Associate Membership.

The Brothers have sent flowers to Sondra Price and Marilyn Pritt. Sondra is the advisor for the Ladies of the White Rose and Marilyn is the wife of Brother Jim Pritt. A wish for speedy recovery is extended.

The Housing Committee for Beta Beta Zeta has selected a new chairman, Brother Ken Anderson, as we continue to seek Fraternity Housing. The possibility of lease-buying a house is being strongly considered.

Brother Chuck Case has once again been elected A-H of the week. Brother Case is now known as the Grand Ol' AH of GSC. The WINO award goes to Brother Tom Phillips. Brother Roger Young has received the KCUF award for his work as Scholastic Supervisor. It was under his supervision that we received the Intrafraternal Scholastic Award with a superior grade point average.

THETA XI

The Kappa Eta chapter of Theta Xi Fraternity held a meeting February 13 at the House. Plans are being finalized for Closed Ball. Party time again as we are planning a House Party February 23 at the House after the Glenville-Tech game. Gin and lemonade will be the poison.

The Theta Xi Smoker held Tuesday evening at the house were quite successful and everyone had a very enjoyable time. Our pledging program will be getting underway in the very near future. A special thanks is extended by all the Brothers to the Theta Girls for providing snacks and assistance at the Smoker.

Hopefully the flu-bug will have passed away before February 28 and everyone will be getting up for Tournaments. There would be no better way to get ready than to come up to the Theta Xi House after the Glenville-Tech game.

I would like to close by awarding the covetee S.L.O.T.H. award to a most deserving Brother, that being Jim Huffman, Congratulations!

SIGMA SIGMA SIGMA

The sisters of the Delta Alpha chapter of Sigma Sigma Sigma held a ceremonial meeting on February 13.

All of the sisters hope the rushees enjoyed the Oz Party, and would like to welcome all the new pledges. The members will be having a reception today, Friday, February 17, at 4:30 for the pledges. Pinning will be held Sunday at the Presbyterian church.

W.Va. Civil Service will be interviewing students on campus on Feb. 22, 1978. There will also be a meeting with all senior students in Teacher Education who will be graduating in May on Wednesday, Feb. 22 in the Ballroom at 12:30.

Ron's Ramblings

by Ron Gregory

I wrote an editorial last week concerning the outbreak of flu on the GSC campus. As I wrote that I was just beginning to get the stuff myself. I have now suffered through it and its after-effects for a week and I sure don't feel like writing about it now.

So, to change the subject, I'll talk about the coal strike awhile.

Many people may wonder what a sports columnist would find to discuss concerning the coal strike. After all, coal would seem to have little to do with athletes and athletics.

However, the current strike has reached the point where it has a certain amount to do with just about everything.

The most direct link the strike has to sports is the fact that energy usage is going to have to be curtailed. This means, then, that some athletic events will have to be either shortened or cancelled entirely. After all, most people won't want to run around shooting basketballs in a 20 degree gymnasium without lights. And there won't be many fans who will feel the urge to sit around in thermals with flashlights trying to watch the games. The old chalk-type scoreboards are also definitely a thing of the past, I think.

Without sounding old-fashioned, I like to remember when a man and his son went out on a hillside and hand-mined coal all day. That's impossible today, of course, because one couldn't get around all the laws required in order to mine coal and it would be impossible to find a man and his son who get along for a

The swimming pool is closed indefinitely due to repairs.

whole day. Anyway, so much for nostalgia.

Still, I hope everyone knows by now that it's time for Arnold Miller, President Carter or someone to get down to brass (coal?) tacks (that's not tax) and get the black stuff moving again so the country can start to move again.

Remember the commercial which rang out, "Coal is West Virginia"? Well, if that's true, we'd better do something in a hurry.

Several people were remembering the "good old days" the other day, talking about the time when the GSC gym was jam-packed for home basketball games, especially against Fairmont and Morris Harvey.

I recall those days, too, but I think our fans of today are doing pretty well and are to be commended. In a time when the popularity of lots of traditional things have fallen, our fans still give us something to be pretty proud of.

The sports editor committed an error last week in discussing this year's WVIAC men's basketball tournament. He said that there will be no "bye" in this year's tournament. There will, in fact, be two "byes," one for the team finishing first in regular season standings and one for the team finishing second.

Energy Crisis Hits Athletes

In keeping with the curtailment in energy usage at GSC, Dr. Now has announced that the physical education building will be closing at 5 p.m. each day.

Last night's home game with Wesleyan was played according to schedule. However, it has not been determined if the final home game of the year for the men with Tech will be played next Thursday as scheduled at 8 p.m.

The three remaining home women's games have all been moved earlier in the day. The February 17 game with State will be played at 1 p.m. The February 20 contest with Tech is now set for 3:30, and the February 21 game with Muskingham is to be played at 1 p.m.

The men and women are dividing practice time and limited to approximately one hour each during the evening.

Dr. Now said there are plans to hold sectional and regional high school tournaments in the school gym in March. He said he hopes the energy problem will have been corrected by that time to allow the games to be played as scheduled.



Debbie Grogg puts up a shot in the GSC game with Salem.

Women Win Three

The Pioneer women brought their season record to 6-6 during the past week. The G-Women posted three wins and two losses during the period. A summary of each game follows:

GSC - 69, Concord - 65

In a game played at Summersville February 8, the Pioneer women claimed their fourth victory of the season by defeating the Concord Mountain Lions.

Kim West led the Pioneers with 16 points. Others scoring for the G-Women were: Kim Short, 14; Kim Roten, 12; Mary Zangari, 11; Patsy Groves, 11; Debbie Grogg, 3; and Sally Haught, 2.

Reed led Concord with 22 points. Morefield had 18 and Zeltman added 13.

The Pioneers made seven of 13 free throw attempts, while Concord hit on nine of 25 from the line.

A-B - 53 GSC - 44

The Pioneer gals gave Alderson-Broadbudd a rough contest before falling to the Battlers, February 9, at Philippi.

Vicki Paugh led A-B with 14 points, while Cindy Lowe and Andrea Jones scored ten each for the victors.

For Glenville, Kim Short had ten points, Kim West, eight, Kim Roten, seven, Debbie Grogg, nine, Sally Haught, four, and Mary Zangari, Kim Bickel and Patsy Groves, two each.

The Pioneers had a total of 21 field goals and hit on two of five free throw attempts. A-B had a total of 25 field goals and made three of seven shots from the charity stripe.

Shepherd - 67, GSC - 58

The Shepherd College Rams held off the Pioneer women in a game played in the GSC gymnasium February 11.

June Eagleton led Shepherd with 23 points, and Karen Palmer and

Mindy Barrows had 11 each for the winners.

Kim Bickel led the Pioneers with 16 points, Debbie Grogg had nine, Kim Roten tossed in eight, Mary Zangari added six, Kim Short, Linda Collins and Beth Litton had four, and Patsy Groves chipped in two for Glenville.

GSC - 70, Salem - 66

The Pioneer women built up a halftime lead and held off a late-charging Salem rally to edge the Tigers, February 13, at Glenville.

Kim West led the Glenville scoring with 24. Kim Short and Debbie Grogg added 16 for the Pioneers, while Sally Haught tossed in six, Kim Bickel added four, and Patsy Groves and Mary Zangari added two each.

Glenville scored 30 field goals and clicked on 10 of 20 from the charity line while the Tigers netted 26 field goals and 14 of 23 from the foul line.

GSC - 71, Fairmont - 49

The Fairmont women were never in the game as our gals shot out to an 18-9 first period lead and never looked back in coasting to an easy win, February 14, at Fairmont.

The Pioneers extended the lead to 36-19 at the half, led 49-34 at the end of three periods, and outgunned Fairmont 22-15 in the final ten minutes to claim the victory.

Kim Bickel led the Pioneers with 14 points. Debbie Grogg had 13, Kim Short, 12, Kim Roten, 11, Kim West, 7, Sally Haught, 6, and Linda Collins and Patsy Groves, 4 each for Glenville.

John Edward Voloski's name was inadvertently omitted from the Dean's List last week. Mr. Voloski, of Bradley, WV, made straight A's. The Mercury regrets the error.

Pioneers Split Two

The Pioneer men batted an even .500, winning a contest with State and losing to A-B. A summary follows:

A-B - 78, GSC - 65

The Pioneers, playing without the services of star center Ralph Ledbetter, who was sidelined with the flu, lost to the Alderson-Broadbudd Battlers, 78 - 65, in a game played Thursday, February 9, at Philippi.

A-B hit a streak in which they scored 17 unanswered points in downing the G-Men. Glenville trailed 41-35 at the half and were outscored by the Battlers, 37-30, in the second period.

Doug Watts led the Pioneers with 12 points, Phil Thomas added 11, Wayne Washington, nine, Andre White, eight, Ernie Gilliard, seven, Charles Warner and Gary Nottingham, six, Joe Kniceley, four, and John Irwin, two, for Glenville.

The Pioneers had a total of 27 field goals and hit on 11 of 16 free throws in the contest.

Mickey Hampton topped all scorers in the game for A-B with 24 markers, Chris Yost tossed in 16, Dave Gandee added 15, Hayward Graves, eight, Jimmy Forman, seven, Gary Washington, six, and Theodore Williams, two, for A-B.

Alderson-Broadbudd had 31 field goals and made 16 of 23 free throw attempts during the game.

GSC - 84, State - 76

The GSC Pioneers withstood a fierce West Virginia State rally to swat the Yellow Jackets, 84-76, Tuesday night at Institute.

The Pioneers, with Ralph Ledbetter back in action following a bout with the flu, led by six points at 45-39 at the half. The G-Men then rushed on to a 58-45 lead before State began their comeback.

The home team rallied behind guards Edgar Randall and Leon Brown and center Percy Anderson to take a 72-71 lead with 5:59 flashing on the scoreboard clock.

The Pioneers, led by Charles Warner with two buckets, rattled off seven unanswered points to take 78-72 advantage with just four minutes to go in the game. Randall came back with two quick field goals to cut the margin to four with 2:20 showing. State got their hands on the ball twice with chances to cut the GSC lead but were unable to do so in the final two minutes.

Ledbetter led the Pioneers with 27 points, Ernie Gilliard added 19, and Charles Warner 18 for Glenville. Doug Watts had 13 for GSC, Gary Nottingham, 4, Joe Kniceley, 2, and Andre White, 1.

For State, Edgar Randall had 22 points, Percy Anderson, 18, and Pete Thurman and Leon Brown, 10.

Bowlers' Fifth

The GSC bowling team is currently in fifth place in the West Virginia Intercollegiate Athletic Conference after participating in regional tournaments last weekend in Fairmont and Clarksburg. West Liberty, with a record of 13-3, is in first place in the conference.

High man for the Pioneers during the tournaments was Dave Twyman, who rolled a high game of 237 and carries an average of 177. Darrel Baylous has an individual average of 176, Joe Noble has a 171 average. Phil Shortall carries an average of 164, Greg Martin has a 164 and Randy Miller's average is 158.

The current Pioneer record is 6-10.

The GSC Bowling team is scheduled to compete in another regional this Saturday at Robin Lanes in Charleston.



Pictured above are some members of WGSC Radio Staff, L. to R., Row 1: Randy Whytsell, Mike Murphy, Greg Haddox, Mike Maloney, Mike Sears, and Mark Linkous. Row 2, L. to R.: Father Rooney, Stan Hull, Mark Hall, Russell Taylor, Donald Curtis, Elizabeth Riddle, Nancy Waybright. Row 3, L. to R.: Tom Fletcher, Bill Armentrout, Debbie Graham, Dee Walker, Ed Evans, Teresa Barnett, and April Lowe.

Beautiful motel, 1/2 block off the ocean. Color TV, AM/FM stereo. Rooms: Minimum of 5 students—\$12.00 per student per day. Efficiencies: Minimum of 7 students—\$12.00 per student per day. Apartments: Minimum of 8 students—\$12.00 per student per day. Minimum stay of one week—extra days acceptable. Write to: Ray Allen, Manager, Fiesta Motel, 2915 Cortez, Ft. Lauderdale, Fla. 33316. \$50.00 deposit required with reservations. Make check or money order payable to Fiesta Motel. Approved by American Express and VISA. All accounts acceptable. Due to limited accommodations in Ft. Lauderdale during the semester break, there will be no rooms available without reservations.

STEREO DISCOUNTERS

Our name tells the story! Save \$5 on Marantz, Pioneer, Sansui, Kenwood, B.I.C. and 75 more brands. Send for our FREE catalog.

STEREO DISCOUNTERS, DEPT. C-178
6730 SANTA BARBARA CT.
BALTO., MD. 21227

(A. James Manchin
continued from page 1)

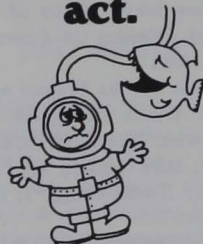
mer dean Delmer K. Somerville. He has been to every college in the state of West Virginia at one time or another. When asked what his opinion of Glenville State College was, he said it was a typical college campus, although there was more emphasis on the humanities and the people were "down to earth." The final question asked Mr. Manchin was, "What do you enjoy most about being Secretary of State?" His answer was, "working with people, being keeper of the Great Seal of West Virginia and having to be responsible to the people of the state."

The Glenville State College Panhellenic is sponsoring Heart Sunday, this Sunday, February 19, 1978. Tri-Sigma's and Delta Zeta sorority women will be going door to door in the town of Glenville to ask for donations. Please Give So that Others May Live.

SUMMERS PHARMACY

Prescription Druggist
Hours 8 - 8 p.m.

**Perform a
death-defying
act.**



**Have your
blood pressure
checked.**

American Heart Association
WE'RE FIGHTING FOR YOUR LIFE

GREAT FOOD VALUES !!

**PIONEER'S
GROCERY**

Food Stamps Welcome
Monday - Saturday
8 AM - 9 PM

WGSC On Air

WGSC Radio Station is back on the air this semester with a staff of approximately 35 people. There have been a few changes: additional disc jockeys, longer hours (hopefully, special programs, etc.

The executive staff of WGSC is made up of Greg Haddox, manager; Mike Maloney, assistant manager; Randy Whytsell, program director; Mike Murphy, business manager; and Ed (Fast) Evans, P.S.A. Director.

At the beginning of the semester, the station had planned to stay on the air from 2 p.m. to 1 a.m. Due to the state-wide energy cut-back the station will be on the air from 2 p.m. - 11 p.m. on Mon. - Wed. 2 p.m. - 10 p.m. on Thursday, and from 5 p.m. - 11 on Sunday.

WGSC will now be selling advertisements. Rod Loysh is in charge of this. Club meetings and this sort of announcement will still be free of charge. Who, what, where, when, and why should be turned over to someone at the station in written form so the announcements can be taped in advance.

WGSC will also be doing high school dances. Ed Evans, is in charge of scheduling.



FOX OUTFOXED

WGSC has eight people eligible this semester for the Society for Collegiate Journalists. To be eligible, they must have worked at the radio station for a minimum of two semesters. Those eligible are: Greg Haddox, Randy Whytsell, Mike Murphy, Sheila Adams, April Lowe, Karen Pettry, Doug Bailey, and Bruce Wendelken.

The station will also try to be aired on cable TV. They also anticipate a broadcasting seminar from WXIL in Parkersburg.

WALT DISNEY PRODUCTIONS

presents

No Deposit No Return

February 22 NEW TIME!!! 5:30 & 7:30

WE'RE FIGHTING FOR YOUR LIFE

Reduce If Overweight

American Heart Association

Campus Pub

The Scoreboard



Sun. - Thurs. 6 a.m. - 10 p.m.
Friday 6 a.m. - 11 p.m.
Saturday 7 a.m. - 11 p.m.

STOP BY AND SEE US!

KANAWHA UNION BANK

**Our bank is known for
loans, savings, checking, expert advice**