

The Glenville Mercury

Number 16

Glenville State College, Glenville, W. Va.

Friday, January 25, 1980

Student Teachers Assigned

A total of 68 students will begin their prospective teaching careers on February 18. They will start their observations on February 5 and on February 12.

A list of the students, their specific teaching fields, and the county and schools to which they are assigned, are listed below.

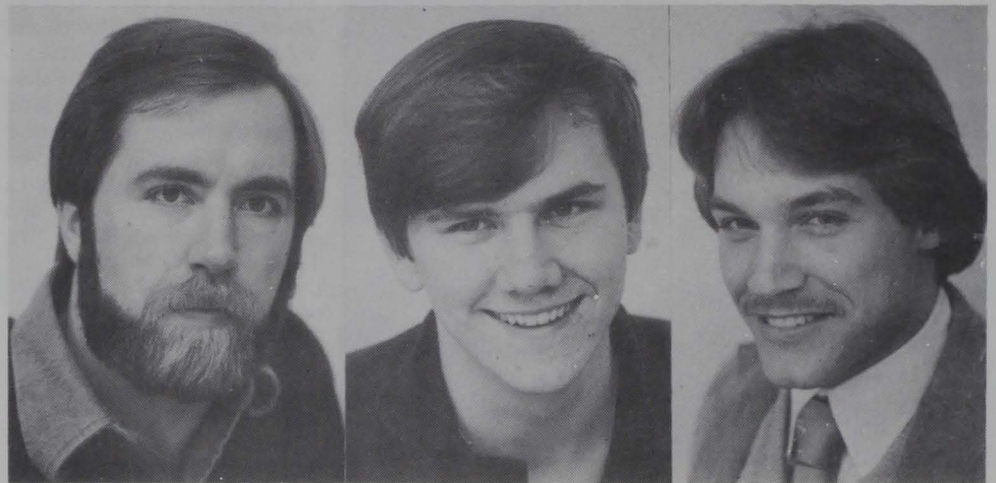
Melinda Sue Baisden, P.E. K-12/Health K-12, Weston Jr. High, Weston Central; Deborah Sue Carson, Art K-12, Weston Jr. High, Weston Central; John Cameron Coutz, P.E. K-12/Safety 7-12, Burnsville Elementary and Middle; Mark W. Davis, P.E. K-12/Health K-12/Safety K-12, Calhoun Co. High, Pleasant Hill Elem.; Mary Elizabeth Dunn, Music K-12, Braxton Co. High, Sutton Middle; James S. Fairchild II, Social Studies Comp. 7-12, Nicholas Co. High; Neil Garvin, Social Studies Comp. 7-12, Williams-town High; Kenneth Kevin Grogg, P.E. 7-12/Safety 7-12, Calhoun Co. High.

Sheila Rae Hamden, Music Ed. Comp. K-12, Calhoun Co. High, Elementary Schools; Beverly Lynn Hamrick, Business Ed. Comp. 7-12,

Braxton Co. High; Loren Michael Harris, P.E. K-12/Health K-12/Safety 7-12, Wirt Co. High, Elizabeth Elem.; Eddie Joe Hendricks, P.E. K-12/Health K-12/Safety K-12, Burnsville Elem. and Middle; Anetta Johnston, P.E. K-12/M.R. K-12, Burnsville Elem. and Middle; Brian Keith Jones, P.E. K-12/Health K-12/Safety K-12, Braxton Co. High, Flatwoods Elem.; Karen Sue Kirby, Business Ed. Comp. 7-12, Calhoun Co. High; Sue Ellen Lieving, P.E. K-12/Safety K-12, Parkersburg South High, Tavenner-ville Elem.; June A. Nohe, English 7-12, Parkersburg South High; Monica Leah Offett, Art K-12, Arnolds-burg and Minnora Elem., Library Science K-12, Spencer High; Kenneth Lynette Parker, P.E. K-12/Health K-12/Safety K-12, Parkers-burg South High, Tygart Elem.

Edward Lee Radcliff, Social Studies 7-12, Calhoun Co. High; Marshall David Riley, Social Studies 7-12, Calhoun Co. High; Gary Lynn Shaffer, Art K-12, Braxton Co. High, Arnoldsburg and Minnora Elem.; Stephanie Darlene Six, Social Studies Comp. 7-12, Pennsboro High;

(Cont. on pg. 2)



Michael Farber

Edward Radcliff

Perry Coe

Three Participate In Internship Program

Three Glenville State College students participated in the West Virginia Public Service Internship Program. This is a federally funded program, sponsored by the WV Board of Regents, that allows students the opportunity to gain real life experience in various government agencies.

Each student was involved in the program from September 1, until the end of January. They received 15 credit hours in their respective fields.

Michael C. Farber, a History major, worked in the West Virginia Supreme Court of Appeals under Justice Darrel McGraw. Michael performed a variety of duties including historical research on a tax case that later led to a landmark decision in the court.

Michael also accompanied Justice McGraw to the Kanawha County jail on one occasion. This one occasion happened to be the well known incident between McGraw and Sheriff's deputies.

"It was the best opportunity for an everyday life experience," says Michael about the time spent in the program.

Perry Coe, the second participant, worked in the WV State Tax Department, Local Government Relations Division, Public Utilities Section. Perry worked as a Utility Accountant, good experience for a Business major and Economics minor.

During his internship, Perry helped set up a system through electronic data processing concerning sales ratio analysis. Also Perry assisted in appraisals of Public Utilities and attended Board of Public Works hearings.

"The program gave a fairly clear insight into what a college student should expect when entering the labor force," says Perry of his experience.

Edward L. Radcliff, a senior Social Studies major from Troy, WV, worked in Secretary of State, A. James Manchin's office. Eddie en-

joyed a number of duties including traveling with Secretary Manchin, working in the Corporations Office, and making contact with Federal Marshalls.

One particular experience was memorable for Eddie. He worked on the Jefferson Jackson Day Dinner, which featured Democratic Presidential hopeful, Edward Kennedy. Eddie's ride in the motorcade had to be cleared by the C.I.A.

According to Eddie the entire time was exciting, rewarding, and memorable; a time he won't soon forget.

The program began in 1975. All colleges and universities are invited to send qualified students to serve in some area of government related to their field. Dr. Joe Darnall, GSC liaison for the program, stated that students are chosen by a faculty committee. In the fall semester, 13 students statewide were involved and this semester 15 students, including three GSC students are involved.

"Camelot" Cast Given

The Arthurian Legend - Knights of the Round Table is the plot for the musical "Camelot". Camelot is under the direction of Linda McKown, Ed McKown-musical directors; and Jennifer Morton, Kathy Sullivan, and Carol Wel-

son-assistants to the directors. The Cast for the musical "Camelot" to be presented March 6, 7, and 8 is: King Arthur - Joe Hickman; Merlyn - Raymond Jones; Lancelot - Gene White; Pellinore - Eddie Harbert; Sir Dinadan - Skip Thrasher; Sir Lionel - Joe Hickman; Sir Sagamore - Marvin Taylor; Tom of Warwick - Kevin Evans; Guiliam -

Dan Depugh; Colgreance - Tim Brady; Bliant - Kent Woofter; Castor - Mike Knight - Phil Minigh; Priest - Louis Kent; Horrid - Scooter Gary; Guenevere - Fran Davis; Understudy - Terrye Evans; Morgan Le Fey - Nancy Sutton; Lady Ann and Nimue - Carole Norton; Lady Catherine - Terrye Evans; Lady Sybil - Marty Anderson; Ladies-in-waiting to the Queen - Ms. Barbara Nicholson, Ms. Yvonne King, Ms. June Nonnenberg; Ladies of the court - Debby Dean, Heather Hickman, Lorrie Price, Peggy Gasper, Martha Rose Hickman.

Mike Murphy, Student Congress President, felt that the dance got off to a slow start but all in all it was a success.

SC Nominations Being Accepted

Nominations are now being taken, until Feb. 1, 1980, for the election of Student Congress Officers. Nominations can be delivered to the Office of Student Affairs during office hours. Posting of the candidates names will be Feb. 3-9. Each candidate will have an opportunity to give their platform in the *Mercury*. The election of officers will be held Monday and Tuesday (Feb. 18-19) in the Pioneer Center from 9 a.m. to 4 p.m., and in the dorms from 7 p.m. to 11 p.m.

To be eligible for the office of president, vice-president, or parliamentarian, a student must have a

2.5 or higher average, and must be a sophomore or junior at the time of elections. The student must be a full-time student.

The secretary and treasurer must hold a 2.0 or better average, and also be a full-time student. The five senior officers, president, vice-president, parliamentarian, secretary and treasurer are eligible for 3 credit hours in Political Science 499-01. There will also be Senators-at-large, and class representatives elected. These posts also require a 2.0 or better average, and the student must be full-time.

Glamour Contest Winners Given

The "Glamour Magazine" Top Ten College women competition on Glenville State's campus was won by Marilyn King and Wendy Elliot.

The 10 member Publication Committee voted by secret ballot on the applicants' appearance, essays and activities. As a result, two girls were tied.

Marilyn King, daughter of Mrs. Yvonne King of Glenville and Mike King of Clay, is a sophomore at GSC. She is pursuing a major in English and a minor in Journalism and plans to teach in these fields. Marilyn's activities include being a member of the technical crew for the GSC Theatre productions "Bus Stop", "The Brave Little Tailor", "The Importance of Being Earnest" and

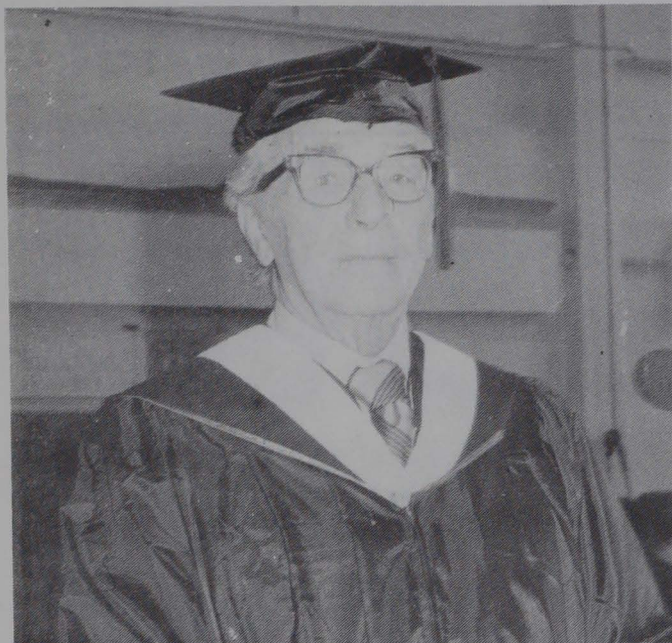
(Cont. on pg. 4)

GSC Representatives



Marilyn King

Wendy Elliot



Fred Barnett

Composer, GSC Friend Dies

*'Glenville College, we will love thee,
All through life and e'en in death
Love and treasures sing thy praises
With the last of quickning breath'—*

These words, penned in 1937 by Fred H. Barnett, in part depict his avid love for Glenville State College. Composer of the GSC Alma Mater, Mr. Barnett, retired attorney, died on Jan. 1, 1980 in the Camden Clark Hospital in Parkersburg.

A native Gilmer Countian, the former Alumni of the Year, Alumni president, Parade Marshall, Advisory Board member, and most loyal Glenville State College fan, Mr. Barnett, (Fred, as all his friends referred to him), was apparent at all Alumni Days, all Homecomings, all special occasions at the Alma Mater he loved so dearly. He began attending school here at the age of five, in a training school. He was graduated from Glenville Normal School in 1926 and from Glenville State College with a Board of Regents Bachelor of Arts degree in 1976. His family was rooted in Glenville—his father was county clerk, his mother taught at Glenville Normal, his sisters and brothers all attended here.

In a personal note to this writer, Fred comments on that day in 1937 when he penned the words on a B&O train en route from Clarksburg to Parkersburg. There was a big flood, according to Fred, and roads were flooded; therefore, he rode the train. He 'wrote the words on a daily expense sheet (small book) and changed only one word in the final draft. The music was composed within the next two days.' He accredited his writing the Alma Mater to the fact that he 'felt the school was unique so it should have an original Alma Mater (not a copy of something else).' He regarded the institution as a center of intellectual and social grace with almost a family-like relationship in which everyone knew everyone else.

What can be said about one whose entire life and loyalty centered around this institution of learning? Words can not immortalize a person, but Fred Barnett, with his ready smile, quick wit, impressive words and undying loyalty, is immortal to all who proudly sing or play his Alma Mater. No longer will he be seen playing the tune on the piano, as he insisted on doing at Alumni Day activities, but his words will be repeated over and over—and for awhile, we will remember. Even in his death, there is a hint of devotion to Glenville State College as his wife requested that flowers be omitted, but memorial tributes be made for a scholarship to Glenville State College. He is, fittingly, laid to rest in Otterbein Cemetery, near Glenville.

A true friend of Glenville State College has gone. The world is a better place for his having lived; Glenville State College is better for his having loved; and we, his bereaved friends, are better for his having lived and loved. Truly, in the words of Frank Munsey, Epitaph writer: 'Here lies a man.'

Yvonne King

STUDENT TEACHERS—

(Cont. from pg. 1)

Lola Mae Smith, Art K-12, Hamilton Jr. High, Worthington Elem.; Arthur Lynn Stalnaker, P.E. K-12/Safety 7-12, Pleasant Hill Elem., Calhoun Co. High; Jayne Ellen Tebay, P.E. K-12/Safety 7-12, Hamilton Jr. High, Emerson Elem.; Phillip Alan Thomas, P.E. K-12, Safety 7-12, Braxton Co. High, Burnsville Elem. and Middle; Larry Drew Waller, P.E. K-12/Social Studies 7-9, Weston Central, Weston Jr. High; Brenda Kay Weaver, Social Services and Attendance K-12, Special Ed. Dept.; Randy Blair Whytsell, P.E. K-12/Safety 7-12, Glade Elem., Webster Co. High; Daniel Paul Zakany, P.E. K-12/Health K-12, Webster Co. High, Glade Elem.

Georganna R. Barrett, Elem.; 1-6/Early Childhood N-K, Peterson Grade, Weston Central; Audrey Denise Biggers, Elem. 1-6/M.R. K-12, Sutton Elementary; Cheryl Ann Burns, Elem. 1-6/M.R. K-12, Normantown Elem.; Robin Elaine Butler, Elem. 1-6, Troy Elementary; Ann L. Carper, Elem. 1-6, Arnoldsburg Elem.; Debra Kay Cottrell, Elem. 1-6/Art 4-8, Ravenswood Middle, Jefferson Elem.; Gloria Carole Cox, Elem. 1-6/Science 4-8, Ravenswood Grade, Ravenswood Middle; Brenda Kay Delong, Elem. 1-6/M.R. K-12, Sumner, Jefferson; Charles Robert Du Gau, Elem. 1-6/Math 4-8/English 4-8, Walker Elem., Pleasants Co. Middle; Kimberley Ann Dye, Elem. 1-6/M.R. K-12, Gihon Elem.; Barbara Jane Gower, Elem. 1-6, Normantown Elem.; Branda Lee Hall, Elem. 1-6/Math 4-8/Social Studies 4-8, Gassaway Middle.

Ann Maxwell McCullough, Elem. 1-6/Social Studies 4-8, McKinley, Ravenswood Middle; Lucille Marie Mitchell, Learning Disabilities K-12, Nash; Sharon Elaine Montgomery, Elem. 1-6, Troy Elem.; Jim Morgan, Elem. 1-6/Science 4-8, Pleasant Hill; Rebecca Lynn Phillips, Elem. 1-6/EC-NK, Alum Bridge Elem., Camden ECE Center; Rose Mary Proctor, Elem. 1-6/M.R. K-12, Burnsville Elem. and Middle; Kathryn E. Hayhurst, Elem. 1-6, Leachtown; Richard E. Heffelfinger, Elem. 1-6/Social Studies 4-8, Pleasant Hill Elem.; Helen Frances Hemetek, Elem. 1-6, Ravenswood Grade; Eydie Jo Henry, Elem. 1-6, Tavennerville; Agnes A. Jordan, Elem. 1-6, Flatwoods Elem.; Mary Ester Lauderman, Elem. 1-6/ECE NK, Waverly; Janya Anita Luster, Elem. 1-6/M.R. K-12, Sutton Elem.; James O. Richards, Elem. 1-6/Social Studies 4-8, Emerson, Ripley Middle; Diana Sue Roberts, Elem. 1-6, Neale; Kenneth Edward Roberts, Elem. 1-6/Social Studies 4-8/Math 4-8/M.R. K-12, Sutton Middle; Robert Allen Sadler, Jr., Elem. 1-6/Social Studies 4-8, McKinley, Ravenswood Middle; Jay Kevin Simonton, Elem. 1-6/Science 4-8, Rayon, Ravenswood Middle; Janice Karen Smith, Elem. 1-6/ECE-NK/Math 4-8, Jefferson, Ripley Middle; Julius Morgan Smith, Elem. 1-6/M.R. K-12, Normantown; Katherine Lynn Spencer, Elem. 1-6/ECE-NK, Alum Bridge Elem., Camden ECE Center; Deborah R. Stal-

(Cont. on pg 5)

Predictions for the 80's

The 70's, if you haven't yet noticed, is now only a memory and food for historians. I won't bore you with a summary of those thrilling years, you were there, at least in body if not totally in mind. What I will bore you with are my thoughts on the coming decade. This is sort of like the National Enquirer and if you can waste your time reading it, if indeed you can read, you can take several minutes from your busy schedule and peruse the following.

First of all, the "me" generation of the seventies, those who gave so much to no one but themselves, will begin to slowly descend into whatever little world they have deemed best for themselves; to be replaced by a more receptive body that realizes that world problems, which have multiplied like boisterous bunnies, can only be remedied by involvement and commitment instead of determined resignation. Even those of us who preferred 70's isolation may begin to carry banners. I might even volunteer myself. I hope Uncle Sam didn't hear that.

Because of an over reaction to military threats in the world and the subsequent call for an increase in defense spending and due to a massive government sponsored effort to quench the insatiable energy thirst of Americans, I fear social programs, programs important, vital to the existence of the elderly, handicapped, disadvantaged, will unduly suffer. I hope not but I see it as an inescapable conclusion.

The Ugly American will become much uglier. The ego of America is going to be severely damaged. Let's face it, a lot of countries don't like us and more are going to follow suit. It's fashionable to step on someone's finger while they're hanging onto a ledge. And though I don't think we're in as much trouble as the contestants for the most difficult job in the world would have us believe, times will be a little harder.

One more thing; in January of 1981, George Bush will be sworn in as President of the United States.

Tim Brady, Editor



THE GLENVILLE MERCURY

(USPS 220040)

The Student Newspaper

Phone 462-7361, Ext. 252

Published weekly and entered as second class mail at the Post Office at Glenville, West Virginia 26351. Subscriptions \$5.00 a year.

Editor-in-Chief Tim Brady
Associate Editor Becky Triplett
Assistant Editor Michele Bruce
Sports Editor Cheryl Cline
Photographer Dale Sparks
Typists Carron Smith and Janie Thabet
Advertising Manager Mike Maloney
IBM Operators Kay Peters and Della Seaman
Circulation Manager James Sabo
Reporters Illa Jean Boggs,
Debbie Moore, Carron Smith, Jim Wright
Cartoonist Bill Pitzer

Member of the
ASSOCIATED
COLLEGIATE
PRESS



GREEK NEWS

Computer Club

The GSC Computer Club held its first meeting of the semester on Jan. 22. It was decided to prepare a scrapbook to commemorate the club's first year of existence. Members decided to offer a tutoring service for computer students, particularly those students in the Introductory Computer class. The Computer Club elected to participate in the Muscular Dystrophy activities scheduled for March. Also discussed was the possibility of holding a Computer Awareness Day later in the semester, with programs and tours for visiting high school students as highlights of the day.

Meeting time for Computer Club has been changed to 4 p.m. on the second and fourth Tuesday of each month. Meeting are held in 101 AB.

Joint Rush

Formal rush was held this week. Approximately 37 girls went through.

A Joint Rush party was held in the Ballroom on Sunday. The Rushes were able to meet girls from the Delta Zeta Sorority and the Sigma Sigma Sorority. Refreshments were served and representatives from both sororities performed a skit.

On Monday night the Coke Parties were held. Theme Parties were an event of Wednesday for the DZ's and Thursday for the Sigma's.

Preference parties will be held on Sunday. Sigma Preference will be from 6:00-7:00 p.m. and the Delta Zeta will be 7:30-8:30 p.m. Silence period and the signing of preference sheets will be from 8:30-9:30 in Dean Vaughn's office.

Any girls that didn't go through Formal Rush but are interested in sorority life may talk to any member of a sorority for information on picking up an open bid.

Lambda Chi Alpha

The Brothers of Lambda Chi Alpha have begun the second semester on the right foot. Already we are proud to welcome four new associate members. These men are Rick Haveron, Jeff Furr, Steve Altizer and Brent Brady. These men experienced our pinning ceremony on Tuesday evening. Any other young man interested in what Lambda Chi Alpha can offer you, feel free to contact any brother.

All brothers are reminded to get those dues in so we can get some parties rollin'.

Our first Smoker was a great success under High Delta Keith Enoch. Kegs of refreshments were enjoyed by all.

Closed Ball has been set for April 26 at the New Sheraton Inn, in Parkersburg. Bro High Epsilon Bob Dinkler should be congratulated for filling some big shoes admirably.

Awards for this week are: A-H-Here Simon!; KCUF-Keith Enoch for a great smoker; P.O.W.-The Roscoe; WINO-The Roscoe.

CHI'S RECEIVE HIGHEST GPA

The Lambda Chi Alpha received the highest grade point average among the three fraternities for the Fall '79 semester. Their average was 2.3720 while Theta Xi's came in second with 2.2676 and the Tau Kappa Epsilon Fraternity third with a 2.2365 average.

Lambda Chi's receiving a 3.00 average or better were Robert Dinkler, Alan Farnsworth, Joseph Hickman, Richard Moreland, Mike Murphy, Tom Phillips, Dale Thrasher, and Randy Whytshell.

Steve Gandee and Brian Jones received a 3.00 average or better for the Theta Xi's.

The TKE's with a 3.0/average or better were Pat Beebe, Tim Carter, Steve Casto, Dave Eckhart, Todd Gerber, Gary Jones, Bob Miller, Jeff Rosselot, Kevin Stout, and Drew Waller.

The overall men's average for the 1st semester was 2.3647 and the fraternity average was 2.3015.

Sigma Sigma Sigma

The Sisters of Sigma Sigma Sigma held a special grub meeting on Jan. 16 in Sigma lounge.

The sisters had a pizza party on Thursday and work on favors for the rush parties.

Becky Carr was chosen as Panhellenic President to replacing sister Desi Skinner who was married in December.

Several new chairmen were chosen for this semester: Becky Bennett, Music; Shelly Nichols, Parliamentarian; Bev Skinner, Scrapbook; Cindy Russell, Joyce Fitzwater, Jayne Tebay and Shelly Nichols, Founders' Day & Walton House.

The sisters would like to thank those girls who went through rush. We hope that you had a nice time and made some new friends.

SIGMAS' GPA HIGHEST

Grade point averages for the '79 Fall semester show the Sigma Sigma Sorority received a slightly higher average over the Delta Zeta Sorority. The Sigmas received a 2.8889 average, and the DZ's received a 2.8445 average.

Those girls in the Sigma Sigma Sorority with an average of 3.0 or more were Melinda Baisden, Kim Bickel, Debbie Carson, Becky Criss, Debbie Grogg, Shelia Hamden, Brenda Heatherly, Pam Linger, Mary McLaughlin, Beth Meredith, Mary Sergeant, Bev Skinner, and Tamira Wiegell.

Those Delta Zeta's with an average of 3.0 or better were Rhonda Anderson, Michele Bruce, Kim Buckley, Annette Bumgarner, Shelia Drennan, Dena Dunlap, Wendy Elliott, Bev Hamric, Joyce Jarrell, Becky Kirkpatrick, Georgetta Massie, Jenny Sheppard, Janice Smith, Donna Steele, Kathy Sullivan, and Deena Warner.

Chi Beta Phi

Chi Beta Phi will hold it's regular bi-monthly meeting Sunday,

Jan. 27, at 6 p.m. in the Vandalia Room in the Pioneer Center. All members are required to attend and interested students are also encouraged to come. Guest speaker for the evening will be Mike Holley, a current GSC student, who will present a slide presentation describing his experiences as an exchange student in South America.

Ladies

The Ladies had their first meeting for this semester. There was a discussion about several projects for this semester. New officers will be elected at the next meeting, so all ladies please be there.

Help Wanted!!! Members are needed for the college Choir. This one credit hour class requires little or no experience. Sign up today by contacting Dr. Raymond Jones—313 AB.

The last day for seniors to order caps and gowns is Friday, February 1 1980. The cost is \$5

The last day for seniors to order caps and gowns is Friday, February 1, 1980. The cost is \$15 dollars. Orders are to be placed in the Alumni Office.

Anyone interested in a Young Republican organization on campus, please contact Becky Gilchrist or Jennie Spencer in Pickens Hall.

NOTICE! All news must be in the MERCURY Office by noon Wednesday to be printed in the week's edition of the MERCURY. Any news received after that deadline will be printed the following week.

C&P BEGINS TEL-A-VISIT

C & P Telephone Co. has instituted an optional Tel-A-Visit plan for residence customers, which features discounts on in-state long distance calling late at night.

Customers pay \$1.50 a month to subscribe to the services and then receive a 50 percent discount on all intra-state long distance calls placed between 11:30 p.m. and 8 a.m. The discount applies only to direct-dialed calls. It does not apply to calls made to points outside West Virginia.

Long distance calls made between 11 p.m. and 8 a.m. are already discounted 60 percent from normal daytime rates. Under Tel-A-Visit, calls made from 11:30 p.m. to 8 a.m. are discounted 50 percent from the night rates.

For example, a five-minute direct-dialed call from Morgantown to Charleston costs \$1.59 under daytime rates. The same call costs 63 cents at night rates. With Tel-A-Visit, the call would cost 31 cents.

The new plan will remain in effect as a trial for a year. The West Virginia University of Texas, and a L.L.M. from Public Service Commission ordered C & P to implement a Tel-A-Visit service in its Oct. 12 interim decision on C & P's 1979 rate request. C & P customers can to entire institutions. Professor Cady subscribe to the service by calling a business office listed in the front of the local directory.



Alpha Psi's new members include Jerri Riley, June Nohe, Jami Riggs, Gene White and Robey Godfrey.

Alpha Psi Omega Initiates 6

The National Dramatic Honorary Fraternity, Alpha Psi Omega, became active again with the initiation of six new members. Alpha Psi was created at Fairmont College in 1926. Therefore, Fairmont has the Alpha Cast-in keeping with the theatre idea.

The new members are June Nohe, Gene White, Jeri Riley, Robey Godfrey, Kathy Sullivan, and Sheri Wilson. Old members are Jami Riggs and Debbie Cottrill. The initiation was held Thursday evening, Dec. 13, at the home of Mr. and Mrs. Edward

McKown. Mrs. Linda McKown is the advisor. Also present were Mr. and Mrs. Robert Gainer. The four faculty and staff members are lifetime members having been members of the Theta Alpha cast here at Glenville.

The evening involved initiation of new members, election of officers, and refreshments. New officers are President, Jeri Riley; Vice-president, Robey Godfrey; Secretary-treasurer, Kathy Sullivan.



Thomas C. Cady

Cady Addresses Faculty

During the week of registration, the faculty attended a lecture given by Professor Thomas C. Cady, Professor of Law at WVU's College of Law since 1966. Professor Cady also has a B.S.

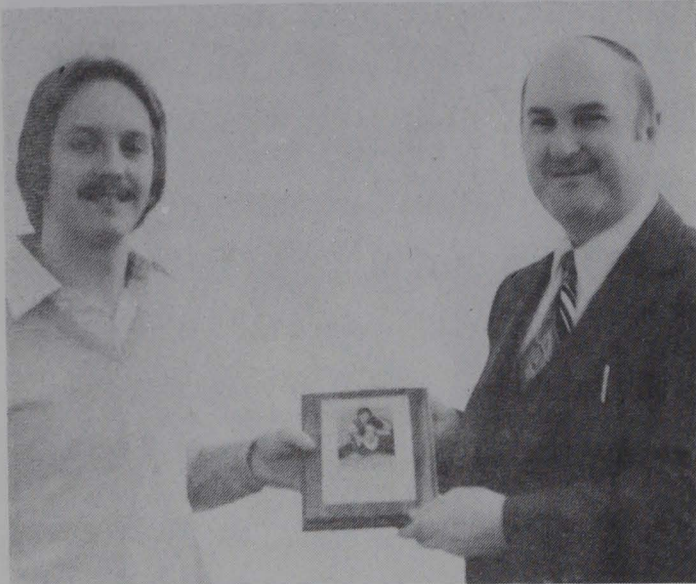
from Rice University, a L.L.B. from the University of Texas, and a L.L.M. from Georgetown University.

The lecture concerned liabilities that pertained to individual instructors and illustrated several examples of probable liability responsibilities of an instructor in the classroom or on a field trip.

Professor Cady said that there was a "law explosion" in the 1960's and 1970's. Society was becoming more right oriented and more laws were being instituted.

He stated that there were those issues in every legal problem: 1. Has a liability been committed? 2. Is there a remedy? 3. Can the remedy be enforced?

Finally, Professor Cady mentioned the part that negligence and fault and no fault policies play in such legal problems.



David Tebay, local chairman for Muscular Dystrophy, is shown as he presents Dr. Simmons a plaque commending Glenville State College's participation in last year's drive. Muscular Dystrophy drive this year will take place in March.

Heart Association Holds Annual 'Kick-off' Sunday

The West Virginia Chapter of the American Heart Association has set Jan. 27, 1980 as their annual kick-off date for members, volunteers, and friends. The event is scheduled for 4 p.m. on the 4th floor student lounge at WVU Medical Center, 3110 MacCorkle Ave., S.E., Charleston, W. Va.

"The purpose of the kick-off," according to Dr. William Carter, President of the West Virginia Heart Association, "is to stimulate enthusiasm among Heart volunteers for Heart Month in February. We also have an excellent program planned for them, and the general public, on the kind of activities sponsored by the West Virginia Heart Association. We urge anyone interested in the American Heart Association to come out Sunday, Jan 27, and see exactly what the local Heart units are doing to benefit the community."

Mrs. Yvonne King, state secretary of the West Virginia Affiliate Board of Directors, will attend the kickoff. The Public Information Committee, of which she is also a member, will meet for brunch, prior to the 1 p.m. Board of Directors' meeting.

Mrs. King, Gilmer County's Heart Publicity Chairperson, will also participate in a briefing session concerning use of publicity materials.

CONTRIBUTIONS URGED

The Fred Barnett Memorial Scholarship Fund was established in January of 1980 by Mrs. Fred Barnett in lieu of flowers for the deceased. Contributions to this fund may be of any amount—\$1, \$5, or whatever amount the donor wishes to contribute. Any amount, regardless of size, will be greatly appreciated. The Scholarship will be awarded to a music student at Glenville State College.

Scheduled on the program agenda are Donald A. Kopp, former Speaker of the West Virginia House of Delegates. Kopp has been appointed 1980 Heart Fund Chairman and will speak on why he became involved with the American Heart Association.

Ms. Mary Oliverio, 1980 Youth Heart Fund Chairman, will share her experiences relating to a family member who had to have open heart surgery.

A first-person look at a Coronary-Care Unit will be taken via videotape, narrated by Huntington physician, William Schmitt, M. D. Dr. Schmitt will explain the various machines and techniques used on cardiovascular patients. The film, produced at St. Mary's Hospital in Huntington, hopes to familiarize the public regarding why and how these machines are used.

Program attendants will also get a chance to taste some "creative cuisine" prepared from the Heart Association Cookbook; get an update on Cardiopulmonary Resuscitation (CPR) training; and learn how volunteers can effectively publicize Heart Fund Programs on a local level. These are all planned exhibits participants can expect to see at the Heart Fund Kick-off.

CLEP examinations are administered each Wednesday night at 6:00 p.m. in the Career Counseling offices, located on the first floor of the Pioneer Center. Students who wish to take CLEP examinations during this semester should contact Janet Gainer, Career Counselor.

As of June 1, 1980, Glenville State College will require students to take the General Examination in English Composition with the essay section. The essay section has not previously been required for CLEP credit for English 101 and English 102.

GIRLS CHOSEN—

(Cont. from pg. 1)

three one-act plays. She is also in choir and is rehearsal pianist for "Camelot".

Wendy Elliot from Ranger is the daughter of Mildred Elliot Adkins. Wendy's major is Speech Pathology and her future plans are to work at a clinic or hospital helping people to overcome their speech handicaps. Her activities are MENC, GSC feature twirler, Choir, band, forensics, Camerata singer, V.P. of Ladies of the White Rose, and a member of the DZ Sorority. She has now transferred to Marshall University.

Both contestants will now represent Glenville in the National Glamour Girl Top Ten College Issue of "Glamour". If selected as one of the top ten winners, they would receive a trip to New York in May, June or July, and while there enjoy entertainment furnished by "Glamour." Also, a \$500 cash prize will be given to each winner.

In April after the national competition is over the Top Ten winners and those who received honorable mention will be notified along with their respective colleges. Both Top Ten winners and honorable mention winners will receive recognition in the August College issue of "Glamour".

Women's Day Slated Feb. 19

On February 19th, 1980, the Office of Student Affairs and the Panhellenic Council will sponsor a bus trip to the West Virginia State Capital so that interested men and women from Glenville State College may participate in the 'WOMEN'S DAY IN THE LEGISLATURE PROGRAM' sponsored by the West Virginia Women's Commission. Cost of this program will be \$3.00. This fee includes program materials, transportation to and from Glenville State College, and a luncheon with members of the Legislature.

Interested individuals should contact the Office of Student Affairs for reservations and further information as soon as possible.

Reservations will be taken on a 'first come first served' basis.

Council Meeting Set for Jan. 30

Student Council for Exceptional Children will meet on Wednesday, January 30, 1980 at 4:00 p.m. in room 101 of Clark Hall. This organization is open to anyone interested in special education and/or exceptional children. It is especially recommended for students with a minor in special education. The meeting agenda will include discussion of: election of officers and the possibility of a trip to Philadelphia April 21-25, 1980 to attend the National Council for Exceptional Children convention. If you are interested but cannot attend the meeting, please get in touch with Mrs. Salsbery, faculty advisor, M2-4 Clark Hall. (Anyone who paid dues by check during the fall semester should attend the meeting or contact Mrs. Salsbery.)



'Janice' appeared on campus Thursday, Jan. 17 at a 'Back-to-School' Mix.

Janice Replaces Mainstream

"Anyone who attended the back to school mix would have been pleasantly surprised," was the reaction Dean Billips had to "Janice". "Janice" was a back-up group, sent by Fisher & Association Entertainment, Inc. when the previously scheduled group "Mainstream" could not come.

The group is composed of Janice Saddler, lead vocalist, her husband, Reggie Saddler, lead guitarist, and her brother Freddie Morrison on bass. "Janice" has toured Tokyo, Japan with "War"

and Patti Page, has toured Geneva, Switzerland, and has also had a concert at Disneyland. The group "Janice" also did a guest appearance with the Redd Foxx Show at the Hilton Hotel, which resulted in their being held over for 13 weeks.

The group, Billips feels, was well accepted even though they were unknown to GSC. "Janice" has an enthusiasm which is infectious and true. The group originated from North Carolina, and was formerly known as the "Reggie Saddler Revue."

Beginning Folk Guitar will be offered on Tuesday evenings from 6:30 to 7:30. Mr. Rick Roberts, Gilmer County Artist-in-residence, is the instructor. The class will have something to offer students who already have proficiency on the guitar and everybody is welcome.

Phi Beta Lambda will be holding a drawing for 50 gallons of gasoline. Tickets may be obtained from any PBL member. The drawing will be held in room 101 AB at 6:30 on Wed., Feb. 6. The winner need not be present.



Registration day was busy although nearly half the students were pre-registered. Here, a last minute check on class enrollment is made by Bobby Baker on a CRT terminal.

Hoopsters Continue Season

Alderson-Broadus

WV Wesleyan

Although GSC students took a winter break the basketball team had several games during this break and during their first two weeks of the semester. A summary of these games follows:

Marietta Tournament

The GSC Pioneers travelled to Marietta, Ohio to compete in the Marietta tournament on Dec. 28-29.

The Pioneers' 52-51 victory handed them their 2nd Shrine tourney title in 9 years. The Pioneers led during the 2nd half by at least 8 points but Marietta had several long range shots which brought Marietta closer to the Pioneers' lead. GSC hit 23 of 54 shots for 43 percent with Don Bullett trying for 20 points, Paul Wills and Doug Watts for 9 each, Mike Forbes for 10 and Randy Anderson and Ernie Gilliard for 2 each. Don Bullett and Randy Anderson were selected to represent the Pioneers on the All-Tourney team.

Alderson - Broadus topped the Pioneers by 92-91 in WVIC action on Jan. 14. Doug Watts scored 25 points for the Pioneers while Mike Forbes added 22 points.

Concord

The Concord Mountain Lions defeated the Pioneers 77-66 in the WVC. The Pioneers led 6-4 early in the game but later fell behind and could not regain their lead as Concord took a 27 halftime lead and were outscored in the 2nd half by 40-39. Glenville hit 28 of 70 shots for 41 percent and pulled down 42 rebounds.

Leading Pioneers included Mike Forbes with 18, Don Bullett with 14, and Doug Watts with 13.

The Pioneers dropped to a 7-7 record on Tuesday as WV Wesleyan handed the GSC a 76-67 loss.

The Pioneers took an early lead which bounced back and forth to cut the lead to 37-36 at the half.

The Pioneers hit 50% of their shots and pulled down 39 rebounds.

Phillip Thomas led the Pioneers with 22 points and 13 rebounds. Mike Forbes scored 17 and Don Bullett, 10. The Pioneers fell to a 4-5 league record.

(Cont. from pg. 2)

aker, Elem. 1-6/ECE-NK, Weston Central Elem., Peterson Grade; Vicki

Lynn Winland, Elem. 1-6, Gihon; Mary Ellen Williams, Elem. 1-6, Gassaway Middle.

Question! Do you think the U.S. should boycott the Olympics? Write the Mercury and let us know.

CHI'S LEAD INTRAMURALS

With two intramural sports finished and a third starting up this week, Lambda Chi Alpha remains seated on top over ten other teams. Lambda Chi, the third place finishers in water polo, are 45 points ahead of overall second place holders, the Stoppers. The Stoppers moved up to second place by winning the water polo crown.

TKE soared to third place from eighth in the last standings, by finishing both 2nd and 4th with two different teams in polo.

The next sport is basketball in intramural action. Rosters should be turned in to Dr. Dollgener by the last part of this week. Teams are: nine men on the roster with 5 men on the floor. A \$2.00 entry fee is required with the first games on Monday, January 28.

Below are the current team standings:

TEAM	POINTS
1. Lambda Chi Alpha	400
2. Stoppers	355
3. TKE	265
4. Dad Lilly's Gang	225
5. D.U.T.	170
6. Illiterates	165
7. Iran	110
8. Road Runners	105
9. Phi Beta Lambda	
Loads	100
10. Theta Xi	90

Ladies Triumph!

The Lady Pioneers have continued their winning streak with victory number eight as they defeated the Lady Falcons of Fairmont, 86-55.

The Ladies led at halftime 39-27 and outscored them in the second half 47-28.

Pam Minigh paced the Pioneers with 26 points, Kim Goodwin and Debbie Grogg added 12 each to keep the Lady Pioneers' rank behind the University of Charleston in recent state ratings.

Debbie Grogg pulled down 21 rebounds and the Pioneers hit 58 percent from the floor.

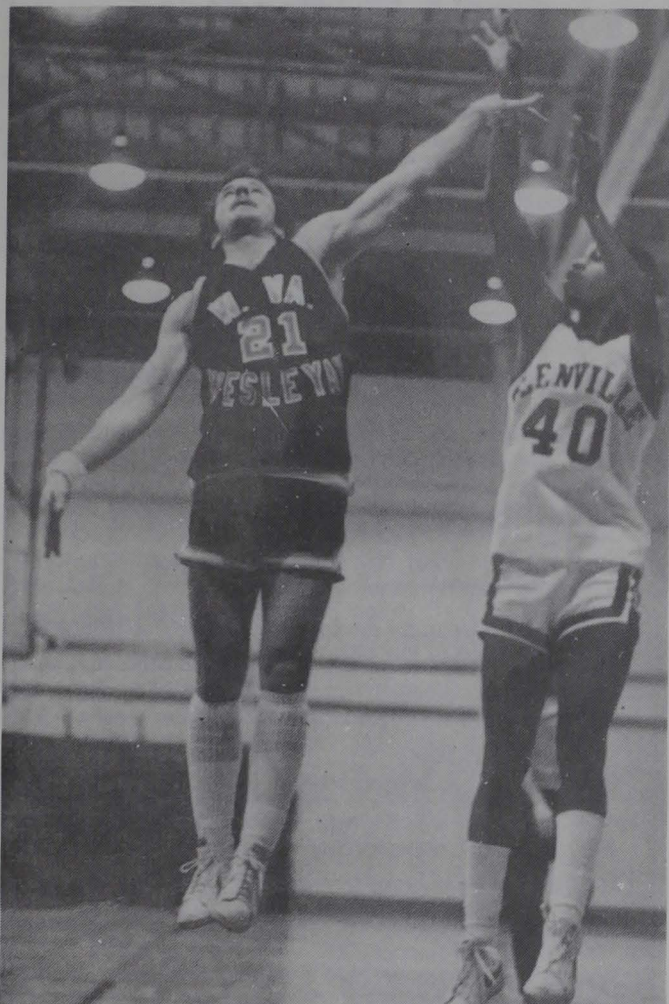
Ladies Listed In Ratings

As of December 19, 1979, the W.V.I.A.A. Women's Basketball Power Rating had listed, the Lady Pioneers of Glenville State, with a 130.0 power rating, a 7 - 0 record and second place in the standings of West Virginia's women's basketball. They follow highly regarded University of Charleston, who is 3 - 0, and is three percentage points ahead of the G-Women.

Much credit is due to these women and their head coach, Tim Carney. Coach Carney in his first year at the helm has stirred some excitement and confidence into the team and fans at G.S.C. Coach Carney has created a nucleus of players that denotes scrappy defense, a lot of hustle, and more importantly - teamwork. Because of this influence they will enter into the new year with an unblemished record.

Leading the charges of the G-Women is freshman Pam Minigh. The former Gilmer County standout is

the leading scorer, field goal percentage, an assist woman. Minigh is averaging 21.5 points per game, while shooting a blazing 52 percent from the floor. Minigh has a high point out-put of 33 points in one contest, already. She is followed by forward Pam Linger, who is averaging 10.4 ppg., with an output of 22 in one contest. In the rebounding department Debbie Grogg is carrying the load in the middle. Grogg is averaging 8.3 carooms per contest, with help from Minigh (7.6 rpg.), Linger (7.4 rpg.), and Bickel (6.6 rpg.). Pam Minigh is leading in the assist department with a 6.3 average per game. She is followed by junior point-guard Mary Zangari who is dishing out 5.1 assists per contest. The last department is that of foul shooting percentage. Pam Linger is hitting 85 percent of her charity shots (34-40), to lead this category. Kim Bickel and Pam Minigh are right behind with 75 percent shooting.



Don Bullett shoots for two in a piece of basketball ballet.



Phillip Thomas awaits the ball while being guarded by Tim Dixon of Wesleyan.



Paul Wills tips in two points for the Pioneers against Wesleyan.

COUNTRY LIFE NATURAL FOODS

New Hours:

Monday 9a.m.-6p.m.
Wednesday 9a.m.-6p.m.
Thursday 9a.m.-6p.m.

Campus

Pub



GLENVILLE
WV



PG-13 PARENTS STRONGLY CAUTIONED
PANAVISION A PARAMOUNT PICTURE

Wed., Jan. 30

Auditorium

7 p.m. & 9 p.m.

FREE

New & Recommended

On Human Nature, by Edward O. Wilson. (Bantam, \$3.95.) Is all human behavior genetically predetermined?

Sideshow, by William Shawcross. (Pocket, \$2.95.) Kissinger, Nixon and the destruction of Cambodia.

The Praise Singer, by Mary Renault. (Bantam, \$2.95.) Splendor, power and intrigue in ancient Greece: fiction.

Association of American Publishers

Campus Paperback Bestsellers

1. **Chesapeake**, by James Michener. (Fawcett, \$3.95.) Multi-family saga along Maryland's Eastern Shore: fiction.

2. **Nurse**, by Peggy Anderson. (Berkley, \$2.50.) Personal and professional life of a nurse in a city hospital.

3. **Mommie Dearest**, by Christina Crawford. (Berkley, \$2.75.) Life with mother: Joan Crawford.

4. **A Distant Mirror**, by Barbara W. Tuchman. (Ballantine, \$6.95.) Europe in the 14th century.

5. **Scruples**, by Judith Krantz. (Warner, \$2.75.) Rags to riches in the fashion world: fiction.

6. **Fools Die**, by Mario Puzo. (NAL/Signet, \$3.50.) Casino gambling and its fallout: fiction.

7. **Pulling Your Own Strings**, by Wayne W. Dyer. (Avon, \$2.75.) How to master your life.

8. **The World According to Garp**, by John Irving. (Pocket, \$2.75.) Hilarious adventures of a son of a famous mother.

9. **The Culture of Narcissism**, by Christopher Lasch. (Warner, \$2.95.) American life in an age of diminishing expectations.

10. **Second Generation**, by Howard Fast. (Dell, \$2.75.) On-going story of Italian family in "The Immigrants": fiction.

Compiled by *The Chronicle of Higher Education* from information supplied by college stores throughout the country. December 31, 1979.

GLENVILLE WESTERN AUTO

GUNS
BOWS
STEREOS
STEREO EQUIPMENT
LARRY CHAPMAN - OWNER

*On paper,
we're
the perfect
bank for
you.*

Use our paper for your shopping, bill paying, gift giving. Checks written on our bank save needless errands and give you an easy-to-file receipt. Check with us soon.

KANAWHA UNION BANK

Member F.D.I.C.

Glenville, W. Va.

Summers Pharmacy
PRESCRIPTION DRUGGIST
HOURS 8-8 PM



WE CARE
pregnancy testing, counseling,
birth control, abortion
CONFIDENTIAL
Charleston 344-9834

LOGAN'S RESTAURANT

OPEN SEVEN DAYS

HOURS:

MON.-SAT. 6AM-8PM

SUNDAY 7AM-3PM

CALL IN ORDERS

TAKE OUT

PHONE 462-846C

LOCATED WHERE THE CONRAD USED TO BE

Ask me about Life Insurance for Students and Young Adults

The earlier you start it, the lower the premiums. And the sooner important cash values begin to build for the future. Call me for details.

R. GREG SHANTZ

7 N. Lewis Street
Glenville, WV 26351

Bus. phone: 462-7131
Res. phone: 462-5829



State Farm Life
Insurance Company
Home Office
Bloomington, Illinois

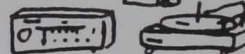
TOWNE BOOKSTORE

LP's

Leonard Skynard--"Gold & Platinum"

8-Tracks

Pick Floyd--"The Wall"



Cassettes

Led Zeppelin--"In Through the Out Door"

GILMER COUNTY MENTAL HEALTH CLINIC

Individual and Family Counseling
For Adults and Children
Help with your personal problems.
462-5716

GREAT FOOD VALUES!!

PIONEER'S GROCERY

Food Stamps Welcome
Monday - Saturday
8 AM - 9 PM

Riichi & Assoc.

Aspiring models needed by certified photographers. If interested phone: 354-7270, or write P.O. 177, Grantsville, WV.

SEARS

Catalogues Available

Authorized Catalog
Merchant

405 N. Lewis
Phone 462-7374

A A-1-A VACUUM SWEEPER EXCHANGE & SERVICE



MR. VACUUM
CLEANER

NEW & RECONDITIONED
VACUUM CLEANERS FOR SALE

RAINBOW-WILSON DISTRBT

485-5434

MURDOCH AV & LAKEVIEW DR (NEXT TO 7 ELEVEN STORE-SOUTH OF THE MALL)

EUREKA

FIDELITY QUEEN



HOOVER

Kubly

Royal

ELECTROLUX
Compact

HOOVER FACTORY TRAINED MECHANICS USING
GENUINE HOOVER PARTS

REPAIRS ON MOST MAKES

BAGS-HOSES-PAPER BAGS-BELTS-
CORDS-BRUSHES-SWITCHES ETC.

Restaurant
Bernie's
Glenville, WV

Featuring the Kanawha Room

Phone 462-5272

EXPO BARBER SHOP

HAIR STYLING

Roffler Sculpture Cut

System

(Beside
the Pizza Shop)