

# The Glenville Mercury

Number 2

Glenville State College, Glenville, West Virginia

Wednesday, September 2, 1981

## New Yearbook Reviewed

Given a choice, to receive the *Playboy* Calendar or to review the 1980 yearbook 'Kanawhachen', I would chose the former. However, while waiting for Hugh Hefner's call, I'll pass on a few comments that were jotted down during a premeditated perusal of the latter.

The theme, 'Glenville State College Country Store', left me somewhere between the chewing tobacco and the horse harness sections. Perhaps, if I water my dry imagination, I could possibly grow those sections

listed on page five. But, it will take a bumper crop to include the 'department for executives' in a country store.

There are spelling errors, faulty captions, headlines that fail to reach out, and several stories that should be more colorful. Let's move on to the positive.

The Country Store cover, by George Harper, is obviously the work of an artist. I had the urge to pick up the letter in the street.

As you leaf through the 200

(cont. on p. 7)

## Food Service Hours Outlined

Now the students of GSC have a choice when it comes to mealtime. The students can either eat in the cafeteria, or sweet/pizza shop. This is the last stage of Joe Drahnak, Food Service Director's, plan to have all on-campus students on the food coupon system, which was initiated on a trial basis two years ago.

The new system is based on the physical facilities of the college kitchen, cafeteria, and sweet/pizza shop. Based upon last year's data, approximately 68 percent of the food coupons were used in the sweet/pizza shop, while the other 32 percent were used in the college cafeteria.

Due to the inflow of students between the hours of 4-6pm, pizza will be sold only by the slice. However, submarines, sandwiches and colas will also be sold. After 6pm students may order whole pizzas. For the lunch-time crowd, hamburgers, steak sandwiches, cold plates, cottage cheese, yogurt and deserts will be sold. The hours for lunch will be 10:30am to 1:00pm. The regular cafeteria breakfasts will be served from 7-8am. At 8am a continental breakfast will be served which will include sweets, donuts, cereal, and fruits. A new restaurant menu is also being planned and will be open from 6:30 to 8:30 with reservations only.

One major change in the cafeteria will be that students must now pay for second helpings of meat and vegetables. The salad bar and beverages will be unlimited. The Food Service Director also hopes to have ice cream for sale by next week.

## News Staff Named

Michele D. Bruce, a senior majoring in English with minors in Journalism and Political Science, will lead the 1981-82 *Mercury* staff as Editor-in-Chief. Assisting the Editor will be Becky Triplett, Associate Editor. The rest of *Mercury* staff is as follows: Steve Keenan, Sports Editor; Debbie Moore and Rick Haveron, photographers; J.D. Brooks, Copy Editor; Betty Wells, Advertising Manager; Lou Fryman, Marilyn King, and Rhonda Anderson, IBM Operators and Typists; Carron Smith and Terry Mullooly, Circulation Managers; and Cheryl Keenan, Janice Boggs, Steve Keenan, Jeannetta Mick, Terry Mullooly, and James Quinn, reporters.

The *Mercury* staff is looking forward to a productive year under the supervision of advisor, Mrs. Yvonne King.

The *Mercury* will be distributed on Wednesdays this semester. Deadline for organizational news and other items will be noon Monday.

If this conflicts with organizational meetings, contact a member of the staff for other arrangements.



Forty-four student teachers are preparing to venture to area schools to begin their professional semester. Student teaching will begin September 21 after a four week preparatory block class. (Photo by Don Phillips)

## Students Prepare For Teaching

A total of 44 student teachers will be leaving on Sept. 21 to tackle the educational world. Listed below is the name of the student, his prospective teaching field(s) and the school he will be teaching in. Once again the basic 3 R's will reign.

Kenneth Paul Anderson, Biology 7-12, General Science 7-12, Braxton Co. High; Mark Allen Barnhart, Business Education 7-12, Physical Education 7-12, Lewis Co. High; Rebecca Criss Batten, Physical Education K-12, Safety 7-12, Blennerhassett Jr. H., Blennerhassett Elem.; Michael Lee Branch, Social Studies 7-12, Parkersburg High; Marthana A. Bunn, Math 7-12, General Science 7-12, Braxton Co. High; John Timothy Butler, Social Studies Comp. 7-12, Art 7-12, Braxton Co. High; Michael Riley Cahil, Social Service and Attendance, K-12, Kanawha County Board of Education; Belinda Jean Corkrean, English 7-12, Social Studies 7-9, Braxton Co. High; Madeline P. Crowder, English 7-12, School Library-Media K-12, Social Studies Comp. 7-12, Nicholas Co. High, Beaver Elem.; Pamela Cool Dalzell, English 7-12, Webster Co. High; Edward Edmond Evans, Biology 7-12, General Science 7-12, Richwood High School; Georgann G. Faris, Social Service and Attendance K-12, Kanawha County Board of Education; Daniel Paul Fiedorczyk, Physical Education 7-12, General Science 7-12, Wirt Co. High School; Michael Fragassi, Physical Education K-12, Safety Education 7-12, Sutton Elem., Braxton Co. High; Rebecca Gilchrist, Social Studies 7-12, Business Education 7-12, Parkersburg High; Flicka Graves, Social Service and Attendance K-12, Raleigh County Board of Education; Maureen Sue Hite, Physical Education K-12, Social Studies 7-9, Lewis Co. High Sch., Brooksville Elem.;

Sharla Ann Hoffman, Business Education Comp. 7-12, Williamstown High; Beverly Ann Isner, Business Education Comp. 7-12, Wirt Co. High Sch.; Cathie Mae Jones, Physical Education K-6, Ripley Elem.; Dianna Jean Kelly, Physical Education K-12, Safety Education 7-12, Wirt Co. High, Elizabeth Elem.; Rick Lee Kinder, English 7-12, Math 7-9, Spencer High School; Gary L. Knight, Social Service and Attendance K-12, English 7-12, Lewis Co. Bd. of Education, Wirt Co. High Sch.; Kenneth Wayne Kuhl, Physical Education K-12, Spencer Elem. and Jr. High; Grady Lee Lamb, Math 7-12, General Science 7-12, Lewis Co. High Sch.; Timmie Ann Lilly, Business Educ. Prin. 7-12, Nicholas Co. High; Gary Lee Looney, Art Education K-12, Spencer Elem. and Jr. High; Kevin McCartney, Business Educ. Prin. 7-12, Calhoun Co. High; David Alan Meadows, Physical Education K-12, Social Studies Comp. 7-12, Mineral Wells Elem., Parkersburg South High; Gerry Clayton Myers, Physical Education K-12, Safety 7-12, Jane Lew Jr. High, Peterson Elem.; Vincent David Notice, Social Studies 7-12, Braxton Co. High; William Lamont Ratkovich, General Science 7-12, Math 7-9, Blennerhassett Jr. High; Lisa Rexann Smith, Business Educ. Comp. 7-12, Parkersburg High; Rebecca Jane Wagner, Physical Education 7-12, Art 7-12, Lewis Co. High Sch.; Paul W. Wills, Physical Education K-12, Safety 7-12, Burnsville Elem. and Middle; Shelton Mark Workman, Physical Education K-12, Safety 7-12, Jane Lew Jr. High, Peterson Elem.; Jacquelin Lee Ball, Elementary 1-6, Language Arts 4-8; Patricia Ann Chapman, Elementary 1-6, Language Arts 4-8, Emerson Elem., Blennerhassett Jr. High; Judy Rae Cole, Elementary 1-6, Emerson Elementary; Mary Ann Colvin, M.R. K-12, Learning Disabilities

K-12, Elementary 1-6, St. Mary's Elem.; Steven Eric Cunningham, Elementary 1-6, Jefferson Elem.; Rosalie Ann Giles, ECE-NK, Elementary 1-6, Craigsville Elem.; Michael Allen Goldsberry, Elementary 1-6, Learning Disabilities K-12, Jefferson Elem., Roosevelt Elem.; Patricia K. Gibson, Elementary 1-6, Nettie Elementary; Linda C. Hinkle, Elementary 1-6, Greenmont Elem.; Judith Lynn Kibble Elementary 1-6, Emerson Elem.; Hilda L. Long, Elementary 1-6, M.R. K-12, McKinley Elem.; Pamela J. (Hacker), Minigh, Elementary 1-6, Normantown Elem.; Mary Gladys Morris, Elementary 1-6, Emerson Elem.; Goldie Jean Mullens, Elementary 1-6, Craigsville Elem.; Karen Lee Parr, Elementary 1-6, Blennerhassett Elem.; Cathy Lynn Posey, ECE-NK, Elementary 1-6, Camden ECE Center, Weston Central; Kenneth Wayne Kuhl, Physical Education K-12, Spencer Elem. and Jr. High; Grady Lee Lamb, Math 7-12, General Science 7-12, Lewis Co. High Sch.; Timmie Ann Lilly, Business Educ. Prin. 7-12, Nicholas Co. High; Gary Lee Looney, Art Education K-12, Spencer Elem. and Jr. High; Kevin McCartney, Business Educ. Prin. 7-12, Calhoun Co. High; David Alan Meadows, Physical Education K-12, Social Studies Comp. 7-12, Mineral Wells Elem., Parkersburg South High; Gerry Clayton Myers, Physical Education K-12, Safety 7-12, Jane Lew Jr. High, Peterson Elem.; Vincent David Notice, Social Studies 7-12, Braxton Co. High; William Lamont Ratkovich, General Science 7-12, Math 7-9, Blennerhassett Jr. High; Lisa Rexann Smith, Business Educ. Comp. 7-12, Parkersburg High; Rebecca Jane Wagner, Physical Education 7-12, Art 7-12, Lewis Co. High Sch.; Paul W. Wills, Physical Education K-12, Safety 7-12, Burnsville Elem. and Middle; Shelton Mark Workman, Physical Education K-12, Safety 7-12, Jane Lew Jr. High, Peterson Elem.; Jacquelin Lee Ball, Elementary 1-6, Language Arts 4-8; Patricia Ann Chapman, Elementary 1-6, Language Arts 4-8, Emerson Elem., Blennerhassett Jr. High; Judy Rae Cole, Elementary 1-6, Emerson Elementary; Mary Ann Colvin, M.R. K-12, Learning Disabilities

(cont. on p. 7)



Sandi Gainer

## Gainer Selected As Freshman President

Sandi Leigh Gainer was voted president of the 1981-82 freshman class of GSC last Tuesday, August 25, at the freshman class meeting in the GSC Auditorium.

The daughter of Mr. and Mrs. Robert Gainer, both employed by GSC, Sandi is majoring in chemistry and plans to become an optometrist.

Sandi is a 1981 graduate of Gilmer County High School, and while in high school, she held many offices and served on the Student Council.

Her duties as freshman president will entail representation of the freshman class in the GSC Student Congress for the 1981-82 school year.

Nominations for Homecoming queen and court must be submitted to the Student Affairs office no later than noon on Sept. 9. A member of each class will be chosen for the court. Only seniors may run for queen.

Student Congress has scheduled elections for September 14-15. All GSC students may cast their vote during the day at the Pioneer Center and in the dorm lobbies at night.

This year's theme for the GSC Homecoming is "Send in the Clowns." All organizations are asked to begin thinking of float ideas and banners for the parade. Watch the *Mercury* for more information.



# Freshman, Get Orientated!

Has everyone survived the first week of school? Those who have are fortunate.

Consider finances. On registration day the unlucky students are subject to writing the largest checks since their bank accounts were opened, while the luckier students receive the biggest cash prize from financial aid that they've ever seen. Whatever happened to "and justice for all?"

More money is spent buying books the first week than most students would prefer to spend their whole lifetime. One good point is the books may be resold the next semester. Beware of con artists who try to sell you out-dated texts, however.

What about classes? No arguments as of now, probably. Why argue about classes when the first week is spent being dismissed shortly after the explanation of the syllabus and the description of texts to be used? Students will soon be faced with reality, though, when 20-page term papers and lengthy stories are assigned.

For the upperclassmen, the first week back at GSC is a matter of re-adjusting once again from summer activities to a schedule of academics. The freshmen have spent the past week becoming accustomed to roommates and the overall college life.

Two words of advice to the freshmen class...get involved. Since Glenville is not a thriving metropolis, GSC students have to find their own fun. Plan parties, picnics, and other activities with new-found friends and have the initiative to carry them out. There are also many campus organizations to join that offer a variety of entertainment.

So now after a week of adjustments, it is time to sharpen those pencils and fall into a schedule of studying. That is why we are here, so I'm told.

With your cooperation, The Mercury staff hopes to provide GSC with an informative and entertaining school newspaper. In order to do so, campus organizations are encouraged to meet the new Monday deadlines. My colleagues and I wish everyone a successful school year.

Michele Bruce,  
Editor in Chief

## Letter To Editor

I would like to take this opportunity to express my sincere thanks to the 1980-81 yearbook staff. While the staff was very small and problems were bountiful, the book was received very early at the campus and seems to have been received well by the students.

I would like to say a special "thank you" to Betty Wells (sports editor), Liz (Carpenter) Efav (layout editor), Mark Linville and Debbie Moore (photographers). These people, under the guidance of Mrs. Yvonne King (advisor) produced an outstanding yearbook.

Betty Wells and I would like to apologize for the lack of some sports pictures, but accidents are bound to happen.

We hope that everyone will enjoy their "GSC Country Store" and come back next year.

Thank you  
Carron Smith

## From The Wesley Foundation

What kind of a year is it going to be for you?

The Wesley Foundation is offering some opportunities to widen and expand your religious experience and life journey this year in Glenville. We'd like you to know about them and invite you to participate in them.

Some of the opportunities are:

--A weekly interdenominational prayer/Communion service on Monday evenings at 7:30 P.M. in the chapel.

--Five discussion groups meeting once a week for six weeks. The one-hour discussion will be informal with participants assuming responsibility for the agenda. The discussion groups will begin the week of Sept. 20th. For a listing of the topic areas and discussion leaders, just drop by the Wesley Foundation office.

--A weekly Coffee House at the Wesley Foundation, beginning the first of Oct. The listing of times and entertainment groups will come later. The Coffee

House will be held on Thursday evenings.

Although the Wesley Foundation receives the bulk of its financial support through the West Virginia Conference of the United Methodist Church, it is intended to serve all students and personnel of Glenville State College. We sincerely intend for our efforts to reflect a commitment to campus ministry.

The Wesley Foundation office will be open Monday thru Friday, from 9 A.M. till 5 P.M. The building will be open at other times as it is being used.

PLEASE NOTE several ways to contact us: Box 37, Admin. Bldg. or under the door at the Wesley Foundation.

\*By phone - 462-5574 or at home - 462-5156.

We look forward to meeting and getting to know you.

Julian Sulgit Patricia Jarvis

Members are still being accepted in the Pioneer Marching Band. If you play an instrument or have high school experience, apply in the Band Room. Drummers are especially needed.

## Dinner To Be Held

The First Baptist Church of Glenville would like to see students in church on Sundays.

A spaghetti dinner, in honor of GSC students, is planned for September 13. The dinner, free of charge, will be served following the morning worship service.

September 13 is also Campus Ministries Day for the American Baptist Churches in the United States and part of the morning worship will be devoted to those attending college.

The First Baptist Church welcomes everyone to their services and church events.

Those who would like to attend the spaghetti dinner are asked to stop by the Computer Center and leave their name with Earl or can just come to the September 13 service beginning at 11 a.m.

## Averages Released

Diane L. Bach, Associate Dean of Student Affairs, has released the sorority grade point averages for the Spring 1981 semester. The Delta Zeta's and Tri Sigma's had 2.8757 and 2.6180

Those Delta Zeta's with a 3.0 average or better were: Rhonda L. Anderson, Nancy L. Bernola, Michele D. Bruce, Jane A. Bumgarner, Traci L. Carter, Dena J. Dunlap, Margaret E. Groves, Tammy L. Gum, Beverly Wilson Isner, Andrea L. Lipscomb, Sheila A. Martin, Lora S. Park, Carol Nelson Spangler, Estella Tyler Whitt, Deena C. Warner, Diane E. Winslow, and Joyce Jarrell Wright.

Tri Sigma's obtaining a 3.0 average or better were: Pamela J. Bickel, Elizabeth R. Carpenter, Cheryl A. Cline, Linda D. Collins, Vicki L. Collins, Kelly A. Ford, Mary V. Hughes, Jennifer E. Morton, Patricia S. Robinson, Della Seaman Voris, Mary Ann Triplett, Peggy J. Walton, and Betty J. Wells.

## Staff Named

The staff of the 1982 Kanawhachen will again be under the leadership of Carron Smith as Editor. Carron is a Junior at GSC majoring in English with a minor in Journalism. Other staff positions that have been filled are: Advertising Manager- Betty Wells; Photographer- Debbie Moore; and Copy Writer- Becky Triplett.

The staff is hoping that more people will become interested in working on the Yearbook and that the next Kanawhachen will be even better than ever.

Anyone interested in joining the Yearbook staff should contact a staff member or advisor, Mrs. Yvonne King, in the Mercury office.

## GREEK NEWS

ΦΒΑ

The Lambda Chi Alpha Fraternity held its annual first meeting last Monday. We would like to welcome the new freshmen and all returning students back, with hopes that this will be the best year ever for the Greek organizations on campus.

A new meeting date was set for Mondays at 5:00 in Clark Hall. All brothers are heavily urged to attend.

New officers were elected to fill vacant slots. Congratulations and good luck to Delton Sigley - High Gamma, Gary Siers - High Delta, Will Wright - High Rho, Mike Cliver - High Tau, Larry Siers - High Kappa and Lee Loy - High Sigma and John Vizvary - High Phi. Marvin Taylor is our new Athletic Director.

TKE

The fraters of Tau Kappa Epsilon would like to welcome back everyone, especially the new freshmen to the campus of GSC. TKE will be sponsoring a softball tournament the week-end of Sept. 12 and 13. The entry fee is \$50 and 2 softballs. (The softballs you bring are the ones you play with.) There is also an 11 man limit to your roster. TKE is also proud to announce that John Huxely is the new Vice-President.

ΑΧΑ

Welcome to all members and interested persons. The first meeting of Phi Beta Lambda will be held September 2, 1981 at 3:00 in room 101 AB. Phi Beta Lambda is a business organization open to all business majors and minors. We are the collegiate level Future Business Leaders of America and all interested students are welcome to attend. Seniors, this is your last chance to join due to a change in our by-laws so please make an effort to attend.

ΚΔΠ

Kappa Delta Pi will have their first meeting on Sept. 10, 1981 in Scott Wing lounge at Pickens Hall. All members are urged to attend so that we can plan events for the coming year.

ΔΖ

The Sisters of Delta Zeta would like to take this opportunity to again welcome everyone back to GSC campus. Feel free to come visit us anytime at 305 East Main Street.

A formal meeting was held Monday, September 31 at the sorority house.

The actives would like to congratulate and welcome our first pledge, Ann Woody. Welcome to our bonds of sisterhood, Ann. We would also like to congratulate Sheila Martin who is our new scholarship chairman. Thank you to Jamie Copenhaver, past scholarship chairman, for helping us obtain our grade point average of 2.8757. Congratulations to Lora Park for obtaining the highest grade point average of her pledge class, Spring 81.

The Clean Room Award was presented to Rhonda Anderson. The Prestigious Pig Pen was awarded to Tina Helmick.

An organizational meeting is being held Sept. 2 at 4:00 in the Little Theatre for Alpha Psi. Election of officers is the main topic of business.

Ohnimgohow players shall meet Sept. 3 in the Little Theatre at 4:30 for an organizational meeting.

On Tuesday and Thursday nights, the Percussion Ensemble and Stage Band will rehearse. Those interested in either should come to the Band Room at 6:30 on those nights.

Any individual or group interested in participating in the 1981 Glenville State College Homecoming parade should contact Annetta Had-dox in room 615, Williams Wing of Pickens Hall or Dr. A.T. Billips in the student affairs office.

## THE GLENVILLE MERCURY

(USPS 220040)

The Student Newspaper

Phone 462-7361, Ext. 290

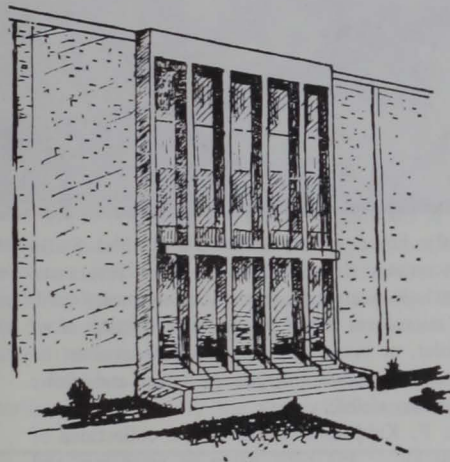
Published weekly and entered as second class mail at the Post Office at Glenville, West Virginia 26351. Subscriptions \$5.00 a year.

Editor . . . . . Michele Bruce  
Editor Emeritus . . . . . Becky Triplett  
Sports Editor . . . . . Steve Keenan  
Photographers . . . . . Debbie Moore and Rick Haveron  
Copy Editor . . . . . J.D. Brooks  
Advertising Manager . . . . . Betty Wells  
IBM Operators and Typists . . . . . Lou Fryman, Marilyn King, and Rhonda Anderson  
Circulation Managers . . . . . Carron Smith and Terry Mullooly  
Reporters . . . . . Cheryl Keenan, Janice Boggs, Steve Keenan, Jeannetta Mick, Terry Mullooly, and James Quinn



# Welcome To Robert F. Kidd Library

## Robert F. Kidd Library



Have you ever wondered how the college library got its name?

Robert Franklin Kidd was born the son of Thomas and Margaret (Johnson) Kidd on February 11, 1853 in Upshur County. He was educated in the common, private, and normal schools at Buckhannon and in Virginia. Kidd served as Editor of the Buckhannon *Banner* until 1882. He began the study of law in 1880 with C. C. Higgenbottom and later with John Bassell of Clarksburg. In 1882, Kidd was admitted to the bar.

From 1882-1884, Robert F. Kidd served as Principal of Glenville State Normal School. In 1884 he resigned the principalship to devote his time to practicing law in Glenville. Kidd had a long legislative career including representation of Gilmer County in the W.Va. House of Delegates in 1887 and service as a member of the W.Va. Senate (Ninth District) from 1899 to 1915. He was re-elected to the Senate in 1922 and 1924 (Tenth District) and attended the legislative sessions of 1923-25-27. In 1928, after an absence of 41 years, Kidd was again elected to the W.Va. House of Representatives where he served until his death. Kidd was a Democrat and a Methodist who served on numerous legislative committees. Other affiliations included membership in the Masons, Knights of Pythias, and the Woodmen of the World.

In the 1920's the Glenville Normal School sorely needed new library facilities. President E. G. Rohrbough (in 1927) recommended to the Legislature that a new library building be constructed. Largely due to a long-standing benevolent relationship with the college, Mr. Kidd used his legislative influence for an appropriation of \$50,000 from the Legislature in March of 1929 for the construction of a new library building on the Glenville campus. As a token of the College's appreciation, the new library building was named after Robert Franklin Kidd. He never lived to see the completion of the new library (now Clark Hall on the Glenville campus), for R. F. Kidd died on June 8, 1930 and the library doors were not opened to the public until April 2, 1931.

Mr. Kidd and his wife are buried in a cemetery adjacent to Louis Bennett Hall. Thus, the grave is not far from "his" library. On December 9, 1966 a new library building was dedicated -- once again to the memory of Robert F. Kidd.

Among the words and phrases most often heard during the opening days of school, those greetings best expressed are — **WELCOME TO GLENVILLE STATE COLLEGE!** It's a real pleasure for me to extend these greetings to new and returning students especially when I have the opportunity to meet you in the library.

Please take a few minutes and read through this publication for highlights about YOUR library. Sometime during your first days on campus visit YOUR library and stop by to say hello.

Again, **WELCOME!** I wish you much success at GLENVILLE STATE.

Dr. David M. Gillespie  
Library Director



*How big is Robert F. Kidd Library? To many students who are accustomed to small high school libraries, the GSC Library appears to be enormous. In terms of other academic libraries throughout the country, the Library is considered to be small to medium-sized. The approximate collection size is as follows:*

BOOKS .....	95,000 volumes
PERIODICALS .....	12,000 volumes
	650 titles
GOVERNMENT DOCUMENTS .....	50,000 volumes
MEDIA MATERIALS .....	16,000 volumes
MICROFORMS .....	227,000 volumes

*Seating capacity in the Library ranges from 350 – 400 students including lounge, classroom, carrel, and audio-visual areas.*

## LIBRARY HOURS

(DURING FALL AND SPRING SEMESTERS)

Monday - Thursday	8:00 AM - 10:00 PM
Friday	8:00 AM - 4:00 PM
Saturday	9:00 AM - 5:00 PM
Sunday	2:30 PM - 10:00 PM



Frustrated about using the library? Not really sure about what you're doing? Take heart for all that is now confusing and muddled shall soon become clear! If you are enrolled in a beginning English class chances are that soon you will experience a session on library orientation.

Library orientation involves an introduction to the basics needed to find materials in the Robert F. Kidd Library. You will be given a tour of the building and shown how to find books and magazine articles. Use of microforms and other special collections will also be explained in accordance with your instructor's request.

Anytime you may be stumped about finding library materials . . . **ASK.** A librarian or other employee will be available to help you.

## LIBRARY STAFF

**DR. DAVID M. GILLESPIE**  
Library Director

**WILDA M. KUHL**  
Secretary & Assistant to the Director

**CHUCK JULIAN**  
Reference Librarian

**GARNETT TAYLOR**  
Circulation Clerk

**BETTY HARDMAN**  
Circulation Clerk

**PREM VERMA**  
Cataloger

**BERNICE MICK**  
Technical Services Assistant

**DON PHILLIPS**  
Director - Media Center

**TOM HAMILTON**  
Technician - Media Center

**BETH KROI L**  
Secretary/Clerk - Media Center



## HOW THE LIBRARY IS ARRANGED

The books in the library's collection are arranged numerically according to the Dewey Decimal Classification System. A brief outline of this classification follows:

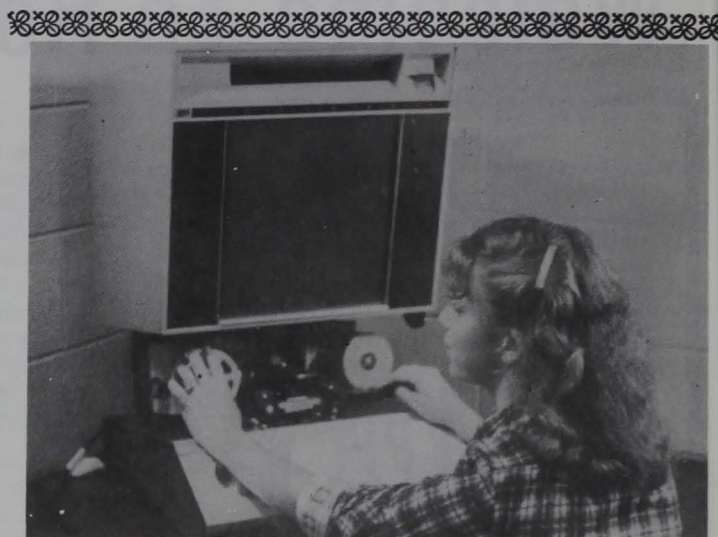
<b>000 Generalities</b>	<b>500 Pure Sciences</b>
010 Bibliography	510 Mathematics
020 Library & information sciences	520 Astronomy & allied sciences
030 General encyclopedic works	530 Physics
040	540 Chemistry & allied sciences
050 General serial publications	550 Sciences of earth & other worlds
060 General organizations & museology	560 Paleontology
070 Journalism, publishing, newspapers	570 Life sciences
080 General collections	580 Botanical sciences
090 Manuscripts & book rarities	590 Zoological sciences
<b>100 Philosophy &amp; Related Disciplines</b>	<b>600 Technology (Applied Sciences)</b>
110 Metaphysics	610 Medical sciences
120 Epistemology, causation, humankind	620 Engineering & allied operations
130 Paranormal phenomena & arts	630 Agriculture & related technologies
140 Specific philosophical viewpoints	640 Home economics & family living
150 Psychology	650 Management & auxiliary services
160 Logic	660 Chemical & related technologies
170 Ethics (Moral philosophy)	670 Manufactures
180 Ancient, medieval, Oriental	680 Manufacture for specific uses
190 Modern Western philosophy	690 Buildings
<b>200 Religion</b>	<b>700 The Arts</b>
210 Natural religion	710 Civic & landscape art
220 Bible	720 Architecture
230 Christian theology	730 Plastic arts Sculpture
240 Christian moral & devotional	740 Drawing, decorative & minor arts
250 Local church & religious orders	750 Painting & paintings
260 Social & ecclesiastical theology	760 Graphic arts Prints
270 History & geography of church	770 Photography & photographs
280 Christian denominations & sects	780 Music
290 Other & comparative religions	790 Recreational & performing arts
<b>300 Social Sciences</b>	<b>800 Literature (Belles-lettres)</b>
310 Statistics	810 American literature in English
320 Political science	820 English & Anglo-Saxon literatures
330 Economics	830 Literatures of Germanic languages
340 Law	840 Literatures of Romance languages
350 Public administration	850 Italian, Romanian, Rhaeto-Romanic
360 Social problems & services	860 Spanish & Portuguese literatures
370 Education	870 Italic literatures Latin
380 Commerce (Trade)	880 Hellenic literatures Greek
390 Customs, etiquette, folklore	890 Literatures of other languages
<b>400 Language</b>	<b>900 General Geography &amp; History</b>
410 Linguistics	910 General geography Travel
420 English & Anglo-Saxon languages	920 General biography & genealogy
430 Germanic languages German	930 General history of ancient world
440 Romance languages French	940 General history of Europe
450 Italian, Romanian, Rhaeto-Romanic	950 General history of Asia
460 Spanish & Portuguese languages	960 General history of Africa
470 Italic languages Latin	970 General history of North America
480 Hellenic Classical Greek	980 General history of South America
490 Other languages	990 General history of other areas

### Book Security System

As a service to readers, all library books are protected against unauthorized removal by an electronic detection system. Books taken through the exit that have not been properly checked out will activate an alarm and gate lock mechanism. Readers activating the alarm system will be asked to check their materials again and pass through the check-out gate a second time.

### Photocopy Services

A coin operated photocopy machine is located at the front of the book stack area on the main floor. Photocopies of microform material can be provided through inquiry at the Reference Desk.



Recently libraries throughout the United States have been increasing their collections of microformats. Microforms include microfilm, microfiche, and microcard. Essentially, a microform is a photographic reduction of an article, pamphlet, or book. Usually a microform must be placed in a machine which enlarges the image and allows the library user easy visibility.

Robert F. Kidd Library has several collections of microforms. Many of the back issues of magazines and journals are held in the library on microfilm due to space limitations and ease of storage afforded by microformats. Periodicals on microfilm are located on the third floor of the library next to the microfilm readers. Prints may be made from microfilm from a special reader-printer located on the main floor. If you require a print from microfilm check with the staff at the Circulation Desk.

ERIC is a major microfiche collection in the field of education. ERIC is an acronym for Educational Resources Information Center and is a governmentally-supported system of information clearinghouses. Current research findings, project and technical reports, speeches and unpublished manuscripts, books, and professional journal articles are types of materials which may be found in the ERIC collection. Subject areas within the collection include adult, career and vocational education; counseling and personnel services; educational management; elementary and early childhood education; handicapped and gifted children; higher education; information resources; junior colleges; languages and linguistics; reading and communication skills; rural education and small schools; science, mathematics, and environmental education; social studies/social science education; teacher education; tests, measurement, and evaluation; and urban education. For more information on ERIC see the Reference Librarian.

Newsbank is a microfiche current awareness service consisting of excerpts from major newspapers throughout the country. At least one newspaper from every state is indexed. Articles are clipped then photographed onto the microfiche. Topics indexed in the collection include business and economic development; consumer affairs; education; employment; environment; government structure; health; housing and urban renewal; law and order; political development; social relations; transportation; and welfare and poverty. Rooms-ful of newspapers are reduced to a few inches of microfiche easily accessible to all students. It's a quick and simple method for finding information on current topics.

Another special collection of microforms is the Health, Physical Education, Recreation, and Allied Areas microfiche/microcard publications. Produced by the University of Oregon, the emphasis of these materials is placed upon unpublished research materials which have national significance, particularly doctoral dissertations and master's theses, as well as scholarly books and journals now out of print.



## LIBRARY POLICY

1. Books, government documents, pamphlets, and some media circulate for a two-week period.
2. Periodicals (magazines and newspapers) do not circulate.
3. Reserve materials do not circulate.
4. Reference materials do not circulate.
5. Microforms do not circulate.

6. Overdue books and materials:  
Books, government documents, pamphlets, and some media have a two-week loan period with no overdue fines unless recalled. Films are checked out for three days.

When outstanding materials are needed at the Library, a recall notice will be sent. This notice affords the library user a time period during which he may return the requested material without penalty. Once this "grace period" has passed, fines are levied for materials which remain overdue.

Students having special circumstances or complications should notify the library circulation staff.

## DIRECTORY OF FLOORS

### GROUND FLOOR

Media Center Office  
Media Center Production Room  
Media Center Classroom  
Lounge/TV Area  
Restrooms  
Listening Rooms

### FIRST FLOOR

Circulation Desk  
Reference Collection  
Reference Librarian  
Xerox Machine  
Card Catalog & Indexes  
Bound Periodical Collection  
ERIC/Newsbank/P.E. Dissertations Collection  
Best Sellers  
Current Periodicals  
Reserve Materials  
Vertical File  
Technical Processing Department

### SECOND FLOOR

Library Director's Office  
000 — 813.52/C619Y  
Oversize Collection  
Conference Rooms  
Bound Periodicals (Time, Life, Newsweek, World Report, Etc.)  
Biography Section

### THIRD FLOOR

813.52/D — 999  
Fiction Section  
U.S. Government Documents Depository  
West Virginia Collection  
Locked Case  
Library Classroom  
Juvenile Collection  
Microfilm Collection  
Restrooms

### MAPS

*If you plan to visit a major city within the state or Continental U.S., check at the Circulation Desk. A comprehensive collection of city and county maps is on file there for your examination. The maps do not circulate but are available for consultation and photocopying. For more details ask the circulation attendants.*



Many books in the Library are not located in the regular stack area. Instead they are housed in special collections throughout the stack areas. A brief synopsis of these collections includes:

### BEST SELLERS

Located on the First Floor within the Current Periodicals Section. Under a standing order plan the Library regularly receives books which appear on the Best Sellers list. Best sellers circulate for a two-week period.

### GOVERNMENT DOCUMENTS

Located on the Third Floor behind the caged area. The U.S. Government issues many reports, studies, hearings, pamphlets, and other documents dealing with a wide range of topics. The Library selectively procurs and organizes these materials so that faculty and students may use them for research. Most government documents circulate for a two-week period.

### BIOGRAPHY/FICTION

Fiction is located on the Third Floor — Biography is located on the Second Floor. Although two sections of the collection are devoted to biography and fiction books, all new materials in each of these areas are placed within an assigned Dewey Decimal classification number. Thus, contemporary American fiction should be shelved in 813.54 with contemporary British fiction in 823.54. Biographies are shelved in the subject area to which they pertain.

### JUVENILE COLLECTION

Located in the middle of the Third Floor. Books for elementary and secondary school students as well as storybooks and noted children's literary works comprise a large part of the Alma J. Arbuckle Children's Collection. Materials have been selected for use by students and young members of the community. The physical setting provides a comfortable area within the library for the younger patron.

### OVERSIZE COLLECTION

Located on the Second Floor. Some books are too large to fit in their regular location in the stack area. All of these materials have been placed in a separate oversize section where there is more room to house them. In the card catalog an oversize book has a "q" or "f" before the number.

### RAND COLLECTION

Located on the Third Floor outside of Government Documents. This collection of documents deals with various topics of economic, political, and social significance. Rand is an investigative "think tank" which produces the studies, usually commissioned by a governmental or large national agency. They circulate for a two-week loan period.

### REFERENCE COLLECTION

Located on the First Floor across from the Circulation Desk. Encyclopedias, dictionaries, handbooks, indexes, and other technically-oriented materials are shelved in this area. In the card catalog reference books have an "R" above the number. Reference books may not be checked out of the Library.

### WEST VIRGINIA COLLECTION

Located on the Third Floor. Books by and about West Virginians are kept in this section including official documents and reports from state agencies. West Virginia books have a "W" above the number on the card in the catalog. The Locked Case is a component of the West Virginia Collection which houses rare and archival materials. "Locked Case" will appear above the number on the card when materials are shelved in this area.

The Library has several classrooms within the building. They are:

- LY 302 — Third Floor across from Juvenile Collection
- LY 208 — Second Floor - East end of Building (Conference Rooms)
- LY 16 — Ground Floor - Media Classroom



The Vertical File houses pamphlets, clippings, and other materials not placed in the regular collection. All items are arranged by subject. Students have open access to the Vertical File and may wish to consult the subject heading drawers next to it. A quick, easy way to find valuable information!



Real things happen at the Media Center! One of the library's fascinating components, the Media Center and its materials can enlighten or entertain. Its materials consist predominately of non-book items such as filmstrips, records, tapes, videotapes, study prints, 16mm films, transparencies, and kits.

Activities in which you might participate in the Media Center could include:

- Viewing a film in the Media Classroom
- Individualized study at one of the private carrels
- Watching the TV and relaxing in the Lounge area
- Listening to either classical or popular records in one of the listening rooms
- Compiling materials available from the Center's collection for use in a classroom presentation
- Production of media which you have designed
- Determining what audiovisual materials might be available from other sources such as rental agencies or other libraries
- Requesting assistance from the Center's staff regarding production and usage of audiovisual materials
- Borrowing equipment (record players, cassette recorders, projectors, etc.) for your classroom use.

Located on the Ground Floor of the Library, the Media Center is staffed by several professionals and a number of student assistants. Don Phillips, Director, is a qualified educational technologist who can offer advice in the production of media and any problems which you might have in the presentation or usage of audiovisual materials. He is assisted by Beth Kroll, secretary, and Tom Hamilton, technician. Each of these individuals is willing to offer friendly advice in using the Center.



The Shakespeare Plays is a continuing project of Time-Life and the BBC. At the Media Center students may view past season performances as well as those from the current season.

Art abounds in the Library! As you stroll through the building it becomes obvious that various paintings and sketches are featured as part of the furnishings. Wall paintings on the second, third, and ground floors were executed by students of the college.

At the west end of the second floor one may discover the portrait gallery of Glenville State College presidents. Virtually all of the men and women who served at the helm of leadership are featured in this gallery.

Several print collections are located on the second floor including an interesting set of lithographs near the Library Director's Office and the main staircase and an Ornithology Series from

Cornell University near the Oversize Collection.

Many other canvases within the Library were originally part of student art shows. Some pieces were purchased from GSC art majors while others were donated by the artists.

Two wood sculptures depicting age and youth, maturity and naivete, were commissioned from Wolfgang Flor as a gift from the faculty and staff of the college. Mr. Flor, a noted West Virginia sculptor, has exhibited widely and once resided in Upshur County. One piece is located near the gold-carpeted stairway on the first floor while the other is placed in the juvenile collection on the third floor.



Need a book that we don't have? Often students find that a particular book for which they are looking is not in the library's collection. Don't despair, for the Robert F. Kidd Library belongs to an inter-library loan network consisting of libraries throughout the state of West Virginia.

Libraries which belong to the system include public, academic, and special facilities. A union list of all materials containing entries for over 3½ million materials may be consulted by the library staff in an attempt to locate your title. Students are asked to fill out a form detailing the basic bibliographic information. Especially important is the source for verification, i.e., how do you know about this book. Librarians can help you with this aspect.

If the book is in the state we will request that it be sent here for your use. Photocopies of magazine and journal articles may also be obtained in this matter. A charge for photocopying must be assumed by the borrower; otherwise, the whole thing is free.

For more information about borrowing on inter-library loan . . . see a librarian!

The Library has the news! A major part of the periodicals collection is the ever-expanding collection of newspapers to which the Library subscribes. NATIONAL titles include:

Christian Science Monitor  
New York Times  
Wall Street Journal  
Washington Post

STATE newspapers which the Library receives are:

Charleston Gazette  
Clarksburg Exponent  
Morgantown Dominion Post  
Parkersburg News  
Wheeling Intelligencer

Various COUNTY newspapers arrive regularly at the Library including:

The Braxton Democrat  
The Calhoun Chronicle  
The Glenville Democrat  
The Grantsville News  
Nicholas County News-Leader  
The Parsons Advocate  
The Ritchie Gazette  
Wirt County Journal

SPECIAL-INTEREST newspapers which the Library subscribes to include:

Barron's  
Basketball Weekly  
Chronicle of Higher Education  
Computerworld  
Mountain Eagle  
Rolling Stone  
Variety  
Village Voice  
The West Virginia Hillbilly

FOREIGN titles include:

France - Amerique  
German Tribune  
Iran Times  
Manchester Guardian Weekly  
Yugoslav Life

All newspapers are displayed in the Current Periodicals Section of the Library located on the First Floor.

#### DIRECTORS - ROBERT F. KIDD LIBRARY

1913 - 1916	Lucille Virginia Hays
1921 - 1922	Irma Langley West
1923 - 1955	Alma Janet Arbuckle
1955 - 1958	Floyd Waldo Miller
1958 - 1962	Charles Darold Patterson
1962 - 1963	Dorothy Peterson
1963 - 1965	Dale Eugene Shaffer
1965 - 1968	Albert Paul Carlson
1968 -	David Marston Gillespie
July 1975 - June 1976	Clarence Lee Coffindaffer (While David Gillespie was on leave)

EMMA SNIDER, ARMOLD MOSS, TRUDY HARDMAN  
Custodians





GSC Cheerleaders attending the Universal Cheerleading Association camp were Mary Grose, Beth Carpenter, Angel Goddard, Melissa Simpson, and Donna Bumgardner.

## Cheerleaders Receive Top Honors

During the week of August 17-22, the Glenville State College cheerleading squad travelled to Virginia Polytechnic State University for a camp sponsored by the Universal Cheerleading Association and came away with top honors in the girls' squad competition. The squad left Virginia Tech, whose camp was attended by squads from such large schools as the University of Kentucky, Ohio State, Michigan, Hawaii, and the University of Florida, with highest honors in the

all-girl squad competition of 28 schools. For the excellence the squad portrayed at the camp, they received five superior ribbons, a spirit stick, a trophy for best all-girl squad, and a special prize for double-stunt competition.

GSC's cheerleaders for the 1981-82 school year are: Donna Bumgardner, a Glenville sophomore majoring in art; Melissa Simpson, a junior from Weston pursuing a degree in Business; Beth Carpenter, a Rich-

wood sophomore majoring in Pre-Med; Mary Grose, a Clay junior pursuing a degree in Social Work; and Angel Goddard, Head Cheerleader, a senior from Elkview majoring in Business.

## Can You Spell C-A-T?

Have you ever stopped to ponder how funny some of our words are spelled? Now I know in these trying times most of us are worried about how to survive, not how words are spelled. But take for instance, the word things, if you study it, it becomes thin gs or the word assistants, it becomes --- i ants. The word portraits becomes por traits (my how our mothers have said this one over and over again). California becomes Calif ornia and most of us know that calif's can be ornery, draft becomes d raft and how many of you fisherman has called a raft a d--- one.

President becomes pres ident (it sounds like something we would call the parking situation at GSC) and the word minister becomes mini ster, which would be a small stirrer. Unfortunately there are many words that could be broken up like this and naturally this is just another bunch of trivia that was meant to be enjoyable, but will be put in file 13. Oh well, at least I tried!

Becky Triplett

## Student Teachers—

(cont. from p.1)

neth Glen Riggs, Jr., M.R. K-12, Elementary 1-6, Normantown Elem., Sand Fork Elem.; Vicki Diane Robertson, Elementary 1-6, St. Mary's Elem.; Tim T. Sayre, Elementary 1-6, Learning Disabilities K-12, Blennerhassett Elem., Vienna Elem.; Della Kay (Seaman) Voris, Elementary 1-6, To be placed and supervised by Marshall University; Janet Curry Singleton, Math 4-8, Elementary 1-6, Summersville Jr. High Sch., Beaver Elem.; Vera Colette Smith, Elementary 1-6, Learning Disabilities K-12, Mineral Wells Elem.; Colin Dale Sprouse, Elementary 1-6, Math

4-8, English 4-8, Davis Elementary, Gassaway Middle; Bculab, Norma Stover, Elementary 1-6, Social Studies 4-8, Roosevelt Elem., Franklin Jr. Hi.; Mary Ann Triplett, ECE-NK, Elementary 1-6, Normantown Elem.; Steve Vincent, M.R. K-12, Elementary 1-6, Gihon Elementary; Deena C. Warner, Elementary 1-6, ECE-NK, Gihon Elem. Virginia Lauren Welch-Wiblin, Elementary 1-6, Jefferson Elem.; Christina Lynn Whytsell, Elementary 1-6, M.R. K-12, Mineral Wells Elem., Jefferson Elementary.

Rosters for women's intramural softball must be turned into Annetta Haddox in room 615, Williams Wing of Pickens Hall or in Scott Wing office by Tuesday, September 8. Each roster must include at least eleven players. Notices of games will be posted. Please meet the deadline.

## TKE's Capture Highest Average

Tau Kappa Epsilon's grade point average led other fraternities on campus last semester. With an average of 2.6063, the TKE's were followed by Lambda Chi Alpha with 2.4660 and Theta Xi with 2.1525.

Those who amassed a 3.00 or better were: TKE - Tim L. Carter, Daniel Alan Dennis, Mickey D. Kinder, Rick Lee Kinder, Charles W. Ludewig, William B. Szabo. Lambda Chi's - William E. Dille, Dwayne W. Duffield, Alan D. Farnsworth, Timothy W. Loudin, Jeffrey C. McDowell, Richard L. Moreland, Gary W. Ross, John C. Vizvary. Theta Xi's - Billy J. Belcher, David J. Douglas, Steven E. Lockwood, and Ronald B. Wildman.

There will be a meeting of anyone interested in playing baseball at 1:00 Thursday, Sept. 3 in the Health and P.E. Building. If you are not able to attend, see Coach Pottmeyer before the meeting.

## Cross Country Team Prepares For Season

The Glenville State College cross country team will be attempting to break an old habit when it begins its season this year. The GSC harriers, coached by Dr. James Hilgenberg, Jr., have placed second in the West Virginia Conference cross country wars for the past three years. They, along with Hilgenberg, hope that this year is different.

Six experienced runners return for Hilgenberg in the team's quest for its first conference title. Added to those six are a junior runner and six incoming freshmen. Hilgenberg is in hopes that all of the runners can stay out for the whole season. That would erase the depth problem the Pioneers had last year.

Four-year captain P.K. Coon heads the list of returnees for GSC. Coon, from Sherman High School in Boone county, was a member of the only Pioneer cross country team to compete in the national meet. Coon placed 11th in last year's conference meet.

Last year's conference Runner of the Year, Larry Taylor, returns, also. Taylor, a sophomore from St. Mary's, won the conference meet as a freshman last season.

Other runners returning are Billy Belcher, junior captain from Herbert Hoover; Steve Roberts, sophomore

captain from Glenville; Craig Boch, the squads only other senior besides Coon; and Steve Keenan, a sophomore from Gauley Bridge.

Junior Randy Anderson, a GSC basketball standout, will help out for Hilgenberg this year. He will run at least in the home meet.

Six freshmen runners will contribute to the GSC program this season. They are: Lee Haddox, who was one of West Virginia's top high school runners in his junior and senior years at St. Mary's; Frank Lewis, a noted road racer in the state; Chuck McKnight, a sprinter while at St. Mary's; Steve Meckfessel, a George Washington high product who will try out for the Pioneer basketball and tennis teams as well; Dave Smith, also a sprinter from St. Mary's; and Biddle Williams, who ran cross country and track for Mount Hope High.

Last year, GSC went 20-1 in the conference and 38-35 overall, with most of those losses coming against NCAA Division I and II schools. This season, the Pioneer squad wants to improve on its record. Its first competition will be at the California State (Pa.) Invitational on Saturday Sept. 12. The season will hopefully climax at the NAIA National meet in Kenosha, Wisconsin on Nov. 21.



Editor Carron Smith and Yearbook Advisor Yvonne King display the 1980 edition of the Kanawhachen entitled the "Country Store."

## Yearbook Review Continued

(cont. from p. 1)

pages you may laugh, cry, complain or be totally reminiscent. There's a little bit for everyone and a whole lot for many.

The coverage on Miss Olsen is very appropriate, she is, was, and shall always be Miss GSC.

The color photos are pleasant and tend to offset the continuous pages of black and white. I hope there can be more next year that includes the Miss GSC contest and other highlights of the 81 school year.

By choice or chance, GSC graduates will meet and during their backslapping handshaking, "Oh, you haven't changed at all," routine, one or all will say "Remember when."

The 1980 yearbook is a ready reference to "remember when." There are 924 pictures that cover all the events that were events and

those students who participated and others who only look forward to remembering that full head of hair back in "80."

There isn't sufficient space to complete my impression of the 1980 yearbook. However, I cannot end without commenting on the dedication displayed by the editor, Carron Smith and the other members of the staff: Liz Carpenter, Debbie Moore, Mark Linville and their advisor Yvonne King.

The yearbook for 1980 was available to students two months earlier than last year. The staff and advisor had to rush many sections that would have received more attention in previous editions. With deadlines and the tremendous amount of work in mind...I can only say--well done!

J.D. Brooks



If you'll  
remember  
our name,  
we'll  
remember  
yours.

Member  
FDIC



**Kanawha Union Bank**

101 E. Main St.  
GLENVILLE, WEST VIRGINIA 26351

Food Stamps **IF IT'S GOOD FOOD** Monday - Saturday

Welcome

**YOU WANT--**

8 A.M. - 9 P.M.



*Visit*

PIONEER

OPEN SUN.

GROCERY

10:am-7:30 pm.

**Sears**

SEARS, ROEBUCK AND CO.

Authorized Catalog Merchant

405 N. Lewis Phone 462-7374

Catalogues Available

**SUMMER'S  
PHARMACY**  
PRESCRIPTION DRUGGIST  
--8-8 PM



*Better  
Values  
AT  
DALTON'S*

Headquarters for

Wrangler Wear

Glenville, Grantsville



Director: Richard Moore  
Cast: David Carradine, Jeff  
Cooper, Roddy McDowall, Eli  
Wallach, Erica Creer, Christopher  
Lee  
102 minutes  
1979 R  
(C) \$200

Kung fu and Zen mysticism  
blend together in this exciting  
adventure-fantasy originally  
conceived by the immortal Bruce  
Lee and James Coburn. An arena  
fighter (Jeff Cooper) seeks the  
Book of Enlightenment; martial  
arts master David Carradine  
(TV's Kung Fu) plays four differ-  
ent characters, each of whom  
helps or hinders Cooper in his  
search. With thrilling kung fu bat-  
tles, Zen philosophy, spirited  
performances and spectacular  
photography, *Circle of Iron* is a  
must for discerning action fans.

"Dedicated to the late Bruce Lee,  
*Circle of Iron* is the definitive mar-  
tial arts movie."

—Bruce Williamson  
Playboy

Circle of Iron

Tues. Sept. 8

7:00 & 9:00 p.m.

Ballroom

Wed. Sept. 9

7:00 & 9:00 p.m.

Auditorium

GILMER COUNTY MENTAL HEALTH CLINIC  
IN THE MEDICAL CENTER  
ON MINERAL ROAD

Individual, Marital and Family Counseling

Drug, Alcohol and Sex Information

Hours 8:30 - 4:30 Monday - Friday

Evenings by Appointment

Phone 462-5716

Emergency 462-8850

**Featuring:**

**MOHAWK**

**&**

**B.F. Goodrich**

**TIRES**

**New & Recap**

**Tires**



**CASH  
TIRES**

computer-balancing  
brakes  
shocks  
are offered!!

CASH TIRE SVC.  
13 S. LEWIS ST.  
GLENVILLE, WV 26351  
462-5606

**ROBERT'S  
BROTHER'S  
BAND**

every Wednesday  
night 9-12

LIVE ENTERTAINMENT EVERY WEEKEND!!!!

**THE  
FIREPLACE  
INN**

POOL TOURNAMENT—  
MONDAY NIGHTS FOR LADIES ONLY AT 7:30!!!  
WEDNESDAY NIGHTS FOR EVERYONE AT 7:30!!!



**FEATURING:  
PutmanCounty  
Picker's**

**Sept. 4**

FirePlace  
Route 71  
Box 2C  
Glenville  
462-3703