



The cast for the first play of the 1981-82 theatre season has been chosen. The play, to be presented October 1-3, is entitled "The Effect of Gamma Rays on Man-in-the-Moon Marigolds" and will include five women. Actresses are: (left to right) Debby Dean, Tammy Igo, Mrs. Barbara Nicholson, and Cara Keenan. Missing is Liz Sweeney.

Cast For 'Marigolds' Play Selected

Beatrice was a mother... and the embittered ringmaster of the circus Hunsdorfer featuring three generations of crazy ladies living under the sloppiest big top on earth. Nanny was no problem. She sat and stared and staved silent as a venerable vegetable should. Ruth was half-man and easily bought with an occasional cigarette. But how in the world could Beatrice control Tillie - keeper of rabbits, dreamer of atoms, true believer in life, hope, and THE EFFECT OF GAMMA RAYS ON MAN-IN-THE-MOON MARIGOLDS.

So Glenville State College will be introduced to the 1971 Pulitzer Prize-winning play written by Paul Zindel. Mrs. Linda McKown, Director of Theatre, has chosen MARIGOLDS as the first play of the 1981-82 Theatre season. Auditions were held

in the refrigerated auditorium August 31st, and Sept. 1st. The cast of five women includes Mrs. Barbara Nicholson, Instructor in Speech, as Beatrice, the mother; Cara Keenan, freshman from Gauley Bridge, as Ruth the older daughter; Tammy Igo, sophomore from Clay, as Matilda, the younger daughter; Liz Sweeney, senior from St. Marys, as Nanny, the ancient shut-in who provides the Hunsdorfer family income; and Debby Dean, senior from Jane Lew, as Janice Vickery, finalist in the high school science fair.

THE EFFECT OF GAMMA RAYS ON MAN-IN-THE-MOON MARIGOLDS has had an interesting production history. The play was an off-Broadway success of the 1970-71 New York season. Sada Thompson, star of the television hit "Family" won an Obie (off Broadway Academy

Award equivalent) for her performance as Beatrice. Joanne Woodward won an Academy Award nomination for her screen portrayal of Beatrice. MARIGOLDS is one of the most often produced plays on high school, college, university, community, and professional stages across the United States.

MARIGOLDS will be presented in the GSC Auditorium October 1, 2, and 3. That is Homecoming weekend. Five one-act plays will also be presented this semester. These one-acts will be directed by the students in Speech 311, Stage Directing. Anyone on campus is welcome in the theatre productions. More information will appear in later issues. THE MUSIC MAN will be the musical theatre feature March 5, 6, and 7. THE UNWICKED WITCH will cap the '81-82 GSC Theatre Season as the Children's Theatre selection to be presented April 26, 27, 28, and 29.

Crews are now organizing for the MARIGOLDS production. Everyone welcome. See Mrs. McKown in office 315 of the Language Division.

The Glenville Mercury

Number 3

Glenville State College, Glenville, West Virginia

Wednesday, September 9, 1981

Homecoming Week Events Outlined

The weekend of October 2-4 is rapidly approaching and that means Glenville State College Homecoming 1981 is almost upon us. There are many aspects to a GSC Homecoming, and everyone can find some way to become involved in the festivities, whether it be cheering at the Homecoming game, voting for the Homecoming Queen and her court, entering the Banner contest, working on the play scheduled for Homecoming weekend, building a float to enter in the float competition of the parade, or going to the Homecoming Dance.

The Student Congress will be sponsoring a banner contest the week before Homecoming. Any organization or floor in the residence halls may participate in this contest by making a banner to go along with the theme of Homecoming, Send in the Clowns, and displaying it from any building on campus. Jeff Davis, Student Congress senator-at-large, is in charge of the contest.

GSC Theatre will present the two-act drama, "The Effect of Gamma Rays on Man-in-the-Moon Marigolds," on October 1-3 at 8pm. in the Auditorium. Mrs. Linda McKown is the Director of the play.

Saturday, October 3 will be an action-packed day

with much to offer for GSC students, and faculty, alumni, and the residents of Glenville and surrounding communities.

The GSC Homecoming parade will begin the festivities on Saturday. Annetta Haddox, senator-at-large to the Student Congress, is in charge of the parade. The parade will be led by Grand

Activity Calendars Available To Students

Free Activity Calendars for the Academic Year 1981-82 are available in The Office of Student Affairs.

Some additions, deletions, and changes are necessary to correct the calendar:

- 1) Delete - Thursday, Friday, and Saturday, December 3, 4, and 5, 1981, "GSC Theatre: Inherit the Wind"
- 2) Add - Friday, March 12, 1982, "Classes for Spring Vacation end at 4:00 p.m."
- 3) Add - Monday, March 22, 1982, "Classes Begin 8:00 a.m. following Spring Vacation"
- 4) Delete - Friday, April 2, 1982, "Classes End for Spring Vacation"
- 5) Add - Thursday, April 8, 1982, "Classes End for Easter Recess 4:00 p.m."
- 6) Add - Tuesday, April 13, 1982, "Classes Begin 8:00

(cont. on p. 2)

Marshal Jesse Lilly and will include such highlights as Bob Delaney and his six Clydesdale horses, the 1981 Black Walnut Festival Queen, a clown unit, the Nemesis Shrine Temple Motor Corps, as well as GSC's Homecoming Queen and court, organizational floats, and many other entries.

Immediately following the parade, GSC President William Simmons will crown the 1981 Homecoming Queen and present her court in the amphitheater. Elections for the court will be held the week before Homecoming.

The GSC Pioneer Foot-

ball team will meet the West Liberty Hilltoppers in the Homecoming game at 1:30 pm. Saturday at Pioneer Stadium. The game will also be Parent's Day.

Saturday evening, GSC Theatre will present the last performance of the drama at 8:00 pm. and 9:00 pm. the Student Congress will sponsor the annual Homecoming Dance. Entertainment will be provided by the Midnight Dues Band.

If you are a freshman or upperclassman who is going to be on campus the weekend of October 2-4, there is no reason to complain about having nothing to do.

Kyle Clinic Opens For GSC Students

James Kyle, M.D. and Diane Kyle, R.N. opened the Kyle Clinic (formerly the Gilmer County Health Center) on Mineral Road to all college students. The clinic is replacing the infirmary that was located in the Physical Education Building. The husband-wife team are enthusiastic about the forthcoming year, and hope to have suggestions and opinions from the students on how to update and make their care more available to the students.

The clinic is open daily (Monday through Friday) 9am to 4:30pm. and on

Thursday 7:30am to 4:30 pm. It is very important for students to make an appointment before going to the Clinic, and special arrangements can be made for same-day appointments. There will be an extra charge for those who come to the clinic without an appointment. For an appointment call 462-5708.

Dr. and Mrs. Kyle are offering all kinds of health care, including regular health care and counseling. They would also like for the students to be more aware of good personal hygiene and become aware of good

medical practices. However, it should be stressed that an appointment at the clinic is not an excuse from class, and instructors will not accept it.

Mrs. Diane Kyle graduated from Parkersburg Community College and Miami, Ohio, and did her graduate work at WVU. Dr. Kyle did his undergraduate work at Concord and graduate work at WVU. The couple is looking forward to working with the students and ask for their input to make the clinic more efficient.

Are you interested in art? Can you draw? If you have always had a dream of having your drawings published, this is your chance.

The Mercury needs a cartoonist. Don't be concerned about your experience - we will give it to you. An editorial cartoon weekly and occasional sports cartoons are required of the person filling the position.

If you would like to be a cartoonist for The Mercury, please call 462-7361, ext. 290, or apply in person at The Mercury office, 4 Clark Hall.

Neither Rain, Nor Zip 4 Will Stop The US Mail

Residents in West Virginia and across the United States are now beginning to receive their official Zip Plus 4 code assigned to them by the U.S. Postal Service. Although the new program is voluntary, the mailing efficiency and rate reductions promised by the Post Offices will not be valid unless mailers cooperate.

Arguments have already been heard against the new system and the added numbers that one must memorize and are asked to use. People must deal with numbers everyday - a room number at the dorm, a ticket number to receive food ordered at a restaurant, a friend's telephone number, and many more. Is it too much to ask mailers to simply put an additional four numbers on their zip codes so a more beneficial system can be devised?

For those who don't know, the Zip Plus 4 program will work on the same basis as the bar codes put on food products. We've already seen the efficiency added to the check-out process in the modernized grocery stores. So now the postal service has adopted the program to bring greater accuracy in the handling and delivery of mail.

Everyone is encouraged to cooperate with the Zip Plus 4 program. All the postal service asks is that mailers begin including their assigned code on returned addresses.

So why not cooperate, unless we want to buy a postage stamp that could cost \$1 in years to come just because we didn't help out with a plan that is promising to keep the current rates stable.

The postal service has spent a lot of time preparing a system to benefit the American mailer, so let's help them by adding on those four extra numbers.

Michele Bruce,
Editor-in-Chief

From The Wesley Foundation

Who belongs at the Wesley Foundation?

Since the school year began, I've been asking students and faculty the question. Predictably, there have been many answers. What many of those answers indicate is how easily we go to or stay away from a place like the Wesley Foundation, based upon who is there or not there.

I would like to emphasize that the Wesley Foundation efforts are geared toward the whole campus community. It is not meant to establish a local church on campus, but rather to provide a setting and program whereby persons, both students, faculty, and administrative staff are better equipped for their journey in life.

What are some of those journey ingredients for you? A quiet place to read and study away from the dorm noise? A setting in which you are able to try and clarify important issues for your life here on cam-

pus? A chance to test out some of your beliefs and convictions with others? Those are just a few ingredients I see so far in the people and services of the Wesley Foundation. Can you suggest others?

A weekly prayer and worship service will be held on Monday evenings at 7:30 p.m. Clergy in the Glenville community will conduct the service.

Discussion groups will begin the week of September 21. They will go for six weeks, with one meeting per week. The one-hour discussion will be informal with participants assuming responsibility for the agenda. Discussion areas such as meditative prayer, biblical issues, ethical issues, and others can provide real possibilities for growth and relating to others.

The Wesley Foundation office will be open Monday thru Friday from 9 a.m. till 5 p.m. The building will be open at other times as it is being used.

ACTIVITIES—

(cont. from p. 1)

a.m. following Easter Recess"
7) Delete - Wednesday, March 17, 1982, "Last day to withdraw with W"

8) Add - Wednesday, March 24, 1982, "Last day to withdraw with W"

GSC Homecoming is October 3. The theme for this year is "Send in the Clowns", and all organizations are asked to build floats around the circus or carnival theme. Also, on Friday, October 2, a carnival will be held on the walkway of the amphitheatre.

Greeks Schedule Events

ΔΖ

A formal meeting of the Delta Zeta Sorority was held at the house on Monday, September 7. We trust everyone had an enjoyable holiday weekend.

We will be having a Rush party this Thursday (tomorrow) night at 7:00; at the sorority house, 305 East Main Street. We would enjoy having all you girls, freshman and upperclasswomen. Come down and join us Thursday.

Delta Zeta nominations for Homecoming Royalty are Dena Jo Dunlap, Queen; Vicki Parrish, Senior; LeAnn Ventura, Junior; Lou Ann Pettit, Sophomore; and Kim Beezel, Freshman.

The Study Turtle was awarded to Judy Devers and the wilted rose was given to Mary Grose.

There will be a pool party for Pickens Hall and Louis Bennett Hall residents only on September 11, 1981, from 7-9 p.m. at the pool in the P.E. Building.

There will be an organizational meeting of the International Student's Club on Thursday, September 10 at 12:30 in room 302 AB. Because we are electing officers, all members are encouraged to attend.

GSC To Offer French Classes

Glenville State College is again offering French courses this semester. Elementary French I and Elementary French II meet each Monday night at 6:30 in Room 301 Administration Building. The classes are designed to develop basic skills of comprehension, speaking, reading, and writing and to introduce students to the culture of France. Anyone interested in enrolling may contact the Registrar's Office at the College or come to the class meeting on Sept. 14.

The instructor is Mr. James B. Merzouk of Sutton. Mr. Merzouk has a BA degree from Anderson College, a MA from Ball State University, and a MA from Middlebury College. Mr. Merzouk has a number of years of teaching in the public schools of West Virginia and has taught part-time for Glenville State College the past three years. His major teaching field is French with minor specializations in Spanish and Latin.

ΦΒΛ

The Lambda Alpha Theta Chapter of Phi Beta Lambda held its first meeting Septmeber 2. Offices that were left vacant last spring were filled. Our new Secretary is JoAnn Freshour and Historian is Dale Carney. Welcome new officers and members. A reception is planned for Thursday, Septmeber 10, in the Verona Maple Room at 7:00. We hope all interested business students will attend. Dues will be \$10 this year. Please have your dues in by October 16 to Mark James.

Attention all Business majors and minors! An amendment to the by-laws of Phi Beta Lambda concerning attendance is in the process of being adopted. Its acceptance or rejection will be determined at the next meeting. If accepted, Seniors who, after January 1, 1982, have not been previous members will be unable to obtain membership. All members will be subject to the attendance policy as prescribed in the by-laws.

This amendment, if passed, is not intended to scare prospective members away. Its intent is to improve the quality of our organization through active membership which necessitates attendance!

ΣΣΣ

The sisters of the Delta Alpha Chapter of Sigma Sigma Sigma Sorority would like to welcome all upperclassmen back to campus. We would also like to extend a warm welcome to all incoming freshmen.

We held our first regular grub meeting of the semester on Monday, August 31, at the home of sister Michele Gallourakis. We take pride in announcing our nominees for Homecoming Queen and Court. They are as follows: Queen - Angel Goddard; Senior Princess - Pam Bickel; Junior Princess - Melissa Simpson; Sophomore Princess - Peggy Walton; and Freshman Princess - Sandi Gainer. We wish these girls the best of luck.

We would like to congratulate Pam Bickel for being chosen as

our new Membership/Rush Director. Pam replaces Cindy Hemingway, who had to leave school. We wish both Pam and Cindy the best of luck. We'll miss you, Cindy! Two new chairmanships were also appointed: Diane Sharps - Robbie Page Memorial, and Betty Wells - Alumnae Relations. Good Luck, girls!

We would like to remind everyone of our rush party on Thursday, September 10, at 7:30 in the ground floor Scott Wing Lounge of Pickens Hall. The theme is "Fantastic Voyage" and all girls are welcome.

Special congratulations go also to sisters Angel Goddard, Melissa Simpson, and Beth Carpenter and the rest of the GSC cheering squad for their superior performance at UCA camp at Virginia Tech. Way to go, girls!

Ladies

The Ladies of the White Rose would like to thank everyone who showed up for the dance last Thursday, September 1. Everyone helped to make the dance a great success and a grand way to start off the semester.

Our special thanks goes out to Chris Kiester and Bob Dinkler for the use of their stereo system. We would also like to thank Rick Carter and J.J. Jaffery for being our chaperones for the dance.

We especially want to express our appreciation to the brothers for their part in the dance. They helped us in many ways and aided us in keeping things running smoothly.

The next meeting of the Ladies will be Tuesday, September 8, at 4 p.m. The meeting will be held in the 3rd floor lounge of Scott Wing.

The Ladies would like to welcome back all the upperclassmen to campus and express our best wishes to the freshmen. We hope this semester will be the best so far.

THE GLENVILLE MERCURY (USPS 220040)

The Student Newspaper

Phone 462-7361, Ext. 290

Published weekly and entered as second class mail at the Post Office at Glenville, West Virginia 26351. Subscriptions \$5.00 a year.

Editor Michele Bruce
Editor Emeritus Becky Triplett
Sports Editor Steve Keenan
Photographers Debbie Moore and Rick Haveron
Copy Editor J.D. Brooks
Advertising Manager Betty Wells
IBM Operators and Typists Lou Fryman, Marilyn King, and Rhonda Anderson
Circulation Managers Carron Smith and Terry Mullooly
Reporters Cheryl Keenan, Janice Boggs, Steve Keenan, Jeannetta Mick, Terry Mullooly, and James Quinn



New Staff for GSC includes (left to right) Herman Heacker III -Computer Science, Ray Rappold - Geography, Clifford Young - Special Education, and Thomas Clayton - Mathematics.

Band, Majorettes Profiled

The front line of the Glenville State College Marching Band will have some new faces when they kick-off their new season Oct. 3. Leading the band will be the new Drum Major, Patrick Mollahan. Patrick is a sophomore majoring in Business Administration and minoring in music. Mr. Ed McKown will be directing the band once again this year.

Renee Carper, a freshman from Herbert Hoover High school, was chosen as the Feature Twirler. Renee recently received an award at the Kanawha County Majorette Competition, where she was rated as outstanding in large competition.

The new majorettes are: Head-Rhonda Anderson, a senior Business Education major, from Roane Co. Other Majorettes are Melissa Lowther, a freshman from Webster County majoring in accounting, Doretta Pugh, also from Webster County, majoring in accounting with a minor in music. Marilyn King, a senior English major from Gilmer County, Joyce

McNemar, a business major from Braxton County and Sarah Woods, a freshman from Mason County.

The band will also once again feature a flag corp, and June Casto, a sophomore from Herbert Hoover High will captain the team. Penny Poole, a sophomore from New Cumberland, Leesa Holder, a freshman from Belpre, O., Renee Oldham, a freshman from Parkersburg South, Dana Balachowski, a freshman from Vincent, O., Tara Lanaham, a freshman from Ripley and Kim Beezel, a freshman from Herbert Hoover High round out the flag corps.



Student Congress sponsored several of these new trash cans, in hopes that students will keep the beautiful GSC campus beautiful.

There will be a Glenville State College 4-H meeting in Scott Wing lounge, at Pickens Hall Tues. Sept. 12 at 4:30. Election of officers will be held.

Baptist Students Invited To Dinner

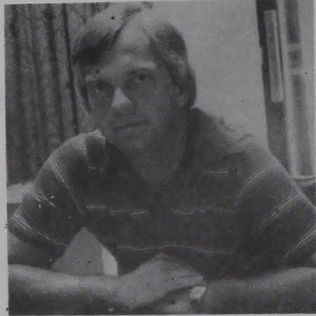
The First Baptist Church of Glenville would like to see students in church on Sundays.

A spaghetti dinner, in honor of GSC students, is planned for September 13. The dinner, free of charge, will be served following the morning worship service.

September 13 is also Campus Ministries Day for the American Baptist Churches in the United States and part of the morning worship will be devoted to those attending college.

The First Baptist Church welcomes everyone to their services and church events.

Those who would like to attend the spaghetti dinner are asked to stop by the Computer Center and leave their name with Earl or can just come to the September 13 service beginning at 11 a.m.



Kenneth J. Foglesong of Glenville is the new instructor in Business Administration, replacing Cinda Echard.

Mr. Foglesong of Glenville is a 1967 graduate of GSC, from which he received an AB degree, and he holds a MBA degree from West Virginia University.

Mr. Foglesong is also a Nationwide Insurance dealer in Glenville.

SUMMER'S PHARMACY
PRESCRIPTION DRUGGIST
8-8 PM

Food Stamps **IF IT'S GOOD FOOD** Monday - Saturday

Welcome **YOU WANT..** 8 A.M. - 9 P.M.

Visit **PIONEER** OPEN SUN.

GROCERY 10:am-7:30 pm.

Featuring:
MOHAWK & B.F. Goodrich TIRES
New & Recap Tires



CASH TIRES

computer-balancing
brakes
shocks
are offered!!

CASH TIRE SVC.
13 S. LEWIS ST.
GLENVILLE, WV 26351
462-5606

American Collegiate Poets Anthology
International Publications
is sponsoring a
National College Poetry Contest
-- Fall Concours 1981 --

open to all college and university students desiring to have their poetry anthologized. CASH PRIZES will go to the top five poems:

\$100 First Place	\$50 Second Place	\$25 Third Place	\$15 Fourth \$10 Fifth
----------------------	----------------------	---------------------	---------------------------

AWARDS of free printing for ALL accepted manuscripts in our popular, handsomely bound and copyrighted anthology, AMERICAN COLLEGIATE POETS.

Deadline: October 31

CONTEST RULES AND RESTRICTIONS:

- Any student is eligible to submit his or her verse.
- All entries must be original and unpublished.
- All entries must be typed, double-spaced, on one side of the page only. Each poem must be on a separate sheet and must bear, in the upper left-hand corner, the NAME and ADDRESS of the student as well as the COLLEGE attended. Put name and address on envelope also!
- There are no restrictions on form or theme. Length of poems up to fourteen lines. Each poem must have a separate title. (Avoid "Untitled"!)
- Small black and white illustrations welcome.
- The judges' decision will be final. No info by phone!
- Entrants should keep a copy of all entries as they cannot be returned. Prize winners and all authors awarded free publication will be notified immediately after deadline. I.P. will retain first publication rights for accepted poems. Foreign language poems welcome.
- There is an initial one dollar registration fee for the first entry and a fee of fifty cents for each additional poem. It is requested to submit no more than ten poems per entrant.
- All entries must be postmarked not later than the above deadline and fees be paid, cash, check or money order, to:
INTERNATIONAL PUBLICATIONS
P.O. Box 44927
Los Angeles, CA 90044

Inside The President's House

Have you ever wondered what is on the inside of President Simmons' house?

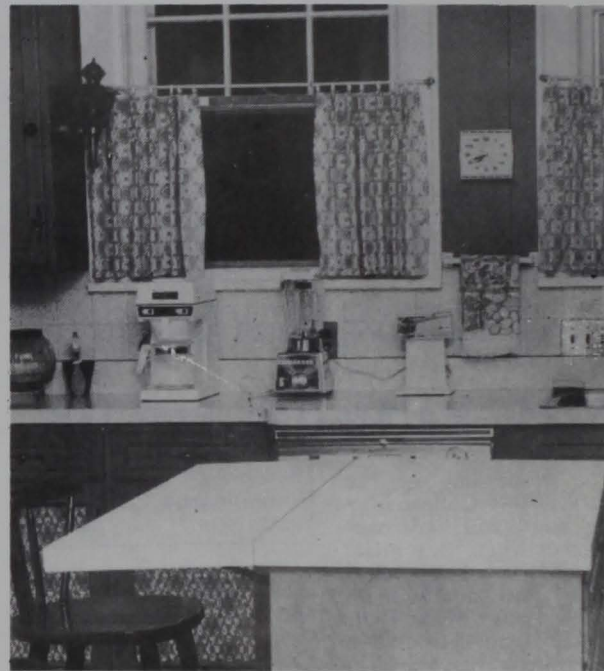
Students frequently pass the large estate on their way to and from the P.E. building, but have never had the chance to venture beyond its large front door.

This year, however, President Simmons and his family are planning occasions that will enable students to visit the residence at specified times.

These two pages present a sneak preview of what can be seen. Keep on the lookout throughout the year for the open houses to be scheduled for students.



President Simmons, his wife Dolores, and daughter Ann reside at this campus address during the school term. Ann is a student in 6th grade at Glenville Elementary, and Mrs. Simmons teaches at Troy Elementary.



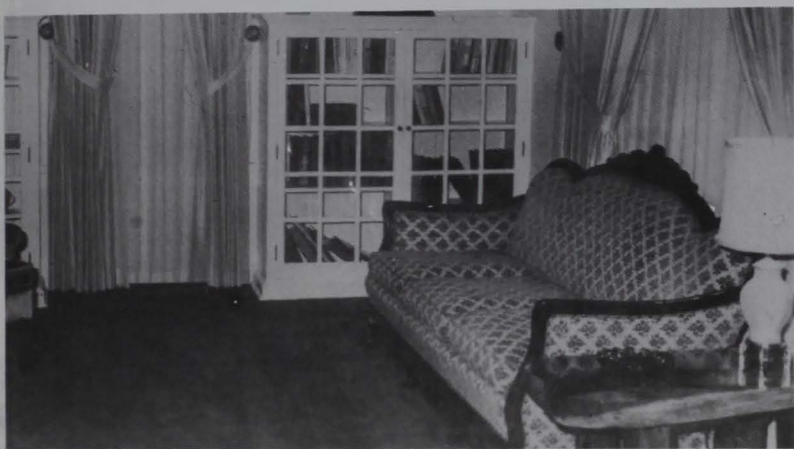
Built-in cherry cabinets adorn a spacious kitchen. The breakfast bar is in the forefront.



The impressive brick edifice shown above is the campus home of Dr. and Mrs. William K. Simmons and their daughter, Ann. Built in 1927 for \$20,000, it now is estimated at more than \$160,000.



A crystal chandelier adorns the dining room. The dining suite belongs to the Simmonses, and the pinch-pleated drapes were also added by the present occupants.



The Victorian sitting room features a Chippendale sofa and era clock. A Channel Chair is in the forefront. End tables are walnut and were handmade by the president.

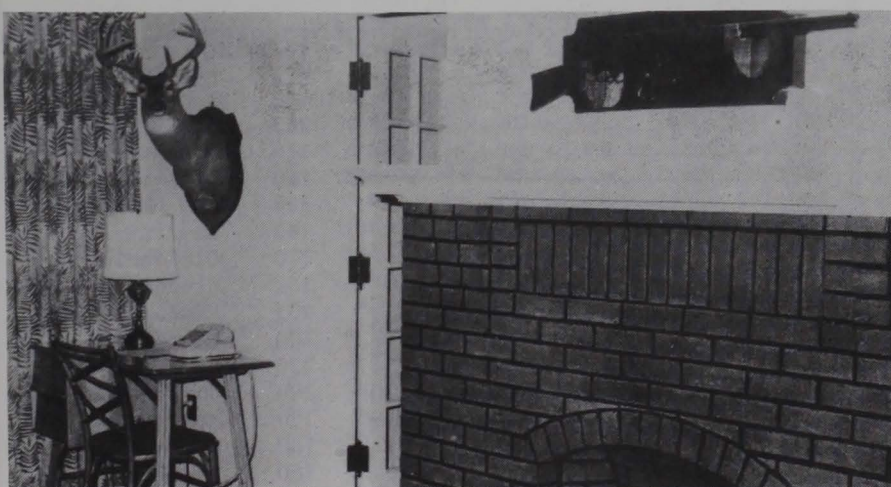


The Early American fireplace is one of three in the house. The attractive walnut coffee table was handmade by President Simmons.



Third floor was once used as bedrooms for students who lived at the president's home free, in return for completion of chores.

Photos By
Haveron



The Sunroom is a fitting repository for the 1873 Winchester given to Dr. Simmons by his uncle, who purchased it for \$12 at that time. His first deer (an eight-point buck) is mounted on the wall.

By Michele Bruce

The President's house was built in 1927. Two years later, President E.G. Rohrbough and family became the first occupants. His successors were President Harry Heflin, President D. Banks Wilburn, and President William K. Simmons, who has been residing in the house for the past five years.

The house itself consists of three floors, 13 rooms, four baths, three fireplaces, a basement, and garage.

Most of the furniture contained in the house belongs to Glenville State College, although President Simmons and his wife, DeLores, have made a few additions.

"We bought our own dining room table because I feel more comfortable eating off a table that is mine," President Simmons said.

Also, since the Simmons have moved in, they have repainted the house, carpeted the first and second floors, and have purchased new drapes.

"People are not nosey, they are just curious, and that is why the drapes are always closed in the house. It's just for privacy," President Simmons said.

Renovations for the house are not easily come by, however. All jobs, including repairs and additions over \$75, must be put on bid.

"That is why we have very few paintings on the walls," Mrs. Simmons said, "We don't want just any painting, we would rather buy a good piece of work done by a GSC student, and those paintings generally require a bid."

Besides the campus house, the Simmons' own a farm five miles outside of Glenville. The farm, having been in the Simmons family for over 100 years, is a place for them to get away from the business of the college on many weekends and during the summer months.

"We are very proud of the house on campus, but it is very institutionalized," President Simmons said, "And for that reason we enjoy visits to the farm where there is a home atmosphere."

The Simmons realize that the campus house is part of the college and they enjoy sharing it with the people of the college through social events.

"Another college president told me one time that we hold more social get-togethers in a president's home than any other college," Mrs. Simmons said. "We just enjoy entertaining."

Harriers To Run In First Meet

The GSC cross country team will travel to a meet at California, Pa. this Saturday to begin its season. The California State (Pa.) Invitational a meet with many NCAA participants will launch GSC in its quest for an elusive conference championship.

Twelve runners are available for Dr. James Hilgenberg, Jr., to pick his squad of seven for the Cal State meet. Returning runners are P.K. Coon, Billy Belcher, Steve Roberts, Craig Bock, Larry Taylor and Steve Keenan. The team's freshmen are Lee Haddox, Frank Lewis, Chuck McKnight, Steve Meckfessel, Dave Smith and Biddle Williams.

As a kick-off to the season, nine members of the team ran the prestigious Charleston Distance Run last week-end. Out of over 1500 starters, all of GSC's runners finished in the top 155. Frank Lewis was 38th, Larry Taylor 41st, Steve Keenan 63rd, Lee Haddox 68th, P.K. Coon

Nominations for Homecoming queen and court must be submitted to the Student Affairs office no later than noon on Sept. 9. A member of each class will be chosen for the court. Only seniors may run for queen.

The movie this week is "Circle of Iron" starring David Caradine. The movie will be shown tonight at 7 and 9 p.m. in the auditorium.

Any individual or group interested in participating in the 1981 Glenville State College Homecoming parade should contact Annetta Haddox in room 615, Williams Wing of Pickens Hall or Dr. A.T. Billips in the student affairs office.

80th, Billy Belcher 103rd, Steve Roberts 128th, Steve Meckfessel 147th and Craig Bock 155th. Dr. Hilgenberg ran also, finishing 556th.

After the first meet this week-end, the next meet will be the GSC Invitational, on Sat. Sept. 19. Hilgenberg is already asking for volunteers, as they will be needed. Any student wishing to help should notify Hilgenberg or the Athletic Dept.

GSC Team Faces Season With 42 New Members

"With the quality veteran players we have returning and the quality freshmen we have coming in, we are looking to field a respectable team. Hopefully, we will mold into a good football team as the season progresses." These thoughts were among those views expressed by Coach Frank Vincent concerning the 1981 edition of the Glenville State College football team. Sixty-eight players are practicing very hard in the stifling, late summer weather in preparation for the season opener, a tough one at Fairmont State, on Sept. 19.

A good recruiting year by Vincent and his staff should really make an impression in the Pioneers' outings this season. Of the 68 members of the squad, 42 are freshmen. Many of those, according to Vincent, are quality performers and will be looked upon for immediate help. Going into this past year's recruiting, the GSC coaching staff was looking for offensive and defensive linemen but didn't get very many. Instead, they had to settle for run-

ning backs, defensive backs and linebackers. Vincent remarked that in order to help GSC out, "some of our freshmen have to grow up in a hurry."

A total of 26 players return from last year's squad, which went 1-8-1. Seventeen of those players lettered last season. David Boggess and Reno Gandee, the team's only two seniors, and Mark Shafer, an all-West Virginia Conference selection at linebacker last year, will lead the team as they attempt to improve on last year's record.

Vincent stated that he feels his defense will be the strongest unit this season. "Defensively," Vincent pointed out, "we will be strong at the tackles, nose guard, front line and linebackers. The offense will be strong at the tackles, tight end and running backs."

The important quarterback position was left vacant when last year's signal-caller, Eddie Huffman, didn't return to school. Three players, Jeff Matheny, Mark Hash, and Ronnie Lane, are vying for the spot. Vincent said, "All three players have worked hard and I'm confident that each of them can play the position."

GSC will need to mesh its units together and play well if it is to survive the tough schedule it has in 1981. "We've got our work cut out for us," noted



Coach Frank Vincent

Vincent. He based his comment on the fact that on all GSC opponents on this year's schedule, only two had losing records last season. On Fairmont State, Glenville's opening game opponent, the GSC mentor remarked, "They are picked as one of the teams to win the conference title." While Vincent, in his second year at the GSC helm, realizes that the road ahead is tough, he is pleased with the hard working attitude with which his players are approaching the season. He remarked, "Our players have worked extremely hard the past two weeks. They're getting down to where they want to play ball. I'm encouraged by their attitude!"

After the opener with Fairmont State on Sept. 19, the Pioneers have another road game, with West Virginia State, on Sept. 26. Then, on Oct. 3, its Homecoming time, GSC will host West Liberty.

Following is the 1981 roster of returning players for the GSC football team:

Player	Pos.	Ht.	Wt.	Hometown
Adkins, John	OT	6'2"	230	Ravenswood
Bertus, Bernie	DB	5'10"	170	Follansbee
Boggess, David	HB	5'10"	160	Sissonville
Douglas, Joey	DT	6'2"	255	Big Chimney
Flint, Howard	OG	5'11"	190	Hamlin
Gandee, Steve	WR-K	6'	170	Clendenin
Gandee, Terry	DB	5'8"	145	Clendenin
Greathouse, Larry	OT	5'10"	205	Randolph, OH
Kendall, Terry	LB	6'	200	Spencer
Lanham, Henry	OT	6'	220	Ripley
Marchal, Andy	NG	5'10"	200	Charleston
Matheny, Jeff	QB	5'10"	180	Masontown
Parsons, Fred	DE	5'10"	180	Ripley
Pottmeyer, Scott	HB	5'9"	160	Lowell, OH
Singleton, Richard	FB	5'10"	190	Clarksburg
Taylor, Chuck	DT	6'	240	Wellsburg
Taylor, Scott	DB	5'0"	170	Elkview
Shafer, Mark	LB	6'1"	220	Clendenin
Ware, Steve	HB	5'11"	175	Clarksburg
Williams, Steve	TE	6'3"	220	Webster Springs
Martin, Ron	QB	5'11"	175	Mt. Hope
McCreary, Dave	OT	6'	220	Follansbee
Garnder, Tim	DT	6'	230	Belle
Husk, David	DE	6'5"	215	Beverly, OH
Hartman, Lee	OG	6'	220	Altamonte Springs
Hill, David	TE	6'2"	205	Parkersburg

**ROBERT'S
BROTHER'S
BAND**

**every Wednesday
night 9-12**

LIVE ENTERTAINMENT EVERY WEEKEND!!!!

**THE
FIREPLACE
INN**

POOL TOURNAMENT—
MONDAY NIGHTS FOR LADIES ONLY AT 7:30!!!!
WEDNESDAY NIGHTS FOR EVERYONE AT 7:30!!!

Featuring this Friday Sept. 11 and Saturday
Sept. 12 the band with the Rock & Roll

Sound!!!!

JOSHUA

FirePlace
Route 71
Box 2C
Glenville
462-3703

