

The Glenville Mercury

G L E N V I L L E S T A T E C O L L E G E

Volume 57, Number 16

Wednesday, January 22, 1986

Two Earn Internships

Two Glenville State College students have earned internships to work with the West Virginia Legislature.

Larry Beall and Patsy K. Hunt have been assigned legislators and will attend committee meetings and public hearings where legislation and issues are extensively discussed.

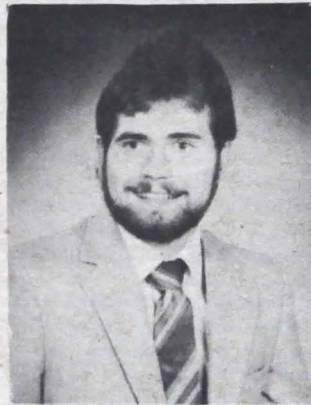
Mr. Beall received his internship through the Frazier-Singleton Student Legislative Program. This is a one-week internship and one semester credit hour is given to students participating in the program.

Ms. Hunt received her internship through the Legislative Fellows

Program. She has been assigned as an aide to Senator Thomas Loehr of Wetzel County.

The Legislative Fellows Program provides an opportunity for students to participate in a 16-week assignment with the Legislature, beginning in January. Fellows receive a \$150 weekly stipend and 12 semester credit hours.

Both programs allow students to aid legislators with issue research and other staff functions. In addition, the interns meet with representatives from all branches of state government, lobbyists, reporters, and legislative staff persons.



Phillips Wins \$5000

Glenville State College's Pioneer, Mark Phillips, was not only Gilmer County's first \$5,000 winner in the West Virginia Lottery, but so far is the only winner that has had this honor. Phillips, a 22-year-old senior from Madison, won his money from the purchase of a lottery ticket at Glenville's Mountaineer Mart in the Foodland Plaza on the opening day of the West Virginia Lottery, January 9, 1986.

After winning the money, Phillips drove to Clarksburg to claim his winnings at the lottery office. Because of an error in the office, he had to wait an additional day to receive his \$5,000 check.

Phillips was also asked by Mountaineer Mart to appear in a series of promotional activities for the state-wide stores, dressed in his Pioneer uniform.

Phillips stated that he deposited the money into his savings, but will probably have to withdraw a little later on to have a celebration party.

Student Teachers Prepare

GSC has announced its spring student teachers for 1986. This semester's list encompasses 11 counties. The student teachers will begin teaching the week of February 10. They are as follows:

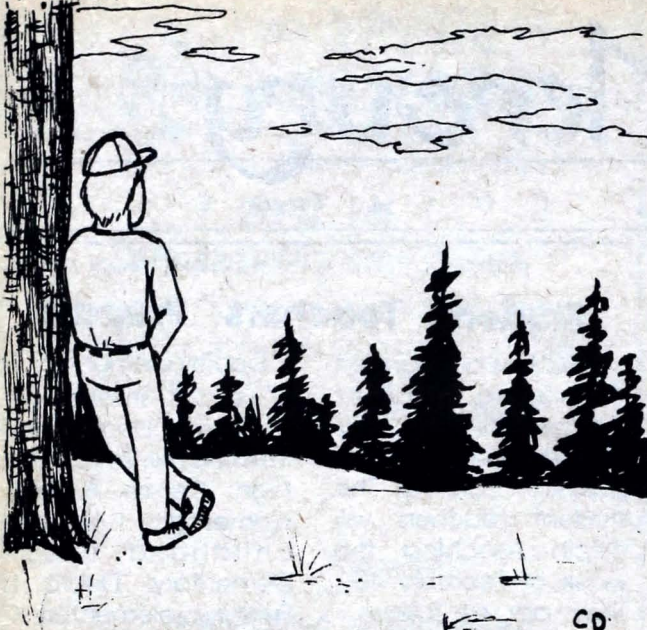
John E. Allen, elementary 1-6, Brooksville Elementary; Katrina M. Andrews, elementary 1-6/ science 4-8/ language arts 4-8, St. Marys Elementary/ Pleasants County Middle; Samuel J. Barger, elementary 1-6/ physical education 4-8, Glade Elementary; Ramona K. Beverage, elementary 1-6, Nettie Elementary; Tracie A. Black, early childhood/ elementary 1-6, Lincoln Elementary; Sondra D. Bleigh, elementary 1-6/ early childhood, Weston Central; Karen L. Brown, elementary 1-6/ mathematics 4-8, Lubeck Elementary/ Blennerhassett Junior High; Kristina E. Bush, elementary 1-6/ early childhood, Flatwoods Elementary; Regina L. Carrico, elementary 1-6/ early childhood, Emerson Elementary; Susan L. Carson, elementary 1-6/ early childhood, Tanner Elementary; Pamela L. Cochran, elementary 1-6/ early childhood/ language arts 4-8, Gihon Elementary/ Van Devender Junior High; Kitty L. Cox, elementary 1-6/ early childhood, Craigsville Elementary; Tammy C. Delaney, elementary 1-6, Spencer Elementary; Joseph

E. Dooley, elementary 1-6/ social studies 4-8, Muddlety Elementary/ Summersville Junior High; Denise A. Elza, elementary 1-6/ early childhood, Glade Elementary; Debra L. Freshour, elementary 1-6/ early childhood, Ripley Elementary; Eva M. Given, elementary 1-6/ language arts 4-8, Flatwoods Elementary/ Gassaway Middle; Melinda L. Harris, elementary 1-6, Peterson Elementary; Addie M. Holcomb, elementary 1-6, Flatwoods Elementary; Jan R. Hughes, elementary 1-6/ mathematics 4-8, Harrisville Elementary/ Pleasants County Middle; Sally C. Hyer, elementary 1-6, Flatwoods Elementary; Paula S. Jones, elementary 1-6/ mental retardation K-12/ learning disabilities K-12, Tanner Elementary; Sibylle G. Krause, elementary 1-6, Vienna Elementary; Carolyn S. Lemasters, elementary 1-6/ social studies 4-8; Kelly S. McFadden, elementary 1-6/ language arts 4-8, Sutton Elementary/ Sutton Middle; Carrie E. Meador, elementary 1-6, Muddlety Elementary; Janna I. Menear, elementary 1-6/ mathematics 4-8, Emerson Elementary/ Hamilton Junior High; Gregory A. Merritt, elementary 1-6/ mental retardation K-12, Gihon Elementary; Belinda J. Metz, mental

cont. to pg. 7



Mr. Charles A. Stark, Supervisor of Lease and Right of Way, Division 13, recently presented a \$1,200 check to Glenville State College president, Dr. William K. Simmons. The contribution to the GSC General Scholarship Fund was from Consolidated Gas Transmission Corporation of Clarksburg. President Simmons indicated that recent flood victims showed the greatest need for these monies.



A Friend In Need

When winter rolls in, it seems that it brings with it an isolated feeling for many people. The idea of cold weather and big snowfalls gives an era of being trapped for many. Depression can come on to people for many reasons: family, school, or friend. No matter what makes someone feel low about themselves or those around them, it is important for them to have an outlet to be able to release their anxieties in a healthy way.

There are also times when there is not a real feeling of depression, but just a feeling of loneliness, and the need arises for just someone to talk to. There are places that help and counsel free of charge to anyone who wants someone just to listen to them and give a strong shoulder of comfort.

Two of these places where a friend can be found just to talk to are the Wesley Foundation, here on campus, and the Summit Center on Mineral Road. Both of these centers offer informal counseling to those who just want a friendly ear.

Rev. Julian Sulgit, Director of the Wesley Foundation, stated that the doors of the center are open Monday thru Friday from 9 am - 10 pm, and anyone is welcome to stop by or call at 462-5574. There is no pressure in this comfortable relaxed atmosphere, and no names and addresses are asked or expected.

The Summit Center is also open through the week with the number being 462-5721. If there is no answer, there is a 24 hour, toll-free crisis hotline available at 1-800-352-3869.

No matter what problems arise, none are too big if they are faced with a friend. Just pick up the phone and take a step toward feeling better.

Beth W. Bragg
Editor

THE GLENVILLE MERCURY

Editor-in-Chief	Beth W. Bragg
Assistant Editor	Cheryl L. Keenan
Sports Editor	Jesse F. Skiles
Copy Editor	Elizabeth Gumm
Circulation Manager	Mitchell B. Moore
Advertising Manager	Shawn Shockey
Cartoonist	Craig Drennen
Typists	Belinda Nichols D.C. Keenan Barbie Nichols Lesla Hendershot
Headline Technician	Camella Tenney
Reporters	Pat Ireland Elizabeth Gumm Lisa McHenry Theresa McClure Greg Starcher
Advisor	Yvonne H. King

(USPS220040)

The Student Newspaper
Phone 462-7361, Ext. 290

Published weekly during the school year
Second Class Postage

Delta Zeta Sorority

The Delta Zeta sorority held an informal meeting at the Delta Zeta house, Monday, January 20, 1986.

The 1986-87 officers are as follows: President - Helen Carl, V.P. Rush - Kim McCutcheon, V.P. Membership - Tammy Miller, Treasurer - Theresa McClure, Recording Secretary - Melody Melrose, Historian and Chaplain - Robin Foreman, House Manager - Angie Boles.

Others appointed positions and chairmanships will be announced next week.

If anyone has any new ideas for fundraisers, please see Kathy King. Reminder to everyone to get Cabbage Patch money in. The winner of the Cabbage Patch doll was Michael Beckett of Glenville.

Scholarship chairman Cheryl Curry reminds everyone to start studying now to get a head start on the semester. Congratulations to all the girls as the sorority had an overall GPA of 2.90.

If you have unpaid bills, or are having financial difficulties please see Theresa as soon as possible.

The house manager, Angie Boles, awarded the weekly awards as follows: Pig Pen - Dottie Stalaker, and clean room to Tammy Miller.

Congratulations to two of our sisters on their recent engagements: Denise Elza and Kim McCutcheon.

"Happy Birthday" wishes go out to the birthdays so far this month: Peggy Spencer, Denise Elza, and Cheryl Curry. Way to go girls; you're a year older!!

The Delta Zeta's hope everybody had a nice break, and welcome back.

Delta Zeta sorority would like to invite all interested girls to attend the Joint Rush party this Sunday in the Ballroom. There are no obligations. Cost is \$1.00, dress attire required. Come and learn about Greek life.

Collegiate 4-H

Collegiate 4-H had their regular meeting January 15, 1986 at the Wesley Foundation.

Plans are being made for the Winter Council Circle and a host program. Be on the look-out for days and activities.

Plans are still in progress for the Wisconsin trip.

Come on, gang--let's get some more new members!!

Two new members joined us. They are: Ellen Compton and Bill Ramsey.

Watch for news of the next meeting.

Ohnimgohow Players

The Players would like to congratulate all those who were cast in GODSPELL. Production dates for the show are February 13-16. A COUPLA WHITE CHICKS SITTING AROUND TALKING, directed by Tim Mace, will be performed February 5. Anyone interested in working with these shows should contact David Sindledecker, Tim Mace, or any Ohnimgohow.

Players are reminded of our regularly scheduled meeting this evening at 5 p.m. in the Underground.

The TKE meeting was held on January 13 at the Wesley Foundation. The spring semester schedule was discussed and verbal invitations were distributed to potential TKE pledges. All interested pledges must attend the January 20 meeting or get in contact with a TKE officer. The Red Carnation Ball was held Saturday, January 18. Dinner was held at TKE brother Jeff Campbell's establishment, Sadettes, and the dance was held at the Gilmer County Recreation Center. We would like to send special thanks to Dr. and Mrs. Assar, Mr. Webster and his date, Nicole, for chaperoning. A good time was had by all who attended. All inactive and active TKE's are urged to attend TKE meetings to discuss dues and future social events. Congratulations to the TKE volleyball team which made it to the playoffs for the first time in four years. Way to go, Red Barons! Let's start the semester and year off right, support the TKE fraternity.

BCM

Retreat!!! Friday, Jan. 24 at First Baptist Church, Glenville. Topic - "Everything You Always Wanted to Know About Dating, Relating and Were Afraid to Ask." Retreat begins at 6 pm Friday, will conclude Saturday at 2 pm. \$2.00 will be charged for food. If staying overnight, bring sleeping bag or blanket.

Bible Study - Wednesday at 9 pm, First Baptist Church.

Sigma Sigma Sigma

The Delta Alpha Chapter of Sigma Sigma Sigma held a school dress meeting on Jan. 19, 1986 on Sigma floor.

We discussed plans for our Sigma formal and will set a date next Sunday.

Sis of the Week is Veronica Walker. Cultured Pearl goes to Angi, Kassi, and Allison. Sigma sweetheart goes to Sean, and the girls who went to Weston.

The Order of Diana held its first meeting of the spring 1986 semester on January 14 at the Wesley Foundation. Money from the calendar sales is past due and must be paid by January 31. Dues for this semester must be paid by Tuesday, February 4. New officers were appointed as follows: secretary--Michelle Garrison; treasurer--Peggy Spencer; reporter--Kathy Miller. Meetings will be held at 5 p.m. on Tuesdays for the remainder of the semester. All OD's are urged to attend the next meeting so that the activities for the spring 1986 semester can be planned. OD group pictures will be taken on Tuesday, January 28 at 4:45 in the Wesley Foundation. Dress clothes are required. A special thank you to the TKE's for inviting us to the Red Carnation Ball. A good time was had by all. Special congratulations to the OD's who won the 3-on-3 basketball tournament. Also, a belated happy birthday to OD coordinator Jerry "Two" Burkhammer.

Lambda Chi Alpha

The Beta Beta Chapter of Lambda Chi Alpha held their weekly meeting on Sunday at 6 p.m. in the Wesley Foundation. Due to the Super Bowl, next week's meeting has been changed to Monday at 7 p.m.

Jesse wants to remind Dave, Matt, Steve, and 'Guido' to meet him at his room Wednesday at 6 p.m. for a High Zeta meeting.

A rush has been planned for Thursday from 7-9 p.m. in the Verona Maple Room. Anyone interested in joining, please attend.

Reminders: Terry says January 31 is the last day to pay dues to get your discount, so please get them in as soon as possible. Also, check the Chi board for this week's events. All brothers are also reminded that they can now start accepting pledges for the Walk-a-Thon to benefit the food bank.

All May graduates are reminded that the deadline for ordering graduation announcements is Monday, February 2, 1986. Orders may be placed in the campus bookstore.

There will be no extra announcements ordered.

Inside Student Congress

Each week Student Congress will report on upcoming events. Hopefully this column will provide more open communication between the student body and Congress thus resulting in better representation. On Thursday, Feb. 6 at 8:00 pm Student Congress will sponsor a Student Forum in Pickens Hall main lounge. The forum will provide you with an opportunity to ask questions, voice concerns, and present any new ideas you might have. In addition to Congress members, members of the administration will also be present.

Congress swore in Andy Pfefferkorn as Senator-at-Large and Becky Rose and Tim Bennet as Pickens Hall dorm representatives. Congress recently decided that the problem students have involving lack of grades by midterm must be addressed. We are meeting with Dr. Flack on Thursday at 4:30 in the Student Congress office to discuss this matter. Anyone interested is encouraged to attend.

Letters to the Editor

Dear Editor,

Recently while setting up the gymnasium for a basketball game, our thirty-five year old bleachers, give or take a few years, on which the visiting team sits, broke. And to make a long story short it happens all the time, and after going through the process of fixing them again, and again one would think someone would say let's buy new ones.

Yet the time warp goes on and we still have 35 year old bleachers. Hey, who knows maybe someone is trying to get into the Guinness Book of World Records.

Oh, but yet we need a new brick customized two car garage or a few thousand dollars worth of trees and bushes and let's not forget Central Park out here in front of Louis Bennett Hall.

Then again though, it's fantastic that finally this campus does look nice. Thumbs up to President Simmons and his hard work to get things we need here at Glenville.

Now about the bleachers; face it, you can frost the cake, but you can't change what it really looks like. What this means is simply we can beautify the outside of the campus, but if we don't keep up the insides of the buildings we won't need bushes or trees anymore.

And don't think for one moment it's the athletic department's job because it's not. I think new bleachers had better be considered because someday graduation is going to come around and it will be heck explaining to parents and family that they have to stand up because the bleachers are broke.

Thank you,
Jimmie Dean

Dear Editor:

On December 18, 1985 immediately following the regular meeting of the GSC End Zone Club a discussion was held concerning the future of the Athletic Department and the more specifically the football program at Glenville State College. This discussion was held between President Simmons, Athletic Director Jesse Lilly, the football coaching staff, passive members of the End Zone Club and active members of the End Zone Club. Only time will tell whether or not this meeting will result in positive changes.

The active membership of the End Zone Club asked for more recruiting, counseling and tutoring and general cooperation from the Athletic Department and especially the football coaches. Mr. Vincent said that the lack of recruiting was the blame of his past assistant coaches. He stated that he could not tutor due to lack of time and that he was unaware that he had ever failed to cooperate with the End Zone Club. Again, only time will tell.

President Simmons pointed out repeatedly that GSC was limited due to a lack of funds for athletics and herein I agree. Mr. Vincent, however, vowed to bring in over 100 recruits next year....only time will tell.

President Simmons also stated that he had heard very little negative things from students, alumni or friends of GSC, except two letters he had received. I have personally heard a lot of talk from people vitally concerned about the future of the football program. Those people could have made their comments to me only because they knew I was dissatisfied about our present course of direction ... only time will tell.

Mr Vincent was questioned about the high rate of attrition in the football program over the past few years and he never did give a clear answer to this problem. This certainly is a valid question considering the fact that so many of these athletes chose to stay at GSC and continue their pursuit of a degree, I certainly look forward to seeing this trend reviewed only time will tell.

A number of the football players presented to President Simmons a list of thoughts on their feelings toward the football program. They are to be thanked for showing concern for a program they were dedicated to for so long. It is hoped that President Simmons considers their thoughts very carefully, since they are the ones most directly affected. . . . only time will tell.

As a graduate of GSC, I am quite proud to have been associated with the End Zone Club, GSC, the Athletic Department and to have had the opportunity to get to know the athletes more directly. Now that some of the more active members of the End Zone Club have quit maybe there will be a role reversal and the passive members will become more active only time will tell.

Whether or not any changes are made, attitudes are altered, or improvements come about only time will tell.

Sincerely,
Kenneth L. Fisher

All women interested in track should meet Thursday, January 23 at 12 p.m. in

room 208 of the Physical Education Building.

If you plan to go through the May 10 Commencement, you need to order cap and gown by February 1. This is accomplished by stopping in the Alumni Office in the Pioneer Center beside the Bookstore. Cost is \$15.00. Checks should be made payable to the GSC Bookstore.

Mayor Bennett Praises GSC

Glenville State College President William K. Simmons is pleased to share a letter he has received from Glenville Mayor John D. Bennett. The letter reads: "On behalf of the City of Glenville and myself, I would like to commend you, your staff and the students of Glenville State College for their efforts during the recent flood.

"The use of the dorms and the feeding of the flood victims as well as the help with security during the curfew was great. I commend you and your institution for a job well done. Thanks."

Dr. Simmons said he was. . ."glad we were here and could help in any way. That is what campuses and communities are all about."

The Curriculum Laboratory located in room 002 Clark Hall will be open this semester during the following times: Mon.&Wed. - 9:00 - 12:00 and 1:00 - 4:00; Tues.&Thur. - 11:00-12:00 and 1:00 - 4:00; Fri. - 12:00 - 1:00.

For additional information concerning the curriculum lab or its hours contact Annette Roberts (Ext. 292).

Dear Mr. Simmons:

On behalf of the citizens of West Virginia, I wish to express my sincere appreciation to you for the unselfish activities of you, the students, faculty members and staff persons at Glenville State College relating to the recent flood disaster which occurred in your area.

The response to this tragedy has simply been overwhelming from all sectors of our community. Your generous contribution of time and effort has enabled our people to recover and begin the rebuilding process of their lives, their communities and our State. Without your involvement and assistance, we would not have been able to respond as effectively to this massive crisis.

Thank you so much for your cooperation and consideration. I look forward to working with you in the future. If I can be of any service to you, please do not hesitate to contact me.

Sincerely,
Arch A. Moore, Jr.
Governor

Dear Editor,

This past Sunday, it dawned on me that Monday was Martin Luther King's Birthday. Rumor had it that some state schools in WV were closed as well as state schools in my home state of Ohio.

I'm not sure if we simply don't want to take a three day break and relax, or if the administration just doesn't recognize the birthday of one of America's greatest black leaders.

Knowing that a snow storm was coming our way, I unofficially called school off due, of course, to King's birthday and the lack of clear roads and sidewalks. But I didn't have enough time to call everyone and tell them; so as Jackie Mullens always said "study hard".

B. Scott Kitchen

Directory Available

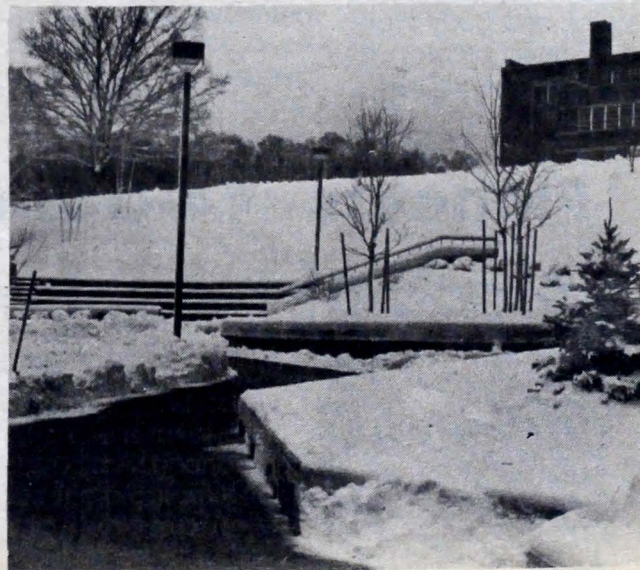
Copies of the 1986 GRADUATE SCHOOL GUIDE have been received in the college's career planning and placement office.

This directory contains information about master's and doctoral degree programs at over 400 colleges and universities in the Northeast and Midwest. Every graduate degree pro-

gram is listed along with majors, tuition, names of deans and satellite campus addresses. A cross reference section is provided so that students can quickly identify those schools which offer the degree program they are interested in.

Free copies are available while they last in the lobby of the Pioneer Center.

Photo by Mike Dynda



SPORTS

Pioneers Down Salem 83-70, Raise Record to 5-9

Since last week's issue, the Pioneers of Coach Gary Nottingham split a pair of games. They lost at home to WV State, 110-89, and were victorious at Salem, 83-70. They are now 5-9 overall and 3-5 in the conference.

Kenneth Taylor and Rudy Watts both turned in 20-point performances in the State game, but it was simply not enough. Nottingham commented on the loss by saying, "We were playing the second best team in the conference, plus we were without Paul Grier." The Pioneers were behind throughout.

Glenville had much more success with the Salem Tigers as they defeated them in Salem Saturday night, 83-70. Taylor led the way with 29 points, playing a strong inside game. It was a balanced attack for the Pioneers as Matt Bullett, Paul Grier, Steve Morris, and Rudy Watts all joined Taylor as double figure scorers.



Senior Kenny Taylor is Glenville's leading rebounder with 8.1 boards a game. He has also raised his scoring average to 18.9.

Nottingham, however, was not altogether pleased with the victory. "I was disappointed in our inability to throw the knockout punch; we had our chances to put them away earlier." Nottingham went on to say that it was not a great defensive effort (Salem shot 52%), but was pleased in that the

Pioneers were able to control the tempo. Glenville shot 62%.

Glenville will be playing three games this week. Monday they played at Alderson-Broadus, tonight they play at Tech, and Saturday they will play host to the University of Charleston.

Jesse's Place

This has not been one of the more successful years as far as Glenville basketball is concerned. There is, however, reason to believe that the two squads that represent Pioneerland on the hardwood, are two very special teams. What they have had to endure this season is really amazing.

Gary Nottingham's men's team has had to battle one problem after another. To begin with, Kenny Taylor cut his finger in an early game and missed three after that while it healed. Then there is Steve Morris and his shoulder problems. Morris has missed four games and has only started to regain his form in the last two games.

Off the court, there have been three players leave the team, plus the suspension of Paul Grier for a fight in the Wesleyan game last week. The Grier situation was extra distressing because game film clearly indicated that Grier was not the instigator. Despite all of this, the team is 5-9, and are playing pretty good of late.

Tim Carney's women's team has also faced a great deal of adversity. There have been four girls leave the team, two of which were very highly regarded recruits. Add to this the loss of Kim Creel, who has stress fractures in her legs. Creel should find out this week the extent of her injuries. Despite all of this, the Ladies are 6-4 overall and 5-1 in the conference. Even though our teams are not on top, we certainly have a lot to be proud of.

Jesse F. Skiles
Sports Editor

Pioneers 14-Game Totals

NAME	PTS	AVG	REB	AVG	ASSISTS
Matt Bullett	313	22.3	99	7.1	23
Joe Gandee	19	1.4	7	0.5	3
Paul Grier	102	7.8	42	3.2	20
John Harris	65	4.6	42	3.0	15
Glenn Johnson	3	0.3	3	0.3	0
Steve Morris	56	5.6	17	1.7	34
Greg Reed	18	3.0	7	1.1	13
Kenneth Taylor	208	18.9	90	8.1	3
Rudy Watts	213	15.2	96	6.8	24
Kirk Zellous	61	4.3	36	2.5	46
Others	35	4.3	28	3.5	12

Stowers Wins Race

Danny Stowers, a member of the GSC track team, won the Frostbite Five-Mile Run in Charleston on Sunday. His victory came against a field of 96 runners.

Stowers captured the lead shortly after a mile into the race and never relinquished it. His winning time was an excellent 26:53. The

Oak Hill native was ineligible for cross country because of his transfer here from Park College in Missouri. While at Park, Stowers went to the NAIA National Cross Country meet two years in a row.

Andy Jarrell, also a member of the Pioneer track team, finished eighth in the race. His time was 28:42.

Lady Pioneers Come Back to Defeat Salem, 56-51

Despite having only seven women remaining on the squad, the Lady Pioneers ran their record to 6-4 with a victory over Salem Saturday night. Coach Tim Carney's "super seven" utilized a strong second half to gain the win, 56-51.

Seniors Tina Burkhamer and Janice Loughner were once again the leaders for the Ladies. Burkhamer tallied 22 points while Loughner had 17 points and 15 rebounds.

Burkhamer is now only five points away from 1000 for her career.

Carney noted that the team could have easily folded on several occasions. They were down by 13 at one point, and by seven with only six minutes

remaining. He was pleased with the way everybody pitched in on the comeback. "Everyone has to contribute in the situation we have now... everyone."

Niki Randolph and Rhonda Hicks both contributed a good game rebounding, as Randolph was forced to see some front line duty due to the player shortage. She pulled down 10 rebounds, with eight of them being offensive.

The Ladies will continue their league schedule this week with three crucial road games. Monday they played at Alderson Broaddus, tonight they will play at West Virginia Tech, and Saturday they will travel to West Liberty.

Contest Continues

So far there have been 57 entries in the **Mercury** Super Bowl contest. There will be a \$10 prize awarded to the winning prediction and entries will be accepted through Friday. At this point, 43 people have chosen the Bears, and, as of press night, the Shufflin' Bears were decisive 9½-point favorites.

Here is how some noted personalities on campus feel about Super Bowl XX.

Frank Vincent (football coach)-"The Patriots have a lot of talent, but I think they are still a year away. This has been the Bears' year anyway... it will be the Bears by 10."

Paul Barnes (assistant football coach)-"Patriots by three."

Dr. A.T. Billips (Student

Services)-"It will be close, but you have to go with the Bears."

Dr. Duke Talbott (Division of Business)-"I don't think the Bears will cover the 10-point spread... I'll say Patriots by four."

Dr. James Hilgenberg (Social Science Division)-"New England could surprise, but my money is on Chicago, 17-13."

Wayne deRossett (Language Division)-"I would like to see New England, but I'll say Chicago, 24-17."

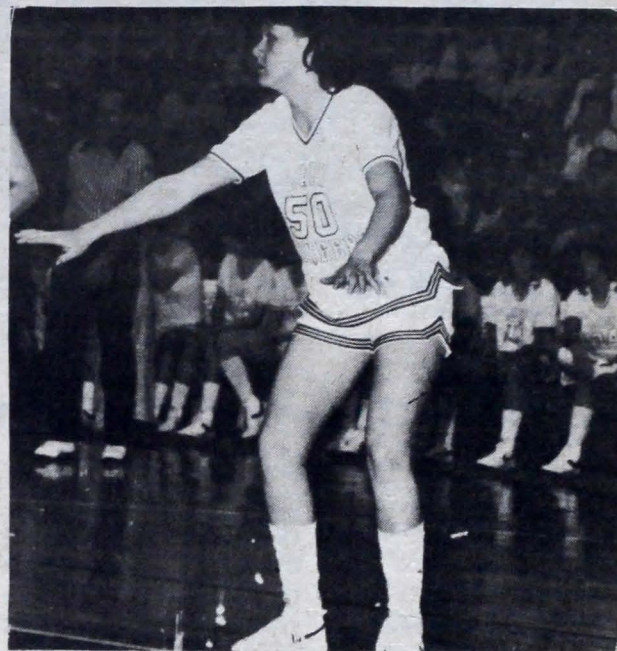
Joe Drahnak (Food Service Director)-"I want to see Chicago win it. I'll say the Bears by 10; perhaps I'll eat my words."

James Meads (Science Division)-"I have a snaky feeling about this one... it has to be the Bears."

Loughner: Ladies' Ageless Star

Janice "Tree" Loughner, rebounder extraordinaire for the Lady Pioneers, is now getting some special recognition for her special talent. Last week, she was ranked third in the nation in rebounding, averaging 14.6 boards a game. This is even more impressive when you consider that there are over 250 NAIA schools in the nation.

Loughner is the oldest player on the Lady Pioneer roster, with this being her fifth year at GSC. She was red-shirted during the 1982-83 season when she was injured. Loughner feels that the red-shirt year was a blessing in disguise, saying "the year of practice during my red-shirt season really helped; I learned a lot and really improved my game." Her statistics prove this comment. After averaging only 2.6 points and 3.1 rebounds as a freshman, she bounced back from her injury to average 4.1 points and 5.7 rebounds as the sixth man on the 1983-84 team. Last season she really came into her own, averaging 16.5 points and 11.2 rebounds a game, and



Janice Loughner continues to be a force in the WVIAC.

earning all-conference honors.

With this excellent season behind her, she could have hung up her sneakers for good; especially after she married Larry Loughner, the former all-conference gridder for the Pioneers. She decided to come back, though, and the move has paid off. "Coach Carney was the whole reason I came back. I did it for him," she said. She also praised her husband for being so supportive after she made the decision to come back.

Coach Carney is very pleased to have Loughner back, espec-

ially with the personnel problems he has been having. Carney stated, "Janice has come a long way since her freshman year; she is simply the most determined player I have ever had." Having played with the likes of Pam Minigh, Bunny Taylor, and now Tina Burkhamer, Janice has often been overshadowed by some great players on some great teams (the Lady Pioneers are 71-37 during Loughner's career). But, and I'm sure Tim Carney would agree, Janice has made her mark in Lady Pioneer history.

Lady Pioneers 10-Games

NAME	PTS	AVG	REB	AVG	ASSISTS
Tina Burkhamer	208	20.8	31	3.1	30
Kim Creel	116	12.9	82	9.1	16
Kim Fox	0	0.0	3	.4	3
Rhonda Hicks	110	11.0	57	5.7	3
Sarah Knapp	10	1.1	15	1.7	1
Janice Loughner	159	15.9	146	14.6	9
Niki Randolph	79	7.9	48	4.8	61
Marsha Shrader	17	1.7	11	1.1	5



Seated from left to right: Chris Montgomery, Robert Burns. Standing: John Curran, Jr.; Pat Shreves; Greg Metz; Paula Jones; Vickie Butcher; Dawn Lopez; Phyllis Parsons; Tammy Stalnaker; Randy Harper.

Photo by Mike Dynda

Spring Drama Season to Begin

1986 begins a new theatre season, and it is only fitting that GSC director David R. Sindledacker has chosen the electric musical, **Godspell**, as the first production of the season. Theatre goers will be glad to see that "Mr. S." as his students affectionately call him, has incorporated as many new faces as possible. He added that he wanted as many different types as possible, a kind of "cross-section of mankind." The cast includes: Robert Burns, Vickie Butcher, John Curran, Jr., Randy Harper, Paula Jones, Dawn Lopez, Greg Metz, Chris Montgomery, Phyllis Parsons, Pat

Shreves, and Tammy Stalnaker. Mr. Sindledacker would like to extend his deep appreciation to the music department for their cooperation. Accompanist is J.R. Aliff, and Jenny Morris will serve as musical director. **Godspell** was conceived by John-Michael Tebelak, with lyrics and music provided by Stephen Schwartz. Lawrence Caru, professor of play directing at Carnegie-Mellon University, has this to say about the play, "**Godspell** as conceived by John-Michael Tebelak is a jubilant celebration of the gospel according to St. Matthew. **It is a**

religious experience to be felt joyously! It is a release of one's spirit into the larger heart of mankind. In brief, it is the belief of John M. Tebelak and his generation that the passion of Jesus Christ was to teach love and joy in the hearts of people rather than hate and sadness."

Mr. Sindledacker hastened to add, "I want to dispel any thoughts or theories that this play will be sacrilegious. It will be celebrated according to St. Matthew." The play will be packed with the excitement and energy **Godspell** creates.

By: E.K. Gummt

Nichols To Be Contestant

Freshman Barbie Nichols, a business administration major from Clay County, has been chosen by the Clay County VFW to represent Clay in the Queen of Hearts pageant for the American Heart Association. The contest will be held at 7:30 p.m. on January 25 at the Charleston Municipal Auditorium.

One special highlight of the pageant is Peter Reckell, known to millions of daytime TV viewers as Bo Brady on the popular soap opera, **Days Of Our Lives**.

Competition will include personality, evening gown and streetwear. The winner will represent the

American Heart Association (WV affiliate) in various parades and public appearances during her year's reign.

Grand prize will be a trip to the Bahamas.

Barbie is the daughter of Brisen and Nancy Nichols. All of GSC will be keeping their fingers crossed. Good luck, Barbie!

Lexicographics By Lisa McHenry

Fact: Roughly speaking, the total number of words in the English language nears one million. Fact: The average American's practical vocabulary contains less than 30,000 words.

Somehow these two facts illustrate a rather wide chasm between what we do know and what we should know. Sure, who in their right mind is going to learn every single word in the English language? Of the rough million words stated, many of those are obscure or specialized for technical usage. But possessing a wider vocabulary can make the difference between getting that good job and eating tuna casserole all your life, insuring quicker promotions once you land that job, a higher score on a civil service test, wading through the latest Michener novel in half the time, affording more complete enjoyment of the sports page whether you are Peter Ueberroth or an aficionado, and numerous other advantages.

Let words be an enjoyment to you, enjoy while you learn and learn while you enjoy.

Before sating your thirsty minds with this week's word, I must say that it has been suggested I hold a contest for re-naming this column. I'm game for ideas so let me hear from you! You don't have to be a member of a word club to cudgel your brains and find a title to beat last week's.

Please send your suggestions to the Mercury Office in care of yours truly.

Did you know ... abstemious, arsenious, and facetious are the only three words in the English language which contain the five vowels in alphabetical order.

Ensemble To Perform

The Classic Players, the second program of the 1985-86 Cultural Affairs season, will perform Tuesday, January 28, 1986 at 8 p.m. in the Glenville State College Auditorium.

The Classic Players is a combination of first-desk players who come from the interesting Classic Chamber Orchestra which is a New York orchestra run as a cooperative by some of New York's "Free-Lance" players. Therefore, The Classic Players is an ensemble of seven of New York's finest solo and ensemble players. In addition to touring, the ensemble performs regularly in the major recital halls of New York. This virtuoso septet offers the magnificent repertoire for harp, strings and winds, including works by Ravel, Johann Strauss, Scarlatti, Saint-Saens and Mozart. Featured soloist with the septet is harpist, Susan Jolles, winner of the prestigious Naumberg

Chamber Music Award.

Their programs include standard chamber music favorites and one new composition which they introduced to the public in the course of this tour. Both written and verbal program notes are utilized in the regular program and there is an interesting demonstration and explanation by Ms. Jolles.

The program includes Jean Francaix's "Five Sonatas by Domenico Scarlatti," "Alla burlesca," "Andantino mosso," "Vivacissimo risoluto," "Pastorale," and "Vivo," Camille Saint-Saens' "Fantaisie (Op. 124)," Maurice Ravel's "Introduction and Allegro," Jerome Jolles' "Septet," Wolfgang Amadeus Mozart's "Quartet in D Major (K-285)," and Johann Strauss's "The Emperor Waltz (The 'Kaiser' Waltz)." This composition was arranged by Arnold Achenberg.

The program is free to the campus and public.

Continued from p. 1
 retardation K-12/
 elementary 1-6, Burnsville Elementary; Tame-
 la K. Moore, elementary 1-6, Ripley Elementary;
 Jennifer S. Phillips, elementary 1-6/ mental
 retardation K-12, Park Elementary/ Sumner;
 Connie M. Ross, specific learning disabilities K-
 12/ elementary 1-6, Belmont Elementary;
 Sharon I. Sheppard, elementary 1-6/ early
 childhood/ language arts 4-8, Peterson
 Elementary/ Weston Junior High; Jacqueline
 A. Shimer, elementary 1-6/ mathematics 4-8,
 Brooksville Elementary; Charles A. Smith, Jr.,
 behavioral disorders 7-12, Parkersburg High;
 Kaye L. Spiker, elementary 1-6/ specific
 learning disabilities K-12/ mental retardation
 K-12, Madison/ Nash Elementary/ Jefferson
 Elementary; Leah R. Stalnaker, elementary
 1-6/ early childhood, Weston Central; Terri C.
 Starkey, elementary 1-6, Spencer Elementary;
 Diana J. Tomlin, elementary 1-6/ mental
 retardation K-12/ learning disabilities K-
 12/ behavior disorders K-12, Burnsville Ele-
 mentary/ Sutton Elementary; Robin D. Vanhorn,
 elementary 1-6/ social studies 4-8, Pleasant Hill
 Elementary/ Calhoun County High; Connie S.
 Welling, elementary 1-6/ social studies 4-8,
 Ravenswood Grade/ Ravenswood Middle;
 Kent J. Wooffer, elementary 1-6, Tanner
 Elementary; Jane C. Woolard, mental retar-
 dation K-12/ learning disabilities K-12/ ele-
 mentary 1-6, Jefferson Elementary; James R.
 Aliff, music comprehensive K-12, Braxton
 County High; James S. Bailey, English 7-12,
 Calhoun County High;

Darla S. Baker, physical education K-12, Sutton
 Elementary/ Sutton Middle; Jerome D. Benson,
 music comprehensive K-12, Blennerhassett
 Elementary/ Blennerhassett Junior High;
 Vernon P. Brown, music comprehensive K-12,
 Hamilton Junior High/ Criss Elementary;
 Vickie L. Butcher, music comprehensive K-12,
 Burnsville Elementary/ Burnsville Middle;
 Pamela D. Carson, mathematics 7-12, Lewis
 County High; Mary Lou Darczuk, English 7-12,
 Spencer High; Jeffery A. Davis, social studies
 7-12, Braxton County High; Sheri L. Drake,
 business comprehensive 7-12, Ripley High;
 Kimberly D. Evans, chemistry/ biology, Parkersburg
 South High; Elaine J. Greif, English 7-12,
 Braxton County High; Melinda S. Gutberlet,
 art comprehensive K-12, Williamstown Ele-
 mentary/ Williamstown High; Mark E. Hash,
 physical education K-12, Burnsville Elementary/
 Burnsville Middle; Addie M. Holcomb, physical
 education K-12, Flatwoods Elementary/ Braxton
 County High; David P. Hopkins, general science
 7-12, Jane Lew Junior High; Beckey L. Keller,
 physical education K-12, Peterson Elementary/
 Lewis County High; Timothy A. Mace, English/
 oral communications 7-12, Ripley High;
 Roger D. Mason, physical education K-12, Creed
 Collins/ Pennsboro High; Kelly S. McFadden,
 library science K-12, Sutton Middle; Michael L.
 Moore, social studies 7-12, Edison Junior High;
 Richard B. Moore, physical education K-12,
 Burnsville Middle/ Burnsville Elementary;

Brenda A. Morris, business comprehensive 7-12,
 Braxton County High; Patricia A. Reel, physical
 education 7-12, Richwood Junior High; Radonna J.
 Rickman, music comprehensive K-12, Parkersburg
 South High/ Mineral Wells Elem.; Thomas K. Shuman,
 physical education K-12, Flatwoods Elementary/
 Sutton Middle; Charles A. Smith, Jr., physical
 education K-12, Rayon Elementary/ Parkersburg
 High; Lucy G. Stalnaker, physical education K-12,
 Davis Elementary; Jesse M. Stephenson, art
 comprehensive K-12, Parkersburg High/ Criss
 Elementary; Barbara L. Sturm, mathematics 7-12,
 Parkersburg South High; Sherilee L. Unger,
 music comprehensive K-12, Van Devender Junior
 High/ Neale Elementary; Lisa K. Walker, English
 7-12, Parkersburg High; Catherine J. White,
 physical education K-12, Weston Junior High/
 Weston Central; Melissa D. Whited, art compre-
 hensive K-12, Blennerhassett Junior High/
 Blennerhassett Elementary; Johnny B. Williams,
 social studies 7-12, Weston Junior High;
 Gregory A. Woods, mathematics 7-12, Spencer
 High.

Hanlin Wins

Pam Hanlin, a second semester freshman at Glenville State College, was the recent recipient of the GSC Alumni Association's Christmas gift.

Pam is a 1985 graduate of Calhoun County High School. She is the daughter of Glen and Connie Hanlin of Grantsville.

The Collegiate 4-H will be selling large cookies, especially for Valentines Day. Get your order in now (must be three days ahead of time). Anything printed/decorated. See Stephanie Phillips Apt. 200 or any 4-H member.

There will be a GSC Week Committee meeting Thursday, January 23 at 3 pm in the Little Theatre. All interested please attend. If you can't, contact Diane Bach in the Student Services office or Will Clark in Pickens Hall.

Averages Released

Fraternity and sorority grade point averages for the fall 1985 semester were released last week by A.T. Billips, Vice President of Student Services, and Diane L. Bach, Director of Student Life.

Of the four Greek organizations, Delta Zeta Sorority had the higher GPA with a 2.90. The Lambda Chi Alpha Fraternity followed with a 2.5927, the Sigma Sigma Sorority's GPA was 2.57, and the Tau Kappa Epsilon Fraternity's semester average was 2.5429.

Those members of the Delta Zeta Sorority who achieved an average of 3.0 or better were as follows: Patty Billips, Helen Carl, Mindy Gutberlet, Tina Hunt, Teresa Legg, Melody Melrose, Sandy Moyers, Kristi Moss, Dawn Parsons, Leisa Samples, Peggy Spencer, Tammy

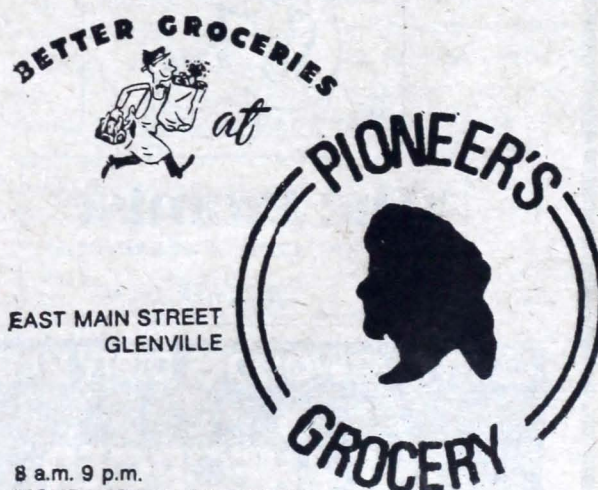
Stalnaker, Marilyn Sutton and Jenny Wilson.

Lambda Chi's with a 3.0 average or higher were: Tom Barnes, Matthew Cornett, Greg Martin, Tom Meadows, Richard Nichols, Jeff Squires, Sheldon Sturm, Johnny Bill Williams and Willard Wright.

Tri Sigma members with averages of 3.0 or better were: Sandy Bleigh, Angi Conley, Kassie Harsh, Jackie Mullens, Camella Tenney, Debbie Tice, Sam Unger and Lisa Waggy.

Members of the TKE Fraternity with 3.0 averages and higher were: Mike Euler, Mark Fleming and Jim Kirby.

The overall sorority GPA was a 2.7775, as compared to the overall fraternity GPA of 2.5678. The overall Greek average was a 2.65.



SPECIALS THURSDAY thru WEDNESDAYS

BUCK'S CASH/CARRY

462-7969 Sand Fork

Cleaned Flood-Damaged
Mens and Womens Shoes

\$12 and Less

1000-1300 pair of
Top Quality name brand
shoes

Dress
Casual
Tennis
Low cut boots

Port Sider
Aigner
Florsheim

Presented To You In The

Pioneer Spirit

By The

KANAWHA UNION BANK
MEMBER FDIC



P.O. Box 519 • Glenville, West Virginia 26351
(304) 462-7341
Subsidiary of Heritage Bancorp. Inc.

MOVIE FESTIVAL

**Ballroom-7:00p.m.
Wednesday, Jan. 22**

A REVEALING COMEDY

(So Fine)



From Warner Bros. A Warner Communications Company
© 1985 Warner Bros. All Rights Reserved

"The Promise"
is to love each other forever...

A UNIVERSAL PICTURE **PG**

© 1979 UNIVERSAL CITY STUDIOS, INC. ALL RIGHTS RESERVED

CLINT EASTWOOD IS DIRTY HARRY

THE ENFORCER

FLORIDA FIRM DEVELOPS HEARING AID

WITHOUT CONVENTIONAL
BATTERIES

Uses Tiny Rechargeable
Power Cell

If you can hear people talk and can't make out the words clearly, then this may be your answer. An extremely small hearing aid that fits entirely in one ear including its built-in power cell has been developed by a local manufacturing firm. With this aid you may be able to hear the slightest whisper and your close friends will wonder how you hear so perfectly. Plus you never have to buy conventional batteries ever. To acquaint the public with the latest strides in the hearing aid industry, we are giving actual-size non-operative samples which are smaller than the human eye, and are hidden deep inside your ear. These will be given FREE of charge to those who send the attached coupon. Wear it in the privacy of your home at no cost. YOU MAY KEEP IT FREE OF CHARGE. Especially good for Nerve Deafness. This type of aid is what people with a hearing loss have been waiting for since hearing aids were invented — nothing outside your ear — no wires — no plugs, and no battery replacement by you. This true life actual size non-operative Hearing Aid Model will be sent on a first come, first served basis. Clip this coupon now before you forget and mail to...

MAGNATONE

HEARING AID CORP.

Department No. 26310

P.O. BOX 964

CASSELBERRY, FLORIDA
32707

Name _____
Address _____
City _____
State _____ Zip _____
Phone _____

Maybe there is a substitute for experience.



Subscribe to The Wall Street Journal, and enjoy student savings of up to \$44. That's quite a bargain, especially when you consider what it really represents: Tuition for the real world.

To subscribe, call 800-257-1200, ext. 801 toll-free.

Or mail to: The Wall Street Journal, 200 Burnett Road, Chicopee, MA 01021
☐ Send me one year of The Wall Street Journal for \$63 — a saving of \$44 off the regular subscription price.
☐ Send me 15 weeks for \$26. ☐ Payment enclosed. ☐ Bill me later.

Name _____

Student I.D.# _____ Grad. Month/Year _____

Address _____

City _____ State _____ Zip _____

School _____ Major _____

These prices are valid for a limited time for students only in the continental U.S. By placing your order, you authorize The Wall Street Journal to verify the enrollment information supplied above.

The Wall Street Journal.

The daily diary of the American dream.

**Central West Virginia
Crisis Pregnancy Center
(1) 269-4852 (collect)**

Make your
decisions after
considering all
the alternatives.

Chapman's



Jewelry

Retailers of Precious Metals & Gem Stones

32 E. Main St.
Glenville, WV 26351
462-8736