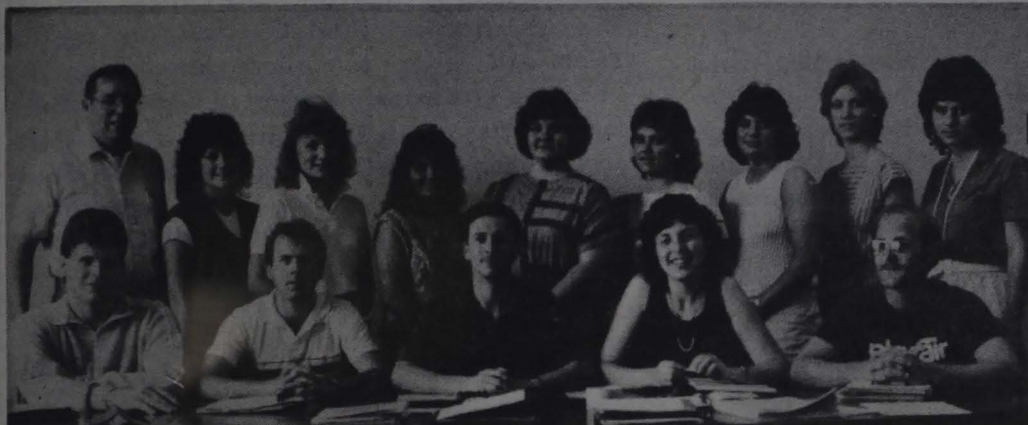


The Glenville Mercury

G L E N V I L L E S T A T E C O L L E G E

Thursday, August 21, 1986

Volume 58 Number 1



1986-87 Student Congress - Front row: Danny Ray, Gary Petty, Kenny Pack, Kelly Haynes, Brian Parsons, Back row: Dr. A. T. Billips, Beth Oppe, Jane Kelly, Tina McClung, Allison Miller, Marilyn Sutton, Melody Melrose, Cheryl Curry, Rhonda Simmons.

Congress Provides Activities

by Kelly Haynes

To quote the Glenville State College Handbook "Student Congress is an elected body of students serving as a medium for campus opinion. Activities, student - faculty relations, and entertainment are all coordinated and often originated by Student Congress." Now that you're drowning in political jargon let me try to elaborate on Student Congress and its functions.

Student Congress has

weekly meetings which are open to any interested GSC students. Homecoming, GSC week, entertainers, and dances are among the many Congress sponsored activities. Much of our planning for activities is done in committees and often involves students outside the elected members. Student Congress encourages anyone who has ideas, opinions, or general interest to get involved in as many campus

activities as academically possible. Watch for information on upcoming activities in the Inside Student Congress column.

Congress has 2 advisors. This year they are Bill Stackman and Dr. A.T. Billips. In addition to the advisors there are twenty elected student members which include 5 officers (President, Vice-President, Secretary, Treasurer, Parliamentarian), 4 class representatives, 6 senators-at-large, and 5 dorm representatives.

Registration

Freshman orientation and registration will begin at 8:00 a.m. on August 21 in the Ballroom, which is located on the top floor of the Pioneer Center. All students who have not previously registered should do so at this time. The process to register is a simple one. Upon entering the Ballroom the student will be assigned an advisor, be enrolled in classes, pick up any financial aid money and pay tuition.

Classes then begin on Monday, August 25. If the student decides to drop out of a class, he should be sure to fill out a drop-add slip. These slips can be obtained

Described

by Lesa Hendershot

from the student's advisor. The slip should be filled out, signed by the advisor and returned to the registrar's office no later than Wednesday, October 29. Students who comply with this will receive a "W" for withdrawal from the class. If the student fails to withdraw before this date a "WP" (withdraw passing) or "WF" (withdraw failing) will be received.

Follow the same procedure to add a class. Fill out an add slip, get it signed by the advisor and return the slip to the registrar's office. The last day to add a class or to register late is Friday, September 25.

Check-Out RFK

by Dr. Ronnie Faulkner

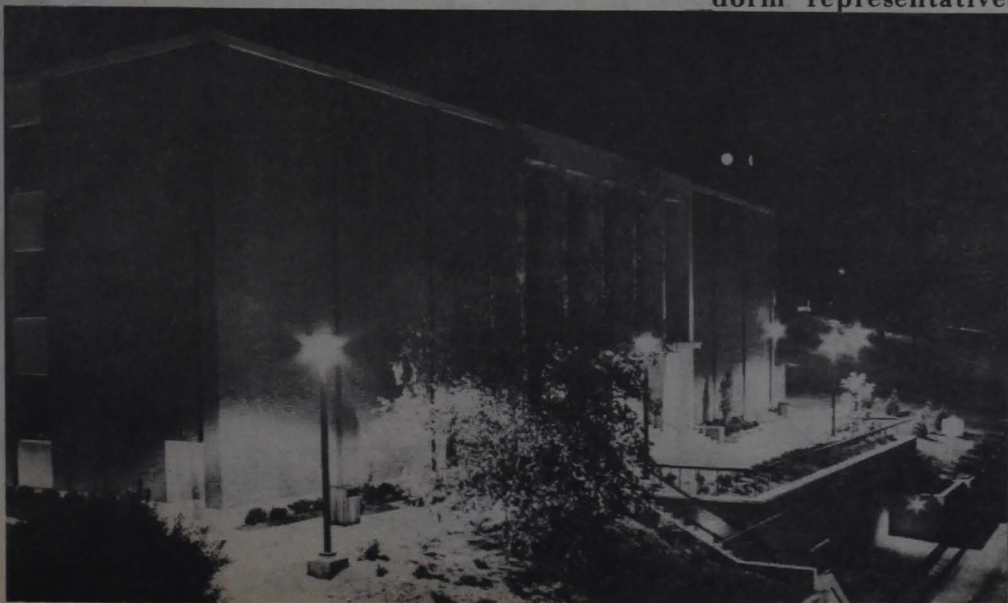
The Robert F. Kidd Library, located on the north end of Court Street, is a four story structure housing over 100,000 books, 280,000 microfilms, 10,000 periodicals, and 11,000 audio-visual items. The Library has available some copies of the *Student Library Handbook*, which provides basic information on the Library. These handbooks are available at the Circulation Desk to the left as you enter the building.

The Circulation Desk is where you charge out all materials, both books and audio-visual items. Be sure to bring your ID and present it to

the worker at the desk when you wish to check something out. Most books have a two week checkout period, while most media has a one week checkout. There are overdue fines for recalled materials that are not promptly returned.

As noted above, the library has a large collection of microforms (items reproduced on film for viewing on machines). Many magazines are on microfilm and are located on the third floor. If you need assistance using the readers or the coin-operated reader-printer ask for help on the first

cont. to pg. 6





Dr. William K. Simmons

Clinic News

The Kyle Clinic at 809 Mineral Road provides health services and medical coverage for GSC students.

Clinic hours are Monday - Friday 9:00 a.m. - 12:00 noon and 2:00 p.m. - 4:30 p.m. Appointments may be made by calling 462-5708. For after-hours emergencies an R.A. or house director must contact the Kyle Clinic Staff for you.

Health care is provided to all full-time students at no cost. This does not include some lab work, x-rays, emergency calls, or medications. Strict confidentiality of patient visits and records is maintained.

If you fall victim to the flu or one of the other plagues that occasionally pass through the GSC campus, the Kyle Clinic staff is anxious to help you get back on your feet.

Education does not mean teaching people what they do not know... It is a painful, continual and difficult work to be done by kindness, by watching, by warning, by precept, and by praise, but above all-- by example.

Ruskin

President Delivers Welcome

Welcome all students to Glenville State College!

Late August gives us warm days, gradually cooling evenings, the sound of crickets, and an air of excitement as we prepare for the opening of a new college year. The faculty and administration of Glenville State College look forward to the academic year with interest and enthusiasm.

The keynote for Glenville State College this year and in the years to come will be quality education. Glenville State College has a long history of quality education. The contribution this small college has made to higher education is outstanding. Graduates have excelled in teacher education, business, social work, science, the professions of medicine, and law. The qualities that have made the College strong in the past will be maintained as the needs of the future are met.

Foremost in the minds of those who mold the future of the College will be quality education, a stable environment, and an atmosphere of professionalism.

Regardless of where one finds himself, happiness and success, satisfaction and achievement come from within the individual. With the help of Glenville State College, you can achieve academically and socially if you have the desire and interest. Others have done so.

I take a great deal of pride in Glenville State College, its rural location, its students, its faculty, administration, and staff. It is my sincere hope that as you live, work, and study in this college community, you too, will experience this sense of pride.

William K. Simmons
President

Organizations Welcome Freshmen

For some of you this is your first extended stay away from home; for most of you it is your first taste of true independence. It's very exciting... and a little uncomfortable. You will be facing a new world: new situations, new people, new ideas, and new problems.

As a welcoming gift to this year's freshmen I would like to offer two words of advice--ASK and PARTICIPATE.

If you don't know where you are, what you are doing, or what to expect, ask someone! (Not the intelligent looking one; he's another freshman attempting to conceal his identity- ask the one with the blank expression; he's probably an upperclassman).

One of the most important questions you can ask is, "Where do I sign up?" Participation in campus activities will bring friends, fight boredom, and assure a smooth transition from home to college life.

Again, welcome to GSC. The Mercury staff wishes you a successful college career!

Mahala Strauss
Editor

On behalf of Student Congress--Welcome to Glenville State College. I am glad that each of you has decided to spend the next few years in and around the GSC campus. As the year looms ahead with new adventures and exciting possibilities, Congress encourages everyone to "GET INVOLVED!" The Student Handbook has a listing of several activities; find one that interests you and jump on the bandwagon. If you have any questions, comments, or concerns contact the Glenville State College Student Congress. Our office is room 103 in the Pioneer Center, extension 321. College life can be fun and rewarding, but one must be open and involved to make it so. Again, welcome to GSC and good luck with classes.

Kelly Haynes
Student Congress Secretary

THE GLENVILLE MERCURY

Editor-in-Chief	Mahala Strauss
Associate Editor	Darla Keenan
Feature Editor	Lisa McHenry
Copy Editor	Lesa Hendershot
Photographic Editor	Scott Kitchen
Advertising Manager	Bill Church
Cartoonist	Craig Drennen
Typists	Barbie Nichols
	Camella Tenney
Reporters	Kelly Haynes
	Elizabeth Hinger
Advisor	Mrs. Yvonne King

(USPS220040)
The Student Newspaper
Phone 462-7361, Ext. 290
Published weekly
during the school year
Second Class Postage



FOR THIS WE PASSED UP THE WORK FORCE?

Keep the Faith

by Beth Bragg

The Wesley Foundation is located on the GSC campus and is under the direction of Reverend Karen Frank, who is beginning her first year in Glenville. The Foundation is open everyday from 10 a.m. - 9 p.m. to all students who are looking for a quiet place to relax, study or spend time with friends. The Wesley Foundation will be hosting Bible study groups each Wednesday this semester at 9:00 p.m. They also will have Sunday Chapel services at 9:00 a.m. The Foundation also hosts various activities such as movies and examination quiet hours throughout the school year. All of these activities will be

announced in the *Mercury*. The foundation will also be giving out brochures this fall to better explain what they have to offer. Be sure to pick one up for future reference!

The Baptist Campus Ministry (BCM) is also an active part of the GSC campus. Reverend David Carpenter is the coordinator of these weekly Bible discussions. They also host different activities throughout the semester. These, along with all Bible-study groups will be announced in the *Mercury*. Watch for the days and times of these important activities!

Along with the campus Bible studies, there are also several

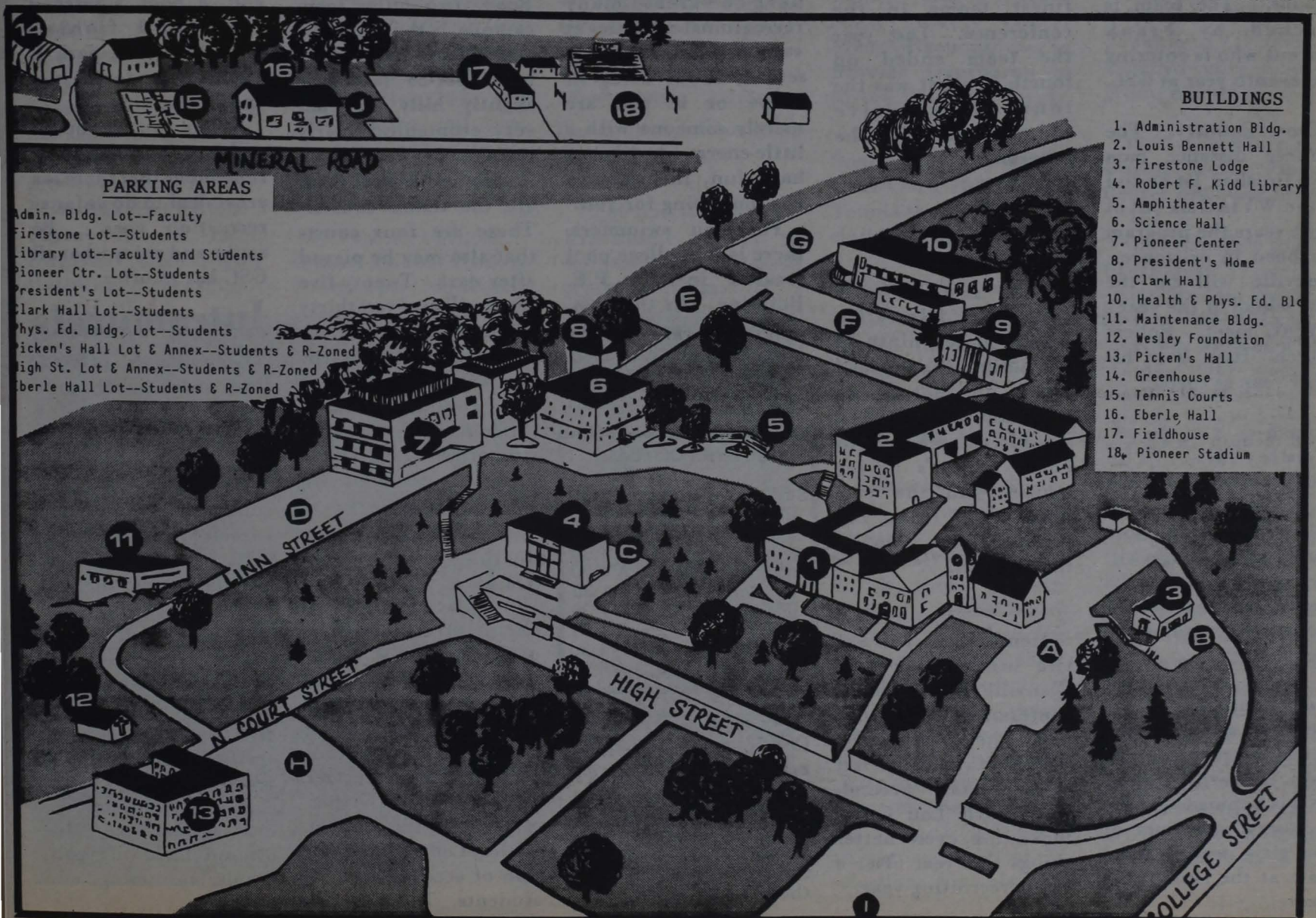


The Wesley Foundation.

churches within walking distance of GSC that hold weekly services. The First Baptist Church is located on Main Street, along with the Trinity United

Methodist Church. Directly behind the Post Office is the Church of Christ, and located on Mineral Road is the Good Shepherd Catholic Church. Next to the

courthouse is the Presbyterian Church and located on College Street United Methodist. The VanHorn Drive Baptist Church is located across from Foodland on Route 5.



SPORTS

by Jesse Skiles

Glenville Athletic Programs At a Glance

Many of you in the freshman class are entering GSC as incoming athletic recruits, while most of you will be viewing Pioneer athletics merely as fans. Glenville offers five men's athletic programs and four women's. Here is a very brief sketch of each.

Fall Sports

Men-

Football- The football team is coming off a rebuilding year in which they finished 2-7. They were 12-5-1 however over the two previous seasons. The team is coached by Frank Vincent who is entering his seventh year at GSC.

Cross Country- The Pioneer distance men have finished 1st or 2nd in the WVIAC six out of eight years the program has been in existence. Glenville will be the host school of the year's WVIAC meet. Robert "Butch" Hays is in his third year as coach.

Women-

Volleyball- The volleyball team of coach Kay Chico was unable to field a squad last season, but is hoping things will turn around this fall. The squad has fielded competitive teams in the past.

Cross Country- This is the first attempt at a women's cross country team. Coach "Butch" Hays is hoping to get the necessary minimum of five girls needed for a team at the conference meet.

Winter Sports

Men's Basketball- Pioneer Basketball has a long and proud tradition. Coach Gary Nottingham has continued this tradition by guiding GSC to two fourth place finishes in his three years as coach. This is super since the 14-team WVIAC is simply one of the toughest small-college basketball conferences in the land.

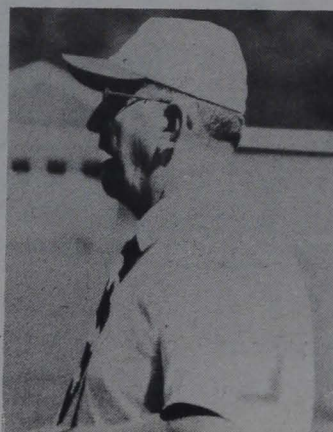
Women's Basketball- The Lady Pioneers of coach Tim Carney is consistently one of the finest teams in the conference. Last year the team ended up fourth in what was the tenth consecutive winning season for the program.

Spring Sports

Men-

Golf- Just two years ago, the Glenville golfers placed ninth in the nation. Last year's squad did not go to nationals, but finished third in the WVIAC. In Coach Carney's 18-year tenure with the program, the team has never finished lower than fourth.

Men's Track- This was the only sport at Glenville to capture a conference crown last year. They have won the WVIAC two of the last three years. Second-year coach Lou Geary looks for even better things this year after a super recruiting year.



Football Coach
Frank Vincent



Men's Basketball Coach
Gary Nottingham



Women's Basketball and Golf
Tim Carney

Glenville: A Sportsy Kinda Place

As a GSC student, you have a great many recreational activities at your disposal. If you are serious about being in shape or if you are merely someone with a little energy who likes to have fun, this campus has something for you.

For you swimmers, there is the college pool located in the P.E. Building. In the past, the pool hours have been 3-4 in the afternoons and 7-8 in the evenings.

PIONEER FOOTBALL

S-6 WV Wesleyan	H 7:30
13 Millersville, (PA)	A 7:30
20 Shepherd	H 1:30
27 WV State	H 1:30
O-4 West Liberty	A 1:30
11 Salem	A 1:30
18 Fairmont	H 7:30
25 Concord	A 1:30
N-1 WV Tech	H 1:30
15 Waynesburg(PA)	A 1:15

Women's Track- Coach Lou Geary will be taking over the women's program this year as well. Despite a small squad, last year's team performed admirably at the WVIAC meet.

Located on Mineral Road, two miles from campus, is the Glenville Golf Club. The nine-hole, par-35 layout is slightly hilly and has very economical yearly rates.

Also on Mineral Road are the tennis courts. These are four courts that also may be played after dark. Twenty-five cents will give you thirty minutes of lights.

Just about 200 yards past the tennis courts is Pioneer Stadium. Students may use the rubberized track at the stadium. Students are asked, however, to please utilize the proper footwear on the GSC track.

A place which includes pretty much all of the above is Cedar Creek State Park, located just three miles west of Glenville on Route 33 (the actual park entrance is another four miles from the turn off). When the weather is nice, Cedar Creek is a hub of activity for GSC students. The park has

tennis courts, putt-putt golf, a pool, a softball field and fishing facilities. The park is also popular for parties and sunbathing.

When you are bored and have nothing to do, remember that there is a great deal to do as far as recreation goes. Be active and enjoy what all GSC has to offer.

Intramurals

Glenville also offers a fine intramural program that operates throughout the school year. Athletic Director Jesse Lilly serves as the school Intramural Director.

Basketball is the most popular part of our intramural program. The basketball league has its season from mid-January to mid-March. Volleyball in the fall and softball in the spring are also popular team sports.

A variety of individual sports are also offered including golf, tennis, swimming, and others.

SCHEDULE

Wednesday, August 20

12:00 p.m.-4:30 p.m.

Residence Halls open to receive Freshmen. Unless the Student Services Office has been previously notified, all unclaimed room reservations will be cancelled at 10:00 p.m. Monday, August 25, 1986.

2:30 p.m.-3:00 p.m.

Parents Reception - Verona Maple Room, Pioneer Center. Parents will have an opportunity to informally meet with Administrative Officers and Faculty.

4:30 p.m.-6:00 p.m.

Picnic - Clark Hall Lawn. Open to all Freshmen, Faculty and Staff.

6:00 p.m.-8:00 p.m.

NON-REGISTERED: Residual Freshman Testing- Room 207, Science Hall. Required for all Freshman who did not participate in pre-registration in July. **PRE-REGISTERED:** Report to the Gym, Physical Education Building. Freshman

will play Faculty and Administrators in volleyball.

8:00 p.m.-10:00 p.m.

Playfair - Ballroom, Pioneer Center, Tennis shoes and casual clothes recommended.

10:00 p.m.-11:00 p.m.

Residence Hall Meetings. Information will be posted at the halls.

Thursday, August 21

7:00 a.m.-8:00 a.m.

Dining Room, Pioneer Center open for Breakfast.

9:00 a.m.-10:00 a.m.

General Freshman meeting in Auditorium, Administration Building.

10:00 a.m.-12:00 p.m.

NON-REGISTERED: Meet with advisor and plan class schedule. **PRE-REGISTERED:** Fee collection, ID photographs and copy of class schedule in Ballroom, Pioneer Center.

12:00 p.m.-1:00 p.m.

Dining Room, Pioneer Center open for Lunch.



The Administration Building is the site of many orientation activities.

1:00 p.m.-3:00 p.m.

General Freshman meeting in Auditorium, Administration Building.

NON-REGISTERED: Fee collection, ID photographs and copy of class schedule in Ballroom, Pioneer Center.

PRE-REGISTERED: Meet with Advisor. Ballroom, Pioneer Center.

3:00 p.m.-4:30 p.m.

Freshmen report to assigned room for small group meetings.

4:30 p.m.-6:00 p.m.

Dining Room, Pioneer Center open for Dinner.

6:00 p.m.-8:00 p.m.

Freshmen will play Faculty and Administrators in softball and tennis. Bus will leave from Pioneer Center every fifteen minutes to provide transportation to the field and courts.

8:00 p.m.-9:30 p.m.

Simon Sez with Bobby Gold-Clark Hall Lawn. Tennis shoes and casual clothes recommended.

9:00 a.m.-9:30 a.m.

General Freshman meeting in the Auditorium, Administration Building. Student Congress Freshman Representative will be elected.

9:30 a.m.-12:00 p.m.

Freshmen report to assigned room for small group meetings.

12:00 p.m.-1:00 p.m.

Dining Room, Pioneer Center open for Lunch.

1:00 p.m.-2:30 p.m.

Freshmen report to assigned room for small group meetings. Meetings will end with a campus tour and ice cream sundae party.

Friday, August 22

7:00 a.m.-8:00 a.m.

Dining Room, Pioneer Center open for Breakfast.

Literary Society

Interested in an extra hour general elective credit? Would you believe all you have to do is show up one evening a month for an hour? If so, we have the organization for you! The Literary Society of GSC generally meets one Thursday every month to discuss a book. Very informal and fun, these meetings lead to all kinds of new adventures. Some of the selections for this year

will be: *Leaves of Grass*- Walt Whitman; *Sons and Lovers*- D.H. Lawrence; *Brave New World*- A. Huxley. There is definitely something for everyone.

Besides, the group often watches videos and old movies.

So, don't be put off by the thought of reading - come join us and explore new horizons. If interested contact Wayne deRosset, advisor.

by Elizabeth Hinger



GSC men enjoy intramural basketball.

Financial Aid Available to Students

by Elizabeth Hinger



August Kafer

The time of year that has everyone digging deep in their pocket-books is once again upon us.

You, as a freshman, for the first time get to experience the little arrow and "Please pay this amount." As you look down, horror dawning on you - these people are asking for two thousand plus dollars. What do you do? (Running to the nearest recruiter is not the only option!)

Two small words - Financial Aid. Ah! Trust me, I am the woman with so much financial aid that the government gets to name my first two children!

Here, at GSC, the Director of Financial Aid is Mr. August Kafer. He offers various solutions to the crunch students face trying to meet the increasing costs of higher education.

There are two grants

offered by the U.S. Government. They are the PELL grant and the SEOG. They are based on the families' income and demonstrated financial need. In order to receive them you must file an FAF form. If you have not and think you are eligible, please come to the financial aid office.

Another helpful source is the Guaranteed Student Loan. The student may borrow up to 2500.00 per year at a

fixed rate of 8% interest.

The student does not begin repaying the loan until six months after he or she leaves school. Some restrictions apply to this loan, however.

If we listed all the types of aid available this would be one long story.

So, the long and short of it - (or should I say, rich or poor - UGH!) is if you have any questions, don't hesitate to drop by the office and talk to Mr. Kafer!

Student Services Offered

by Lisa McHenry

Located on the second floor in the Administration Building is an office which will likely be of particular interest to most incoming students.

This is the Student Services office. Upon entering the main lobby, one would encounter Mrs. Roseann Turner, secretary, who will handle student parking stickers and identification cards,

emergency loans, and the list goes on.

Dr. A. T. Billips is Vice President for Student Services, and along with Diane Bach, Director of Student Life, serves an eclectic variety of student needs. To name a few: housing, food service, organizations, student activities, and many other tasks which fall their

way.

Ms. Bach urges students to utilize this office in helping them get accustomed to life at Glenville State College. If this office can't help you directly, they will be certain to direct you to someone who can.

The staff of GSC's literary magazine, the *Trillium*, is being organized. There will be a meeting for those interested on Thurs., September 4, in Dr. Tedford's office (313 AB) at 3:00 p.m.

T&L Hot Dog

BBQ's
Beans and Cornbread
Pepperoni Buns
Hot Dogs
Nachos

18 E. Main St.
Glenville

NOTICE

Anyone wishing to be a part of the 1986 Homecoming Court should sign up, August 28-September 5, in the Student Affairs Office.

All Queen candidates must have pictures in the *Mercury* office no later than 12:00 noon Monday, September 8th for that week's edition.

Glenville Dry Cleaners

Pressing
Cleaning &
Alterations

In alley between T&L
Hot Dogs and Old Ben
Franklin store

Phone: 462-8711

"To Your Health" A Family Fitness Center

The staff of To Your Health would like to welcome the 1986 Freshmen and upper class students back to school and extend an offer to come and purchase a membership to our brand new Fitness Center.

To Your Health features two circuits of Nautilus, freeweights, aerobic exercise with nationally certified instructors, saunas, whirlpool spa, three Wolfe System tanning beds, vitamins, Amino Acid, and weightlifting paraphernalia.

In today's society, more and more people are staying physically fit. Our staff would like to invite you to take advantage of our special rate for college students. Come out and enjoy an introductory workout and tour the To Your Health Fitness Center.

Business hours are:
Mon. -Fri. 9 a.m.-9 p.m.
Sat. 9 a.m.-5 p.m.
Sun. 12 p.m.-4 p.m.

Foodland Plaza
Glenville, WV 26351
Tim Gardner, Manager
Bus. Phone: (304) 462-5095

BRIDGETTS

NAME BRAND: Ladies Clothing,
Junior Sizes, Fashion Jewelry

Foodland Plaza

Campus Organizations Outlined

by Lisa McHenry

Those students just arriving at Glenville, be they freshmen or transfers, may find useful this list of campus organizations. Whatever your interest is, there's a group for you.

For the science-minded, there is the American Chemical Society with Dr. Mary Jo Pribble as advisor; math, Chi Beta Phi, Dr. Mildred Disko-advisor.

Those involved in art may see Mr. Charles

Scott for Alpha Rho Tau; music, Marching Band, Percussion Ensemble, Jazz Band, Concert Band, Choir, M.E.N.C., contact respectively John McKinney for all band functions, Raymond

Jones for choir, or Harry Rich for M.E.N.C.

Those interested in theatre may consider the campus Ohnimgoh Players or our chapter of the National Drama Fraternity, Alpha Psi Omega under Dr. Robert Como.

To join Baptist Campus Ministry see Mr. Tom Shriver, Campus Bible Study see Ms. Lucille Phillips, and for Oikos see Dr. John Chisler. These groups are to further Christian study.

The Collegiate 4-H club under Mr. Neal Benson is a possible choice; or the Cultural Exchange Club, which helps international students under Mr. Charles Scott.

Two sororities on campus provide a sisterhood for the girls--Delta Zeta, Mrs. Thelma Samples, advisor; and Sigma Sigma Sigma under Mrs. Marilyn Dinkler; the Lambda Chi Alpha and Tau Kappa Epsilon fraternities, under Mr. David Jaffre and Mr. Nasir Assar respectively are available for men. Each

of these fraternities has their ladies' auxiliary, the Ladies of the White Rose and the Order of Diana.

The Speech Department has the forensic team with Mrs. Barbara Nicholson, while the English Department encourages assistance on the *Kanawhachen* and the *Mercury* under Mrs. Yvonne King. The literary magazine *The Trillium* is under Dr. Barbara Tedford. In addition, the Literary Society meets every month with Mr. Wayne deRosset.

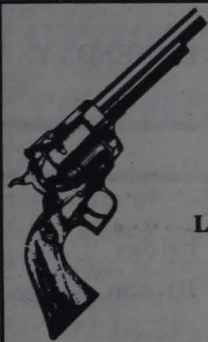
For those in forestry, surveying, or petroleum engineering, Mr. Ron Maxey advises the Petroleum Engineering Technology Club; The Forestry Technology Club is under John Brooks, and the Student Chapter of the WV Association of Land Surveyors is advised by Mr. Rick Sypolt.

Kappa Delta Pi is the honorary education fraternity, advised by Dr. Jo Cleek. Dr. Clifford Young heads the Organization for

cont. to pg.6



GSC Theatre Production of Pinnocchio



GLENVILLE WESTERN AUTO STORE

Located 315 W. Main St. by Drakes Auto Sales, Glenville



- *Complete line of Sporting Goods
- *Guns and Ammo
- *Bowhunting Supplies
- *Fishing Rods, Reels, and Lures
- *Largest Selection Available

Simmons, Tasco, Leupold, Redfield, Winchester, Ruger, Savage, Remington, Darton, Golden Eagle, PSE, Easton, and Many Other Name Brands

DARTON



TODAY'S CLOTHING FOR TODAY'S STUDENTS

*Midtown Clothing
Main St., Glenville*

MIDTOWN SERVI STAR

WE CARRY
SCHOOL SUPPLIES, LINENS, AND
HEALTH AND BEAUTY AIDS

Main St., Glenville

RFK

cont. from pg. 1

floor. There is also a reader-printer on first that produces paper copy from film. The cost is 20¢ per page. A regular Xerox copier is also available on the first floor and copies are 10¢ per page.

The Media Collection is housed on the ground floor and consists of records, films, tapes, and other audio-visual items. There are some small viewing and listening rooms available. If you need to use media go directly to the Media Office for assistance. The Media Office extension number is 313.

On the other hand, if you need help doing reports, class projects, etc., ask at the Reference Desk on the first floor and to your right as you enter the building. The Reference/Circulation extension

number is 314. Help is available at that desk on weekdays. However, the Library is open at other hours. Below are the hours during the regular term:

Monday - Thursday
8:00 a.m. - 10:00 p.m.

Friday
8:00 a.m. - 4:30 p.m.

Saturday
11:00 a.m. - 4:00 p.m.

Sunday
2:00 p.m. - 10:00 p.m.

There must be caution in using the *Library Handbook* location information until a new edition is prepared. The collection has been shifted and all bound periodicals are now on the first floor, including some government document periodicals. If you need assistance locating them or other document items, go to the first floor Reference Desk.

All freshmen will take part in a general library orientation given in conjunction with English 101 classes. Each class will come to the Library for a presentation and every student will be required to successfully complete a library worksheet. The purpose of this assignment is to familiarize you with the basics of library use.

The staff of the Robert F. Kidd Library is anxious to assist you. You are advised to ask for assistance from a professional librarian at the Reference Desk whenever possible. At other times you should seek help at the Circulation Desk, or, in the case of media, in the Media Center Office.

NOTICE: All students who have automobiles must register them with the Office of Student Services on the main floor of the Administration Building. There is a \$5.00 charge for each permit issued.

Organizations

cont. from pg. 5

Exceptional Children. Pi Gamma Mu is the social sciences student organization, advised by Dr. Paul Lutz. The Student Social Services Organization has Ms. Lucie O'Brien, and in the Education Division is the Student National Education Association.

The Business Division gives rise to the Student Accounting Society, Mrs. Cheryl McKinney, advisor, and Phi Beta

Lambda, advised by Ms. Rolanna Coberly.

Dr. Randy Hunt advises the P.E. Club for those interested. The Wesley Foundation, located across from Pickens Hall, is headed by Rev. Karen Frank. Student Congress has Dr. A. T. Billips and Mr. Bill Stackman as its advisors. Bill Stackman also directs the Pioneer Center Programming Board.

STOUTS *True Value* **Hardware & Variety**

School Supplies

Electronics (Boom Boxes)

10% off with school I.D.

Good 8/20 thru 8/30/86

DISCOVER THE MAGIC OF MONEY MASTER— THE 24 HOUR BANK

Kanawha Union Bank's service never stops! Literally! Because you can use the magic of Money Master at your nearest Money Master Cash Station! It lets you do your banking anytime, day or night, any day of the year, even weekends and holidays!

Money Master makes it more convenient than ever before to:

- Withdraw cash from checking or savings
- Make deposits
- Transfer funds between checking and savings
- Make loan payments
- Receive up-to-date balance information on your accounts



KANAWHA UNION BANK

We Give You More For Your Money Than Money

MEMBER FDIC

BETTER GROCERIES



**EAST MAIN STREET
GLENVILLE**

9 a.m.-9 p.m.

Monday thru Saturday

10:30 a.m.-7:00 p.m. Sunday

SPECIALS THURSDAY thru WEDNESDAYS

Hours:

Mon.-Thurs.

10 a.m.-6 p.m.

Friday

10 a.m.-3 p.m.

Closed

Sat. & Sun.



**Country Life
Natural Foods**

**Personal Care Products
Natural Vitamins & Minerals
Bee Pollen & Herb Teas**

**Tofu, Miso, Seaweeds
Dried Fruits & Nuts
Natural Snack Foods**

Phone:

462-8157

211 N. Lewis St. Glenville