

THE *Glenville Mercury*

GLENVILLE STATE COLLEGE

Volume 58 Number 19

Wednesday, February 4, 1987

Freshman Counselors Needed

by Harriet Whipkey

Diane Bach, Director of Student Services is recruiting freshman counselors. Approximately 40 upperclassmen are needed to help alleviate the confusion for students entering college. Counselors, working in pairs, must be willing to give up a few days of their time to answer the questions a freshman might have.

Although strictly voluntary, counseling can prove to be a valuable learning experience.

Counselors will need to be on campus by August 16 as training will be held the 16th through the 18th. If funding allows, this training will take place at Jackson's Mill. Freshmen will be arriving on campus August 19, and

orientation will be August 19-21.

Applications may be picked up now in the Student Services office. They must be completed and returned to Ms. Bach no later than 4 p.m. on Monday, March 3. If you have any questions, contact Ms. Bach at ext. 224.

Remember how you felt as a freshman and be a volunteer counselor!

Fall Trillium Available

by Harriet Whipkey

The Fall 1986 issue of *The Trillium* has arrived! You may pick up your free copy at the Language Division. This issue represents the work of seventeen contributors and contains some very interesting photos and drawings.

Editors are: fiction, John F. Curran, Jr.; poetry, Lisa McHenry; and art, Craig Drennen. Craig is the cover designer of this issue. His cartoon - kike artwork represents a refreshing departure from previous cover styles.

Editorial assistants are

James Bailey, Jesse Chapman, Elizabeth G. Hinger, Greg Miller, James Parsons, and Mary Ross.

Dr. Barbara W. Tedford and Dr. Robert M. Como are advisors for *The Trillium*, a literary publication of the Language Division.

Dr. Barbara Tedford, *Trillium* advisor, announced that plans are underway for a possible Spring issue. If you have a short story, poem, photo, etc., you'd like considered for inclusion, please submit it to Dr. Tedford or any of the

editorial staff: John F. Curran, Jr., Lisa J. McHenry, or Craig Drennen.

The *Trillium* staff is currently sponsoring a contest for high school students in the areas of short story and poetry. Deadline for submission to the contest is February 15, and entries are coming in. Winning entries will appear in the upcoming issue of *The Trillium*. There will also be a recognition banquet honoring the winners and their English teachers later in the spring, possibly in April.

BOR Presents Recommendations

The Senate Education Committee continued examining Governor Moore's education proposals as it heard from the Board of Regents with regard to higher education.

The Board presented budget recommendations including: \$9 million for a five percent across-the-board pay raise for all higher education employees; 5.4 million for additional salary increase based on promotion, merit, equity and other conditions; \$1.25 million to improve the state's college-going and college-retention

rates; and \$16 million to fund instructional and other programs to improve the quality of services at the state colleges and universities.

"In view of the budget, the governor has again given higher education the short end of the stick," said Senate Education Committee Chairman Keith Burdette (D-Wood). He explained that the governor's budget proposal is \$400,000 short of providing an average five percent across-the-board pay raise.

"The budget allows for a pay increase of only 1.5

percent for 1,200 faculty members. Few would get more than five percent pay raise, but most others would get the figures between 1.5 and five percent. It is disappointing to see that the governor's plan is unworkable, especially after he had emphasized how West Virginia ranks at the bottom of the 15 Southern Regional Education Board states in terms of average salaries for higher education faculty."

The Board also requested legislation that would authorize it to issue revenue

cont. to pg. 6



Dennis Wemm and John Curran view a scale model of the set for *Hughie*.

photo by Kris Rogers

Faculty Production Cast

by Lisa McHenry

The February faculty theatre production has been cast. Eugene O'Neill's *Hughie* will be performed with Dennis Wemm as Eric Smith and Richard Russell as the night clerk, Charlie.

The one-act play deals with Eric recalling his memories "of his late friend Hughie. His gradual realization that life goes on is both ironic and heartwarming."

"O'Neil wrote the play in 1941, but it wasn't produced until 1958, after O'Neill's death. It has been presented on television and the professional stage, starring such performers as Ben Gazzara and Jason Robards in the role of Eric."

Russell has performed in the roles of the sailor in *The Caine Mutiny* Court Martial and Bernard in *Death of a Salesman* in Williamsport, PA.

Russell fills the position of the Reference Librarian at the Robert F. Kidd Library on the GSC Campus.

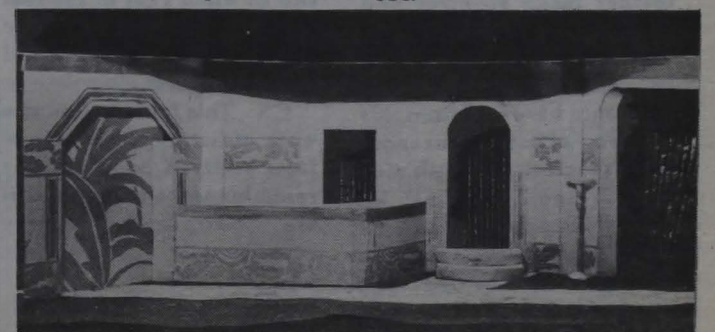
Wemm, an Assistant Professor of Speech and

drama courses, has performed in every kind of play, from Greek and Shakespearean tragedy to improvised stand-up comedy. He has left a trail of performances from his native Akron, Ohio to Presque Isle, Maine (his most recent role as Florenz Ziegfeld of *Ziegfeld Follies* fame). He will also be directing the production.

The set was designed by John Curran, Jr. and construction will begin this week.

Assistance on the construction crew is needed, along with lighting, sound, properties, and tickets personnel. Credit hours can be obtained for students working on crews.

Performance dates are Thursday and Friday, February 19 and 20, at 8:00 p.m. Admission is free for GSC students, \$2 for other students, and \$3 for faculty. For more information or to sign up for crews contact Dennis Wemm in the Language Division, extension 314.

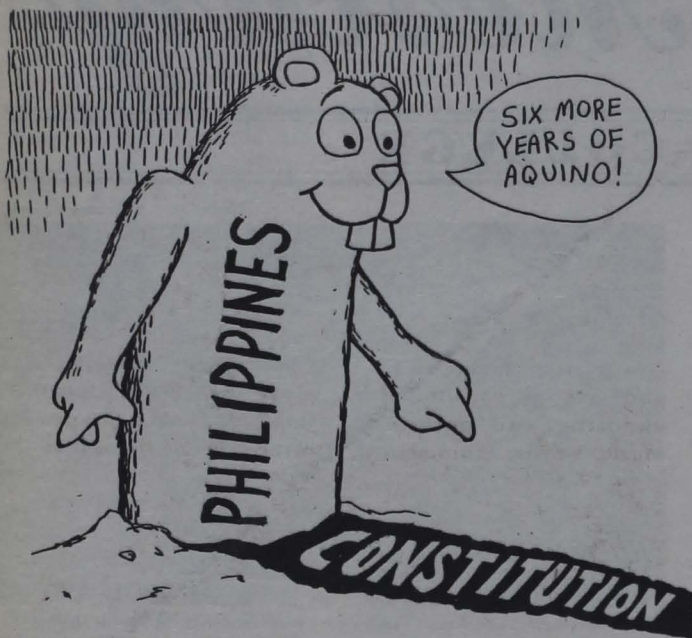


A model of the set for *Hughie*

photo by Kris Rogers

OPINION

"It Seems to Me..."



In the three and one-half years I have been enrolled here at GSC, the most commonly heard complaint has been about the food available on campus. There have been editorials, letters-to-the-editor, and even debate on the subject by Student Congress.

Some improvements have been made, but still people complain. I had decided that this was a problem that had no solution. As long as there are students and cafeterias, there will be complaints.

However, recently a friend and co-worker on the *Mercury* staff mentioned that he suffered from diabetes and that he could not obtain food on campus that was suitable for his diet. If he wishes to get a good meal, he must go off-campus.

Diabetes is a serious condition and diabetics must follow a strict diet. They must limit their caloric intake and many who also suffer from high blood pressure must limit their intake of salt.

An example of the problem diabetics would face in trying to get a meal on campus is: if my friend wanted to eat a salad, he

would have to eat it without salad dressing or bring his own, because the salad dressing on campus has too many calories and too much salt. I doubt that he is the only person on campus who suffers from an ailment which requires a strict diet. There are probably many people who cannot eat on campus because the food is too salty or greasy.

Also, many people are becoming more aware of the effects of a good diet on their health. These people are also concerned with the amount of salt, sugar, and fat in their diets and must also go off campus to get a meal.

I feel that it is inexcusable that students should have to go off campus to eat because of a medical condition or because they feel they need to do so to maintain good health. To meet the needs of these people would require very little effort on the part of the campus food service. Simple things such as the availability of low-calorie or low-salt foods would be a good start to providing a good meal to these people.

Greg Starcher
Editor

Letters

Dear Editor,

I have been a student at GSC for 3½ years now, until recently the efficiency of this institution has impressed me. Recently however, something came to my attention which has gnawed at my conscience ever since.

Before I begin my endeavor, I wish to make it clear that I have no grudge against athletes. I was an athlete in high school and several friends who are athletes at GSC.

To the point...Once upon a time (this December) I overheard an athletic supporter talking aggressively to some Administrators about why "his boy" had failed a class and become ineligible for the next roster...

On year later (January) the "boy" and a Professor appear in the Administrative Shrine as I am discussing class arrangements. It seems the teacher made an error and wishes to give the "boy" an Incomplete instead of an "F"...end of fable.

I would have forgotten this if two other occurrences hadn't crossed fate with me. First, upon passing an Athletic Supporter's office, I heard a worshiper say "I do better coach, It be OK!" The oracle replied "Well, I'll talk to the *?! and straighten

this out." Secondly, a person became ineligible because he/she failed a final, result, pressure applied to a courageous Doctor.

Question: If I was a commuter and "failed" due to unsuccessful bobsled runs to GSC, would athletic supporters come out of the woodworks and get me an Incomplete or a "c" instead? If I was a "nerd" and my glasses came untaped as my pocket protector fell apart would the "Nerd Nanny" get my final changed to a "C"?

If I am an average smuck will intimidated teachers up my grade if my mom calls?

Moral: "Daddy, I want to grow up to play college sports!"

"Why son, to promote Physical Fitness and gain understanding of team-work and sportmanship?"

"No dad, so I'll get a guaranteed "C" average because of Political pressure, and so when I get in the real world, the fact that I was the "star" will get me jobs and continued raises."

P.S. This fable is almost a work of fiction and if anyone feels guilty, I hope so...Any resemblance to real "moralistic" people is totally coincidental.

Yours truly
Zorro

I am a young man in a Federal Correctional Facility, and would like to find some interesting people to correspond with. Would you please put my name and address in your paper, so if anyone would like to correspond with me they could write.

Thank you very much. I could use a few friends.

Michael Lloyd 03419-050
P.O. Box 1000 SHU
Lewisburg, PA. 17837

Copies of the 1987 *Graduate School Guide* have been received in the college's career planning and placement office.

This directory contains information about master's and doctoral degree programs at over 400 colleges and universities in the Northeast and Midwest. Every graduate degree program is listed along with majors, tuition, names of deans and satellite campus addresses.

In addition, the directory includes a section of student reply cards which make it easy for students to write away for literature and application forms.

Free copies are available while they last.

Letters to the Editor should be signed and delivered to the *Mercury* office in a sealed envelope to insure confidentiality. All letters will be printed exactly as received. Spelling, punctuation, and grammatical errors will not be corrected. Please proofread your letter to avoid embarrassment.

The *Mercury* staff will sell Valentine messages to be printed in the February 11th issue. Valentines will cost 25¢ a line. Orders may be placed by calling ext. 290 or by contacting any staff member by Monday, February 9th.

THE GLENVILLE MERCURY

Editor-in-Chief	Greg Starcher
Associate Editor	Pat Ireland
Feature Editor	L.J. McHenry
Sports Editor	Jesse Skiles
Copy Editor	Lesa Hendershot
Photographic Editor	Kris Rogers
Photographer	Bill Ramsey
Cartoonist	Craig Drennen
Advertising Manager	Bill Church
Headline Technician	Violet Smith
Sports Reporter	Scott Johnson
Reporters	Cindy Houston
	Tinya Harl, Minnie McNemar, Harriet Whipkey
Typists	Barbie Nichols
	Marcy Green, Harriet Whipkey
Circulation Manager	Shawn Shockey
Advisor	Yvonne King

THE GLENVILLE MERCURY is published weekly during the school year for \$5 per year by Glenville State College, 200 High Street, Glenville, WV 26351. Second class postage paid at Glenville, WV. POSTMASTER: Send address changes to THE GLENVILLE MERCURY, Box 161, Glenville State College, Glenville, WV 26351.



THE ARTS



Members of the GSC Pep Band.

Pep Band Builds Spirit

by Lisa McHenry

The crowd filters into the gymnasium. The visiting team is on the floor shooting warm-up shots while the home team is in the locker room participating in those pre-game rites that are always a mystery to the public.

As more fans begin to fill the gym, the observer may not notice the activity in the corner of the stands. But when those students announce their arrival, they do it with style. The GSC pep band fills the gym with upbeat, rowdy music that gets the blood pumping and school spirit high. Several GSC musicians have organized to form the pep band and all reports indicate that they are being very well-received.

These students are playing on their own time -no credit hours are received. According to Dr. Gary Gillespie, Chairman of the

Fine Arts Division, these students have a strong sense of responsibility and maturity. They conduct rehearsals on their own time and are responsible for choosing and gathering music, moving equipment to the gym and then back to the music department, and making sure everything is secure. Dr. Gillespie stresses that though he sponsors the pep band, it is really directed "from the back of the room."

"What is extraordinary about this group," continues Gillespie, "is that they've been able to put all this together with little supervision and sound as good as they do." This experience is a valuable one for the members of the pep band. They are getting hands-on work as an important area of their education -- they are learning organization and working with others.

So now we know that the

musicians are benefitting from their activities at home basketball games. What about the crowd? the team? Coach Gary Nottingham spoke about the pep band: "I think it's good - it gets people involved." He states that he hopes it can continue for the rest of the season.

Nottingham points out that the pep band creates a positive feeling of spirit at the games and adds "Anytime that that creates atmosphere and creates home court advantage, it's good." The coach feels that the more people that get involved in supporting Glenville, the better it will be. The pep band is providing an aspect of morale that is good for recruiting and good for the players.

With the presence of the musicians at basketball games, we experience a blend of athletics and the arts in a most exciting way.

Traveling Show Exhibited

by Craig Drennen

The GSC art department happily announces that it is hosting an upcoming event.

Coming soon to the hallway gallery on the top floor of the Administration Building is a traveling art exhibit. The exhibition, titled "New Jersey Group,"

includes 38 pieces of work in various media, such as silkscreen, watercolor, pencil, pen and ink, and etching. The show will be in the show cases after the first week in February and all GSC students, faculty, and staff are encouraged to stop by and view it.

Roger's Photos Chosen



This rural scene in Webster County is one of three photographs entered in competition.

by Lisa McHenry

Kris Rogers, Mercury staff photographer, has become a finalist in *Photographer's Forum* magazine's Seventh Annual College Photography Contest.

Kris is a 1986 graduate of Buckhannon-Upshur High School. In the spring of 1986 he entered the 9th Annual Scholastic Art Exhibition here at GSC, designed to expose the works of high school art students. With

original black and white photographs he won an art scholarship to GSC.

The *Photographer's Forum's* editors received 15,319 entries from the United States and Canada. Kris's work was chosen as part of the best 7 percent. The winners will be announced February 18. As a finalist his photograph will be published in *Photographer's Forum* publication *Best of College Photography Annual 1987*.

Film Festival Outlined

The Language Division has continued the weekly film festival from last spring. The film festival provides good opportunity for viewing films which are not available on commercial or pay tv, at video stores, or in regional theatres. Most of the films are recent and all are subtitled in English, or have English dialogue.

That Object of Obscure Desire, 1976, is a film which was nominated for two academy awards. The director uses two actresses (playing one role to illustrate the unfathomable nature of sexual desire. French dialogue with English subtitles.

French Can Can, 1955, features a night club owner who re-discovers the cancan. "Renoir hurls his cancan artists at the viewer, tempting us with the consuming spectacle, which

is...ingerently kinetic and ineffably voluptuous." says Andrew Sarris of this film. French dialogue with English subtitles.

Himatsuri, 1985, has mysticism and nature thrust into conflict with the modern age when an old Japanese village is threatened by a developer. Japanese dialogue with English subtitles.

Days of Heaven, 1980, has a fugitive from the Chicago slums (Richard Gere) and a

shy, rich Texan (Sam Shepard) in love with the same woman (Brooke Adams). This beautifully shot film is directed by Terence Matlick.

The Passenger, 1975 is a suspenseful and haunting adventure. It is the story of a drained journalist whose identity is exchanged with a dead man's. He embarks on a treacherous journey through Africa, Spain, Germany, and England. Jack Nicholson and Maria Schneider star. English dialogue.

February 3	*SUGAR BABY	Germany
February 10	THAT OBJECT OF OBSCURE DESIRE	France
February 17	*FRENCH CAN CAN	France
February 24	*HIMATSURI	Japan
March 3	*DAYS OF HEAVEN	USA
March 10	THE PASSENGER	Italy

* Films from the West Virginia Library Commission.

Ladies Playing Well, Go To 8-7

Weekly reviews by Jesse Skiles
Game summaries by Scott Johnson

After a week of some pretty good play, the Lady Pioneers enter this week with an 8-7 mark. With several home games coming up, the next two weeks will be very pivotal for Tim Carney's squad.

Carney called the Tech loss (83-82) a very well played contest despite coming out on the losing side. "We rebounded well and had pretty good shot selection. It was simply a great basketball game...it just was unfortunate that we could not win it," Carney said.

Perhaps the squad was angry at the loss, because they put it all together against Alderson-Broadus. Carney commented on the game saying, "It was the best game we have played this season...at least on the road." Carney is very pleased with the effort that he is getting now and hopes that it will carry over to the remainder of the schedule. As Carney is quick to point out, second place is still up for grabs.

This week the Ladies will be faced with three key home games. If there was ever a squad that was in need of a cluster of home games, this is the bunch. Last night they hosted Wheeling, Thursday it will be West Liberty, and Saturday Dyke (OH) will be coming to town.

Grier

cont. from pg. 4

me, too. I'll just do what I can to help the team," Grier said. As a sportswriter, I can attest to the fact Coach Nottingham has almost always been complimentary of Grier's defensive ability.

Concerning this year's team, Paul feels that the Pioneers can pull everything together. "I honestly feel

that we can win the rest of them (games) if we play like we can. When we reach the defense goal that Coach gives us, we win. We just have to hang tough and strive for these goals," Grier concluded.

Next year Matt Bullett and Rudy Watts will be gone, and Paul will be one of the leaders. It looks as though leadership will not be one of Coach Nottingham's concerns in 1987-88.

GSC 94 A-B 68

The Glenville State Lady Pioneers placed five players in double digit scoring Wednesday to provide plenty of scoring as the Lady Pioneers routed Alderson Broadus 94-68.

Monique Johnson led the Lady Pioneers with 32 markers and 11 rebounds while Kim Creel added 16. Tammy Pence nailed 15 points with the other double digit scorers being Karen Wooters and Rhonda Hicks with 11 and 10, respectively.

The Lady Pioneers led by 39-26 count at intermission and had no trouble in posting their eighth win of the season. The win also moved their WVC record to 6-4.

WV Tech 83 Glenville 82

The Lady Pioneers fell on the short end of an 83-82 count Monday night at Tech Field House. Down by five, 46-41, at intermission, the Lady Pioneers kept the game close throughout but were unable to record the victory.

Monique Johnson led the Lady Pioneers with 24 tallies and 10 rebounds. Tammy Pence hit the nets for 19 markers and Kim Creel had 17 points. The Lady Pioneers shot an incredible 66 percent from the field but were plagued with 22 turnovers.

GSC LADY PIONEERS FIFTEEN - GAME TOTALS

NAME	REB.	AVG.	A	PTS.	AVG.
Tina Bullard	4	0.7	0	9	1.5
Kim Creel	99	7.6	15	154	11.8
Lisa Dolan	8	0.9	10	12	1.3
Kim Fox	9	1.0	10	21	2.3
Rhonda Hicks	102	6.8	28	129	8.6
Monique Johnson	121	8.1	38	357	23.8
Tammy Pence	112	7.5	14	197	13.1
Niki Randolph	56	4.0	92	85	6.1
Marsha Shrader	18	1.4	14	26	2.0
Paula Stepp	0	0	0	0	0
Karen Wooters	42	2.8	47	162	10.8

Jesse's Place

This has indeed been a rollercoaster basketball season here in Pioneerland. Our squads have managed to lead us on an emotional rollercoaster ride throughout the year.

After pulling a very fulfilling upset at UC, the guys dropped two this week to fall to 9-11, while the gals are now above water at 8-7. From week to week or even game to game, these teams are pretty hard to figure out.

In NAIA statistics released last week out of Kansas City, Glenville's Matt Bullett was third in the nation in scoring. In all likelihood, our man Matthew will not catch Pikeville College's (KY) Todd May who is averaging 42.6 ppg.

It is getting close to tournament time and I am glad to see the Pioneer fans getting more and more rowdy. This seems to be the pattern of February here at GSC. Hopefully our basketball teams will be hot at tournament time this year and Glenville fans invade Charleston during tournament week with the same type of party atmosphere as last year.

Hopefully by the time this story is in print, we will know who the new Pioneer football coach will be. I have heard so many rumors in the last two weeks that my head is spinning...it will be very exciting to finally see who takes over.

Through some back research, I have found that Aaron Woodhouse set the freshman sack record last season with ten. His total eclipsed Dave Darst's record of nine that was set in 1982. Darst incidentally is Glenville's all-time sack leader with 35 and also holds the single season record with 16. Woodhouse accounted four of his sacks in an incredible homecoming performance against WV State.

Jesse F. Skiles
Sports Editor

Alumni Game Hopeful

by Jesse Skiles

With the Pioneer Center Programming Board planning GSC Week this year, I've been given the opportunity to chair some very quality ideas. The one I chose however is something that I sincerely hope will be beneficial to all of my pals up in the Athletic Department.

This idea is an alumni basketball game.

The plan I am hoping to utilize would be the alumni of the 70's against the alumni of the 80's. Coach Lilly would coach the 70's squad with Coach Nottingham coaching the 80's unit. The idea is still very much in the preplanning stages, but Coach Lilly

Johnson Honored

by Scott Johnson

Monique Johnson was selected as the women's co-player-of-the week in the WVIAC. Monique had 56 points and 21 rebounds in leading the Lady Pioneers to a 1-1 week. Monique had game highs with 24 points and 10 rebounds Monday and 32 points and 11 rebounds Wednesday as the Lady Pioneers lost to Tech and pummeled A-B.

Dent Sets 800 Record

by Jesse Skiles

Sophomore Bubby Dent set the Glenville 800-meter record Sunday in an all-comers meet in Morgantown. Dent ran a 1:58.36 to eclipse Mark Price's four-year-old record of 1:59. It was Dent's first race as a Pioneer after transferring from the University of Charleston. He holds the state high school record in the event with a 1:54.

Glenville's only winners on the day came from the women's squad. Freshman shot putter Amy Hoffman took first with a throw of 36', while freshman distance runner Lori Barker won the 3200 with a time of 12:58. Andrea Davisson took 2nd in the 400 with a time of 1:05.46. Burkhammer joined Dent as top five finishers in the meet. Willis finished fourth in the long jump (21'4") and fifth in the triple jump (40' 2 1/2"), while Burkhammer tossed the shot 39'2" for fifth place. The 4x400m team (Calvin Coleman, Scott Hardinger, Jay Dawkins, and Bubby Dent) placed fourth with a 3:40.05.

The team's next meet will be the Hardee's Invitational in Morgantown on February 14.

has expressed an interest in cooperating with PCPB on this matter. Hopefully this is an idea that can be pulled off.

PAUL GRIER CAREER STATS

	PTS.	AVG.	REB.	AVG.	ASSISTS	AVG.
85-86	254	8.4	89	3.0	68	2.3
86-87	209	10.4	81	4.05	92	4.6
TOTAL	463	9.26	170	3.4	160	3.2

SPORTS

Pioneers Lose Two Close Ones, Fall to 9-11

Weekly reviews by Jesse Skiles
Game summaries by Scott Johnson

This year's edition of the Glenville State Pioneers is truly a team of streaks. Just when it looked like they were ready to explode, they faltered into an 0-2 week to slip to 9-11.

Pioneer coach Gary Nottingham commented on the A-B and Fairmont losses by saying "We could have taken advantage of opportunities. We had a big lead against Fairmont, but we were complacent and didn't put them away." Glenville had a 12-point lead at the half of the Falcon contest.

Nottingham feels that the 0-2 week will not have a large effect on the squad, citing that being ready to play in upcoming games will be a key. "A game is a game. If you prepare to play, you don't have to live with the outcome," Nottingham concluded.

This week, as is most always the case in February, the games are getting increasingly crucial. The Pioneers will play two games this week, both at home. Wednesday they will host West Liberty and Saturday they will host Wheeling. Nottingham alluded to the games saying "We are running out of time to make a move. Our goal is to be in the top four of the WVIAC, and have a winning season. This week is very important as is any week."

Somehow, I have to wonder if any other conference school plays a schedule as tough as Glenville's. Take a look at some of these opponents.

- WV State 15-3
- A-B 15-4
- Waynesburg 12-4
- Rio Grande 19-4
- Charleston 11-6
- Wesleyan 12-6
- Gardner-Webb 13-7

That's a combined record of 97-34 (74%). These schools account for seven of Glenville's losses.

Fairmont 73
Glenville 71

The Pioneers had the hold on the Falcons Monday night but were unable to finish the job. With the Falcons down 40-28 at the half it looked as if the Falcon had broken its wings and was useless. Someone forgot to warn the Pioneers of the sharp claws a Falcon possesses though. The second half saw the Fairmont State Falcons claw to a 73-71 victory over the Pioneers of Glenville.

Glenville was looking for a fourth straight victory but were unable to record it. There were several bright spots for the Pioneers, such as Mike Hughes' entrance to the game in crucial moments.

Hughes connected on a follow-up and hit the foul shot late in the game to keep the Pioneers alive.

Other bright spots were the usual, Matt Bullett connected for 30 points, and Rudy Watts had 19 markers and 11 rebounds. Todd Smith and Paul Grier each knocked down eight with Paul adding seven assists.

A-B 76
GSC 71

Alderson Broadus was not willing to see the Glenville State Pioneers sweep the regular season series with them, for they remember all too well the night in Glenville when the Pioneers upset them. Well, this time it was the Battlers on the home hardwood and it proved to be helpful in front of 1,100 Battler fans.

The Pioneers once again gave the Battlers all they wanted but were not strong enough in the second half. Glenville lost a 27-25 halftime lead and fell 76-71. Matt Bullett hit for 33 markers, Rudy Watts nailed 17, and Paul Grier added 10 in the losing cause.

The loss dropped Glenville to 9-11 on the campaign and 7-8 in WVC play.



Rudy Watts fires a jumpshot during the second half of the Fairmont game.

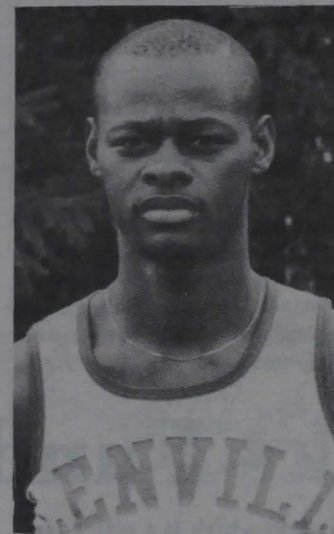
photo by Kris Rogers

Grier: The All-Purpose Guard

by Jesse Skiles

Paul Grier does not play like a sophomore. Last year he didn't play like a freshman. Throughout his career as a Pioneer, Grier's all-around guard play has been a very vital part of the GSC program.

It all began last year when Paul arrived in Glenville from Charlotte, North Carolina. How, you may ask, did a guy from Charlotte end up in cute little Glenville? Grier says that a combination of events led him to the Mountain State. First off, Nottingham came across



Paul Grier

Grier while recruiting former Pioneer Andy Berry. The topper for Grier, however, was the fact that his dad really wanted him to come to GSC. "Dad was impressed with Coach Nottingham, and felt that this was the best place for me," Grier said.

Paul says that adjusting to the rural West Virginia lifestyle has not been a problem. "Some people knock it here, but I think it depends on the person. If you are just nice to people, everything will work out," Grier said.

His adjustment has been smooth on the floor as well. It did not take him long to crack the starting lineup as a freshman and he has been in the lineup ever since.

Grier assessed his situation on the club as one of diversity. "Basically I'm out there to run the offense and provide some strong defense. I also know that Coach expects some points out of

GSC PIONEERS TWENTY - GAME TOTALS

NAME	REB.	AVG.	A	PTS.	AVG.
Matt Bullett	139	6.9	42	614	30.7
Tim Collins	0	0	-	0	0
Joe Gandee	33	2.0	35	30	1.8
Jon Ginn	2	.33	9	0	0
James Glover	27	2.7	2	45	4.5
Paul Grier	81	4.05	92	209	10.4
John Harris	106	5.3	11	169	8.4
Mike Hughes	8	1.1	2	7	1.0
John Jividen	36	1.8	10	51	2.5
Drew Taylor	-	-	-	-	-
Rudy Watts	153	7.6	40	330	16.5
Todd Smith	27	2.2	32	57	4.7

cont. on pg. 5

WE'RE FIGHTING FOR YOUR LIFE



Board of Regents

cont. from pg. 1

bonds to support the purchase of instructional and other equipment, and to use a portion of the institution's higher education resource fees for debt payment.

The committee is now drafting for consideration a

resolution that would request the Board of Regents to conduct a study on consolidation of schools and coordination of programs in terms of accessibility, quality and cost of higher education.

Education Majors Wanted

by Cindy Houston

What, exactly, is Kappa Delta Pi? This is a question commonly heard among students on campus. It is not a fraternity or sorority of any sort. Kappa Delta Pi is an organization that honors high academic scholarship in education majors. It is an honor society, not an "honorary" society; membership is not given or awarded, it must be earned through an individual's academic record and achievement.

Kappa Delta Pi Omicron has been at Glenville for many years. Annette Roberts is the third advisor of the society and is seeking education majors, with high achievement records, that would like to become

members. Though they search the computers for those students who show high GPA's and list them for bids, there are still quite a few that do not show up on the computer.

It is an honor to be in the organization and membership may be essential to the professional career and beneficial when it comes to resumes.

To be a member of Kappa Delta Pi Omicron, one must be an education major and have at least a 3.25 cumulative grade point average. If you are interested and eligible for membership, contact Annette Roberts at extension 292 for more information.

Festival Seeking Queen

Secretary of State Ken Hechler is requesting applications from anyone interested in being a Princess at the 46th annual West Virginia Strawberry Festival to be held in Buckhannon. *March 21* is the date of the first major event of the Festival—the date of the *Queen's Pageant* to be held in the auditorium of the Buckhannon-Upshur High School. At this pageant, the Queen will be chosen, along with four Maids of Honor. All other girls in the pageant will serve as Princesses to the Queen and her court at the *Strawberry Festival* to be held in Buckhannon on *May 27 thru May 31*.

Applications can be obtained by contacting the Secretary of State, State

Capitol, Charleston, West Virginia 25305, and must be submitted by February 20, 1987. Applicants should also include a brief letter indicating, "Why I would like to be a Princess at the West Virginia Strawberry Festival." "I plan to have an independent committee review the applications and recommend a choice," Hechler said.

Hechler stated that the West Virginia Strawberry Festival Association has advised him of the following qualifications:

1. Appointee must be 17 years old and under 25 years of age by February 1, 1988.
2. Appointee must never have been married.
3. Appointee should possess personal beauty and

social grace.

4. The Strawberry Festival Association requires a \$400 sponsorship fee, which must be paid by either the young lady, her parents, friends, a company, and/or a business. The fee is applied to the cost of production of the pageant as well as the cost of her room, board, coronation gown, and accessories for the Festival.

The young lady chosen as the Queen will make several appearances across the Mountain State during her year of reign. Also, she will receive many awards such as an all-expense paid trip to compete in the Miss West Virginia-USA Pageant and the West Virginia Association of Fairs and Festivals Pageant.

Curriculum Lab Open

The Division of Teacher Education extends a welcome to all students to visit the Curriculum Laboratory located in room 002 of Clark Hall.

The lab offers a wide range of educational materials including texts and workbooks for various grade levels in areas such as Health, Science, Social Studies, Math Reading and Language Arts. It also offers a myriad of teacher activity books, learning center and bulletin board ideas, educational games and much more. Come and see!

The Lab hours are as follows:

- Monday - 9:30-12/1-3
- Tuesday - 9-12/1-3
- Wednesday - 9:30-3
- Thursday - 9-12/1-3
- Friday - 10-12

If you have any questions please call extension 292 or contact Annette Roberts.

Anyone interested in taking English 314 (English Literature I) and English 316 (American Literature I) this summer session should see Dr. Como immediately.

The Office of Career Planning and Placement is sponsoring two teacher Interview Days this spring. The first will be on March 6 and the second one will be March 27. Interested students who have completed student teaching and plan to graduate in May or the summer of 1987 should see Janet Gainer in the Placement Office by February 6 to arrange interviews.

The next film scheduled for the Language Division Film Festival is *That Obscure Object of Desire*. Showtime is Feb. 10 at 7:30 in the Media Center.

GSC Seeks Funds for Hardwoods Project

Business and Education are forming partnerships across West Virginia in a cooperative effort to improve the economic climate. Dr. Duke Talbott of the Glenville State College Office of Community Services and Continuing Education is announcing application for funding of a joint West Virginia Lumber and Wood Products Exporting project. Application has been made under Title VI-B of the Higher Education Act.

Glenville State College is the lead applicant for this

project which is a collaborative effort by the WV Forestry Association, Governors' Office of Community and Industrial Development, International Trade Administration, Pittsburgh National Bank, Marshall University, WV University, and Glenville State College.

At the present time the supply of hardwoods to the industrialized nations, particularly Western Europe and Japan, is being cut back by third World producers who provide the bulk of the

supply, so that they can process their own hardwoods into furniture domestically. As a result, there is a vacuum in the international hardwood supply to Europe and Japan which do not produce sufficient quantities for their own use.

West Virginia has a number of hardwood producers which produce primarily for the domestic market. It is the objective of this project to combine the resources of businesses, higher education, and government to expand

export sales of West Virginia hardwoods.

The project has three basic components. They are:

Component 1-Basic research by West Virginia University to determine demand, market specifications, and production capacity for hardwood businesses to enter the export market.

Component 2-Curriculum development in the A.S. (Forestry) and B.S. (Business Administration) degrees at Glenville State College and the B.S. and M.S. degrees in

Forestry at West Virginia University reflecting the research results of Component 1.

Component 3-Outreach to hardwood businesses in the state making available the results of the research, publicizing the opportunities for exporting, and assisting businesses to enter the international market for hardwoods.

Dr. Talbott anticipates that awarding of funding for the project may be announced by May or June of 1987.

Campus Publicized by PR Office

Public Relations is the endeavor to establish positive relationships between a person, a business, or an institution and the public. Toward accomplishing that endeavor, many persons, businesses and institutions hire public relation professionals.

All West Virginia's sixteen colleges and universities hire public relations personnel. Some campuses hire several such persons who perform a variety of communications tasks. In fact, West Virginia University, COGS and the School of Osteopathic Medicine in Lewisburg call

these positions Directors of Communications.

Glenville State College hires a Public Relations Director. She is Mrs. Linda McKown. Mrs. McKown also carries the label of Alumni Affairs Director. For that reason, the PR/Alumni Office is located in the Alumni Center, a 1910 vintage house located diagonally across from Pickens Hall on the corner of Court and Linn Streets.

One of McKown's duties is to release all types of GSC news to the media. This takes the form of radio/TV news and advertising but most

regularly the newspaper article. Since the semester began on January 7, the Public Relations office has put more than 200 news releases in the mail to newspapers - dailies and weeklies all over the East - wherever students call home.

These releases cover December graduates, Dean's List, men and women basketball team members, Who's Who, student teachers as well as individual achievements and college data, such as enrollment figures, faculty information, and events. Whatever the achievement, a news release and photo, when possible,

are sent to the hometown newspaper.

In an effort to allow the entire campus to know who is doing what, the Pioneer Center Programming Board and the Public Relations office have begun displaying news releases, as they are printed, on the Bulletin Board at the top of the first flight of stairs to the Student Union.

The PR/Alumni office is open daily from 8:00 a.m. to 4:00 p.m. Everyone is cordially invited to visit the Alumni Center especially seniors who need to order or pay for commencement attire.

Agriculture Commissioner Gus R. Douglass has announced that the Department of Agriculture has an opening for a Chemist III in the Laboratory Services Section of the Quality Control Division at the Guthrie Agricultural Center.

The applicant must have graduated from an accredited four-year college or university with a major in chemistry. The salary will be \$16,000/year.

Applications may be obtained by calling the Commissioner's office at 348-2201 or by writing: Gus R. Douglass, Agriculture Commissioner, W. Va. Department of Agriculture, Capitol Building, Charleston, WV 25305; Attn. Chemist III, QC Division.

The deadline for applications is February 11, 1987.

Organizations

Tau Kappa Epsilon

At the February 2nd meeting of Tau Kappa Epsilon, four new associate members were initiated, as well as six others being discussed. Plans were finalized for this coming weekend's Alumni Banquet which is to be held in the ballroom on Saturday, February 7, 1987. Also, plans for the upcoming February 12th TKE Valentine's Sweetheart dance were completed. Prior to the dance chances will be given out, one per person, for a chance to win a free AM-FM walkman stereo. The winner must be present to win or another chance will be drawn. The chances also will be used as a \$1 dollar discount upon entry at the door. Other prizes are presently being considered. Last week the TKE basketball team fared well with a 1-1 record upping them to a 2-1 overall record. Associates are reminded that pledging has begun and to be prepared for the assigning of pledge tasks for this week and next week which includes the dance. On Feb. 27 the fraternity will be donating their time to the Braxton County Special Olympics department and would like the community to know that any service projects needed will be gladly undertaken if at all possible. Again associate members, good luck this semester and do a good job pups.

Phi Beta Lambda

Everyone is reminded that the deadline for entering the King of Hearts and Queen of Hearts Contest is February 6. The penny voting will be held during the week of Feb. 9-12 in the Pioneer Center Lobby. Prizes will be awarded and winners will be announced at the Valentine's Dance. Thursday Feb. 12.

We will be sponsoring an exhibit in honor of FBLA/PBL month from 10:30 - 1:30 in the Vandalia Room. All persons interested in learning more about Phi Beta Lambda are encouraged to attend.

Thank You Very Much,
Gina R. Moore
Reporter

Lambda Chi Alpha

The Beta-Beta chapter of Lambda Chi Alpha held their weekly meeting Sunday in the Wesley Foundation.

We would like to welcome back brother Joe Cogan, and thank brother Craig Worl for his generous contribution.

Four new officers were installed this week. They are

Ken Amos - treasurer, Terry Barr - Vice-President, Steve Hall - Social Director, Jeff Nowell - Associate Educator.

Awards for the week are KCUF - Bubby Dent and Aaron Woodhouse, POW - Rod Dingess, WINO - Aaron Woodhouse, AH - Darren Jackson.

Sigma Sigma Sigma

The Delta Alpha chapter of Sigma Sigma Sigma held an informal meeting on January 28, 1987 at 9:30 pm.

The awards presented this week: Cultured Pearl - Patty Tice and Charlene Cole for seeing the Wizard; Sis of the Week - Patty Tice and all nerds; Sigma Sweetheart - Rushees, Lisa Miller, and Rob Massie.

For Rent: Furnished 2 bedroom luxury apartment. Spotlessly clean. Quiet. Complete privacy. Air conditioned. New furniture. Beautiful grounds. Parking. Rent \$260. Save money with a roommate. Bungalow Village, Glenville, 462-7796.

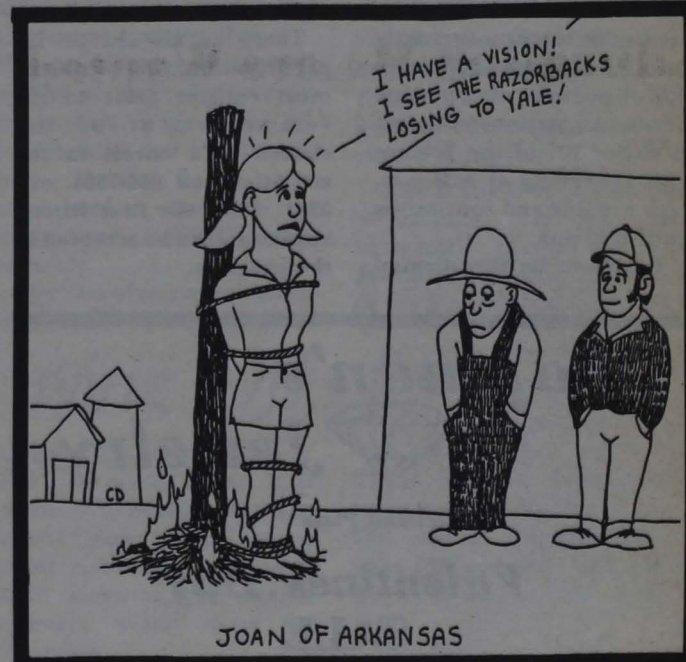
SPRING BREAK VACATION

Ft. Lauderdale, Florida. Starting at \$169.00, 7 nights quad accomodation, transportation packages available.

STUDENTS AGENTS WELCOME

For information call 1-800-222-4139.

02/18/87



BETTER GROCERIES at PIONEER'S GROCERY

EAST MAIN STREET GLENVILLE

9 a.m.-9 p.m.
Monday thru Saturday
10:30 a.m.-7:00 p.m. Sunday

SPECIALS THURSDAY thru WEDNESDAYS

A representative for Columbia Gas will be on campus February 10 to interview prospective business administration graduates in the fields of computer science and accounting. Students who do not have a major in computer science but who will have at

least 15 hours in the area at graduation may also interview. A 3.0 GPA is required of all candidates.

Interested students should contact Janet Gainer in the Placement Office before February 3 to arrange an interview.

Children's Science Activities Planned

Science activities for 3rd and 4th grade children will be conducted on the Glenville State College campus each Tuesday evening commencing February 10 and continuing through April 21, with the exception of March 17. The activities will be directed by preservice teachers currently enrolled in Science 321 under the direction of Dr. Joe Evans. All sessions will meet in Room 107 of the Science Hall convening at 6:30 p.m. each evening and continuing until 8:30 p.m.

Topics to be investigated

include: Effects of Heat on Expansion, Gravity, Paths of Light, and Practical Application of Magnetism. All lessons will utilize an activity-based approach to teaching; thus, the children will be involved both physically and mentally in the investigation of each topic.

There is no charge for participation, but children must register prior to the commencement of the classes. To enroll in the activities, call 462-7361, ext. 235. Only the first fifteen applicants can be accepted in the program.

Continuing Ed. Classes Outlined

The Glenville State College Office of Continuing Education is offering several classes that commence the second week of February.

Two sessions of an adult Pottery class will be instructed by Charles Scott in the basement of the Firestone Lodge for five Mondays each. The first session will be held from February 2 through March 2. The second session will be held from March 23 through April 20. Each session will run from 6:30-8:30. Participants will explore contemporary and traditional methods of pinch, coil, slab, and wheel construction. Appropriate glazing and firing techniques will be considered.

An American Red Cross Babysitting class will be offered on Wednesday evenings, February 4 through March 11 from 6:30-8:30 p.m. in the Science Building, Room 200. The class will be instructed by Arlene Briski and participants must be at least 11 years old.

Tammy Stalnaker will offer two Creative Learning classes this semester. The focus of the first class will make children aware of the importance of a healthy body. Exercise and diet, including preparing some recipes, will be discussed. The class will meet on Thursday evenings, February 5-26, from 6:30-8:00 p.m., in the Small Ballroom of the Pioneer Center. The second class will focus on expression through drama. Mime and other dramatic interpretations will be used to assist children in developing poise and self-confidence. This class will meet on the Stage in the Administration Building on Thursday evenings, March 5 through April 30 from 6:30-8:00 p.m. These classes will be geared for children ages 4-9.

Organic Gardening From the Ground Up will be offered on five Tuesday evenings, February 10 through March 10, from 7:00-8:00 p.m. The class will meet with instructor, Teresa Wayman, in the Science Building, Room 205. Participants will be instructed in natural gardening practices with emphasis on building healthy soil and starting your own vegetable and herb seedlings. Students will be encouraged to share their ideas on why they garden or want to garden, what they want to grow, and how much time they wish to devote to gardening. Teresa writes a weekly column for the Glenville Democrat entitled, "The Kitchen Garden - Growing, Preserving, and Preparing Food for the Table."

Swim Aerobics will be instructed by Terry Mullooly on nine Wednesday evenings, February 11 through April 15 from 5:30-7:00 p.m. at the college pool. This is a class for novice swimmers. Minimal water skills required are being able to hold breath for ten seconds under water and being able to float on face and back.

Class instructions include water preparation skills, water exercises, swimming stroke improvement, and increasing physical endurance by swimming laps.

Ballroom Dancing will be taught on five Wednesday evenings, February 11 through March 11 from 6:30-8:00 p.m. in the Ballroom of the Pioneer Center. Mary Ann Yeager will provide instruction in Fox Trot, Waltz, Swing (Jitter-bug), Cha Cha, Mambo, Samba, Rhumba, and Tango. Ms. Yeager was formerly with the Arthur Murray Dance Studios and the Frances Nestor School of the Dance.

An Introduction to Computers for Adults will be held on five Thursday evenings, February 12 through March 12 from 6:30-8:00 p.m. in the Science Building, Room 107. Adults participating in the program will be instructed on Apple IIe microcomputers. Joe Evans will be the instructor for the class. Participants will learn how to place these units in an operational mode and to execute operation commands. Proficiency in using the microcomputer as a word processor will be developed; various software programs will be introduced as time permits.

An Introduction to Computers for Children (ages 8-12) will be held on Thursday evenings, February 12 through March 12 from 6:00 - 7:30 p.m. in the Science Building, Room 107. Kevin Evans will be the instructor for this class. The children participating will be instructed on Apple IIe microcomputers. They will learn how to place these units in an operational mode and to execute operation commands. BASIC programming will be taught; graphics will be introduced as time permits.

Care and Maintenance of House Plants for adults on Tuesday evenings, February 24 through March 10, from 6:30-8:30. Participants should meet with instructor, Gary Snyder, in the Science Building Room 200. Procedures for proper care of various types of house plants will be discussed, including: proper watering, fertilization, lighting and pest control. Each participant will be asked to bring a problem house plant to class during each meeting. Problems with each of these plants will be diagnosed and procedures for correcting problems will be implemented.

For more information and pre-registration, please call the Office of Continuing Education at 462-7361, ext. 235. To ensure your place in the class, call one week prior to the commencement of the class. Each program has a minimum and maximum enrollment requirement. A fee will be charged for these classes.

Chapman's Jewelry

Foodland Plaza

Valentines' Day
SALE
February 1-6

Hours: Mon.-Fri. 10 a.m.-6 p.m.
Hours: Saturday 10 a.m.-5 p.m.

Towne Bookstore & Video Club

FREE Lifetime Membership
NEW MOVIES

Back to School

Out of Bounds	Cobra
Police Academy III	Wildcats
A Fine Mess	Howard the Duck
Runaway Train	Murphy's Law
Cassettes & Compact Discs	Valentines
1987 Calendars & Datebooks	

Now Open Gil-Co Pharmacy

32 E. Main St., Glenville

Phone: 462-8300

Hours: Mon.-Fri. 8:30-5:30 p.m.
Saturday 8:30-2:00 p.m.