

THE GLENVILLE MERCURY

Volume 60 Number 22²³

Glenville State College

Wednesday, March 15, 1989

Pioneer to be Nominated

The G.S.C. Student Congress is receiving nominations for Pioneer and for G.S.C. Advisory Board Representative until Friday, April 14th at 4:00 p.m. in The Office of Student Services. Elections will be held on Monday and Tuesday, April 24th and 25th.

You should know that the Pioneer is honored for his services with the presentation of a brand new Hawken 45 cal. Muzzell Loader Rifle as well as a genuine Coon Skin Cap and Mountain Man Moccasins. In addition to this, expenses are paid to attend the WVIAC Basketball Tournament.

All dry cleaning expenses are paid for by Student Congress. All of this adds up to over \$700.00 of valuable benefits. So, if you have "The Spirit" of a Pioneer and wish to have the distinction of representing GSC's competitive spirit while working closely with

our cheerleading staff, then stop by The Student Services Office before April 14th and place your name in contention. In the event no seniors (for fall 1989) declare themselves, juniors by fall 1989 will be permitted to be nominated by Friday, April 21st deadline (12 noon).

Also, we need persons to declare themselves for the leadership position of Student Representative to the GSC Advisory Board. You will represent students at important college planning sessions four or five times during the college year. This body provides guidance to direction of our college program and policy. Meetings are usually preceded by a good dinner with business to follow. Place your name in nomination by the Friday, April 14th deadline in The Student Services Office.

Mentalist to Appear

There is a mentalist to attend Glenville State College. Craig Karges will appear on the campus on March 30th at 8:00 pm in the Pioneer Center Ballroom. Admission is free so all students can attend. At 5:00 pm Craig will appear in the cafeteria for a preview of

what will be seen.

Mr. Karges has appeared on television's "PM Magazine." He has also been seen on the Nashville Network's "Nashville Now" television program. P.B.S. is another station Craig has been viewed on.



First row: Coach Dr. Russell Shepherd, Rhonda Felder (no longer active), Kim Creel, Karen Holloway, Kim Fox, Niki Randolph, Mary Jo Ellyson, Assistant Coach Tina Cunningham; Back row: Trainer Kim Hull, Monique Johnson, Annette Caldwell, Wendy Holcomb (no longer active), Tammy Pence, Marcia Moore, Tami Simons, Tina Bullard (no longer active), Michelle Pursley (no longer active), Trainer Missy Funkhouser.

LADY PIONEERS TO NATIONALS

by John Buser

For the first time in the history of GSC, the Lady Pioneer basketball team has advanced to the NAIA National Tournament! Glenville moved into the 16 team field by virtue of a 100-98 win over St. Vincent in a bi-district playoff game on Wednesday (March 8).

Following their playoff victory over WV Tech on Monday (March 6), the Lady Pioneers moved on to Latrobe, Pennsylvania, to face St. Vincent on the Bearcats' home court.

Glenville, which shot nearly 70% from the floor in the first half, sprinted to an early lead and late in the period extended their advantage to a 22 point bulge.

However, St. Vincent held Coach Shepherd's club scoreless over the final three minutes of the first half to trim the deficit to ten (57-47) at the intermission.

The Bearcats continued to

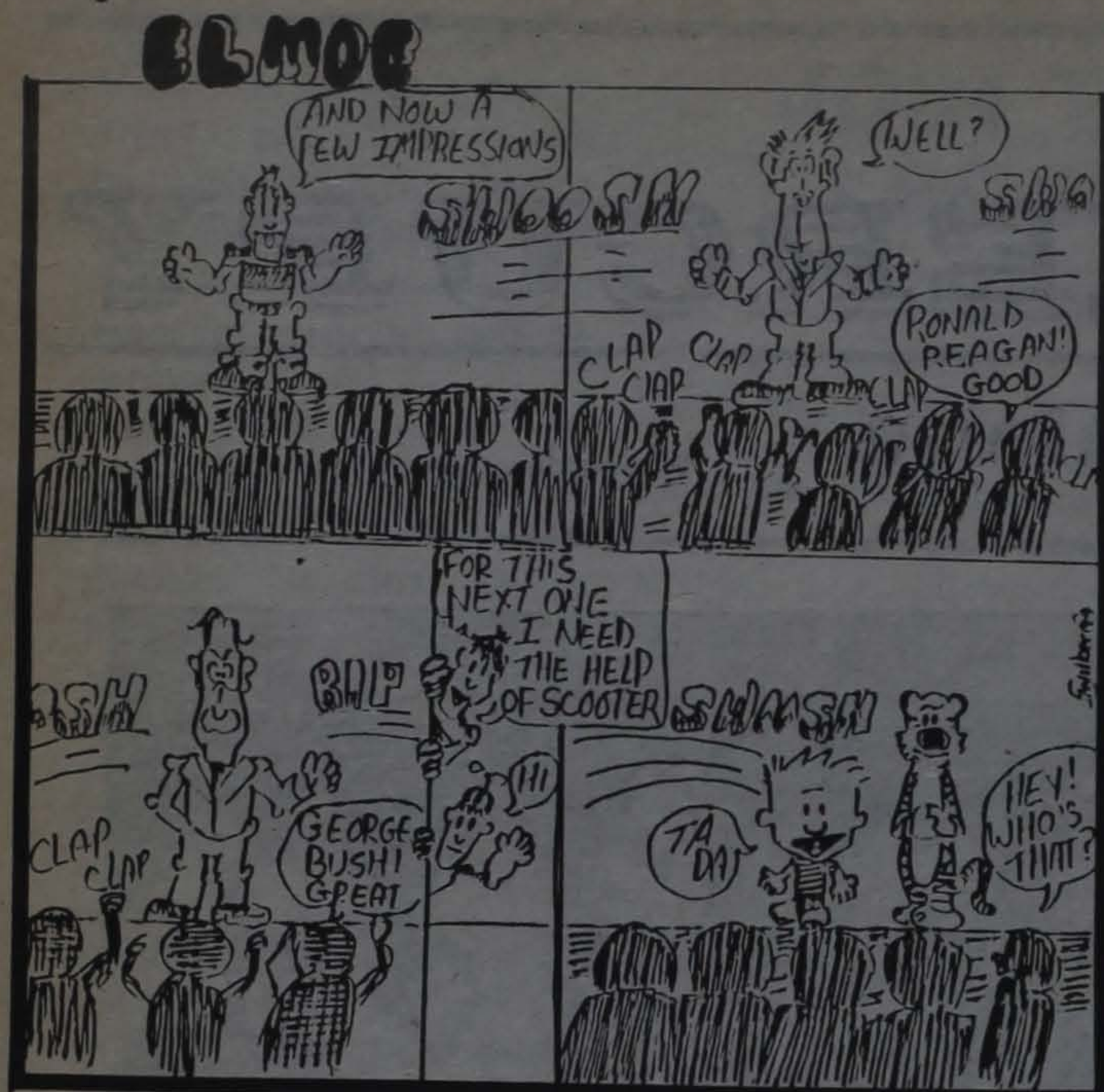
play aggressive defense in the second half, especially concentrating on GSC forward Tammy Pence, who exploded for 23 first half points. Consequently, the other Lady Pioneers were left open to exploit the defense, proving that the blue and white had several other offensive weapons.

Despite their phenomenal field goal percentage (64% for the game) and team chemistry, GSC, which never trailed in the game, found itself in a heart stopper as they owned a slim 98-95 lead. With 15 seconds left in the game, Niki Randolph was fouled and sent to the line. The senior point guard nailed both ends of the one-and-one for a 100-95 Glenville lead. St. Vincent hit a three point goal at the end, but it was academic as the Lady Pioneers had defeated the Bearcats 100-98 for the bi-district championship.

Leading a balanced attack for the winners was Tammy Pence who poured in 30 points and grabbed 10 rebounds. Monique Johnson added 25 points, 9 boards, and 8 assists. Niki Randolph chipped in with 22 markers and 8 assists, while Kim Creel netted 16.

With the win, GSC will take its 19-6 record to Kansas City to battle number one seeded Claflin, South Carolina in the first round of the NAIA National Tournament. Game time for the clash with the 32-0 Pantherettes is set for 10:45 am on Thursday (March 16) at Municipal Auditorium.

The Mercury Staff would like to wish everyone a safe and joyous Spring Break. Remember there are only 6 weeks of school left after break.



ORGANIZATIONAL NEWS

Chi Beta Phi

Chi Beta Phi held a meeting March 7 to select its Panhellenic Outstanding Woman. This Year's representative will be Vickie Fuls, president of Chi Beta Phi. Vickie is an education major studying math 5/8-9/12 and science 5/8-9-12. Congrats, Vickie!

Chi Beta Phi also planned its upcoming "Spring Photo Session." To be held Thursday, March 30, 1989. Photographer Kenny Gump will be on campus from 2-6 p.m. in the Verona Maple Rm. Remember, as before, these pictures cannot be used for the yearbook!

You can choose from three photo packages: A. 1-8x10, 2-5x7, 16-wallets...\$12, B. 2-8x10, 2-5x7, 16-wallets...\$14, C. 3-8x10, 2-5x7, 24-wallets...\$18, Individual orders are available.

Children, groups (up to 10 people), families, couples, friends... Welcomed!! No appointments necessary. For additional information call Dr. Disko, 462-7361, ext. 236.

Delta Zeta

The Theta Xi Chapter of the Delta Zeta Sorority held their weekly formal meeting Monday March 6th, 1989 at 9:30 p.m.

Our salad luncheon is this week, March 15 & 16 from 11 - 1. Everyone come and enjoy. Also our food drive is March 15, 16, and 17. Don't forget Girls!!!

We would like to congratulate and wish Good Luck to the Lady Pioneers Basketball Team!!!

We would like to congratulate our new initiates, you finally made it!!! Thanks to all those who helped with the clean up of the house after the flood!!! We

really appreciated it!!!

Happy Birthday Carla!!!

We Love You!!!!

Keep Smiling Paula, remember we all Love You!!!!

Also, Pig Pen went to Rhonda and Clean Room went to Teresa!!!

Study Turtle went to Lorie B. and Wilted Rose went to Lisa W.!! Way to Go Lisa!!!

PICAS

Our next meeting is March 16, at 12:30 p.m. in the Pioneer Center Vandalia Room.

Bring a friend and your lunch!!!

Sigma Sigma Sigma

The Delta Alpha chapter of Sigma Sigma Sigma Sorority held its meeting March 12, 1989 at 9:30 pm in 209 Williams. Awards were given as follows:

BOW-Gini, Susan

PJOW-everyone

Sigma Sweetheart-Richard Settle, Mike Mathes, Dean Brannon, Scott Fluharty, Kevin Davison, Kevin Sears, Mike Miller, Ronny, and Eugene.

Study Bunny-Michelle, Annette

Cultured Pearle-Patty, Vicki, Charlene, Susan, Becky.

SOT-Rita, Paula, Michelle, Jill, Becky.

Good Luck to the Lady Pioneers in Kansas City! Go Pioneers!! We hope everyone did well on their mid-terms. May everyone have a safe and happy Spring Break!

LETTER TO THE EDITOR

I wish to express my appreciation to everyone who has supported me and the Wesley Foundation over the years. It is such a pleasure to work with such cooperative and interested persons. You have made my job a lot easier and certainly more enjoyable. The recent evaluation team was quite impressed with the wide support for the Wesley Foundation from the students, staff, faculty, and the administration of Glenville State College and also from the community at large.

A special Thank You goes to those who participated in the recent evaluations through your attendance, your input, and your prayers. Because of you the evaluations went extremely well.

Our task is far from over. There is still a need for ministry. Therefore, there is still a need for volunteers, for participation in programming activities, and services, and also for your continued prayers.

Sincerely,
Karen J. Frank
Campus Pastor

TKE

Pledges that have signed for the spring semester are Trent Craft, Ketan Patil, Brian M. Smedley, and Loran E. Twyman.

A fund raiser selling a GSC hooded sweatshirt will be raffled off Monday

March 20 at 9:00 p.m. in Pickens Hall lounge. On Wednesday March 22 at 6:00 p.m. a pool tournament will be held in the game room in the Pioneer Center.

Meetings have been changed to Tuesday at 8:30 p.m. All fraters are reminded letters day is on Tuesday and Thursday is dress-up day.

This Thursday will mark the beginning of the NCAA Tournament and several excellent teams appear to have a shot at the title. Do you have any idea who will win it? Give us your guess of who will meet in the championship contest and the final score. If you are correct, you will win \$10. In case of a tie, the closest pick to the total number of points scored by both championship teams will win. Deadline for the contest is this Friday, March 17. Contestants may leave their picks at the Mercury, or simply give their choice to John Buser.

From the Editor's Desk

Glenville had two firsts this past week. The Lady Pioneers won the regional tournaments and will go to the Nationals in Kansas City. I am not much of a basketball fan, but I felt that they should receive some recognition for this. Congratulations Lady Pioneers and Good Luck!

Next week starts Spring Break, so let's enjoy ourselves and return safe. I'm sure that everyone is ready for it, I know I am. Of course I have

a lot to do over break, so it won't exactly be a vacation, but I may get rested up some.

I haven't had much time to keep up with the news this week and have only heard bits and pieces on the implementation of the Carnegie Report and I'm not sure that things will be good for GSC. We will just have to wait and see.

Editor,
Bill Church

The 1989 Spring Trillium will be available in the month of April. This year's edition will have 80 pages of short fiction stories and poems.

Editor for the Trillium is Jon Townsend, Associate Editor Mark Romano and Assistant Editors are Jesse Chapman, Traci M. Probst and Sally Smith.

Melody Sheets is the high school scholarship winner from Greenbrier East High School. College students with stories in the Spring Trillium are Becky Baldwin, Bernice Blake, Clara M. Brown, Cheryl Depue, Holly Ekstrom, Alex Johnson, Jesse Chapman, Traci Probst, Sally Smith, Sharon Smith, Jon Townsend, Charles D. Vest, and Charlotte Whipkey.



THE
GLENVILLE
MERCURY

Editor-in-Chief	Bill Church
Associate Editor	Janet Rogers
Copy Editor	Lynne Jeffrey
Sports Editor	John Buser
Typesetters	Monica Hanks
	Patti Kuhl
	Amy Nichols
Advertising Manager	Michelle Rhodes
Photographic Editor	Kris Rogers
Photographers	Paul Biser
	Andy Stotts
Cartoonist	Jody Wilber
Circulation Manager	Marilouise McNemar
Reporters	Paul Biser
	Donna Brady, Chris Harper, Barbara Harris,
	Alicia Hess, Tena Rogers, Sally Robinson, Mark
	Romano, Sally Smith, Carmen Wager, Karen
	Frank, Katsuko Nakata, and Marilouise
	McNemar
Advisor	Yvonne H. King

THE GLENVILLE MERCURY is published weekly during the school year for \$5 per year by Glenville State College, 200 High Street, Glenville WV 26351. Second class postage paid at Glenville, WV. POSTMASTER: Send address changes to THE GLENVILLE MERCURY, Box 161, Glenville State College, Glenville, WV 26351.

Student Congress Installation Banquet Held

by Marilouise McNemar

The new 1989-90 Student Congress Officers, Class Representatives, and Senators-At-Large were honored during an Installation Banquet on March 8th, at 5:00 p.m. in the Pioneer Center Verona Maple Room.

The program began with Heidi Christopher, 1988-89 President welcoming the new and past members of Student Congress and their guests for attending. This year Student Congress has supplied gifts for members and guest with portfolios.

Dr. A. T. Billips, Student Congress Advisor gave the invocation before the meal. The menu consisted of steak, breaded shrimp, broccoli with cheese sauce, baked potatoes, corn, salad, hot rolls, coffee, ice tea, and coke. After the dinner, the members and guest had an opportunity to make their own sundaes.

After the dinner, Heidi Christopher then gave a recognition of guest who attended. She then thanked Dr. Billips for attending upon President Peterson's behalf. Heidi gave thanks to the 1988-89 Student Congress for their appreciation during her reign as president and welcomed the new members. Heidi then presented Michelle Garrison a plaque that shows her appreciation for her presidential reign in 1988-89. Michelle expressed her gratitude and thanked the members for the plaque. Dr. Billips turned around and presented Heidi with a plaque of appreciation due to the fact that Heidi had also reign as president during the same year when Michelle Garrison graduated in December.

Michelle Garrison had the opportunity to give a special recognition to the past members of Student Congress, and stated that what you get back is what you put in to it.

Dr. Billips then gave the installation

of oath to the 1989-90 Student Congress Officers. Those who received the oath were: President - Crystal Kitzmiller, Vice-President - Mike Miller, Secretary Tracy Chapman, Treasurer - Brenda Simmons.

Next the presentation of the oath was given to the Class Representatives and Senators-At-Large. They were: Senior - Michelle Riley, Junior - Robert Blake, Sophomore - Sandra Kell, Cheryl Amos, Robin Dodrill, Paula Rexroad, Sharon Rose, and Gordon Stevens.

The passing of the gavel and keys from old officers to the new officers took place in an unusual way (informal). The passing of the keys went from treasurers, Doug Jackson and Brenda Simmons; from the secretaries, Rhonda Simmons and Tracy Chapman; from the Vice-Presidents, Crystal Kitzmiller and Mike Miller; and from the Presidents, Heidi Christopher and Crystal Kitzmiller.

Crystal Kitzmiller congratulated the new officers and commented on her reign as Secretary and Vice-President. She then gave a special thanks to Dr. Billips, Heidi Christopher and Michelle Garrison for the support she received during the year.

Heidi Christopher commented on the projects and issues that Student Congress has been involved in during 1988-89. These activities during orientation week, GSC Board of Advisors, movie festivals, West Virginia Board of Regents- Advisory Council for students, mixes and dances served with refreshments, Student Administrative Forum-Increased Costs Vigil, GSC Week, big screen and satellite maintenance, represented the student body at West Virginia Student Personnel Administrators Organization, sponsored GSC Pioneer, AIDS Awareness Week, Alcohol Awareness Week, Date Rape Video Conference, Lunch Bunch, Spirit Caps, Student Voter Registration, and Commuter Microwave Oven. Then Heidi gave her thanks again and said "What you get back here at Glenville State College is basically what you put in to it."

"Lion in Winter" Performed

by Minnie McNemar

Sigmund Freud held a three-day party in the GSC auditorium on March 8, 9, and 10. Freudian theories ran rampant across the stage as the members of the cast spoke their lines.

This Christmas episode brought the royal family of Henry II (James Cooper) and Eleanor of Aquitaine (Tracy Samples) down to earth, showing that any family, anywhere, anytime, has many of the same Freudian conflicts in its internal structure.

The elder child Richard (Allen Laugh) syndrome was well done. Tradition states the first son should inherit the royal mantle, but traditionally and psychologically each child strives to become the most powerful through being the best loved child.

Geoffrey (Dana Spade) and Cabot (Lesa Hendershot) played the

role of middle child and Ward of the Court (adopted daughters) most aptly.

John (Kevin Ranson) stumbled, bumbled and was pushed about the stage by all of the others, giving believability to pecking order endured by the youngest child.

Richard's character (Allen Laugh) was most believable. This young man, Richard, strove for power against the many forces but he too sought the love of his parents.

The roles of the aging King Henry II (James Cooper) and Eleanor of Aquitaine (Tracy Samples) were played with distinction. Eleanor and Henry were questions whose answers which remained concealed even to the last syllable spoken.

This dramatization was comical, suspenseful and had many moments of self identification for the viewer.

MINNER RECORDS

Shades of the Mighty Clouds of Joy, The Swan Singers, and The Pilgrim Travelers! On the campus of old maple-covered Glenville State we have our own gospel singer, Greg Minner. Very early in his career the versatile senior from Rockport, West Virginia has produced a surprisingly strong gospel album that may well appeal to rock fans, Ready or Not (Sweet-song SW LPS 006 \$5.95) recorded at the Music Factory.

Songs on side one are "I want to Be Ready," the title song "Ready or Not," "Yeshua Ha Mashiach," "I Will Follow Jesus," and "The Day He wore My Crown." On side two are "Together," "In the Name of the Lord," "He Chose Me," and "Amazing Grace." Except for "Amazing Grace" all the songs are originals written by a lady called Janae. The group consists of Duane Flesher on keyboards, Harold Stockwell, guitar; Jerry Sexton on bass, Margaret Sexton on drums. Don Staats is the producer.

Although Minner's pleasing voice and phrasing has not reached its full maturity it is akin that of Canadian Gordon Lightfoot and Elvis Presley. Invoking the King may well make you skeptical (until you hear Minner, Especially on the first side). Side one is particularly

Con't. on pg. 6



Fine Arts Building Takes Shape

The new Fine Arts Building is beginning to take form as the steel structure is being assembled. The steel work is 50 percent complete. Brick and block walls have begun to rise to help support the steel. The block laying is the next major project to work on after all of the steel is in place. Three weeks ago electrical and piping work was started.

Now that Spring is here and the weather has started to break the building should progress at a faster rate. During the winter much time was lost due to snow, rain, and cold weather.

The building is scheduled to be completed in January of 1990 even after the delays that have been encountered.

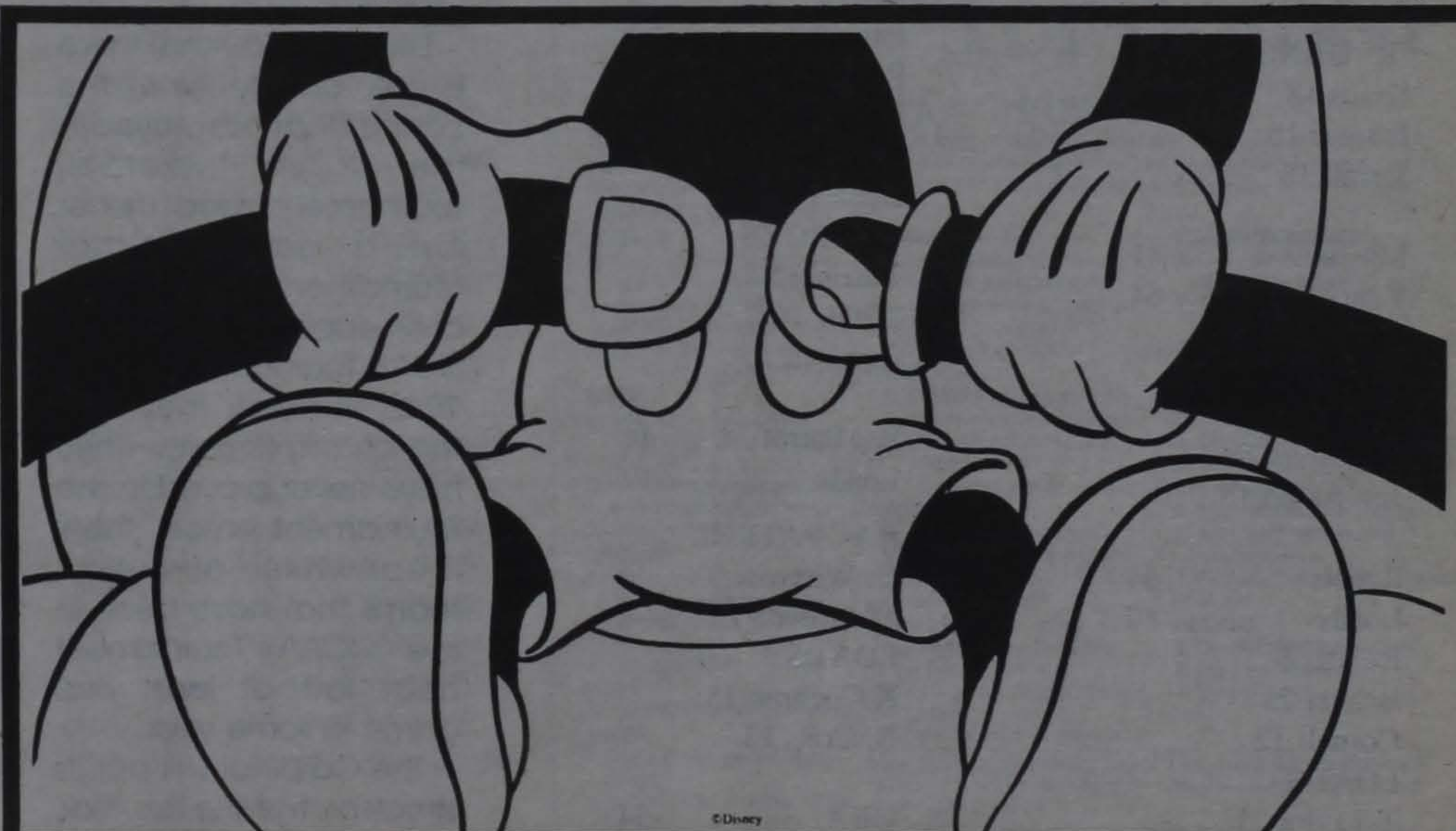
Residence Halls Close

The residence halls will be closed on Friday, March 17, 1989 at 5:00 p.m. and will reopen on Monday, March 27, 1989 at 12:00 noon. Lunch (noon meal) will be the last meal served on Friday, March 17, 1989. Dinner

(evening meal) will be the first meal served on Monday, March 27, 1989. Classes begin on Tuesday, March 28th.

CHECK-OUT PROCEDURE
Before you leave the

Con't. on pg. 6



Buckle Up For Spring Break '89

Sports

Golfers get into Swing

by John Buser

After finishing second in the conference last year, Glenville's golf team opened their spring season on Friday and Saturday (March 10-11) when they participated in the James Madison Invitational. The 36 hole event was played at Luray Caverns and featured 19 different colleges and universities, including several Division I schools.

Following Friday's 18 holes of play, Glenville found itself in a tie for eighth place with Hampton Sydney (319). Transfer Greg Tallman led the Pioneer linksters by firing a 76, while junior Bob Sowards posted a 78.

Once again on Saturday, Sowards and Tallman turned in impressive performances. Sowards, a former All-American, carded a one over par 73, the lowest round in the field for the day. Tallman continued his consistent play in his initial tournament for Glenville, by shooting a 77.

Despite the efforts of Sowards (151) and Tallman (153), who captured 5th and 8th place individual finishes, respectively, the Pioneers slipped after Saturday's round to finish twelfth. Penn

State claimed the team title, followed by Greensboro, JMU, and Liberty. Other WVC schools in the tournament included Charleston (5th) and Fairmont (7th). Although both squads edged GSC this time, Coach Carney's team will have several more chances for revenge as these teams will meet at many future tournaments this year.

Before the upcoming tournaments over spring break, (Elon College Inv. and the Marietta Inv.) Coach Carney has the difficult task of selecting five players from his talented group to make the trip. Although Sowards and Tallman are assured of spot on the top five, the remaining positions are unsettled. Andy Batten (170), Ben Moore (172) and Jason Sutton (178) all made the journey to the JMU Invitational, but they are being pushed by Pat Pence, Scott Wymer, John Buser, and John Pack. The five who do make the traveling squad for the spring break events will certainly have to play well in order to compete with the southern schools who have been able to spend much more time on the course, thanks to warmer temperatures.

Buser's Briefs

Now that the pairings for the 51st NCAA Basketball Tournament have been announced, it is time to predict who will win it all in 1989. Sure the number one and two seeded teams in each region look very strong, but the remaining 56 squads enter the event optimistic, ready to show their stuff.

What do I think about the upcoming tournament? I think WVU, 2-6 in their last 8 first round NCAA Tournament games, will nip Tennessee, because of the extra lay-off they enjoyed due to their upset loss in the Atlantic 10 Tourney. If the Mountaineers do defeat the Volunteers, they will meet Duke in all likelihood. The Blue Devils will win by 15 points or more, I am afraid.

In addition to my WVU predictions, I think Texas and Evansville will surprise some people and advance to the "sweet 16." One final prediction - Georgetown, oh yes the Hoyas, will become college basketball's champions on Monday, April 3, when they defeat Louisville.

Did you know that there is only one team in the country that has played in the NCAA Basketball Tournament and never lost a game in that tournament? Stanford's only appearance in the NCAA Tournament was in 1942, the year they won the championship. They have never played in the tournament since then, meanwhile all other teams that have been in the NCAA Tournament have lost at least one game in some year.

The Cardinal will put its streak on the line this year, however as they have been invited to the tournament as the number three seeded team in the East region,

The ImageIndex[®] For Men

Test Your Potential for Getting Ahead.

The following test is based on the probability of making the best first impression on the greatest number of people in business and professional situations. To take the test, simply circle the number opposite the entry that best describes you. Then, total up your score according to the directions below, and gauge your Image Index.

SHIRTS

1. Long-sleeved, all-cotton, white, striped or pastel.
2. Button-down oxford, any color.
3. Short-sleeved, or anything that is wash and wear.

TIES

1. All silk with a subtle pattern or stripe.
2. Knit ties.
3. Clip-ons.

SUITS

1. Traditional single-breasted, navy or grey pinstriped, expertly tailored and well-pressed.
2. Designer double-breasted, with bold patterns or weave, molded to body.
3. Prefer sports jacket and slacks.

SHOES

1. Classic dress shoes that tie, always freshly shined.
2. Usually casual, rarely shined.
3. Don't think about shining shoes.

SOCKS

1. Mid or over-the-calf, brown, navy or black.
2. Mid or over-the-calf, textured or patterned.
3. Ankle length, dress or casual.

FACE

1. Always clean-shaven.
2. Have a well-groomed mustache or beard.
3. Not always clean-shaven.

HAIR

1. Regularly cut in a conservative style.
2. Sometimes need a haircut.
3. Always worn in the latest avant-garde style.

NAILS

1. Groom at least once a week.
2. Clip and clean nails occasionally.
3. Bite regularly.

JEWELRY

1. Classic style watch, leather or metal band.
2. Wear a sporty watch.
3. Don't usually wear a watch.

HANDSHAKE

1. Firm with both men and women.
2. Firm with men and limp with women.
3. Squeeze hard to show superiority.

EYE CONTACT

1. Make frequent eye contact.
2. Not comfortable looking at someone often.
3. Normally look around the room or at feet.

POSTURE

1. Usually stand and sit erectly.
2. Don't pay much attention.
3. Tend to slouch.

How to Score Your Image Index: Give yourself 6 points for every #1 answer, 3 points for every #2 answer and 0 points for every #3 answer. If your total score is:

54-72

Congratulations, you're on your way.

36-53

You're on the right track, but have some work to do.

18-35

Careful, you may be sabotaging your chances of getting ahead. There's still hope, though.

0-17

You've got a real problem. Without immediate action, your chances of making a good first impression are virtually nil.

The Image Index was developed in conjunction with Kaufman Professional Image Consultants of Philadelphia. © 1988, KWI Brands USA. All Rights Reserved.

Intramural Boxscores

Tarheels 93
"R'Gang 56

TARHEELS

Heavy D 23

Sky Jr 18

Twyman 14

General 10

Reg 14

"R" GANG

Kraus 18

Farmer 15

Jarrell 16

Muslims 41

Yahoos 64

MUSLUMS

Ferris 14

YAHOO'S

Brad Furr 21

Jim Aman 13

Rebels 54

Loads 42

REBELS

Beaver 22

Cornell 12

LOADS

T Taylor 21

K Cochran 10

Rat Patrol 51

TeKE's 44

RAT PATROL

Schaad 14

Miller 12

TeKE's

T. Furr 15

M.King 13

Rebels 72

Fat Boys 63

REBELS

Beaver 28

Jones 13

Dean 11

FAT BOYS

Tustin 22

Miller 16

Franklin 15

Rat Patrol 44

Loads 42

RAT PATROL

G. Withrow 9

M.Miller 9

LOADS

K.Cochran 15

B. Criss 13

UBA 54

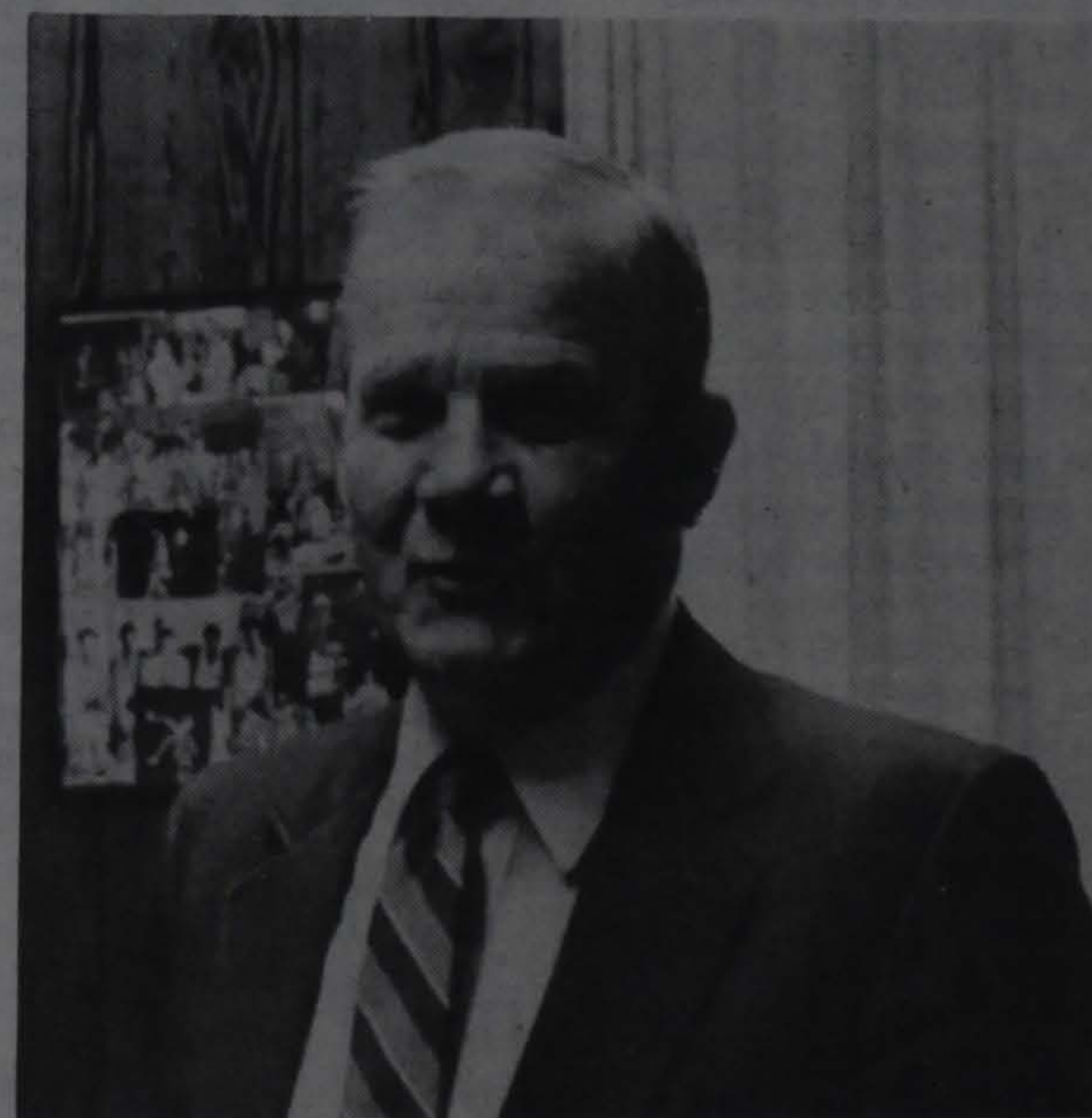
Supreme Court 39

UBA

M. Lyle 26

SUPREME COURT

J. Sutton 16



Jesse Lilly

Lilly Honored

The Glenville State College End Zone Club and Alumni Association is sponsoring a retirement dinner/roast for retired athletic director/coach Jesse Lilly on Saturday, April 1 at 6:30 p.m. in the Pioneer Center Ballroom. Everyone is welcome. Reception at 5:30

p.m. Dinner at 6:30 p.m.

Ticket reservations are available at the GSC Alumni Center. Telephone 462-7361 ext. 122 and 123. Dinner is by reservation only.

Lilly will be roasted by former coaches and friends after dinner.

wanted, but they advised against English. They were both teachers and did not want her to have to grade all the papers. She admitted that they were probably right, and knew her very well, because that is the one aspect of teaching she does not like to do.

Con't. from pg. 3

alive and spirited (no pun intended). The other side is adequate but falters in comparison. On the basis of side one, however, it would not be surprising if Minner carved out a niche in the gospel music field.

CLASSIFIED ADS

CLASSIFIED ADS are available for 85¢ for 15 words.

Send check to:
Advertising Manager
c/o Mercury.

ADOPTION: Happy, healthy adopted two-year-old seeks baby brother/sister to share two warm, loving parents. Call Toni and Gary collect; (703) 765-4594, or write us; P.O. Box 7364, Alexandria, VA 22307.

Looking for a student organization, that would like to make between \$500-\$1000 for a one week on-campus marketing project. Must be organized and hard working. Call Kevin or Myra 1-800-592-2121.

Applications are now being accepted for lifeguard positions at Cedar Creek State Park. Approved Red Cross Senior Lifeguard Certificate required. Please contact the park superintendent in person for application.

GLENVILLE DRY CLEANING AND ALTERATIONS

Men's Suits 20% off
Slacks and Trousers 10% off

Open Sat. 9:00-12:00
Located in Alley by
T&L Hot Dogs

Health Program No Longer Sponsored at GSC

Effective May 12, 1989, Glenville State College will no longer sponsor, support, or promote a particular health plan or policy. We suggest that students wishing to obtain medical insurance coverage get in touch with an agent in Glenville or their home town and make their own personal arrangements.

The Office of Civil Rights, U.S. Department of Education has begun to enforce Title IX by insisting that all colleges and universities not participate in identifying an insurance plan that treats pregnancy, childbirth, false pregnancy, spontaneous termination of pregnancy and recovery therefrom differently than any other temporary disability.

Since Glenville State College is not in the student health insurance business, and wishes not to be used between The Office of Civil Rights, U.S. Department of Education

and The Insurance Industry to force compliance with regulations prohibiting discrimination on the basis of sex, it has been decided that the

Need help filling out income tax forms? Come to VITA -- It's the Internal Revenue Service's Volunteer Income Tax Assistance program sponsored locally by the Student Accounting Society. At a VITA center you get free help in filling out your federal income tax return form IRS-trained volunteers. Bring your federal income tax package and all earnings and interest statements to the Vandalia Room in the Pioneer Center every Monday and Tuesday from 2:00 p.m. to 8:00 p.m., starting February 6 running through April 17.

VITA will not be open March 20, 21 & 27 due to Spring Vacation.

college will completely divorce itself of any involvement with any particular student health plan.

Again, those who need the services of a student health plan, should consult their local insurance agent for information.

Con't. from pg. 3

residence hall for the break. PLEASE be sure that:

1. You have UNPLUGGED everything in your room (Clocks, etc.).
2. You have TURNED OUT all lights.
3. Your curtains and windows are CLOSED.
4. Your door is LOCKED (and windows, also). Please note that the college is NOT responsible for anything stolen from your room. We will be checking your rooms to see that you have complied with the above requests.

GIL-CO PHARMACY

32 E. Main St.

Phone: 462-8300



Film Developing
Clove Drug Member
Health and Beauty Aids

Hours: Mon.-Fri. 8:30-6:30

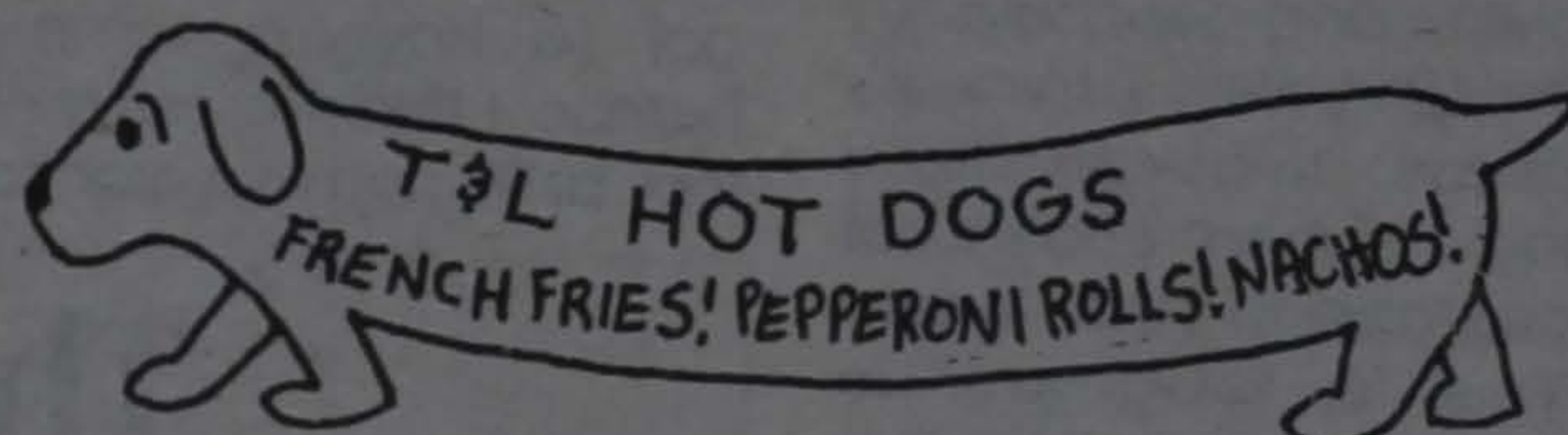
Saturday 8:30-2:00

BRIDGETT'S

SPRING MERCHANDISE NOW IN.
LAYAWAY NOW FOR SPRING!!

PHONE: 462-8580

HOURS: Mon.-Sat. 9:00-5:00



Main St. Beside Ford Garage

BALLROOM DANCE CLASS

Glenville State College
Pioneer Center Ballroom
Wednesday, March 29, 1989
Hours: 7:30-9:00 p.m.

FOX TROT

WALTZ

POLKA

CLOGGING

RHUMBA

TANGO

JITTERBUG

SAMBA

TANGO

TEXAS TWO-STEP

CALL CONTINUING EDUCATION
OFFICE FOR MORE INFORMATION.

OR ARLENE BRISKI 462-7361

BECOME A HOST FAMILY . . .



to a European or
South American
High School
Exchange Student.

AISE brings people together from around the world for an adventure in understanding. You too, can share this adventure by becoming a Host Family. Open your heart and your home to a foreign student who wants to spend a year studying in America.

CALL TOLL-FREE

1-800-SIBLING

American Intercultural
Student Exchange

A NON-PROFIT TAX EXEMPT
EDUCATIONAL FOUNDATION