

THE GLENVILLE MERCURY

Glenville State College September 12, 1990 Volume 62 Number 2

WV Symphony Under the Direction of Maestro Conlin



Special Guest Artist Wendy Chen

GSC Hosts WV Symphony

Glenville State College will welcome the renowned West Virginia Symphony on Monday, September 17, at 8:00 p.m.

The symphony is one of the highlights of a week of festivities scheduled to celebrate the opening of the school's new \$4.4 million fine arts building.

The West Virginia Symphony -originally the Charleston Symphony Orchestra-is embarking on its second half-century of artistic growth. Under the masterful direction of Thomas Conlin, the professional orchestra has become known as the region's premier performing arts organization. Maestro Conlin, who doubles as Music Director with responsibilities for setting the artistic agenda, develops innovative concert programs that balance the great symphonic masterpieces of the past with the most adventurous contemporary repertoire.

The West Virginia Symphony's evening program at Glenville State College will be further enhanced by the orchestra's guest artist Wendy Chen. Chen, a nationally recognized classical pianist, will make GSC her final concert appearance before representing the United States in the prestigious International Chopin Competition in Warsaw.

The 17-year-old Chen, who recently took first place in the Fourth

National Chopin Piano Competition, has a laid-back attitude that carries over into her performance.

"For some reason, I just go play. I play for myself...I don't feel any pressure to do well or win...I like playing in front of an audience...I get this natural high from performing. Also, a lot of people have told me that I don't have any hang-ups about performing. I just do it."

And she does it well. In reviewing her performance at the Chopin Competition, The Miami Herald said "Chen displayed complete command...her spontaneous talent impressed the most distinguished jury ever assembled for a Chopin Competition."

Her performance with the West Virginia Symphony at Glenville State College will include Frederic Chopin: Piano Concerto No. 1, Dimitri Shostakovich: Symphony No. 1, and Samuel Barber: Overture to The School for Scandal.

Tickets will be available to the public beginning September 10, at a cost of \$5 per seat. Tickets may be obtained between 9:00 a.m. and 3:00 p.m. in the GSC Fine Arts Building, or by telephone (462-7361, ext. 350) during those same hours. Reservations will be made on a "first come, first serve" basis. Dress is semi-formal.

Big Band is Back

Big Band dance music will come to the Glenville State College campus ballroom on Saturday, September 22, from 9:00 p.m. to 12:00 p.m.

Dusty Rhodes, a well known musician in central West Virginia, will direct "The Band Directors Big Band." Rhodes describes the music of the BBB's, as the group is sometimes called, as very danceable music. "It is music for people who want to dance several different styles."

Rhodes finds that many young people today enjoy the Big Band sound of the 40's and 50's as much as the older fans do.

The band has been together for three years, and consists of 15 members who are band directors themselves. "They are good musicians," Rhodes says, "the tops in the area."

Some of the dance music that the group plays is from the well known bands of Tommy Dorsey and Glenn Miller, popular during World War II. The BBB's play a rock version of "Proud Mary" and a jazz version of "Won't You Come Home, Bill Bailey." Adding to the variety are some 60's and 70's soft rock, as well as some waltzes and Latin tunes. Rhodes says, "we play the good old favorites, the standards

of the Big Band era, such as 'In the Mood,' 'String of Pearls,' 'Night Train,' and 'Pennsylvania 6-5000.'"

The band has a standard Big Band set-up: five saxophones, six brass and three rhythm instruments.

Coming to perform dance music for a Gilmer County and Glenville State crowd is a "sentimental journey" for Rhodes; he was band director for five Gilmer County high schools for six years during

the early 50's. Rhodes says he is looking forward to a big crowd attending the dance. "It's like coming home. I feel very sentimental about it. I have many friends still there in Gilmer County and Glenville. I love the people."

Tickets for the dance will be available at the door at a cost of \$1 for student couples. All others will be admitted for \$10 per single and \$15 per couple.

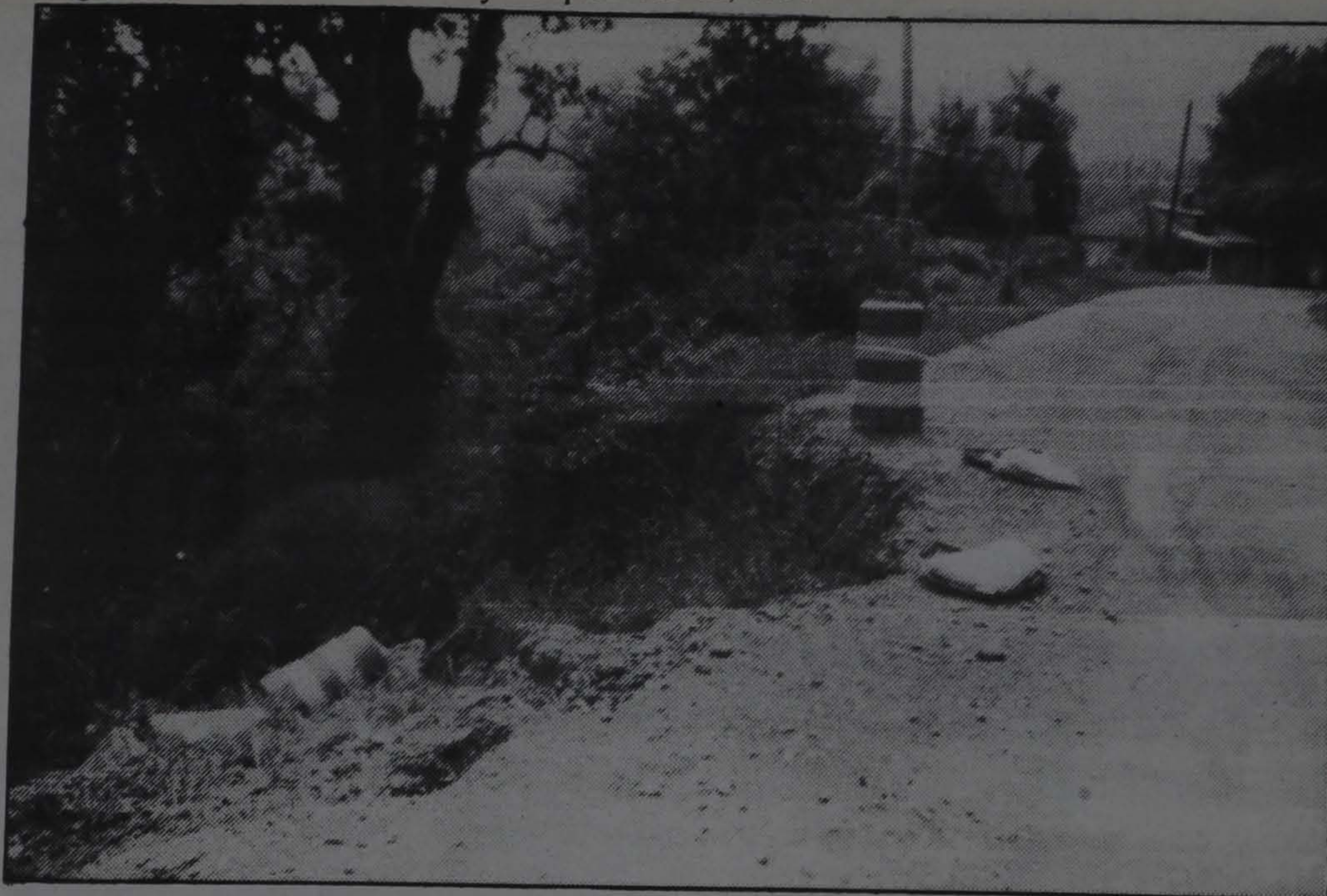
GSC Art Gala

Glenville State College has designated the week of September 17 as Dedication Week for GSC's new Fine Arts Building. In honor of the new addition to GSC's campus, the Fine Arts Department will host a faculty/student art show. The student section of the show will be held, weather permitting, in the courtyard of the new building on Tuesday, September 18. While viewing the works of art, students and faculty alike can beat the heat, so to speak, and indulge in free ice cream. GSC's Student Congress will provide the ice cream served at 2:00. If bad weather prevails, the student exhibit will be moved inside the building.

The faculty division of the art

show is under the control of Art Professor George Harper, M. F. A. Faculty artwork will be displayed in the new art gallery located on the first floor of the Fine Arts Building.

In order to be eligible for the student portion of the art show, you must be an art major or currently enrolled in a GSC art class. Entries at this time are limited to only two, 2-dimensional works; however, if space is available, entrants may be able to enter more than two items. Interested students can contact Kris Rogers at 462-7712, or Janet Rogers at 462-7361 ext. 225 (office 202-N, Heflin Student Center). The deadline for the students to enter art work is Friday, September 14.



Delayed Repairs Cause Dangers

GSC students and faculty have been faced with a major problem all through the summer months. As the fall semester begins, the situation has yet to be corrected. A very dangerous section of road just above College Street has been caving in for several months and continues to worsen. With each rain the area becomes even more dangerous.

Little progress has been made to resolve the danger this portion of road causes. The Department of

Highways has made attempts to warn drivers of the hazards by placing orange ribbons and a yield sign near the area to allow only one lane of traffic to pass through. However, at certain times of day the road is in heavy use and becomes most dangerous. The ribbons and sign placed around the area to warn drivers of the dangers do little to solve the problems the area causes.

Another danger for drivers is a curve located very close to the

hazardous section of road. Those who are not aware of the dangers are at a high risk when traveling this route.

According to a college spokesperson, the area is not on college property; therefore, the college can do nothing to correct the problem. The Gilmer County division of the West Virginia Department of Highways was contacted, but was not available for comment.

by Arson Workman

Dress For Success in the Business World

College students, long accustomed to baggy sweats, worn-out blue jeans and over-sized sweatshirts, will have to drastically change their attire upon entering the job market. No longer will they be able to tumble out of bed and grab whatever is lying on the floor or the first thing they come to in the closet. If we want to make the transition from college kid to future executive we must "look the part to play the part," according to fashion experts. This means creating a working wardrobe that makes us look and feel successful.

How can we afford to dress in fashionable, expensive clothes if we don't even have jobs yet? This is the time to say "charge it." Just think of it as an investment in your career. A career begins with a job interview, so buy decent clothes at the onset. We mustn't think of quantity, but of quality. A well-made pair of shoes or a tailored suit can be utilized for years of wear. Visiting an office before the interview or the first day of work to notice how the employees are

dressed would insure that you dress appropriately.

A fashionable wardrobe will vary depending on your field and location. While men usually require a classic gray or navy suit, women should have at least one conservative suit. Remember that how you are dressed makes an important statement. At this crucial point in a career, a snazzy, rich image is not what you should portray. Rather, a serious, "I want to be part of the team" attitude is desired. Heavy make-up, large pieces of jewelry and sexy, revealing clothing aren't appropriate for today's career woman. Earrings and pony tails are definite mistakes for men, says Jean Callahan of *Career Futures*. She also advises to "wait until you have more than a tuna sandwich and a *Newsweek* magazine to carry before you purchase a leather briefcase."

Don't despair. Current fashions are not drab and boring. Classic designs have been updated for a trendy change in business wear. Dress codes are not as stringent

either. No longer does a white shirt, pearls, a classic black skirt and pumps constitute proper corporate style for women.

With today's high prices, the ability to mix and match is a big plus. A conscientious shopper can put together a wardrobe that can be used both during the workweek and the weekends. For example, a woman should buy a plain-cut, tailored jacket coupled with a short (to the knee or just below the knee) skirt or pair of narrow slacks. For business meetings, a white blouse with the jacket and skirt is a perfect combination. The jacket could also be matched with trousers and a turtleneck. For a third outfit the skirt can be paired with a sweater. For the weekend out, the jacket looks sharp with jeans.

Women mustn't always wear suits or classic-cut skirts. As long as a dress isn't too frilly, tight, or short it is appropriate for the working woman of the 90's. High heels aren't a must either. Let's face it -

Con't on Page 4

Tuberculin Skin Tests Given

Chapter 16, Article 3, Section 4a of the West Virginia Code requires that all persons having contact with school children shall obtain a Tuberculin Skin Test as approved by the Director of the Department of Health.

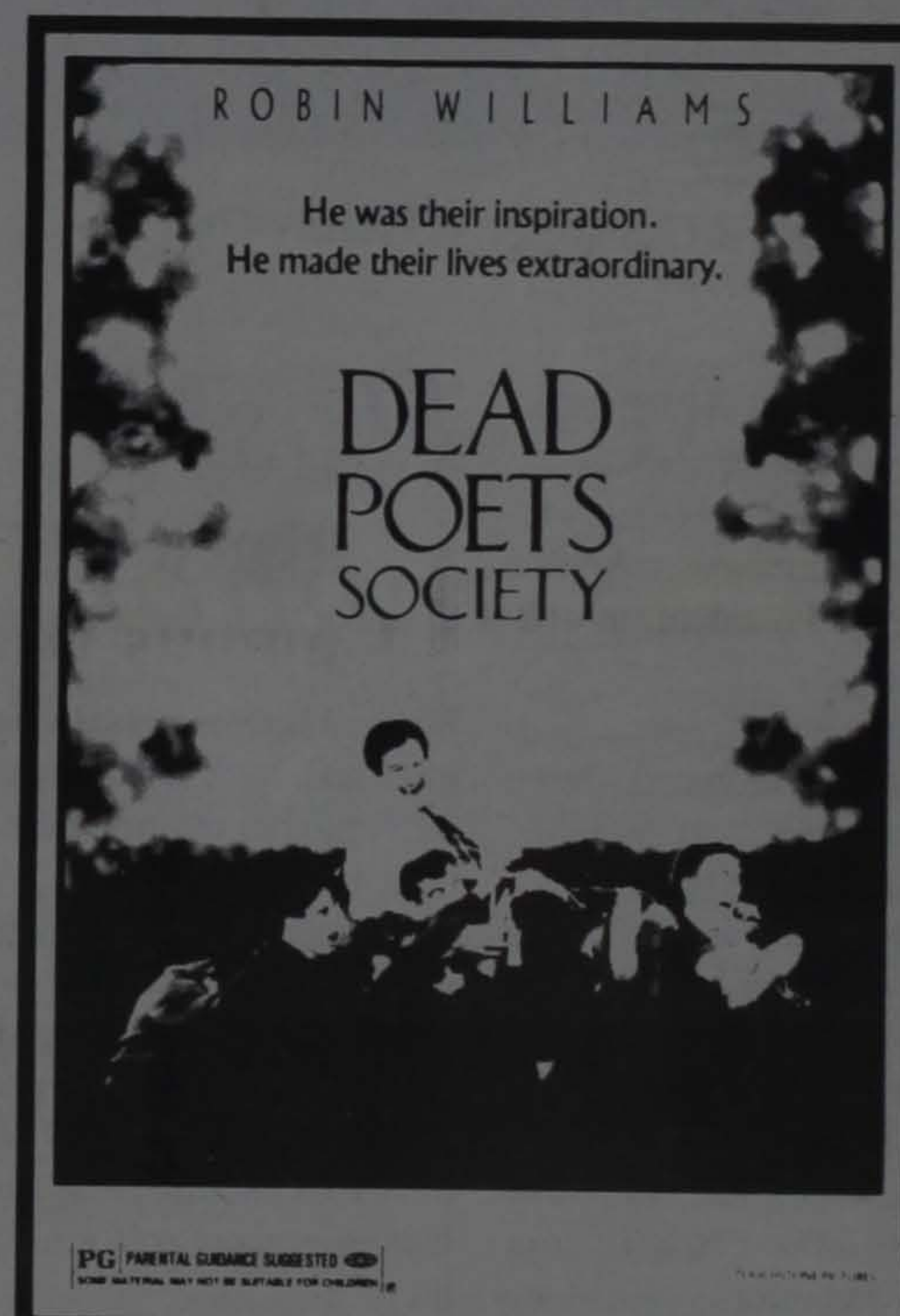
In compliance with the above requirement, all students planning to enter the public schools in 1990 must have a Tuberculin Skin Test. (Tests results are valid for two (2) years, so hold on to your card.) Results of the test must be submitted to public school officials prior to the time students report for observation, activities, or student teaching. If you have had a positive reaction in the past, please advise the staff prior to the inoculation - you may need to obtain a chest x-

ray. Arrangements have been made for students to have a TB skin test in Dr. Proctor's office at the Gilmer County Clinic located on Mingo Road.

INNOCULATION DATES:
Monday, Sept. 17, 1990
9 a.m.-5 p.m.
Tuesday, Sept. 18, 1990
9 a.m.-7 p.m.

TEST RESULT DATES:
Wednesday, Sept. 19, 1990
9 a.m.-2 p.m.
Thursday, Sept. 20, 1990
9 a.m.-5 p.m.

There is a \$1.00 charge for a Tuberculin Test.



Wednesday, September 12
Heflin Student Center
8:00p.m.

Bit of Italy!

Authentic Italian
Derrick Cafe

Derrick Lounge & Restaurant

Thursday, September 13

Cafe-11 a.m. to 8 p.m.

I.L. Room-

To Go Orders Call 462-7752

Potpourri

Phi Beta Lambda Meets

The first meeting of the Phi Beta Lambda chapter of Glenville State College was held in room 100 of the Administration Building at 12:45 on September 4, 1990. The treasurer's report was given with a current balance of \$65.92 on account. No old business was discussed.

In new business it was announced that dues would be \$15.00 a semester and would be due no later than midterm. It was voted by those present to hold PBL's member meetings on every 2nd and 4th Tuesdays at 12:45 in room 100 of the Administration Building. A pool party, with the Student Accounting Society, was tentatively set for Wednesday, September 11, at 7:00 p.m. in the Physical Education Building. The meeting was adjourned at 1:15.

Our next meeting will be on September 11, at 12:45 in 100 AB. All business majors are welcome. If you are interested in PBL, come to one of our meetings and see if you would like to become a member. If you have any questions, call Steve Donaker, PBL President, at 462-1444.

Graduate School

Preston Jones from West Virginia University Graduate School will be on campus Tuesday, September 18, 1990 in the Heflin Student Center Lobby from 10:30 a.m. to 2:00 p.m.

Anyone interested in attending graduate school should take time to talk with Mr. Jones.

Homecoming Nominations

Nominations for GSC Homecoming Queen and her Court will be accepted at the Student Services office between 8:00 a.m. and 4:00 p.m. from Monday, September 17 through Friday, September 21.

Pictures for all candidates will be taken on Monday, September 24 at the Mercury Office. All posters must be approved and may be hung from Tuesday, September 25 through Tuesday, October 2. Elections will be held in the Heflin Student Center on Wednesday and Thursday, October 3 and 4, and in the residence halls Wednesday, October 3. Winners will be announced on Thursday, October 4.

Pictures of the Homecoming Queen and her Court will be taken on Sunday, October 7 at 6:00 p.m.

**Be Competitive
Reach GSC
Campus Wide
Advertise in
The Mercury**

The Glenville Mercury is published weekly during the school year for \$5 per year. POSTMASTER: Send address changes to The Glenville Mercury, Box 207, Glenville State College, Glenville, WV 26351.

Sigma Sigma Sigma

Sigma Sigma Sigma Sorority would like to welcome back students and staff. All alumnae are invited for bowling in the game room Sept. 20 from 7-9. Please come and join the fun!

All girls are reminded that Formal Rush will be Sept. 23 through Sept. 30. Any girls interested in attending can sign up between Sept. 17 through Sept. 21. There will be a sign up table in the Heflin Center from 11-1 daily. The cost is one dollar. If you want to come and cannot sign up that week, you can register the first night of Formal Rush. The purpose of Formal Rush is for any girls interested in a sorority to get acquainted with the sorority members. All girls are encouraged to attend!

Collegiate 4-H

Collegiate 4-H will meet on Tuesday, September 18th at 7:00 p.m. at the Wesley Foundation. The club will continue to meet twice each month thereafter.

Planned activities for the year include:

- Host Program for 4-H members from other schools to visit Glenville State Campus
- Dance to promote Alcohol Awareness (Mocktails to be served)
- Activities for GSC Week being discussed

All are invited to join us!

**Be Competitive
Reach GSC
Campus Wide
Advertise in
The Mercury**

Chapel Service

Chapel service in the Wesley Foundation will be held Tuesday, September 18 from 12:45 p.m. to 1:15 p.m. Participants will be Yvonne King and Paul Peck, faculty members; the Rev. Karen Frank, campus pastor; and Linda Malcomb, GSC student.

Chapel service is held every Tuesday at the Wesley Foundation.

Parking and Police Concern Students

How many gallons of gas do you burn driving around looking for a place to park? How many times have you been pulled over by the town cops for no apparent reason? These two questions continually arise in conversations between students, but they seem to have no answers. I want to discuss some possible answers.

Let's begin with the parking problems. Commuters are always the last students to park on campus, and they usually must park furthest away and walk the longest distance to classes. The Glenville State College administration is aware of this problem and is trying to remedy it. Their solution was to call Town Hall and have parking meters reinstalled near the Fine Arts Building on Court and High Streets. Their reasoning was to prevent dorm residents from parking on the streets for the entire week, thus freeing up parking spaces for commuters. For those who inquire about why parking meters are on campus but not on Main Street, Mayor Bruce Smith said that originally an anonymous donor gave the city money to remove parking meters so that residents would patronize businesses on Main Street. Since then, a B & O tax on city businesses helps to keep Main Street repaired. However, the College as a State institution has no taxes to cover repairs on Court and High Streets. The city needs the revenue from the meters to pay for repairs to the streets on the campus. We anticipate that town policemen will check for parking violations on Court and High Streets.

Reference to the town police brings us to the second topic. Are the town cops more inclined to harass college students by pulling them over for no apparent reason? Many students have complained about being pulled over, and word is quickly spreading that the police will incriminate anybody for driving under the influence. Now that this awareness is across campus, do the police need to continue to set examples? Students need to be alerted to the increased patrol duties of the local police.

The reason for increased patrol duties, according to city policeman Carl Ballengee, is because the State of West Virginia gave a grant to the Glenville City Police. The grant supplements the pay of policemen on their days off to patrol for possible drunk drivers. Part of the grant is set aside to pay to educate high school and college students about drunk driving. Officer Ballengee will be giving a seminar in Pickens Hall on September 11, at 7:00 p.m. to inform students about the ill effects of drunk driving.

Perhaps these solutions would be satisfactory. Now, not only do students have to pay the College \$10 for a parking permit, but they also have to pay meters to park by the Fine Arts Building. Maybe another solution to the problem is to limit the parking time on High and Court Streets to a specified, limited time period rather than to install meters. Also, students are aware that police are serious about cracking down on drunk driving. The police need to be cautious about pulling students over because this suggests that the grant is an excuse to harass students. Perhaps police could set up road blocks to stop all people rather than just randomly selected college students. This alternative would better serve bringing an end to drunk driving in our area.

Campus Co-op Grand Opening Sweepstakes!

Wednesday, Sept. 12-Friday, Sept. 21

**GRAND PRIZE-Custom printed
T-shirt, other prizes awarded**

Located in the snack bar

Monday-Friday 9a.m.-2p.m.

Editor-in-Chief	Paul Biser
Sports Editor	Michael Hart
Copy Editor	Carmen Wager
Photographic Editor	Chris Derico
Circulation Manager	Bill Crane
Copy Reader	Janie Clark
Advertising	Sally Smith
	Julie Darnell
Layout Designers	Kate Jennings
	Renee Meffert
Typists	Becky Hufford
	Penny Tustin
Reporters	Lori Burton
	Kate Jennings
	Kristi Rogucki
	Carmen Wager
	Nancy Wayne
	Arson Workman

Con't from page 2

aren't a must either. Let's face it - some women can't be comfortable wearing 2-inch heels, especially in the winter time.

Although several options are open to females, men must wear suits. According to Peter Fressola, fashion consultant, "a well-tailored, single-breasted suit is the basic element of a man's working wardrobe." He suggests that gray flannel pants and a blue blazer are important. The ideal pants are cuffed and pleated, with a full straight leg-not too tapered. He warns to wait until you are calling the shots before you deck out in highly expensive Italian-cut suits and double-breasted jackets. Being too fashion-forward is a mistake.

Men's styles change at a very slow pace, but variations to the classic business look are noticed. Vests are stylish, but reserve the floral prints and tapestry vests for after hours and weekends. Solid colors are the best bet for the business office. Whites and blues are the safest shirt colors while turtlenecks should be avoided. Fashion experts also believe slip-on shoes do not project as serious an image as basic wing-tip or toe-cap oxfords in dark cordovan or black.

A man can use his choice of a tie to enhance his suit and make a statement about himself. Larger, more decorative designs are popular,

while yellow and green ties with tiny patterns are out-of-date. "Red power ties have become a business cliché," indicated Callahan.

Accessories of good quality complete a wardrobe. Well-made shoes are a necessity. Worn properly, jewelry can enhance an outfit. A single gold or silver chain or a strand of pearls is enough for women and too much for men, consultants advise. They also warn against mixing and matching metals and stones and wearing jewelry that jangles. A well-designed watch or conservative cufflinks adequately add to a man's appearance. Color selections are important, too. Drab as they may seem, gray, navy blue and dark green are preferred shades. Black is a depressing color, while whites and yellows are too fanciful for the business world.

Conservatism is the key for job interviews and early years of a career. You want to be noticed and remembered for the skill and talent you exhibit and the work you produce, not the clothing you wear. As you progress, fashion risks can be taken. Treat yourself to a new accessory when you receive your promotion. Remember to first impress your boss and co-workers with your knowledge and willingness to be dedicated to the team effort. Then, dazzle them with your chic fashion choices.

Alumnus of the Week: Rodney Barker



"When I was in the second grade, I came to Glenville to visit my older brother and watch him in a football game. While watching a play presented by the children's theatre, I saw my brother crossing the campus and knew at that moment I would attend Glenville State College where I would play football."

Rodney Barker is the Admissions Counselor at Glenville

State College. As the Admissions Counselor, Rodney must talk with students at 154 high schools around the state, attend the college basketball and high school basketball tournaments in Charleston as a Glenville State College representative, set up both the fall and the spring open houses for individuals interested in attending GSC, and set up a Day on Campus for elementary aged children to acquaint them with college life.

While attending GSC, Rodney played football for the Pioneers for four years, participated in intramurals for two years, helped with intramurals, worked in the print shop for a year and worked in the Alumni House last semester.

Rodney would like to invite any interested students to help him with college tours during the fall open house, which is being held on Saturday, November 3, 1990. Anyone who would like to help needs to call ext. 225 and ask for Rodney or Janet.

Rodney feels "people are the biggest selling point for GSC."



Cathy Harbert Outstanding Student

by Kate Jennings

Cathy Harbert, a senior attending Glenville State College, is a student busy both in academics and extra curricular activities. Cathy is majoring in Multi-Subjects (K-8) with minors in three fields of Special Education: Mentally Impaired, Specific Learning Disabilities, and Behavioral Disorders. Her pending graduation date is May of 1992 and her overall GPA is a 3.0.

Extracurricular activities include a variety of clubs, committees, and other organizations and responsibilities. These activities have included: the Sigma Sigma Sigma Sorority, 4 years; Panhellenic, 2 years; Ladies of the White Rose, 1 year; Student Congress, this year; Curriculum Committee, 2 years; Activities Committee, this year; band, 2 years; office worker, 1 year; Governing Board of Pickens Hall, 2 years, including this year; Outstanding Young Women, 2 years; Dean's List, 1 year. Her hobbies, when Cathy finds time, include reading and aerobics.

Cathy is also active outside college life. She helps with the Gilmer County Special Olympics and coached in the State Special Olympics. While at home taking a break from all her responsibilities at Glenville State College, Cathy is active in the Lumberport United Methodist Church. She participates in the choir and teaches Sunday school and Vacation Bible School.

When asked why she chose to attend Glenville State College, Cathy commented, "I know my professors and my professors know me...people are people, not numbers."

**Be Competitive
Reach GSC
Campus Wide
Advertise in
The Mercury
462-7361 ext.290**

Diminishing Rain Forests- The Bare Facts

by Arson Workman

FACT- Although rainforests cover less than 7% of the Earth's surface they act as the Earth's "lungs," providing 3/5 of the planet's oxygen.

FACT- Nearly all medicines and treatments, including ones for Hodgkins disease and leukemia, are derived from plants located in rainforests.

FACT- 70% of the known species to exist on earth are found in rainforests.

Many key environmental issues face us in the coming decade, but perhaps the most important of these is the loss of rainforests. At the current rate, some 50 acres of rainforest per minute are being destroyed. Two-fifths of the rainforests on earth have already been destroyed and virtually none remain untouched by human hands.

Almost all rainforests are located in third world nations. These countries face two major problems that put great pressures on rainforests - overpopulation and foreign debts.

In order to provide food for growing populations, third world countries use a form of agriculture known as "slash and burn" to provide

badly needed farmland. There is a problem with the "slash and burn" technique. In rainforests, nutrients are in trees and not in soil; therefore, when the trees are cut the nutrients die with them and the soil is not productive.

The other major problem facing third world nations is the huge debts they owe to developed countries. Rainforests have vast amounts of natural resources and developing nations see these as a way to cure their foreign debts. The vast cutting of trees and mining that occurs in rainforests causes tremendous erosion and water pollution that destroys the forests.

What are the solutions to the destruction of rainforests? The most effective plan for preservation is coming from the World Wildlife fund. A plan called "debt for nature" gives underdeveloped nations incentives for establishing nature preserves in exchange for reduction of debts owed to developed nations.

The fate of rainforests currently looks rather bleak. Global cooperation is needed to solve this problem. The United States and other countries, working together, can preserve and protect the rainforests of the world.

United States Praised For Intervention

by Nancy Wayne

Supportive statements by a Soviet Union Foreign Ministry spokesman created a friendly atmosphere for the September 9 summit in Helsinki, Finland, between the United States and the Soviet Union.

On Monday, September 3, the Soviet Foreign Ministry spokesman Gennadi Gerasimov, came to the defense of the U.S. Soviet military commanders and the official Communist Party newspaper, Pravda, had criticized U.S. military actions.

Addressing a news conference in Moscow, Gerasimov objected to the suggestion that the U.S. military build-up in the Persian Gulf threatened the improving relations among the superpowers. He defended the airlifting of more than 100,000 American troops to the Gulf area.

Gerasimov said the U.S. responded legitimately to the Iraq invasion of Kuwait. The Saudi's invited the American soldiers "to protect that country against possible aggression."

CASH TIRE SERVICE

Services Performed: brakes, shocks, alignment, state inspection, oil and lube (\$15.95)

462-5606

Location: on the hill between Foodland and the College

SPORTS

By: Michael Hart

HART'S HEADLINES

Patterns of college students in America today have channeled lifestyles to become increasingly sedentary. Why do we choose to ride the elevator when steps are available? Man has been designed for activity and regular exercise is necessary to develop and maintain an optimal level of good health. Exercise can increase an individual's physical and mental working capacities.

For many college students with sedentary lifestyles, exercise can provide an outlet for mental fatigue. Exercise also aids in posture, contributes to a youthful appearance and increases general vitality. Active individuals appear to have fewer heart attacks, strokes, and other degenerative diseases. This was documented by a Harvard alumni study of 19,000 graduates who were involved in athletics during college and remained active throughout their adult lives. These people fared better in all categories of degenerative diseases than those graduates who chose a sedentary lifestyle.

The heart, like any other muscle in the body, can be strengthened by systematic physical exercise which creates the demand for blood flow, causing the heart rate to increase.

As college students are often lacking in proper rest and a proper diet, a personal exercise program can bring a healthier environment and release mental stress brought about by a stressful college lifestyle.

I urge all college students, if you are not already doing so, to take the time each day to exercise in a form you find comfortable. Do it now before you realize it is too late.

WV WESLEYAN INV.

MEN'S- 8000 M - 12:15 p.m.

1 st	Frostburg State (MD.)	27
2 nd	Rio Grande (OH)	48
3 rd	WV Wesleyan	72
4 th	Glenville State	90

Top 10 Finishers

10th Mickey Grass - 29:15

Other Finishers

12 th	Lee Petty - 30:19
20 th	Ernie Shreve - 31:17
31 st	Jesse Giles - 37:31
34 th	Lester Van Meter - 41:03

Standings

Women - 0-2 Overall 0-1 WVIAC

Men - 0-3 Overall 0-1 WVIAC

Women's - 5000 M - 11:30 a.m.

1 st	Frostburg State (MD.)	35
2 nd	WV Wesleyan	42
3 rd	Glenville State	43

Women's

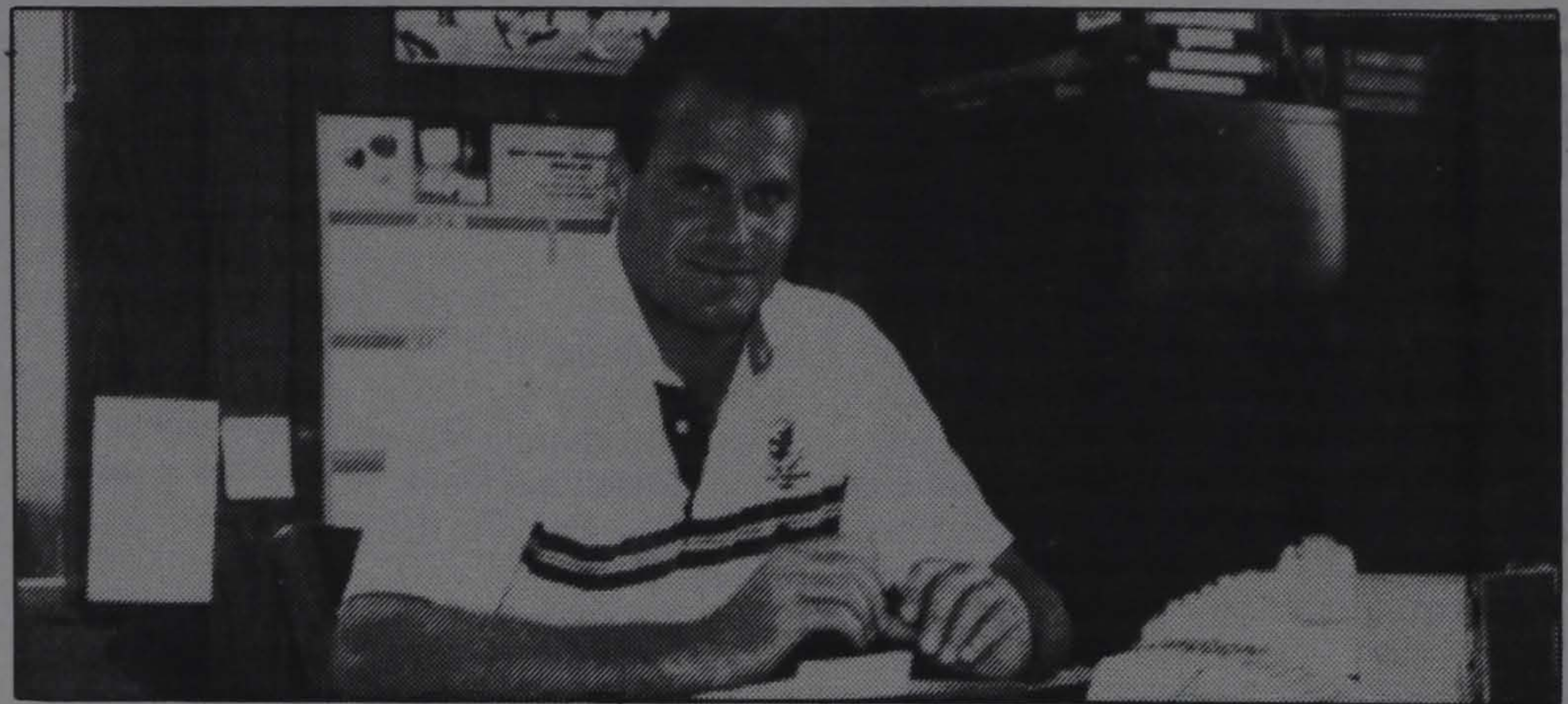
Top Finisher - Renee Peck,
Rio Grande - 20:34

Top 10 Finishers - Women's

7 th	Tammy Taylor - 22:48
8 th	Katrina Riggleman - 23:04

Other Finishers

12 th	- Tracy White - 24:24
13 th	- Tammy Niven - 24:32
16 th	- Jane Hoffman - 25:42



PIONEER' HEAD FOOTBALL COACH- RICH RODRIGUEZ

Coach Approach: Rich Rodriguez

Glenville State College has added many new faces to its 1990 staff. Among these is Marion County native Rich Rodriguez. Coach Rodriguez joined GSC's teaching and coaching staff in the spring of 1990. Instructing students in PED 115 and 320 during the day, Rodriguez, as Head Football Coach, instructs both on and off the football field during the evenings.

With a new coach often comes new ideas. Rodriguez wants his players to give 100% to the Pioneer team effort, but he doesn't want them to forget they are at GSC to obtain a degree. While this is not a new idea, Coach Rodriguez feels he has brought a sense of discipline to the Pioneer team that will keep this particular idea in mind. He feels his players and fellow coaches want the program to be successful and both team and staff know "success and discipline off the field

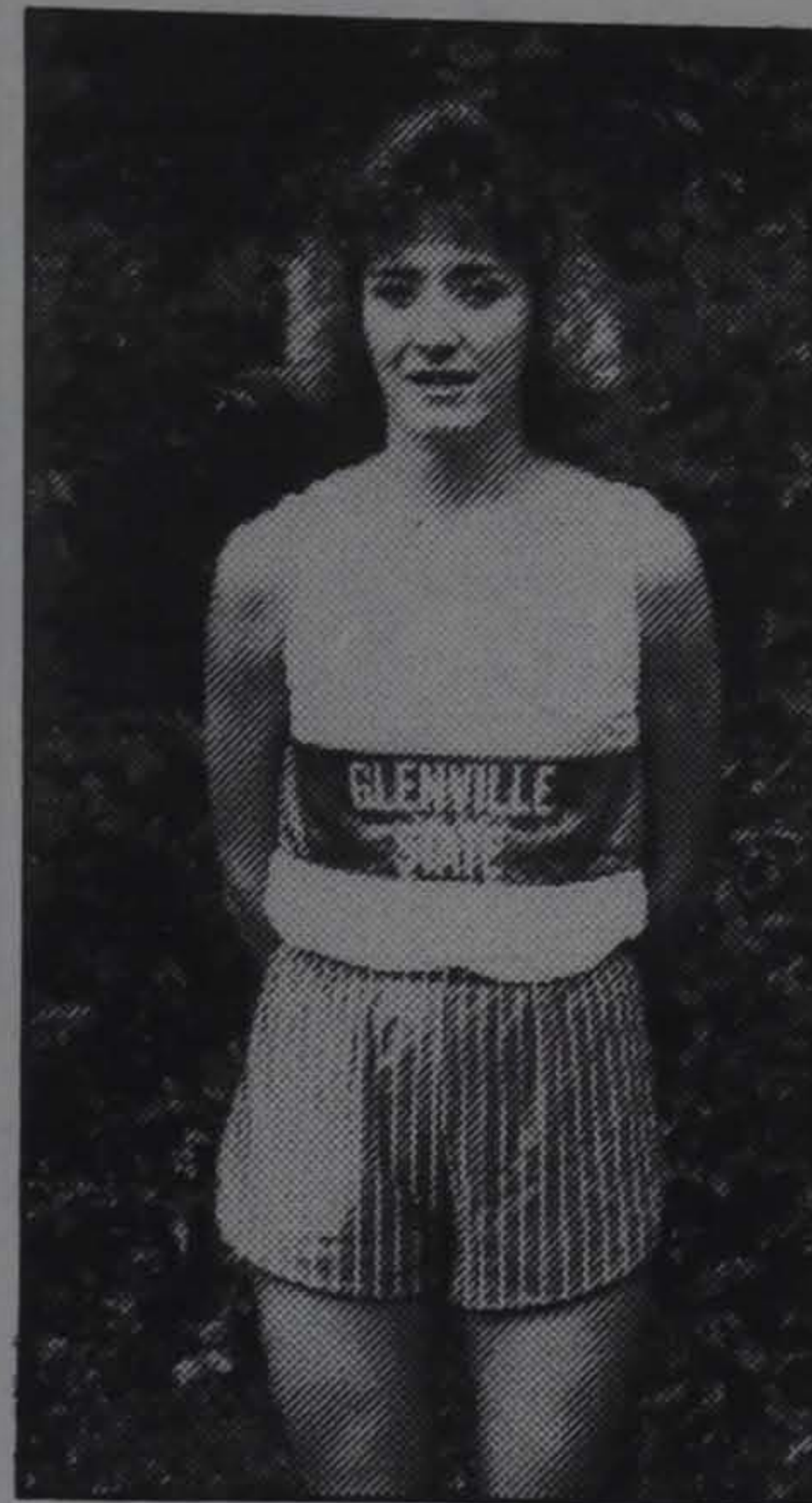
means success and discipline on the field." In order to enhance the academic success of his players, study halls have been organized for the team and "grade checks" are performed regularly. Rodriguez himself holds a B.A. in Physical Education and Safety from West Virginia University and a masters in Physical Education from what is now Salem-Teikyo University.

Glenville State isn't the first college to receive Rich Rodriguez's coaching techniques. In 1985, while completing his Masters, he served the WVU Mountaineers as a graduate assistant. During the years of 1986 and 1987, Rodriguez found himself dressed, not in gold and blue, but in green and white as Salem College's (Salem-Teikyo) Defensive Coordinator. Green and white seemed to be Rodriguez's colors, for in 1988 he became the Salem Tigers' Head Football Coach. Salem College experienced some

drastic changes and its football program was eliminated. Mr. Rodriguez traded in his green and white for the blue and gold once again in 1989 as he worked as a volunteer assistant for the Mountaineers.

Now, of course, Coach Rich Rodriguez dons the traditional blue and white characteristic of the Glenville State College Pioneers. However, when he is not coaching or teaching the students of GSC, sports and physical activity are never far from this Pioneer's mind. Among his sporting favorites are golf, basketball, tennis, and, sometimes, hunting. Spending time with his wife, Rita, a graduate of WVU and a Lewis County native, is also a top priority.

As for the future of Pioneer Football, Coach Rodriguez sees a great deal of work ahead for the program and, of course, lots of discipline! by Kristi Rogucki



Sophomore Tammy Taylor places 7th at the WV Wesleyan Invitational

TO YOUR HEALTH

College Membership Special!

Pay in full to qualify-sign up with a friend:

\$90 (+ tax) for 1 member

\$45 (+ tax) for second member, \$67.50 for each

Faculty and student rates:

\$90 (+ tax) for 1 semester

\$160 (+ tax) for 1 year

Karate-Wednesday 6:15-7:45p.m.

high impact aerobics-Mon.-Fri., 5:15-6:15p.m.

low impact aerobics-Mon., Tues., Thurs., 6:45-7:45p.m.

462-5095

1990 Cross Country Roster

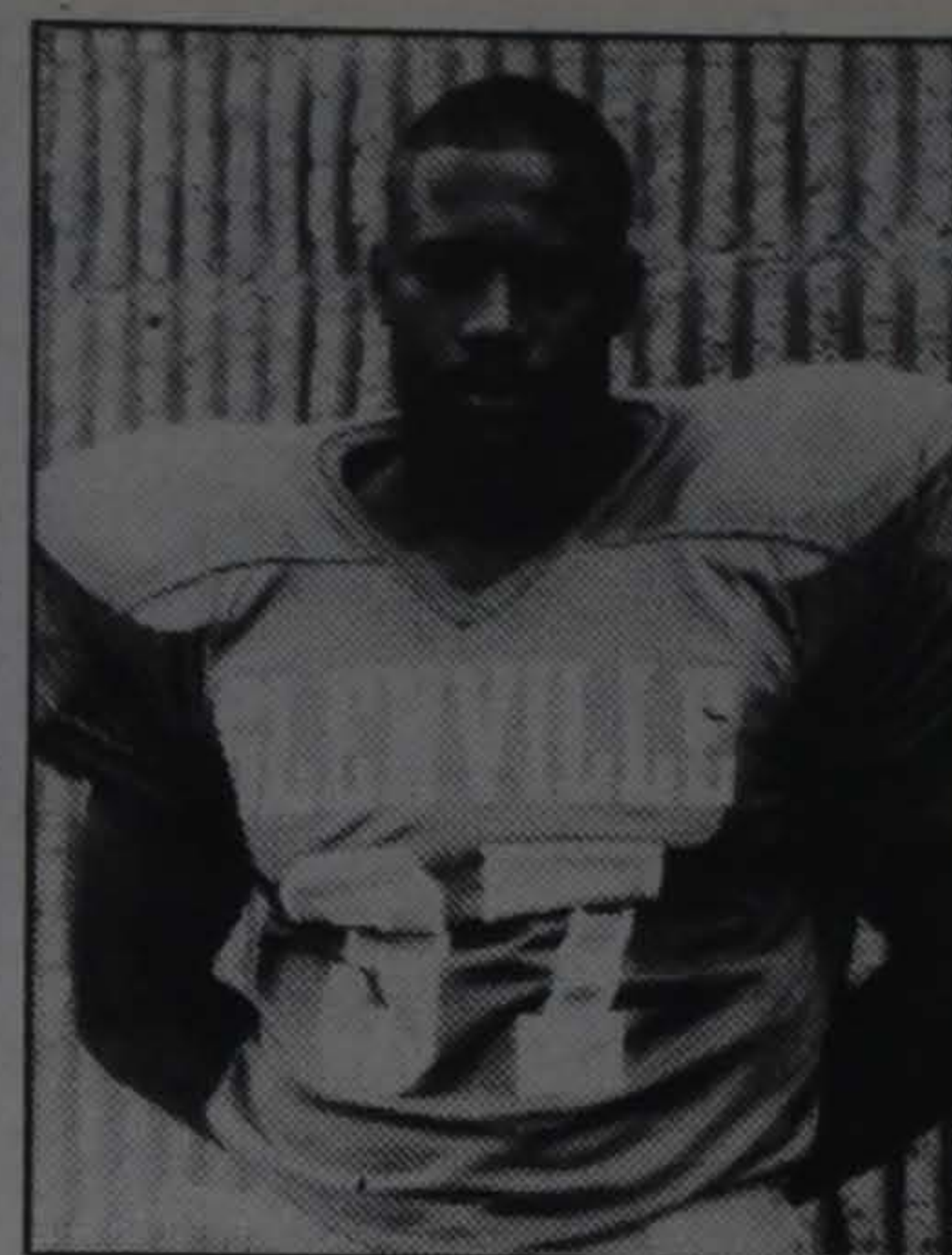
MEN

Mickey Grass	Senior	Milton H.S.
Richard Clark	Junior	Ritchie County H.S.
Jesse Giles	Junior	Martinsburg H.S.
Ernie Shreve	Freshman	Herbert Hoover H.S.
Lester Vanmeter	Freshman	Franklin H.S.

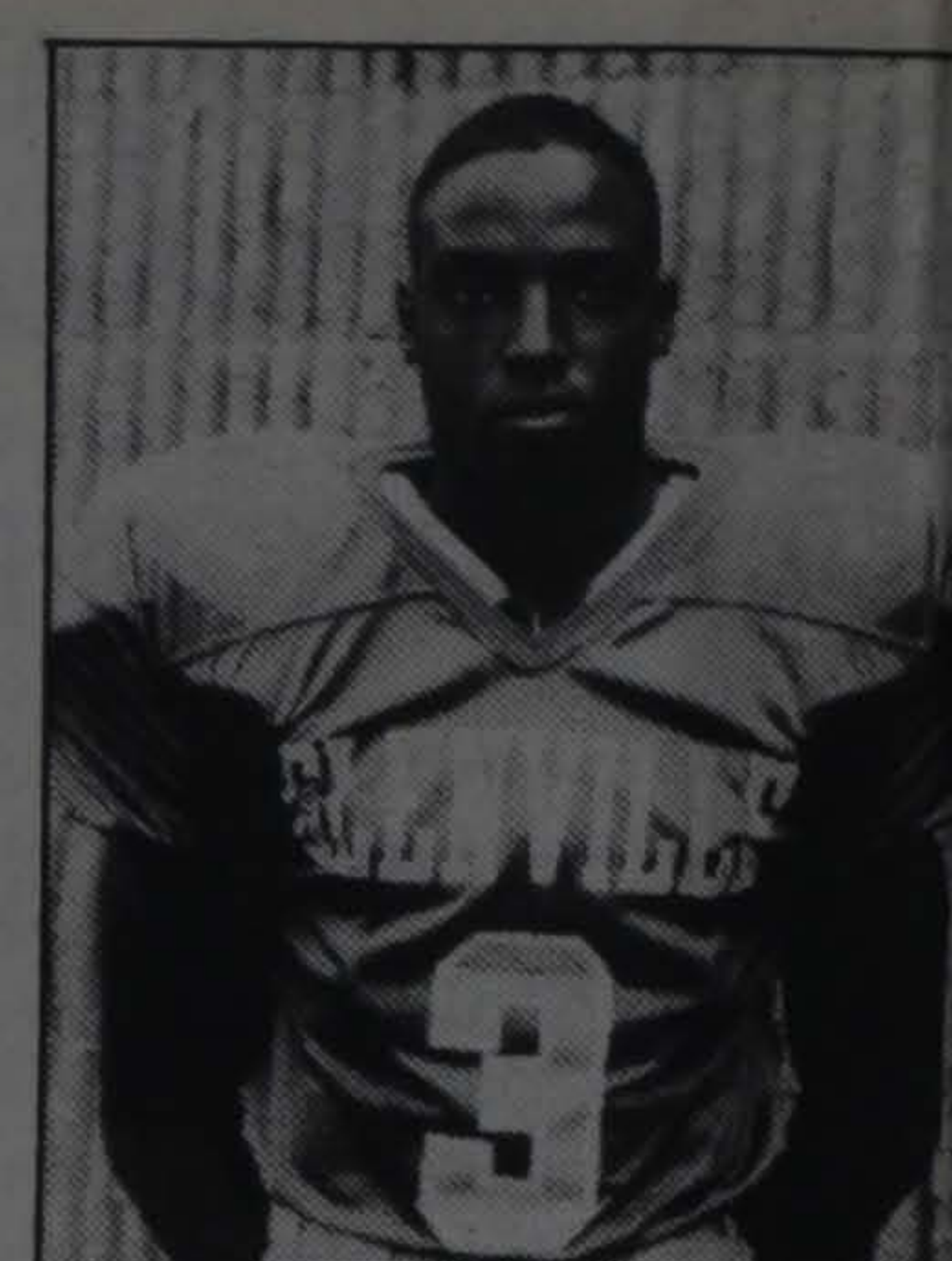
WOMEN

Jane Hoffman	Junior	Wahama H.S.
Katrina Riggleman	Junior	Keyser H.S.
Tracy White	Junior	Buckhannon-Upshur H.S.
Tammy Niven	Sophomore	Wheeling Park H.S.
Tammy Taylor	Sophomore	St. Mary's H.S.

Head Coach: Willie Furr
Asst. Coach: Steve Harold



Frank Myers -
Offensive Player of the Week:
Gained 85 yards on 13 carries,
scoring on a 1-yard touchdown
run.



David Keaton-
Defensive Player of the Week:
Nine tackles, two interceptions,
and one quarterback sack.

Pioneer Grid Stats Through One Game

Passing :

Player	Att	Comp.	Int.	Yards	TD	Long
Keller	30	14	1	130	0	22
Kowchuck	4	0	1	0	0	-

Pass Receiving :

Player	No.	Yards	TD	Long
McGee	4	42	0	22
Schill	3	30	0	16
G. Simpson	2	25	0	15
G. Lewis	2	5	0	5
Lawrence	1	11	0	11

Rushing :

Player	Att	Gain	Net.	TD	Long
Myers	13	85	85	1	47
McGee	1	17	17	0	17
Haddox	3	17	14	0	13
Keller	3	6	-8	0	3
Swaim	1	6	6	0	6

Tackles :

Player	Tackles	Assists	QB Sacks
Pago	4	6	0
Fox	8	1	0
Keaton	2	7	1
Miller	3	5	0
Collins	3	4	0

Interceptions :

Player	Int.	Broken Passes
Keaton	2	0
Pago	0	2
Wilson	0	1
Dilley	0	1

Team Statistics :

Rushing	Att	Gain	Net.	TD	Long
	28	137	103	1	47
Passing	Att	Comp.	Int.	Yard	TD
	34	14	2	130	0
					22

SPORTS TRIVIA

Last Week's Questions:

- 1) What collegiate football team holds the record for the longest unbeaten streak?
- 2) Which professional football player holds the record for the most points scored in a Super Bowl?
- 3) Which former Portland State University quarterback holds 90 NCAA football records?
- 4) What two teams played in the first televised football game?
- 5) Who holds the record for the longest field goal in NFL history?

Last Week's Answers:

- 1) 63 games (59 won, 4 tied) by Washington from 1907 to 1917
- 2) 18, Roger Craig, SF vs. Miami, Jan. 20, 1985 (3 TD)
- 3) Neil Lomax
- 4) Fordham U, NYC was host to Waynesburg, PA in 1939, Fordham won 34-7
- 5) 63 yards by Tom Dempsey, NO vs. Detroit, Nov. 8, 1970

This Week's Questions:

- 1) Who is the heaviest sportsman of all time?
- 2) When was the first night baseball game played?
- 3) Which baseball player has the highest percentage, lifetime batting average?
- 4) Which baseball player has the most base hits in a lifetime?
- 5) Which baseball player holds the record for most consecutive games played?

SPORTSLOOK

Thursday., Sept. 13

Lady Pioneer Volleyball vs. Alderson-Broadbush and WV Tech. Away 6:00 p.m.

Fri./Sat., Sept. 14&15

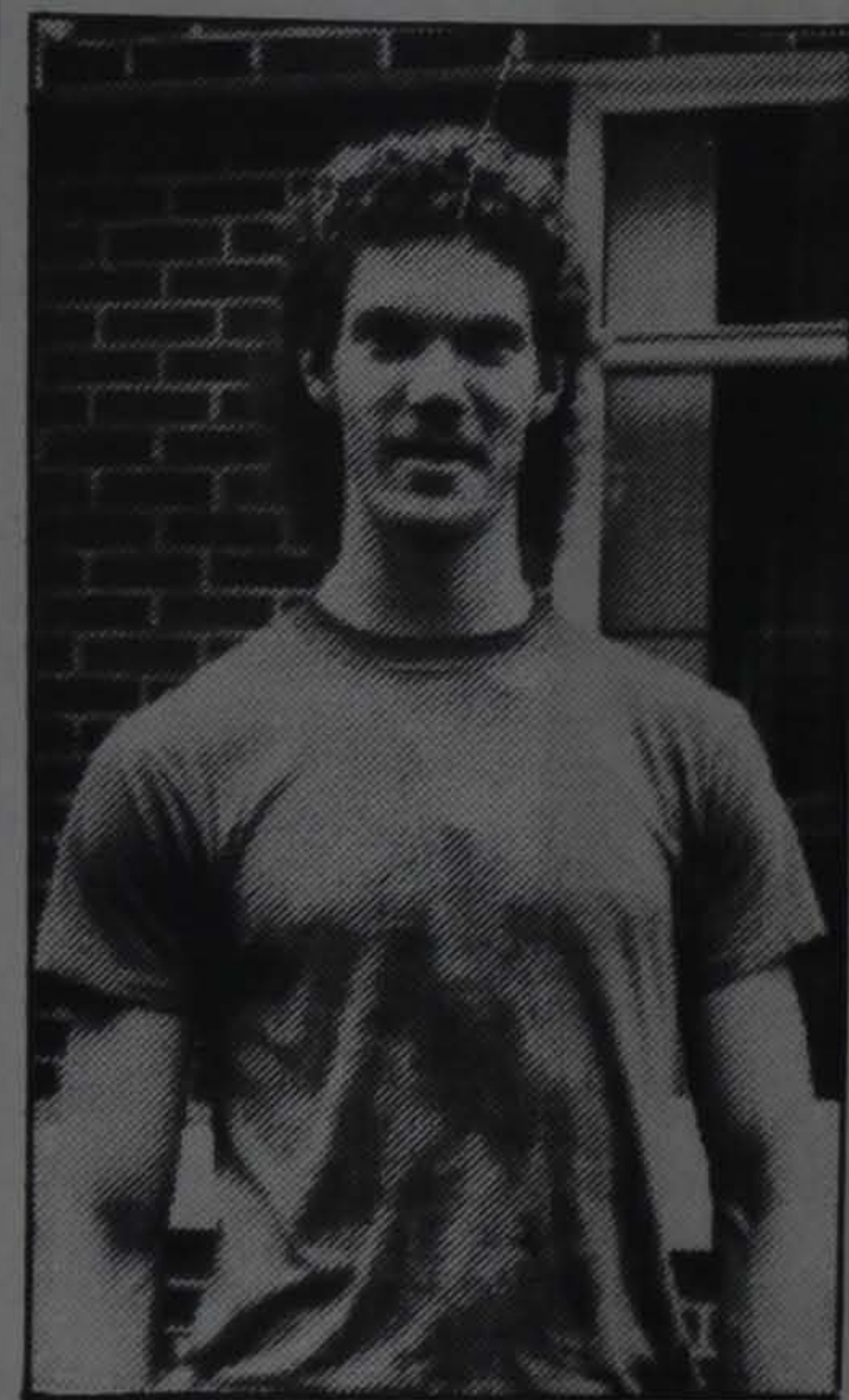
Pioneer Golf at Washington and Lee Invitational, Lexington, Va.

Sat., Sept. 15

Pioneer Cross Country at Indiana University of PA Invitational, Indiana, PA. 11:00 a.m.

Sat., Sept. 15

Pioneer Football vs. Shepherd College. Home 1:30 p.m.



Tom Clark

Former GSC Cross Country Standout Shines

Former GSC cross country standout Tom Clark competed Sat., Sept. 1, 1990 in the 18th annual Charleston Distance Run. Tom covered the 15-mile course in 1:27:12, placing 19th overall and 2nd in his age group. Clark bettered his performance of 1989, which was 1:28:26, placing 27th. Congratulations are extended to Tom from all his former GSC teammates.

Good Shepherd

The Good Shepherd Catholic Church, 701 Mineral Road, would like to welcome all college students. Mass times are 10:00 a.m. Sunday morning and 5:00 p.m. Saturday evenings.

Caperton Announces Funding For Parkersburg Development

Governor Gaston Caperton announced today the award of an \$8,250 Partnership for Progress Challenge Fund to the Area Eight Council to complete the development of a conceptual master plan for the Parkersburg-Vienna Riverfront Park.

The Partnership Council has identified riverfront development as a key component for tourism growth in the area. The riverfront park plan will consider ways to enhance the area's existing tourist attractions such as Blennerhassett Island, Point Park and the Grand Central Mall.

Steven Nicely, chairperson of the Partnership task force on tourism and president of the Wood County Visitors and Convention Bureau, said, "The proven popularity of Point Park as a gateway to historical Blennerhassett State Park and the success of the Grand Central Mall are important to this area. This grant will insure that these two projects work in partnership with each other."

The area's Partnership for Progress Coordinator, Paula Crawford, said the project complements other riverfront

development activities in the area.

The grant will be matched with \$8,250 in local funds, as part of the program's requirements. Caperton announced in May the creation of the \$500,000 Challenge Fund to be matched locally by money or in-kind services for use by the Partnership Councils to achieve their goals.

The Partnership for Progress program is administered through the Governor's Office of Community and Industrial Development.

Blood Drive to be Held

The Red Cross will hold its regular blood drive on campus Tuesday, September 18, at the Wesley Foundation from noon until 6:00 p.m.

The supply of blood in a blood bank goes down during the summer months because people take vacations and spend many hours outside doing all-day activities. Therefore, all blood types are needed at this time.

The blood donor process takes about one hour. This includes: registration, a short medical history,

a blood pressure, iron-level and temperature check, ten minutes for the donation of blood, and ten minutes of rest and refreshments.

If you are healthy, between the ages of 17 and 66, and weigh at least 110 pounds, you can become a Red Cross blood donor.

The Red Cross emphasizes that "blood donors are an absolutely vital part of America's health care system. The blood you give is really a priceless gift. Some people simply cannot live without it."

TODAY'S CROSSWORD PUZZLE

ACROSS

- 1 Mexican food
- 5 Summer —
- 9 Highlanders, perhaps
- 14 Mideast land
- 15 Hole-in-one maker
- 16 Monastery head
- 17 Foot mold
- 18 Josip Broz —
- 19 Slack
- 20 Tenth
- 22 Alights
- 24 Slumbers
- 26 Hockey, e.g.
- 27 Chair
- 29 Sooner than
- 30 Chatter
- 33 Rogue
- 37 Doggy treat
- 38 Ancient Greek city
- 39 Lizard
- 40 Shipping container
- 41 Substance
- 42 Comets' kin
- 44 For each
- 45 UK fliers
- 46 Combat
- 47 Moses' law
- 49 Loftier
- 53 Not resolved
- 57 Orange Bowl site
- 58 Four: pref.
- 59 Deposited
- 61 Amongst

DOWN

- 62 Incident
- 63 Prior nights
- 64 — green
- 65 — of humor
- 66 Renovate
- 67 USSR agcy
- 1 Slants
- 2 Rides out of town on —
- 3 Class
- 4 Johnny —
- 5 House pet
- 6 Corrosive substance
- 7 Some Canadians
- 8 Sought ores
- 9 In abundance
- 10 In re
- 11 Black: poet.
- 12 Was beaten
- 13 Holy women: Fr. abbr.
- 21 Swords
- 23 Additional
- 25 Droop
- 28 Logger
- 30 Farm animal
- 31 Pot filler
- 32 Fairly good grades
- 33 Coarse cornmeal
- 34 Canadian Indian
- 35 Seaweed extract
- 36 Vessel area

PREVIOUS PUZZLE SOLVED

A	L	S	O	S	L	I	M	R	I	D	E	R
L	O	P	S	M	A	R	Y	E	D	U	C	E
T	O	R	E	A	M	O	S	S	I	N	C	E
A	S	I	B	R	A	N	T	E	M	I	T	
R	E	G	R	E	T	S	G	R	I	T	B	A
E	R	E	C	T	P	A	I	R	E	D	O	F
R	O	L	E	T	E	P	E	E	A	L	A	R
G	O	L	D	M	I	N	E	S	C	L	A	R
O	K	S	I	R	I	S	S	O	L			
C	A	V	I	L	S	T	E	E	L	S	T	A
A	L	I	V	E	U	R	G	E	S	P	I	T
S	T	E	E	R	L	O	U	P	R	O	T	A
H	O	R	N	S	A	W	E	S	O	R	E	L

Your group can utilize this space for only \$5.25 in the next edition of The Mercury.

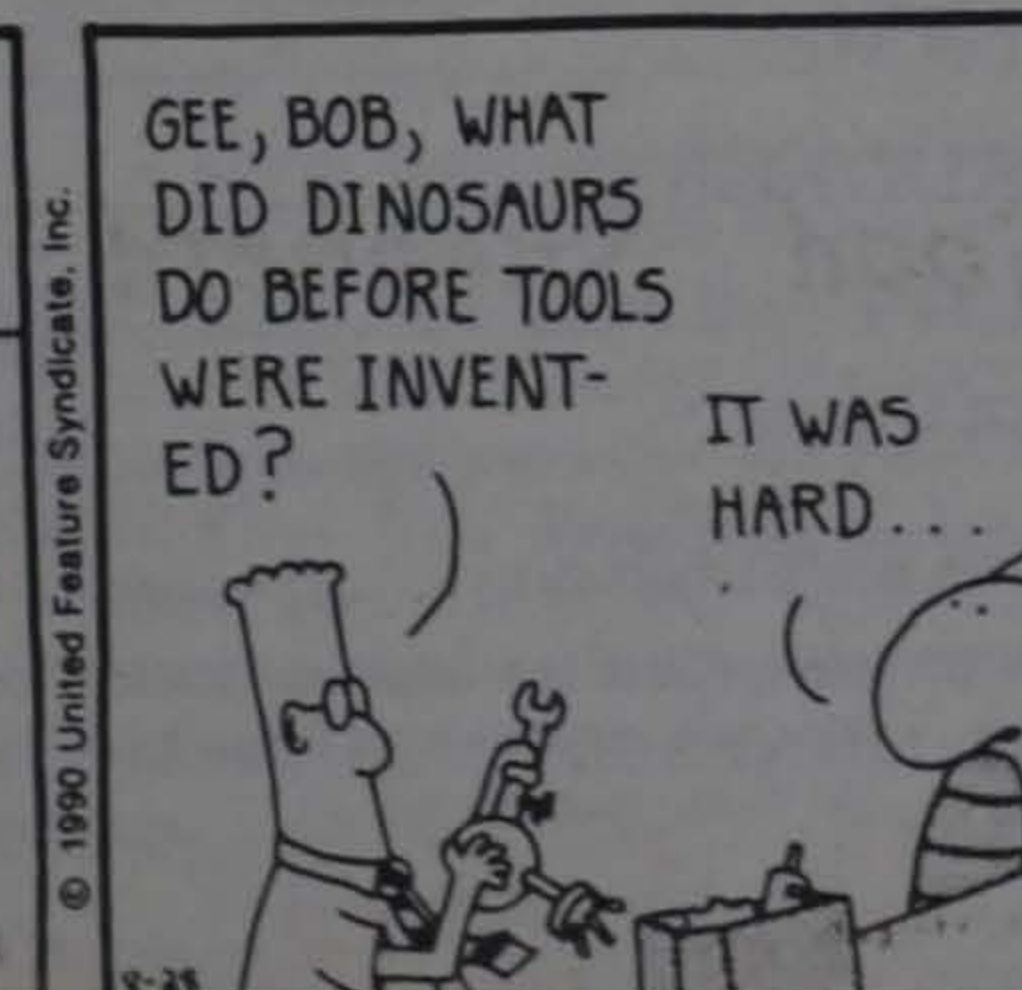
Peanuts



Garfield



Dilbert



1	2	3	4	5	6	7	8	9	10	11	12	13
14				15				16				
17				18				19				
20			21		22			23				
24				25		26						
			27		28		29			30	31	32
33	34	35				36				37		
38					39			40				
41				42				43				
44				45			46					
			47			48		49		50	51	52
53	54	55				56		57				
58					59		60		61			
62					63				64			
65					66				67			

FOODLAND
Customer Appreciation
Days!
September 11-15
Gamble, amusements, on
the midway

Tedford Promotes Understanding



Dr. Barbara Tedford, Professor of English at Glenville State College, will portray the character of Anna Kennedy Davis in a Chautauqua program partially funded by the West Virginia Humanities Council.

Chautauqua is a movement that originated over a hundred years ago on the shores of Lake Chautauqua in New York. It began in 1874 as a two-week school for Sunday school teachers of the Methodist Episcopal Church. The concept changed to include community involvement in subjects ranging from history to mythology and became known as the "people's university." By 1880, the "Chautauqua Era" was in full swing and allured hundreds of thousands of participants each year.

Chautauqua promotes a better understanding of how our ancestors effected and shaped the modern world. An actor or actress assumes the role of a figure in history and as

by Carmen Wager

audience members ask questions and discuss with the individuals from the past, they enhance their knowledge of history. It is a fascinating method of learning that can't be obtained from a classroom lecture or a history book.

Dr. Tedford will undertake the role of Anna Kennedy Davis, a prominent woman from Clarksburg who lived between the years of 1841 and 1917. She was married to John J. Davis, a highly respected Clarksburg lawyer and statesman, and was the mother of 1924 Presidential candidate John W. Davis. Her son became solicitor general of the U.S. and ambassador to Great Britain. Mrs. Davis' granddaughter is one of West Virginia's most renowned authors, with over 20 books to her credit.

Mrs. Davis was a learned woman of her time and was one of the first females in the country to receive a Bachelor of Arts degree from the Women's College in Baltimore. She was also a great influence on the culture of the area by forming study clubs. The effects of her contributions are still being felt. Dr. Tedford will show that Davis "assumed her role as wife and mother while also continuing her lifelong study of history, philosophy, languages and literature."

Dr. Tedford received a Humanities grant to help fund the presentation which began on August 31. She will travel throughout West Virginia discussing "issues relating to race relations, individual rights, opportunities for women, and life-long pursuit of learning."

**Be Competitive
Reach GSC
Campus Wide
Advertise in
*The Mercury***

CLASSIFIED

Large, four bedroom house for rent. Four blocks from campus: Call 462-8977 after 7:00p.m. or contact Joe Drahnak

For Rent: House, 2 large Bed Rooms upstairs, Living Room, Kitchen, Bath downstairs. Will consider four college students. \$200 plus utilities. 462-5543.

Classified ads are available for .85 for 15 words. Send check to : Advertising Manager c/o *Mercury*

Wesley Foundation Provides Update

by Nancy Wayne

The Wesley Foundation Board of Directors held their fall meeting Tuesday, September 4 in the main lounge of the Wesley Foundation. The meeting was convened by Dr. Gary Arbogast, president of the Board. Minutes from the last meeting, which was held in May, were read by the secretary, Mona James. The finance report included proposed budgets for both 1991 and 1992. The primary concern was that the Wesley Foundation has been operating under a 50% budget cut since last spring.

The program report included discussion about "Horns and Halos," the Monday night group that deals with current issues in life. "Back to the Future" is the theme for the Sunday School class that meets from 10:00 to 10:45 a.m. Dr. Joe Evans gave a positive report regarding the Campus Chapel Service which meets from 12:45 to 1:15 p.m. on Tuesdays. Appreciation was expressed for the assistance rendered by John James as pianist for the worship service.

The Thursday night Mocktails program continues to serve many students with a place to come for positive activities and fellowship.

The Board also heard a report that the Francis Asbury Loan, governed by the United Methodist Church, supplies many GSC United Methodist students with low interest (5%) loans.

Blood drives are still being held at the Wesley Foundation five times a year. The Red Cross will hold its next blood drive on Tuesday, September 18, from 12:00 to 6:00 p.m.

The Gilmer County Food Pantry, administered by and housed at the Wesley Foundation, served 43 families from January through August 1990. 2,207 meals were provided for 78 adults and 45 children.

Robert Wilkinson, a lawyer with Ken Hechler's office and liaison between the Wesley Foundation and the West Virginia Conference of the United Methodist Church's Division of Campus Ministry, was in attendance. Mr. Wilkinson provided the Board with details concerning the budgetary mandates from the Annual Conference. A meeting of the Division will be held in Gassaway on October 13 to discuss alternative program options for the campus ministry units in West Virginia. The Division is responsible for five United Methodist Campus Ministry Units: Glenville State College, Fairmont State College, West Liberty State College, Marshall University, and West Virginia University.

Dr. Joe Evans will chair a committee to draft a report of feasible options as alternatives to full-time campus ministry at GSC. This report will first be presented to the executive committee of the local board on September 13. The adopted report will then be presented to the Division of Campus Ministry in October.

GIL-CO PHARMACY

32 E. Main Street

462-8300

Health and Beauty Aids

Clove Drug Member

Film Developing

Mon-Fri 8:30-6:30 Saturday 8:30-2:00

THE SEARCH IS NOW ON! "1991 MISS WEST VIRGINIA USA" PAGEANT



Sabrina Anderson
Miss West Virginia USA

1991 Miss West Virginia USA Pageant
c/o Tri-State Headquarters - Dept. CA
347 Locust Avenue, Washington, PA 15301-3399
Tri-State Headquarters Phone Is 412/225-5343

Application Deadline is September 26, 1990

Letters MUST include a recent snapshot, brief biography, phone number and address.
Miss USA Pageant is part of the family of Paramount Communications, Inc.
Miss West Virginia USA Pageant is 'A Carvern Production'

NO PERFORMING TALENT REQUIRED
If you are an applicant who qualifies and are between the ages of 18 and under 27 by February 1, 1991, never married and at least a six month resident of West Virginia, thus college dorm students are eligible, you could be West Virginia's representative at the CBS-nationally televised Miss USA Pageant in February to compete for over \$200,000 in cash and prizes. The Miss West Virginia USA Pageant for 1991 will be presented at the Radisson Hotel in Huntington, West Virginia, November 9th, 10th and 11th, 1990. The new Miss West Virginia USA along with her expense paid trip to compete in the CBS-nationally televised Miss USA Pageant, will receive over \$2,000 in cash among her many prizes. All girls interested in competing for the title must write:



Do You Want VISA & MasterCard Credit Cards?



Now you can have two of the most recognized and accepted credit cards in the world...Visa® and MasterCard® credit cards... "In your name." EVEN IF YOU ARE NEW IN CREDIT or HAVE BEEN TURNED DOWN BEFORE!

VISA® and MasterCard® the credit cards you deserve and need for— ID—BOOKS—DEPARTMENT STORES—TUITION—ENTERTAINMENT—EMERGENCY CASH—TICKETS—RESTAURANTS—HOTELS—MOTELS—GAS—CAR RENTALS—REPAIRS—AND TO BUILD YOUR CREDIT RATING!

**GUARANTEED
GOLD CARD
VISA/MasterCard
GUARANTEED ISSUE
OR MONEY BACK**

No turn downs!
No credit checks!
No security deposit!

Approval absolutely guaranteed so

MAIL THIS NO RISK COUPON TODAY

STUDENT SERVICES, BOX 224026, HOLLYWOOD, FL 33022

YES! I want VISA®/MasterCard® Credit Cards. Enclosed find \$15 which is 100% refundable if not approved immediately.

NAME _____

ADDRESS _____

CITY _____ STATE _____ ZIP _____

PHONE _____ S.S.# _____

SIGNATURE _____

NOTE: MasterCard is a registered trademark of MasterCard International, Inc.
Visa is a registered trademark of VISA U.S.A. Inc. and VISA International Services Association.

100% GUARANTEED!