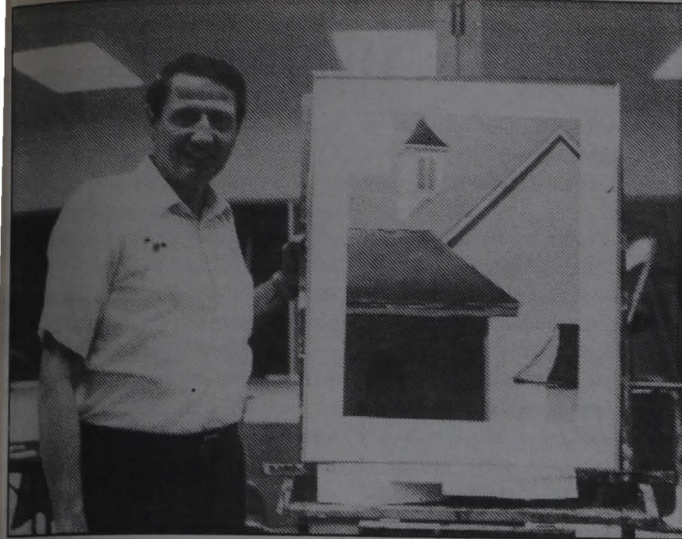


# THE GLENVILLE MERCURY

Glenville State College October 9, 1991 Volume 63 Number 5



Harper displays winning design.

photo by Tina Messenger

## Harper Participates In Two Exhibitions in WV and OH

by Missy Booth

The 18th century was the theme of the annual Yankee Peddler Festival, attended by associate professor of art, George Harper. The festival, which spanned the weekends of September 7-22, was held at Clay's Park Resort in Canal Fulton, Ohio.

Harper, who participated by exhibiting landscape design pottery, was dressed in the fashion of the pioneers of the 1700s. Prepared with an inventory of approximately 250 pieces, he exhibited, sold and demonstrated the actual creation of his type of pottery.

The festival was run strictly in the spirit of the pioneers. The dress, food, and drinks, as well as the demonstrating equipment, were in the style of the time. Plastics and other synthetic materials were prohibited.

Approximately 300 craftsmen exhibited wares

consisting of everything from quilts to musical instruments. Display of work was on an invitation only basis.

The costuming made the festival, "more exciting for the public as a weekend outing but was hard work for the craftsmen who spent most of the time demonstrating," said Harper.

In addition to the Yankee Peddler Festival, Harper was invited to submit two paintings to the 1991 Juried Mountain State Forest Festival Fine Art Exhibit. The exhibit ran from October 2-5, in Elkins, West Virginia.

Of the two works submitted, Harper received a merit award in the professional painting category for "Spiritual Glow," which he painted in honor of his mother who died in 1990.

As of yet, plans for his next exhibit are not final.



L to R: Rumbach, Skiles, Pickens, White and Starcher

photo by Chris Derico

## Homecoming Court Reigns Over Activities During Weekend

Glenville State College is proud to announce the Homecoming Court for 1991. The court which will reign on Saturday, October 26, includes: Mindi Pickens, queen; Tracy White, senior princess; Cindy Skiles, junior princess; Dottie Starcher, sophomore princess; and Julie Rumbach, freshman princess.

Queen, Mindi Pickens is a senior majoring in sports medicine. Sponsored by the Glenville track

team, she is an active member of that organization as well as Ladies of the White Rose, and the GSC cross country team. Pickens is a 1988 graduate of Parkersburg South High School. She is the daughter of Robert and Patricia Pickens of Vienna.

Tracy White, senior princess, is majoring in elementary education. She is an active member of the cross country team, the track

and field team, and Baptist Campus Ministry. She is the daughter of Neil and Donna White of Buckhannon. She is engaged to marry Rodney A. Jamison of Burnsville.

Junior princess, Cindy Skiles is majoring in behavioral sciences. She is an active member of "The Glenville Mercury," the Pioneer Programming Board, and

cont. on pg. 8

## INSIDE what's

ACF Meeting	p.2
Campus Kibitz	p.3
Pioneer Sports	p.5
Arts & Entertainment	p.6



## Committee Designed To Inform Campus of Session Activities

by Rebecca Hufford

The first meeting of the Glenville State College Institutional Legislative Committee was held October 12. The committee was formed by President Simmons to assure that the campus community is well informed of the legislative policies that affect GSC.

The committee is chaired by Dr. James Hilgenberg, professor of history. The other members of the committee include Dr. Joseph Evans, president FAO, Virginia Grottendiek, classified staff representative, Mack Samples, administrative representative, Cathy Harbert, student congress president, and Marty Prince, student representative.

The members of the committee plan to discuss legislative issues that involve colleges in West Virginia, look at ways to improve communication on campus, and develop strategies for informing legislators of their concerns regarding higher education. President Simmons explained, "Even though we all don't want to be politically active, we all need to keep informed, and this committee will be a tremendous help."

At the first meeting, the committee decided to include GSC alumni and student families in plans to contact West Virginia legislators. The committee plans to meet weekly during legislative sessions.

### letter to the editor

## Scheduling Becomes Problem When Getting In Shape

Dear Editor,

One of the largest buildings on our campus is devoted to the art of physical education, health, and fitness. Walk down its halls and you see trophies and plaques celebrating the physical achievements of former and present athletes. Continue and you come upon a sign that encourages the students of GSC to stay fit and healthy by eating right and getting a lot of exercise.

So, off to the weight room you go, eager to begin getting in shape. But, what's there on the front door? "Basketball team using weight room from 2:00 until 4:00." Well, okay, you decide you'll come back later. But, wait, what's this? "Intramural weight lifting from 4:00 to 6:00." Well, you guess you could come back later in the evening.

But when you arrive at 6:00 that evening, there are about twenty people already there. The weight room isn't equipped for that many people, all doing their own thing. And worse yet, you're told you have to leave in 40 minutes because you can only lift during "supervised hours." Much of the equipment is broken, and has been since the beginning of the year.

Why all the trouble? Because people were not picking up the equipment when they were done. But at least that problem is taken care of right? Wrong. I managed to get into the weight room during an unsupervised hour, and the equipment was every where. I spent fifteen minutes cleaning up the place.

So, I guess my point is, we need our equipment repaired, if not replaced, we need better organization of the time spent by

organized teams compared to private use, and we need more time for each. And service with a smile would be nice, too.

Jon Criner

### letter to the editor

## Committee Seeks Best for Mentally Ill

Letter to the Editor:

The recent furor regarding the Weston psychiatric hospital has certainly drawn the attention of the majority of West Virginians. There seems to be no "middle ground" as one either supports building a 150 bed replacement facility, or one supports not building a central facility, and instead, devoting those resources to building community based programs for the mentally ill throughout the state. Each proposal has its merits as well as its drawbacks.

The Legislative Subcommittee on Mental Health that I chair has for several years undertaken to study and to make recommendations regarding the State's delivery of mental health services to its citizenry. This year alone the Committee has visited State facilities, community mental health centers, as well as agencies providing residential services to people with disabilities in small community-based homes.

All West Virginians should recognize that each of these facilities and agencies is performing a great mission and service, and

each has its particular role within the continuum of the delivery of mental health care as we know it to be today.

Undoubtedly, times will continue to change, as will the arguments regarding which system better serves the public in the most cost-effective matter.

In fact, even in the past ten years, opinions regarding quality care have changed radically, as has the actual care itself, which is superior to that which we might even have dared to envision just a few years ago.

Regardless of the controversy which now exists, it is important that all concerned remain focused and mindful of two very important points which seem to have been forgotten in recent weeks and amongst the various arguments both pro and con. First, the Legislative Mental Health Committee, as do all West Virginians, wishes to make the sort of recommendation which is both wise and prudent in light of the State's limited resources devoted to health care, including mental

health care. For that reason, the Committee places a premium on its continued ability to receive quality information, pro and con, regarding the sorts of mental health services which are truly considered state-of-the-art. But secondly, and perhaps more importantly, all of us seem to have forgotten that the issue should not become a matter of legal maneuvering, and strategizing. Diagnosis and treatment with personnel and equipment must be available to any area where new construction is to be undertaken. We must consider the wishes and desires of those who will be most affected by the final decision itself--the consumers of mental health services themselves.

To them we owe our best efforts, our critical thinking, and to them we owe as well their choice in this matter and their chance to be heard equally as we are hearing from others.

Thais Blatnik, senator  
chair, Senate Mental  
Health Committee

## Collective Bargaining Topic of ACF Video

Recent news releases that West Virginia's faculty are the lowest paid in the nation did not come as a surprise to the sixteen members of the Advisory Councils of Faculty (ACF), meeting this week at the College of Graduate Studies in Institute, WV. Although enrollments on campuses across the state have increased, those who teach at the state's colleges and universities have received no pay increase for the 1991-1992 academic year.

The ACF members, who represent the faculty of the states' sixteen institutions of higher education, spent part of their meeting time making a video tape on the

pros and cons of collective bargaining. "At this point, we are only raising the possibility with our respective faculties", said Dr. Joe Simoni, Chairperson of the ACF to the University of West Virginia System. "As highly trained professionals, we tend not to think in terms of unions or bargaining. But we are losing more and more qualified faculty and are finding it extremely difficult to attract replacements with the low salaries this state offers. We want to inform our faculties of the advantages and disadvantages that collective bargaining could bring."

The video tape reflects a discussion between the ACF

representatives and two guests who presented their experiences with higher education collective bargaining. Dr. Jim Tinsman from Kutztown University shared experiences of bargaining through the American Federation of Teachers in a unit made up of the fourteen state teaching universities in Pennsylvania. Dr. Jim Hall related his experiences in a chapter of the American Association of University Professors at the University of Cincinnati which has negotiated several successful contracts. Faculty members fired questions at the two guests, asking for the "down side" as well as the good side of collective

bargaining in higher education. "I think we had an honest and fruitful discussion," concluded Dr. Jim Hilgenberg, Chairperson of the ACF to the State College System. "Frankly, I myself was personally concerned about raising this issue among our faculty. But I think that when our members see this tape they will realize we are presenting options that should be discussed, no matter what they finally decide."

Dr. Simoni and Dr. Hilgenberg represent the state's faculty as voting members on the Board of Trustees and the Board of Directors, respectively.

## Maretti's Restaurant

Rt. 5 (next to Foodland Plaza)

FREE DELIVERY—462-7161  
(Now including Saturday afternoon)

2-12" Pepperoni Pizzas only \$10.45

2-16" One Topping Pizzas only \$13.88

Great Homemade Taste at Low Prices!

New Hours: Mon-Thurs 11a.m.-9 p.m.  
Fri-Sat 11 a.m.-11 p.m.

## Glenville Western Auto

### Featuring:

Sporting Goods  
Guns, Ammo, and  
Bow Hunting Supplies  
Best Prices on Fishing Tackle

Don't Forget All of Your  
Car Cleaning Supplies



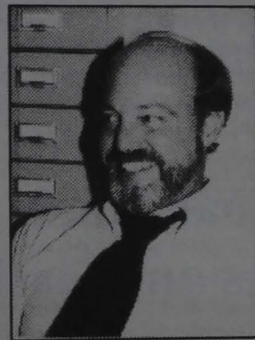
# CAMPUS KIBITZ

by Tracey Moats

If you could ask one of West Virginia's legislators a question regarding higher education in this state, what would you ask them?



Name: Claudia Phillips  
Rank: Sophomore  
Major: Media Management  
Hometown: Buckhannon, WV  
Answer: "I would like to ask the legislators of the state why there isn't enough funds for the education program."



Name: Dr. James Hilgenberg  
Title: Professor of History  
Hometown: Denver, Colorado  
Answer: "How can you expect quality higher education when the resources devoted to it are so inadequate?"



Name: Mary Blake  
Rank: Sophomore  
Major: Behavioral Science  
Hometown: Richwood, WV  
Answer: "Why is there such a significant rise in tuition each year?"



Name: Amy Lopez  
Rank: Sophomore  
Major: Music Education  
Hometown: Minnora, WV  
Answer: "How come legislators give themselves a pay raise and not teachers when teachers are the ones who educated them?"



Name: Brian Coleman  
Rank: Freshman  
Major: Law  
Hometown: Clarksburg, WV  
Answer: "Why don't they make it easier for people who want to go to college so they won't have to be on welfare and food stamps all of their lives?"

photos by Tina Messenger

## Voting Can Promote Issues of Higher Education and Competitive Teacher Salaries

by Rebecca Hufford

Do you vote? If you answered no, is it because the issues before the legislature aren't important to you? An issue that should be important to all of us is the decrease in funding for higher education. Since 1980, state funding has dropped from 17 percent to 12 percent, while costs have continued to increase.

The cuts in funding hurt both students and faculty. Faculty are not paid competitively and many leave to seek positions that pay more appropriate salaries. Students are receiving a lower quality education because colleges don't have enough money to keep highly qualified professors. Students are asked to pay higher tuition costs every year in order for the colleges to meet their budgets.

What can we do about this? One thing we can do is register to vote. The GSC Student Congress will be sponsoring a voter's registration drive in the near future. But don't just register - vote.

Approximately 26,000 students attend West Virginia's two and four year colleges. If all of students and their families would vote for higher education, it could make a difference.

Our legislators need to know how we feel about this issue and we need to know how they feel, also. Write your legislator and demand to know his plans for improving higher education in West Virginia.

A vote is a very powerful tool. If our legislatures won't do something about the situation, we can.

### The Glenville State College Mercury Staff

Editor-in-Chief	Rebecca Hufford
Photographic Editor	Chris Derico
Sports Editor	Billy Hurst
Layout	Cindy Skiles
	Jon Criner
Circulation Manager	Angela Gill
Proofreader	Mitchell Moore
Cartoonists	Jon Criner
	Billy Hurst
Art and Entertainment	David Graham
	Jim Shock
Advertising Manager	Karen Schoolcraft
Typists	Richard Clark
	Cindy Skiles
	Kim Sees
Photographers	Chris Derico
	Heather Messenger
	Tina Messenger
	Howard Lanham
Reporters	Missy Booth
	Tracey Moats
	Anthony Riffe
	Lesley Welton
Advisor	Lisa Booth

The Glenville Mercury is published weekly during the school year for \$6 per year. POSTMASTER: Send address changes to The Glenville Mercury, Box 207, Glenville State College, Glenville, WV 26351. Lisa Booth, 200 High Street, Glenville, WV 26351-1292; Rebecca Hufford, 200 High Street, Glenville, WV 26351-1292; Angela Gill, 200 High Street, Glenville, WV 26351-1292. Total number of copies-2000; Paid circulation-1690; Mail subscription-23; Total circulation-1713; Free distribution by mail-187; Total distribution-1900; Copies not distributed-50.

All submissions to "The Mercury" are due by the Tuesday, one week prior to publishing, at 4 p.m. and must be typed.



# Homecoming Dance to Feature Popular Philly-Loo Byrd Band

The 1991 Glenville State College Alumni Homecoming Dance will be held at the Glimmer County Recreation Center from 9:00 p.m. to 1:00 a.m. on Saturday, October 26. The featured band will be the Philly-Loo-Byrd.

The Philly-Loo-Byrd consists of lead vocalist Bob Britton, Vice-President of ARC Corporation, Summersville; organist Roscoe Polk, owner of Polk Construction Company, Ravenswood; lead guitarist Gerald Ramsburg, General Manager of C&W Coal Company, Clarksburg; bass guitarist J.B. Butcher, a classroom teacher and musician with the Charleston-based group Sleeper; and drummer Ron Nichols, a regional education administrator in Summersville.

The group has a long association with GSC, beginning

in 1966 as an inter-fraternity band called the Greeks. In 1967, with personnel changes, the band became the Philly-Loo-Byrd. The name was suggested by Rensel Ramsburg (Gerald's father) after his World War II C-47 airplane.

The band played throughout West Virginia from 1967-1970 at many colleges and high schools. They were often featured at popular night spots such as the Carousel in Clarksburg, the Oxford Inn in Beckley, the Checkmate in Charleston, and Snyder's in Buckhannon.

As a premiere band of the late 60's, the group also performed in Atlantic City, New Jersey at the Dunes, the Flame, and the Fort Pitt Musical Lounge. In 1969, they toured West Virginia with the Spiral Staircase who had the 60's hit, "More

Today Than Yesterday."

After many requests from nostalgic fans, the Philly-Loo-Byrd reunited in 1989 after 19 years. Since then they have appeared several times, including a special performance at the Wilderness Plantation in Jane Lew, one of the area's largest night clubs.

The Philly-Loo-Byrd's versatility and strong vocal talent make the group appealing to a wide audience. The band takes you back to hits by the Drifters, Temptations, Righteous Brothers, Three Dog Night, and other top groups of the 1960's.

The Homecoming Dance is open to the public. Tickets are available at the door. For more information, contact the GSC Alumni Office at 462-7361, ext. 122.

## PBL Offers Variety of Information to Membership

The Phi Beta Lambda (PBL) is a growing national organization which provides opportunities for college students to gain hands-on experience in business.

Some of the specific goals of PBL include developing business leadership, creating an understanding of American business enterprise, and facilitating the transition from school to work.

Concerning PBL, Andre Dekok, membership chairman of the Glenville State College chapter said, "Membership in PBL provides invaluable experience for its members. The organization strengthens the confidence of students in themselves and their work, and assists students in the establishment of occupational goals. Additionally, participation in the organization provides its members with an edge in business situations, including job interviews."

Regular meetings are held twice a month during the school year.

To be eligible to become an active member of PBL at Glenville State, a student must be enrolled in a business class.

For more information on PBL, contact Andre Dekok at 462-7583.

**Library Hours**  
8-10 M-Th  
8-4:30 F  
11-4 Sat. 2-10 Sun.

## Pioneer 10K Road Race Offers Trophies and Cash

The sixth annual Pioneer 10-K road race will start off the 1991 homecoming festivities at Glenville State College. The 6.2 mile race which begins on Main Street in Glenville, will begin at 8 a.m. on Saturday, October 26. The competition awards a First Place prize of \$150, and a Second Place prize of \$100. The Third Place prize is a three-month gift certificate to To Your Health Fitness Center.

Trophies for the top three men and women will be awarded along with medals for the top three men and women will be awarded along with medals for the top three finishers in each age group. Trophies will also be awarded for the first GSC student and alumnus to finish the race.

For more information, contact Jeremy Brown, 462-7361, extension 297.

## GIL-CO PHARMACY

32 E. Main Street  
462-8300

Health and Beauty Aids  
Clove Drug Member  
Film Developing

Mon-Fri 8:30-6:30 Saturday 8:30-2:00

## BOSS'S DAY - OCT 16!

Show your boss just how special they really are!

Many Gifts & Arrangements To Choose From

*Minnick Florist*  
(304) 462-7376  
*Glenville*

## Homecoming Schedule

Monday	8pm-10pm	Comedy Improv	HSC
Tuesday	6pm-7pm	Water Balloon Throwing Contest	Pickens Hall Courtyard
	8pm-10pm	Bingo	HSC
	10pm-12pm	Swimming Party	GSC Pool
Wednesday	6pm-8pm	Faculty vs. Students Volleyball Match	GSC gym
	8pm-10pm	Casino	Verona Maple
Thursday	4pm-6pm	Picnic	Amphitheater
	6:30 pm	Just Kidding	Art & Music Auditorium
Friday	7:30pm	Pep Rally	Amphitheater

## Library Features New Periodical

Car buffs will want to look at a new magazine in the library: Car & Driver. Afficionados of the magazine already know that the columns by William Jeanes, Patrick Bedard, and Brock Yates are so perceptive, current, and delightfully written that these guys must have all been English majors. A typical Yates column will be peppered with memorable phrases. When he first sees the Viper he says "it's a kneewobbler." It has "lip-stretching acceleration" and "braking in the Hand-of-God category." You'll run for your Webster, as well as your

Strunk after enjoying his column. And the color photos of Lamborghinis, Porsches, the Bonneville SSEi, Lexus SC400 and the new Corvette will leave you breathless, or at least consummately envious.

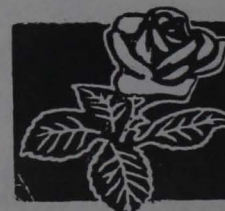
Users of the NewsBank Indexes will be pleased to see that the indexes have been conveniently located next to the NewsBank microfiche (at the end of Copying Machine Row).

Next Week: We'll take a look at another new magazine and talk about CD-ROM in the library.

## Are You Overweight, Lonely, Depressed? Do You Need Advice?

When you want to share your special concerns but fear judgement from friends or relatives, write Under the Rose, "an absolutely confidential correspondence service for women." Our national network of sympathetic "listeners" will write you back immediately with tried and true suggestions for coping. Send your letter and \$5.00 (processing and postage) to UNDER THE ROSE, P.O. Box 2365, Mountain Lake Park, Maryland 21550-0765.

We've been there and we care.



*Under the Rose*



# PIONEER SPORTS

by Billy Hurst

## Pioneers Stand at 1-3-1 After Loss to West Liberty

The Glenville State Pioneers dropped their third straight game to West Liberty Saturday 35-33. "Nobody we've played has beaten us," stated Head Coach Rich Rodriguez "we keep doing it to ourselves." "Special teams killed us and we laid the ball on the ground too much." Glenville fumbled six times and lost the ball four times. West Liberty kicked off GSC quarterback Jed Drenning twice, returning one interception for a touchdown in the second quarter. Damon Brooks returned a punt 77 yards for another Hilltopper touchdown. West Liberty, however, only had 258 total offense as compared to Glenville's 412. The loss drops Glenville to 1-3-1 and 0-3 in the WVIAC. West Liberty is 3-2 on the year and 2-2 in the conference. The Pioneers look to upset fifth ranked Wingate (NC) next week in a non-conference matchup at Pioneer Stadium.

Team	Score by Quarters	Final Score
Glenville	14 14 7 0	35
West Liberty	6 12 7 8	33

Scoring	Quarter
GSC Simpson 25yd. pass from Drenning, kick failed	1
WLSC Nutter 9 yd. run, Story kick	1
WLSC McLaughlin 36 yd. run, Story kick	1
GSC Blanding 85 yd. run, pass failed	2
WLSC Morris 15 yd. interception, Story kick	2
WLSC Brooks 77 yd. punt return, Story kick	2
GSC George 6 yd. pass from Drenning, pass failed	2
WLSC McLaughlin 2 yd. run, Story kick	3
GSC George 7 yd. pass from Drenning, Weems kick	3
GSC Haddox 1 yd. run, Swaim 3yd pass to Haddox	4

## Ladies Volleyball Team Matures

The Lady Pioneer volleyball team "grew up" last week according to Coach Kenny Osbourne. The Pioneers defeated Alderson Broaddus last week and lost to West Virginia Wesleyan. "I've been commenting on how young and immature we looked this season, but Tuesday we beat AB, one of the toughest teams in the conference. We really took a big step forward as a program" Coach Osbourne stated. The Lady Pioneers won three matches to one 10-15 (AB), then came back 15-9, 16-14, and 15-9. "We were down 11-2 but made a great team effort and came back in the third match." Wednesday's loss to Wesleyan was

"within reach" but Coach Osbourne is not disappointed with the team's performance. "Weslyan, personnel wise, is probably the best team in the conference and we had our chance with them." The lady netters dropped the match with Wesleyan in three matches 10-15, 8-15, and 11-15.

"This week we realized we can play," stated Coach Osbourne. "We play U.C. (University of Charleston) Wednesday and we rest until the 17th of October, so we will have time to work on some new things and get healthy. I'm definitely looking forward to the second half of the season."

### Pool Hours (P.E. Building)

3p.m. - 4p.m. M-Th

7p.m. - 8p.m. M-Th

### Game Room Hours (Heflin Center)

3p.m. - 10p.m. M-F

5p.m. - 10p.m. Weekends

## Cross Country Teams Look Good Against Big School Talent

It was cold and rainy, Saturday as the Glenville State Cross Country teams traveled to Rio Grande (OH) to compete in the Rio Grande Invitational Meet. "We got our tail's kicked," commented Coach Jesse Skiles with a grin "but not because we didn't run well, we just were running over our heads." The men were running against Morehead State (KY), and NCAA Division I AA school, and Rio Grande, a top ranked NAIA school. The women ran against Ohio State, an NCAA Division I AA school, as well as Rio Grande which is highly ranked in the NAIA for the women as well. Four men ran their best times ever Saturday but were simply overpowered. The women made a strong showing as well, Tracy White running 12th at the two mile mark, kicked in the afterburners to finish sixth of 18 runners. Tim Smith finished seventh of 28 runners. "I was really impressed with the way the teams looked against these bigger schools, they make a good showing against some real talent" stated Coach Skiles. The men's record went to 16 - 7 overall and 13 - 2 in the conference. The women are at an impressive 17 - 4 overall record and 13 - 1 in the conference. Both teams are ranked second in the WVIAC behind Wheeling Jesuit and West Virginia Wesleyan respectively. The cross country teams gear up for their home meet Friday at Cedar Creek State Park. The women run 3:00 and the men run at 3:45.

## Aerobics Heads Year-Long Fitness Programs

The Intramural Program is conducting a series of year-long individual fitness activities open to all students, faculty, and staff. These activities are aerobics, weight training, jogging, and swimming.

To date, the popular activity is aerobics. An energetic group of 30-40 members meets Monday-Thursday from 4:45p.m. - 5:30p.m. in the Mat Room of the Physical Education Building. Students are currently aerobicizing

to the high energy sounds of the 1960's and 70's. The instructor is Stephanie Hunt.

In conjunction with aerobics, weight lifting is being offered from 4:45p.m. to 6:00p.m. Monday-Thursday. Those who enjoy the physical challenges of Universal and Free Weights are encouraged to participate.

Lap swimming is an Intramural activity that is available

between the hours of 4:00p.m. to 5:00p.m. in the swimming pool of the Physical Education Building. Competitive lap swimming is open to all individuals with a winner being determined by the greatest distance covered each semester.

To gain more information on the year-long activities or to enter the individual competitions of swimming and/or jogging, contact Coach Harold at extension 282.

### GSC INTRAMURALS

#### UPCOMING VOLLEYBALL SCHEDULE

DATE	GAME TIME	COURT 1	COURT 2
WED., OCT. 9	7:00 P.M. 8:00 P.M. 9:00 P.M.	PICKENS LADIES vs. ADIDAS TCB vs. KAMIKAZE II NAKEDS vs. NADS	LONGDUCKS vs. UBA GLENVILLE HEAT III vs. CRU TKE vs. BREW CREW
SUN., OCT. 13	7:00 P.M. 8:00 P.M.	#2 SEED MEN vs. #3 SEED MEN #1 SEED MEN vs. #4 SEED MEN	#2 SEED WOMEN vs. #3 SEED WOMEN #1 SEED WOMEN vs. #4 SEED WOMEN
MON., OCT. 14	7:00 P.M. 8:00 P.M.	WOMEN'S FINALS MEN'S FINALS	

### GSC Intramurals

#### Team Standings as of Wednesday, October 2

Women		
	Record	Points
1. Glenville Heat III	6-1	171
2. Pickens Ladies	2-5	143
3. BFH	7-0	128
4. Adidas	3-4	119
5. Townies	3-4	119
6. CRU	0-7	97
Men		
1. Longducks	7-2	204
2. Nakeds	2-5	177
3. Flight Crew	8-1	156
4. Kamikaze II	6-3	145
5. Legends	7-2	136
6. TCB	5-3	134
7. Bulls	3-5	127
8. NADS	2-7	90
9. TKE	3-5	83
10. Underdogs	2-7	79
11. UBA	2-6	
12. Brew Crew	0-7	



# Arts & Entertainment

## Traveling Mask Exhibit 30 Years in Making

by Anthony Riffe

A mask exhibit called Ceremonial Faces: The Magic of Masks is coming to Glenville State. The exhibit is the personal collection of Mr. Rick Tubesing. Tubesing is the Library Director, and an adjunct associate professor of anthropology here at Glenville State. The exhibit is due to be displayed between Oct. 7th and Oct. 31st. The masks can be viewed in the Fine Arts Gallery

from 10:00a.m. to 2:00p.m. on Monday through Friday.

Tubesing's collection has been seen at the University of Kentucky, and the College of the Southwest in New Mexico before finally making its way to Glenville. It took Tubesing over 30 years to compile his vast collection. They have come from such exotic places

as Japanese temples in the Far East to the northern parts of Mexico. The collection consists of several different types of masks ranging from the religious oriented to the hideous or humorous carnival faces.

During the course of the interview Tubesing explained that the masks were worn for many different reasons such as

philosophical, religious, theatre, and for social commentary, but he added the biggest reason masks were worn was for strictly old fashioned fun and entertainment. Tubesing also explained that these masks were worn to display a living part of culture. He said, "Art is not the main reason for the masks, but mainly they were made for cultural

and social purposes."

Informal lecture tours will be given before the theatre performances presented in October, and for classes and groups by appointment. If groups or classes wish to view the display they should contact Rick Tubesing at the Glenville State Library for appointments.

## Entertainment Survey

by David Graham

In order for me to write about entertainment at GSC, I would like to be able to get a better idea of the way GSC thinks about entertainment. Here is a list of questions that I would like for students and faculty alike to fill out and return to either the Mercury office or the Language Division (a box will be there for you to drop off your survey) and I will tabulate the results and present them to you. Thank you for taking the time to complete this survey.

Please do not place your name anywhere on the survey. Either fill out the answer or place a check.

Male ☐ Female ☐ Age

1. In your life, how important is entertainment on a scale of 1 to 10 (10 being highest)?
2. How many movies did you see this summer?
3. What was your favorite movie of the summer?
4. How much money do you budget for entertainment a month?
5. How many home videos do you watch a week?
6. What awards shows did you watch?
 

Academy Awards	<input type="checkbox"/>
Emmy Awards	<input type="checkbox"/>
Tony Awards	<input type="checkbox"/>
Grammy Awards	<input type="checkbox"/>
MTV Music Awards	<input type="checkbox"/>
Other	<input type="text"/>
7. How many hours of TV do you watch a week?
8. How many books do you read for pleasure a month?
9. Do you have Cable? ☐ yes ☐ no
10. If you had more time would you see more movies? ☐ yes ☐ no
11. What is your favorite type of music?
12. What is your favorite type of movie?
13. How many plays do you see each year?
14. Do you go to see the plays on campus?
15. Who is your favorite male movie star?
16. Who is your favorite female movie star?
17. Do you own a CD player? ☐ yes ☐ no
18. What is your favorite TV show?

## Skiles Planning Variety of Activities To Rejuvenate Campus Calendar

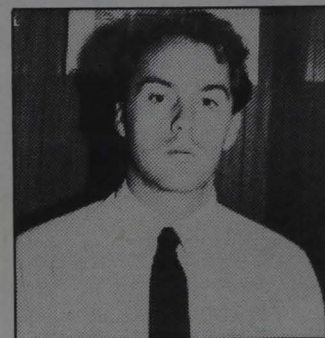
by Missy Booth

Plans are underway to supply Glenville State College with new activities for the 1991-1992 school year.

Under the supervision of Jesse Skiles, Director of Activities, the Pioneer Programming Board (PPB), a student run organization, will be sponsoring a series of trips to neighboring cities.

The outings will include a trip to Pittsburgh, PA, for game one of the National League Championships on Tuesday, October 8 and an Amy Grant concert scheduled for Sat., Oct. 12 in Morgantown, WV.

Additional concerts, transportation to away GSC games, shopping trips, ski holidays and NFL games are being planned for the fall semester.



Skiles plans group activities.

Skiles is hoping to add trips to NHL & NBA games to the second semester agenda.

With PPB president, Debbie Russell, junior, the organization is working as Skiles said, "to ensure that there will always be something available for students."

Skiles, who is attempting

photo by Tina Messenger

to rejuvenate the activities schedule which has been operating since the 1985-86 school year said, "I'm very proud of the work the students in the organization have done to put the trips together."

Skiles also has fundraisers in the planning stage in order to offer discounts toward trip expenses. Currently, the fees include the cost of the ticket, insurance (approximately \$250) and a donation toward gas.

Students as well as faculty and staff are invited to take part.

Trips and dates will be posted around campus. Sign ups will be in Skiles' office located near the snack bar in the Heflin Center. Seats are filled on a first come first serve basis.

## Quilters Dedicated to Preserving Art

Cabin Creek Quilts cooperative Association, Inc. will celebrate the dedication of its historic new headquarters the weekend of October 17-18-19. Along with displays and demonstration of the renowned Cabin Creek Quilters will be displays and demonstrations by representatives of The Freedom Quilting Bee of Alberta, Alabama, and Sioux Quilters from the Standing Rock Reservation in North Dakota.

These groups will jointly celebrate the event and works of their endangered groups.

The event is free and open to the public. Cabin Creek Quilts Headquarters will be in the 1838 Old Pink House in the Malden Historic District one mile from the entrance to the West Virginia Turnpike at Charleston. The location will feature a gallery, education studio, and quilt supply

shop. For more information on the dedication weekend or campaign to protect American quilters from imported quilts in traditional American patterns write or call James Thibault at Cabin Creek Quilts Cooperative, Malden, WV 25306. 304-925-9499

## HOMEcoming BANNER CONTEST

All groups must fill out and return the participation form to the Office of Student Services by Thursday, Oct. 24, 1991 at 12:00 noon. This is also the deadline to have your banner approved. The theme for Homecoming 1991 is "A Touch of Class."



answer to last week's puzzle

DAIT ALFAS VIDA  
AHME ROUSE ANON  
ROPE ONLOCATION  
BYOMSELF NITRO  
VINERS AKC  
STEED SPITANES  
PARR ENSENADA  
ALL HAVENOT TIS  
DISMAYED PUNS  
EPHEMERAL ARRAY  
AMS SOPHIA  
MARNE STREAMLET  
SQUAREMEAL AGRA  
GUNS MERIT TAIL  
RATA PENNS ESNE

# Potpourri

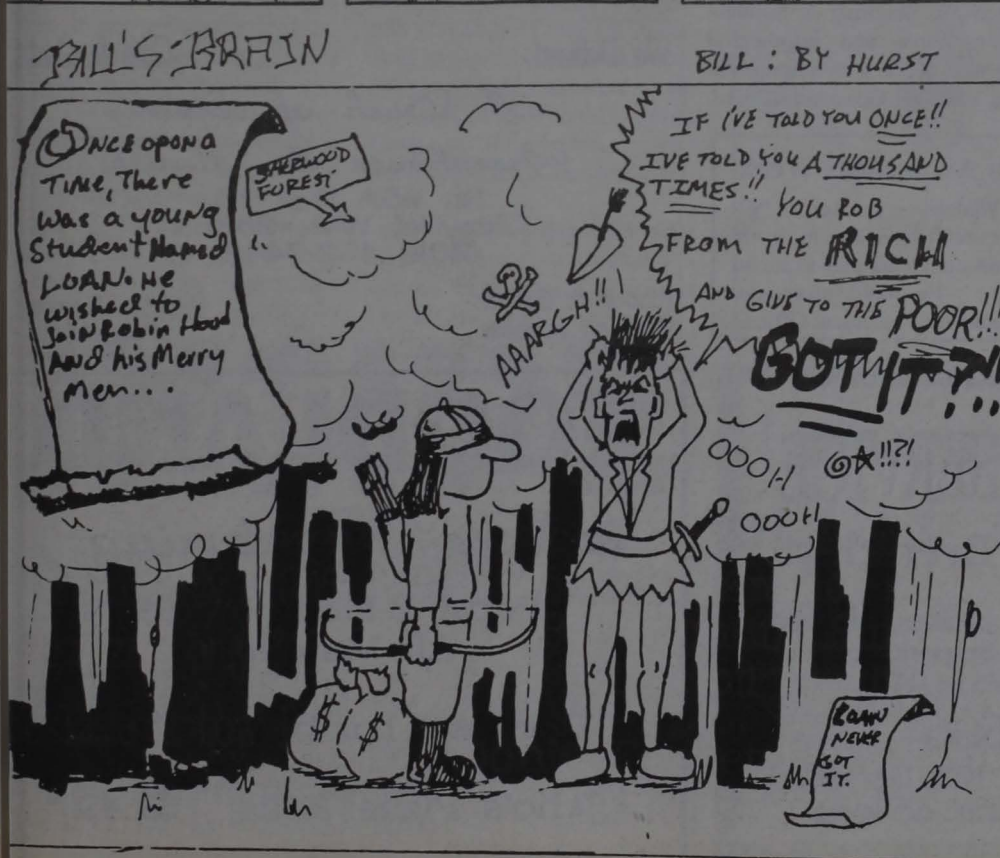
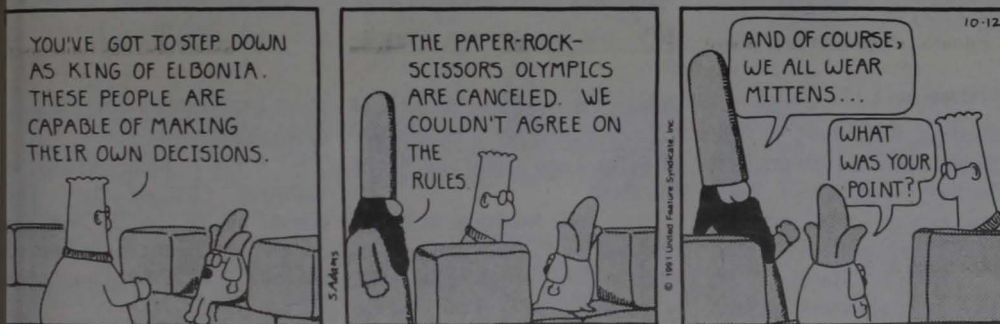
## GARFIELD® by Jim Davis



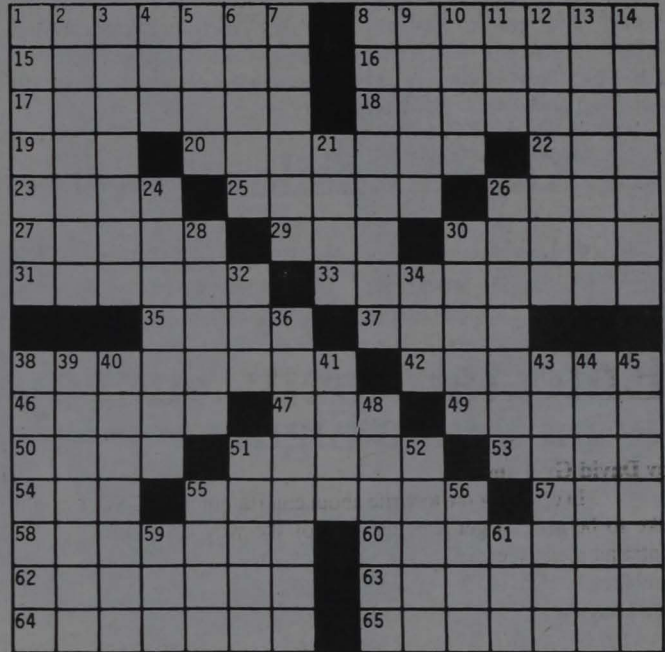
## PEANUTS® by Charles M. Shultz



## DILBERT® by Scott Adams



## collegiate crossword



© Edward Julius Collegiate CW8829

### ACROSS

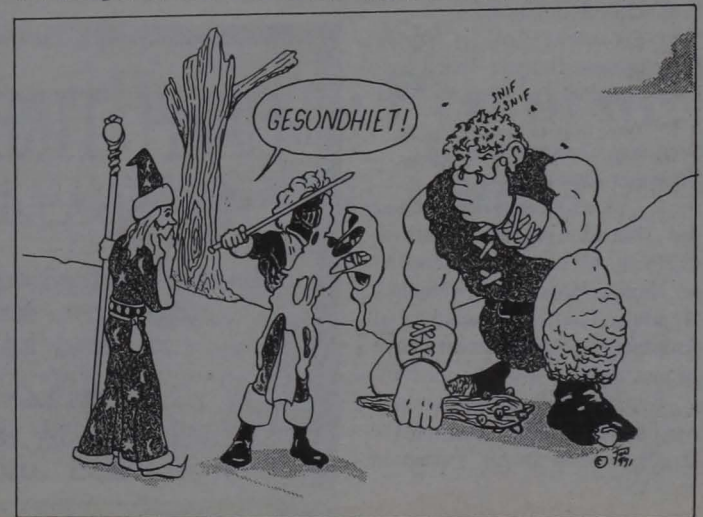
- 1 Lists of names
- 8 Tells
- 15 Level of authority
- 16 Scholarly
- 17 Capacity to endure
- 18 Gruesome
- 19 Male cat
- 20 Fatty
- 22 Continent (abbr.)
- 23 Shortened form (abbr.)
- 25 Popeye's girlfriend
- 26 To be: Fr.
- 27 Type of race
- 29 — jump
- 30 The — (Mt. range)
- 31 Mine-boring tool
- 33 Belonging to The Hoosier State
- 35 Cultivate
- 37 Precious stones
- 38 Apportioned
- 42 Slow down
- 46 Comedienne Ann —
- 47 Out of: Ger.
- 49 Olympics entrant
- 50 Mr. Maverick
- 51 French states

- 53 Vena —
- 54 Mr. Gershwin
- 55 City in Kentucky
- 57 Letters engraved on a tombstone
- 58 All together (2 wds.) relation
- 60 Carpentry joint
- 62 Not one nor the other
- 63 Famous reindeer
- 64 Delirium —
- 65 Bird dogs

### DOWN

- 1 Begin again
- 2 Black Tuesday's month
- 3 Shuffling gait
- 4 Egyptian god
- 5 Charles Lamb's pen name
- 6 Musical piece
- 7 — pace
- 8 Taking away
- 9 Expunge
- 10 Publisher Henry R. —
- 11 Society of dentists
- 12 Native of Lhasa
- 13 Part of ancient Italy
- 14 Female prophet
- 21 Maize bread
- 24 Harmony of
- 26 Rubber band
- 28 Site of 1945 conference
- 30 Directed toward
- 32 Prefix for withstanding
- 34 German article
- 36 Endures
- 38 Completely
- 39 Student, e.g.
- 40 City in Wyoming
- 41 Double
- 43 Greed
- 44 Editor
- 45 Dealers in cloth
- 48 Mailing necessities
- 51 City in Germany
- 52 Nighttime noise
- 55 Tennis great
- 56 "Darn it!"
- 59 Prefix: air
- 61 Dynamite

## NERVE DAMAGE by Jon CRINER





# State Continues To Improve Travel Across WV Bridges

Governor Gaston Caperton has announced the opening of bids for three bridge replacements and overlays on spans in three additional counties.

"We are committed to providing West Virginia motorists the best and safest facilities possible," the governor said, noting that the Division of Highways had replaced about one-tenth of all its

bridges in the last four years.

A Gilmer County replacement will be bid October 1, while the remaining projects are scheduled for October 22.

Prestressed concrete beams will be used to replace the 319-foot Truebada Bridge carrying Gilmer County 30 over Little Kanawha River west of County 30/3.

Concrete beams will also replace the Maitland Arch carrying McDowell County 52/7 over Elkhorn Creek south of US 52 and the Kegley Timber bridge carrying Mercer County 19/15 over the N&W Railroad east of County 10/7.

Latex-modified concrete overlay will be placed on bridges in Cabell, Fayette and Harrison counties. The Malcolm Springs

overpass carries Cabell County 60/28 over I-64 west of the Milton interchange. In the Oak Hill area of Fayette County, the Main Street Bridge carries WV 16 over US 19 south of County 17, the Summerlee Road Bridge carries County 38 over US 19 just south of County 34/8 and a third bridge carries WV 61 over Loop Creek north of County 61/17. In Harrison County, the

Limestone Precast Bridge carries US 19 over the river of the same name south of County 9/8, while the McAlpin overpass carries County 73/73 over I-79 at Exit 125, the Shinnston interchange.

A Taylor county project calls for correction, including resurfacing, piling and guardrail on the Pruntytown Side on US 50 east of County 50/22.

## Tau Kappa Epsilon

All men interested in joining TKE should attend the Sunday, October 13th meeting at 8:00 p.m. in the basement of L.B.H. Congratulations to Amy

Bogges, the 1991-92 TKE Sweetheart. Thanks for supporting us Amy and Good Luck in the Milton Pumpkin Festival this weekend.

## Sigma Sigma Sigma

Tri-Sigma sorority would like to invite all interested females to our tie-dye party on Oct. 8 at 5:30. Keep watching for posters to find out where it will be!

Congratulations to all of our new lil' sisters!! We hope you had a fun week because your big sisters sure did!

Here's a special mention

of Delta Alpha's officers for this Fall: President - Cathy Harbert V. Pres - April Hartshorn Secretary - Jill Harman Treasurer - Annette Howard

Education- Michelle Marshall Mem/Rush - Amber Holbert

And as always, Good Luck to all of GSC's teams this week!

## Delta Zeta

The Theta Xi Chapter would like to congratulate our two new Initaites.

- 1)Jennifer Bennette
- 2)Beth Koballa

We are still thinking about our new pledges. You are doing a great job as pledges.

## SAS

The Student Accounting Society elected officers for the new year:

President-Sami Kincaid Vice-President of Chapter Development-Belinda Roach Vice-President of Projects-Ada Lewis Secretary-Christine Spencer Treasurer-Don Freidhoff

SAS meets every 1st and 3rd Thursday of each month at 12:45 in AB100. All interested accounting majors are welcome. A variety of professional and social activities for the Fall semester have been scheduled.

Halloween is almost here! Start thinking about a costume for the Halloween Dance sponsored by SAS!

### Schedule of Meetings with North Central Accreditation Team

#### Sunday, October 13, 1991

5:00-6:00 Reception for Team (by invitation)  
6:00-7:00 Dinner (by invitation)  
7:00-8:00 Board of Advisors

President's Home  
Verona Maple Room  
Conference Room, HSC

#### Monday, October 14, 1991

8:00-10:00 President Simmons and Administrative Staff  
10:30-11:30 Classified Staff  
5:00-6:00 Alumni and Community Representatives

Conference Room, HSC  
Verona Maple Room  
Verona Maple Room

#### Tuesday, October 15, 1991

8:15-9:15 Division Chairpersons  
10:00-11:00 Open Meeting  
12:30-1:30 Faculty  
3:00-4:00 Students

Verona Maple Room  
Verona Maple Room  
Verona Maple Room  
Verona Maple Room

cont. from pg. 1

is the editor of the 1991-92 GSC yearbook. She is a 1988 graduate of Charleston High School. She is the daughter of Lloyd and Lona Skiles of Charleston.

Dottie Starcher, of Elizabeth, is the sophomore princess. Starcher is majoring in business administration and information systems. She is a member of Phi Beta Lambda, Governing Board,

Pioneer Programming Board, and Literary Society. She is the daughter of Bernard and Kathy Starcher of Elizabeth.

Julie Runbach, freshman princess, is a 1990 graduate of Braxton County High School. She is majoring in general studies.

Rumbach is the daughter of Wanda Grass of Burnsville.

GSC homecoming is Saturday, October 26. The coronation of queen and the presentation of the court will be held at 11 a.m. in the amphitheatre.

### National Collegiate Alcohol Awareness Week

National Collegiate Alcohol Awareness Week is October 14-19, 1991. A seminar on Acquaintance Rape and Alcohol Misuse will be presented

on Wednesday, October 16, 1991 from 6:00 to 8:00 p.m. in the Ballroom. Please plan to attend.

For more information contact the Placement Office.

## CASH TIRE SERVICE

### Tire Specials Everyday!

Services performed: brakes, shocks, alignment, state inspection, oil and lube (\$15.95)

462-5606

Location: on the hill between Foodland and the college

### We Deliver!

### Gifts & Crafts

*A Dash of Spice  
Greenhouse & Florist*

Rt. 65A Box 16  
Glenville, WV 26351  
(304) 462-7442

Ribbon & Baskets  
Wedding Supplies

Wire Service  
Available

## FOODLAND

### Now Featuring:

Pepsi 2-Liters - \$.99  
All Varieties

Doritos 11oz-bag - \$1.99

Jeno's Pizza Rolls - \$1.49