



Dr. I.D. Talbott, Director of Community Services and Continuing Education.

Glenville State Hosts Trip to Germany and Czechoslovakia

by Becky Richards

How would you like to be able to visit foreign lands and receive college credit in the process? This is very possible for any Glenville State College students who are interested in traveling to Germany and Czechoslovakia.

This trip from June 11-22 gives you an opportunity to receive three hours college credit in History or Social Sciences. These students wishing to receive credit must only write a paper after traveling to these far away lands. This historical and culture program not only offers a great learning experience but a chance to live life as people in these countries would actually do. Some of the places that will be visited include: cathedrals, World War II sites, museums, and remains of the Berlin Wall. There are also optional visits to Poland, train trips to Dresden, Weimar, and Bohemia.

Investing in an adventure of travel and education is a smart

choice. You should take into consideration for the price of \$2079, you are not only getting to be a part of a terrific learning experience but you also get a great summer vacation in the process. This cost includes all intercity transportation, lodging, breakfasts, suppers and regularly scheduled tours. It does not include intracity transportation or admission to museums and other attractions.

Are you still not sure if this is for you? Take Dr. Talbott's advice and invest in something that can be fun and exciting. Although the trip is a lot of hard work it also is a lot of fun.

Does this look like the way you would like to spend part of your summer, then get your VISA and passport ready. Don't wait a minute longer, enrollment is limited. Dr. Talbott is ready to answer any questions you might have and to help you register before February 10, 1992 with a \$700 deposit.

THE GLENVILLE MERCURY

Glenville State College January 22, 1992 Volume 63 Number 12

Three Glenville State students die in tragic accident

Memorial Service Held at Trinity United Methodist for Bryan, Garrett, and Krouse

by Tracey Moats

A memorial service was held at 2 p.m. on Monday, January 13 in the Trinity United Methodist Church in Glenville, to honor three Glenville State College students, Christopher K. Bryan, Michael A. Garrett, and Brandon G. Krouse, who died in a tragic automobile accident on Wednesday, January 8.

According to officials, the accident occurred at approximately 9:45 p.m. The vehicle, a Chevette driven by Krouse, was traveling West on Route 33 on Camden Hill when it apparently dropped off the curb and in an attempt to recover the vehicle, went left of center, striking an oil tanker head-on. The driver of the oil tanker was treated for back injuries.

Bryan, Garrett, and Krouse were residents of the Pickens Hall Dormitory on the Glenville State College campus. Bryan was a 20-year-old sophomore from Elkins, West Virginia majoring in chemistry. Garrett was a 20-year-old sophomore from Oak Hill, West Virginia majoring in computer science, and Krouse was a 22-year-old senior from Summersville, West Virginia majoring in accounting.

The memorial service in their honor was given by Rev. Mike Amory, campus minister to Glenville State College for the Wesley Foundation.

Concerning the services, Dr. A.T. Billips, Dean of Student Services for the college, said "A memorial service by its very nature is religious and offers hope (to those living) of a life beyond this earthly existence. It does this

"It is gratifying that we have the opportunity to express our grief as a college community in a celebration of life both at this time and in any future times at Trinity United Methodist Church."

-Dr. A. T. Billips

through the message of the resurrection. I felt that Rev. Mike Amory who was assigned by the United Methodist Church as campus pastor associated with the Wesley Foundation, was right on target in the way he conducted this memorial service for Christopher, Michael, and Brandon. It was a beautiful mixture of song, scripture, and eulogy in the setting of a house of worship. It is gratifying that we have the opportunity to express our grief as a college community in a celebration of life both at this time and in any future times at Trinity United Methodist Church."

Amory sang "The Hymn of Promise" which was written by native West Virginian, Natalie Sleeth. Approximately 100 people attended the memorial to give their respects through song, scripture, and prayer to these three young men. Near the end of the service, Amory commented, "All three men were an asset to Glenville State College."

Flowers were sent to each funeral and a spray of flowers were also sent to the memorial service in behalf of the students of Glenville State College from Student Congress.

The funeral of Christopher K. Bryan was held Saturday, January 11 at 10 a.m. at St. Brendan's Catholic Church in Elkins. Michael A. Garrett's funeral was held Sunday, January 12 at 1 p.m. at the Tyree Funeral Home in Oak Hill, and the funeral of Brandon G. Krouse was held Monday, January 13 at 10 a.m. at the Gholaon Funeral Home in McLeansboro, Illinois.

INSIDE what's

Spirit Contest	p.4
Pioneer Sports	p.5
Cultural Calender	p.6

Pizza Hut Managed by GSC Alumnus

The Glenville community is excited about the new Pizza Hut that opened January 19 on the corner of 2nd West Main St. The new Pizza Hut, under the management of Glenville State Alumnus, Mike Miller, will be offering many great deals to the faculty and students of Glenville State College.

Manager Mike Miller, who graduated in 1990 and was a

member of Lambda Chi Alpha at GSC, feels very positive about the success of the new franchise. When asked why he felt owner Tom Stanley wanted to open the Pizza Hut in Glenville he said, "It was strictly business." We also asked Rodney Hogan, area supervisor how he felt about the opening of the restaurant, Hogan commented, "It's just a good

market. Most of our other Pizza Huts are in small towns also." Hogan also had this to say about serving beer in the restaurant, "I know it's a college town, but we will not have an atmosphere as a bar. It's a family restaurant." Miller also commented on the subject by adding, "Our beer is to compliment our pizza not our pizza complimenting our beer."

You can look for a lot of great deals at the new Pizza Hut after its opening. Students and faculty will enjoy a special 10 percent discount on their lunch on Monday through Friday with the showing of their faculty card or student I.D. Also, during dinner hours from 4 p.m. to closing you can get a small thin pizza with one topping for \$1.79 plus \$.80 for

each additional topping. On Wednesday from 4 p.m. till closing you can get a large pizza with one topping for \$4.99 plus \$1.00 for each additional topping.

Miller also wanted area organizations to know he would like to work with them on their fund raisers. You can contact Mike Miller at the Pizza Hut at 462-8800.

New Buses Purchased for College-Sponsored Activities

If you are tired of riding the same out-of-date bus to school functions, this article is for you!

GSC has just purchased two new buses to be used for transportation for all regular scheduled college activities. Each bus will accommodate 25 passengers. The buses are equipped with large diesel engines, automatic transmission, cruise control

overhead luggage space; and for those extremely hot days, they have the comfort of air conditioning in the front and back.

These buses have been purchased for many activities, such as: athletic and band events, the trip to the Spring Percussion Ensemble, the summer Elderhostle groups, and any trips sponsored by the Student Activity

Board in the Heslin Center. They will also be used for the Japanese exchange students' shopping excursions and other necessary trips. Drivers will be provided.

The buses were purchased from Roher Bus Service in Pennsylvania. They were purchased on a five year lease at the end of which they pay \$1, and the buses belong to the school.

The Ford Chassis Cab was manufactured by Champion Corporation. The price of each bus was \$42,000. One bus will be paid for through Alumni Foundation Funds, the other, by regular college funds.

The choice of these particular buses was made by placing bids. The school interviewed seven or eight

manufacturing companies, and looked at their choices of transportation. They put out bids on the buses and wrote up specifications so they could bid on those that would fit the needs of the Ford Chassis, so they were equal from that stand point.

Get ready for a more comfortable and stylish ride to those school functions.

Letter to the Editor Friends Question Administrative Decision

Dear Editor:

We would like to express our dissatisfaction with regard to how Glenville State College handled the deaths of our fellow classmates who were recently killed in a tragic automobile accident.

The three involved were Brandon Krouse, 22; Michael Garrett, 20; and Christopher Bryan, 20. To attend all three funerals, approximately 1,500 miles

had to be covered as was done by many. Why? Because Glenville State College refused to have on-campus memorial services. According to a senior member of the administrative staff, on-campus memorial services were "deemed unnecessary" and felt that those closest to the deceased should pay their respects by attending each separate service.

Why then was the death

of Jay Hill treated so differently? We recognize the loss and express our sympathy to the family and loved ones of Jay Hill, but we have also lost three best friends and are requesting an answer to the question: Why were there memorial services for Jay Hill, a student athlete and not services for Brandon, Mike and Chris who were just ordinary students? Does this mean that student athletes'

lives are considered more important for just that reason? If this is the precedent being set then Glenville State College is making a very insensitive statement and it is making them look very bad in many eyes.

When proposed the question of why a student athlete is given a memorial service and three non-athletes aren't, a senior administrative official explained that due to a precedent set in 1971 when athletes of Marshall University were killed in a plane crash - athletes are given memorial services on campus. That was 21 years ago. Times have changed and this given precedent has portrayed a student athlete as being more important than the ordinary students. This isn't right and measures should be taken to correct this discrimination.

Glenville State College claimed in the *Charleston Gazette* dated January 10 that they were planning memorial services on campus but plans were incomplete. This is completely false. As of Thursday, January 9, after continuous meetings by Student Congress with head officials - the administrators set their foot down with an answer of no to the idea of having on-campus memorial

services. Therefore, off-campus memorial services were arranged.

The only tribute made by Glenville State College to the grieving student body was to allow the students to attend the off-campus memorial service at the expense of not attending class. Not only did Glenville State College not acknowledge the deaths with an on-campus memorial service - they went so far as not to even cancel classes for the off-campus memorial service. In our eyes, this shows how much Glenville State College cares about its "ordinary" students.

The Gang
April Ludle
Michael D. McKibben
Steven L. Clark
Joni K. Rittenhouse
Sandra D. Hubbard
Allen Boyce Jr.
Angela Cox
Matthew Allen
Jackie Carter
Mitch Carpenter
Tila Bailey
Rob Dean
Alice Bragg
Sheila Hart
Dana E. Spade
Cheryl A. Pringle
Shaundell Creak
Denise Davis

Former GSC Student Dies in Auto Accident

SPENCER- Joel R. (Nick) Jarvis II, 30 of Spencer died Thursday, Jan. 2, 1992 of injuries received in a two-car collision on W.Va. 2 in Mason County, according to Deputy N.E. Benson, Mason County Sheriff's Department.

He was a Protestant. He was a Marine Corps veteran, member of W.Va. National Guard Company A 1092, Gassaway, a former student of Glenville State College, and was employed by Pinkerton Security.

Surviving: wife Robin Miller Jarvis, mother Ethel Lee Morris Jarvis of Frametown, maternal grandmother. Mary

Dickey of Akron, Ohio, brothers, Charles of Leavittsburg, Ohio Damon of Hallandale, Fla.; sisters, Vicky Greathouse of Annamoriah, Rozanna Ferry of Leavittsburg,

Ohio.

He was preceded in death by his father Joel R. Jarvis. Burial was in the Moore Fork Cemetery, Clay.

GIL-CO PHARMACY

32 E. Main Street
462-8300

Health and Beauty Aids
Clove Drug Member
Film Developing

Mon-Fri 8:30-6:30 Saturday 8:30-2:00

CAMPUS KIBITZ

What was your New Year's resolution? Have you been able to keep it so far?

photos by Heather Messenger

by Tracey Moats



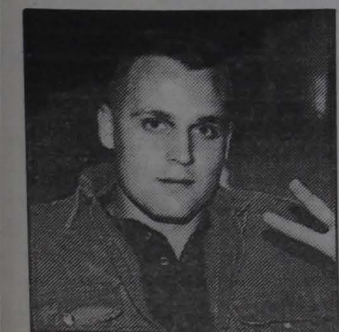
NAME: Tricia Stout
RANK: senior
MAJOR: Business Management
HOMETOWN: Jane Lew, WV
ANSWER: "To go away with my friends for spring break since I will be graduating. Yes, I am starting to make plans."

NAME: Brian Creamer
RANK: junior
MAJOR: Sports Management
HOMETOWN: Lumberport, WV
ANSWER: "To get better grades so I won't get kicked out of college. Yes, I even bought books this semester."



NAME: Tina Mann
RANK: sophomore
MAJOR: Elementary Education
HOMETOWN: White Sulphur Springs, WV
ANSWER: "My resolution is to make a 3.0. I've just started, I've made it to all classes, and have kept my homework up so far."

NAME: Dee Frame
RANK: sophomore
MAJOR: Secretarial Science
HOMETOWN: Sand Fork, WV
ANSWER: "To lose twenty pounds. I'm working on it, I've lost two pounds."



NAME: Mark Miller
RANK: senior
MAJOR: Elementary Education
HOMETOWN: Charleston, WV
ANSWER: "To find a clean, wholesome woman. No, I haven't found her yet."

Anytime Is A Good Time To Make A Change

by Rebecca Hufford

Earlier this month, just like many of you, I made a New Year's resolution. What is it about the new year that makes us want to change? It's this time of year when everyone talks of turning over a new leaf. We'll exercise more, quit smoking, study harder, etc. What is it about January 1 that causes us to make such promises?

Perhaps the start of the new year makes us feel as if we are being given a fresh start. We look at the new year as a time to start over, a chance to make up for mistakes of the past.

Why do we make resolutions in the first place? Traditionally, those of us who make New Year's resolutions have been given a difficult time. Why is this? Resolutions are an indication that we are striving to become the best we can be. I can't see anything wrong with that.

Finally, resolutions don't only have to be made at the new year. Anytime is a good time, and if you've already broken yours, it's o.k. to start over now.

The Glenville State College Mercury Staff

Editor-in-Chief	Rebecca Hufford
Photographic Editor	Chris Derico
Sports Editor	Sean Davis
Layout	Jon Criner
	Kari McCallister
	Becky Richards
Circulation Manager	Angela Gill
Proofreaders	Kari McCallister
	Stephanie Phillips
Cartoonists	Jon Criner
	Billy Hurst
Art and Entertainment	Anthony Riffe
Advertising Manager	Karen Schoolcraft
Typists	Richard Clark
	Kim Sees
	Stephanie Phillips
Photographers	Chris Derico
	Heather Messenger
	Tina Messenger
	Howard Lanham
Reporters	Kari McCallister
	Becky Richards
	Tracey Moats
	Anthony Riffe
	Stephanie Phillips
Advisor	Lisa Booth

The Glenville Mercury is published weekly during the school year for \$6 per year. POSTMASTER: Send address changes to The Glenville Mercury, Box 207, Glenville State College, Glenville, WV 26351. Lisa Booth, 200 High Street, Glenville, WV 26351-1292; Rebecca Hufford, 200 High Street, Glenville, WV 26351-1292; Angela Gill, 200 High Street, Glenville, WV 26351-1292. Total number of copies-2000; Paid circulation-1690; Mail subscription-23; Total circulation-1713; Free distribution by mail-187; Total distribution-1900; Copies not distributed-50.

Student Congress Sponsors Spirit Contest

In attempts to encourage school spirit and enthusiasm, Student Congress is sponsoring a contest between all organizations. At every home basketball game that the cheerleaders cheer (this includes all male basketball games and selected Lady Pioneer games), organizations wishing to participate will sit as a group and participate in sideline chants and cheering, in a sportsman like way. At the conclusion of the game Student Congress will award a spirit certificate to the group scoring the most points for the entire game. Student Congress will keep a tally

on how many times each organization has been awarded a certificate and at the conclusion of the WVIAC Tournaments in Charleston (February 1992) the organization with the most wins will receive a cash prize in the amount of \$75 and a nice trophy. Guidelines for the contest are as follows:

1. Each organization will complete an entry form prior to the tip-off of each game. These will be located at a table set up by Congress on the floor below the gym. To be eligible to win a certificate, the form must be turned in before the

tip-off of the game.

2. Organizations may have as many or as few members participate as they wish (the more the better). However, each person must truly be a member of that organization. No combining of organizations is permitted.

3. Organizations are not required to attend any certain number of games, but if you are not there, you cannot win. The \$75 and the trophy will be awarded to the group with the most certificates regardless of how many that might be.

4. The organization must maintain

its spirit throughout the entire game. If no organization holds out for the whole game, no winner will be named.

5. Judges (faculty and staff) will be selected at random before each game. They will judge on four categories: enthusiasm, sportsmanship, participation and consistency. Twentyfive points may be awarded in each of the four categories. The organization with the most points at the end of game wins a certificate for that game.

6. The WVIAC Tournaments will be included in the race for the money. (Remember,

sportsmanship will be a factor in determining the winner of the certificates, the money, and the trophy).

It is the hope of the Glenville State College Student Congress that every organization will participate throughout the rest of the semester. We encourage you to get organized by catching on to the cheers, wearing organizational shirts, and really showing some school spirit!

If you have any questions, please contact any Student Congress officer or member.

Entrants Sought for Miss Ohio Valley Pageant

From now until February 14, 1992 entrants are being sought for the Miss Ohio Valley Pageant. This pageant is a preliminary to the Miss America Pageant. No entry fees or sponsorship are required.

An entrant must be a female between the ages of 17 and 26 and a high school graduate by Labor Day, single and a citizen of the United States. Pageants will

be held Saturday, March 7, 1992, at the Ravenswood High School Auditorium, Ravenswood, W.V., at 7:30 p.m.

Contestants will report to the auditorium at 1:00 p.m. on March 7 for rehearsal and judge's interviews. Entrant agrees to abide by all the rules of the Local, State, and National Miss America Pageants now in effect or as

announced hereafter. Contestants will be judged on evening gown, swimsuit, talent (2-3 minutes), and judge's interview. Entrant agrees that if she is selected as the winner of this pageant, she will not sign a management contract with any individual or corporation, and that she will not give any written or verbal endorsement of any mercantile commodity or

commercial organization, nor will she permit any photographs to be used in connection with any advertised commodity or service not associated with this contest, without the permission of the Miss America Pageant. Winners will proceed to the state pageant to be held in Clarksburg, WV, in June. The girl that wins the local pageant will receive a \$200

scholarship and will continue to seek scholarship awards at the West Virginia State Pageant, which will aid her in obtaining an education at the college of her choice.

For more information Contact: Ms. Lucy Harbert 106 Royal St. Ravenswood, W.V. 26164 Phone: (304) 273-9372 (Mon.-Fri. 9 to 5) Sat. 9-12.

Spring 1992 Student Teachers Announced



Row 1 (L to R): Janet Combs, Sandra Neil, Jane Hoffman, Jill Allen, Glenna West, Melissa Starcher, Tracey White, Dorlinda Smith, Leslie Willis, Susan Barker, Carla Brooks. Row 2: Valeria White, Shirley Hupp, Tammy Arnold, Teresa Britton, Linda Jarvis, Erica Merriman, Heather Vineyard, Kelli Swisher, Kristi Rogucki, Angie Vincent, Tina Staats. Row 3: Deborah Garrett, Sue Pelfrey, Peggy Weese, Shelly Hardman, Annette Withrow, Shelba Fountaine, Kim Husk, Molly Chapman, John Pitsenbarger, Melissa Seabolt. Row 4: Kim Dennison, Monica Cox, Dwayne Hicks, Molly Benwinkle, Alicia Callow, Susan Cosper, Vicki Jenkins, Michelle Jordan, Cathy Hoffman. Row 5: Jennifer Phares, Tammy Mace, Lee Kraus, Cheryl Foster, Rose Williams, Pat Morrison, Linda Blouir, Maryalice Maher, Danny Engel. Row 6: Cari Crigger, Cathy Harabert, Elizabeth Thibett, Scott Willhide, Margie Miller, Traci Stead, Melinda Gray, Deann Roberts. Row 7: Robert Cline, Pat Cahill, Tabby Logan, Darren Tom, Debbie Mazella, Scott Walker, Gail Balcourt, Alex O'Dell, Orland Allen, Denise Davis, Kim Issacs, Kris Harper

We Deliver!

Gifts & Crafts

A Dash of Spice
Greenhouse & Florist
Rt. 65A Box 16
Glenville, WV 26351
(304) 462-7442

Ribbon & Baskets
Wedding Supplies

Wire Service
Available



**Baptist
Campus
Ministries**

Semester Highlights!

- * BCM Winter Retreat
- * On-Campus HOMELESS PROJECT
- * and many interesting studies...

Watch for our column & our posters on campus! For more info, call: ext. 259 Room 302



PIONEER SPORTS

by Sean Davis

Pioneers 4-4 in WVIAC

photos by Howard Lanham

The GSC men's basketball team has opened the '92 season by winning eight of their first 14 games. They have compiled a mark of 4-4 in WVIAC.

Victories for the Pioneers include wins over Point Park 80-65, Salem-Teikyo 92-84, Geneva 80-70, Columbia Union 105-86, Wesleyan 83-79, AB 94-86, and WV State 98-96.

The six losses have come in Westminister 63-68, Concord 93-99 and 74-85, Columbia 68-97, Bluefield State 87-74, and Saturday night's loss to Salem-Teikyo 74-76. Uwone Jackson led the Pioneers with 19.

The men will be in action Wednesday, January 22 at WV Tech. On Monday, January 27, they travel to Fairmont to take on the Falcons. Both games tip off at 7 p.m.



Chuck Smith stretches for the score.

Shriver Leads Lady Pioneers

The GSC Lady Pioneer basketball team has opened the season with wins over Hope College 72-59, Bluefield State 96-65, AB 102-91, D&E 97-79, WV State 91-79, D&E 80-67, Concord 74, and WV State again 83-71.

The losses came to Shenandoah College, Pa. twice

67-91, 77-98, Marietta College 47-65, UC 67-89, and Wheeling 62-78.

On Saturday, the Lady Pioneers dropped their record to 8-6 overall with a loss to Salem-Teikyo. Their record in the conference stands at 4-4. June Shriver led the Lady Pioneers with

17 points.

The women will be on the road Wednesday at WV Tech. Game time is 5:15 p.m. On Saturday, the Lady Pioneers will host the Lady Hilltoppers of West Liberty at 2:00 p.m. On Monday, they travel to Fairmont for a 5:15 p.m. match-up.



Niki Cale takes the shot.

Men's Statistics (through 13 games)

	<u>PTS/GAME</u>	<u>FG%</u>	<u>REBOUNDS</u>
Desdi Saunders	13.0	61.5	7.5
Richard Smith	12.5	41.7	3.7
Uwone Jackson	12.1	43.5	5.5
Chuck Smith	11.0	45.8	4.7
Mike Fallon	11.0	46.2	3.8
Steve Shuff	9.4	39.3	1.9
Jason Swhendeman	4.8	52.5	2.5
Mark Nuckols	3.9	27.1	1.2
Mike Meredith	2.3	60.9	1.0
Josh Sirch	2.2	50.0	.4
Andre Dekok	2.0	63.6	.6
Jeremy Rodda	1.1	38.9	1.2

BLOCKED SHOTS

R. Smith 6
Sanders 4
Smith 4
Fallon 4

STEALS

C. Smith 33
Shuff 18
Jackson 16

ASSISTS

C. Smith 39
R. Smith 35
Shuff 31

Lady's Statistics (through 13 games)

	<u>PTS/GAME</u>	<u>FG%</u>	<u>REBOUNDS</u>
Niki Cale	16.7	40.2	3.0
Jackie Myers	16.3	53.5	11.5
Christy Fitzwater	13.3	40.2	3.2
June Shriver	9.5	41.7	5.9
Nikki Hardman	6.5	47.3	5.3
Lauri Slaughter	6.2	42.2	6.2
Jodi Hill	6.1	37.9	3.7
Amy Scott	3.2	29.4	0.9
Stephanie Ferrell	2.4	40.0	2.6
Angela Carpenter	0.2	0.0	1.0

BLOCKED SHOTS

Myers 30
Shriver 10
Hardman 10

STEALS

Cale 26
Fitzwater 19
Shriver 14

ASSISTS

Fitzwater 59
Cale 54
Shriver 25

Glenville State Intramurals 1992 Basketball Schedule

COURT 1

COURT 2

WEDNESDAY, JAN. 22

7:00 TCB VS. NADS
8:00 HEAT VS. CRU
9:00 B SHAKERS VS. GUNNERS

JUST DID IT VS. NAKEDS
ADIDAS VS. TOWNIES
LEGENDS VS. UBA

THURSDAY, JAN. 23

7:00 VULCANS VS. STAFF
8:00 BULLS VS. FLIGHT CREW
9:00 LONGDUCKS VS. GUNNERS

UNDERDOGS VS. NADS
TCB VS. NAKEDS
JUST DID IT VS. B. SHAKERS

MONDAY, JAN. 27

7:00 LEGENDS VS. STAFF
8:00 UNDERDOGS VS. NAKEDS
9:00 TCB VS. BOODIESHAKERS

UBA VS. NADS
BULLS VS. GUNNERS
LONGDUCKS VS. JUST DO IT

Intramural Notes

With the new semester comes changes in the weightlifting hours for the intramural program. The new hours are from 5:45 p.m.-7 p.m. Aerobics are at the same time from 4:45 p.m.-6 p.m.

Sign up's are now being taken for the three-point shoot-

out. Each team can submit a maximum of four players per roster. Entry deadline is Thursday, January 28. The two finalists for both men and women will be held on February 3 at halftime of the men's game with D&E.

Arts & Entertainment

Pentaura Quintet to Accompany Charleston Ballet

The Pentaura Quintet will accompany the Charleston Ballet as part of the University of Charleston's "Capital Event Series" on January 25, 1992.

The Pentaura Quintet began working together in 1986 as the Charleston Symphony Wind Quintet. Under this name the quintet gave its premiere performance on May 9, 1987. When the Charleston Symphony Orchestra changed its name to the West Virginia Symphony, the quintet took its current name.

Pentaura Quintet derives from two Greek words meaning "Five" and "Winds" or "Auras".

The members of the group are: Ellen Beal, Flute; Lorraine Dorsey, Oboe; Robert Turizziani, Clarinet; Marshal Palmer, Horn; and Klif Hodgkin, Bassoon. All five preformers are regular members of the West Virginia Symphony Orchestra. The quintet's members also perform, or have performed, with the Richmond Symphony, the Lakeside Orchestra, the Cincinnati

Symphony, the Columbus Symphony, the Louisville Symphony, the Cincinnati Chamber Orchestra, and Pro Musica of Columbus.

Pentaura Quintet has been selected as Artists in Residence at the Festival at Sandpoint in Sandpoint, Ohio, as well as Artists in Residence at the Banff Center for the summer session in Banff, Alberta, and Canada. At these two festivals, the Pentaura worked with such

well-known musicians as Gunther Schuller, Sol Schoenbach, Louis Krasner, Alan Hacker and Thomas Nyfenger. Recently, Pentaura has coached with internationally renowned flutist Michael Debost.

Pentaura Quintet performs throughout West Virginia and has presented Master Classes at a number of state colleges and universities.

The Pentaura will accompany the Charleston Ballet when the troupe premieres three

works on January 25, 1992, at 8 p.m. in Geary Auditorium at the University of Charleston as part of its "Capital Events Series." Tickets are \$10.00 for adults and \$8.00 for students/seniors and will be available beginning January 3, 1992, at the University of Charleston's Conservatory of Music, Herbert's Music, Dance Apparel in Dunbar, and the Charleston Ballet office. For additional information, please call the ballet office at 304-342-6541.

'Brighton Beach Memoirs' to Play at GSC

The Glenville State College stage comes alive once again January 23-25 with the presentation of "Brighton Beach Memoirs" by Neil Simon.

The comedy takes place in Brooklyn, New York in 1937. The story centers around Eugene, a young aspiring Jewish writer who must deal with his family's problems as well as his own. Eugene provides a humorous dialogue in the areas of puberty, philosophies on life and even baseball. His character is supported by an interesting cast which ranges from Eugene's brother Stan, who gambles too much, to his cousin Nora who has

recently caught Eugene's eye.

The play is directed by Chris Reed, a student at GSC majoring in history. Reed won a contest conducted by the GSC drama department last year and earned the privilege of presenting his own GSC production.

Besides the funny dialogue and charming characters, the production will be presented in the GSC Administration Building theater, which provides close seating to the stage so every line will certainly be heard.

"Brighton Beach Memoirs" will play February 23-25 with all performances beginning at 8 p.m.

GLENVILLE STATE COLLEGE CULTURAL CALENDAR

- JANUARY -

13-31 Art Majors Exhibition, Art and Music Building, Gallery

- FEBRUARY -

1 Drama Festival, Art and Music Building, Auditorium, 8 a.m.

3-28 Jeffrey Carr, Paintings and Drawings, Art and Music Building, Gallery

26-28 "Steel Magnolias," Play, Art and Music Building, Auditorium, 8 p.m.

Classified Ads

FREE TRAVEL, CASH, AND EXCELLENT BUSINESS EXPERIENCE!! Openings available for individuals or student organizations to promote the country's most successful **SPRING BREAK** tours. Call Inter-Campus Programs 1-800-327-6013.

Earn \$10.50/hr. Part-time flexible hours

in sales.
(Glenville Area)
Call: 201-408-5558.

ALASKA SUMMER EMPLOYMENT--fisheries.
Earn \$5000+/month.
Free transportation!
Room and board!
Over 8000 openings.
No experience necessary. **MALE or FEMALE.** For employment program call Student Employment Services at 1-206-545-4155 ext. 284

PIZZA ROYALE SPECIAL

Buy one 12" pizza with any topping at the regular price get the second 12" pizza with one topping for \$4.00.

Hours: Mon-Wed 11-10:30 p.m.
Thurs-Sat 11-Midnight
Sun 3-10:30 p.m.
Free delivery 11 a.m. - 1 p.m.
4 p.m. - close
11 W. MAIN STREET
462-5015

CASH TIRE SERVICE

Tire Specials Everyday!

Services performed: brakes, shocks, alignment, state inspection, oil and lube (\$15.95)

462-5606

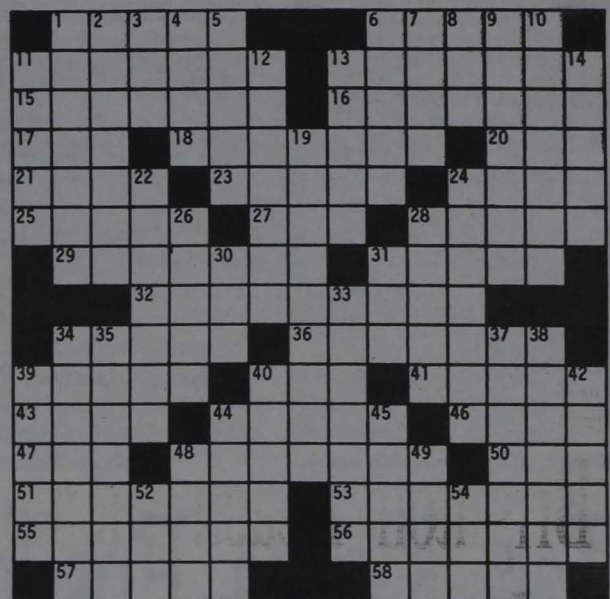
Location: on the hill between Foodland and the college

Potpourri

CHADS ICES PBA
CIPON MAMA RUN
RAYNE PRINCESS
ARENAE UP GOES
GASGUZZLER TIT
EASTER DIE
MUCILLAGES ONEND
ARENOT STONED
CANAL DENTISTRY
ONO LIENEE
NOTE RAZZMATAZZ
AVIARY AMALIE
PIPESTEM RESINS
ICH LESE INSECT
NIS ARTS EDENS

answer to December 11
puzzle

collegiate crossword



© Edward Julius Collegiate CW8704

ACROSS

- 1 — paper
- 6 Cut
- 11 String of beads
- 13 Berated
- 15 Italian food
- 16 "60 Minutes" host
- 17 Linguistics suffix
- 18 Cotton cloth
- 20 Part of BMOC
- 21 Time periods
- 23 Tennis term
- 24 Slang for fires
- 25 The Flintstones' pet, et al.
- 27 Statement term
- 28 Baseball hall-of-famer, — Irvin
- 29 Military gestures
- 31 Soils
- 32 Greek statesman
- 34 Greek island
- 36 Leveling devices
- 39 Baseball MVP of 1961
- 40 — forma
- 41 Piano seat
- 43 Mr. Kazan
- 44 Coffin stands
- 46 Well-known electronics company
- 47 — ear
- 48 Exchanged words
- 50 Wide's partner
- 51 Bowling ball material
- 53 Scholarly
- 55 Periods of time
- 56 Brownish pigments
- 57 Know the —
- 58 Gives a signal
- 12 Angry outbursts
- 13 Low, wet land
- 14 Stupid
- 19 Grouped closely
- 22 Hospital convalescence rooms
- 24 Supporting undergarments
- 26 Hangs ten
- 28 Ways of conducting oneself
- 30 God of the sky
- 31 Ike's initials
- 33 Piano keys
- 34 Quality
- 35 South American river
- 37 — nail
- 38 Musical pieces
- 39 Distributed
- 40 Forest inventory
- 42 Ancient harps
- 44 College in Maine
- 45 Type style
- 48 — one's time
- 49 Formal fight
- 52 Siesta
- 54 Short for Deoxyribonucleic acid

DOWN

DILBERT® by Scott Adams



GARFIELD® by Jim Davis



PEANUTS® by Charles M. Shultz



NERVE DAMAGE® by Jon Criner



MORE NERVE DAMAGE®



Diversity Questions the Media on David Duke

(Editor's note: This article was reprinted with permission from Diversity magazine.)

Who is the most famous Republican in the land? The answer can only be David Duke, the former KKK/Nazi/etc. who won a whopping 39 percent of the vote in the gubernatorial election in Louisiana on October 20. Duke, who has been disavowed by every prominent figure in the national Republican Party and has even received the cold shoulder from the Louisiana GOP, is now being painted by the media as the party's second standard bearer, after President Bush.

Richard Cohen, *The Washington Post's* designated demagogue on race issues, calls Duke, "...the former Nazi and Ku

Klux Klan leader who, with some cosmetic surgery and barely moderated views, pronounces himself just another Republican. He sure looks like one to me." Cohen's barely concealed glee at being able to tar the national Republican Party by association with Nazis is unseemly at best.

National magazines joined the Duke publicity parade. In the week before the election, both *Time* and *Newsweek* ran cover stories profiling Duke. *U.S. News and World Report* went so far as to muse on whether Duke could call up the National Guard, if he were so inclined. Citizens of neighboring Arkansas are rumored to have been very concerned about the possibility of an invasion.

For those who believe,

however, that 39 percent of the vote in a statewide election in Louisiana, a state with a population of just over four million, represents a national trend, please consider the last two senatorial elections in the state of Maryland (also with a population of four million). In 1986, a conservative Hispanic woman, Republican Linda Chavez, polled nearly 40 percent against a liberal Democrat. In 1988, Alan Keyes, a conservative black Republican, equalled Chavez' total against an incumbent liberal Democrat. Why are Keyes and Chavez not trumpeted by the media as exemplars of Republicanism?

Both Chavez and Keyes were virtually ignored by the national media. Because they didn't

fit the media's pre-conceived notions about Republicans (white racist males), or the ideological profile of minorities (like Jesse Jackson), they were made into non-persons. At the same time, the would-be protectors of truth made every effort to let the nation know that minority voters did not feel welcome in the Republican Party—a situation that might change if the media starts reporting that black and Hispanic Republican candidates are enjoying unprecedented success. In addition to the two Maryland candidates, Kenneth Blackwell in Ohio, Congresswoman Ileana Ros-Lehtinen of Florida, and Congressman Gary Franks in Connecticut, all stand as examples

of black or Hispanic Republicans who did much better than Duke, but have received only a fraction of the coverage.

Liberal politicians have a lot to lose if black and Hispanic voters suddenly discover that they have a two-party system, and their cohorts in the media appear willing to oblige their electoral wishes (Keyes, who is running again in 1992, is still *persona non grata* to much of the media). By playing up the fact that there is a racist kook who calls himself a Republican while ignoring the growing successes of conservative black and Hispanic Republicans, the media again shows that it is more concerned with partisanship than with news reporting.

Tau Kappa Epsilon

On Monday January 13 the brothers of the Iota Omega Chapter of Tau Kappa Epsilon held a formal meeting in the basement lounge of Louis Bennett Hall. The upcoming rush events were the main topics of discussion. Also, the upcoming regional leadership conference was discussed and four members were elected to attend.

If you are interested in

joining a fraternity, or would just like to find out what fraternities have to offer, be at the Wesley Foundation on January 30 at 6:00 p.m. for an informal seminar and pizza party. Admission is free. Go Greek.

Last semester Iota Omega said goodbye to two outstanding officers: John Holstein and Billy Martin. Their energies will be missed by all of us.

Valentine Dance

The GSC Classified Staff Council will be sponsoring a Valentine Dance on Saturday, February 1, 8:30 p.m. to 1 a.m. in the GSC Ballroom. There will be

music for everyone's dancing enjoyment. Admission: \$3 single, \$5 a couple. Dress: informal. Snacks and beverages will be sold.

FOODLAND

Special This Week:

Rent 1 video for \$.99

Rent another \$.99-video FREE!

Good 1/22--1/25

January Financial Aid Awareness Month!

All students and other interested parties:

- * Get the answers to your student financial aid questions!
- * Find out what's new for 1992-93
- * End the confusion!

You may call any toll-free hotline:

1-800-344-9881

1-800-642-3463

1-800-624-6992



January 22 & 23: 7-9 p.m.

-- NEW HOURS -- *Baird's Jewelry*

Monday & Tuesday -- 11:00am to 7:00pm

Wednesday -- CLOSED

Thursday & Friday -- 11:00am to 7:00pm

Saturday -- 9:00am to 1:00pm

"Your Full Service Jewelry Store"

765-5151

Located off I-79, Flatwoods Exit 67