



Robin L. Stalnaker assumes new post February 1. photo by Heather Messenger

# Stalnaker New Director of Institutional Reporting

Formerly the Office Manager for Administrative Services and Personnel at Glenville State College, Robin L. Stalnaker has been promoted to Director of Institutional Reporting. Stalnaker, a native of Glenville, holds two degrees from Glenville State College. She received an associate in secretarial science in 1979 and an associate in arts in administrative science in 1990.

Stalnaker began working for Glenville State College as a secretary for the Social Science Division in 1975. In 1979 she became the secretary for Administrative Services and Personnel and was promoted to Administrative Aide in 1989. In 1990 she was again promoted to Office Manager.

"During my tenure with Administrative Services and Personnel, I assisted with and was responsible for the completion of a variety of reports. I feel that that experience should be an asset to me when I assume my new duties on February 1," said Stalnaker.

As Director of Institutional Reporting, Stalnaker will be charged with managing a wide variety of reports including those concerning finance, enrollment, and personnel.

"Because important decisions are made regarding the information supplied in the reports and because the reports are a direct reflection of Glenville State College, it is essential that the information be accurate and filed in a timely fashion," said Stalnaker.

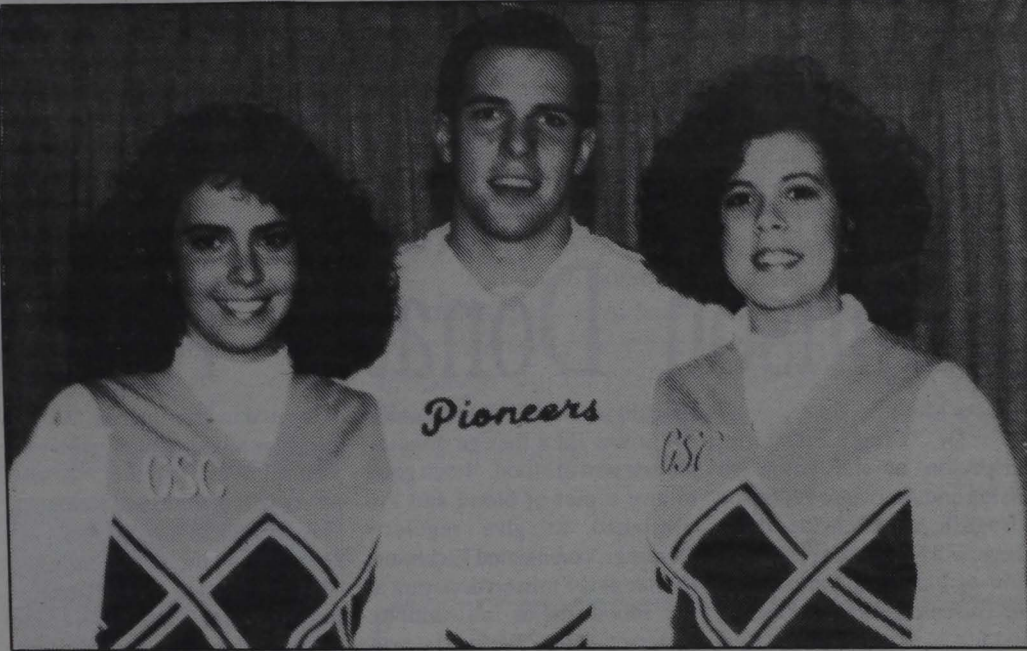
According to Stalnaker, a majority of the reports go to the State College System's Central Office in Charleston and to the legislature.

"I appreciate the opportunity to serve as the Director of Institutional Reporting. I see the position as a challenge and I look forward to assuming my new role in February," said Stalnaker.

Robin is married to Pat Stalnaker of Glenville. She is the daughter of Fermen Lee and Dorothy Rhoades, also of Glenville.

# THE GLENVILLE MERCURY

Glenville State College January 29, 1992 Volume 63 Number 13



Tina, Gary, and Heather Messenger all cheer for Glenville State.

# Glenville State, Family Tradition For Messengers

Glenville State College has proof that good things come in threes. Siblings, Gary, Tina, and Heather Messenger of Weston are students as well as cheerleaders at the college.

Gary, 23, a senior at GSC will graduate May 1992 with a bachelor's degree in physical education and social studies. After graduation, he plans to pursue a degree in sports medicine before applying to medical school.

Concerning his choice to attend GSC, Gary said, "I was recruited to play football by Bethany and Fairmont, but I wanted to come to Glenville. And I'd do it all over again. I love Glenville State. I have had very good experiences and good relationships with my instructors and coaches. It's not like going to school so much as being a part of a huge family. I know everyone and I've done everything."

At Glenville State, Gary has been involved in a wide variety of activities including the football team, wide receiver; Student Congress, vice president and president; Lambda Chi Alpha,

social fraternity; Louis Bennett Hall Governing Board; Judicial Board; Resident Assistant; Athletic Committee; and Activities Committee, chairman.

Gary has been a member of the GSC Cheerleading Squad for three years. "I tried out because a friend bet me that I wouldn't-- and I made it. Being a cheerleader has really helped me. Now I'm not afraid to get up in front of people. I used to be very shy," said Gary.

Tina, 20, is a sophomore art education major. She has been involved in a variety of activities at the college including Student Congress, Senator at Large; Activities Committee; and photographer for the student newspaper and yearbook.

"It is a good experience at Glenville State. It's very comfortable -- you never pass an unfriendly face. I feel like I've known the other students all of my life," said Tina.

"I really enjoy my classes. All of my instructors teach a variety of approaches to art, and they allow you to choose your own style. Also, I've been exposed to a

foreign exchange art professor who helped me compare and contrast art and cultures," she added.

In addition to cheerleading, Heather, 18, a freshman, is a photographer for the college newspaper and yearbook.

"I'm in criminal justice and I love my classes -- it's all so interesting. My professors make learning interesting," said Heather.

"We're closer now than ever before. Now we don't have our parents to look out for us, so we look out for each other," offered Tina.

"This is our last year all together because Gary is graduating. So this will be the most special year of our college lives," she added.

The Messengers are the children of Gary and Karen Messenger of Jackson's Mill. The late William "Bill" C. Danser and Josephine Danser of Weston, and Lester and Virginia Messenger of Linn are grandparents of the Messenger children.

## INSIDE what's

- Pioneer Sports p.5
- Student Art Exhibit p.6
- Dean's List p.8



# Students Encouraged to Apply Early for Financial Aid

by Anthony Riffe

The financial aid early entry deadline is approaching fast. All students are encouraged to fill out their financial aid forms and send them to Princeton, NJ by March 1.

Students at Glenville State could be missing out on their share of money awarded for financial aid programs. Sixty percent of students enrolled at Glenville State are receiving some form of financial aid. Four million dollars was awarded for financial

aid in 1991 alone. In order to be considered for financial assistance you must first apply.

You can pick up a financial aid form in the Financial Aid Office located on the ground floor of Louis Bennett Hall. You should then fill out the form and send it to Princeton, NJ by March 1. You should mail the form at least one week before the deadline so that it is sure to arrive in New Jersey on time to be considered. If for some reason you can't get your financial aid form in time for

the first deadline don't panic. You can apply for financial assistance at anytime, but by applying before March 1, you qualify for the most amount of assistance possible. After you send in your form you still have to complete verification upon request by the Financial Aid Office. The hours of the Financial Aid office are from 9 a.m.-12 noon, and from 1 p.m.-4 p.m. on Monday - Friday. Students are always welcome to stop in and ask questions.

A

common

misconception with students is they feel they won't be eligible for financial aid. As it turns out most students are eligible for some form of help. Even students who feel they are not eligible should take time to apply. Some financial programs require full time student status, others do not. For example the West Virginia Higher Education Grant requires you have a full time schedule which consists of 12 or more hours, but virtually all others only require six or more. Some of the things

that might determine the amount of aid you receive are as follows: family income, number of members in house hold, number in college, and assets held, although it is equally important to answer all questions on the form.

Karen Lay of the Financial Aid Office had this to say about the importance of filing for financial aid, "I want to stress the importance of applying now to get the best possible chance for qualifying for the most aid for the next school year."

# Etchinson Donates 10th Gallon of Blood

by Tracey Moats

Dr. Craig Etchinson, Chairperson of the Language Division and Associate Professor of English, at Glenville State College, will be donating his tenth gallon of blood on February 4, 1992. Etchinson has been donating blood for 20 years. When asked how he got his start donating blood he responded that he simply walked by a blood mobile and

thought it was silly not to donate and it was then that he donated his first pint of blood. "It felt good to give a pint of blood and I've continued to give regularly thereafter," commented Etchinson. He has never missed donating at the blood drives on campus. Etchinson added, "We need strong, healthy college students to give blood."

The regional blood center

is located in Huntington, WV. It provides blood to all hospitals in Central West Virginia. It also serves part of Ohio and Kentucky. Nationally and locally, there is a shortage of blood. According to Sharon Preston of the regional blood center, people are not donating blood as frequently as usual. Reasons for the lack of donations could stem from the recent flu epidemic, or the fear of

contracting AIDS from donating blood. "The nurses use sterile procedures. Every needle is used only once and then destroyed. It is completely safe," said Preston.

To be eligible to donate blood, a person must weigh at least 110 pounds and be at least 17-years-old. It is important to be feeling good in health the day you donate and to have eaten

something before you donate. Blood can be donated safely from each person as often as every 56 days.

A blood drive will be held at the Wesley Foundation of the Glenville State College campus on February 4, 1992 from 12 p.m.-6 p.m. Support is needed to help increase the amount of donated blood.

# Nominations Sought for Student Congress

Nominations are now open for officers and representatives to the Glenville State College Student Congress. Deadline for nominations has been set for Friday, February 7, 1992 at 4:00 p.m. in the Office of Student Services. Qualifications have been amended to the following:

Officers (President, Vice

President, Secretary, Treasurer, and Parliamentarian) must have an accumulative grade point average of 2.5. Candidates must carry a minimum of 12 hours both at time of election and during tenure of office.

Representatives: (six-Senators-at-Large, one Commuter Representative, Sophomore,

Junior and Senior Representatives) must have an accumulative grade point average of 2.2 and carry a minimum of 12 hours both now and during tenure of office.

So, declare your candidacy now at the Office of Student Services.

# Letter to the Editor Parents' Thank Friends

Dear Editor:

We wish to thank all who extended their concern and condolences on the death of our

son. It is good to know that Brandon had friends at Glenville.

Paul and Peggy Krouse

# Daytona Beach Celebrates 30th Anniversary of Spring Break

The countdown to the 30th Anniversary of Spring Break in Daytona Beach has begun! From mid-February through mid-April, thousands of students from throughout the United States will converge on the "Spring Break Capital" for days of fun in the sun.

Some of the highlights of this year will include:

• MTV/ Much Music Coverage of Spring Break - MTV is scheduled to cover the event March 10-17. Canada's Much Music will be headquartered at the Howard Johnson Hotel February 17-23.

• Product expos and giveaways - SpringFest '92 Expo, March 9-13, 16-20, on the beach between Holiday Inn Boardwalk and Howard Johnson; Expo America, March 12-17, Ocean Center; "Spring Break Fest," March 12-22 on the beach, south of Main Street Pier.

Sporting events like parasail rides, Daytona Beach Spring Break College Baseball Jamboree, Party Smart Spring Break Sand Classic sand sculpting contest, Playboy/Schick 3 on 3 Spring Break Basketball Tournament and Lagerfeld Spring Break Volleyball Tournament, as well as the 24th Annual Easter Beach Run on April 18.

• Clubs, restaurants, shops and Attractions all have special rates and packages for students during Spring Break, and of course, the most important aspect of any Spring Break plenty of sun!

Spring Break has drawn crowds as large as 200,000-400,000 every year since 1985 and this year should be just as busy. Destination Daytona!, the Convention and Visitor's Bureau for the Daytona Beach Resort Area, has information on accommodations and events. Call 1-800-854-1234.

## Hair Expo

Barber & Beauty Shop

14 Foodland Plaza  
462-5613

## Baseball Cards!

### 1992

--Topps--Fleer--Donruss--Score--  
Upperdeck Basketball Cards

*New Crafts Arriving Daily*

Mt. Trapper's Crafts  
22 E. Main Street  
Glenville



# CAMPUS KIBITZ

Do you think the new Pizza Hut and other businesses that have opened recently indicate a positive trend in economic development for Glenville? What other businesses would you like to see open in Glenville?

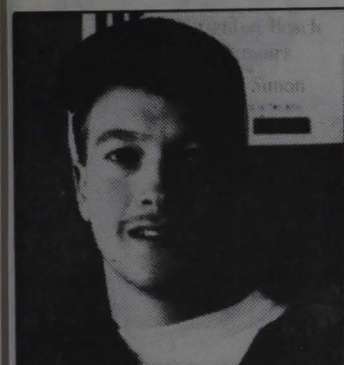
by Anthony Riffe

photos by Tina Messenger



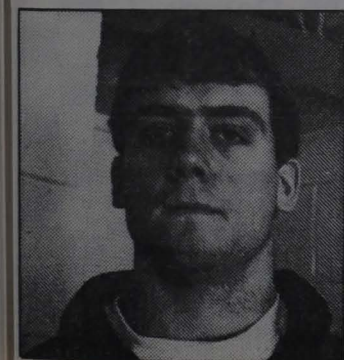
NAME: Rodney Barker  
POSITION: admissions counselor  
HOME TOWN: Smithville, WV  
ANSWER: I think it definitely helps. It helps the whole county. I would like to see a McDonalds open.

NAME: Tami Forinash  
RANK: freshman  
MAJOR: elementary education  
HOMETOWN: Huttonsville, WV  
ANSWER: I do think they represent a positive economic development. I would like to see a Wal Mart open.



NAME: James Pursley  
RANK: freshman  
MAJOR: criminal justice  
HOMETOWN: Ripley, WV  
ANSWER: Yes, I do. I would like a Taco Bell to open.

NAME: Sandy Jones  
RANK: junior  
MAJOR: chemistry and math  
HOMETOWN: Summersville, WV  
ANSWER: Yes, I think it does show positiveness because Pizza Hut had to some kind of research to see if it would be successful. I would like to see McDonalds or Subway.



NAME: Mike Milliken  
RANK: junior  
MAJOR: elementary education  
HOMETOWN: Waynesburg, WV  
ANSWER: Yes, they're creating more jobs and the economy will get better. I don't think they will change that much, but it will some. I would like to see a Hardy's.

## Economic Growth In Glenville Is Upon Us

by Rebecca Hufford

I remember coming to Glenville with my parents every summer to watch the folk festival when I was a child. I remember thinking how everything was always exactly the same each year when we came back. The stores hadn't changed and the people seemed all the same. Even when I moved to Glenville as a freshman, everything seemed to have stayed exactly as it had been when I was younger.

Recently, however, Glenville has gone through a lot of changes. Besides the new Pizza Hut, at least four more businesses have been established in the past year. I see this growth as a positive trend for Glenville and Gilmer County. This is an exciting time for central West Virginia, and we should be proud to be a part of it.

### The Glenville State College Mercury Staff

Editor-in-Chief	Rebecca Hufford
Photographic Editor	Chris Derico
Sports Editor	Sean Davis
Layout	Jon Criner
	Sean Griffith
Circulation Manager	Angela Gill
Proofreaders	Kari McCallister
	Stephanie Phillips
Cartoonists	Jon Criner
	Dan Parker
Art and Entertainment	Anthony Riffe
Advertising Manager	Karen Schoolcraft
Typists	Richard Clark
	Kim Sees
	Stephanie Phillips
Photographers	Chris Derico
	Heather Messenger
	Tina Messenger
	Howard Lanham
Reporters	Kari McCallister
	Becky Richards
	Tracey Moats
	Anthony Riffe
	Stephanie Phillips
Advisor	Lisa Booth

The Glenville Mercury is published weekly during the school year for \$6 per year. POSTMASTER: Send address changes to The Glenville Mercury, Box 207, Glenville State College, Glenville, WV 26351.

Lisa Booth, 200 High Street, Glenville, WV 26351-1292; Rebecca Hufford, 200 High Street, Glenville, WV 26351-1292; Angela Gill, 200 High Street, Glenville, WV 26351-1292

Total number of copies-2000; Paid circulation-1690; Mail subscription-23; Total circulation-1713; Free distribution by mail-187; Total distribution-1900; Copies not distributed-50.



# 'Blizzard of Bucks' Comes to Glenville State

by Anthoney Riffe

Jayson Jameson, the host of the game show "Blizzard of Bucks," brought his show to the Ballroom of Glenville State on January 23, along with his hostess, Jennifer Degan. Students who attended the game show had a chance to win up to \$500 in cash and prizes. The games were made up of three rounds of four people each.

In the first round of the games the participating students played were entertaining to say the least. Jameson explained the rules to the participants as the "Blizzard of Bucks" version of Vanna White prepared the props.

During the first round contestants endured games such as balloon popping with their behinds, carrying balloons with their knees, and catching rubber balls in a large Mexican hat while wearing it. At the end of the first round Cindy Skiles was the winner. Skiles received \$25 in cash and a t-shirt with the game show's logo on it worth \$8.95 totaling her winnings for the first round at \$33.95. The rest of the rounds consisted of basically the same kind of party tricks, with each rounds games getting more and more embarrassing to the contestants. The second round winner also won \$25 and a t-shirt. The third round

winner was Dawn Crites who also won the same amount of cash and prizes. Now the three winners would compete against each other to see who would win the chance to get into the money machine for the chance to grab \$500 in cash. Crites was the first to be eliminated. Then Skiles fell to the witty, competitive efforts of *The Mercury's* very own Heather Messenger. Messenger won the chance at the big money, but was only able to pull down \$46 from the whirling blizzard of money, which brought her total to \$79.95 for the night. But, the games weren't over. Skiles was then asked if she would be

willing to bet the 25 dollars she had already won for a 15 second trip into the Money Machine. Skiles took the chance and ended up with an additional \$46, which brought her new total winning to \$54.95.

Messenger had this to say about her winnings, "It was great. I loved it. I actually came to work and take pictures. I love winning money. It's the first time I actually won something."

Skiles also commented about the games, "It was great being around all that money. It's nice to be able to get money for nothing. I wish this guy would

come to Glenville every week."

Jennifer Degan commented this about the turn out, "We were surprised at the turn out. It was a lot of fun, and the people were great."

Jameson was also pleased with the turn out and had this to say about the show, "It was a nice show. I had a lot of fun doing it. I hope the students enjoyed it."

The students and contestants enjoyed the show, and getting the chance for the money. If you missed the show and would like to see it "Blizzard of Bucks" will be performing at Davis and Elkins on their next stop.

## Former Glenville Physician To Treat Olympic Athletes

Physician James M. Kyle, medical director of the Department of Sports Medicine at St. Joseph's Hospital, plans to visit Jamaica February 17-20 to screen some of the country's top youth soccer athletes for exercise induced bronchospasm (EIB). Several Jamaican sprinters competing for the 1992 Jamaican Track and Field Olympic Team will also be tested.

Unbeknownst to many athletes who suffer from the condition, EIB is an episode of large and small airway obstruction due to swollen bronchial tubes and muscle contractions prompted by vigorous exercise. EIB often affects sports performance, as it induces shortness of breath and coughing, among other symptoms, after five or ten minutes of strenuous exercise.

Kyle, who also serves as a member of the Sports Medicine Advisory Committee of the United States Soccer Federation, is lending his expertise at the request of Jamaican physician Winston Dawes. The two met in Orlando, Florida at the 1991 annual conference of the American College of Sports Medicine where Kyle made a presentation on EIB and its affect on worldclass athletes.

Dr. Kyle is a Fellow of

the American College of Sports Medicine, and chairman of the West Virginia chapter of the American Academy of Family Physicians, West Virginia Athletic Trainers Association, American College of Emergency Physicians and West Virginia State Medical Association. He also serves as chairman of Project TARGET West Virginia Advisory Committee, a student athlete drug and alcohol abuse prevention program.

Kyle has published many articles concerning sports medicine and student athletes, and is frequent lecturer on students' sports-related disorders and injuries.

Kyle received his bachelor's degree from Concord College in Athens, West Virginia. He earned a medical degree from West Virginia University School of Medicine.

Prior to developing the sports medicine program at St. Joseph's Hospital in 1987, Kyle was a rural-based family physician in Glenville, West Virginia, and later served on the faculty at the Marshall University School of Medicine where he coordinated the Division of Sports Medicine.



## Fun Fridays at the Derrick Lounge

January 31, 1992

**GAME NIGHT**



9pm to 2am -- no cover charge

**DJ Night!**

February 7, 1992

**Beach Party**  
Limbo

Best Looking Legs Contest-Males only!

9pm to 2am

Prizes--Specials--Prizes--Specials

**DJ Night!**

February 14, 1992

**Valentine's Dinner Dance**

Dinner 5pm-10pm

Dance 10pm- 2am

Cover Charge--Discount

Get your discount ticket from your

waitress when you dine in the

I.L. Room or Cafe

**Live Music!**

---- **College Night Every Thursday** ----  
**Go Pioneers & Let's Meet at The Derrick**



9 East Main Street - Glenville, WV

"Locally Owned and Operated"



Advertise in  
*The Mercury*



# PIONEER SPORTS

by Sean Davis

## Pioneers Defeat Golden Bears 91-85

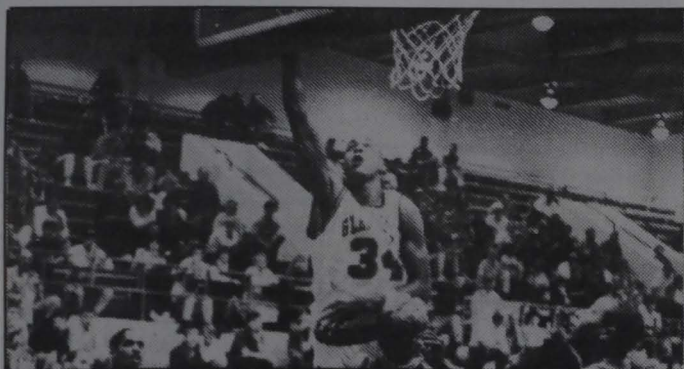
The GSC Pioneer men's basketball team made the most of a short work week by defeating WV Tech at Montgomery 91-85 in their only game of the week on Wednesday.

The Pioneers held a 45-0 lead at halftime and held off a charge by the Golden Bears to win their nine in 15 outing.

Richard Smith led the Pioneers with 24 points, Uwone Jackson added 22 points, 6 rebounds followed by Mike Johnson's 15 and Steve Shuff chipped in with 14 points.

WV Tech was led by David Kidd with 29 points and 11 rebounds.

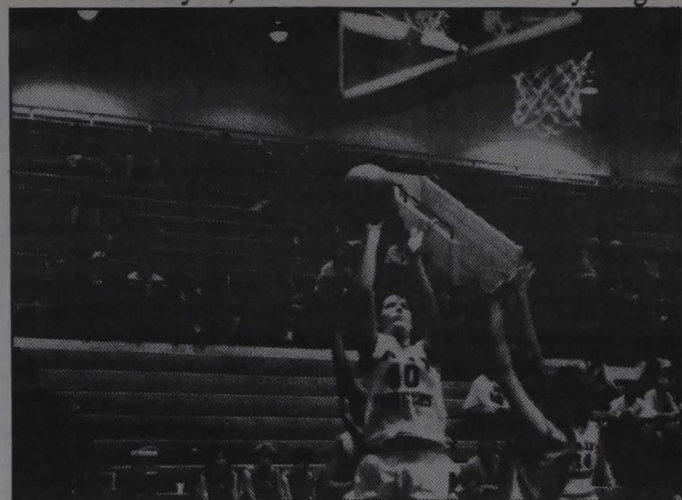
The Pioneers will face AB on Wednesday on the road at 7:30 p.m. They will be in action on Saturday when they will host WV Wesleyan at 7:30 p.m.



Dedsi Saunders goes for the score.

photo by Chris Derlco

	1st	2nd	TOTAL
GSC	45	46	91
WV Tech	30	55	85



June Shriver shoots for the Lady Pioneers.

photo by Chris Derlco

## Lady Pioneers Led by Nikki Cale

On Wednesday the women traveled to Montgomery for a clash with WV Tech and the Golden Bears prevailed with a 62-74 win over the Pioneers. Nikki Cale led the Pioneers with 27 points and Jackie Myers added 12 points and 10 rebounds in a losing effort.

The women opened the week at the University of Charleston and lost 46-82. The Pioneers were without the services

of leading scorer Nikki Cale who was sidelined with an injury. Nikki Hardman led the Pioneers with 18 points and 10 rebounds.

Saturday's game with West Liberty was canceled due to bad weather conditions. No make up date has been set yet. The women will be back in action again on Saturday at 5:15 p.m. in a double header with WV Wesleyan.

	1st	2nd	TOTAL
GSC	42	20	62
WV Tech	45	29	74

	1st	2nd	TOTAL
GSC	22	24	46
UC	41	41	82

## Glenville State Intramural 1992 Basketball Schedule

COURT 1

COURT 2

### WEDNESDAY, JAN. 29

7:00	LEGENDS VS. NADS	STAFF VS. FLIGHT CREW
8:00	UBA VS. NAKEDS	VULCANS VS. GUNNERS
9:00	UNDERDOG VS. B.SHAKERS	BULLS VS. JUST DID IT

### THURSDAY, JAN. 30

8:00	GLENVILLE HEAT VS. TOWNIES	CRU VS. ADIDAS
9:00	VULCANS VS. FLIGHT CREW	TCB VS. LONGDUCKS

### SUNDAY, FEB. 2

6:00	NO GAME	LEGENDS VS. FLIGHT CREW
7:00	NADS VS. BOODIE SHAKERS	STAFF VS. GUNNERS
8:00	UBA VS. BOODIE SHAKERS	VULCANS VS. JUST DID IT
9:00	UNDERDOG VS. LONGDUCK	BULLS VS. TCB

### TUESDAY, FEB. 4

8:00	LEGENDS VS. NAKEDS	FLIGHT CREW VS. GUNNERS
9:00	NADS VS. BOODIE SHAKERS	STAFF VS. JUST DID IT

### WEDNESDAY, FEB. 5

7:00	UBA VS. LONGDUCKS	VULCANS VS. TCB
8:00	GLENVILLE HEAT VS. ADIDAS	TOWNIES VS. CRU
9:00	UNDERDOGS VS. BULLS	LEGENDS VS. GUNNERS

## Season Open for Intramural Basketball

Intramural 5 on 5 TCB, and Vulcans finished last basketball season opened last week with a full slate of games for both the men's and women's teams.

Teams that opened the season with 2-0 starts include the Naked, the Nads, Staff, UBA, and Longducks.

Teams that started out 1-1 last week were Boodieshakers, Flightcrew, Gunners, Legends, and Underdogs.

Four teams are still looking for their first win of the year include Bulls, Just Did It,

For the women's teams The Heat defeated CRU 74-24 and Adidas had to forfeit to the Townies.

There are 14 teams in the men's league, and they will play 13 regular season games. There are four women's teams and they will play six regular season games. The top four seeds form both men's and women's division will make the playoffs to be held on March 2, 3, and 4.



# Arts & Entertainment

## Students Exhibit Art in Art and Music Gallery

by Anthony Riffe

The Student Art Exhibition opened its doors to the gallery of the Art and Music Building on January 13, and is due to close January 31. The art exhibition is composed of different types of art from different types of students.

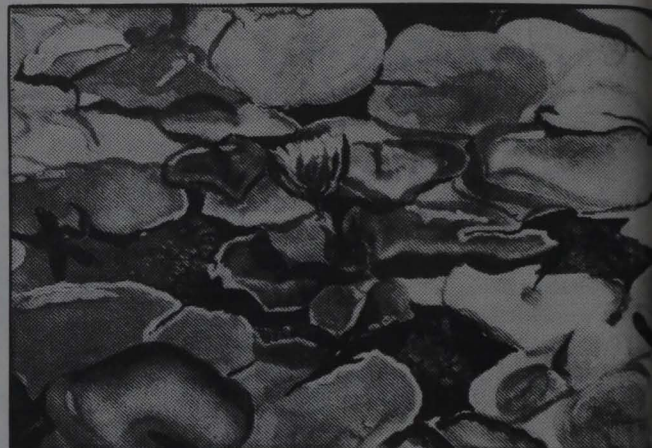
The works represented in the show are realistic indications to the rest of the student body of the creations completed in the art classes. Much of the art being displayed is in uncompleted form, which complements a somewhat

complicated piece of work with a simplistic style. Much of the art displayed is reasonably priced for students wishing to purchase items.

It is obvious that Glenville State has some very talented artists enrolled. The show displays works by seniors, juniors, sophomores, and freshmen, as well as International students. Dr. Gillespie commented about the show, "There's a great deal more going on in the art department than covered in the show. There's some expressions of regret that

there is no pottery or sculpture examples represented. Those things will be exhibited in a later show. Part of the reason is just getting too much in the gallery and cluttering it up. There is a great deal of activity so there will be more than one occasion for displays."

Students are encouraged to see the show soon, if you find the gallery doors locked you can ask the secretary in the Fine Arts Building for assistance in getting in to view the exhibition.



"Lily Pads," a watercolor painting by Robert Updegrave. photo by Chris Der

## Parker Wins Logo Contest

by Tracey Moats

A contest was held among Glenville State College students to create a design for the logo of the skilled and reflective teacher. The concept of the skilled and reflective teacher was developed by the Glenville State College Education Division.

The winner of the contest

was announced on November 22, 1991. The winning design was created by Daniel Parker, a freshman at Glenville State College. Raymond Oliverio, executive vice-president of the Glenville State College Foundation Inc., presented Parker with a check for \$50.

Parker is majoring in art education and is the son of Marcia and Sherman McCullough of Sand Fork, West Virginia.

The second place logo was conceived by Tracy White of Buckhannon, West Virginia. White is a senior majoring in multi-subjects.



Raymond Oliverio (l.) and Dr. Steven Creasey (r.) with logo contest winner, Dan Parker

## Brass Recitals Presented by GSC Music Department

On Monday and Tuesday, January 27, and 28, the Glenville State College Music Department presented two brass recitals in conjunction with a two-day brass workshop involving five guest brass faculty and GSC brass music majors. Monday's concert featured the guest faculty in solo and ensemble performances including "Sonata for Trombone and Piano" by Paul Hindemith, "Canto Serioso for Horn and Piano" by Carl Nielson, "Two Song for Tuba and Piano" by Robert A. Spillman, "Elegy for Trumpet and Piano" by Rolf Wallin, "Boutade

for Trumpet and Piano" by Pierre Gabaye, "The Bright Seraphim for Trumpet, Soprano, and Piano" by G.F. Handel, and "Arioso for Euphonium and Piano" by J.S. Bach.

The faculty soloists were Sheila Wiseman, trombone, and Rockland Wiseman, tuba, both teachers in Wood County; Kenneth Long, euphonium, Parkersburg; Timothy DeWitt, trumpet, Alderson-Broadus College; Andrew Scott, horn, Buckhannon-Upsher Middle School; Harry Rich, trumpet, GSC; John Walkup, piano, GSC;

Jeffrey Phillips, piano, Parkersburg; and Rhonda Paoletti, soprano, Glenville.

Tuesday evening's concert featured the GSC student brass ensembles under the direction of the guest faculty. These ensembles included three brass quintets, brass quartet, trumpet ensemble, tuba/euphonium ensemble, and trombone ensemble.

GSC students taking part in the workshop were: Lisa Adkins, Clay; Allan Bearfield, Charleston; Marsa Corathers, Weston; James

Fleshler, Buckhannon; Keith Jean, Charleston; Steve Jones, Shinnston; Jayme Keffer, Seth; Carrie Kerns, Richwood; Amy Lopez, Grantsville; Bo McMillion, Summersville; Kenneth McWorter, Buckhannon; Marvin Prevost, Mt. Hope; Eugenia Price, Glenville; Chuck Satterfield, Weston; Heather Schweiker, Bridgeport; Donna Sibray, Beckley; Dawn Smith, Spencer; Marti Steiner, Elkins; Dan White, Parkersburg; Tim White, Parkersburg; and Stacy Yaok, Grantsville.

## Classified Ad

Earn \$10.50/hr.  
Part-time  
flexible hours  
in sales.  
(Glenville Area)  
Call: 201-408-5558.

ALASKA SUMMER  
EMPLOYMENT--fisheries.  
Earn \$5000+/month.  
Free transportation!  
Room and board!  
Over 8000 openings.  
No experience  
necessary. MALE or  
FEMALE. For employe  
program call Student  
Employment Services at  
1-206-545-4155 ext. 284

### GIL-CO PHARMACY

32 E. Main Street  
462-8300  
Health and Beauty Aids  
Clove Drug Member  
Film Developing

Mon-Fri 8:30-6:30 Saturday 8:30-2:00

We Deliver!

A Dash of Spice  
Greenhouse & Florist  
Rt. 65A Box 16  
Glenville, WV 26351  
(304) 462-7442

Ribbon & Baskets  
Wedding Supplies

Gifts & Crafts

Wire Service  
Available



# Potpourri

## DLBERT® by Scott Adams



## GARFIELD® by Jim Davis



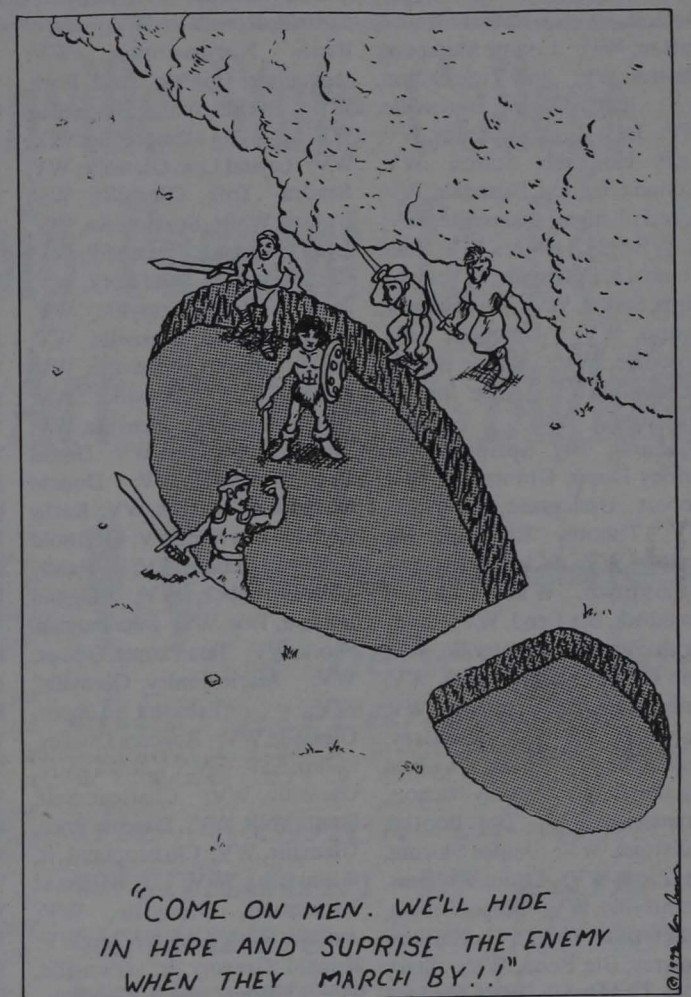
## PEANUTS® by Charles M. Shultz



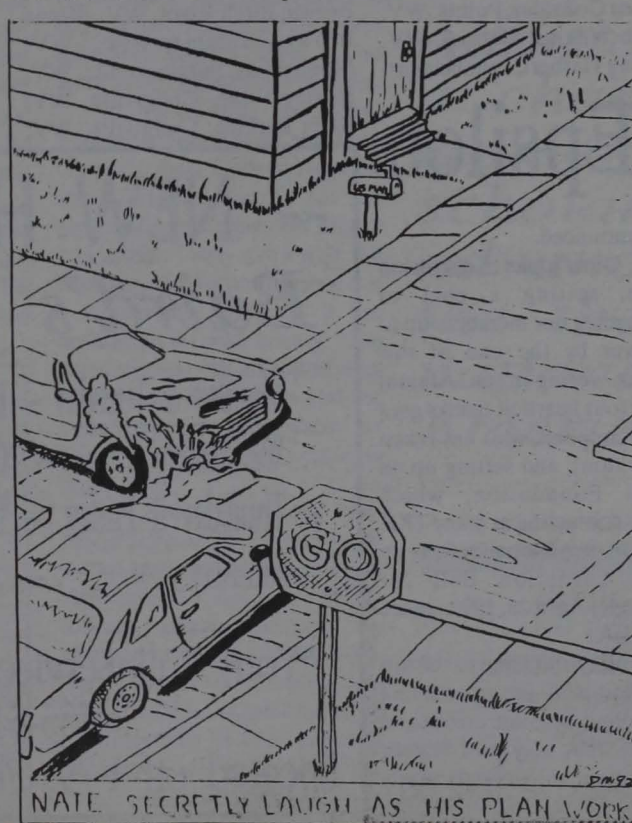
## NERVE DAMAGE® by Jon Criner



## NERVE DAMAGE® by Jon Criner



## THANK'S NATE by Dan Parker



Attention Pianists:  
Accompian needed  
for a college concert  
choir. Must be available  
to practice with choir  
MWF at noon.  
See Karl Paoletti  
about salary arrangements,  
Art and Music Building  
room 215, ext. 185



# Fall 1991 Dean's List Honors Announced

The following students met requirements for the Fall 1992 Dean's List: Tammy Arnold, Gem, WV; Gayla Stump, Gassaway, WV; Terry Vankirk, Burnsville, WV; Kristina Harper, Heaters, WV; Barbara Rader, Sutton, WV; Connie Skidmore, Heaters, WV; Amy Rose, Sutton, WV; Jenifer Frame, Burnsville, WV; John Engel, Gassaway, WV; Kelly Holcomb, Sutton, WV; Melinda Bennett, Rosedale, WV; Beverly Knight, Burnsville, WV; Larry Bright, Heaters, WV; Julie Rumbach, Burnsville, WV; John Davis, Sutton, WV; Tina Hamner, Sutton, WV; Dannielle Lilly, Rosedale, WV; Roger Bowen, Heaters, WV; Alice Stough, Millstone, WV; Frederic Channell, Big Springs, WV; Shirley Hupp, Grantsville, WV; Robert Updegrave, Jr., Chloe, WV; Timothy Richards, Big Springs, WV; Jackquilyn Harris, Stumptown, WV; Lewis Craddock, Big Bend, WV; Linda Jarvis-Parsons, Grantsville, WV; Ann Richards, Big Springs, WV; Catherine Heiny, Grantsville, WV; Kenneth Godfrey, Grantsville, WV; Jason Wagoner, Big Bend, WV; Penny Nichols, Grantsville, WV; Dan Boothe, Millstone, WV; Janice Slocum, Mt. Zion, WV; Leslie Williams, Grantsville, WV; Ginger Brown, Grantsville, WV; Matthew Mowrey, Big Bend, WV; Stacy Yoak, Grantsville, WV; Amanda Sauer, Nicut, WV; Lori Nicholas, Orma, WV; Kenneth Heiney, Grantsville, WV; Tammy Dobbins, Maysel, WV; Melinda Gray, Ivydale, WV; Elizabeth

Samples, Prociuous, WV; Sally Randolph, New Milton, WV; Jamie Coleman, Hico, WV; Dawn Kalinoske, Ansted, WV; Kathryn Phares, Fayetteville, WV; Ann Smith, Rainelle, WV; Margaret Cottrill, Rosedale, WV; Carol Rush, Normantown, WV; Jacqueline Conley, Sand Fork, WV; Evelyn Spaur, Burnsville, WV; Cynthia Heater, Glenville, WV; Crystal Law, Glenville, WV; Sandra Toth, Glenville, WV; Valeria White, Stumptown, WV; Lynn Chapman, Cox's Mill, WV; Carol Edwards, Sand Fork, WV; James Syder, Burnsville, WV; Kristi Rogucki, Glenville, WV; Arthur Stewart, Glenville, WV; Dianna Lee, Glenville, WV; Madeline Harold, Glenville, WV; Tracy Samples, Linn, WV; Daniel Reed, Glenville, WV; Donald Chapman, Glenville, WV; Kathy Corica, Glenville, WV; Berthold Jedamski, Linn, WV; Randy Minney, Shock, WV; Daniel Bonnett, Troy, WV; John Putman, Shock, WV; Tara Parmer, Gilmer, WV; Marie Finley, Glenville, WV; Tabatha Logan, Glenville, WV; Rebecca Duelley, Letter Gap, WV; Kathy Henry, Glenville, WV; Charlene Self, Stouts Mills, WV; Eugenia Price, Glenville, WV; Christopher Utt, Glenville, WV; Michael Richmond, Glenville, WV; Jennifer Russell, Letter Gap, WV; Ronald Gregory Jr., Glenville, WV; Clifford Cody Jr., Glenville, WV; Kermit Moore, Lewisburg, WV; Duane Clemons, Lewisburg, WV; Lea Gonzalez, Points, WV; Kenneth Wilkins, Mathias, WV; Catherine Harbert, Lumberport,

WV; Brian Miller, Charleston WV; Melanie Miley, Belle, WV; Frederick Bearfield, Charleston, WV; Lisa Hall, Weston, WV; Thomas Smith, Alum Bridge, WV; Ruth Barnes, Horner, WV; Ann Myers, Weston, WV; Karen Taylor, Weston, WV; Judy Ramsey, Ireland, WV; Debra Blake, Weston, WV; Michelle Jordan, Weston, WV; Terry Perkins, Ireland, WV; Barbara Gatton, Jane Lew, WV; Martina Norman, Weston, WV; Deborah Smith, Weston, WV; Patricia King, Walkersville, WV; Deborah Garrett, Weston, WV; Troy Short II, Roanoke, WV; Lisa Hardman, Horner, WV; Mark Frye, Fairmont, WV; Tina Martin-Crane, Morgantown, WV; Gloria Wickline, Lindsie, WV; James Johnson, Canvas, WV; Norma Hess, Nettie, WV; Charlestta Comer, Summersville, WV; Debbie Stone, Summersville, WV; Lois Schoolcraft, Richwood, WV; Paula Bennett, Fenwick, WV; Bobby Ellison, Birch River, WV; Brian Sanford, Mt Lookout, WV; Rhonda McCracken, Craigsville, WV; Brenda Burke, Summersville, WV; Robin Lowther, Craigsville, WV; Tracy Lilly, Nallen, WV; Debra Ceslovnik, Summersville, WV; Patricia Perry, Craigsville, WV; Mark Spencer, Fenwick, WV; Barbara Snyder, Richwood, WV; Carla Elder, Craigsville, WV; Tara Bailes, Nettie, WV; Betsy Morris, Cowen, WV; Tammi Gregory, Mt Nebo, WV; Rita Kyle, Summersville, WV; Kevin Brown, Birch River, WV; Kiana Brown, Summersville, WV; Monica Lay, Summersville, WV; Shirley Wine, Craigsville, WV; Kelly Perkins, Craigsville, WV;

Rose Clevenger, Richwood, WV; Teresa Viers, Mt Nebo, WV; Carrie Kerns, Craigsville, WV; Vicky Neal, Mt. Nebo, WV; Angela Rose, Richwood, WV; Timothy Mullens, Summersville, WV; Elizabeth Hurst, Tioga, WV; Sundie Boothe, Craigsville, WV; Melinda Losch, Richwood, WV; Regina Johnson, Tioga, WV; Andrea McClung, Craigsville, WV; Sharon Neal, Calvin, WV; Robert Fockler, Summerville, WV; Lisa Pittsenbarger, Leivasy, WV; Tanya Ray, Summersville, WV; Anita Jarrett, Summersville, WV; James Trivolette, Summersville, WV; Michele Fehrer, Summersville, WV; Brian Dorsey, Pool, WV; Suzanne Kenna, Richwood, WV; Monica Cox, Craigsville, WV; James Shumate, Summersville, WV; Joy Brewster, Craigsville, WV; Maryalice Maher, St. Marys, WV; Michael Shank, Green Bank, WV; Kathy Roach, Arbovale, WV; Jerry McKenney, Slaty Fork, WV; Gerald Frum, Hillsboro, WV; Cynthia Jackson, Marlinton, WV; Samuel Walker, Hillsboro, WV; Brian Spiker, Terra Alta, WV; Charles Reed, Summersville, WV; Ronald Dickens, Arnett, WV; William James, Beckley, WV; Christopher Vandevender, Kerens, WV; Leroy Cunningham, Harrisville, WV; Linda Minigh, Auburn, WV; Kelly Waggoner, Pennsboro, WV; James Crawford, Pennsboro, WV; Ellen Mullins, Harrisville, WV; Karla Ezell, Pennsboro, WV; Inez Hardbarger, Harrisville, WV; Shelba Fountaine, Spencer, WV; Tonya Looney, Spencer, WV; Lucinda Lynch, Spencer, WV; Gregory

Behan, Grafton, WV; Elizabeth Shriver, Grafton, WV; Shaw Dilly, Parsons, WV; Darrin Mo, Parsons, WV; Shannon Heinle, Sistersville, WV; Bonnie Cutright, Rock Cave, WV; Thomas Burn, Jr, Rock Cave, WV; Jean Hawkins, Buckhannon, WV; Kimberly Gould-Smith, Buckhannon, WV; Justin Rowan, Buckhannon, WV; Tammy Mac, Webster Springs, WV; Ga Williams, Cowen, WV; Stephan Sanson, Cowen, WV; Christopher Ellison, Cowen, WV; Linda Smith, Cowen, WV; Joy Bird, Cowen, WV; Elizabeth Young, Webster Springs, WV; Lisa Thompson, Munday, WV; Deborah Thrall, Washington, WV; Kimberl Hershman, Parkersburg, WV; Wayne Peck, Parkersburg, WV; Molly Berwinkle, Parkersburg, WV; Traci Edman, Waverly, WV; Billie Balderson Jr, Davisville, WV; Leslie Willis, Walker, WV; Kara Cummons, Parkersburg, WV; William Abbott, Parkersburg, WV; Wendy Porter, Washington, WV; Randi Tranquill, Davisville, WV; Mindy Wilson, Parkersburg, WV; Paula Maxwell, Vienna, WV; Melissa Morris, Parkersburg, WV; Sonja Phillips, Washington, WV; Tina Ballengee, Parkersburg, WV; Susan Barker, Davisville, WV; Timothy Marks, Parkersburg, WV; Tammy Kirk, Parkersburg, WV; Tina Schott, Parkersburg, WV; Yerufael Berhanemeske, Washington, DC; Hazel Kincaid, Reynoldsburg, OH; Matt Herson, Coshocton, OH; Andrew Brod, Belpre, OH; Matthew Todd, Fo, Wayne, IN; Donald Friedhol, Johnstown, PA; Kimiyo Shinod, Saitama, Japan.

## Tau Kappa Epsilon

The brothers of the Tau Kappa Epsilon Fraternity held a formal meeting on January 20, 1992. Plans were finalized for the up-coming rush seminar. The seminar was previously scheduled to be held at the Wesley Foundation on January 29, 1992, but the location and date has had to be changed due to unforeseen circumstances.

The new location is the Art and Music Building, Room 107, at 6 p.m. on January 30, (Thursday) 1992. So, if you were thinking of joining a fraternity, or you just want to find out more about them, then come and see what we have to offer. For those who attend, there will be a free pizza party afterwards - location

to be announced.

Other topics of discussion include: setting a goal of strengthening our membership to 25 actives by the end of this semester, voting-in an Alumni Advisor (our heartfelt thanks goes to Jeff Campbell, who has taken this position), and setting up an Alumni Foundation, which includes contacting as many TKE Alumni as possible and setting up a Red Carnation Ball for (tentatively) April 25, 1992. More on that later.

We would like to see full participation in the up coming rush seminar, so come on out and listen to what may well benefit you and give you an opportunity to earn some life-long friendships.

-- NEW HOURS --

*Baird's Jewelry*

Monday & Tuesday -- 11:00am to 7:00pm  
Wednesday -- CLOSED  
Thursday & Friday -- 11:00am to 7:00pm  
Saturday -- 9:00am to 1:00pm

"Your Full Service Jewelry Store"

765-5151

Located off I-79, Flatwoods Exit 67

PIZZA ROYAL  
SPECIAL

Buy one 12" pizza with any topping at the regular price, get the second 12" pizza with one topping for \$4.00.

Hours: Mon-Wed 11-10:30 p.m.  
Thurs-Sat 11-Midnight  
Sun 3-10:30 p.m.  
Free delivery 11 a.m. - 1 p.m.  
4 p.m. - close  
11 W. MAIN STREET  
462-5015