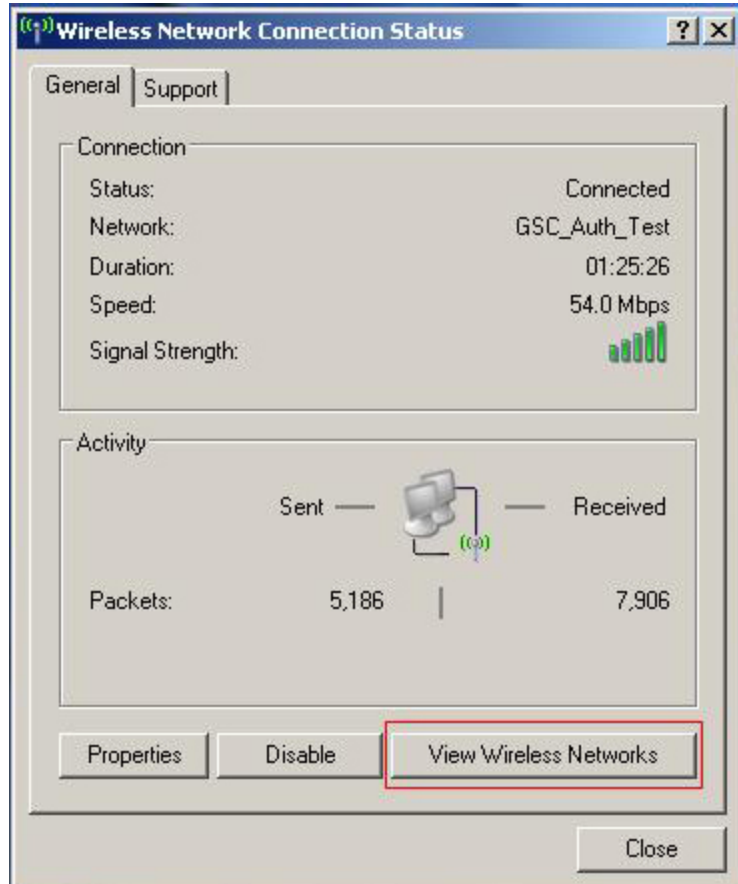


Wireless Authentication Windows XP

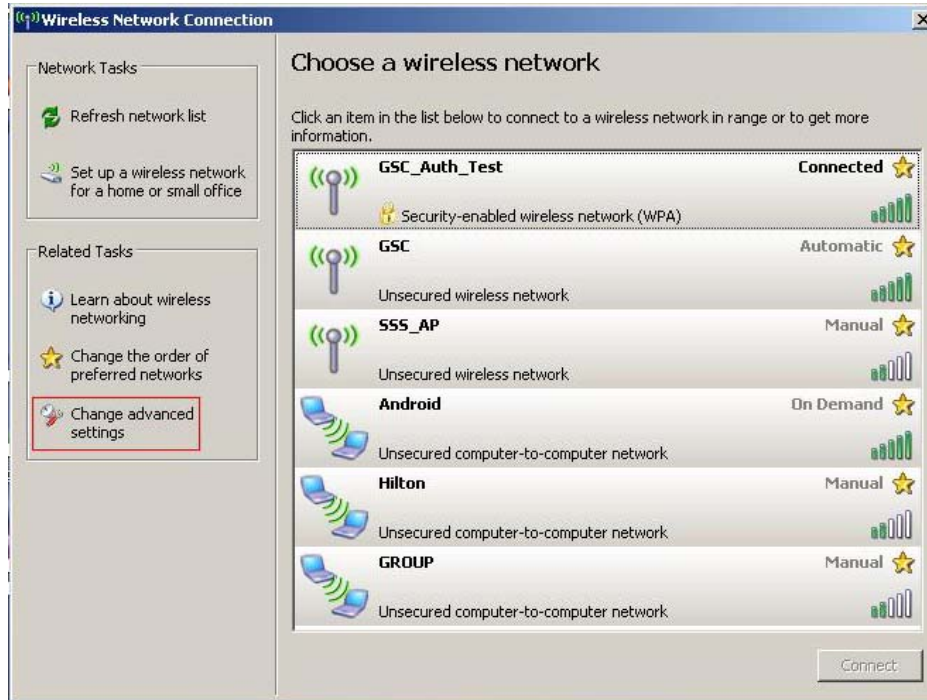
1. Click the icon in the system tray for the wireless network connection.



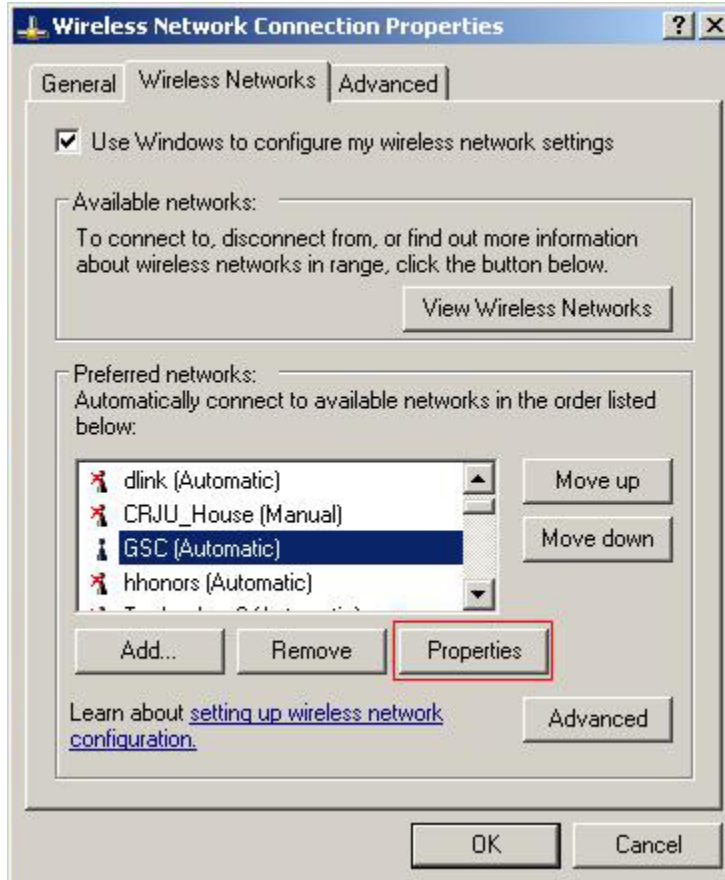
2. This will open the Wireless Network Connection Status dialog box, and on this screen, click View Wireless Networks.



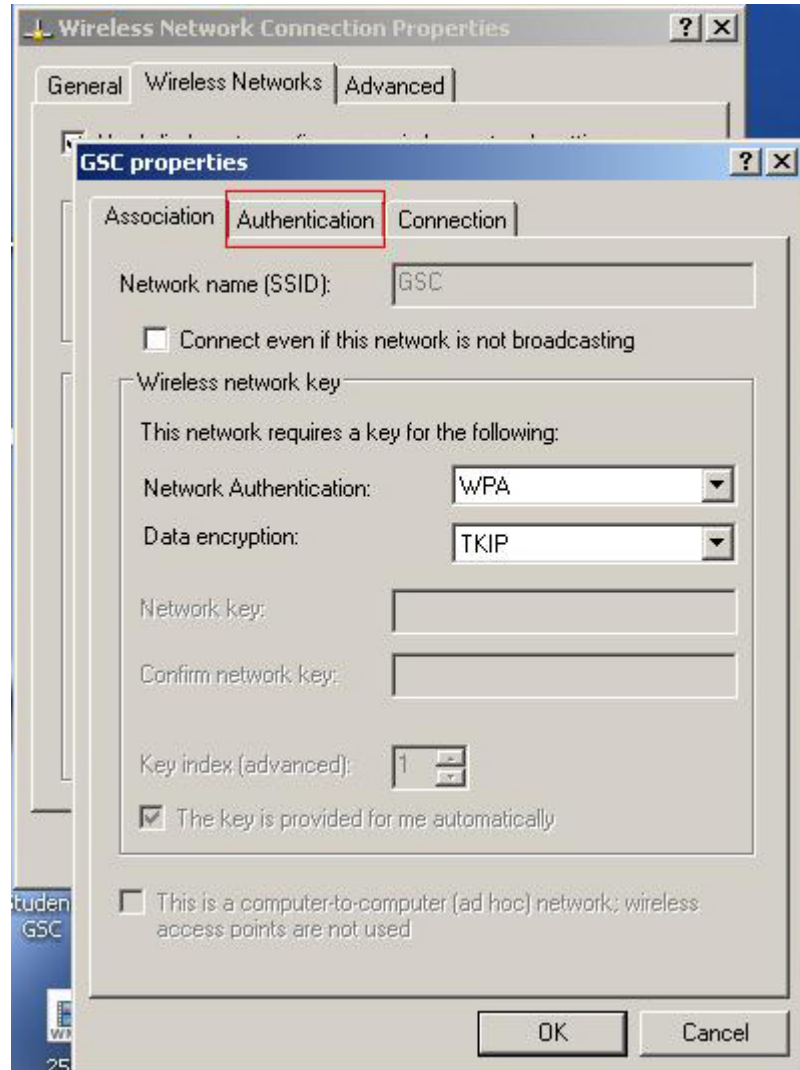
3. On the screen shown below, click Change advanced settings. This can be found on the left sidebar of the window.



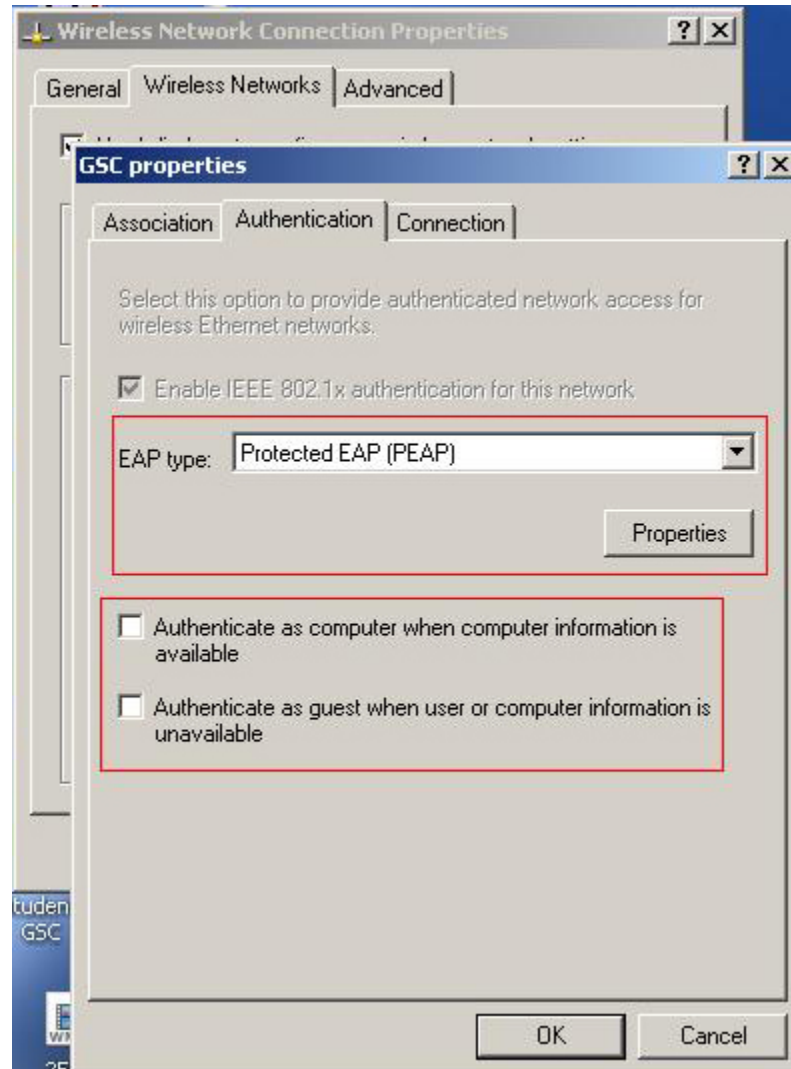
4. When the dialog box appears, click on Properties, located near the bottom.



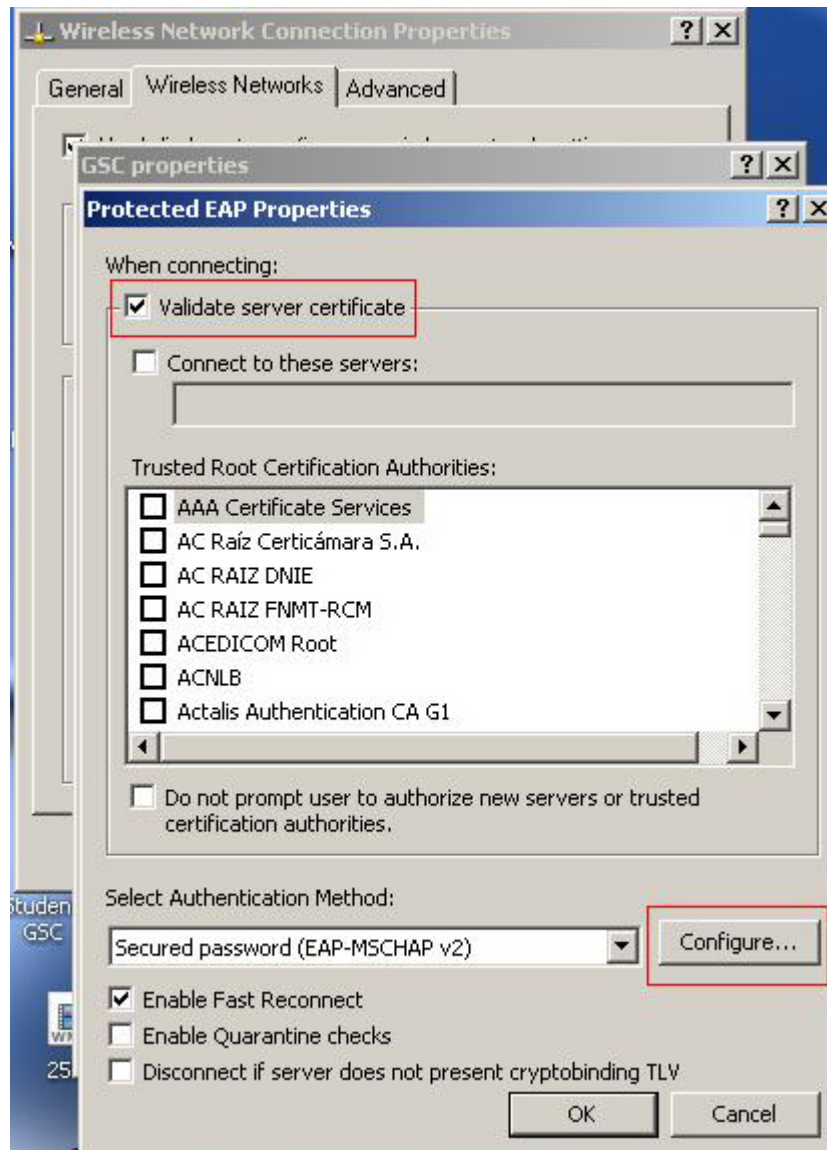
5. In this dialog box, click on the Authentication tab.



6. Make sure that the EAP type is Protected EAP (PEAP) and the two boxes are left unmarked.



7. In the Protected EAP Properties dialog box, uncheck the Validate server certificate option. After this is done, click on Configure... towards the bottom of the box.



8. When the alert message appears, uncheck the option and then click OK.



9. Another box should appear at the bottom of the right hand side of the screen when you try to connect to GSC wireless network. Click on this to enter your credentials.



10. When this screen appears, type your ID number in the username field and, in the field below, the password you use to log on college computers. The domain should be GLENVILLE.EDU. When finished, click OK.

Enter Credentials [X]

User name: 00055782

Password: ●●●●●●●●●●●●

Logon domain: GLENVILLE.EDU

Save this user name and password for future use

OK Cancel